

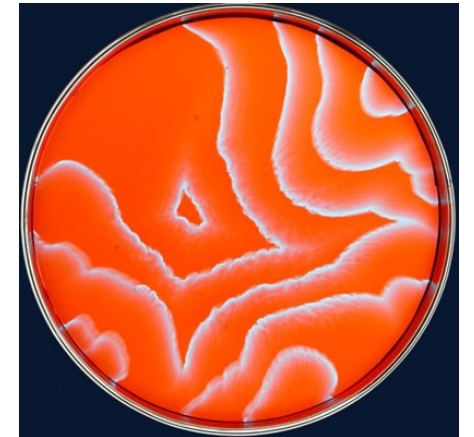
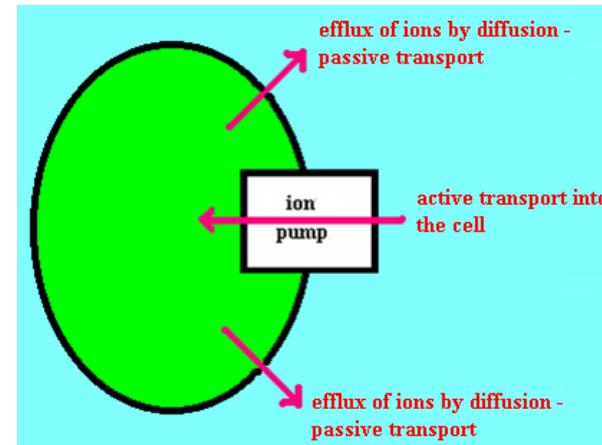
# MUNI

Ilya  
Prigogine  
1917 - 2003



## Lectures on Medical Biophysics

### Thermodynamics and life



# Lecture outline

- Basic concepts of non-equilibrium thermodynamics of living systems
- Diffusion
- Osmosis and osmotic pressure

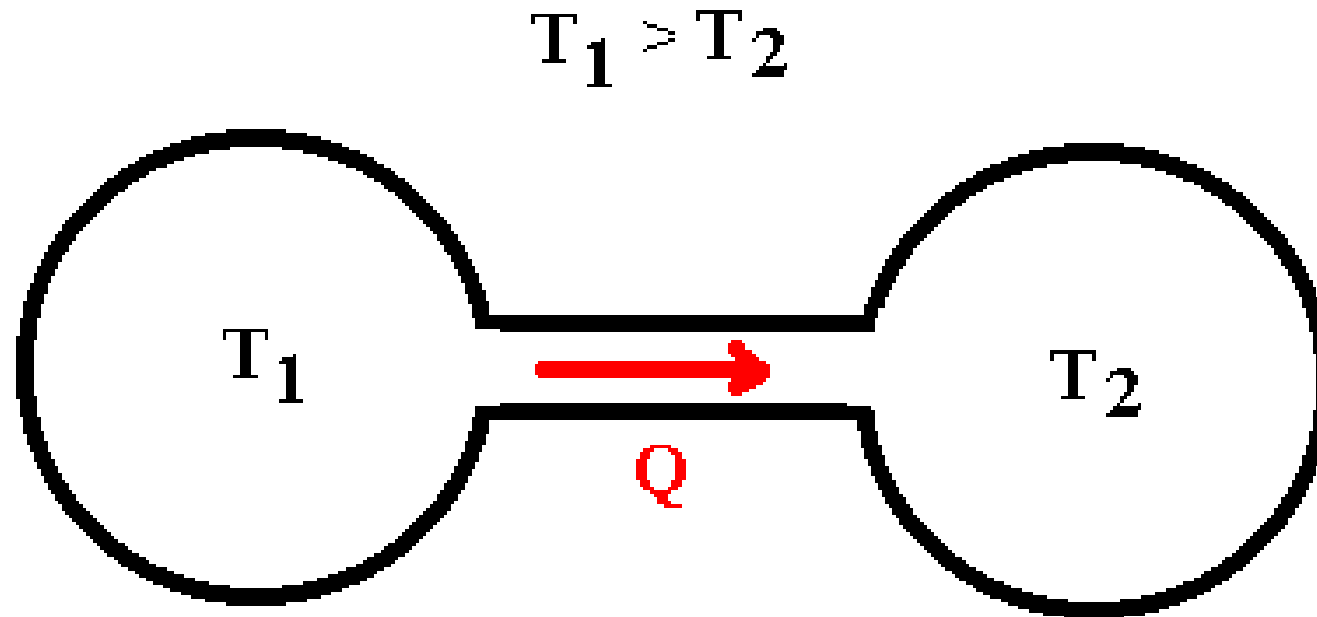
# Basic concepts of non-equilibrium thermodynamics of living systems

- There is an internal „source“ of entropy in non-equilibrium systems.
- The amount of entropy „produced“ per unit volume in unit time is called the *entropy production rate*  $\sigma$  (sigma).

# Prigogine principle

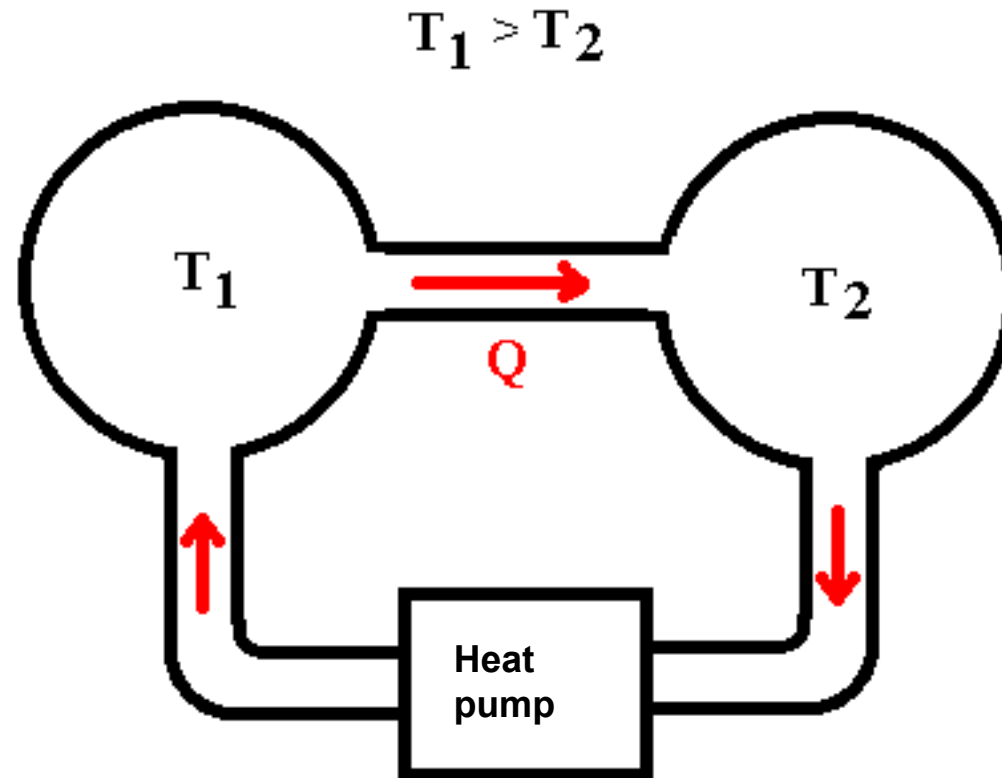
- For states not too far from thermodynamic equilibrium, the Prigogine principle applies:  
*At constant external conditions, an open system spontaneously proceeds towards a state with a minimum entropy production rate.*
- This state is called a **stationary state** (in biology: state of dynamic equilibrium, homeostasis respectively).

# Difference between an equilibrium and stationary state



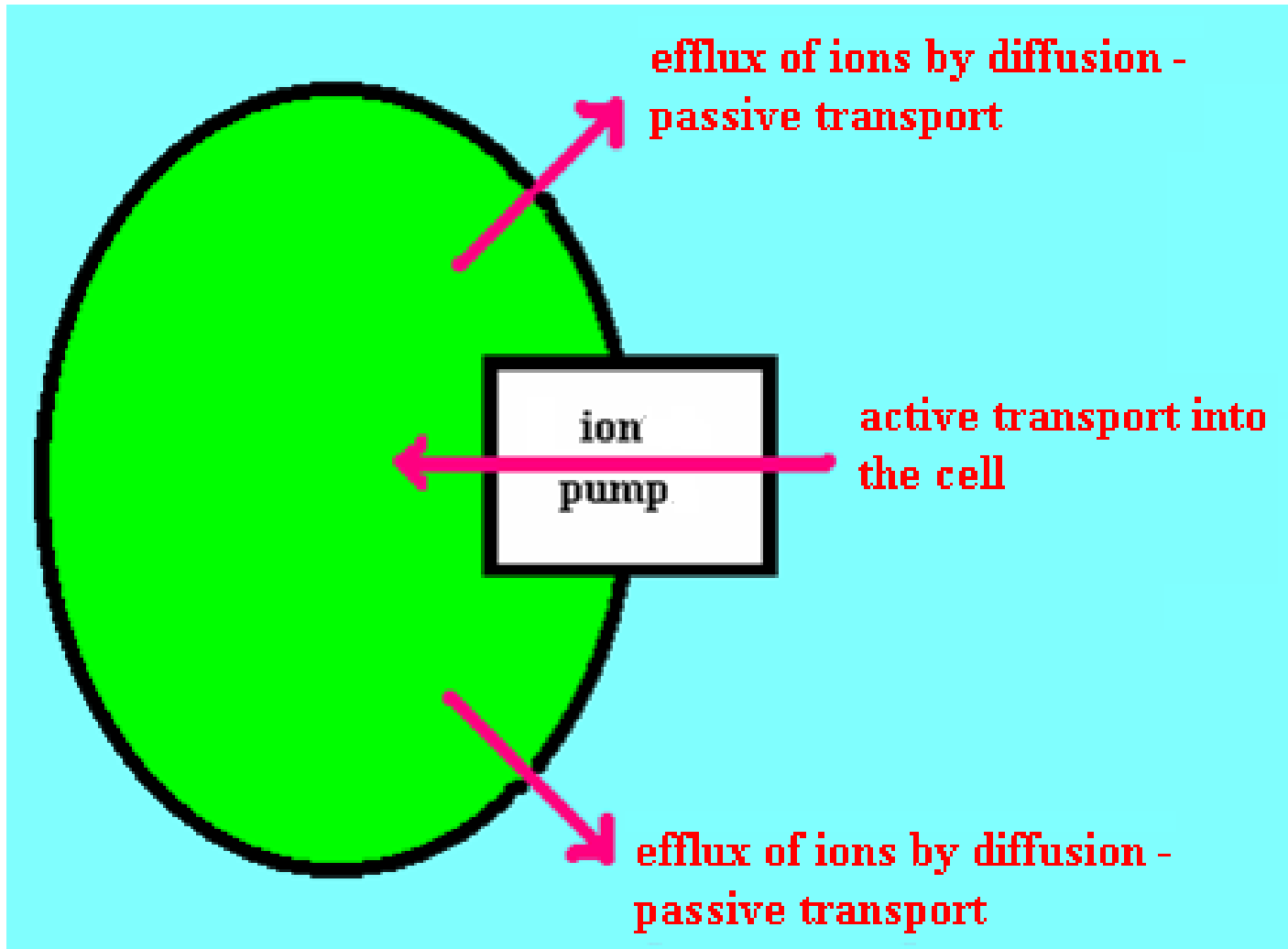
Is it possible to maintain a state with different temperatures in an isolated system?

# Difference between an equilibrium and stationary state



The temperature difference can be maintained only in an open system involving a **heat pump** which requires an energy input to function.

# Difference between an equilibrium and stationary state



The ion pump maintains a constant difference in concentration of ions and/but **requires energy**.

# Fluctuations and generalised le Chatelier principle

**Fluctuations** are small deviations from the equilibrium or stationary state arising from *internal* stochastic (random) processes. Small **disturbances** are small deviations from the equilibrium or stationary state arising from *external* processes.

- **Generalised le Chatelier principle:**
  - *When a system is at a stationary state, any small fluctuations lead to fluxes of particles or energy which cause the system to return to the original stationary state.*
- **Critical or bifurcation point** (from this point the system can develop in two different ways – e.g. return to the original stationary state or go to another one)

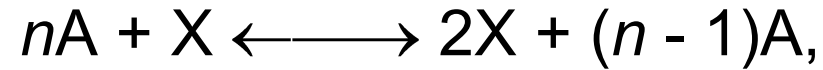


# Dissipative structures

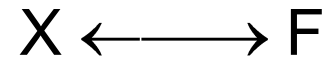
- Ordered non-equilibrium time-space structures are called dissipative structures. We cannot apply Boltzmann formula on them. According to *Prigogine*, they originate as a consequence of a fluctuation. They are stabilised by energy exchange with environment. The dissipative structures belong among problems solved by non-linear non-equilibrium thermodynamics. They can appear only in conditions far enough from equilibrium and a sufficient energy and substance flow is necessary. (Example: „Bénard instability“)

# Autocatalytic reactions

- A general equation of the autocatalytic reaction:

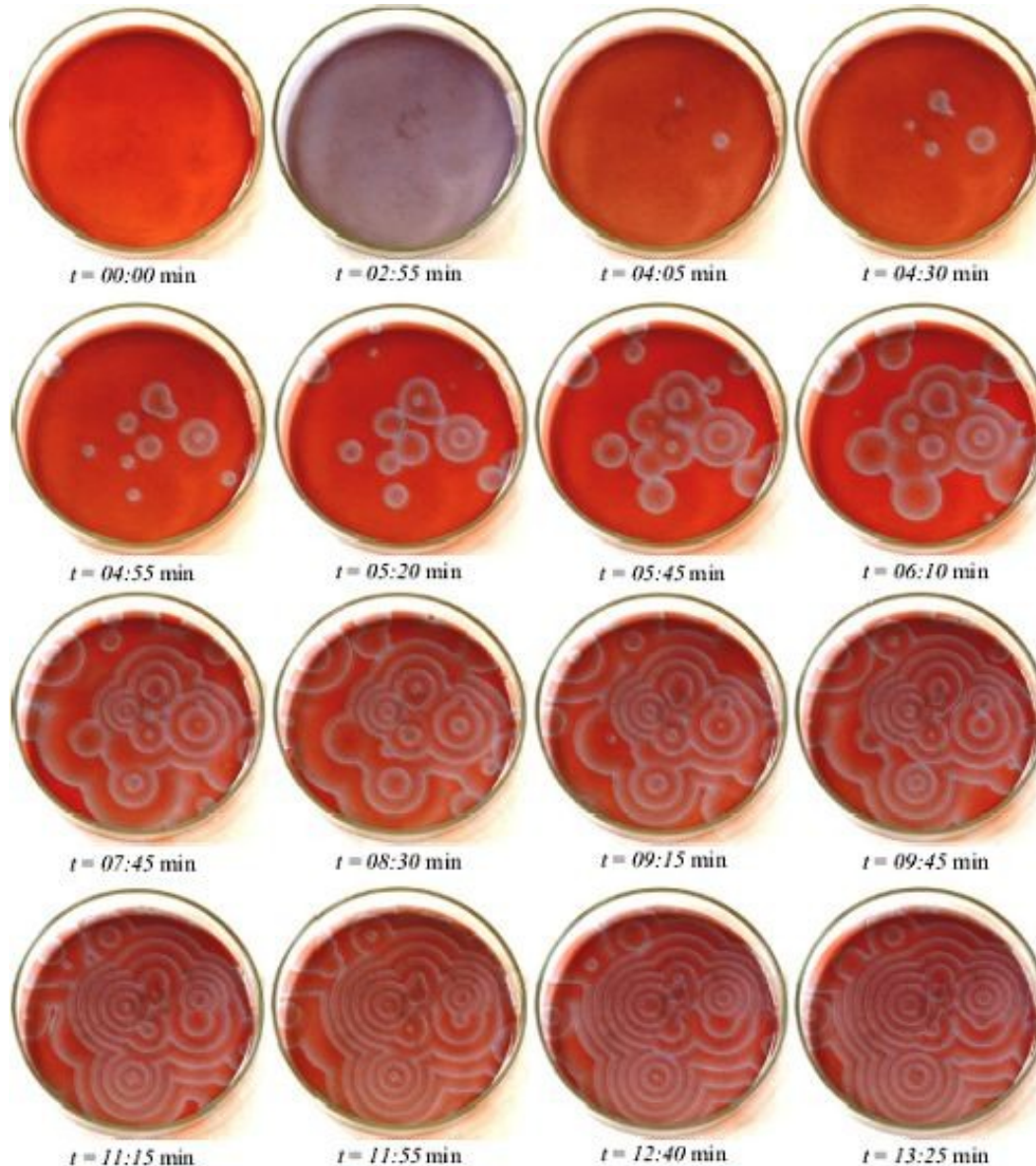


It can be followed by:



- In the autocatalytic reaction, a compound X is formed from compound A under in presence of the substance X. It means that the substance X acts as a catalyst in its formation. When the substance A is available in sufficient amount, the amount of X grows exponentially. F can be a product formed from compound X.
- Autocatalytic reaction of it's kind is also the replication of DNA. *It should be admitted that it is a complex of „common“ chemical reactions can demonstrate itself as an autocatalytic reaction, i.e. a complex of metabolic processes which results in formation of a copy carrying the same genetic information.*
- Autocatalytic reaction is a chemical dissipative structure and behaves like a chemical oscillator.

# Belousov-Zhabotinsky reaction



Slow chemical oscillations can be seen.

[http://www.jkrieger.de/bzr/2\\_4\\_versuch\\_raeuml.html#2\\_4](http://www.jkrieger.de/bzr/2_4_versuch_raeuml.html#2_4)

# Examples of thermodynamic approach to problem solution:

Non-equilibrium thermodynamics:  
**Diffusion**

Equilibrium thermodynamics:  
**Osmosis**

# Diffusion as an irreversible process

Transport process - tmd. system proceeds towards equilibrium state, in which concentrations of all present substances are equalised in whole volume.

The flow of diffusing substance is constant when there is no significant change of its concentration on both sides of the (permeable) membrane (e.g., when the process is slow, volumes are large or active transport is present).

*Density of diffusion flow  $J$*  definition – amount of substance passing through unit area of a boundary in unit time:

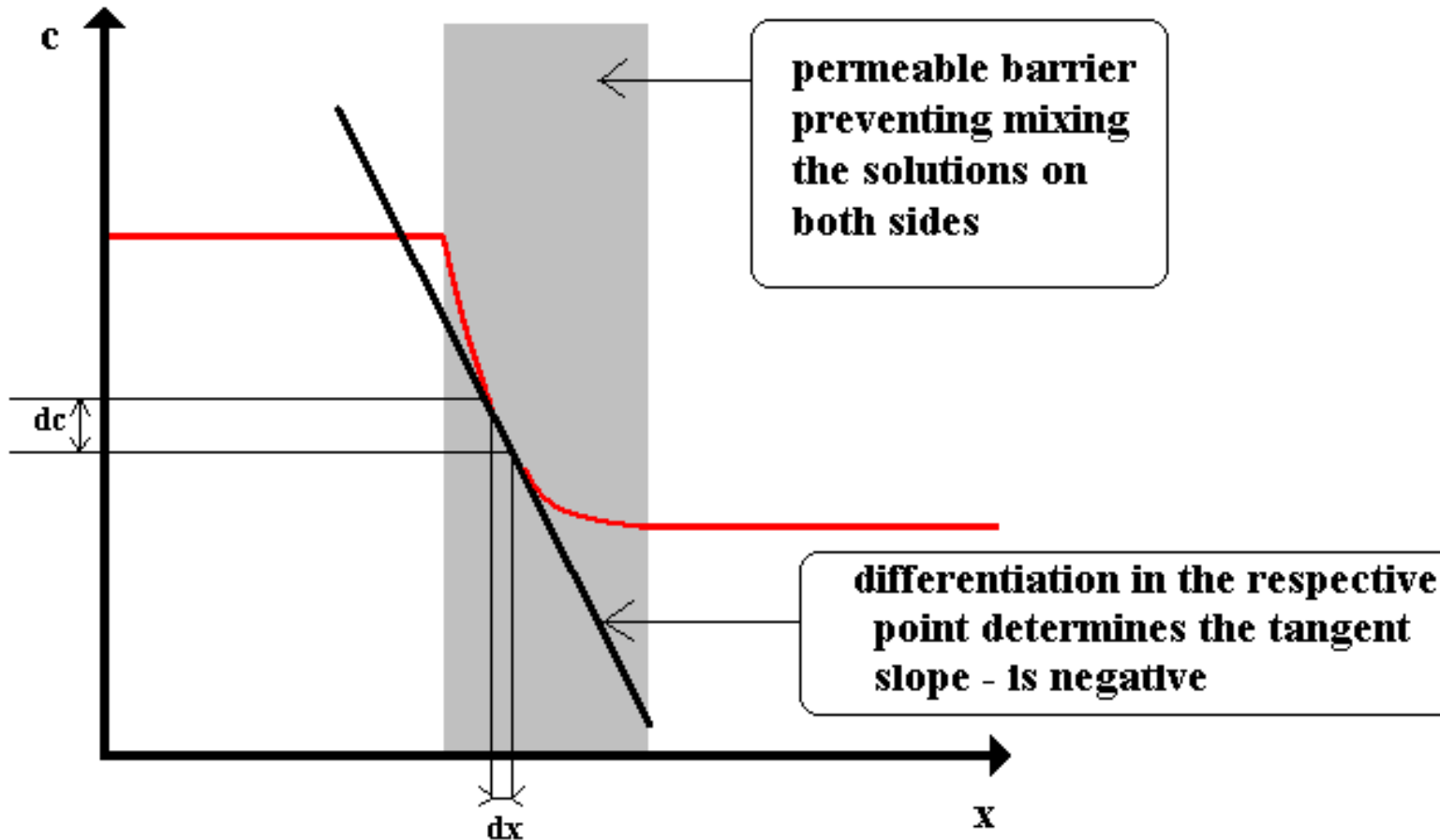
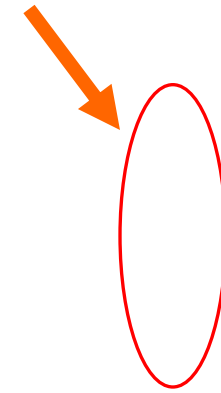
$A$  is total area of the boundary,  $dt$  is a small time interval during which substance amount  $dn$  is transported.

# 1st Fick law

*A.E. Fick* (1885):

(substance moves in the direction of the x-axis, one-dimensional case of diffusion):

Concentration gradient



**$D$  - diffusion coefficient**  
[ $\text{m}^2 \cdot \text{s}^{-1}$ ]

Typical values of  $D$ :  
from  $1 \cdot 10^{-9}$  for small molecules to  $1 \cdot 10^{-12}$  for big macromolecules

# Diffusion coefficient

Approximate formula for the diffusion coefficient was derived by *A. Einstein*:

$k$  is Boltzmann constant

$T$  is thermodynamic temperature

$\eta$  is dynamic viscosity

$r$  is particle radius.

The term  $6\pi\eta r$  is called *friction-* or *hydrodynamic coefficient*  $f$ .

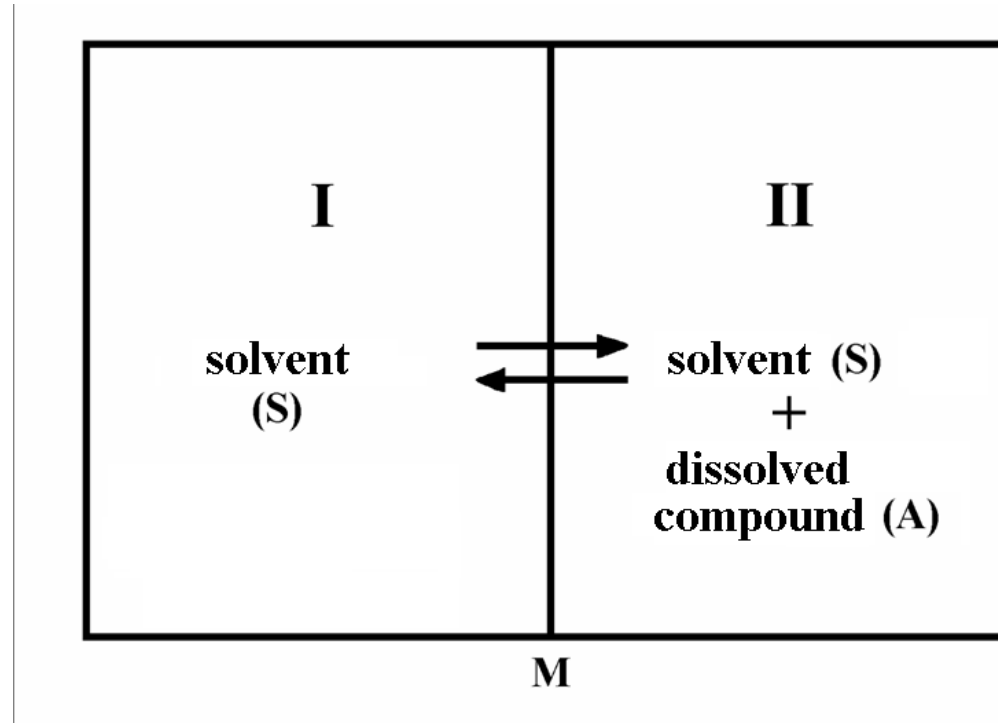
# 2<sup>nd</sup> Fick law

The 1<sup>st</sup> Fick law holds when the concentration gradient is constant over time. This condition is not fulfilled for most real processes, so that we need the 2<sup>nd</sup> Fick law to describe such diffusion:

The term  $d^2c/dx^2$  (second derivative of concentration  $c$  with respect to position  $x$ ,  $d(dc/dx)/dx$ , or an infinitesimal change of concentration gradient along  $x$ -axis. We can say: the rate of change with time of substance concentration at a given point is proportional to the spatial change of the concentration gradient. The proportionality constant  $D$  is again the diffusion coefficient.



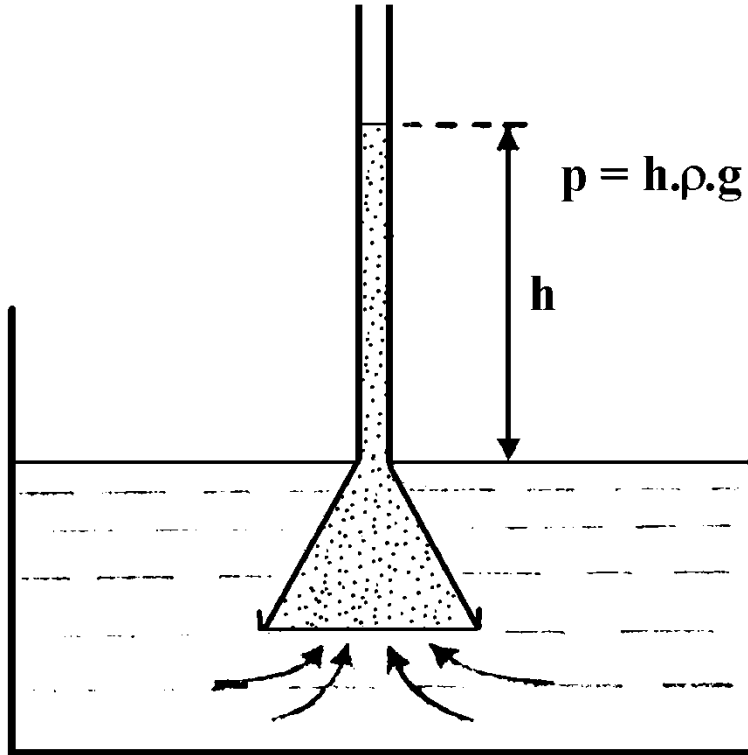
# Osmosis and osmotic pressure



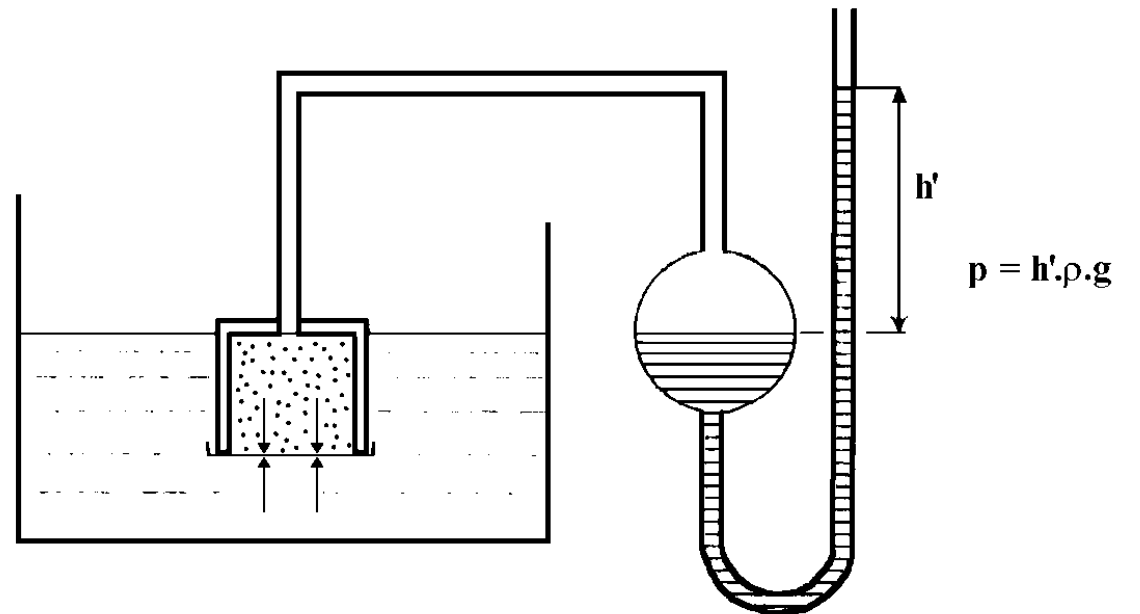
Solvent can pass through the membrane but not the solute. System proceeds to thermodynamic equilibrium by equalisation of concentrations of substances in the whole system by *solvent* diffusion from space I into the space II.

Result: pressure increase in space II when the membrane is rigid.

# Pfeffer experiment



Below is no change in concentration of solution – measurement is more accurate.



# van't Hoff formula

$$\Pi = cRT$$

$\Pi$  is osmotic pressure [Pa]

$c$  concentration of dissolved compound ( $n/V$ )

$R$  universal (molar) gas constant

$T$  thermodynamic temperature

□ Better fitting (approaching) formula:

$$\Pi = m'RT$$

$m'$  is molality (substance amount in 1 litre of solvent).

# van't Hoff formula

For electrolytes:

$$\Pi = icRT$$

$i$  is dimensionless van't Hoff *correction factor*, which says how many times more particles are present in solution than the original number of dissolved non-dissociated particles (molecules).

The product  $ic$  is sometimes called osmolar concentration or osmolarity with unit  $\text{osmol}\cdot\text{l}^{-1}$ .

A strong electrolyte with concentration of  $1 \text{ mol}\cdot\text{l}^{-1}$ , dissociating into two ions, has the osmolar concentration  $2 \text{ osmol}\cdot\text{l}^{-1}$  and double the osmotic pressure of a non-dissociating compound of the same concentration.

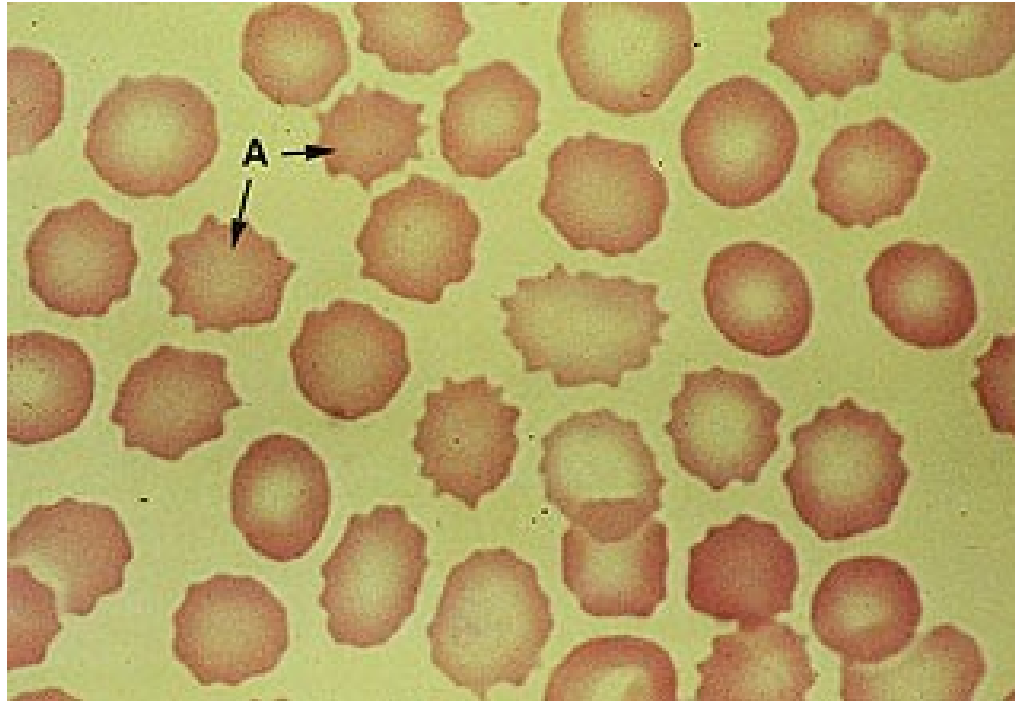
The osmotic pressure of blood plasma or interstitial fluid is about 770 kPa. (1 M solution of a non-dissociating compound has osmotic pressure 2.58 MPa at the same temperature).

Oncotic pressure (3.3 kPa)

# Tonicity of solutions

- solutions having osmotic pressure lower than blood plasma has are hypotonic, with the same pressure are isotonic, and with higher pressure than blood plasma are hypertonic.
- **endoosmosis: haemolysis**
- The range of concentrations of hypotonic solutions in which partial or full haemolysis does not occur = osmotic resistance of erythrocytes.
- **exoosmosis: plasmorrhysis** (in plants - plasmolysis)
- receptors (volumoreceptors in kidneys and osmoreceptors in hypothalamus)

# How does it look?



Echinocytes – erythrocytes exposed to a hypertonic solution.  
[http://webteach.mccs.uky.edu/COM/pat823/online\\_materials/diglectures/rbcs/imgshtml/image36.html](http://webteach.mccs.uky.edu/COM/pat823/online_materials/diglectures/rbcs/imgshtml/image36.html)



Plasmolysis of epidermal cells of onion in hypertonic medium.  
[http://www.pgjr.alpine.k12.ut.us/science/whitaker/Cell\\_Chemistry/Plasmolysis.html](http://www.pgjr.alpine.k12.ut.us/science/whitaker/Cell_Chemistry/Plasmolysis.html)

**M U N I**

**Author:**

**Vojtěch Mornstein**

**Language revision:**

**Carmel J. Caruana**

**Last revision 2021, and sound track  
addition September 2020**