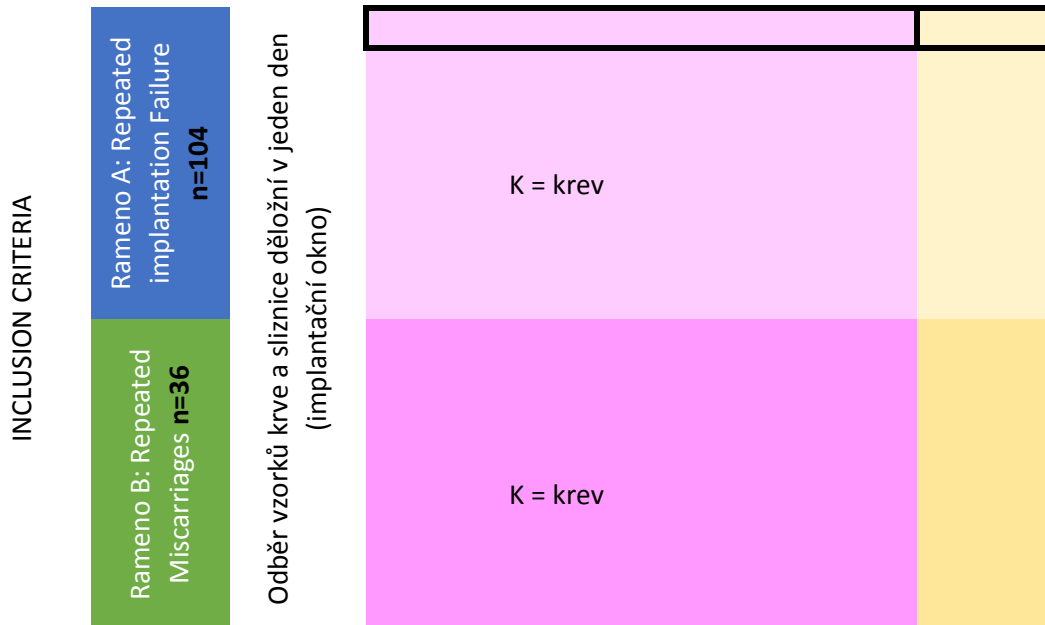


DESIGN



Otázky: je rozdíl mezi těmito dvěma skupinami v naměřených parametrech (jedno vyskytuje se v krvi parametr, přijehož elevaci (nebo snížení), lze predikovat)

Pozn: lze nějak zpracovat srovnání s normálními hodnotami uváděnými v literatuře

Pozn2: původně uvažovanou skupinu zdravých kontrol se nepodařilo rekrutovat

děkuji

P. Otevřel

	jeden řádek = jedna pacientka
B= biopsie sliznice děložní	žádná pacientka se nevyskytuje v obou skupinách
B= biopsie sliznice děložní	

tlivých, nebo kombinaci parametrů)?
 ovat posuny v parametrech z biopsie?

ře? Tedy zda v jedné ze skupin jsou posuny, změny, kombinace změn častější než u druhé?

(řádek 1)

norma			4,5-18,0%	3,5-17,5%	0,3-1,0%
komentář:			NK = CD56+CD3-	NK+=CD16- CD56dim	NK++ = CD16- CD56bright
rameno	kód pac	materiál	uNK z Ly	NK+ z Ly	NK++ z Ly
A	NK-A-V-001-EG	K	18.16	17.24	0.92
A	NK-A-V-002-AB	K	6	5.09	0.91
A	NK-A-A-001-NM	K	16.43	15.34	1.09
A	NK-A-J-001-PP	K	9.82	9.11	0.71
A	NK-A-J-002-MB	K	13.12	3.22	9.9
A	NK-A-V-003-MB	K	8.2	7.76	0.44
A	NK-A-J-003-MR	K	7.75	7.4	0.35
A	NK-A-B-002-PŠ	K	4.09	3.21	0.88
A	NK-A-O-001-IJ	K	7.05	6.17	0.88
A	NK-A-J-004-ZO	K	11.75	10.96	0.79
A	NK-A-B-003-AK	K	9.25	8.92	0.33
A	NK-A-A-002-MP	K	10.63	9.68	0.95
A	NK-A-O-003-AM	K	10.08	9.52	0.56
A	NK-A-O-002-BS	K	15.82	14.59	1.23
A	NK-A-A-003-KT	K	19.95	19.2	0.75
A	NK-A-J-005-ED	K	9.93	9.45	0.48
A	NK-A-O-004-VK	K	5.71	5.36	0.35
A	NK-A-LB-002-BD	K	8.81	8.36	0.45
A	NK-A-L-001-IP	K	7.42	6.99	0.43
A	NK-A-B-004-VŠ	K	12	11.59	0.41
A	NK-A-V-005-ŠK	K	8.91	8.53	0.38
A	NK-A-LB-001-SM	K	14.03	13.54	0.49
A	NK-A-V-004-VP	K	12.92	12.61	0.31
A	NK-A-O-006-LK	K	35.03	33.25	1.78
A	NK-A-O-007-HB	K	5.43	4.71	0.72
A	NK-A-LB-003-OR	K	4.85	4.65	0.2
A	NK-A-J-007-PH	K	18.15	17.56	0.59
A	NK-A-P-01-JF	K	8.3	7.69	0.61
A	NK-A-H-001-VJ	K	5.94	5.78	0.16
A	NK-A-O-008-VV	K	4.71	4.12	0.59
A	NK-A-H-002-SŠ	K	8.38	7.82	0.56
A	NK-A-J-008-IN	K	14.23	13.8	0.43
A	NK-A-A-004-KK	K	8.95	8.27	0.68
A	NK-A-O-011-JZ	K	3.85	3.68	0.17
A	NK-A-O-009-LG	K	12.15	11.35	0.8
A	NK-A-O-010-DŽ	K	9.99	9.6	0.39
A	NK-A-J-009-LM	K	7.8	7.39	0.41
A	NK-A-A-005-DG	K	15.98	15.01	0.97
A	NK-A-V-007-HR	K	8.65	8.33	0.32
A	NK-A-O-012-KH	K	8.65	8.32	0.33
A	NK-A-O-013-ZR	K	7.52	7.1	0.42
A	NK-A-B-005-RO	K	24.47	23.86	0.61
A	NK-A-B-006-HP	K	10.15	9.38	0.77
A	NK-A-O-015-RV	K	7.06	5.55	1.51

A	NK-A-V-009-KČ	K	7.58	6.89	0.69
A	NK-A-O-016-VA	K	12.75	11.99	0.76
A	NK-A-O-018-LL	K	2.63	2.27	0.36
A	NK-A-J-011-IV	K	12.11	11.6	0.51
A	NK-A-P-002-MŠ	K	12.44	11.83	0.61
A	NK-A-O-019-SM	K	15.31	14.65	0.66
A	NK-A-P-003-PV	K	13.91	13.26	0.65
A	NK-A-J-012-PP	K	24.37	23.79	0.58
A	NK-A-J-013-LK	K	12.86	12.34	0.52
A	NK-A-LB-004-DK	K	13.12	12.93	0.19
A	NK-A-O-004-VK 2.odb.	K	4.57	4.43	0.14
A	NK-A-J-015-MT	K	6.63	5.01	1.62
A	NK-A-B-008-PM	K	18.77	17.6	1.17
A	NK-A-O-021-LŠ	K	17.47	16	1.47
A	NK-A-LB-006-ZS	K	12.64	11.88	0.76
A	NK-A-LB-009-JB	K	20.62	19.53	1.09
A	NK-A-P-004-AČ	K	16.18	15.67	0.51
A	NK-A-J-016-RH	K	3.84	3.55	0.29
A	NK-A-O-023-DL	K	13.92	12.47	1.45
A	NK-A-O-022-KV	K	6.93	6.41	0.52
A	NK-A-LB-009-KZ	K	10.69	10.29	0.4
A	NK-A-P-005-LC	K	6.68	6.02	0.66
A	NK-A-O-024-DB	K	3.84	2.97	0.87
A	NK-A-O-025-EZ	K	13.15	12.3	0.85
A	NK-A-O-026-ZV	K	18.12	17.58	0.54
A	NK-A-O-028-EN	K	10.13	9.67	0.46
A	NK-A-O-029-LD	K	8.38	7.6	0.78
A	NK-A-O-030-VL	K	9.1	8.8	0.3
A	NK-A-O-031-MP	K	12.2	11.58	0.62
A	NK-A-B-011-LB	K	16.38	13.86	2.52
A	NK-A-P-006-PM	K	13.79	12.98	0.81
A	NK-A-B-012-LP	K	21.91	18.24	3.67
A	NK-A-O-033-LŘ	K	11.56	11.34	0.22
A	NK-A-B-013-ZJ	K	7.05	6.62	0.43
A	NK-A-B-014-MH	K	5.61	4.92	0.69
A	NK-A-O-036-DK	K	3.79	3.39	0.4
A	NK-A-o-037-AM	K	16.76	15.84	0.92
A	NK-A-B-017-LT	K	11.99	11.42	0.57
A	NK-A-B-016-ZJ	K	12.89	12.62	0.27
A	NK-A-B-020-AN	K	13.338	11.718	1.62
A	NK-A-B-018-DZ	K	6.24	5.29	0.95
A	NK-A-O-040-MH	K	14.06	12.42	1.64
A	NK-A-B-023-HR	K	6.23	5.96	0.27
A	NK-A-B-025-KH	K	7.08	6.47	0.61
A	NK-A-B-026-DD	K	15.98	15.2	0.78
A	NK-A-O-042-MZ	K	17.02	16.73	0.29
A	NK-A-B-027-ŠK	K	11.3	10.87	0.43
A	NK-A-B-028-RB	K	8.99	7.79	1.2
A	NK-A-B-030-PM	K	13.68	3	10.68
A	NK-A-B-031-TW	K	13.46	12.05	1.41

A NK-A-O-045-VŠ
A NK-A-B-034-HN
A NK-A-B-033-KH
A NK-A-B-035-JV
A NK-A-B-036-NH
A NK-A-B-038-MJ
A NK-A-B-040-NB
A NK-A-B-041-JK
A NK-A-V-008-JŠ
A NK-A-o-037-AM

K	5.64	4.44	1.2
K	5.07	4.71	0.36
K	21.39	20.73	0.66
K	12.54	10.92	1.62
K	4.26	3.47	0.79
K	19.49	18.32	1.17
K	7.78	7.1	0.68
K	8.38	7.93	0.45
K	16.76	15.84	0.92

unknown	60,0-80,%		83,0-96,0%	0,0-7,0%
NK+++ = CD16- CD56superbright	T= T lymfocyty CD3+CD56-	NKT = CD 56+CD3+	NKc = cytotox = CD56+CD16+	NKr = regulační =CD56+CD16-
NK+++ z Ly	T z Ly	NKT z Ly	NKc z NK	NKr z NK
	56.06	11.36	88.34	4.3
	75.63	1.62	80.73	3.94
	58.68	4.26	76.7	2.77
	71.62	5.34	88.18	4.24
	70.42	6.55	89.49	5.28
	69.12	16	90.25	3.79
	74.71	8.23	87.45	6.32
	79.63	3.94	76.63	17.07
	67.34	11.84	86.63	6.81
	66.19	10.21	84.81	8.52
	71.71	3.77	90.85	2.8
	73.83	2.47	86.21	5.78
	75.81	4.05	91.29	2.95
	56.64	20.69	88.88	5.76
	61.88	15.63	90.93	3.54
	75.75	5	89.97	5.23
	74.66	5.27	80.54	5.67
	58.08	12.85	85.87	6.2
	69.22	13.46	83.14	7.33
	74.56	2.35	88.28	3.56
	70.99	4.99	89.34	4.69
	62.91	10.18	87.57	3.14
	70.88	8.24	86.49	3.29
	33.8	21.23	88.75	3.21
	80.59	5.46	83.4	4.98
	71.75	6.17	90.03	5.85
	68.15	3.46	95.35	2.8
	78.4	2.52	93.64	2.19
	79.79	2.86	80.14	3.43
	74.38	1.86	69.52	9.2
	68.15	3.89	91.96	4.26
	65.49	8.51	86.25	3.75
	73.39	2.84	84.96	5.87
	80.62	3.09	71.36	2.15
	70.45	4.23	82.62	5.99
	75.5	4.71	85.29	4.21
	81.41	3.19	93.34	4.52
	62.85	6.07	85.85	4.45
	74.48	2.82	90.96	3.89
	75.5	2.56	86.89	3.21
	72.55	1.17	82.73	5.34
	63.55	2.78	91.98	3.03
	72.2	2.06	86.18	4.84
	78.43	2.7	84.33	8.86

	72.32	5.89	78.03	5.08
	73.55	7.67	89.33	3.53
	77.9	3.24	83.41	6.71
	70.92	5.1	90.29	4.78
	62.88	5.89	80.91	6.62
	66.62	2.76	90.58	2.49
	71.37	1.78	90.15	3.56
	55.48	4.32	87.77	2.18
	74.5	4.78	89.41	3.71
	71.93	2.63	89.12	1.7
	73.51	3.84	85.79	3.88
	74.43	1.59	78.03	16.21
	66.07	5.64	92.18	3.21
	6.65	3.29	87.81	4.78
	65.42	10.55	92.68	2.68
	65.58	2.15	89.14	4.22
	64.89	4.29	91.95	3.31
	82.33	5.43	79.38	6.52
	69.91	3.18	88.34	3.57
	74.77	8.08	87.51	3.87
	71.04	3.2	88.72	2.04
	75.94	6.18	75.32	6.44
	70.3	13.14	78.37	7.06
	73.33	4.71	85.52	4.79
	70.36	2.3	88.84	3.51
	72.45	4.89	81.75	4.2
	71.81	2.48	80.95	7.93
	59.01	9.22	84.66	8.24
	71.46	2.98	93.08	4.93
	60.6	8.57	80.15	12.71
	64.68	8.08	88.13	7.02
	53.86	1.94	81.11	13.77
	49.29	26.81	87.1	2.19
	77.48	0.94	53.14	6.97
	77.94	5.45	68.64	10.84
	83.53	3.94	79.37	7.62
	72.5	2.22	89.75	6.53
	74	3.58	82.22	4.81
	65.83	1.52	90.05	4.72
	58.07	15.99	82.3	5.76
	82.37	5.18	80.08	10.56
	68.94	6.89	84.57	10.03
	82.31	0.94	89.33	5.01
	70.55	0.63	81.38	5.08
	68.48	4.66	87.76	6.89
	68.2	2.73	95.08	3.92
	75.28	4.24	86.45	5.41
	73.54	5.57	77.18	11.05
	42.28	39.57	80.03	18.28
	70.02	4.69	84.46	3.74

	78.15	0.41	75.78	13.51
	69.13	15.08	83.83	9.75
	57.65	4.32	85.31	4.14
	70.03	4.1	81.88	10.54
	73.16	10.79	71.21	14.68
	57.17	12.56	87.07	7.14
	67.02	10.28	79.2	6.47
	62.42	14.63	73.44	3.93
	72.5	2.22	89.75	6.53

0,0-6,0%	2,5-13,5%			
NK++ = CD16- CD56bright	populace nej. Významu			
NK++ z NK	CD56 - 16+ z NK	Nkr/Nkc	kód pac.	materiál
3.39	7.21	0.049	NK-A-V-001-EG	B
4.53	15.33	0.049	NK-A-V-002-AB	B
2.42	21.06	0.036	NK-A-A-001-NM	B
3.59	7.58	0.048	NK-A-J-001-PP	B
4.91	5.23	0.059	NK-A-J-002-MB	B
3.25	5.96	0.042	NK-A-V-003-MB	B
4.68	6.23	0.072	NK-A-J-003-MR	B
15.94	6.3	0.223	NK-A-B-002-PŠ	B
5.82	5.86	0.079	NK-A-O-001-IJ	B
7.17	6.67	0.100	NK-A-J-004-ZO	B
2.2	6.34	0.031	NK-A-B-003-AK	B
5.12	8.01	0.067	NK-A-A-002-MP	B
2.62	5.76	0.032	NK-A-O-003-AM	B
5.71	5.37	0.065	NK-A-O-002-BS	B
3.2	5.48	0.039	NK-A-A-003-KT	B
3.72	4.79	0.058	NK-A-J-005-ED	B
4.6	13.71	0.070	NK-A-O-004-VK	B
5.48	7.92	0.072	NK-A-LB-002-BD	B
5.17	9.53	0.088	NK-A-L-001-IP	B
2.8	8.16	0.040	NK-A-B-004-VŠ	B
3.42	5.96	0.052	NK-A-V-005-ŠK	B
2.35	9.29	0.036	NK-A-LB-001-SM	B
2.55	10.21	0.038	NK-A-V-004-VP	B
2.6	8.04	0.036	NK-A-O-006-LK	B
4.5	11.63	0.060	NK-A-O-007-HB	B
3.42	4.12	0.065	NK-A-LB-003-OR	B
1.75	1.85	0.029	NK-A-J-007-PH	B
2.09	4.28	0.023	NK-A-P-01-JF	B
2.37	16.43	0.043	NK-A-H-001-VJ	B
6.3	21.29	0.132	NK-A-O-008-VV	B
3.53	3.77	0.046	NK-A-H-002-SŠ	B
2.79	10	0.043	NK-A-J-008-IN	B
4.12	9.18	0.069	NK-A-A-004-KK	B
0.9	26.48	0.030	NK-A-O-011-JZ	B
4.89	11.39	0.073	NK-A-O-009-LG	B
3.38	10.5	0.049	NK-A-O-010-DŽ	B
2.78	2.14	0.048	NK-A-J-009-LM	B
3.25	9.69	0.052	Nk-A-A-005-DG	B nekr
2.37	5.15	0.043	NK-A-V-007-HR	B
1.94	9.9	0.037	NK-A-O-012-KH	B
3.24	11.93	0.065	NK-A-O-013-ZR	B
2.21	5	0.033	NK-A-B-005-RO	B
3.28	8.98	0.056	NK-A-B-006-HP	B
7.46	6.8	0.105	NK-A-O-015-RV	B

4.08	16.89	0.065	NK-A-V-009-KČ	B
2.7	7.14	0.040	NK-A-O-016-VA	B
3.53	9.88	0.080	NK-A-O-018-LL	B
3.43	4.93	0.053	NK-A-J-011-IV	B
3.38	12.05	0.082	NK-A-P-002-MŠ	B
1.39	6.93	0.027	NK-A-O-019-SM	B
3.03	6.3	0.039	NK-A-P-003-PV	B
1.64	10.05	0.025	NK-A-J-012-PP	B
3	6.85	0.041	NK-A-J-013-LK	B
0.66	9.16	0.019	NK-A-LB-004-DK	B
2.06	10.32	0.045	NK-A-O-004-VK 2.odb.	B
14.03	5.77	0.208	NK-A-J-015-MT	B
2.16	4.6	0.035	NK-A-B-008-PM	B
4.02	7.41	0.054	NK-A-O-021-LŠ	B
1.71	4.64	0.029	NK-A-LB-006-ZS	B
3.44	6.64	0.047	NK-A-LB-009-JB	B
2.32	4.74	0.036	NK-A-P-004-AČ	B
4.41	14.1	0.082	NK-A-J-016-RH	B
2.54	8.09	0.040	NK-A-O-023-DL	B
2.81	8.62	0.044	NK-A-O-022-KV	B
1.49	9.24	0.023	NK-A-LB-009-KZ	B
4.6	20.03	0.086	NK-A-P-005-LC	B
4.01	14.57	0.090	NK-A-O-024-DB	B
3.28	9.69	0.056	NK-A-O-025-EZ	B
2.34	7.64	0.040	NK-A-O-026-ZV	B
2.75	14.06	0.051	NK-A-O-028-EN	B
5.22	11.13	0.098	NK-A-O-029-LD	B
2.83	6.5	0.097	NK-A-O-030-VL	B
4.48	1.92	0.053	NK-A-O-031-MP	B
8.3	7.07	0.159	NK-A-B-011-LB	B
5.29	4.86	0.080	NK-A-P-006-PM	B
10.33	5.12	0.170	NK-A-B-012-LP	B
0.73	10.71	0.025	NK-A-O-033-LŘ	B
3.63	9.89	0.131	NK-A-B-013-ZJ	B
5.88	20.52	0.158	NK-A-B-014-MH	B
5.66	13.01	0.096	NK-A-O-036-DK	B
4.34	3.53	0.073	NK-A-o-037-AM	B
2.74	13.07	4.770	NK-A-B-017-LT	B
1.3	5.23	4.023	NK-A-B-016-ZJ	B
4.49	11.94	0.070	NK-A-B-020-AN	B
8.15	9.36	0.132	NK-A-B-018-DZ	B
6.16	5.4	0.119	NK-A-O-040-MH	B
3.18	5.66	0.056	NK-A-B-023-HR	B
3.49	13.54	0.062	NK-A-B-025-KH	B
5.53	5.34	0.079	NK-A-B-026-DD	B
1.82	1	0.041	NK-A-O-042-MZ	B
3.05	7.91	0.063	NK-A-B-027-ŠK	B
8.94	11.68	0.143	NK-A-B-028-RB	B
4.43	1.69	0.228	NK-A-B-030-PM	B
1.55	11.26	0.044	NK-A-B-031-TW	B

10.84	10.7	0.178	NK-A-O-045-VŠ	B
5.6	6.42	0.116	NK-A-B-034-HN	B
3.03	10.55	0.049	NK-A-B-033-KH	B
7.04	7.54	0.129	NK-A-B-035-JV	B
7.54	13.87	0.206	NK-A-B-036-NH	B
3.23	5.61	0.082	NK-A-B-038-MJ	B
4.24	14.33	0.082	NK-A-B-040-NB	B
3.05	12.63	0.054	NK-A-B-041-JK	B
			NK-A-V-008-JŠ	B
4.34	3.53	0.073	NK-A-o-037-AM	

21,0 - 60,0 %	3,0-5,0%	18,0-55,0%	unknown	33,0-73,0%
NK = CD56+CD3-	NK+=CD16- CD56dim	NK++ = CD16- CD56bright	NK+++ = CD16- CD56superbright	T= T lymphocyty CD3+CD56-
uNK z Ly	NK+ z Ly	NK++ z Ly	NK+++ z Ly	T z Ly
19.5	2.69	16.81	7.61	74.57
63.1	3.73	59.37	39.75	28.67
17.6	1.71	15.89	9.64	76.24
39.16	1.95	37.21	19.06	50.99
39	3.47	35.53	21.07	50.84
18.03	4.35	13.68	9.93	70.82
39.51	3.85	35.66	20.84	49.89
16.43	1.57	14.86	4.53	77.62
30.55	2.15	28.4	13	61.11
42.25	8.37	33.88	8.31	47.5
10.6	3.13	7.47	1.43	78.46
21.01	2.43	18.58	7.47	69.2
16.54	8.22	8.32	3.84	67.88
24.64	6.16	18.48	9.69	56.55
37.14	4.05	33.09	18.84	47.95
23.52	3.62	19.9	10.51	70.49
10.43	1.29	9.14	2.03	62.76
28.82	1.63	27.19	13.79	59.21
24.9	3.08	21.82	11.87	59.95
38.82	8.24	30.58	13.8	55.11
37.57	2.89	34.68	10.24	55.9
23.04	4.82	18.22	8.14	68.54
42.39	6.29	36.1	12.66	50.85
28.76	8.1	20.66	5.46	62.63
16.79	1.12	15.67	11.57	77.55
17.38	2.1	15.28	5.15	70.54
44.1	4.86	39.24	20.5	49.05
18	7.64	10.36	3.65	73.88
40.11	6.96	33.15	11.47	54.3
28.56	8.2	20.36	3.32	64.54
29.35	3.07	26.28	6.49	59.74
14.32	8.61	5.71	1.62	71.03
24.45	3.34	21.11	7.06	65.54
17.6	6.68	10.92	3.05	74.73
26.11	11	15.11	5.09	64.09
19.97	15.35	4.62	0.66	61.55
18.67	0.91	17.76	12.11	71.93
36.9	3.97	32.93	16.23	54.34
34.09	2.6	31.49	16	56.67
35.67	4.18	31.49	9	60.08
23.72	5.64	18.08	4.98	68.29
30.73	10.59	20.14	10.16	62.15
22.34	4.98	17.36	9	70.77
27.98	1.99	25.99	19.5	62.37

21.02	4.97	16.05	5.34	71.81
39.88	5.52	34.36	7.11	51.18
26.06	5.03	21.03	11.66	66.03
14.02	1.5	12.52	4.4	80.08
22.55	2.53	20.02	9.21	68.78
55.08	11.03	44.05	5.43	33.2
40.02	2.24	37.78	23.73	51.41
57.33	5.6	51.73	34.8	35
56.48	2.17	54.31	41.91	36.7
47.15	2.64	44.51	25.98	48.27
32.85	4.85	28	15.35	59.37
13.07	3.8	9.27	3.75	69.12
9.26	2.8	6.46	0.85	73.04
23.9	1.35	22.55	1.05	59.89
41.08	3.94	37.14	14.57	53.14
50.15	2.36	47.79	11.34	42.33
21.65	15.64	6.01	2.33	69.31
35.1	2.06	33.04	8.35	56.16
18.2	3.03	15.17	3.15	73.71
27.47	2.49	24.98	8.67	63.66
24.46	1.54	22.92	5.35	62.3
62.04	1.07	60.97	54.79	32.62
28.43	14.24	14.19	7.75	61.74
17.3	1.09	16.21	6.71	72.66
33.24	4.1	29.14	15.4	59.38
17	4.98	12.02	3.02	71.28
33.8	4.27	29.53	18.01	52.31
39.64	4.89	34.75	9.35	54.96
18.56	1.51	17.05	11.1	73.65
77.04	2.16	74.88	70.91	14.66
52.01	3.9	48.11	16.31	30.37
47.72	7.51	40.21	22.52	34.58
56.64	4.69	51.95	12.81	26.77
50.66	2.08	48.58	21.8	41.69
14.56	2.11	12.45	4.4	51.62
27.4	3.64	23.76	11.8	56.08
15.87	3.95	11.92	3.2	76.58
69.49	3.29	66.2	48.53	25.24
38.13	10.37	27.76	13.13	52.07
18.2	2.28	15.92	7.45	53.35
33.42	2.91	30.51	19.82	57.94
67.75	3.78	63.97	41.15	28.3
82.45	1.95	80.5	59.19	14.98
79.01	3.22	75.79	30.43	12.96
28.42	8.44	19.98	11.32	64.11
46.42	4.86	41.56	26.98	40.76
68.76	1.49	67.27	46.68	24.83
51.57	8.26	43.31	19.25	40.01
33.01	6.09	26.92	15.42	57.19
14.08	1.67	12.41	3.12	78.77

17.74	2.72	15.02	7.04	74.87
37.6	3.76	33.84	17.63	56.49
17.97	2.77	15.2	6.44	73.64
36.83	6.99	29.84	18.28	54.67
36.64	7.87	28.77	12.08	44.73
14.46	1.08	13.38	9.26	67.03
44.46	1.69	42.77	26.7	44.87
57.44	3.57	53.87	25.81	30.64
38.96	10.77	28.19	3.23	45.42

0 -8,0 %	7,5-25,0%	73,0-91,0	70,0-90,0 %	
NKT = CD56+CD3+	NKc = cytotox = CD56+CD16+	NKr = regulační =CD56+CD16-	NK++ = CD16-CD56bright	populace nej. Významu
NKT z Ly	NKc z NK	NKr z NK	NK++ z NK	CD56 - 16+ z NK
3.39	18.24	79.44	75.05	2.03
4.29	10.57	88.28	86.26	1.16
4.33	13.54	85.2	81.98	0.98
5.91	8.85	90	87.5	1.09
7.67	11.01	87.67	85.85	1.19
9.02	27.71	71.69	71.08	0.6
6.11	8.93	89.96	87.25	1.05
2.32	14.23	84.11	81.45	1.5
5.59	24.5	74.53	73	0.9
5.79	20.58	78.81	72.96	0.49
6.87	33.05	64.62	60.81	2.22
6.4	16.72	81.44	78.64	1.53
11.53	36.24	58.15	50.84	4.21
14.8	27.07	71.18	69.08	1.75
9.21	16.55	82.72	80.44	0.66
3.97	19.58	79.28	76.06	0.97
26.03	55.69	42.75	40.29	1.36
10.97	9.25	90.32	88.4	0.42
8.75	19.65	80.65	80.35	0
3.81	28.77	70.12	66.86	1.1
4.85	13.74	85.52	83.93	0.68
6	22.69	74.87	71.71	2.28
5.65	20.9	78.48	76.46	0.62
7.33	32.07	66.62	63.94	1.24
2.73	9.28	89.14	87.42	1.58
7.18	17.97	80	75.08	1.58
4.46	16.89	81.99	79.61	1.04
4.34	52.14	44.71	43.14	3.14
4.23	9.45	89.49	81.22	1.06
2.93	39.11	59.55	56.16	1.27
8.74	14.42	84.87	82.43	0.6
11.05	59.58	35.55	33.47	4.67
4.4	24.8	73.47	70.49	1.73
6.1	43.33	54.1	52.93	2.58
4	42.07	53.4	49.54	4.37
14.85	78.57	15.87	15.08	5.56
8.6	36.53	62.7	60.91	0.57
5.38	9.4	89.15	86.8	1.45
7.39	19.25	79.33	77.15	1.42
3.09	5.99	93.53	82.09	0.4
5.54	4.63	94.12	76.76	0.57
3.3	46.85	50.2	49.13	2.84
2.47	25.94	71.04	69.41	3.01
8.02	7.54	91.04	90.48	1.27

4.12	14.69	80.85	77.67	4.23
5.99	22	74.5	72.76	3.54
4.16	18.6	77.7	76.12	3.59
2.55	22.63	74.02	72.85	2.96
4.26	16.37	81.71	80.37	1.74
2.74	18.83	78.77	77	2.39
3.46	8.23	88.6	87.36	2.74
2.32	10.42	87.1	86	2.47
3.8	6.16	92.71	91.86	1.1
1.88	8.42	90.81	90.17	0.77
6.14	26.56	72	70.12	1.18
8.74	32.48	59.36	57.18	8.11
7.54	37.04	54.5	49.21	8.47
4.51	24.97	74.58	73	0.39
3.26	15.43	83.51	81.58	1.06
4	14.2	85.44	85.07	0.36
4.44	67.81	25.48	23.34	6.71
8.17	17.69	81.98	81	0.33
4.14	26.19	69.07	66.11	4.47
4.07	15.2	82.15	81.77	2.22
10.5	8.07	91.66	88.33	0.11
2.51	27	71.14	70.77	1.85
6.42	18.95	75.61	77.61	3.22
3.66	10.23	84.5	80.85	5.27
3.29	15.83	81.32	79.41	2.85
5.19	33.28	59.8	57.18	6.91
2.82	17.28	77.97	73.11	4.75
2.47	12.14	86.83	82.67	1.02
5.81	10.18	88.54	87.45	1.28
2.71	2.89	96.82	96.04	0.3
5.91	18.63	81.26	79.46	0.11
5.9	17.32	81.01	72.07	1.68
1.78	8.89	88.95	86.82	2.17
4.84	9.28	90.1	86.78	0.63
28.92	41.48	57.6	53.13	0.85
3.93	19.62	78.66	74.18	1.72
2.74	21.83	75.25	66.78	2.87
1.19	5.7	93.8	92.67	0.5
1.61	31.75	66.77	63.8	1.48
27.44	41.89	57.4	55.26	0.71
4.64	9.58	89.31	86.47	1.11
2.78	6.34	93.11	92.38	0.55
1.88	90.11	89.74	9.71	0.18
1.84	11.64	88.36	87.4	0
2.35	24.76	69.93	63.31	5.31
3.28	10.95	85.95	83.89	3.11
4.38	0.07	99.73	96.7	0.13
4.99	9.61	89.93	87.25	0.46
3.63	23.93	74.42	72.31	1.65
5.88	38.55	60.22	59.14	1.24

4.73	20.32	79.08	77.48	0.61
3.04	11.93	87.09	85.34	0.99
6.45	15.65	83.49	79.85	0.86
5.3	24.29	72.96	71.66	2.75
11.4	14.33	84.65	80.78	1.01
3.61	9.84	89.14	86.54	1.02
7.76	7.39	91.92	91.49	0.69
7.58	9.07	89.91	86.51	0.74
9.43	28.57	68.72	64.29	2.71

3,0-11,5
Nkr/Nkc
4.355
8.352
6.292
10.169
7.963
2.587
10.074
5.911
3.042
3.829
1.955
4.871
1.605
2.629
4.998
4.049
0.768
9.764
4.104
2.437
6.224
3.300
3.755
2.077
9.606
4.452
4.854
0.857
9.470
1.523
5.886
0.597
2.963
1.249
1.269
0.202
1.716
9.484
4.121
15.614
20.328
1.072
2.739
12.074

5.504
3.386
4.177
3.271
4.991
4.183
10.765
8.359
15.050
10.785
2.711
1.828
1.471
2.987
5.412
6.017
0.376
4.634
2.637
5.405
11.358
2.635
3.990
8.260
5.137
1.797
4.512
7.152
8.697
33.502
4.362
4.677
10.006
9.709
1.389
4.009
3.447
16.456
0.023
0.013
9.323
14.686
0.996
7.591
2.824
7.849
1424.714
9.358
3.110
1.562

3.892
7.300
5.335
3.004
5.907
9.059
12.438
9.913
2.405

kód pac rameno

materiál	uNK z Ly	NK+ z Ly	NK++ z Ly	NK+++ z Ly	T z Ly	NKT z Ly
K	18.16	17.24	0.92		56.06	11.36
K	6	5.09	0.91		75.63	1.62
K	16.43	15.34	1.09		58.68	4.26
K	9.82	9.11	0.71		71.62	5.34
K	13.12	3.22	9.9		70.42	6.55
K	8.2	7.76	0.44		69.12	16
K	7.75	7.4	0.35		74.71	8.23
K	4.09	3.21	0.88		79.63	3.94
K	7.05	6.17	0.88		67.34	11.84
K	11.75	10.96	0.79		66.19	10.21
K	9.25	8.92	0.33		71.71	3.77
K	10.63	9.68	0.95		73.83	2.47
K	10.08	9.52	0.56		75.81	4.05
K	15.82	14.59	1.23		56.64	20.69
K	19.95	19.2	0.75		61.88	15.63
K	9.93	9.45	0.48		75.75	5
K	5.71	5.36	0.35		74.66	5.27
K	8.81	8.36	0.45		58.08	12.85
K	7.42	6.99	0.43		69.22	13.46
K	12	11.59	0.41		74.56	2.35
K	8.91	8.53	0.38		70.99	4.99
K	14.03	13.54	0.49		62.91	10.18
K	12.92	12.61	0.31		70.88	8.24
K	35.03	33.25	1.78		33.8	21.23
K	5.43	4.71	0.72		80.59	5.46
K	4.85	4.65	0.2		71.75	6.17
K	18.15	17.56	0.59		68.15	3.46
K	8.3	7.69	0.61		78.4	2.52
K	5.94	5.78	0.16		79.79	2.86
K	4.71	4.12	0.59		74.38	1.86
K	8.38	7.82	0.56		68.15	3.89
K	14.23	13.8	0.43		65.49	8.51
K	8.95	8.27	0.68		73.39	2.84
K	3.85	3.68	0.17		80.62	3.09
K	12.15	11.35	0.8		70.45	4.23
K	9.99	9.6	0.39		75.5	4.71
K	7.8	7.39	0.41		81.41	3.19
K	15.98	15.01	0.97		62.85	6.07
K	8.65	8.33	0.32		74.48	2.82
K	8.65	8.32	0.33		75.5	2.56
K	7.52	7.1	0.42		72.55	1.17
K	24.47	23.86	0.61		63.55	2.78
K	10.15	9.38	0.77		72.2	2.06
K	7.06	5.55	1.51		78.43	2.7
K	7.58	6.89	0.69		72.32	5.89
K	12.75	11.99	0.76		73.55	7.67
K	2.63	2.27	0.36		77.9	3.24
K	12.11	11.6	0.51		70.92	5.1

NK-A-P-007A	K	12.44	11.83	0.61		62.88	5.89
NK-A-O-019A	K	15.31	14.65	0.66		66.62	2.76
NK-A-P-008A	K	13.91	13.26	0.65		71.37	1.78
NK-A-J-012A	K	24.37	23.79	0.58		55.48	4.32
NK-A-J-013A	K	12.86	12.34	0.52		74.5	4.78
NK-A-LB-0CA	K	13.12	12.93	0.19		71.93	2.63
NK-A-O-009A	K	4.57	4.43	0.14		73.51	3.84
NK-A-J-015A	K	6.63	5.01	1.62		74.43	1.59
NK-A-B-008A	K	18.77	17.6	1.17		66.07	5.64
NK-A-O-020A	K	17.47	16	1.47		6.65	3.29
NK-A-LB-0CA	K	12.64	11.88	0.76		65.42	10.55
NK-A-LB-0CA	K	20.62	19.53	1.09		65.58	2.15
NK-A-P-009A	K	16.18	15.67	0.51		64.89	4.29
NK-A-J-016A	K	3.84	3.55	0.29		82.33	5.43
NK-A-O-021A	K	13.92	12.47	1.45		69.91	3.18
NK-A-O-021A	K	6.93	6.41	0.52		74.77	8.08
NK-A-LB-0CA	K	10.69	10.29	0.4		71.04	3.2
NK-A-P-008A	K	6.68	6.02	0.66		75.94	6.18
NK-A-O-029A	K	3.84	2.97	0.87		70.3	13.14
NK-A-O-029A	K	13.15	12.3	0.85		73.33	4.71
NK-A-O-029A	K	18.12	17.58	0.54		70.36	2.3
NK-A-O-029A	K	10.13	9.67	0.46		72.45	4.89
NK-A-O-029A	K	8.38	7.6	0.78		71.81	2.48
NK-A-O-030A	K	9.1	8.8	0.3		59.01	9.22
NK-A-O-030A	K	12.2	11.58	0.62		71.46	2.98
NK-A-B-011A	K	16.38	13.86	2.52		60.6	8.57
NK-A-P-009A	K	13.79	12.98	0.81		64.68	8.08
NK-A-B-012A	K	21.91	18.24	3.67		53.86	1.94
NK-A-O-030A	K	11.56	11.34	0.22		49.29	26.81
NK-A-B-013A	K	7.05	6.62	0.43		77.48	0.94
NK-A-B-014A	K	5.61	4.92	0.69		77.94	5.45
NK-A-O-030A	K	3.79	3.39	0.4		83.53	3.94
NK-A-o-037A	K	16.76	15.84	0.92		72.5	2.22
NK-A-B-017A	K	11.99	11.42	0.57		74	3.58
NK-A-B-018A	K	12.89	12.62	0.27		65.83	1.52
NK-A-B-020A	K	13.338	11.718	1.62		58.07	15.99
NK-A-B-018A	K	6.24	5.29	0.95		82.37	5.18
NK-A-O-040A	K	14.06	12.42	1.64		68.94	6.89
NK-A-B-021A	K	6.23	5.96	0.27		82.31	0.94
NK-A-B-021A	K	7.08	6.47	0.61		70.55	0.63
NK-A-B-021A	K	15.98	15.2	0.78		68.48	4.66
NK-A-O-041A	K	17.02	16.73	0.29		68.2	2.73
NK-A-B-027A	K	11.3	10.87	0.43		75.28	4.24
NK-A-B-028A	K	8.99	7.79	1.2		73.54	5.57
NK-A-B-030A	K	13.68	3	10.68		42.28	39.57
NK-A-B-031A	K	13.46	12.05	1.41		70.02	4.69
NK-A-O-041A	K	5.64	4.44	1.2		78.15	0.41
NK-A-B-034A	K	5.07	4.71	0.36		69.13	15.08
NK-A-B-035A	K	21.39	20.73	0.66		57.65	4.32
NK-A-B-035A	K	12.54	10.92	1.62		70.03	4.1

NK-A-B-03εA	K	4.26	3.47	0.79		73.16	10.79
NK-A-B-03εA	K	19.49	18.32	1.17		57.17	12.56
NK-A-B-04(A	K	7.78	7.1	0.68		67.02	10.28
NK-A-B-04A	K	8.38	7.93	0.45		62.42	14.63
NK-A-V-00εA							
NK-A-o-037A	K	16.76	15.84	0.92		72.5	2.22
NK-A-V-00A	B	19.5	2.69	16.81	7.61	74.57	3.39
NK-A-V-00A	B	63.1	3.73	59.37	39.75	28.67	4.29
NK-A-A-00A	B	17.6	1.71	15.89	9.64	76.24	4.33
NK-A-J-00A	B	39.16	1.95	37.21	19.06	50.99	5.91
NK-A-J-00A	B	39	3.47	35.53	21.07	50.84	7.67
NK-A-V-00A	B	18.03	4.35	13.68	9.93	70.82	9.02
NK-A-J-00A	B	39.51	3.85	35.66	20.84	49.89	6.11
NK-A-B-00A	B	16.43	1.57	14.86	4.53	77.62	2.32
NK-A-O-00A	B	30.55	2.15	28.4	13	61.11	5.59
NK-A-J-00A	B	42.25	8.37	33.88	8.31	47.5	5.79
NK-A-B-00A	B	10.6	3.13	7.47	1.43	78.46	6.87
NK-A-A-00A	B	21.01	2.43	18.58	7.47	69.2	6.4
NK-A-O-00A	B	16.54	8.22	8.32	3.84	67.88	11.53
NK-A-O-00A	B	24.64	6.16	18.48	9.69	56.55	14.8
NK-A-A-00A	B	37.14	4.05	33.09	18.84	47.95	9.21
NK-A-J-00A	B	23.52	3.62	19.9	10.51	70.49	3.97
NK-A-O-00A	B	10.43	1.29	9.14	2.03	62.76	26.03
NK-A-LB-00A	B	28.82	1.63	27.19	13.79	59.21	10.97
NK-A-L-00A	B	24.9	3.08	21.82	11.87	59.95	8.75
NK-A-B-00A	B	38.82	8.24	30.58	13.8	55.11	3.81
NK-A-V-00A	B	37.57	2.89	34.68	10.24	55.9	4.85
NK-A-LB-00A	B	23.04	4.82	18.22	8.14	68.54	6
NK-A-V-00A	B	42.39	6.29	36.1	12.66	50.85	5.65
NK-A-O-00A	B	28.76	8.1	20.66	5.46	62.63	7.33
NK-A-O-00A	B	16.79	1.12	15.67	11.57	77.55	2.73
NK-A-LB-00A	B	17.38	2.1	15.28	5.15	70.54	7.18
NK-A-J-00A	B	44.1	4.86	39.24	20.5	49.05	4.46
NK-A-P-01A	B	18	7.64	10.36	3.65	73.88	4.34
NK-A-H-00A	B	40.11	6.96	33.15	11.47	54.3	4.23
NK-A-O-00A	B	28.56	8.2	20.36	3.32	64.54	2.93
NK-A-H-00A	B	29.35	3.07	26.28	6.49	59.74	8.74
NK-A-J-00A	B	14.32	8.61	5.71	1.62	71.03	11.05
NK-A-A-00A	B	24.45	3.34	21.11	7.06	65.54	4.4
NK-A-O-01A	B	17.6	6.68	10.92	3.05	74.73	6.1
NK-A-O-00A	B	26.11	11	15.11	5.09	64.09	4
NK-A-O-01A	B	19.97	15.35	4.62	0.66	61.55	14.85
NK-A-J-00A	B	18.67	0.91	17.76	12.11	71.93	8.6
Nk-A-A-00A	B nekr	36.9	3.97	32.93	16.23	54.34	5.38
NK-A-V-00A	B	34.09	2.6	31.49	16	56.67	7.39
NK-A-O-01A	B	35.67	4.18	31.49	9	60.08	3.09
NK-A-O-01A	B	23.72	5.64	18.08	4.98	68.29	5.54
NK-A-B-00A	B	30.73	10.59	20.14	10.16	62.15	3.3
NK-A-B-00A	B	22.34	4.98	17.36	9	70.77	2.47
NK-A-O-01A	B	27.98	1.99	25.99	19.5	62.37	8.02

NK-A-V-009	A	B	21.02	4.97	16.05	5.34	71.81	4.12
NK-A-O-01	A	B	39.88	5.52	34.36	7.11	51.18	5.99
NK-A-O-01	A	B	26.06	5.03	21.03	11.66	66.03	4.16
NK-A-J-011	A	B	14.02	1.5	12.52	4.4	80.08	2.55
NK-A-P-002	A	B	22.55	2.53	20.02	9.21	68.78	4.26
NK-A-O-01	A	B	55.08	11.03	44.05	5.43	33.2	2.74
NK-A-P-003	A	B	40.02	2.24	37.78	23.73	51.41	3.46
NK-A-J-012	A	B	57.33	5.6	51.73	34.8	35	2.32
NK-A-J-013	A	B	56.48	2.17	54.31	41.91	36.7	3.8
NK-A-LB-00	A	B	47.15	2.64	44.51	25.98	48.27	1.88
NK-A-O-00	A	B	32.85	4.85	28	15.35	59.37	6.14
NK-A-J-015	A	B	13.07	3.8	9.27	3.75	69.12	8.74
NK-A-B-008	A	B	9.26	2.8	6.46	0.85	73.04	7.54
NK-A-O-02	A	B	23.9	1.35	22.55	1.05	59.89	4.51
NK-A-LB-00	A	B	41.08	3.94	37.14	14.57	53.14	3.26
NK-A-LB-00	A	B	50.15	2.36	47.79	11.34	42.33	4
NK-A-P-004	A	B	21.65	15.64	6.01	2.33	69.31	4.44
NK-A-J-016	A	B	35.1	2.06	33.04	8.35	56.16	8.17
NK-A-O-02	A	B	18.2	3.03	15.17	3.15	73.71	4.14
NK-A-O-02	A	B	27.47	2.49	24.98	8.67	63.66	4.07
NK-A-LB-00	A	B	24.46	1.54	22.92	5.35	62.3	10.5
NK-A-P-005	A	B	62.04	1.07	60.97	54.79	32.62	2.51
NK-A-O-02	A	B	28.43	14.24	14.19	7.75	61.74	6.42
NK-A-O-02	A	B	17.3	1.09	16.21	6.71	72.66	3.66
NK-A-O-02	A	B	33.24	4.1	29.14	15.4	59.38	3.29
NK-A-O-02	A	B	17	4.98	12.02	3.02	71.28	5.19
NK-A-O-02	A	B	33.8	4.27	29.53	18.01	52.31	2.82
NK-A-O-03	A	B	39.64	4.89	34.75	9.35	54.96	2.47
NK-A-O-03	A	B	18.56	1.51	17.05	11.1	73.65	5.81
NK-A-B-01	A	B	77.04	2.16	74.88	70.91	14.66	2.71
NK-A-P-006	A	B	52.01	3.9	48.11	16.31	30.37	5.91
NK-A-B-01	A	B	47.72	7.51	40.21	22.52	34.58	5.9
NK-A-O-03	A	B	56.64	4.69	51.95	12.81	26.77	1.78
NK-A-B-01	A	B	50.66	2.08	48.58	21.8	41.69	4.84
NK-A-B-01	A	B	14.56	2.11	12.45	4.4	51.62	28.92
NK-A-O-03	A	B	27.4	3.64	23.76	11.8	56.08	3.93
NK-A-o-03	A	B	15.87	3.95	11.92	3.2	76.58	2.74
NK-A-B-01	A	B	69.49	3.29	66.2	48.53	25.24	1.19
NK-A-B-01	A	B	38.13	10.37	27.76	13.13	52.07	1.61
NK-A-B-02	A	B	18.2	2.28	15.92	7.45	53.35	27.44
NK-A-B-01	A	B	33.42	2.91	30.51	19.82	57.94	4.64
NK-A-O-04	A	B	67.75	3.78	63.97	41.15	28.3	2.78
NK-A-B-02	A	B	82.45	1.95	80.5	59.19	14.98	1.88
NK-A-B-02	A	B	79.01	3.22	75.79	30.43	12.96	1.84
NK-A-B-02	A	B	28.42	8.44	19.98	11.32	64.11	2.35
NK-A-O-04	A	B	46.42	4.86	41.56	26.98	40.76	3.28
NK-A-B-02	A	B	68.76	1.49	67.27	46.68	24.83	4.38
NK-A-B-02	A	B	51.57	8.26	43.31	19.25	40.01	4.99
NK-A-B-03	A	B	33.01	6.09	26.92	15.42	57.19	3.63
NK-A-B-03	A	B	14.08	1.67	12.41	3.12	78.77	5.88

NK-A-O-04	A	B	17.74	2.72	15.02	7.04	74.87	4.73
NK-A-B-03	A	B	37.6	3.76	33.84	17.63	56.49	3.04
NK-A-B-03	A	B	17.97	2.77	15.2	6.44	73.64	6.45
NK-A-B-03	A	B	36.83	6.99	29.84	18.28	54.67	5.3
NK-A-B-03	A	B	36.64	7.87	28.77	12.08	44.73	11.4
NK-A-B-03	A	B	14.46	1.08	13.38	9.26	67.03	3.61
NK-A-B-04	A	B	44.46	1.69	42.77	26.7	44.87	7.76
NK-A-B-04	A	B	57.44	3.57	53.87	25.81	30.64	7.58
NK-A-V-00	A	B	38.96	10.77	28.19	3.23	45.42	9.43
NK-A-o-03	A							
NK-B-O-00	B	K	26.46	25.63	0.83		53.36	8.79
NK-B-J-006	B	K	14.34	13.7	0.64		66.89	5.15
NK-B-V-00	B	K	9.99	9.58	0.41		74.6	6.15
NK-B-O-01	B	K	22.15	21.96	0.19		67.12	2.86
NK-B-B-007	B	K	9.45	8.75	0.7		71.1	8.18
NK-B-O-01	B	K	16.72	15.91	0.81		64.94	2.99
NK-V-B-01	B	K	4.5	3.31	1.19		78.81	7.67
NK-V-B-011	B	K	11.36	10.53	0.83		74.64	3.67
NK-V-B-01	B	K	17.2	16.65	0.55		65.68	3.88
NK-B-J-010	B	K	9.52	8.54	0.98		59.21	15.19
NK-B-V-01	B	K	12.47	11.57	0.9		75.09	3.43
NK-B-J-014	B	K	4.25	3.99	0.26		81.03	2.79
NK-B-O-02	B	K	29.43	28.31	1.12		52.6	4.86
NK-B-LB-00	B	K	9.72	8.75	0.97		62.23	5.14
NK-B-B-00	B	K	17.99	17.77	0.22		67.04	4.91
NK-B-J-017	B	K	17.67	16.24	1.43		69.63	4.72
NK-B-B-01	B	K	16.06	15.08	0.98		65.23	5.17
NK-B-O-02	B	K	9.22	8.11	1.11		70.31	6.35
NK-B-O-03	B	K	13.49	12.92	0.57		74.12	2.92
NK-B-O-03	B	K	8.07	7.42	0.65		72.26	8.28
NK-B-O-03	B	K	15.43	14.61	0.82		72.26	4.02
NK-B-O-03	B	K	3.29	3.07	0.22		80.04	7.19
NK-B-B-01	B	K	17.97	16.79	1.18		63.53	6.35
NK-B-B-021	B	K	6.66	6.17	0.49		81.76	4.33
NK-B-B-02	B	K	11.82	10.45	1.37		72.75	4.72
NK-B-B-02	B	K	14.26	13.55	0.71		73.15	3.87
NK-B-O-04	B	K	4.45	4.13	0.32		77.41	1.28
NK-B-O-04	B	K	7.86	7.48	0.38		74.83	3.5
NK-B-B-02	B	K	13.92	13.09	0.83		76.34	2.94
NK-B-OI-04	B	K	4.74	4.32	0.42		82.43	5.6
NK-B-B-03	B	K	11.48	10.25	1.23		63.84	9.81
NK-B-B-03	B	K	21.92	20.9	1.02		62.97	2.14
NK-B-B-03	B	K	15.17	14.7	0.47		66.25	2.8
NK-B-B-04	B	K	19.76	18.78	0.98		66.4	1.88
NK-B-B-04	B	K	6.98	6.52	0.46		66.14	11.07
NK-B-B-04	B	K	17.2	16.65	0.55		65.68	3.88
NK-B-O-00	B	B	40	4.42	35.58	6.44	52.74	4.83
NK-B-J-006	B	B	14.16		11.73	8.68	35.61	3.46
NK-B-V-00	B	B	18.59	4.01	14.58	4.21	72.86	4.73
NK-B-O-01	B	B	30.16	7.63	22.53	11.13	56.47	11.13

NK-B-B-007	B	32.02	1.88	30.14	7.54	60.22	5.95
NK-B-O-011	B	30.92	4.13	26.79	5.32	55.6	10.64
NK-V-B-010	B	58.35	2.88	55.47	37.07	36.77	2.32
NK-V-B-011	B	35.59	6.74	28.85	18.98	49.81	5.24
NK-V-B-012	B	48.05	4.74	43.31	9.39	43.91	3.49
NK-B-J-010	B	19.87	8.39	11.48	1.81	65.04	13.28
NK-B-V-013	B	48.4	2.1	46.3	30.32	43.49	2.81
NK-B-J-014	B	31.95	3.96	27.99	15.78	57.42	7.3
NK-B-O-020	B	41.56	2.98	38.58	18.98	40.04	2.92
NK-B-LB-008	B	33.74	3.99	29.75	15.67	52.7	9.82
NK-B-B-009	B	39.37	5.93	33.44	8.27	47.91	6.17
NK-B-J-017	B	44.15	4.07	40.08	27.62	46.94	4.56
NK-B-B-010	B	16.9	1.74	15.16	5.16	76.28	4.95
NK-B-O-021	B	29.84	8.96	20.88	3.56	55.6	6.82
NK-B-O-031	B	26.68	4.82	21.86	18.14	66.38	2.92
NK-B-O-032	B	29.03	9.24	19.79	3.43	51.51	12.92
NK-B-O-033	B	36.54	5.7	30.84	11.66	57.43	4.64
NK-B-O-034	B	29.24	1.5	27.74	15.77	62.15	5.32
NK-B-B-015	B	45.31	11.82	33.49	3.53	40.09	5.68
NK-B-B-021	B	31.84	2.02	29.82	3.22	60.27	6.1
NK-B-B-022	B	44.01	0.96	43.05	20.44	50.91	3.02
NK-B-B-024	B	34.3	4.59	29.71	16.18	55.68	5.03
NK-B-O-041	B	41.53	10.28	31.25	22.68	50.3	4.41
NK-B-O-042	B	27.39	2.5	24.89	14.48	62.5	7.46
NK-B-B-025	B	39.05	3.78	35.27	19.13	55.53	2.53
NK-B-OI-043	B	9.84	2.42	7.42	3.48	81.27	3.92
NK-B-B-032	B	38.13	1.67	36.46	21.7	55.37	3.99
NK-B-B-037	B	50.13	2.88	47.25	19.69	53.29	3.4
NK-B-B-038	B	37.02	7.17	29.85	4.82	53.2	6.06
NK-B-B-046	B	43.07	2.81	40.26	14.97	48.17	4.8
NK-B-B-047	B	17.53	1.24	16.29	3.48	75.68	5.05
NK-B-B-048	B	26.43	1.84	24.59	8.94	68.75	3.9

NKc z NK	NKr z NK	NK++ z NK	CD56 - 16+ z NK	Nkr/Nkc
88.34	4.3	3.39	7.21	0.049
80.73	3.94	4.53	15.33	0.049
76.7	2.77	2.42	21.06	0.036
88.18	4.24	3.59	7.58	0.048
89.49	5.28	4.91	5.23	0.059
90.25	3.79	3.25	5.96	0.042
87.45	6.32	4.68	6.23	0.072
76.63	17.07	15.94	6.3	0.223
86.63	6.81	5.82	5.86	0.079
84.81	8.52	7.17	6.67	0.100
90.85	2.8	2.2	6.34	0.031
86.21	5.78	5.12	8.01	0.067
91.29	2.95	2.62	5.76	0.032
88.88	5.76	5.71	5.37	0.065
90.93	3.54	3.2	5.48	0.039
89.97	5.23	3.72	4.79	0.058
80.54	5.67	4.6	13.71	0.070
85.87	6.2	5.48	7.92	0.072
83.14	7.33	5.17	9.53	0.088
88.28	3.56	2.8	8.16	0.040
89.34	4.69	3.42	5.96	0.052
87.57	3.14	2.35	9.29	0.036
86.49	3.29	2.55	10.21	0.038
88.75	3.21	2.6	8.04	0.036
83.4	4.98	4.5	11.63	0.060
90.03	5.85	3.42	4.12	0.065
95.35	2.8	1.75	1.85	0.029
93.64	2.19	2.09	4.28	0.023
80.14	3.43	2.37	16.43	0.043
69.52	9.2	6.3	21.29	0.132
91.96	4.26	3.53	3.77	0.046
86.25	3.75	2.79	10	0.043
84.96	5.87	4.12	9.18	0.069
71.36	2.15	0.9	26.48	0.030
82.62	5.99	4.89	11.39	0.073
85.29	4.21	3.38	10.5	0.049
93.34	4.52	2.78	2.14	0.048
85.85	4.45	3.25	9.69	0.052
90.96	3.89	2.37	5.15	0.043
86.89	3.21	1.94	9.9	0.037
82.73	5.34	3.24	11.93	0.065
91.98	3.03	2.21	5	0.033
86.18	4.84	3.28	8.98	0.056
84.33	8.86	7.46	6.8	0.105
78.03	5.08	4.08	16.89	0.065
89.33	3.53	2.7	7.14	0.040
83.41	6.71	3.53	9.88	0.080
90.29	4.78	3.43	4.93	0.053

80.91	6.62	3.38	12.05	0.082
90.58	2.49	1.39	6.93	0.027
90.15	3.56	3.03	6.3	0.039
87.77	2.18	1.64	10.05	0.025
89.41	3.71	3	6.85	0.041
89.12	1.7	0.66	9.16	0.019
85.79	3.88	2.06	10.32	0.045
78.03	16.21	14.03	5.77	0.208
92.18	3.21	2.16	4.6	0.035
87.81	4.78	4.02	7.41	0.054
92.68	2.68	1.71	4.64	0.029
89.14	4.22	3.44	6.64	0.047
91.95	3.31	2.32	4.74	0.036
79.38	6.52	4.41	14.1	0.082
88.34	3.57	2.54	8.09	0.040
87.51	3.87	2.81	8.62	0.044
88.72	2.04	1.49	9.24	0.023
75.32	6.44	4.6	20.03	0.086
78.37	7.06	4.01	14.57	0.090
85.52	4.79	3.28	9.69	0.056
88.84	3.51	2.34	7.64	0.040
81.75	4.2	2.75	14.06	0.051
80.95	7.93	5.22	11.13	0.098
84.66	8.24	2.83	6.5	0.097
93.08	4.93	4.48	1.92	0.053
80.15	12.71	8.3	7.07	0.159
88.13	7.02	5.29	4.86	0.080
81.11	13.77	10.33	5.12	0.170
87.1	2.19	0.73	10.71	0.025
53.14	6.97	3.63	9.89	0.131
68.64	10.84	5.88	20.52	0.158
79.37	7.62	5.66	13.01	0.096
89.75	6.53	4.34	3.53	0.073
82.22	4.81	2.74	13.07	4.770
90.05	4.72	1.3	5.23	4.023
82.3	5.76	4.49	11.94	0.070
80.08	10.56	8.15	9.36	0.132
84.57	10.03	6.16	5.4	0.119
89.33	5.01	3.18	5.66	0.056
81.38	5.08	3.49	13.54	0.062
87.76	6.89	5.53	5.34	0.079
95.08	3.92	1.82	1	0.041
86.45	5.41	3.05	7.91	0.063
77.18	11.05	8.94	11.68	0.143
80.03	18.28	4.43	1.69	0.228
84.46	3.74	1.55	11.26	0.044
75.78	13.51	10.84	10.7	0.178
83.83	9.75	5.6	6.42	0.116
85.31	4.14	3.03	10.55	0.049
81.88	10.54	7.04	7.54	0.129

71.21	14.68	7.54	13.87	0.206
87.07	7.14	3.23	5.61	0.082
79.2	6.47	4.24	14.33	0.082
73.44	3.93	3.05	12.63	0.054
89.75	6.53	4.34	3.53	0.073
18.24	79.44	75.05	2.03	4.355
10.57	88.28	86.26	1.16	8.352
13.54	85.2	81.98	0.98	6.292
8.85	90	87.5	1.09	10.169
11.01	87.67	85.85	1.19	7.963
27.71	71.69	71.08	0.6	2.587
8.93	89.96	87.25	1.05	10.074
14.23	84.11	81.45	1.5	5.911
24.5	74.53	73	0.9	3.042
20.58	78.81	72.96	0.49	3.829
33.05	64.62	60.81	2.22	1.955
16.72	81.44	78.64	1.53	4.871
36.24	58.15	50.84	4.21	1.605
27.07	71.18	69.08	1.75	2.629
16.55	82.72	80.44	0.66	4.998
19.58	79.28	76.06	0.97	4.049
55.69	42.75	40.29	1.36	0.768
9.25	90.32	88.4	0.42	9.764
19.65	80.65	80.35	0	4.104
28.77	70.12	66.86	1.1	2.437
13.74	85.52	83.93	0.68	6.224
22.69	74.87	71.71	2.28	3.300
20.9	78.48	76.46	0.62	3.755
32.07	66.62	63.94	1.24	2.077
9.28	89.14	87.42	1.58	9.606
17.97	80	75.08	1.58	4.452
16.89	81.99	79.61	1.04	4.854
52.14	44.71	43.14	3.14	0.857
9.45	89.49	81.22	1.06	9.470
39.11	59.55	56.16	1.27	1.523
14.42	84.87	82.43	0.6	5.886
59.58	35.55	33.47	4.67	0.597
24.8	73.47	70.49	1.73	2.963
43.33	54.1	52.93	2.58	1.249
42.07	53.4	49.54	4.37	1.269
78.57	15.87	15.08	5.56	0.202
36.53	62.7	60.91	0.57	1.716
9.4	89.15	86.8	1.45	9.484
19.25	79.33	77.15	1.42	4.121
5.99	93.53	82.09	0.4	15.614
4.63	94.12	76.76	0.57	20.328
46.85	50.2	49.13	2.84	1.072
25.94	71.04	69.41	3.01	2.739
7.54	91.04	90.48	1.27	12.074

14.69	80.85	77.67	4.23	5.504
22	74.5	72.76	3.54	3.386
18.6	77.7	76.12	3.59	4.177
22.63	74.02	72.85	2.96	3.271
16.37	81.71	80.37	1.74	4.991
18.83	78.77	77	2.39	4.183
8.23	88.6	87.36	2.74	10.765
10.42	87.1	86	2.47	8.359
6.16	92.71	91.86	1.1	15.050
8.42	90.81	90.17	0.77	10.785
26.56	72	70.12	1.18	2.711
32.48	59.36	57.18	8.11	1.828
37.04	54.5	49.21	8.47	1.471
24.97	74.58	73	0.39	2.987
15.43	83.51	81.58	1.06	5.412
14.2	85.44	85.07	0.36	6.017
67.81	25.48	23.34	6.71	0.376
17.69	81.98	81	0.33	4.634
26.19	69.07	66.11	4.47	2.637
15.2	82.15	81.77	2.22	5.405
8.07	91.66	88.33	0.11	11.358
27	71.14	70.77	1.85	2.635
18.95	75.61	77.61	3.22	3.990
10.23	84.5	80.85	5.27	8.260
15.83	81.32	79.41	2.85	5.137
33.28	59.8	57.18	6.91	1.797
17.28	77.97	73.11	4.75	4.512
12.14	86.83	82.67	1.02	7.152
10.18	88.54	87.45	1.28	8.697
2.89	96.82	96.04	0.3	33.502
18.63	81.26	79.46	0.11	4.362
17.32	81.01	72.07	1.68	4.677
8.89	88.95	86.82	2.17	10.006
9.28	90.1	86.78	0.63	9.709
41.48	57.6	53.13	0.85	1.389
19.62	78.66	74.18	1.72	4.009
21.83	75.25	66.78	2.87	3.447
5.7	93.8	92.67	0.5	16.456
31.75	66.77	63.8	1.48	0.023
41.89	57.4	55.26	0.71	0.013
9.58	89.31	86.47	1.11	9.323
6.34	93.11	92.38	0.55	14.686
90.11	89.74	9.71	0.18	0.996
11.64	88.36	87.4	0	7.591
24.76	69.93	63.31	5.31	2.824
10.95	85.95	83.89	3.11	7.849
0.07	99.73	96.7	0.13	1424.714
9.61	89.93	87.25	0.46	9.358
23.93	74.42	72.31	1.65	3.110
38.55	60.22	59.14	1.24	1.562

20.32	79.08	77.48	0.61	3.892
11.93	87.09	85.34	0.99	7.300
15.65	83.49	79.85	0.86	5.335
24.29	72.96	71.66	2.75	3.004
14.33	84.65	80.78	1.01	5.907
9.84	89.14	86.54	1.02	9.059
7.39	91.92	91.49	0.69	12.438
9.07	89.91	86.51	0.74	9.913
28.57	68.72	64.29	2.71	2.405
93.97	1.74	1.37	4.19	0.019
91.43	3.15	2.27	5.42	0.034
91.42	3.34	2.94	5.24	0.037
95.63	1.29	0.7	3.08	0.013
86.5	6.28	4.66	7.22	0.073
88.91	4.11	2.83	6.98	0.046
80.72	7.39	6.38	11.88	0.092
85.5	3.97	3.11	10.53	0.046
86.27	4.8	2.47	8.94	0.056
82.5	9.12	6.83	8.39	0.111
91.61	3.98	2.7	4.42	0.043
82.26	7.09	4.42	10.65	0.086
88.49	3.64	2.16	7.77	0.041
80.34	5.03	3.62	14.63	0.063
88.89	1.48	0.72	9.62	0.017
92.45	4.15	3.5	3.4	0.045
87.1	5.56	3.55	7.34	0.064
84.32	7.97	5.35	7.71	0.095
87.87	4.13	2.97	8	0.047
83.6	6.73	3.83	9.67	0.081
91.14	5.03	3.88	3.83	0.055
76.87	9.26	4.61	13.87	3.009
89.94	3.78	2.17	6.28	0.042
87.57	7.43	4.95	5	0.085
86.35	8.54	6.73	5.1	0.099
90.78	2.67	1.7	6.55	0.029
77.99	6	4.76	16.02	0.077
87.55	7.37	5.13	5.08	0.084
89.24	7.21	4.2	3.55	0.081
86.41	7.12	4.75	6.47	0.082
82.91	5.62	4.21	11.47	0.068
90.16	4.01	3.14	5.65	0.044
87.78	4.5	2.31	7.45	0.051
87.46	3.91	2.32	8.63	0.045
72.55	7.16	4.84	20.29	0.099
86.27	4.8	2.47	8.94	0.056
17.67	81.54	78.78	0.79	4.615
8.16	89.87	83.47	1.52	11.013
28.81	70	67.06	1.08	2.430
36.76	60.79	59.57	2.14	1.654

10.99	88.15	86.32	0.8	8.021
20.23	77.42	75.95	2.35	3.827
8.79	90.17	89.53	0.99	10.258
26.08	70.81	69.85	2.99	2.715
10.7	87.63	85.74	1.5	8.190
52.11	43.68	42.11	4.21	0.838
7.72	90.46	89.59	1.83	11.718
17.52	79.05	78.23	2.77	4.512
6.51	80.78	77.94	12.71	12.409
13.98	83.73	82.13	1.91	5.989
17.11	80.8	78.51	2.09	4.722
16.53	80.4	79.25	3.07	4.864
13.73	82.83	82.07	3.44	6.033
7.39	91.9	74.3	0.7	12.436
9.76	87.92	86.49	2.32	9.008
1.95	97.49	72.98	0.56	49.995
13.28	82.67	76.64	0	6.225
0	100	90.62	0	0.000
22.6	75.34	71.58	2.05	3.334
23.13	76.02	75.07	0.85	3.287
10.38	89.07	85.52	0.55	8.581
20.27	79.26	76.26	0.67	3.910
32.07	66.58	56.25	1.36	2.076
14.05	85.18	83.56	0.76	6.063
17.65	81	80.06	1.35	4.589
27.1	71.94	66.29	0.97	2.655
9.77	88.87	88.28	1.36	9.096
12.3	86.86	85.69	0.84	7.062
23.17	75.49	67.99	1.34	3.258
15.43	83.07	80.26	1.5	53.507
10.76	88.05	83.45	1.19	8.183
10.07	89.76	86.36	0.17	8.914

norma

4,5-18,0%

3,5-17,5%

0,3-1,0%

komentář

NK = CD56+CD3-

NK+=CD16-
CD56dimNK++ = CD16-
CD56bright

kód pac.

	materiál	NK z Ly	NK+ z Ly	NK++ z Ly	
B	NK-B-O-005-BP	K	26.46	25.63	0.83
B	NK-B-J-006-MN	K	14.34	13.7	0.64
B	NK-B-V-006-LS	K	9.99	9.58	0.41
B	NK-B-O-014-NM	K	22.15	21.96	0.19
B	NK-B-B-007-TP	K	9.45	8.75	0.7
B	NK-B-O-017-VO	K	16.72	15.91	0.81
B	NK-V-B-010-VM	K	4.5	3.31	1.19
B	NK-V-B-011-AK	K	11.36	10.53	0.83
B	NK-V-B-012-JH	K	17.2	16.65	0.55
B	NK-B-J-010-RB	K	9.52	8.54	0.98
B	NK-B-V-013-DH	K	12.47	11.57	0.9
B	NK-B-J-014-BR	K	4.25	3.99	0.26
B	NK-B-O-020-TL	K	29.43	28.31	1.12
B	NK-B-LB-008-BM	K	9.72	8.75	0.97
B	NK-B-B-009-LZ	K	17.99	17.77	0.22
B	NK-B-J-017-KM	K	17.67	16.24	1.43
B	NK-B-B-010-MP	K	16.06	15.08	0.98
B	NK-B-O-027-ZR	K	9.22	8.11	1.11
B	NK-B-O-032-ON	K	13.49	12.92	0.57
B	NK-B-O-035-LD	K	8.07	7.42	0.65
B	NK-B-O-034-MS	K	15.43	14.61	0.82
B	NK-B-O-039-ZP	K	3.29	3.07	0.22
B	NK-B-B-019-LK	K	17.97	16.79	1.18
B	NK-B-B-021-MT	K	6.66	6.17	0.49
B	NK-B-B-022-ZK	K	11.82	10.45	1.37
B	NK-B-B-024-MM	K	14.26	13.55	0.71
B	NK-B-O-041-LL	K	4.45	4.13	0.32
B	NK-B-O-043-MŠ	K	7.86	7.48	0.38
B	NK-B-B-029-KŘ	K	13.92	13.09	0.83
B	NK-B-OI-044-ZJ	K	4.74	4.32	0.42
B	NK-B-B-032-AS	K	11.48	10.25	1.23
B	NK-B-B-037-JP	K	21.92	20.9	1.02
B	NK-B-B-039-KM	K	15.17	14.7	0.47
B	NK-B-B-046-ZP	K	19.76	18.78	0.98
B	NK-B-B-047-MT	K	6.98	6.52	0.46
B	NK-B-B-045-JH	K	17.2	16.65	0.55

unknown

60,0-80,%

unknown

83,0-96,0%

0,0-7,0%

NK+++ = CD16-
CD56superbrightT= T lymfocyty
CD3+CD56-NKT = CD
56+CD3+NKc = cytotox =
CD56+CD16+NKr = regulační
=CD56+CD16-

NK+++ z Ly	T(CD3+CD56-) z Ly	NKT z Ly	NKc CD56+CD16+	NKr CD56+CD16- z NK
	53.36	8.79	93.97	1.74
	66.89	5.15	91.43	3.15
	74.6	6.15	91.42	3.34
	67.12	2.86	95.63	1.29
	71.1	8.18	86.5	6.28
	64.94	2.99	88.91	4.11
	78.81	7.67	80.72	7.39
	74.64	3.67	85.5	3.97
	65.68	3.88	86.27	4.8
	59.21	15.19	82.5	9.12
	75.09	3.43	91.61	3.98
	81.03	2.79	82.26	7.09
	52.6	4.86	88.49	3.64
	62.23	5.14	80.34	5.03
	67.04	4.91	88.89	1.48
	69.63	4.72	92.45	4.15
	65.23	5.17	87.1	5.56
	70.31	6.35	84.32	7.97
	74.12	2.92	87.87	4.13
	72.26	8.28	83.6	6.73
	72.26	4.02	91.14	5.03
	80.04	7.19	76.87	9.26
	63.53	6.35	89.94	3.78
	81.76	4.33	87.57	7.43
	72.75	4.72	86.35	8.54
	73.15	3.87	90.78	2.67
	77.41	1.28	77.99	6
	74.83	3.5	87.55	7.37
	76.34	2.94	89.24	7.21
	82.43	5.6	86.41	7.12
	63.84	9.81	82.91	5.62
	62.97	2.14	90.16	4.01
	66.25	2.8	87.78	4.5
	66.4	1.88	87.46	3.91
	66.14	11.07	72.55	7.16
	65.68	3.88	86.27	4.8

0,0-6,0%

2,5-13,5%

NK++ = CD16-
CD56brightpopulace nej.
Významu

CD56++ z NK	CD16+ z NK	Nkr/Nkc	kód pac.	materiál
1.37	4.19	0.019	NK-B-O-005-BP	B
2.27	5.42	0.034	NK-B-J-006-MN	B
2.94	5.24	0.037	NK-B-V-006-LS	B
0.7	3.08	0.013	NK-B-O-014-NM	B
4.66	7.22	0.073	NK-B-B-007-TP	B
2.83	6.98	0.046	NK-B-O-017-VO	B
6.38	11.88	0.092	NK-V-B-010-VM	B
3.11	10.53	0.046	NK-V-B-011-AK	B
2.47	8.94	0.056	NK-V-B-012-JH	B
6.83	8.39	0.111	NK-B-J-010-RB	B
2.7	4.42	0.043	NK-B-V-013-DH	B
4.42	10.65	0.086	NK-B-J-014-BR	B
2.16	7.77	0.041	NK-B-O-020-TL	B
3.62	14.63	0.063	NK-B-LB-008-BM	B
0.72	9.62	0.017	NK-B-B-009-LZ	B
3.5	3.4	0.045	NK-B-J-017-KM	B
3.55	7.34	0.064	NK-B-B-010-MP	B
5.35	7.71	0.095	NK-B-O-027-ZR	B
2.97	8	0.047	NK-B-O-032-ON	B
3.83	9.67	0.081	NK-B-O-035-LD	B
3.88	3.83	0.055	NK-B-O-034-MS	B
4.61	13.87	3.009	NK-B-O-039-ZP	B
2.17	6.28	0.042	NK-B-B-019-LK	B
4.95	5	0.085	NK-B-B-021-MT	B
6.73	5.1	0.099	NK-B-B-022-ZK	B
1.7	6.55	0.029	NK-B-B-024-MM	B
4.76	16.02	0.077	NK-B-O-041-LL	B
5.13	5.08	0.084	NK-B-O-043-MŠ	B
4.2	3.55	0.081	NK-B-B-029-KŘ	B
4.75	6.47	0.082	NK-B-OI-044-ZJ	B
4.21	11.47	0.068	NK-B-B-032-AS	B
3.14	5.65	0.044	NK-B-B-037-JP	B
2.31	7.45	0.051	NK-B-B-039-KM	B
2.32	8.63	0.045	NK-B-B-046-ZP	B
4.84	20.29	0.099	NK-B-B-047-MT	B
2.47	8.94	0.056	NK-B-B-045-JH	B

21,0 - 60,0 %

3,0-5,0%

18,0-55,0%

unknown

33,0-73,0%

NK = CD56+CD3-

NK+=CD16-
CD56dimNK++ = CD16-
CD56brightNK+++ = CD16-
CD56superbrightT= T lymphocyty
CD3+CD56-

NK z Ly	NK+ z Ly	NK++ z Ly	NK+++ z Ly	T(CD3+CD56-) z Ly
40	4.42	35.58	6.44	52.74
14.16		11.73	8.68	35.61
18.59	4.01	14.58	4.21	72.86
30.16	7.63	22.53	11.13	56.47
32.02	1.88	30.14	7.54	60.22
30.92	4.13	26.79	5.32	55.6
58.35	2.88	55.47	37.07	36.77
35.59	6.74	28.85	18.98	49.81
48.05	4.74	43.31	9.39	43.91
19.87	8.39	11.48	1.81	65.04
48.4	2.1	46.3	30.32	43.49
31.95	3.96	27.99	15.78	57.42
41.56	2.98	38.58	18.98	40.04
33.74	3.99	29.75	15.67	52.7
39.37	5.93	33.44	8.27	47.91
44.15	4.07	40.08	27.62	46.94
16.9	1.74	15.16	5.16	76.28
29.84	8.96	20.88	3.56	55.6
26.68	4.82	21.86	18.14	66.38
29.03	9.24	19.79	3.43	51.51
36.54	5.7	30.84	11.66	57.43
29.24	1.5	27.74	15.77	62.15
45.31	11.82	33.49	3.53	40.09
31.84	2.02	29.82	3.22	60.27
44.01	0.96	43.05	20.44	50.91
34.3	4.59	29.71	16.18	55.68
41.53	10.28	31.25	22.68	50.3
27.39	2.5	24.89	14.48	62.5
39.05	3.78	35.27	19.13	55.53
9.84	2.42	7.42	3.48	81.27
38.13	1.67	36.46	21.7	55.37
50.13	2.88	47.25	19.69	53.29
37.02	7.17	29.85	4.82	53.2
43.07	2.81	40.26	14.97	48.17
17.53	1.24	16.29	3.48	75.68
26.43	1.84	24.59	8.94	68.75

0 -8,0 %

7,5-25,0%

73,0-91,0

70,0-90,0 %

NKT = CD
56+CD3+NKc = cytotox =
CD56+CD16+NKr = regulační
=CD56+CD16-NK++ = CD16-
CD56brightpopulace nej.
Významu

NKT z Ly	NKc CD56+CD16+	NKr CD56+CD16- z		CD16+ z NK
		NK	CD56++ z NK	
4.83	17.67	81.54	78.78	0.79
3.46	8.16	89.87	83.47	1.52
4.73	28.81	70	67.06	1.08
11.13	36.76	60.79	59.57	2.14
5.95	10.99	88.15	86.32	0.8
10.64	20.23	77.42	75.95	2.35
2.32	8.79	90.17	89.53	0.99
5.24	26.08	70.81	69.85	2.99
3.49	10.7	87.63	85.74	1.5
13.28	52.11	43.68	42.11	4.21
2.81	7.72	90.46	89.59	1.83
7.3	17.52	79.05	78.23	2.77
2.92	6.51	80.78	77.94	12.71
9.82	13.98	83.73	82.13	1.91
6.17	17.11	80.8	78.51	2.09
4.56	16.53	80.4	79.25	3.07
4.95	13.73	82.83	82.07	3.44
6.82	7.39	91.9	74.3	0.7
2.92	9.76	87.92	86.49	2.32
12.92	1.95	97.49	72.98	0.56
4.64	13.28	82.67	76.64	0
5.32	0	100	90.62	0
5.68	22.6	75.34	71.58	2.05
6.1	23.13	76.02	75.07	0.85
3.02	10.38	89.07	85.52	0.55
5.03	20.27	79.26	76.26	0.67
4.41	32.07	66.58	56.25	1.36
7.46	14.05	85.18	83.56	0.76
2.53	17.65	81	80.06	1.35
3.92	27.1	71.94	66.29	0.97
3.99	9.77	88.87	88.28	1.36
3.4	12.3	86.86	85.69	0.84
6.06	23.17	75.49	67.99	1.34
4.8	15.43	83.07	80.26	1.5
5.05	10.76	88.05	83.45	1.19
3.9	10.07	89.76	86.36	0.17

3,0-11,5

Nkr/Nkc
4.615
11.013
2.430
1.654
8.021
3.827
10.258
2.715
8.190
0.838
11.718
4.512
12.409
5.989
4.722
4.864
6.033
12.436
9.008
49.995
6.225
0.000
3.334
3.287
8.581
3.910
2.076
6.063
4.589
2.655
9.096
7.062
3.258
53.507
8.183
8.914

komentář		NK = CD56+CD3-	NK+=CD16-CD56dim	NK++ = CD16-CD56bright
kód pac.	materiál	NK z Ly	NK+ z Ly	NK++ z Ly
	komentář:	NK = CD56+CD3-	NK+=CD16-CD56dim	NK++ = CD16-CD56bright
rameno	kód pac	uNK z Ly	NK+ z Ly	NK++ z Ly

NK+++ = CD16-CD56superbright T= T lymphocyty CD3+CD56- NKT = CD 56+CD3+

NK+++ z Ly	T(CD3+CD56-) z Ly	NKT z Ly
NK+++ = CD16-CD56superbright	T= T lymphocyty CD3+CD56-	NKT = CD 56+CD3+
NK+++ z Ly	T z Ly	NKT z Ly

NKc = cytotox = CD56+CD16+

NKr = regulační =CD56+CD16-

NK++ = CD16-CD56bright

NKc CD56+CD16+	NKr CD56+CD16- z NK	CD56++ z NK
NKc = cytotox = CD56+CD16+	NKr = regulační =CD56+CD16-	NK++ = CD16-CD56bright
NKc z NK	NKr z NK	NK++ z NK

populace nej. Významu

NK = CD56+CD3-

NK+=CD16-CD56dim

CD16+ z NK	Nkr/Nkc	kód pac.	materiál	NK z Ly	NK+ z Ly
populace nej. Významu				NK = CD56+CD3-	NK+=CD16-CD56dim
CD56 - 16+ z NK	Nkr/Nkc	kód pac.	materiál	uNK z Ly	NK+ z Ly

NK++ = CD16-CD56bright NK+++ = CD16-CD56superbright T= T lymfocyty CD3+CD56-

NK++ z Ly	NK+++ z Ly	T(CD3+CD56-) z Ly
NK++ = CD16-CD56bright	NK+++ = CD16-CD56superbright	T= T lymfocyty CD3+CD56-
NK++ z Ly	NK+++ z Ly	T z Ly

NKT = CD 56+CD3+ NKc = cytotox = CD56+CD16+ NKr = regulační =CD56+CD16-

NKT z Ly	NKc CD56+CD16+	NKr CD56+CD16- z NK
NKT = CD 56+CD3+	NKc = cytotox = CD56+CD16+	NKr = regulační =CD56+CD16-
NKT z Ly	NKc z NK	NKr z NK

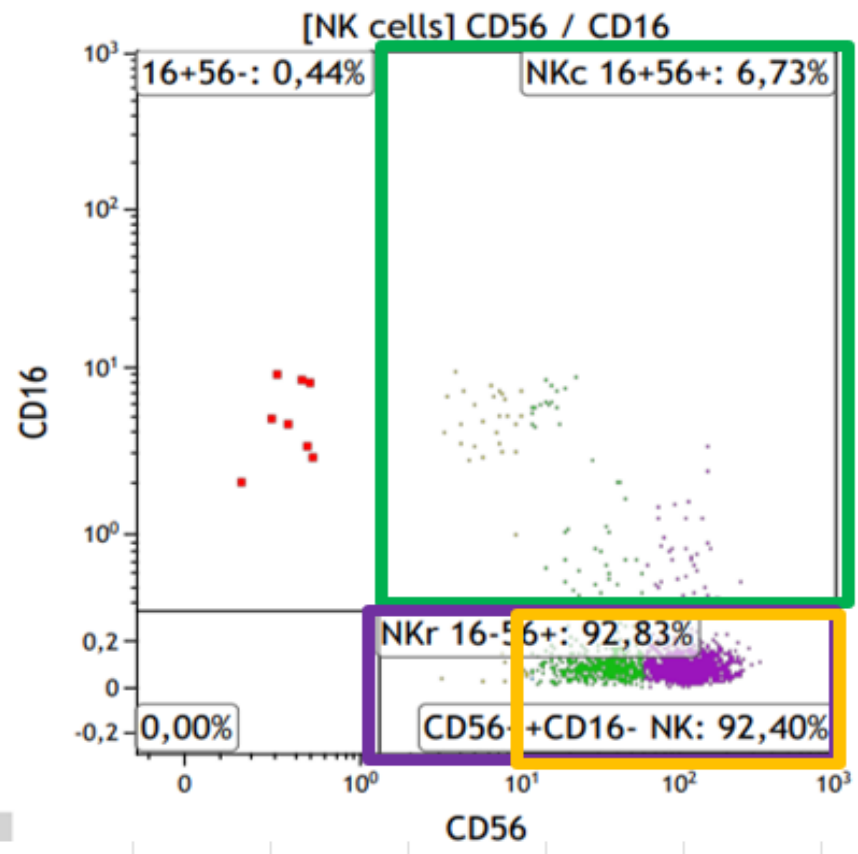
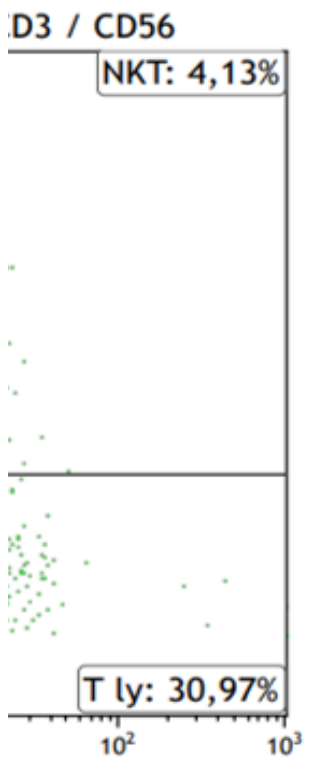
NK++ = CD16-CD56bright **populace nej. Významu**

CD56++ z NK	CD16+ z NK	Nkr/Nkc
NK++ = CD16-CD56bright	populace nej. Významu	
NK++ z NK	CD56 - 16+ z NK	Nkr/Nkc

3/29/2023	NK z Ly	NK++ z Ly	NK+++ z Ly	T(CD3+CD56-) z Ly	NKT z Ly	NKc CD56+CD16+	NKr CD56+CD16- z NK	CD56++ z NK
průměr	38.1	34.0	15.5	53.0	4.9	15.8	82.8	80.3
median	35.9	31.8	12.4	55.0	4.5	14.6	83.8	81.1
95 perc	62.4	58.3	38.3	74.3	9.8	29.3	92.8	90.4
90 perc	59.2	54.3	30.3	71.2	8.1	25.0	90.8	89.2
10 perc	21.1	17.6	5.1	33.5	2.4	7.9	72.6	69.7
5 perc	17.6	14.8	3.7	29.5	1.8	6.3	68.2	65.9
původní normy	15-54	13-51		35,5-73	<6	7,5-22	75-93	57-90
normy	21 -60	18 -55		33-71	<8	7,5-25,0	73-91	70-90

Per. Krev

Zkratka	Popis populace	Referenční rozmez (%)
KNK	NK (CD56+CD3-) z Ly	4,5 - 18
KNK++	NK CD56bright z Ly	0,3 - 1
KNK+	NK CD56 dim z Ly	3,5 – 17,5
K5616	NKc CD56+CD16+ z NK	83 - 96
K56+	NKr CD56+CD16- z NK	0 - 7
K56++	CD56++CD16- z NK	0 - 6
K16	CD56-CD16+ z NK	2,5 – 13,5



kód	RAMENO	materiál	NK z Ly (B:21	NK++ z Ly (B:	NK+++ z Ly	T(CD3+CD56-) z Ly
NK-A-V-001-EG	A	B	19.5	16.81	7.61	74.57
NK-A-V-001-EG	A	K	18.16	0.92		56.06
NK-A-V-002-AB	A	B	63.1	59.37	39.75	28.67
NK-A-V-002-AB	A	K	6	0.91		75.63
NK-A-A-001-NM	A	B	17.6	15.89	9.64	76.24
NK-A-A-001-NM	A	K	16.43	1.09		58.68
NK-A-J-001-PP	A	B	39.16	37.21	19.06	50.99
NK-A-J-001-PP	A	K	9.82	0.71		71.62
NK-A-J-002-MB	A	B	39	35.53	21.07	50.84
NK-A-J-002-MB	A	K	13.12	9.9	0.85	70.42
NK-A-V-003-MB	A	B	18.03	13.68	9.93	70.82
NK-A-V-003-MB	A	K	8.2	0.44		69.12
NK-A-J-003-MR	A	B	39.51	35.66	20.84	49.89
NK-A-J-003-MR	A	K	7.75	0.35		74.71
NK-A-B-002-PŠ	A	B	16.43	14.86	4.53	77.62
NK-A-B-002-PŠ	A	K	4.09	0.88		79.63
NK-x-V-00?-AV		B	23.6	15.52	2.71	55.43
NK-x-V-00?-AV		K	12.39	1.52		71.69
NK-A-O-001-IJ	A	B	30.55	28.4	13	61.11
NK-A-O-001-IJ	A	K	7.05	0.88		67.34
NK-A-J-004-ZO	A	B	42.25	33.88	8.31	47.5
NK-A-J-004-ZO	A	K	11.75	0.79		66.19
NK-A-B-003-AK	A	B	10.6	7.47	1.43	78.46
NK-A-B-003-AK	A	K	9.25	0.33		71.71
NK-A-A-002-MP	A	B	21.01	18.58	7.47	69.2
NK-A-A-002-MP	A	K	10.63	0.95		73.83
NK-A-O-003-AM	A	B	16.54	8.32	3.84	67.88
NK-A-O-003-AM	A	K	10.08	0.56		75.81
NK-A-O-002-BS	A	B	24.64	18.48	9.69	56.55
NK-A-O-002-BS	A	K	15.82	1.23		56.64
NK-A-A-003-KT	A	B	37.14	33.09	18.84	47.95
NK-A-A-003-KT	A	K	19.95	0.75		61.88
NK-A-J-005-ED	A	B	23.52	19.9	10.51	70.49
NK-A-J-005-ED	A	K	9.93	0.48		75.75
NK-A-O-004-VK	A	B	10.43	9.14	2.03	62.76
NK-A-O-004-VK	A	K	5.71	0.35		74.66
NK-B-O-005-BP	B	B	40	35.58	6.44	52.74
NK-B-O-005-BP	B	K	26.46	0.83		53.36
NK-A-LB-002-BD	A	B	28.82	27.19	13.79	59.21
NK-A-LB-002-BD	A	K	8.81	0.45		58.08
NK-A-L-001-IP	A	B	24.9	21.82	11.87	59.95
NK-A-L-001-IP	A	K	7.42	0.43		69.22
NK-A-B-004-VŠ	A	B	38.82	30.58	13.8	55.11
NK-A-B-004-VŠ	A	K	12	0.41		74.56
NK-A-V-005-ŠK	A	B	37.57	34.68	10.24	55.9
NK-A-V-005-ŠK	A	K	8.91	0.38		70.99

NK-A-LB-001-SM	A	B	23.04	18.22	8.14	68.54
NK-A-LB-001-SM	A	K	14.03	0.49		62.91
NK-A-V-004-VP	A	B	42.39	36.1	12.66	50.85
NK-A-V-004-VP	A	K	12.92	0.31		70.88
NK-A-O-006-LK	A	B	28.76	20.66	5.46	62.63
NK-A-O-006-LK	A	K	35.03	1.78		33.8
NK-B-J-006-MN	B	B	14.16	11.73	8.68	35.61
NK-B-J-006-MN	B	K	14.34	0.64		66.89
NK-A-O-007-HB	A	B	16.79	15.67	11.57	77.55
NK-A-O-007-HB	A	K	5.43	0.72		80.59
NK-A-LB-003-OR	A	B	17.38	15.28	5.15	70.54
NK-A-LB-003-OR	A	K	4.85	0.2		71.75
NK-A-J-007-PH	A	B	44.1	39.24	20.5	49.05
NK-A-J-007-PH	A	K	18.15	0.59		68.15
LN	A	k	7.29	0.59		71.25
NK-A-P-01-JF	A	B	18	10.36	3.65	73.88
NK-A-P-01-JF	A	K	8.3	0.61		78.4
NK-A-H-001-VJ	A	B	40.11	33.15	11.47	54.3
NK-A-H-001-VJ	A	K	5.94	0.16		79.79
NK-B-V-006-LS	B	B	18.59	14.58	4.21	72.86
NK-B-V-006-LS	B	K	9.99	0.41		74.6
NK-A-O-008-VV	A	B	28.56	20.36	3.32	64.54
NK-A-O-008-VV	A	K	4.71	0.59		74.38
NK-A-H-002-SŠ	A	B	29.35	26.28	6.49	59.74
NK-A-H-002-SŠ	A	K	8.38	0.56		68.15
NK-A-J-008-IN	A	B	14.32	5.71	1.62	71.03
NK-A-J-008-IN	A	K	14.23	0.43		65.49
NK-A-A-004-KK	A	B	24.45	21.11	7.06	65.54
NK-A-A-004-KK	A	K	8.95	0.68		73.39
NK-A-O-011-JZ	A	B	17.6	10.92	3.05	74.73
NK-A-O-011-JZ	A	K	3.85	0.17		80.62
NK-A-O-009-LG	A	B	26.11	15.11	5.09	64.09
NK-A-O-009-LG	A	K	12.15	0.8		70.45
NK-A-O-010-DŽ	A	B	19.97	4.62	0.66	61.55
NK-A-O-010-DŽ	A	K	9.99	0.39		75.5
NK-A-J-009-LM	A	B	18.67	17.76	12.11	71.93
NK-A-J-009-LM	A	K	7.8	0.41		81.41
Nk-A-A-005-DG	A	B krev	33.54	24.58	11.98	54.37
Nk-A-A-005-DG	A	B nekr	36.9	32.93	16.23	54.34
Nk-A-A-005-DG	A	K	15.98	0.97		62.85
NK-A-V-007-HR	A	B	34.09	31.49	16	56.67
NK-A-V-007-HR	A	K	8.65	0.32		74.48
NK-A-O-012-KH	A	B	35.67	31.49	9	60.08
NK-A-O-012-KH	A	K	8.65	0.33		75.5
NK-A-O-013-ZR	A	B	23.72	18.08	4.98	68.29
NK-A-O-013-ZR	A	K	7.52	0.42		72.55
NK-A-B-005-RO	A	B	30.73	20.14	10.16	62.15
NK-A-B-005-RO	A	K	24.47	0.61		63.55
NK-B-O-014-NM	B	B	30.16	22.53	11.13	56.47
NK-B-O-014-NM	B	K	22.15	0.19		67.12

NK-A-B-006-HP	A	B	22.34	17.36	9	70.77
NK-A-B-006-HP	A	K	10.15	0.77		72.2
NK-B-B-007-TP	B	B	32.02	30.14	7.54	60.22
NK-B-B-007-TP	B	K	9.45	0.7		71.1
NK-A-O-015-RV	A	B	27.98	25.99	19.5	62.37
NK-A-O-015-RV	A	K	7.06	1.51		78.43
NK-A-V-008-JŠ	A	B	21.02	16.05	5.34	71.81
NK-?-A-006-MŠ		B	41.66	37.43	22.95	51.38
NK-?-A-006-MŠ		K	11.68	1		76.5
NK-A-V-009-KČ	A	B	39.88	34.36	7.11	51.18
NK-A-V-009-KČ	A	K	7.58	0.69		72.32
NK-A-O-016-VA	A	B	26.06	21.03	11.66	66.03
NK-A-O-016-VA	A	K	12.75	0.76		73.55
NK-A-O-018-LL	A	B	14.02	12.52	4.4	80.08
NK-A-O-018-LL	A	K	2.63	0.36		77.9
NK-B-O-017-VO	B	B	30.92	26.79	5.32	55.6
NK-B-O-017-VO	B	K	16.72	0.81		64.94
NK-V-B-010-VM	B	B	58.35	55.47	37.07	36.77
NK-V-B-010-VM	B	K	4.5	1.19		78.81
NK-V-B-011-AK	B	B	35.59	28.85	18.98	49.81
NK-V-B-011-AK	B	K	11.36	0.83		74.64
NK-V-B-012-JH	B	B	48.05	43.31	9.39	43.91
NK-V-B-012-JH	B	K	17.2	0.55		65.68
NK-B-J-010-RB	B	B	19.87	11.48	1.81	65.04
NK-B-J-010-RB	B	K	9.52	0.98		59.21
NK-A-J-011-IV	A	B	22.55	20.02	9.21	68.78
NK-A-J-011-IV	A	K	12.11	0.51		70.92
NK-A-P-002-MŠ	A	B	55.08	44.05	5.43	33.2
NK-A-P-002-MŠ	A	K	12.44	0.61		62.88
NK-B-V-013-DH	B	B	48.4	46.3	30.32	43.49
NK-B-V-013-DH	B	K	12.47	0.9		75.09
SS		B	27.2	24.56	5.12	50.64
SS		K	6.22	0.7		67.84
NK-A-O-019-SM	A	B	40.02	37.78	23.73	51.41
NK-A-O-019-SM	A	K	15.31	0.66		66.62
NK-A-P-003-PV	A	B	57.33	51.73	34.8	35
NK-A-P-003-PV	A	K	13.91	0.65		71.37
NK-A-J-012-PP	A	B	56.48	54.31	41.91	36.7
NK-A-J-012-PP	A	K	24.37	0.58		55.48
NK-A-J-013-LK	A	B	47.15	44.51	25.98	48.27
NK-A-J-013-LK	A	K	12.86	0.52		74.5
NK-A-LB-004-DK	A	B	32.85	28	15.35	59.37
NK-A-LB-004-DK	A	K	13.12	0.19		71.93
NK-B-J-014-BR	B	B	31.95	27.99	15.78	57.42
NK-B-J-014-BR	B	K	4.25	0.26		81.03
NK-B-O-020-TL	B	B	41.56	38.58	18.98	40.04
NK-B-O-020-TL	B	K	29.43	1.12		52.6
NK-A-O-004-VK 2.cA		B	13.07	9.27	3.75	69.12
NK-A-O-004-VK 2.cA		K	4.57	0.14		73.51
HK		K	10.55	1		76.67

HK		B	40.05	31.63	9.95	46.43
HK		B	32.83	28.18	11.57	57.21
NK-A-J-015-MT	A	B	9.26	6.46	0.85	73.04
NK-A-J-015-MT	A	K	6.63	1.62		74.43
NK-A-B-008-PM	A	B	23.9	22.55	1.05	59.89
NK-A-B-008-PM	A	K	18.77	1.17		66.07
NK-A-O-021-LŠ	A	B	41.08	37.14	14.57	53.14
NK-A-O-021-LŠ	A	K	17.47	1.47		6.65
NK-A-LB-006-ZS	A	B	50.15	47.79	11.34	42.33
NK-A-LB-006-ZS	A	K	12.64	0.76		65.42
NK-B-LB-008-BM	B	B	33.74	29.75	15.67	52.7
NK-B-LB-008-BM	B	K	9.72	0.97		62.23
NK-A-LB-009-JB	A	B	21.65	6.01	2.33	69.31
NK-A-LB-009-JB	A	K	20.62	1.09		65.58
NK-A-P-004-AČ	A	B	35.1	33.04	8.35	56.16
NK-A-P-004-AČ	A	K	16.18	0.51		64.89
NK-A-J-016-RH	A	B	18.2	15.17	3.15	73.71
NK-A-J-016-RH	A	K	3.84	0.29		82.33
NK-A-O-023-DL	A	B	27.47	24.98	8.67	63.66
NK-A-O-023-DL	A	K	13.92	1.45		69.91
NK-A-O-022-KV	A	B	24.46	22.92	5.35	62.3
NK-A-O-022-KV	A	K	6.93	0.52		74.77
NK-B-B-009-LZ	B	B	39.37	33.44	8.27	47.91
NK-B-B-009-LZ	B	K	17.99	0.22		67.04
NK-A-LB-009-KZ	A	B	62.04	60.97	54.79	32.62
NK-A-LB-009-KZ	A	K	10.69	0.4		71.04
NK-B-J-017-KM	B	B	44.15	40.08	27.62	46.94
NK-B-J-017-KM	B	K	17.67	1.43		69.63
NK-A-P-005-LC	A	B	28.43	14.19	7.75	61.74
NK-A-P-005-LC	A	K	6.68	0.66		75.94
NK-A-O-024-DB	A	B	17.3	16.21	6.71	72.66
NK-A-O-024-DB	A	K	3.84	0.87		70.3
NK-B-B-010-MP	B	B	16.9	15.16	5.16	76.28
NK-B-B-010-MP	B	K	16.06	0.98		65.23
NK-A-O-025-EZ	A	B	33.24	29.14	15.4	59.38
NK-A-O-025-EZ	A	K	13.15	0.85		73.33
NK-A-O-026-ZV	A	B	17	12.02	3.02	71.28
NK-A-O-026-ZV	A	K	18.12	0.54		70.36
NK-A-O-028-EN	A	B	33.8	29.53	18.01	52.31
NK-A-O-028-EN	A	K	10.13	0.46		72.45
NK-A-O-029-LD	A	B	39.64	34.75	9.35	54.96
NK-A-O-029-LD	A	K	8.38	0.78		71.81
NK-B-O-027-ZR	B	B	29.84	20.88	3.56	55.6
NK-B-O-027-ZR	B	K	9.22	1.11		70.31
NK-A-O-030-VL	A	B	18.56	17.05	11.1	73.65
NK-A-O-030-VL	A	K	9.1	0.3		59.01
NK-A-O-031-MP	A	B	77.04	74.88	70.91	14.66
NK-A-O-031-MP	A	K	12.2	0.62		71.46
NK-A-B-011-LB	A	B	52.01	48.11	16.31	30.37
NK-A-B-011-LB	A	K	16.38	2.52		60.6

NK-LB-010-KK		B	26.31	22.45	6.34	65.93
NK-LB-010-KK		K	7.65	1.19		72.43
NK-B-O-032-ON	B	B	26.68	21.86	18.14	66.38
NK-B-O-032-ON	B	K	13.49	0.57		74.12
NK-A-P-006-PM	A	B	47.72	40.21	22.52	34.58
NK-A-P-006-PM	A	K	13.79	0.81		64.68
NK-A-B-012-LP	A	B	56.64	51.95	12.81	26.77
NK-A-B-012-LP	A	K	21.91	3.67		53.86
NK-A-O-033-LŘ	A	B	50.66	48.58	21.8	41.69
NK-A-O-033-LŘ	A	K	11.56	0.22		49.29
NK-A-B-013-ZJ	A	B	14.56	12.45	4.4	51.62
NK-A-B-013-ZJ	A	K	7.05	0.43		77.48
NK-A-B-014-MH	A	B	27.4	23.76	11.8	56.08
NK-A-B-014-MH	A	K	5.61	0.69		77.94
NK-B-O-035-LD	B	B	29.03	19.79	3.43	51.51
NK-B-O-035-LD	B	K	8.07	0.65		72.26
NK-A-O-036-DK	A	B	15.87	11.92	3.2	76.58
NK-A-O-036-DK	A	K	3.79	0.4		83.53
NK-B-O-034-MS	B	B	36.54	30.84	11.66	57.43
NK-B-O-034-MS	B	K	15.43	0.82		72.26
NK-A-o-037-AM	A	B				
NK-A-o-037-AM	A	K	16.76	0.92		72.5
NK-A-B-015-LV	A	B	69.49	66.2	48.53	25.24
NK-A-B-015-LV	A	K	14.26	0.71		60.18
NK-A-B-017-LT	A	B	38.13	27.76	13.13	52.07
NK-A-B-017-LT	A	K	11.99	0.57		74
NK-A-B-016-ZJ	A	B	18.2	15.92	7.45	53.35
NK-A-B-016-ZJ	A	K	12.89	0.27		65.83
NK-B-O-039-ZP	B	B	29.24	27.74	15.77	62.15
NK-B-O-039-ZP	B	K	3.29	0.22		80.04
NK-A-B-020-AN	A	B	33.42	30.51	19.82	57.94
NK-A-B-020-AN	A	K	13.338	1.62		58.07
NK-B-B-019-LK	B	B	45.31	33.49	3.53	40.09
NK-B-B-019-LK	B	K	17.97	1.18		63.53
NK-A-B-018-DZ	A	B	67.75	63.97	41.15	28.3
NK-A-B-018-DZ	A	K	6.24	0.95		82.37
NK-B-B-021-MT	B	B	31.84	29.82	3.22	60.27
NK-B-B-021-MT	B	K	6.66	0.49		81.76
NK-B-B-022-ZK	B	B	44.01	43.05	20.44	50.91
NK-B-B-022-ZK	B	K	11.82	1.37		72.75
NK-A-O-040-MH	A	B	82.45	80.5	59.19	14.98
NK-A-O-040-MH	A	K	14.06	1.64		68.94
NK-B-B-024-MM	B	B	34.3	29.71	16.18	55.68
NK-B-B-024-MM	B	K	14.26	0.71		73.15
NK-A-B-023-HR	A	B	79.01	75.79	30.43	12.96
NK-A-B-023-HR	A	K	6.23	0.27		82.31
NK-A-B-025-KH	A	B	28.42	19.98	11.32	64.11
NK-A-B-025-KH	A	K	7.08	0.61		70.55
NK-B-O-041-LL	B	B	41.53	31.25	22.68	50.3
NK-B-O-041-LL	B	K	4.45	0.32		77.41

NK-A-B-026-DD	A	B	46.42	41.56	26.98	40.76
NK-A-B-026-DD	A	K	15.98	0.78		68.48
NK-A-O-042-MZ	A	B	68.76	67.27	46.68	24.83
NK-A-O-042-MZ	A	K	17.02	0.29		68.2
NK-B-O-043-MŠ	B	B	27.39	24.89	14.48	62.5
NK-B-O-043-MŠ	B	K	7.86	0.38		74.83
NK-A-B-027-ŠK	A	B	51.57	43.31	19.25	40.01
NK-A-B-027-ŠK	A	K	11.3	0.43		75.28
NK-A-B-028-RB	A	B	33.01	26.92	15.42	57.19
NK-A-B-028-RB	A	K	8.99	1.2		73.54
NK-B-B-029-KŘ	B	B	39.05	35.27	19.13	55.53
NK-B-B-029-KŘ	B	K	13.92	0.83		76.34
NK-A-B-030-PM	A	B	14.08	12.41	3.12	78.77
NK-A-B-030-PM	A	K	13.68	10.68		42.28
NK-B-OI-044-ZJ	B	B	9.84	7.42	3.48	81.27
NK-B-OI-044-ZJ	B	K	4.74	0.42		82.43
NK-A-B-031-TW	A	B	17.74	15.02	7.04	74.87
NK-A-B-031-TW	A	K	13.46	1.41		70.02
NK-A-O-045-VŠ	A	B	37.6	33.84	17.63	56.49
NK-A-O-045-VŠ	A	K	5.64	1.2		78.15
NK-B-B-032-AS	B	B	38.13	36.46	21.7	55.37
NK-B-B-032-AS	B	K	11.48	1.23		63.84
NK-A-B-034-HN	A	B	17.97	15.2	6.44	73.64
NK-A-B-034-HN	A	K	5.07	0.36		69.13
NK-A-B-033-KH	A	B	36.83	29.84	18.28	54.67
NK-A-B-033-KH	A	K	21.39	0.66		57.65
NK-A-B-035-JV	A	B	36.64	28.77	12.08	44.73
NK-A-B-035-JV	A	K	12.54	1.62		70.03
NK-A-B-036-NH	A	B	14.46	13.38	9.26	67.03
NK-A-B-036-NH	A	K	4.26	0.79		73.16
NK-B-B-037-JP	B	B	50.13	47.25	19.69	53.29
NK-B-B-037-JP	B	K	21.92	1.02		62.97
NK-A-B-038-MJ	A	B	44.46	42.77	26.7	44.87
NK-A-B-038-MJ	A	K	19.49	1.17		57.17
NK-B-B-039-KM	B	B	37.02	29.85	4.82	53.2
NK-B-B-039-KM	B	K	15.17	0.47		66.25
NK-A-B-040-NB	A	B	57.44	53.87	25.81	30.64
NK-A-B-040-NB	A	K	7.78	0.68		67.02
NK-A-B-041-JK	A	B	38.96	28.19	3.23	45.42
NK-A-B-041-JK	A	K	8.38	0.45		62.42
NK-C-V-014-MP	C	B	58.71	55.32	13.98	34.04
NK-C-V-014-MP	C	K	5.94	0.38		75.45
NK-C-B-043-VT	C	B	7	6.08	1.78	86.45
NK-C-B-043-VT	C	K	5.12	0.16		79.67
NK-C-B-042-DK	C	B	44.95	40.67	14.62	39.06
NK-C-B-042-DK	C	K	14.01	0.18		73.85
NK-C-V-015-LR	C	B	21.67	16.65	1.72	69.08
NK-C-V-015-LR	C	K	9.92	0.5		78.05
NK-C-L-002-KJ	C	B	46.78	44.69	22.26	43.22
NK-C-L-002-KJ	C	K	2.55	0.69		70.17

NK-B-B-046-ZP	B	B	43.07	40.26	14.97	48.17
NK-B-B-046-ZP	B	K	19.76	0.98		66.4
NK-B-B-045-JH	B	B	26.43	24.59	8.94	68.75
NK-B-B-047-MT	B	B	17.53	16.29	3.48	75.68
NK-B-B-047-MT	B	K	6.98	0.46		66.14

NKT z Ly (B: < NKc CD56+CD16+ NKr CD56+CD16 CD56++ z NK (B: CD16+ z NK (B: Nkr/Nkc (3-11,

3.39	18.24	79.44	75.05	2.03	4.355263158
11.36	88.34	4.3	3.39	7.21	0.048675572
4.29	10.57	88.28	86.26	1.16	8.351939451
1.62	80.73	3.94	4.53	15.33	0.048804658
4.33	13.54	85.2	81.98	0.98	6.292466765
4.26	76.7	2.77	2.42	21.06	0.036114733
5.91	8.85	90	87.5	1.09	10.16949153
5.34	88.18	4.24	3.59	7.58	0.048083466
7.67	11.01	87.67	85.85	1.19	7.962761126
6.55	89.49	5.28	4.91	5.23	0.059001006
9.02	27.71	71.69	71.08	0.6	2.587152652
16	90.25	3.79	3.25	5.96	0.04199446
6.11	8.93	89.96	87.25	1.05	10.07390817
8.23	87.45	6.32	4.68	6.23	0.072269868
2.32	14.23	84.11	81.45	1.5	5.910751933
3.94	76.63	17.07	15.94	6.3	0.222758711
2.7	45.05	53.31	49.9	1.3	1.183351831
2.19	88.75	6.25	55.8	4.99	0.070422535
5.59	24.5	74.53	73	0.9	3.042040816
11.84	86.63	6.81	5.82	5.86	0.078610181
5.79	20.58	78.81	72.96	0.49	3.829446064
10.21	84.81	8.52	7.17	6.67	0.100459851
6.87	33.05	64.62	60.81	2.22	1.955219365
3.77	90.85	2.8	2.2	6.34	0.030820033
6.4	16.72	81.44	78.64	1.53	4.870813397
2.47	86.21	5.78	5.12	8.01	0.067045586
11.53	36.24	58.15	50.84	4.21	1.604580574
4.05	91.29	2.95	2.62	5.76	0.032314602
14.8	27.07	71.18	69.08	1.75	2.629479128
20.69	88.88	5.76	5.71	5.37	0.064806481
9.21	16.55	82.72	80.44	0.66	4.998187311
15.63	90.93	3.54	3.2	5.48	0.038931046
3.97	19.58	79.28	76.06	0.97	4.049029622
5	89.97	5.23	3.72	4.79	0.058130488
26.03	55.69	42.75	40.29	1.36	0.767642306
5.27	80.54	5.67	4.6	13.71	0.070399801
4.83	17.67	81.54	78.78	0.79	4.614601019
8.79	93.97	1.74	1.37	4.19	0.018516548
10.97	9.25	90.32	88.4	0.42	9.764324324
12.85	85.87	6.2	5.48	7.92	0.072202166
8.75	19.65	80.65	80.35	0	4.1043257
13.46	83.14	7.33	5.17	9.53	0.088164542
3.81	28.77	70.12	66.86	1.1	2.437261036
2.35	88.28	3.56	2.8	8.16	0.040326235
4.85	13.74	85.52	83.93	0.68	6.224163028
4.99	89.34	4.69	3.42	5.96	0.052496082

6	22.69	74.87	71.71	2.28	3.299691494
10.18	87.57	3.14	2.35	9.29	0.035857029
5.65	20.9	78.48	76.46	0.62	3.755023923
8.24	86.49	3.29	2.55	10.21	0.03803908
7.33	32.07	66.62	63.94	1.24	2.077330839
21.23	88.75	3.21	2.6	8.04	0.036169014
3.46	8.16	89.87	83.47	1.52	11.01348039
5.15	91.43	3.15	2.27	5.42	0.034452587
2.73	9.28	89.14	87.42	1.58	9.605603448
5.46	83.4	4.98	4.5	11.63	0.05971223
7.18	17.97	80	75.08	1.58	4.451864218
6.17	90.03	5.85	3.42	4.12	0.064978341
4.46	16.89	81.99	79.61	1.04	4.854351687
3.46	95.35	2.8	1.75	1.85	0.029365496
13.05	73.19	3.97	3.35	22.84	0.054242383
4.34	52.14	44.71	43.14	3.14	0.857499041
2.52	93.64	2.19	2.09	4.28	0.023387441
4.23	9.45	89.49	81.22	1.06	9.46984127
2.86	80.14	3.43	2.37	16.43	0.0428001
4.73	28.81	70	67.06	1.08	2.429711906
6.15	91.42	3.34	2.94	5.24	0.036534675
2.93	39.11	59.55	56.16	1.27	1.522628484
1.86	69.52	9.2	6.3	21.29	0.132336018
8.74	14.42	84.87	82.43	0.6	5.885575589
3.89	91.96	4.26	3.53	3.77	0.046324489
11.05	59.58	35.55	33.47	4.67	0.596676737
8.51	86.25	3.75	2.79	10	0.043478261
4.4	24.8	73.47	70.49	1.73	2.9625
2.84	84.96	5.87	4.12	9.18	0.069091337
6.1	43.33	54.1	52.93	2.58	1.248557581
3.09	71.36	2.15	0.9	26.48	0.030128924
4	42.07	53.4	49.54	4.37	1.26931305
4.23	82.62	5.99	4.89	11.39	0.072500605
14.85	78.57	15.87	15.08	5.56	0.201985491
4.71	85.29	4.21	3.38	10.5	0.049361004
8.6	36.53	62.7	60.91	0.57	1.716397482
3.19	93.34	4.52	2.78	2.14	0.048425112
6.65	23.51	71.72	67.78	4.77	3.050616759
5.38	9.4	89.15	86.8	1.45	9.484042553
6.07	85.85	4.45	3.25	9.69	0.051834595
7.39	19.25	79.33	77.15	1.42	4.121038961
2.82	90.96	3.89	2.37	5.15	0.042766051
3.09	5.99	93.53	82.09	0.4	15.61435726
2.56	86.89	3.21	1.94	9.9	0.036943262
5.54	4.63	94.12	76.76	0.57	20.32829374
1.17	82.73	5.34	3.24	11.93	0.064547323
3.3	46.85	50.2	49.13	2.84	1.071504803
2.78	91.98	3.03	2.21	5	0.032941944
11.13	36.76	60.79	59.57	2.14	1.653699674
2.86	95.63	1.29	0.7	3.08	0.013489491

2.47	25.94	71.04	69.41	3.01	2.738627602
2.06	86.18	4.84	3.28	8.98	0.056161522
5.95	10.99	88.15	86.32	0.8	8.020928116
8.18	86.5	6.28	4.66	7.22	0.072601156
8.02	7.54	91.04	90.48	1.27	12.07427056
2.7	84.33	8.86	7.46	6.8	0.105063441
4.12	14.69	80.85	77.67	4.23	5.503744044
4.03	11.2	85.3	83.9	3.12	7.616071429
3.98	92.01	4.9	3.57	3.09	0.053255081
5.99	22	74.5	72.76	3.54	3.386363636
5.89	78.03	5.08	4.08	16.89	0.065103165
4.16	18.6	77.7	76.12	3.59	4.177419355
7.67	89.33	3.53	2.7	7.14	0.0395164
2.55	22.63	74.02	72.85	2.96	3.270879364
3.24	83.41	6.71	3.53	9.88	0.08044599
10.64	20.23	77.42	75.95	2.35	3.826989619
2.99	88.91	4.11	2.83	6.98	0.046226521
2.32	8.79	90.17	89.53	0.99	10.25824801
7.67	80.72	7.39	6.38	11.88	0.091551041
5.24	26.08	70.81	69.85	2.99	2.715107362
3.67	85.5	3.97	3.11	10.53	0.046432749
3.49	10.7	87.63	85.74	1.5	8.189719626
3.88	86.27	4.8	2.47	8.94	0.055639272
13.28	52.11	43.68	42.11	4.21	0.838226828
15.19	82.5	9.12	6.83	8.39	0.110545455
4.26	16.37	81.71	80.37	1.74	4.99144777
5.1	90.29	4.78	3.43	4.93	0.052940525
2.74	18.83	78.77	77	2.39	4.183218269
5.89	80.91	6.62	3.38	12.05	0.081819305
2.81	7.72	90.46	89.59	1.83	11.71761658
3.43	91.61	3.98	2.7	4.42	0.043445039
20.56	17.42	80.74	78.41	1.84	4.634902411
14.44	76.52	11.04	8.81	12.44	0.144276006
3.46	8.23	88.6	87.36	2.74	10.7654921
2.76	90.58	2.49	1.39	6.93	0.027489512
2.32	10.42	87.1	86	2.47	8.358925144
1.78	90.15	3.56	3.03	6.3	0.039489739
3.8	6.16	92.71	91.86	1.1	15.05032468
4.32	87.77	2.18	1.64	10.05	0.024837644
1.88	8.42	90.81	90.17	0.77	10.78503563
4.78	89.41	3.71	3	6.85	0.04149424
6.14	26.56	72	70.12	1.18	2.710843373
2.63	89.12	1.7	0.66	9.16	0.019075404
7.3	17.52	79.05	78.23	2.77	4.511986301
2.79	82.26	7.09	4.42	10.65	0.086190129
2.92	6.51	80.78	77.94	12.71	12.40860215
4.86	88.49	3.64	2.16	7.77	0.041134591
8.74	32.48	59.36	57.18	8.11	1.827586207
3.84	85.79	3.88	2.06	10.32	0.045226716
1.79	76.43	8.53	7.34	15.04	0.111605391

2.55	25	65.7	65.12	8.72	2.628
1.71	13.41	83.52	80.73	3.07	6.228187919
7.54	37.04	54.5	49.21	8.47	1.471382289
1.59	78.03	16.21	14.03	5.77	0.207740613
4.51	24.97	74.58	73	0.39	2.986784141
5.64	92.18	3.21	2.16	4.6	0.034823172
3.26	15.43	83.51	81.58	1.06	5.412184057
3.29	87.81	4.78	4.02	7.41	0.054435713
4	14.2	85.44	85.07	0.36	6.016901408
10.55	92.68	2.68	1.71	4.64	0.028916703
9.82	13.98	83.73	82.13	1.91	5.989270386
5.14	80.34	5.03	3.62	14.63	0.062608912
4.44	67.81	25.48	23.34	6.71	0.375755788
2.15	89.14	4.22	3.44	6.64	0.047341261
8.17	17.69	81.98	81	0.33	4.634256642
4.29	91.95	3.31	2.32	4.74	0.035997825
4.14	26.19	69.07	66.11	4.47	2.637266132
5.43	79.38	6.52	4.41	14.1	0.082136558
4.07	15.2	82.15	81.77	2.22	5.404605263
3.18	88.34	3.57	2.54	8.09	0.040412044
10.5	8.07	91.66	88.33	0.11	11.35811648
8.08	87.51	3.87	2.81	8.62	0.044223517
6.17	17.11	80.8	78.51	2.09	4.72238457
4.91	88.89	1.48	0.72	9.62	0.016649792
2.51	27	71.14	70.77	1.85	2.634814815
3.2	88.72	2.04	1.49	9.24	0.022993688
4.56	16.53	80.4	79.25	3.07	4.863883848
4.72	92.45	4.15	3.5	3.4	0.044889129
6.42	18.95	75.61	77.61	3.22	3.989973615
6.18	75.32	6.44	4.6	20.03	0.085501859
3.66	10.23	84.5	80.85	5.27	8.26001955
13.14	78.37	7.06	4.01	14.57	0.090085492
4.95	13.73	82.83	82.07	3.44	6.032774945
5.17	87.1	5.56	3.55	7.34	0.063834673
3.29	15.83	81.32	79.41	2.85	5.137081491
4.71	85.52	4.79	3.28	9.69	0.05601029
5.19	33.28	59.8	57.18	6.91	1.796875
2.3	88.84	3.51	2.34	7.64	0.03950923
2.82	17.28	77.97	73.11	4.75	4.512152778
4.89	81.75	4.2	2.75	14.06	0.051376147
2.47	12.14	86.83	82.67	1.02	7.152388797
2.48	80.95	7.93	5.22	11.13	0.097961705
6.82	7.39	91.9	74.3	0.7	12.43572395
6.35	84.32	7.97	5.35	7.71	0.094520873
5.81	10.18	88.54	87.45	1.28	8.697445972
9.22	84.66	8.24	2.83	6.5	0.097330498
2.71	2.89	96.82	96.04	0.3	33.5017301
2.98	93.08	4.93	4.48	1.92	0.052965191
5.91	18.63	81.26	79.46	0.11	4.361782072
8.57	80.15	12.71	8.3	7.07	0.158577667

3.96	20.85	77.97	75.62	1.18	3.739568345
3.27	66.28	9.83	7.27	23.89	0.148310199
2.92	9.76	87.92	86.49	2.32	9.008196721
2.92	87.87	4.13	2.97	8	0.047001252
5.9	17.32	81.01	72.07	1.68	4.677251732
8.08	88.13	7.02	5.29	4.86	0.079655055
1.78	8.89	88.95	86.82	2.17	10.0056243
1.94	81.11	13.77	10.33	5.12	0.169769449
4.84	9.28	90.1	86.78	0.63	9.709051724
26.81	87.1	2.19	0.73	10.71	0.025143513
28.92	41.48	57.6	53.13	0.85	1.388621022
0.94	53.14	6.97	3.63	9.89	0.131162966
3.93	19.62	78.66	74.18	1.72	4.009174312
5.45	68.64	10.84	5.88	20.52	0.157925408
12.92	1.95	97.49	72.98	0.56	49.99487179
8.28	83.6	6.73	3.83	9.67	0.080502392
2.74	21.83	75.25	66.78	2.87	3.447091159
3.94	79.37	7.62	5.66	13.01	0.096006048
4.64	13.28	82.67	76.64	0	6.225150602
4.02	91.14	5.03	3.88	3.83	0.055189818
2.22	89.75	6.53	4.34	3.53	0.07275766
1.19	5.7	93.8	92.67	0.5	16.45614035
2.24	80.36	6.05	3.88	13.46	0.075286212
1.61	31.75	66.77	63.8	1.48	0.023197492
3.58	82.22	4.81	2.74	13.07	4.770072993
27.44	41.89	57.4	55.26	0.71	0.012848353
1.52	90.05	4.72	1.3	5.23	4.023076923
5.32	0	100	90.62	0	0
7.19	76.87	9.26	4.61	13.87	3.00867679
4.64	9.58	89.31	86.47	1.11	9.322546973
15.99	82.3	5.76	4.49	11.94	0.069987849
5.68	22.6	75.34	71.58	2.05	3.333628319
6.35	89.94	3.78	2.17	6.28	0.042028019
2.78	6.34	93.11	92.38	0.55	14.68611987
5.18	80.08	10.56	8.15	9.36	0.131868132
6.1	23.13	76.02	75.07	0.85	3.286640726
4.33	87.57	7.43	4.95	5	0.084846409
3.02	10.38	89.07	85.52	0.55	8.580924855
4.72	86.35	8.54	6.73	5.1	0.098899826
1.88	90.11	89.74	9.71	0.18	0.995893907
6.89	84.57	10.03	6.16	5.4	0.118599976
5.03	20.27	79.26	76.26	0.67	3.910212136
3.87	90.78	2.67	1.7	6.55	0.029411765
1.84	11.64	88.36	87.4	0	7.591065292
0.94	89.33	5.01	3.18	5.66	0.056084182
2.35	24.76	69.93	63.31	5.31	2.824313409
0.63	81.38	5.08	3.49	13.54	0.0624232
4.41	32.07	66.58	56.25	1.36	2.076083567
1.28	77.99	6	4.76	16.02	0.07693294

3.28	10.95	85.95	83.89	3.11	7.849315068
4.66	87.76	6.89	5.53	5.34	0.078509572
4.38	0.07	99.73	96.7	0.13	1424.714286
2.73	95.08	3.92	1.82	1	0.041228439
7.46	14.05	85.18	83.56	0.76	6.062633452
3.5	87.55	7.37	5.13	5.08	0.084180468
4.99	9.61	89.93	87.25	0.46	9.357960458
4.24	86.45	5.41	3.05	7.91	0.062579526
3.63	23.93	74.42	72.31	1.65	3.109903886
5.57	77.18	11.05	8.94	11.68	0.143171806
2.53	17.65	81	80.06	1.35	4.589235127
2.94	89.24	7.21	4.2	3.55	0.080793366
5.88	38.55	60.22	59.14	1.24	1.562127108
39.57	80.03	18.28	4.43	1.69	0.228414345
3.92	27.1	71.94	66.29	0.97	2.654612546
5.6	86.41	7.12	4.75	6.47	0.082397871
4.73	20.32	79.08	77.48	0.61	3.891732283
4.69	84.46	3.74	1.55	11.26	0.044281317
3.04	11.93	87.09	85.34	0.99	7.300083822
0.41	75.78	13.51	10.84	10.7	0.178279229
3.99	9.77	88.87	88.28	1.36	9.096212897
9.81	82.91	5.62	4.21	11.47	0.067784344
6.45	15.65	83.49	79.85	0.86	5.334824281
15.08	83.83	9.75	5.6	6.42	0.116306811
5.3	24.29	72.96	71.66	2.75	3.003705228
4.32	85.31	4.14	3.03	10.55	0.048528895
11.4	14.33	84.65	80.78	1.01	5.907187718
4.1	81.88	10.54	7.04	7.54	0.128724963
3.61	9.84	89.14	86.54	1.02	9.058943089
10.79	71.21	14.68	7.54	13.87	0.206150822
3.4	12.3	86.86	85.69	0.84	7.061788618
2.14	90.16	4.01	3.14	5.65	0.044476486
7.76	7.39	91.92	91.49	0.69	12.43843031
12.56	87.07	7.14	3.23	5.61	0.082002986
6.06	23.17	75.49	67.99	1.34	3.258092361
2.8	87.78	4.5	2.31	7.45	0.051264525
7.58	9.07	89.91	86.51	0.74	9.912899669
10.28	79.2	6.47	4.24	14.33	0.081691919
9.43	28.57	68.72	64.29	2.71	2.405320266
14.63	73.44	3.93	3.05	12.63	0.053513072
5.84	6.68	93.12	88.92	0.2	13.94011976
8.02	84.81	7.51	3.12	7.68	0.088550878
5.41	17.1	80.09	78.34	2.81	4.683625731
6.69	82.93	3.93	2.55	13.14	0.047389365
7.53	11.35	87.75	86.8	0.9	7.731277533
1.49	89.17	3.83	1.38	7	0.042951665
7.44	34.65	63.38	60.76	1.97	1.829148629
3.97	83.68	6.63	3.44	9.69	0.079230402
5.84	4.82	94.45	92.99	0.73	19.59543568
5.33	55.8	15.7	11.22	28.46	0.281362007

4.8	15.43	83.07	80.26	1.5	53.50666667
1.88	87.46	3.91	2.32	8.63	0.044706151
3.9	10.07	89.76	86.36	0.17	8.913604767
5.05	10.76	88.05	83.45	1.19	8.183085502
11.07	72.55	7.16	4.84	20.29	0.098690558

poznámky

Progesteron (nmol/l)

p-ok

p-ok

přeanalyzováno

dostatek materiálu, analyzováno 2x, atypická populace NKT (CD56⁺⁺, CD3⁺)

krvavá tkáň

0.83

NAVIOS i NAVIOS EX
NAVIOS i NAVIOS EX

51,8mg , krev, foto

0.84

foto

foto

foto

foto

foto

foto

foto, mírně krvavé

foto, bez kuliček

foto

foto

foto

foto

foto

foto

foto, KOMPL 19697

foto

NAVIOS, krev

foto

foto
foto, stopy krve
spíše jen hlen než tkáň, výrazná příměs krve, nevážitelné

PBS, foto

foto, krev

foto

foto

foto, krvavá tkáň

foto

foto

foto

foto

foto

foto

foto

foto

foto, krev

foto

foto

foto

foto, krev

foto, nová CD16

foto

foto

jen zakalené médium

krev

krvavé

krev, divná CD16

krev, nelze vyhodnotit

CD16? (znovu inkubace 15 min s CD16)

krev

analyzováno 2x, žádné CD16+

hodnotila ZK
hodnotila ZK