
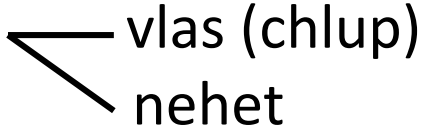
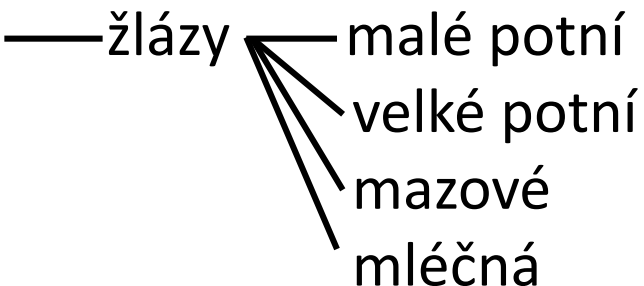




# KŮŽE A KOŽNÍ ADNEXA

- Kůže 
  - tenký typ
  - tlustý typ
  
- Rohovějící adnexa 
  - vlas (chlup)
  - nehet
  
- Nerohovovějící adnexa 
  - žlázy
    - malé potní
    - velké potní
    - mazové
    - mléčná

**Kůže (integumentum)**

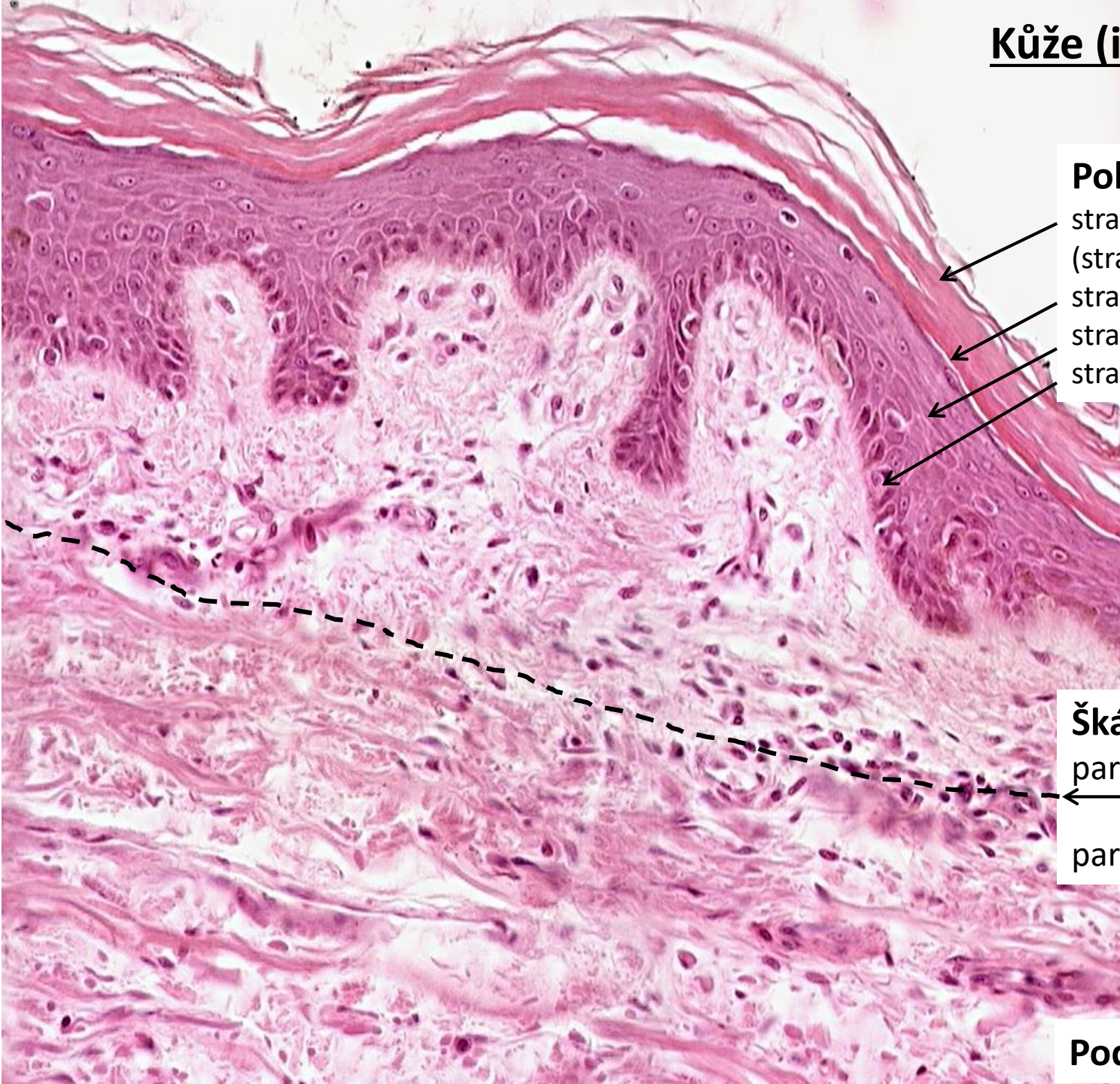
**Pokožka (epidermis)**

- stratum corneum proprium (stratum lucidum)
- stratum granulosum
- stratum spinosum
- stratum basale

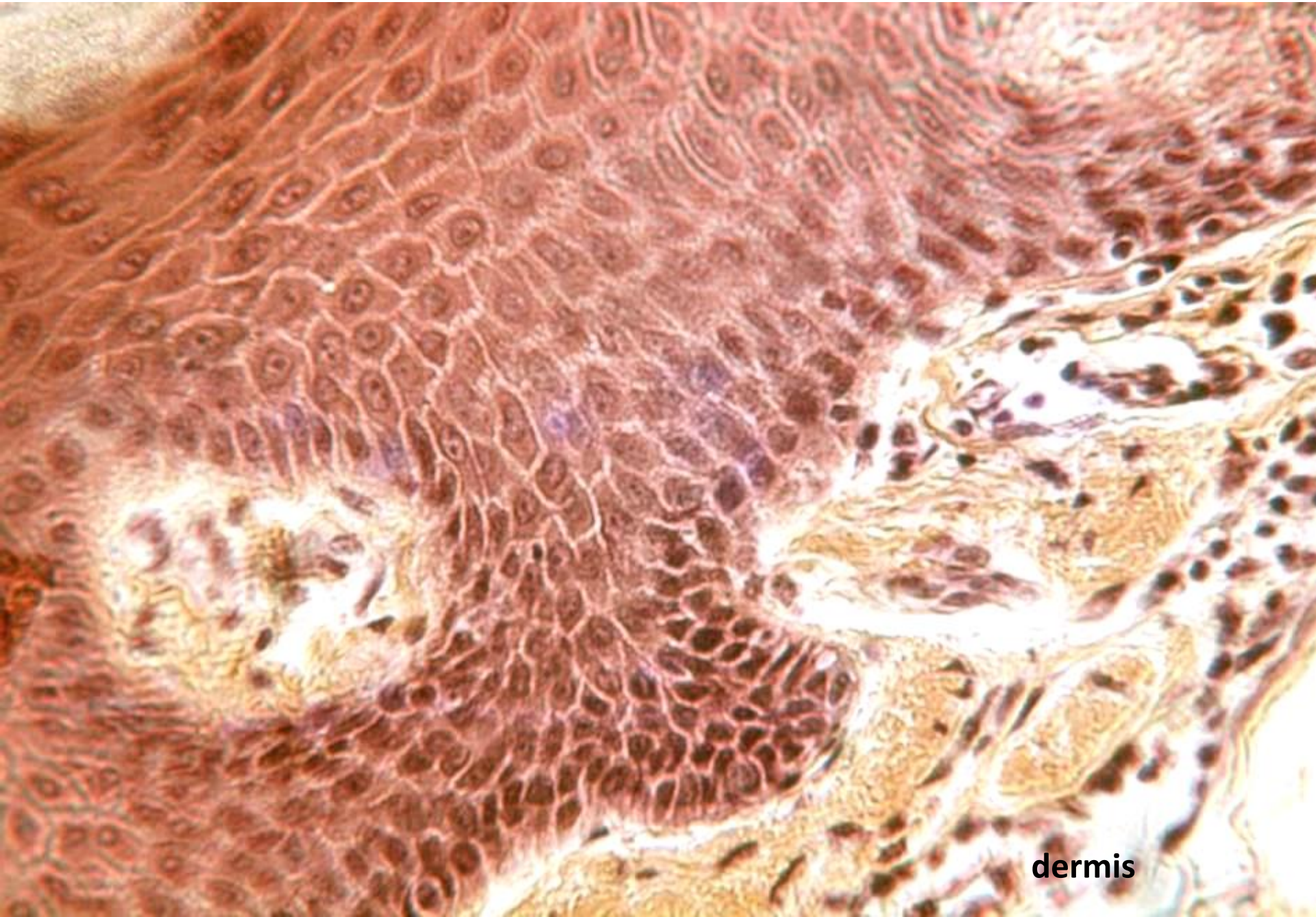
**Škára (dermis, corium)**

- pars papillaris
- pars reticularis

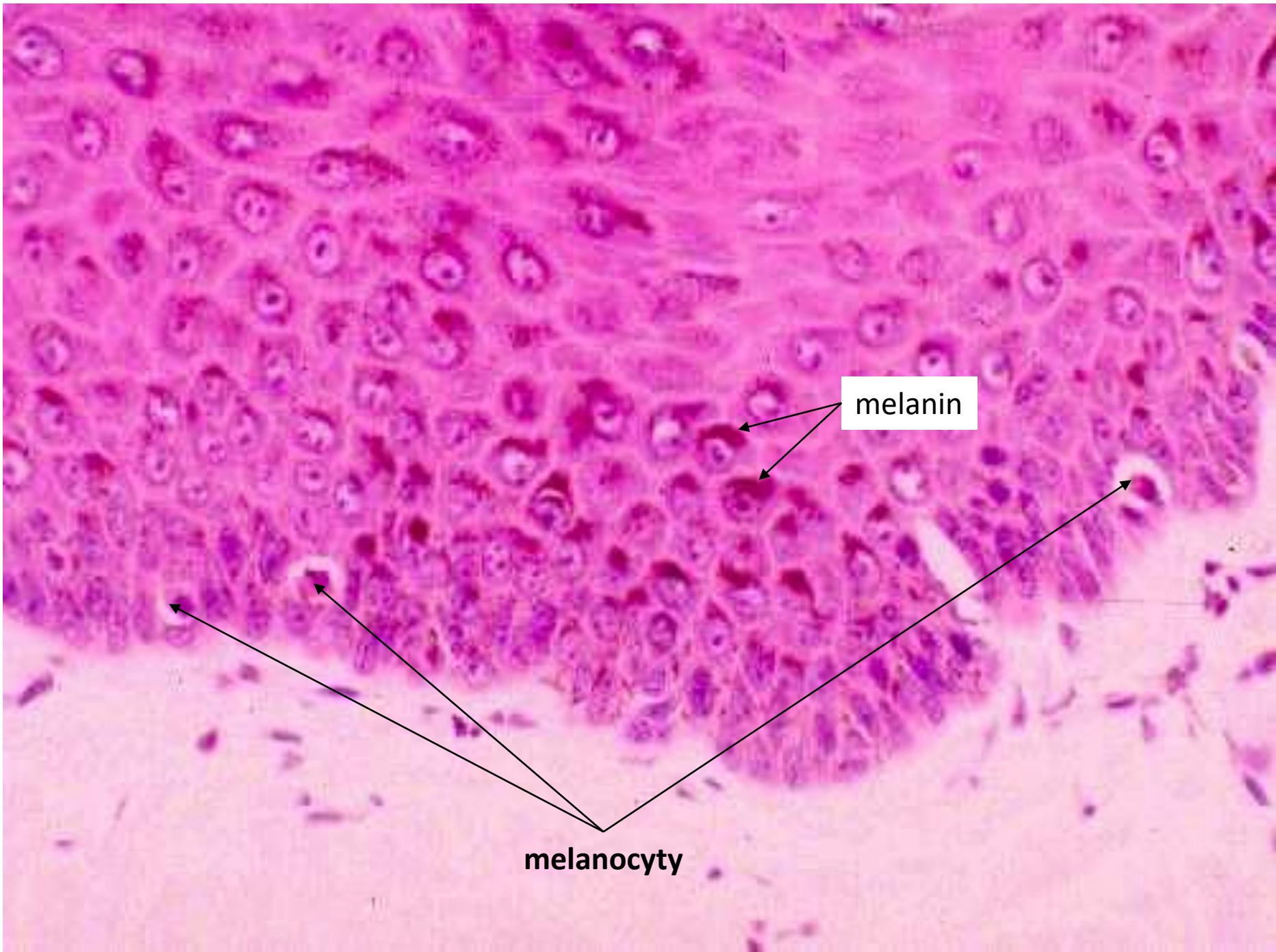
**Podkoží (hypodermis)**



**Epidermis**



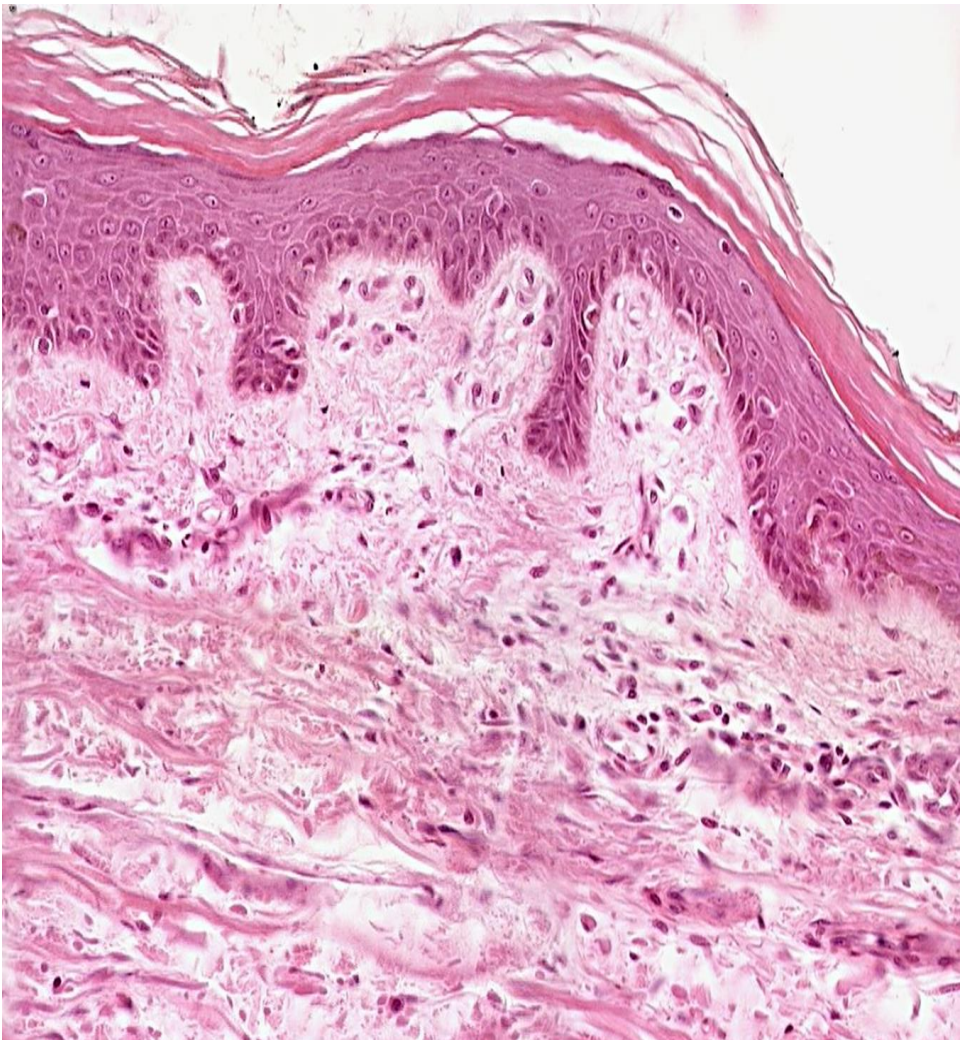
**dermis**



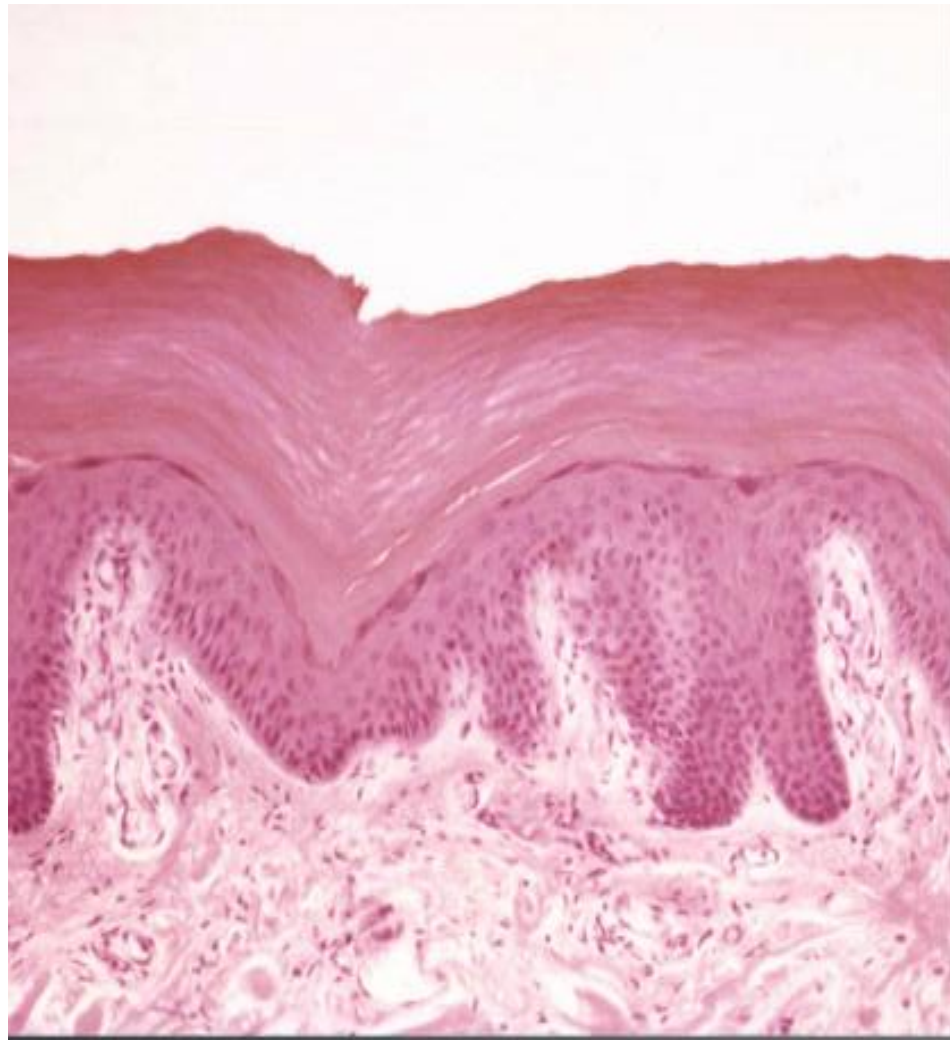
melanin

melanocyty

## Tenký typ kůže



## Tlustý typ kůže

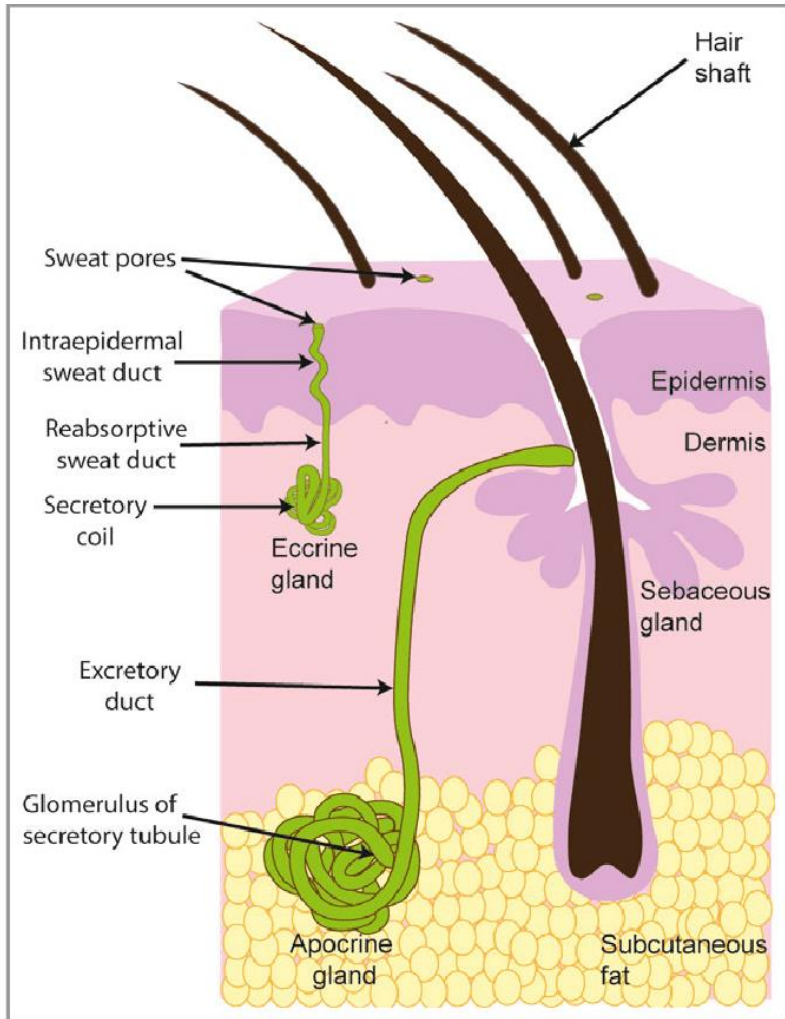


výskyt: *palma manus, planta pedis*

# Kožní žlázy

malé potní (ekrinní)  
velké potní (apokrinní)  
mazové (holokrinní)

} Gll. sudoriferae  
Gll. sebaceae

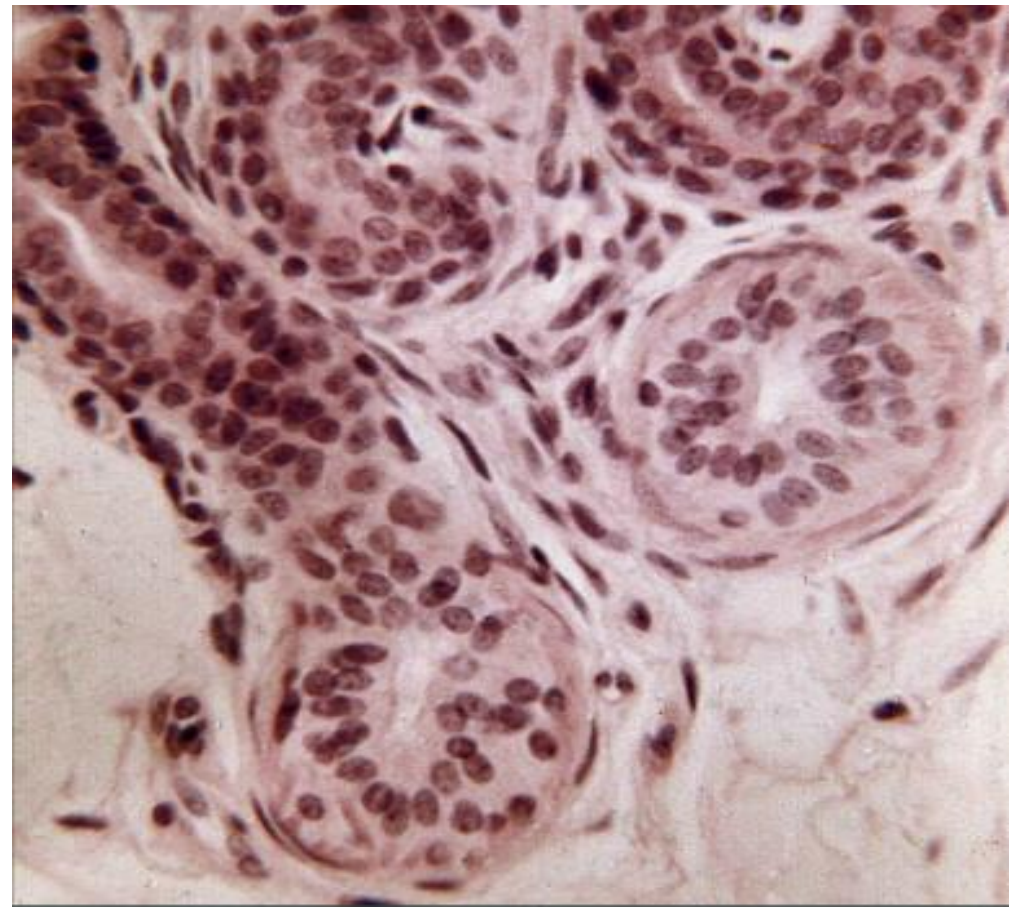
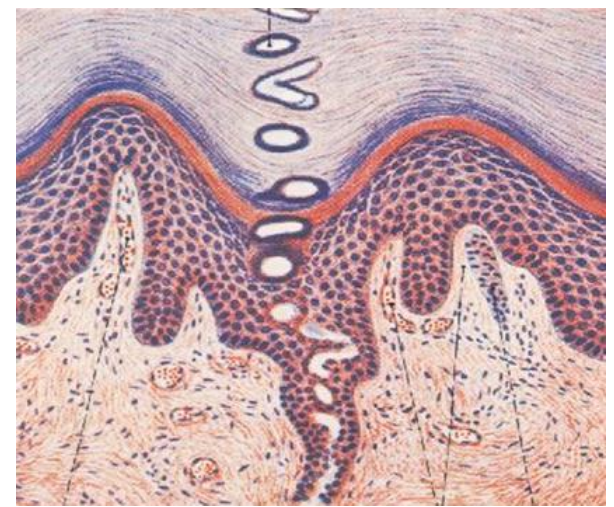
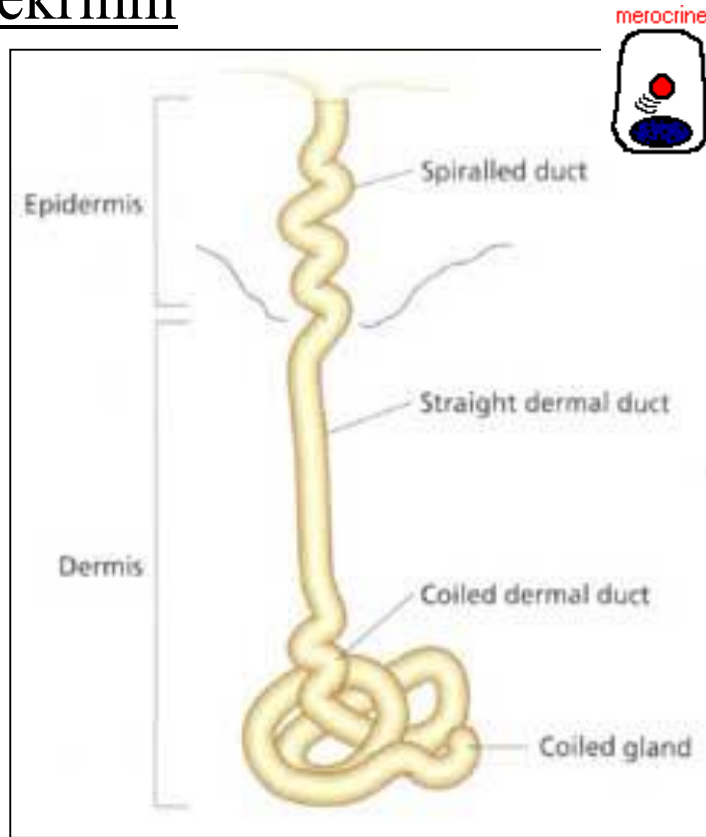


## Stavba žláz – obecně:

- vývodní oddíl
- sekreční oddíl
  - žlázové buňky
  - myoepitelové buňky

# POTNÍ ŽLÁZY (gll. sudoriferae)

ekrinní

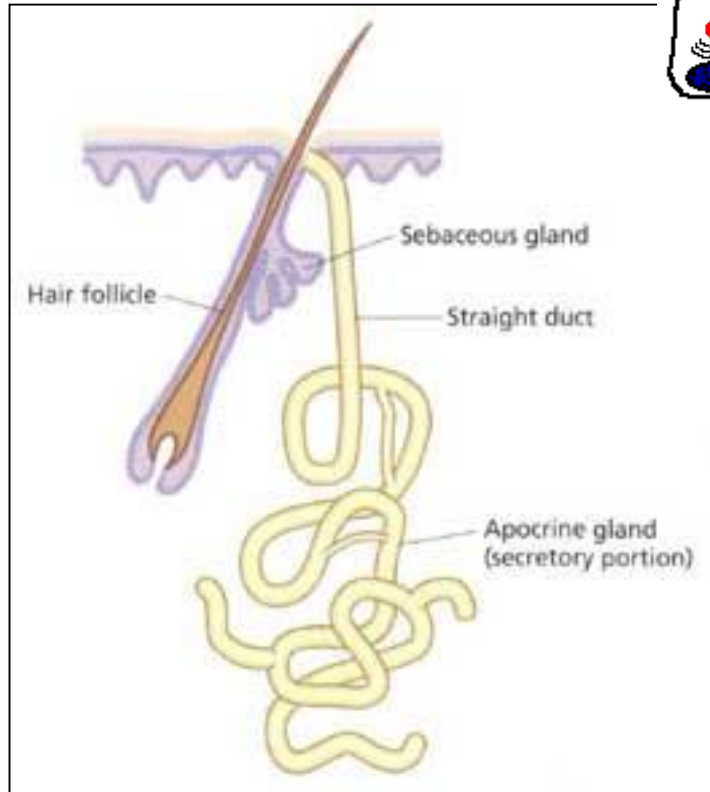


POT – H<sub>2</sub>O, NaCl<sub>2</sub>, NH<sub>3</sub>,  
urea, kys. močová, proteiny

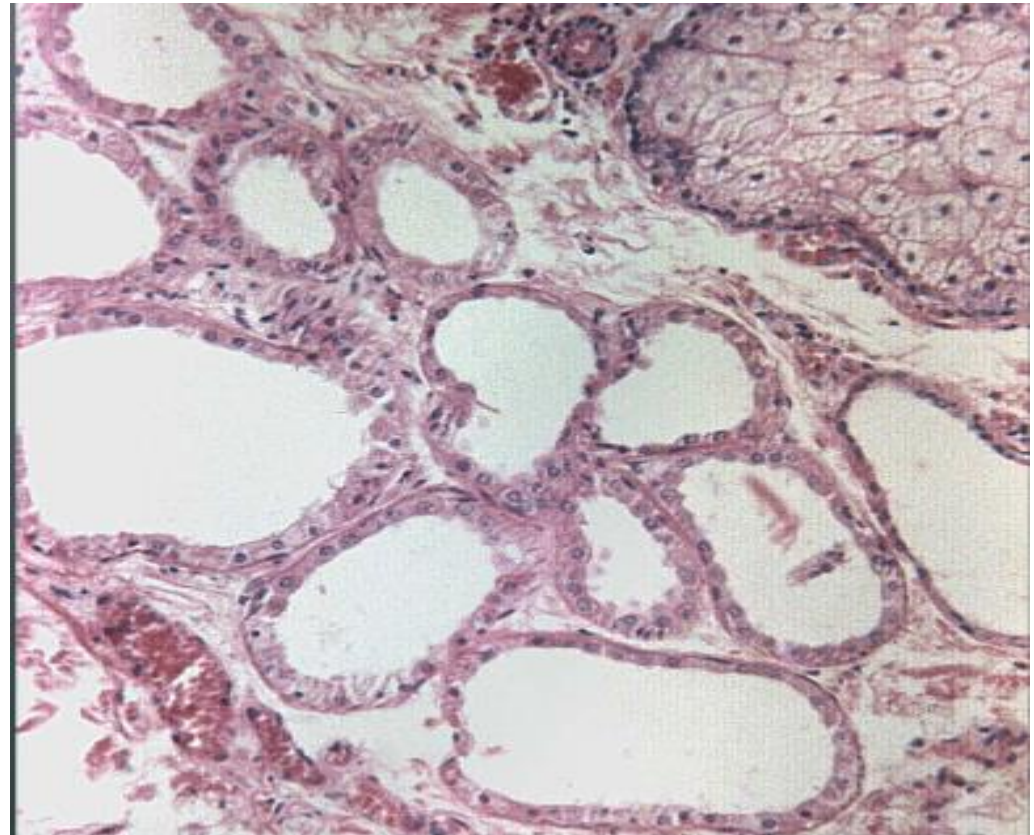
# POTNÍ ŽLÁZY (gll. sudoriferae)

## apokrinní (aromatické)

apocrine

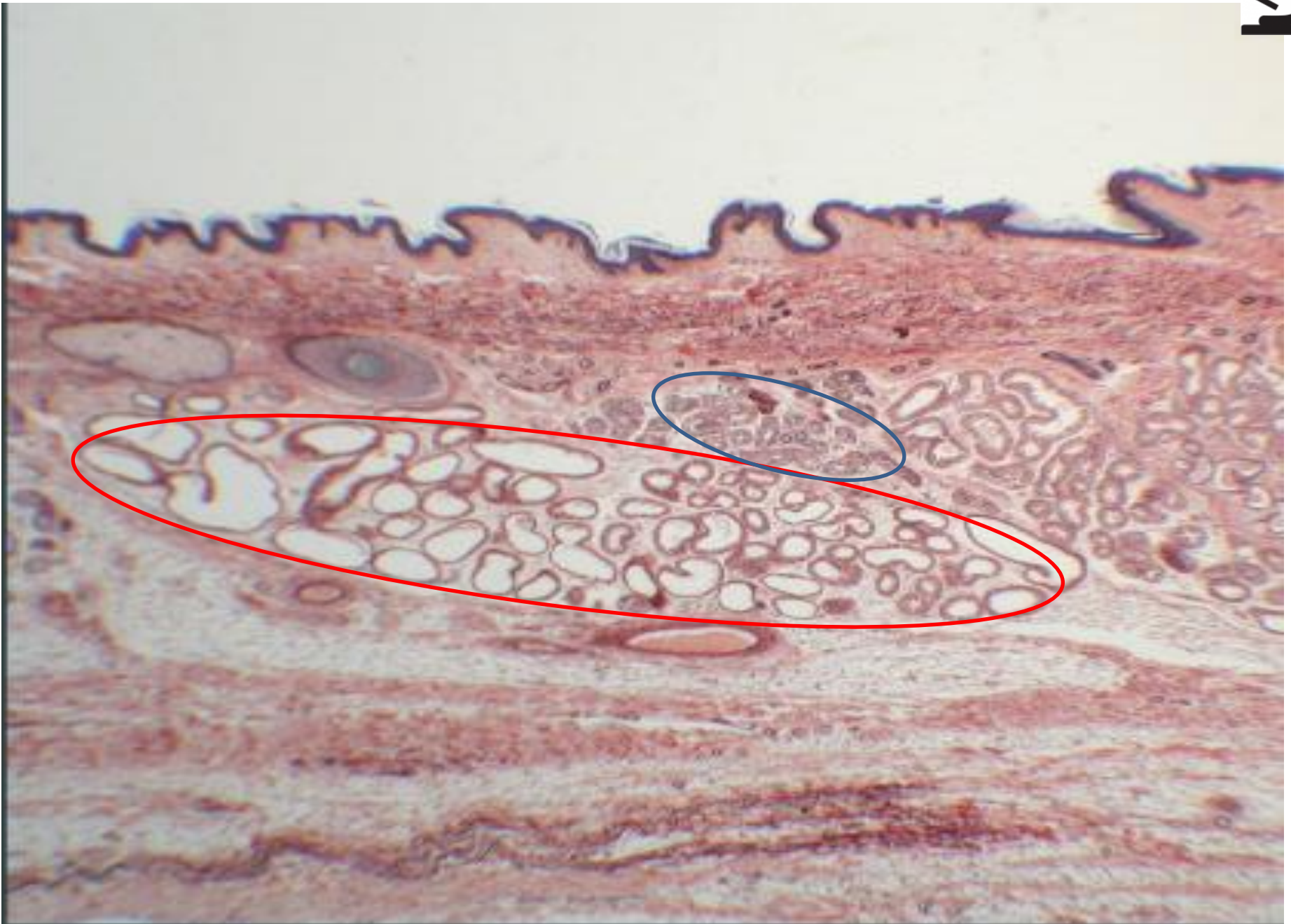


po pubertě doplňují pot  
– feromony, tuk, steroidy;  
vliv hormonů





**Kůže z axilly – velké potní žlázy (apokrinní, aromatické)**

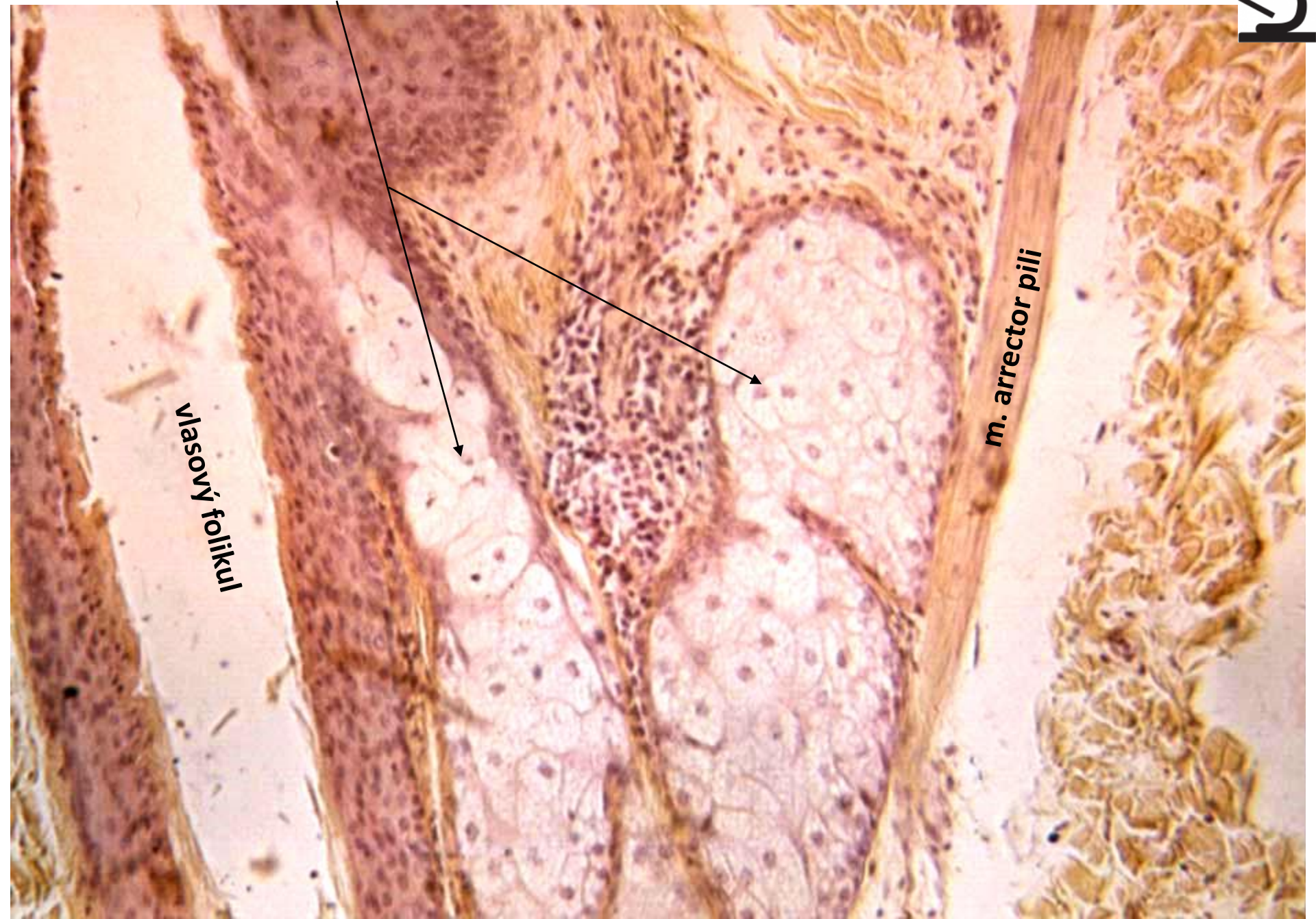


# Mazová žláza (HEŠ)

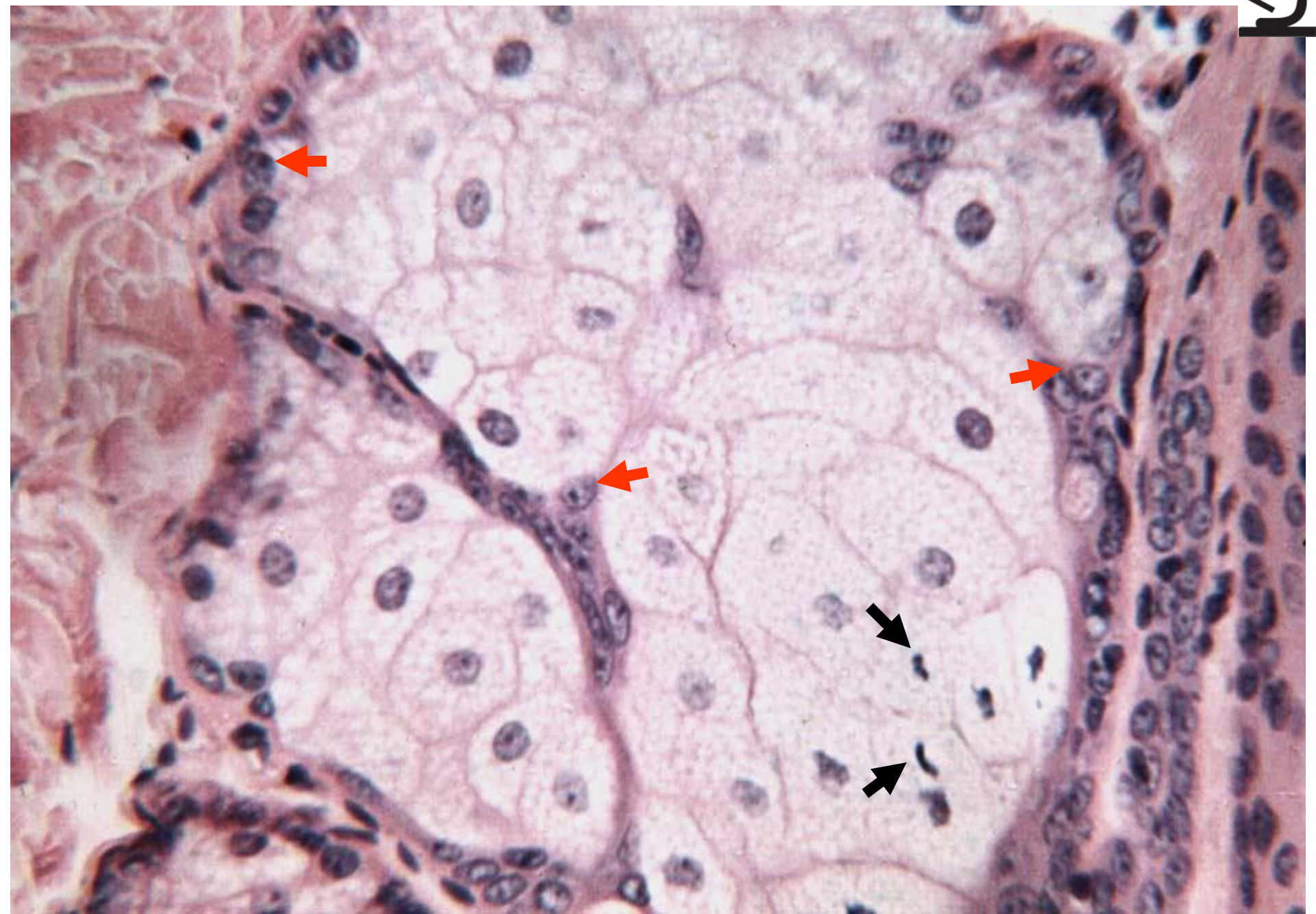


vlasový foliklul

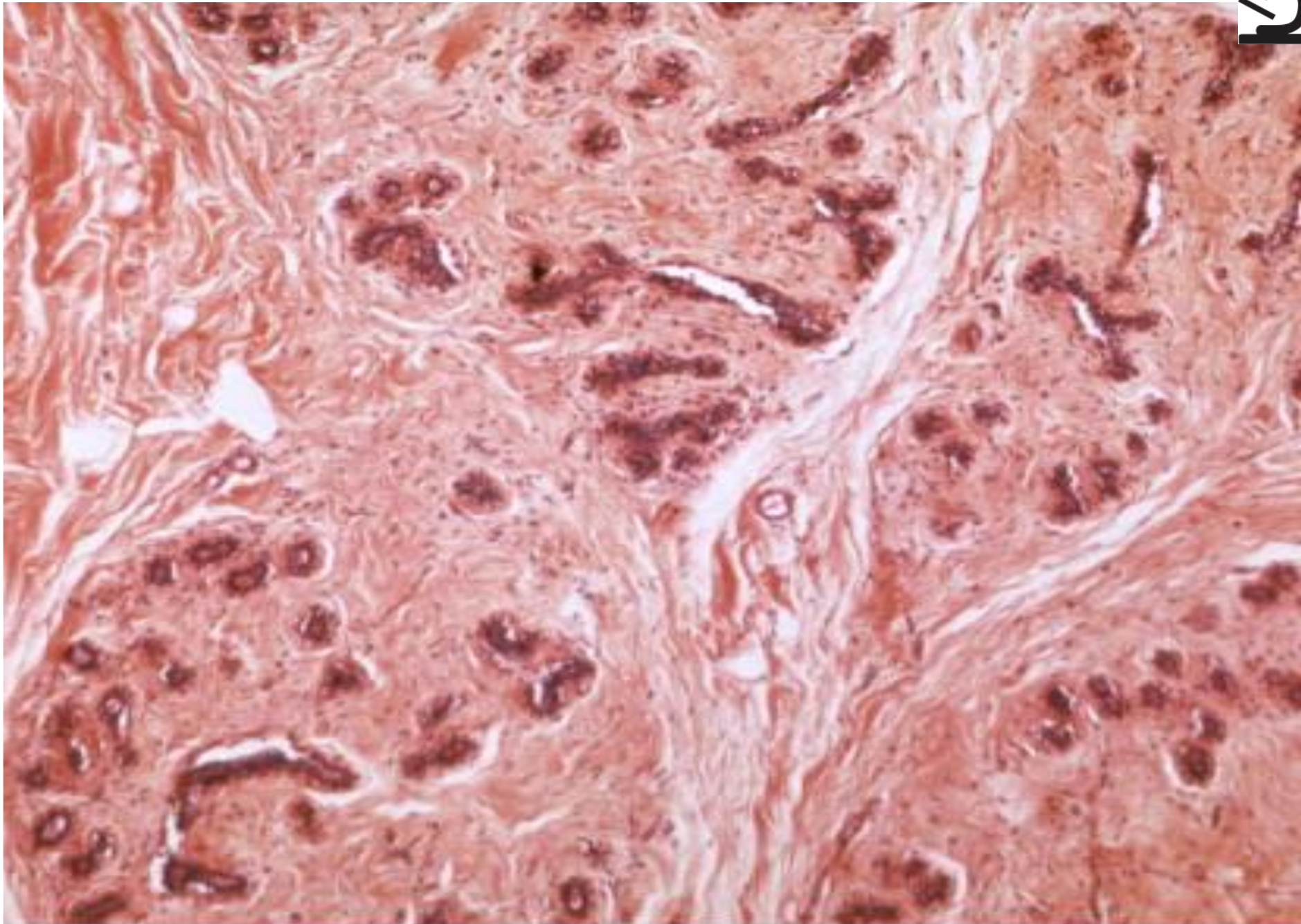
*m. arrector pili*



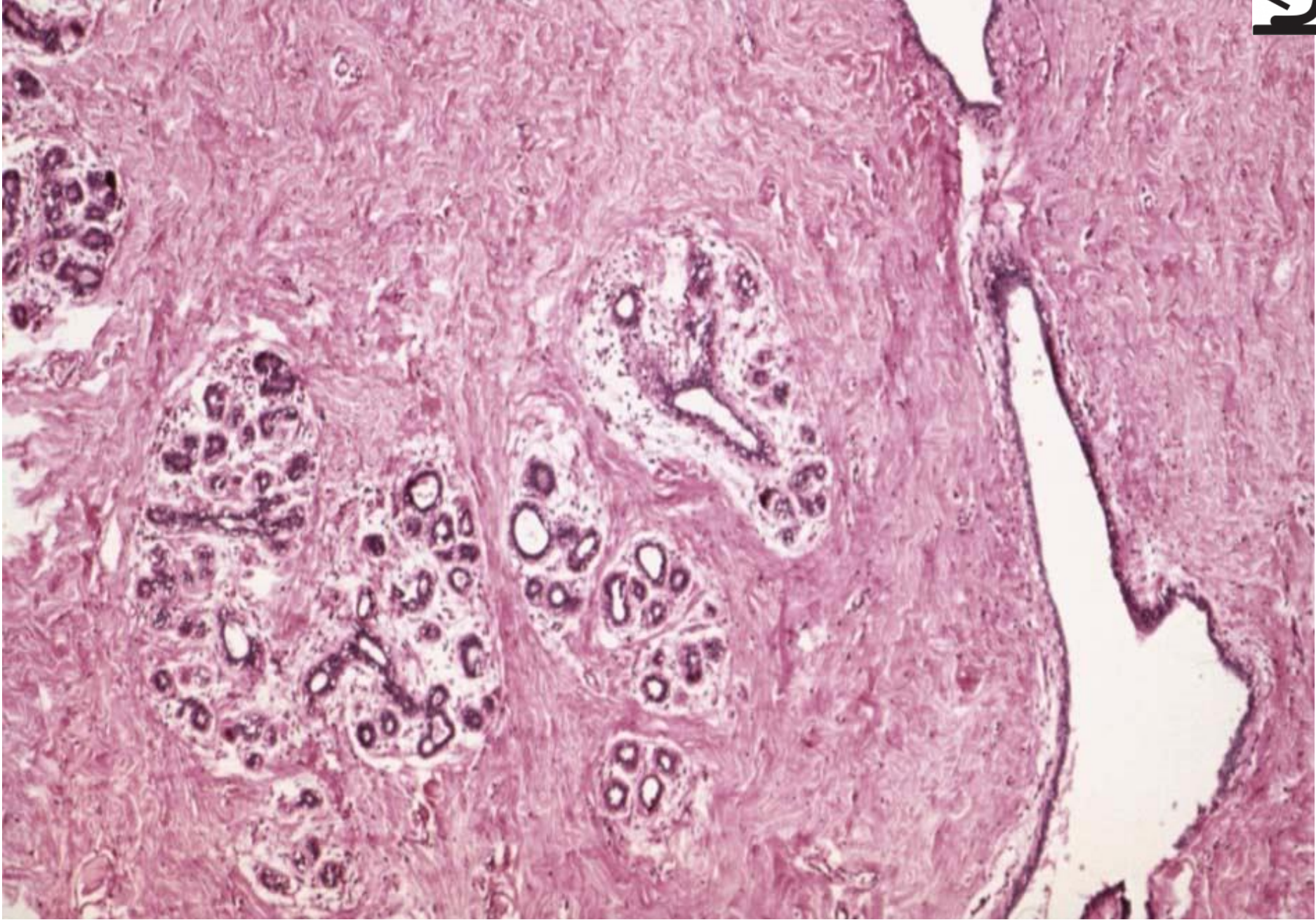
# Mazová žláza (HE)



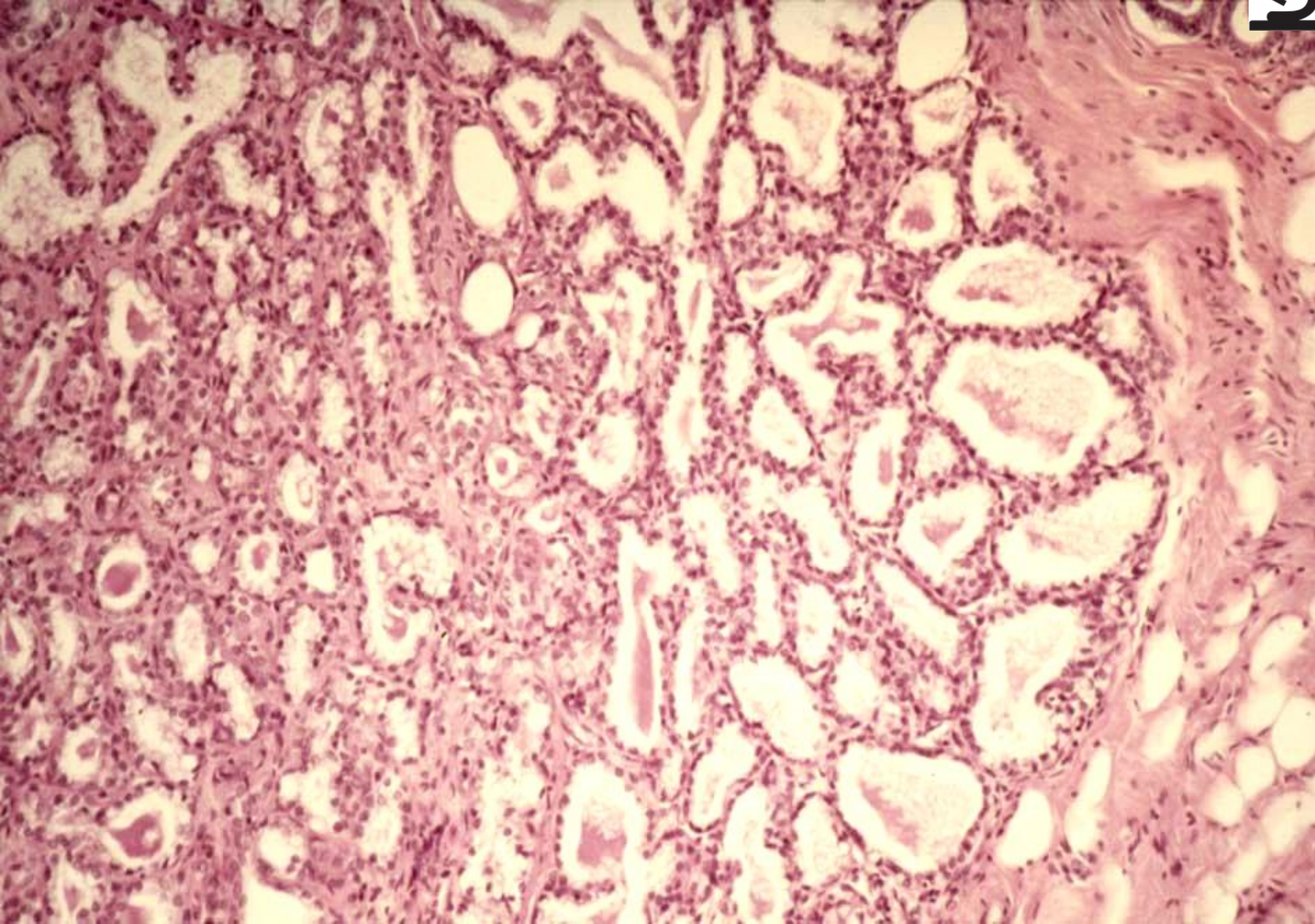
Mamma non lactans (HE)



Mamma non lactans (HE)



Mamma lactans (HE)



# Kůže z axily – chlupové folikuly



gll.  
sebaceae

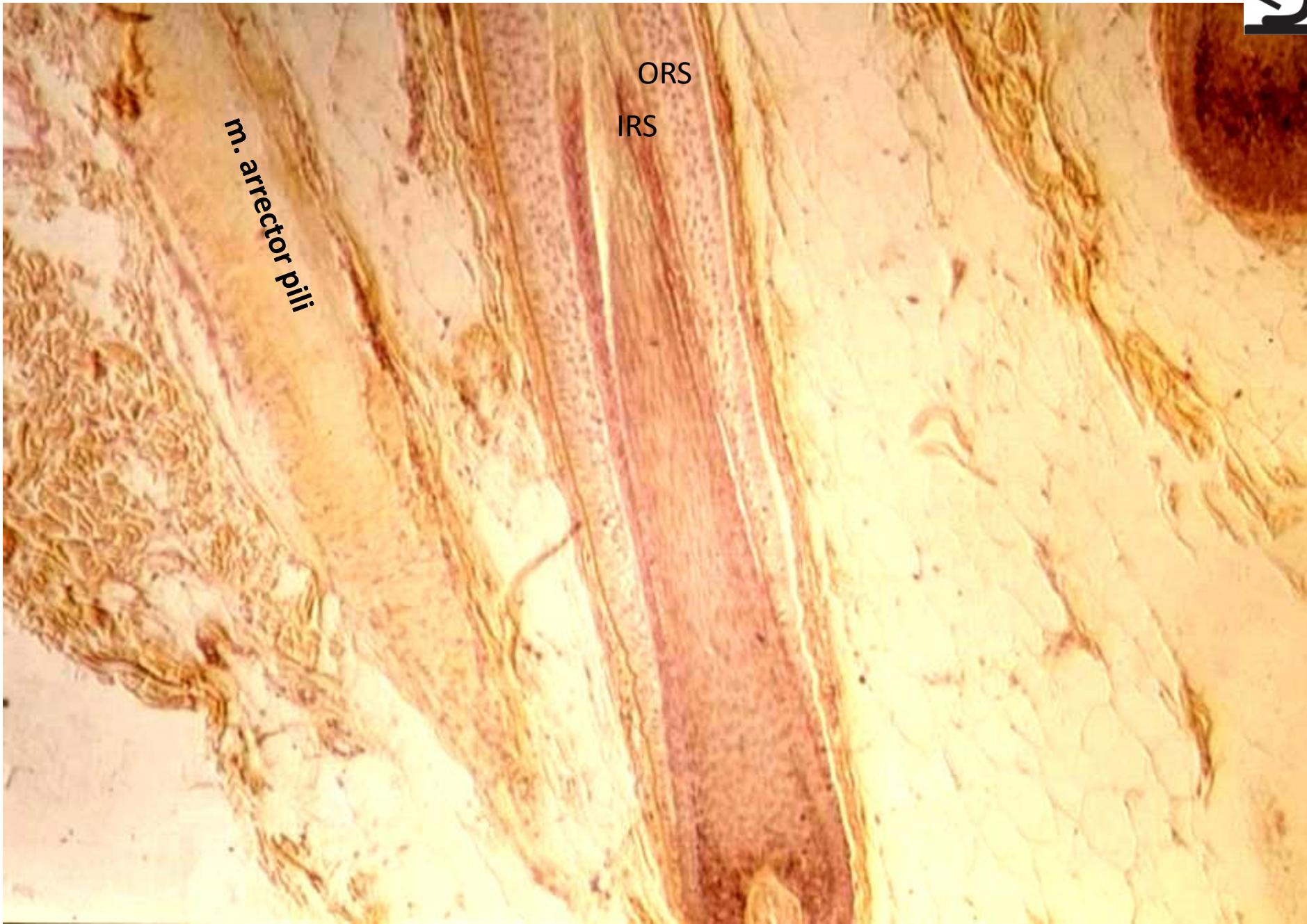
gll.  
apocrinae

# Vlas (HEŠ)



*m. arrector pili*

ORS  
IRS





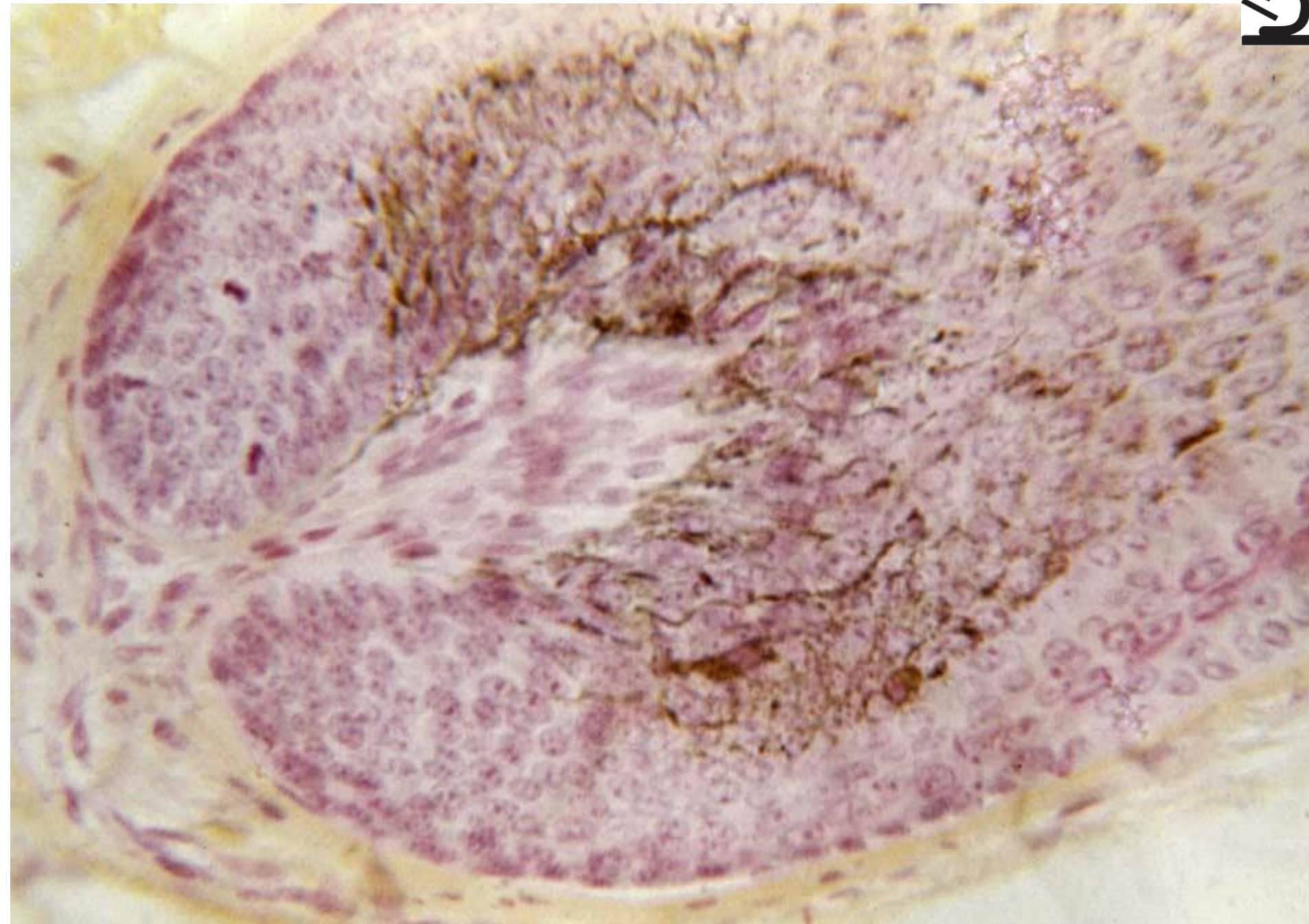
# Vlas – bulbus pili s melanocyty (HEŠ)



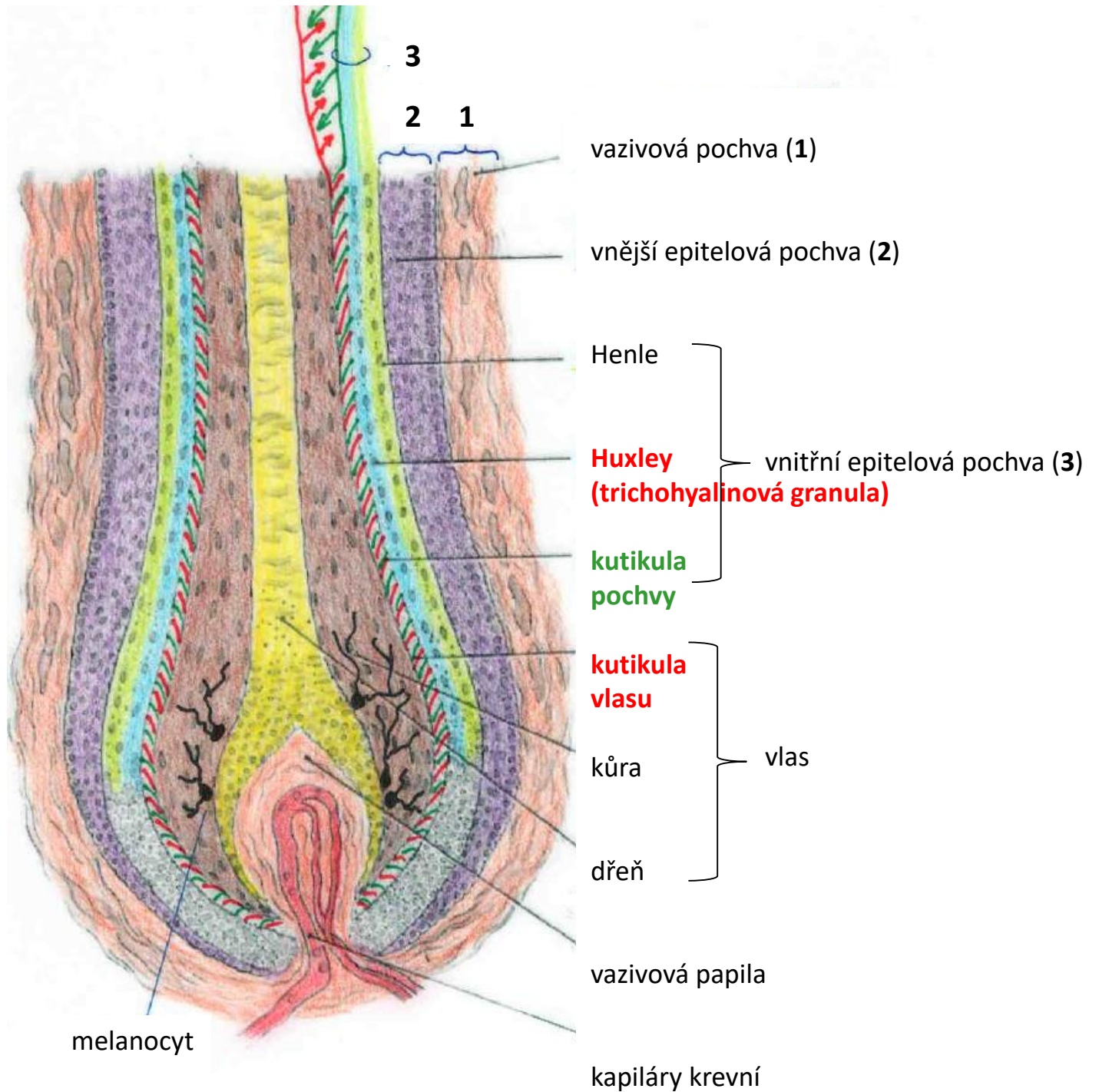
papilla pili



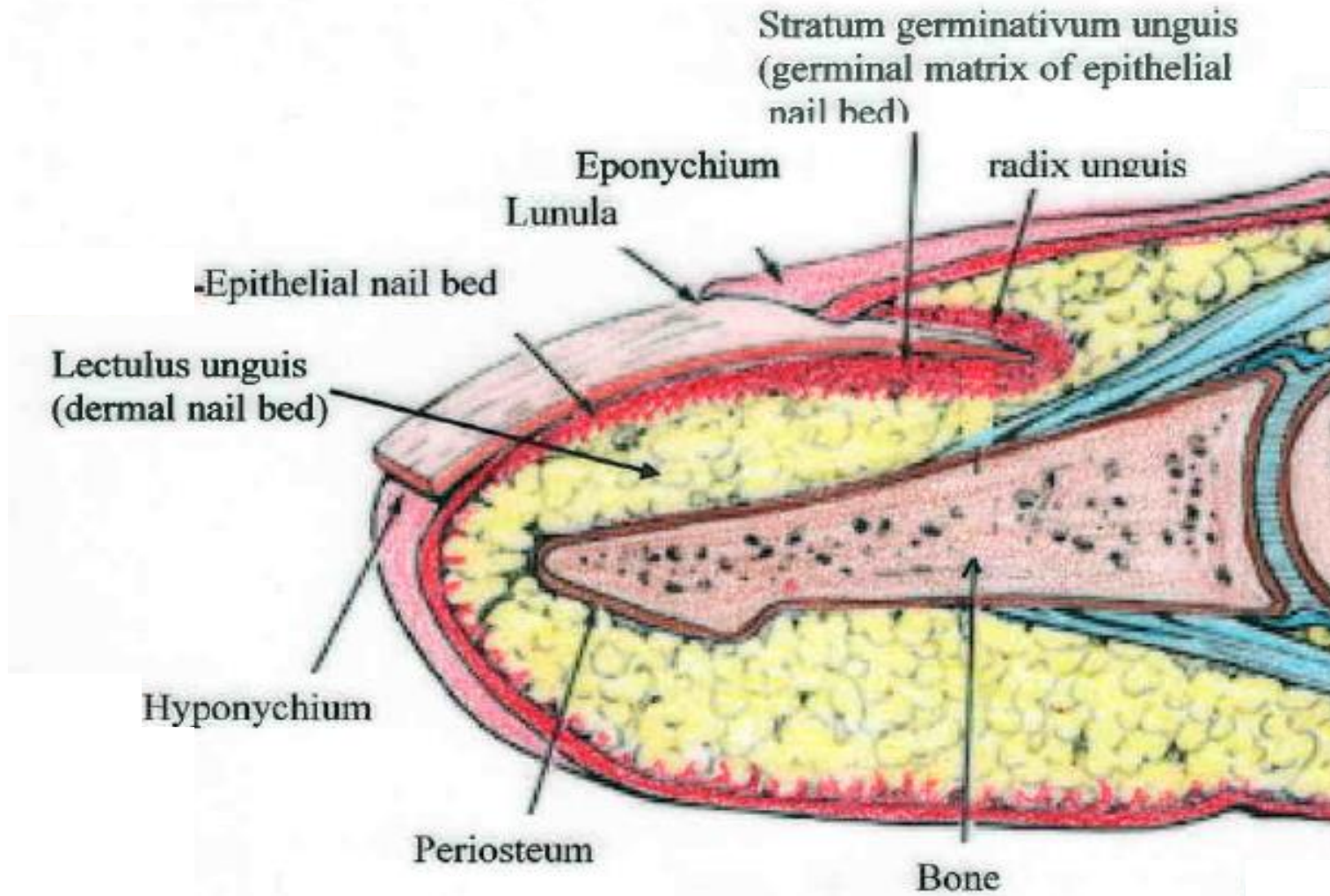
Vlas – bulbus pili s melanocyty, papilla pili (HEŠ)



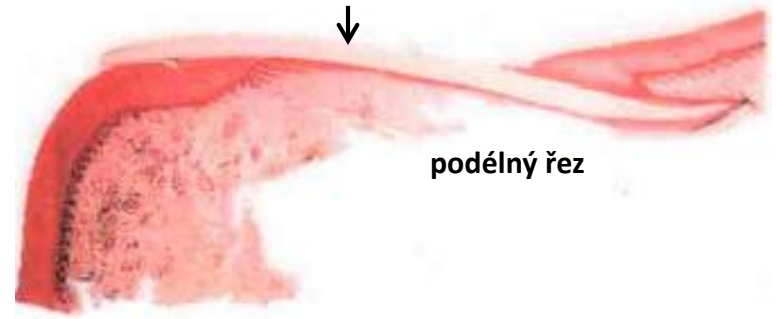
# Vlas – Pilus (lat)



Nehet – Unguis (lat) – Onyx (gr)



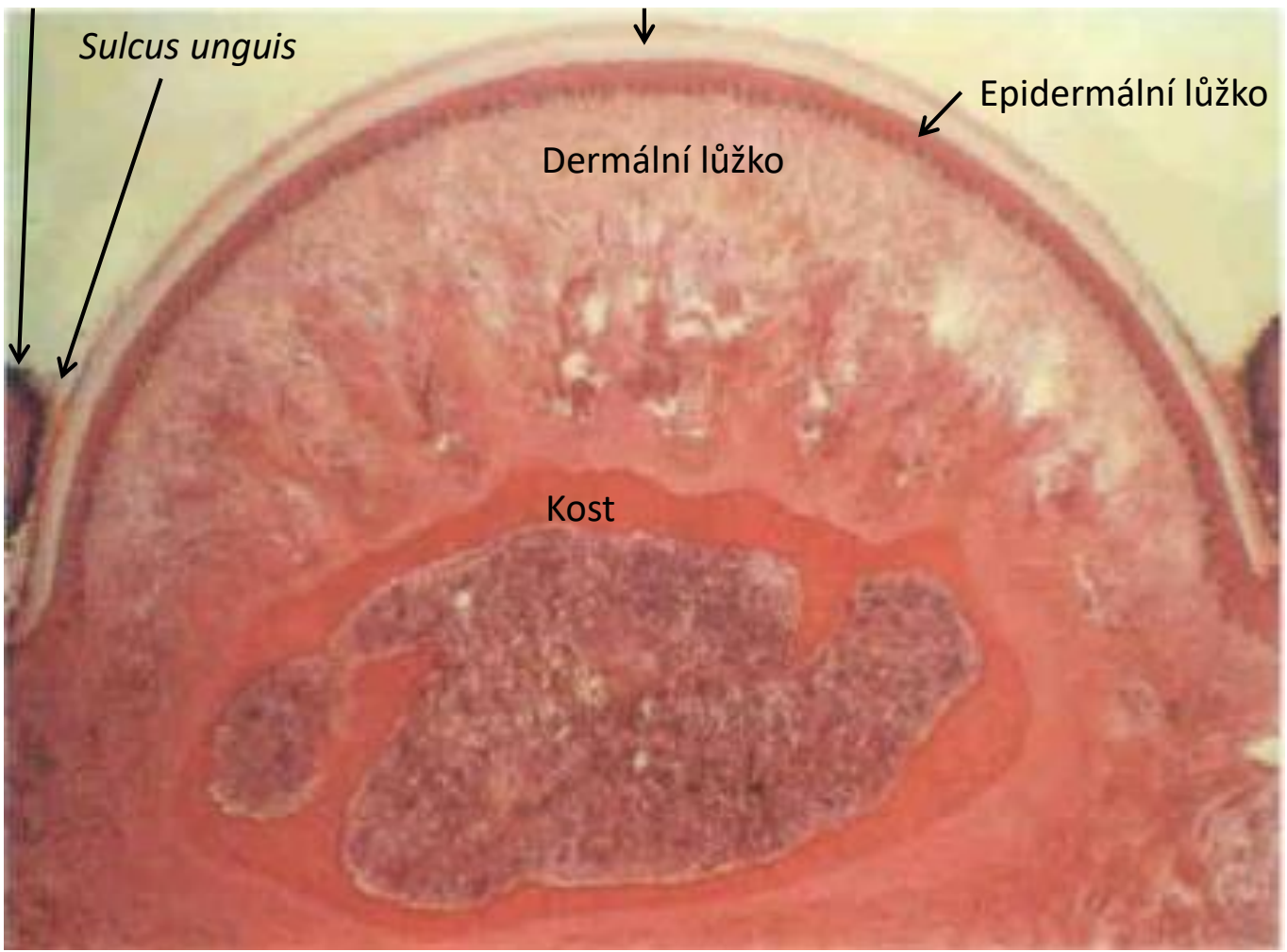
# Nehet



podélný řez

*Vallum unguis*

Nehtová ploténka



*Sulcus unguis*

Epidermální lůžko

Dermální lůžko

Kost

příčný řez



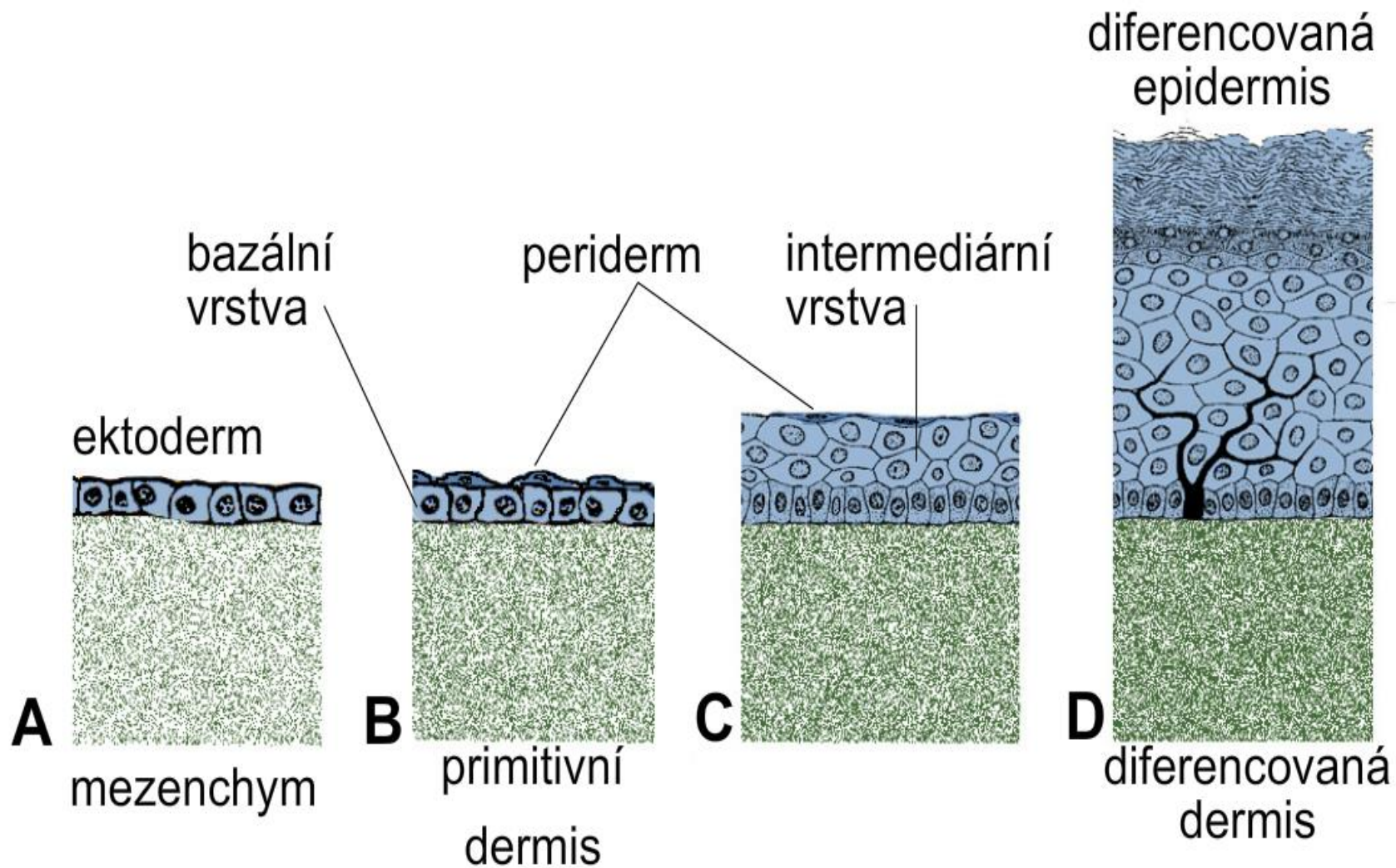
# KŮŽE A KOŽNÍ ADNEXA



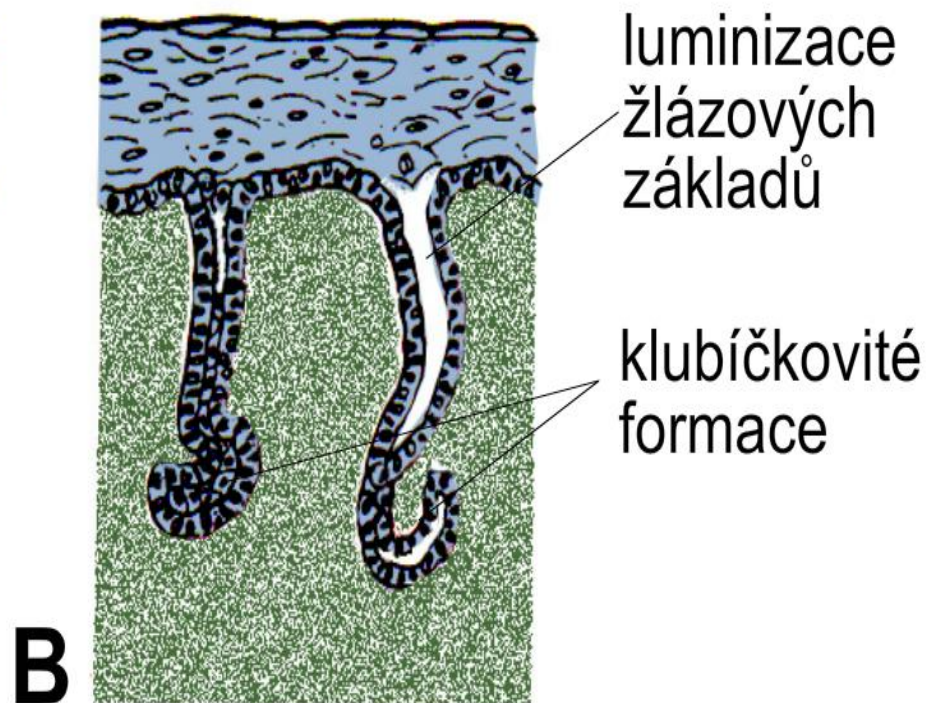
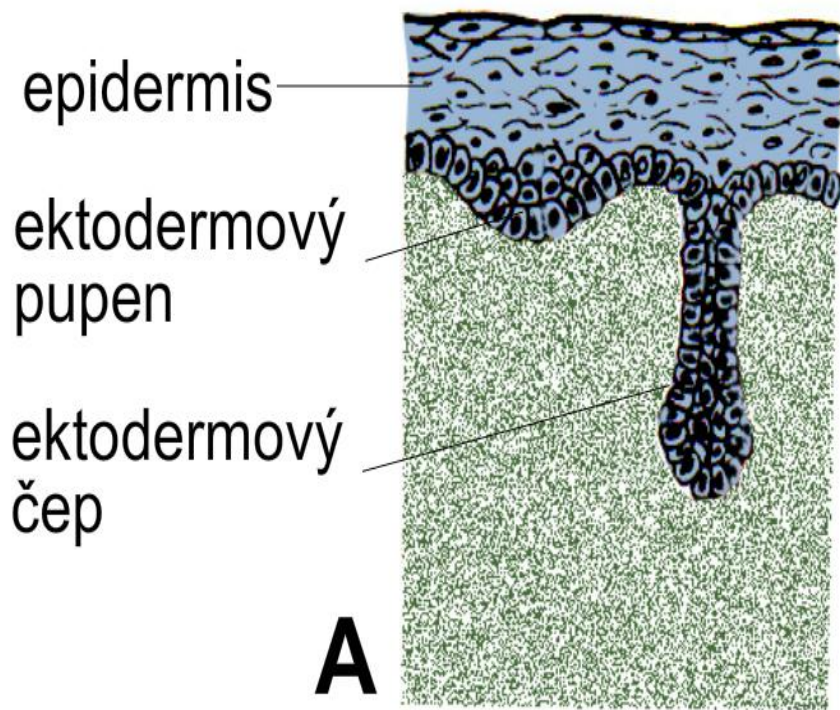
## Preparáty:

- 69. Kůže z břicha prstu
- 70. Kůže z axilly
- 71. Kůže s vlasy
- 72. Nehet
- 73. Mamma non-lactans
- 74. Mamma lactans

# Vývoj epidermis a coria

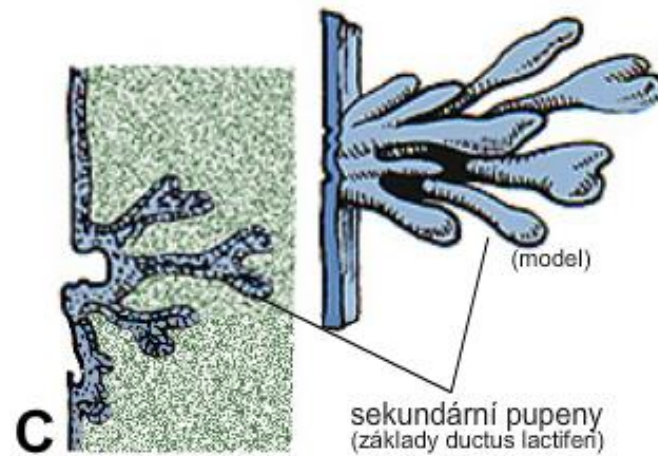
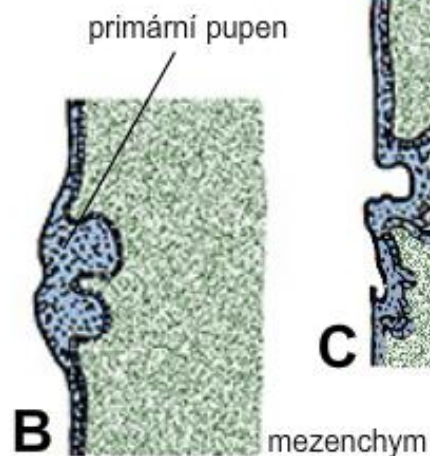
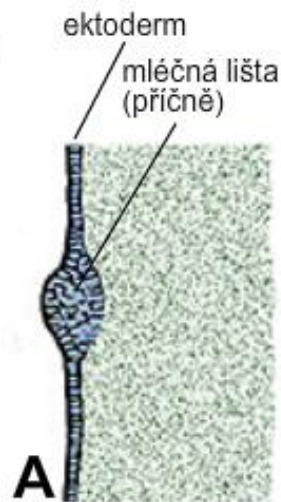
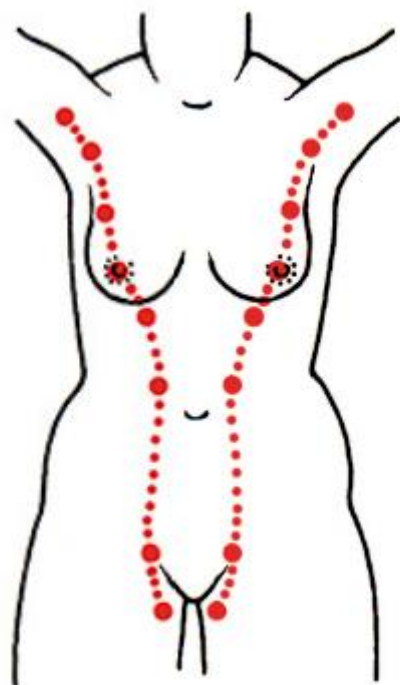


# Vývoj potních žláz





# Vývoj mléčné lišty a mléčné žlázy



# Vývoj vlasu a mazové žlázy

