
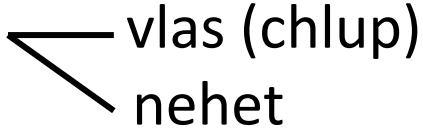
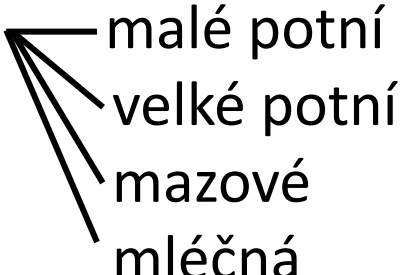




KŮŽE A KOŽNÍ ADNEXA

- Kůže 
 - tenký typ
 - tlustý typ

- Rohovějící adnexa 
 - vlas (chlup)
 - nehet

- Nerohovovějící adnexa — žlázy 
 - malé potní
 - velké potní
 - mazové
 - mléčná

Kůže (*integumentum*)

Pokožka (*epidermis*)

stratum corneum proprium

(*stratum lucidum*)

stratum granulosum

stratum spinosum

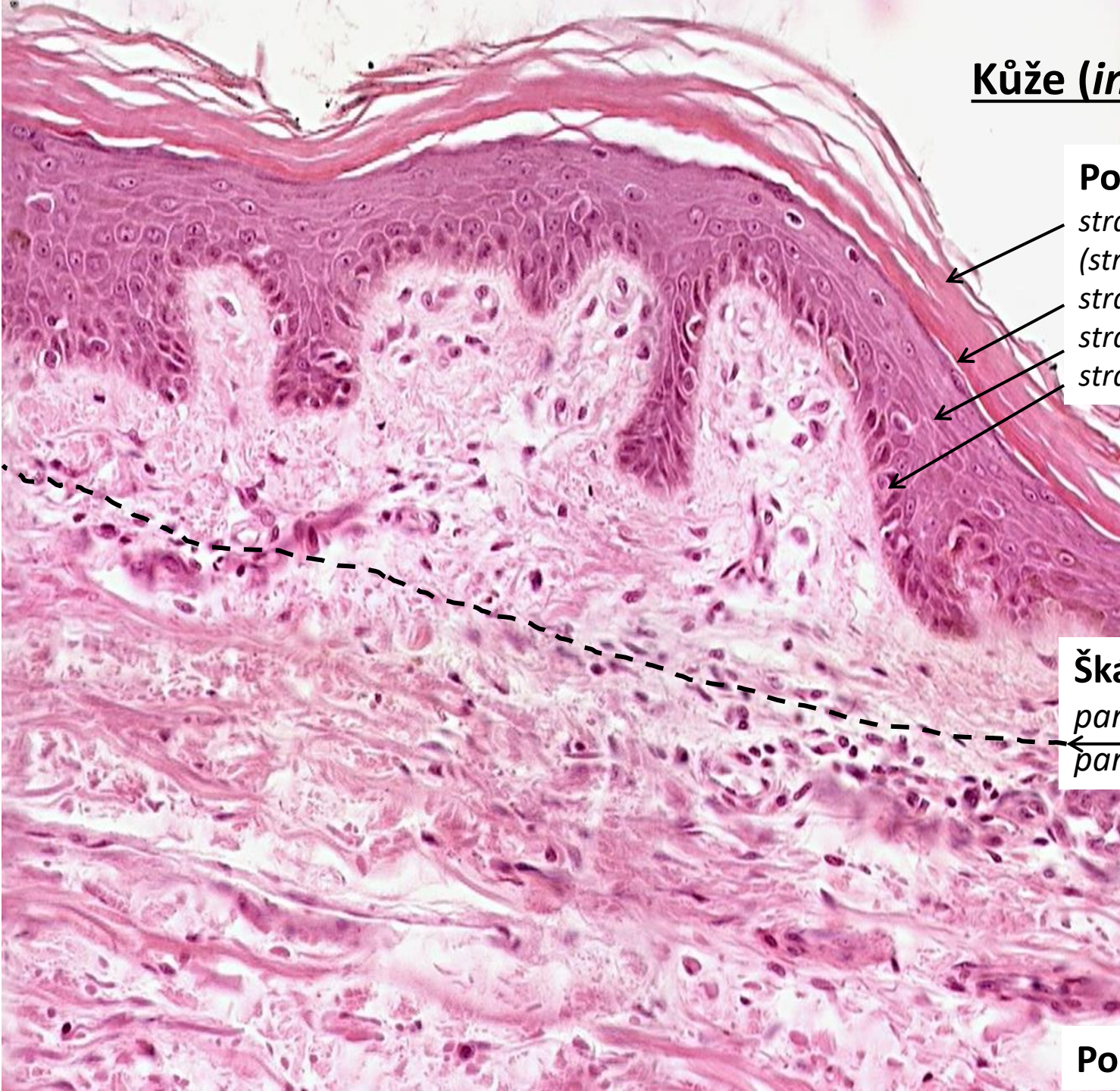
stratum basale

Škára (*dermis, corium*)

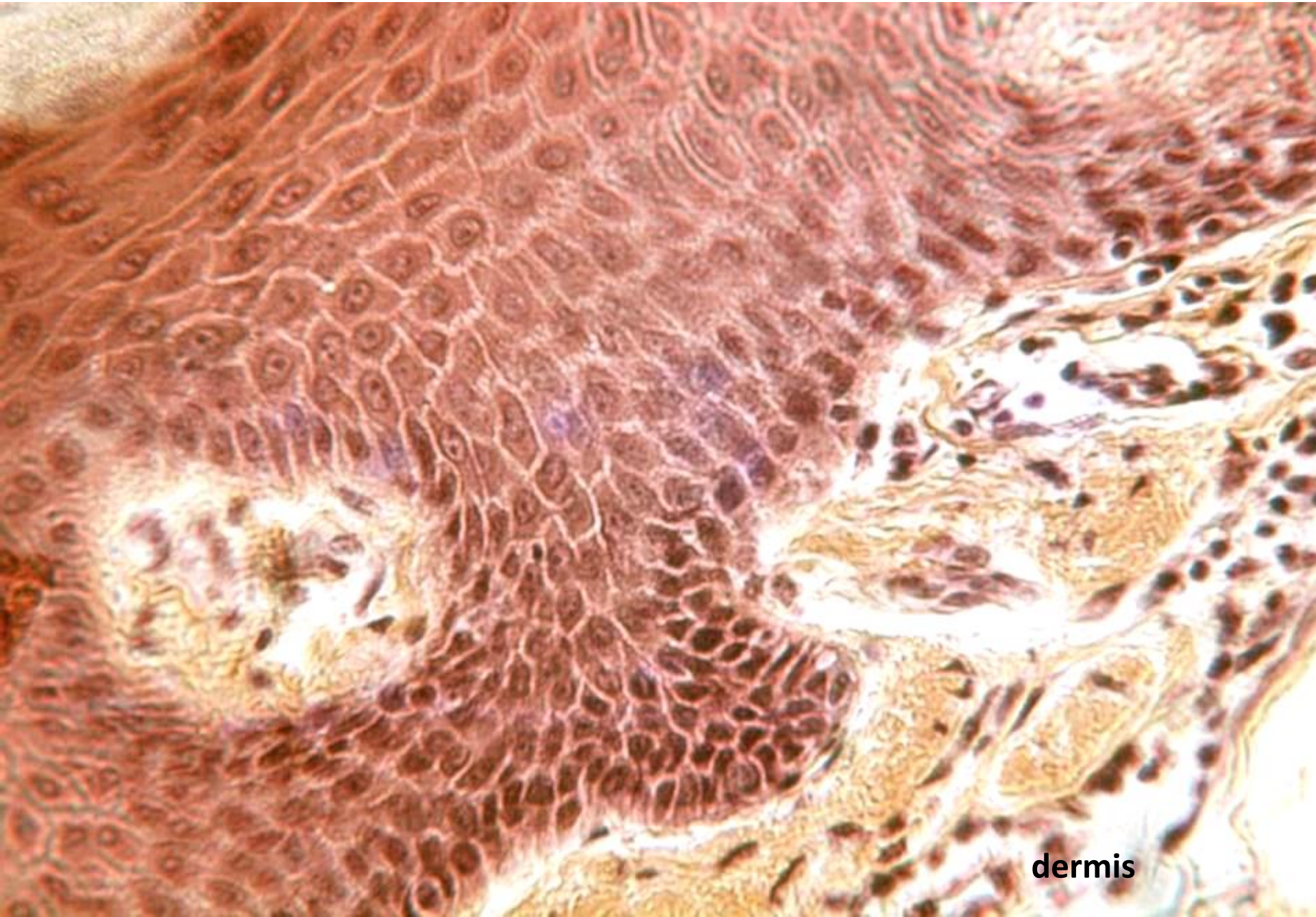
pars papillaris

pars reticularis

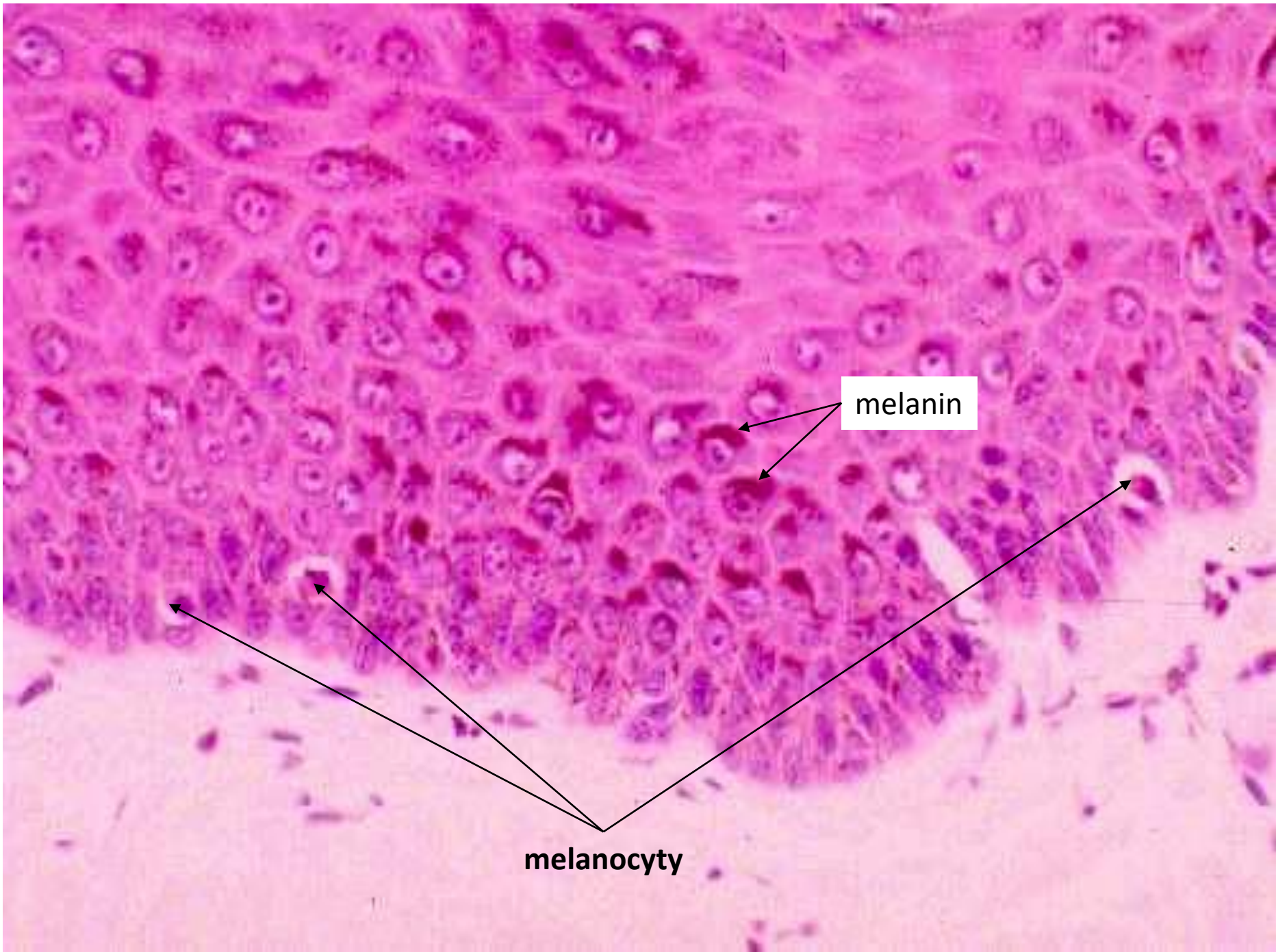
Podkoží (*hypodermis*)



Epidermis



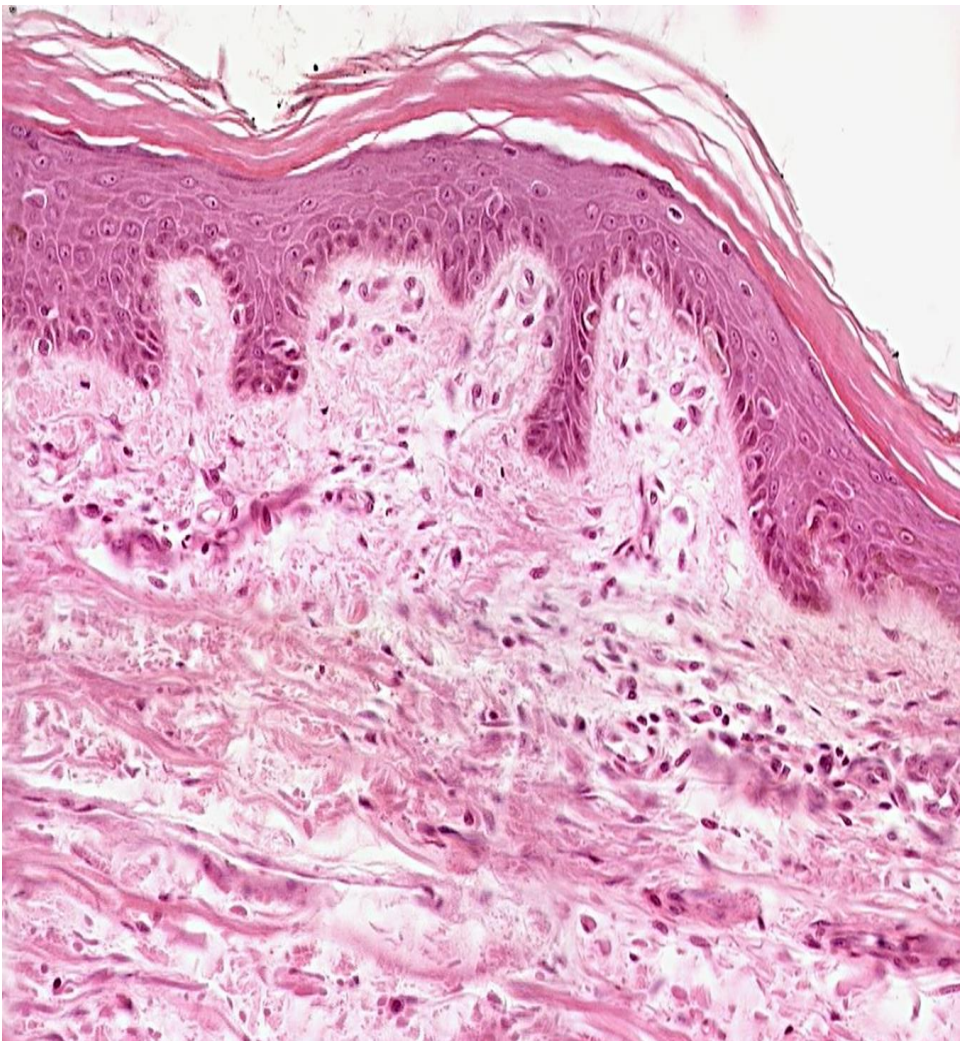
dermis



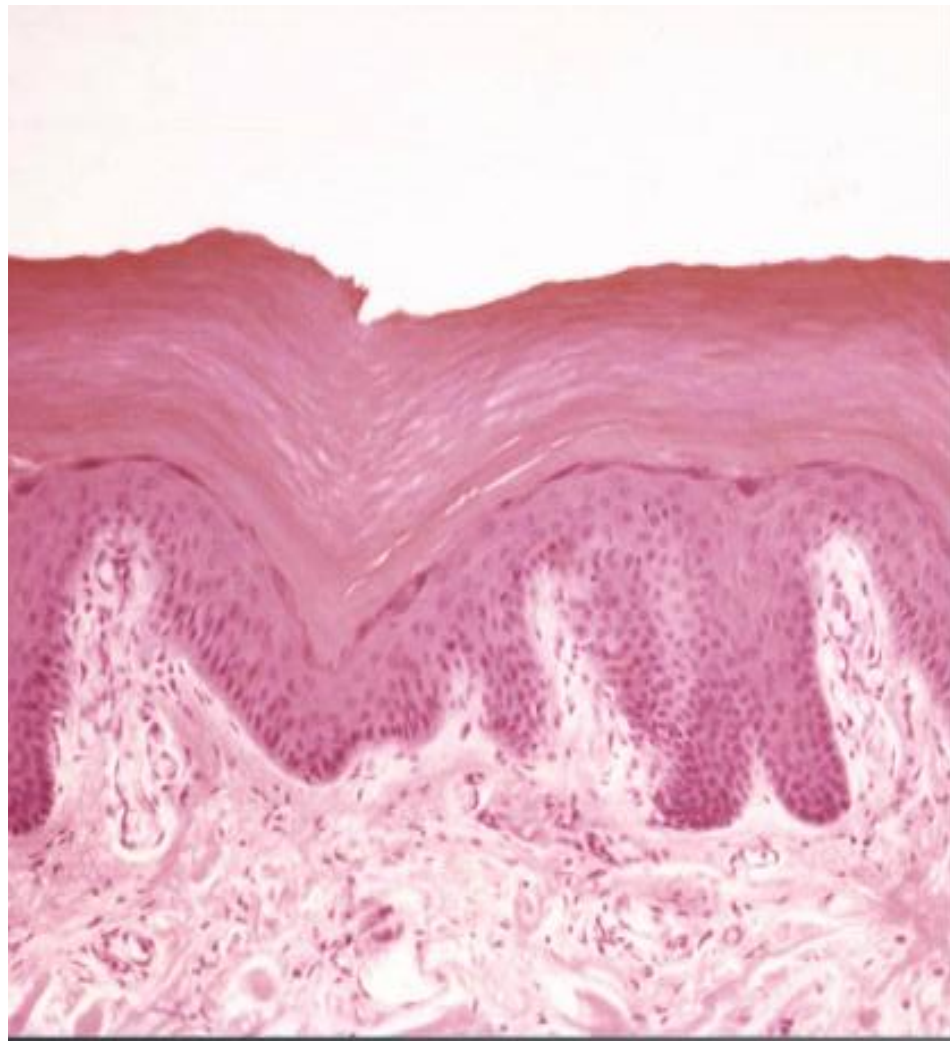
melanin

melanocyty

Tenký typ kůže



Tlustý typ kůže

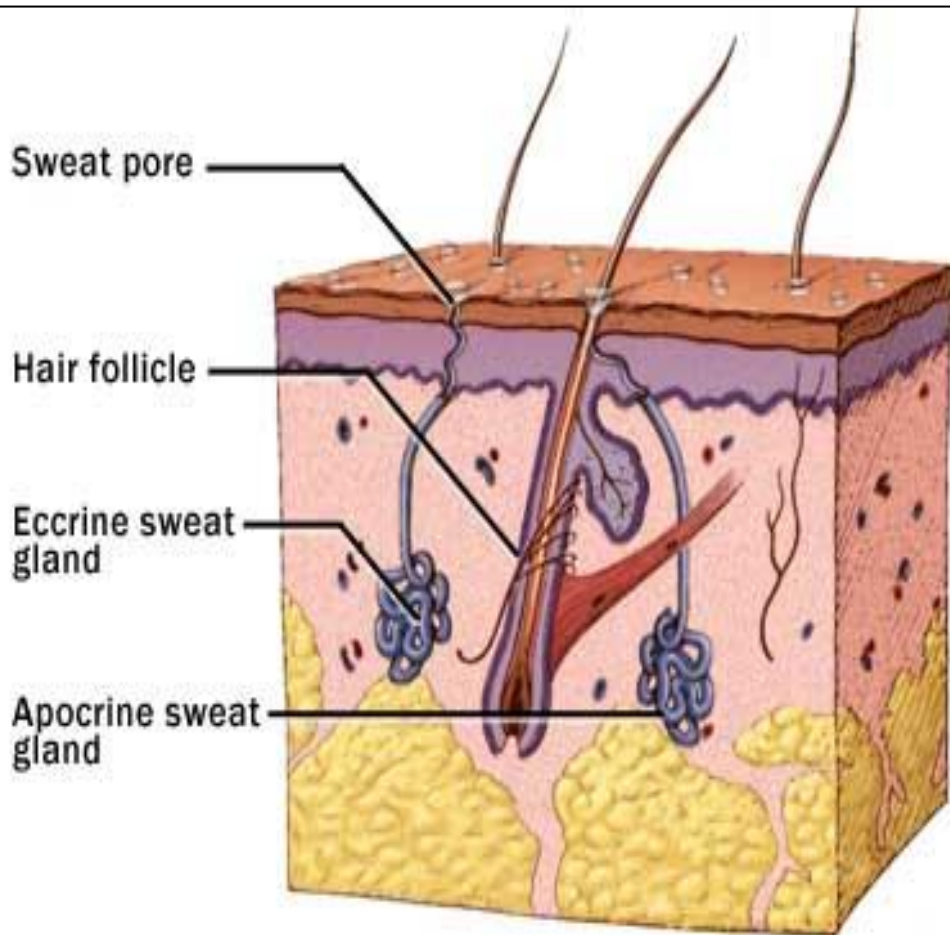


Výskyt: *palma manus, planta pedis*

Kožní žlázy

malé potní (ekrinní)
velké potní (apokrinní)
mazové (holokrinní)

} *Gll. sudoriferae*
Gll. sebaceae

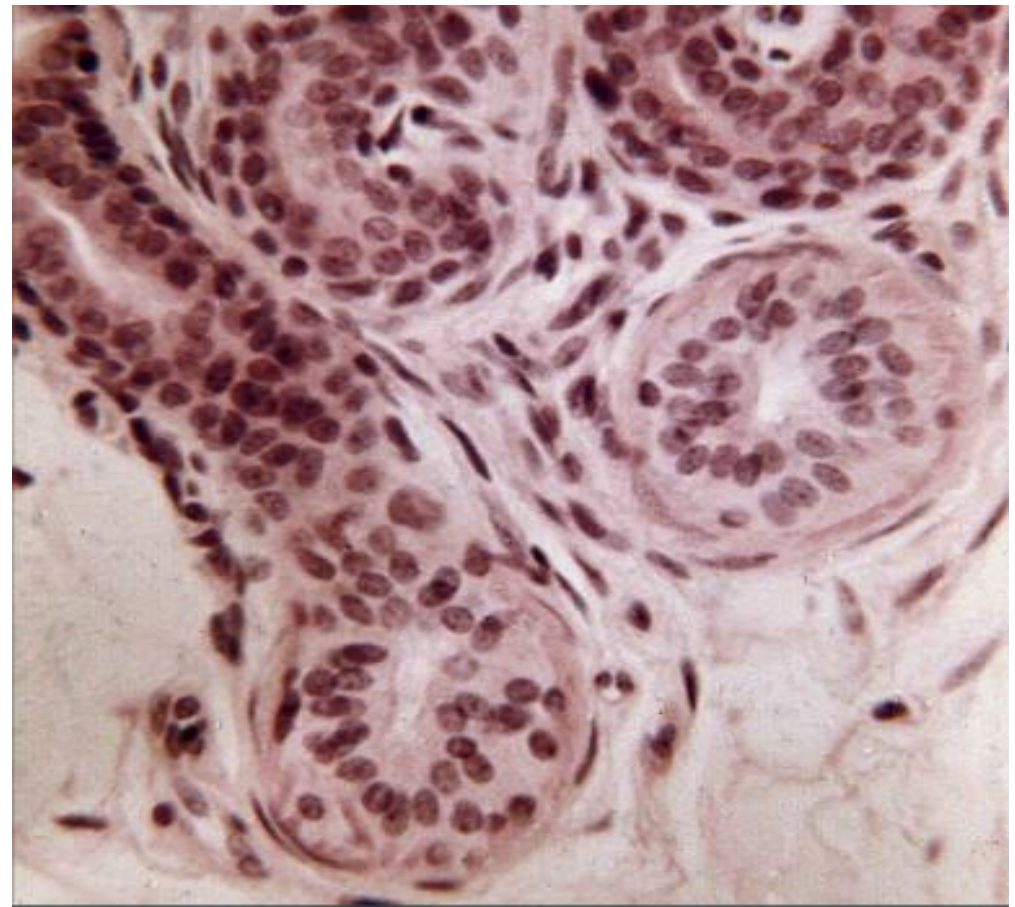
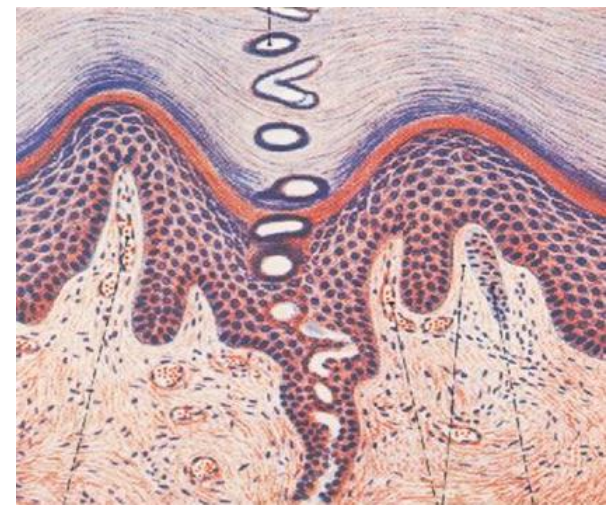
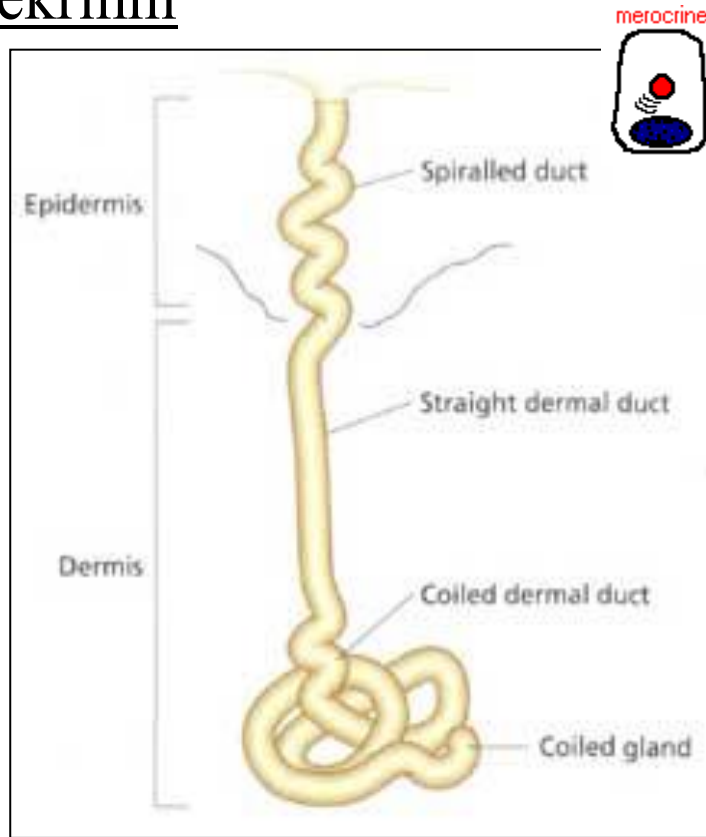


Stavba žláz – obecně:

- vývodní oddíl
- sekreční oddíl
 - žlázové buňky
 - myoepitelové buňky

POTNÍ ŽLÁZY (*gll. sudoriferae*)

ekrinní

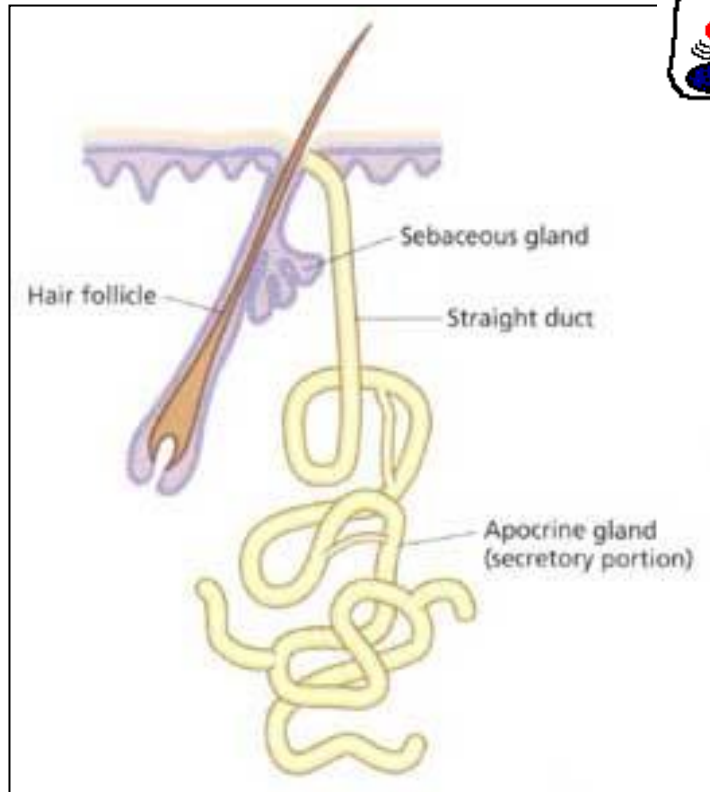


POT – H₂O, NaCl₂, NH₃,
urea, kys. močová, proteiny

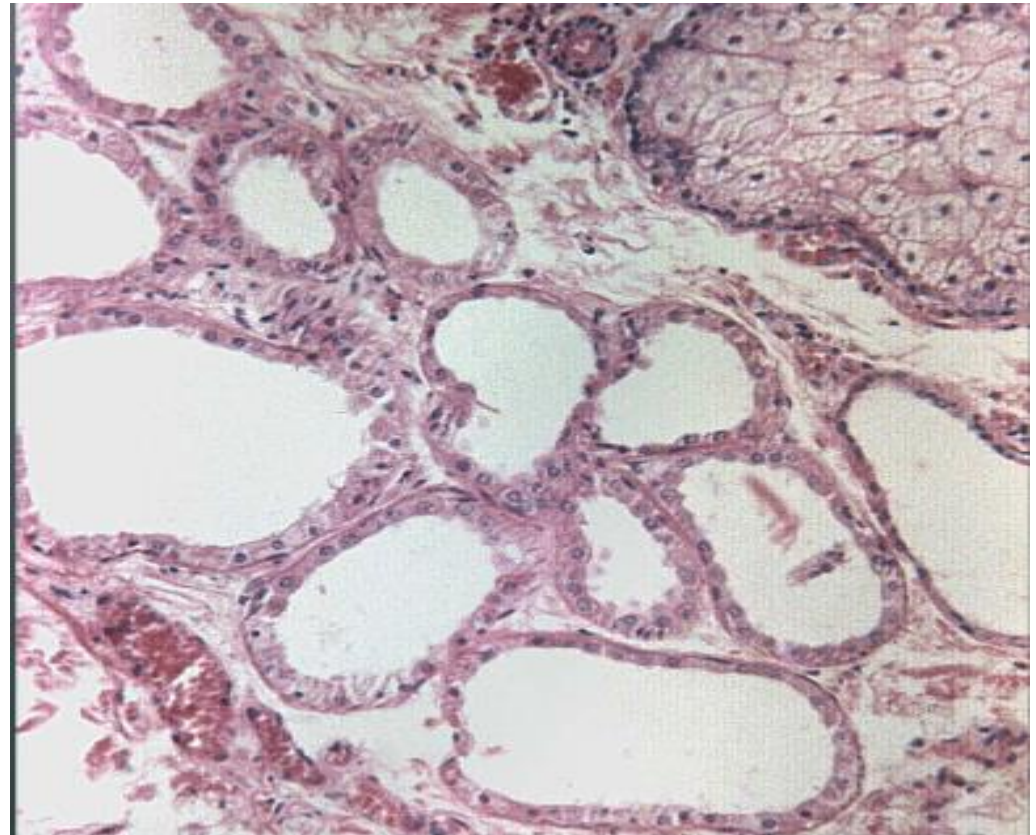
POTNÍ ŽLÁZY (*gll. sudoriferae*)

apokrinní (aromatické)

apocrine



po pubertě doplňují pot
–feromony, tuk, steroidy;
vliv hormonů



Kůže z axilly – velké potní žlázy (apokrinní, aromatické)

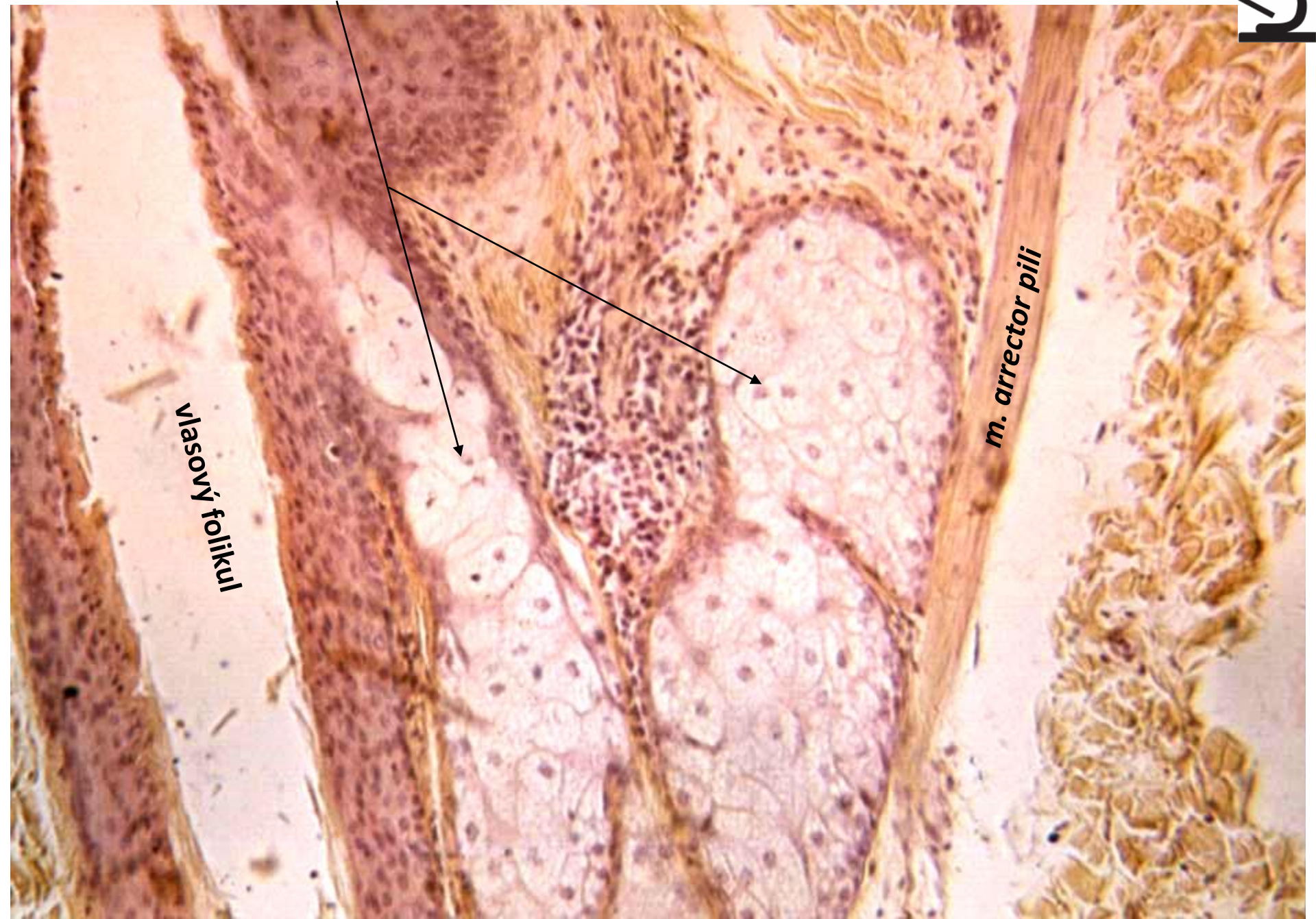


Mazová žláza (HEŠ)

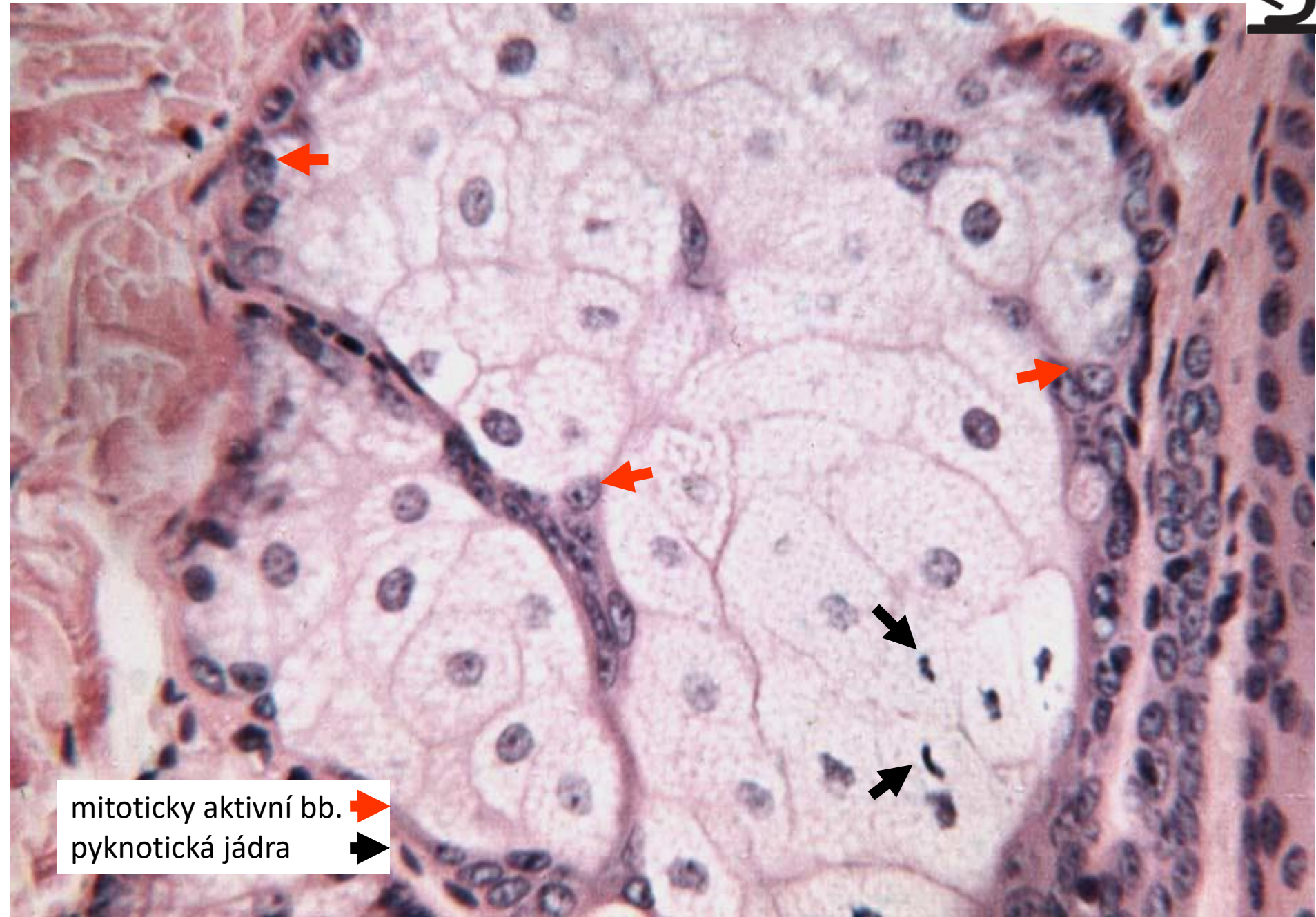




vlasový folikul

m. arrector pili

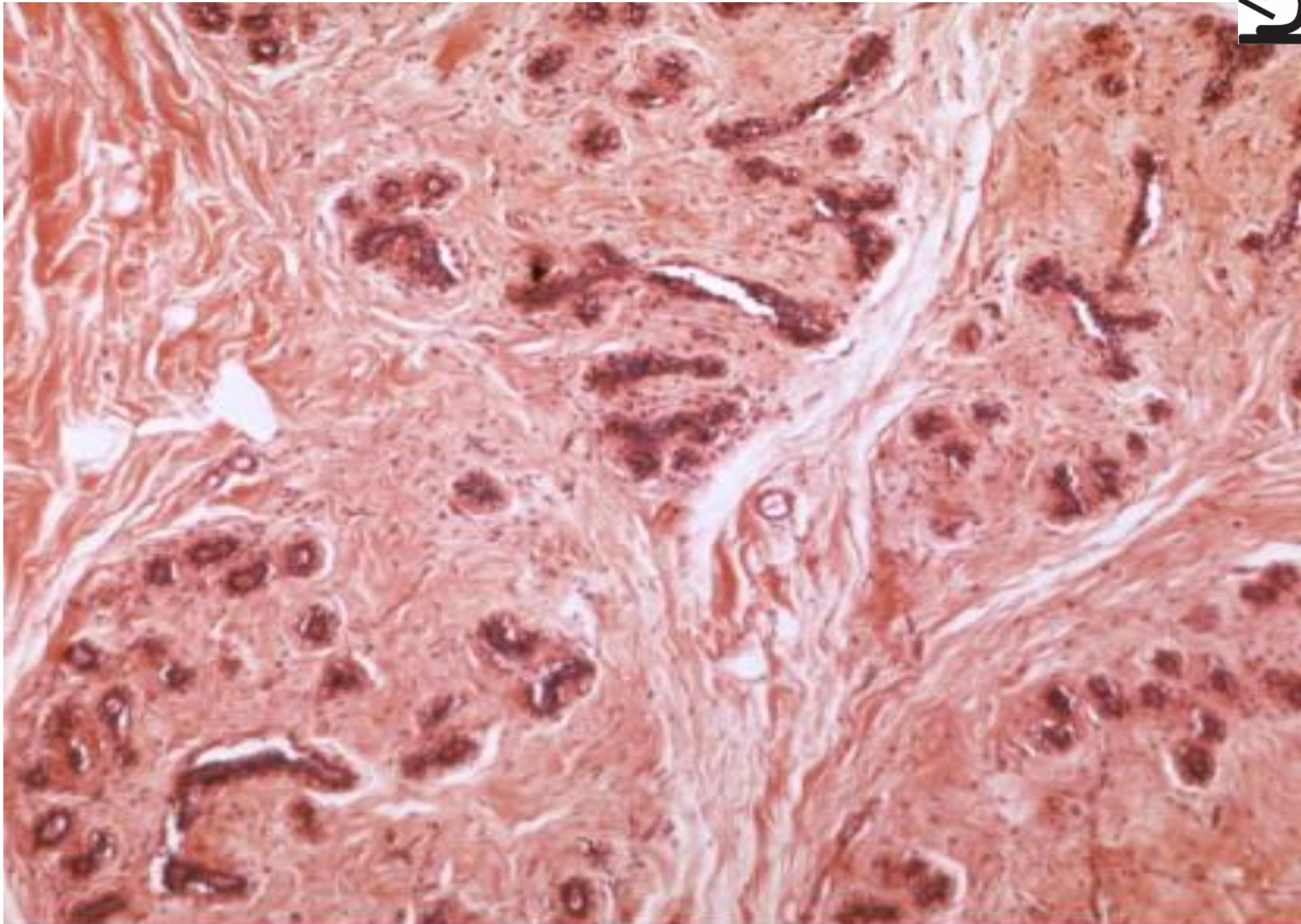


Mazová žláza (HE)

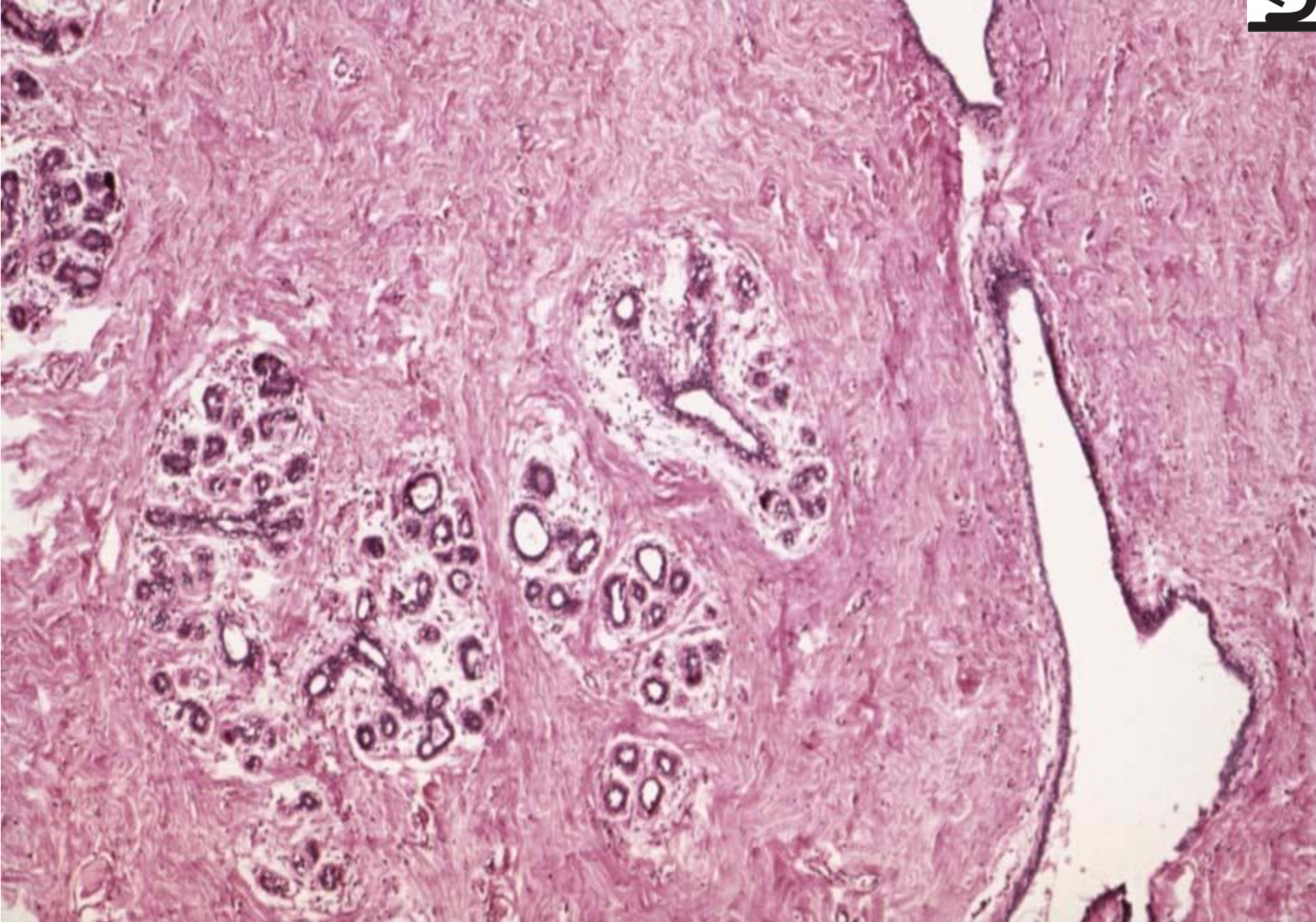


mitoticky aktivní bb. 
pyknotická jádra 

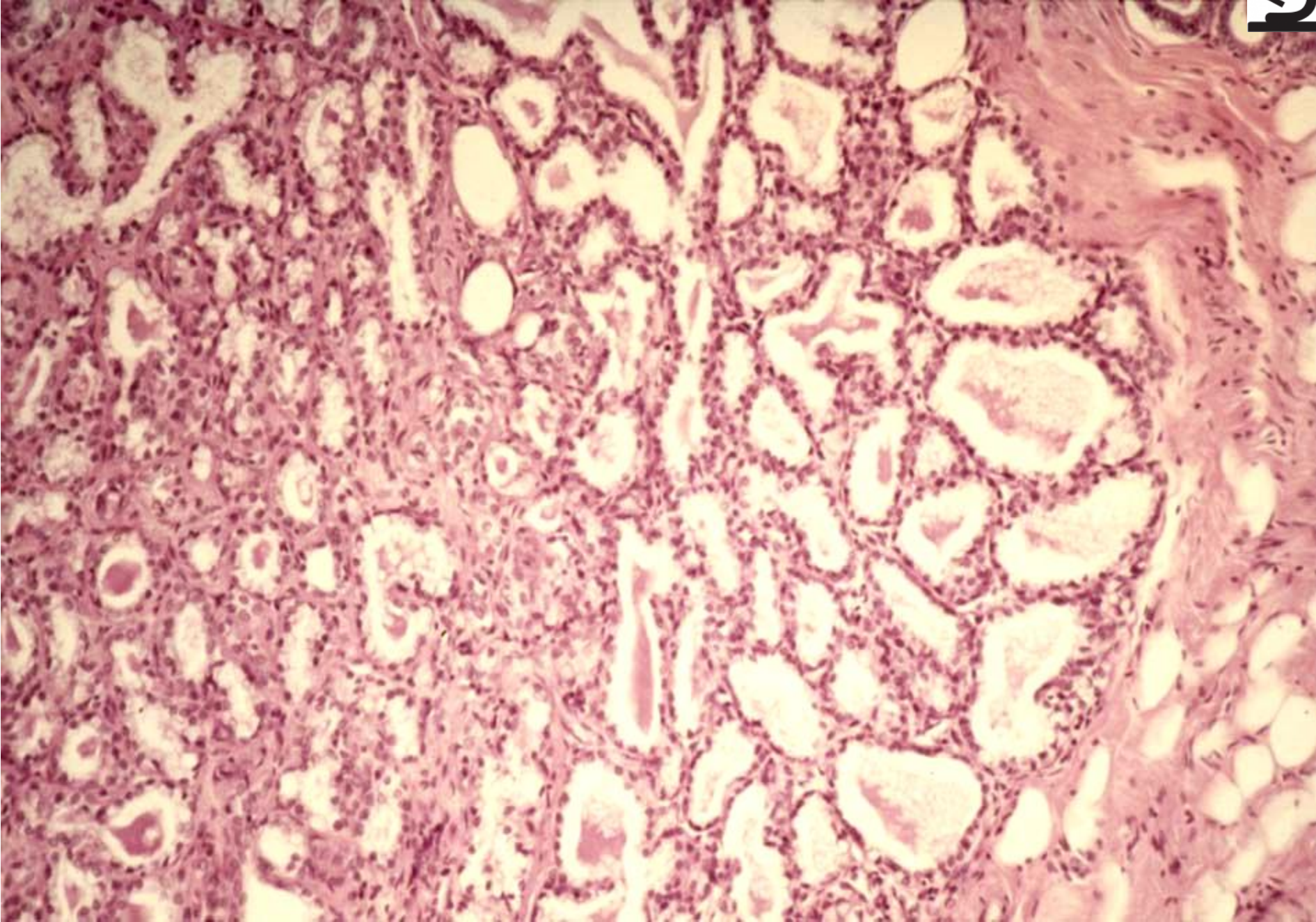
Mamma non lactans (HE)



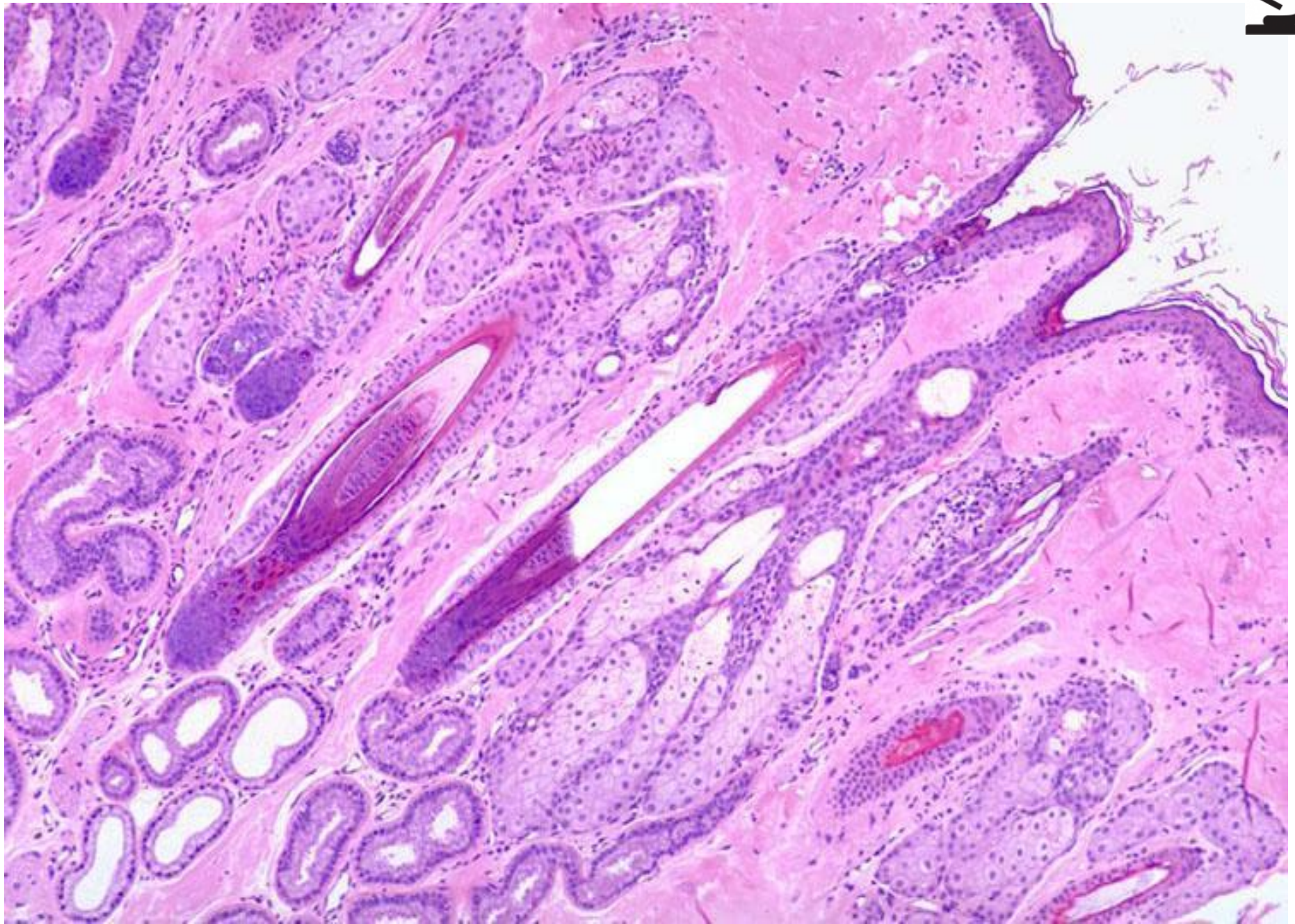
Mamma non lactans (HE)



Mamma lactans (HE)



Kůže z axily



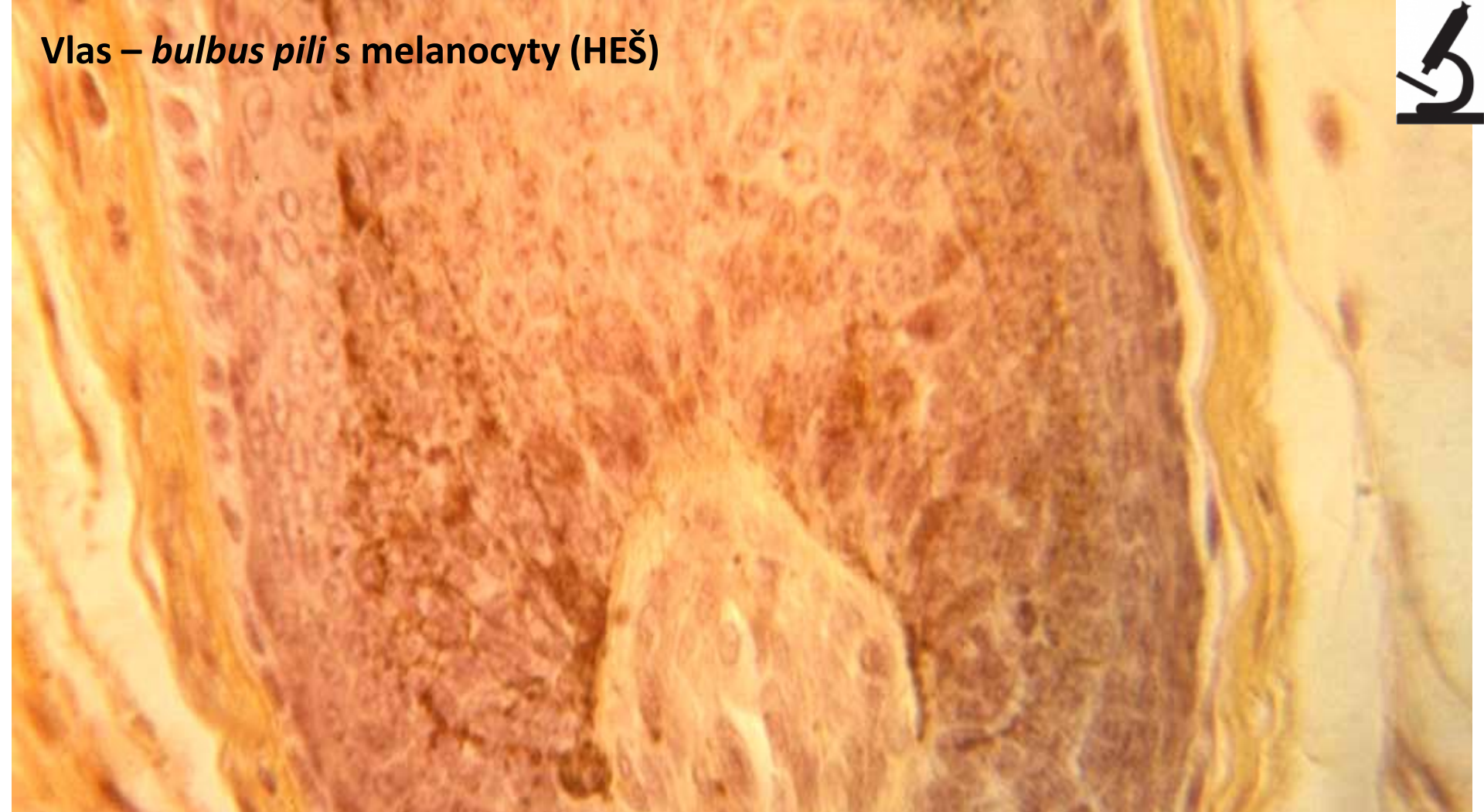
Vlas (HEŠ)



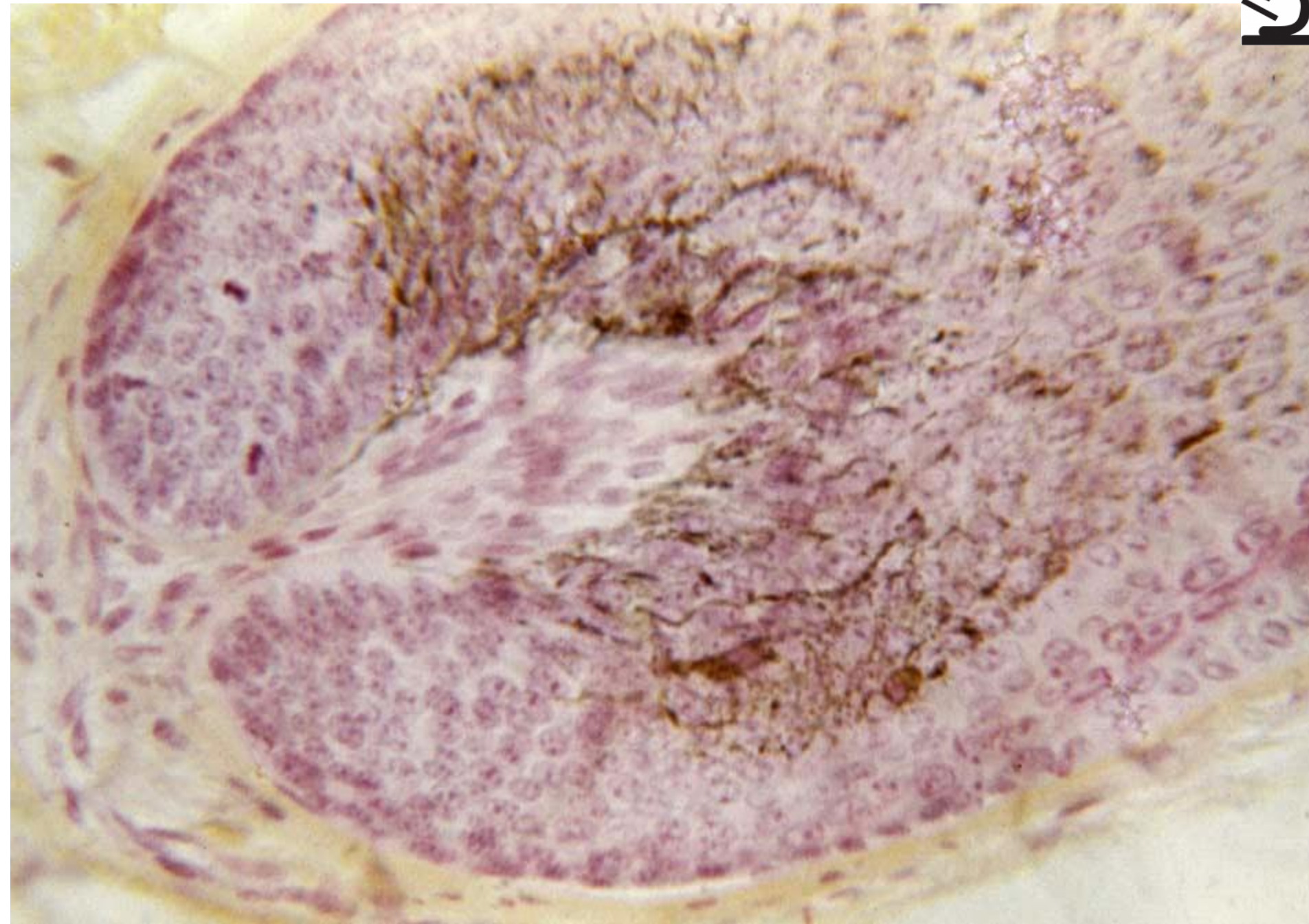
m. arrector pili



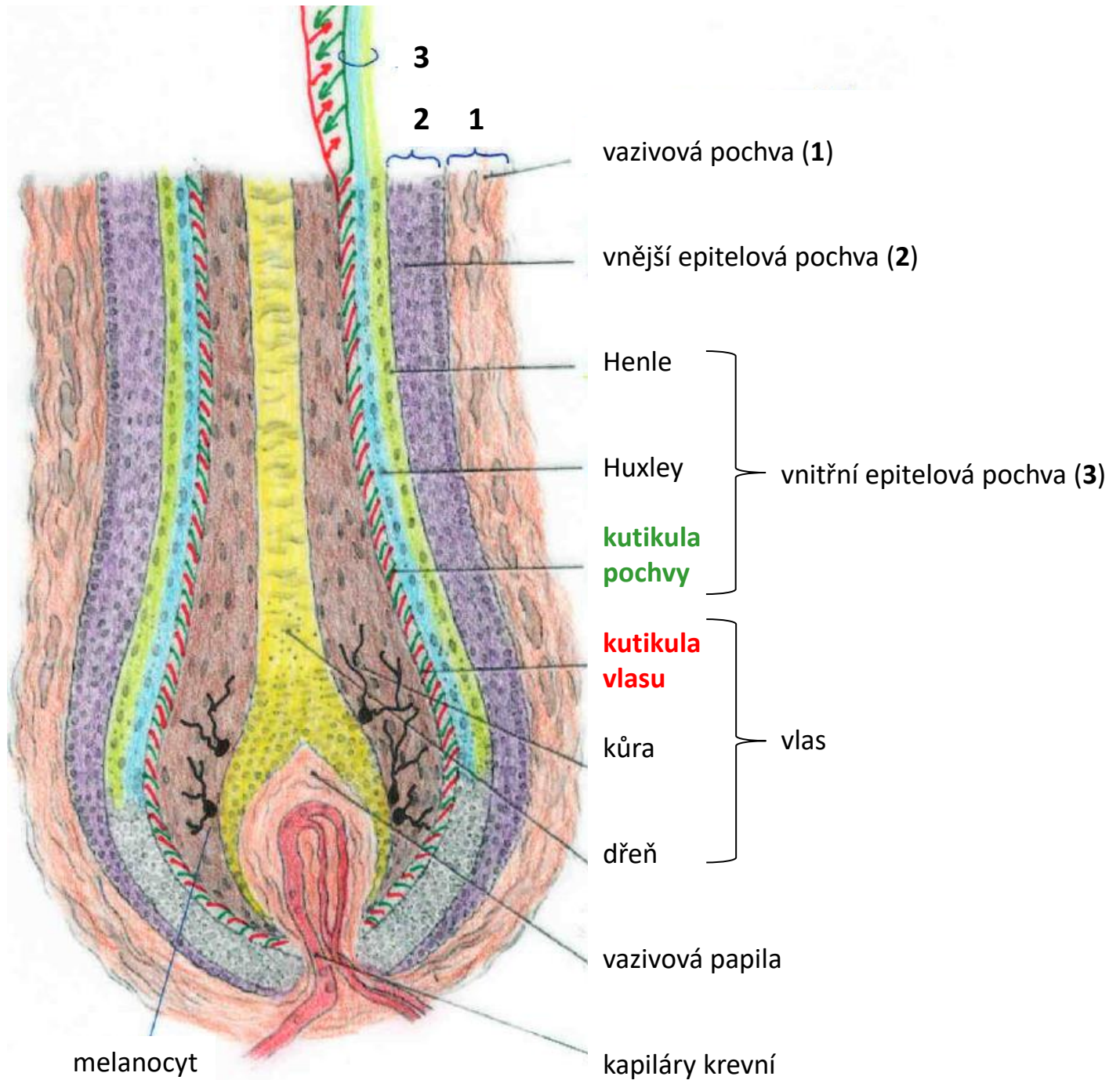
Vlas – *bulbus pili* s melanocyty (HEŠ)



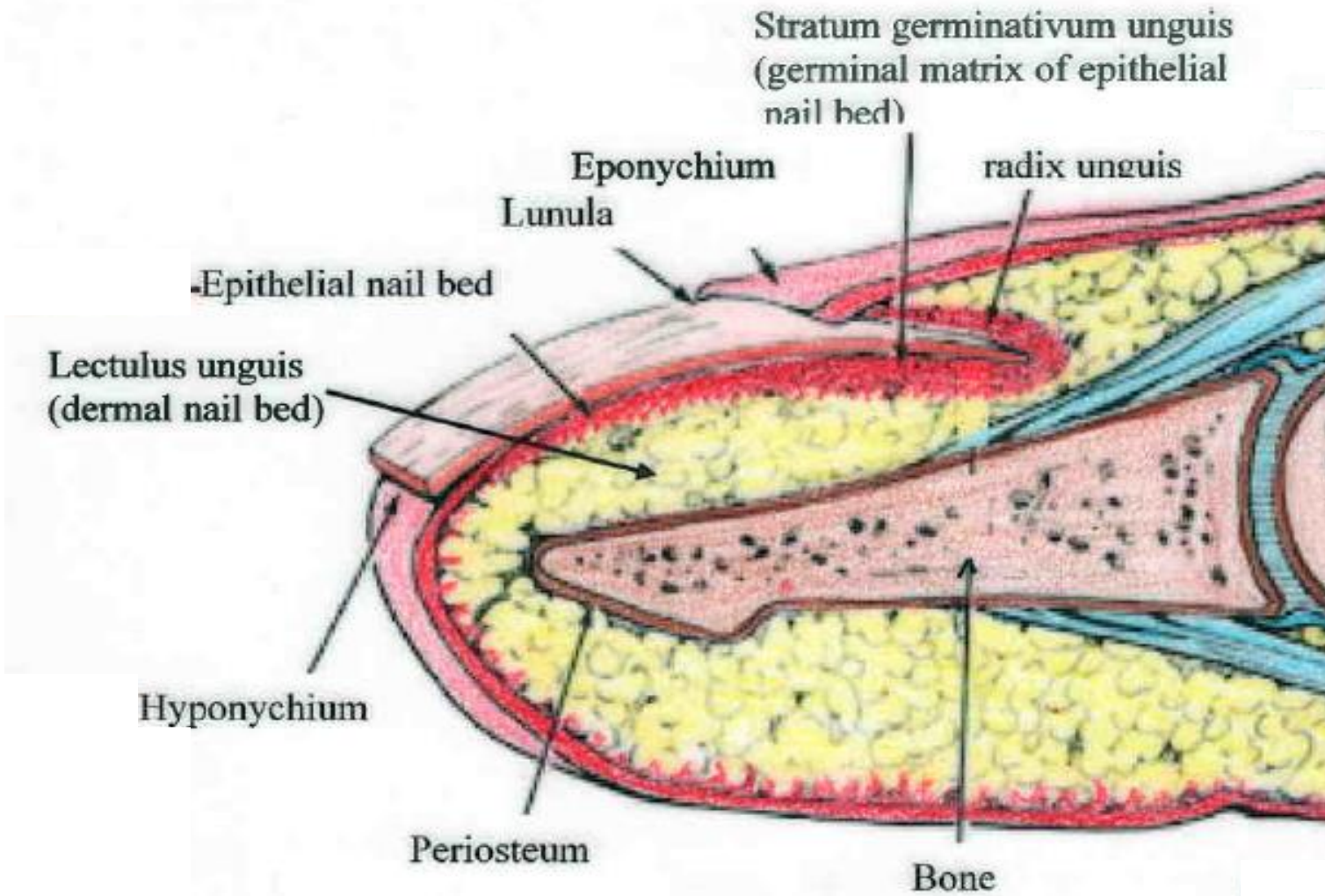
Vlas – *bulbus pili* s melanocyty, *papilla pili* (HEŠ)



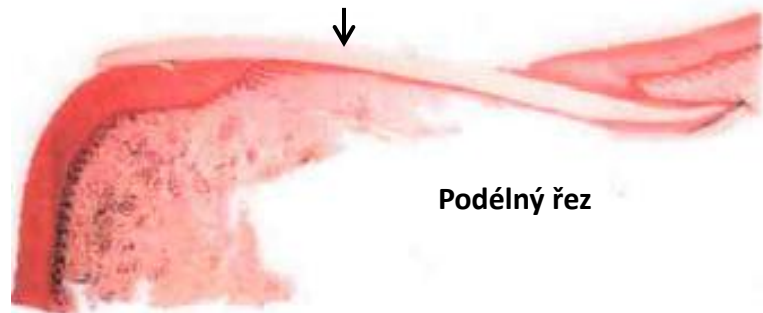
Vlas – Pilus



Nehet – Unguis – Onyx (řecky)



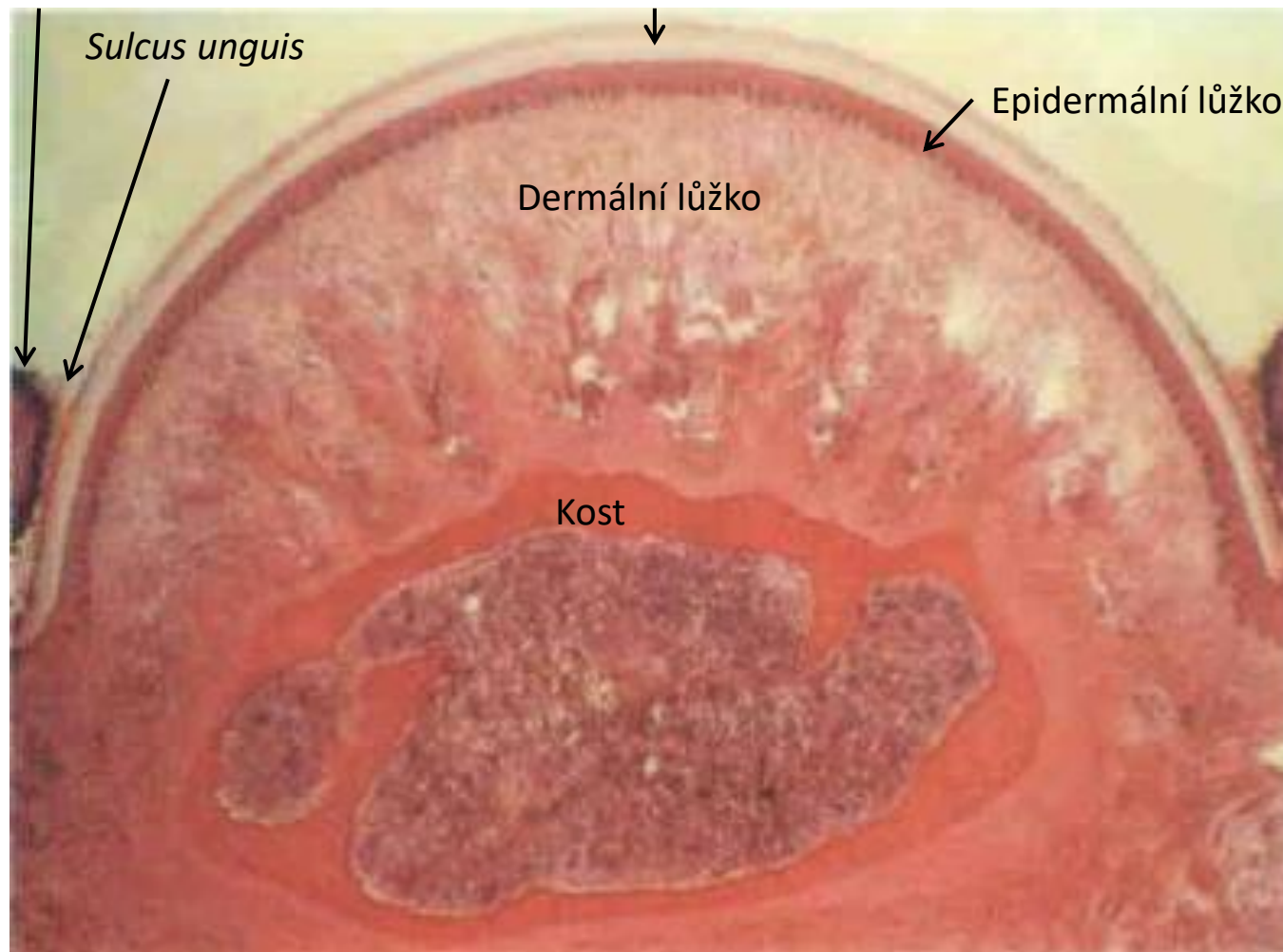
Nehet



Podélný řez

Vallum unguis

Nehtová ploténka



Sulcus unguis

Dermální lůžko

Epidermální lůžko

Kost

Příčný řez



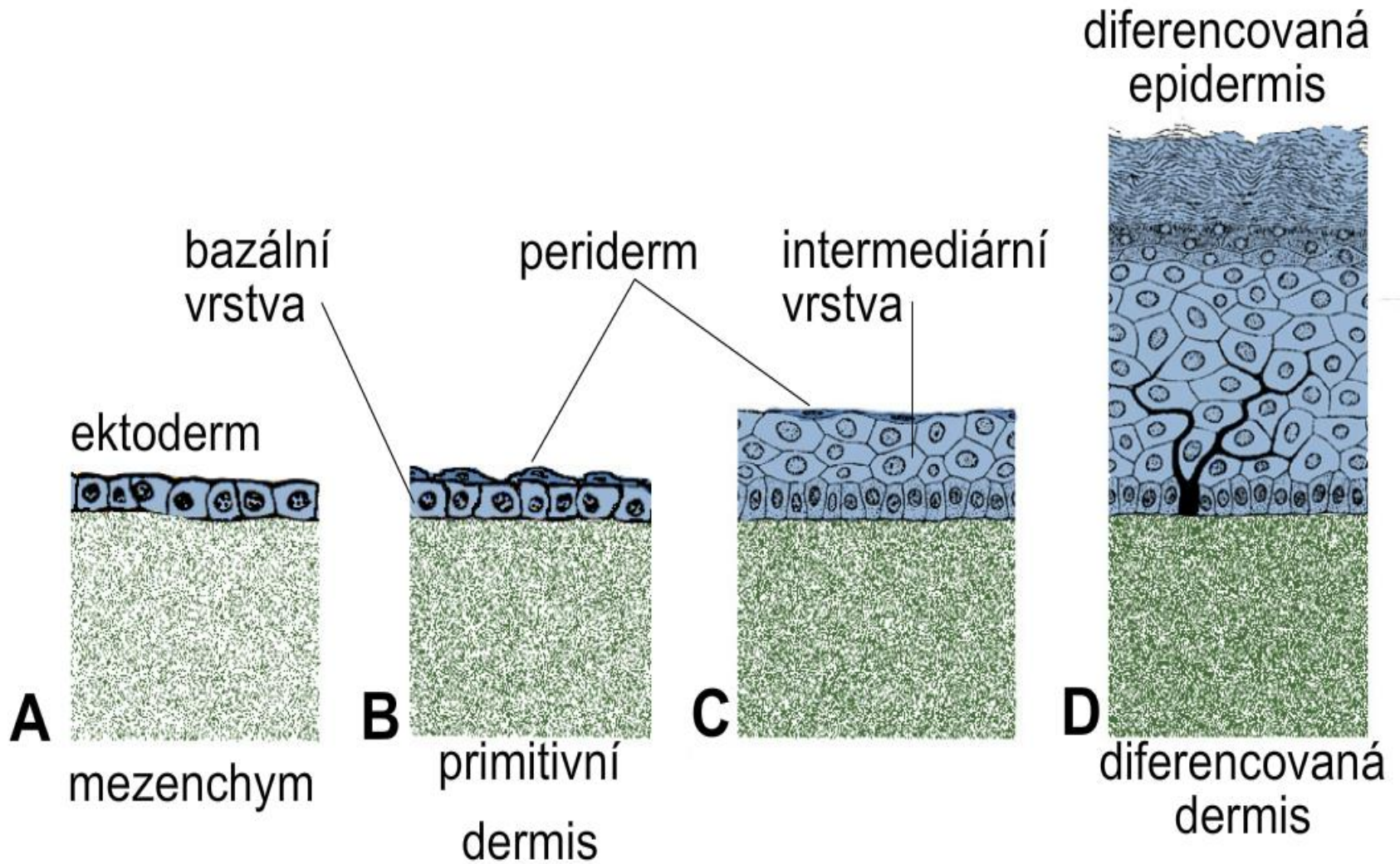
KŮŽE A KOŽNÍ ADNEXA



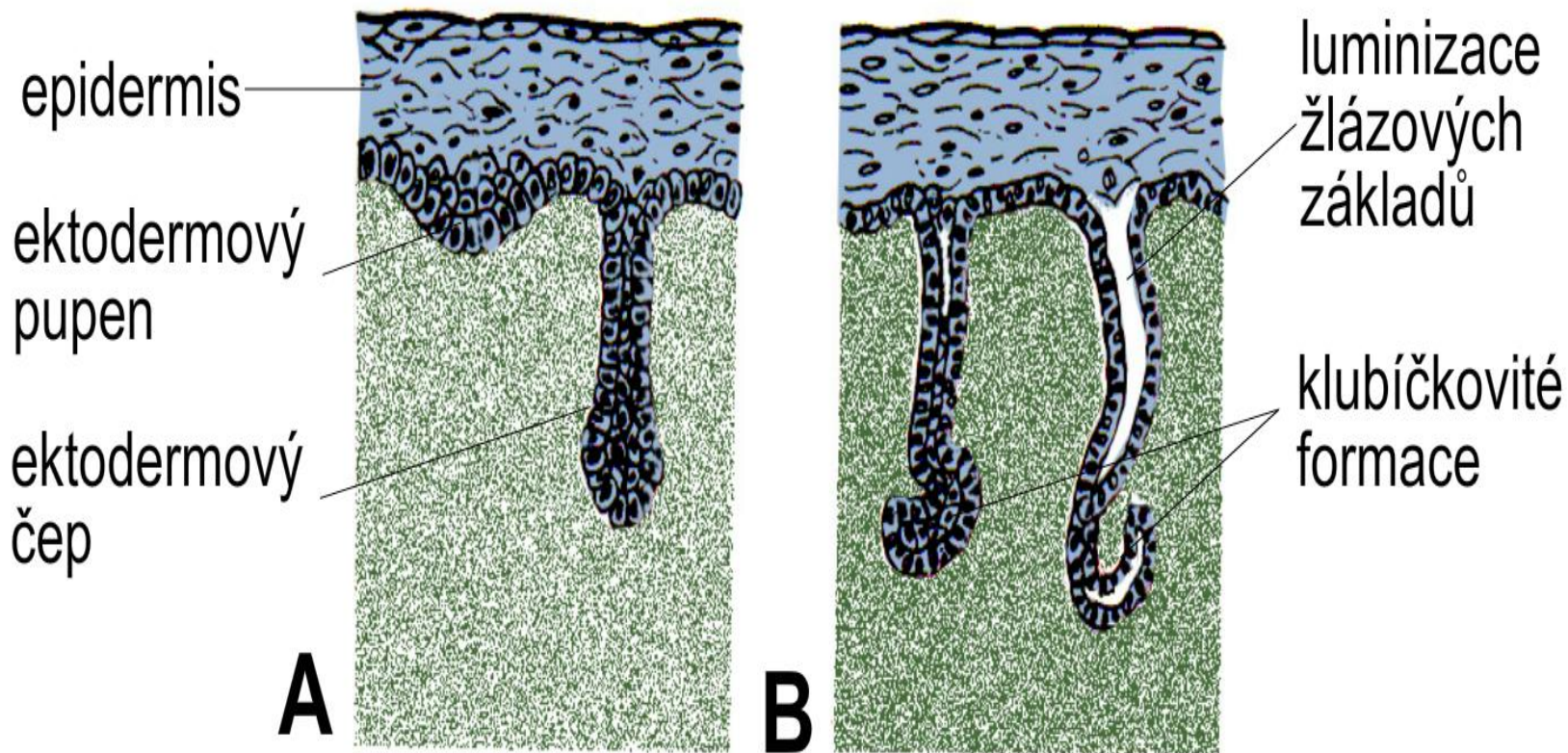
Preparáty:

- 69. Kůže z břicha prstu
- 70. Kůže z axilly
- 71. Kůže s vlasy
- 72. Nehet
- 73. *Mamma non-lactans*
- 74. *Mamma lactans*

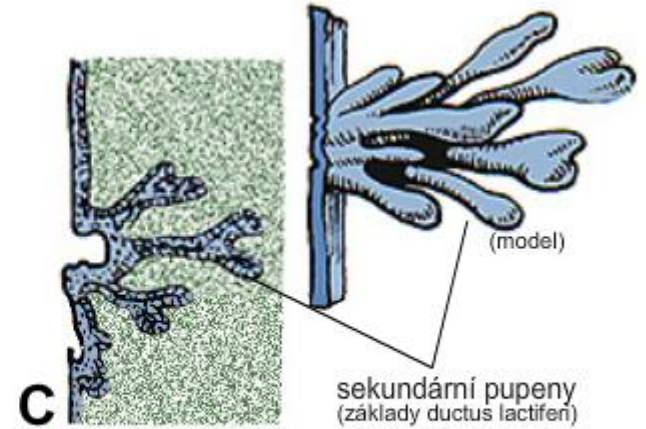
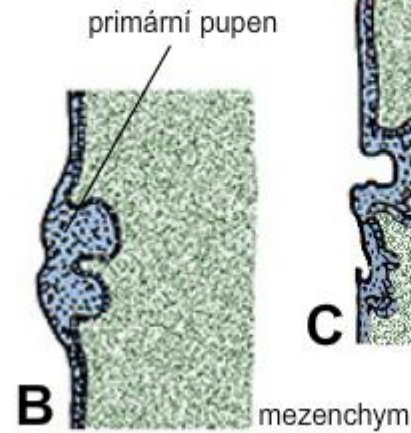
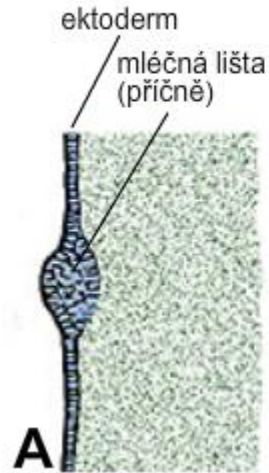
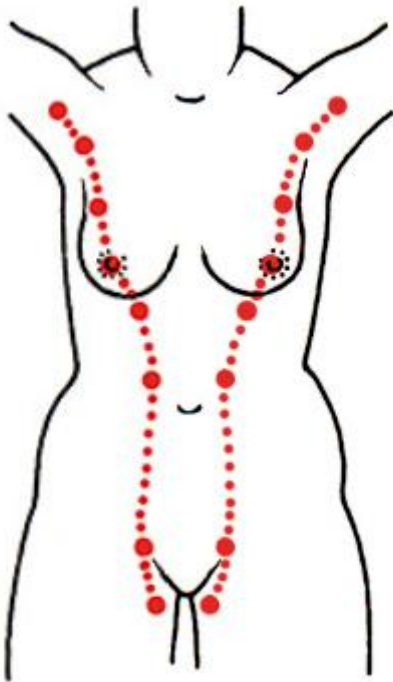
Vývoj epidermis a coria



Vývoj potních žláz



Vývoj mléčné lišty a mléčné žlázy



Vývoj vlasu a mazové žlázy

