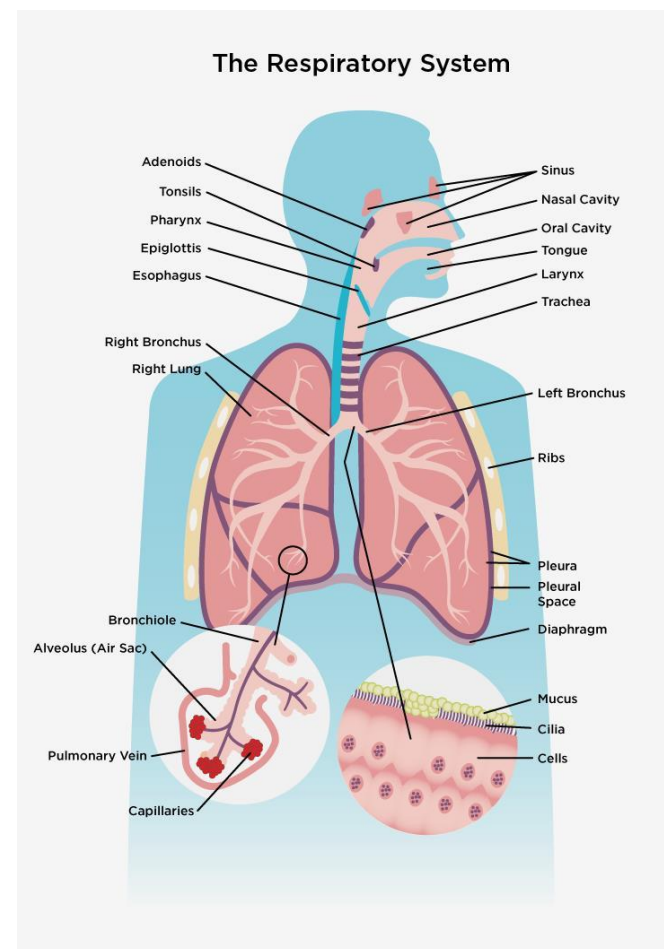




DÝCHACÍ SYSTÉM

- Dýchací cesty
 - Dutina nosní (concha nasi)
 - Pharynx
 - Larynx
 - Trachea
 - Bronchy
- Plíce

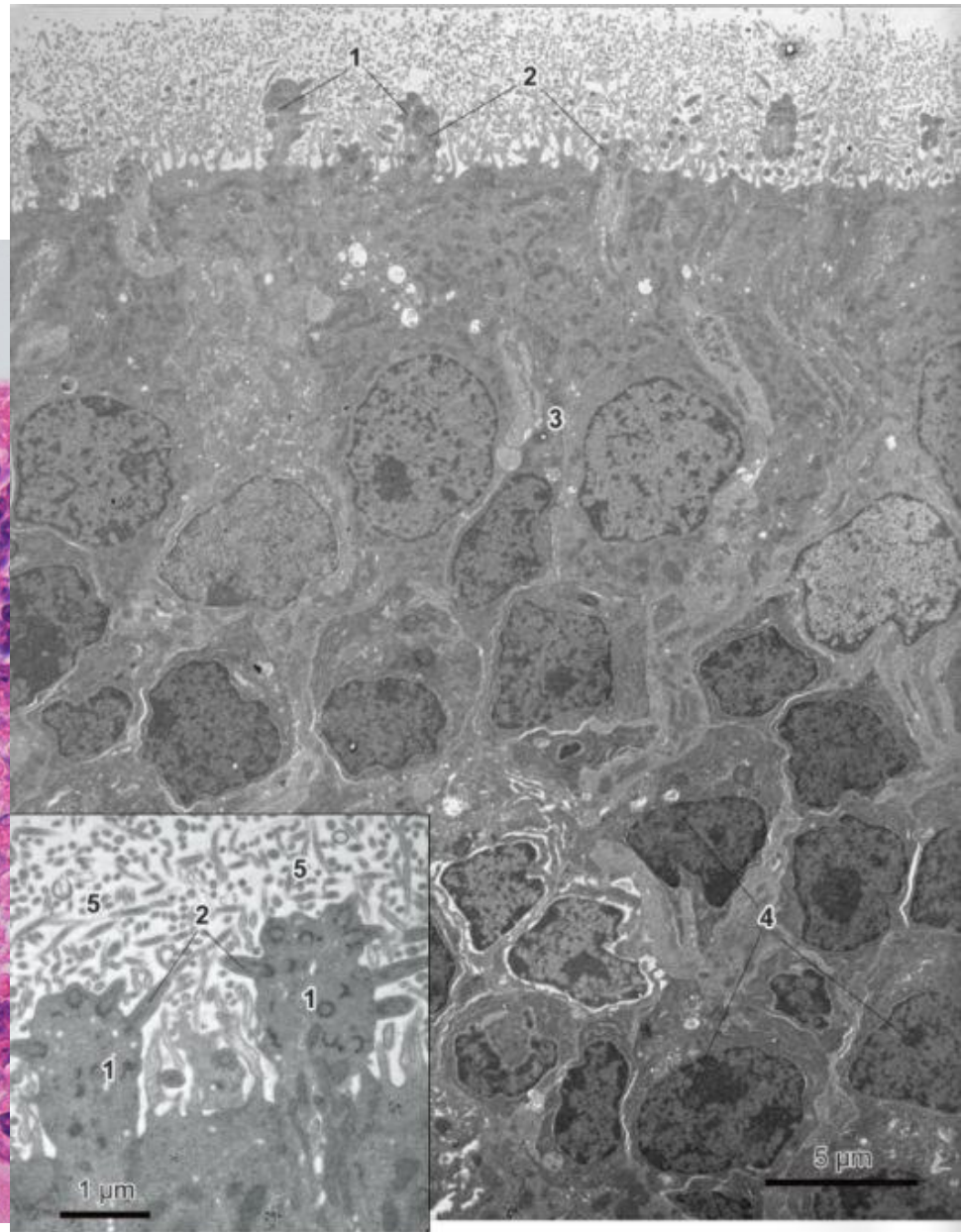
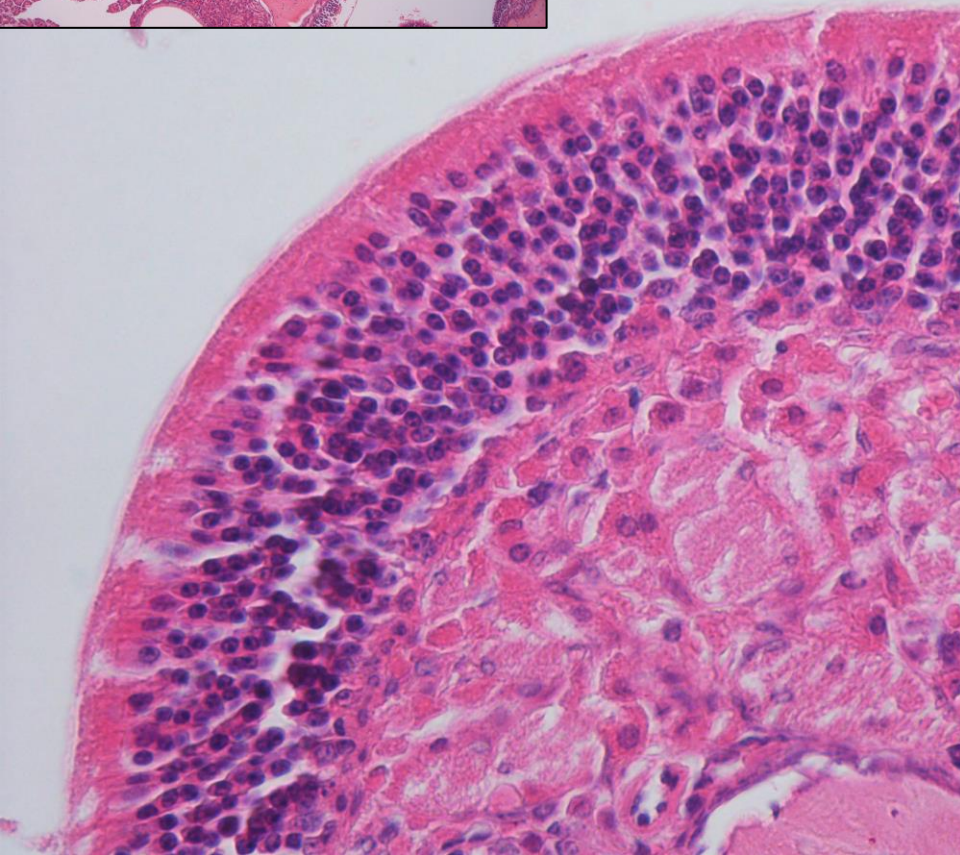


Concha nasi

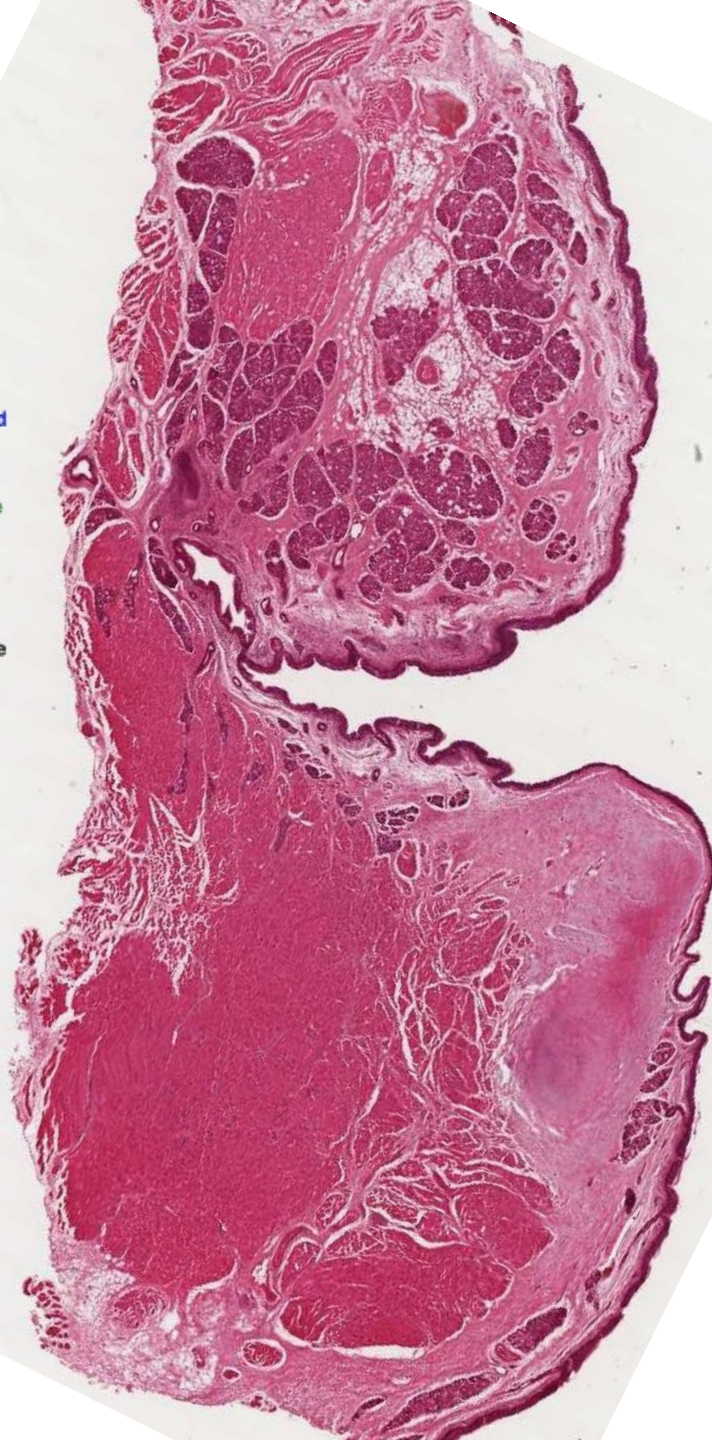
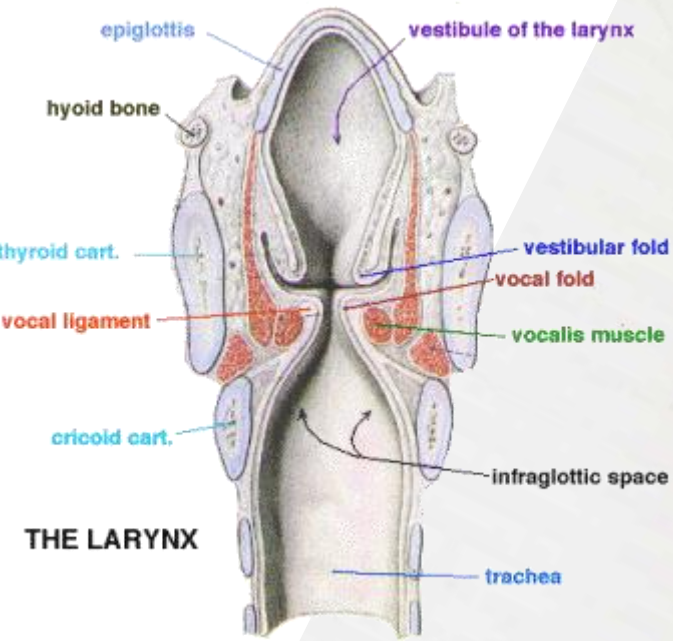
sliznice (tunica mucosa)



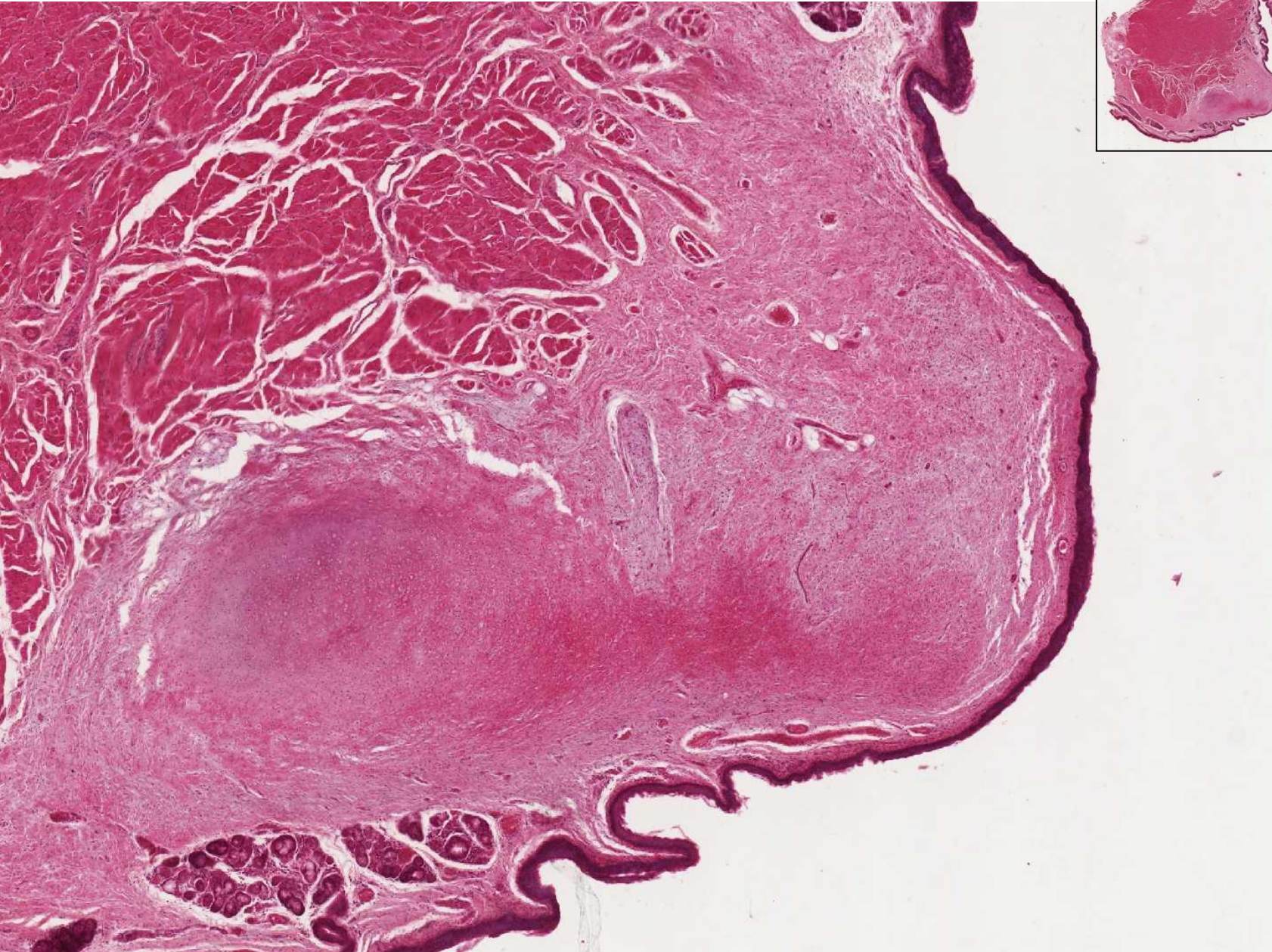
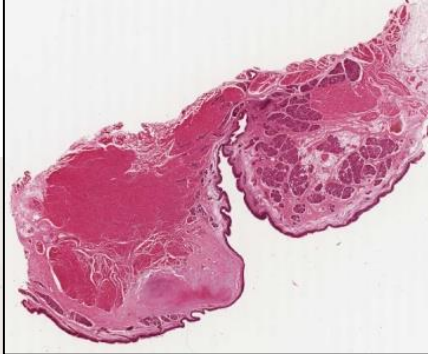
Concha nasi – smyslový epitel (myš)



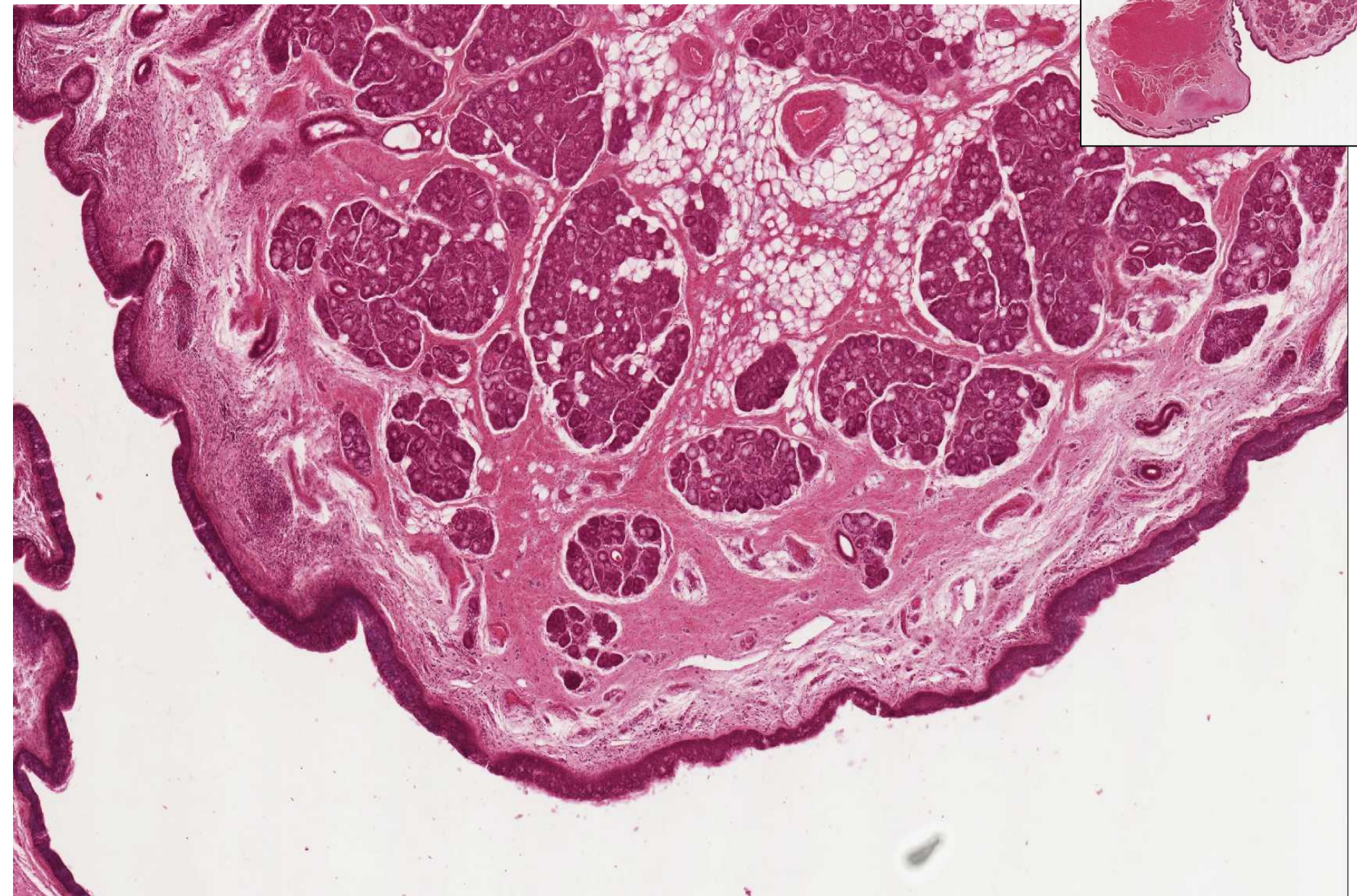
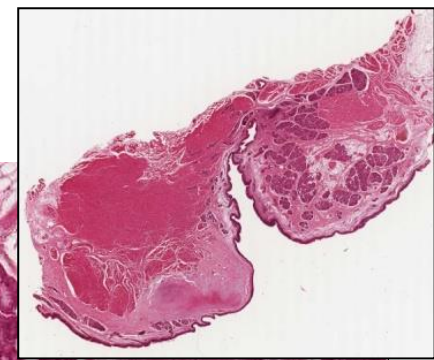
Larynx



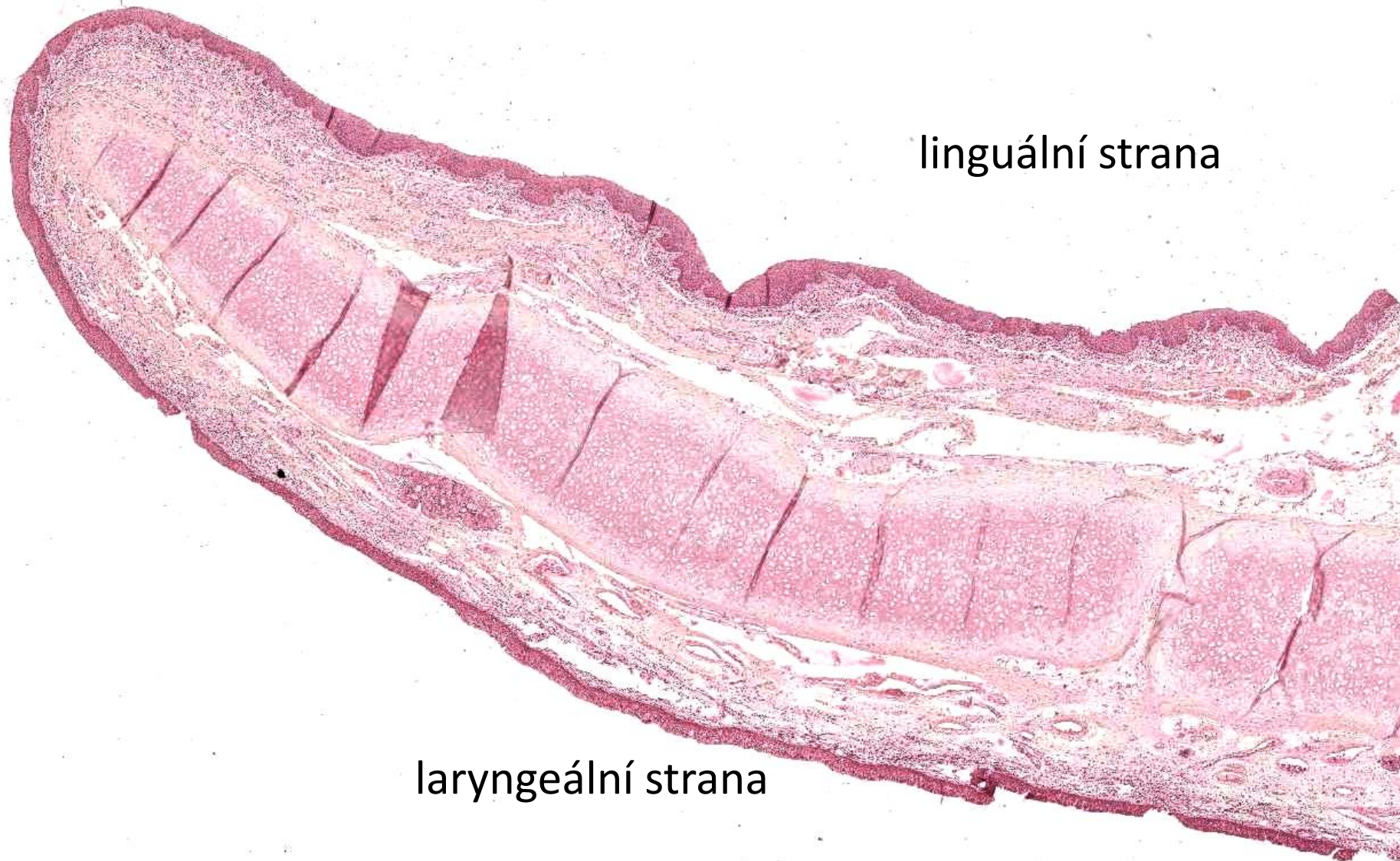
Larynx – plica vocalis



Larynx – plica ventricularis



Epiglottis



linguální strana

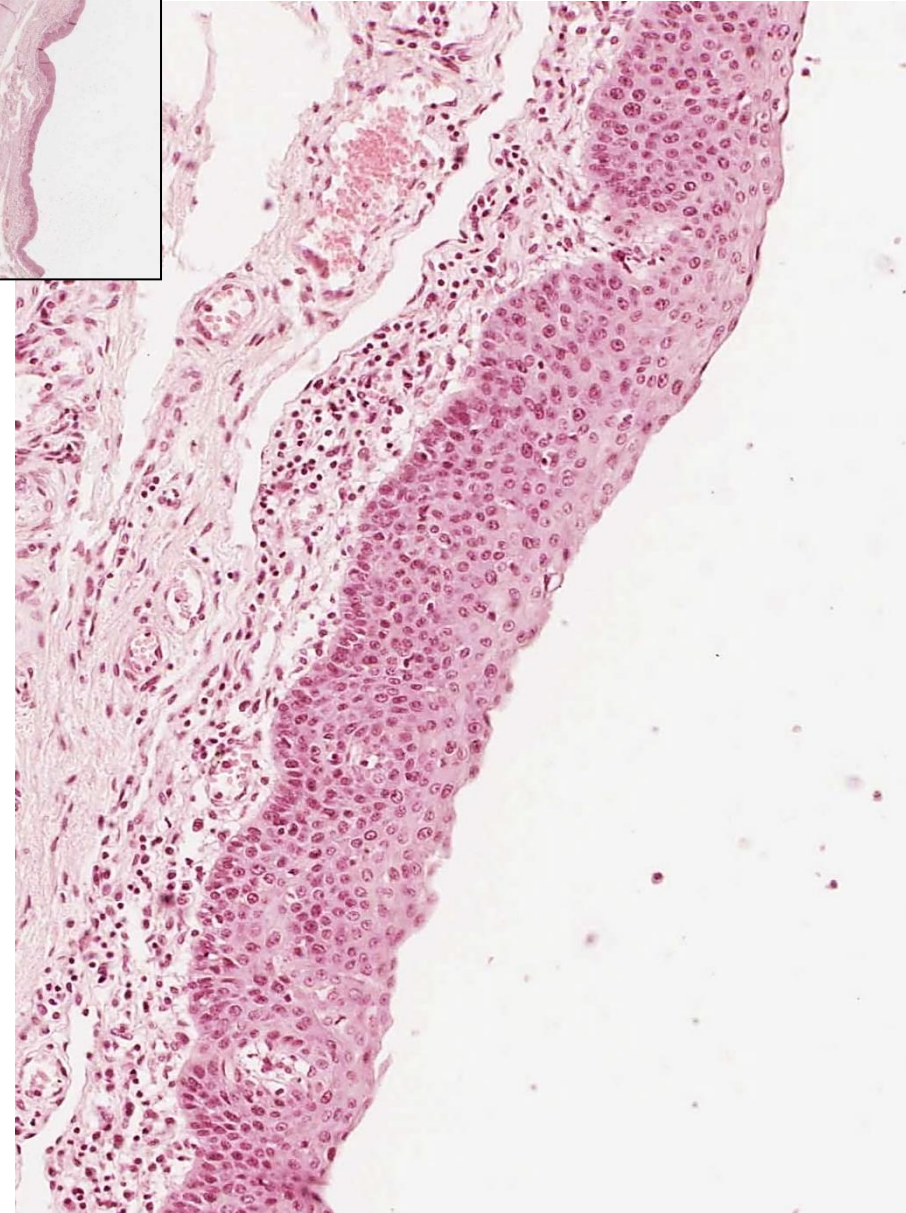
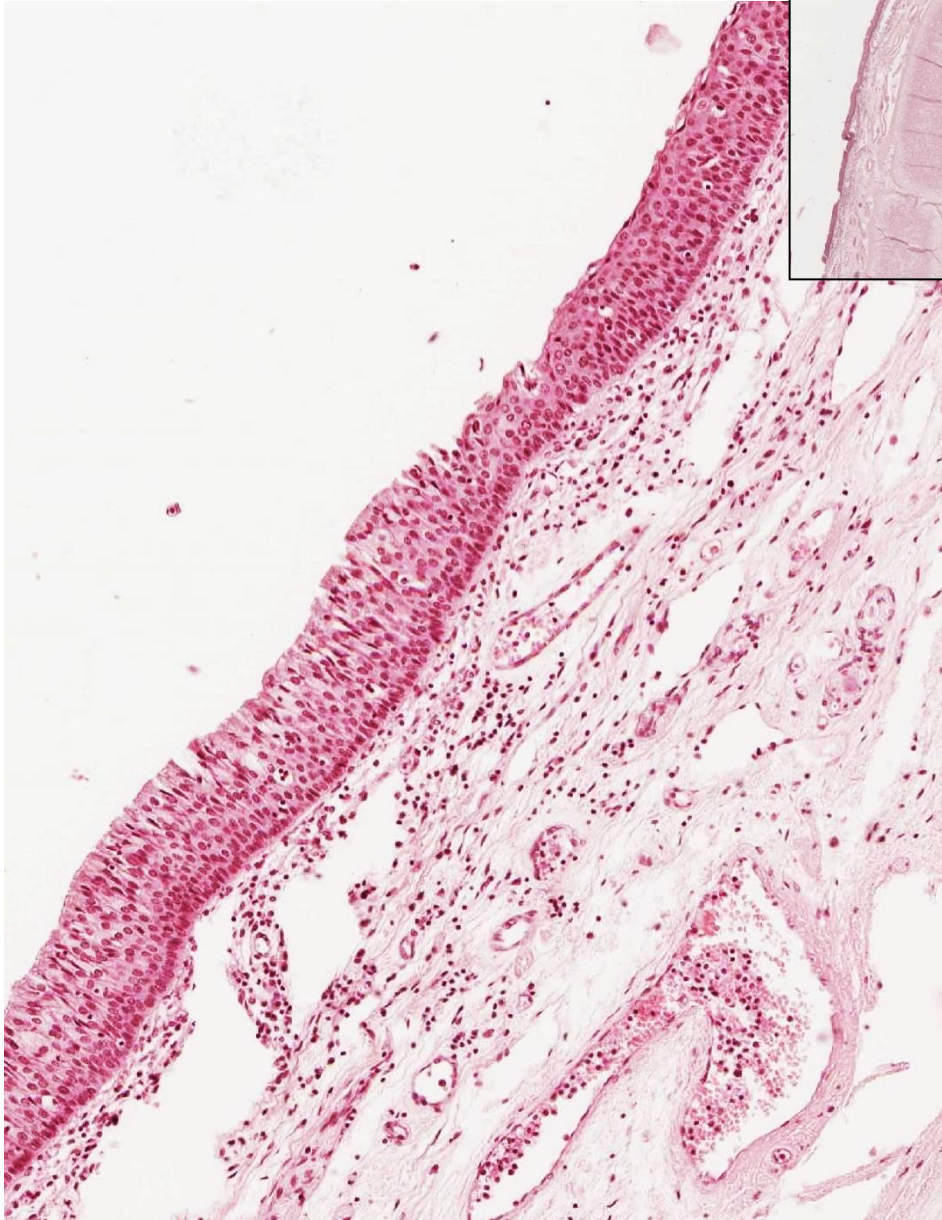
laryngeální strana

Epiglottis

laryngeální strana



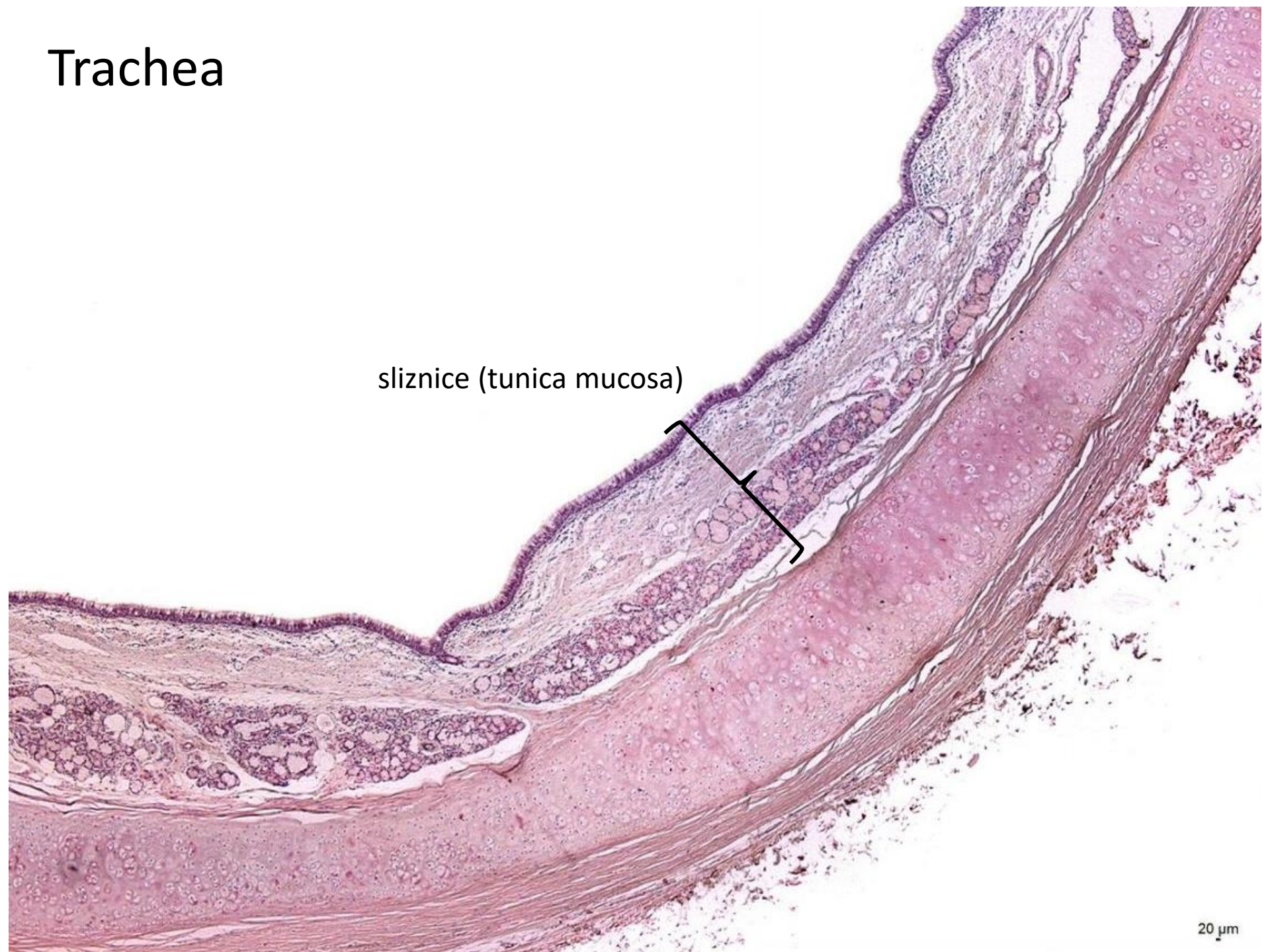
linguální strana



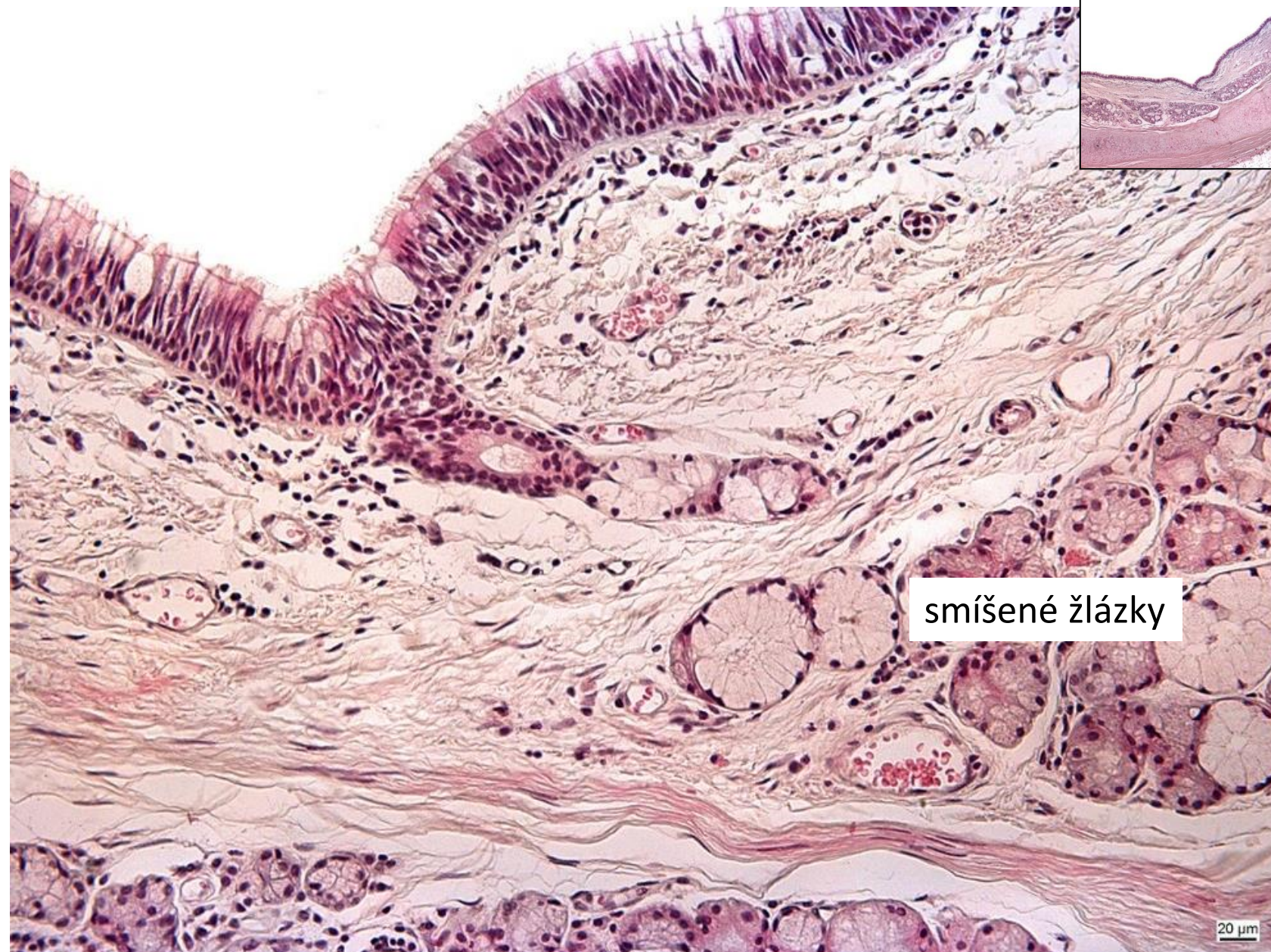
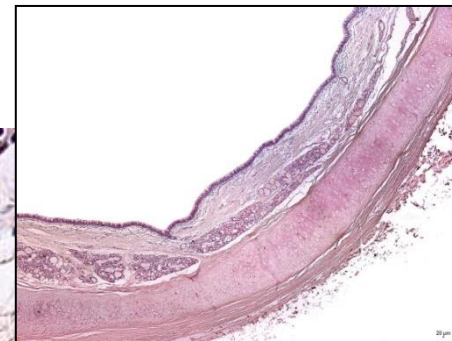
Trachea

sliznice (tunica mucosa)

20 μ m



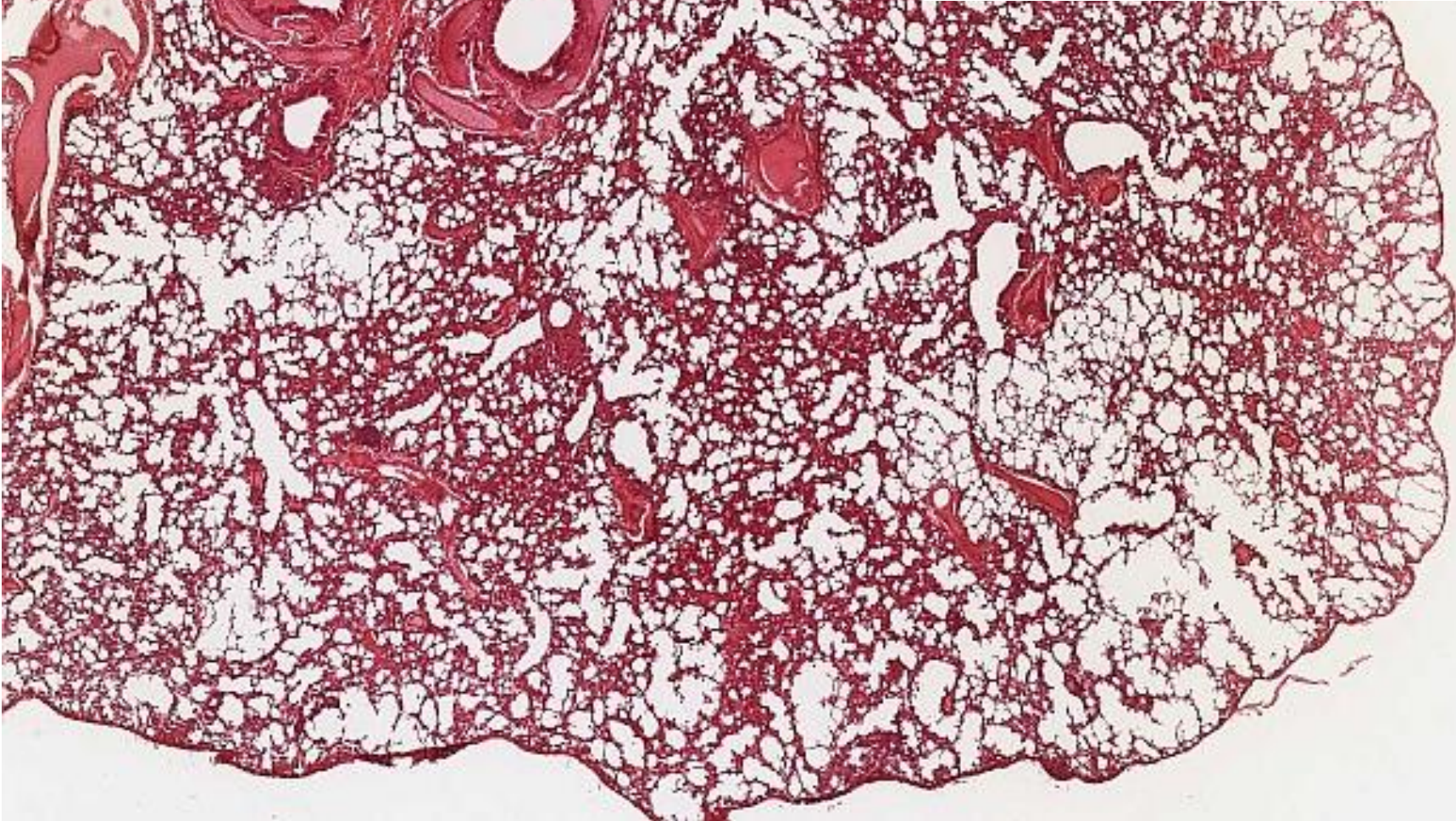
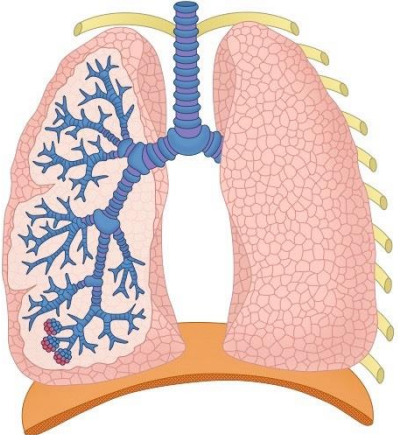
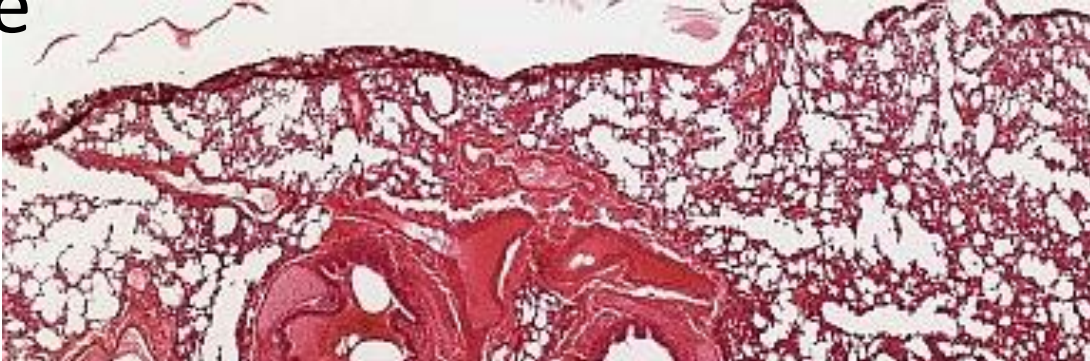
Trachea - sliznice



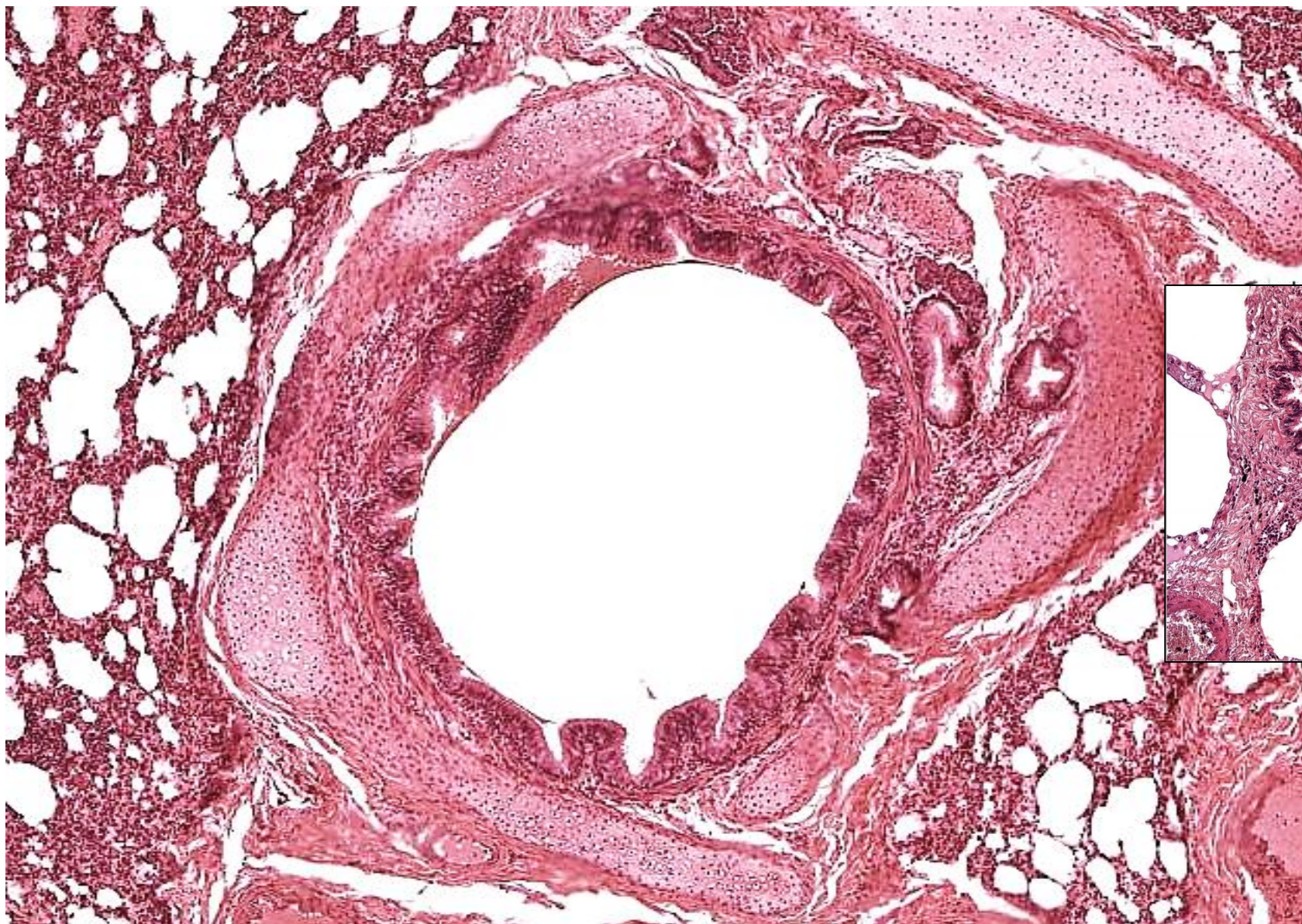
smíšené žlázy

20 μ m

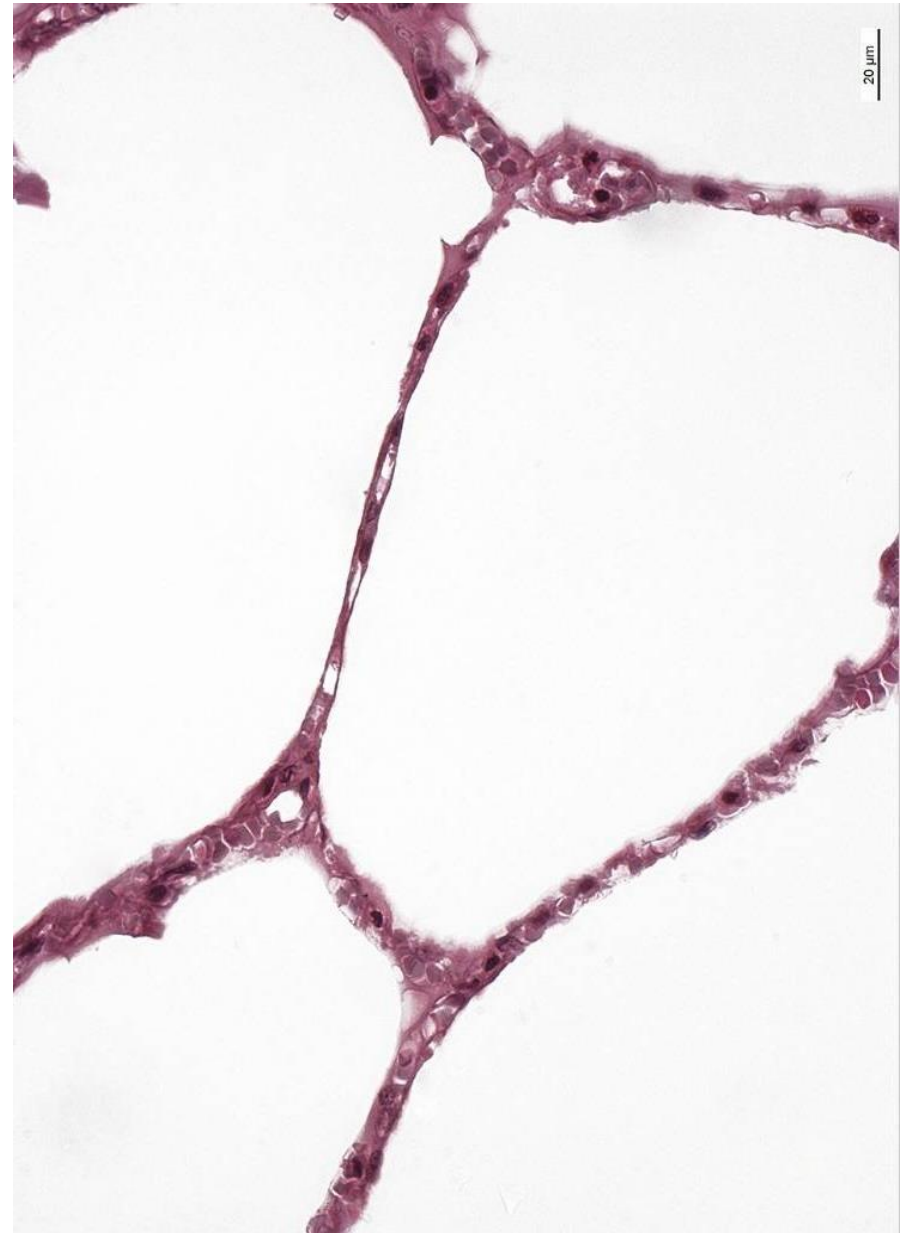
Plíce



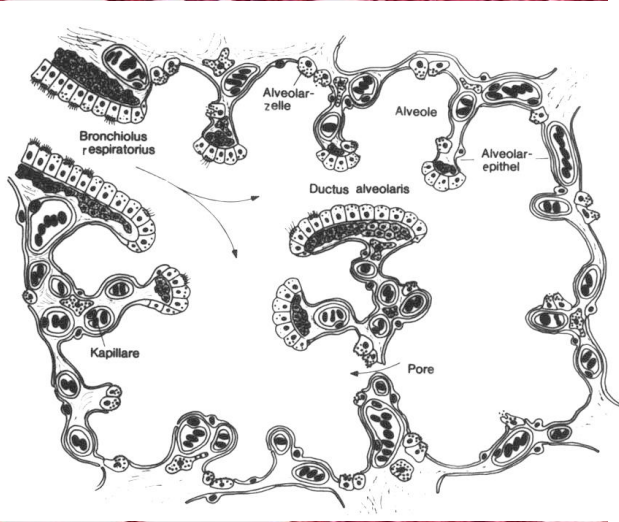
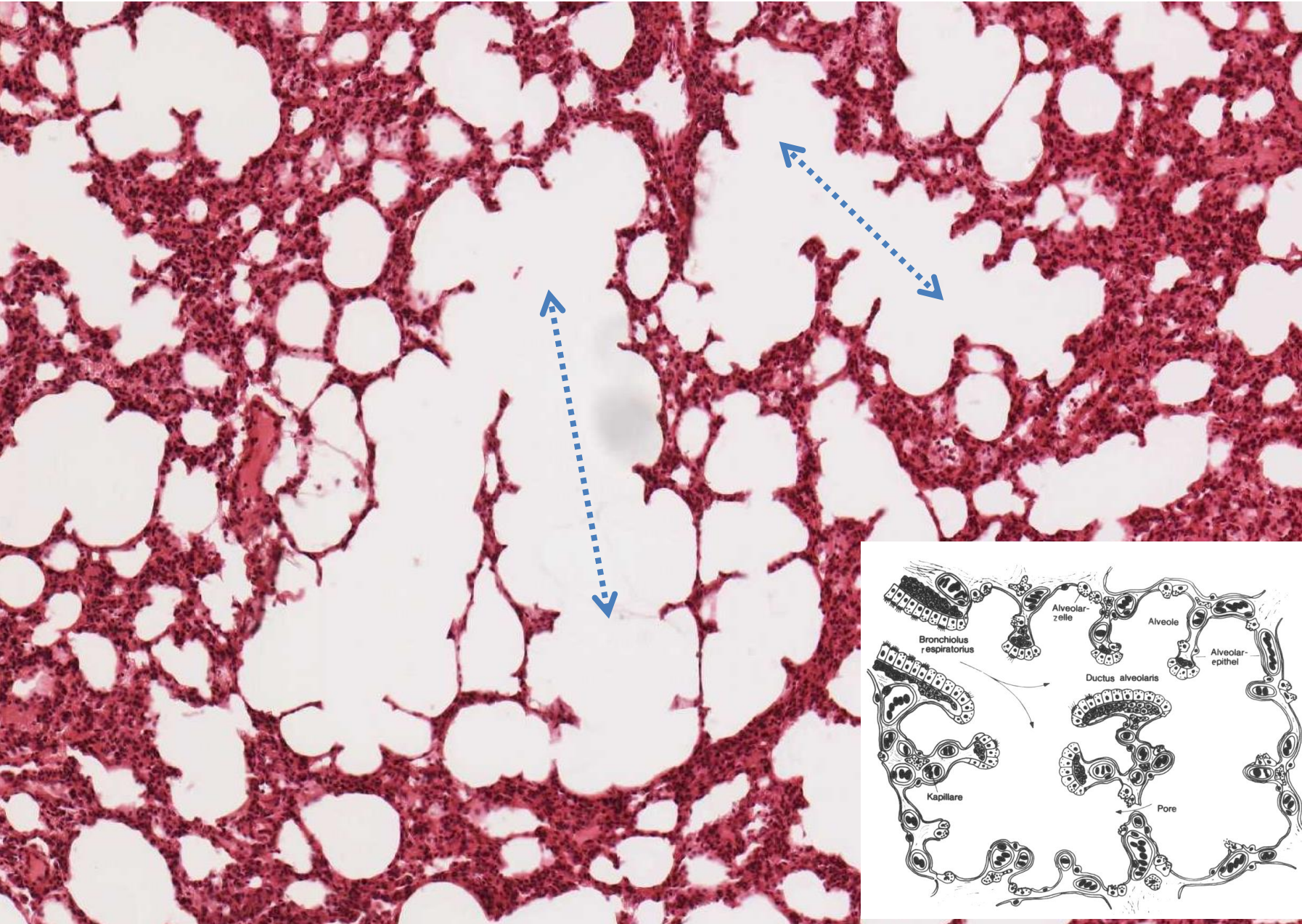
Intrapulmonální bronchus / bronchiolus



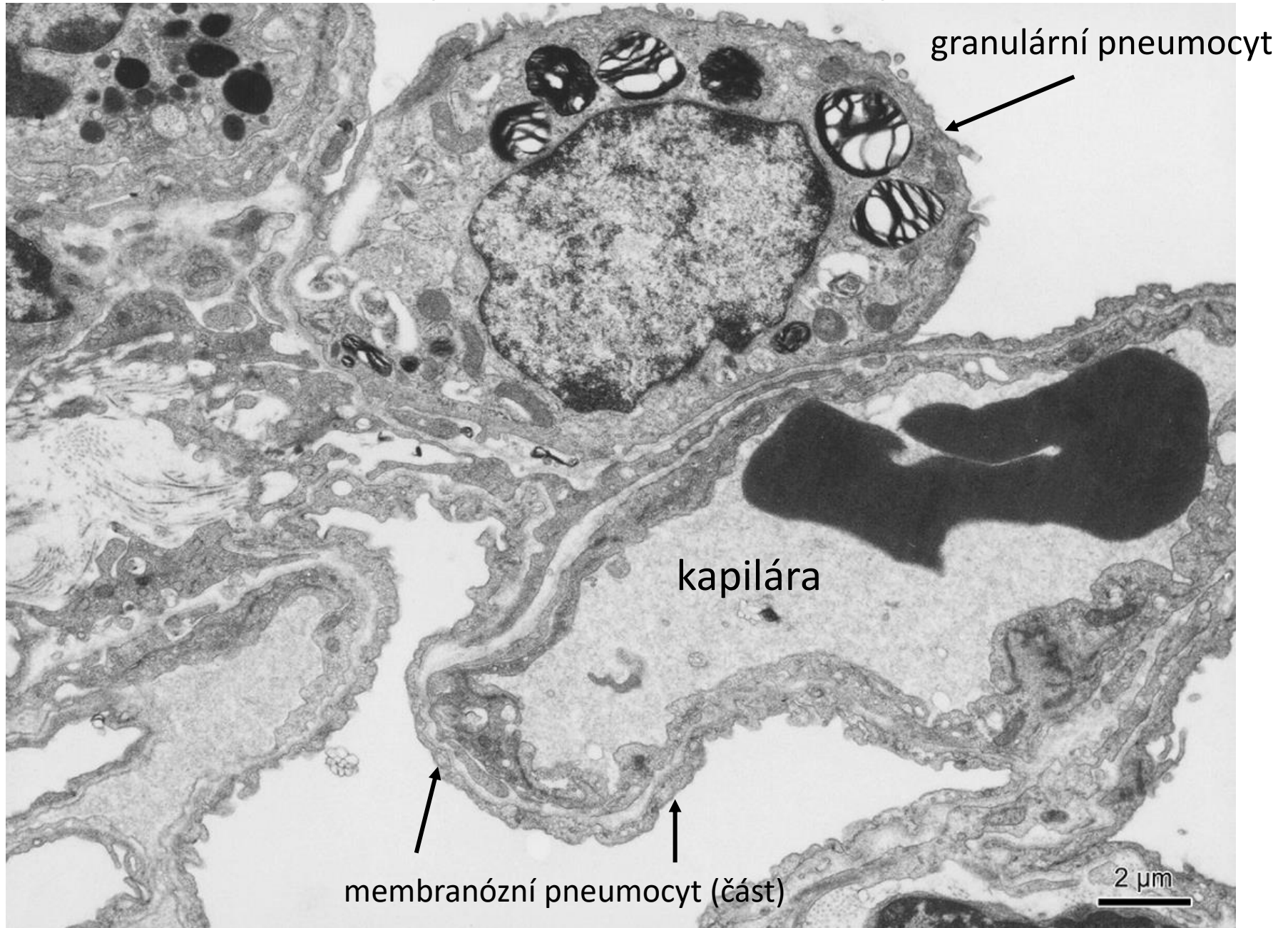
Terminální bronchiolus / alveoly



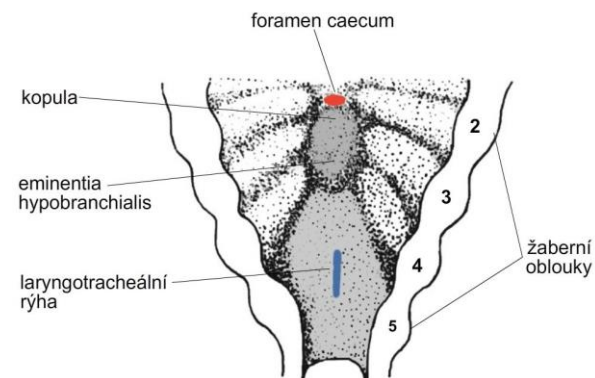
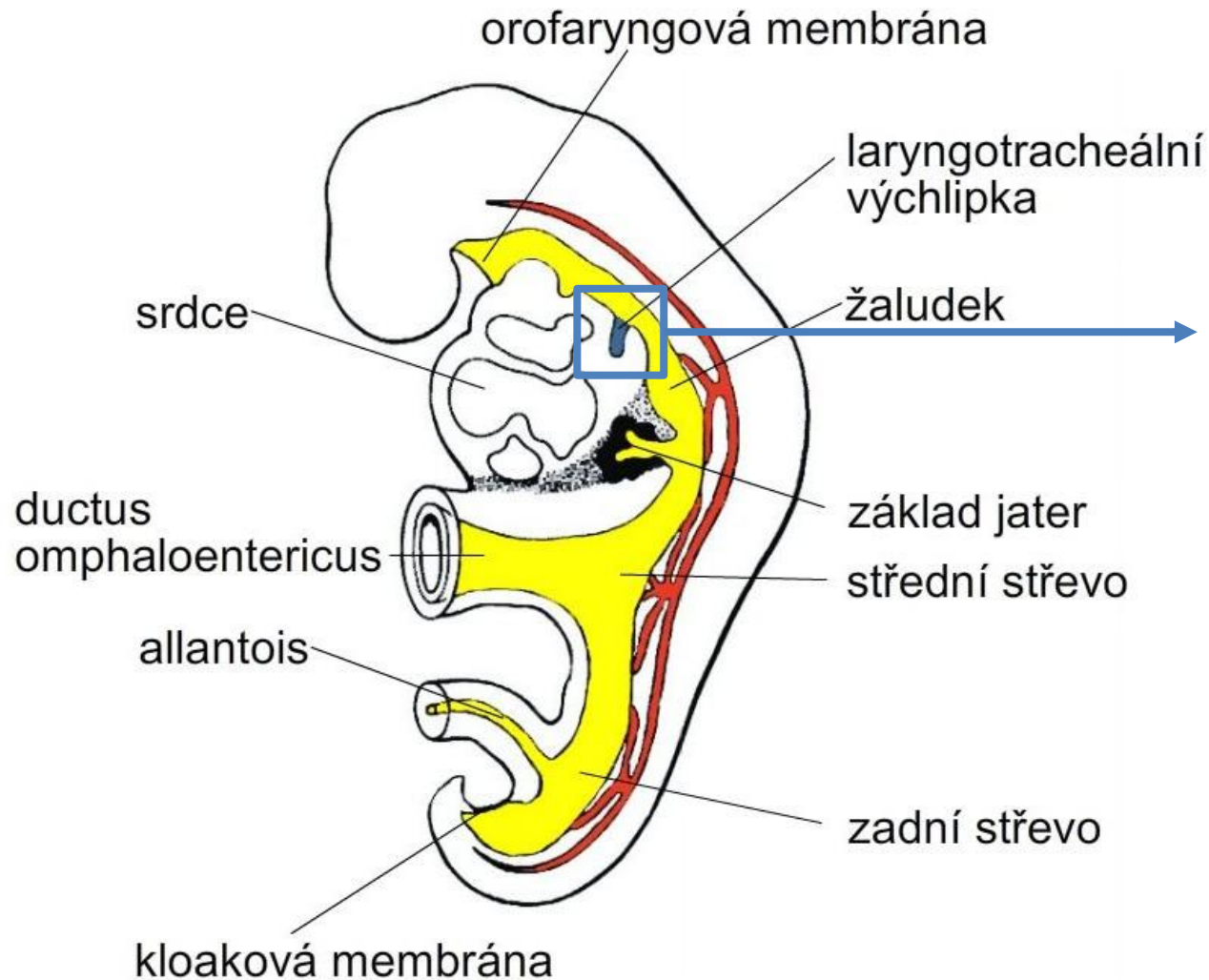
Ductus alveolaris

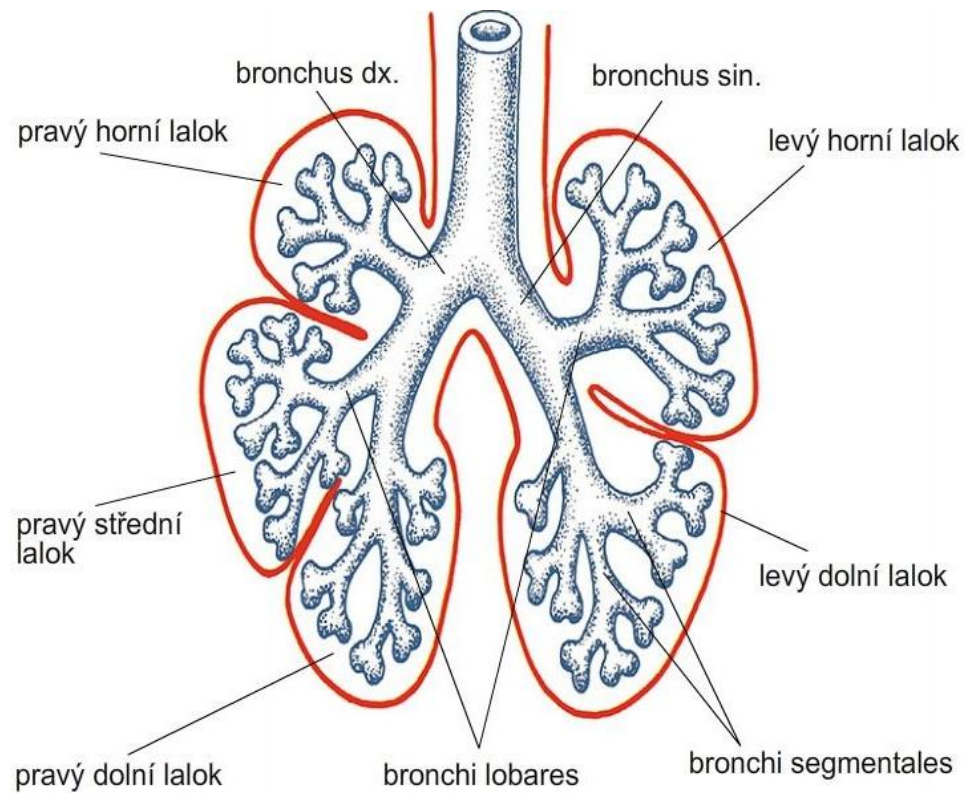
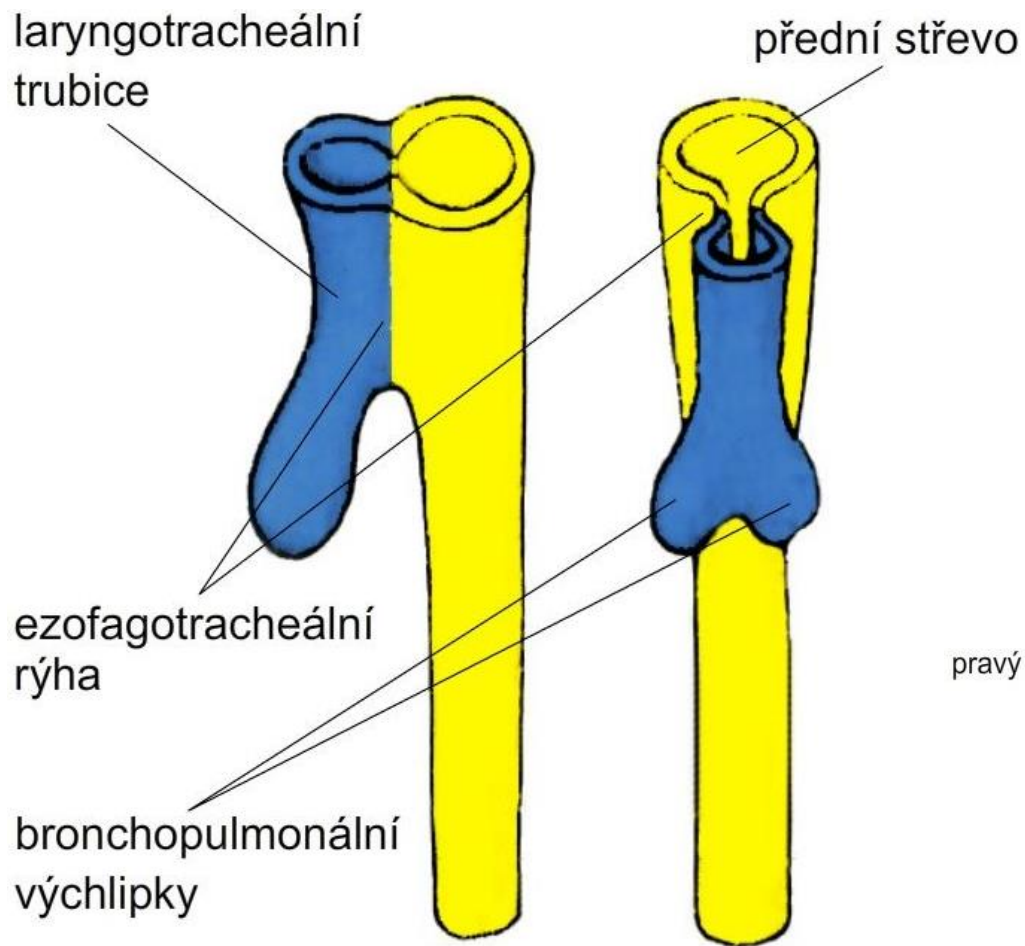


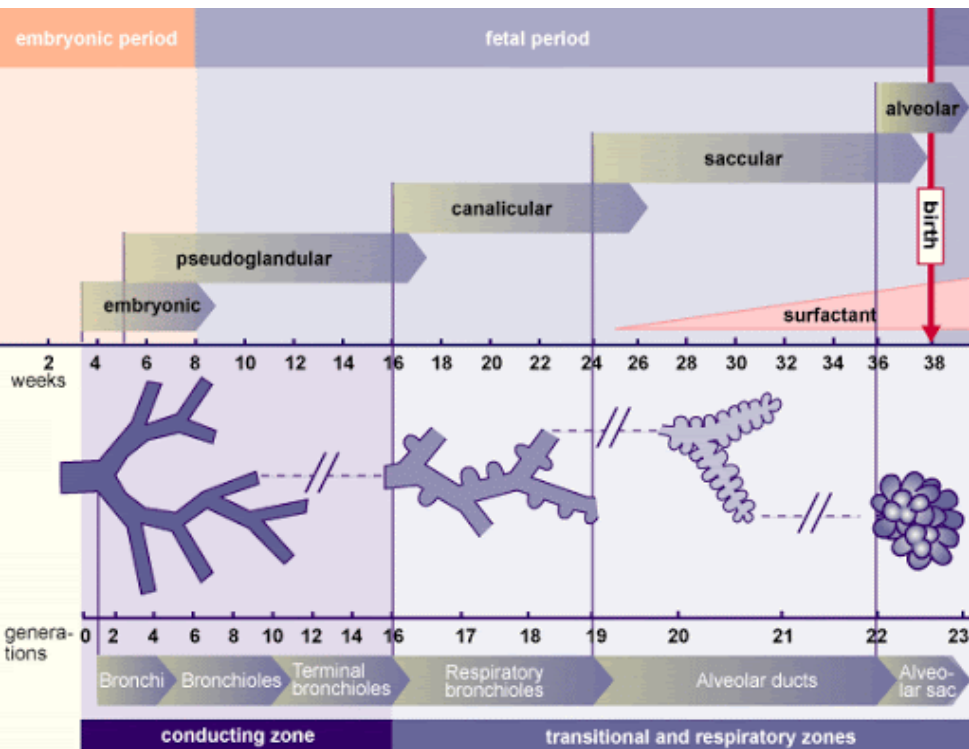
Interalveolární septum, alveolární epitel



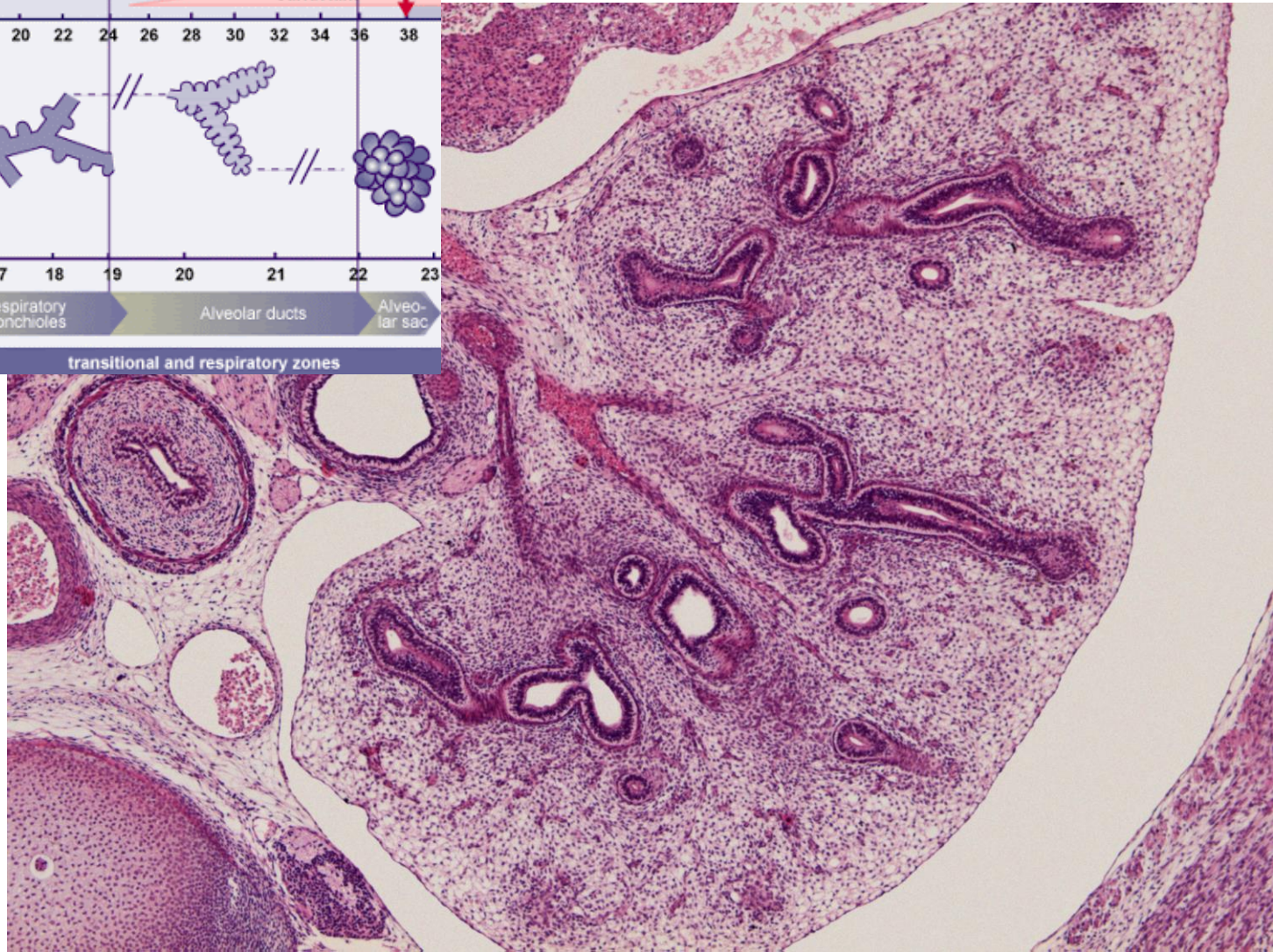
Vývoj dýchacího systému







Zárodek člověka (8. týden)





Dýchací systém

Preparáty

24. Concha nasi

25. Epiglottis (+ 28.)

26. Larynx

27. Trachea

29. Pulmo

Atlas EM

Čichový epitel (23)

Bronchiolus (60)

Alveolární epitel (61)

Vývoj plic (83)