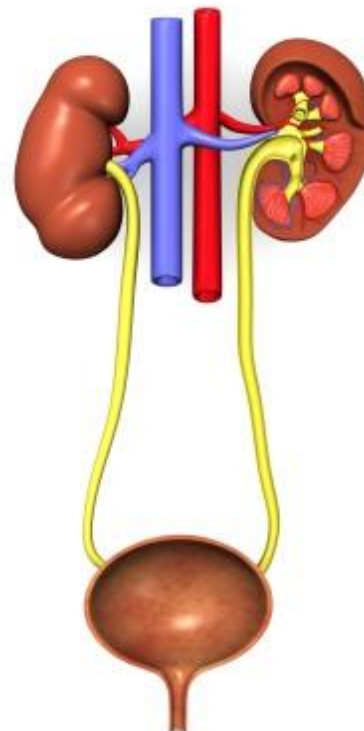
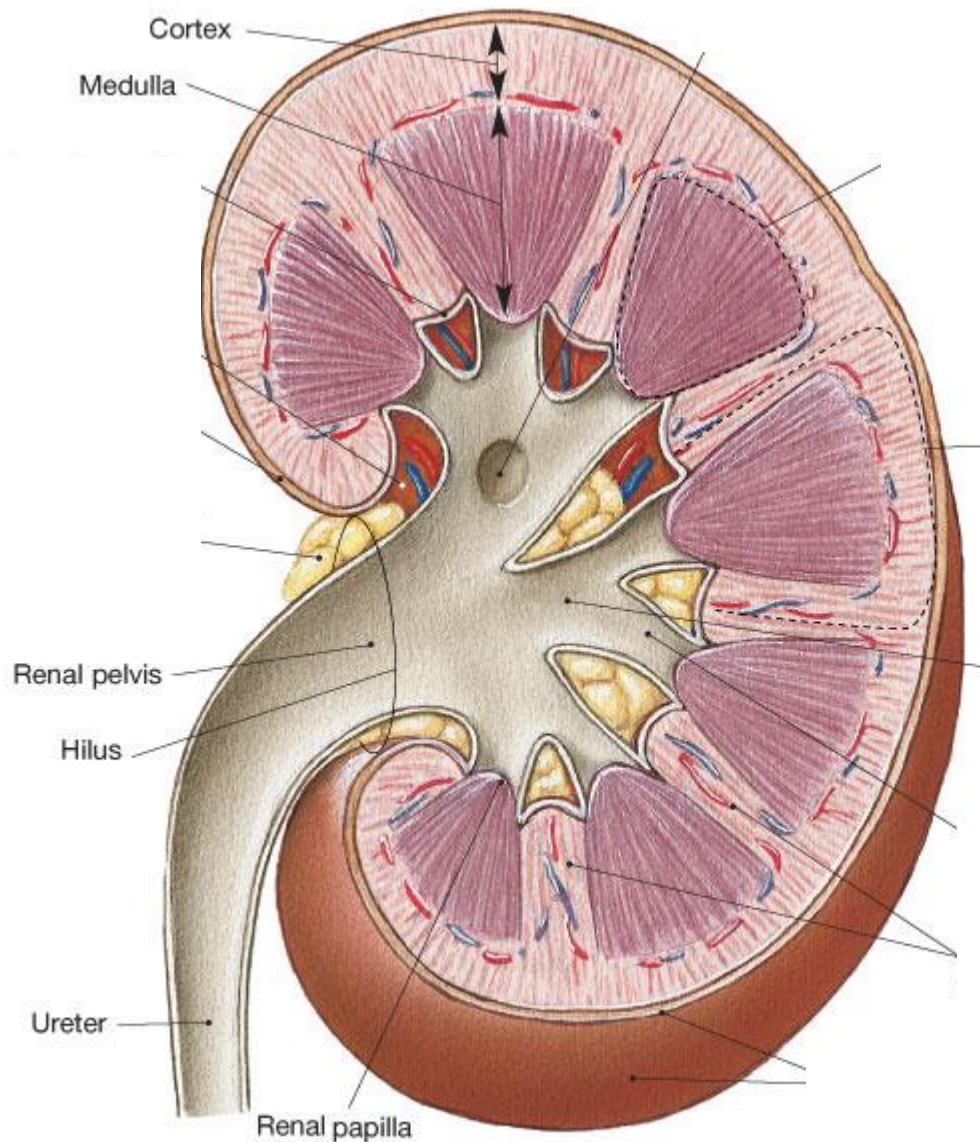




Močový systém

- *Ren (ledvina)*
- *Calyx renalis*
- *Ureter*
- *Vesica urinalis*
- *Urethra*





Ledvina (*ren, nephros*)

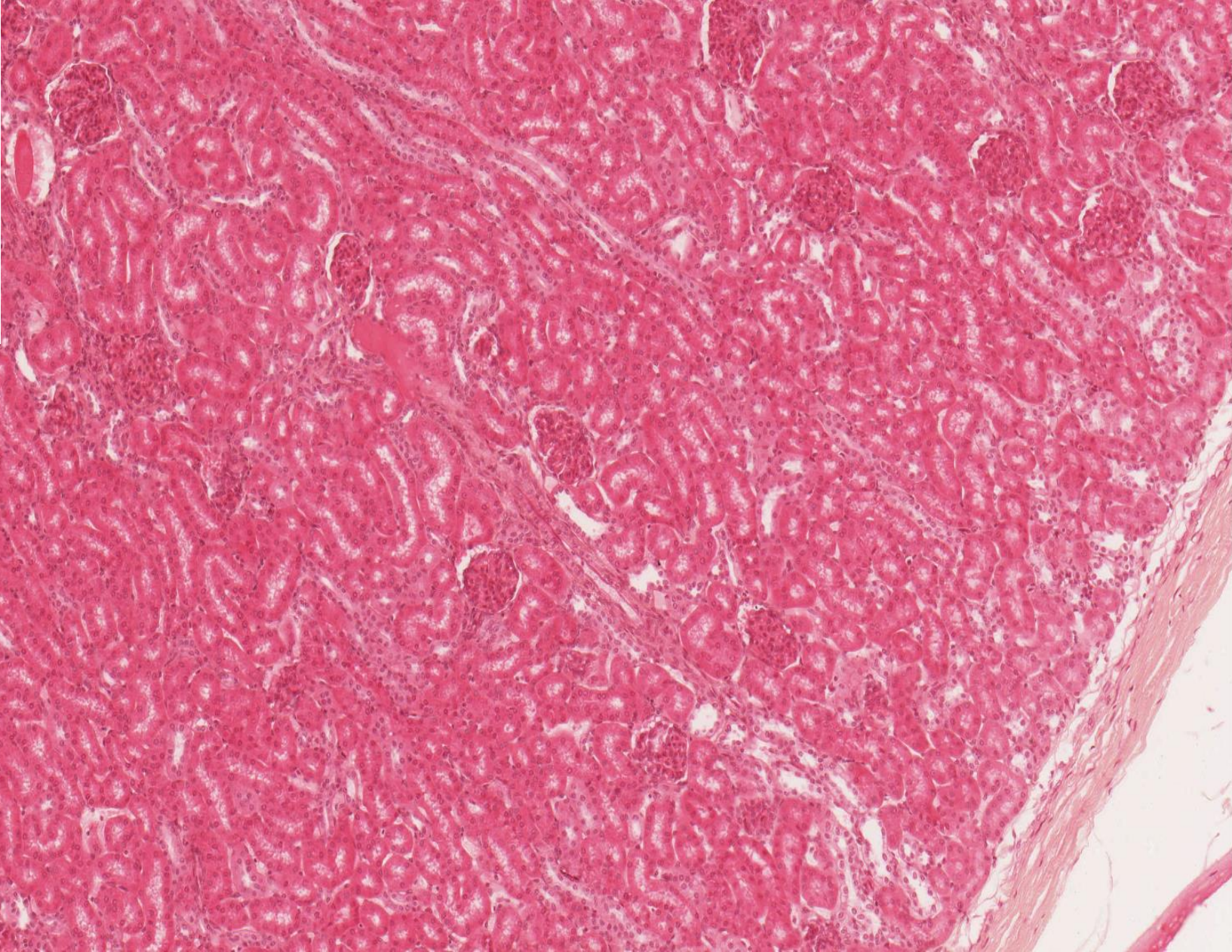
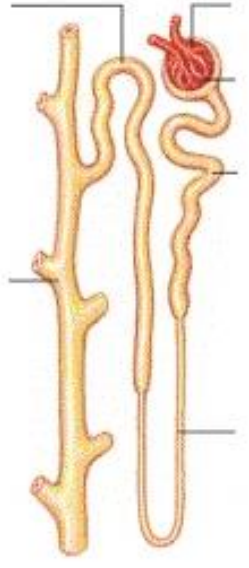
capsula fibrosa
capsula adiposa

Cortex:

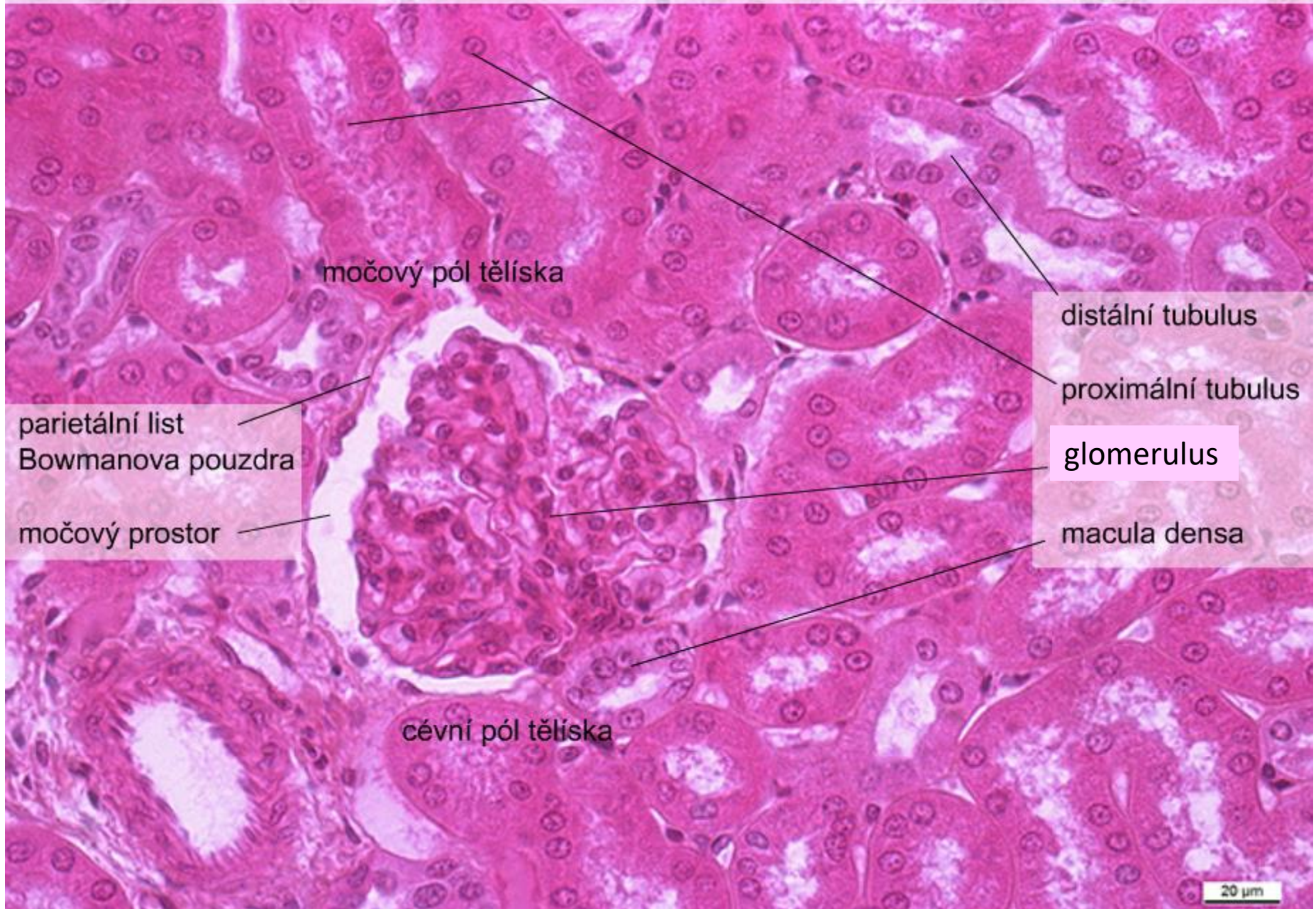
- *cortex corticis*
- *pars radiata corticis*
- *columnae renales*
(Bertini)

Medulla:

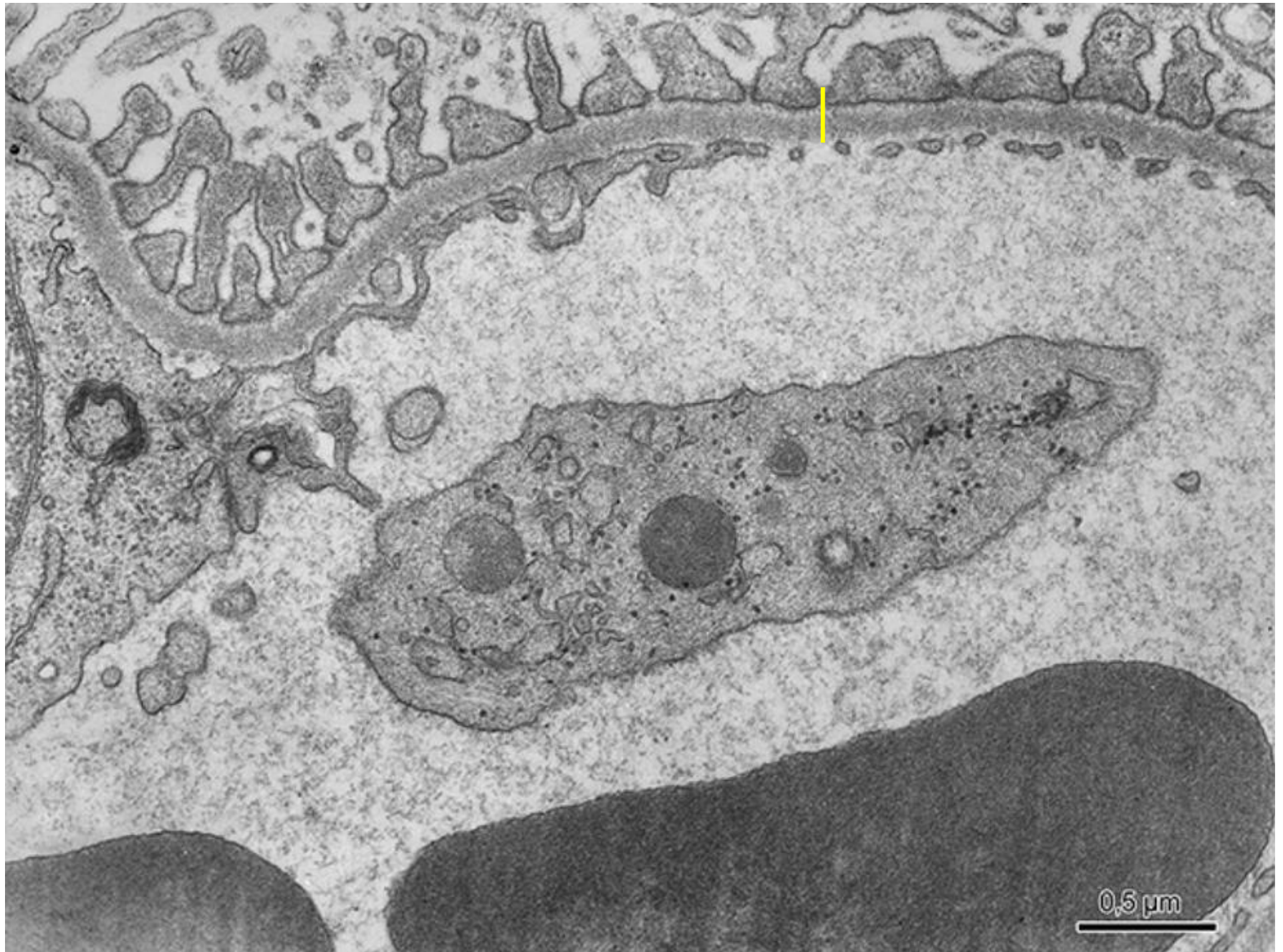
- *pyramides renales* (10 – 18)
- *papillae renales*
- *foramina papillaria na area cribrosa*
- *striae medullares corticis*



Ren – corpusculum renis, (HE), objektiv 40×

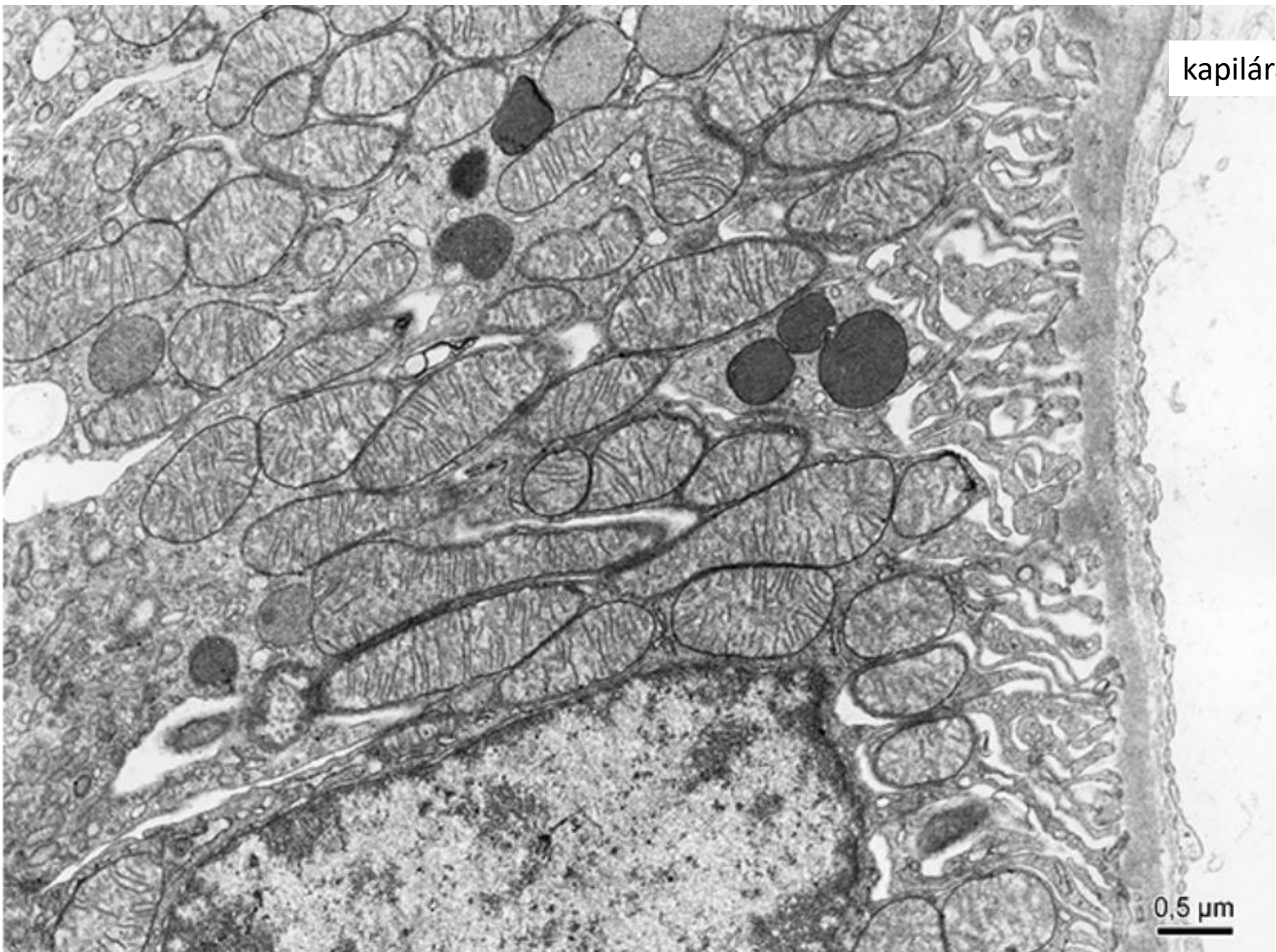


fenestrovaná kapilára glomerulu - filtrační bariéra



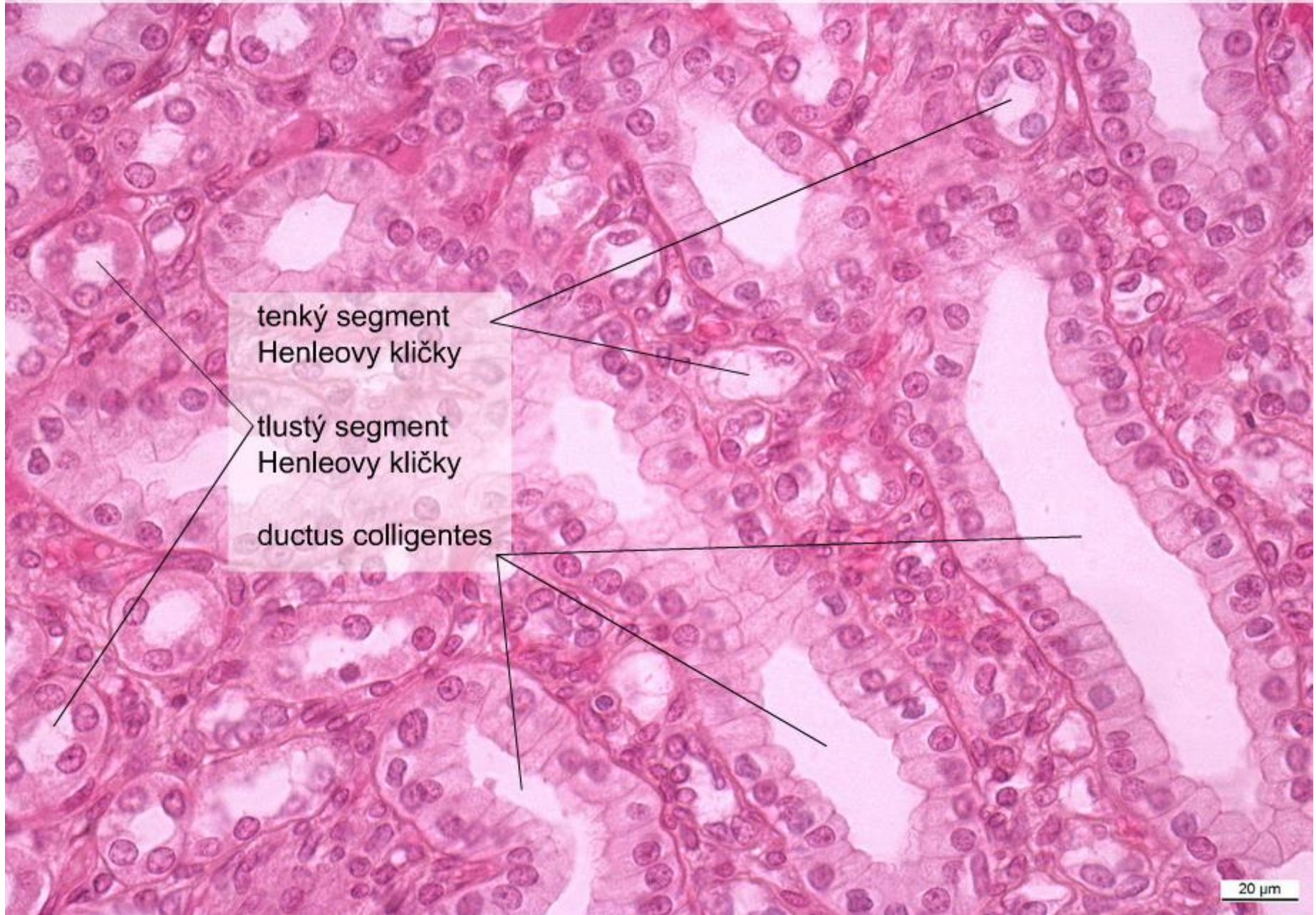
distální tubulus - bazální labyrint

kapilára



0,5 μ m

Ren – medulla, (HE), objektiv 40×



Calyx renalis, (HE), objektiv 2,5×

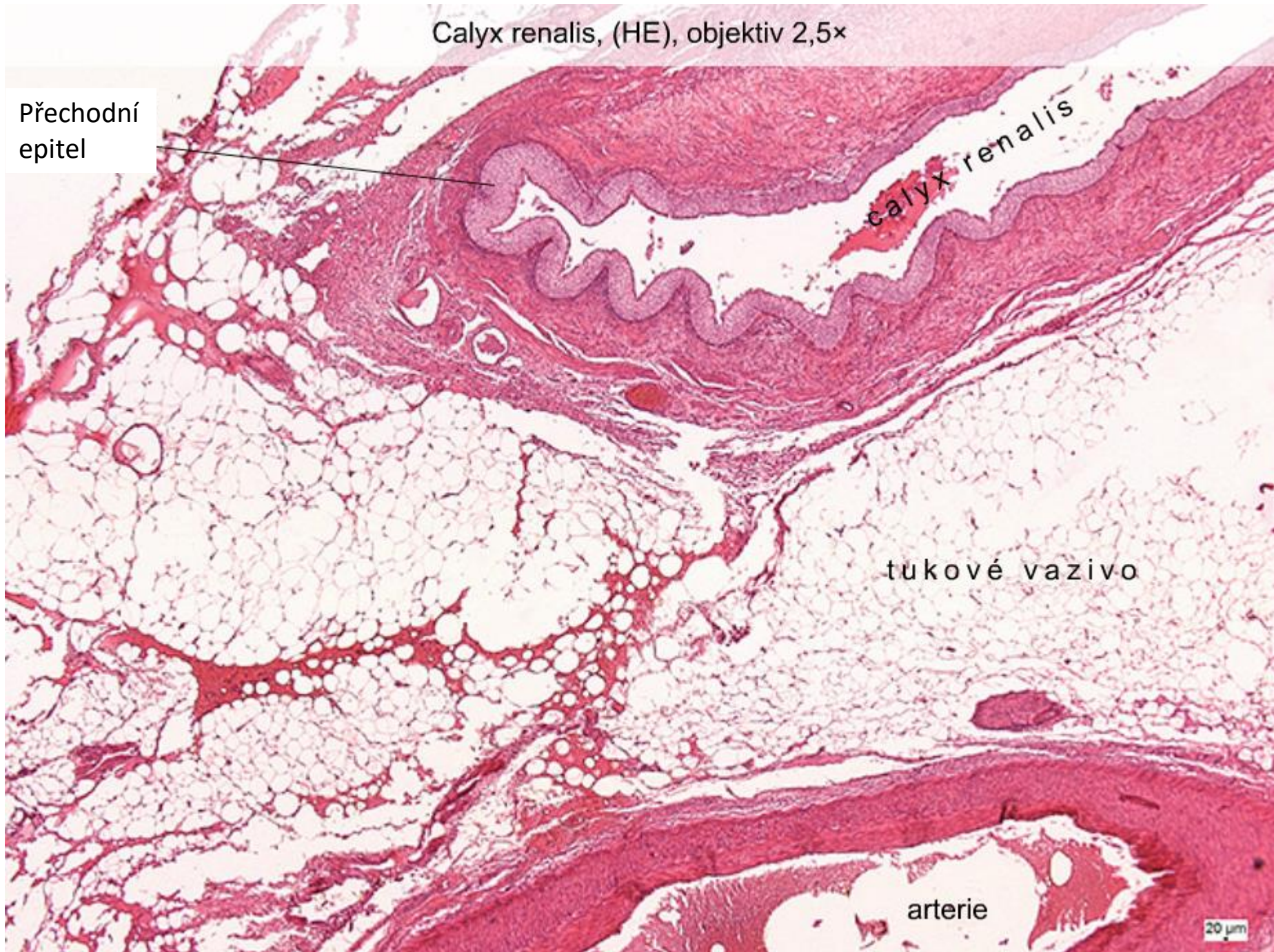
Přechodní
epitel

calyx renalis

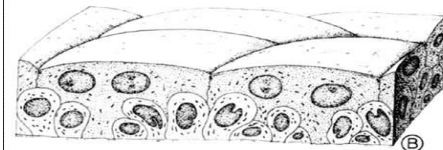
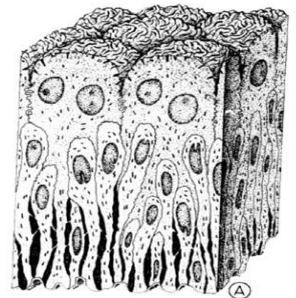
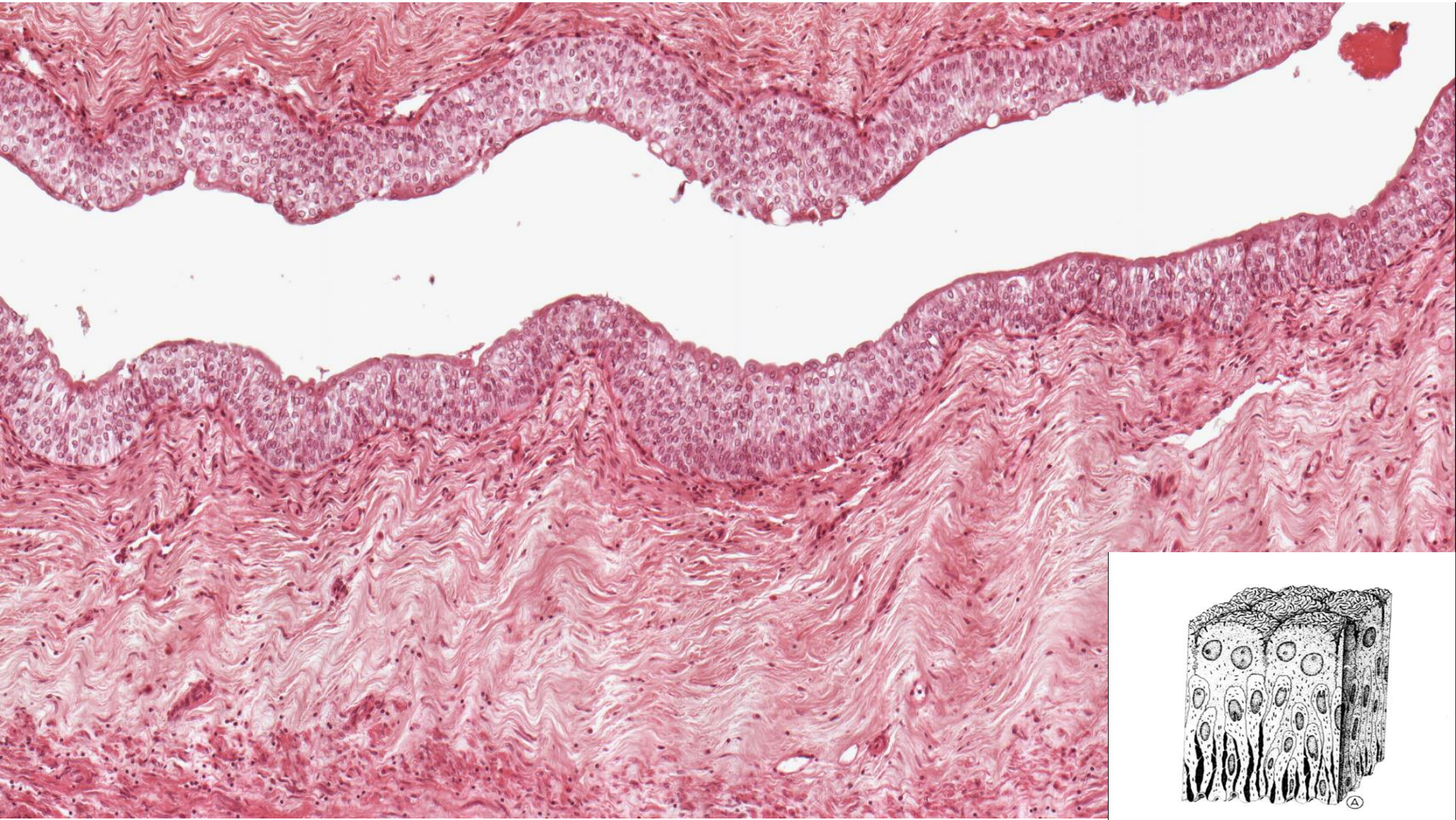
tukové vazivo

arterie

20 μm



Calyx renalis (HE)



Ureter – vazivo, (HEŠ), objektiv 5×

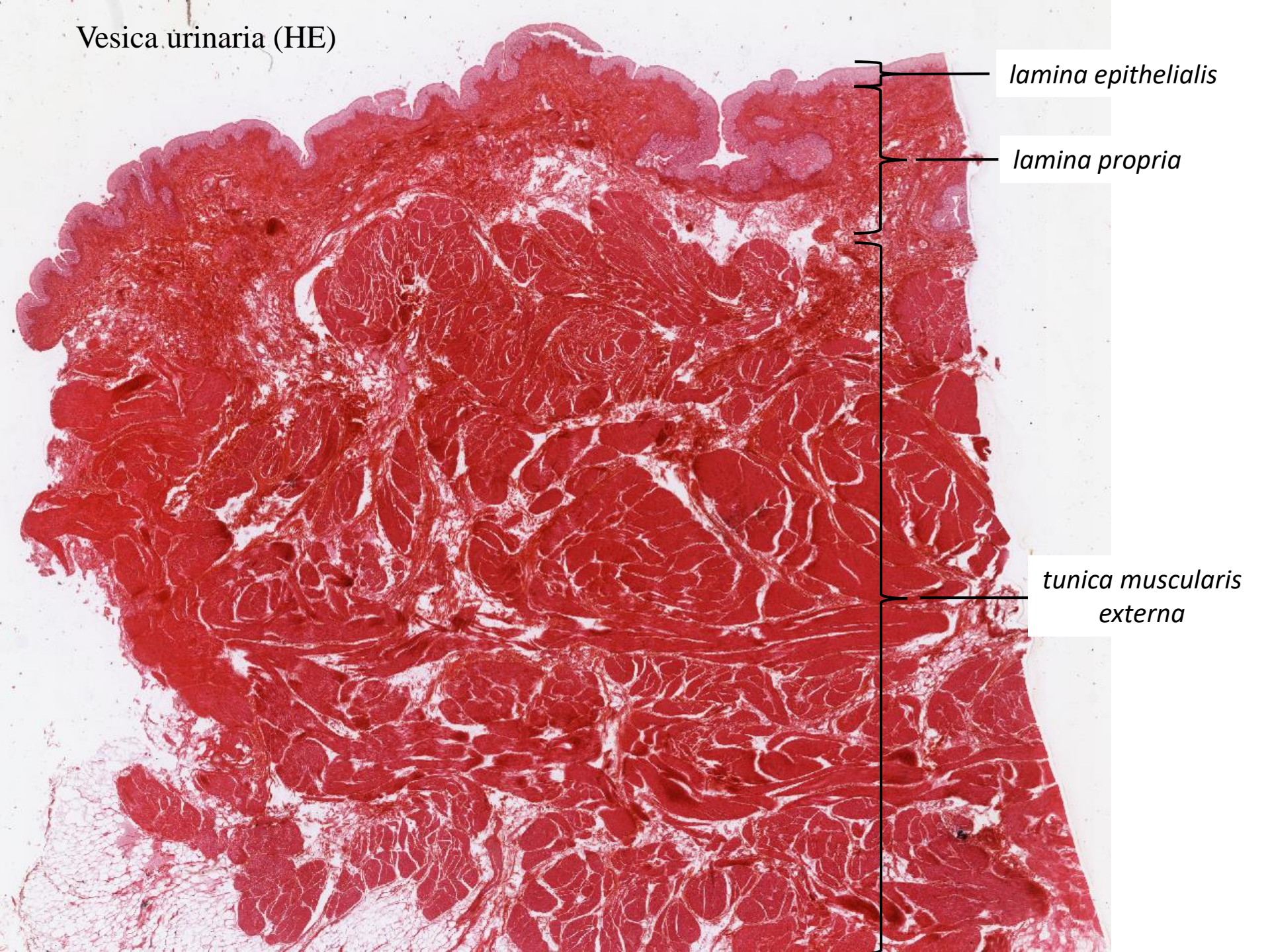


Vesica urinaria (HE)

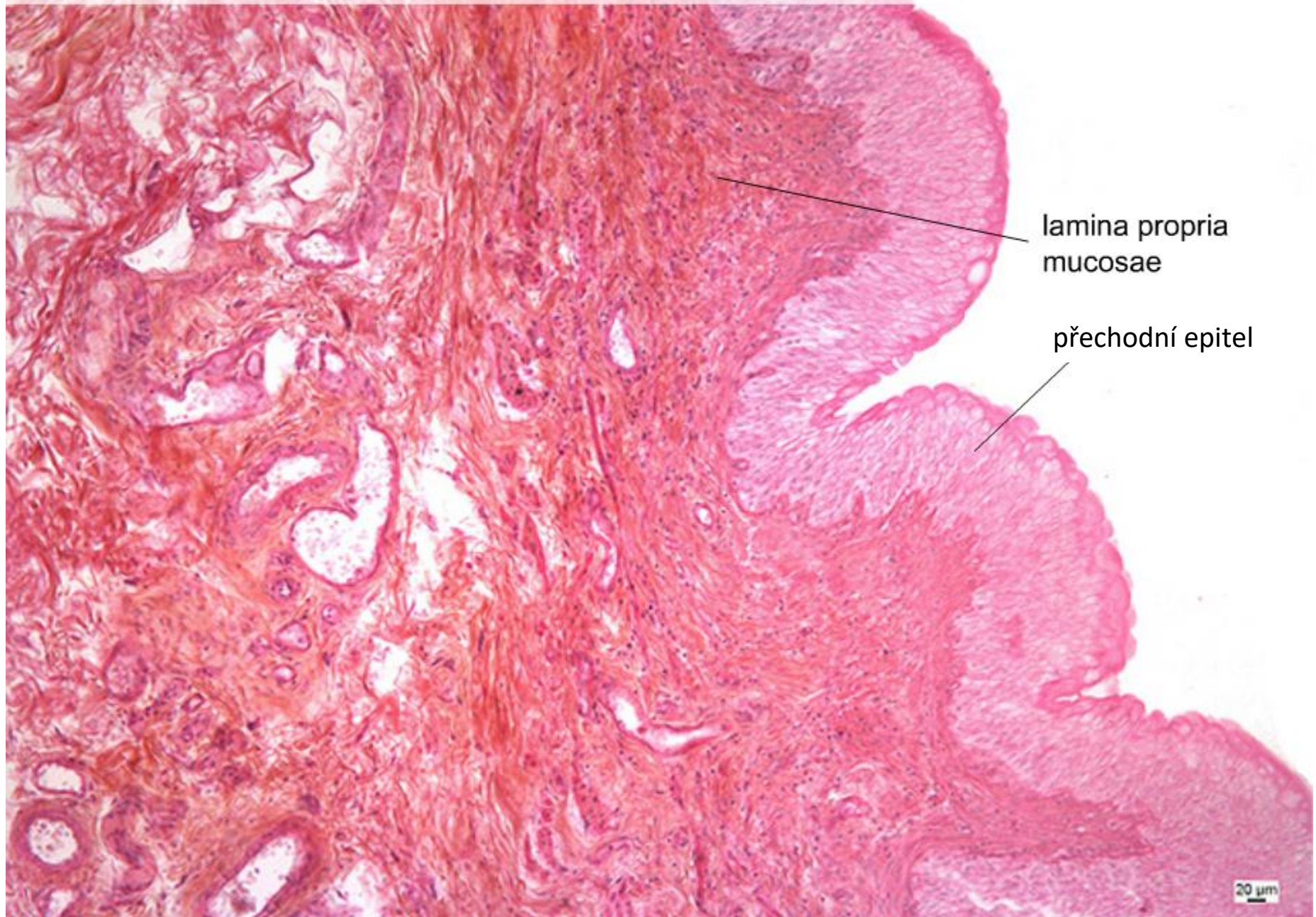
lamina epithelialis

lamina propria

*tunica muscularis
externa*



Vesica urinaria – tunica mucosa, (HE), objektiv 20×

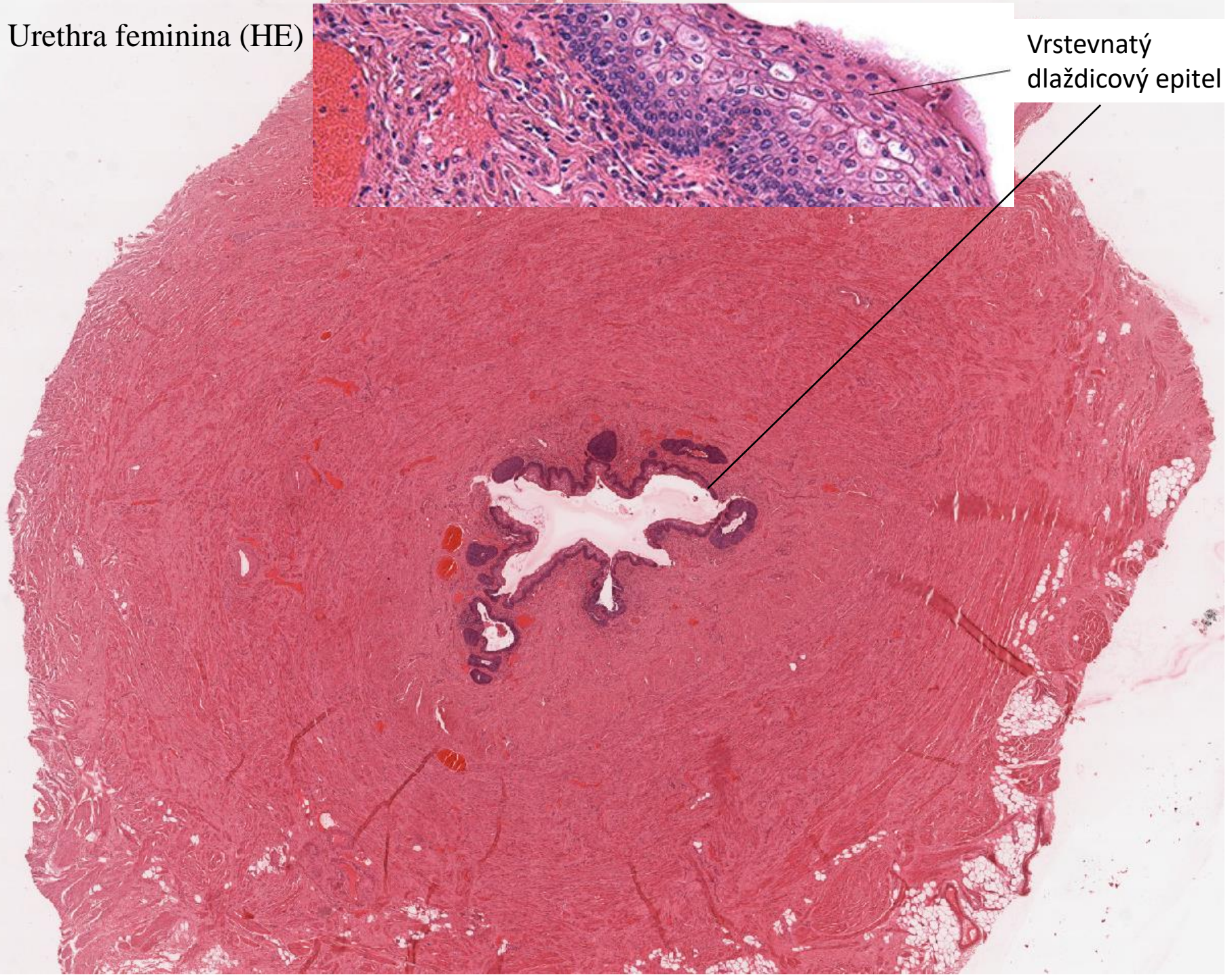


lamina propria
mucosae

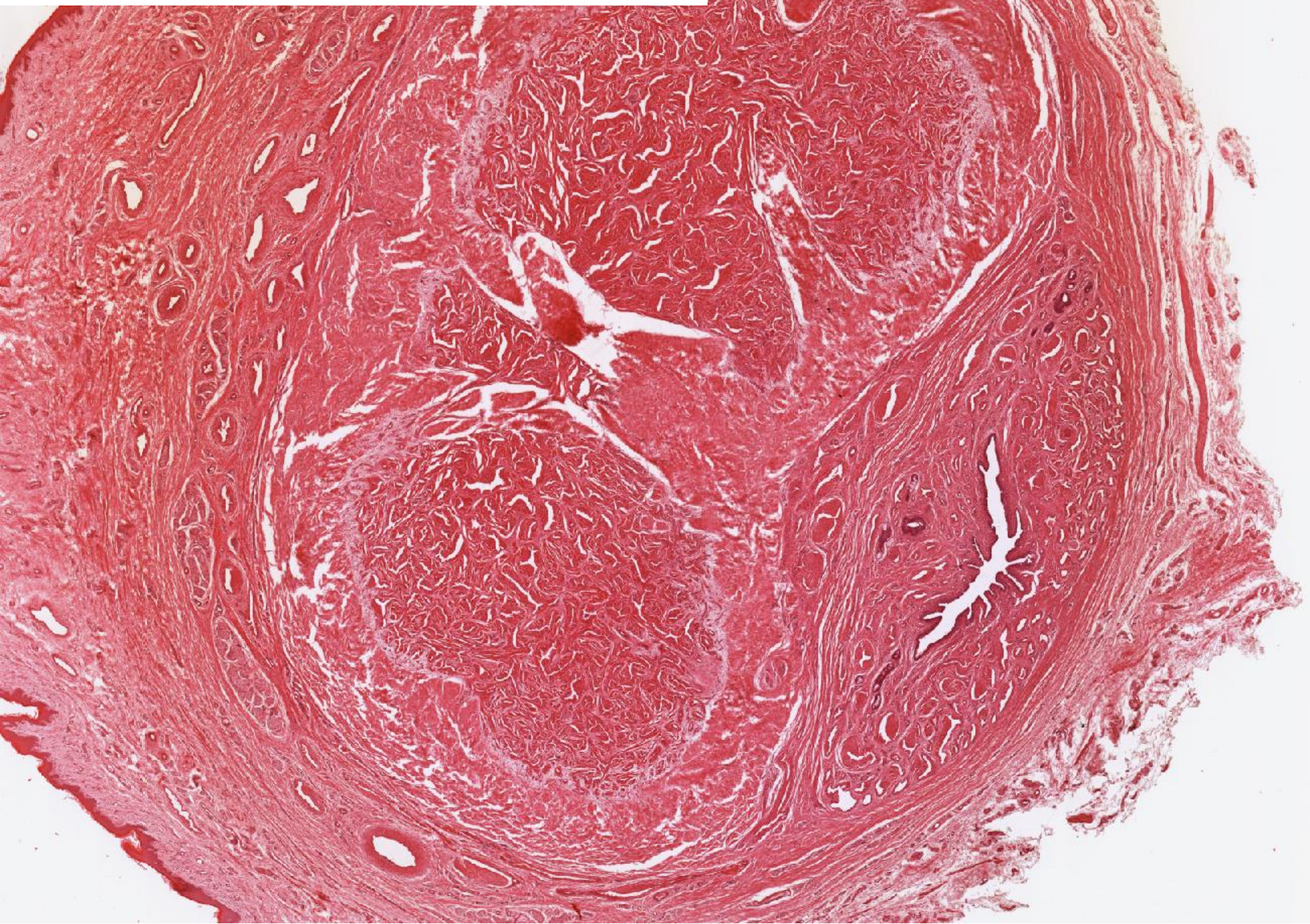
přechodní epitel

Urethra feminina (HE)

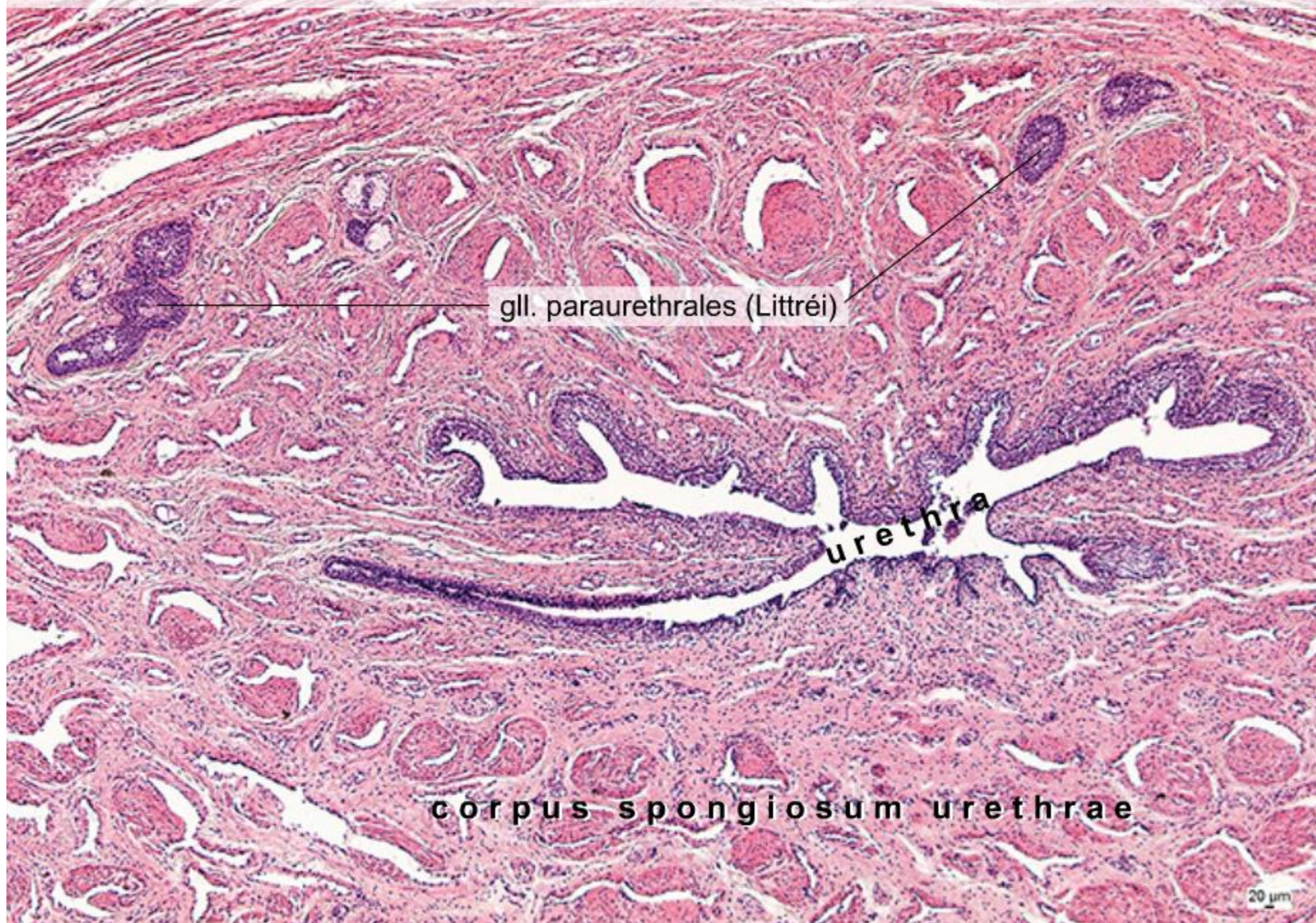
Vrstevnatý
dlaždicový epitel



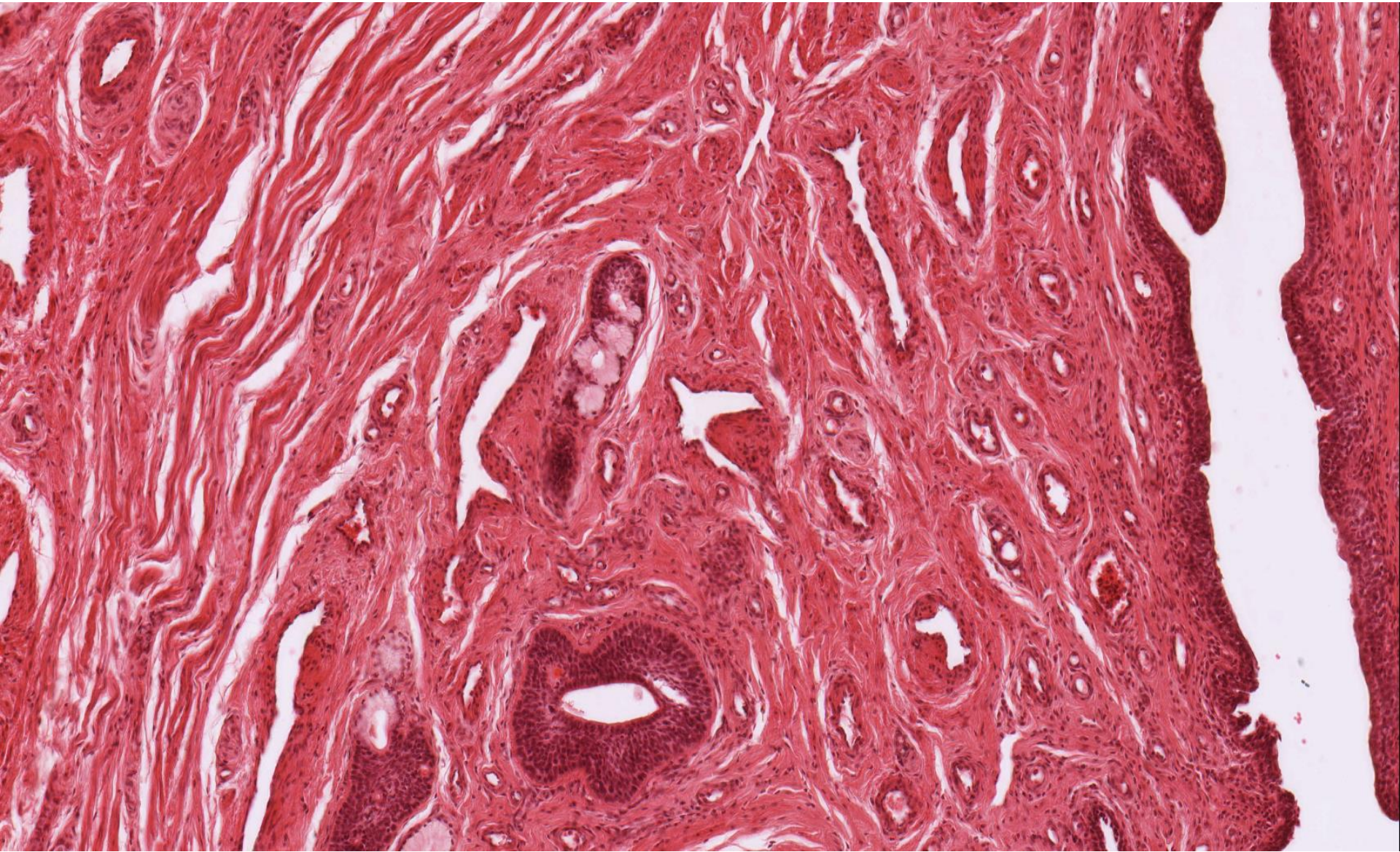
Penis – pars spongiosa urethrae masculinae (HE)



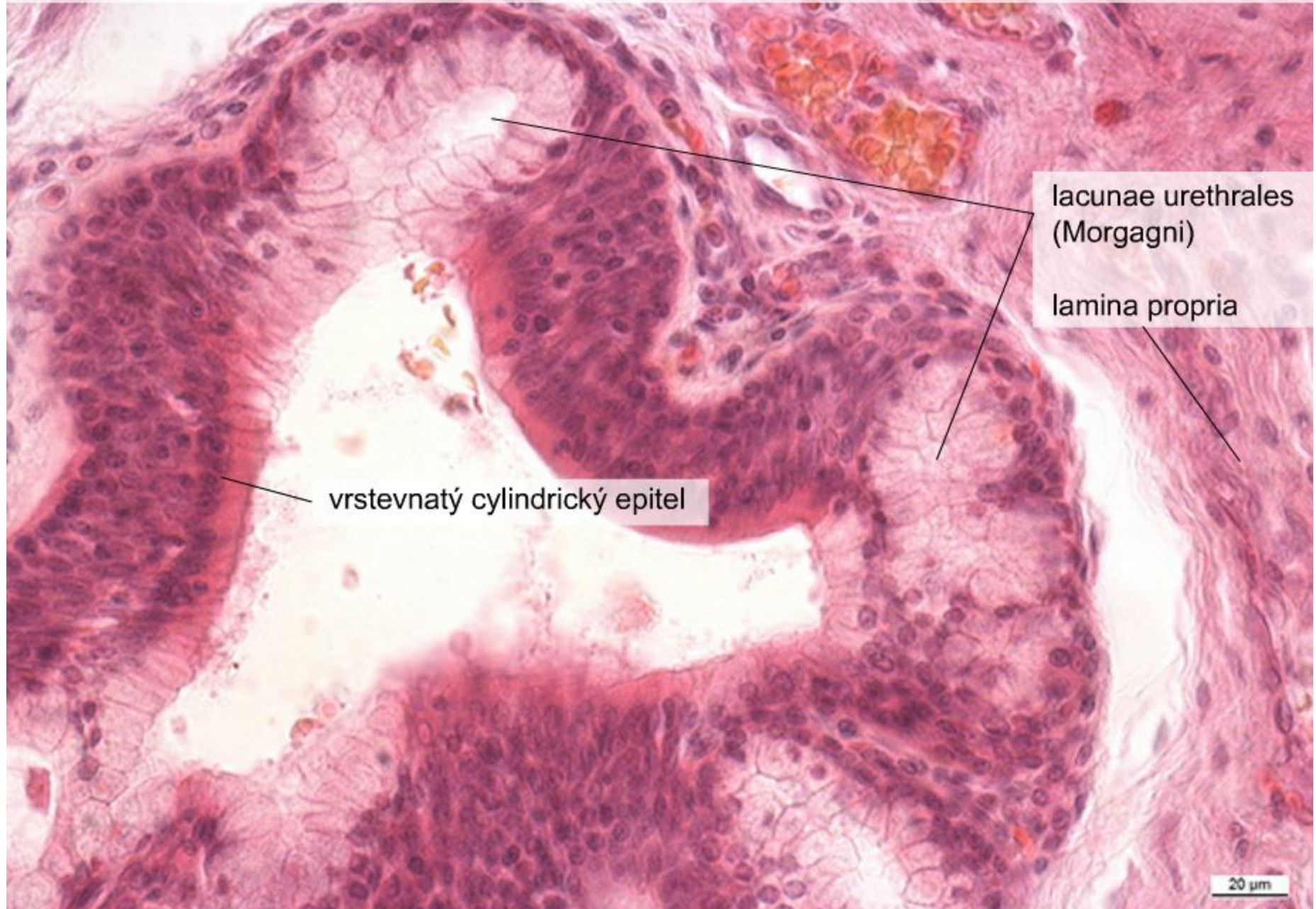
Urethra masculina – přehled, glandulae paraurethrales, (HE), objektiv 2,5×



Penis – pars spongiosa urethrae masculinae (HE)



Urethra masculina – lacunae urethrales, (HE), objektiv 40×



MOČOVÝ SYSTÉM

Preparáty:

- 30. *Ren* (HE)
- 31. *Ren* (Weigert – van Gieson)
- 32. *Calyx renalis* (HE)
- 33. *Ureter* (HE)
- 34. *Vesica urinaria* (HE)
- 35. *Urethra feminina* (HE)
- 41. *Penis – pars spongiosa urethrae masculinae* (HE)

Atlas EM: kartáčový lem (26)

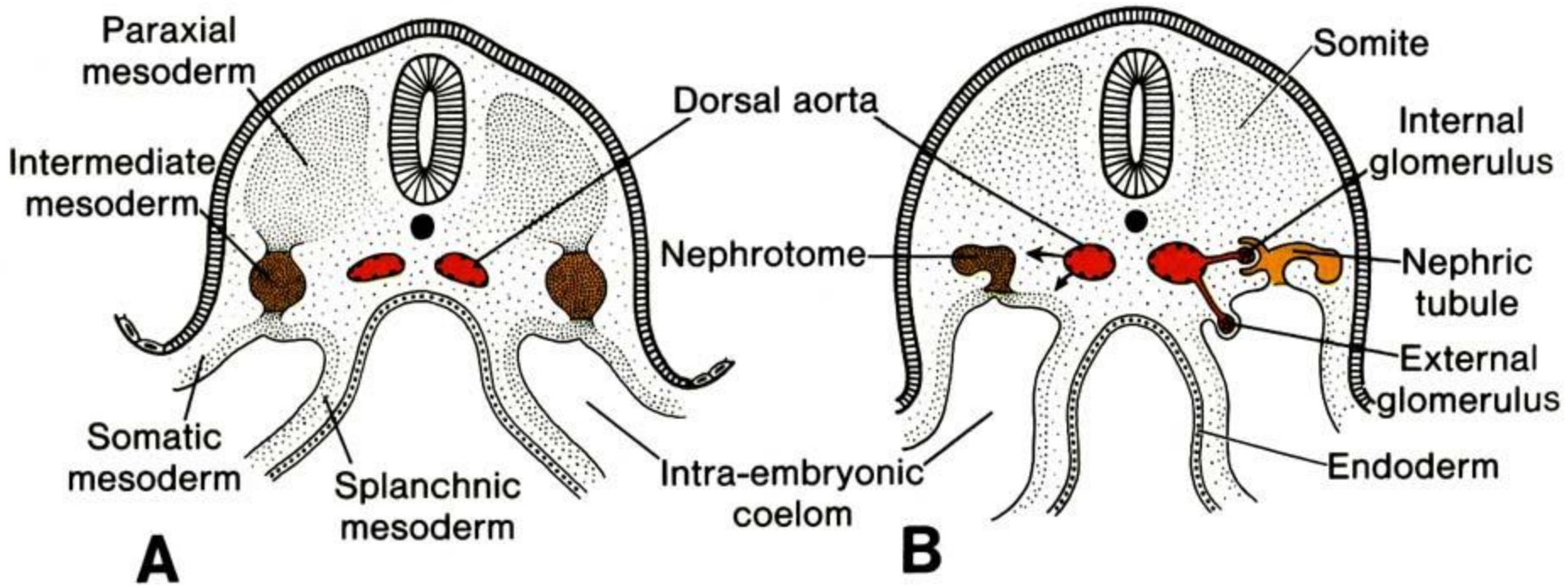
bazální labyrint (27)

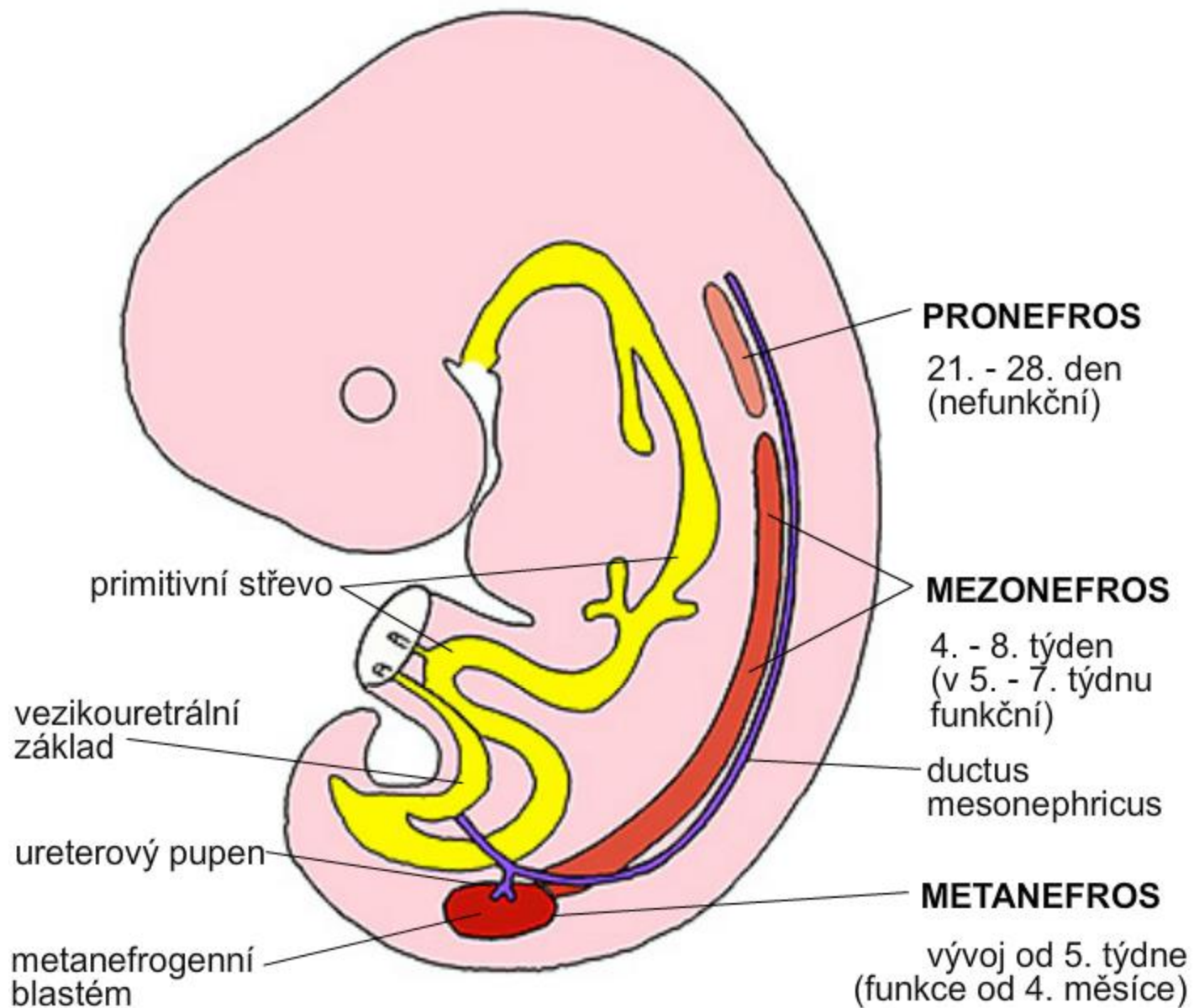
fenestrovaná kapilára glomerulu (57)

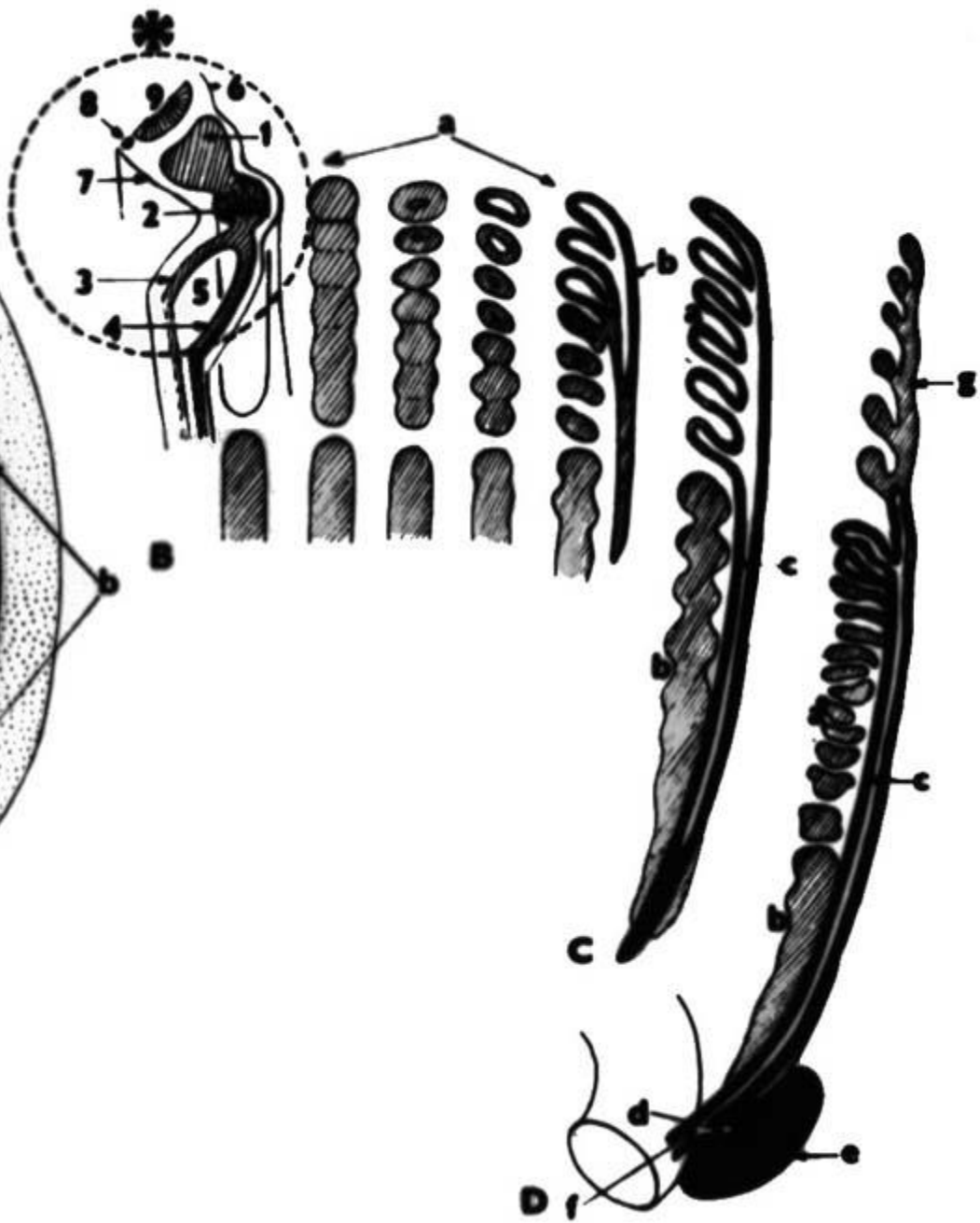
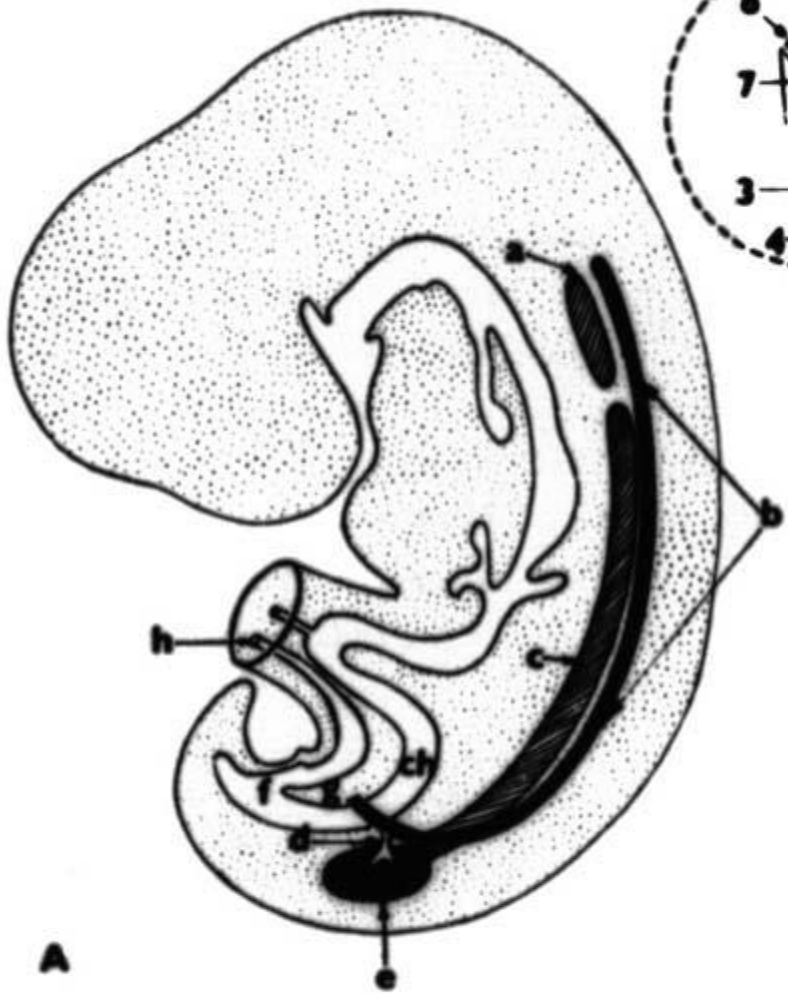
corpusculum renis s filtrační bariérou (69)

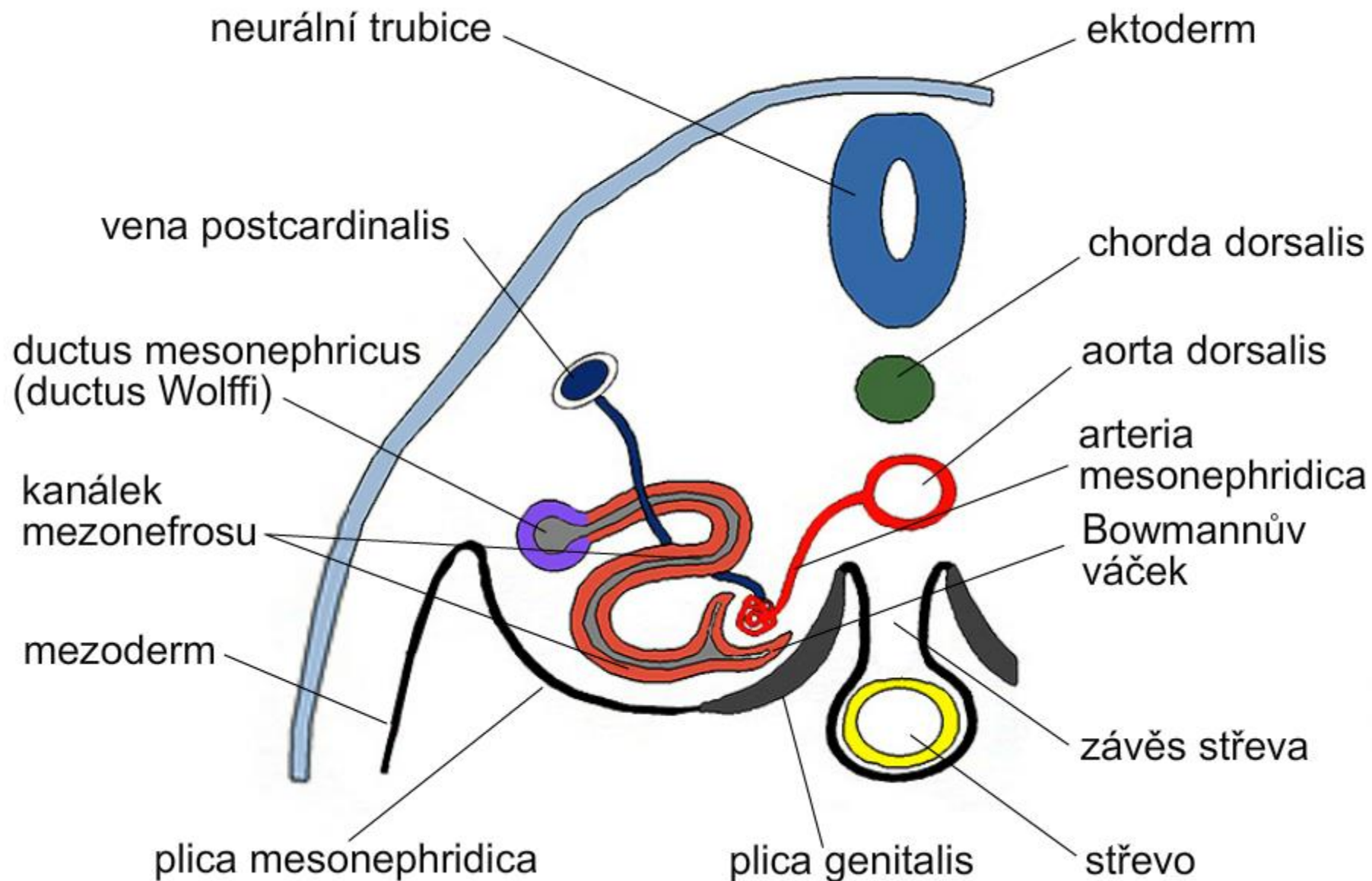
tubulus proximalis et distalis (70)

vývoj ledvin (94)









Vývoj nefronu

metanefrogenní
blastém

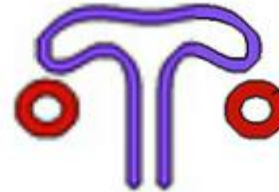
sběrací
kanálek

A



ledvinný
váček

B



nefronový
kanálek

C



glomerulus

D



Henleova
klička

E



proximální
tubulus

distální
tubulus

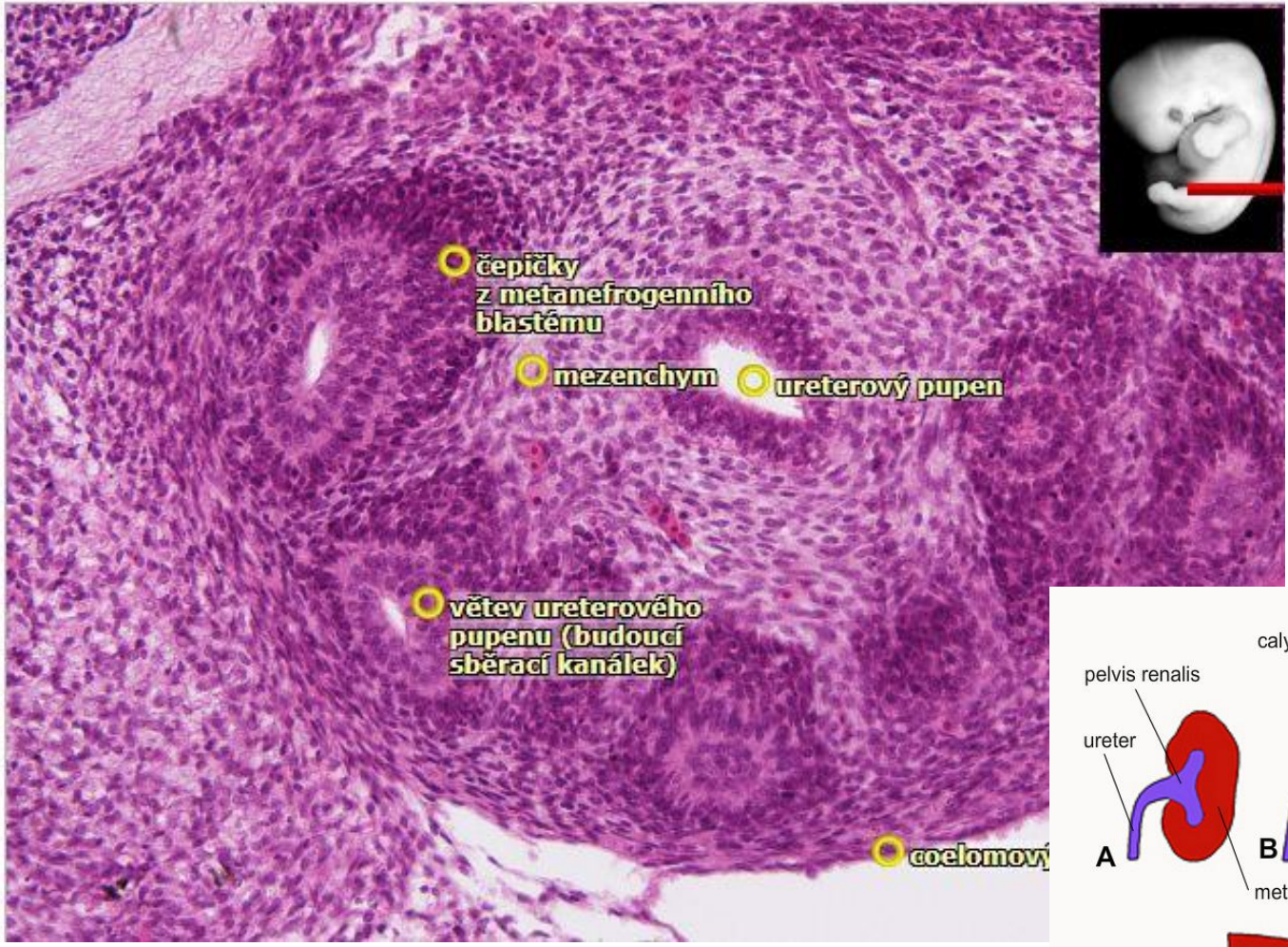
F



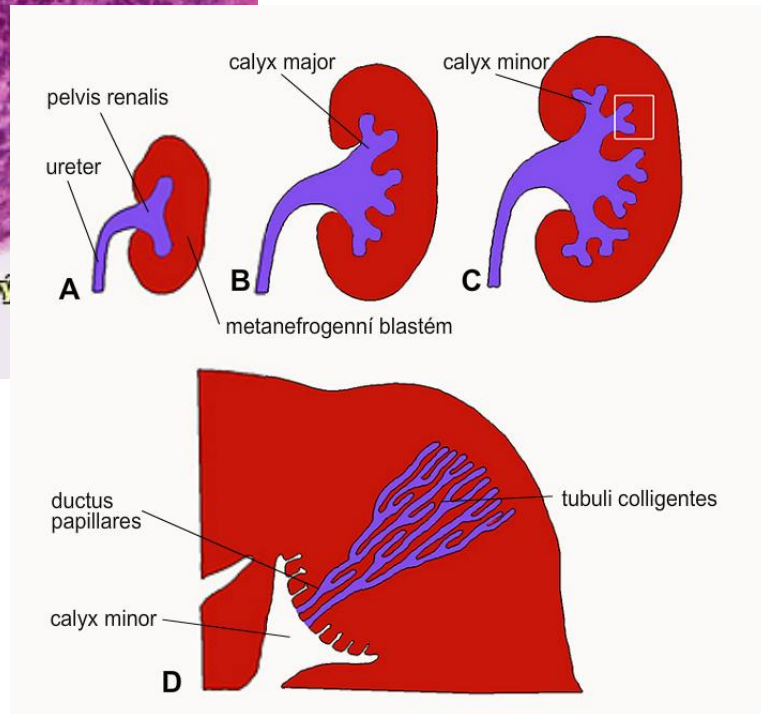
Bowmannův
váček

Henleova
klička

6-2 Zárodek člověka (7. týden) – příčný řez trupem, HE, zvětšení 200x



<https://is.muni.cz/do/rect/el/estud/lf/ps15/atlas/web/atlas.html?chapter=7&prep=2>



Septace kloaky

