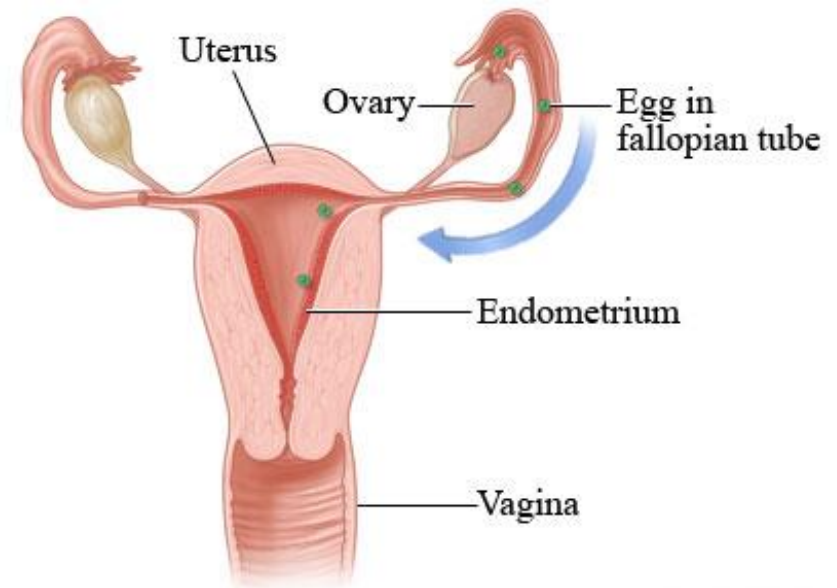


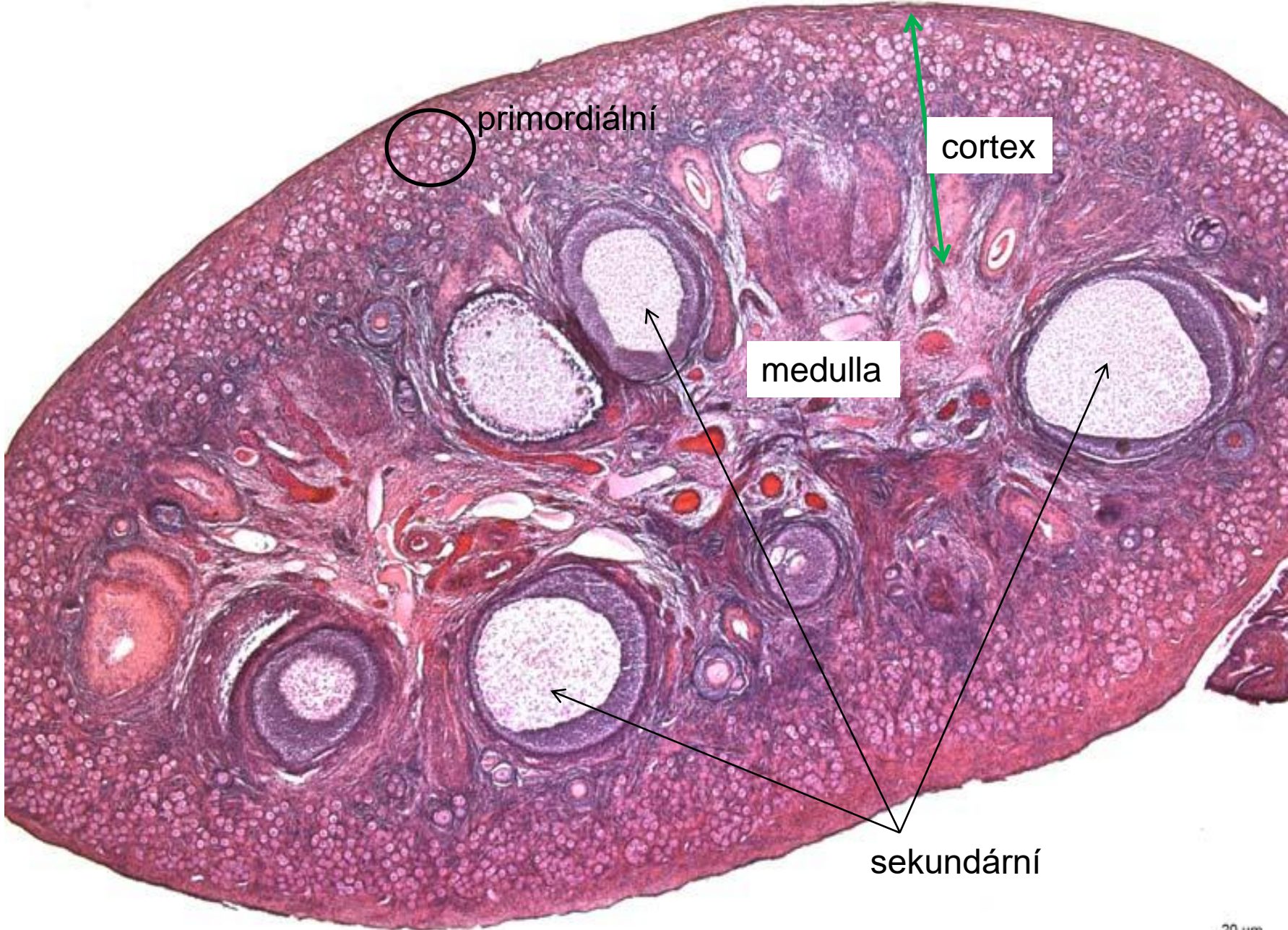


ŽENSKÝ POHLAVNÍ SYSTÉM I

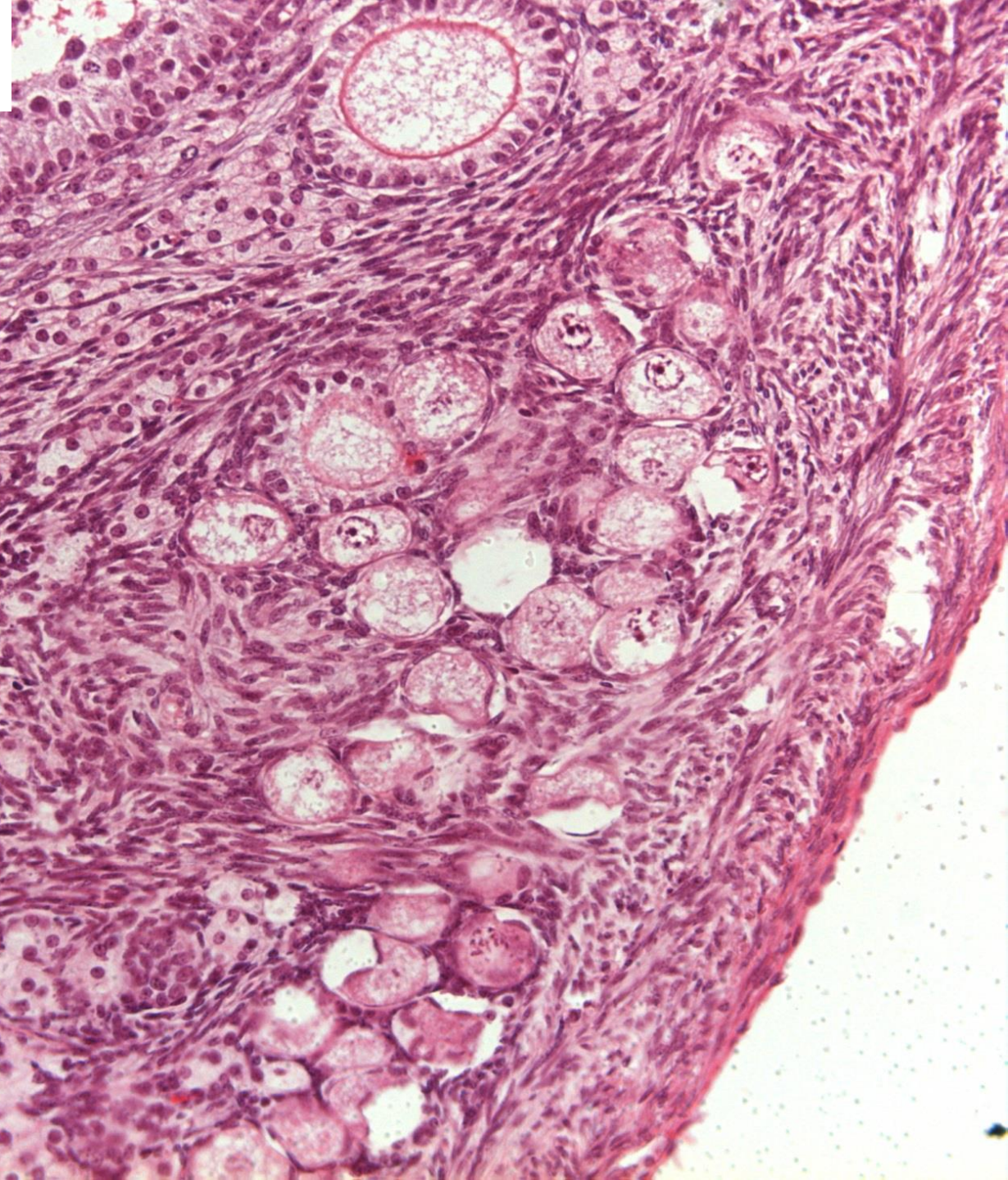
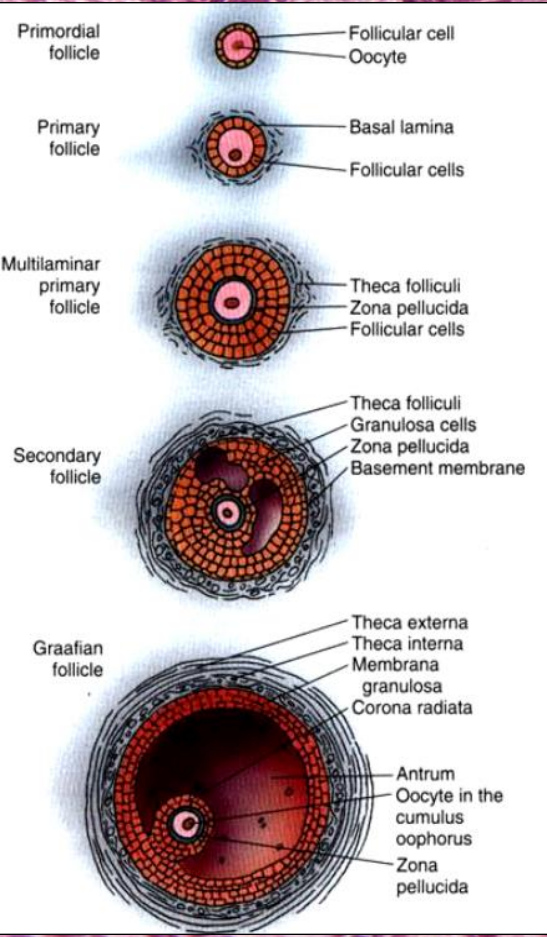
- **vaječník** (ovarium, oophoron)
- **vejcovod** (tuba uterina, tuba Fallopii, salpinx)
- **děloha** (uterus, metra, hystera)

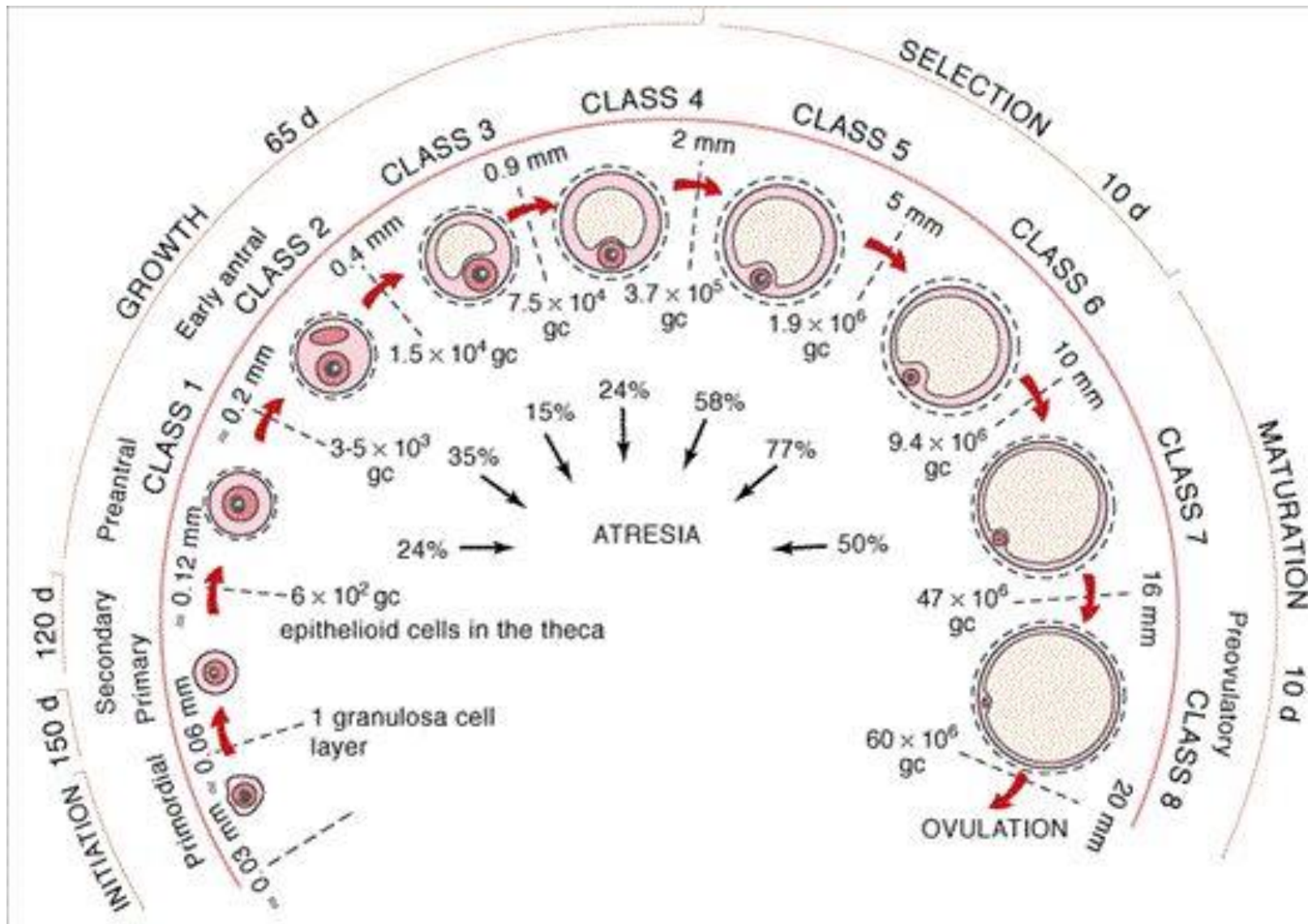


ovarium-kočka



primordiální a primární unilaminární folikuly





Source: Gardner DG, Shoback D: Greenspan's Basic & Clinical Endocrinology, 9th Edition: www.accessmedicine.com
 Copyright © The McGraw-Hill Companies, Inc. All rights reserved.

ovarium-člověk



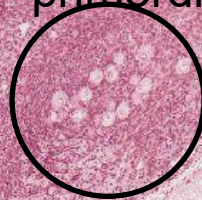
atretický sekundární
folikul

buněčné
vazivo

tunica
albuginea

ovarium-kočka

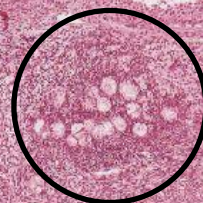
primordiální



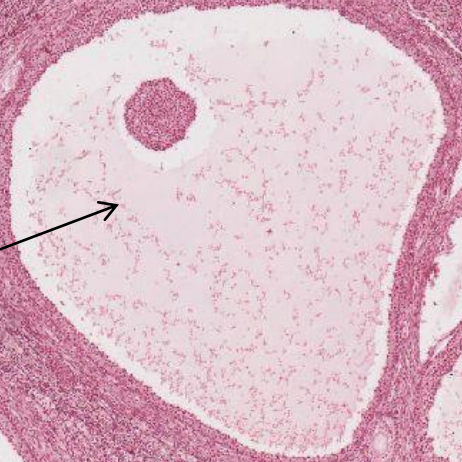
atretický



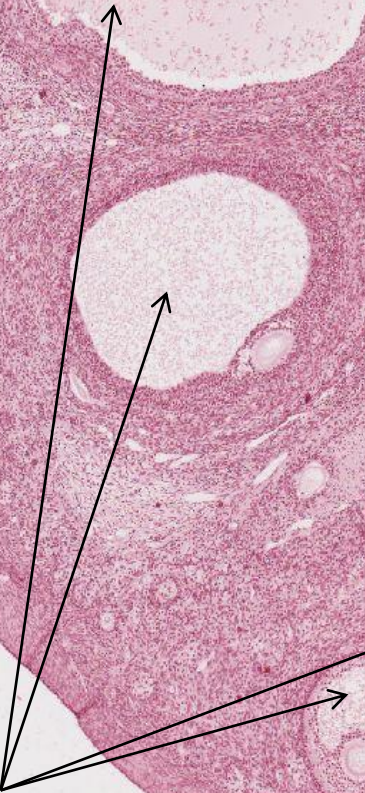
primordiální



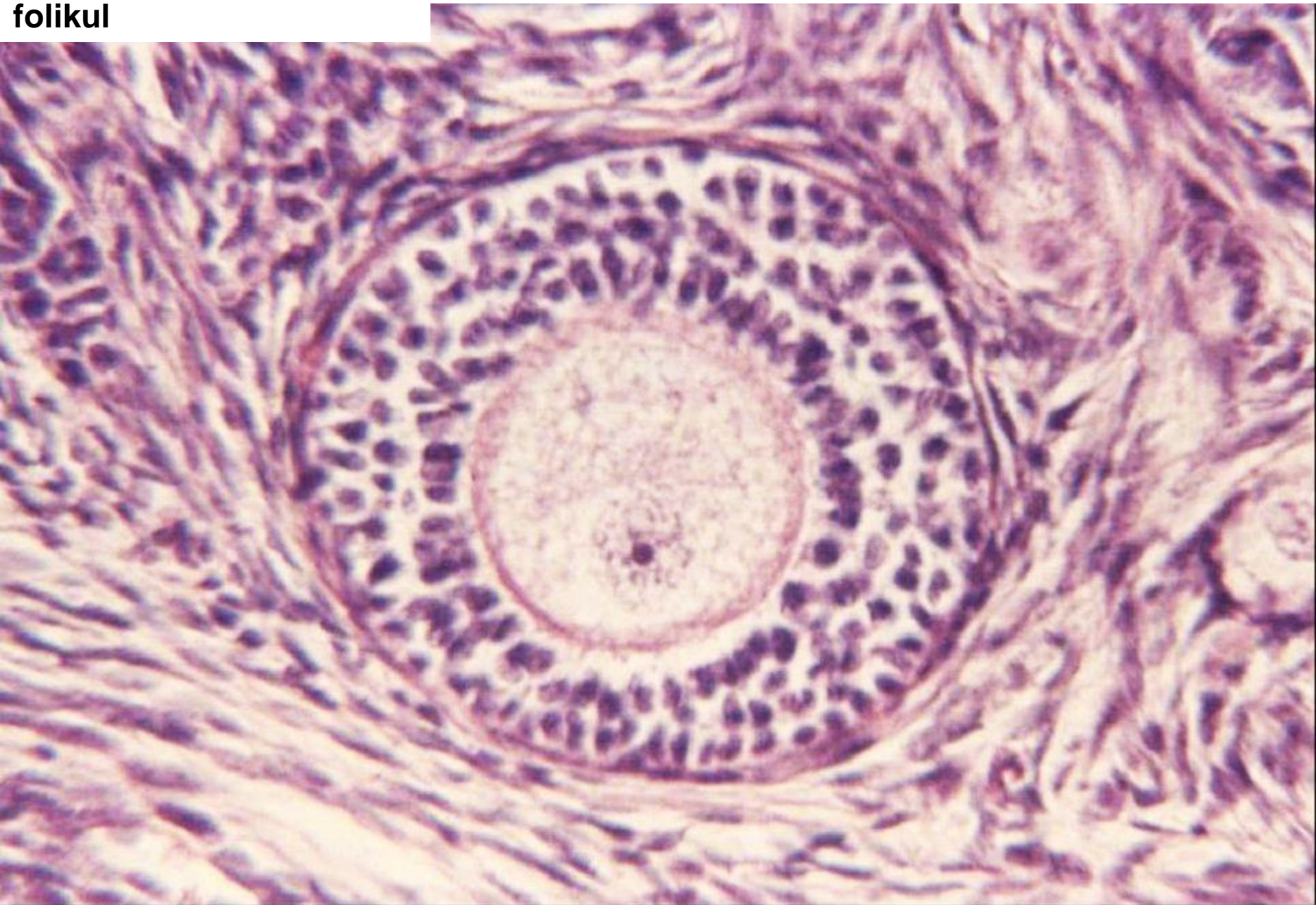
Graafův



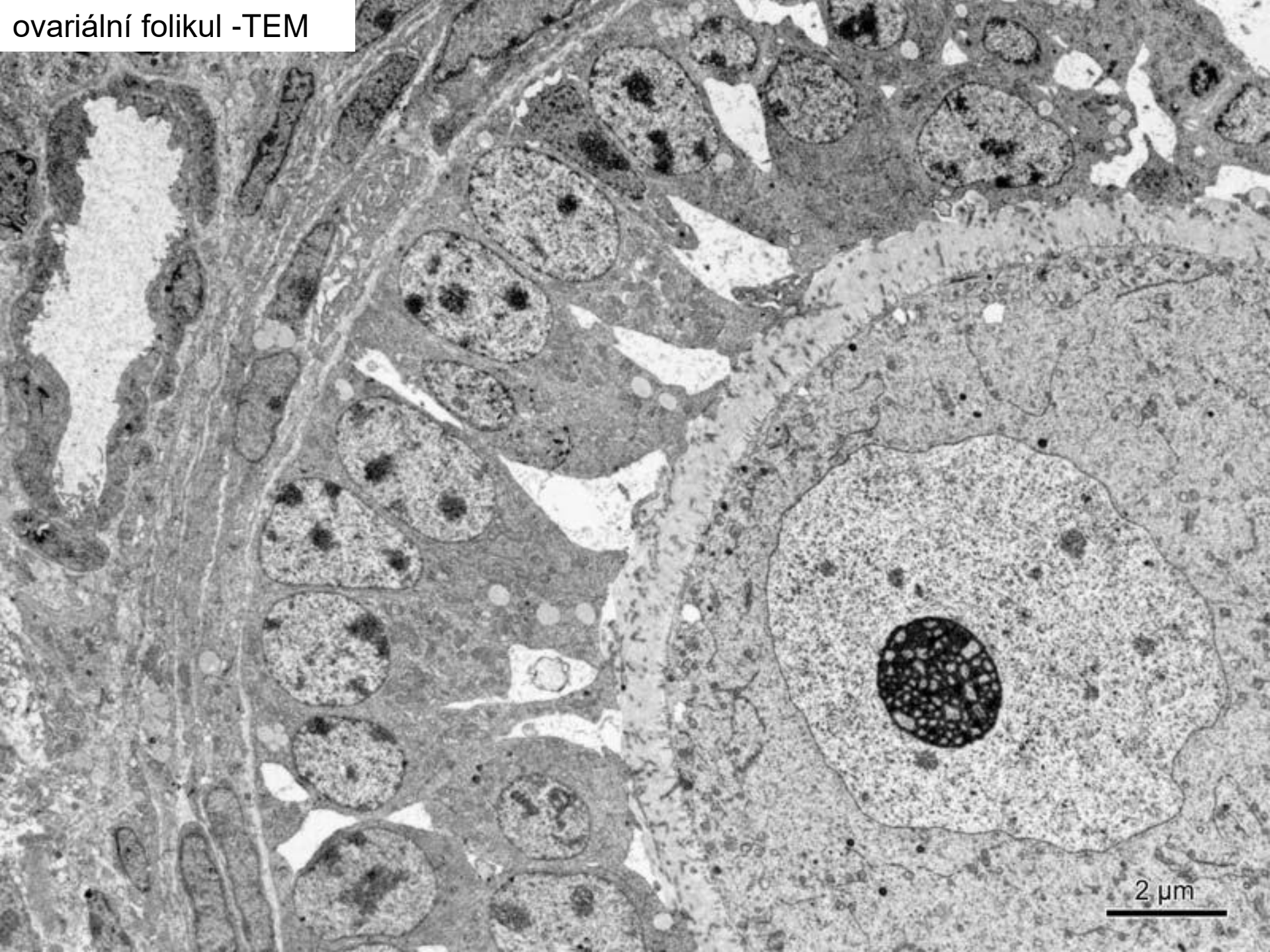
sekundární



**primární multilaminární
folikul**

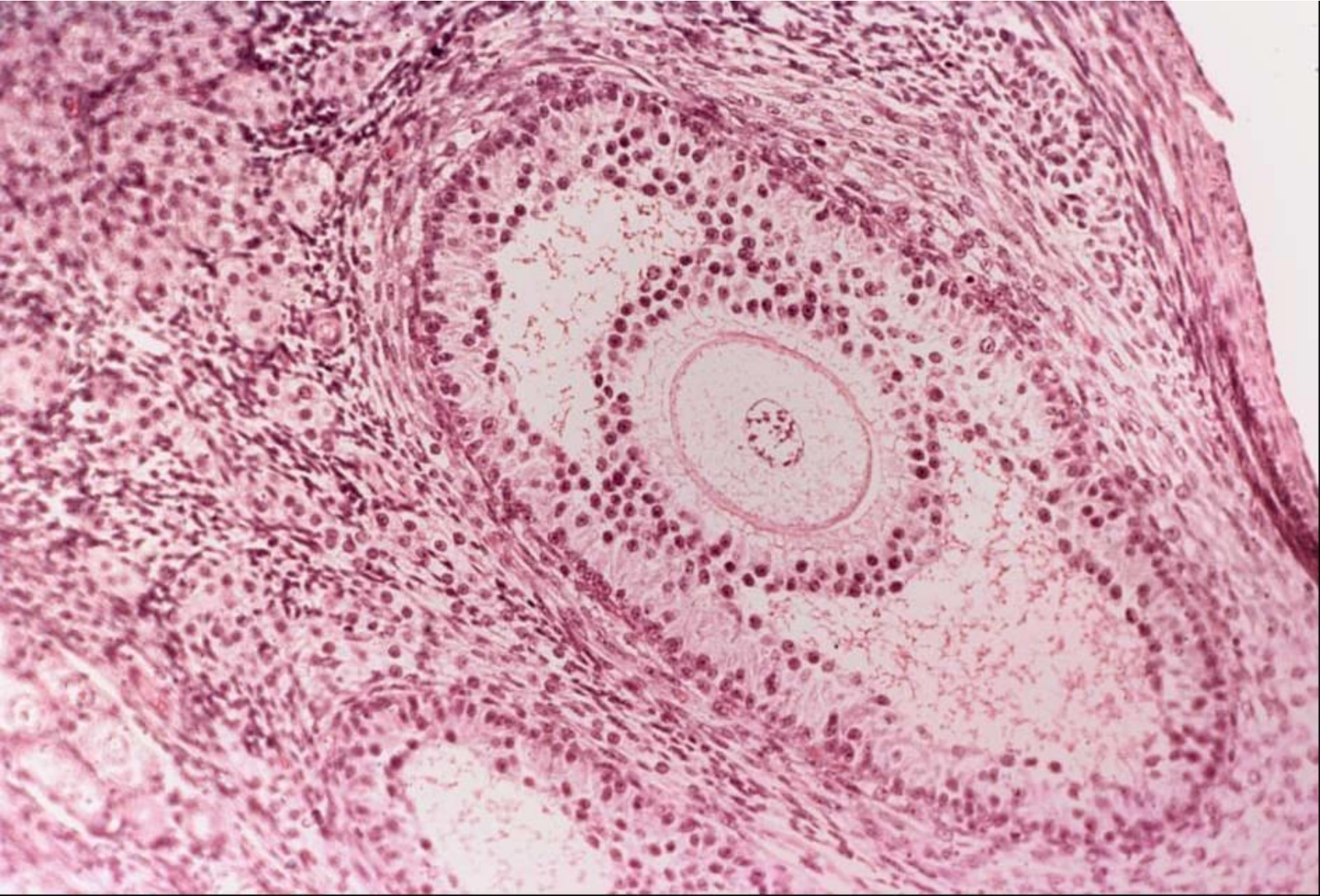


ovariální folikul -TEM

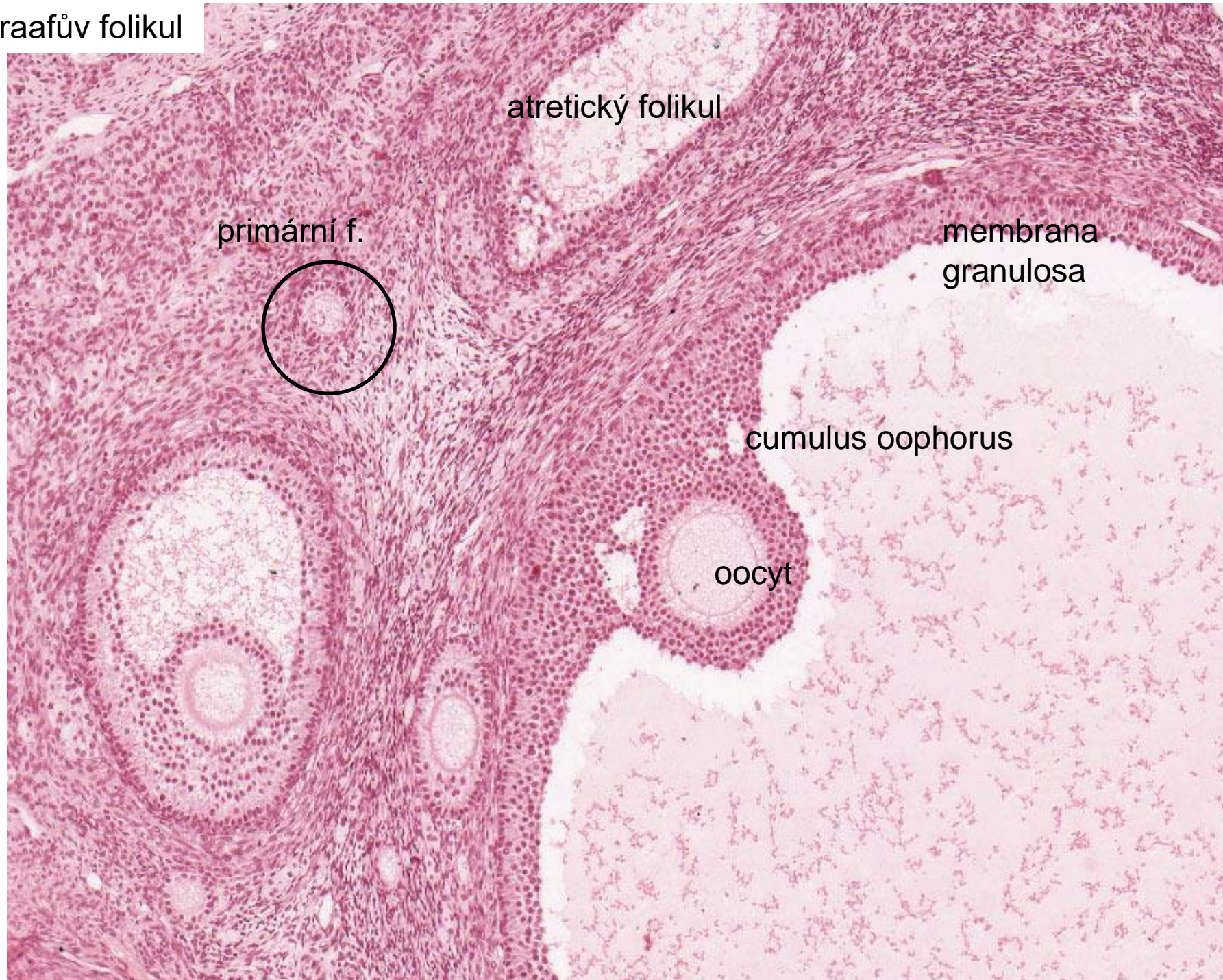


2 μ m

sekundární folikul



Graafův folikul



zárodečný epitel

tunica albuginea

theca f. externa

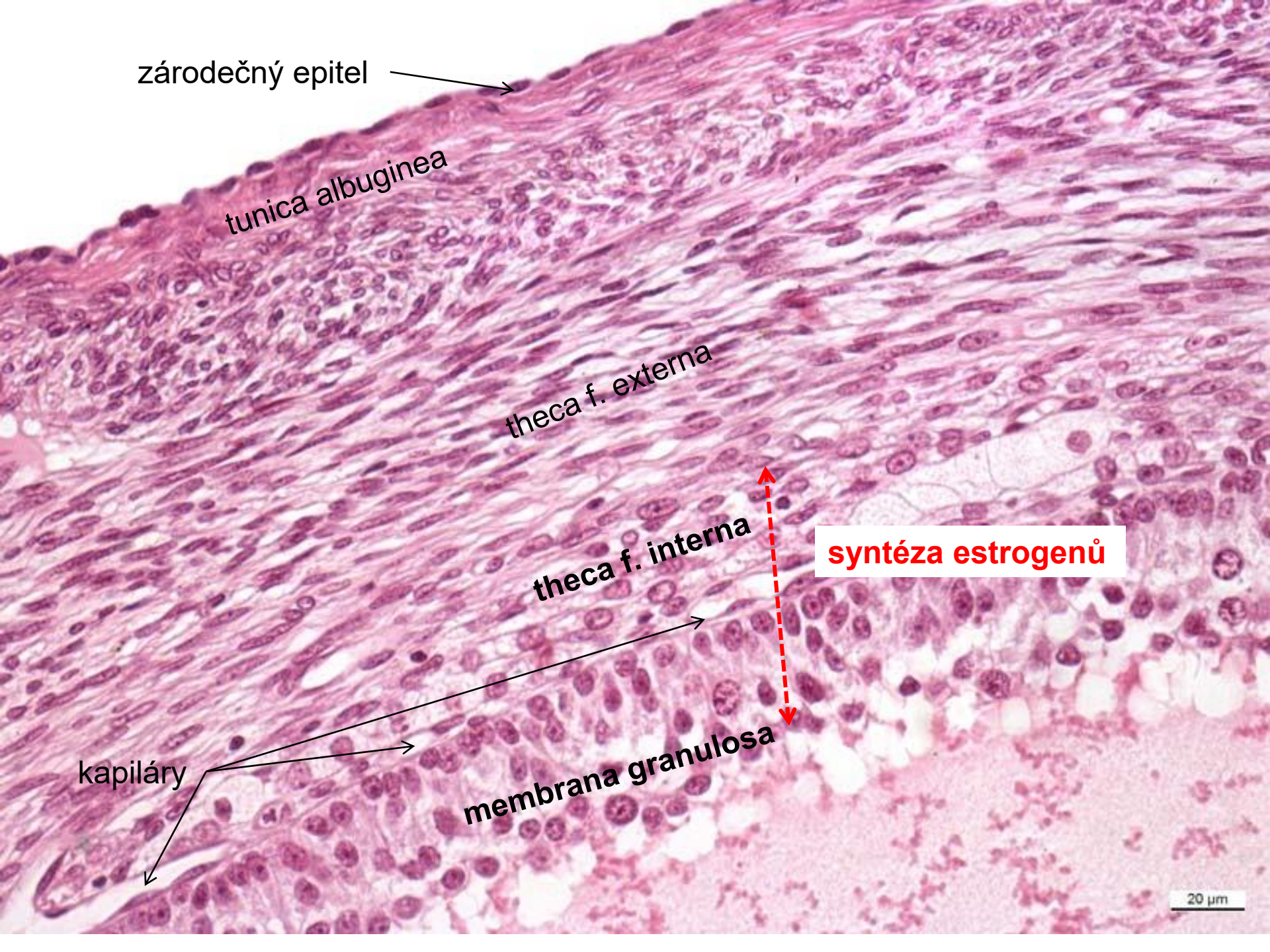
theca f. interna

kapiláry

membrana granulosa

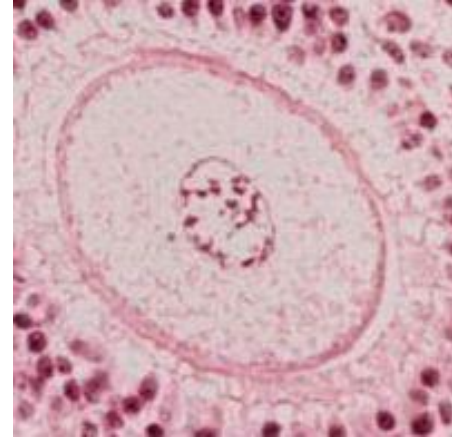
syntéza estrogenů

20 μm



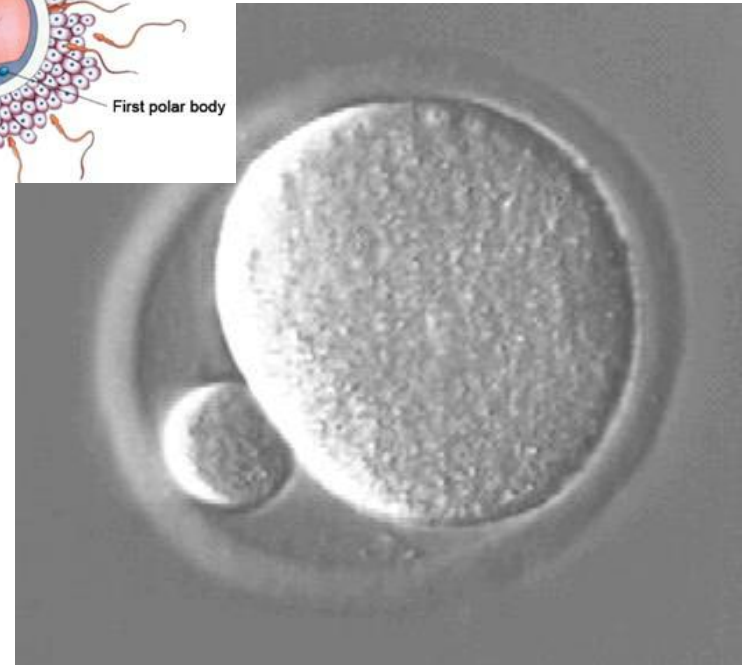
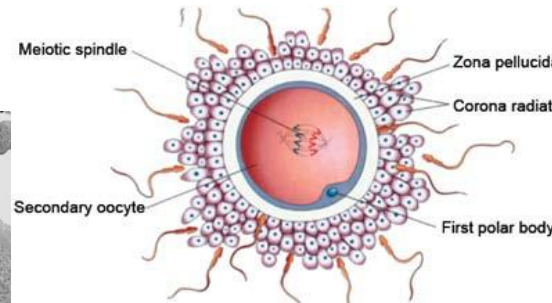
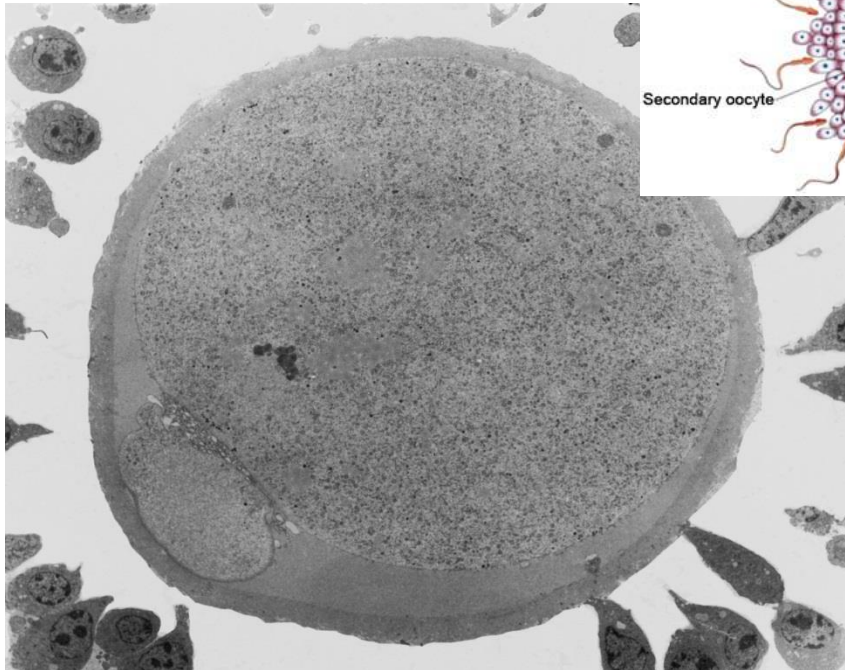
oocyt v průběhu 1. meiotického dělení

30 μm



130 μm

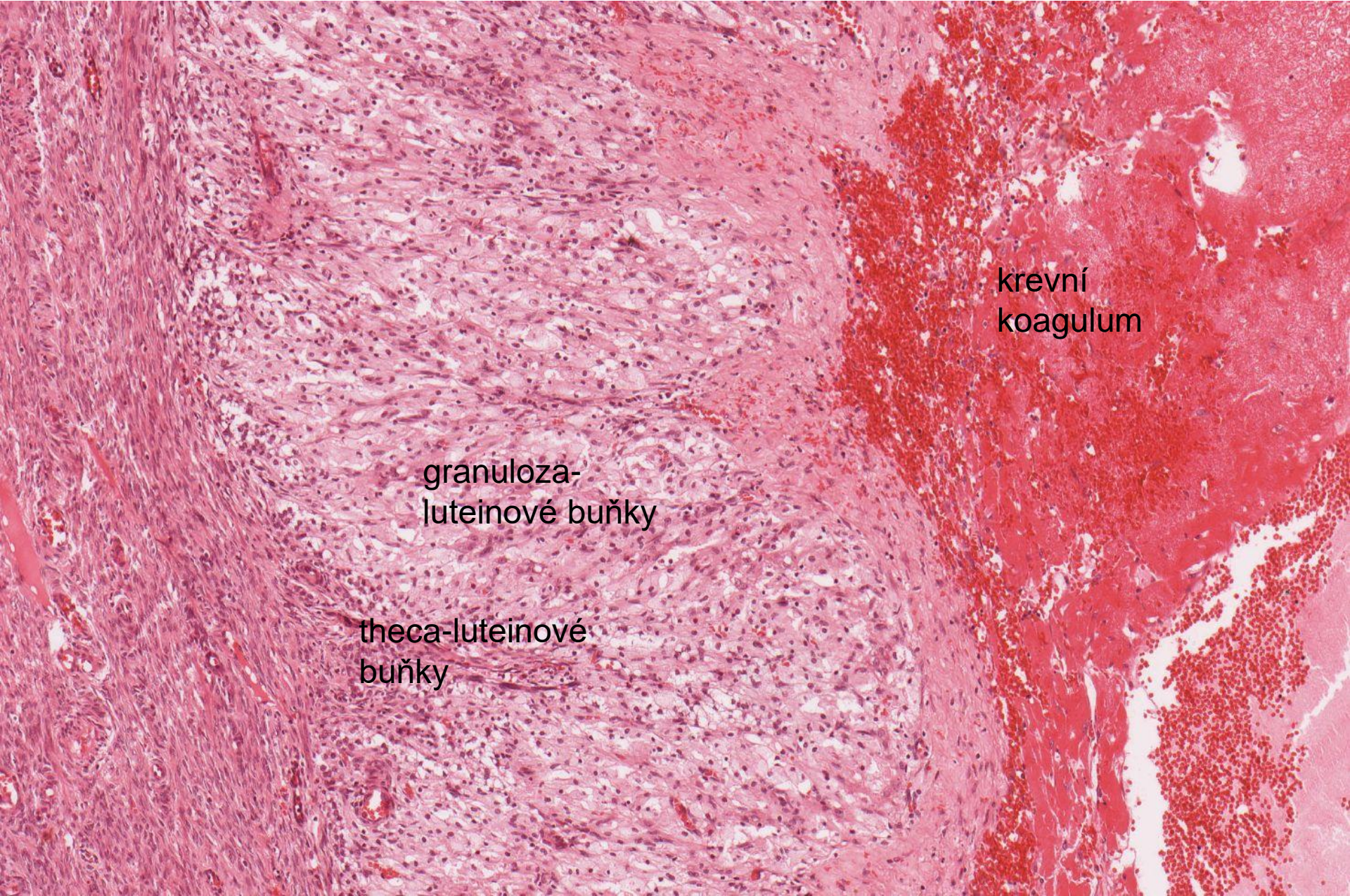
oocyt během ovulace



ovarium-corpora luteum



ovarium-corporis luteum

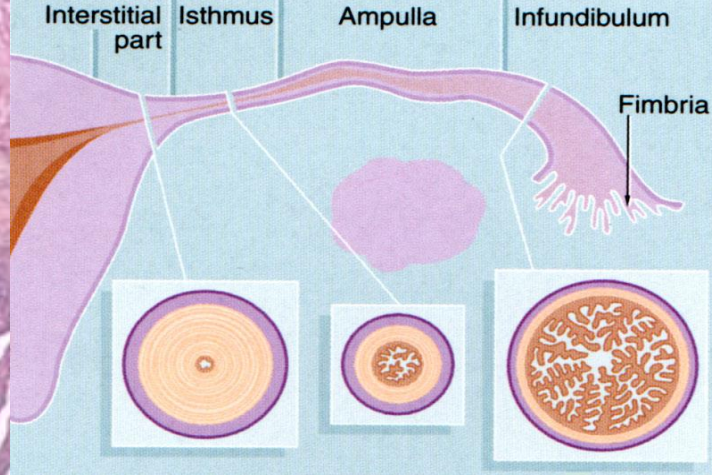


krevní
koagulum

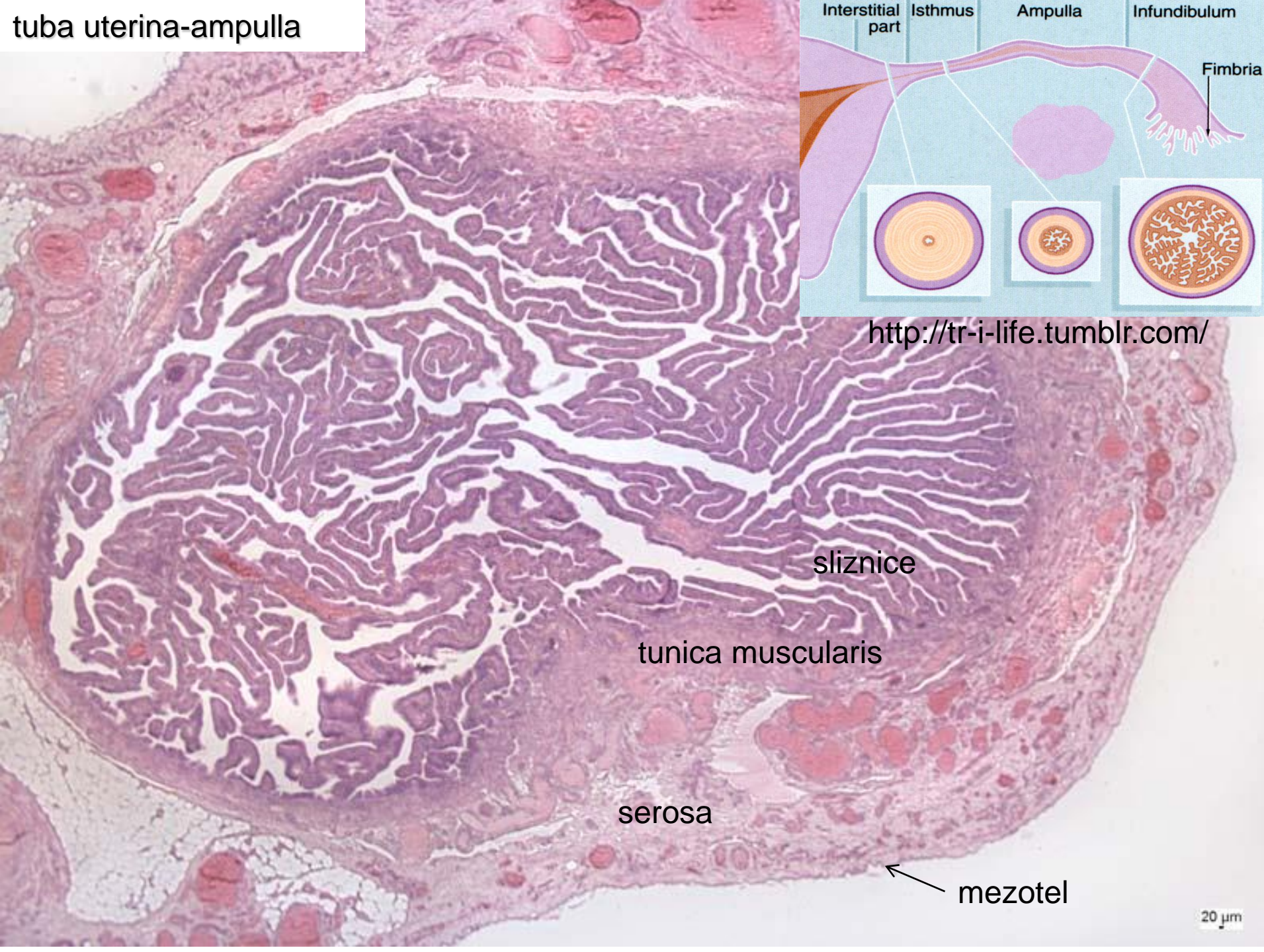
granuloza-
luteinové buňky

theca-luteinové
buňky

tuba uterina-ampulla



<http://tr-i-life.tumblr.com/>



sliznice

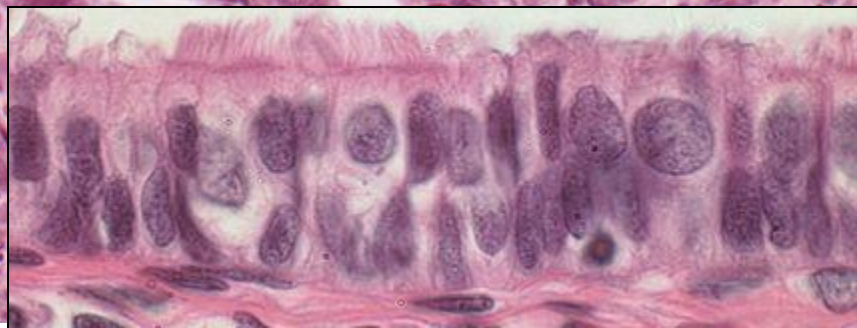
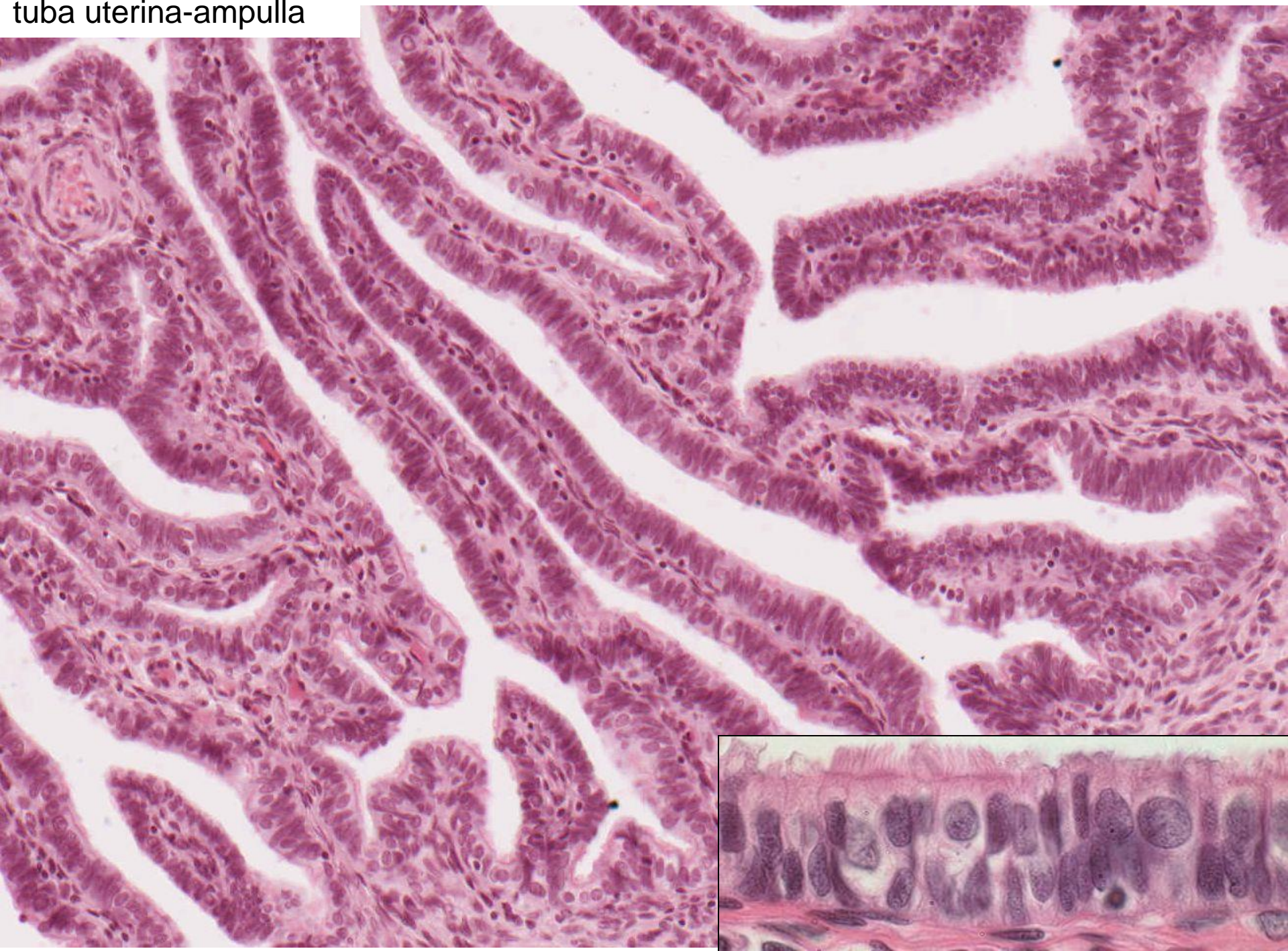
tunica muscularis

serosa

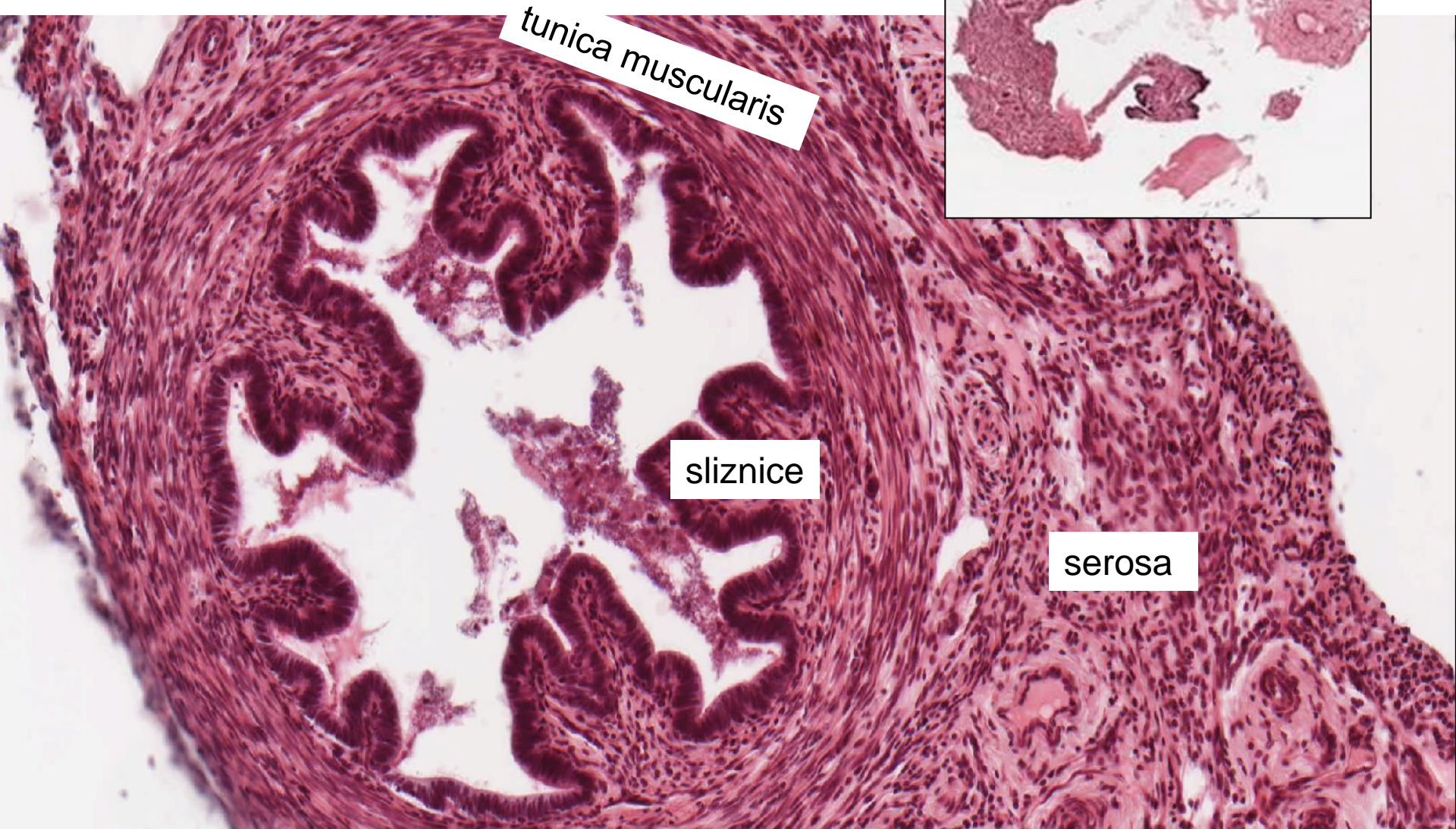
mezotel

20 μm

tuba uterina-ampulla



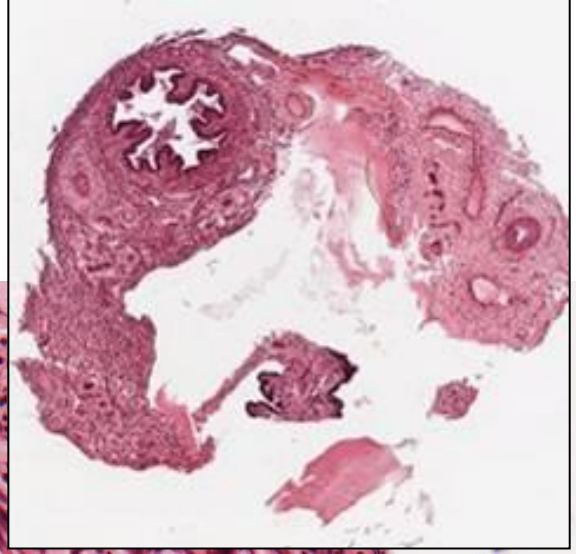
tuba uterina-isthmus

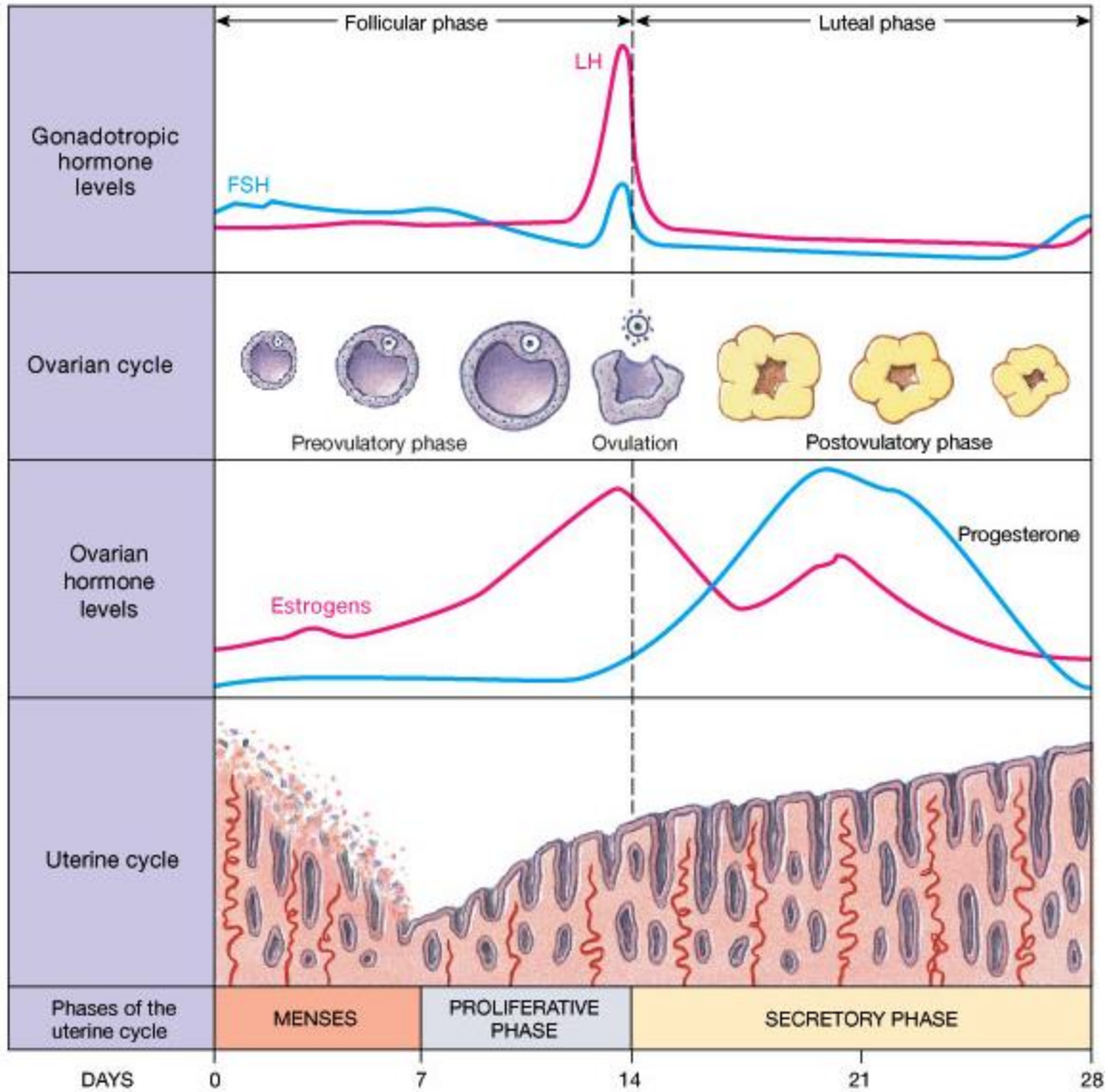


tunica muscularis

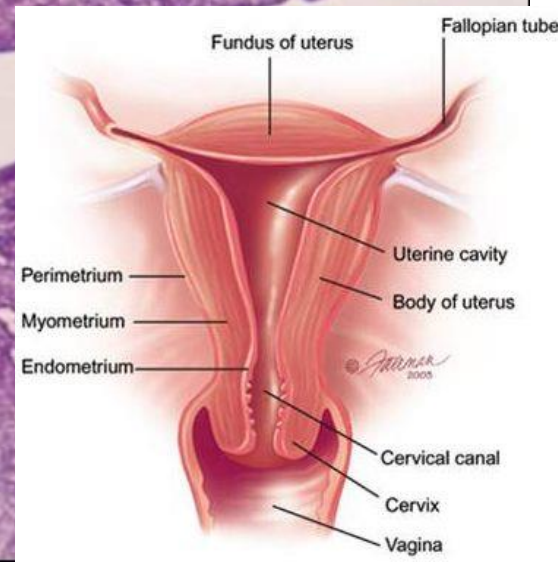
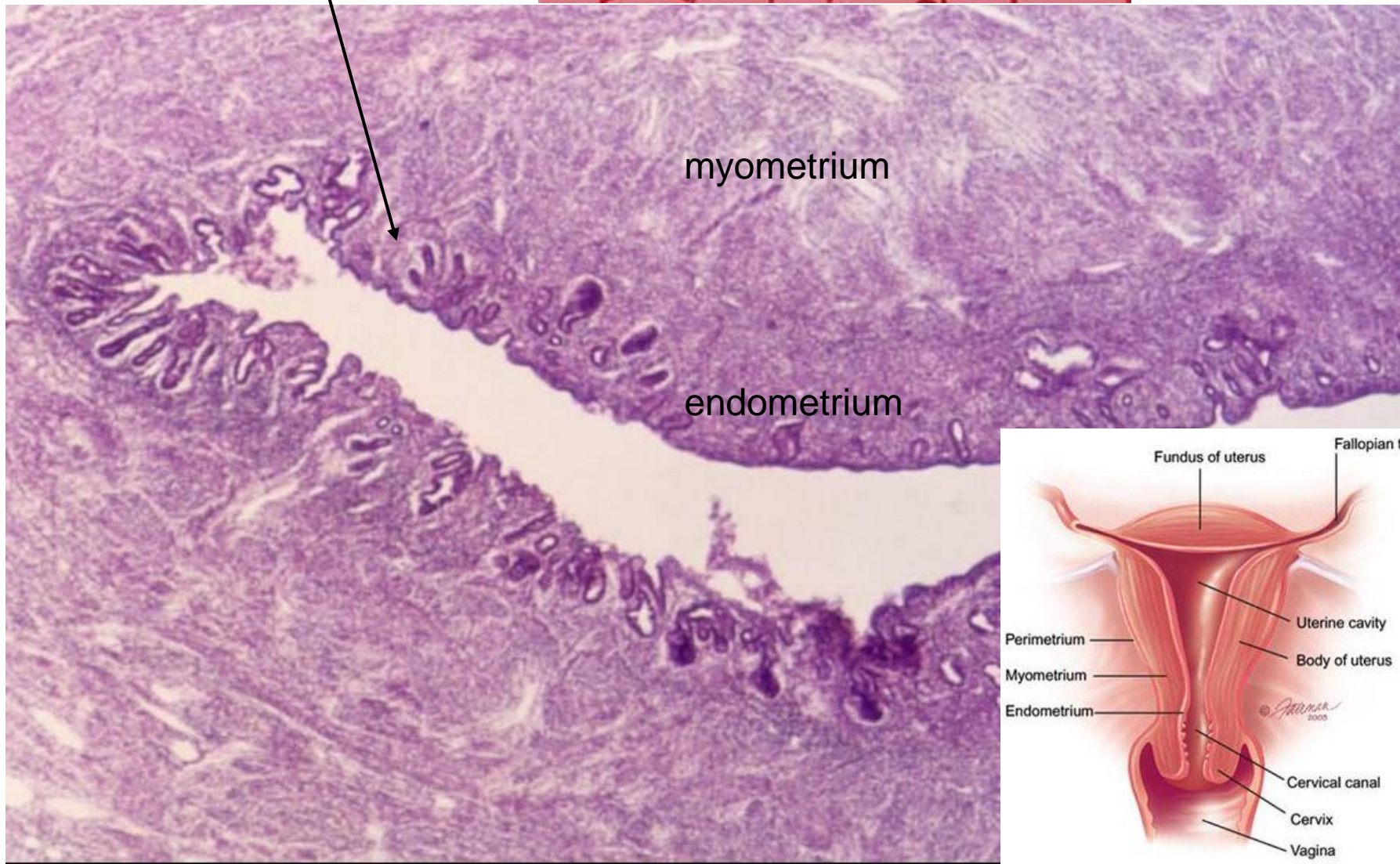
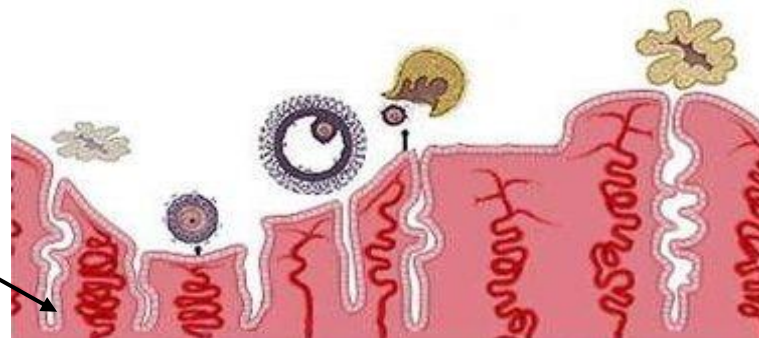
sliznice

serosa



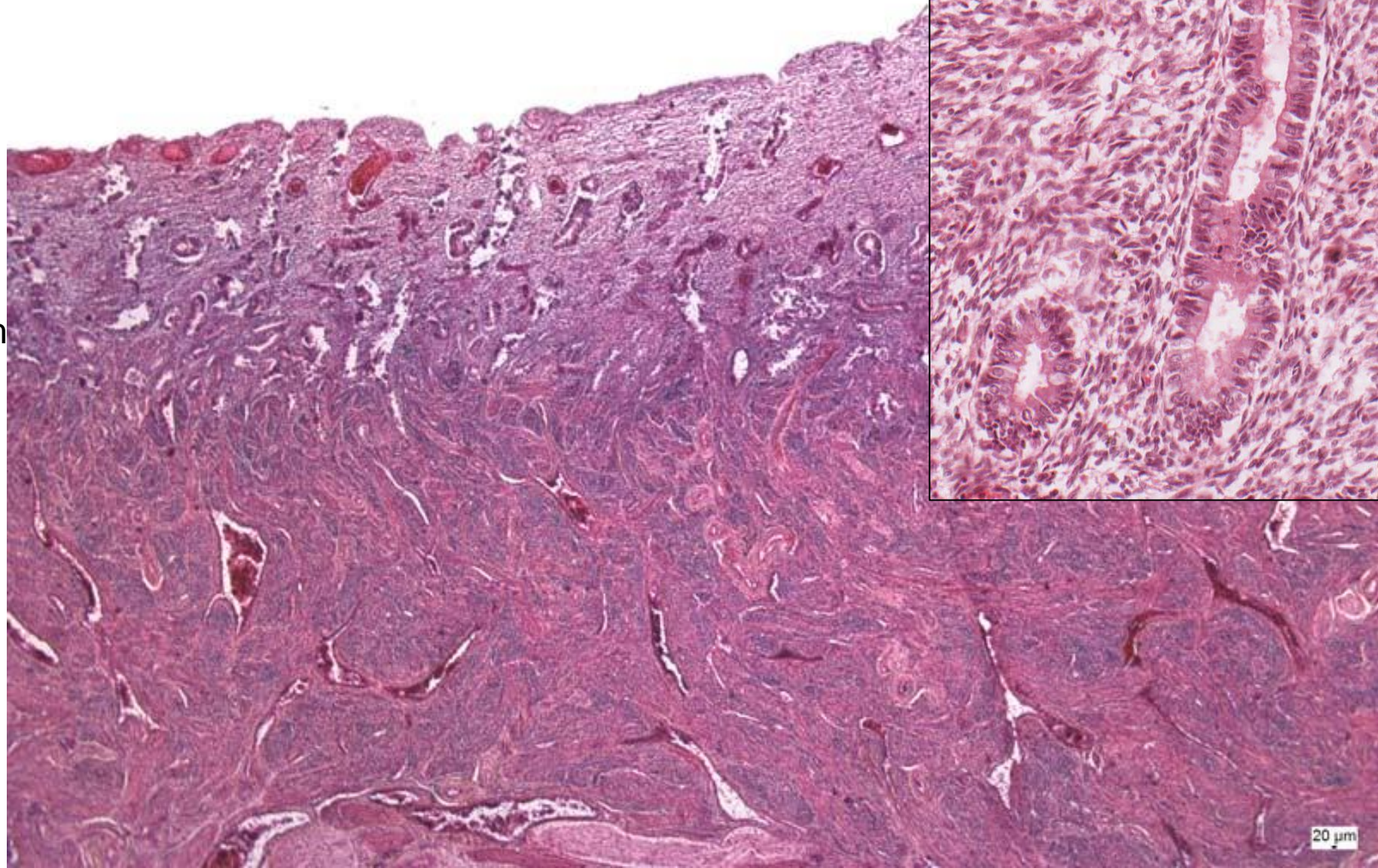


Ovariální a menstruační cyklus

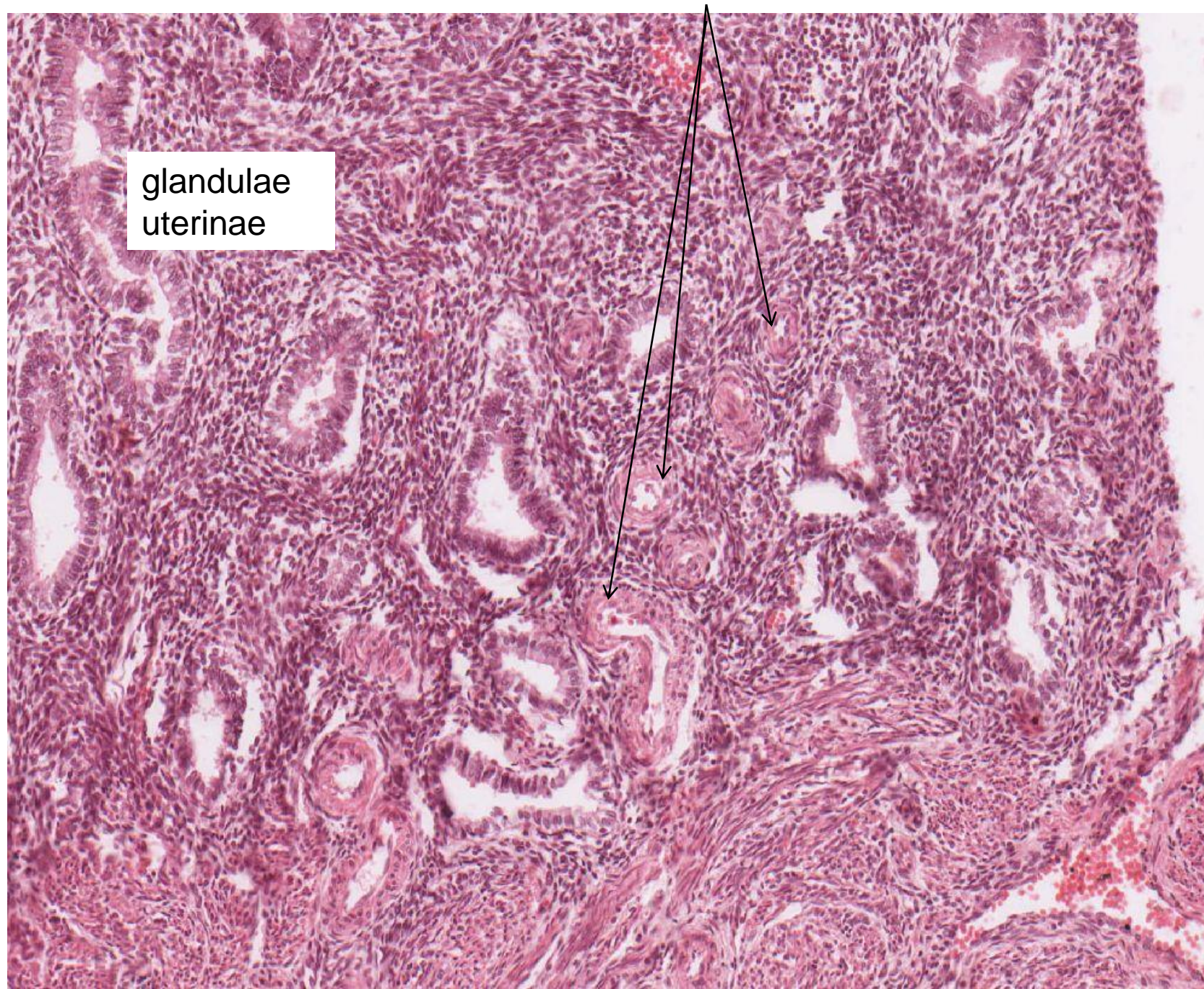


**Endometrium – proliferační fáze
– glandulae uterinae**

3-4
mm

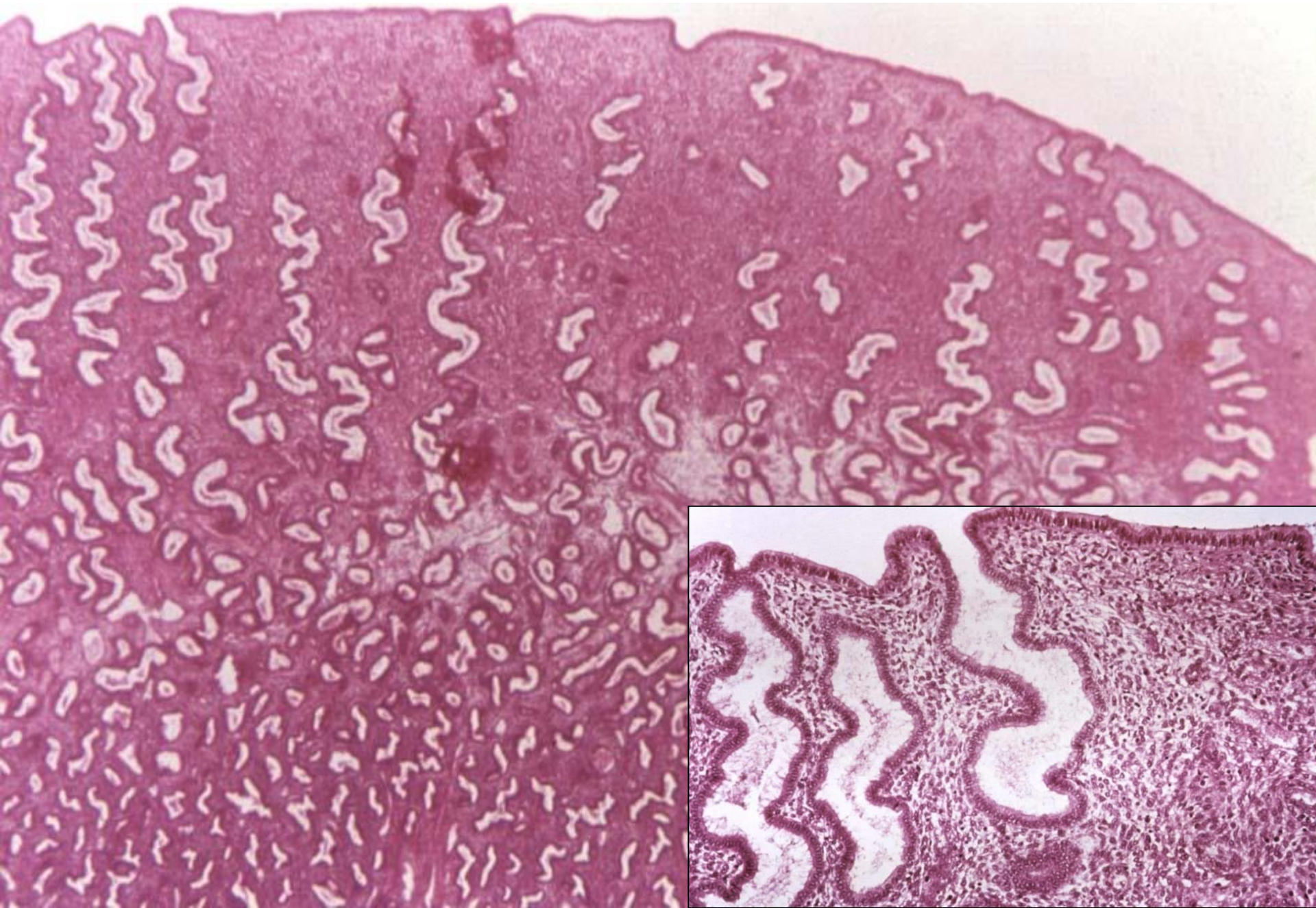


Endometrium – proliferační fáze – arteriae helicinae, buněčné vazivo



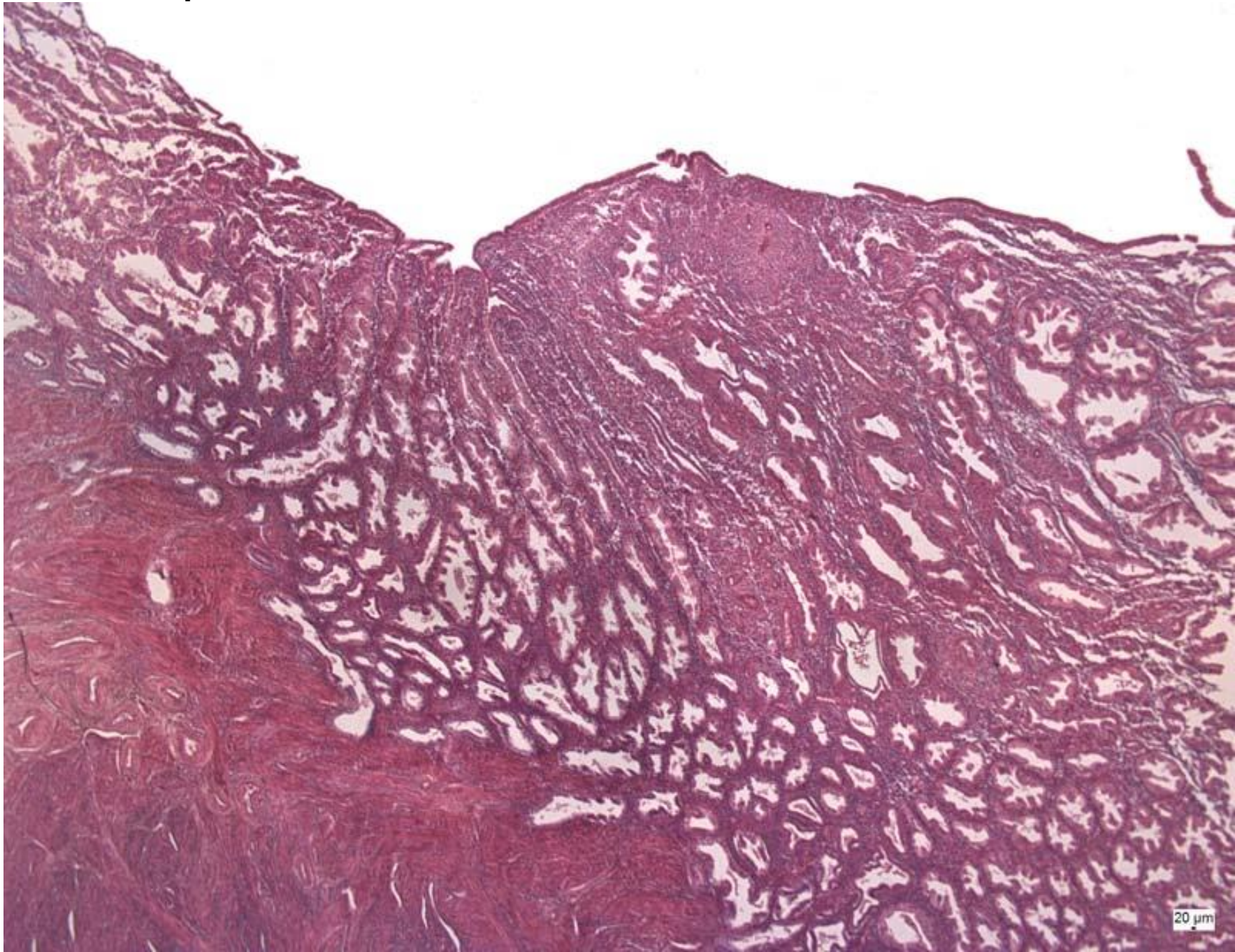
glandulae
uterinae

Endometrium – začátek sekreční fáze

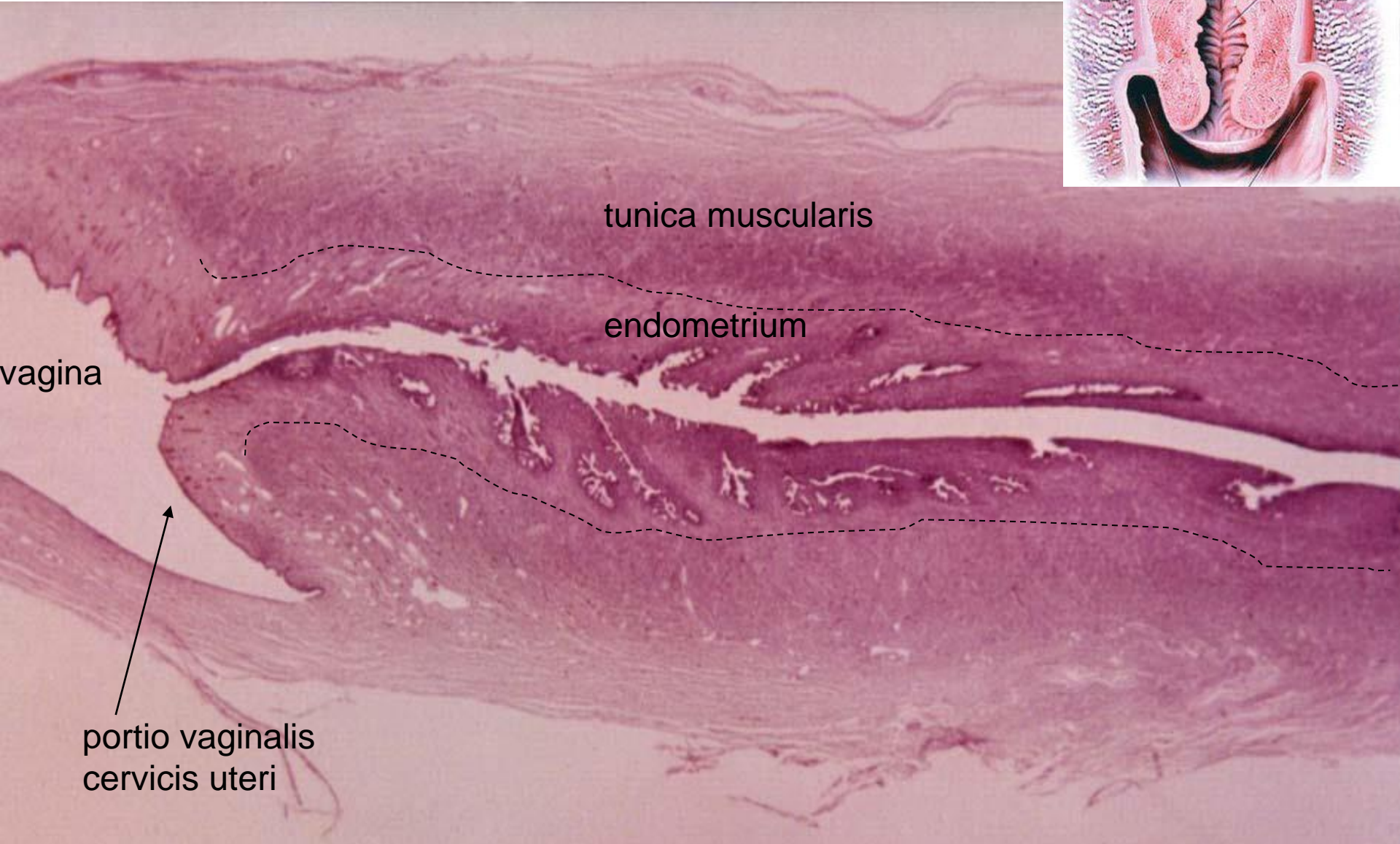
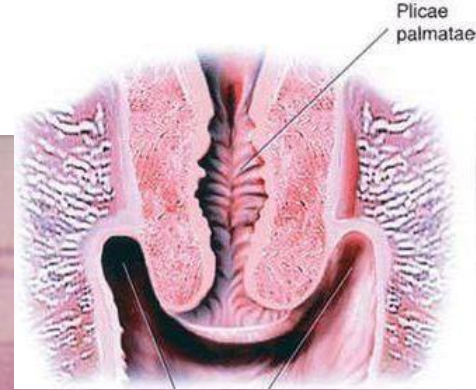


Endometrium – pokročilá sekreční fáze

5-7
mm



Cervix uteri



glandulae cervicales – cervikální hlen

Portio vaginalis cervicis uteri - přechod epitelů

jednovrst.cyl.epi (endocervix)

vrst.dlažd.epi (ektocervix)





ŽENSKÝ POHLAVNÍ SYSTÉM I

Preparáty:

- 42. Ovarium
- 43. Ovarium – kočka
- 44. Corpus luteum
- 45. Tuba uterina – ampulla
- 46. Tuba uterina – isthmus
- 47. Uterus – proliferativní fáze
- 48. Uterus – sekreční fáze

Atlas EM:

- Lidský primární ovariální folikul (72)
- Od gamet po časné embryo (74)