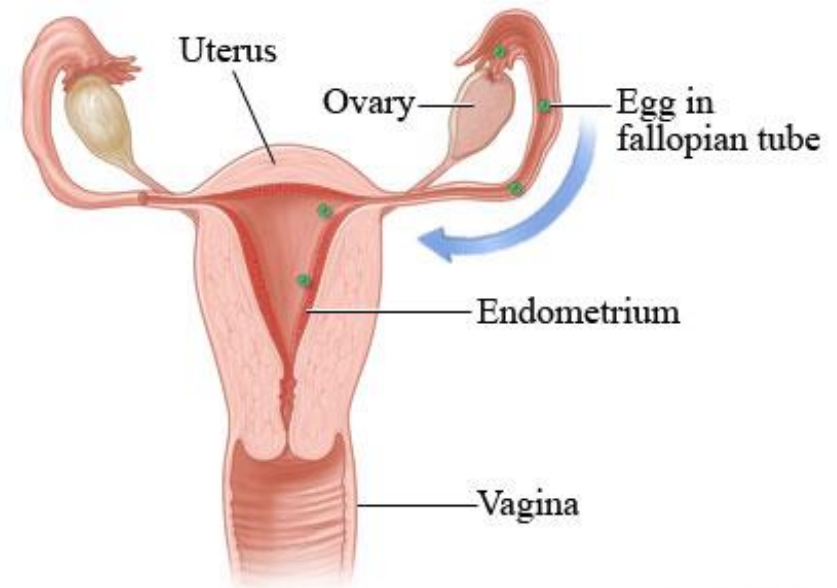


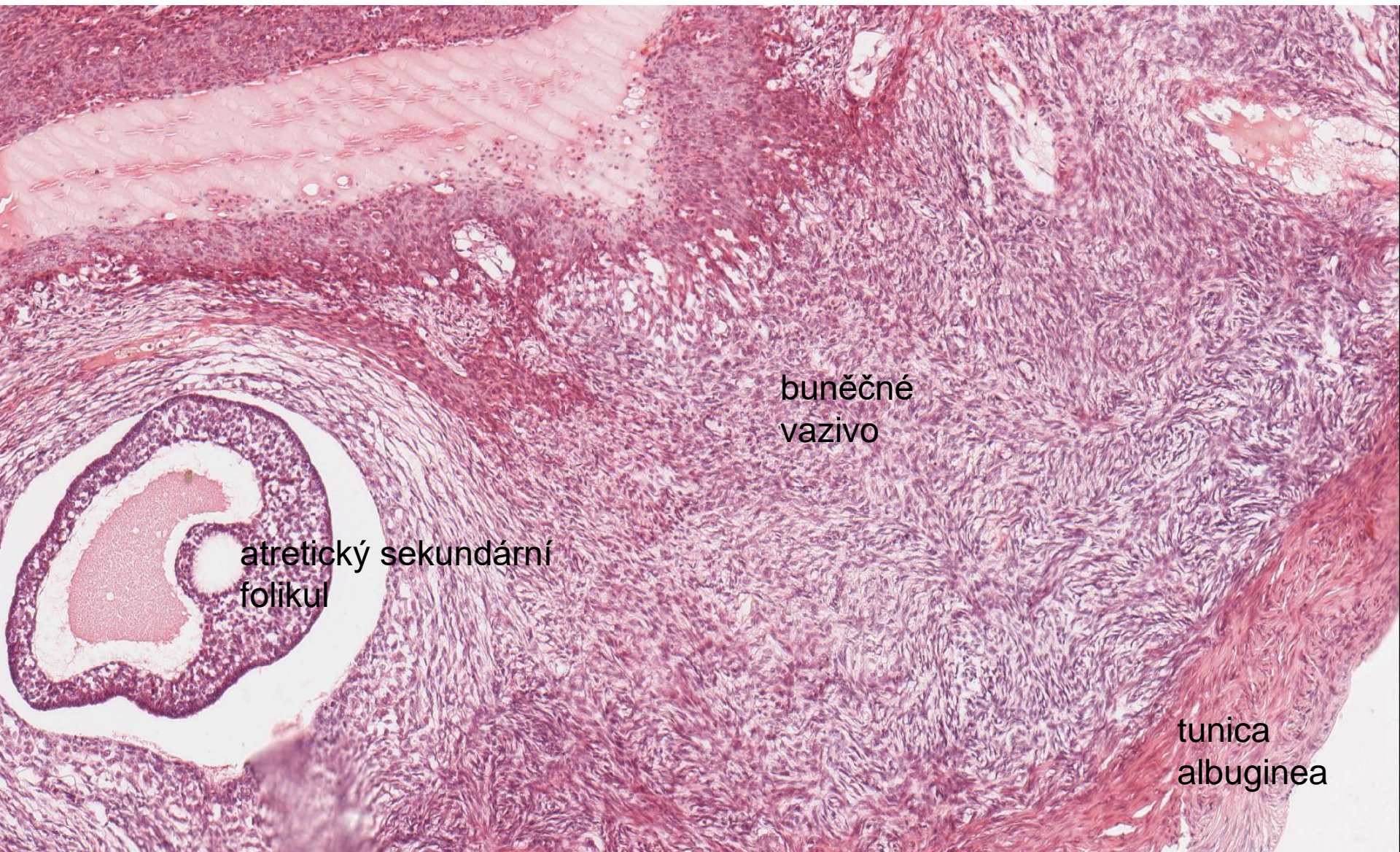


ŽENSKÝ POHLAVNÍ SYSTÉM I

- **vaječník** (*ovarium, oophoron*)
- **vejcovod** (*tuba uterina, tuba Fallopii, salpinx*)
- **děloha** (*uterus, metra, hystera*)



Ovarium - člověk

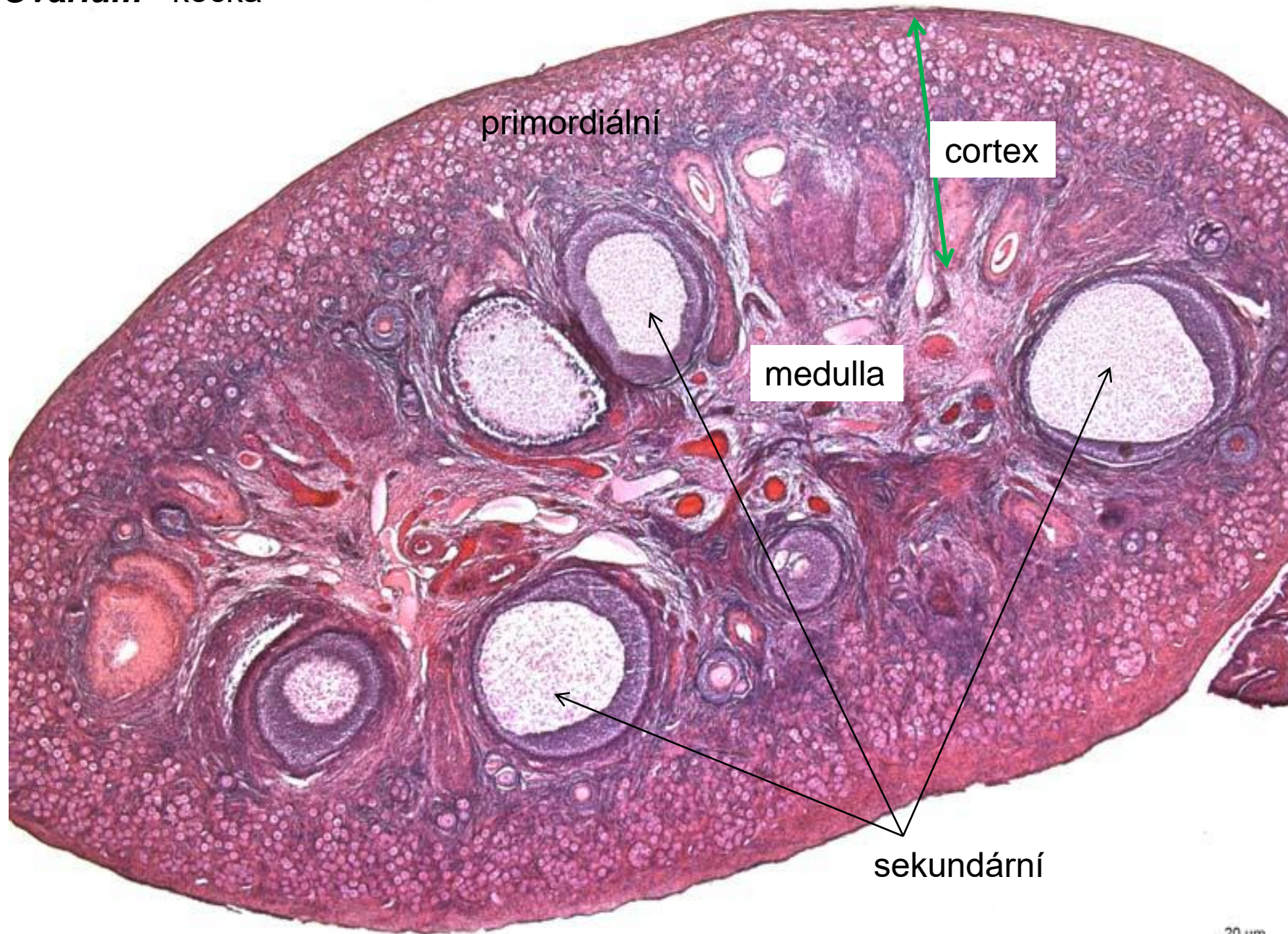


buněčné
vazivo

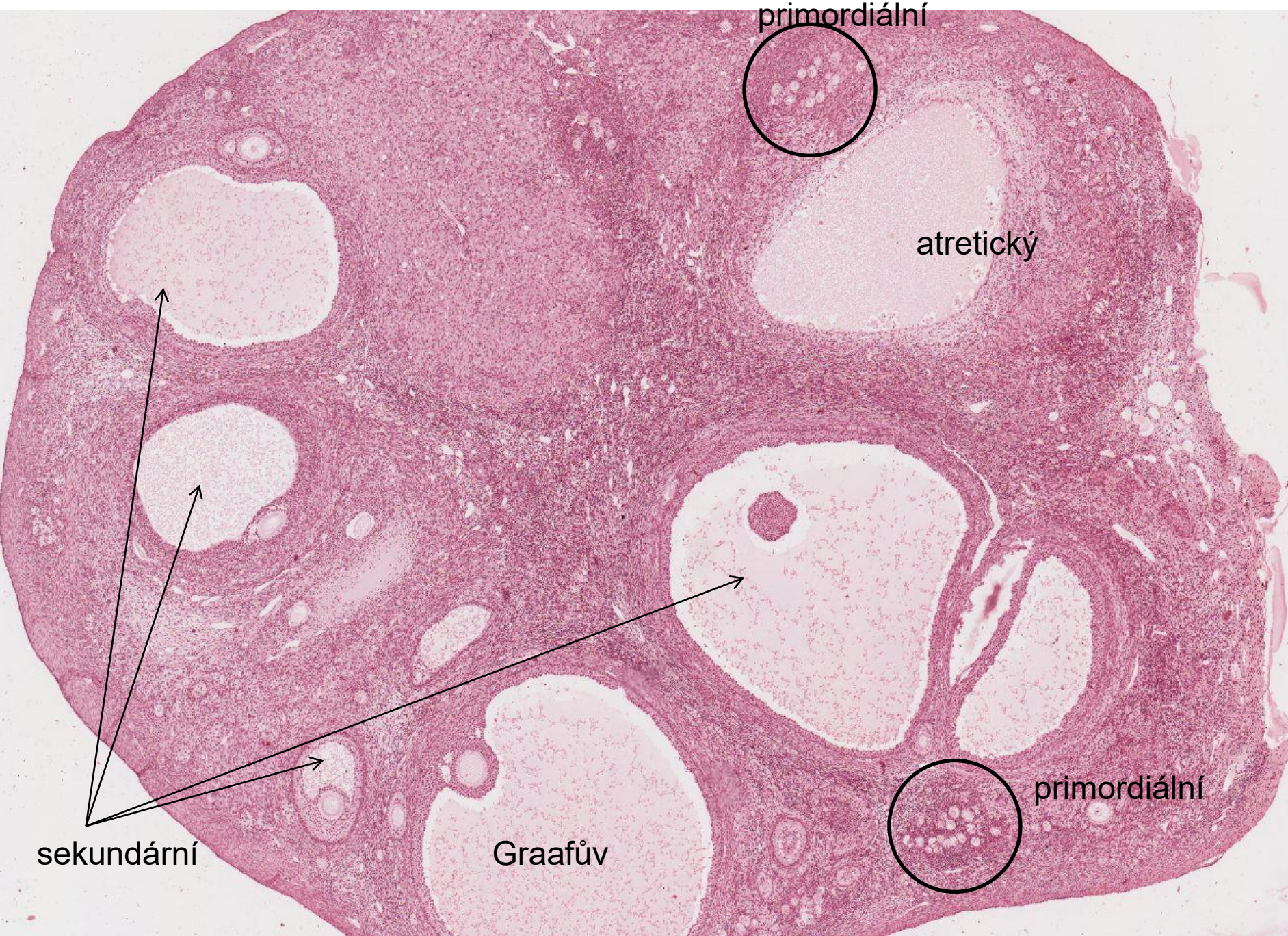
atretický sekundární
folikul

tunica
albuginea

Ovarium - kočka



Ovarium - kočka



primordiální

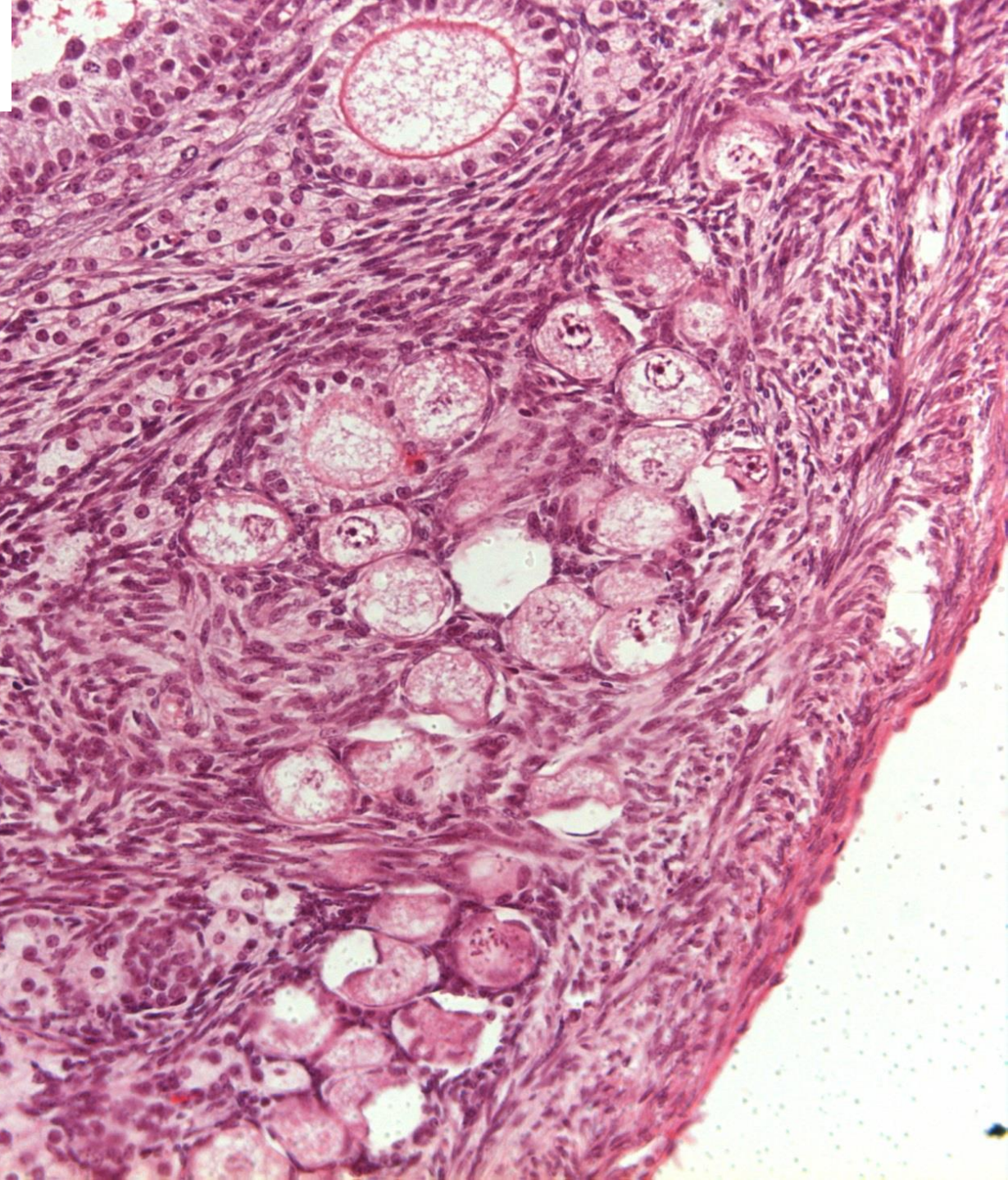
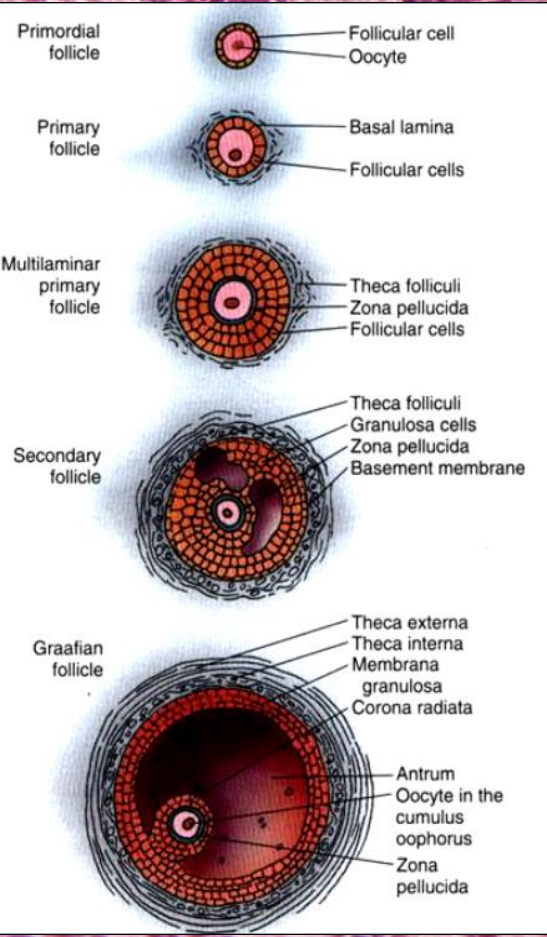
atretický

primordiální

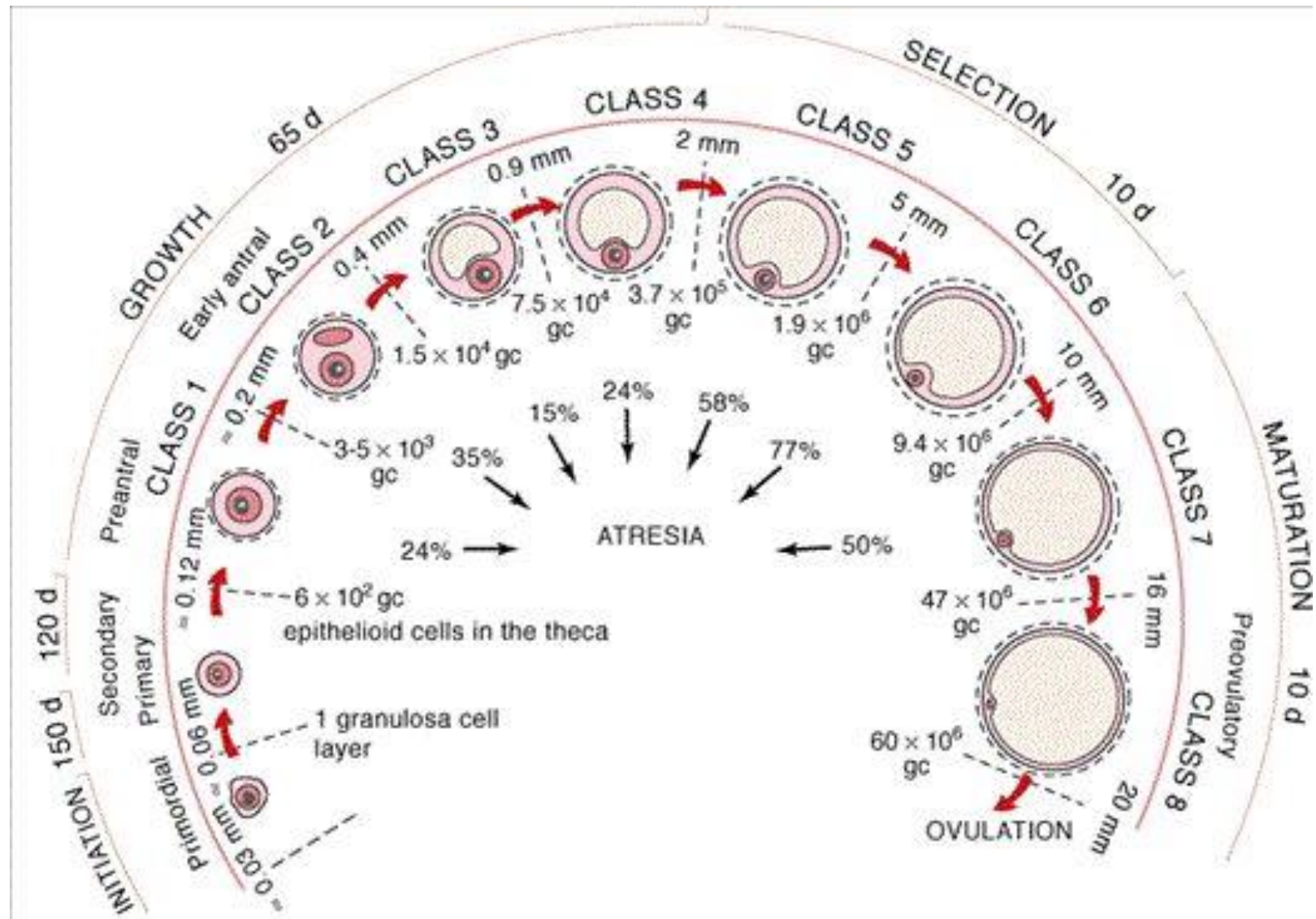
sekundární

Graafův

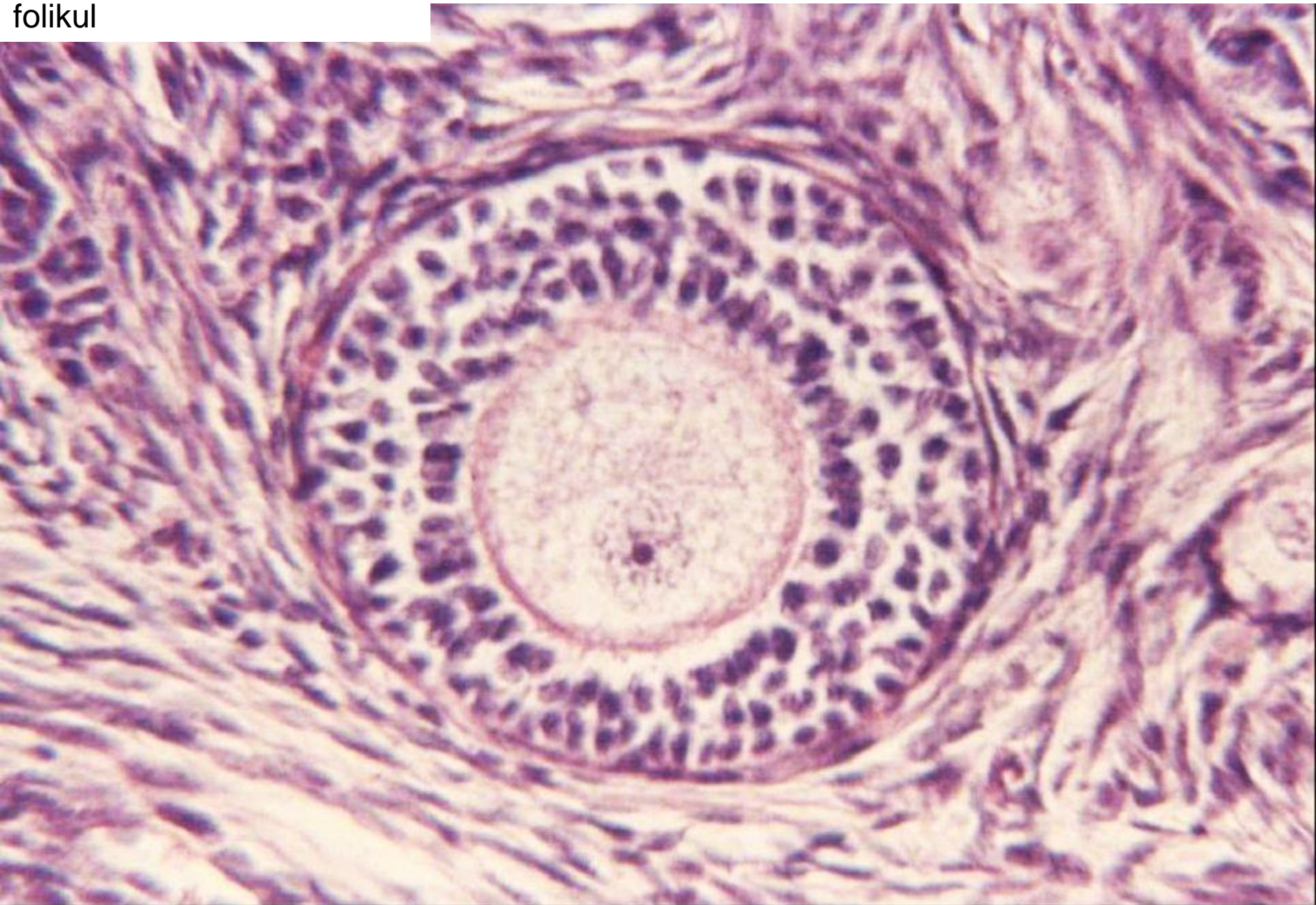
primordiální a primární unilaminární folikuly



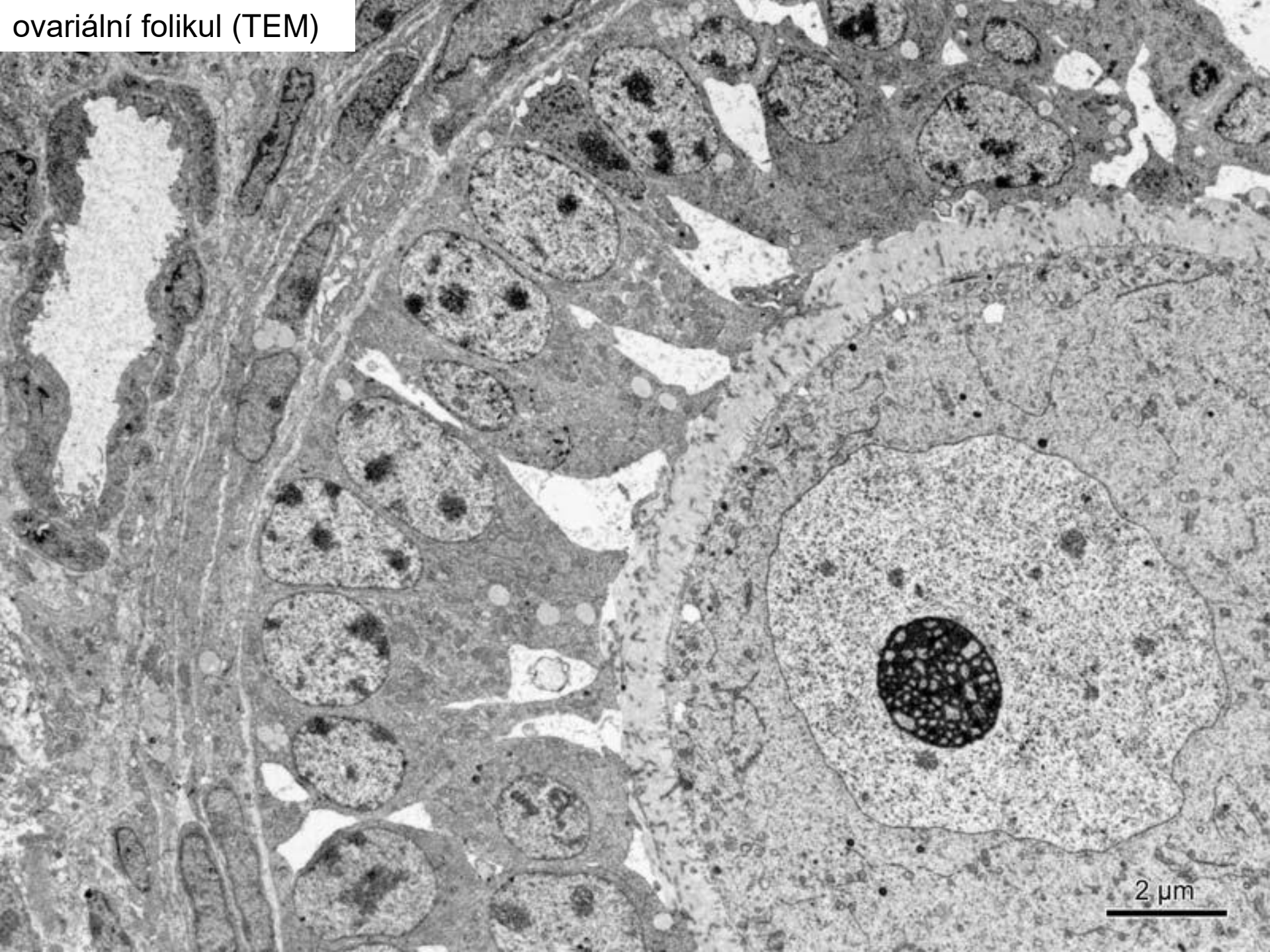
vývoj folikulů



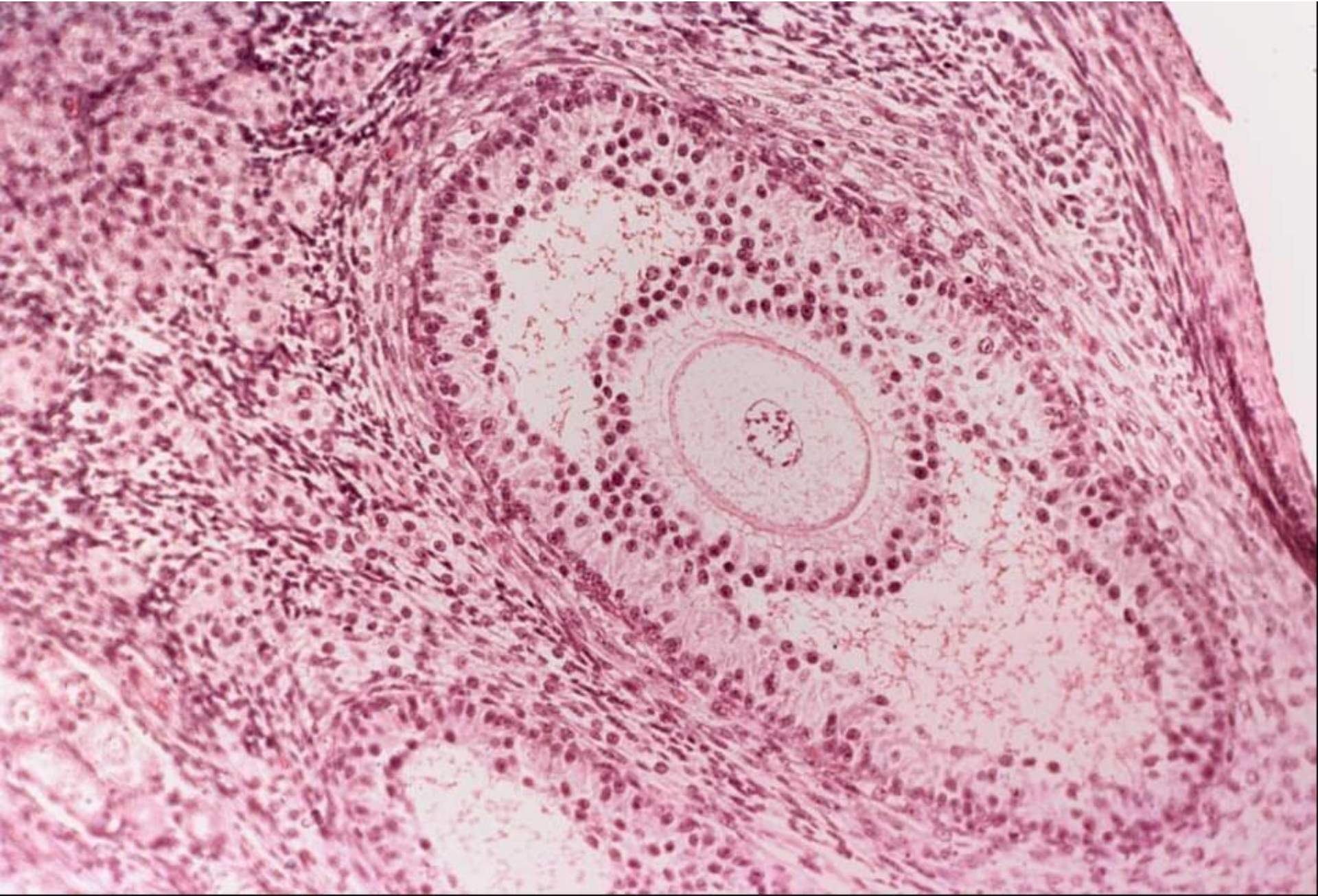
primární multilaminární
folikul



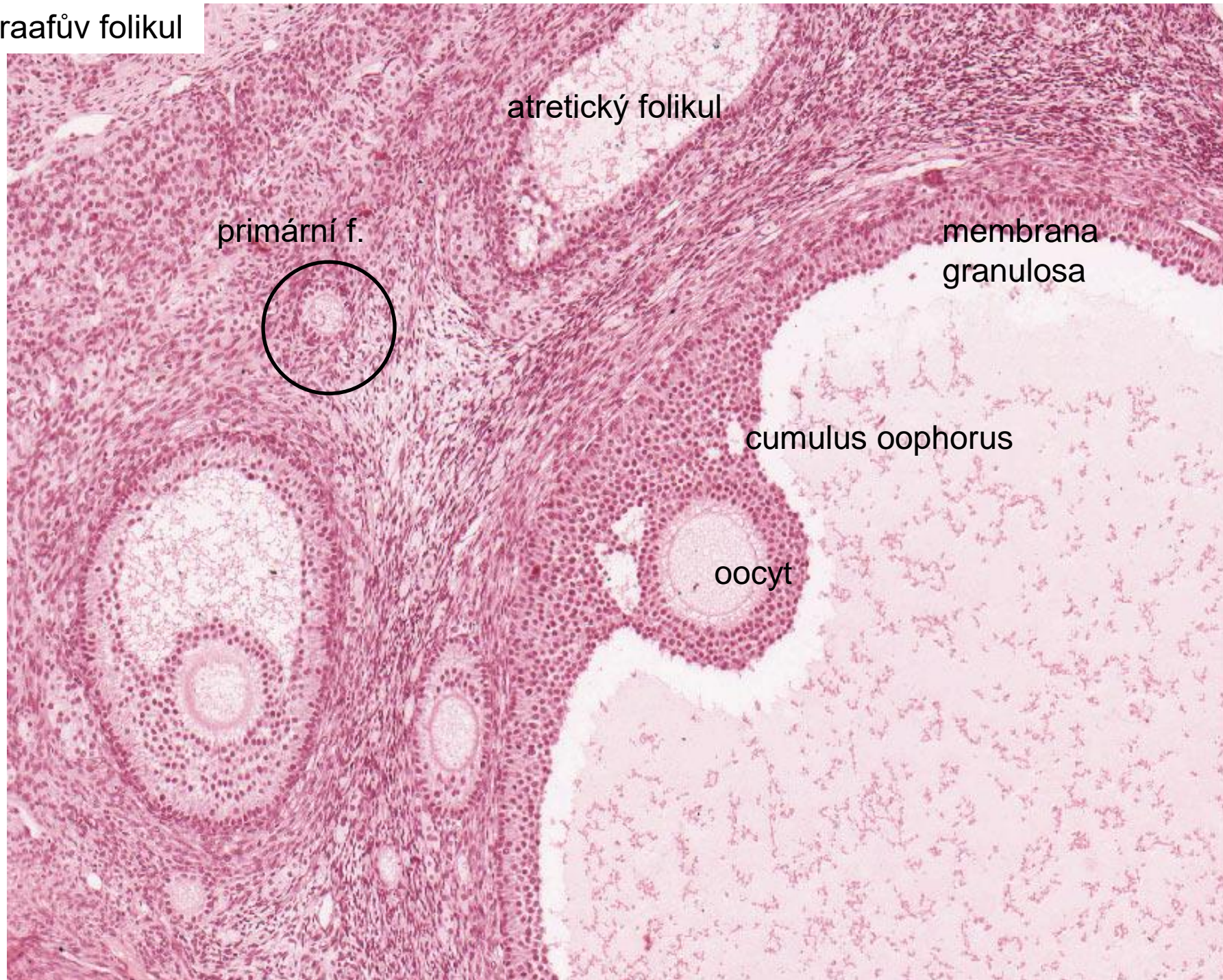
ovariální folikul (TEM)

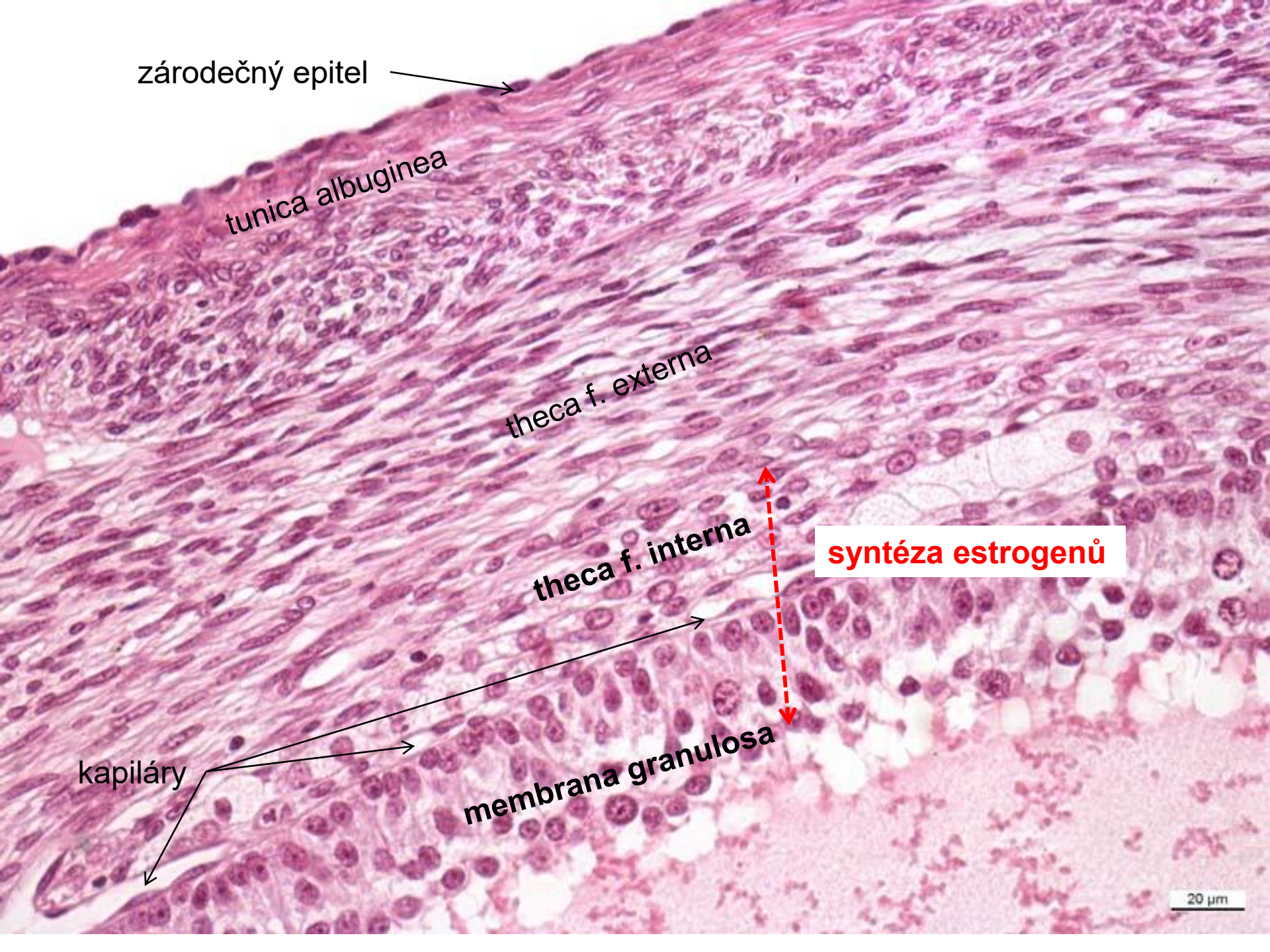


sekundární folikul



Graafův folikul





zárudečný epitel

tunica albuginea

theca f. externa

theca f. interna

syntéza estrogenů

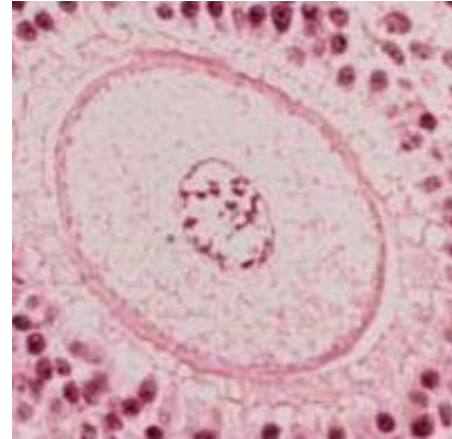
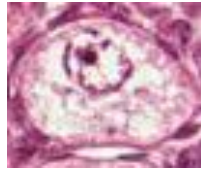
kapiláry

membrana granulosa

20 μm

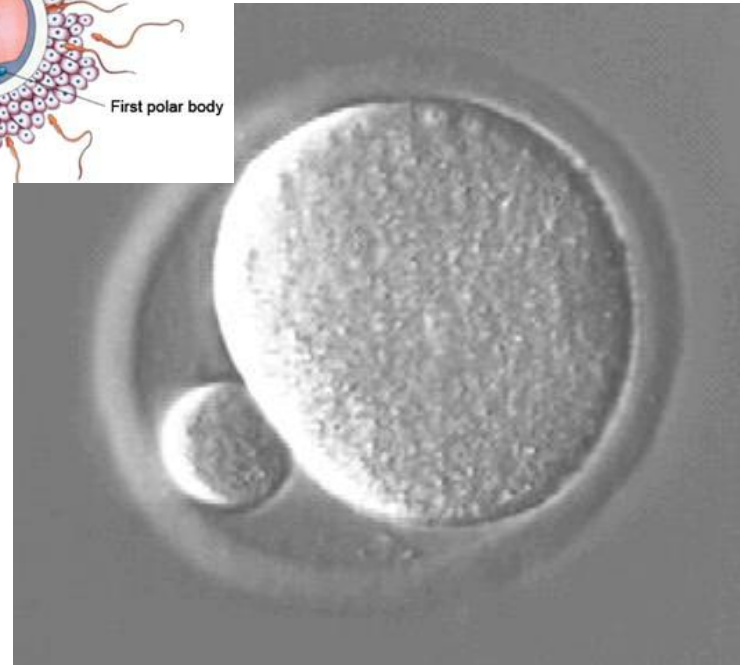
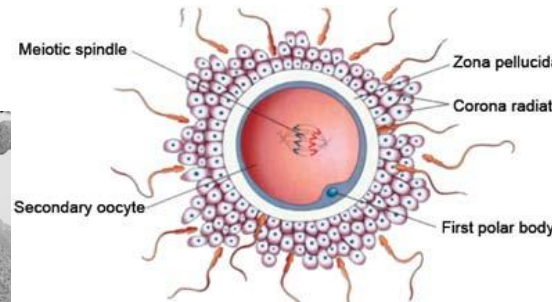
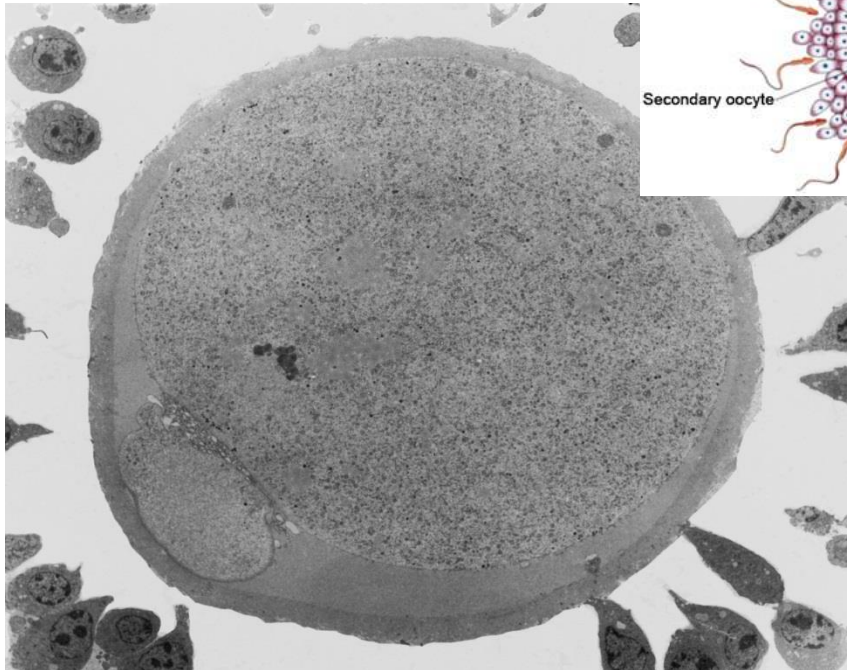
oocyt v průběhu 1. meiotického dělení

30 μm



130 μm

oocyt během ovulace



Ovarium - corpus luteum



Ovarium - corpus luteum

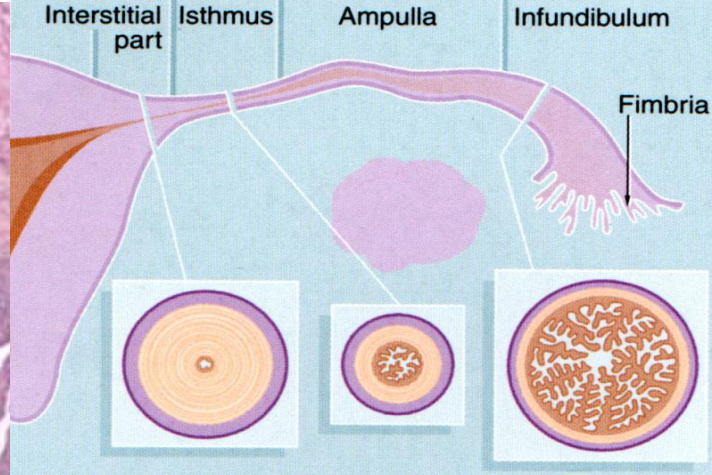


krevní
koagulum

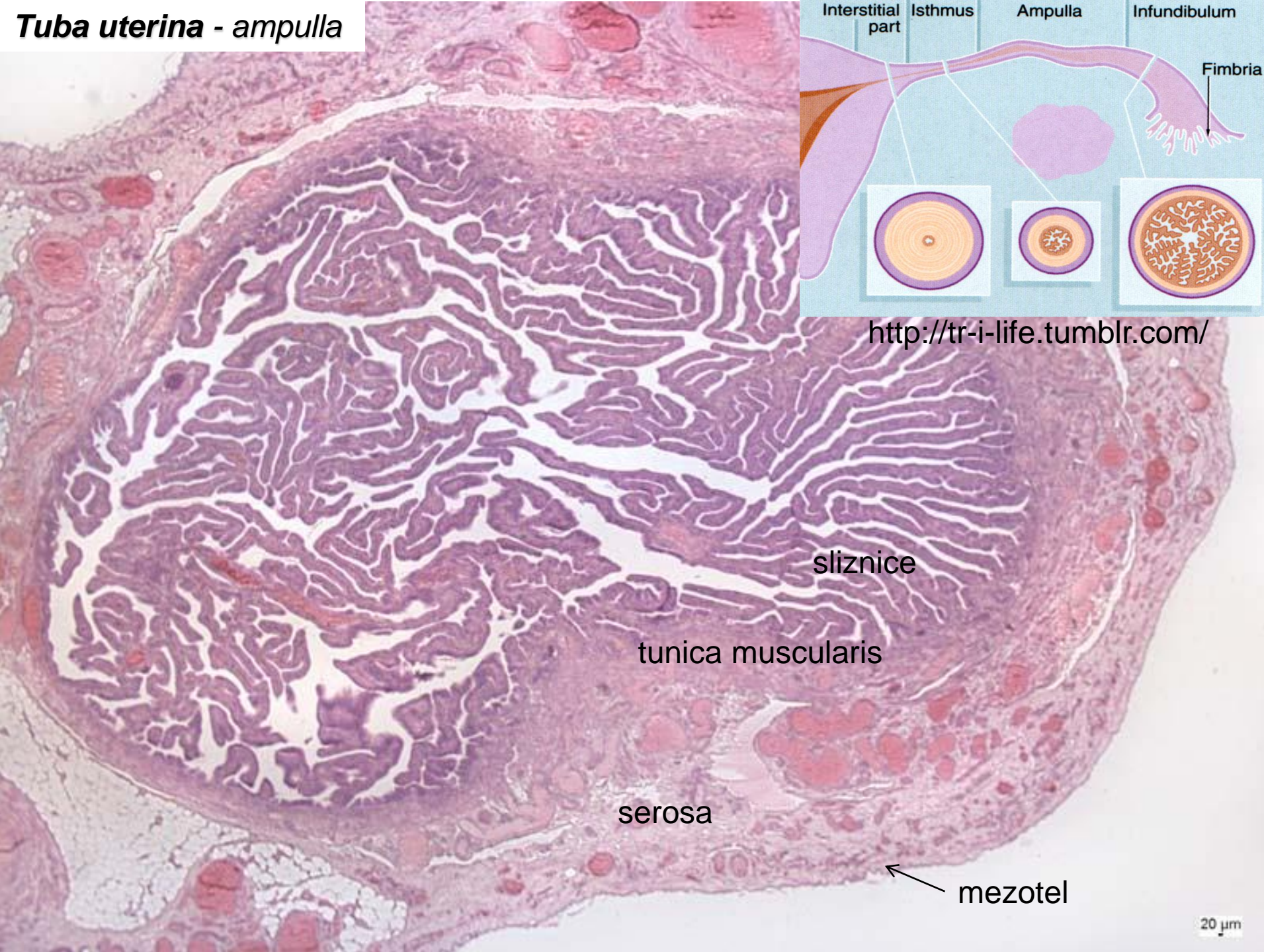
granuloza-
luteinové buňky

theca-luteinové
buňky

Tuba uterina - ampulla



<http://tr-i-life.tumblr.com/>



sliznice

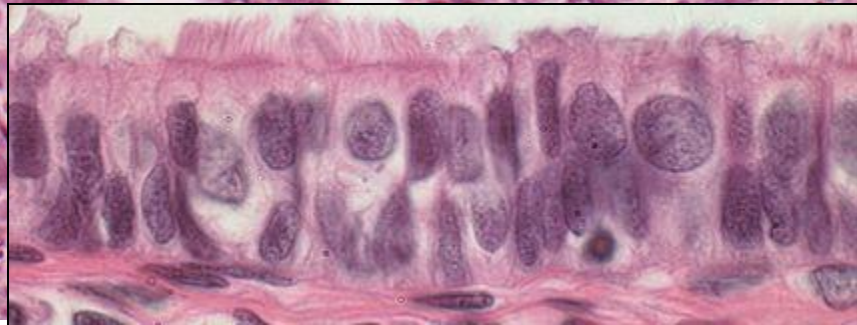
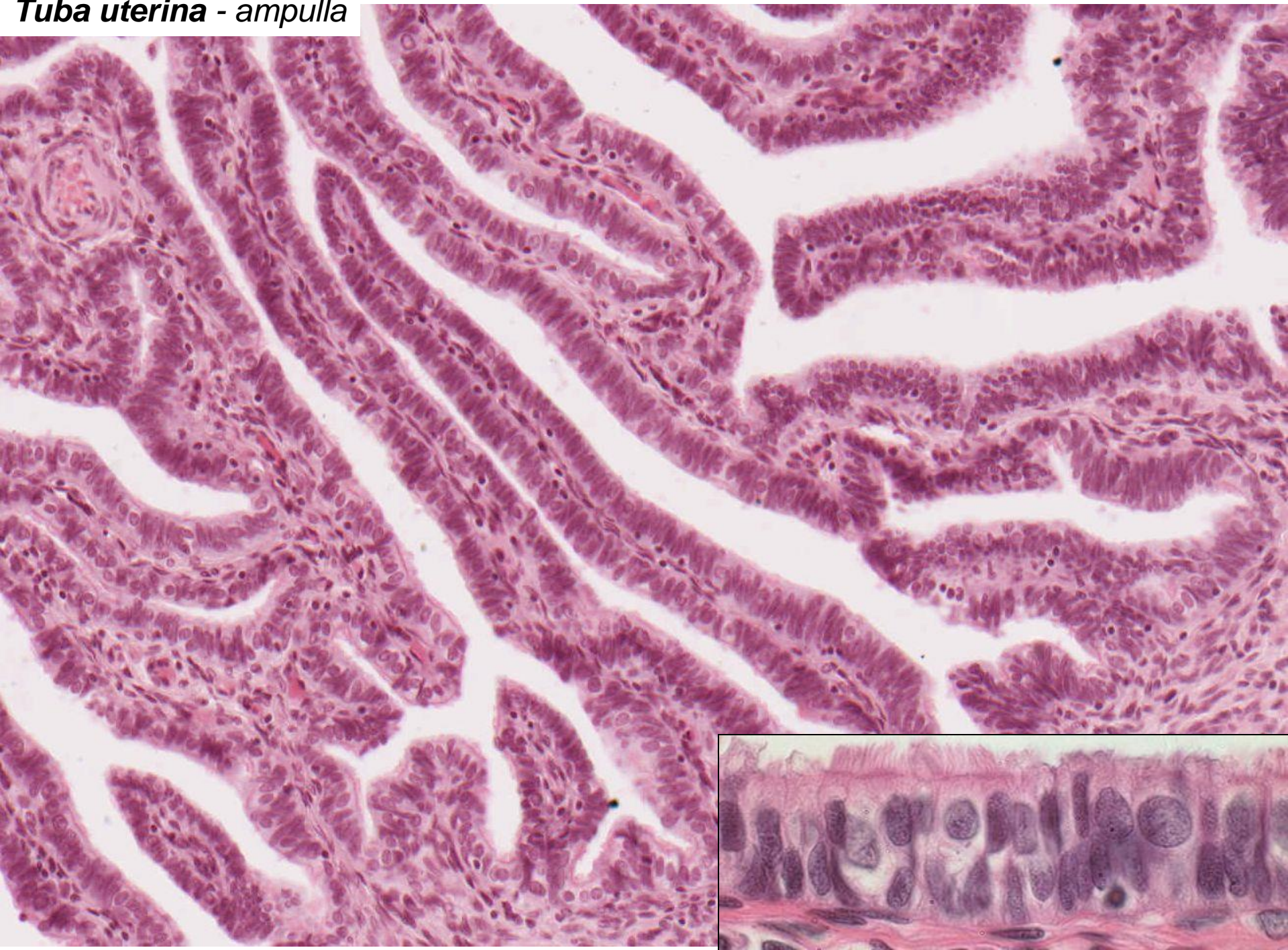
tunica muscularis

serosa

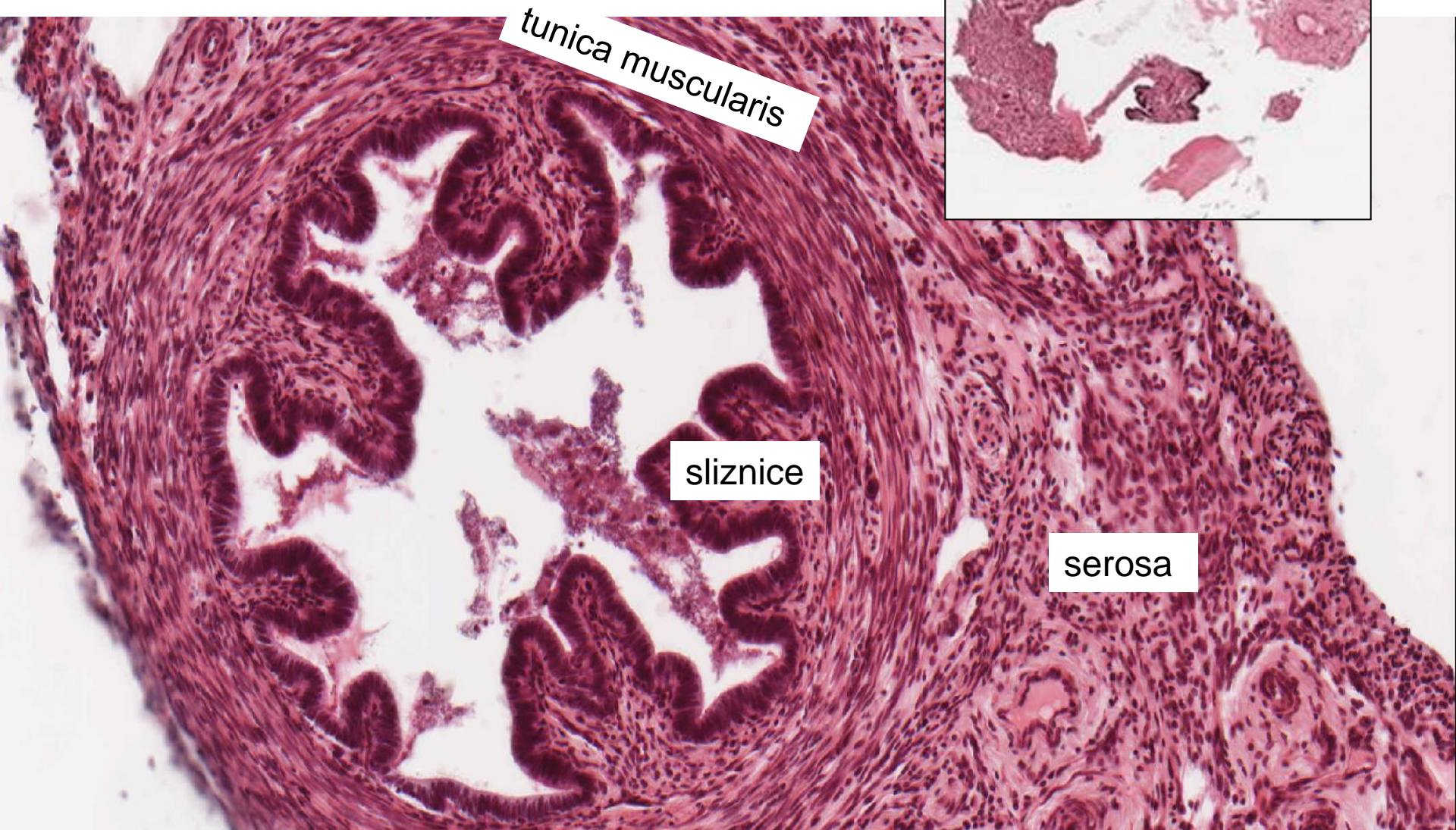
mezotel

20 μm

Tuba uterina - ampulla



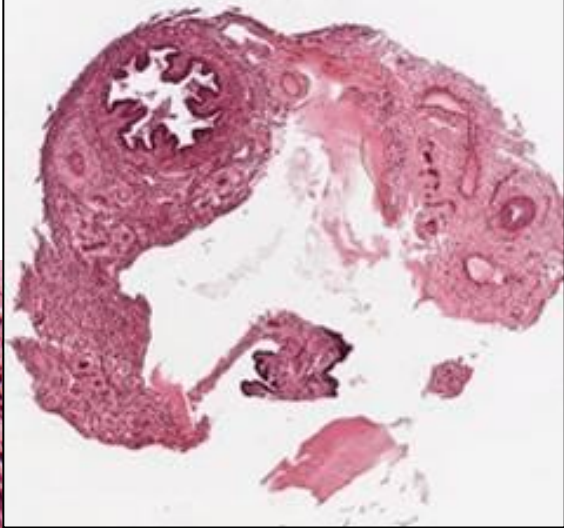
Tuba uterina - isthmus

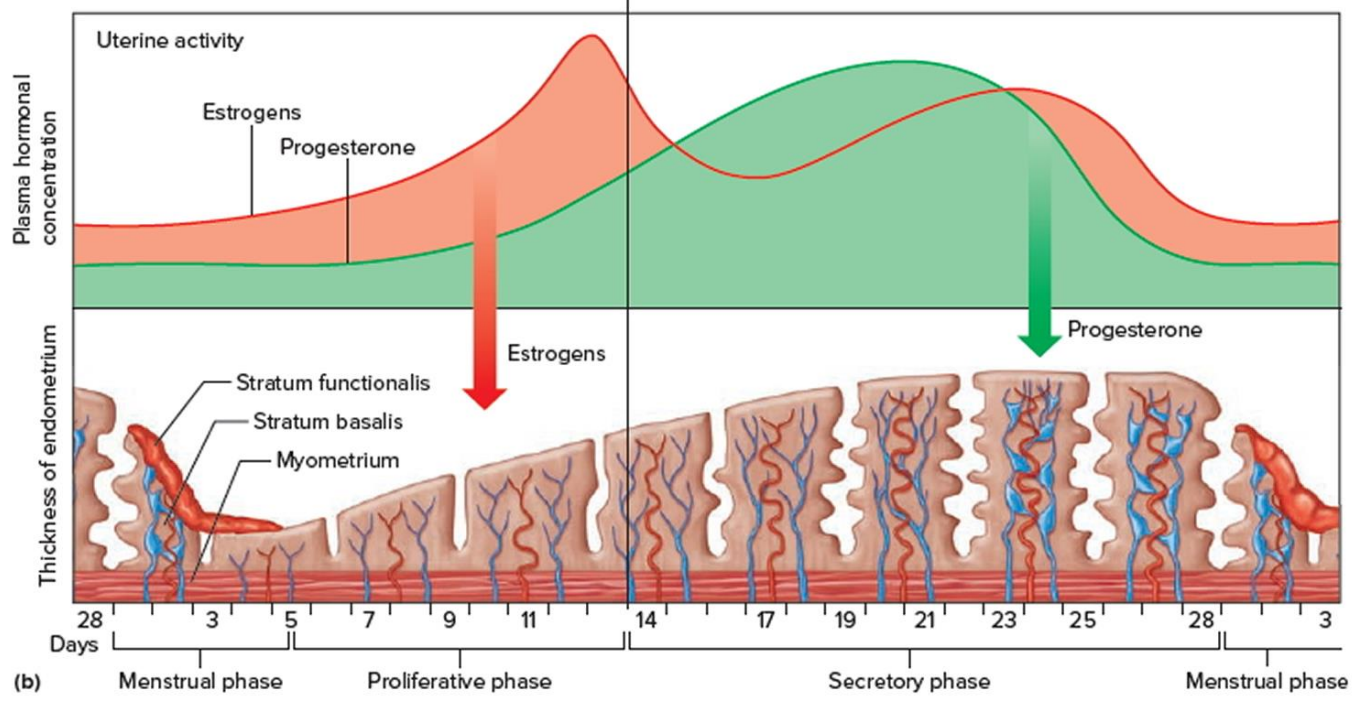
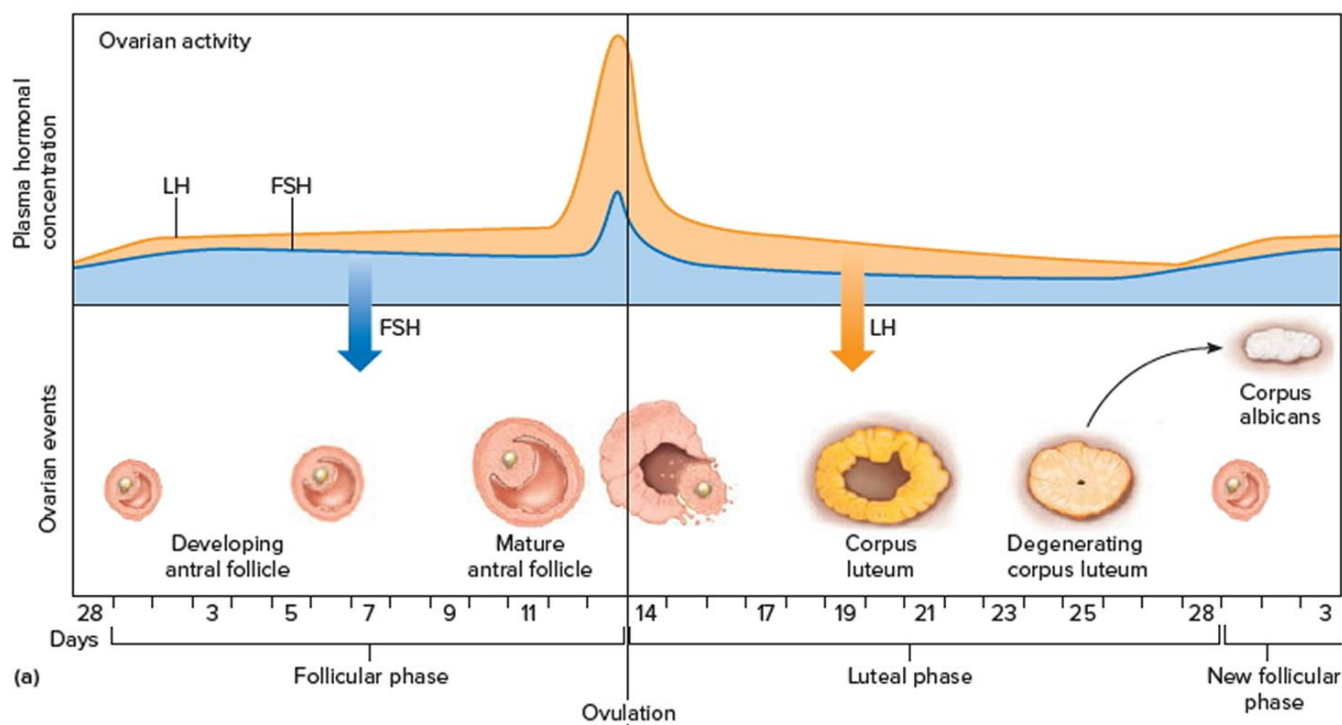


tunica muscularis

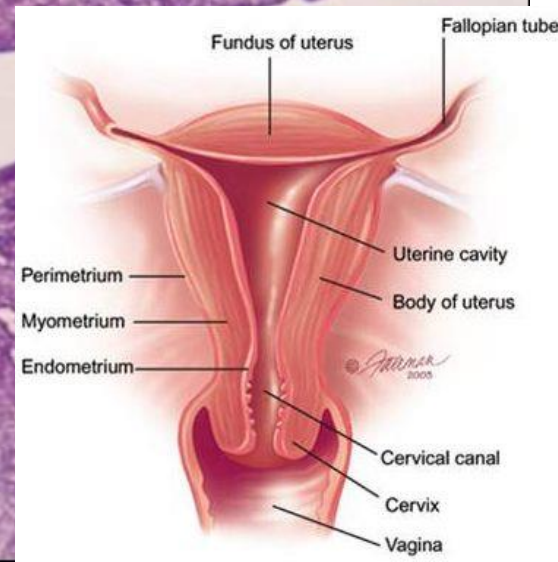
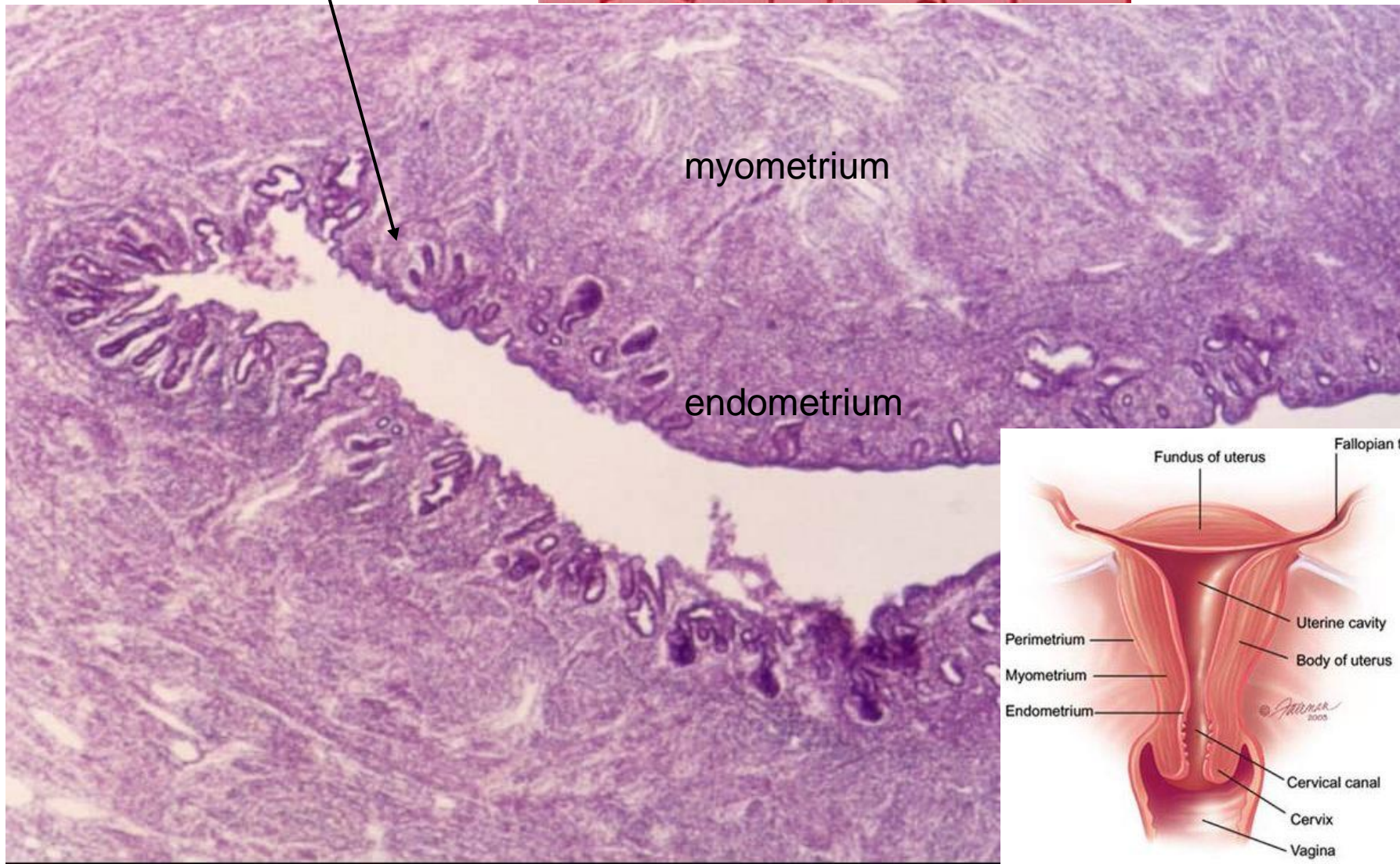
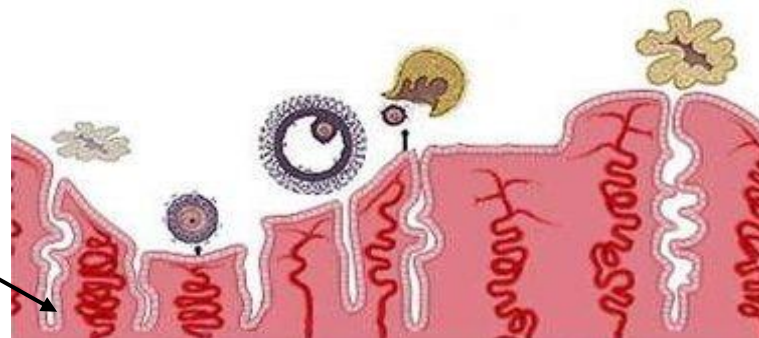
sliznice

serosa



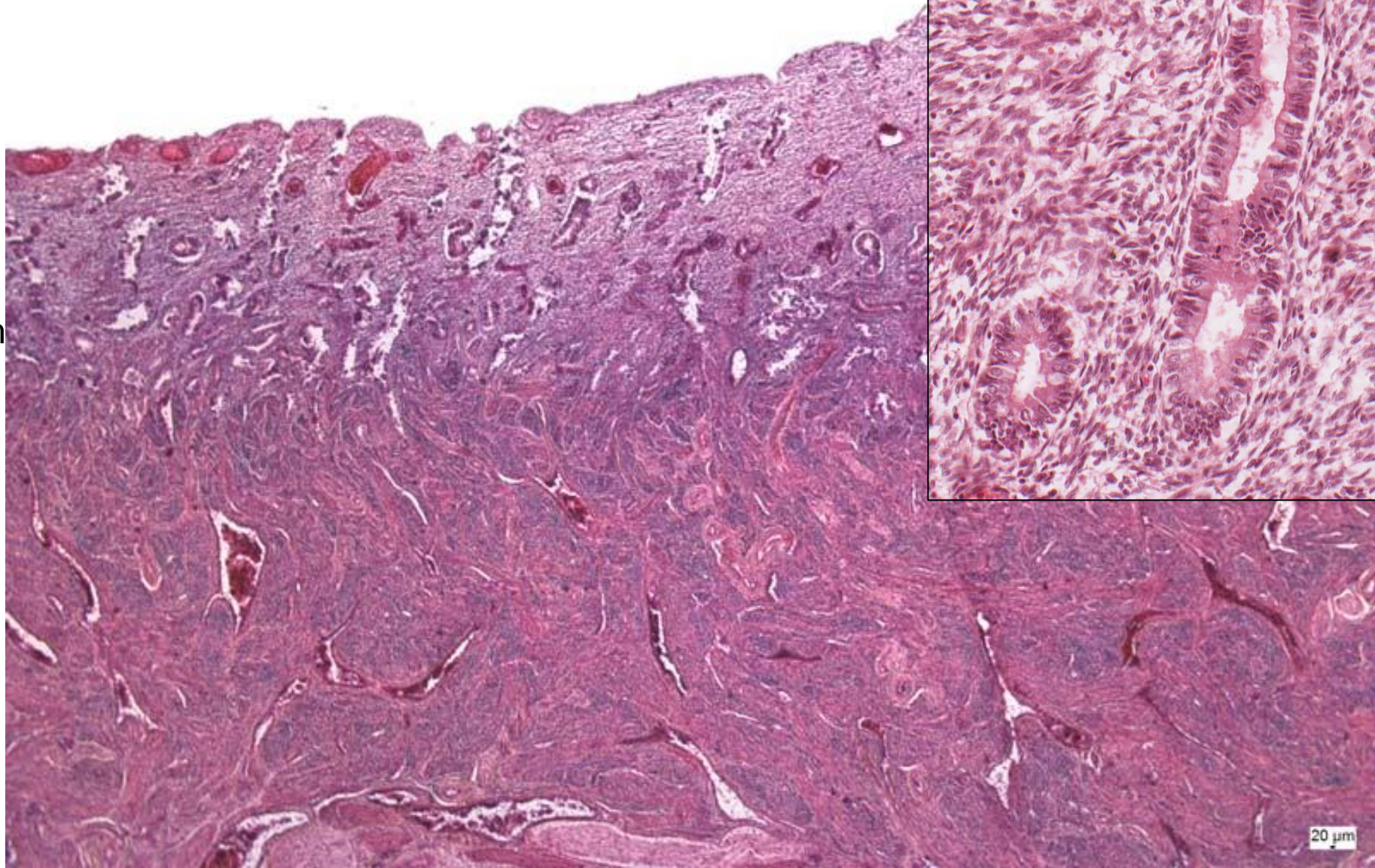


Ovariální a menstruační cyklus



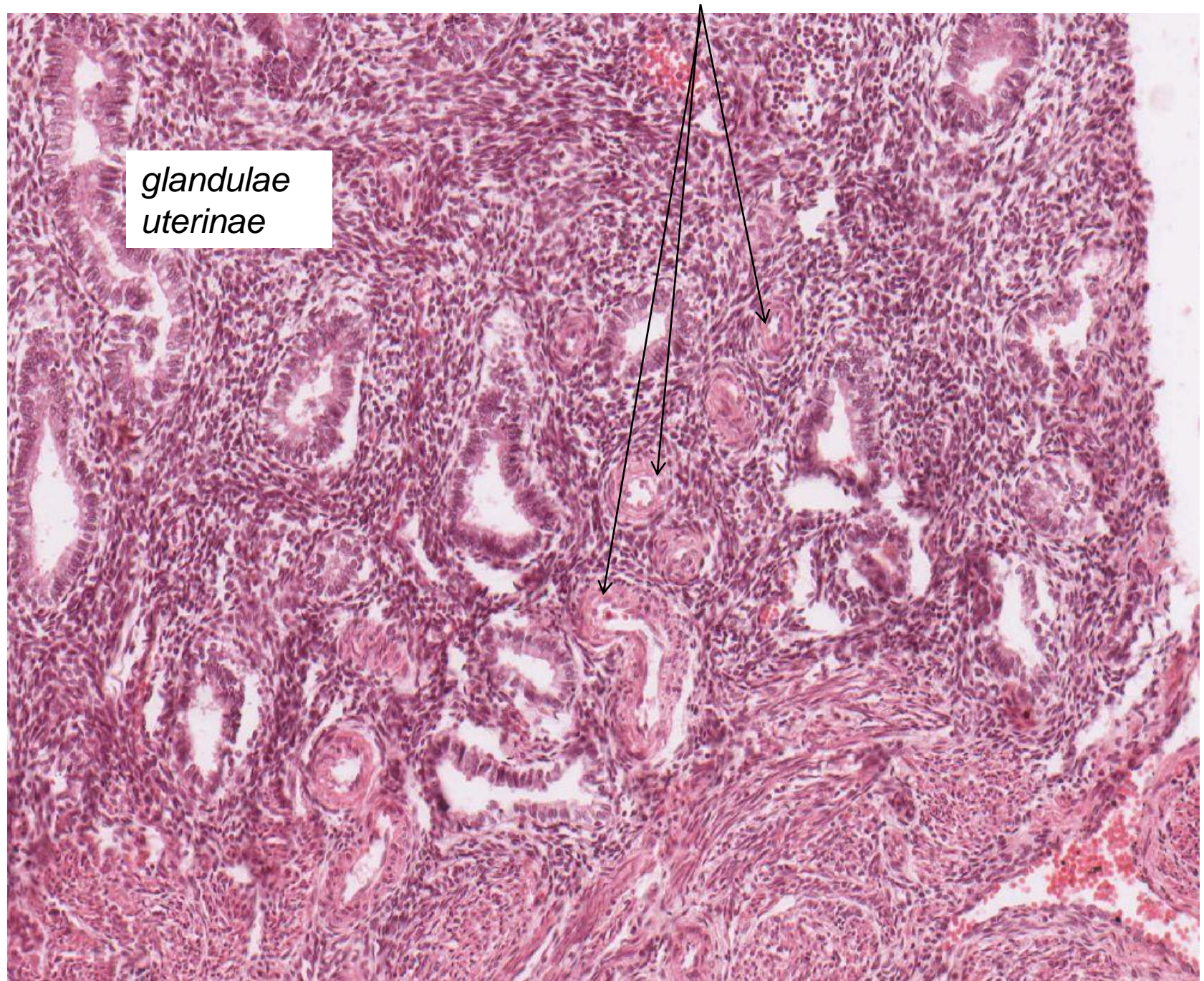
Endometrium – proliferační fáze
– *glandulae uterinae*

3-4
mm



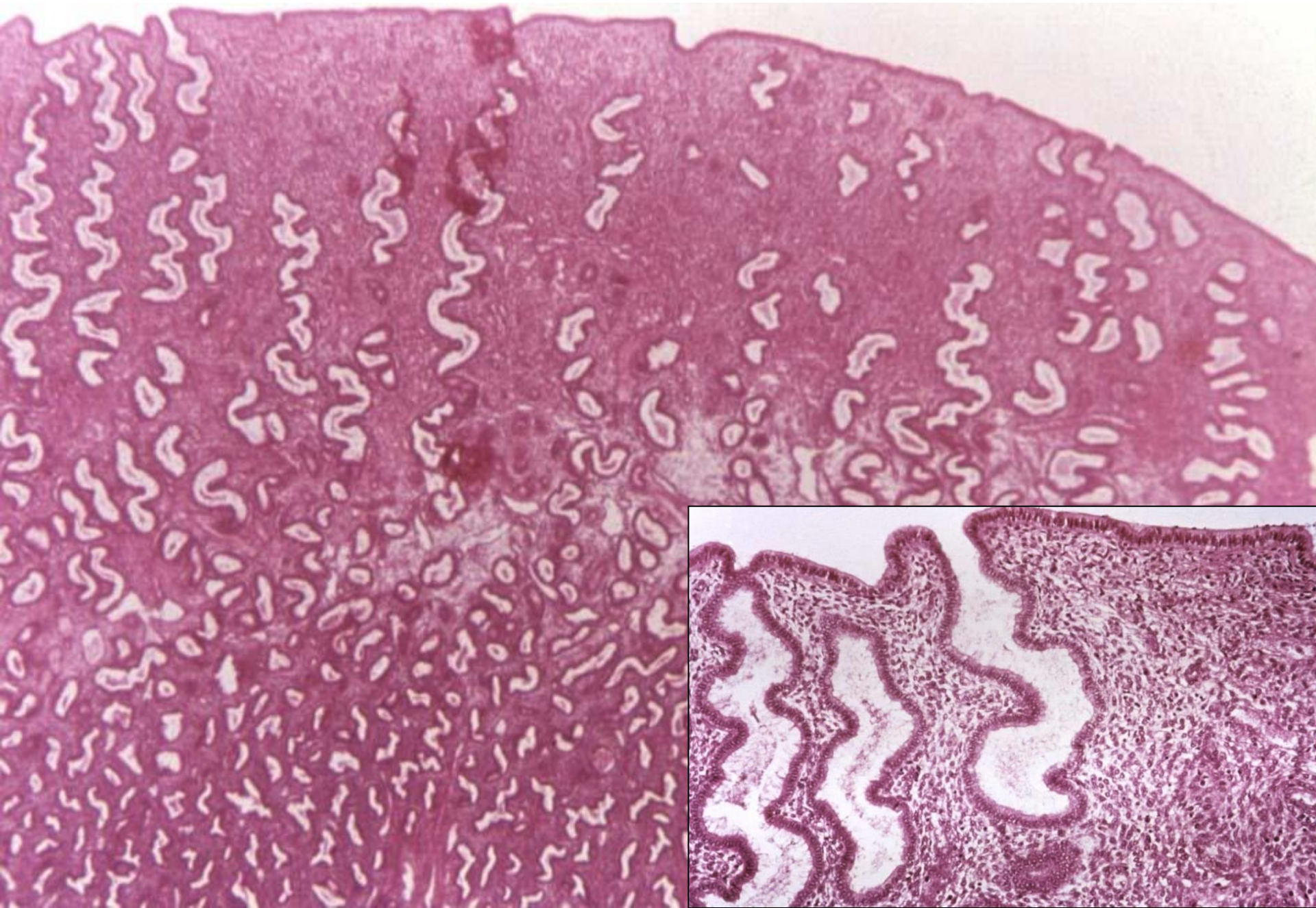
20 μm

Endometrium – proliferační fáze – arteriae helicinae, buněčné vazivo



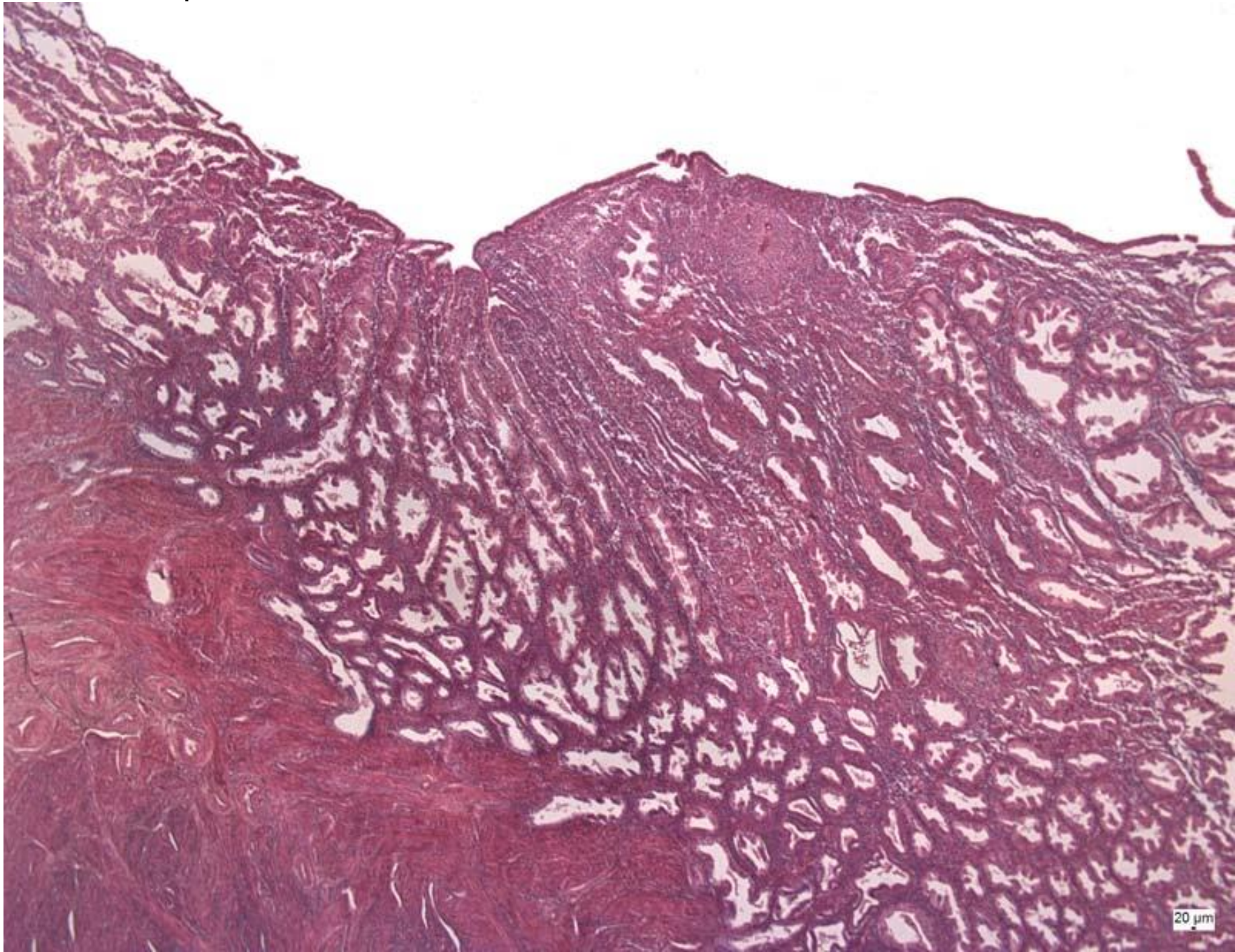
*glandulae
uterinae*

Endometrium – začátek sekreční fáze



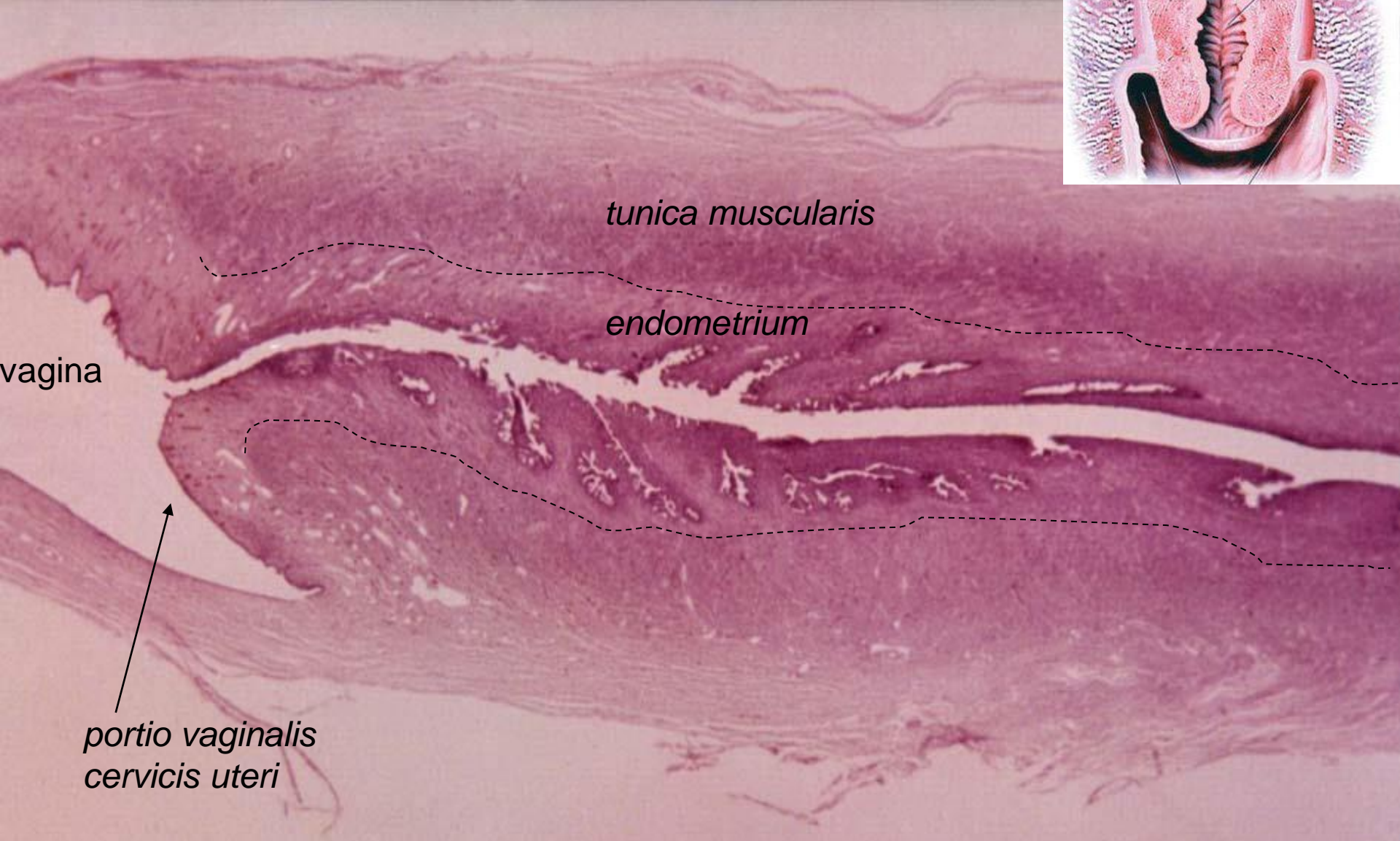
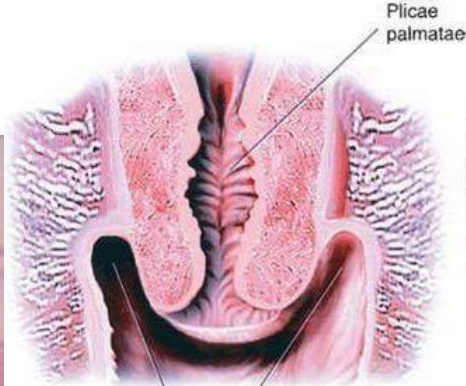
Endometrium – pokročilá sekreční fáze

5-7
mm



20 μ m

Cervix uteri



glandulae cervicales – cervikální hlen

Portio vaginalis cervicis uteri - přechod epitelů

jednovrst.cyl.epi (endocervix)

vrst.dlažd.epi (exocervix, ektocervix)





ŽENSKÝ POHLAVNÍ SYSTÉM I

Preparáty:

42. *Ovarium* - člověk
43. *Ovarium* – kočka
44. *Ovarium - corpus luteum*
45. *Tuba uterina – ampulla*
46. *Tuba uterina – isthmus*
47. *Uterus* – proliferační fáze
48. *Uterus* – sekreční fáze

Atlas EM:

Ovariální folikul (72)

Ovariální a menstruační cyklus (73)

Od pohlavních buněk k ranému embryu (74)

Vejcovod - epitel (20, 21)