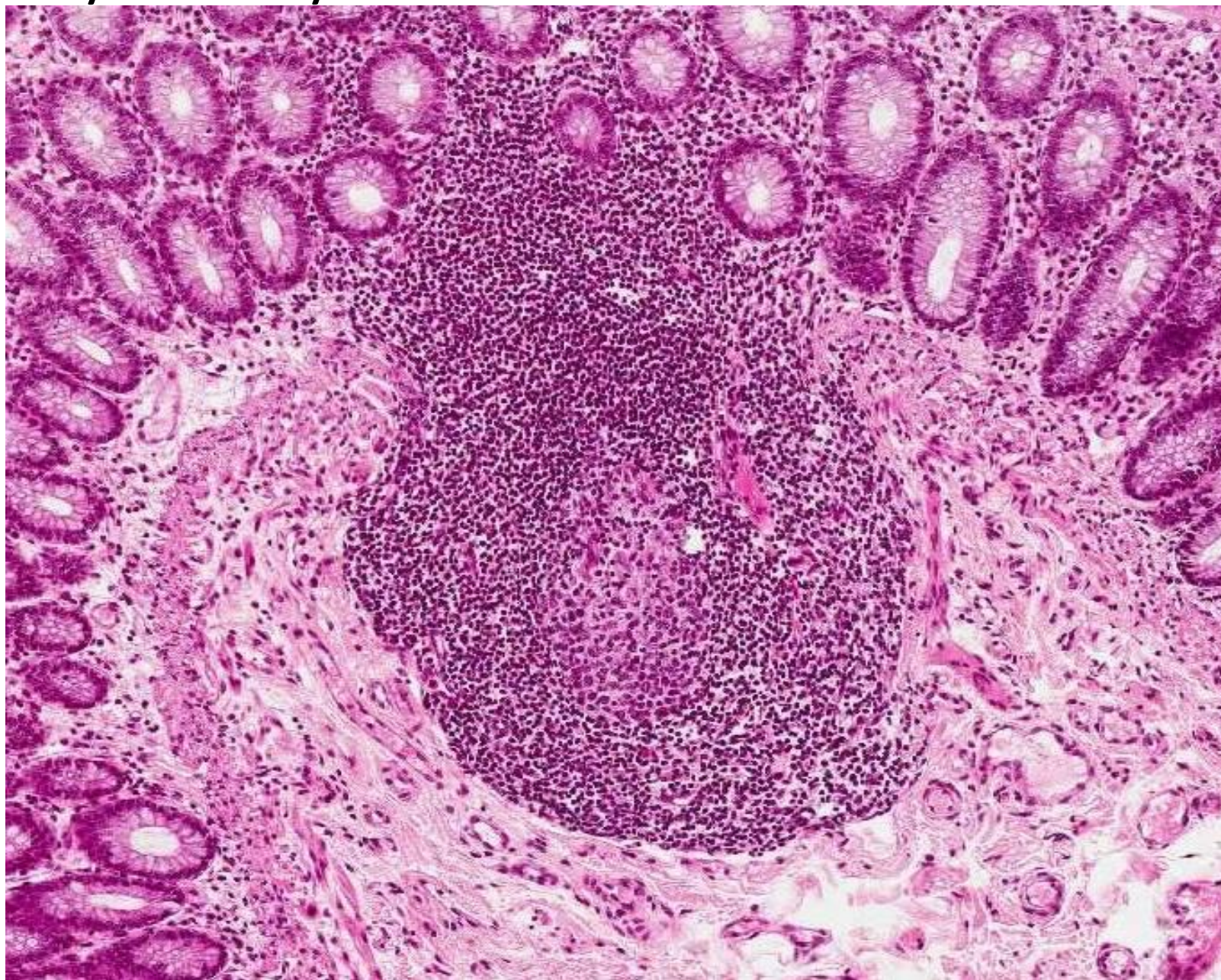




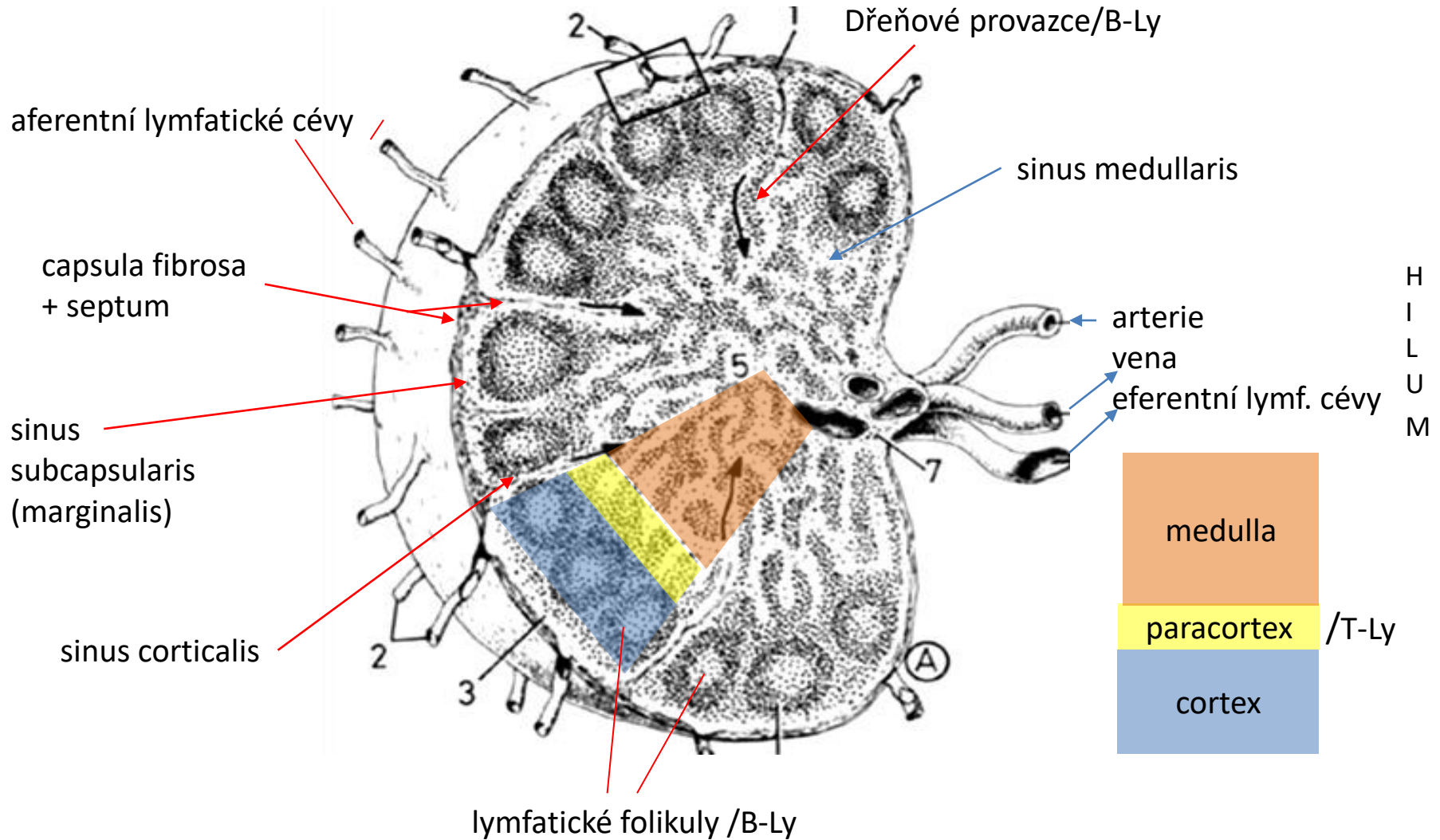
LYMFATICKÝ SYSTÉM

- Lymfatická tkáň, lymfatický uzlík
- Lymfatické orgány:
 - Centrální → thymus, (kostní dřeň)
 - Periferní →
 - lymfatická uzlina
 - slezina
 - tonsily
 - lymfatická tkáň ve sliznicích
- Lymfatické cévy

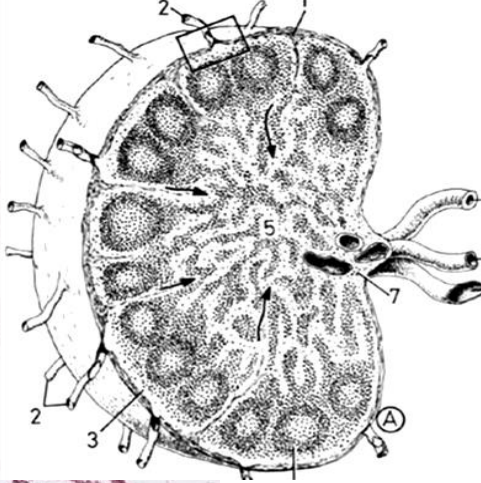
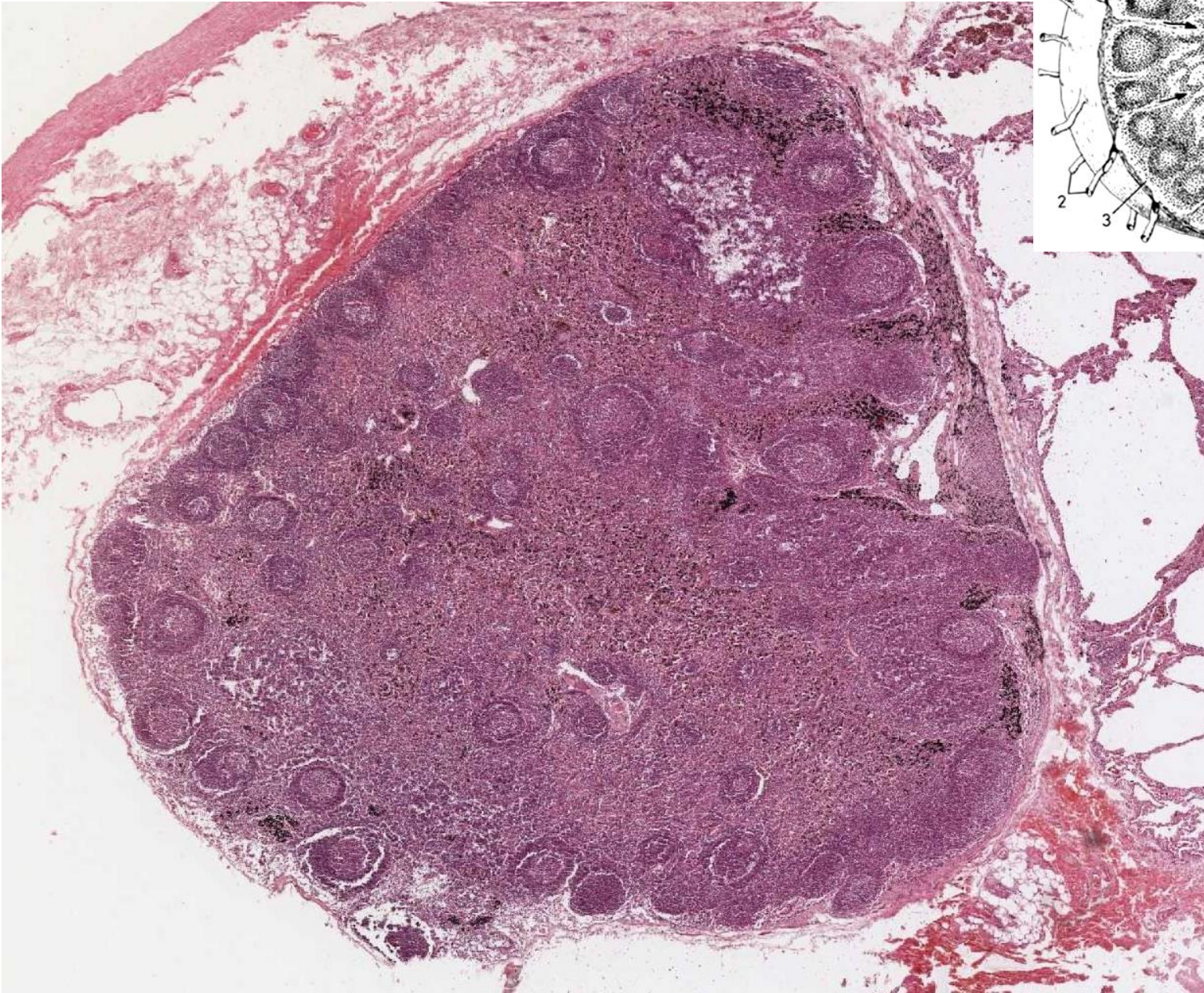
Lymfatický uzlík ve stěně střeva



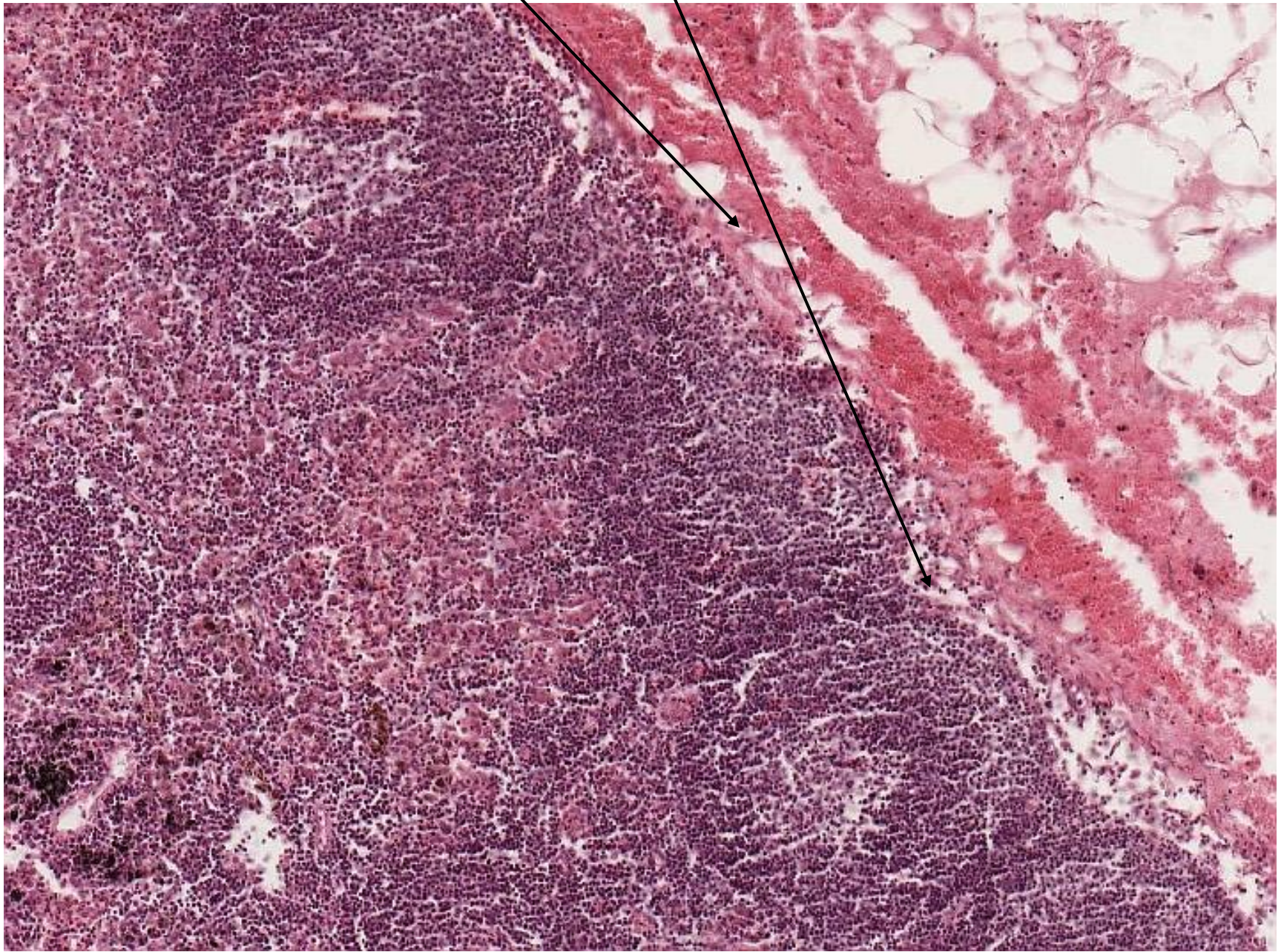
Lymphonodus



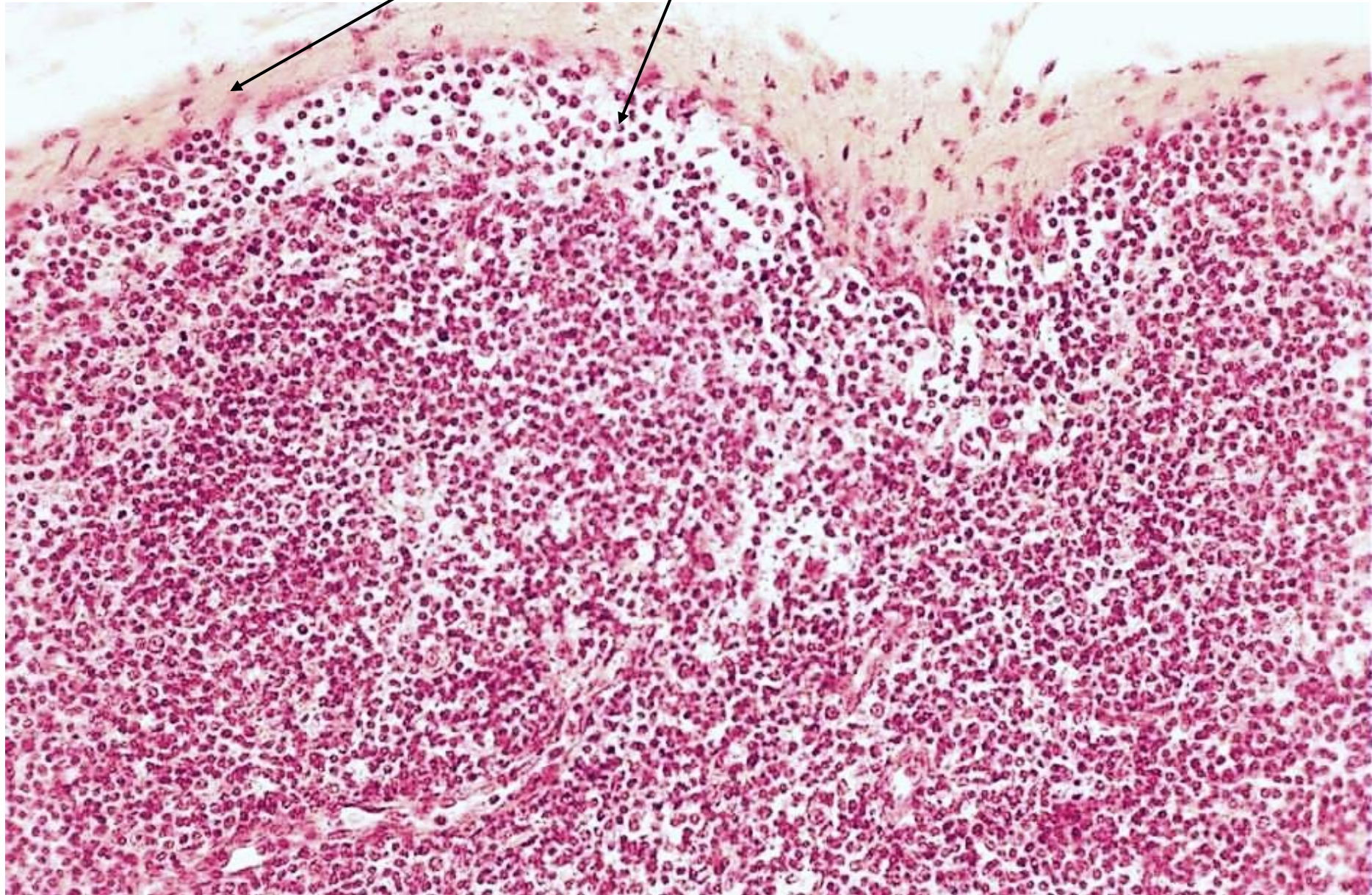
Lymphonodus



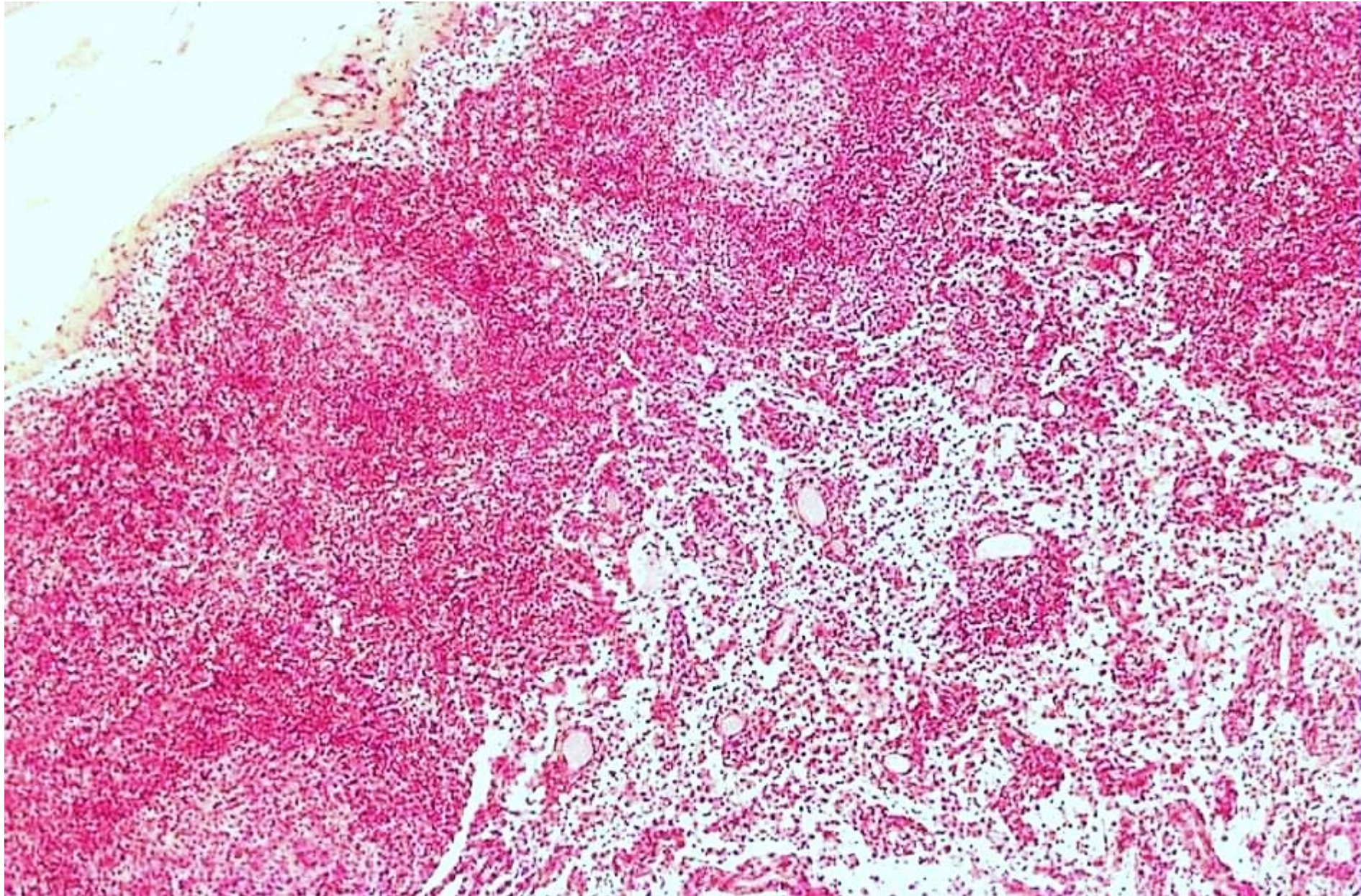
Lymphonodus – pouzdro, subkapsulární sinus, kůra



Lymphonodus – pouzdro, subkapsulární sinus, kůra

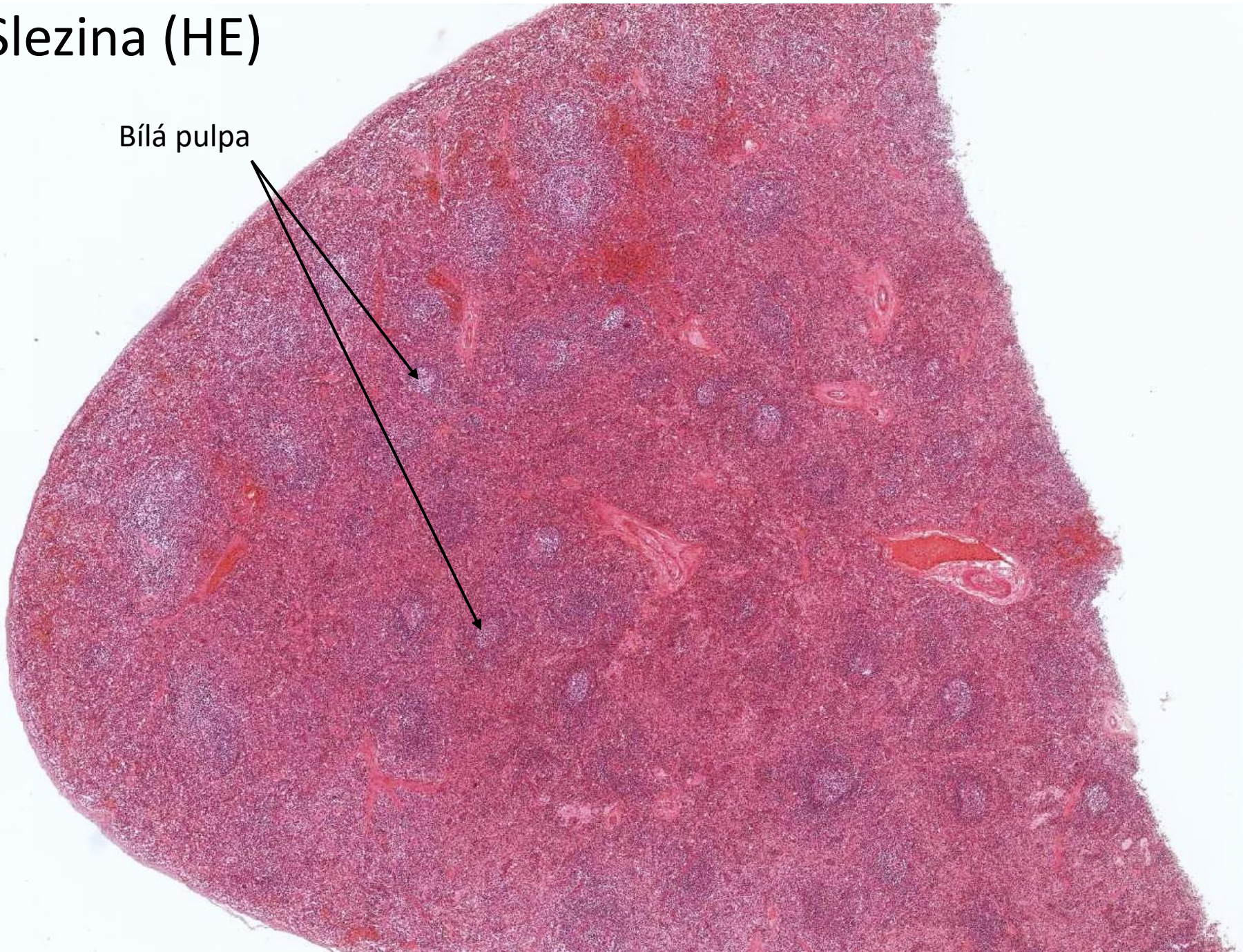


Lymphonodus – kůra, dřeň

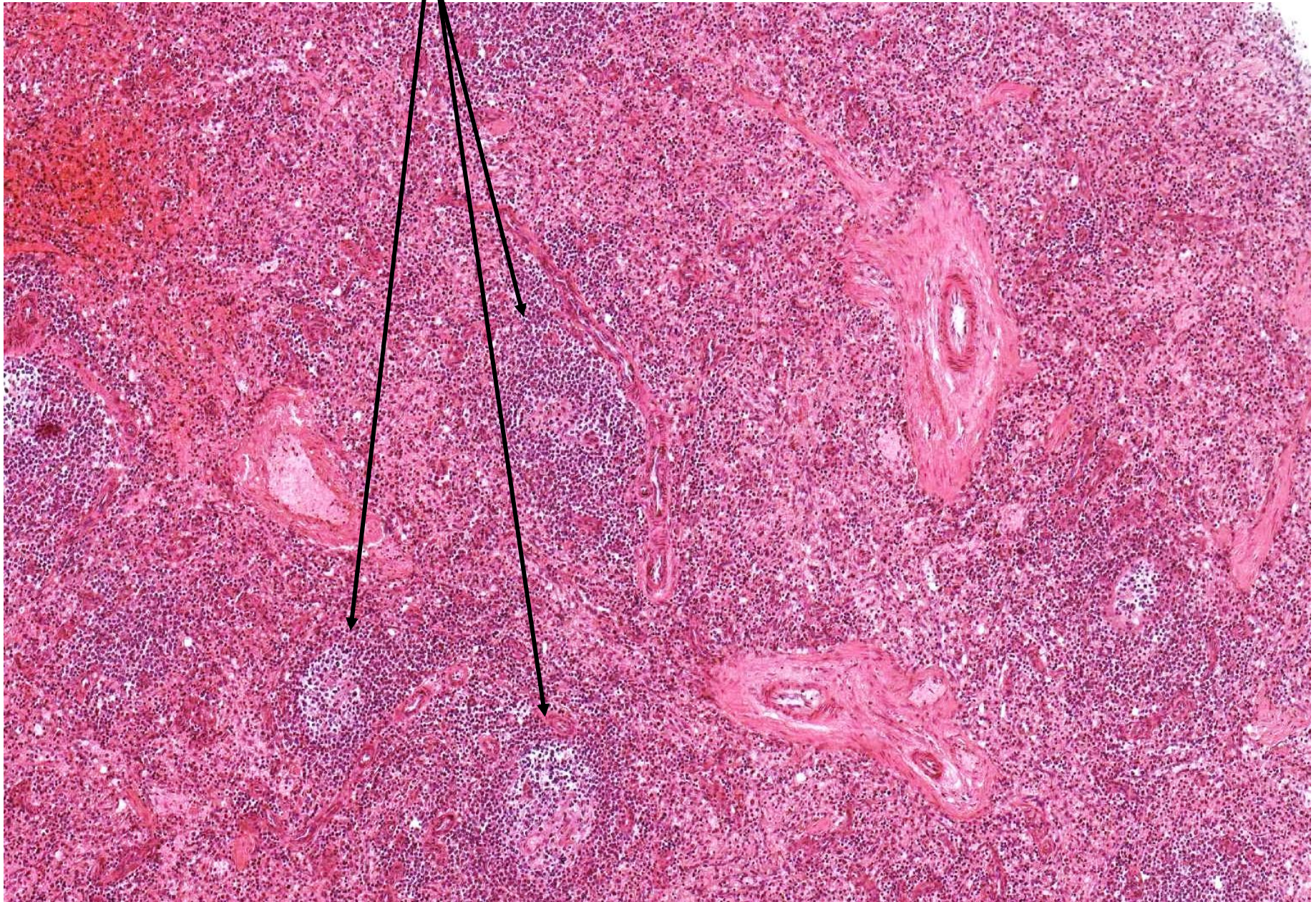


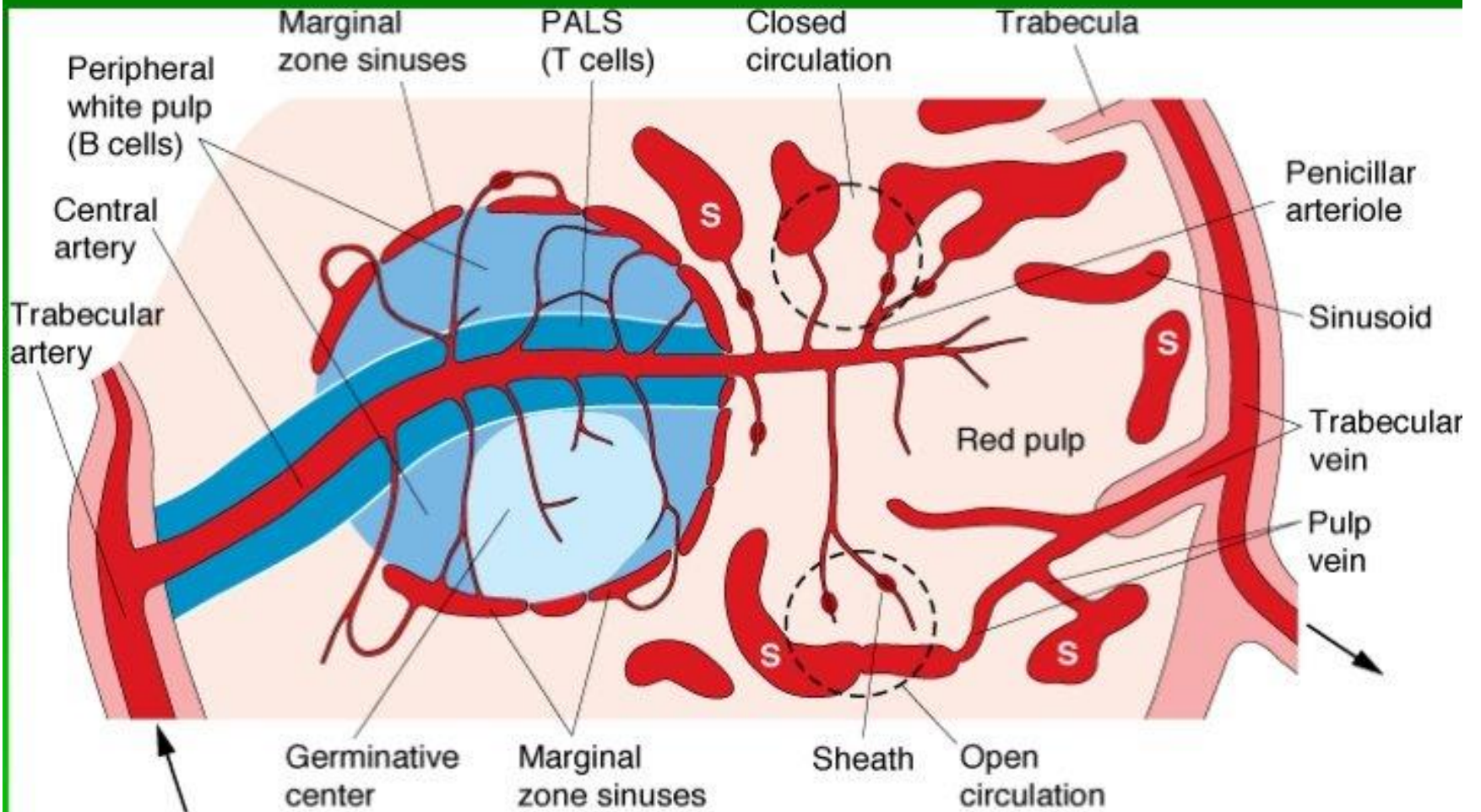
Slezina (HE)

Bílá pulpa



Slezina (HE) – bílá a červená pulpa, trabekuly

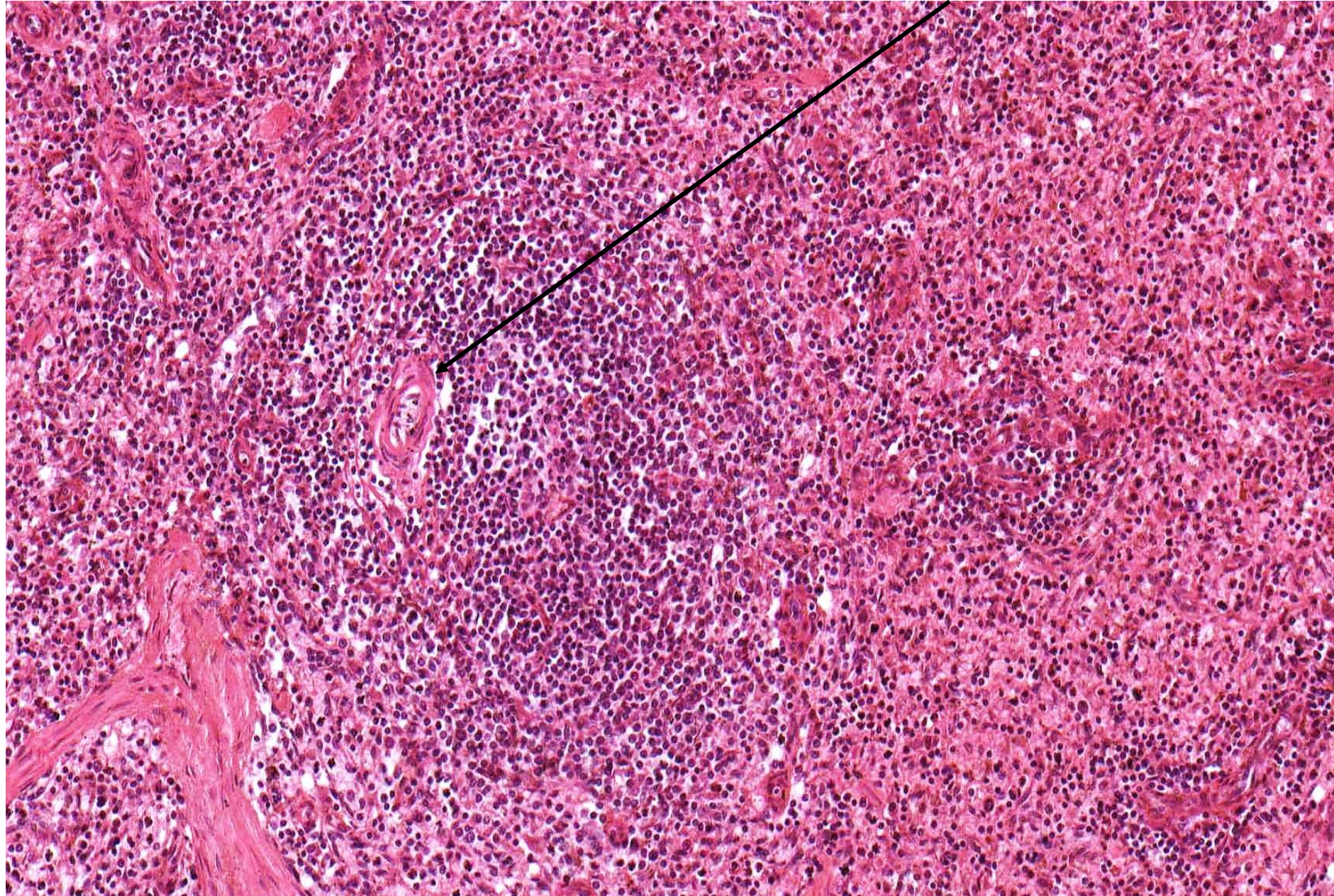




Source: Mescher AL: *Junqueira's Basic Histology: Text and Atlas, 12th Edition*: <http://www.accessmedicine.com>

Copyright © The McGraw-Hill Companies, Inc. All rights reserved.

Slezina (HE) – bílá a červená pulpa, a. centralis



Slezina - impregnace



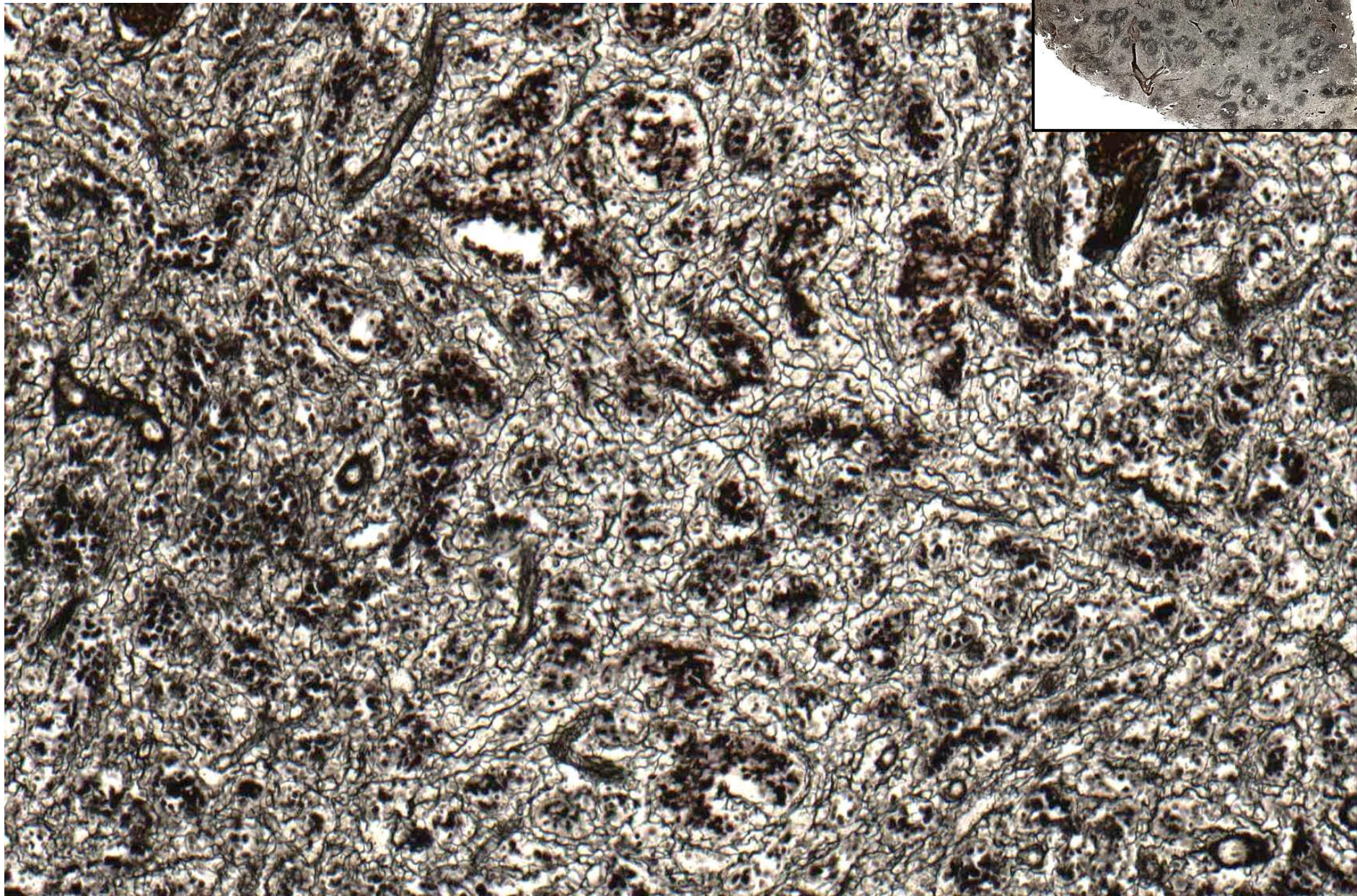
červená pulpa

bílá pulpa

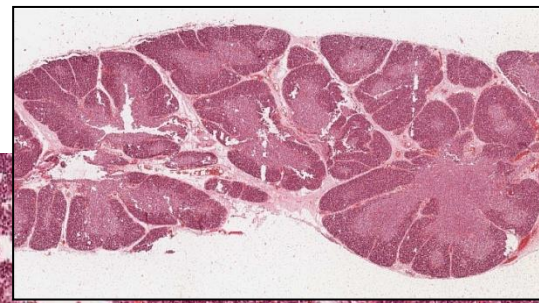
bílá pulpa



Slezina, červená pulpa - impregnace

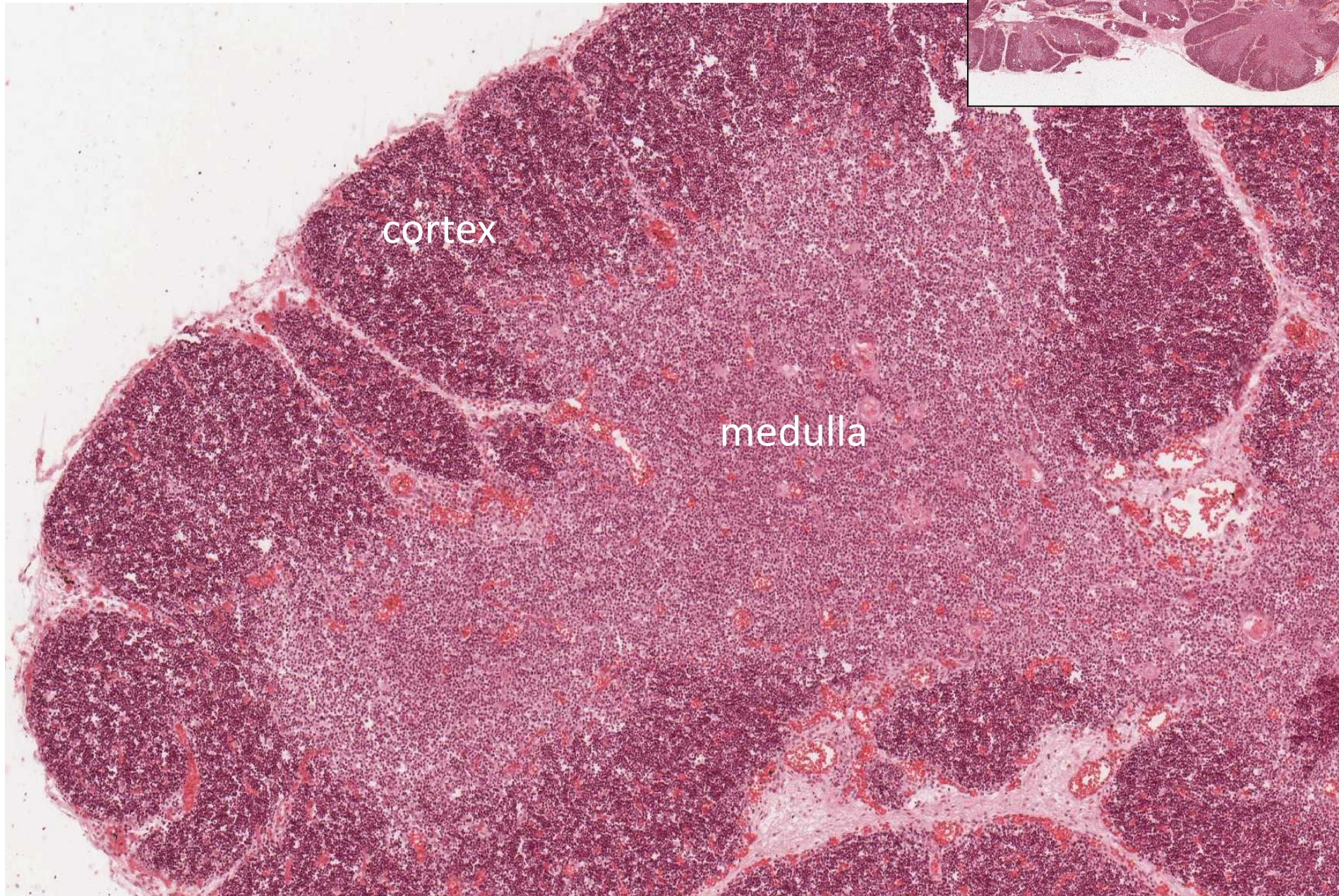


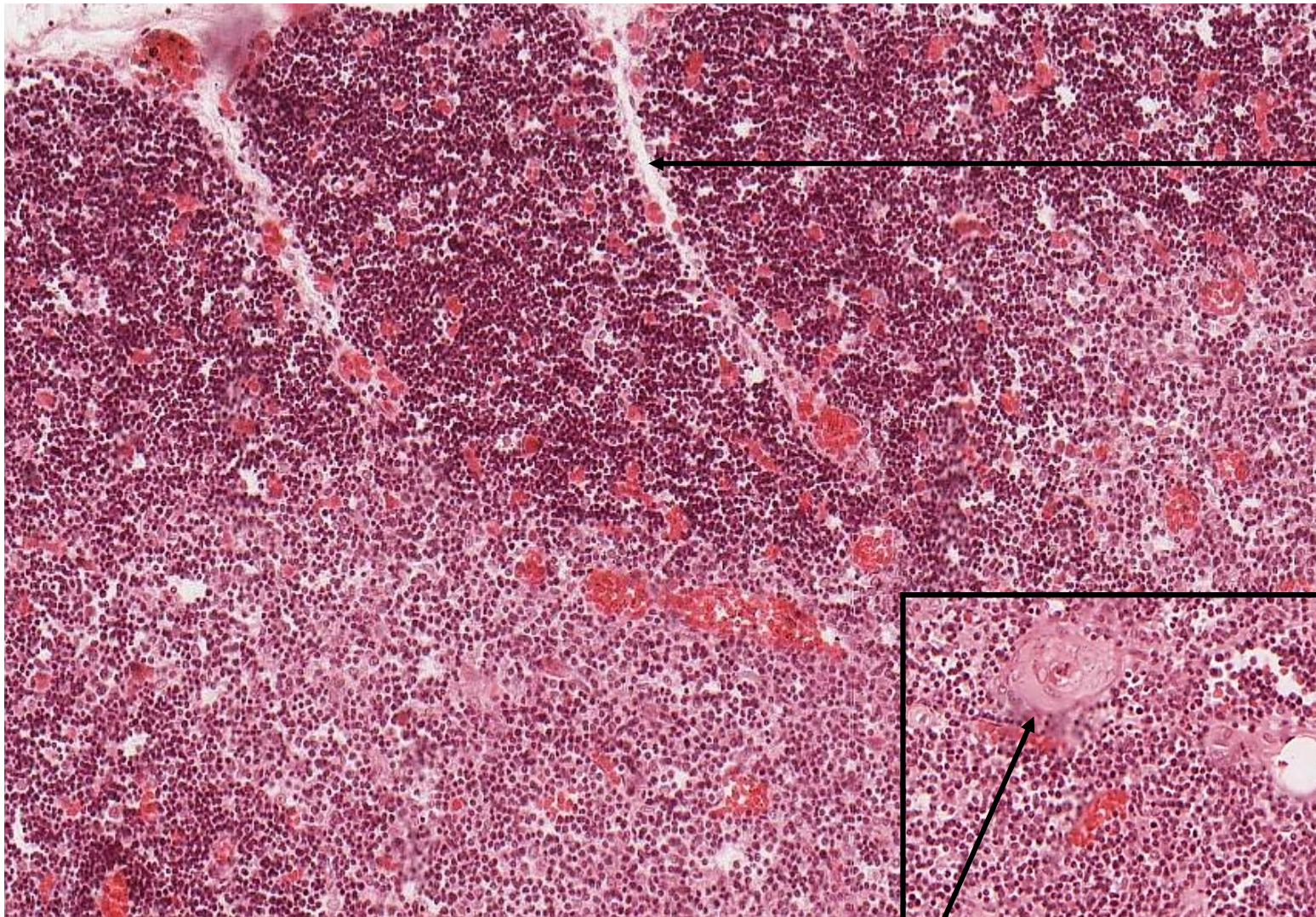
Thymus mladý (HE)



cortex

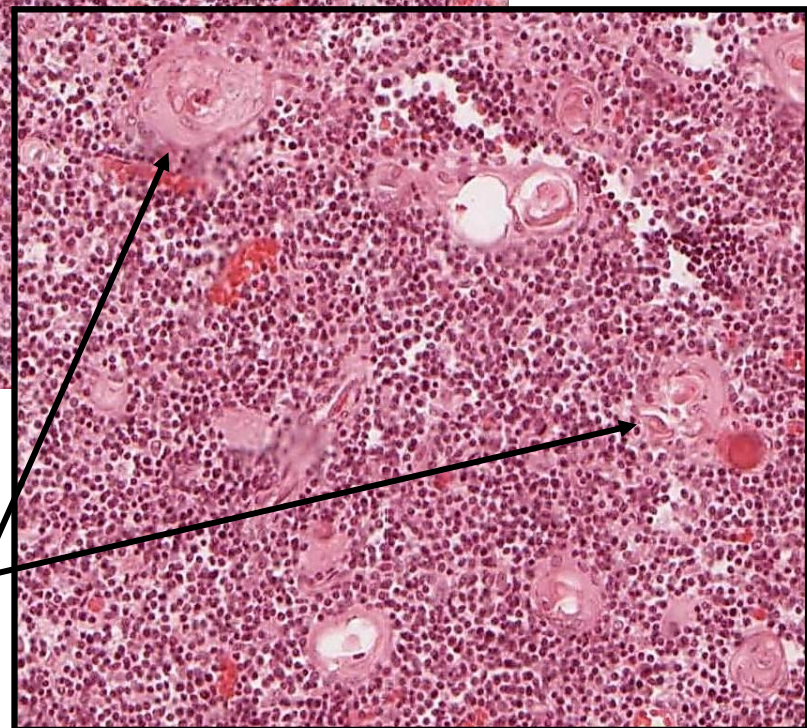
medulla



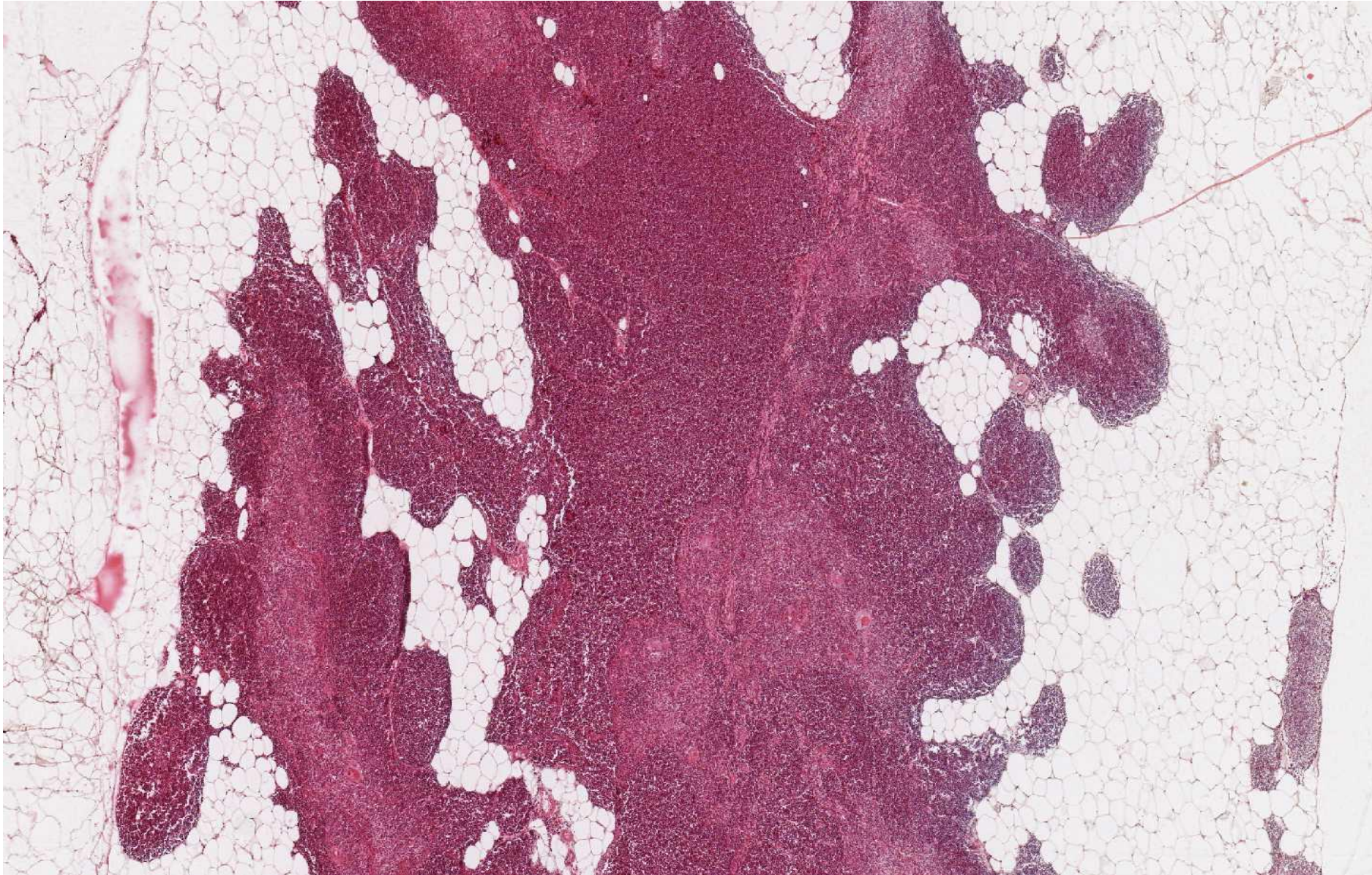


septum

Thymus mladý – kůra a dřeň
Hassalova tělíška

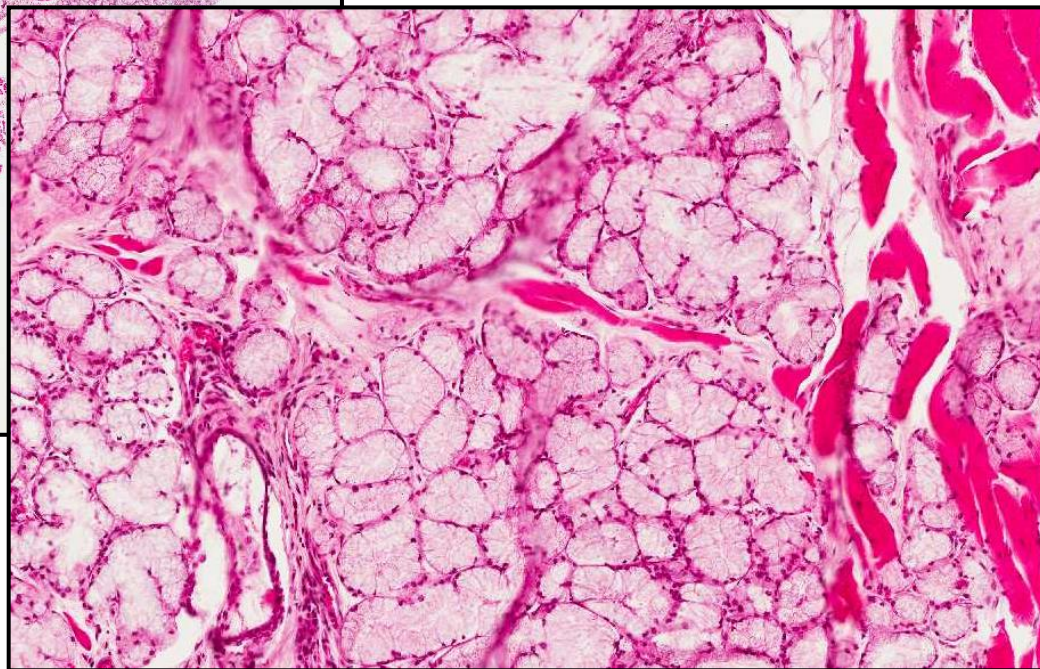
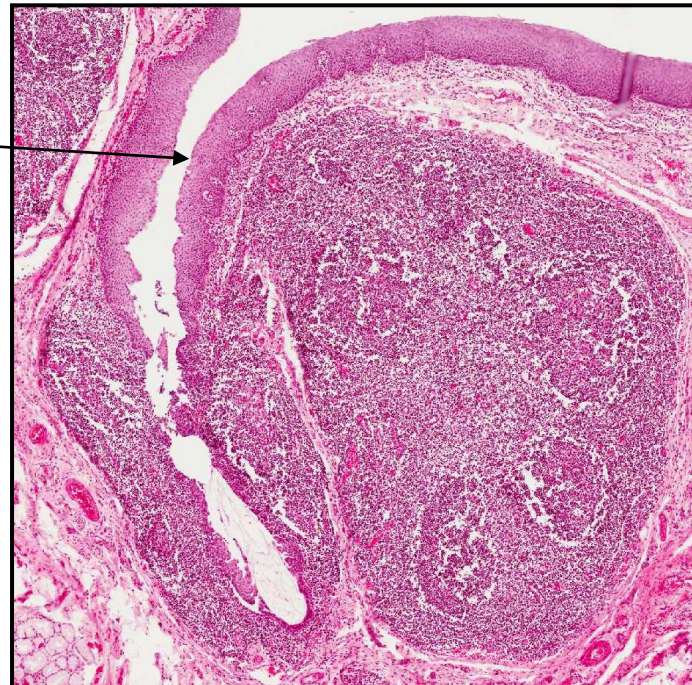
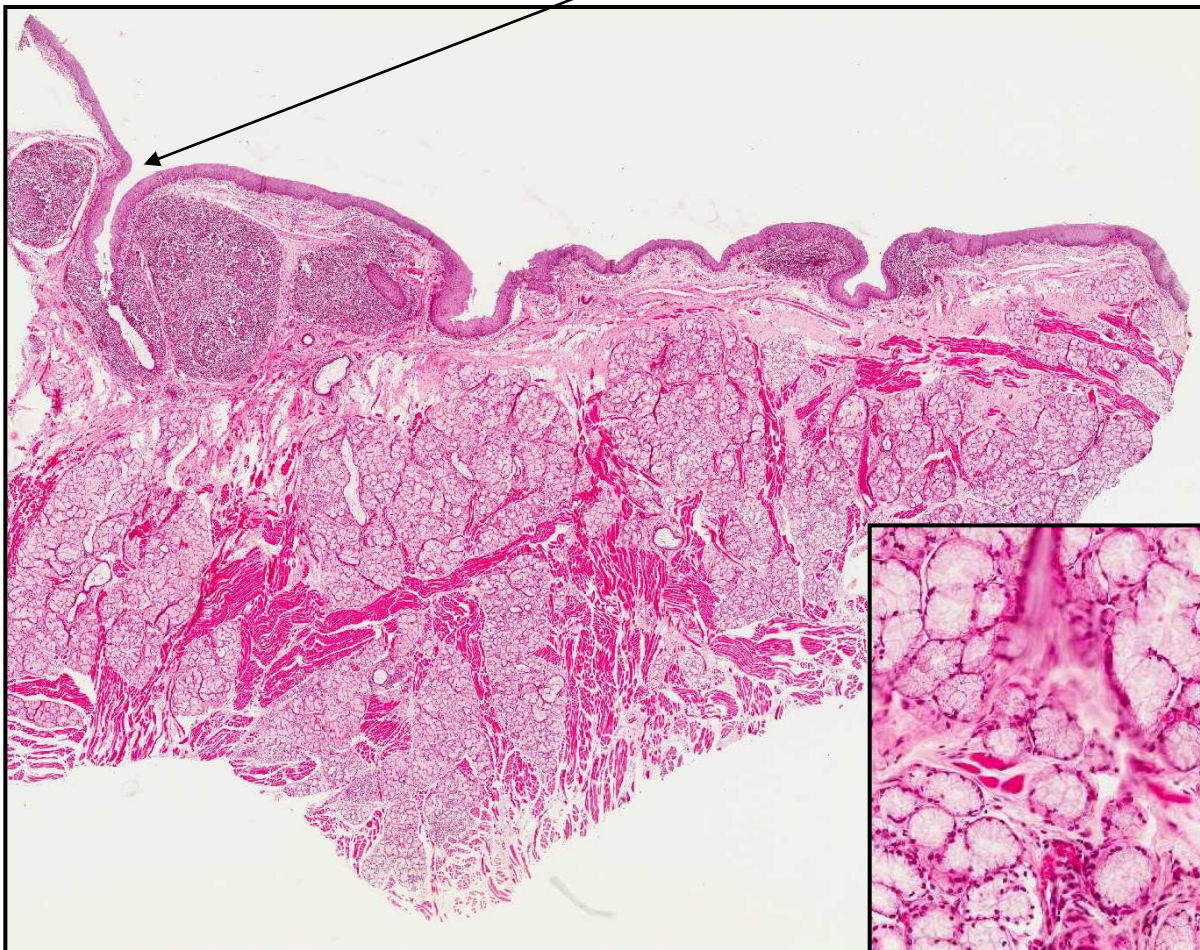


Thymus v involuci (HE)



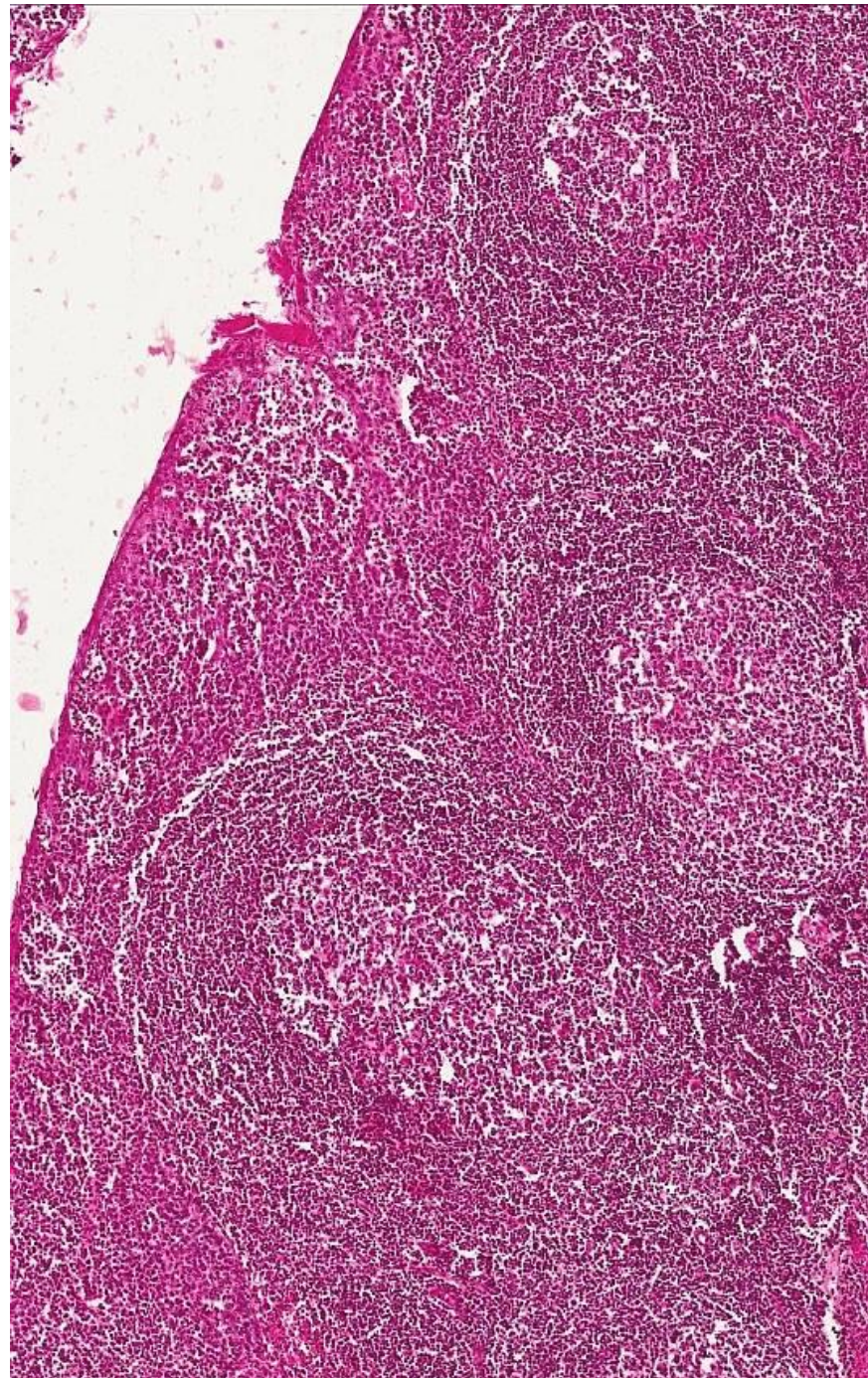
Tonsilla lingualis

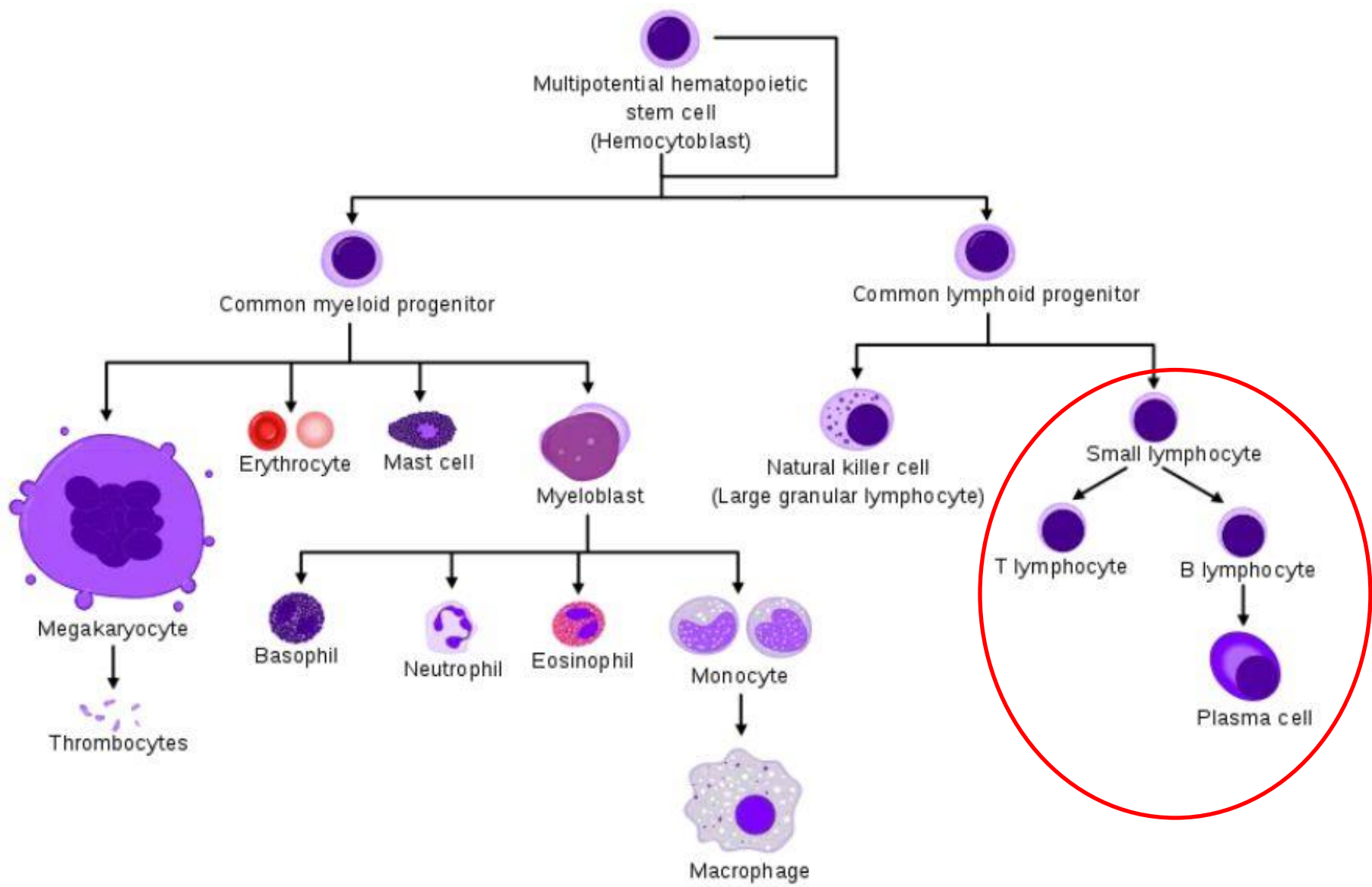
krypty



Tonsilla palatina

krypty







LYMFATICKÝ SYSTÉM

Preparáty

- 66. Lymphonodus (HE)
- 67. Lien (HE)
- 68. Lien (impregnace)
- 57. Thymus mladý (HE)
- 58. Thymus v involuci (HE)
 - 4. Tonsilla lingualis (HE)
 - 6. Tonsilla palatina (HE)

Atlas

- 88. Faryngový aparát