



# LYMPHATIC SYSTEM

- Lymphoid tissue, lymphoid nodule (follicle)

- Lymphoid organs:

Central → thymus, (red bone marrow)

Peripheral → lymph node

spleen

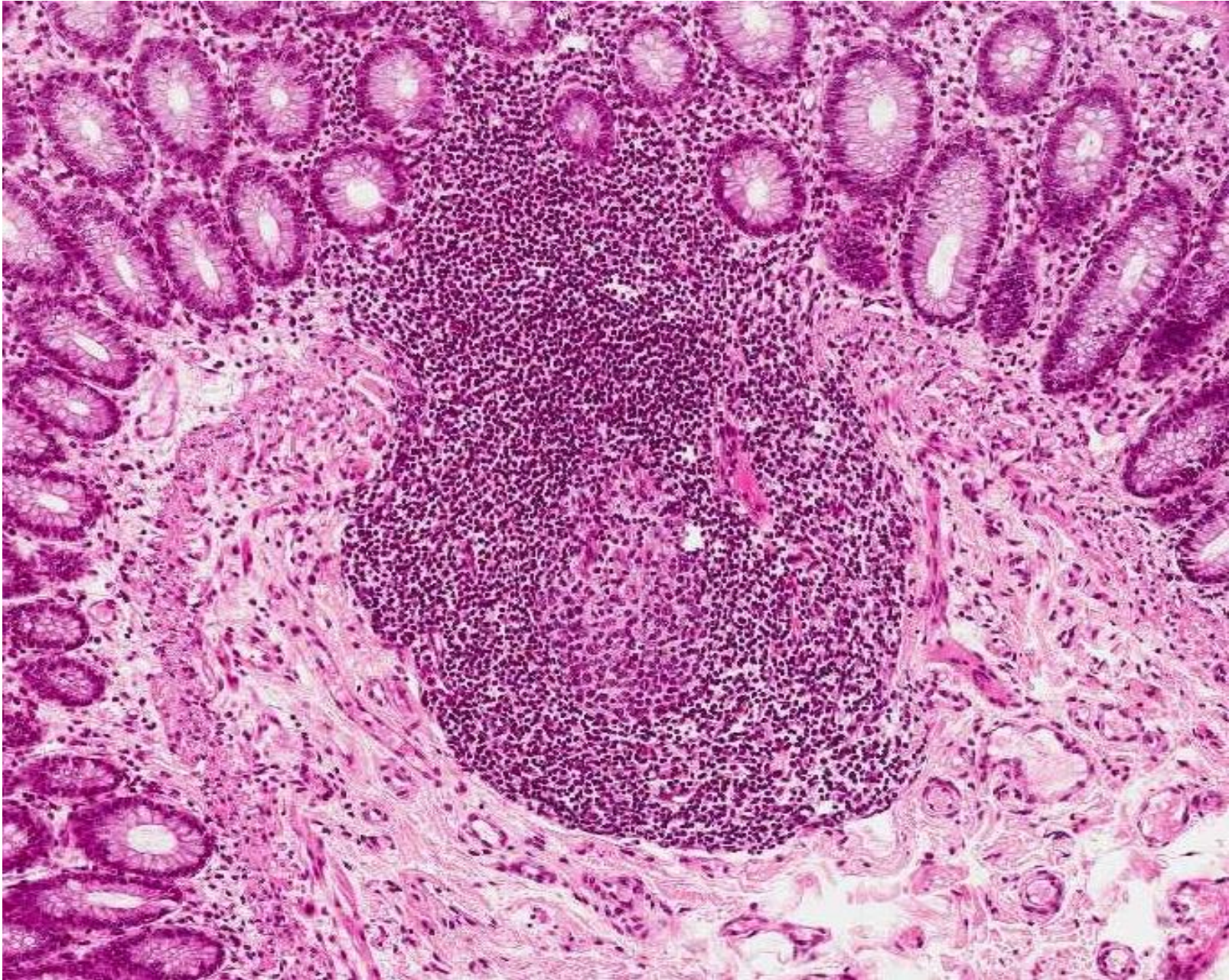
tonsils

mucosa-associated lymphoid  
tissue /MALT)

- Lymphatic vessels

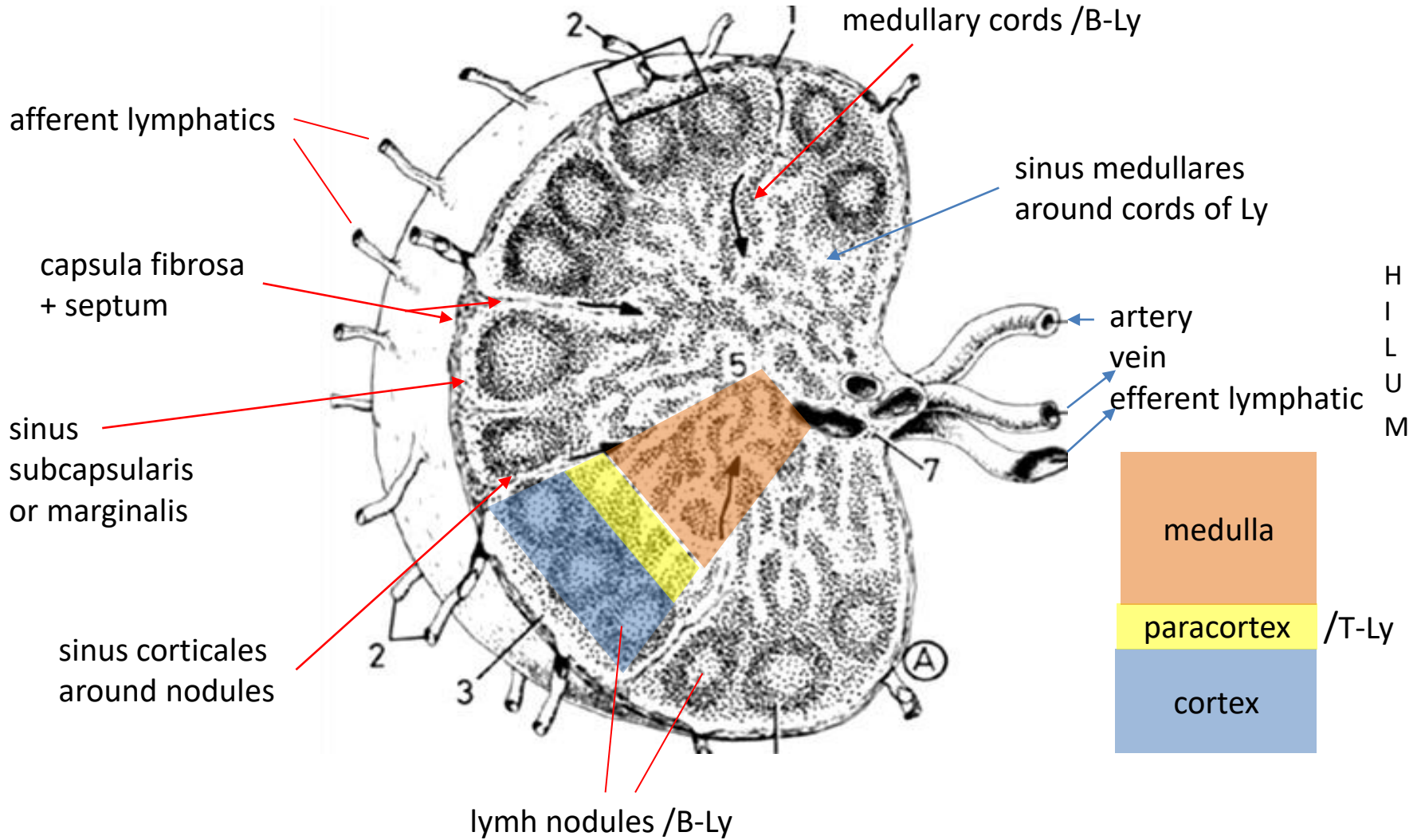


# lymphoid nodule (follicle) in the intestinal mucosa



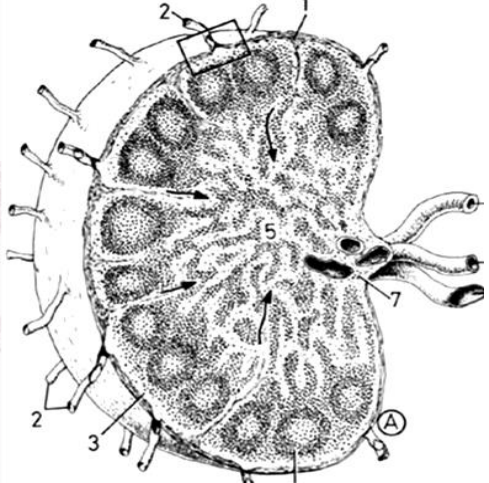
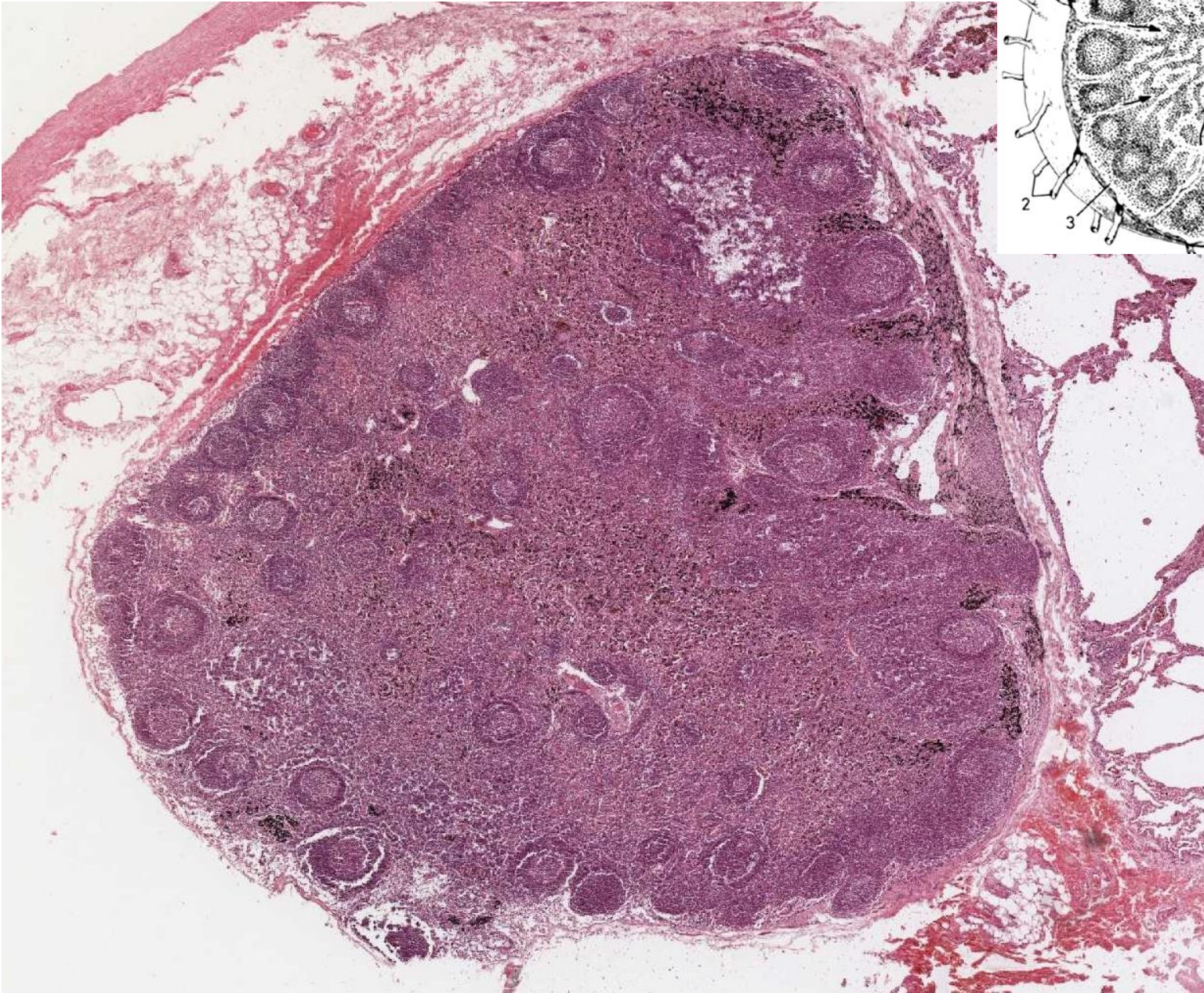


# LYMPH NODE



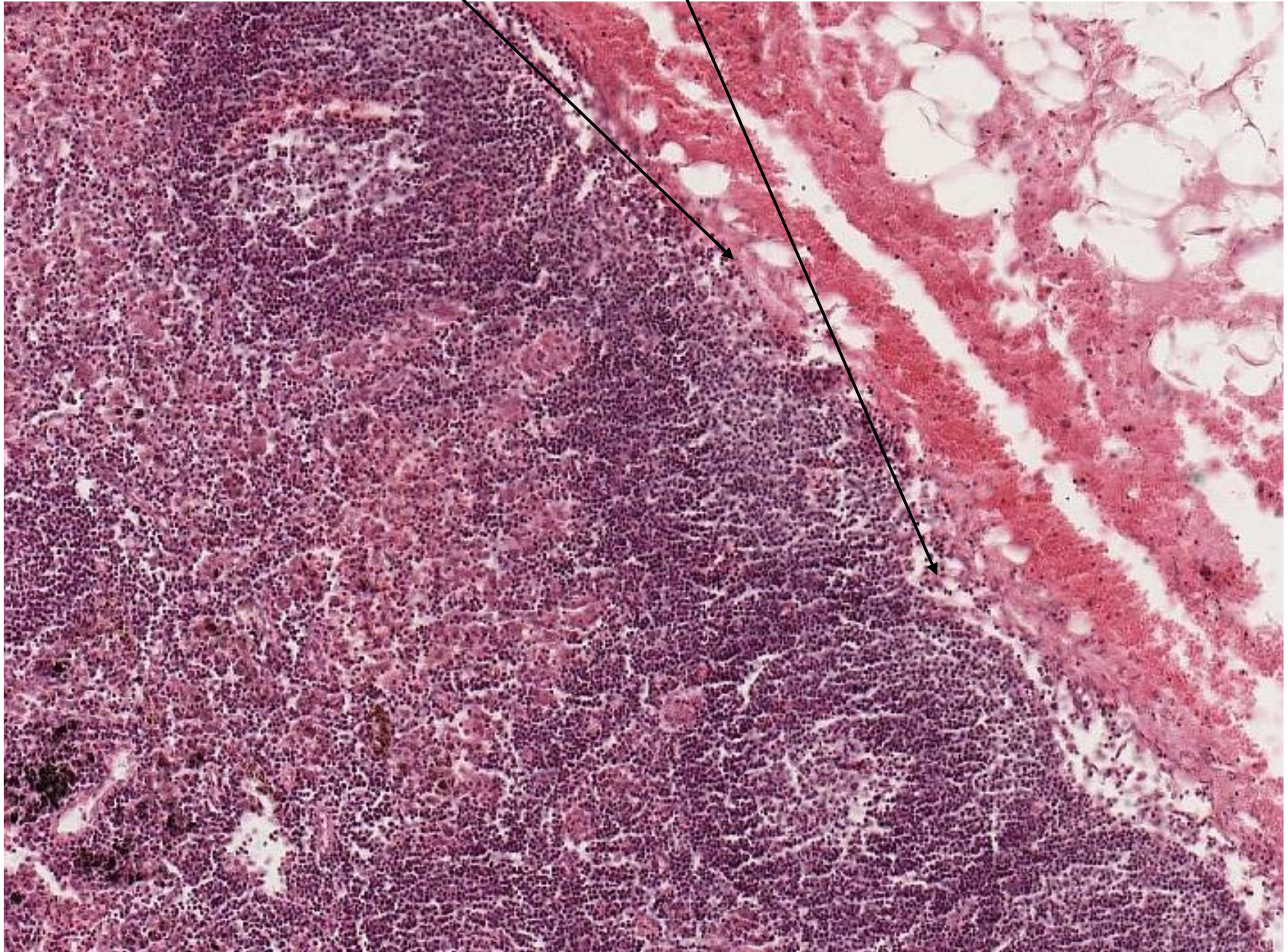


# Lymph node



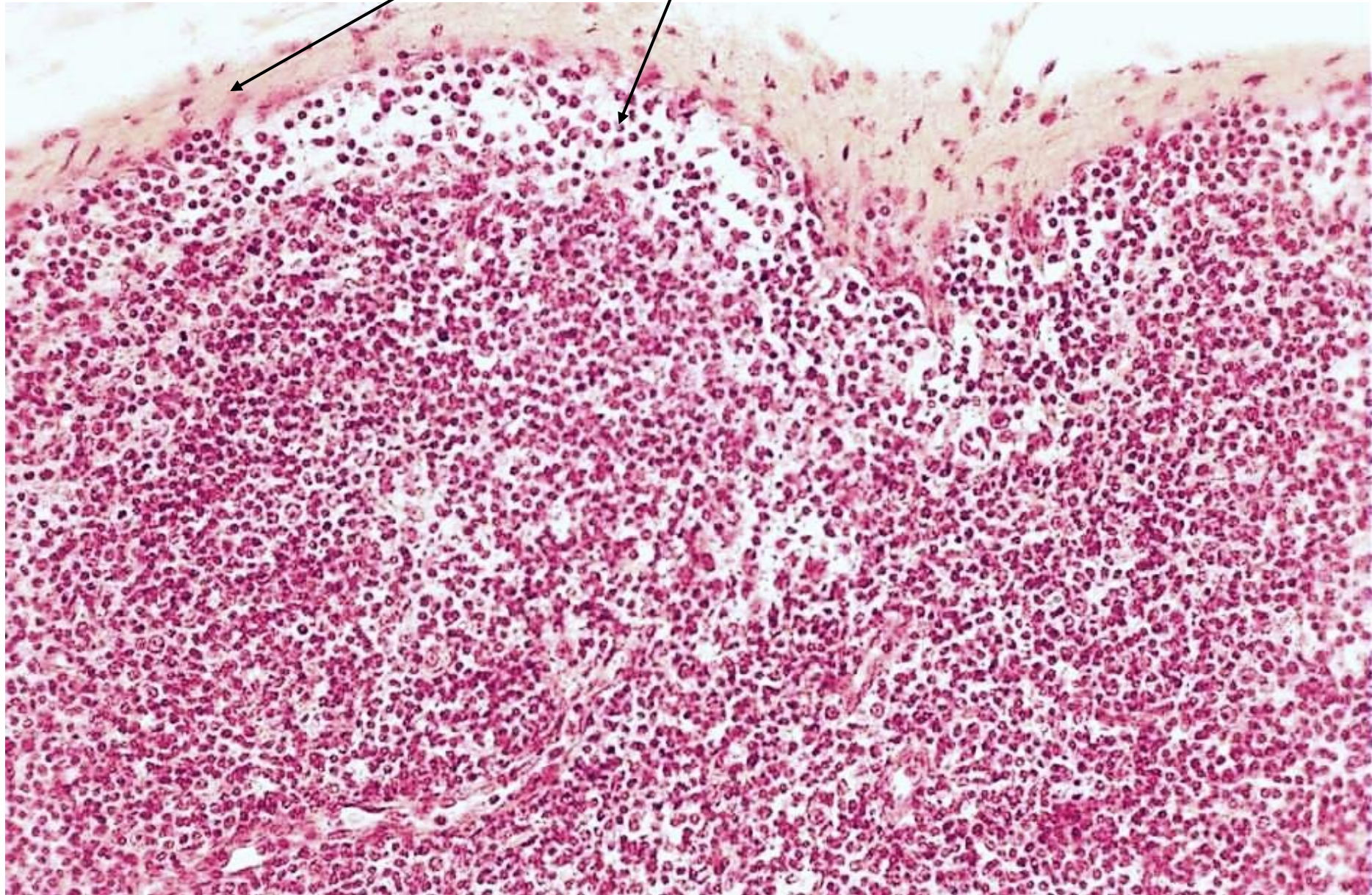


Lymph node – capsule, subcapsular (marginal) sinus, cortex



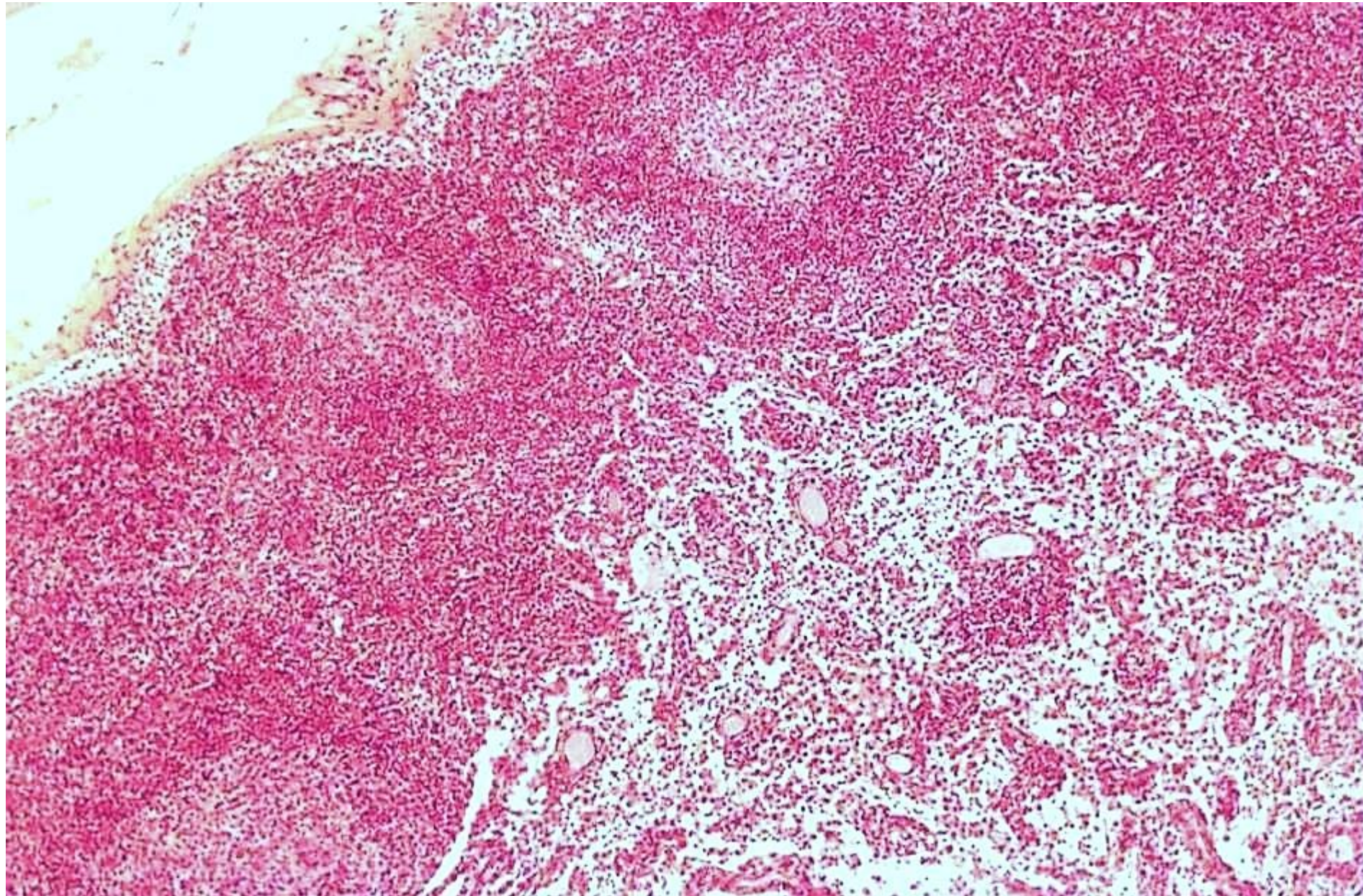


Lymph node – capsule, subcapsular (marginal) sinus, cortex



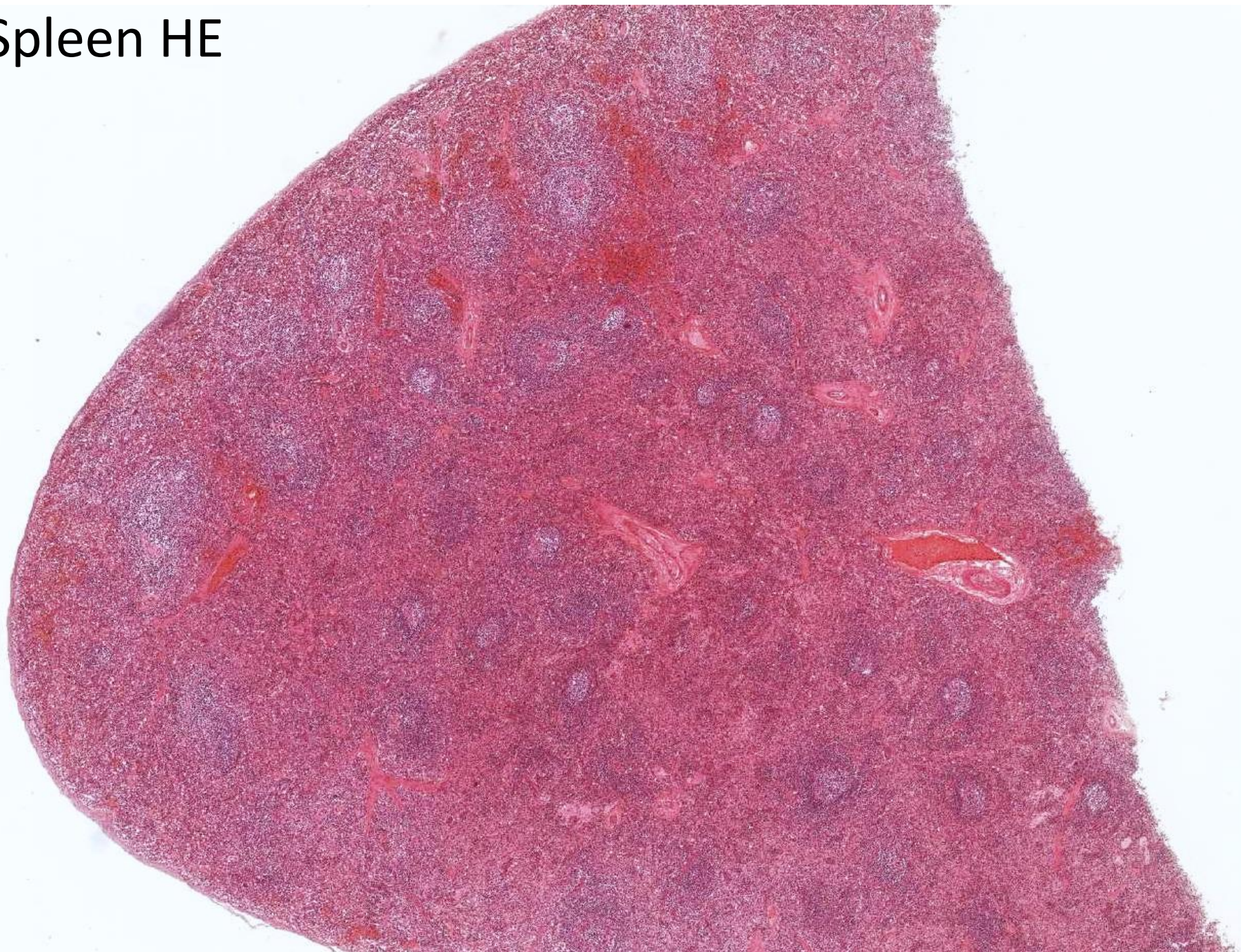


# Lymph node – cortex, medulla



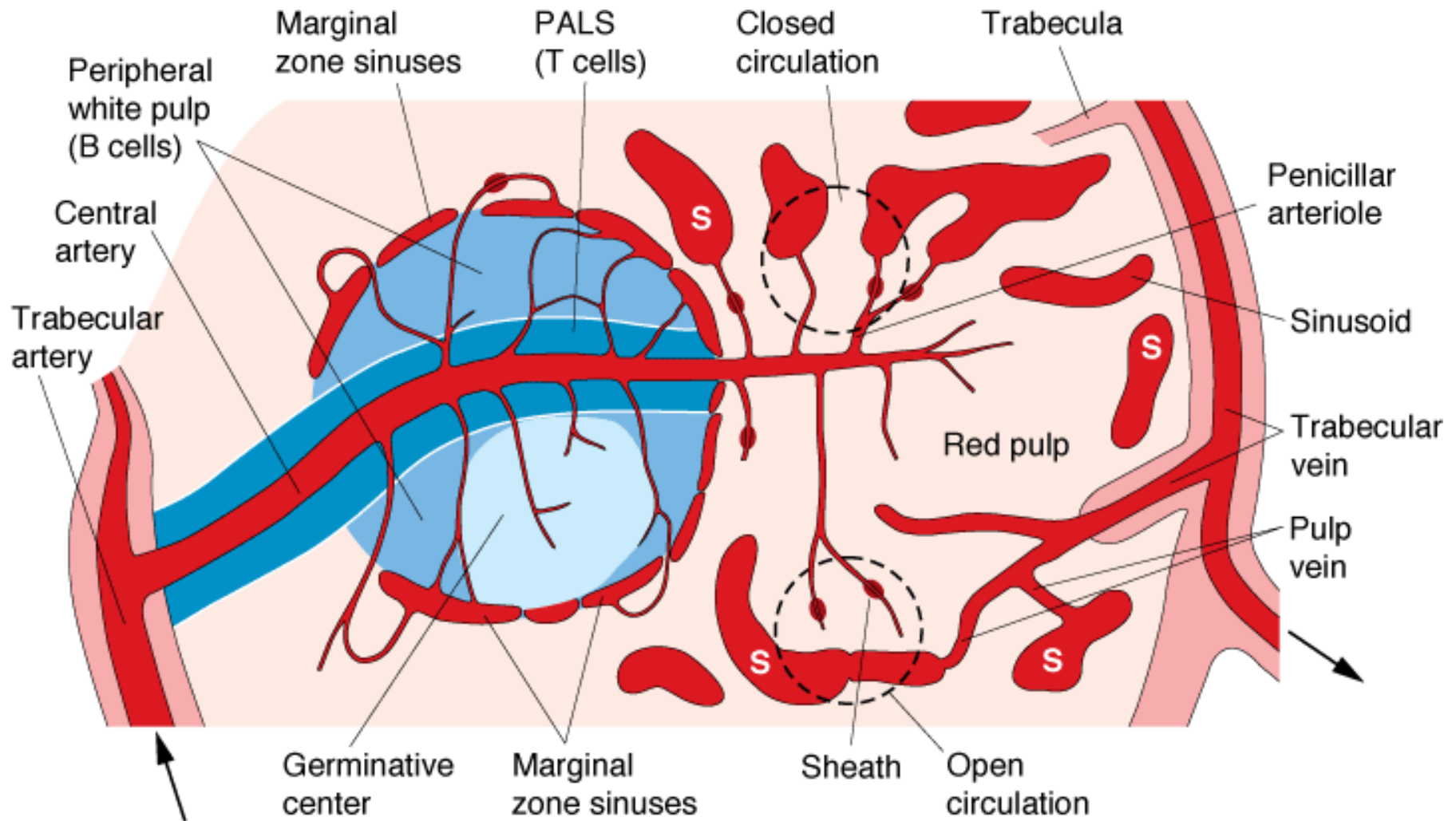


Spleen HE





# Blood circulation in the spleen

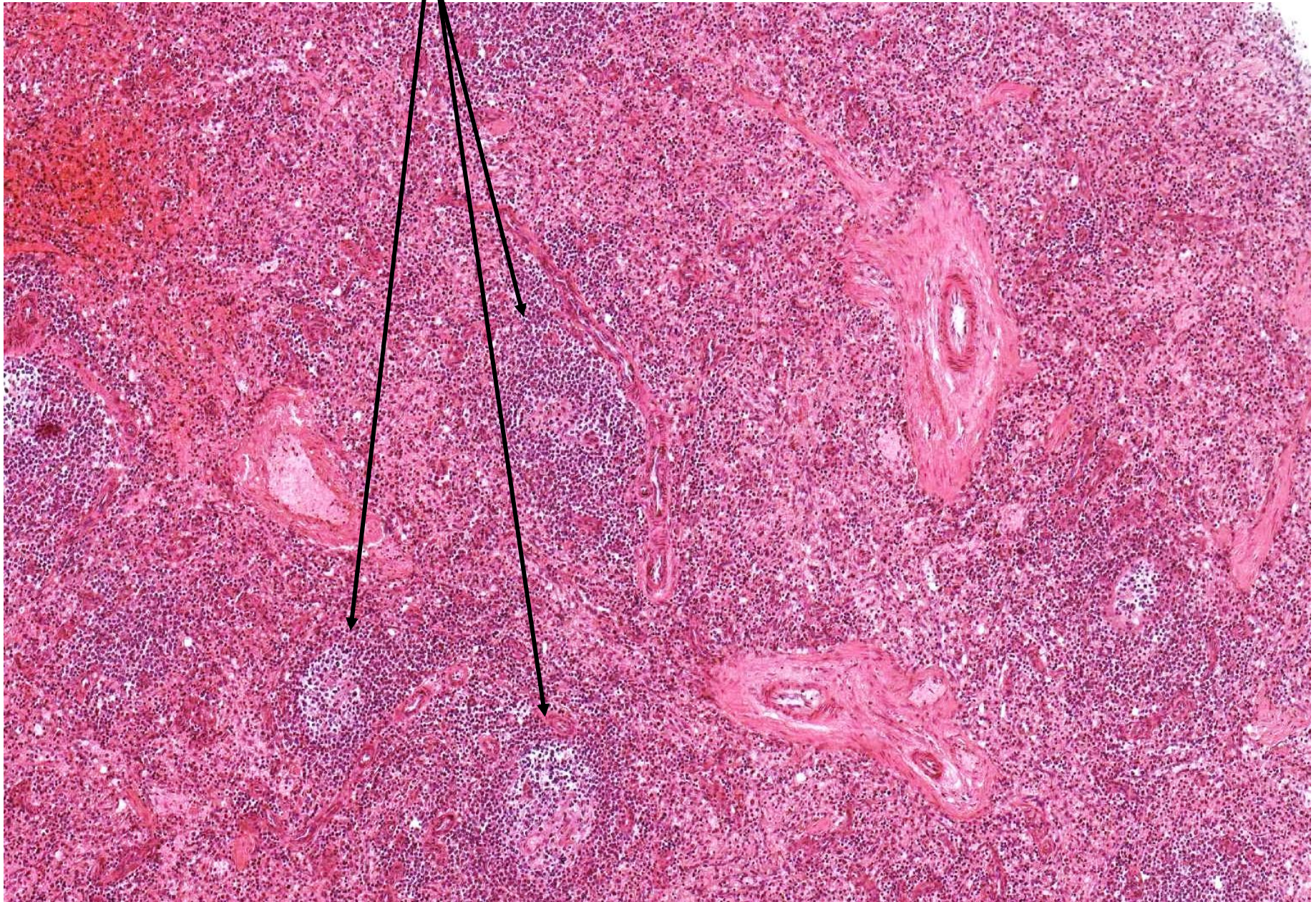


Source: Mescher AL: *Junqueira's Basic Histology: Text and Atlas, 12th Edition*: <http://www.accessmedicine.com>

Copyright © The McGraw-Hill Companies, Inc. All rights reserved.

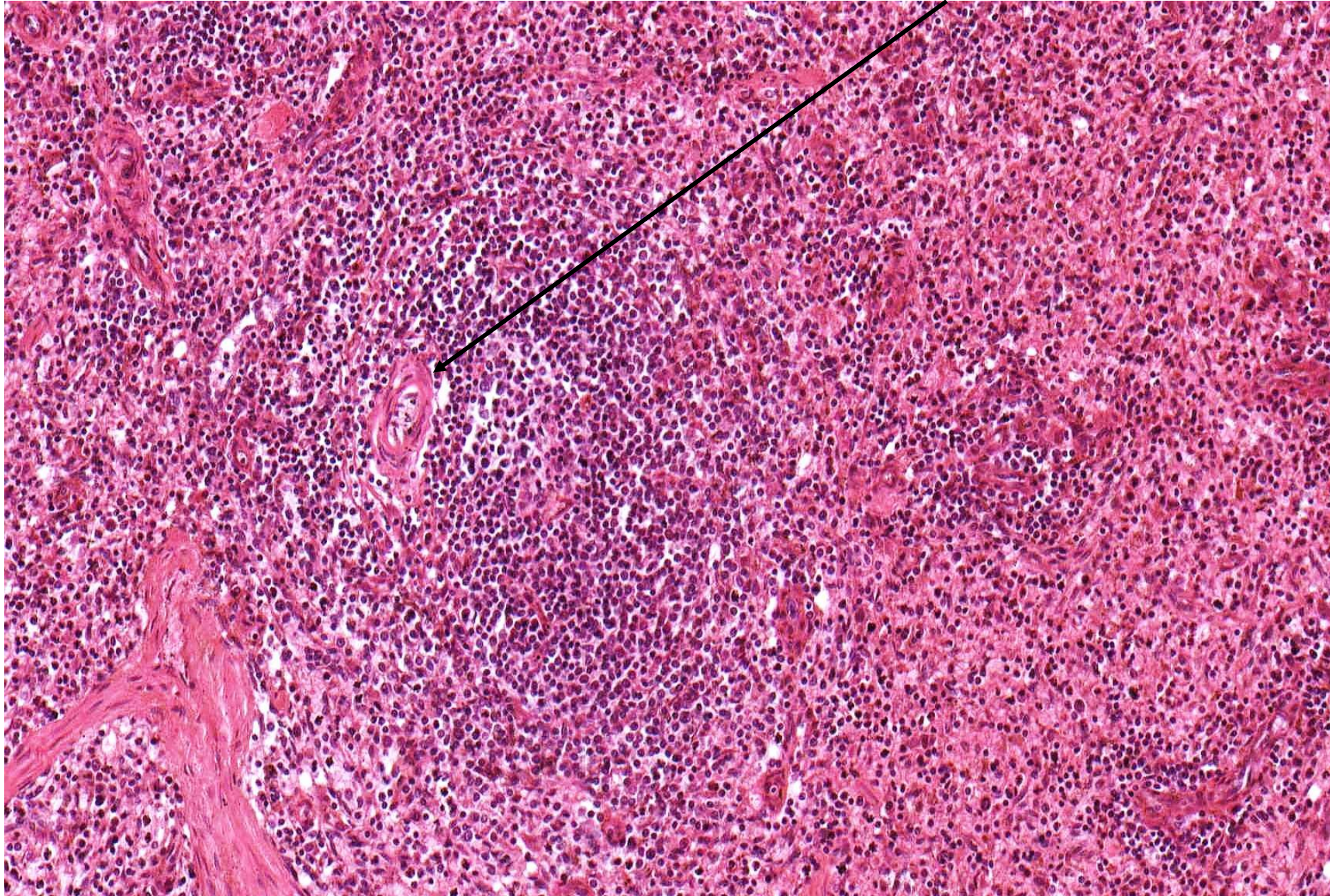


# Spleen (HE) – white and red pulp, trabeculae



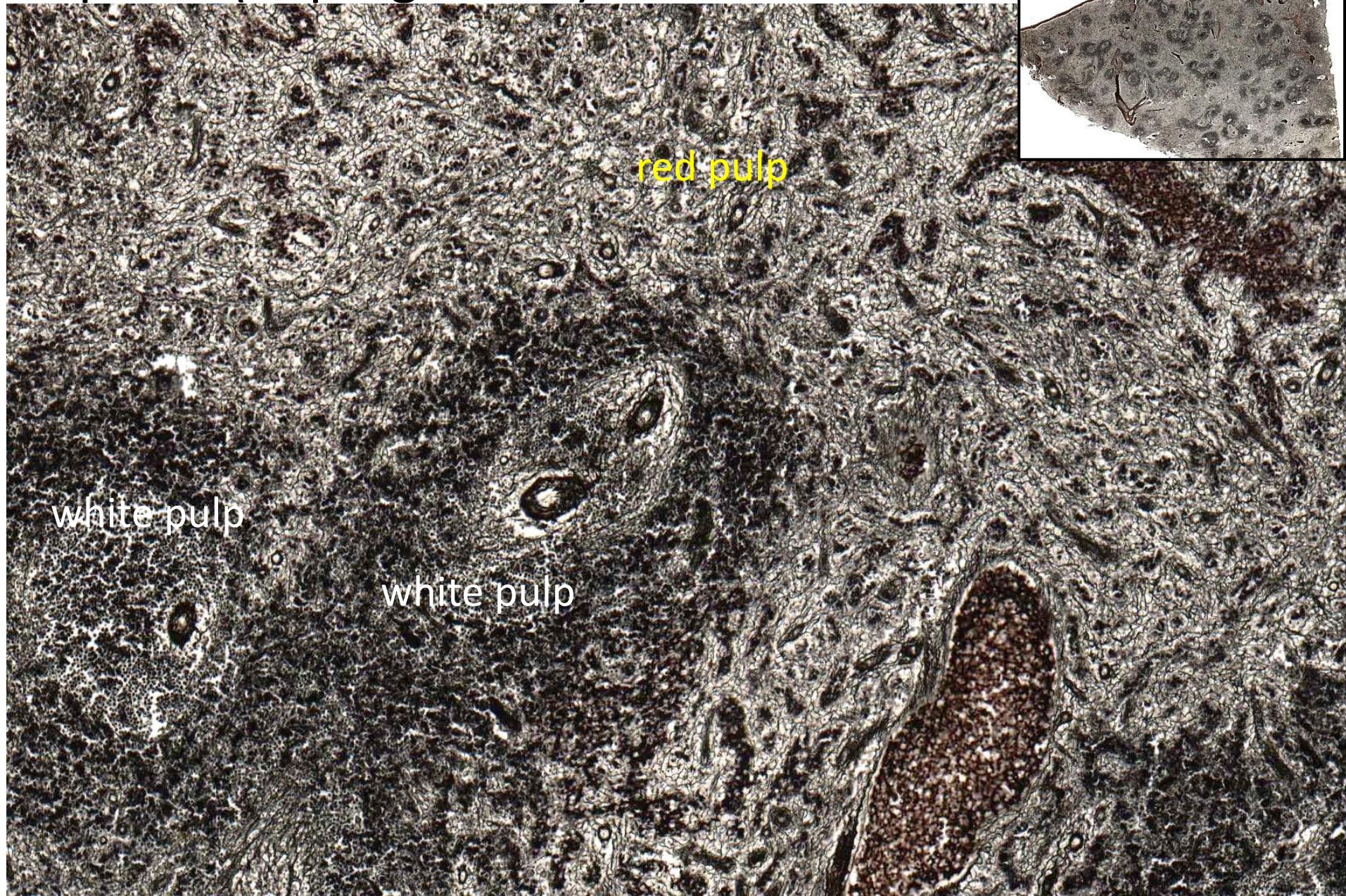


# Spleen (HE) – white and red pulp, central artery



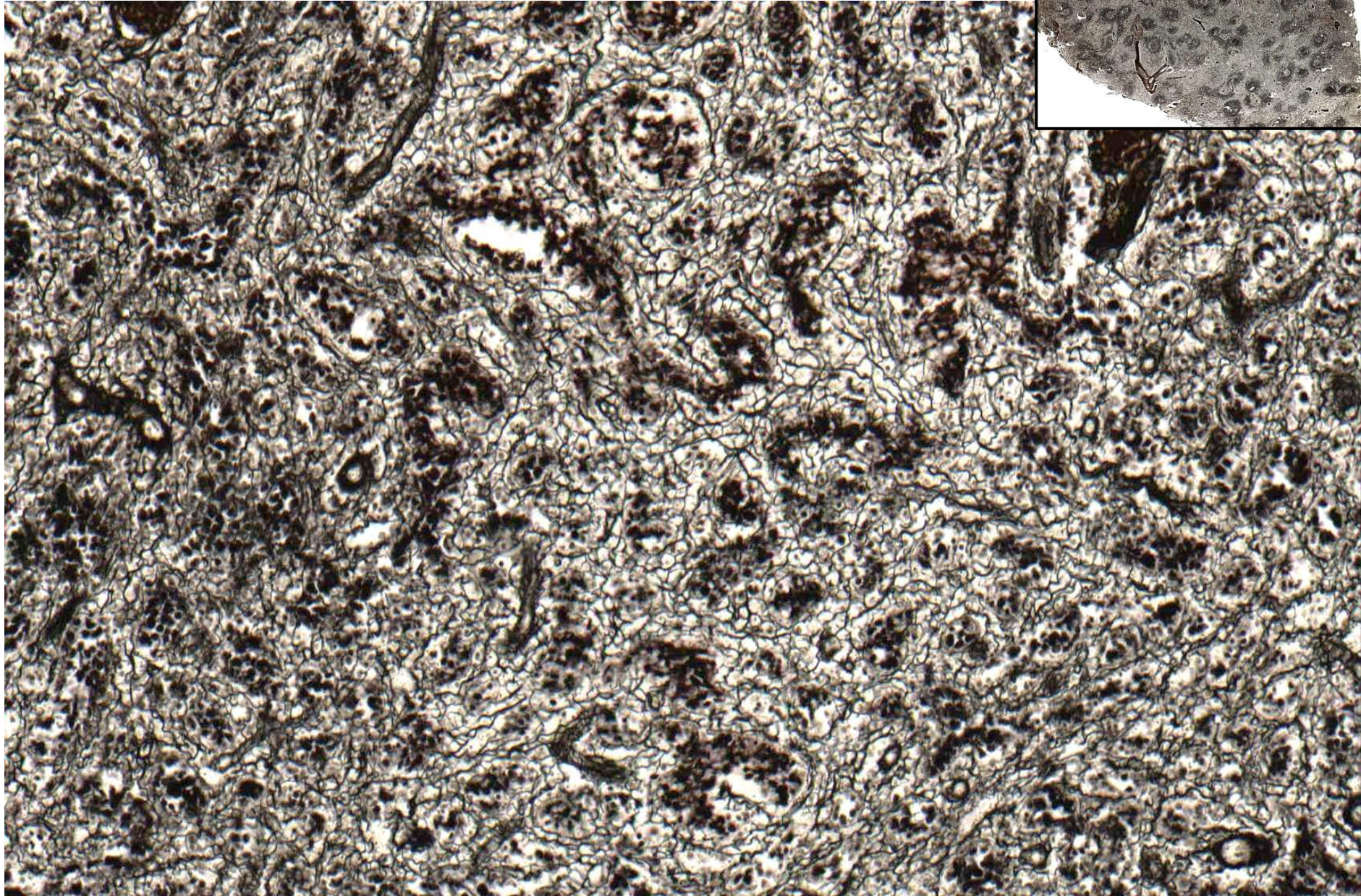


# Spleen (impregnation)



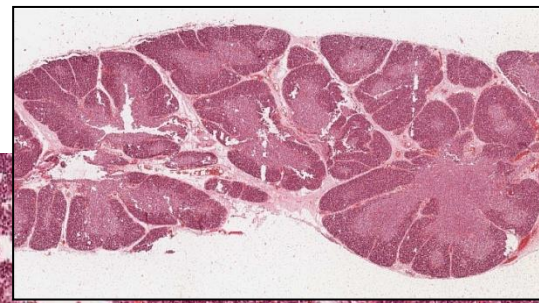


# Spleen (impregnation) – red pulp



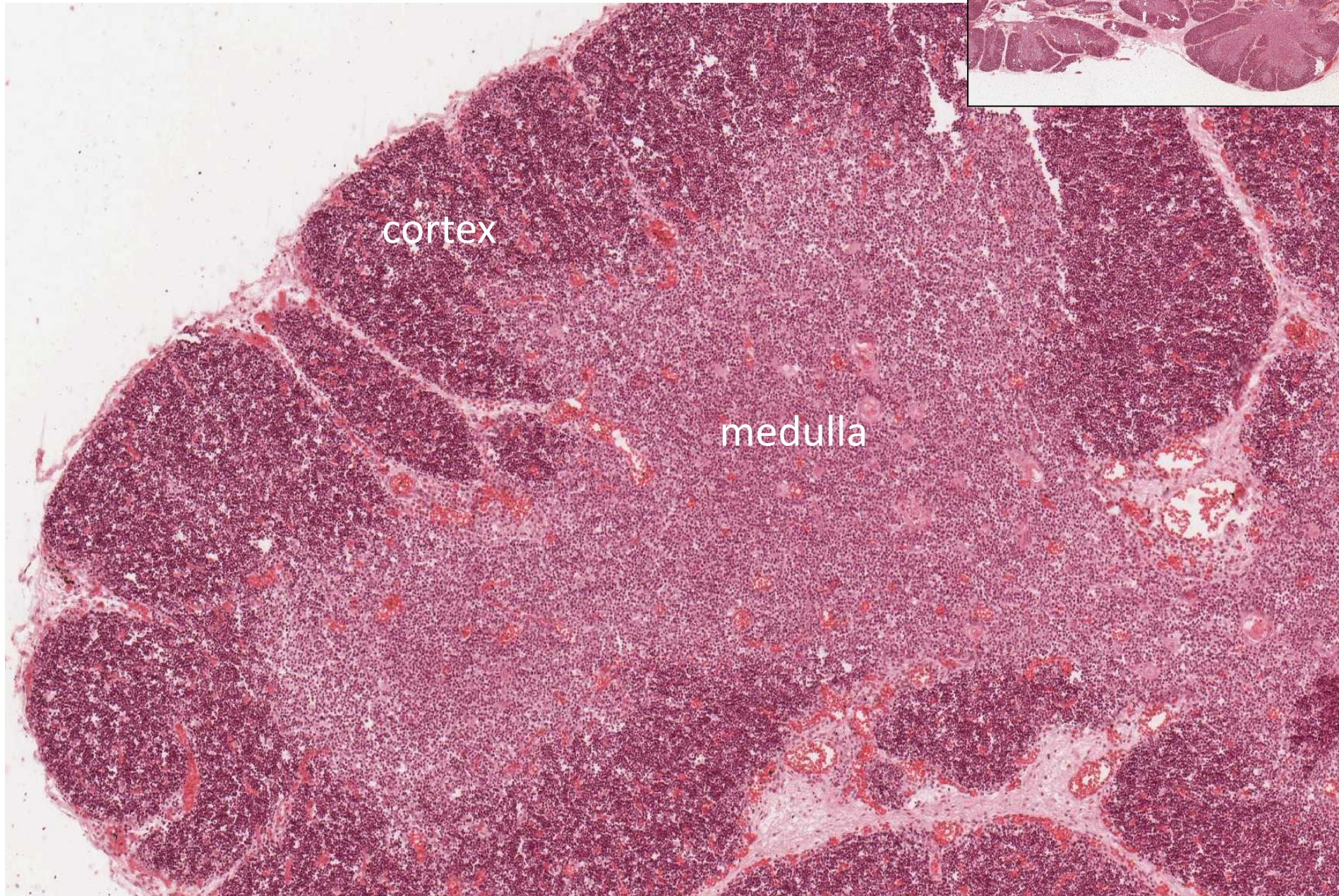


# Thymus - young (HE)

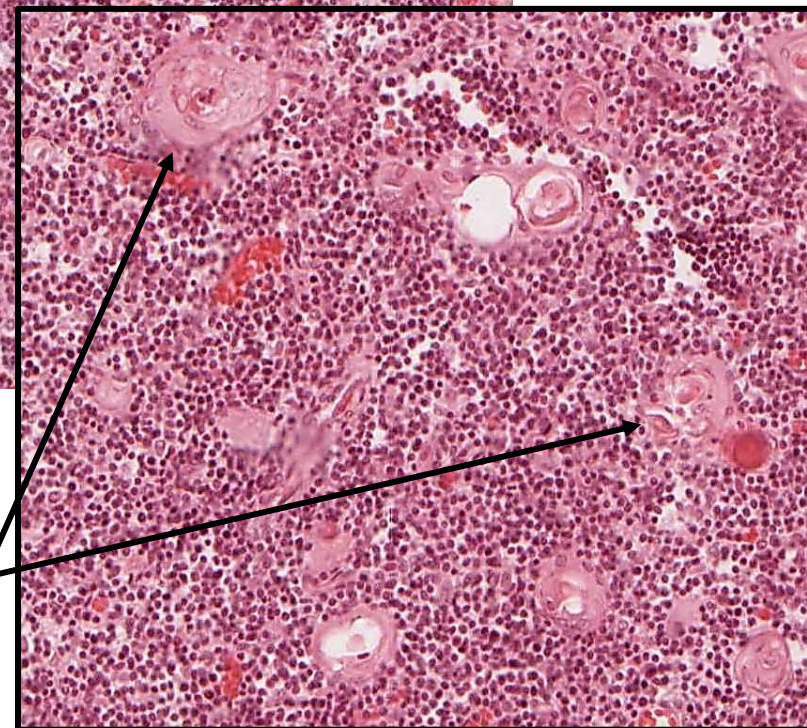
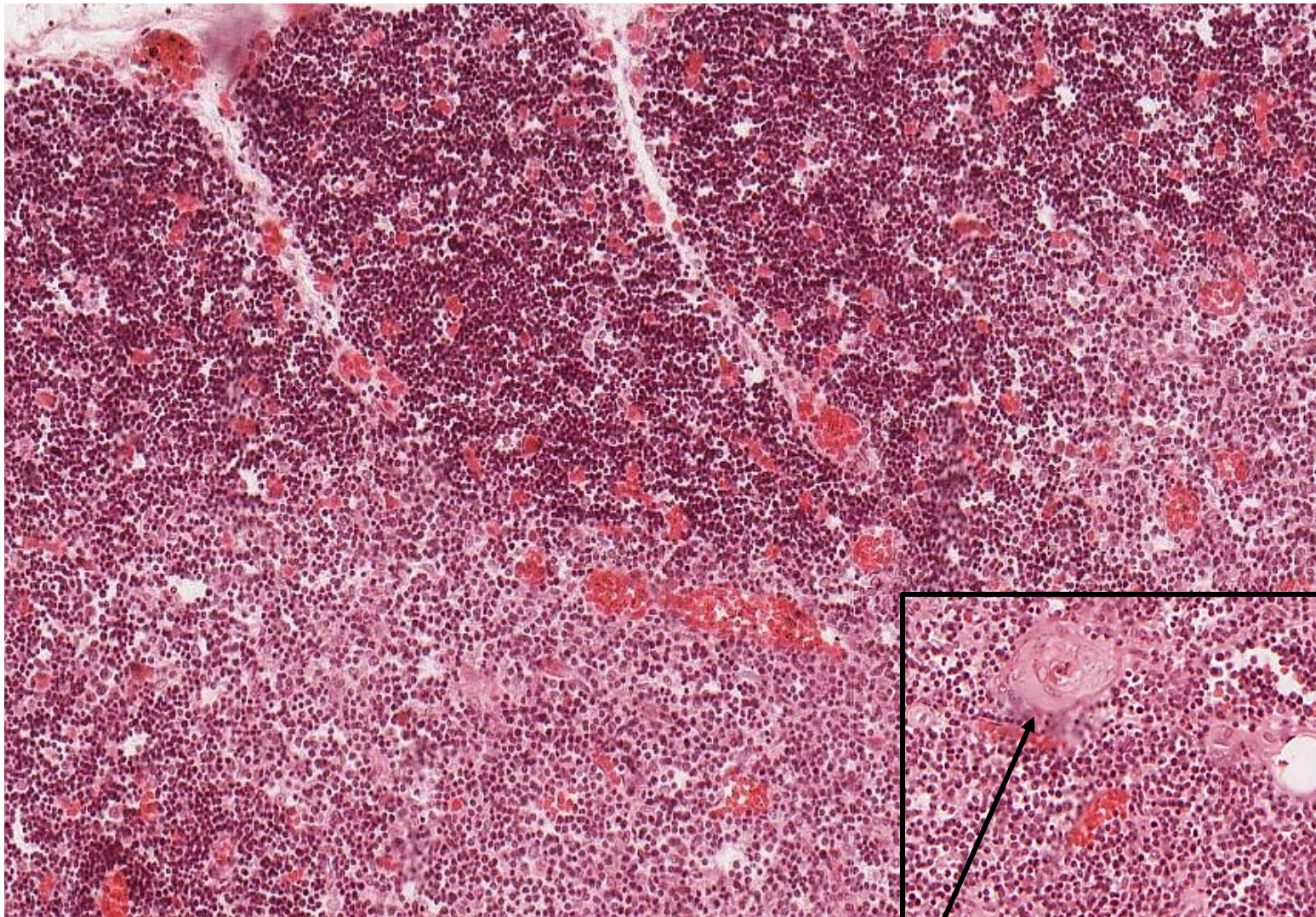


cortex

medulla





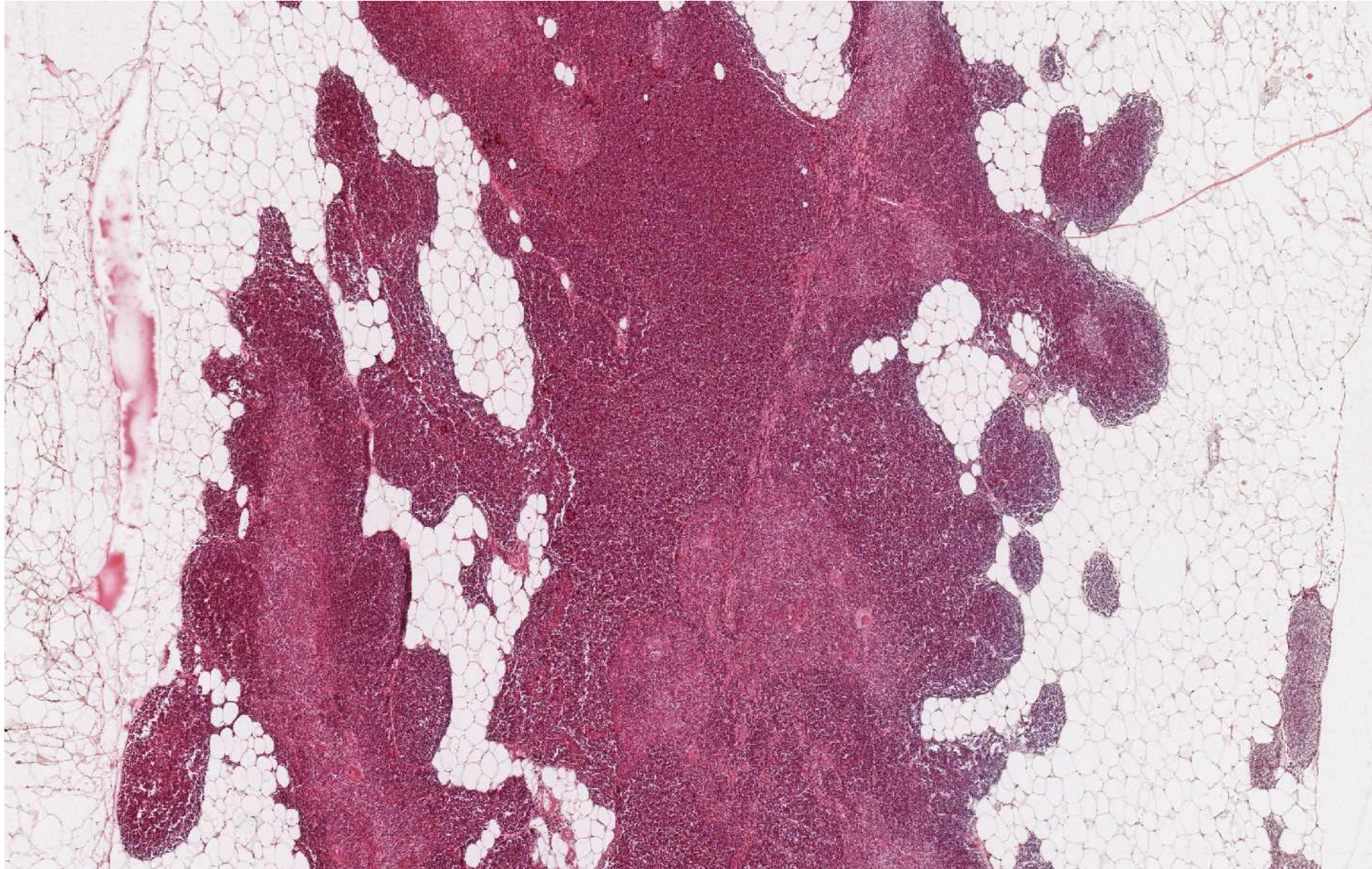


Thymus young – cortex and medulla, Hassal's corpuscles



# Thymus in involution

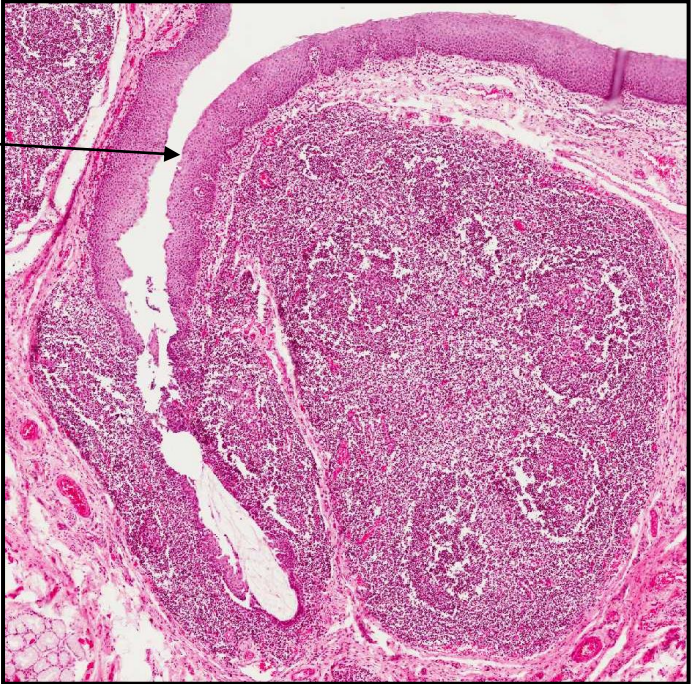
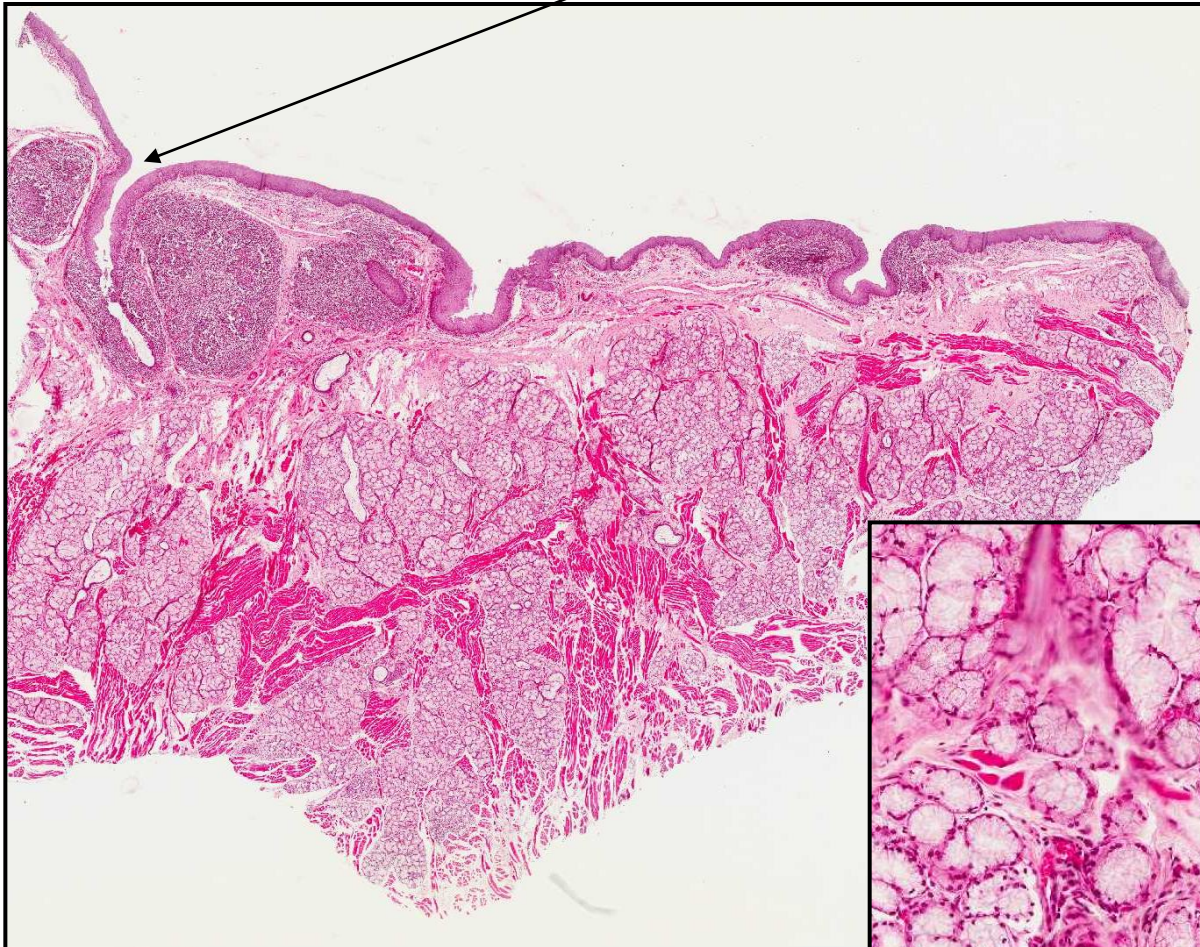
- missing cortex/medulla border
- lymph tissue replacement with CT + fat)
- Hassal's corpuscles





# Lingual tonsil

crypt

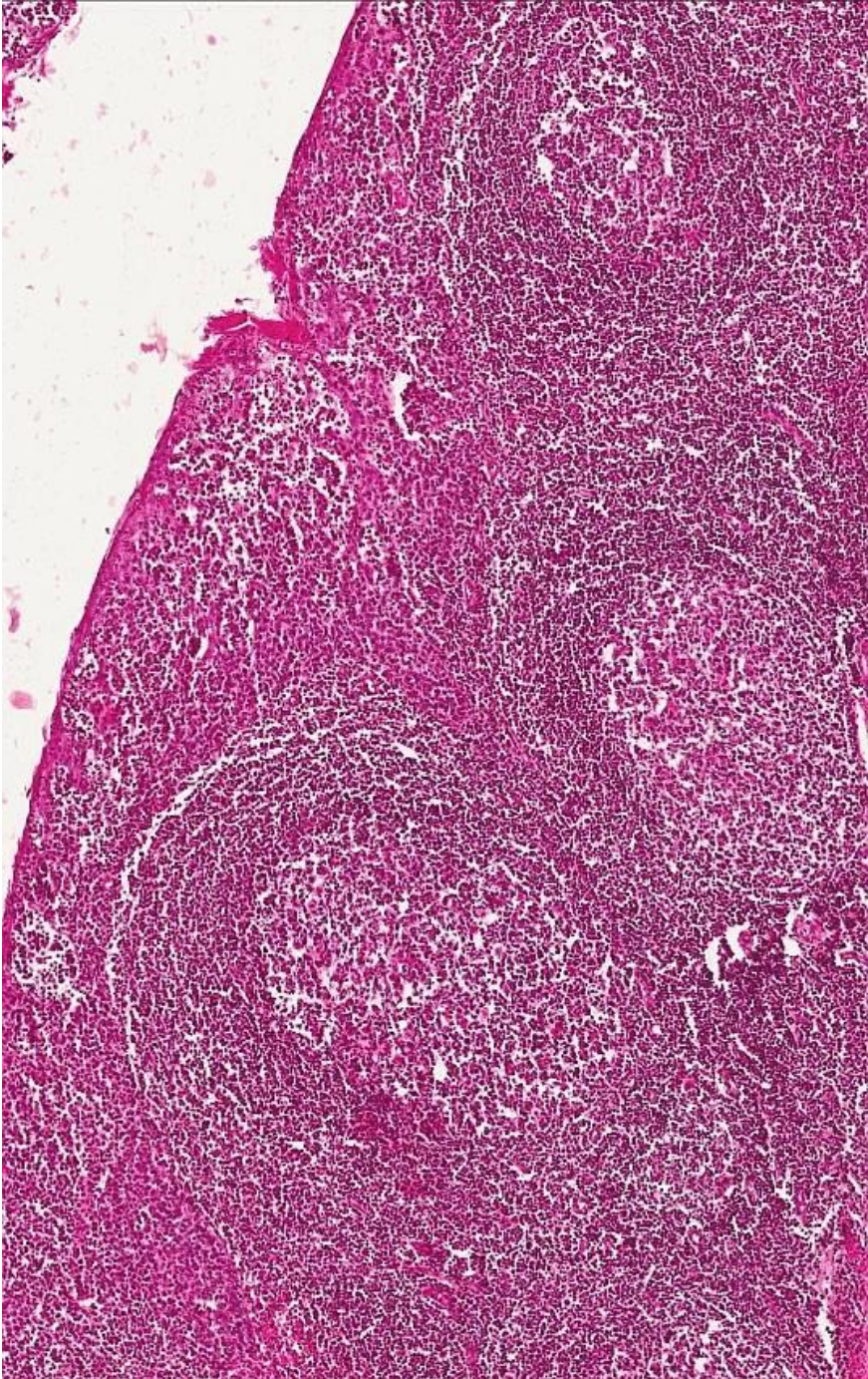


mucous glands (of Weber)

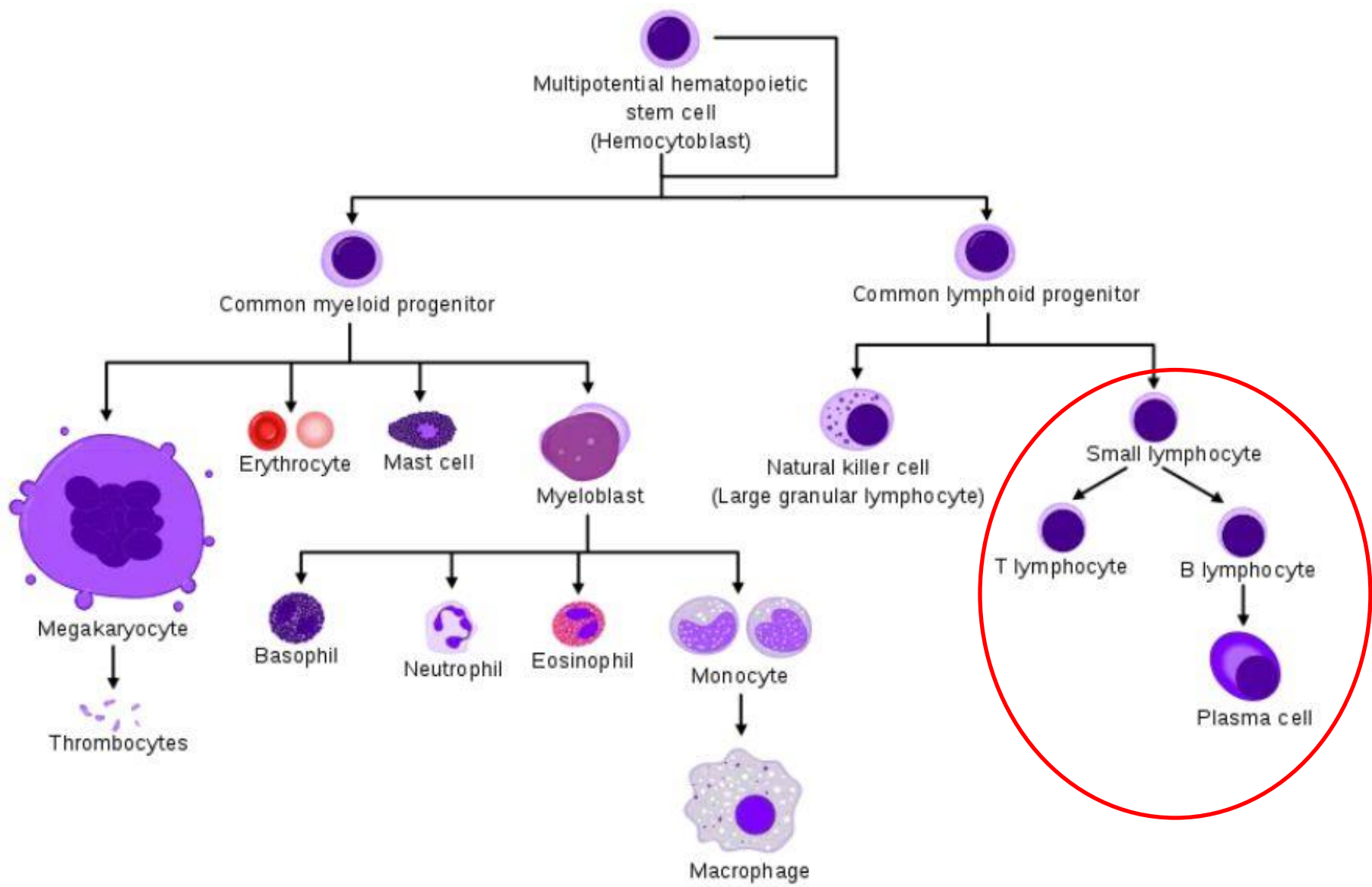


# Palatine tonsil

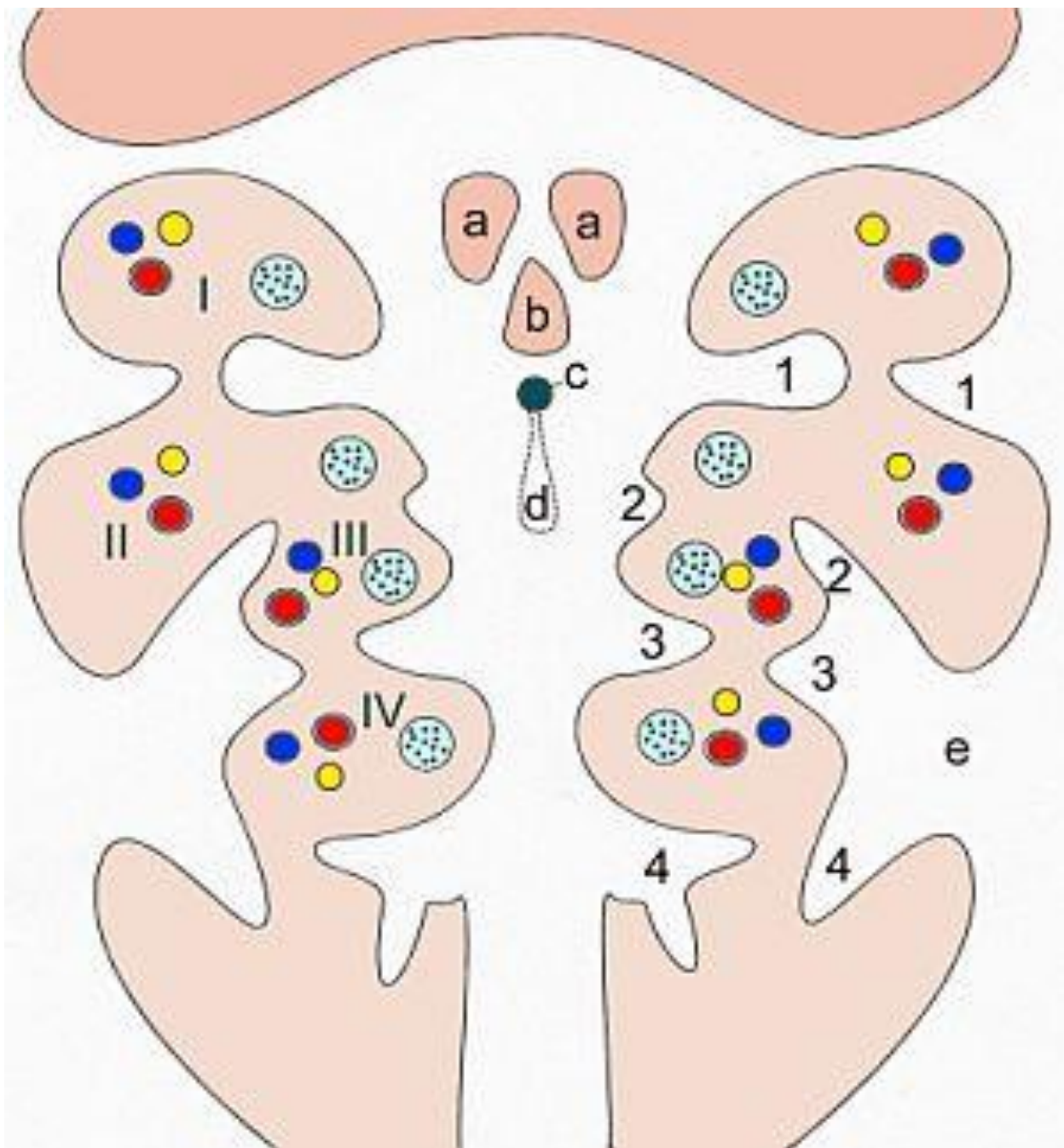
crypts















# LYMPHATIC SYSTEM

## Slides

- 66. Lymphonodus (HE)
- 67. Lien (HE)
- 68. Lien (impregnation)
- 57. Thymus - young (HE)
- 58. Thymus - in involution (HE)
  - 4. Tonsilla lingualis (HE)
  - 6. Tonsilla palatina (HE)

## Atlas

- 88. Pharyngeal apparatus