

# Male reproductive system

Aleš Hampl

October 2024

# Key components & Gross anatomy

**Paired gonads (glands) = testes**

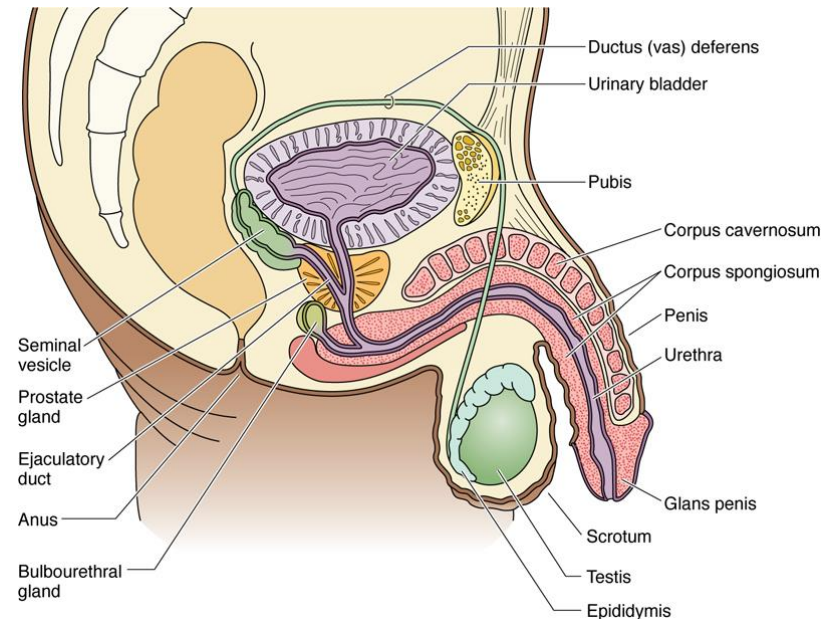
<b>Genital ducts</b>	<b>Intratesticular</b> <ul style="list-style-type: none"> <li>• Tubuli recti</li> <li>• Rete testis</li> <li>• Ductuli efferentes</li> </ul>
	<b>Extratesticular</b> <ul style="list-style-type: none"> <li>• Epididymis</li> <li>• Ductus (vas) deferens</li> <li>• Ejaculatory duct</li> <li>• Urethra</li> </ul>

## Associated glands

- Seminal vesicles (paired)
- Prostate
- Bulbourethral glands (paired)

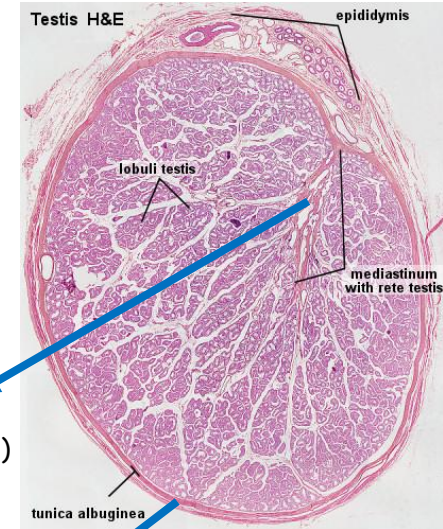
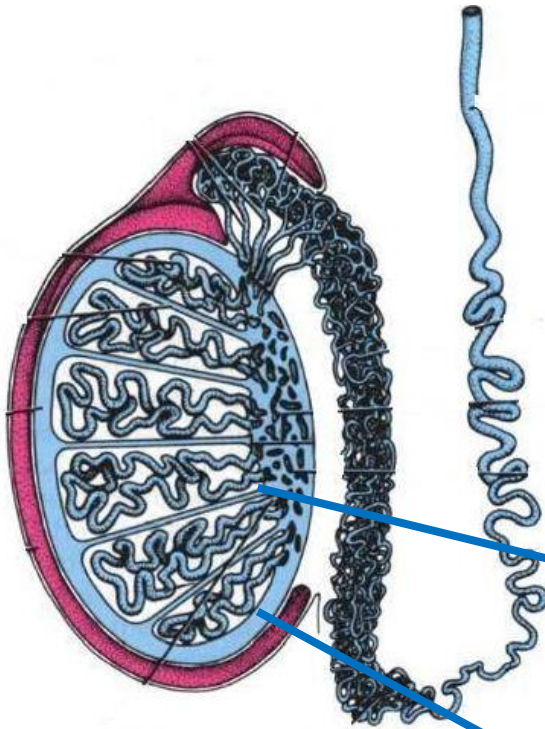
## External genital organs

- Scrotum
- Penis



# Testis - 1

Length: 4 cm  
Width: 2-3 cm  
Thickness: 3 cm



## Mediastinum + Septa

- divide testis into **lobuli** (250-300)

## Tunica albuginea - capsule

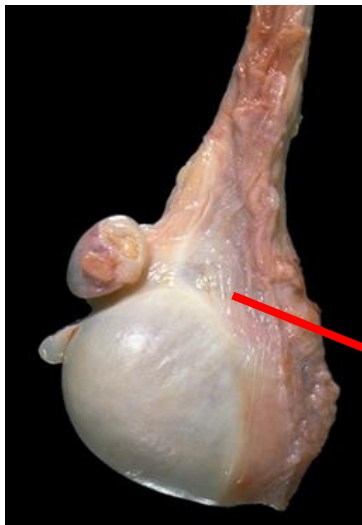
- dense connective collagenous tissue

## Tunica vasculosa

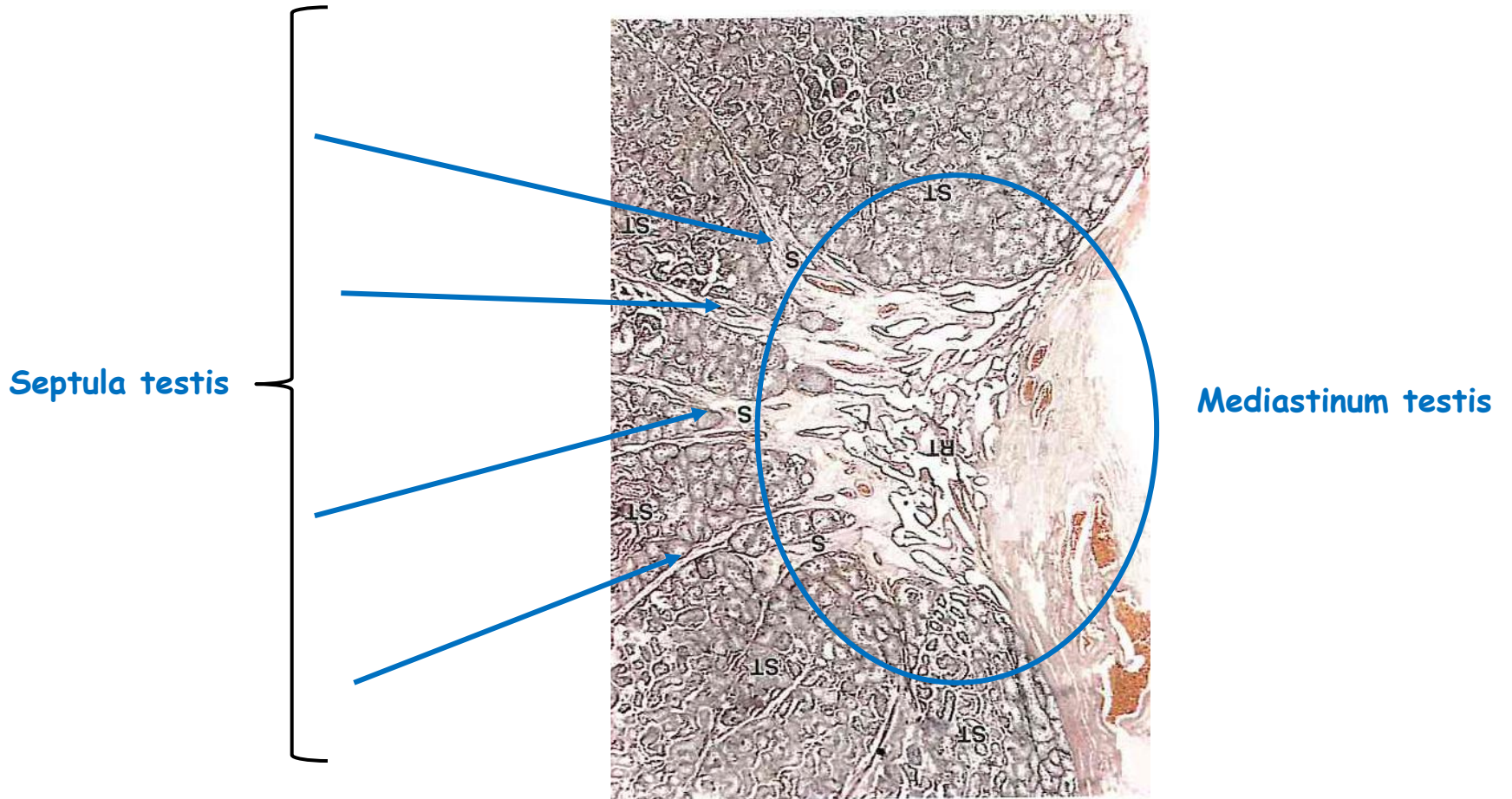
- inside of T. albuginea + adjacent to septa

## Tunica vaginalis (epiorchium + periorchium)

- serous, originates from peritoneum



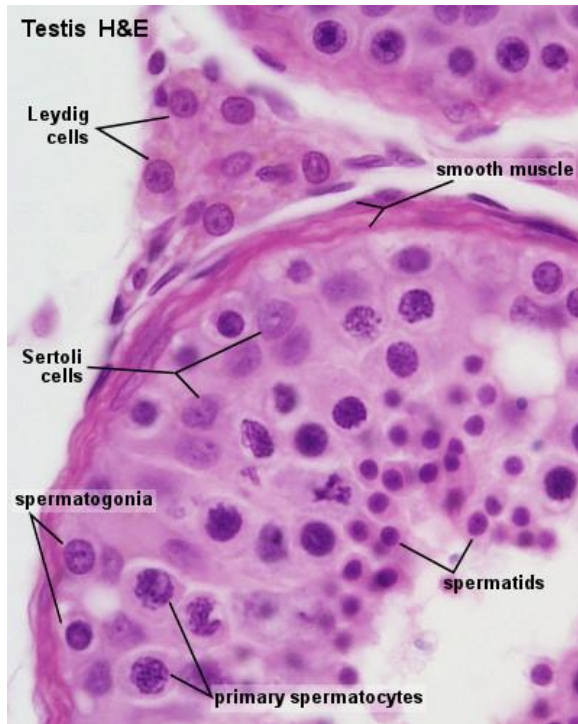
# Testis - 2



# Testis - 3

Septulum testis

Tunica albuginea



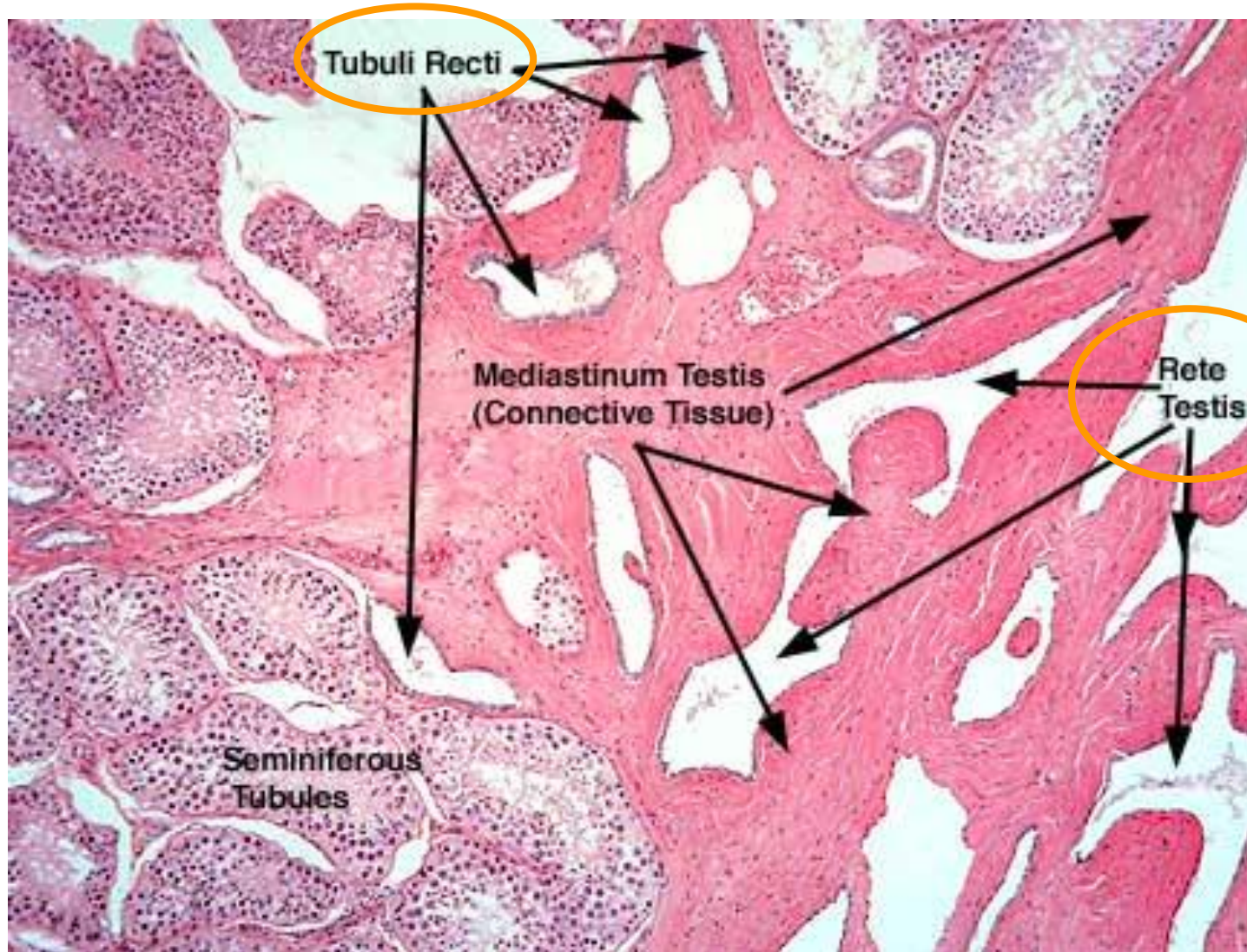
## Seminiferous tubules

- 1 to 4 in one lobule
- 1 tubule - 30 to 70 cm in length
- total number about 1000
- total length about 500 m

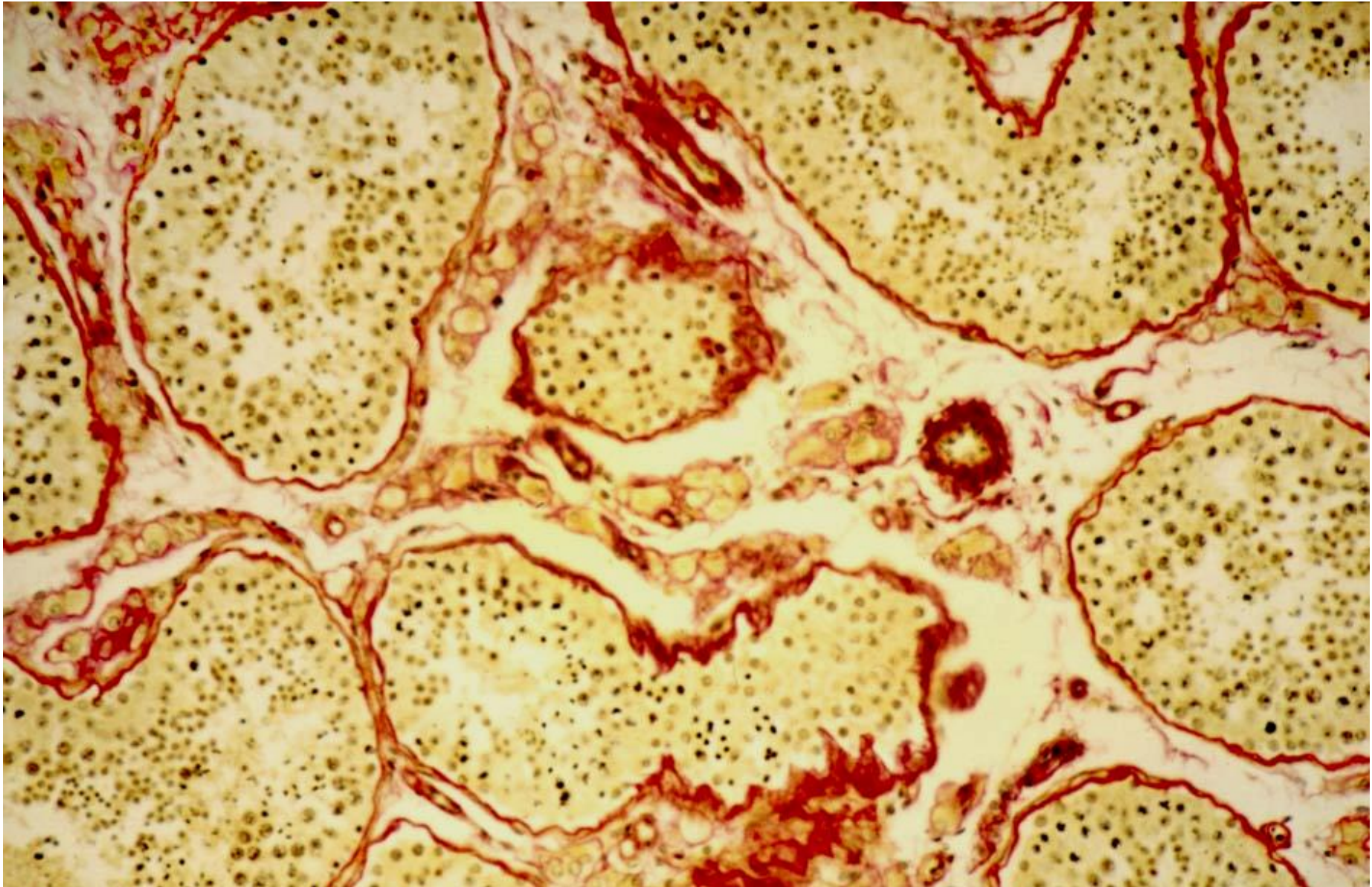
## Interstitial tissue

- derived from T. vasculosa
- contains dispersed Leydig cells (brown)

# Testis - 4 - continuation of seminiferous tubuli



# Testis - 5



# Testis - 6 - interstitium - Leydig cells

## Interstitium

- loose connective tissue
- fenestrated capillaries + lymphatics + nerves
- mast cells + macrophages + **Leydig cells**

Myofibroblasts

Capillaries



Leydig cells

- round shaped
- large centrally located nuclei
- eosinophilic cytoplasm
- lipid droplets
- **testosterone** synthesis

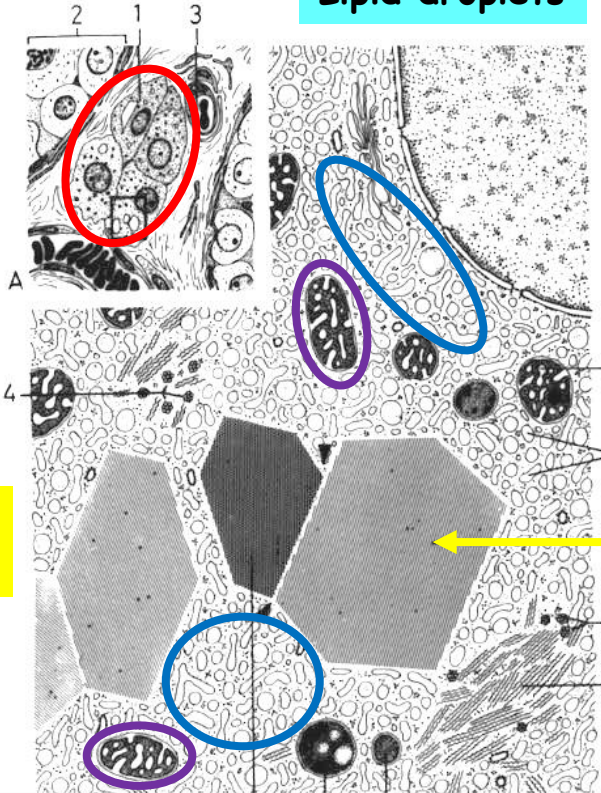


# Testis - 7 - interstitium - Leydig cells

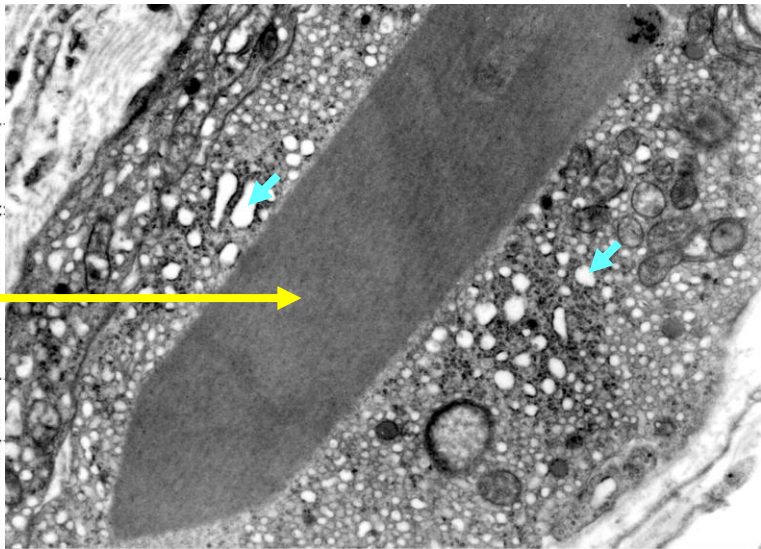
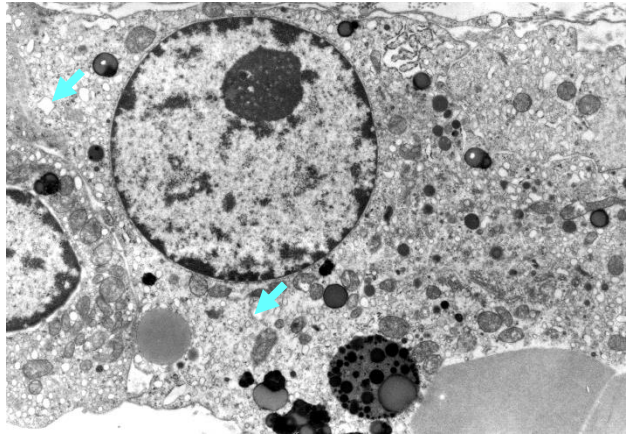
Mitochondria  
+  
Smooth ER

Testosterone

Lipid droplets



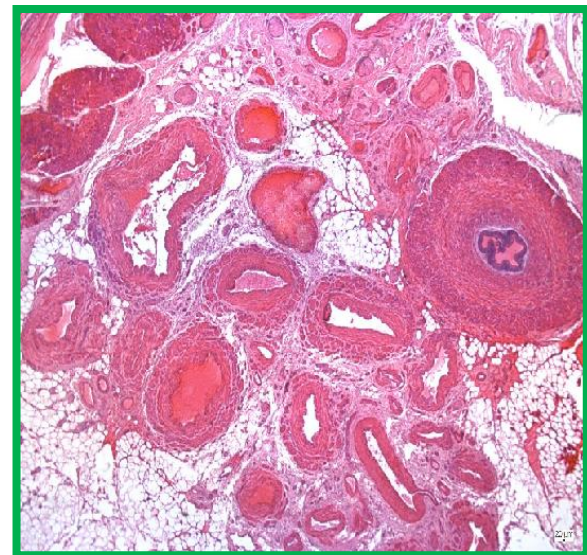
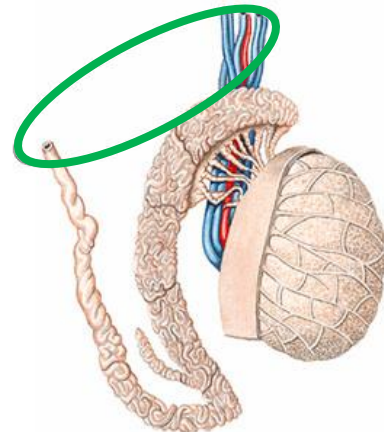
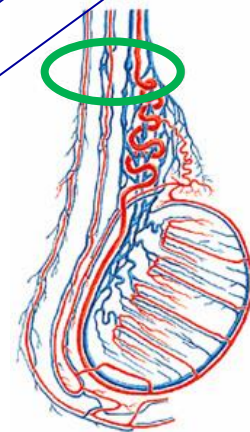
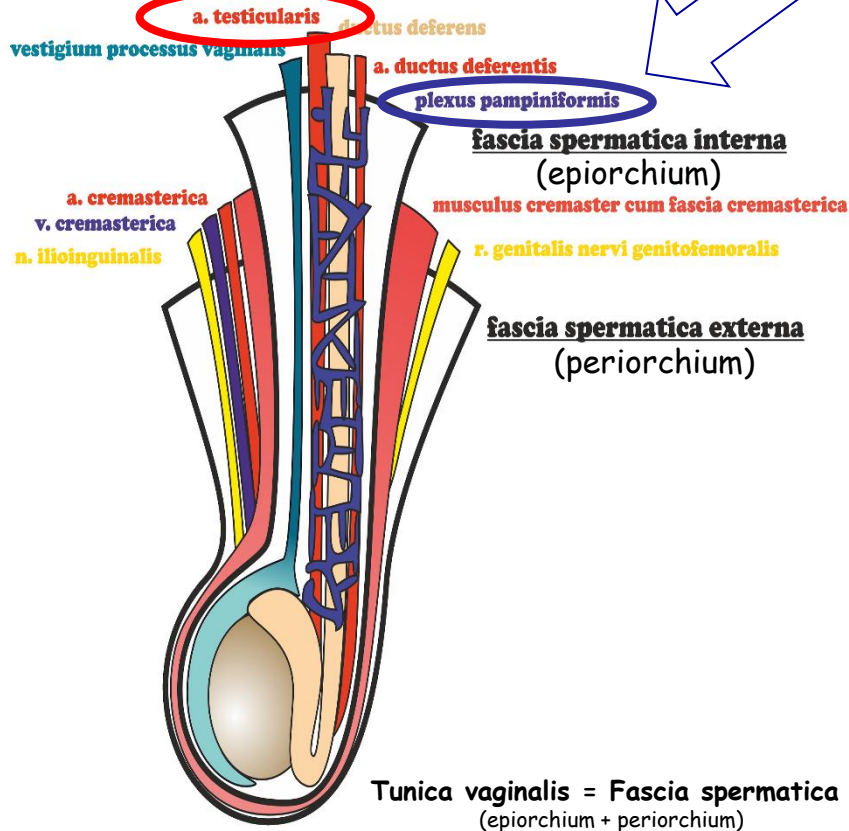
crystals  
of Reinke



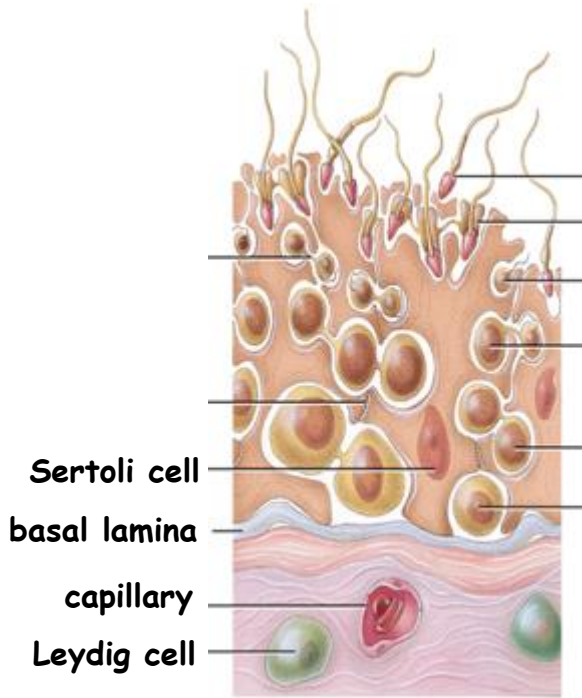
# Testis - 8 - Blood supply - Plexus pampiniformis

## Spermatic cord

**Funiculus spermaticus**



# Testis - 9 - Seminiferous / Germinal epithelium



# Testis - 10 - Sertoli cells

## Morphology:

- tall, columnar
- highly folded membranes, undistinguishable boundaries
- hosts 30 to 50 germ cells
- abundant SER, minimal RER
- numerous mitochondria + well developed Golgi
- abundant cytoskeletal elements
- **occluding + gap junctions**

## Function:

- support - physical + nutritional
- blood-testis barrier
- phagocytosis
- secretion of sperm transporting fluid + fructose
- endocrine: **anti-Mullerian hormone** + **inhibin** + **androgen-binding protein**



adluminal  
compartment

basal  
compartment

Sertoli - Sertoli  
junctional complexes  
=  
blood-testis barrier  
occluding + gap junctions

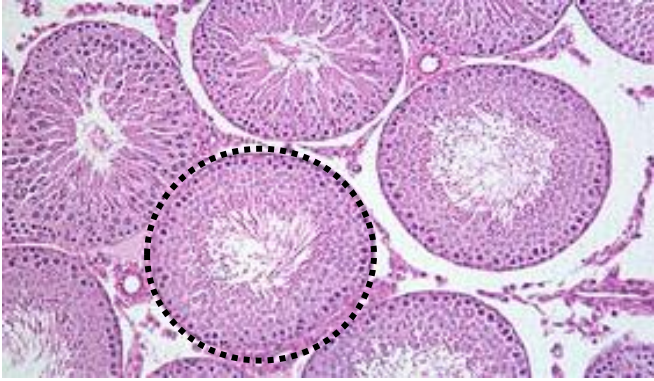
# Testis - 11 - Sertoli cells - Junctional complexes



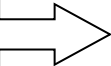
Sertoli-to-Sertoli

Sertoli-to-Spermatid

# Spermatogenesis

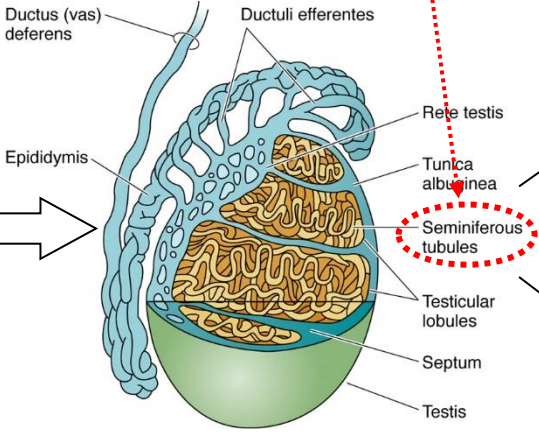
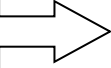


Before puberty

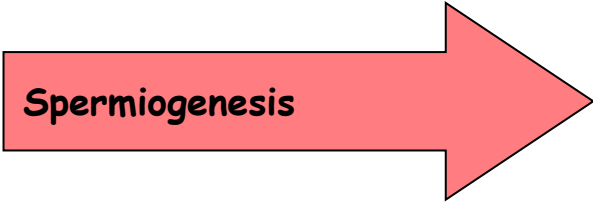
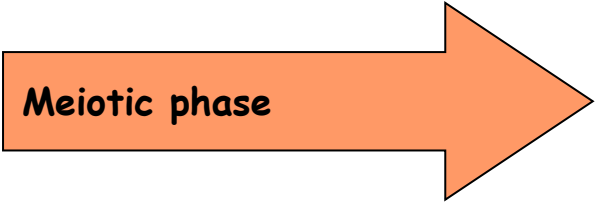
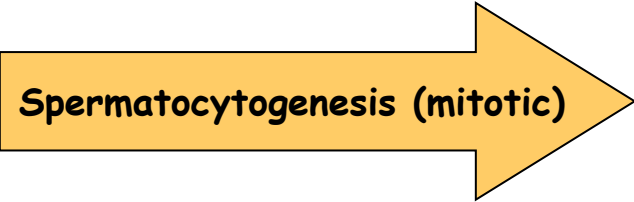
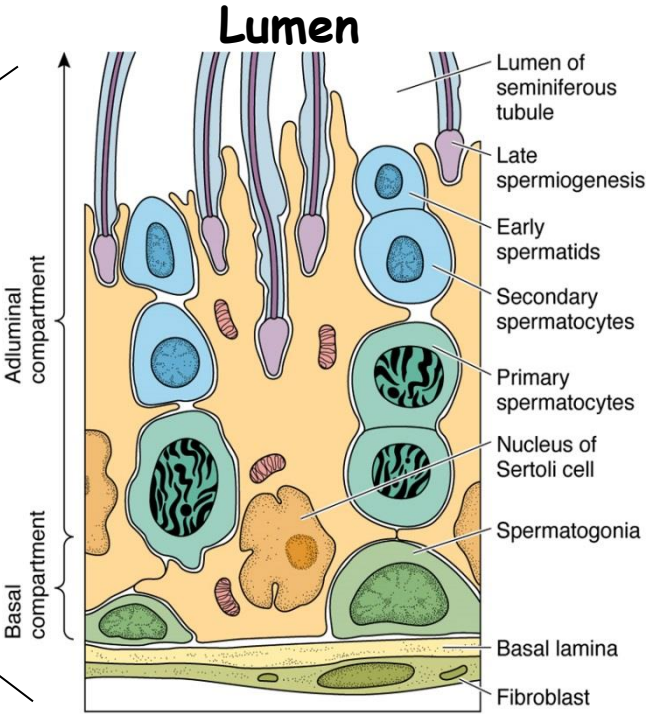


Slowly mitotically dividing spermatogonia in cords

After puberty



~0.25 mm  
~0.5 km



# Spermatogenesis

BASAL

  $A_0$  Spermatogonia - **Stem cells**

  $A_1$  Spermatogonia

  $A_2$  Spermatogonia

  $A_3$  Spermatogonia

 B Spermatogonia

- Mitotic divisions
- Connected to basal membrane

ADLUMINAL

 Primary Spermatocytes -  $2N, 4C$

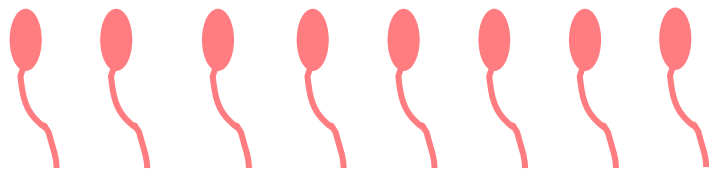
 Secondary Spermatocytes -  $1N, 2C$

 Spermatides -  $1N, 1C$

1. Meiotic division

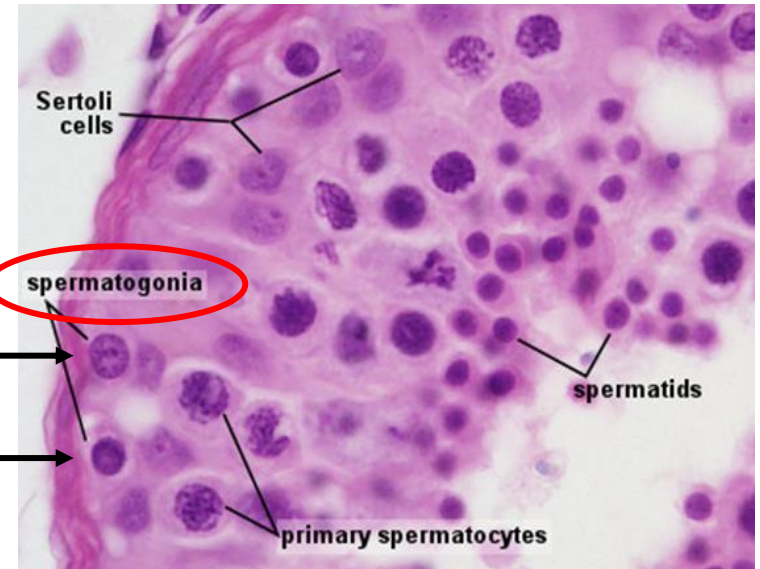
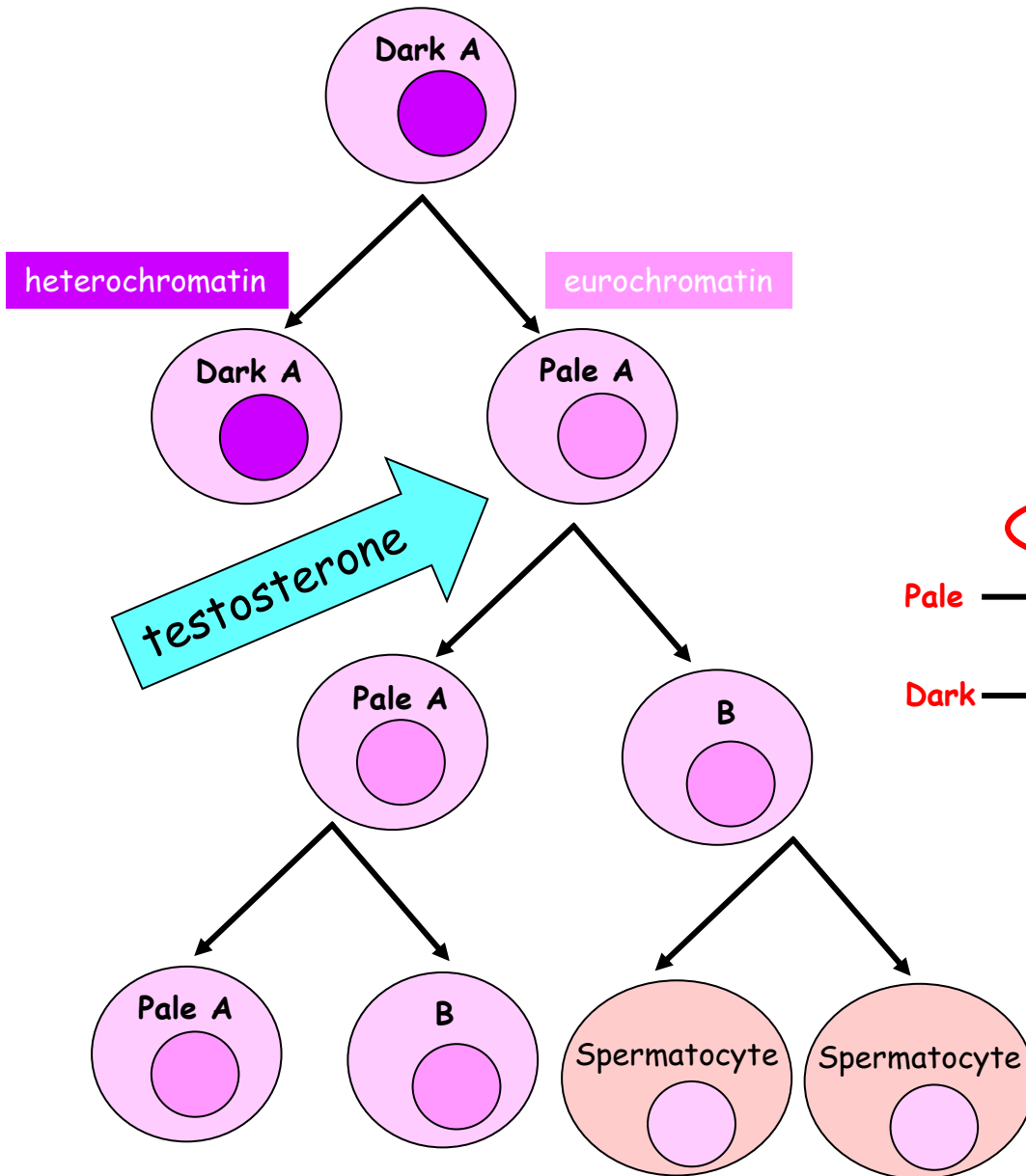
2. Meiotic division

- Spermiogenesis
- No division
- Differentiation



# Spermatogenesis - Spermatogonia

About 12  $\mu\text{m}$

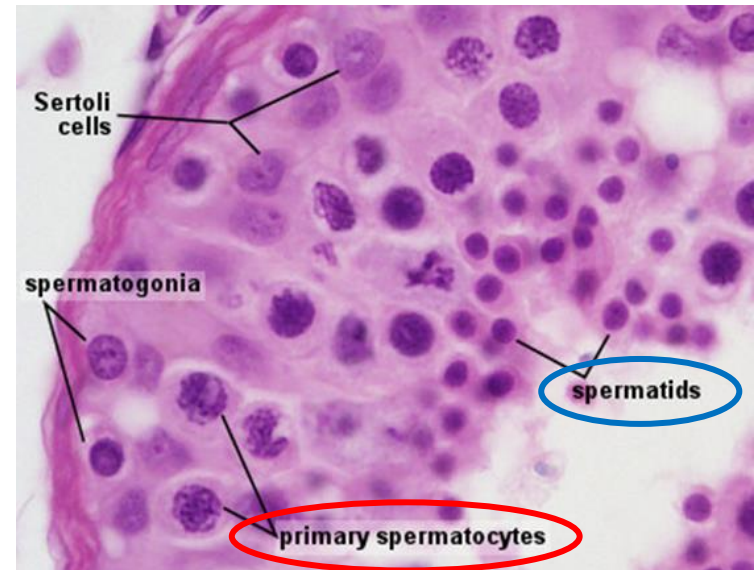
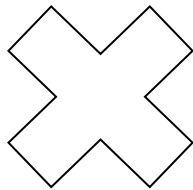




# Spermatogenesis - Spermatocytes

## Primary spermatocytes

- largest germ cells (16  $\mu\text{m}$ )
- at various stages of MeI 1 (~24 days)
- from basal to adluminal compartment
- occlusion junctions with Sertoli cells



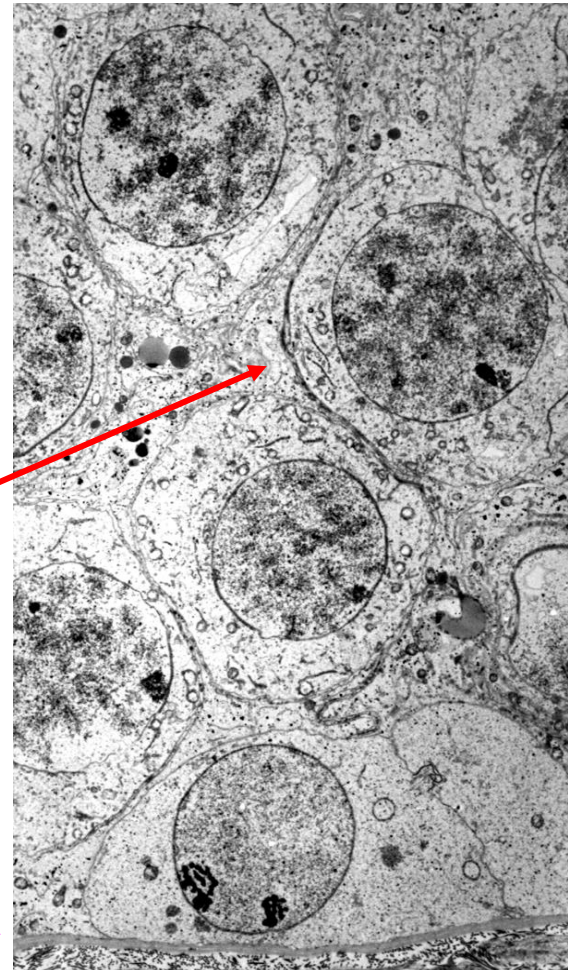
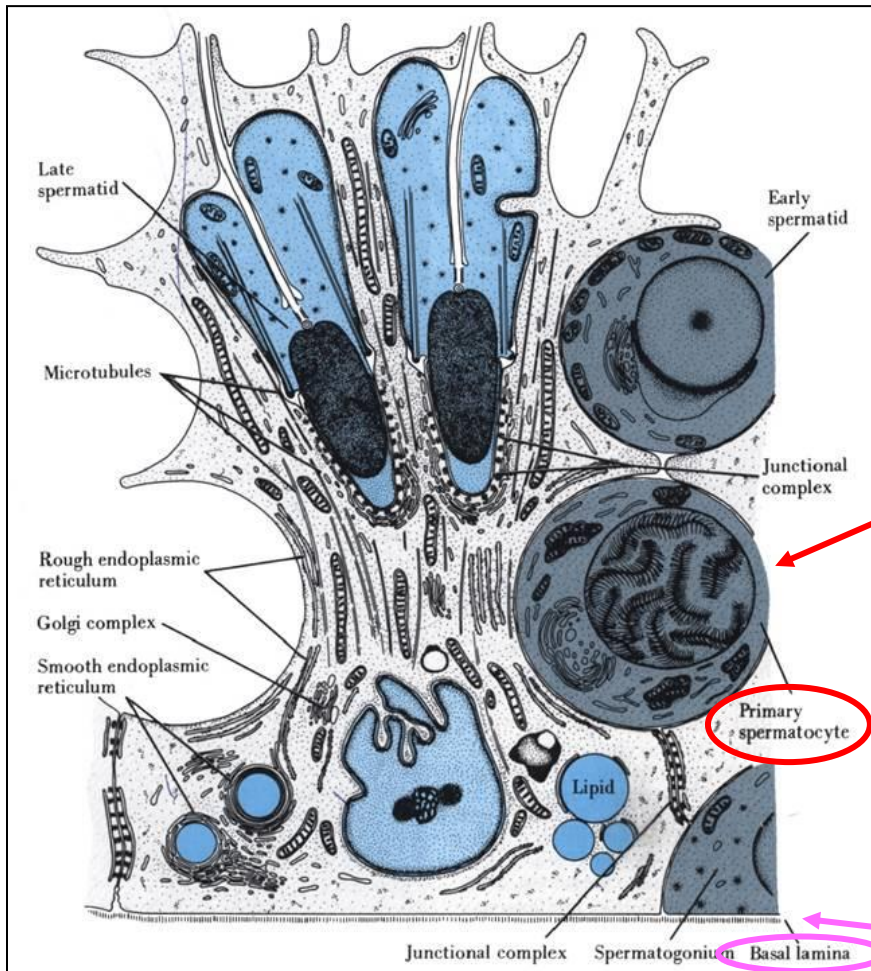
## Secondary spermatocytes

- smaller (12  $\mu\text{m}$ )
- short living (~8 hrs)
- infrequently seen

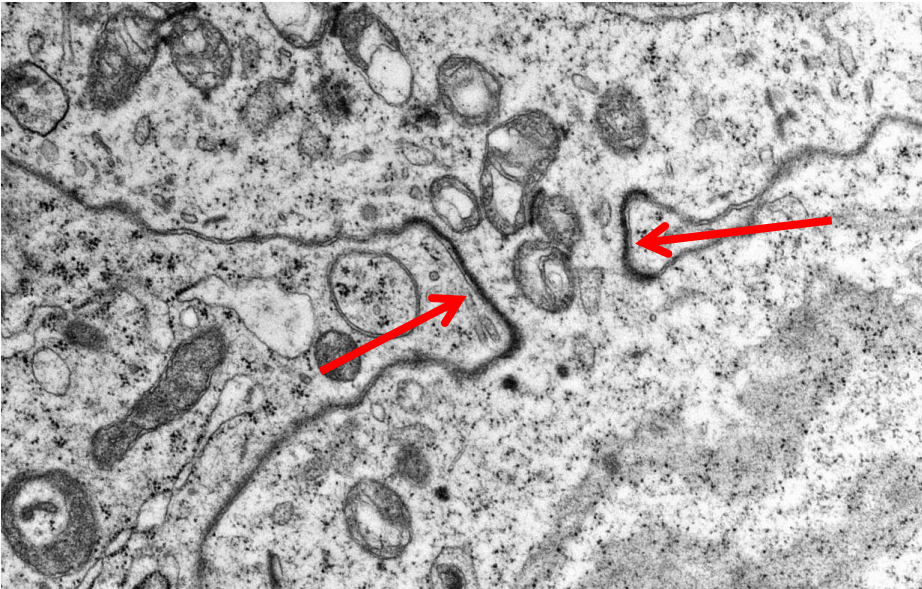
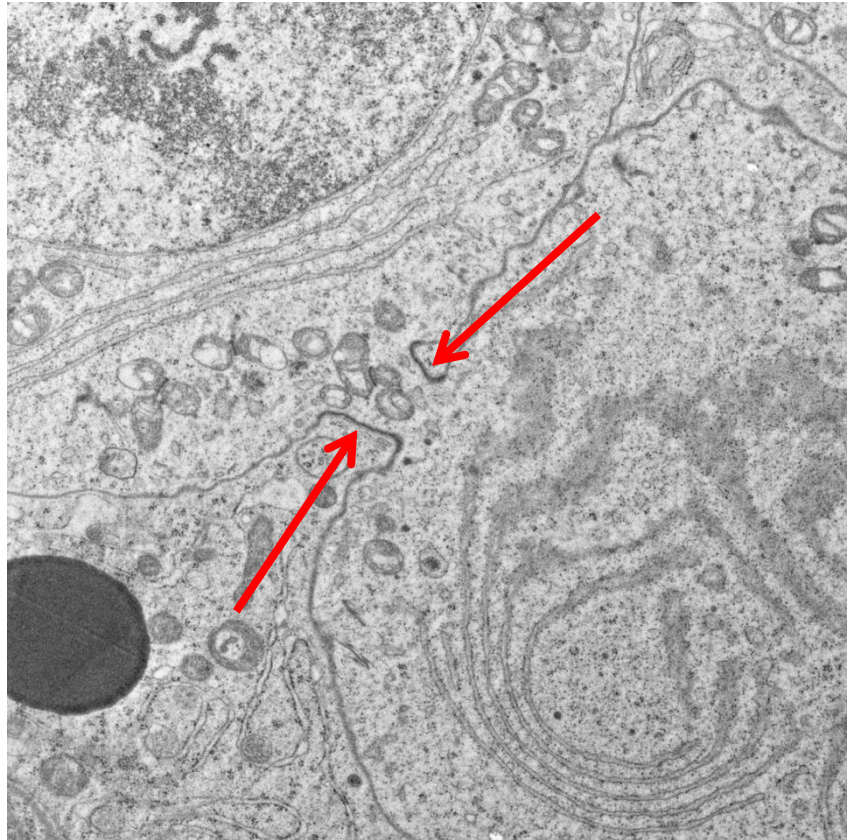
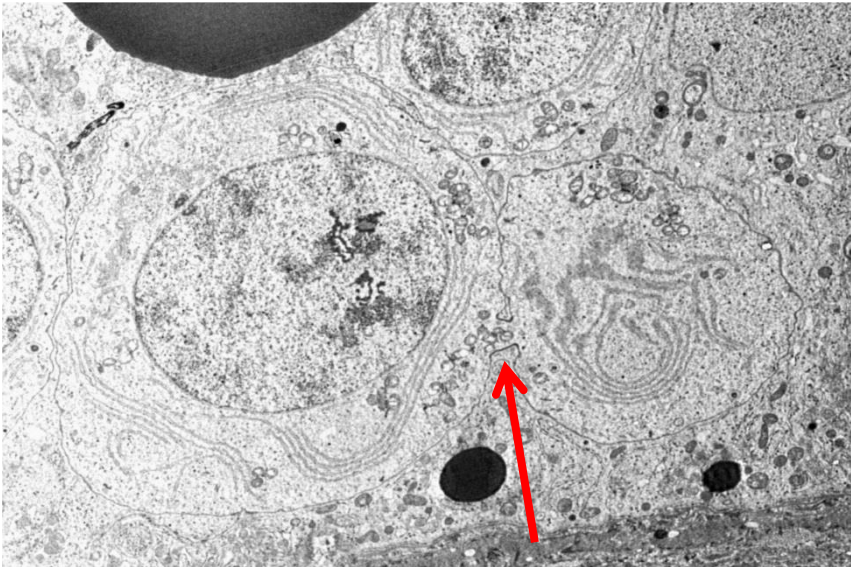
equatorial division - MeI 2

Spermatids

# Spermatogenesis - Spermatocytes



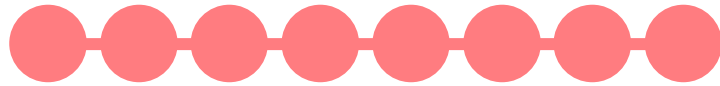
# Spermatogenesis - Cytoplasmic bridges



# Spermatogenesis - Spermiogenesis

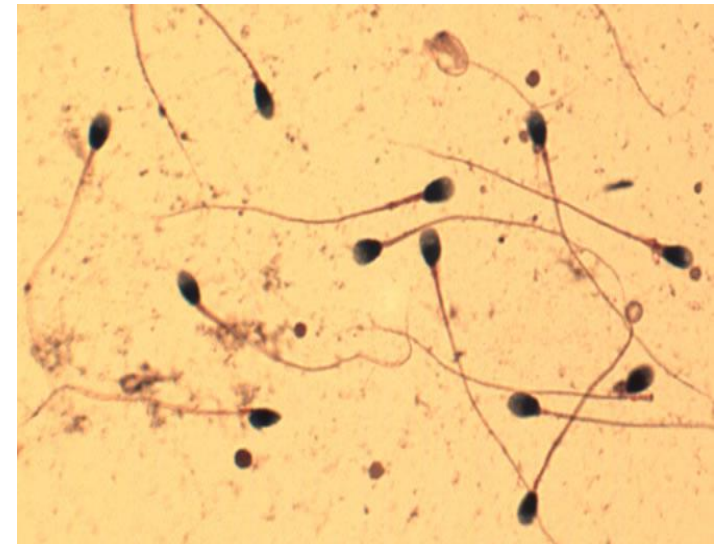
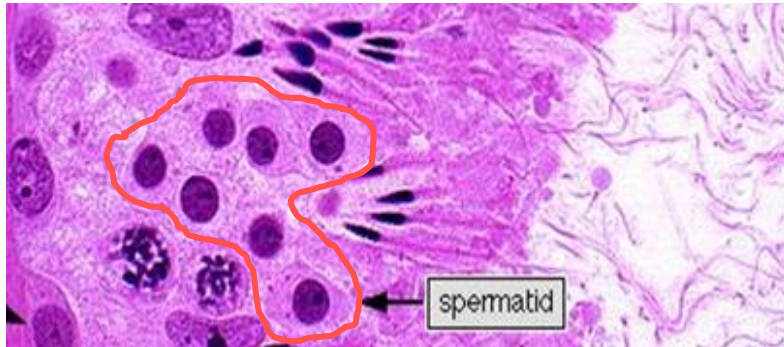
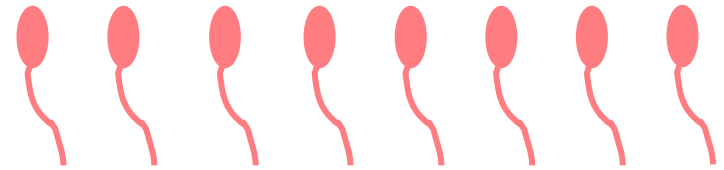
## Spermatides

- small germ cells (6-8  $\mu\text{m}$ )
- cytoplasmic bridges



morphogenesis

## Spermatozoa



## Key elements

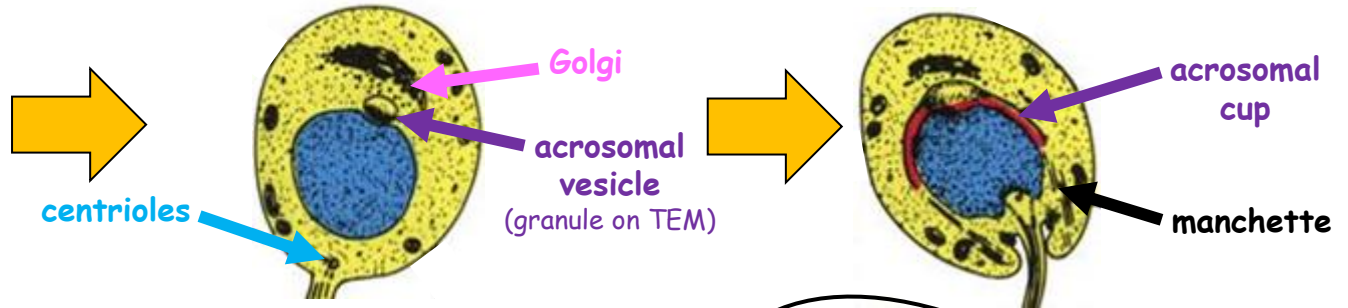
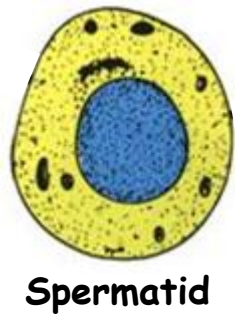
1. Formation of acrosome
2. Development of flagellum
3. Chromatin condensation + shaping the nucleus
4. Reduction of cytoplasm
5. Histones to protamines

# Spermatogenesis - Spermioogenesis

- Prominent Golgi complex
- Numerous mitochondria
- Pair of centrioles

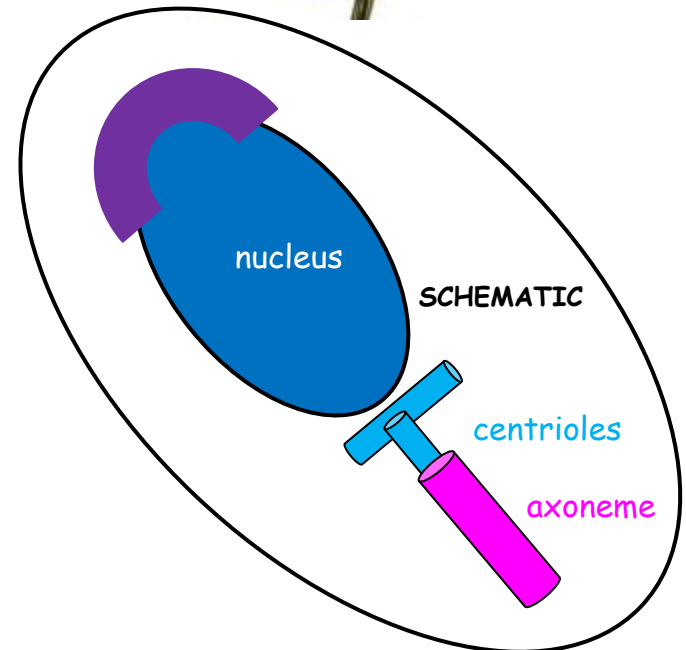
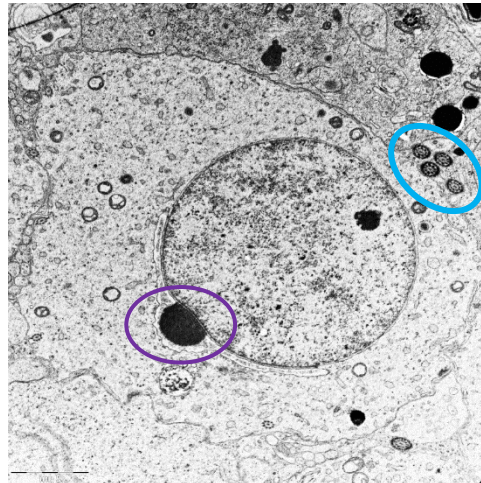
- Transgolgi pathway produces granules
- Granules form **acrosomal vesicle**

- Acrosomal vesicle flatten - **cup**
- Microtubules arrange into **manchette**
- Chromosomes begin to condensate

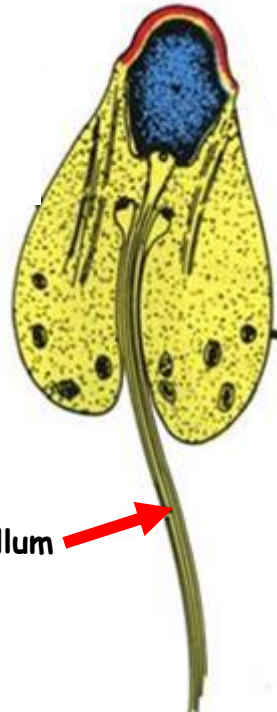
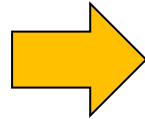
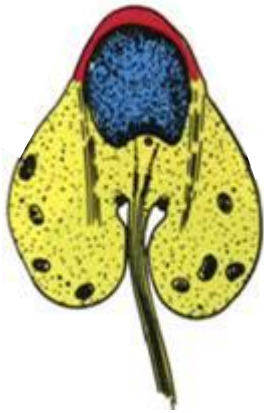


## Acrosomal enzymes

- hyaluronidase
- acrosin
- acid phosphatase
- neuraminidase



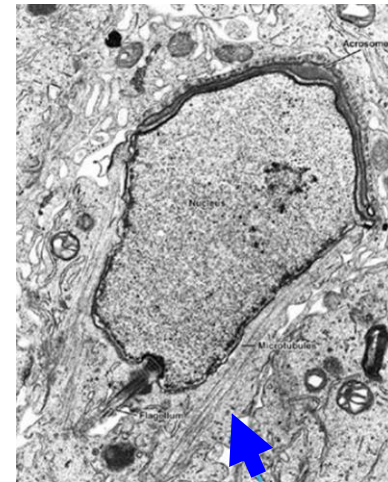
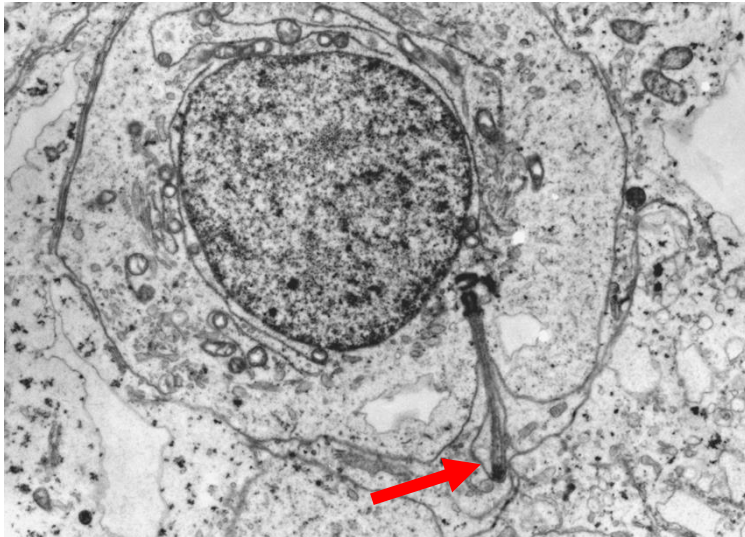
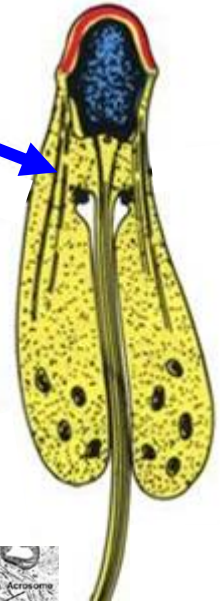
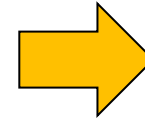
# Spermatogenesis - Spermio genesis



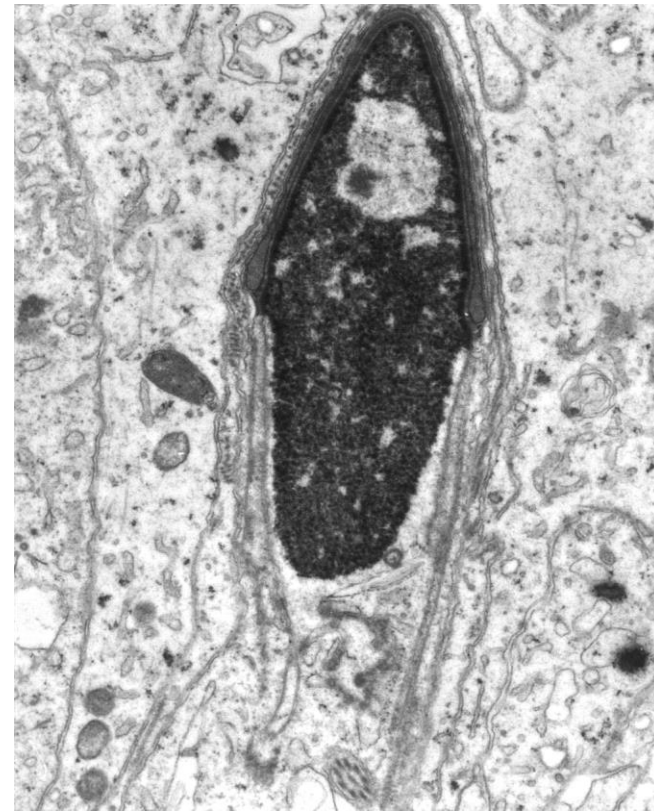
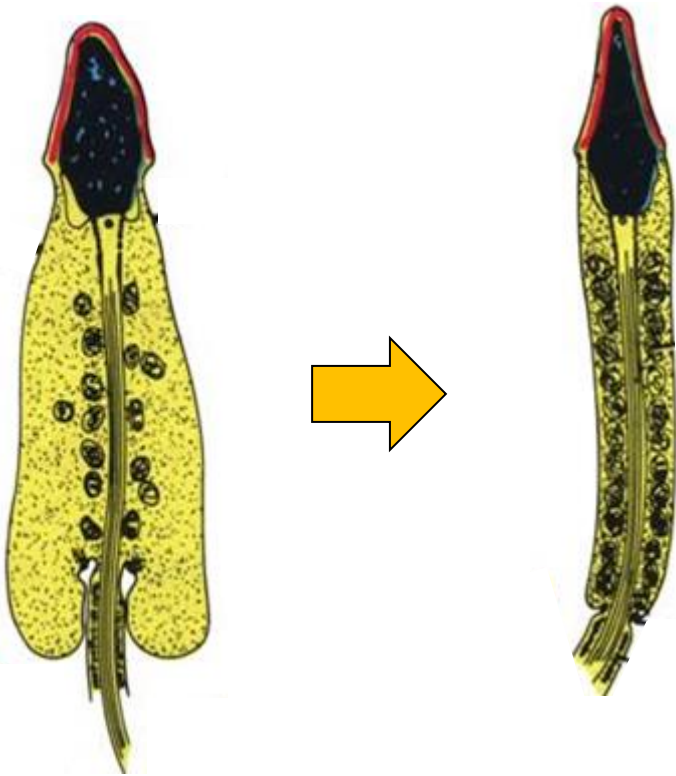
flagellum



manchette

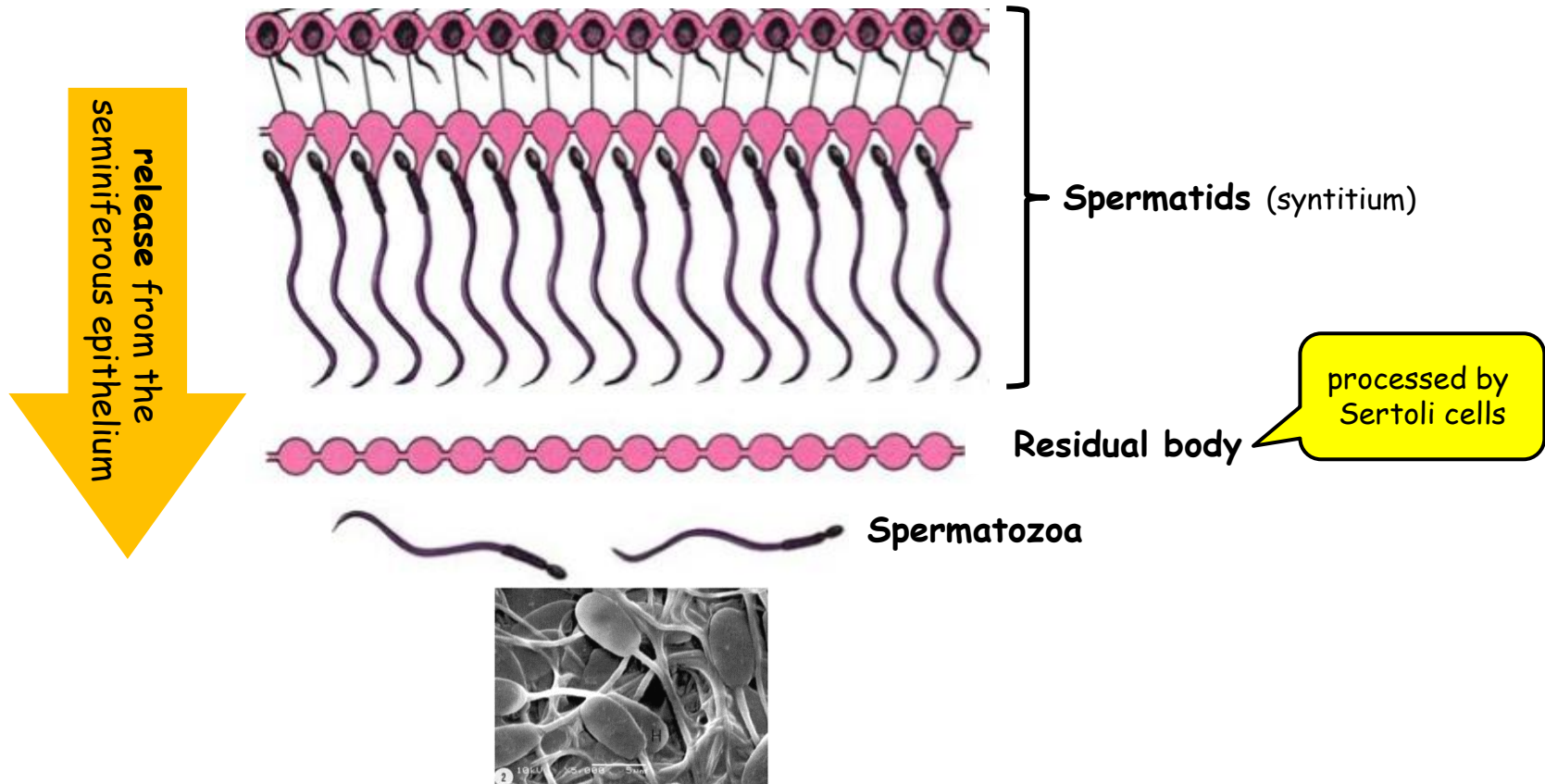


# Spermatogenesis - Spermogenesis



# Spermatogenesis - Spermiation

= final stage of spermiogenesis

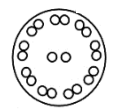
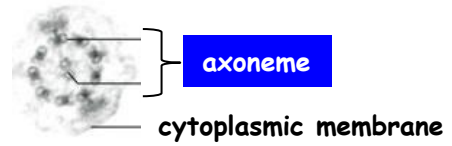
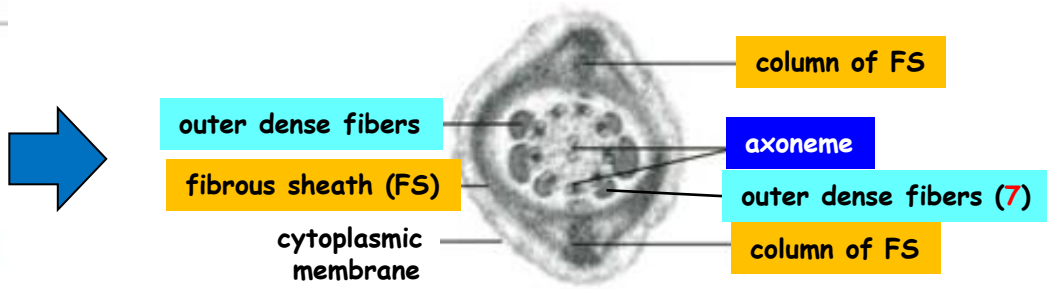
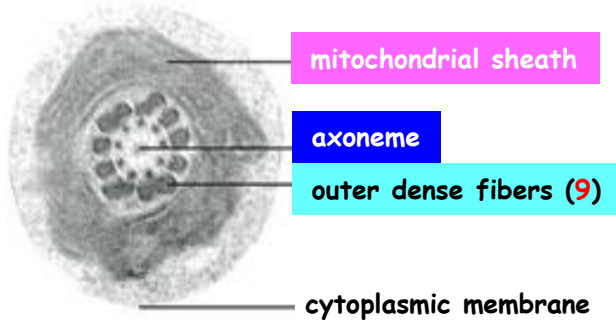
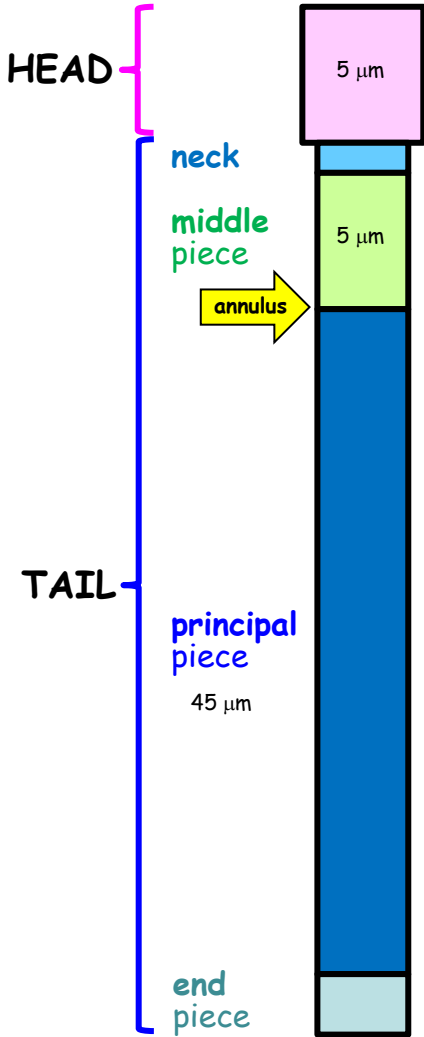




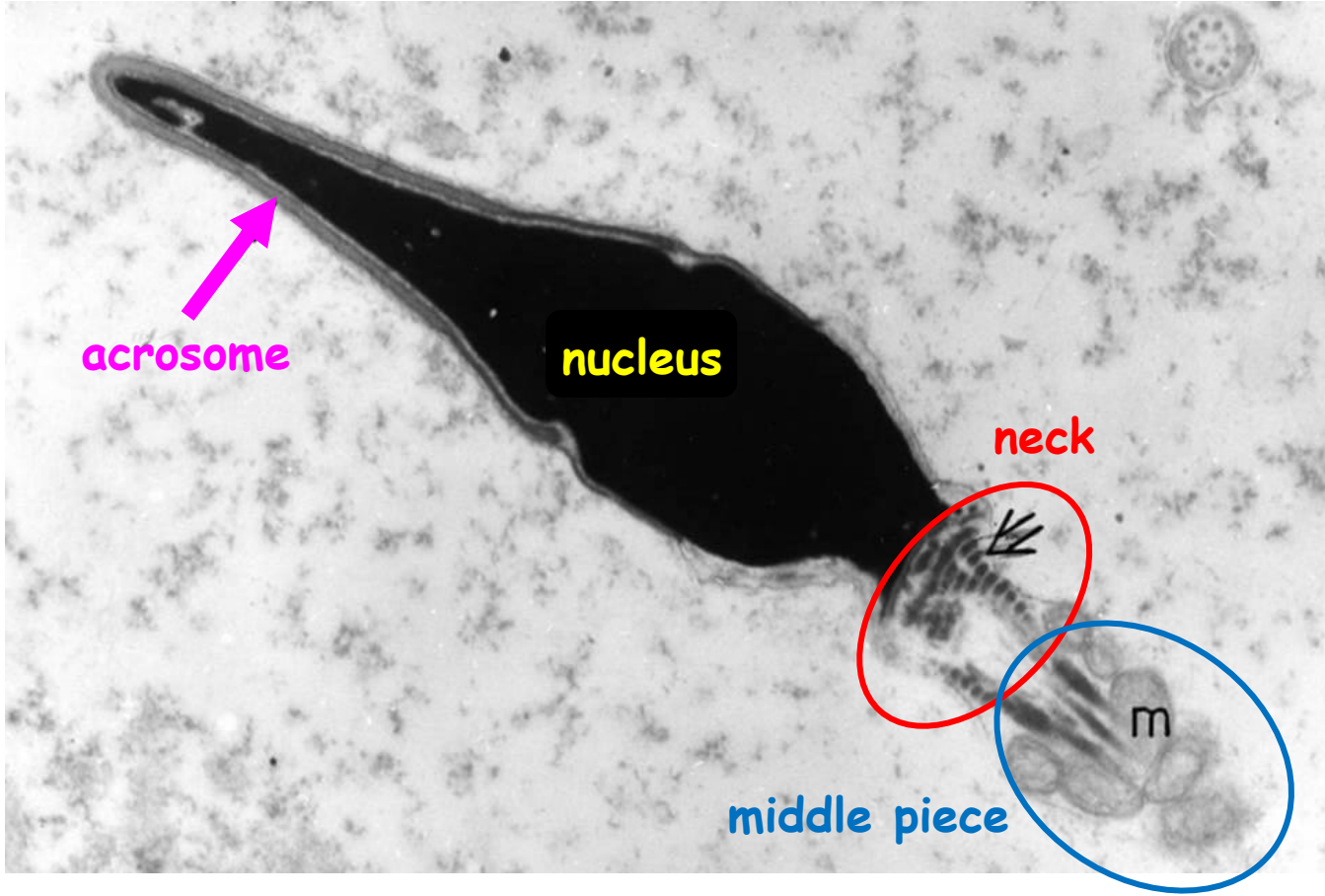
# Spermatozoon



Total length = 65  $\mu\text{m}$

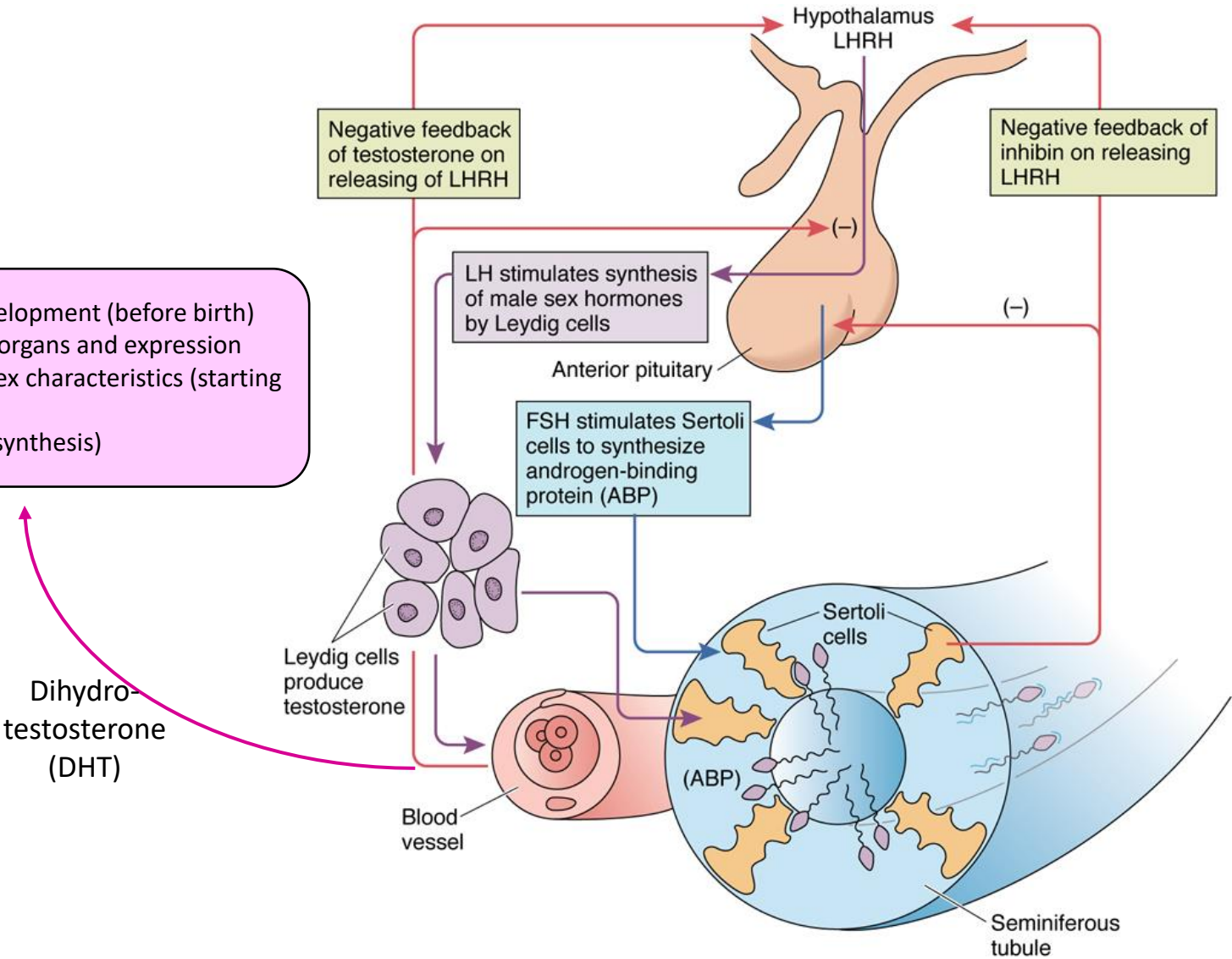


# Spermatozoon



# Spermatogenesis - Hormonal regulation

- Male pattern of development (before birth)
- Growth of male sex organs and expression of male secondary sex characteristics (starting at puberty)
- Anabolism (protein synthesis)



# Spermatozoa + Ejaculate

## Properties of spermatozoa

- life-span: 2 to 3 dys in female reproductive tract  
several weeks in epididymis
- fertilising ability: up to 2 days
- velocity: 3-5 mm/min.
- 2 types of spermatozoa: with X or Y chromosome

## Composition of ejaculate

### Corpuscular:

- spermatozoa (40-100 mil./1ml)
- desquamated epithelia
- residual bodies
- prostatic concretions

### Seminal plasma:

- secretions of seminal vesicles, prostate, bulbourethral, and Littré's glands
- testicular fluid
- secretions of epithelia of excretory ducts

# Spermatozoa + Ejaculate

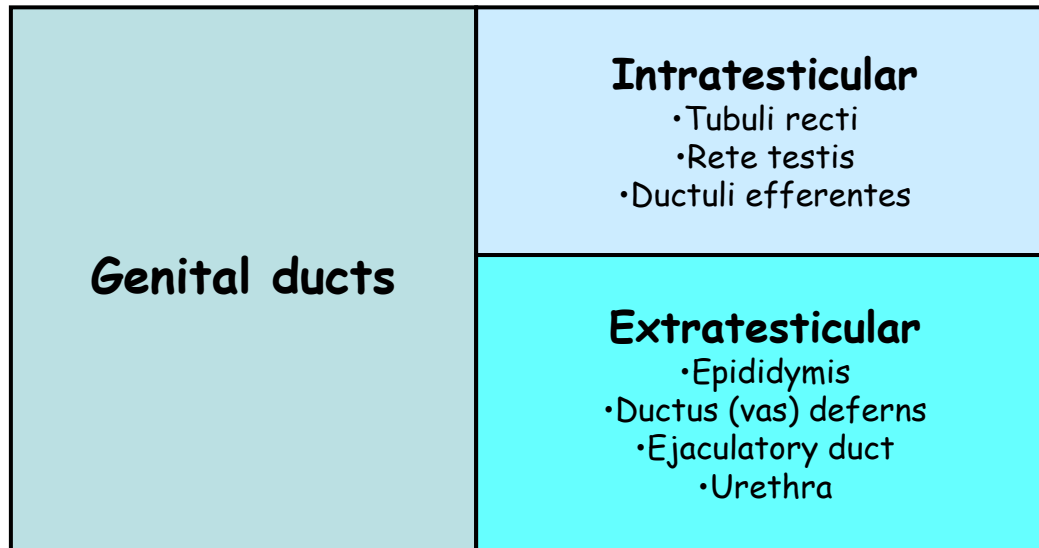
## Normozoospermia - WHO standard

- **volume** of ejaculate: 2,0 ml and more
- **pH** of ejaculate: 7,2-7,8
- **sperm concentration**: minimally 20 mil. spermatozoa/1ml, total at least 40 mil./ejaculate
- **movability**: min. 50 % movable with 25 % quickly and progressively moving
- **morphology**: min. 30 % normal spermatozoa
- **vital spermatozoa**: minimally 50 %

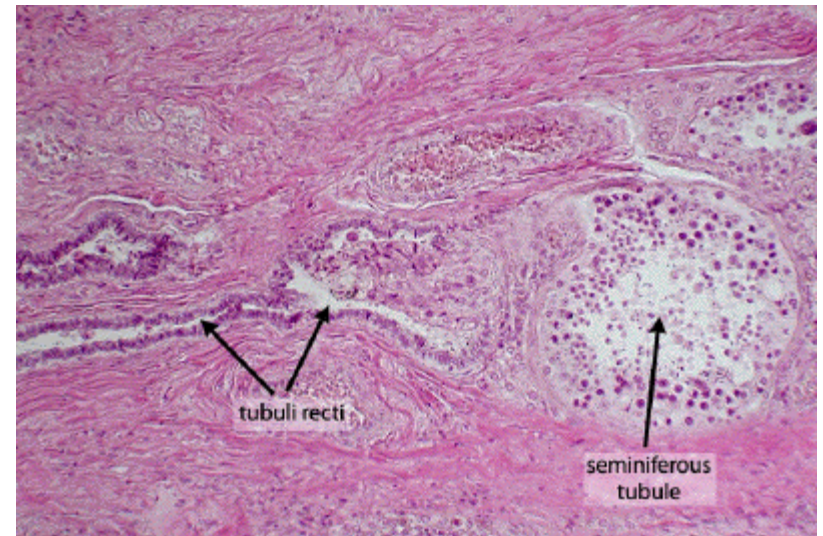
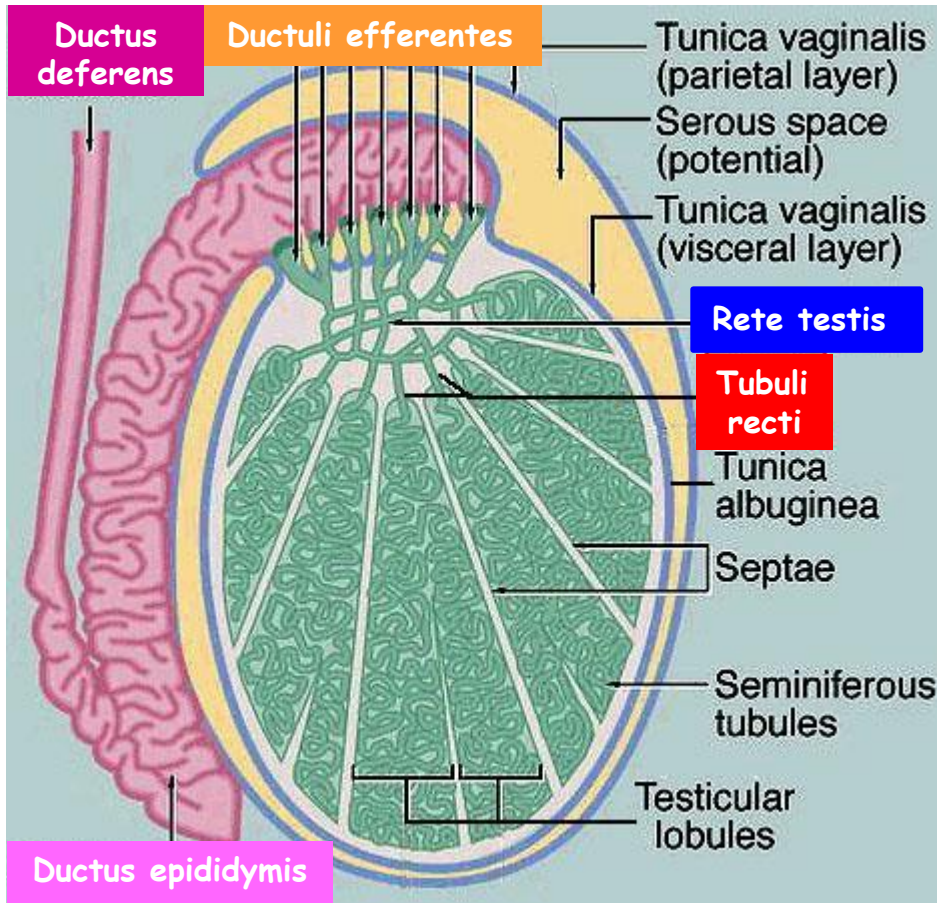
## Abnormal spermiogram - Nomenclature

- **Asthenozoospermia**: reduced sperm motility
- **Oligozoospermia**: reduced sperm concentration in ejaculate
- **Teratozoospermia**: large numbers of morphologically abnormal sperm
- **Oligoastenoteratospermia**: combined abnormality in numbers, motility, and morphology of sperm
- **Azoospermia**: complete absence of sperm in ejaculate
- **Necrozoospermia**: high percentage of dead sperm (norm = minimum 58%)
- **Pyospermia**: unusually high numbers of leucocytes in ejaculate (norm = max. 1 million)

# Male efferent passages = Genital ducts

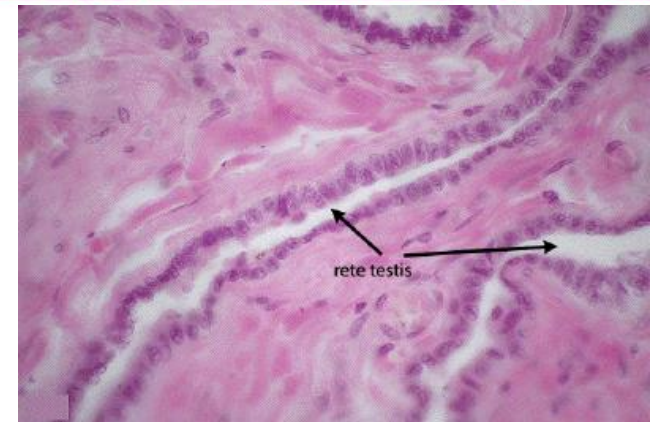
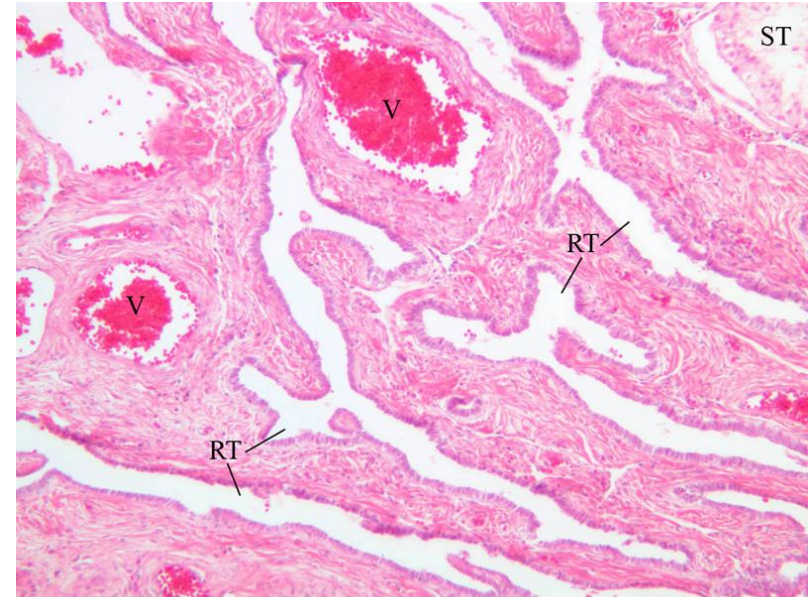
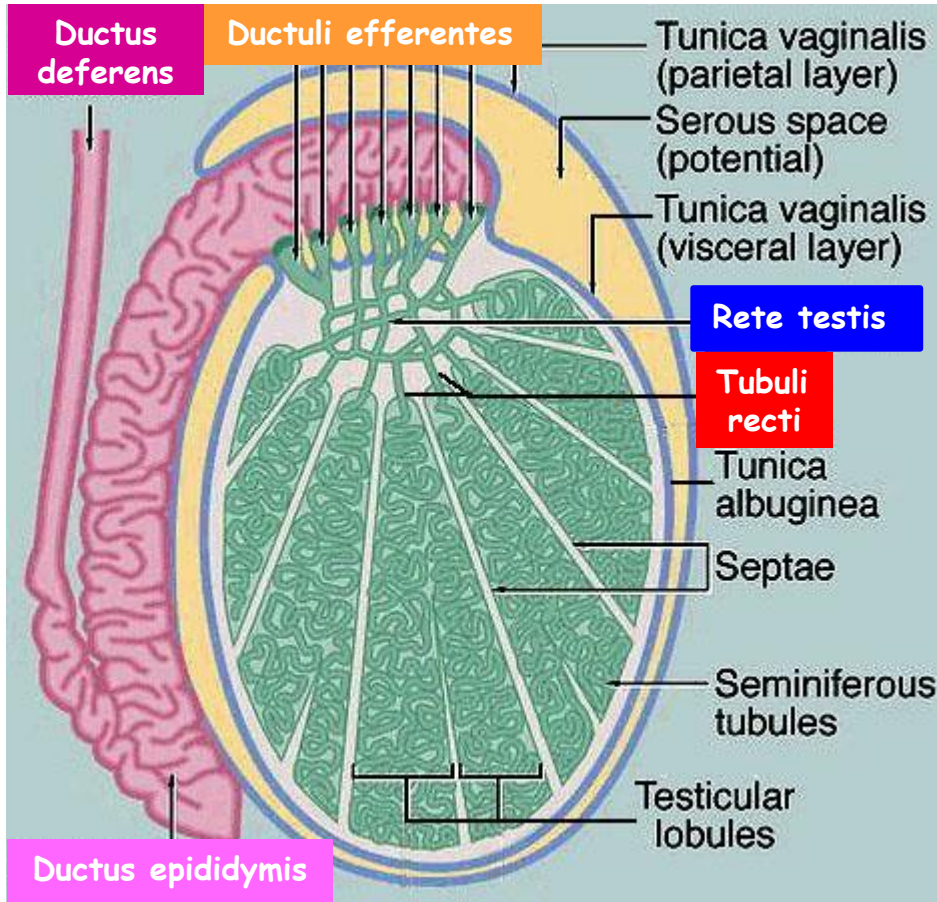


# Intartatesticular genital ducts - **Tubuli recti**



- short - about 1 mm
- in septula
- proximal part: Sertoli cells
- distal part: simple cuboidal epithelium  
(with microvili + cilium)

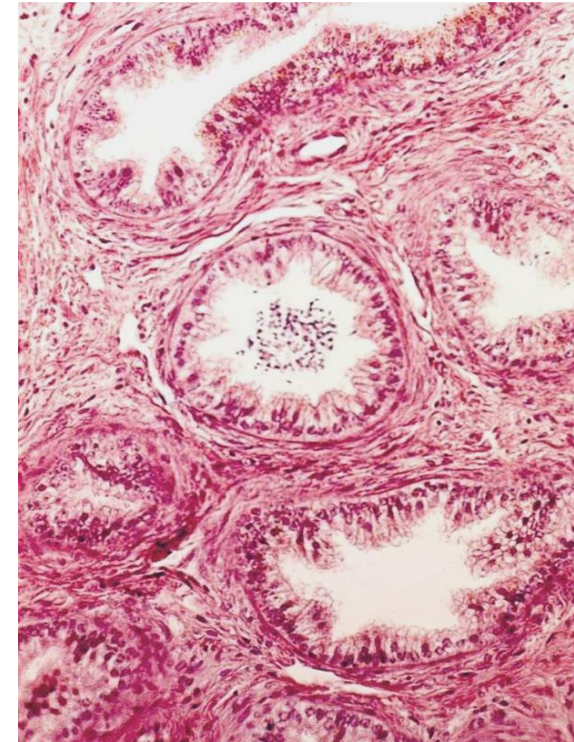
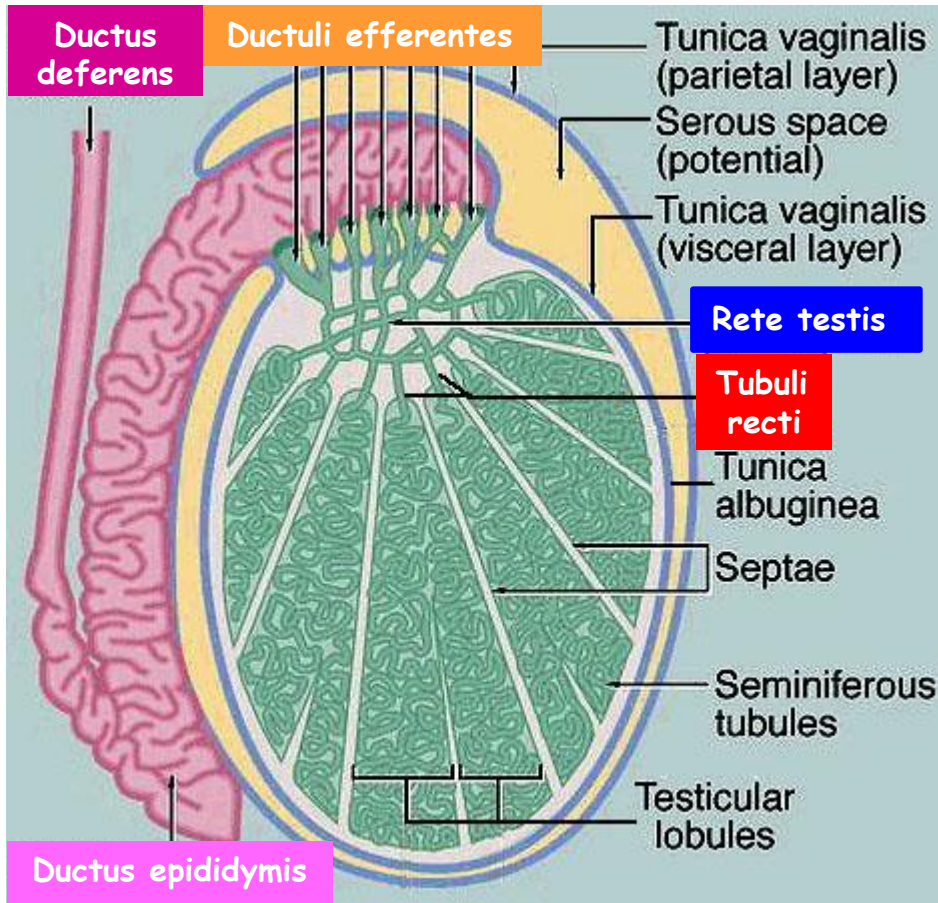
# Intartatesticular genital ducts - Rete testis



- labyrinth - interconnected channels
- in mediastinum
- simple cuboidal epithelium (as in Tubuli recti)  
(with microvili + cilium)

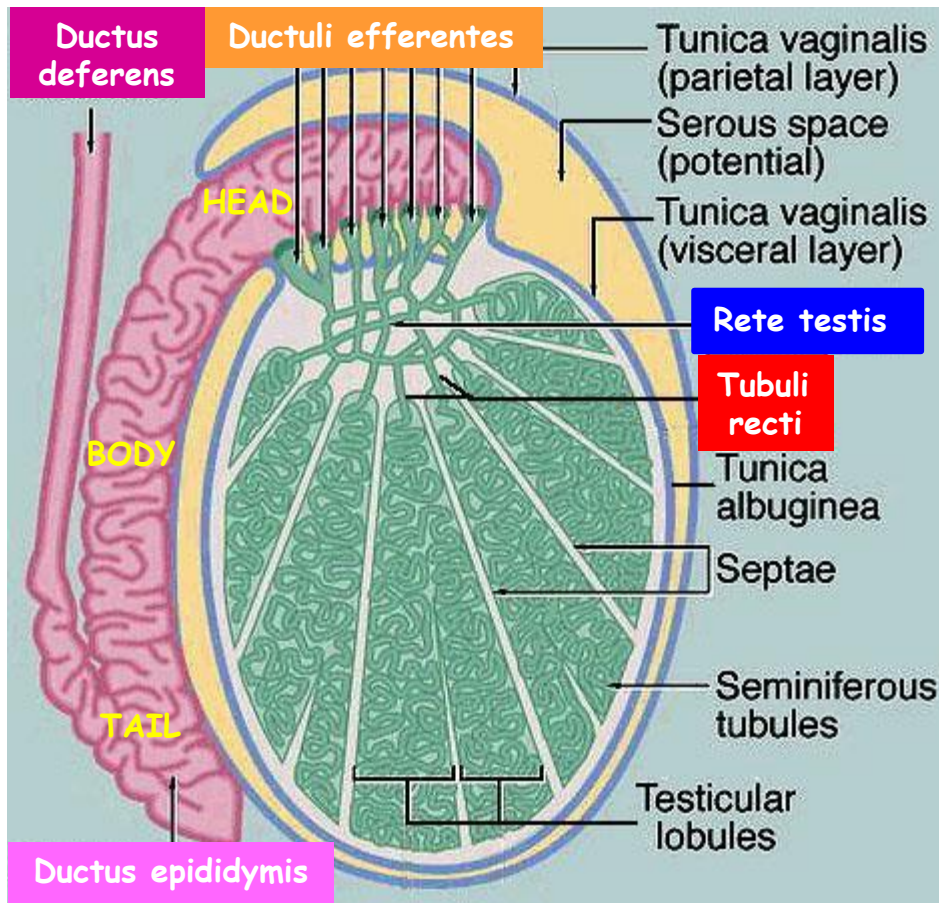


# Intartatesticular genital ducts - **Ductuli efferentes**



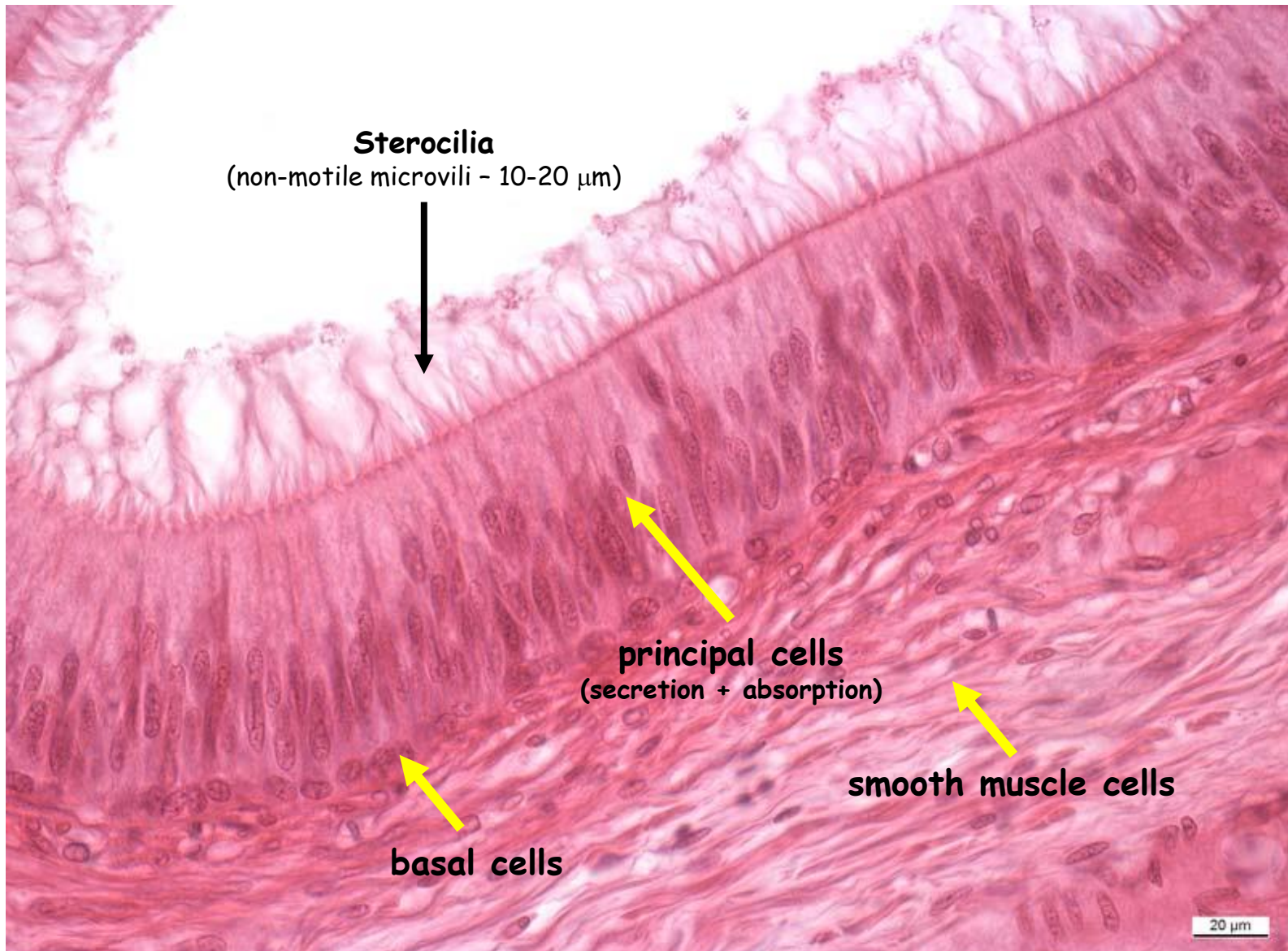
- 10 to 20
- penetrate tunica albuginea
- cuboidal + columnar cells (patches)
- **non-ciliated + ciliated** - sperm passage
- microvili + lysosomes - absorption of luminal fluid
- **smooth muscle cells** - passage of sperm

# Extratesticular genital ducts - Ductus epididymis 1

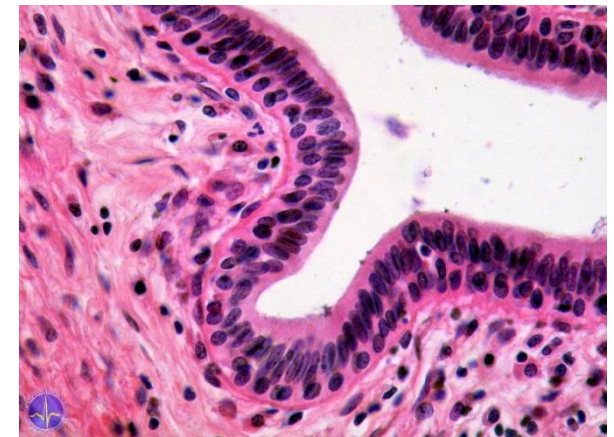
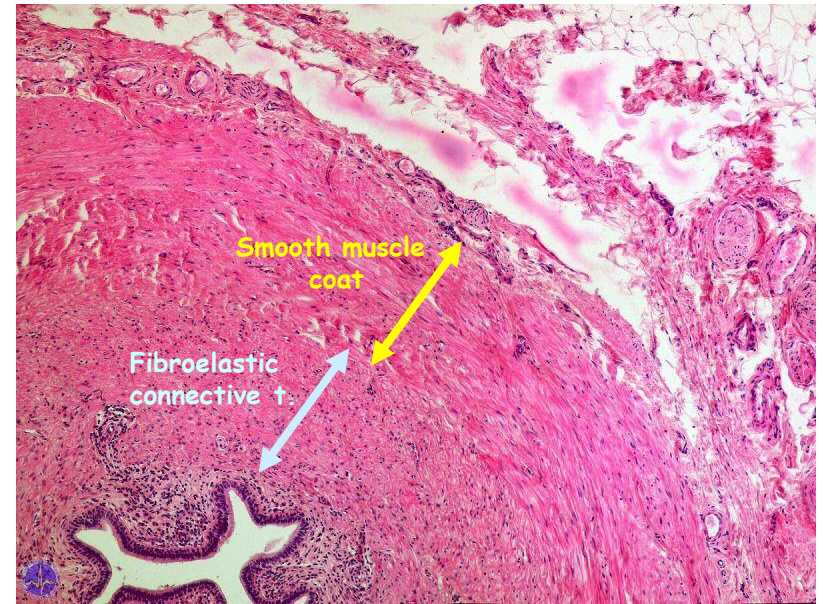
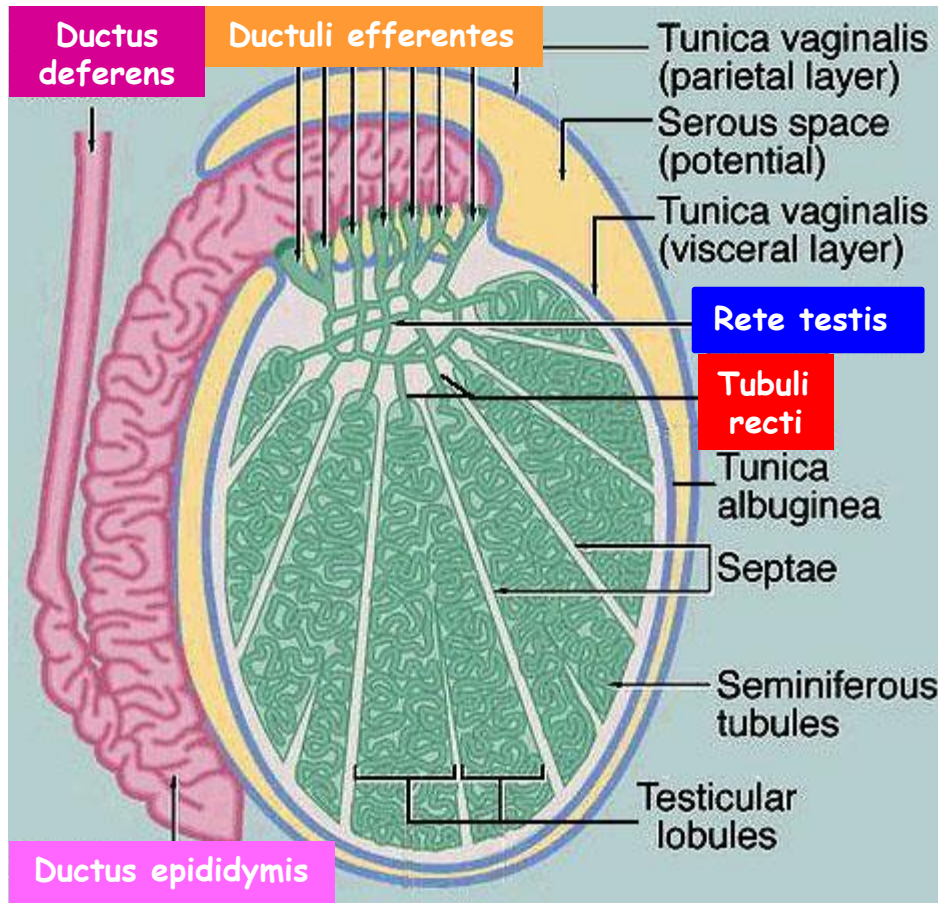


- about 5 meters long
- highly convoluted (head + body)
- tail (cauda) straight - sperm storage + maturation (under hormonal influence)
- columnar **pseudostratified** lining: **basal cells** (polyhedral) + **principal cells** (columnar)
- principal cells with **stereocilia**
- surrounded by circular **smooth muscle** layer (peristaltic motion)

# Extratesticular genital ducts - Ductus epididymis 2

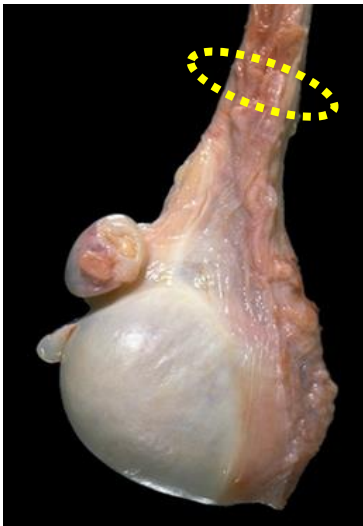


# Extratesticular genital ducts - Ductus deferens 1

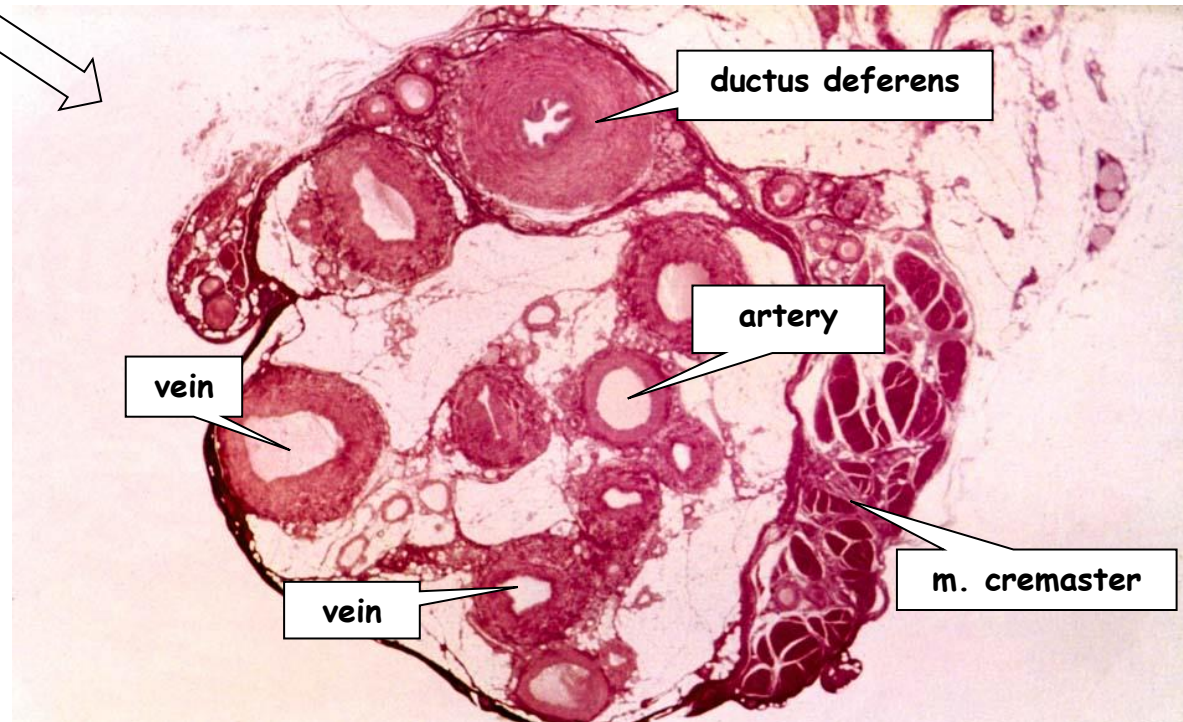


- thick walled + folded lumen
- epithelia similar to D. epididymis - columnar **pseudostratified** (basal cells + principal cells)
- surrounded by three layers of **smooth muscle** layer (circ+long+long)
- sympathetic innervation - initiate ejaculation

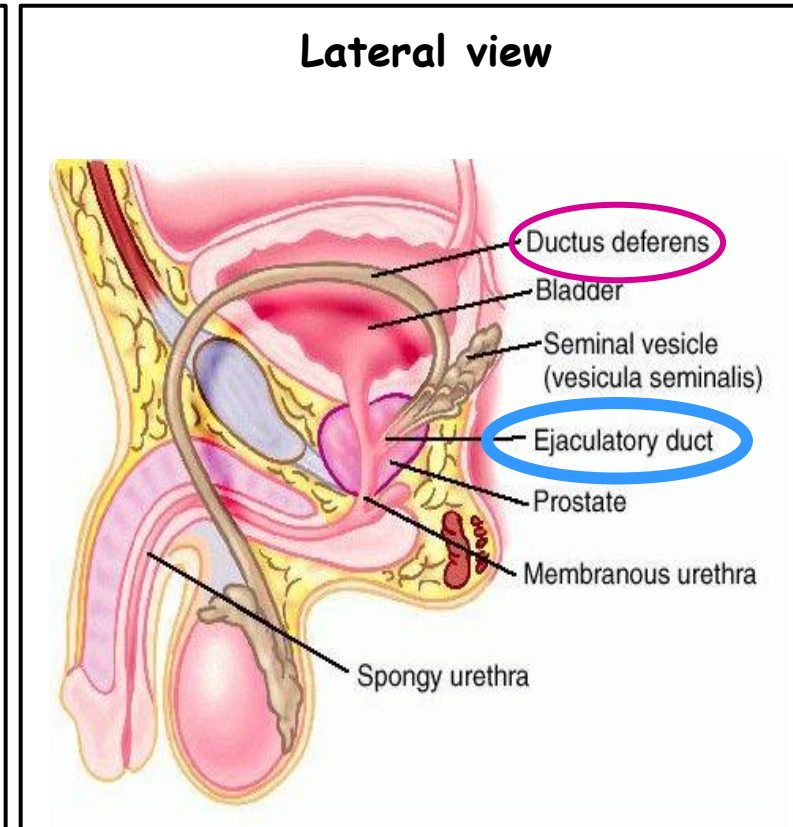
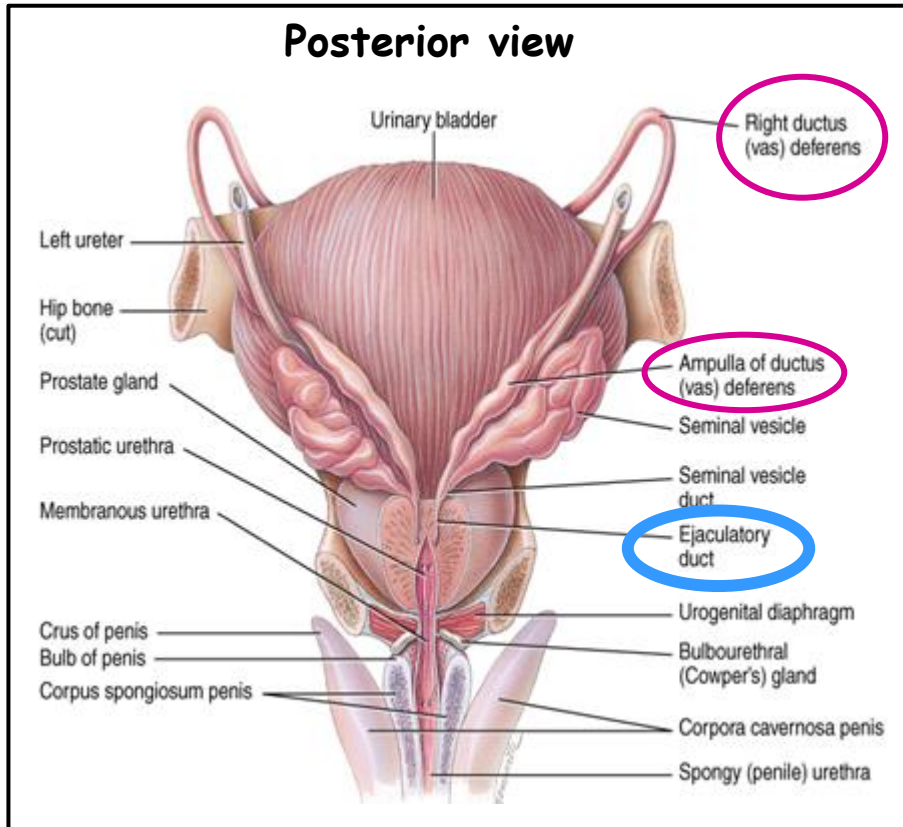
# Extratesticular genital ducts - Ductus deferens 2



**Funiculus spermaticus**  
(Spermatic cord)

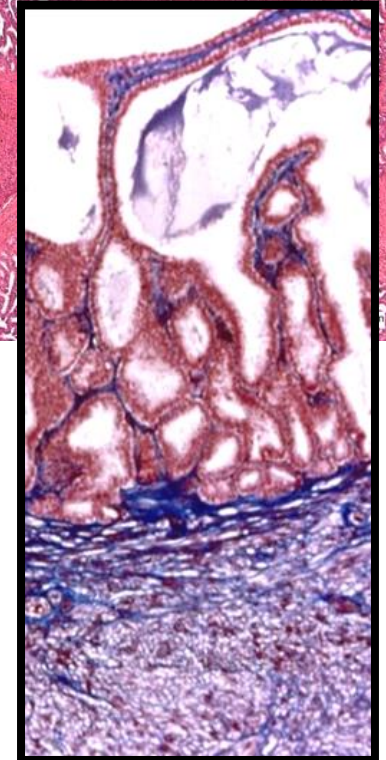
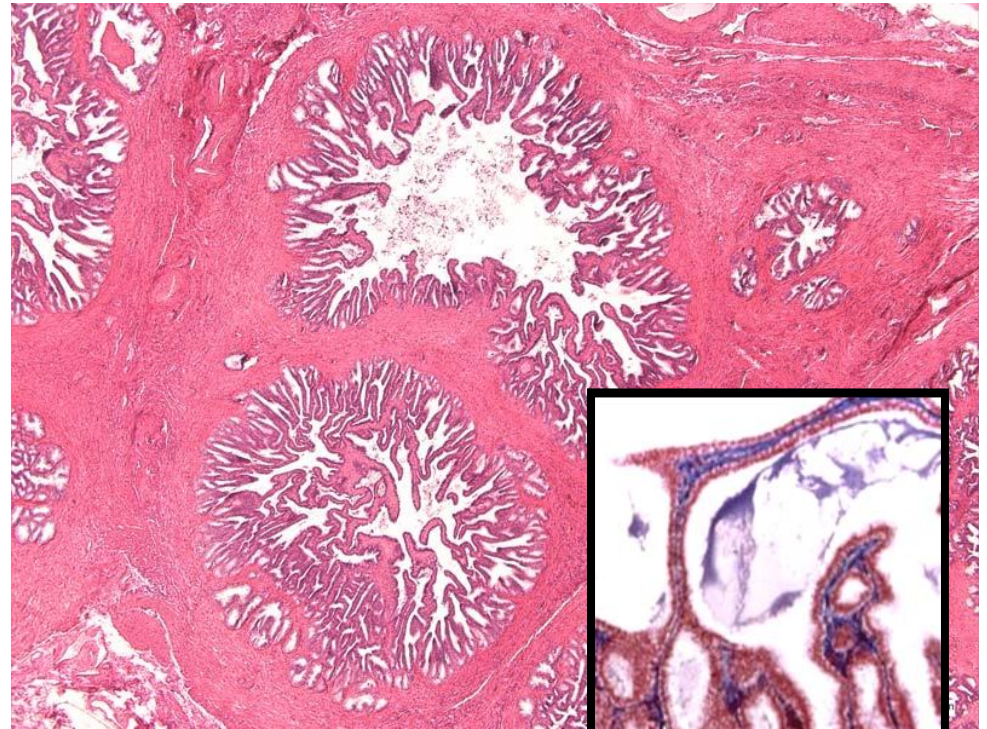
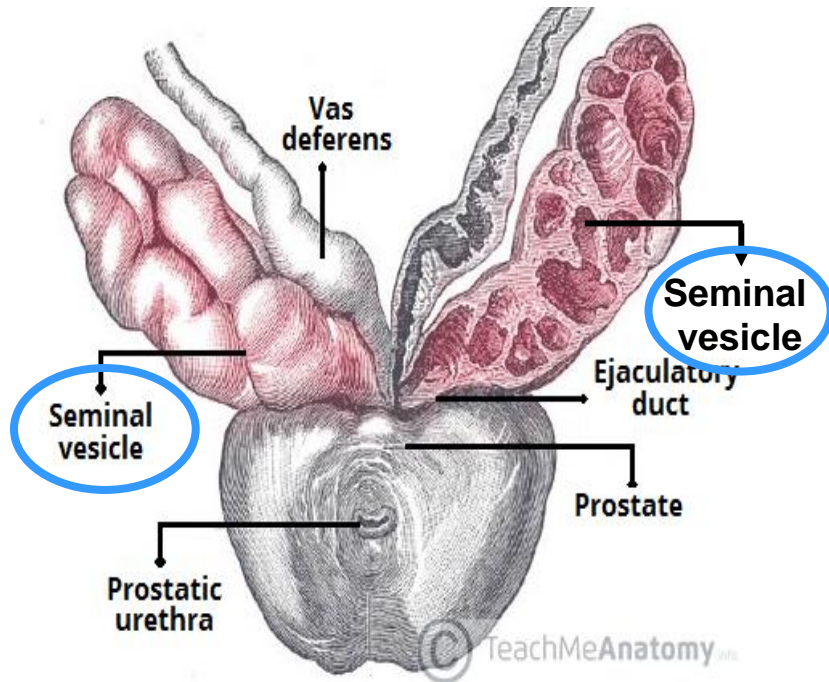


# Extratesticular genital ducts - Ejaculatory duct



- short + straight
- portion after entry of seminal vesicle duct
- surrounded by prostate
- enters urethra at the **colliculus seminalis** (verumontanum)
- lined with **simple columnar epithelium**
- **NO smooth muscle laeyer**

# Accessory genital glands - Seminal vesicles



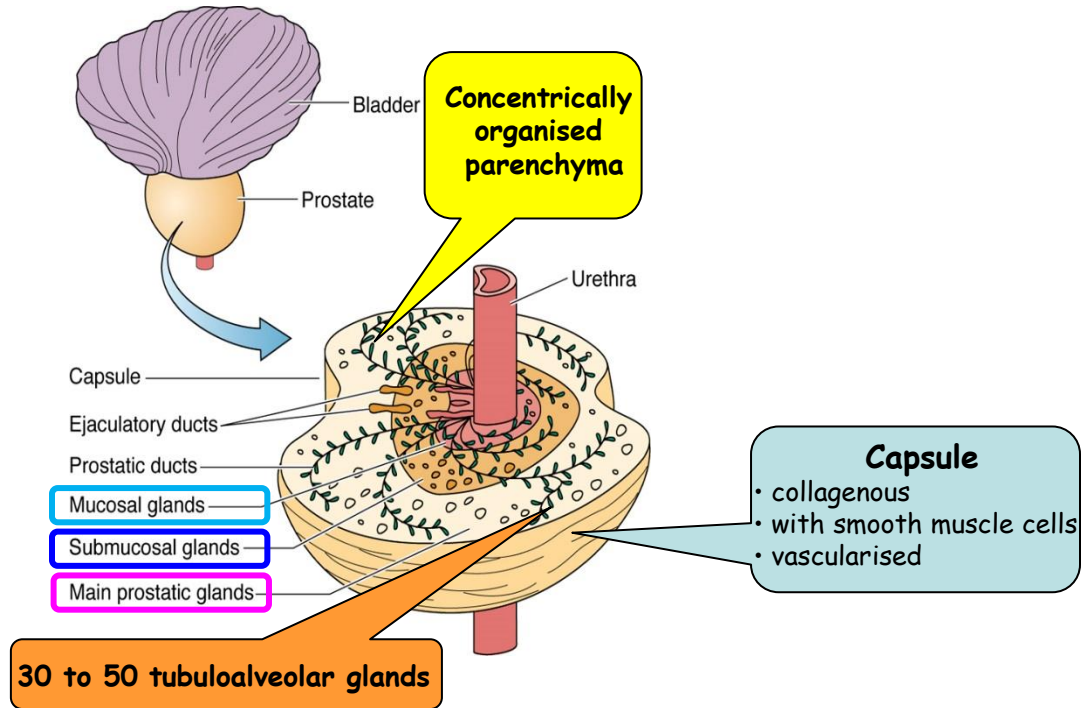
- develops from ductus deferens
- about 15 cm long snaking tube (about 5 cm external length)
- highly folded mucosa - labyrinthous cul-de-sac with openings to lumen
- **pseudostratified epithelium** - **basal** + **principal** cells (with microvilli+ cilium)
- **fibroelastic submucosa** + **smooth muscle layer**
- **seminal fluid** - constitutes about 70% of ejaculate (rich for **fructose**)

# Accessory genital glands - Prostate gland 1

**Mucosal (5%)**  
 • closest to the urethra  
 = shortest

**Submucosal (25%)**  
 • larger than mucosal

**Main (70%)**  
 • largest  
 • most abundant



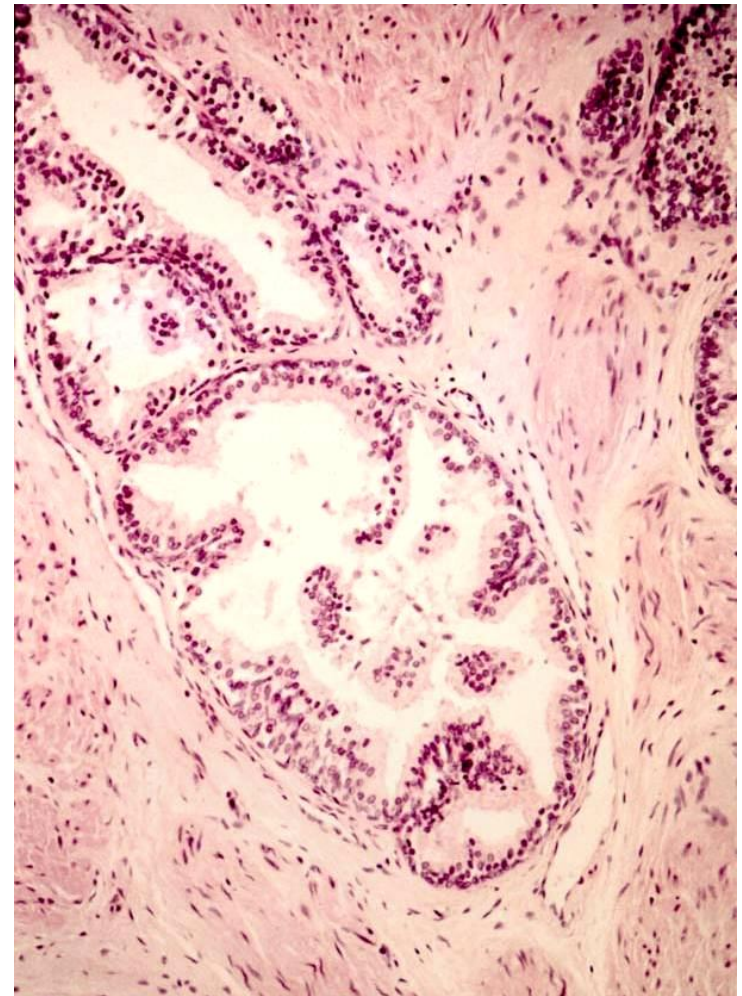
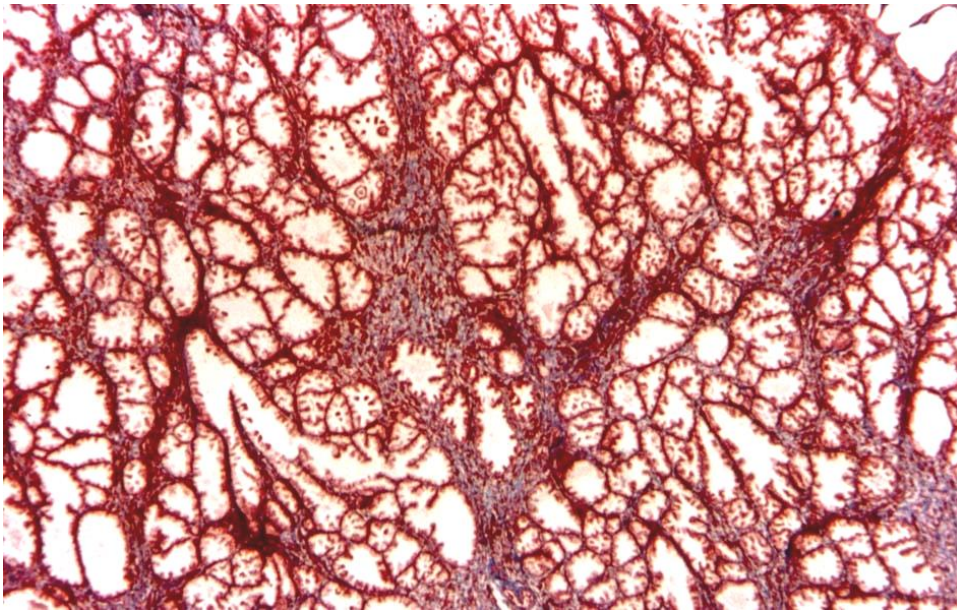
## GLANDS

- simple **pseudostratified columnar** epithelium
- abundant RER + Golgi + secretory granules

- size and shape of **chestnut** (the largest accessory gland)
- **stroma** (derives from the capsule): fibroelastic elements, many **smooth muscle cells**
- **prostatic secretion**: lipids, acid phosphatase, proteolytic enzymes, citric acid, fibrinolysin - **PSA** (liquifies semen)



# Accessory genital glands - Prostate gland 2

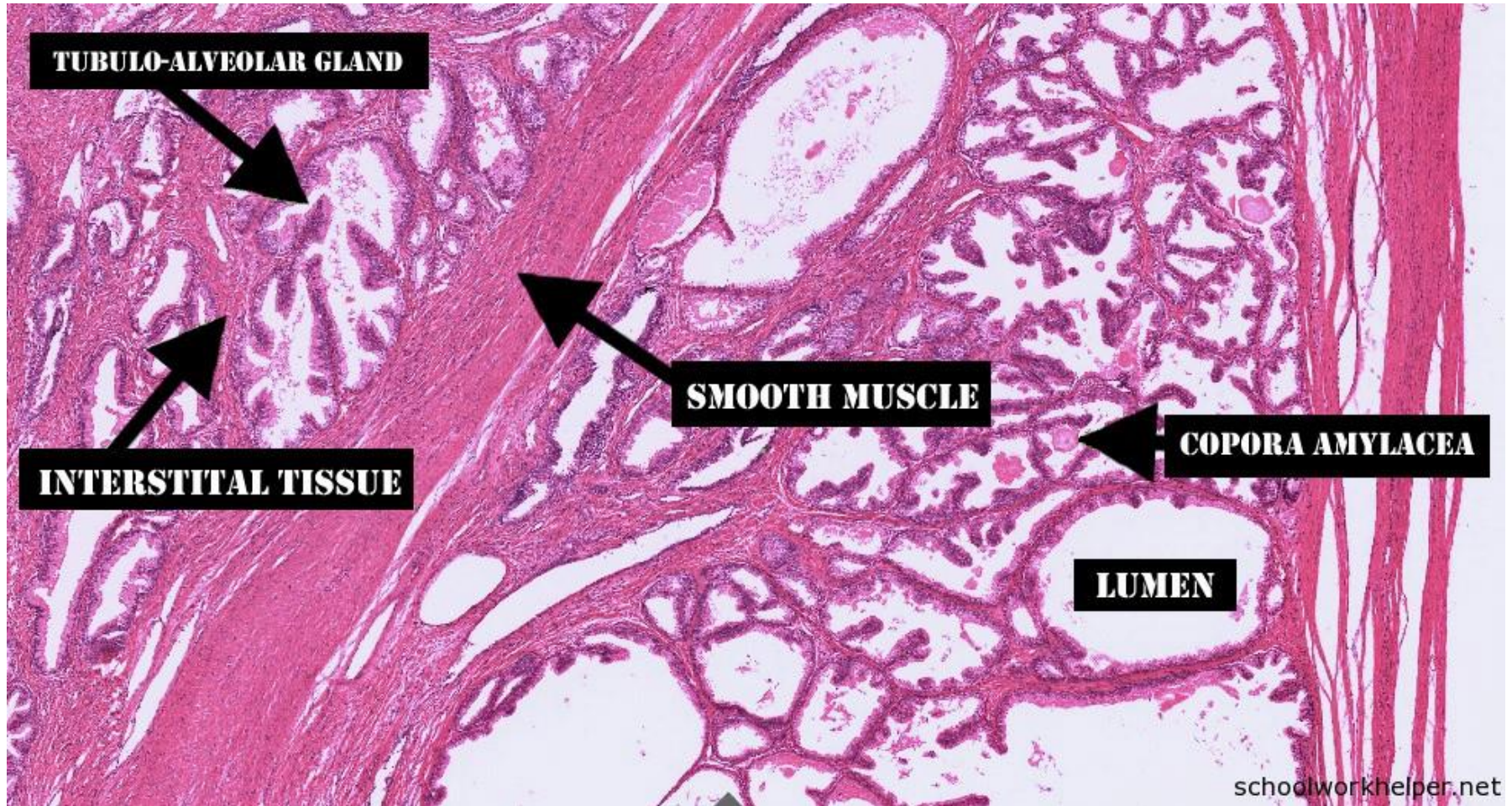


**Corpora amylacea**  
= prostate concretions

- increase with age
- may calcify
- size even 1 mm

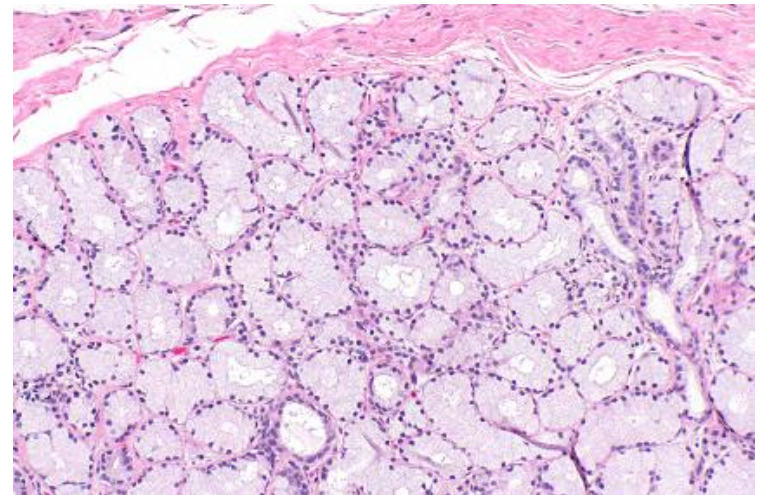
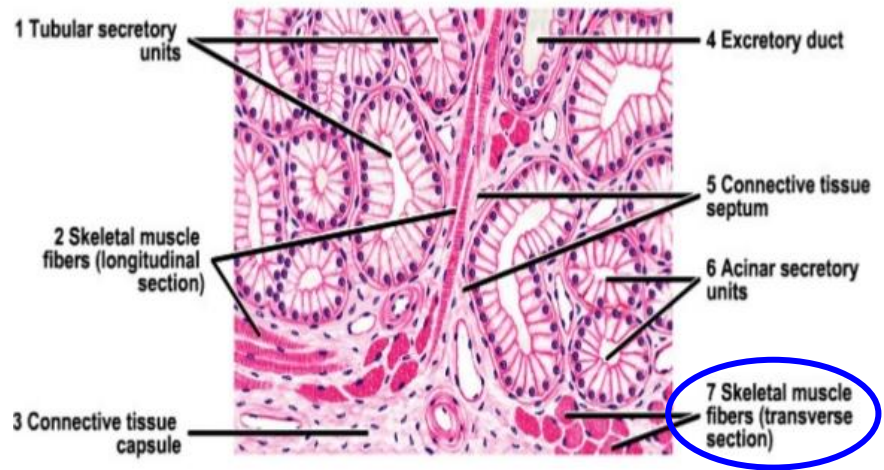
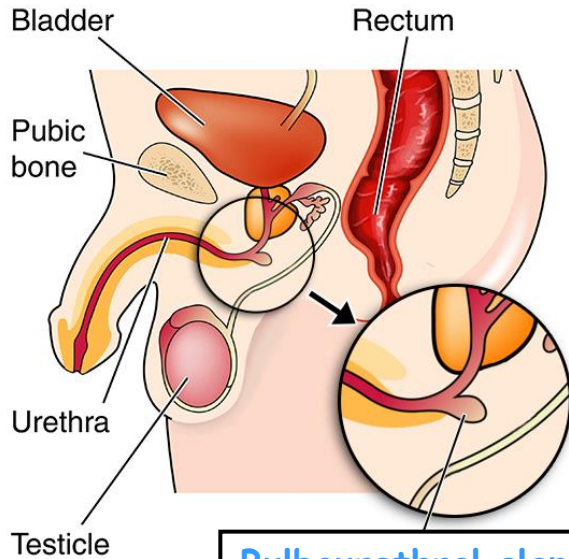


## Accessory genital glands - Prostate gland 3

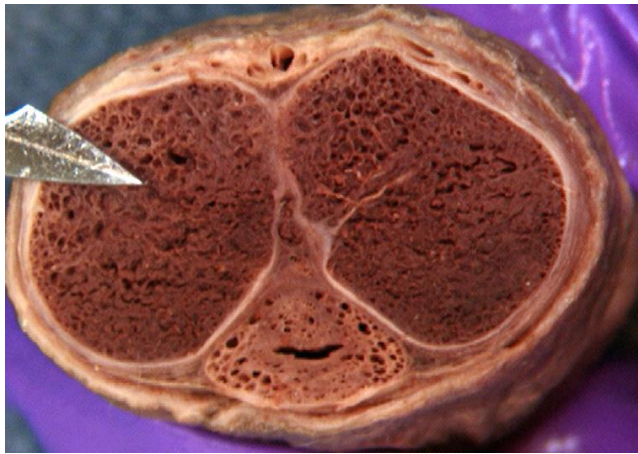


# Accessory genital glands - **Bulbourethral glands**

## Lateral view



- small - 3 to 5 mm
- at the root of the penis
- **lobular** structure (septa)
- **tubuloalveolar**
- **skeletal muscle fibers** (derived from urogenital diaphragm)
- **simple cuboidal** epithelium
- lubricating fluid (sialic acid + galactose)



# Penis - 1

Superficial dorsal vein  
Deep dorsal vein  
Dorsal artery  
Dorsal nerve  
Deep artery

Tunica albuginea  
Septum (discontinuus)

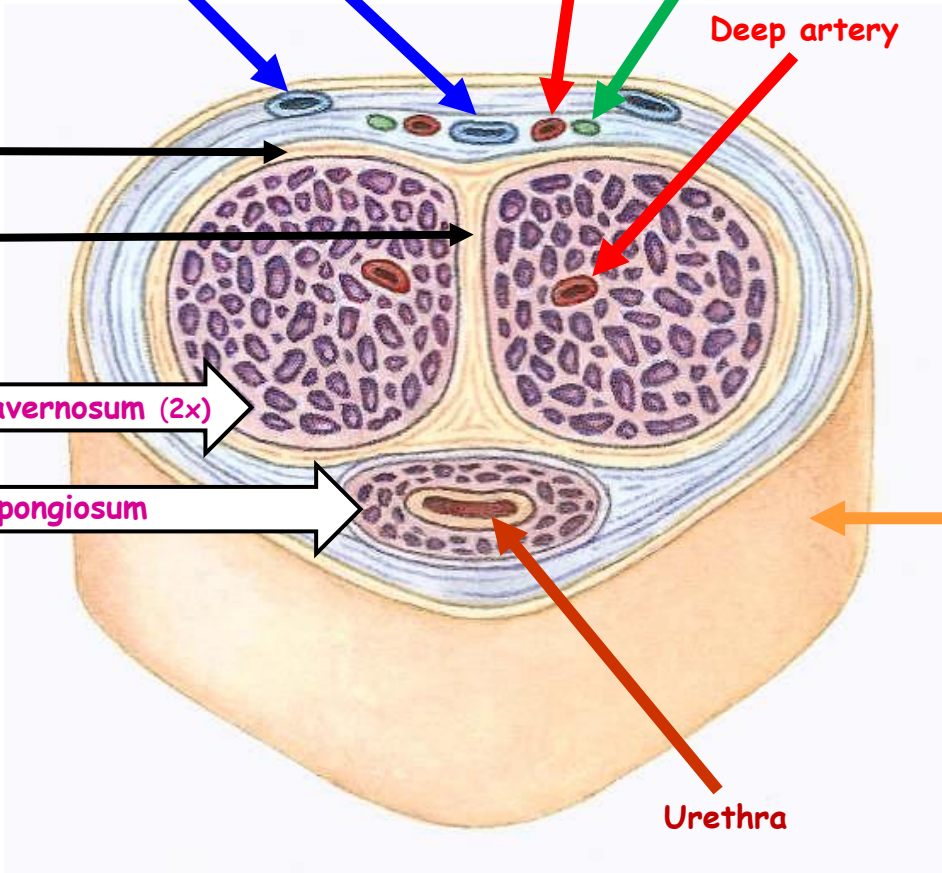
## ERECTION

Erectile tissue

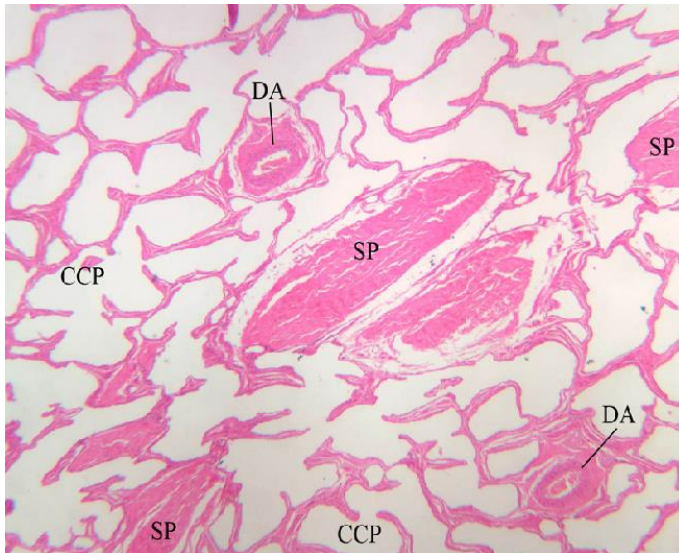
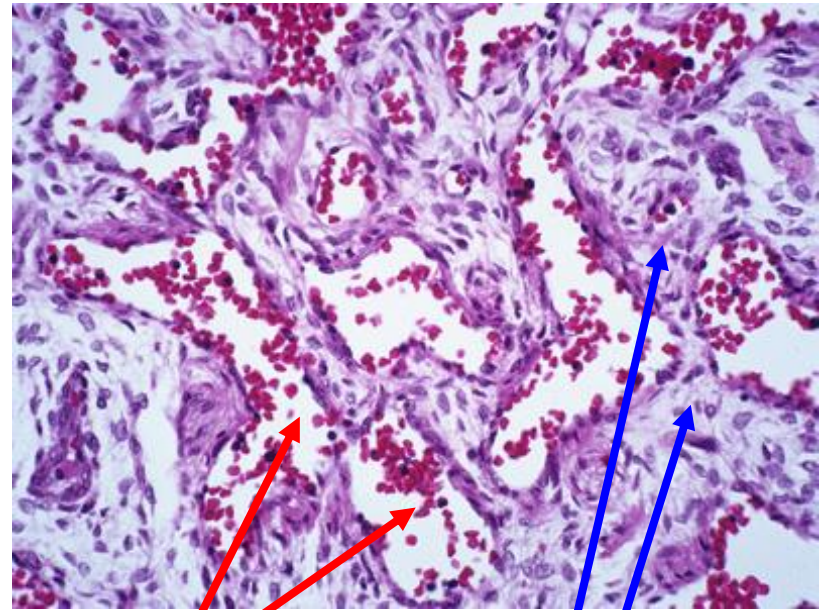
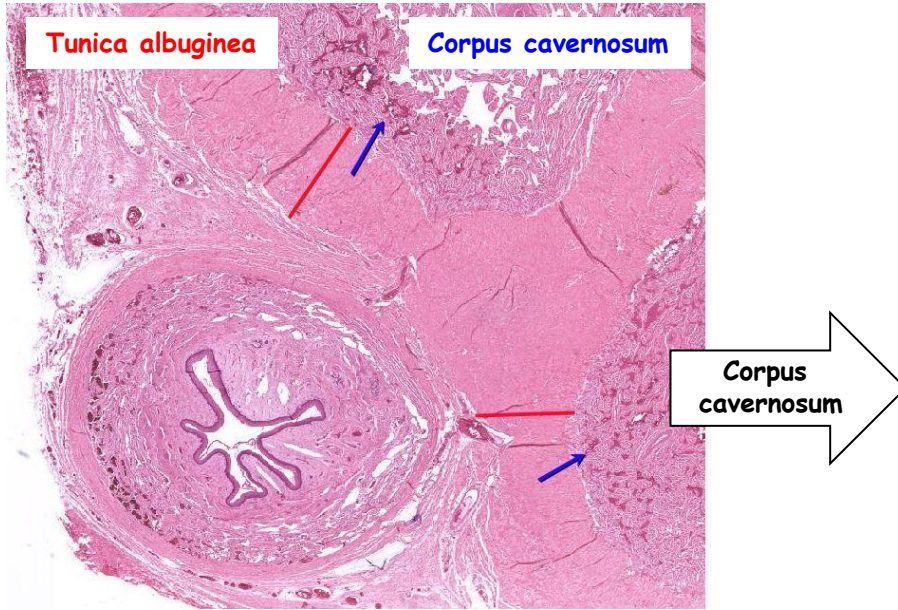
Corpus cavernosum (2x)  
Corpus spongiosum

Skin

Urethra



# Penis - 2



**Capillary plexuses + Helical arteries**

**Deep arteries + Dorsal arteries**



**Thank you for your attention !**

Questions and comments at:  
[ahampl@med.muni.cz](mailto:ahampl@med.muni.cz)