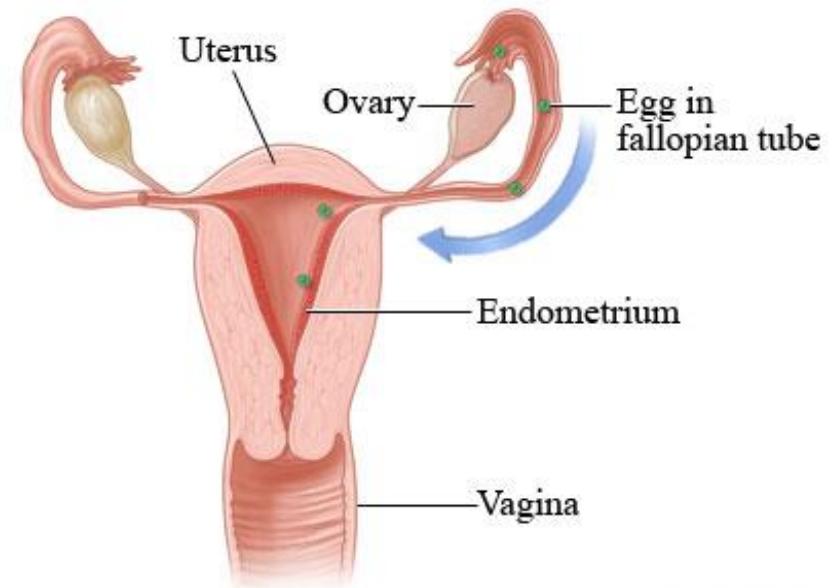


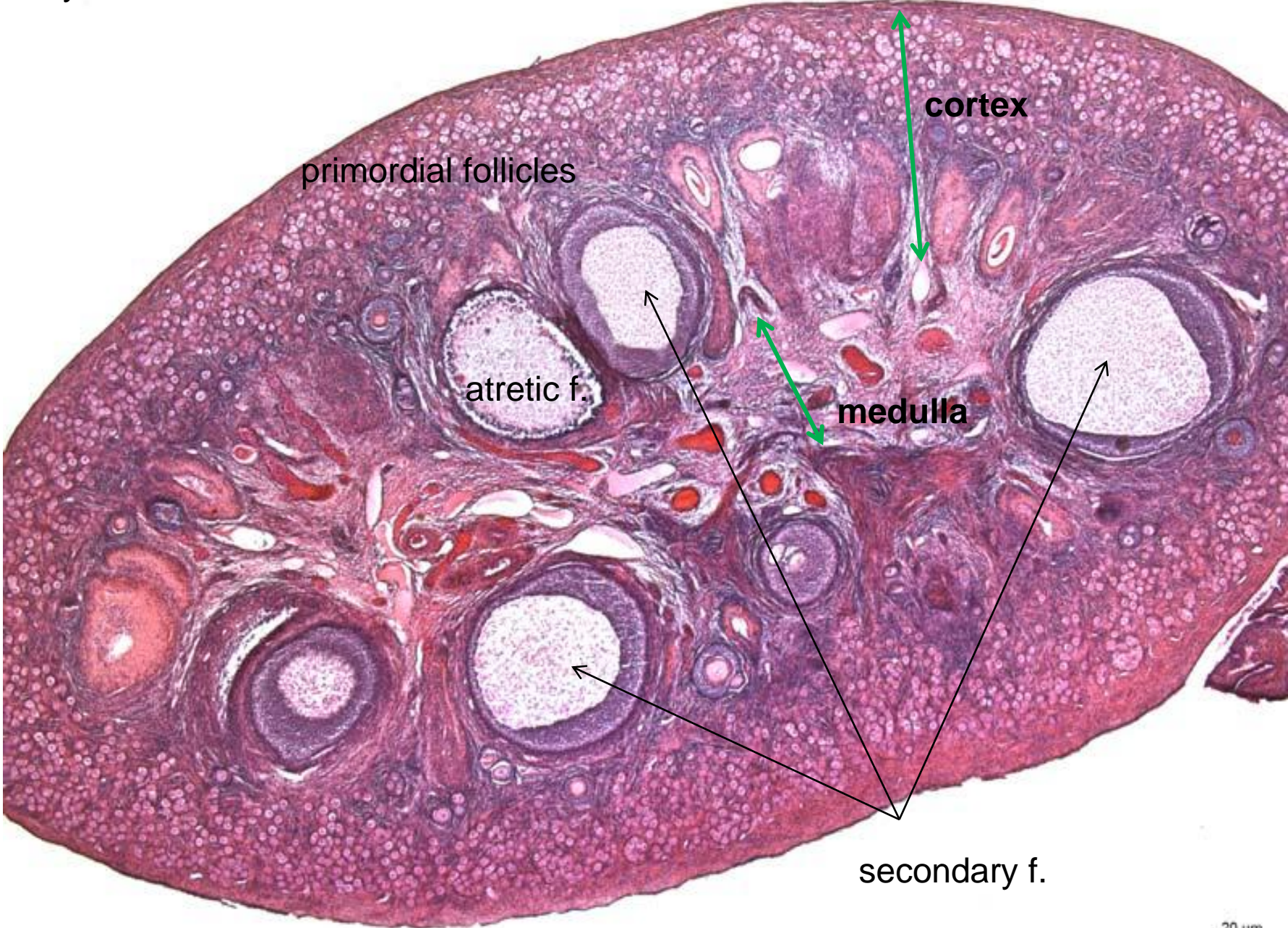


FEMALE REPRODUCTIVE SYSTEM I

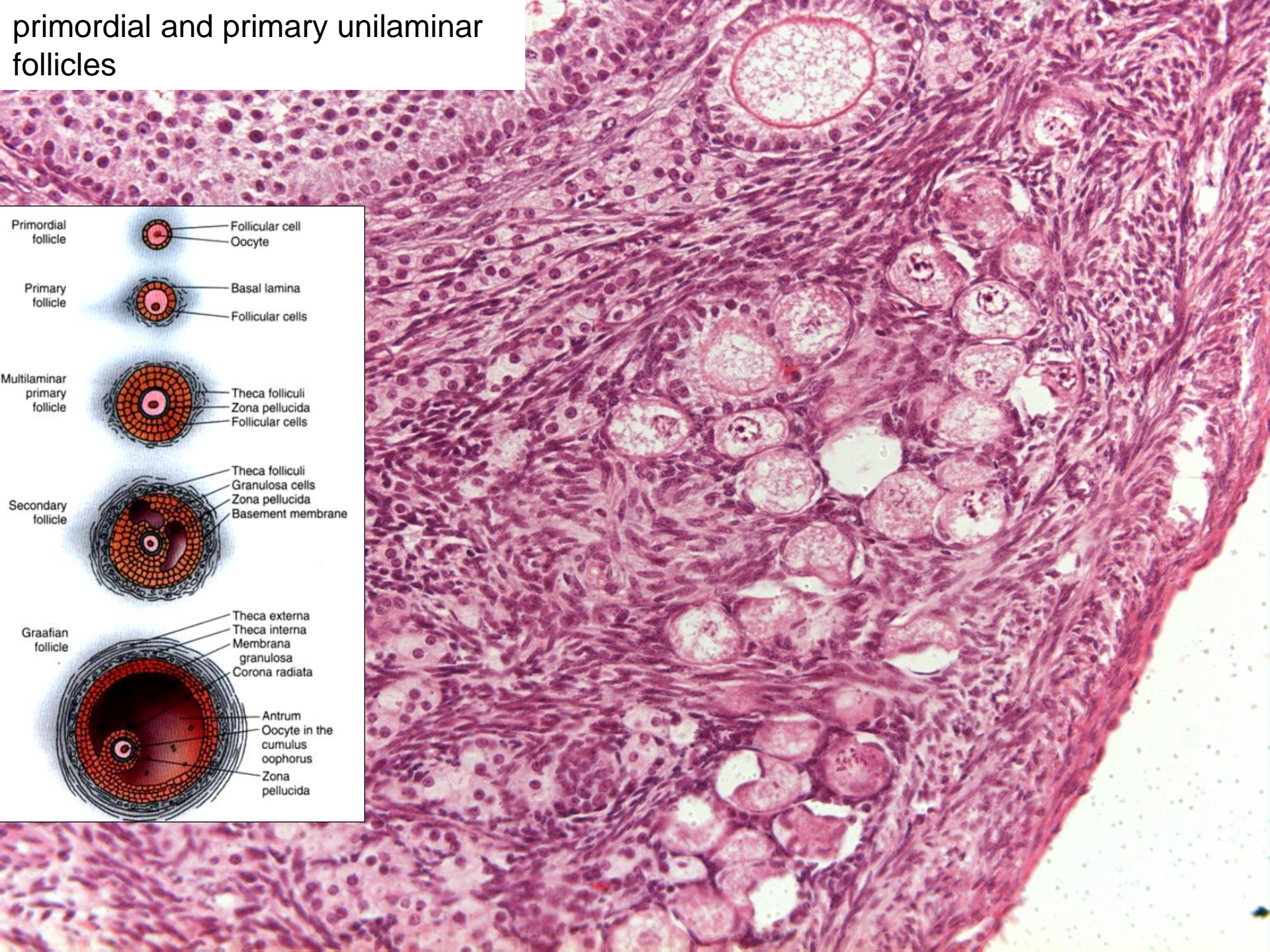
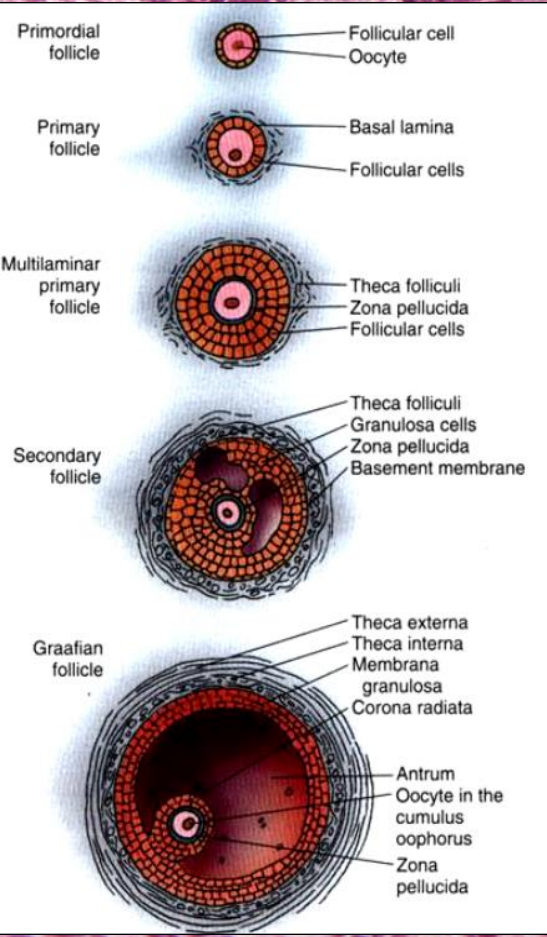
- **ovary** (ovarium, oophoron)
- **oviduct** (tuba uterina, tuba Fallopii, salpinx)
- **uterus** (uterus, metra, hystera)

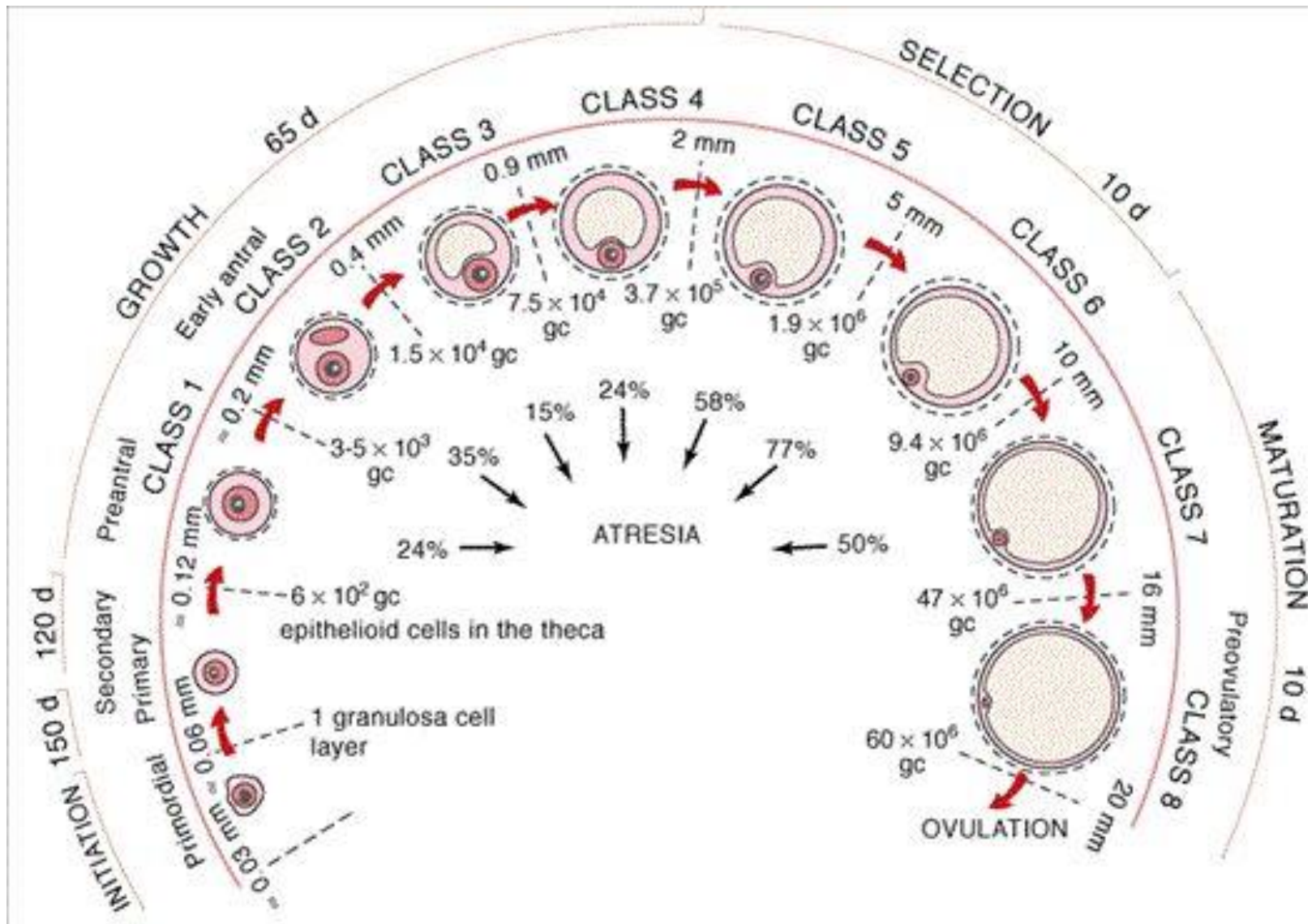


ovary-cat



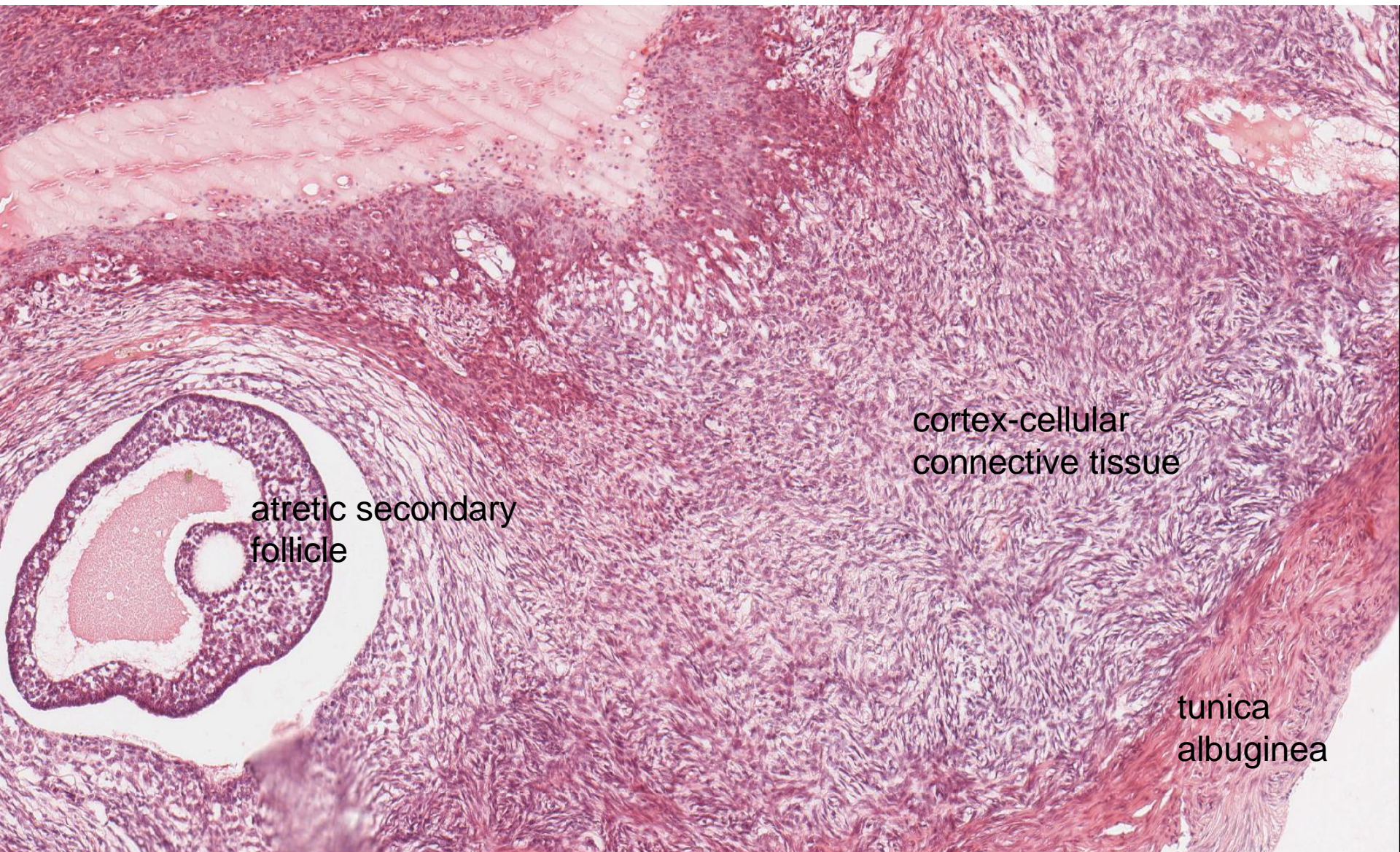
primordial and primary unilaminar follicles





Source: Gardner DG, Shoback D: Greenspan's Basic & Clinical Endocrinology, 9th Edition: www.accessmedicine.com
 Copyright © The McGraw-Hill Companies, Inc. All rights reserved.

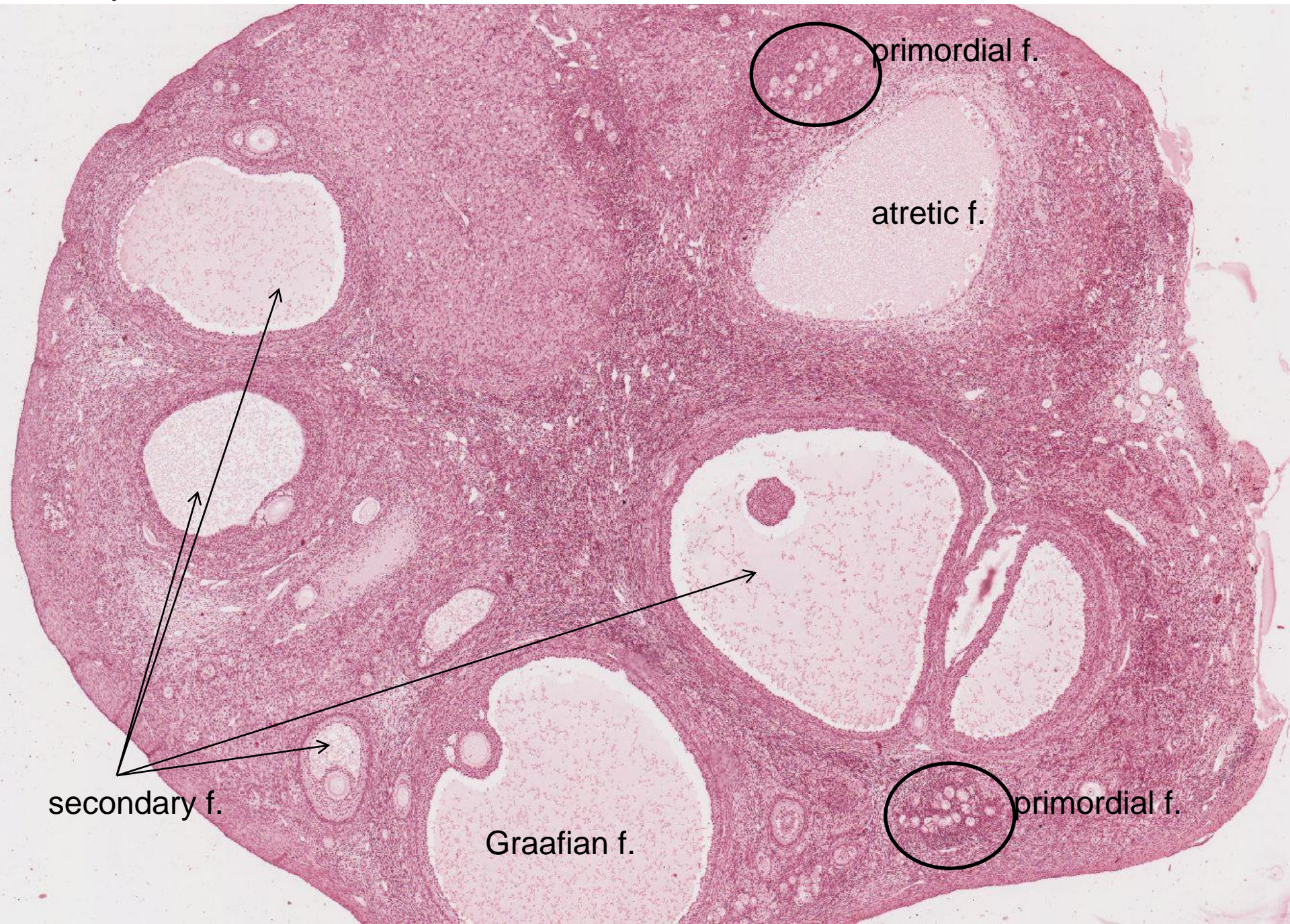
ovary-human



atretic secondary
follicle

cortex-cellular
connective tissue

tunica
albuginea



primordial f.

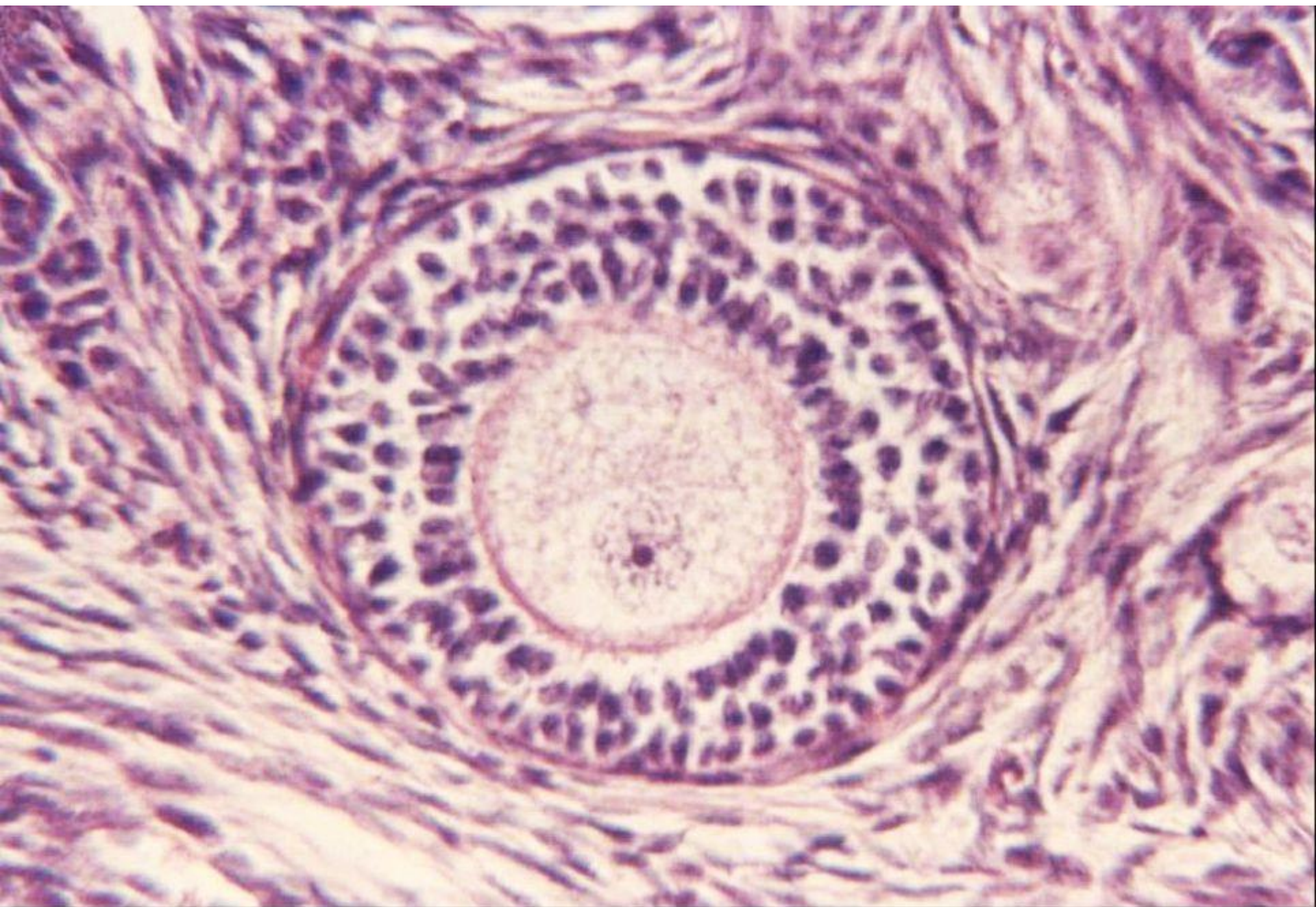
atretic f.

secondary f.

Graafian f.

primordial f.

primary multilaminar follicle



ovarian follicle -TEM

fibroblasts

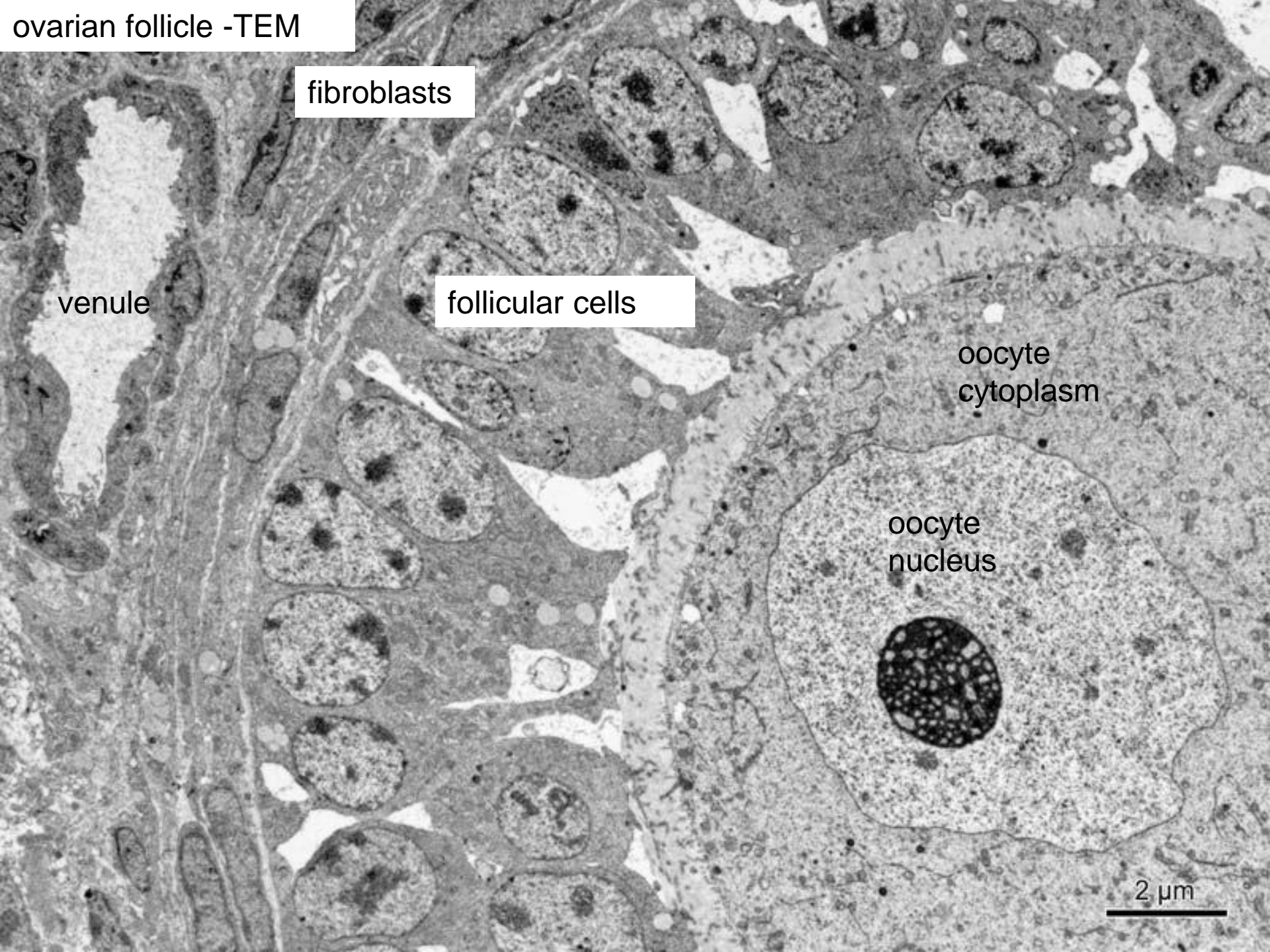
venule

follicular cells

oocyte
cytoplasm

oocyte
nucleus

2 μ m



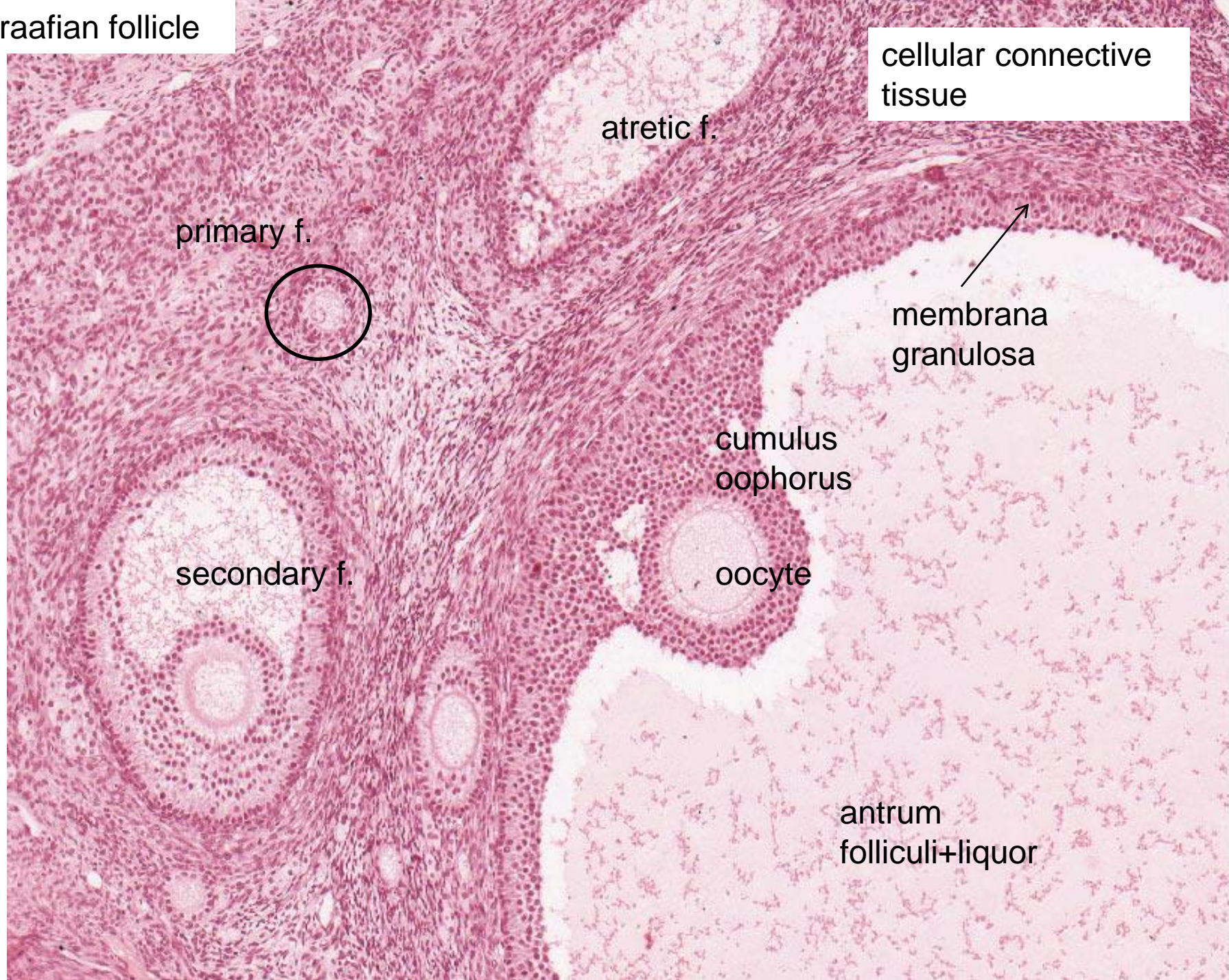
secondary follicle



theca f.
interna

membrana
granulosa

Graafian follicle



germinative epithelium

tunica albuginea

theca f. externa

theca f. interna

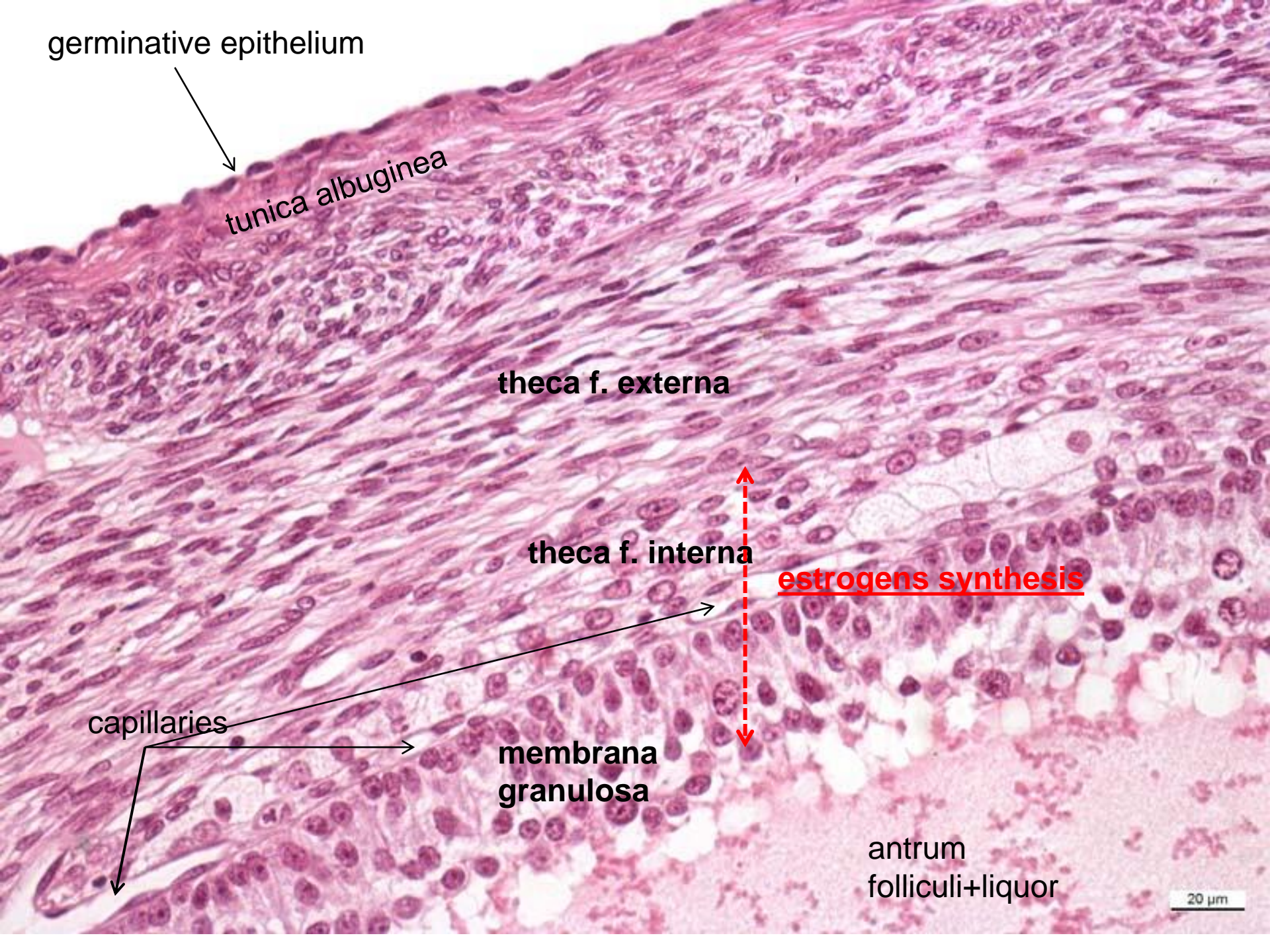
estrogens synthesis

capillaries

membrana
granulosa

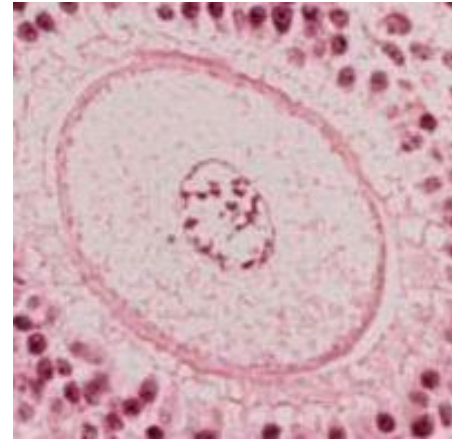
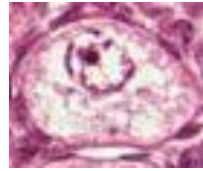
antrum
folliculi+liquor

20 μm



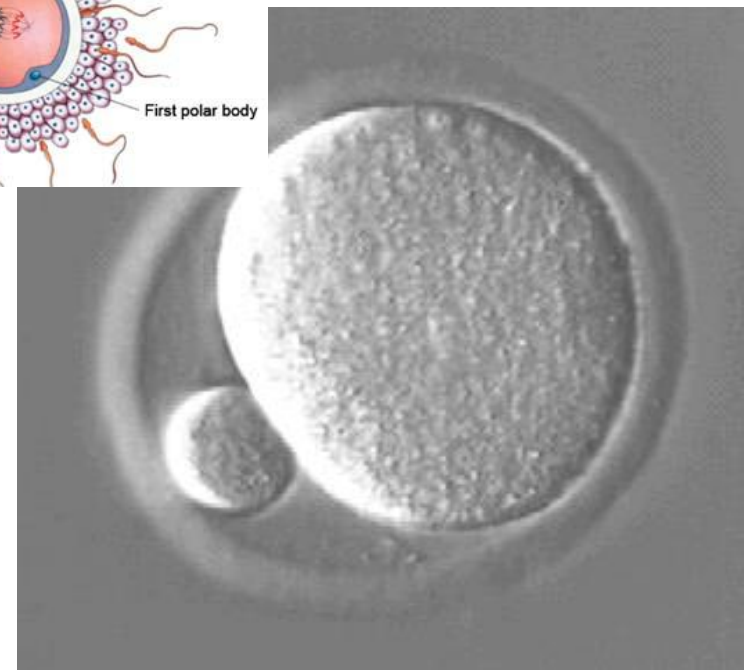
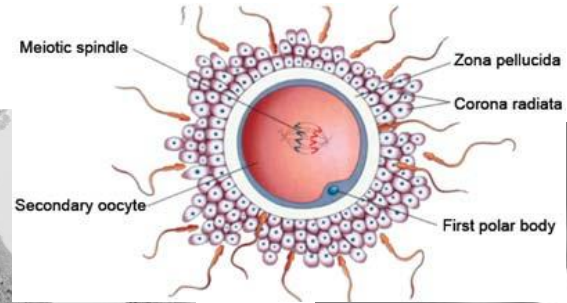
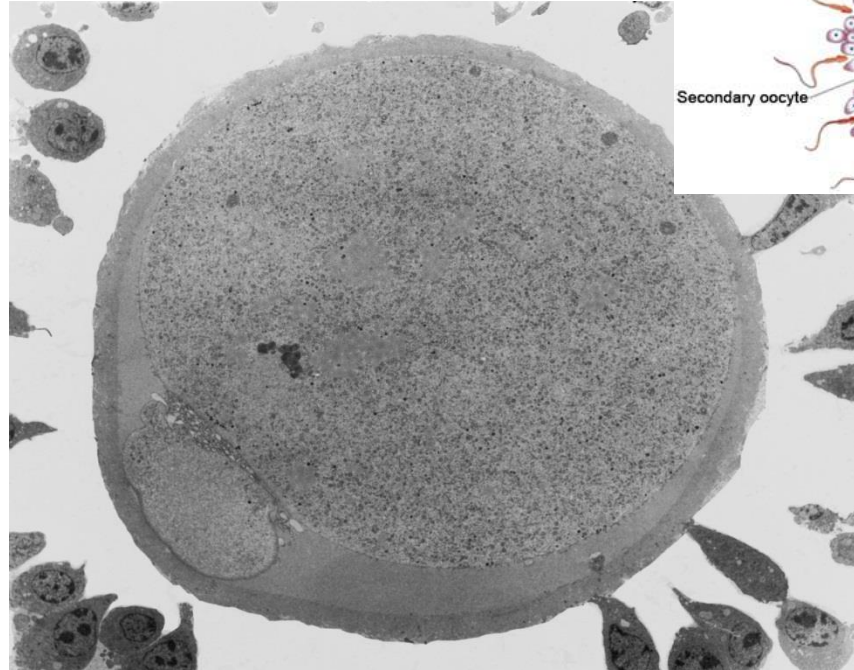
oocyte during 1st meiotic division

30 μm

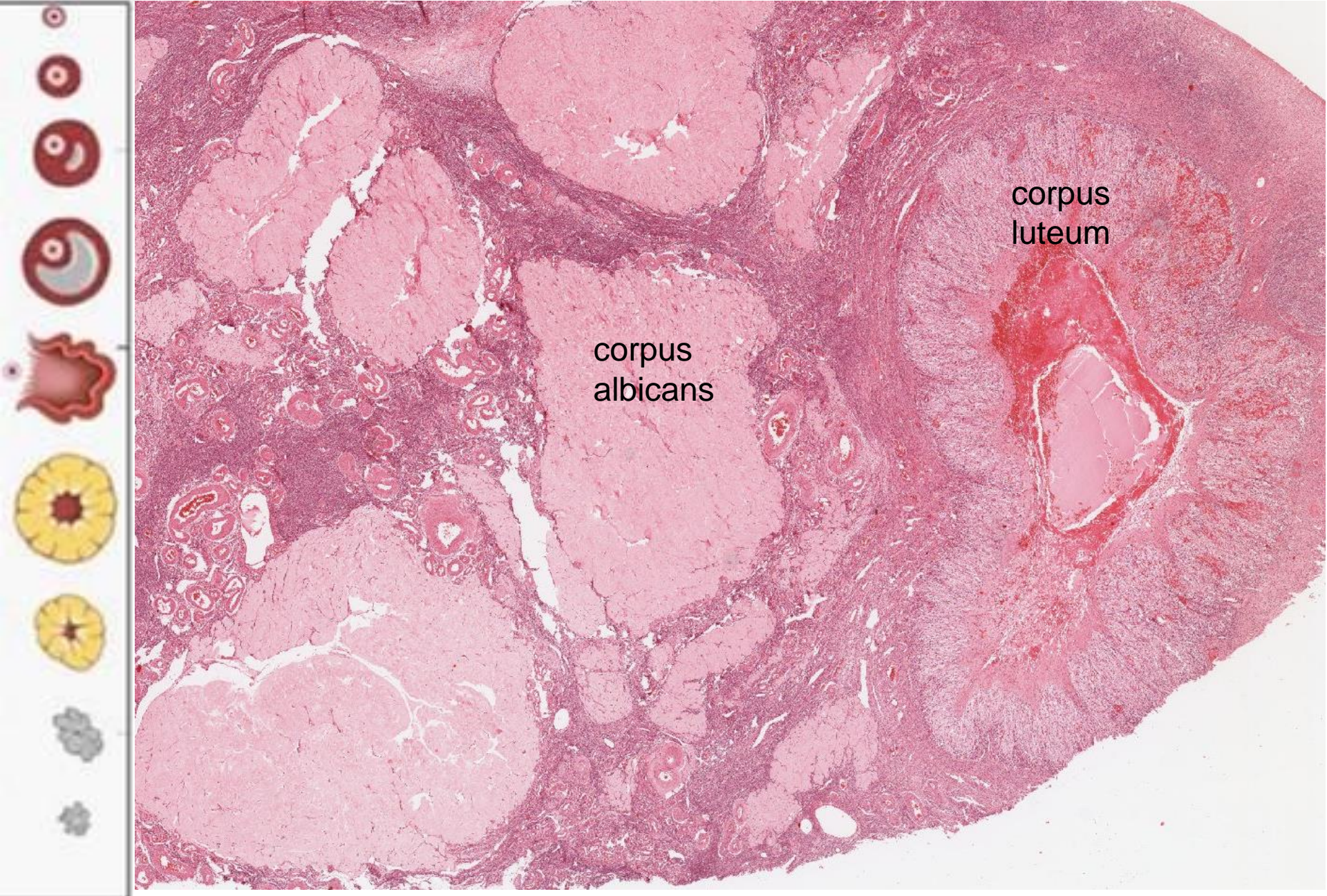


130 μm

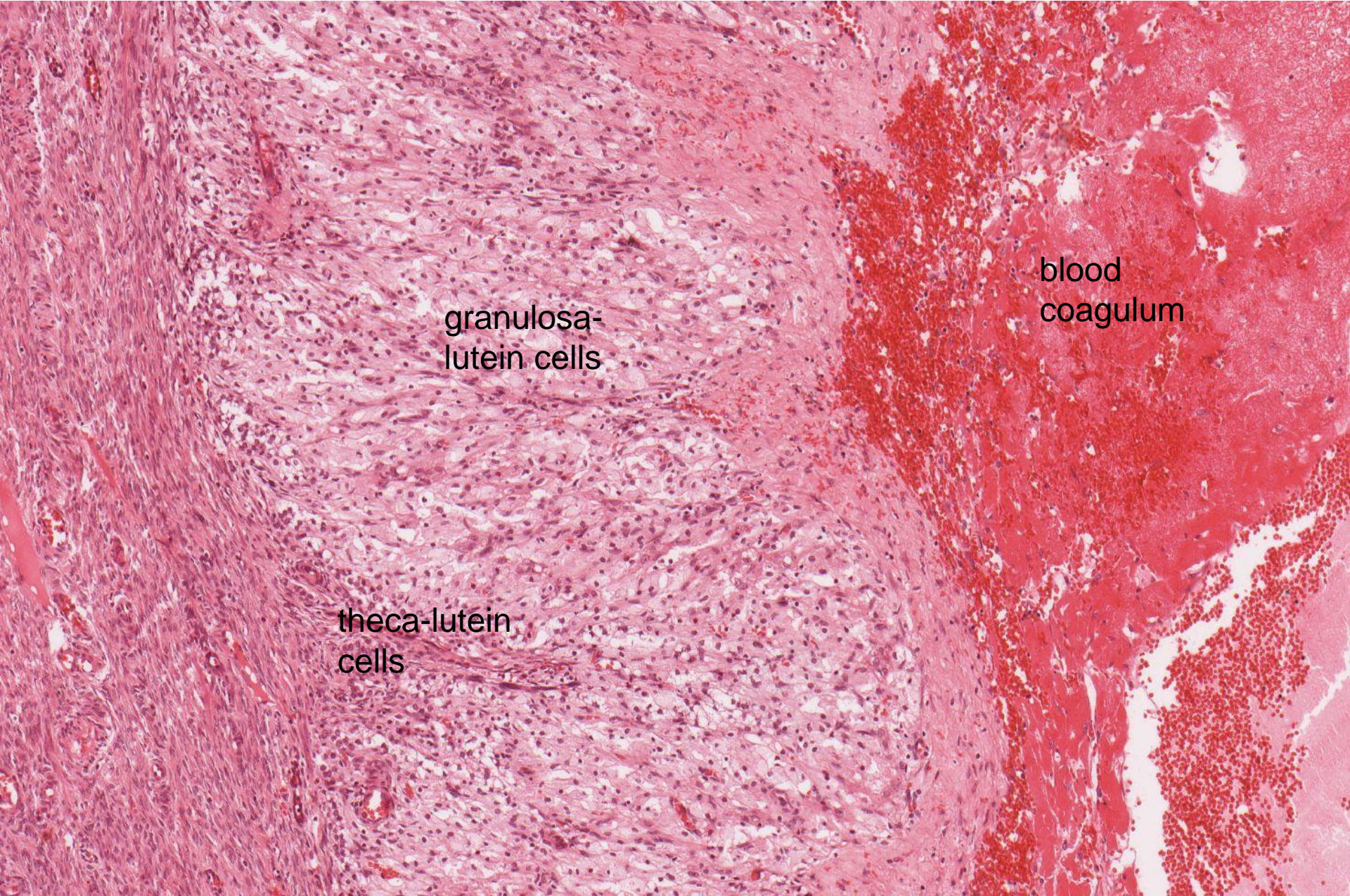
oocyte during ovulation



ovary-corpora luteum



ovary-corpus luteum

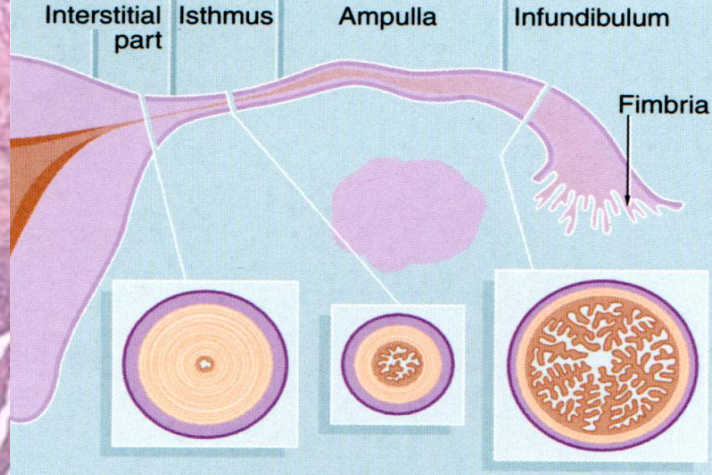


granulosa-
lutein cells

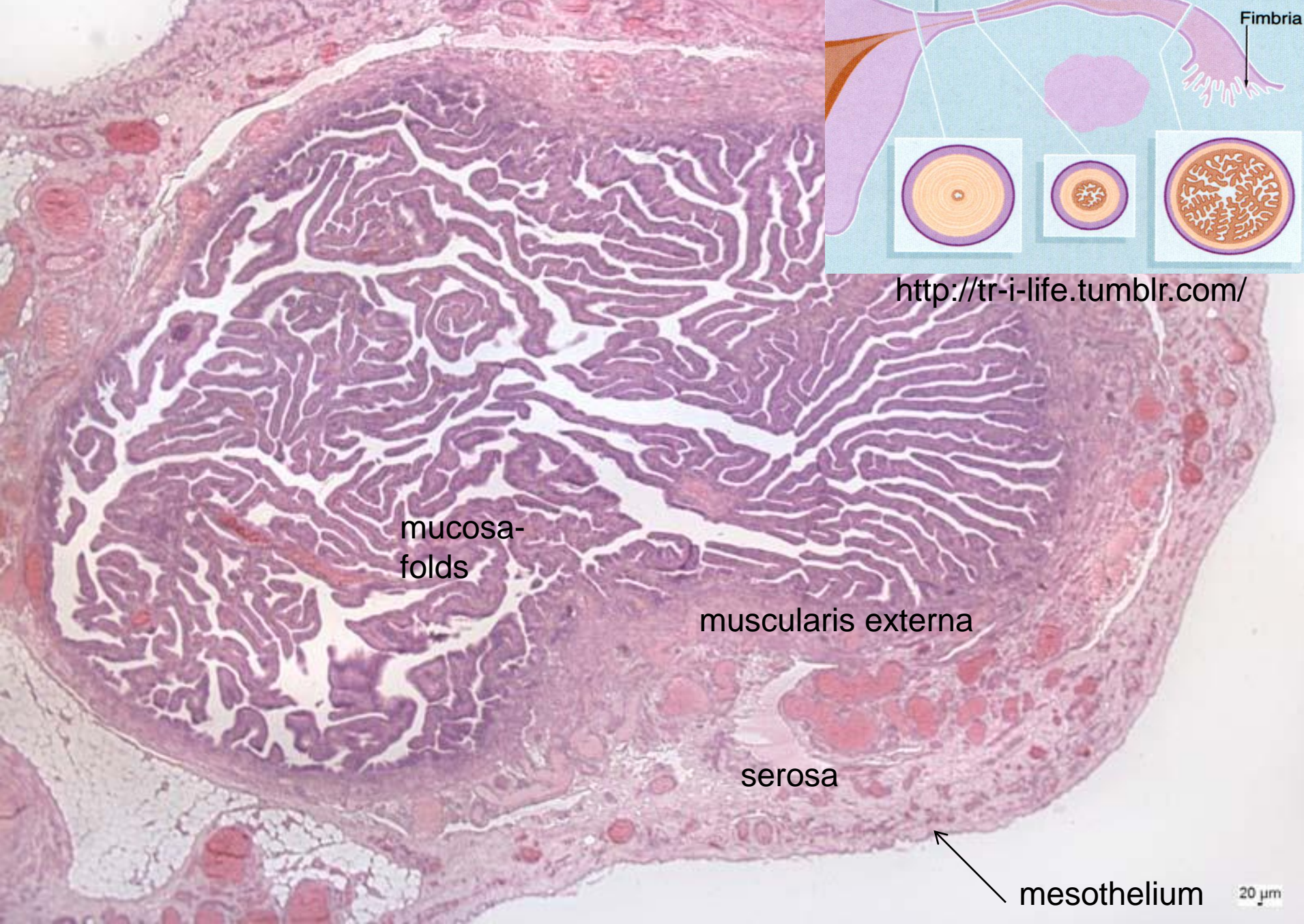
blood
coagulum

theca-lutein
cells

tuba uterina-ampulla



<http://tr-i-life.tumblr.com/>



mucosa-folds

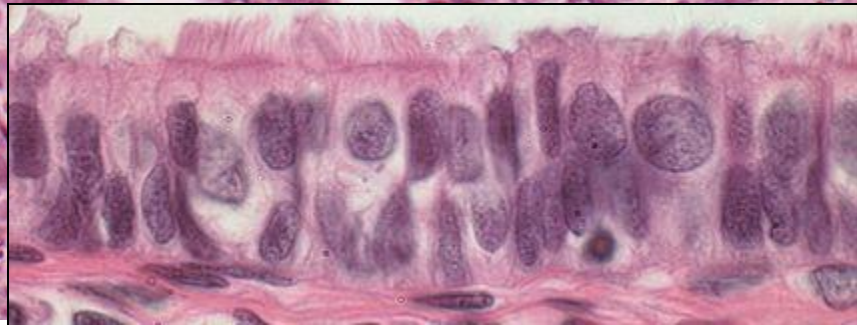
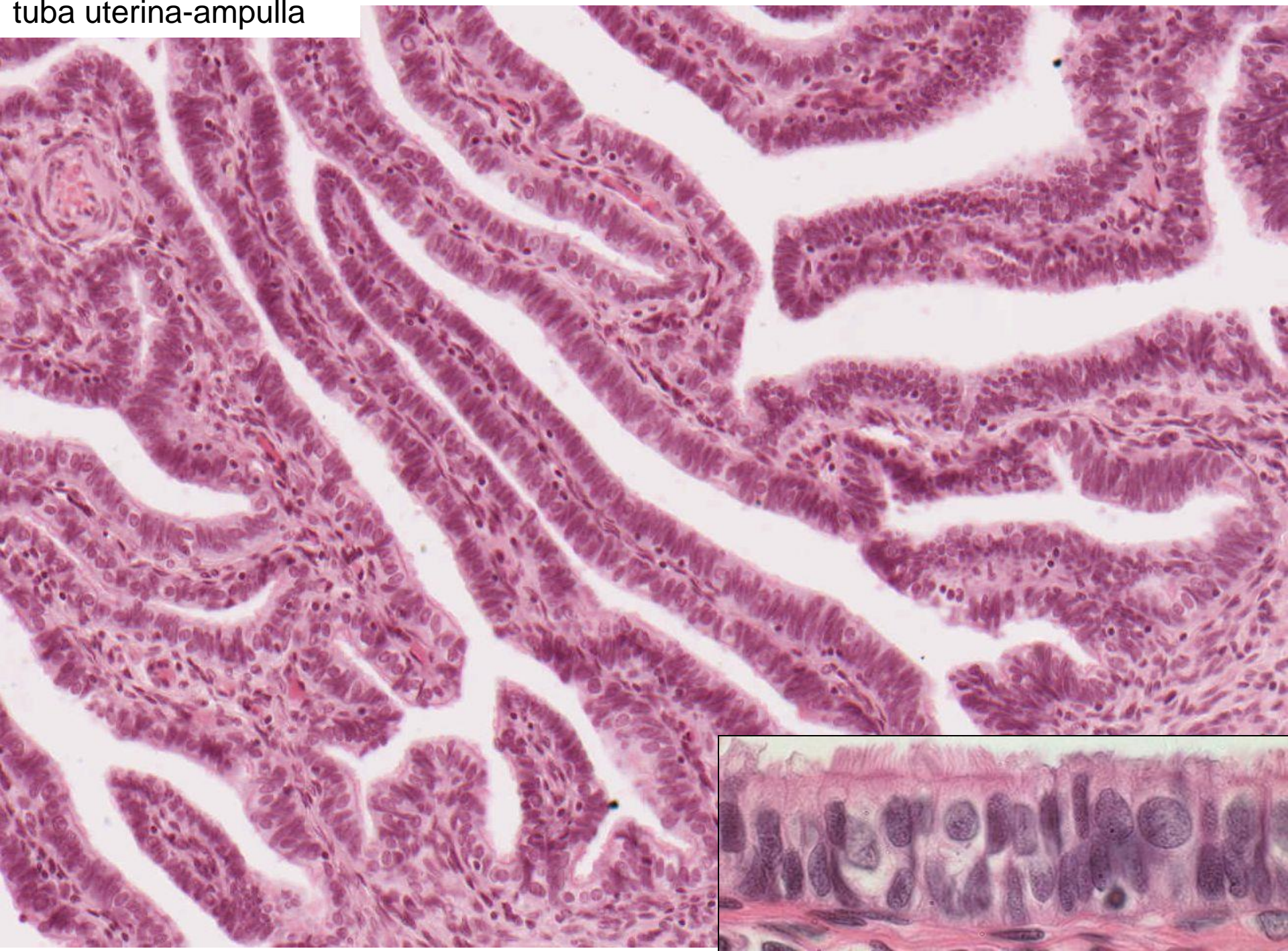
muscularis externa

serosa

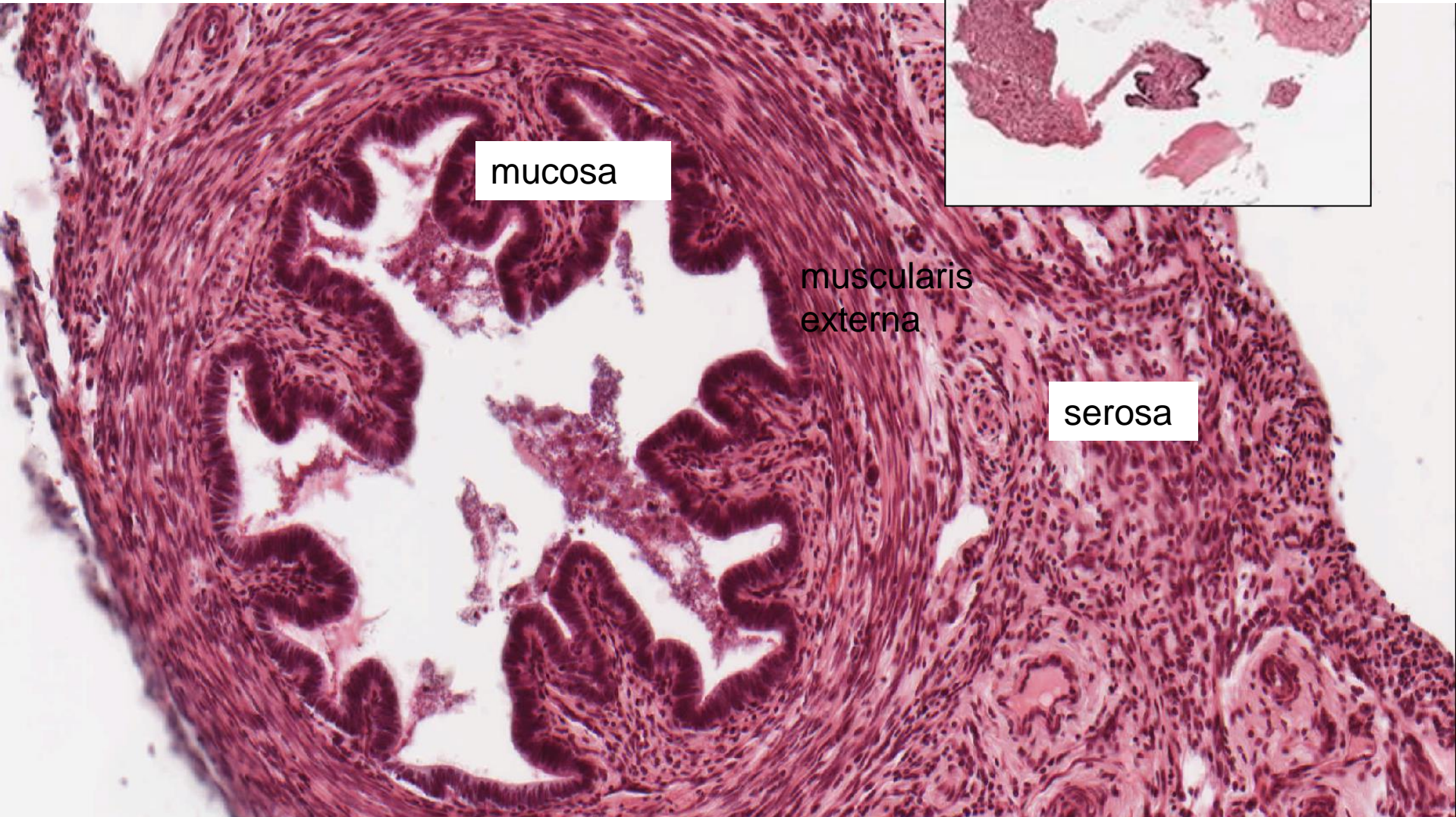
mesothelium

20 μm

tuba uterina-ampulla



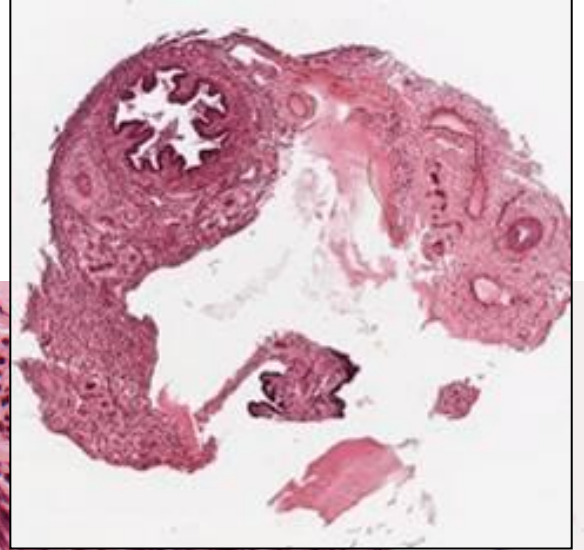
tuba uterina-isthmus

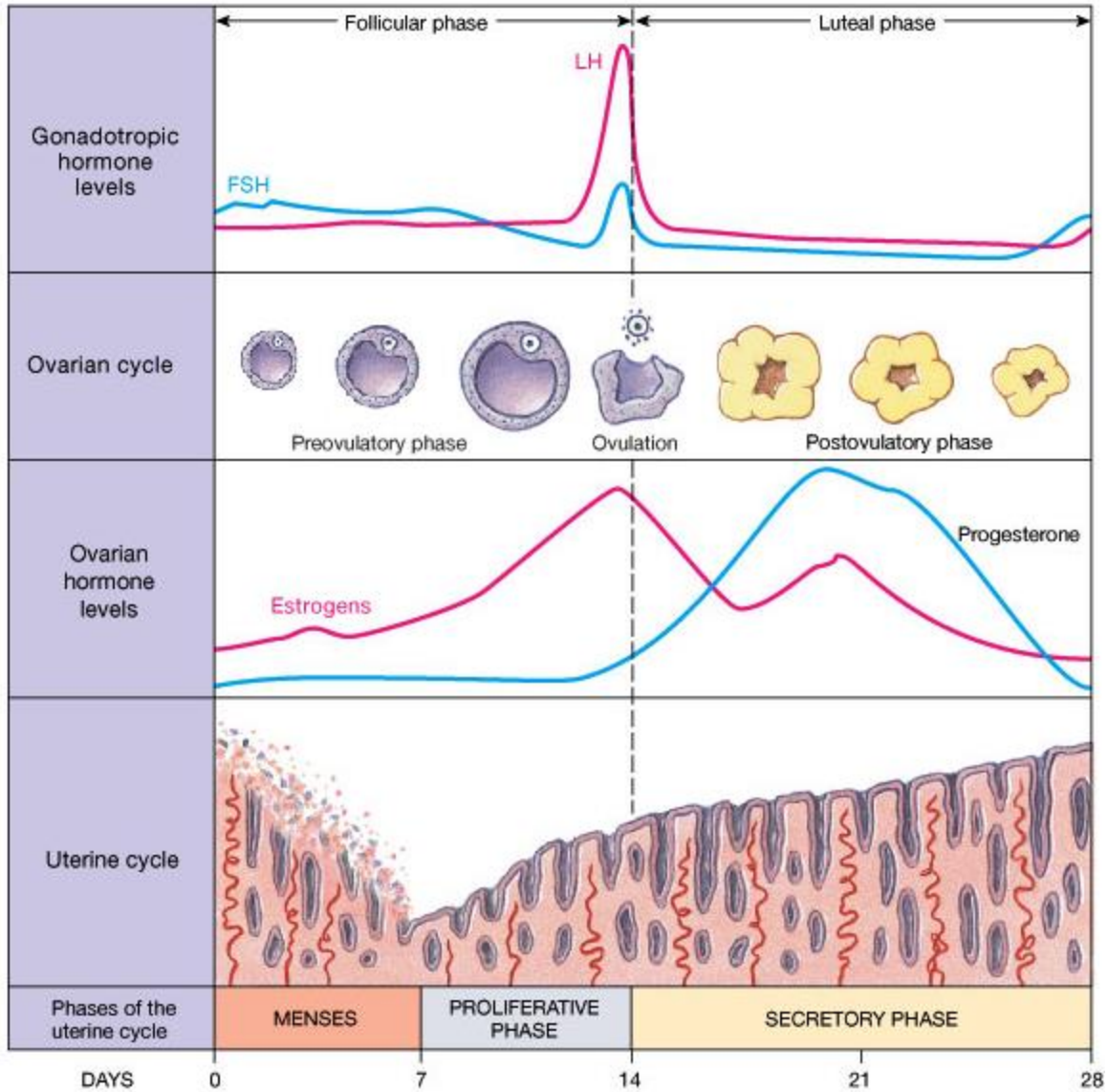


mucosa

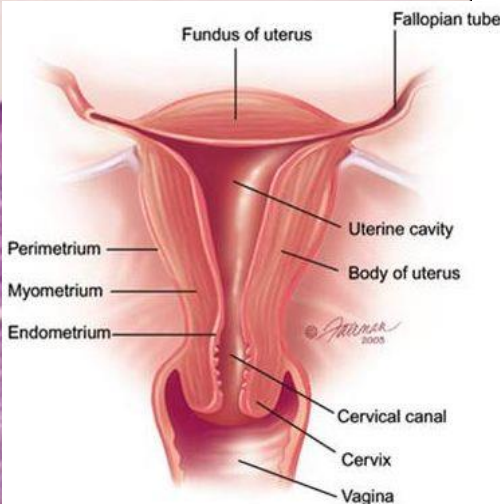
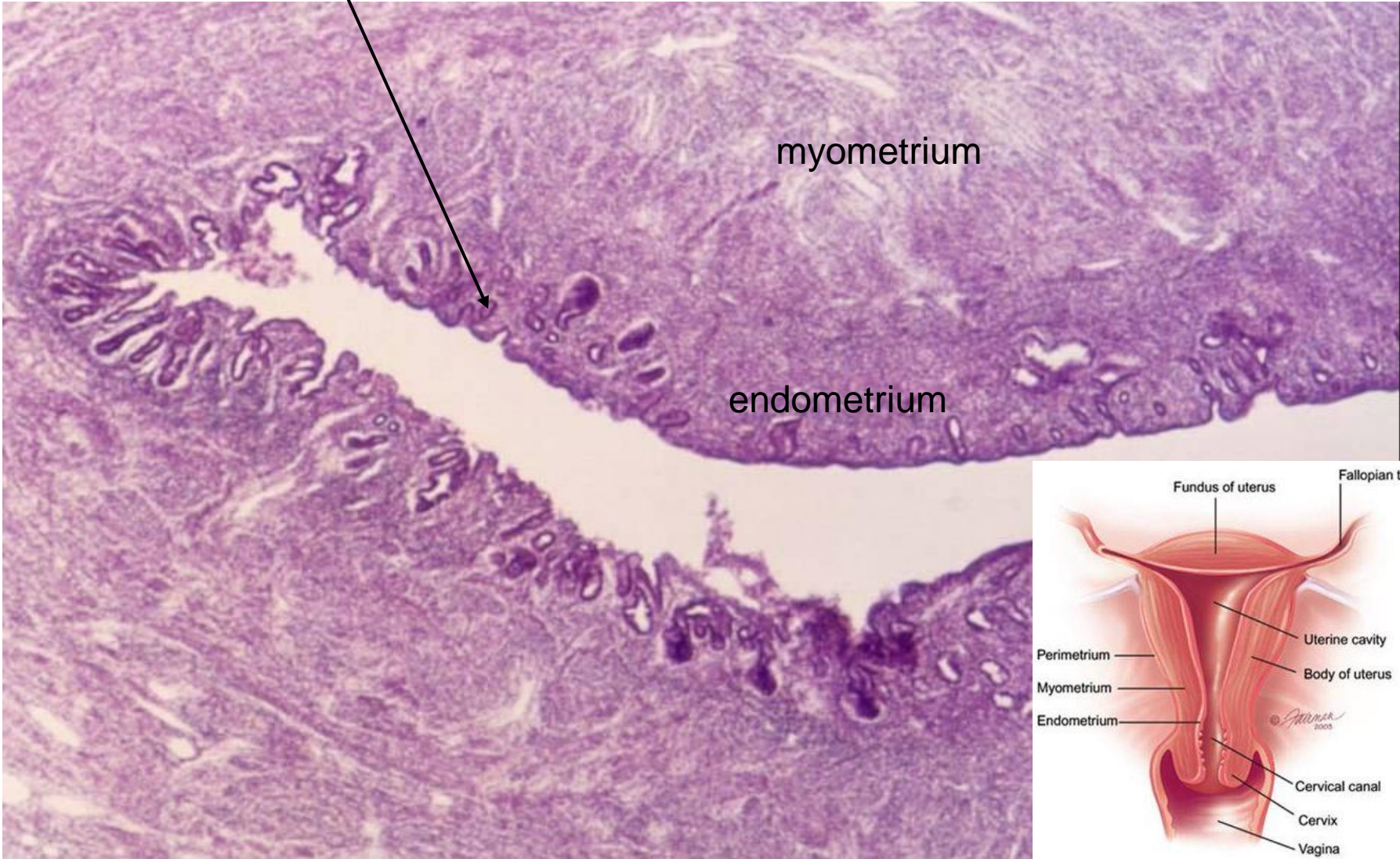
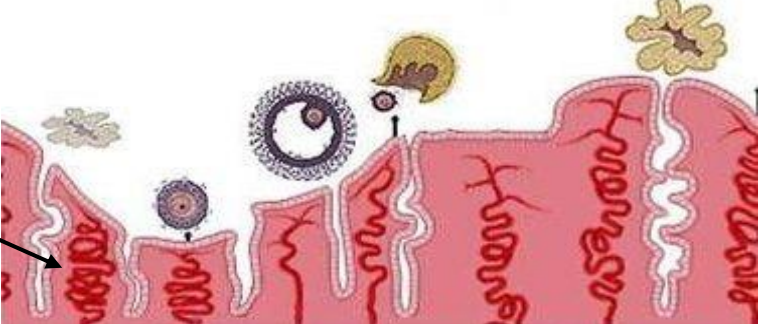
muscularis
externa

serosa



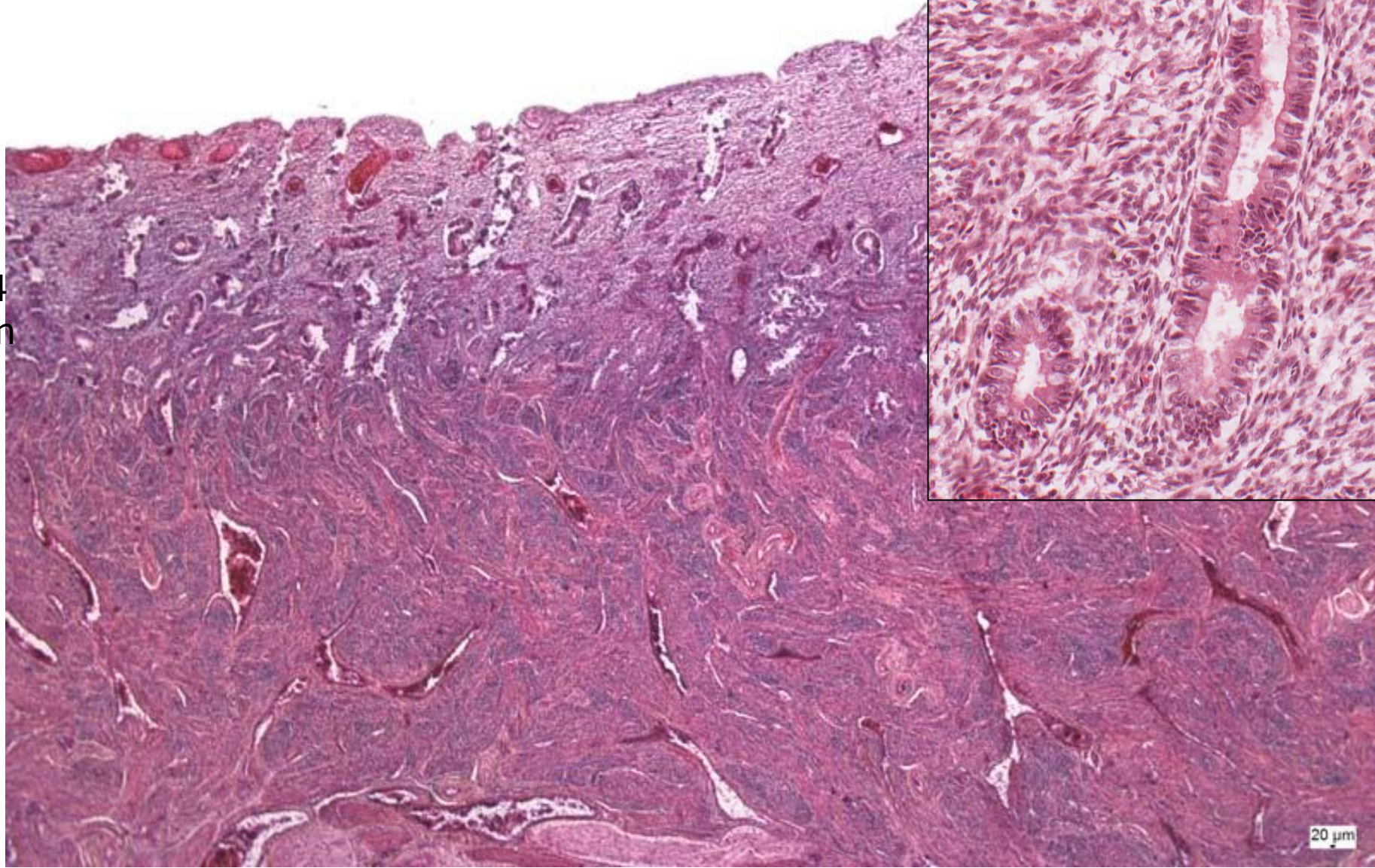


Ovarian and menstrual cycle



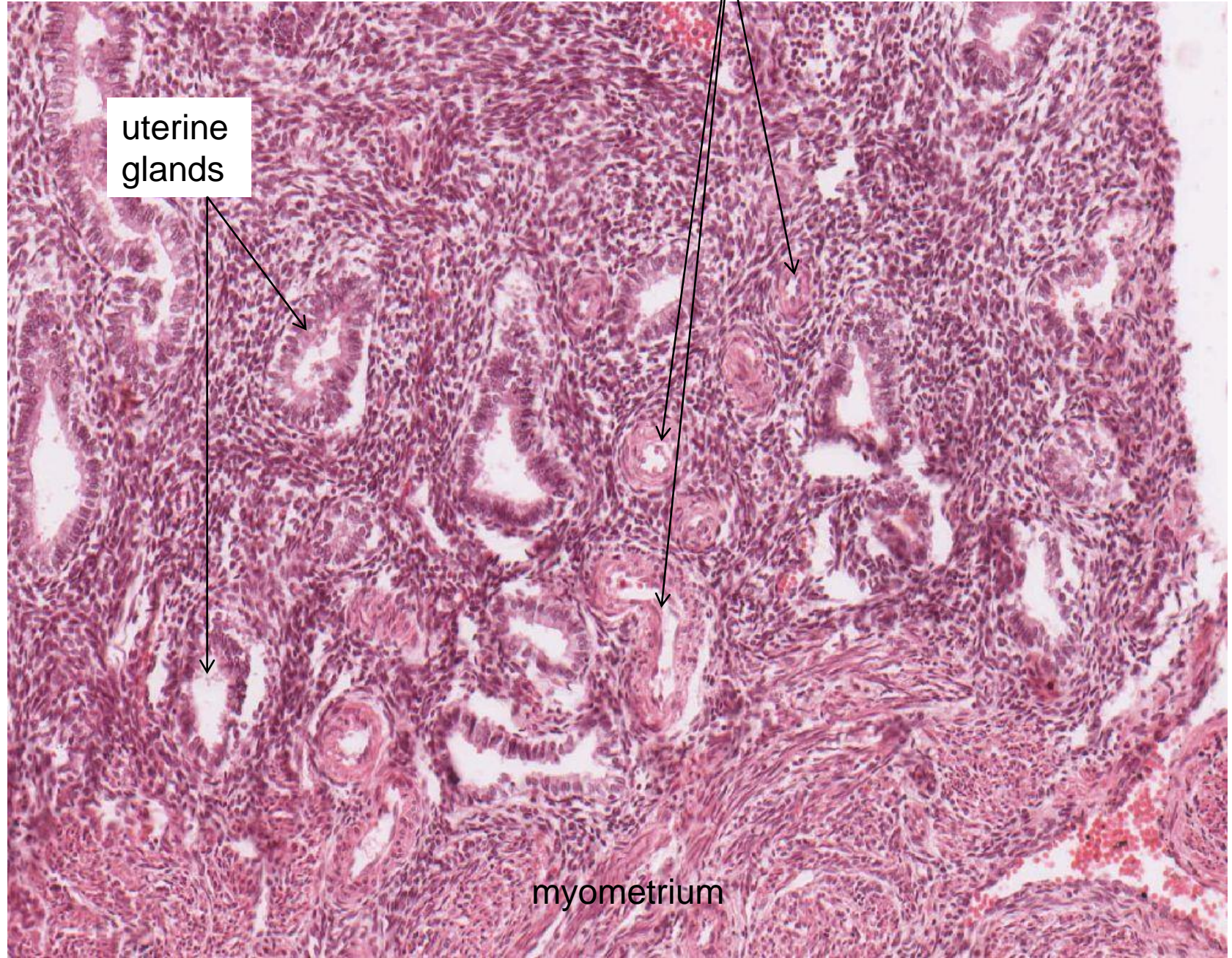
**Endometrium – proliferative phase
– glandulae uterinae**

3-4
mm

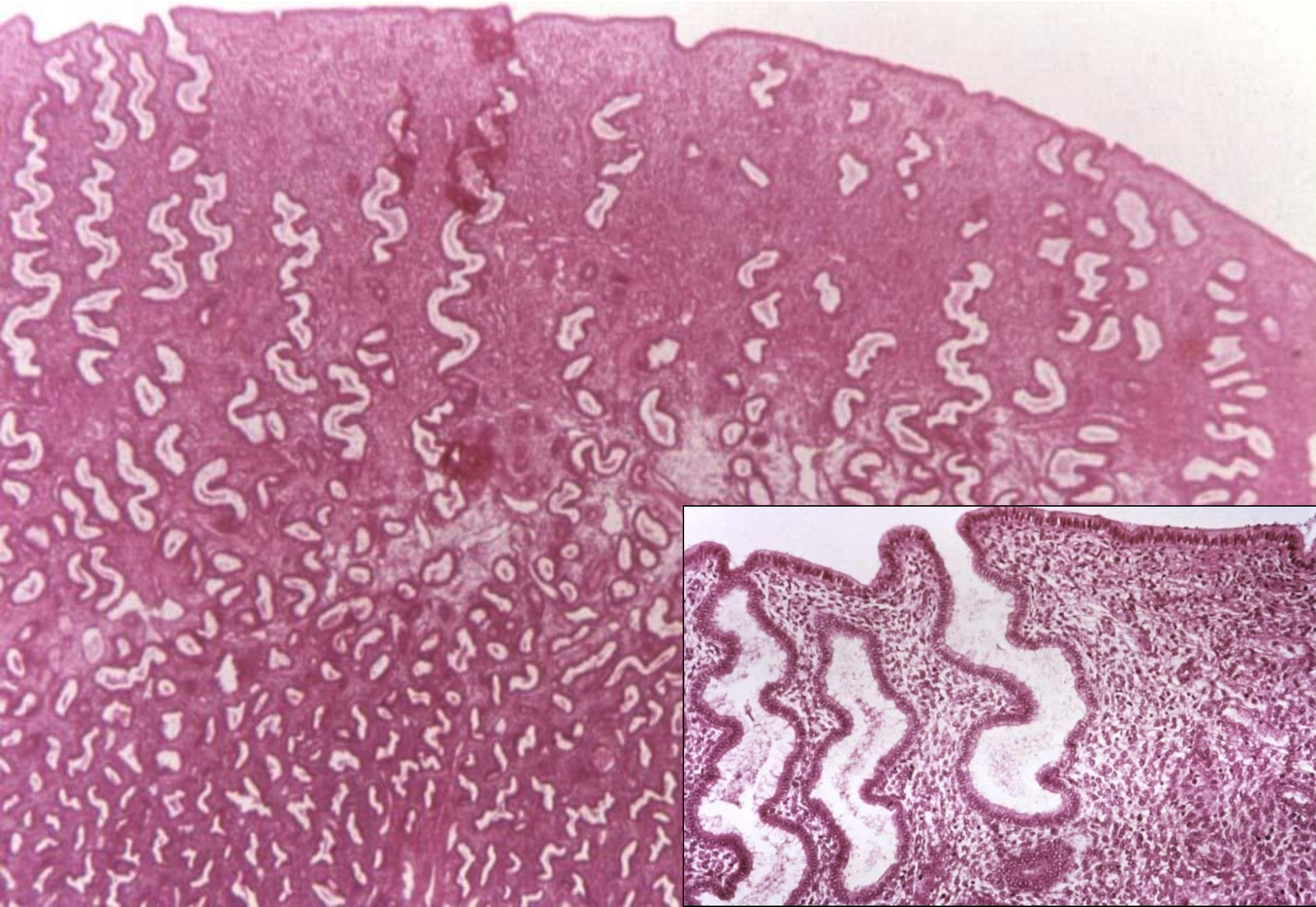


20 μm

Endometrium – proliferative phase – arteriae helicinae, connective tissue stroma rich in cells

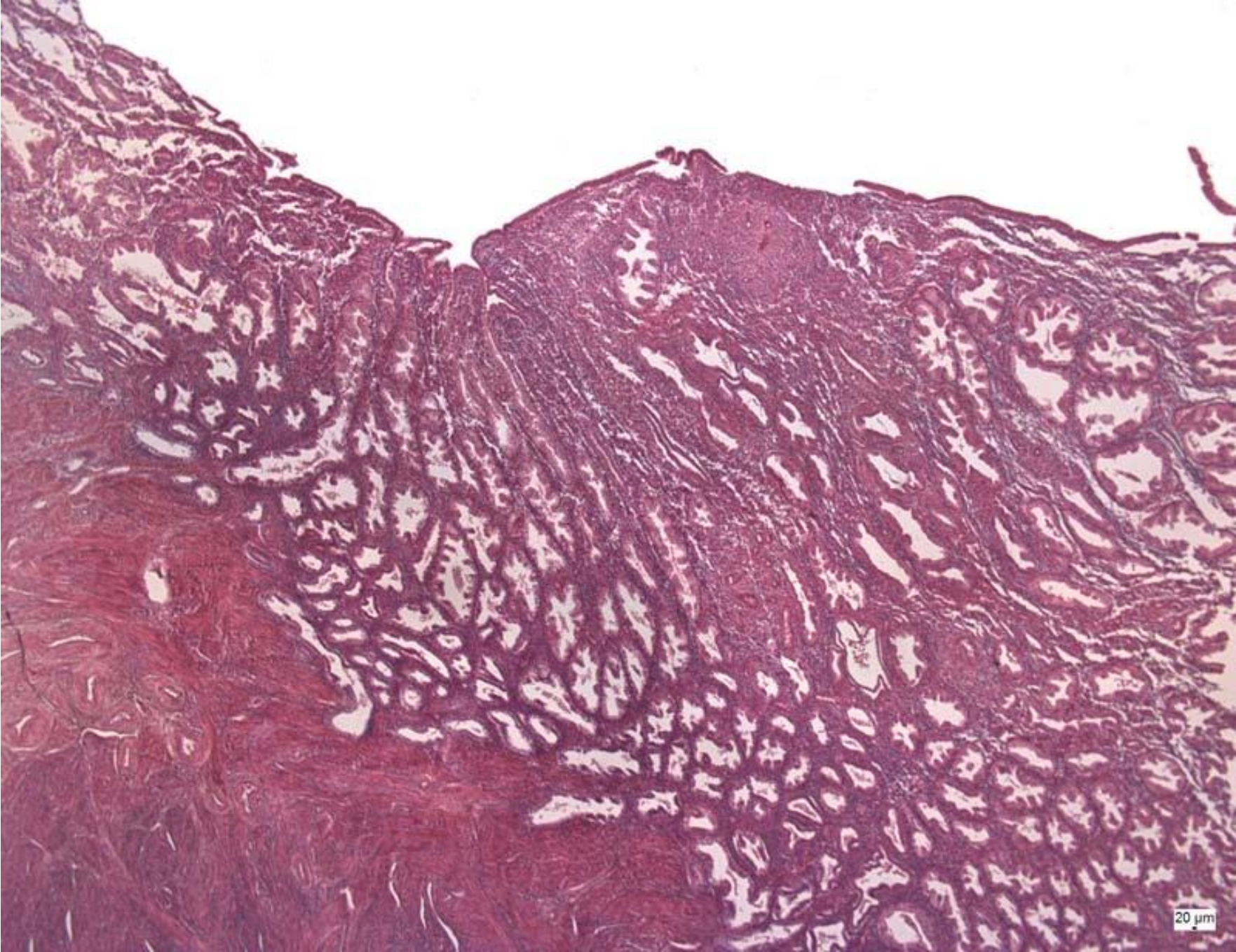


Endometrium – early secretory phase

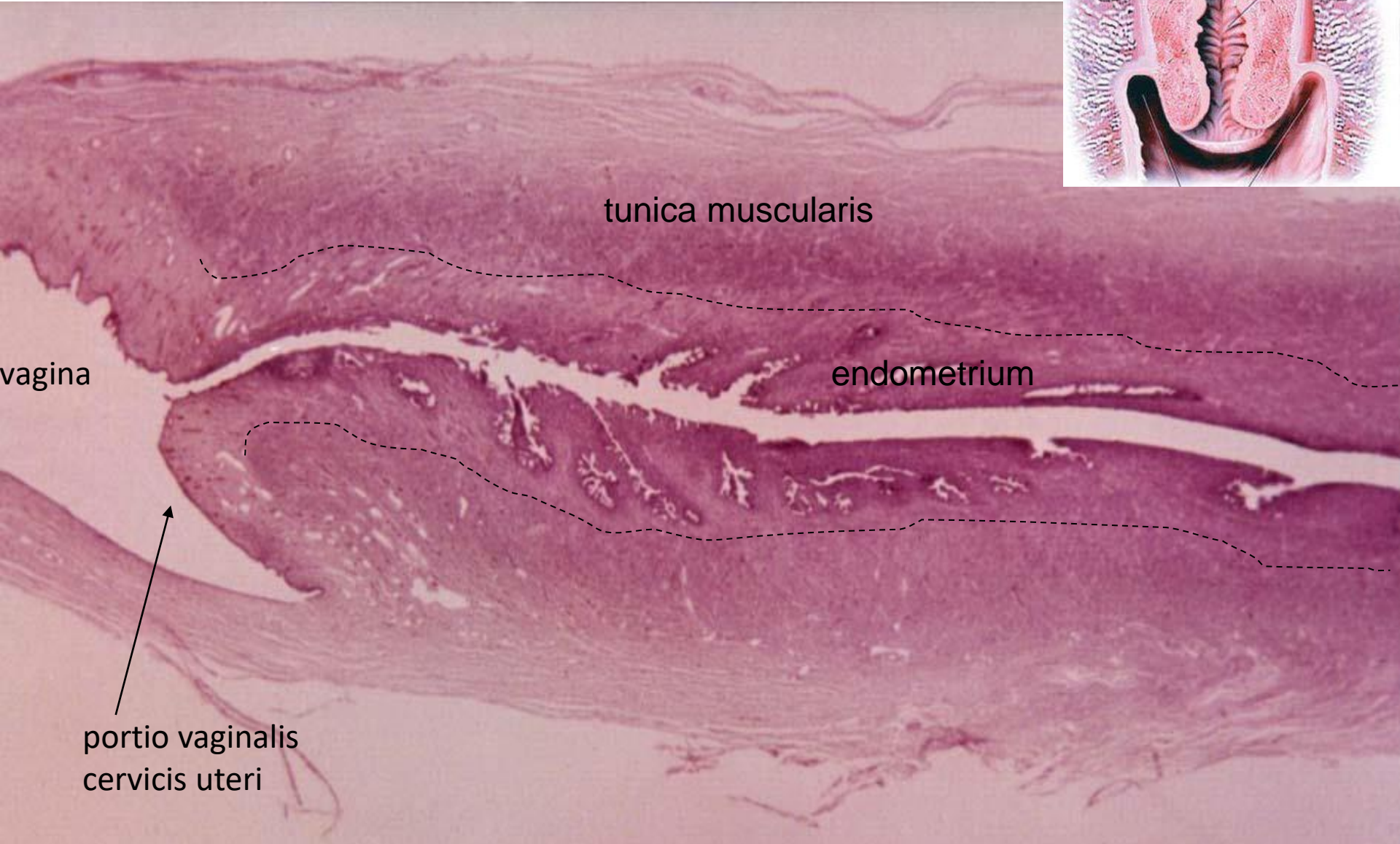
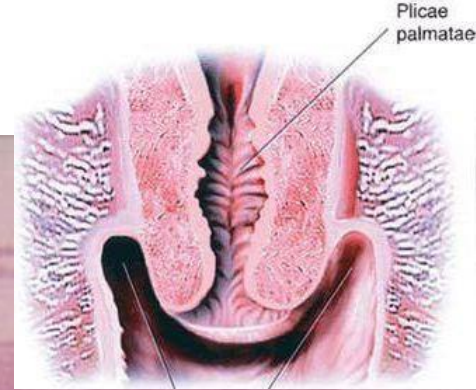


Endometrium – midsecretory phase

**5-7
mm**



Cervix uteri

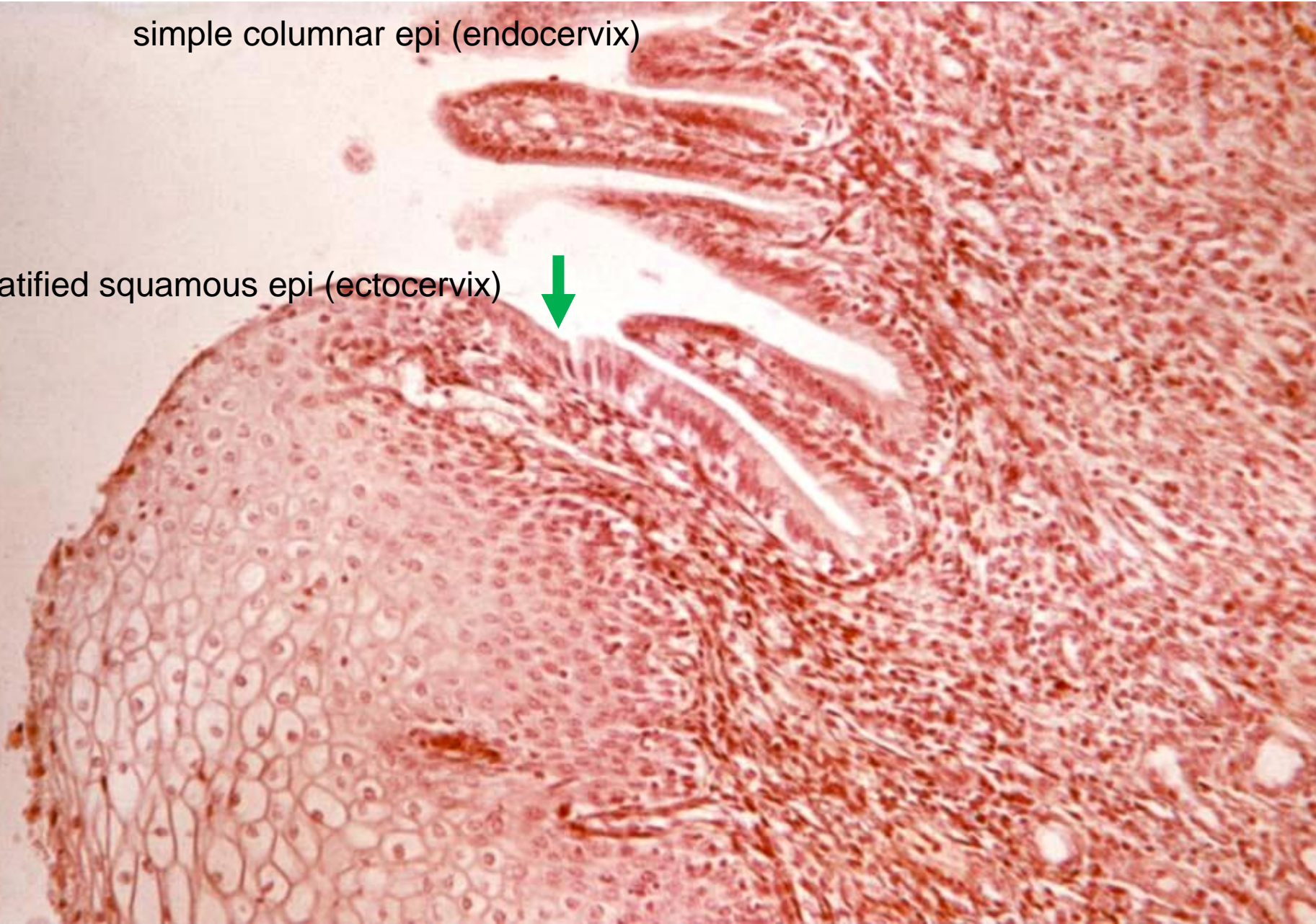


cervical glands – cervical mucus

Portio vaginalis cervicis uteri - squamocolumnar junction

simple columnar epi (endocervix)

stratified squamous epi (ectocervix)





FEMALE REPRODUCTIVE SYSTEM I

Slides:

- 42. Ovarium
- 43. Ovarium – cat
- 44. Corpus luteum
- 45. Tuba uterina – ampulla
- 46. Tuba uterina – isthmus
- 47. Uterus – proliferative phase
- 48. Uterus – secretory phase

Atlas EM:

- Human primary ovarian follicle (72)
- From gametes to early embryo (74)