

Nervous system

Cortex cerebri

Cerebellum (impregnation)

Spinal cord

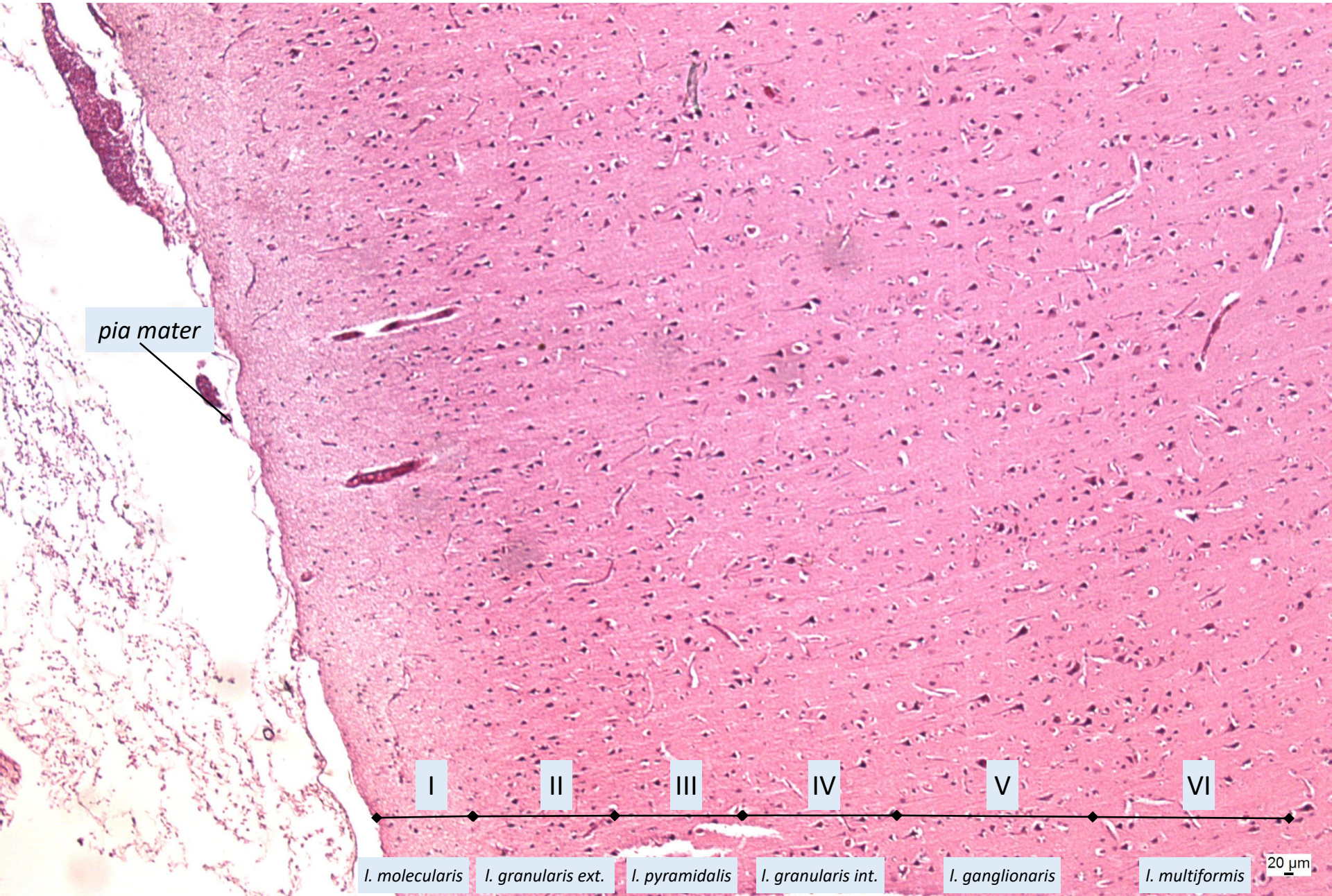
Plexus choroideus

Ganglion spinale

Autonomic ganglion

Peripheral nerve

Cerebral cortex



Cortex cerebri - izocortex

Cyto- and myeloarchitecture

Laminae (layers):

- I. I. zonalis** (cells of Cajal, band of Exner)
- II. I. granularis externa** (stellate cells)
- III. I. pyramidalis (externa)** (small + middle pyramidal cells, band of Bechterev)
- IV. I. granularis interna** (stellate cells, cells of Martinotti)
- V. I. ganglionaris (pyramidalis interna)** (large pyramidal cells of Betz, cells of Martinotti, inner band of Baillarger)
- VI. I. multiformis** (fusiform cells, granular cells, cells of Martinotti, band of Meynert)

I. L. molecularis
(zonalis)

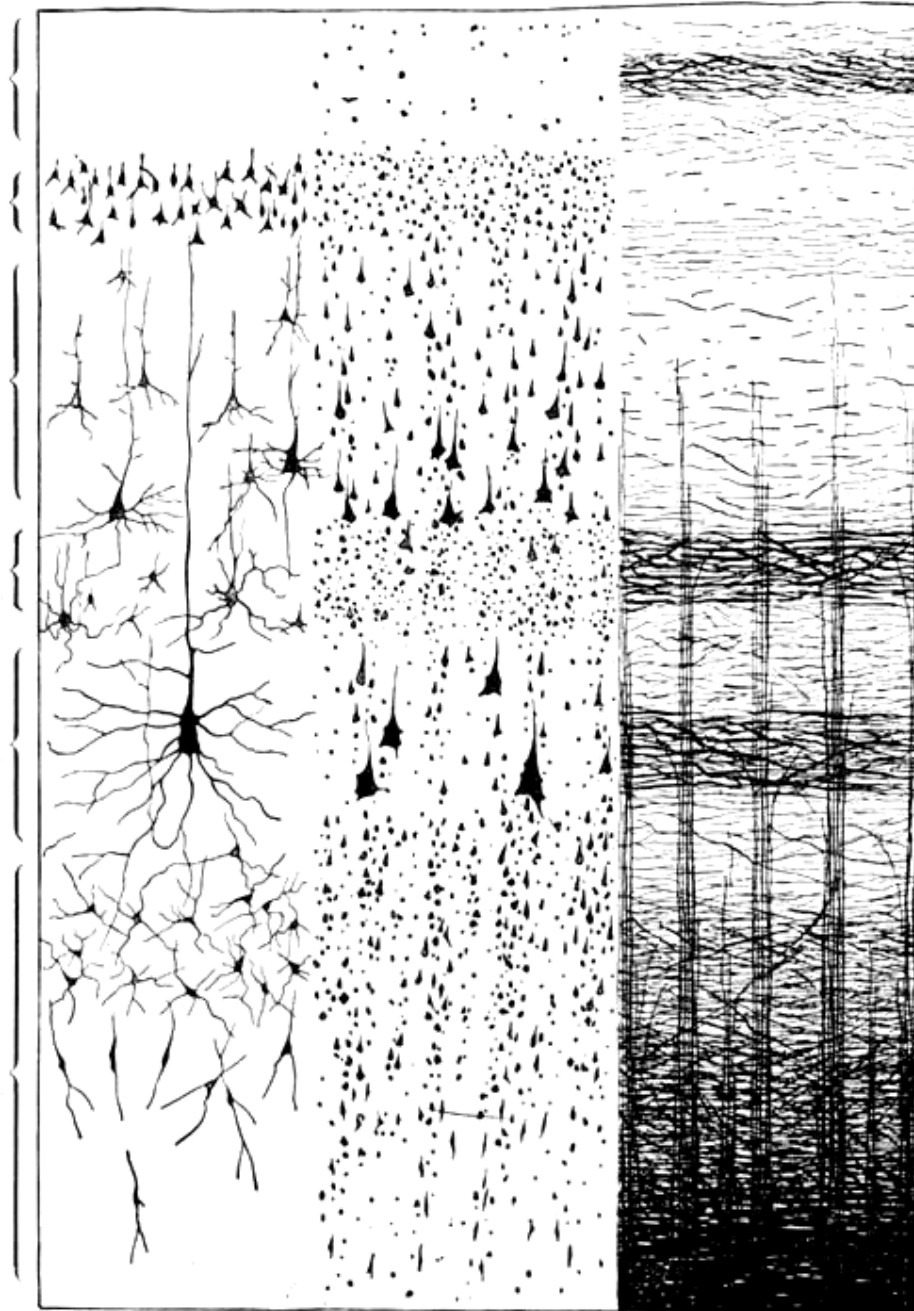
II. L. granularis ext.

III. L. pyramidalis

IV. L. granularis int.

V L. ganglionaris

VI. L. multiformis



Exner

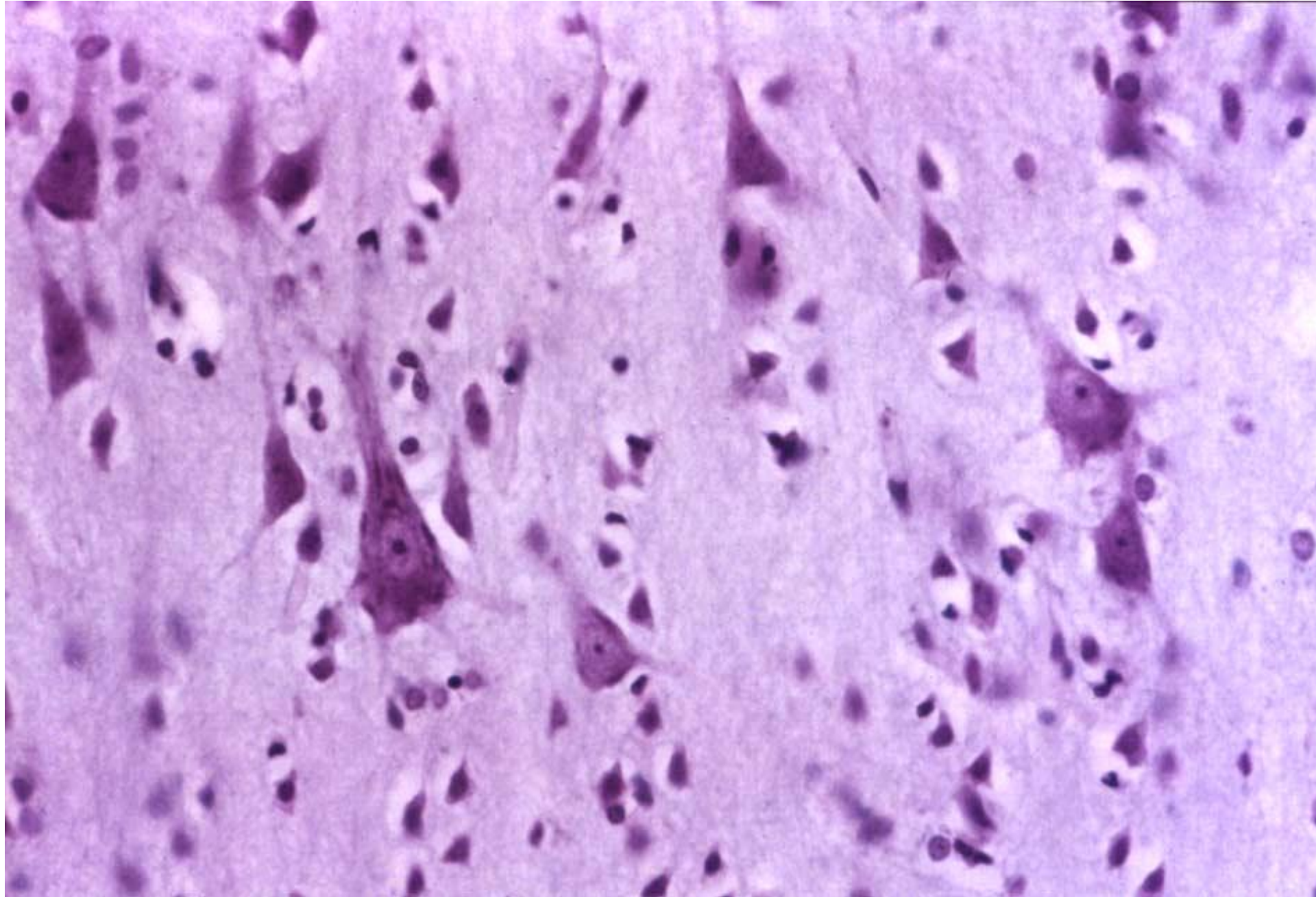
Bechterev

outer Baillarger

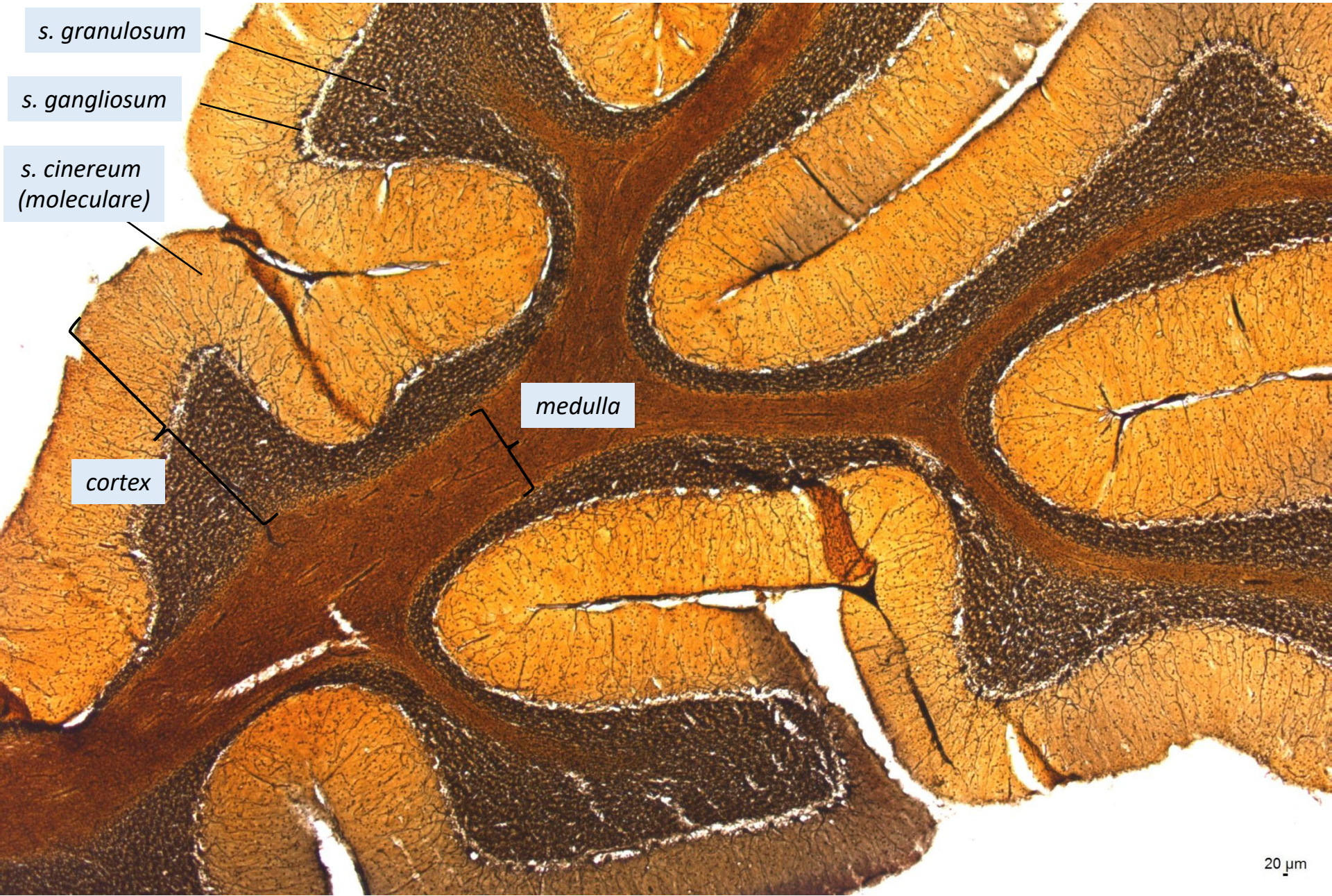
inner Baillarger

Meynert

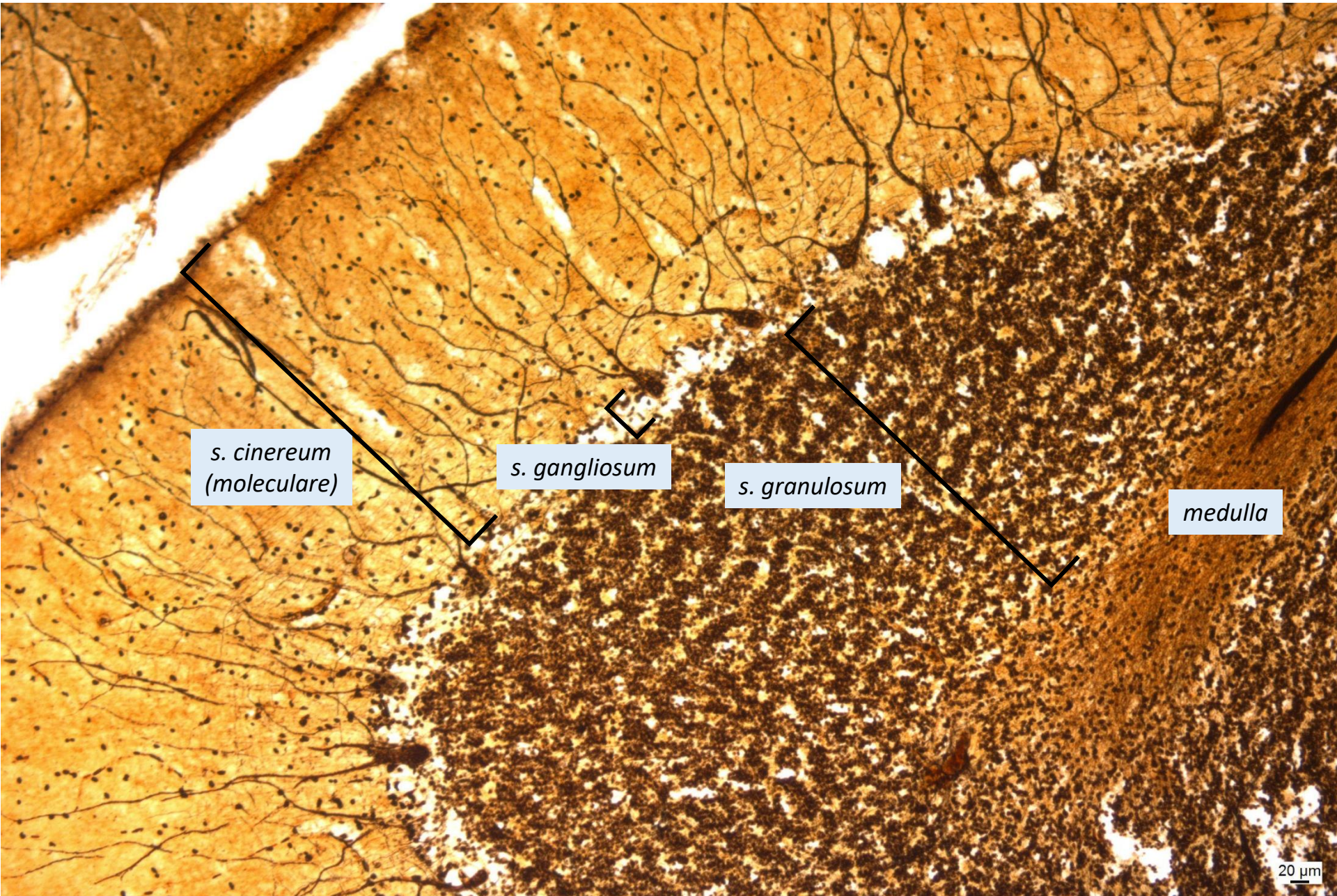
Lamina ganglionaris (pyramidalis interna) – large pyramidal neurons



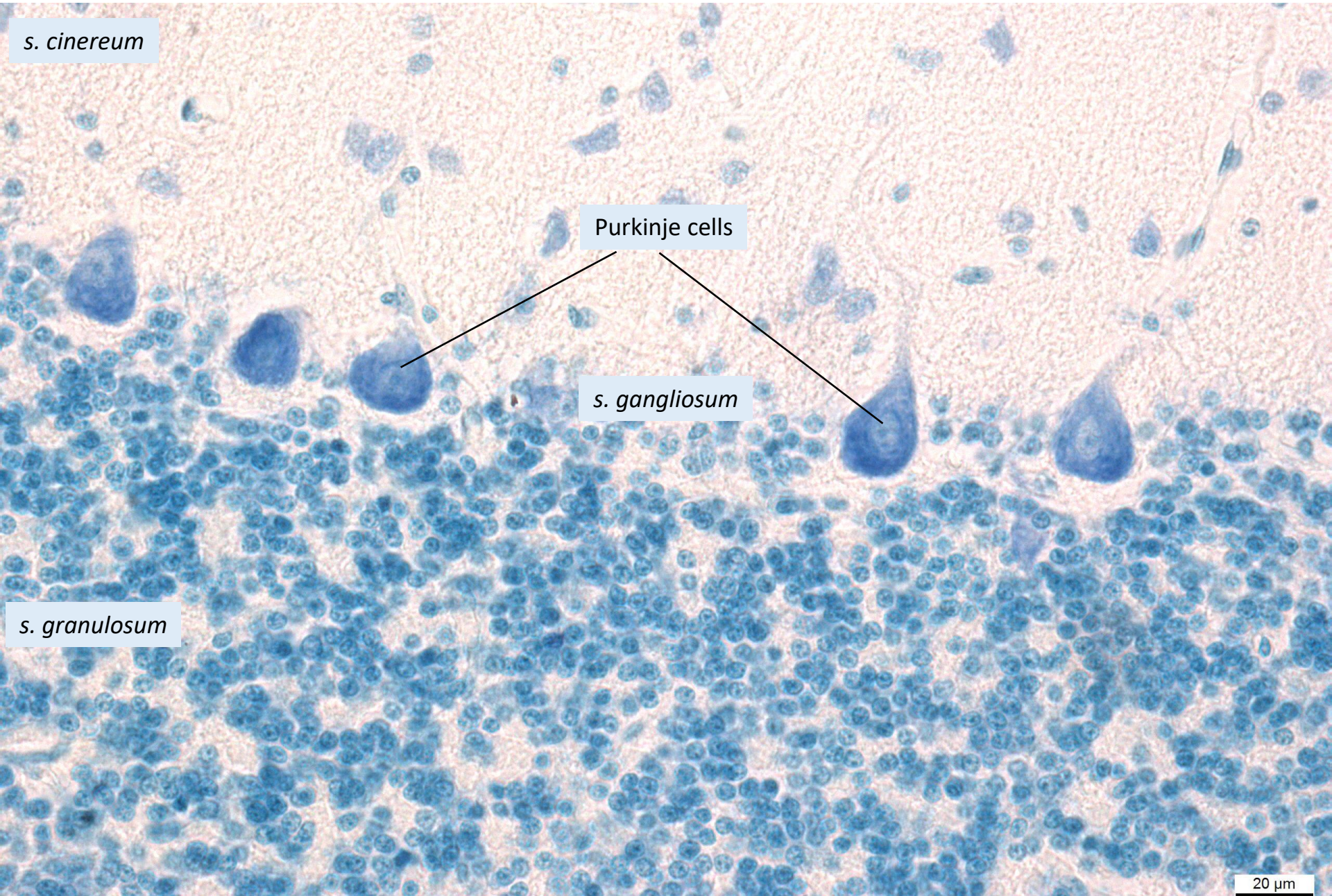
Cerebellum



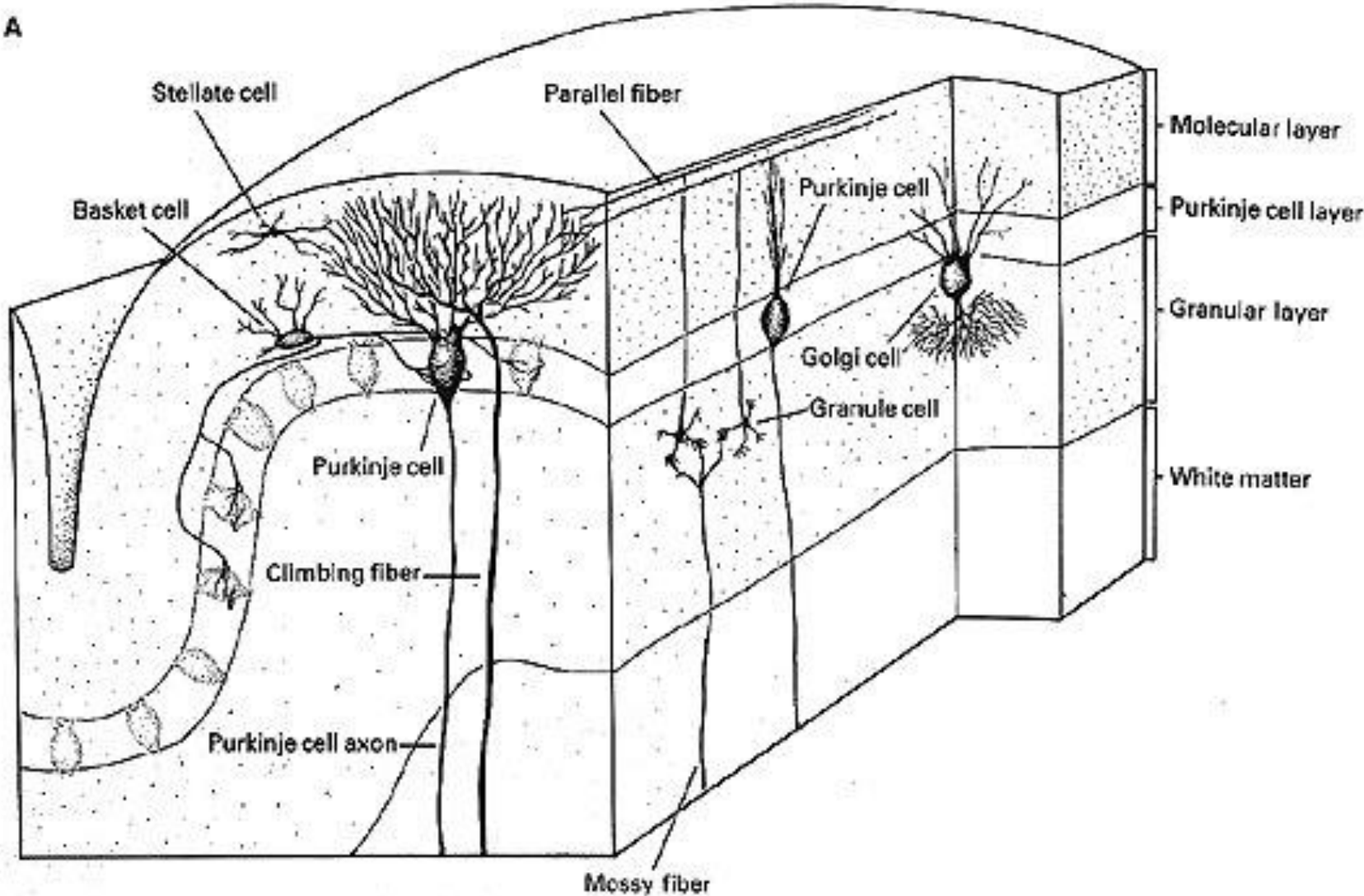
Cerebellar cortex



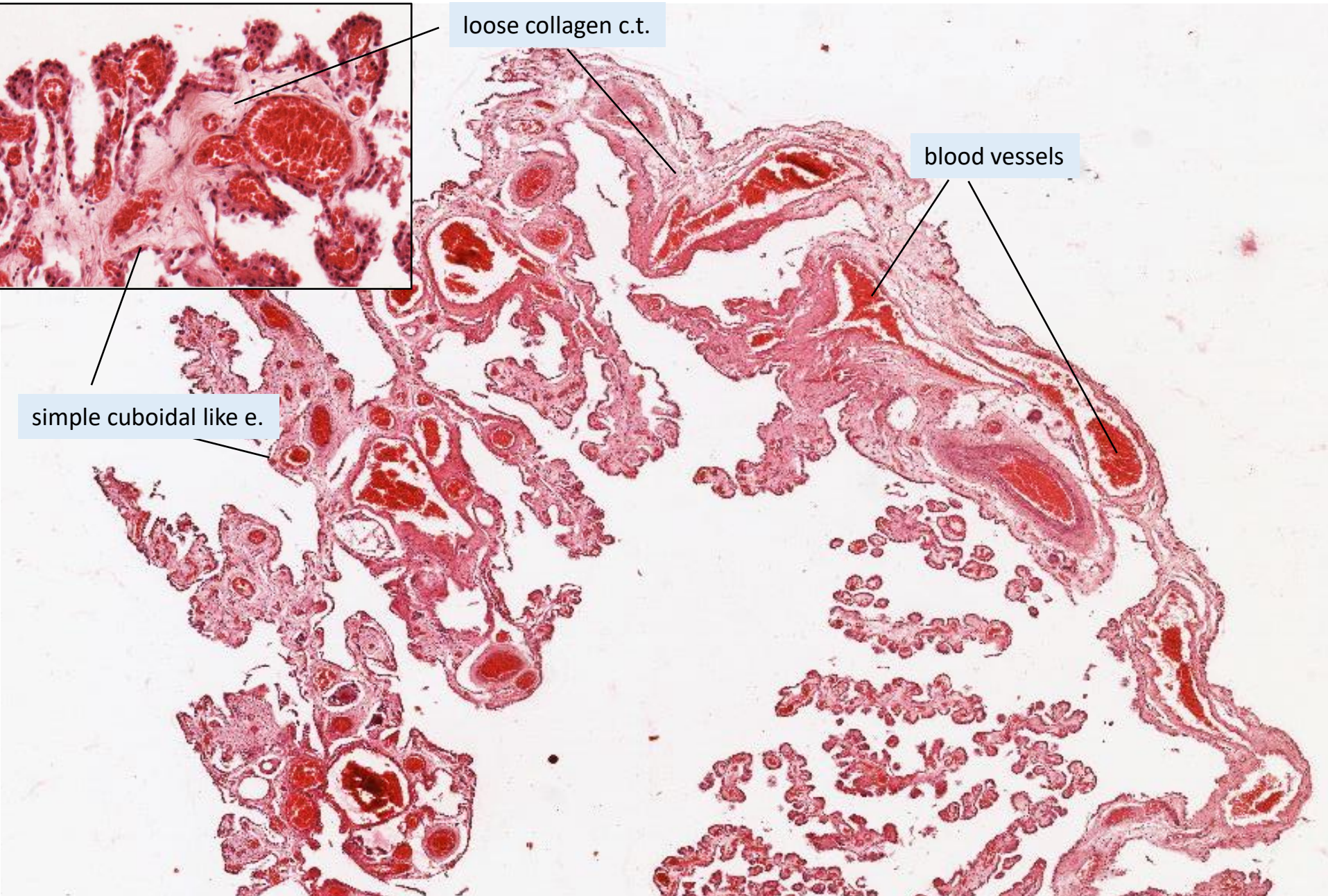
Cerebellar cortex – Purkinje cells



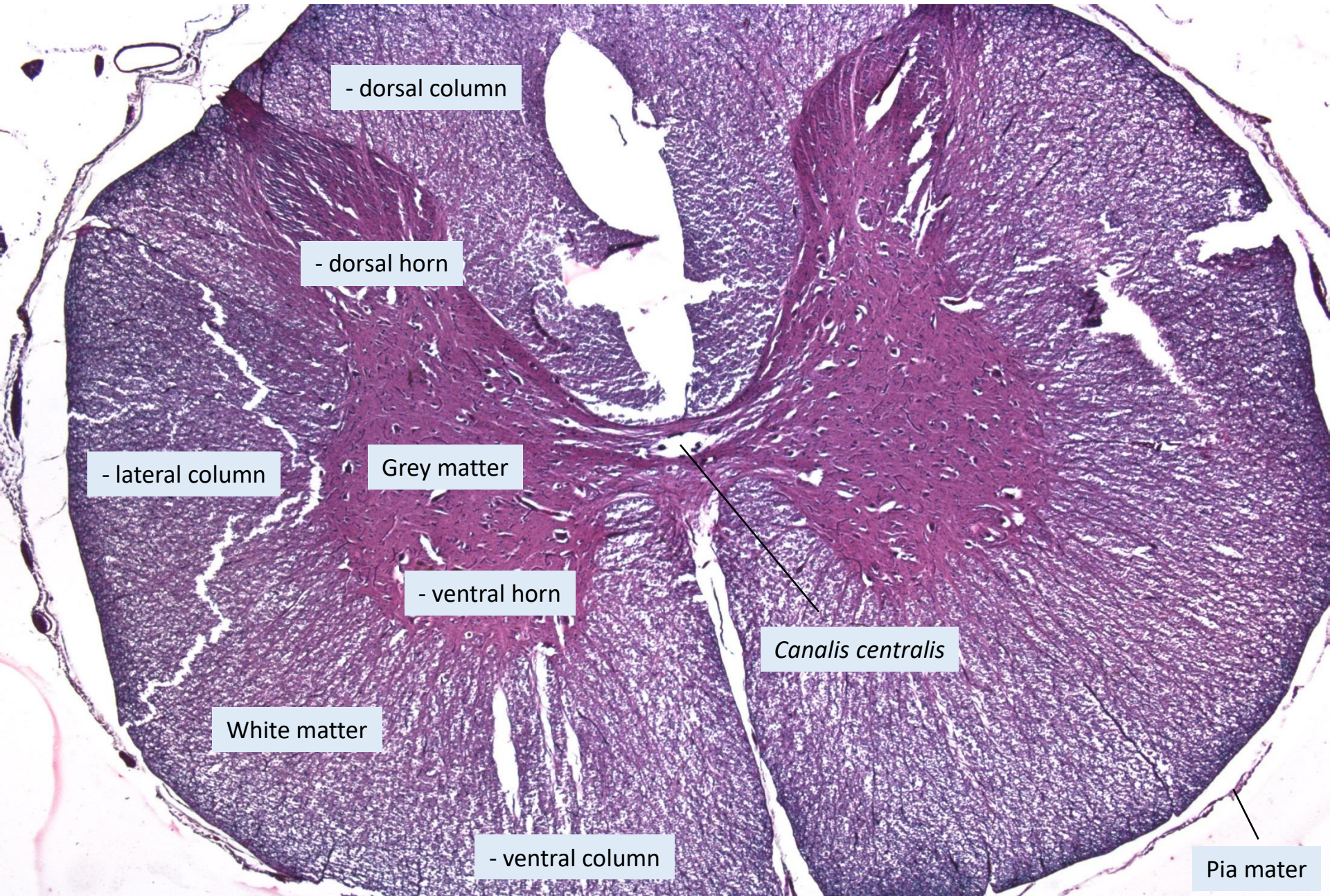
Cerebellum – neuron synapses

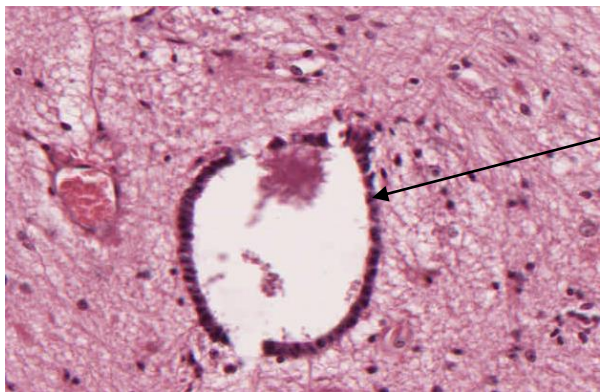


Choroid plexus



Spinal cord



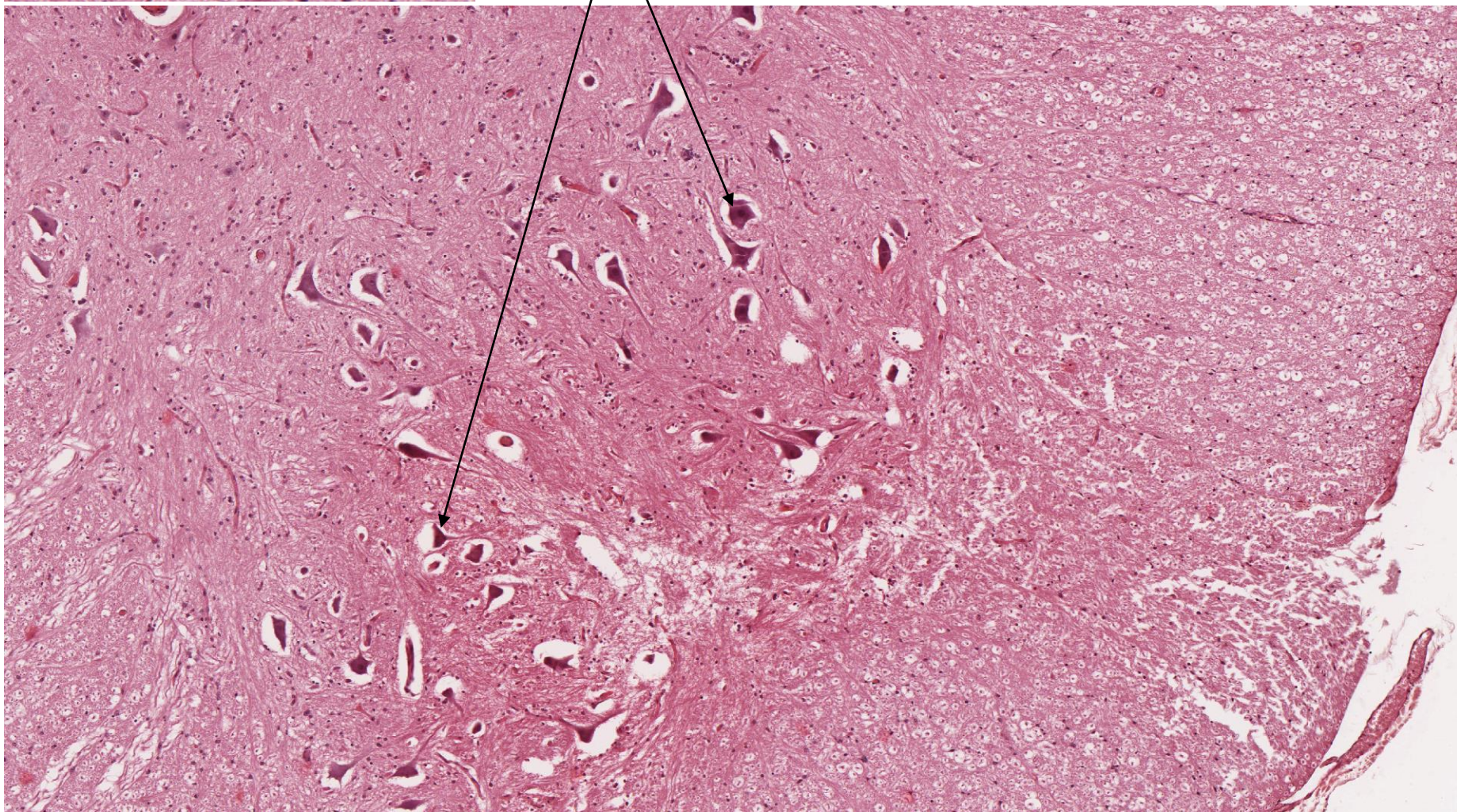


ependyma

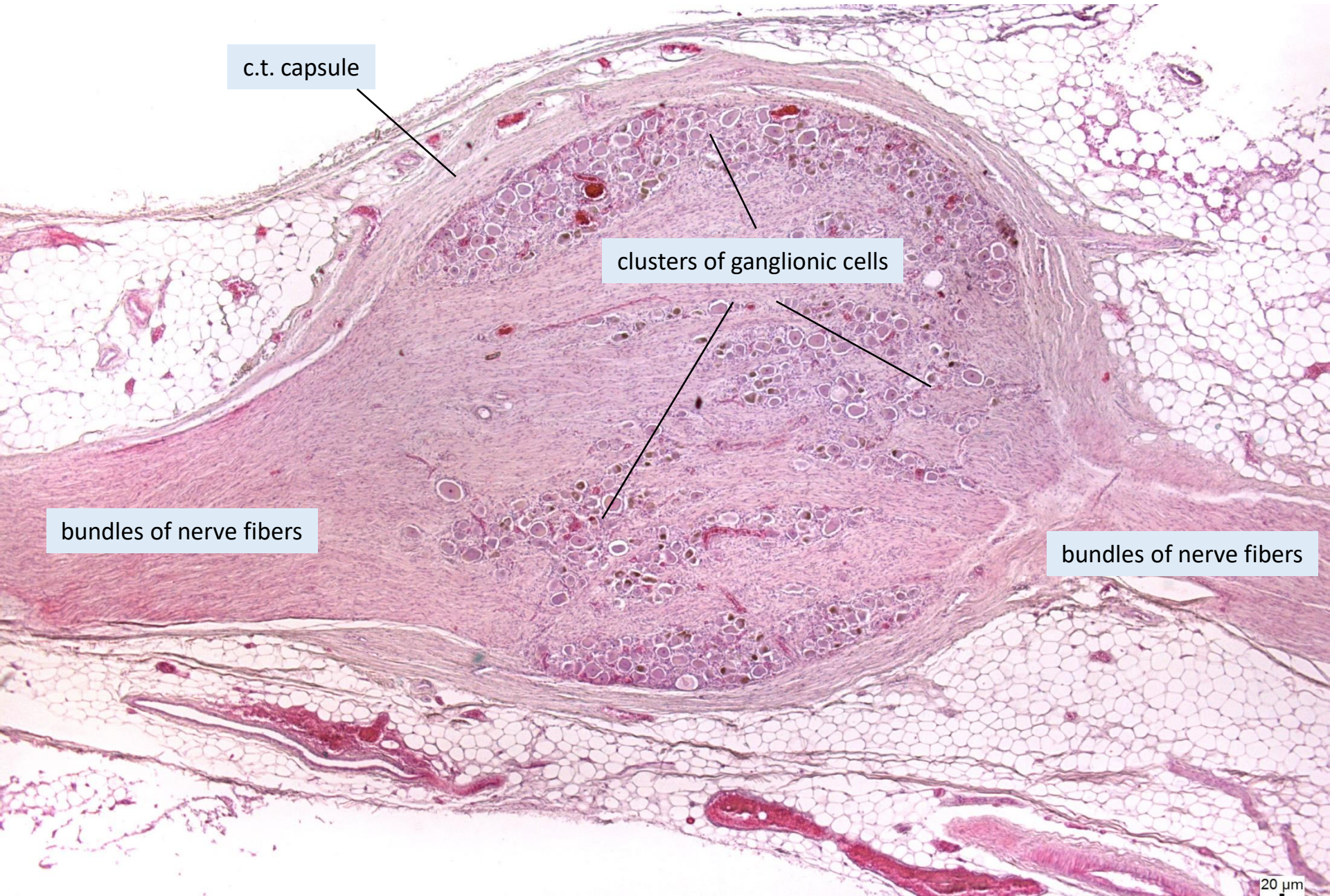
Spinal cord

motor neurons

white matter



Spinal ganglion



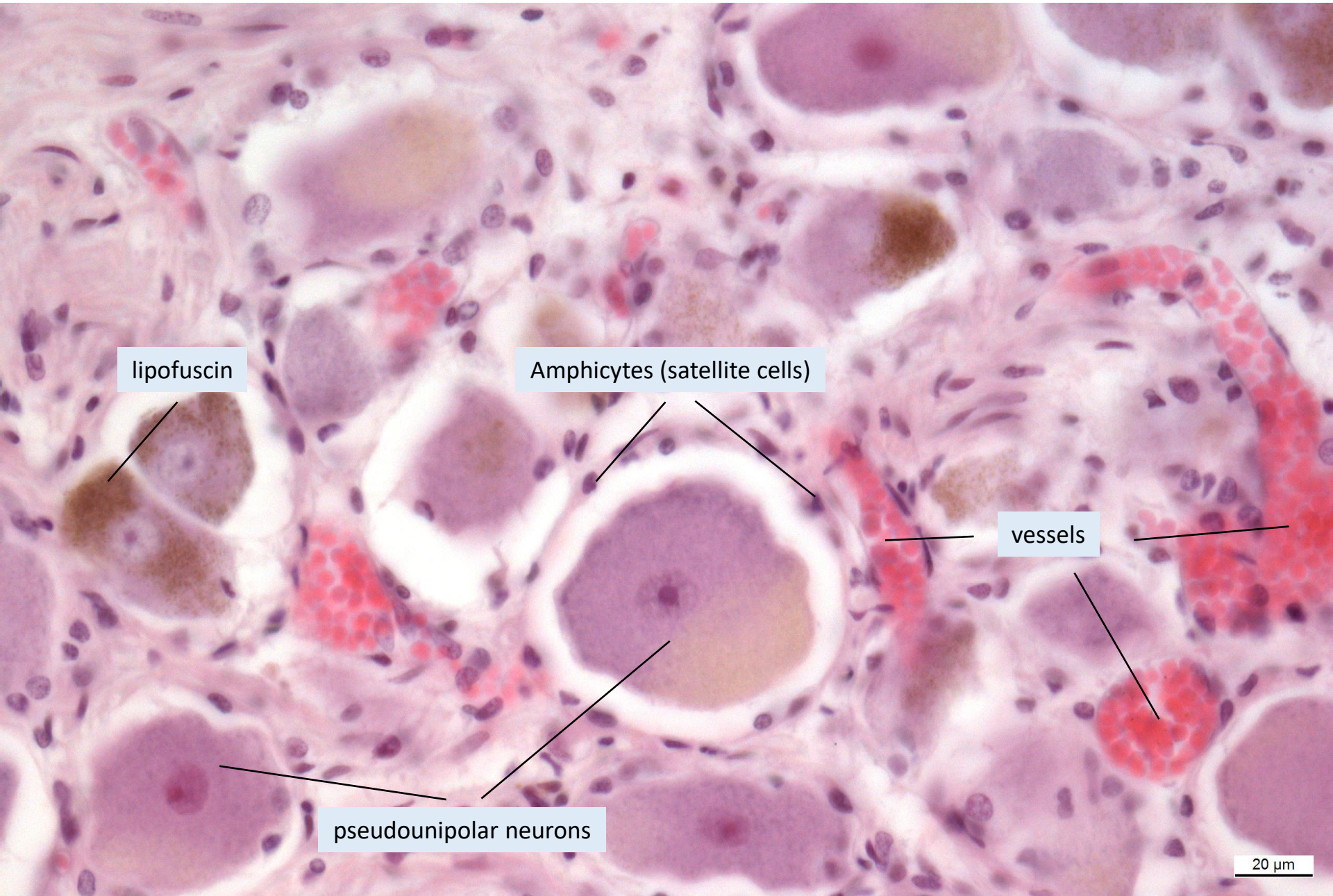
c.t. capsule

clusters of ganglionic cells

bundles of nerve fibers

bundles of nerve fibers

Spinal ganglion



lipofuscin

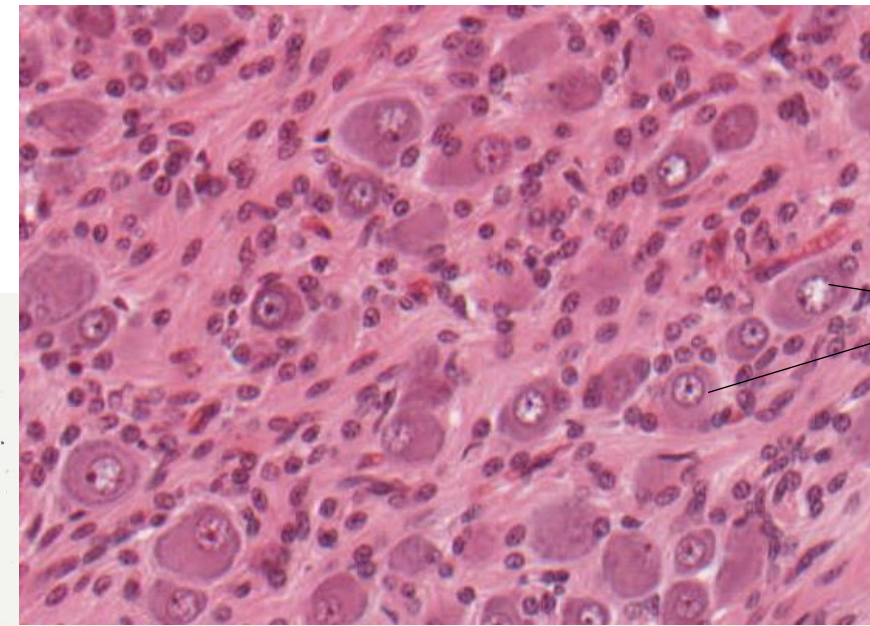
Amphicytes (satellite cells)

vessels

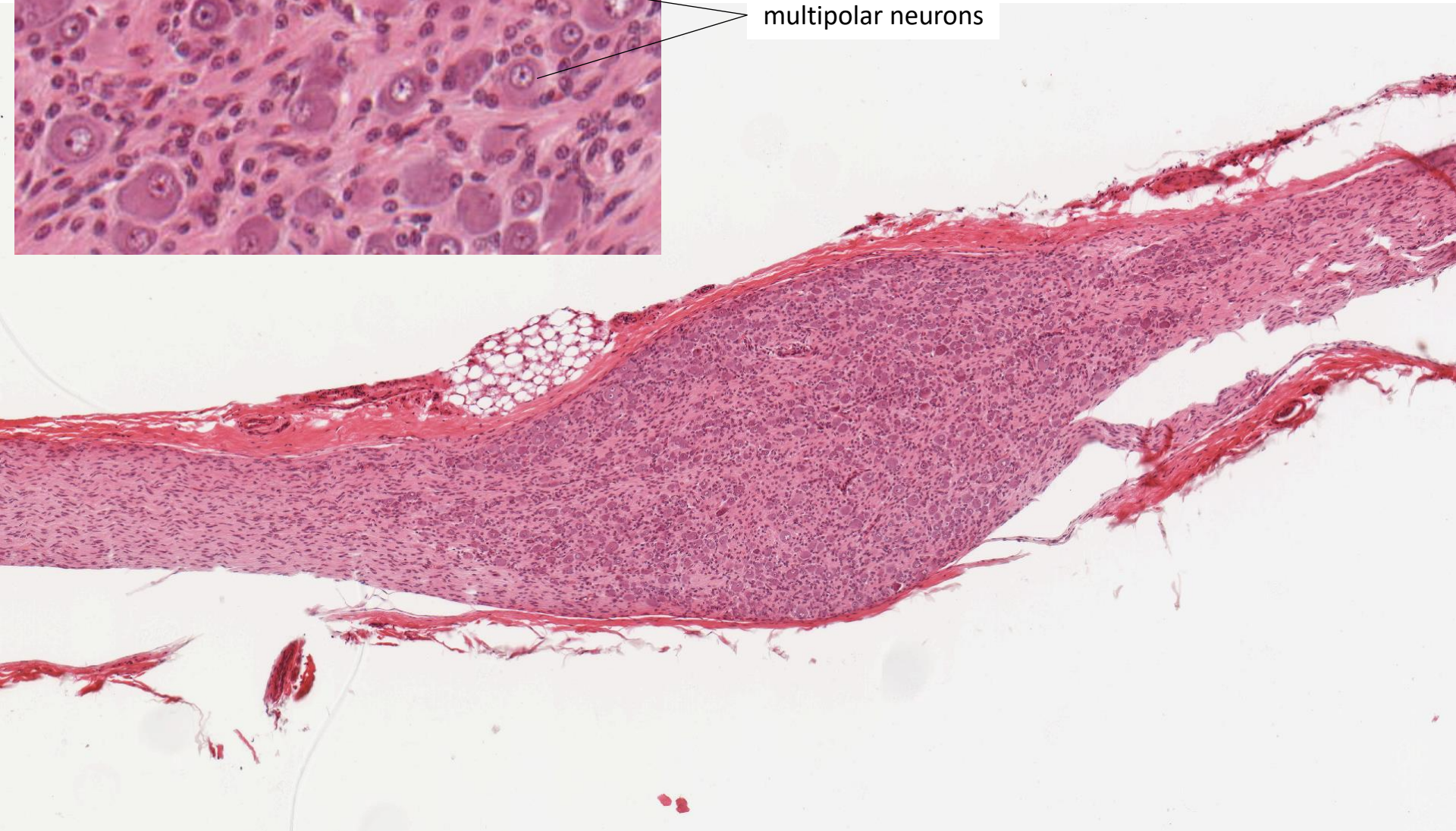
pseudounipolar neurons

20 μ m

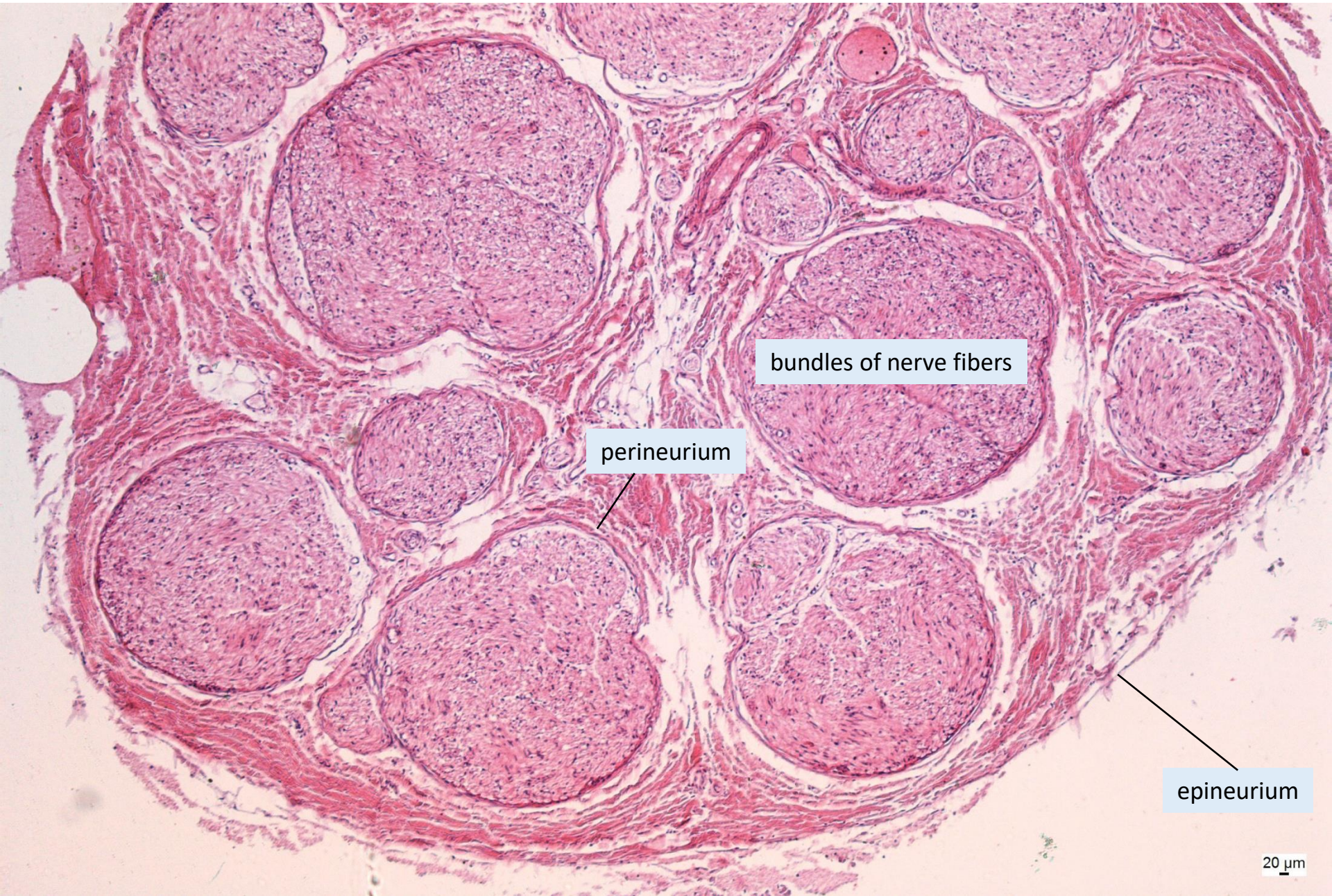
Autonomic ganglion



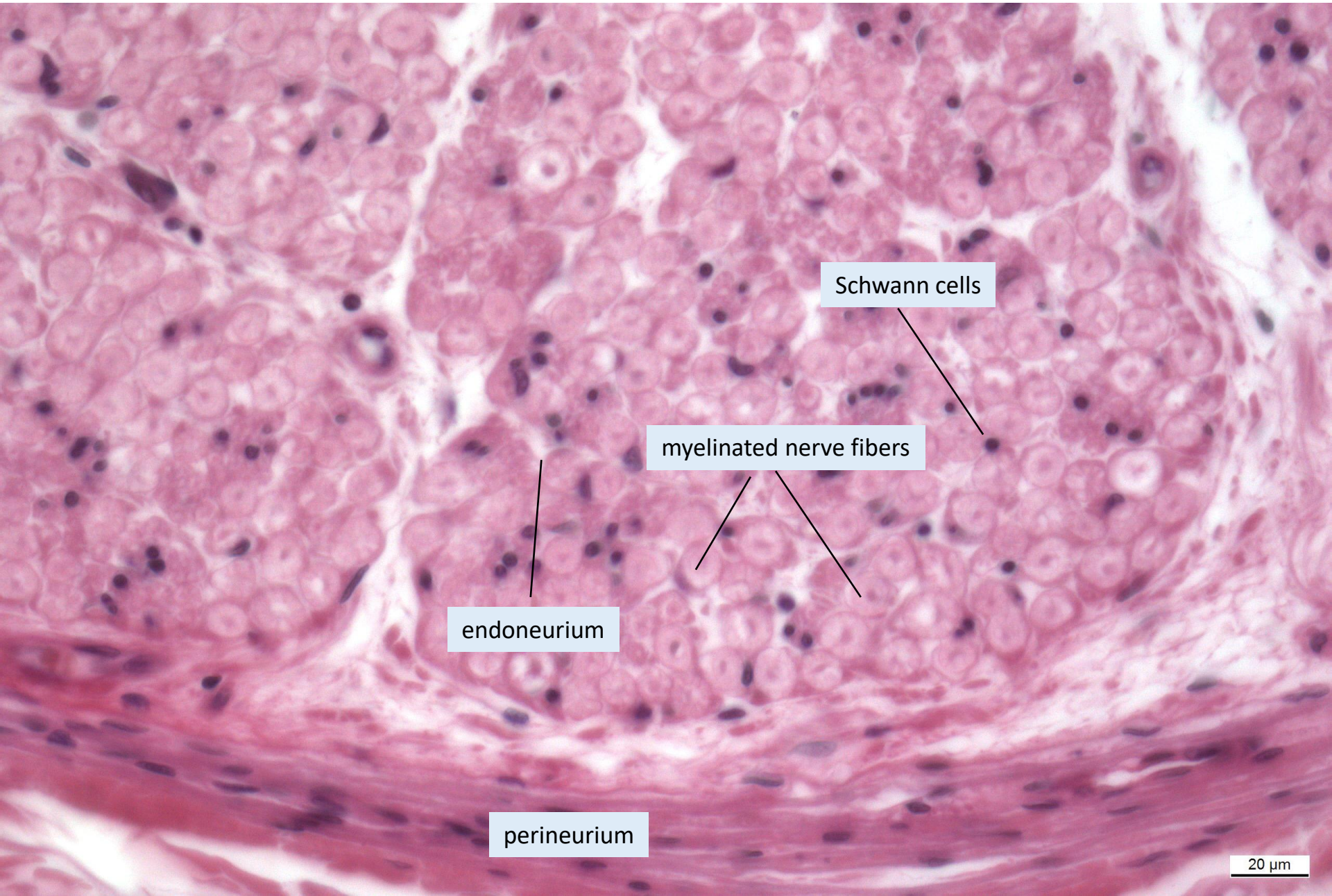
multipolar neurons



Peripheral nerve



Peripheral nerve



Schwann cells

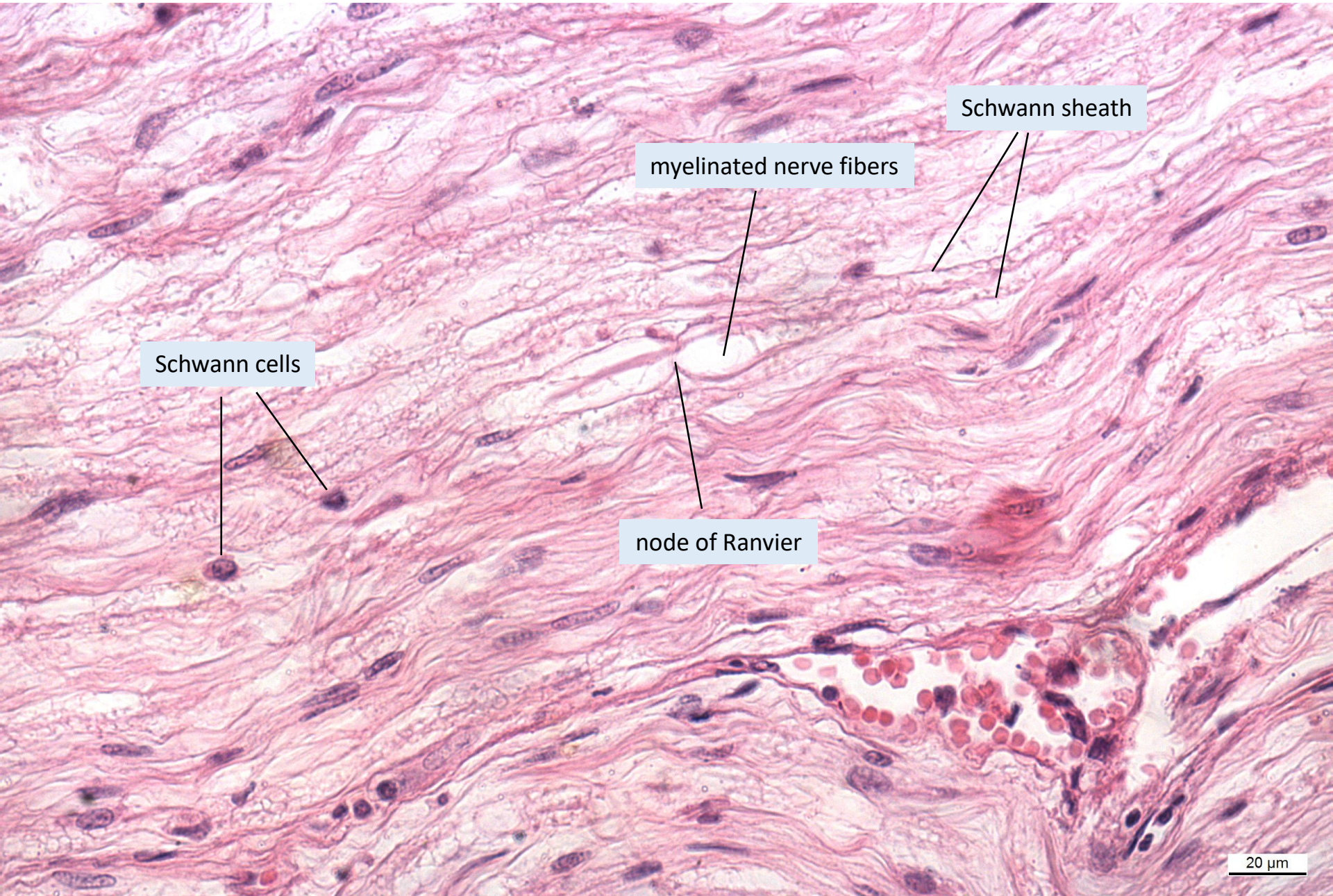
myelinated nerve fibers

endoneurium

perineurium

20 μ m

Peripheral nerve



Schwann cells

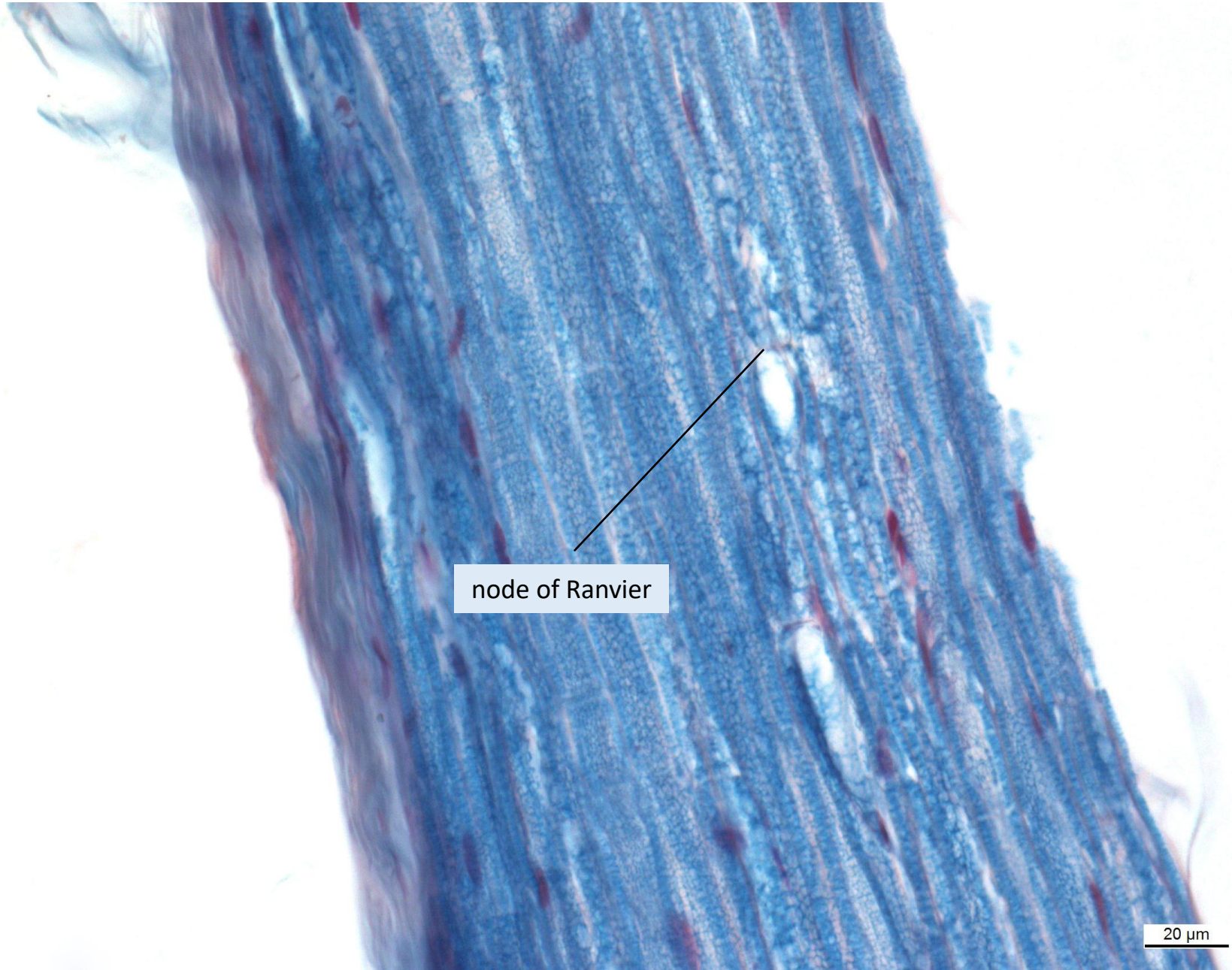
myelinated nerve fibers

Schwann sheath

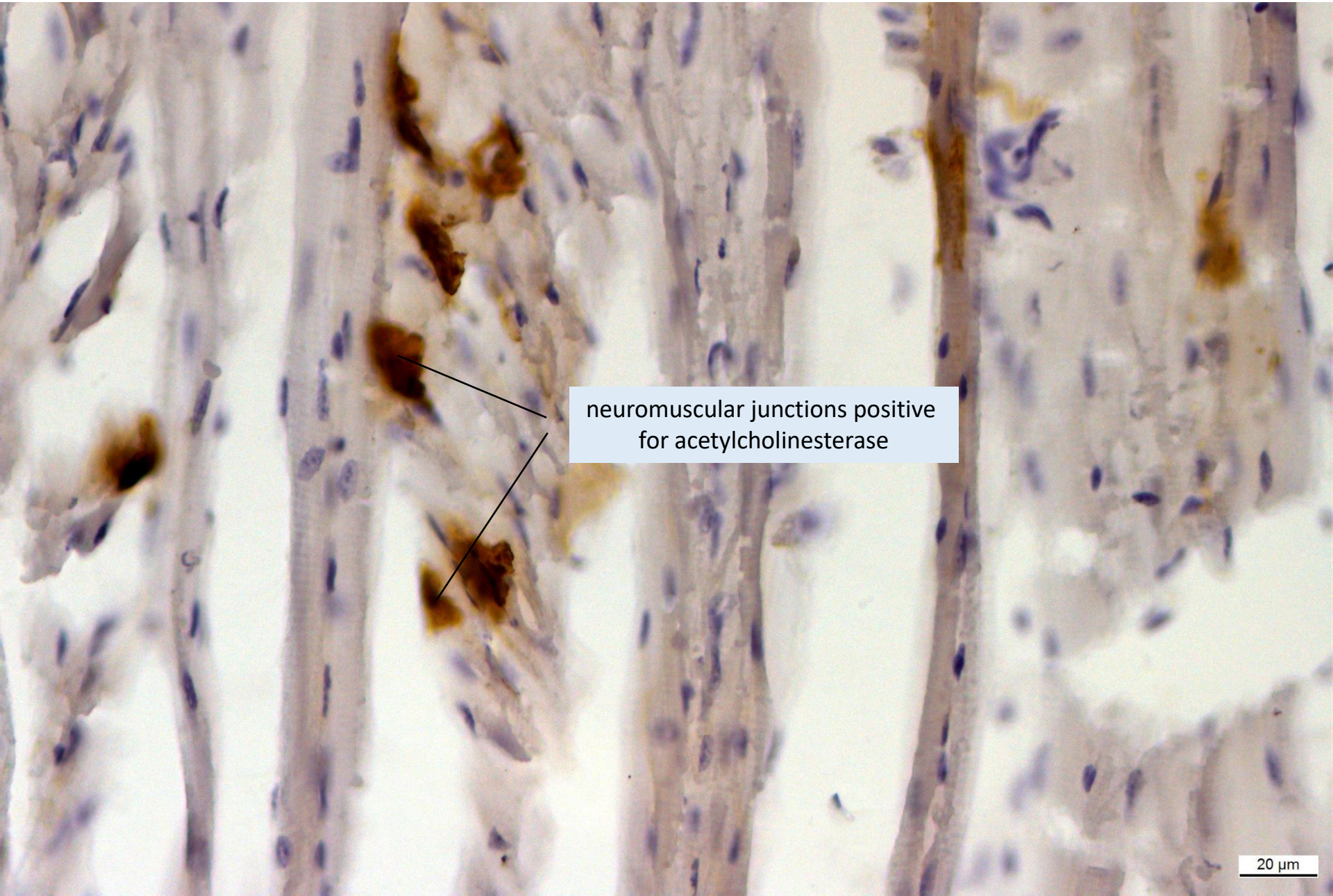
node of Ranvier

20 μ m

Peripheral nerve



Neuromuscular junction

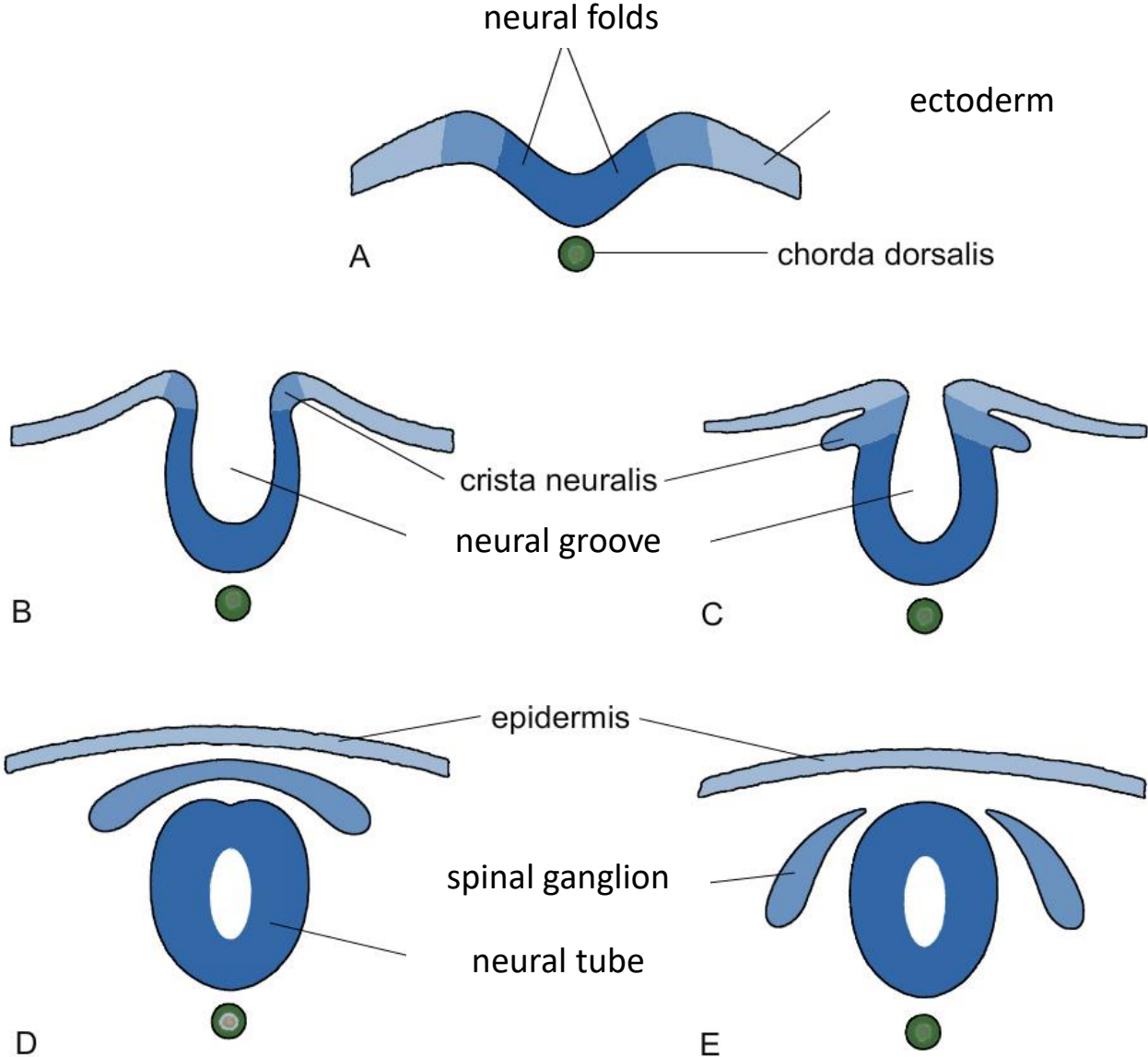


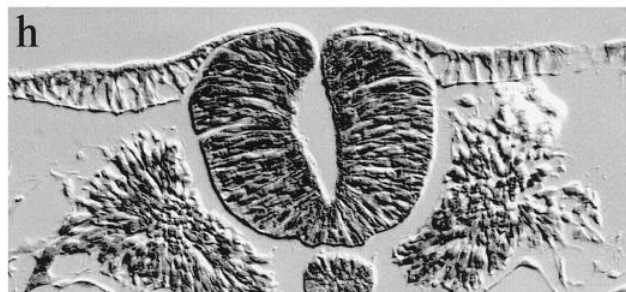
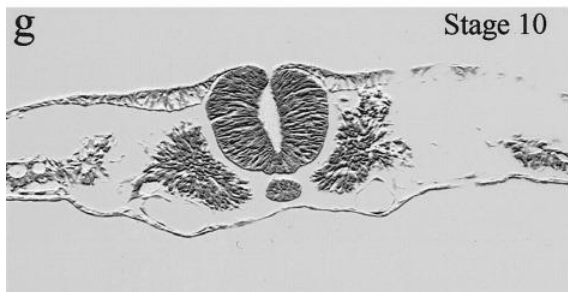
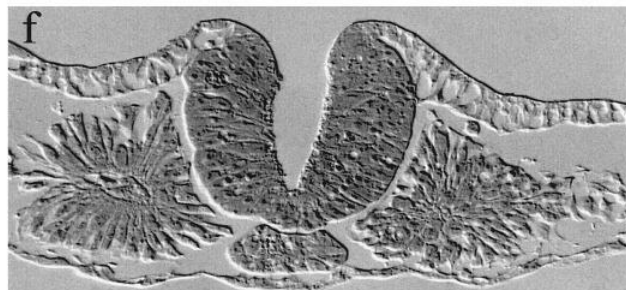
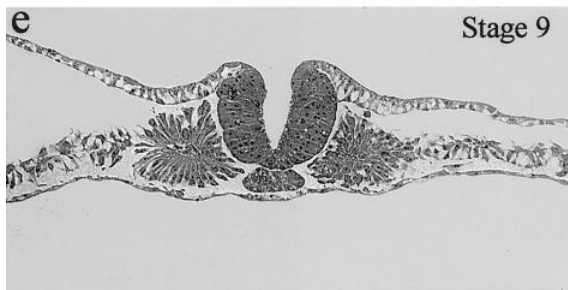
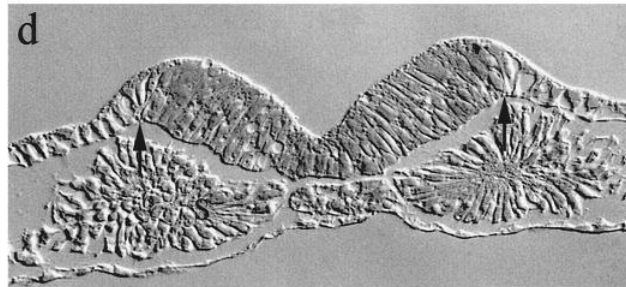
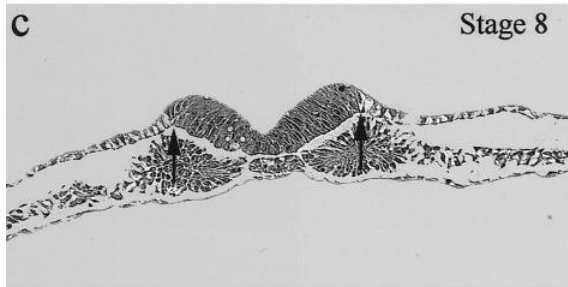
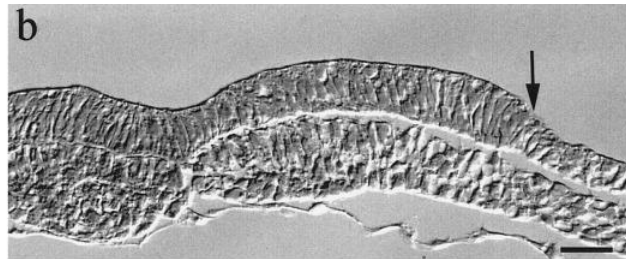
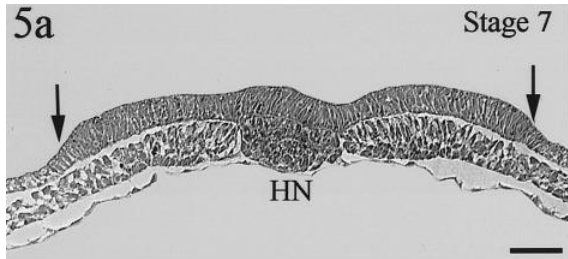
neuromuscular junctions positive
for acetylcholinesterase

List of slides

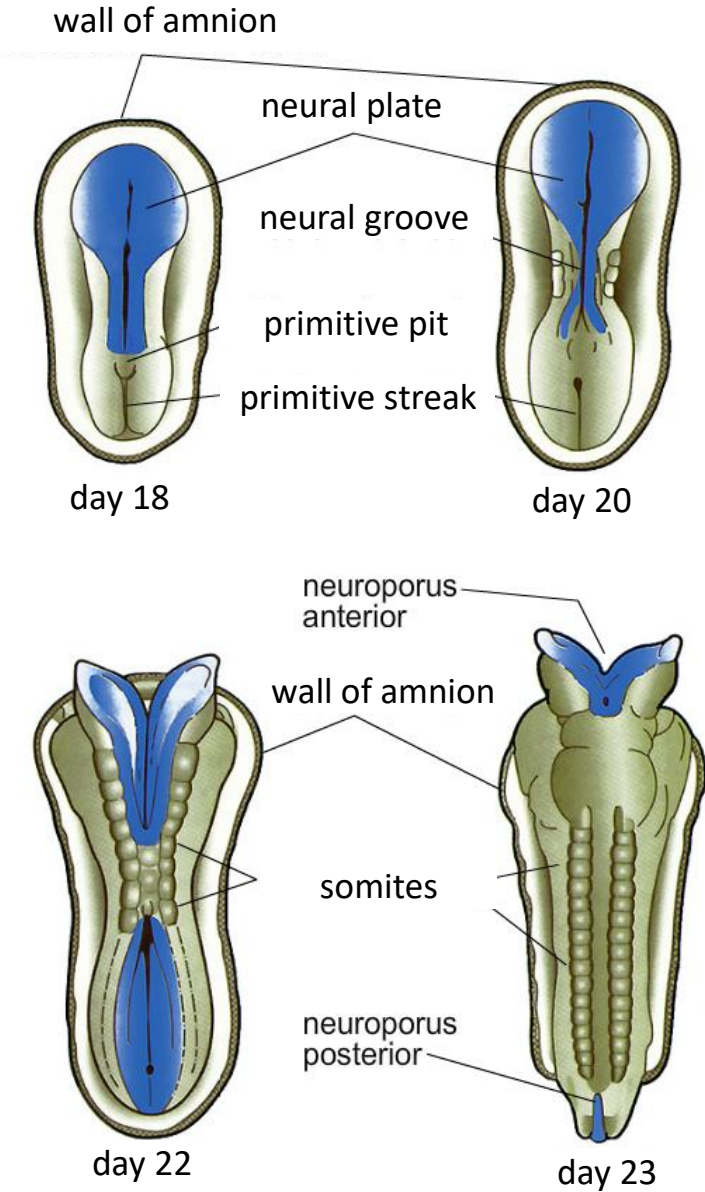
- 75. *Cortex cerebri*
- 76. *Cortex cerebri* (impregnation)
- 77. *Cerebellum* (impregnation)
- 78. *Cerebellum* (Nissl substance)
- 79. *Medulla spinalis*
- 80. *Plexus choroideus*
- 81. *Ganglion spinale*
- 82. *Ganglion spinale* (impregnation)
- 83. *Ganglion autonomic*
- 84. Peripheral nerve – cross section
- 85. Peripheral nerve – cross section (myelin)
- 86. Peripheral nerve – longitudinal section
- 87. Peripheral nerve – longitudinal section (myelin)

Development of neural tube

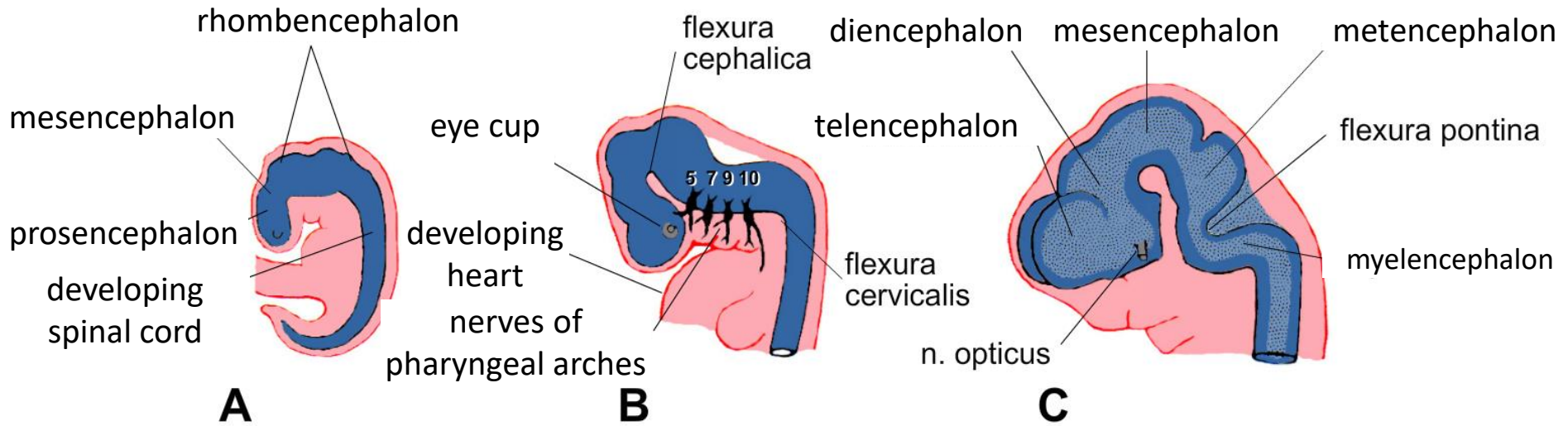




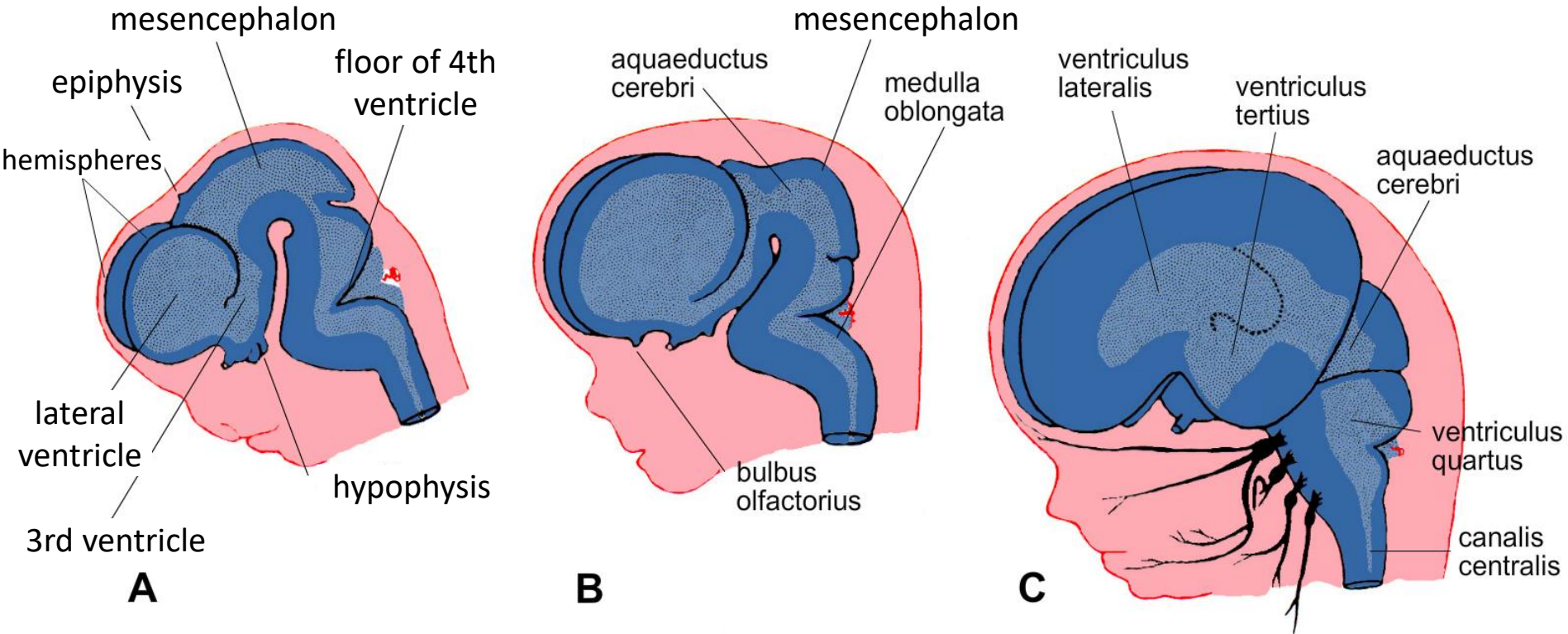
Closing of neural tube



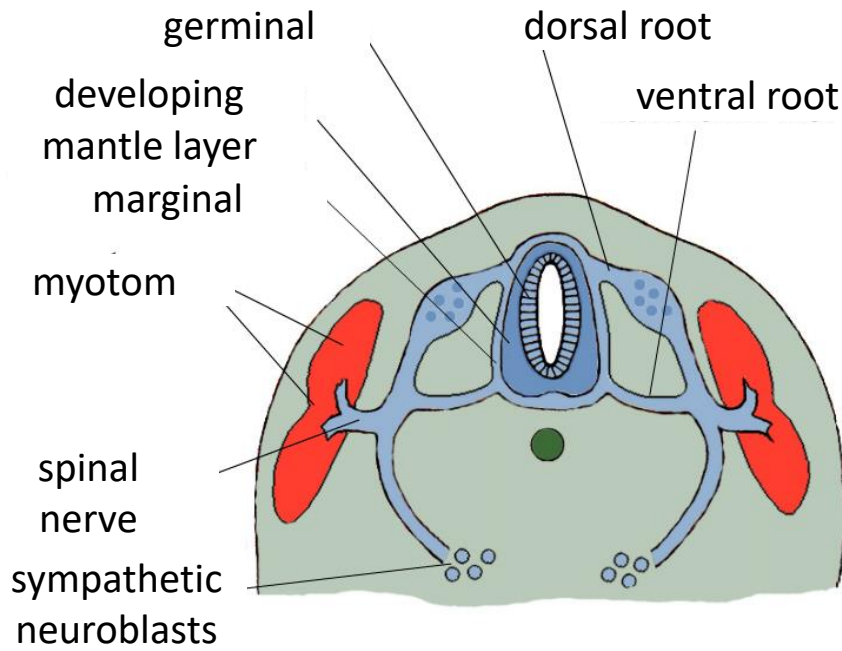
Development of brain



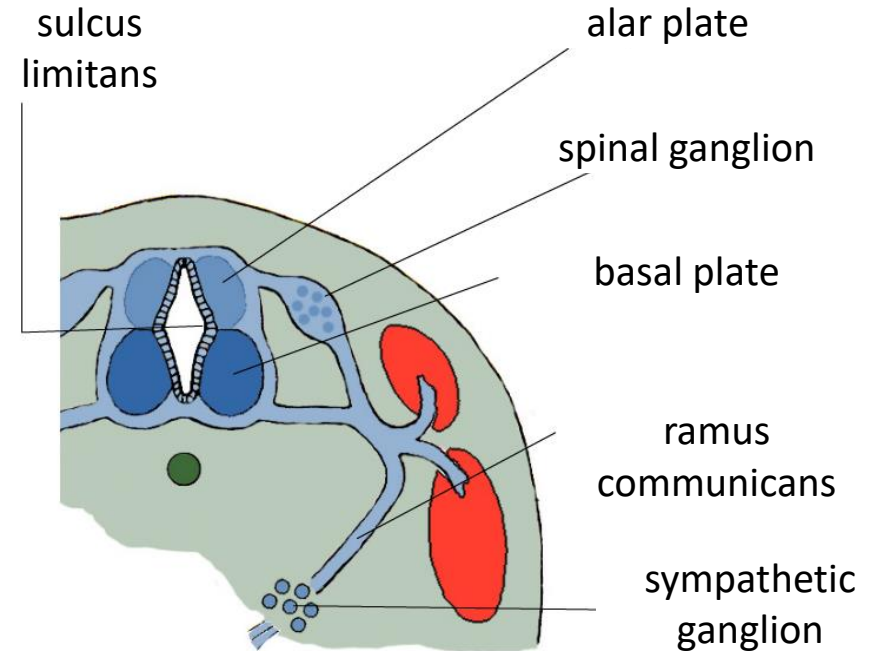
Development of brain



Development of spinal cord



A



B