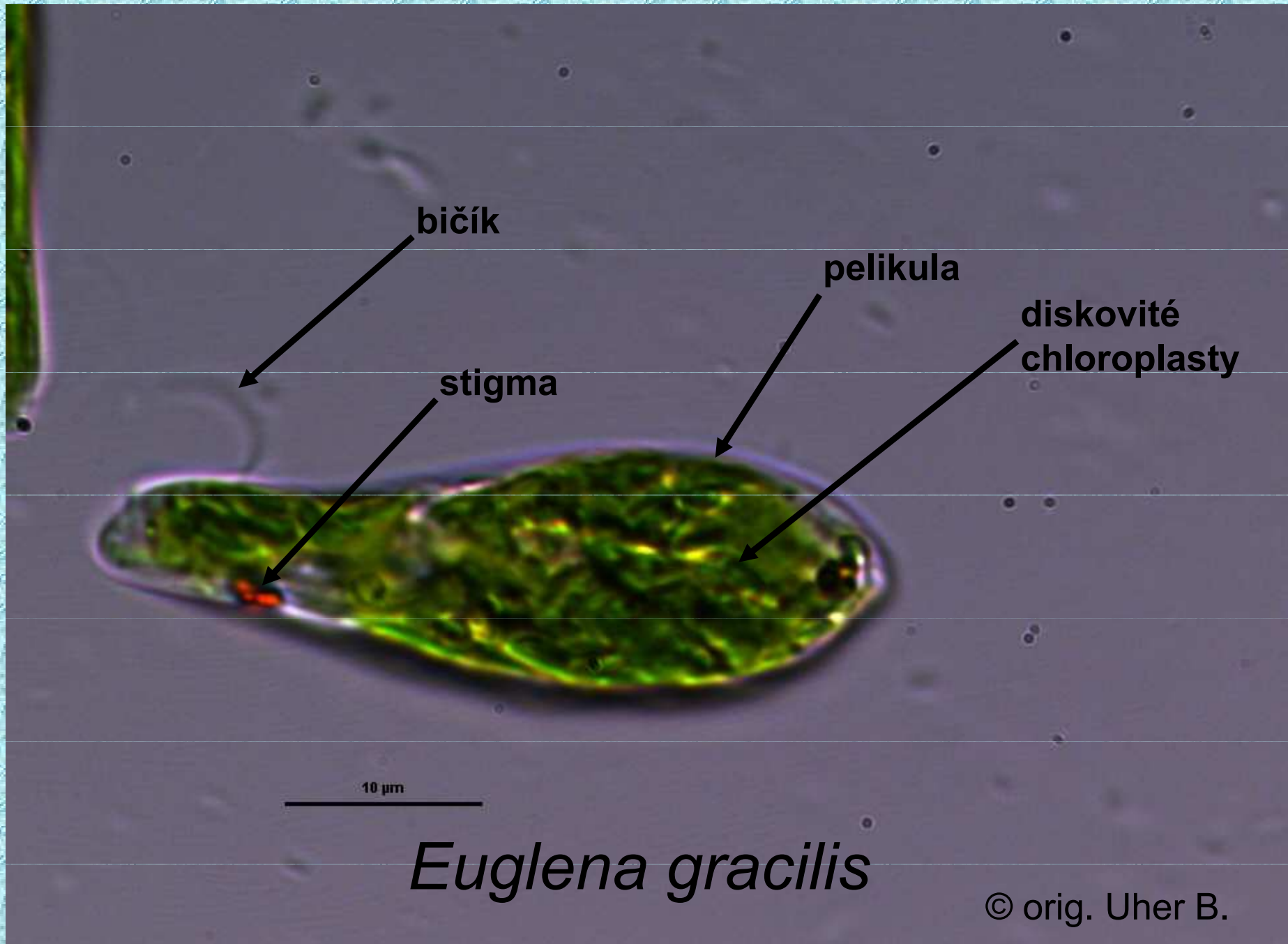


CVIČENÍ 02

ŘASY

Euglenophyta, Dinophyta,
Heterokontophyta & Rhodophyta

Odd.: Euglenophyta Třída: Euglenophyceae Řád: Euglenales



bičík

pelikula

diskovité
chloroplasty

stigma

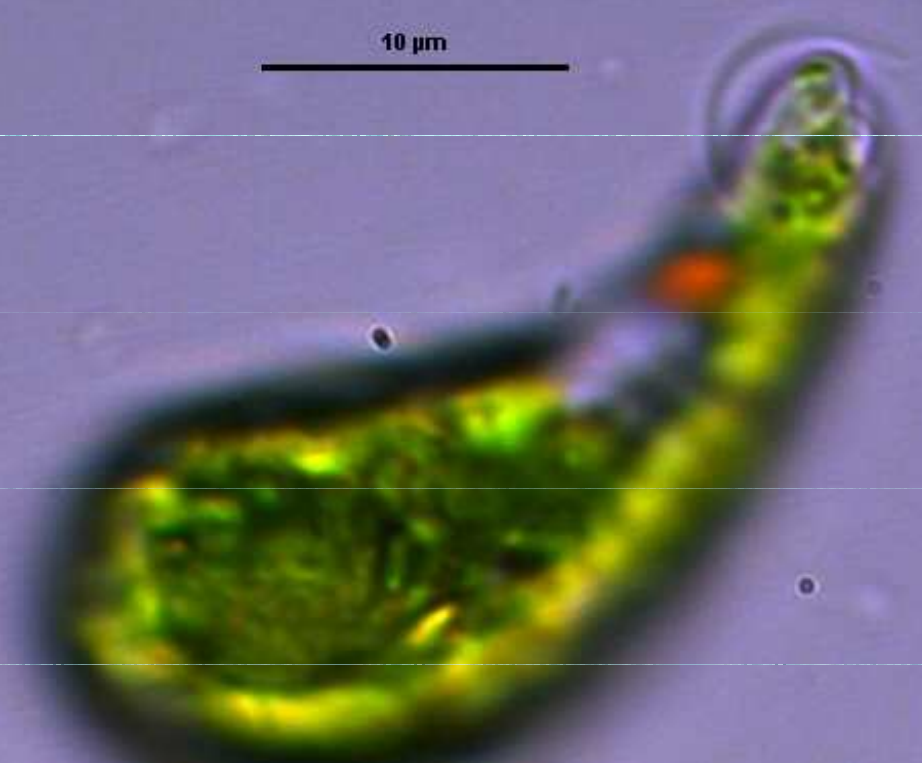
10 µm

Euglena gracilis

© orig. Uher B.

Euglena gracilis

10 μm



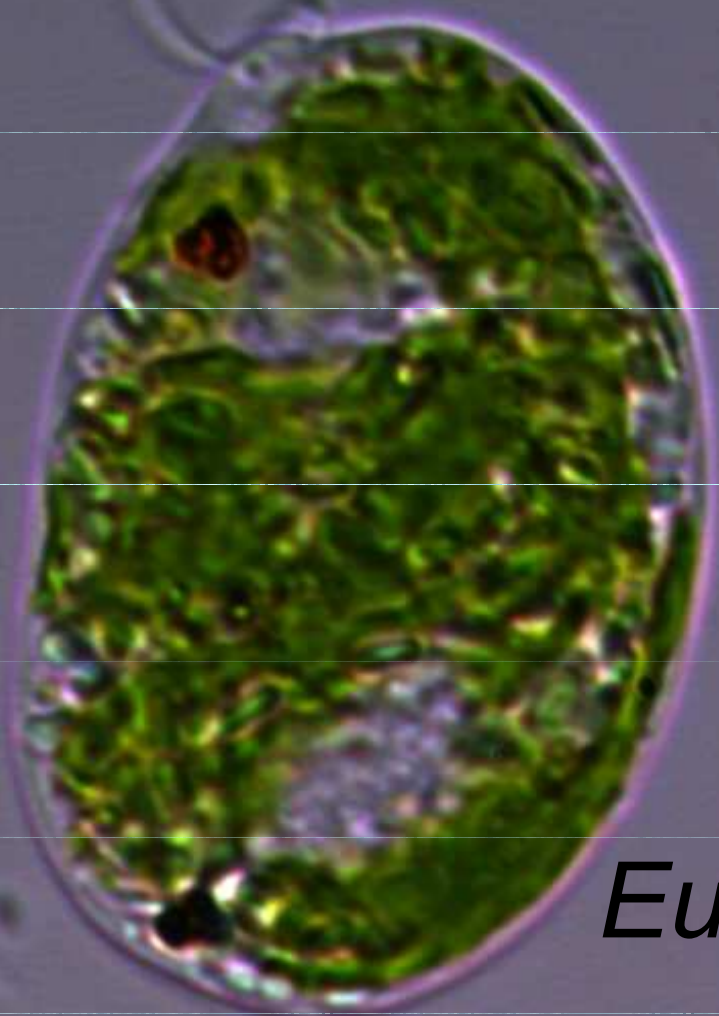
© orig. Uher B.

A light micrograph of a single Euglena gracilis cell. The cell is elongated and spindle-shaped, with a prominent, rounded, green chloroplast filling most of its interior. A thin, clear pellicle is visible around the cell. At the anterior end, there is a small, dark, pointed structure, likely the flagellar pocket. A horizontal scale bar is located to the left of the cell, labeled "10 μm". The background is a uniform, light gray color.

10 μm

Euglena gracilis

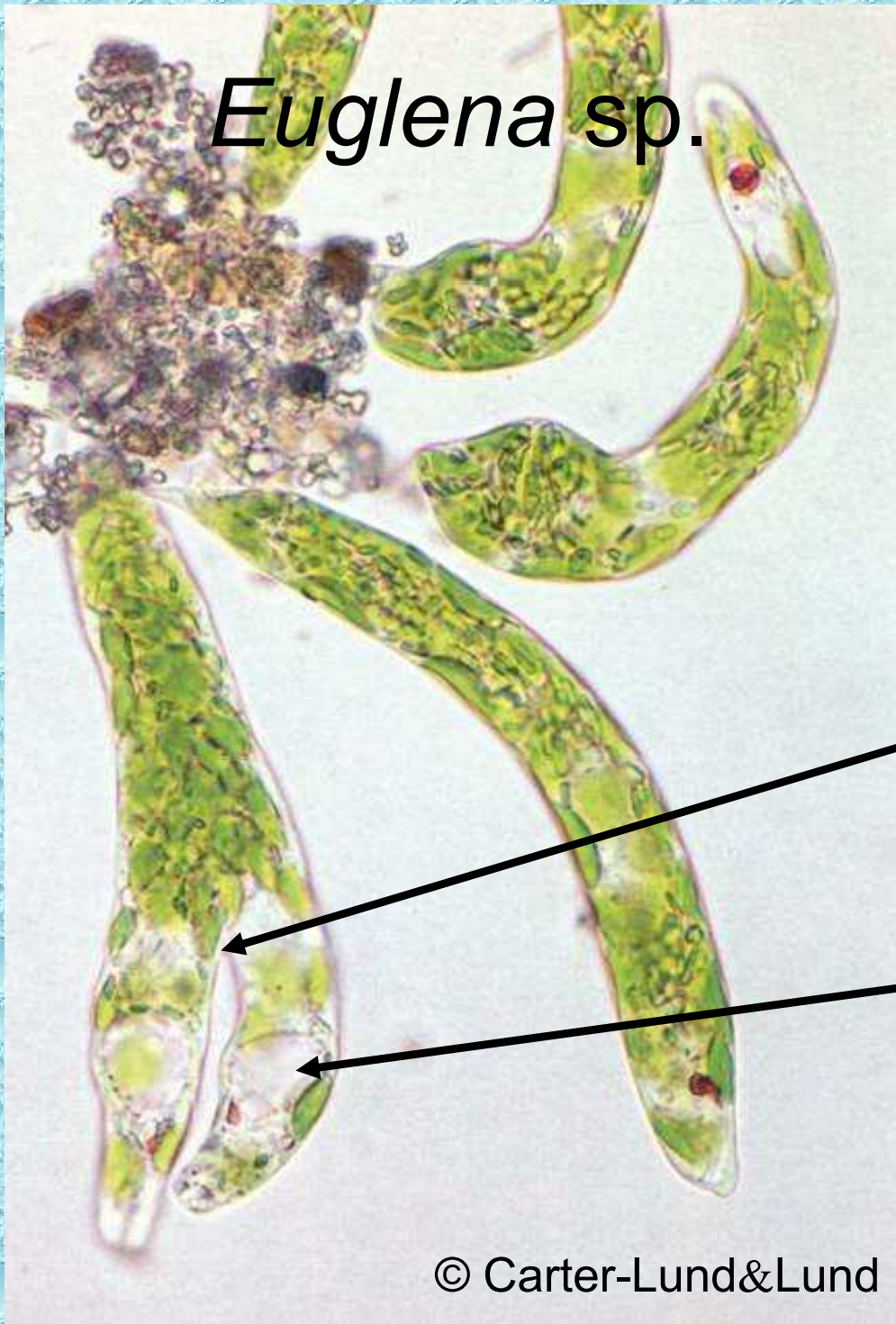
© orig. Uher B.



Euglena gracilis

© orig. Uher B.

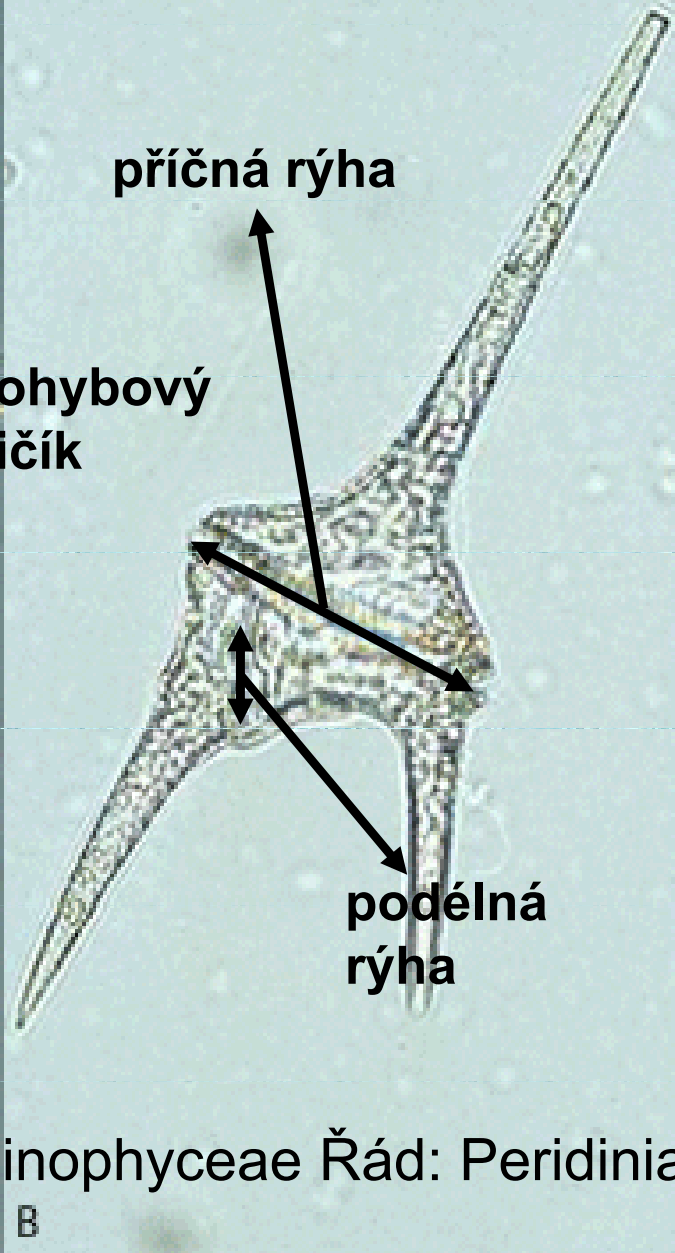
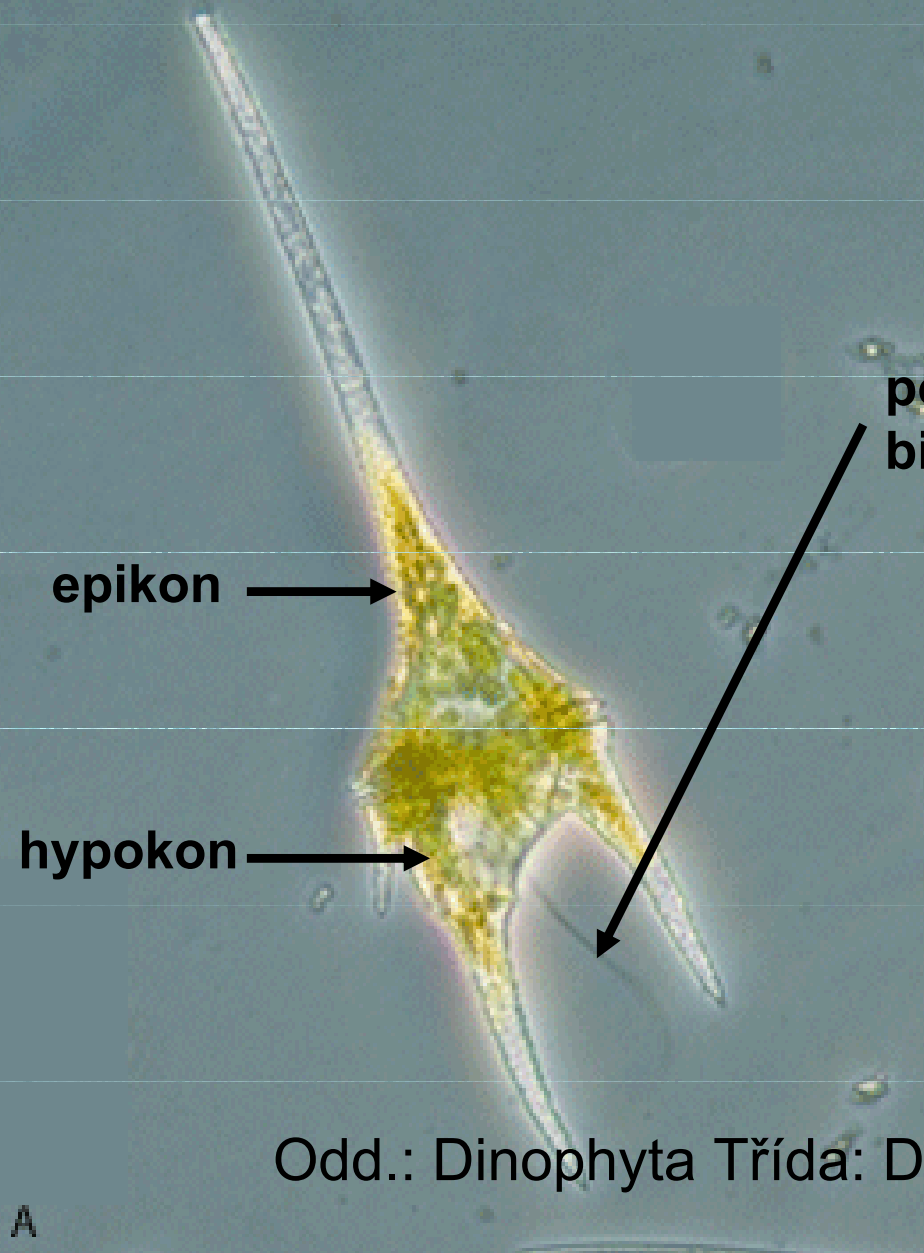
Euglena sp.



podélní dělení
(schizotomie)

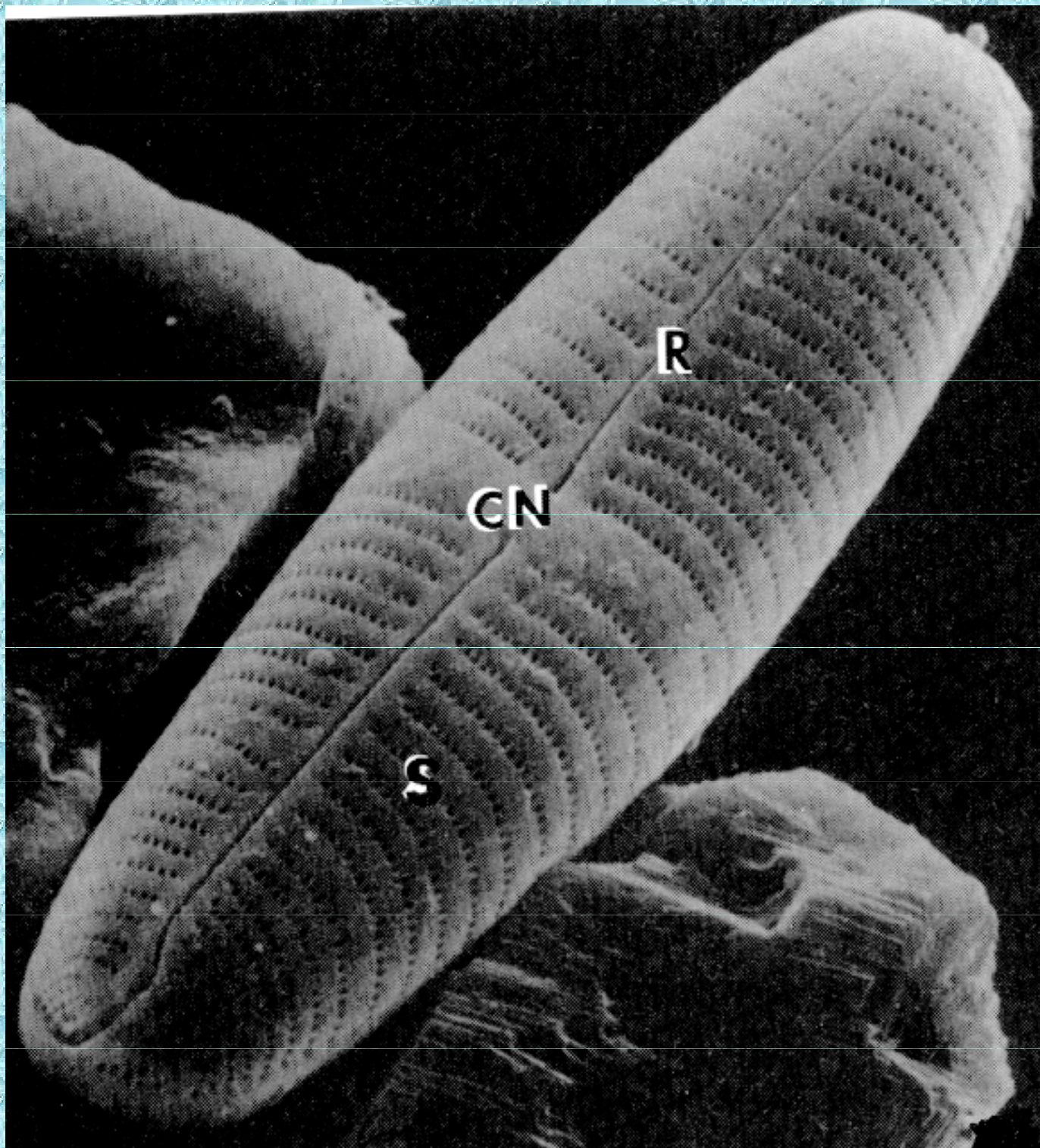
ampula

Ceratium



Odd.: Dinophyta Třída: Dinophyceae Řád: Peridinales

A after Entwisle et al. (1997)
B © N. Sugiyama, see http://protist.i.hosei.ac.jp/Protist_menuE.html
C © K. Mikami, see http://protist.i.hosei.ac.jp/Protist_menuE.html



Penátní rozsivka (SEM)

R - raphe

CN - centrální nodulus

S - striae

hypotéka

epitéka

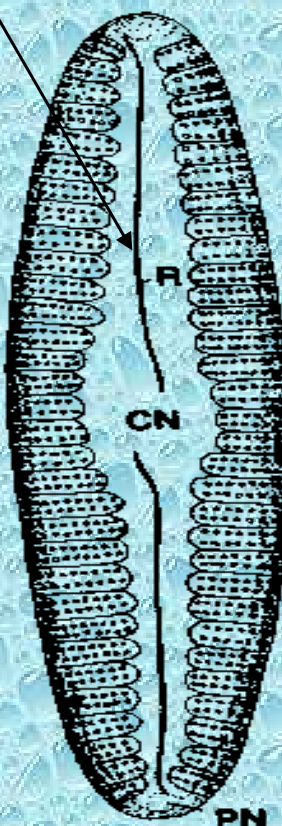
hypopleura

epipleura

epivalva

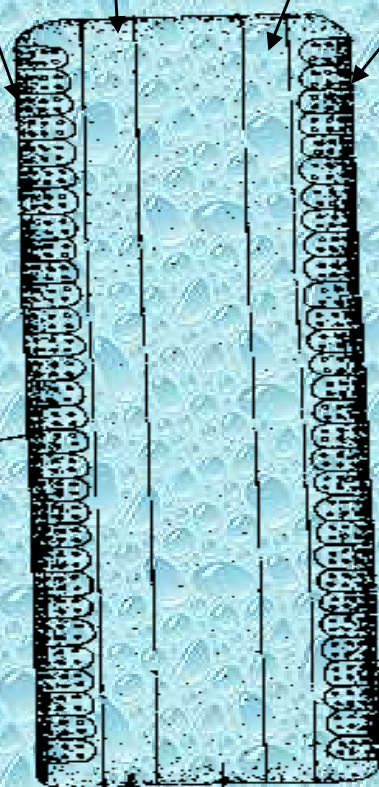
hypovalva

rafe



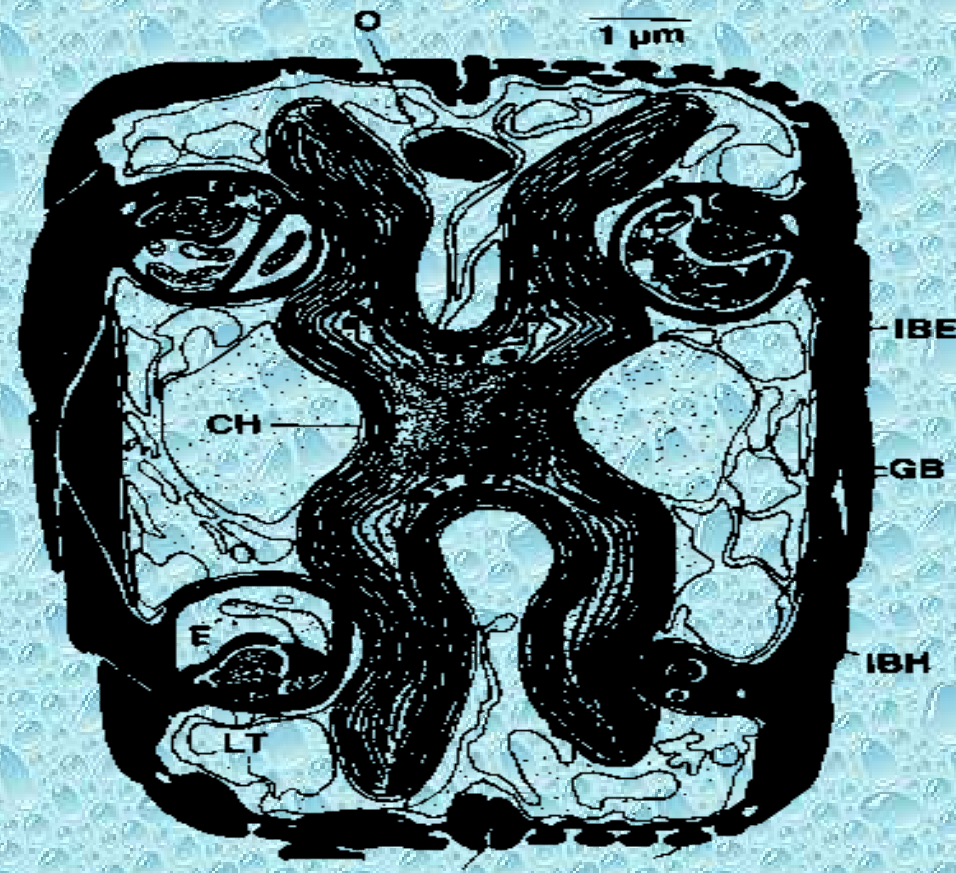
(a)

valvální
pohled



(b)

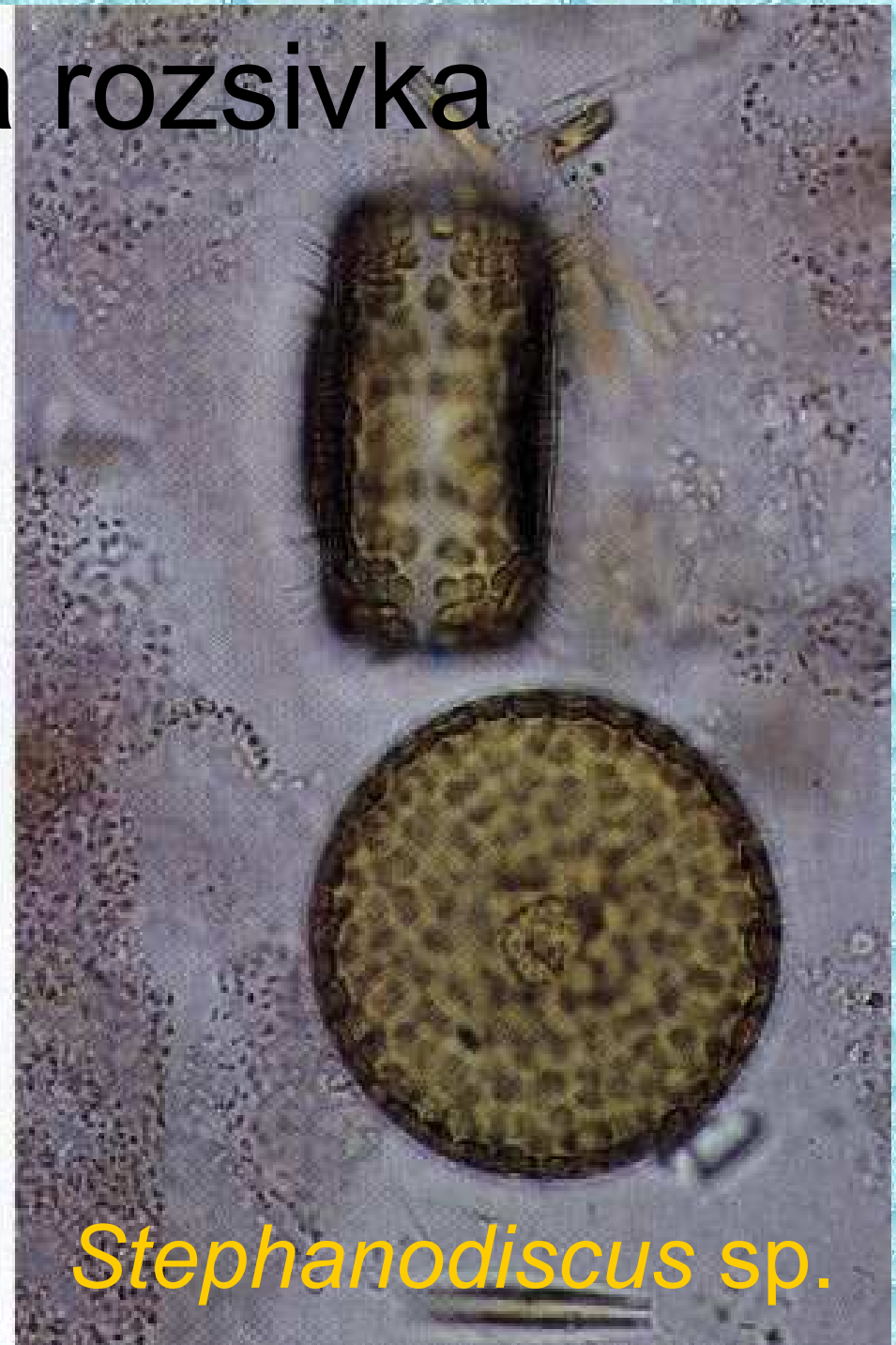
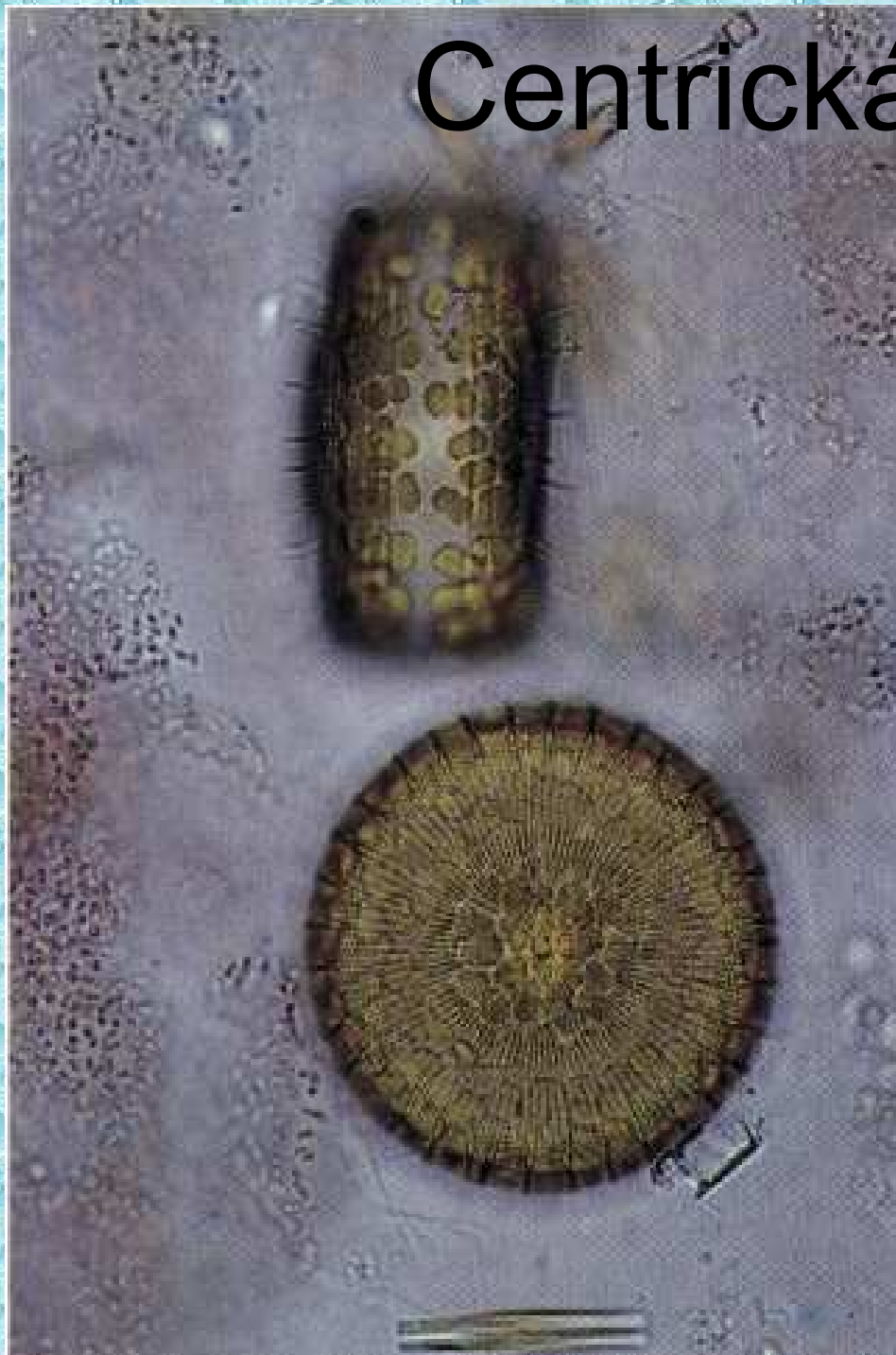
pleurální
pohled



(c)

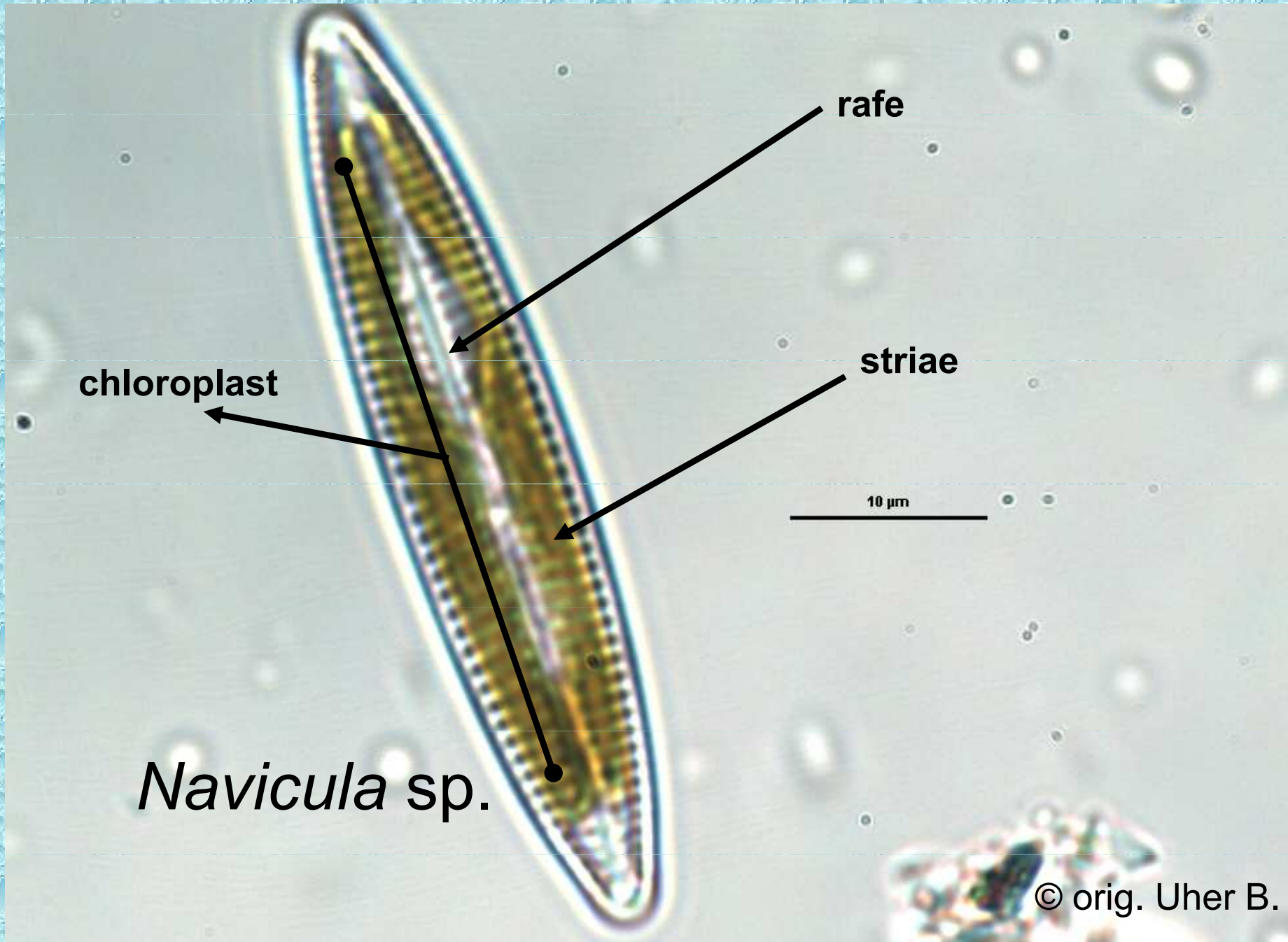
1 μm

Centrická rozsivka



Stephanodiscus sp.

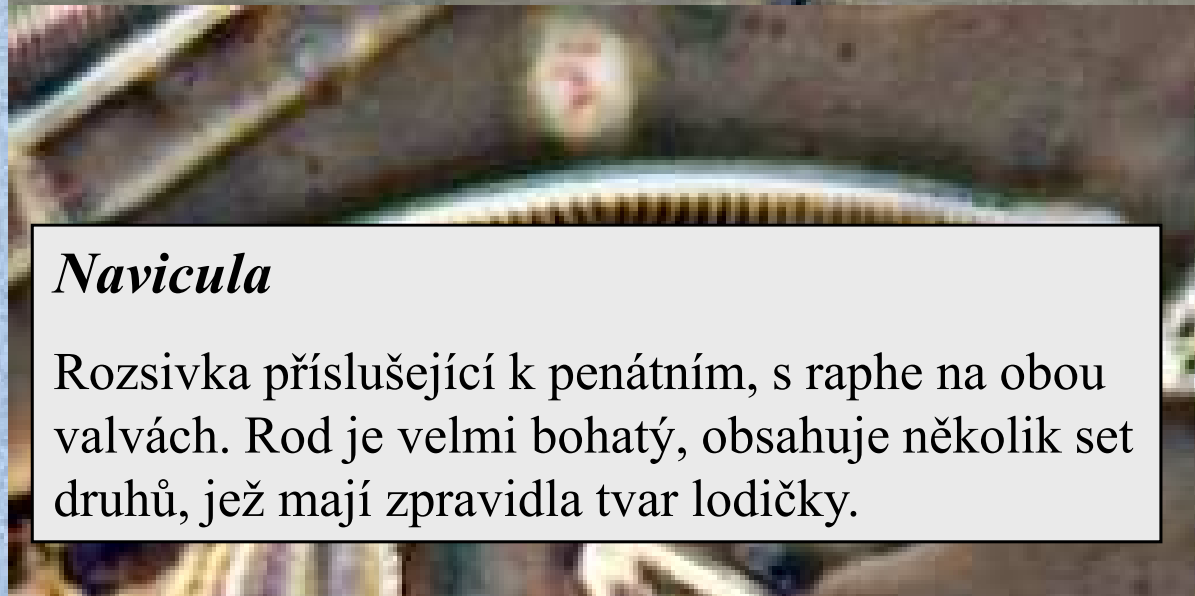
Odd.: Heterokontophyta Třída: Bacillariophyceae
Podtřída: Bacillariophycidae Řád: Naviculales



nativní preparát



trvalý preparát



Navicula

Rozsivka příslušející k penátním, s raphe na obou valvách. Rod je velmi bohatý, obsahuje několik set druhů, jež mají zpravidla tvar lodičky.

Odd.: Heterokontophyta Třída: Bacillariophyceae
Podtřída: Bacillariophycidae Řád: Naviculales

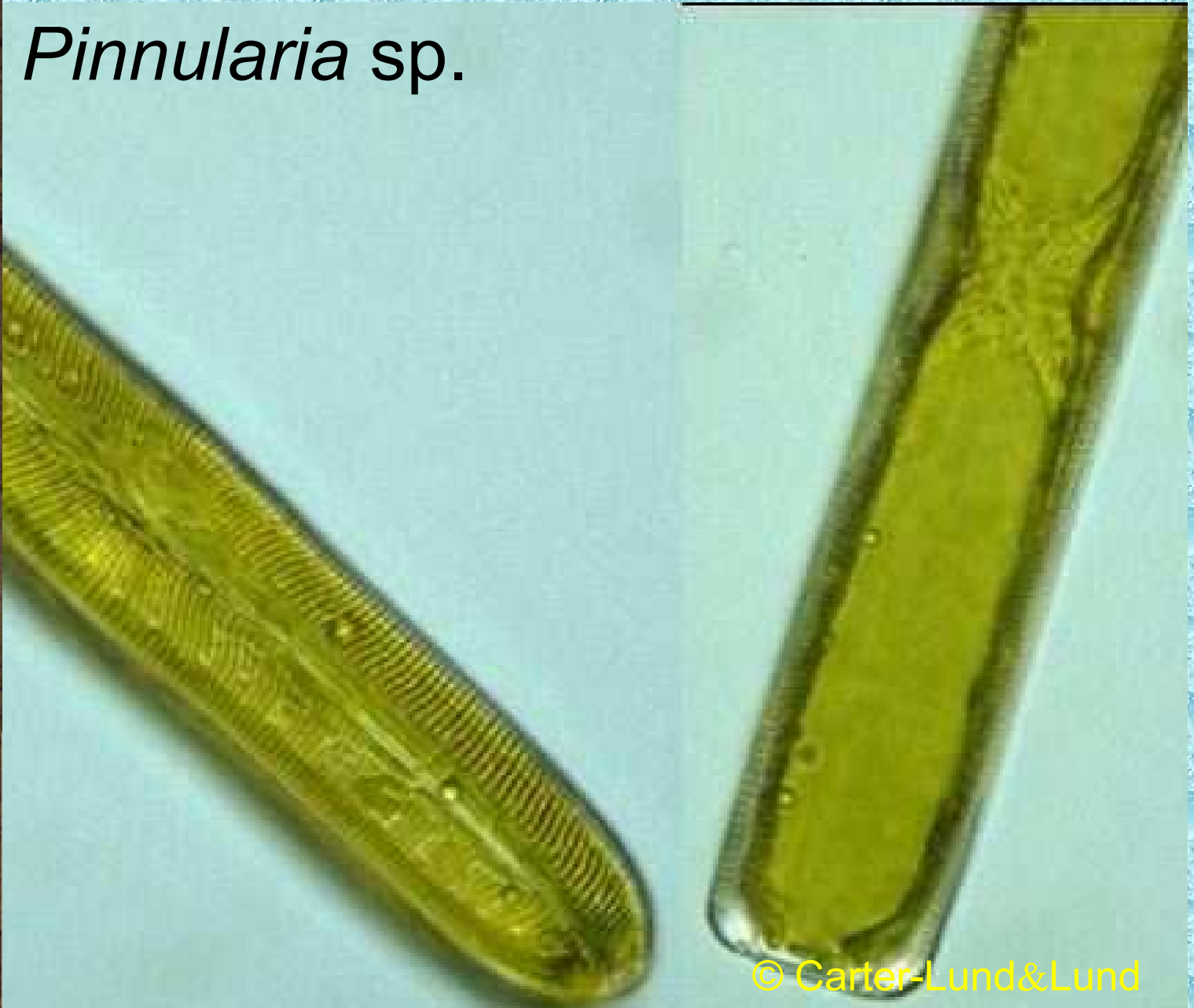
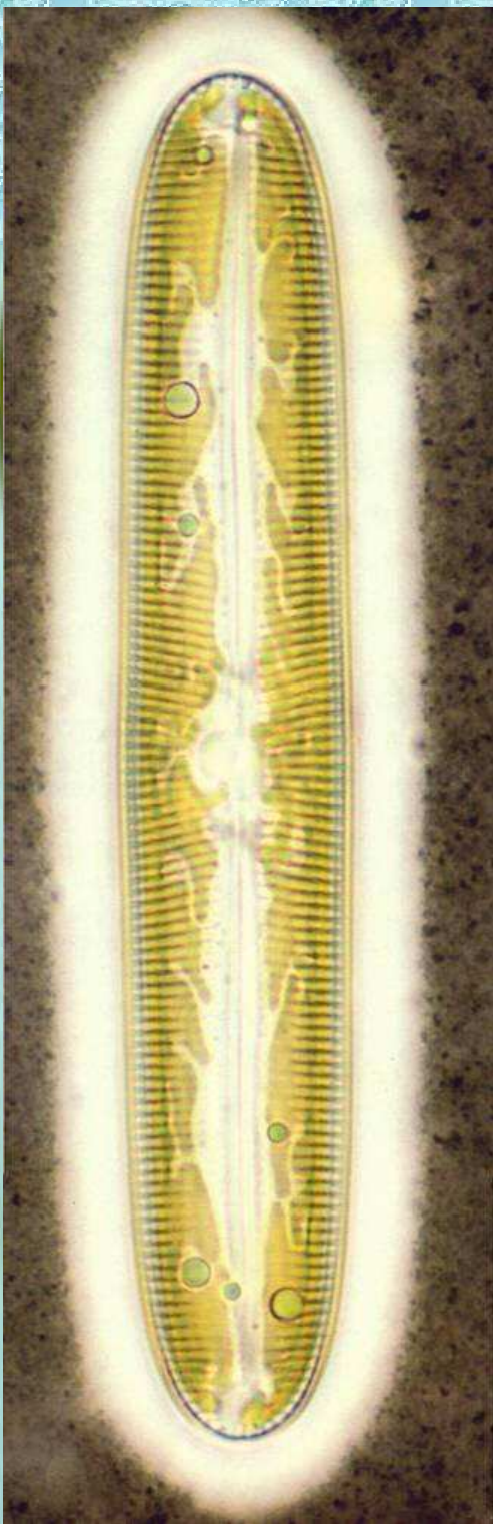


Cymbella

Buňky žijí volně v planktonu nebo přichycené pomocí slizových stopek, zřídka v rosolových trubicích. Rod má schránky souměrné jen podle roviny sagitální a příčné.

Odd.: Heterokontophyta Třída: Bacillariophyceae
Podtřída: Bacillariophycidae Řád: Naviculales

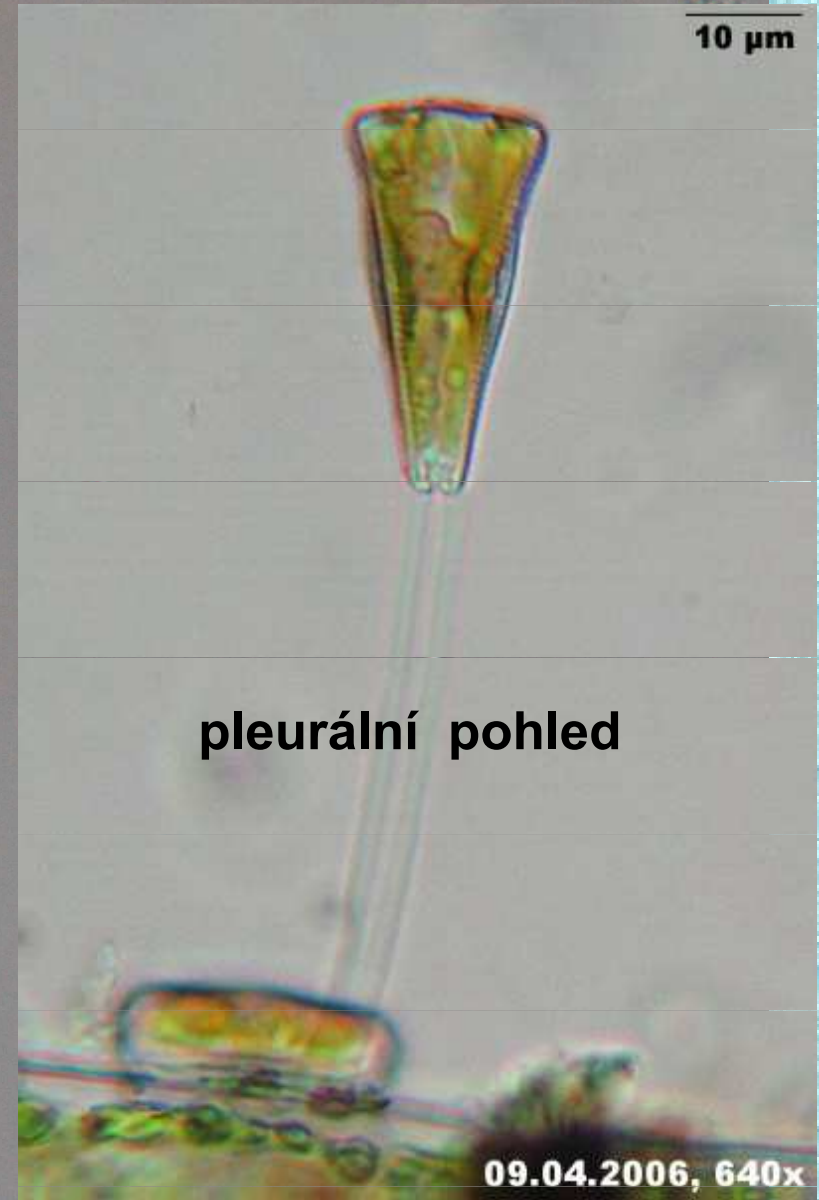
Pinnularia sp.



Odd.: Heterokontophyta Třída: Bacillariophyceae
Podtřída: Bacillariophycidae Řád: Naviculales

valvální pohled

Gomphonema sp.



© orig. Uher B.

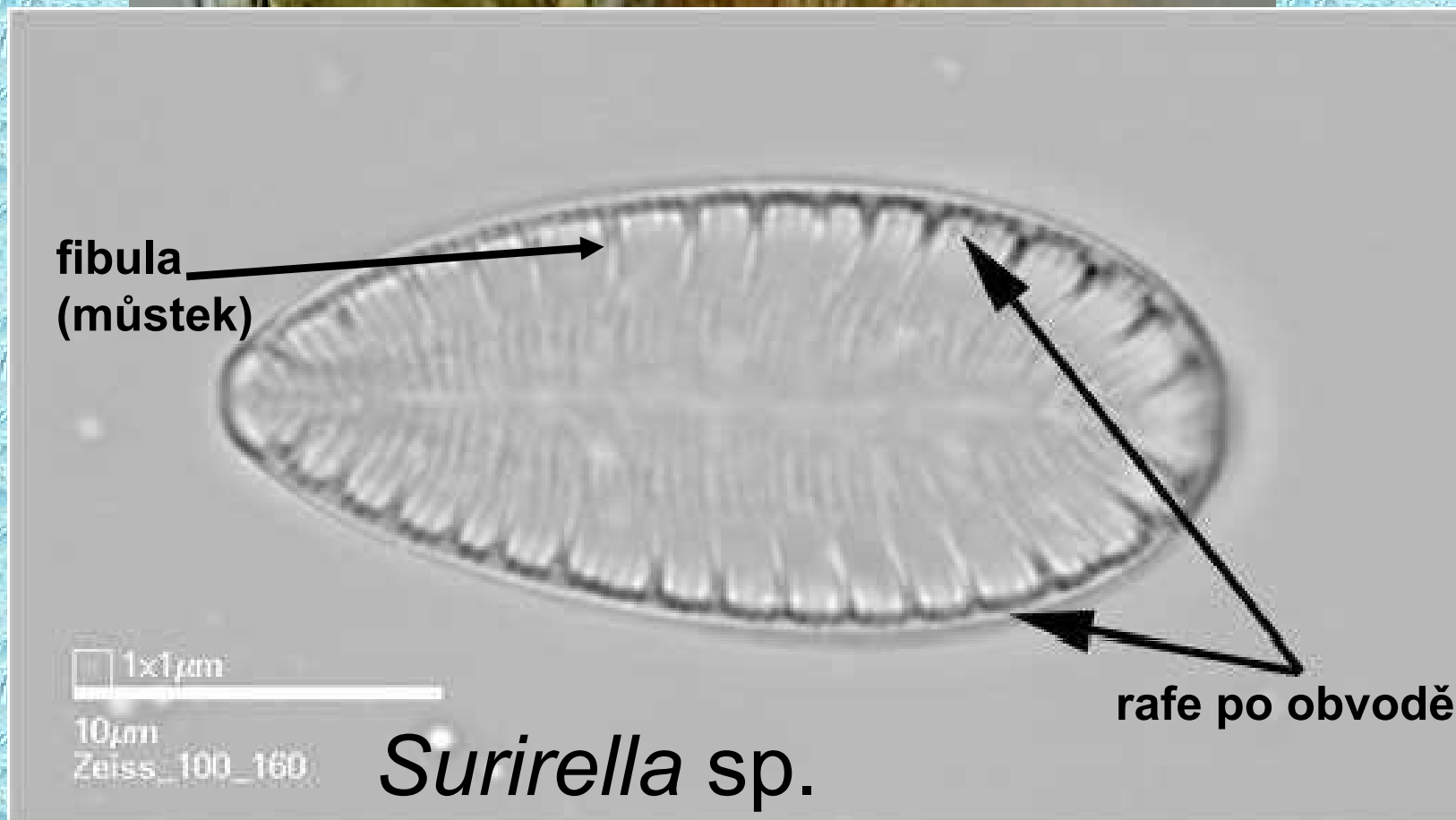
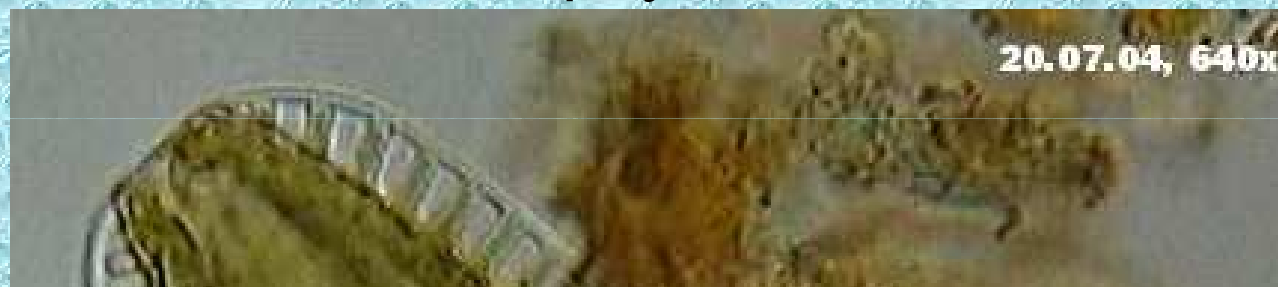
Odd.: Heterokontophyta Třída: Bacillariophyceae
Podtřída: Bacillariophycidae Řád: Naviculales

Gyrosigma sp.



© orig. Uher B.

Odd.: Heterokontophyta Třída: Bacillariophyceae
Podtřída: Bacillariophycidae Řád: Surirellales



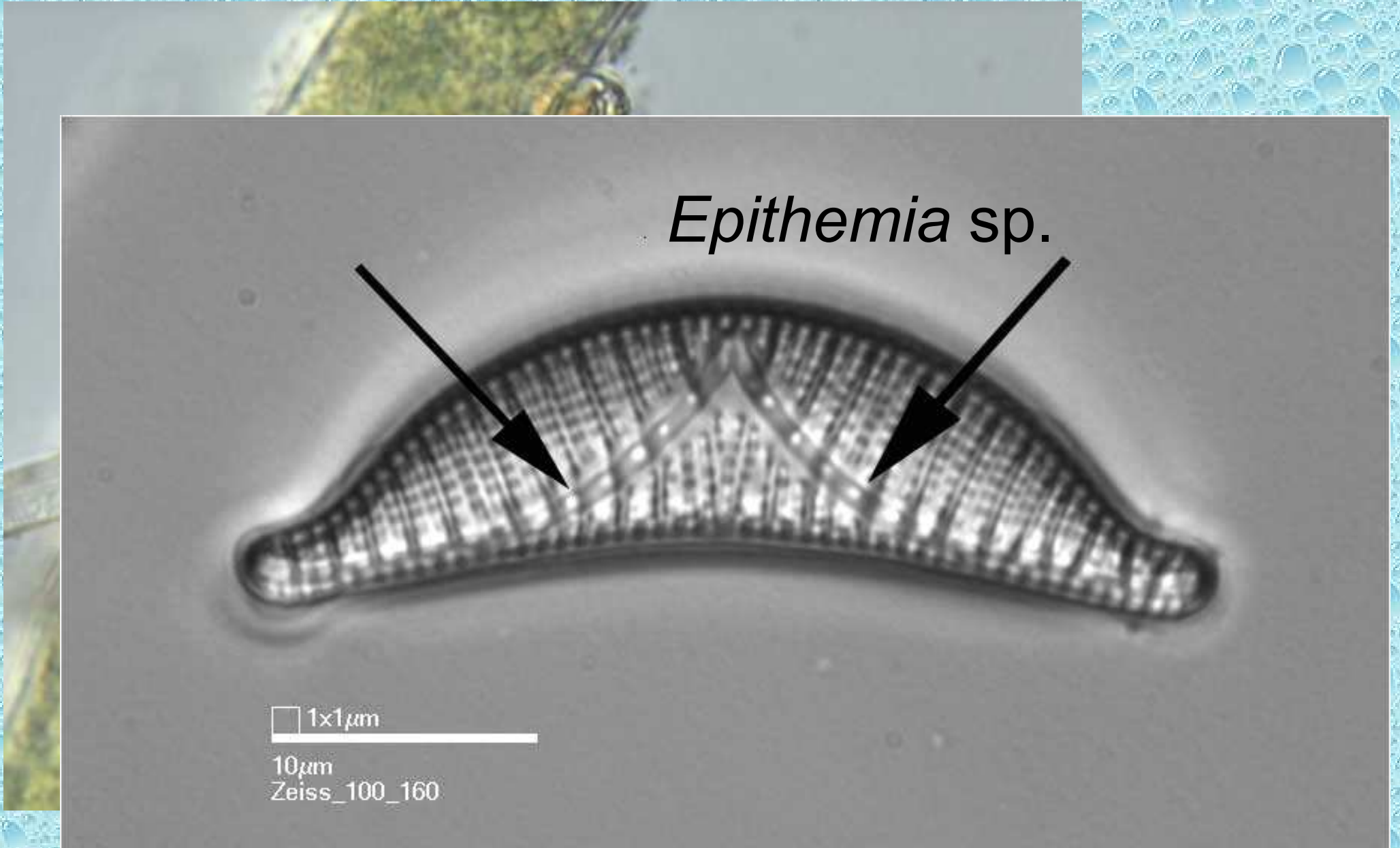
Odd.: Heterokontophyta Třída: Bacillariophyceae
Podtřída: Bacillariophycidae Řád: Epithemiales

Epithemia sp.

1x1 μ m

10 μ m

Zeiss_100_160



Odd.: Heterokontophyta Třída: Xanthophyceae
Řád: Tribonematales

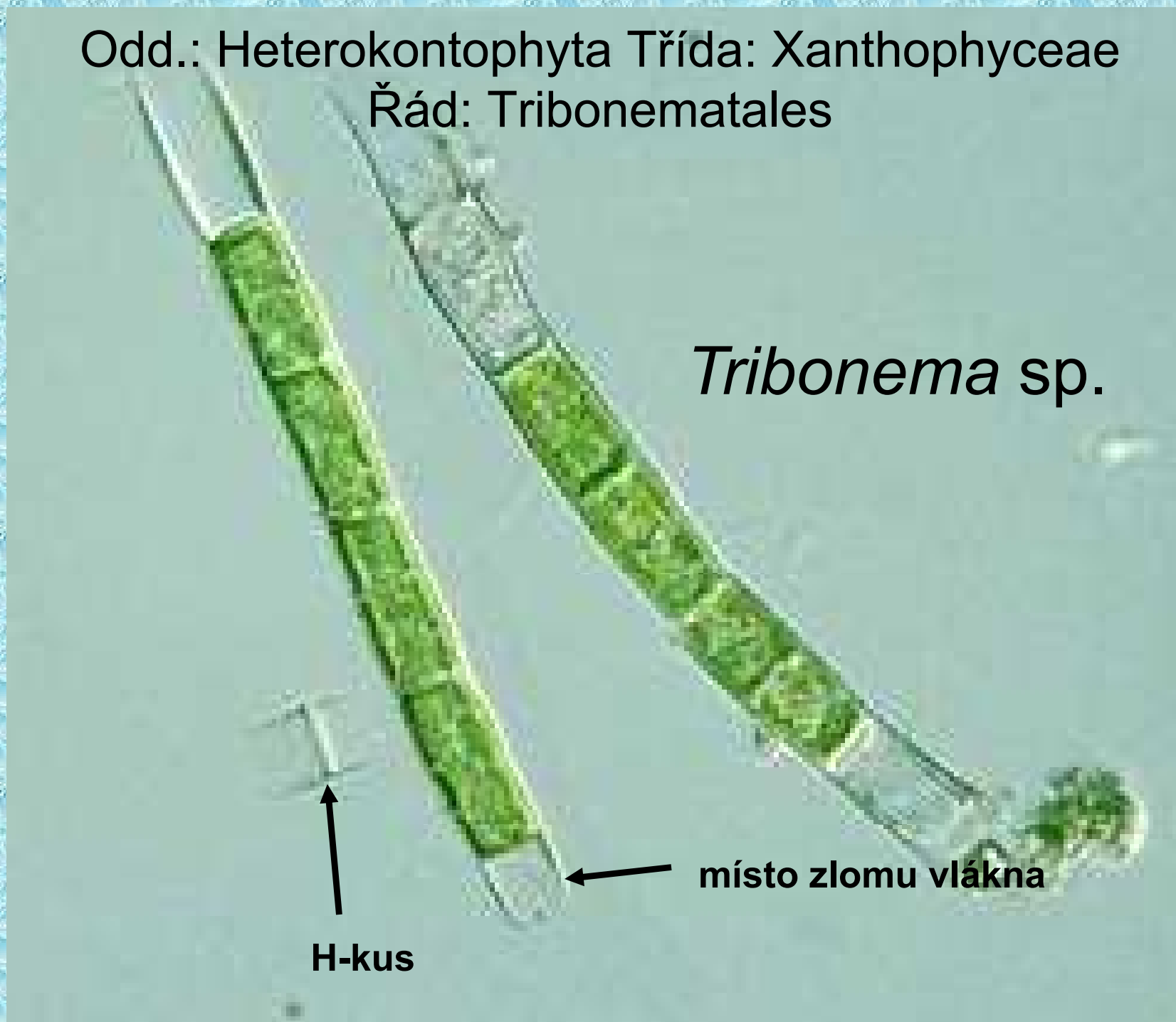
Tribonema sp.



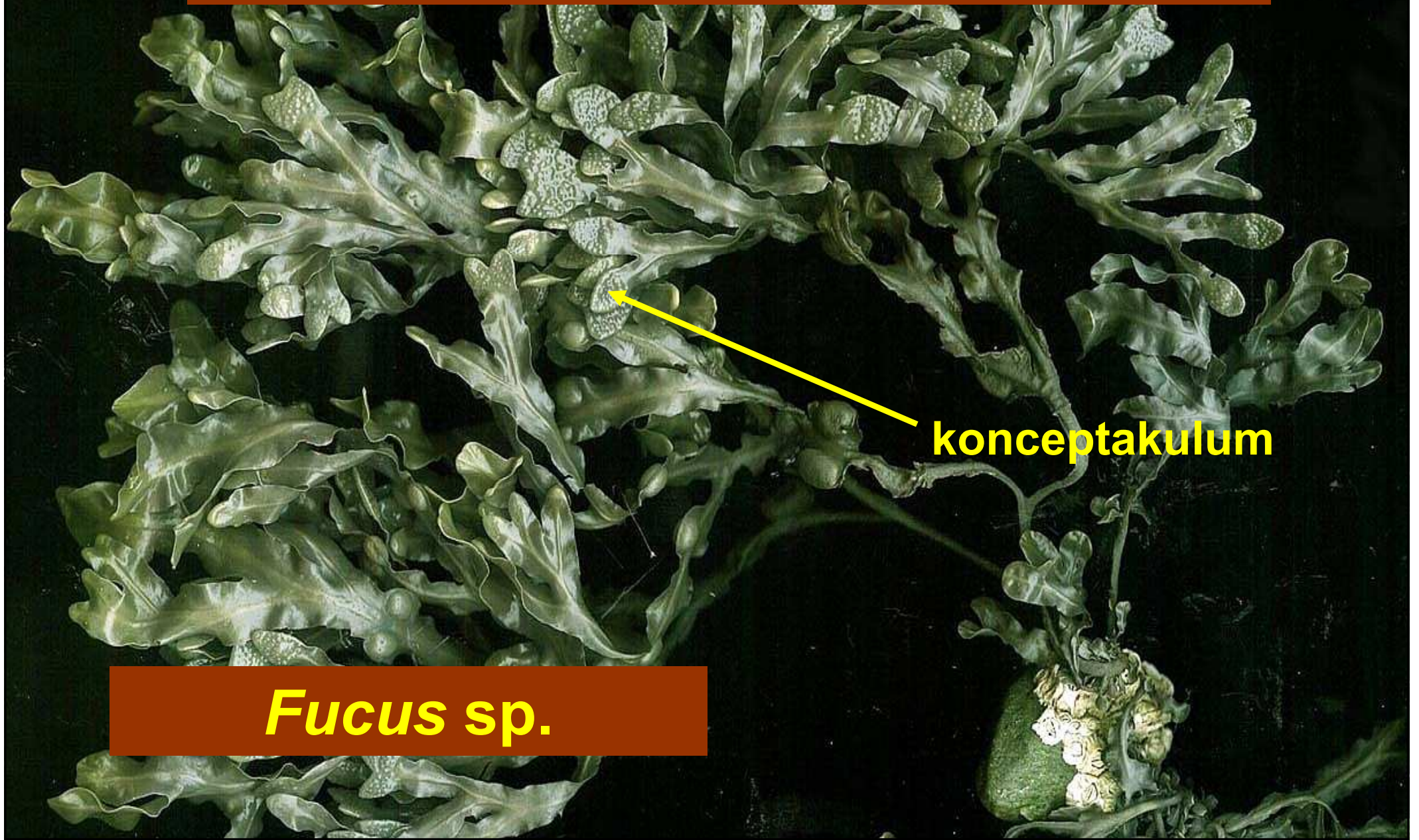
H-kus



místo zlomu vlákna

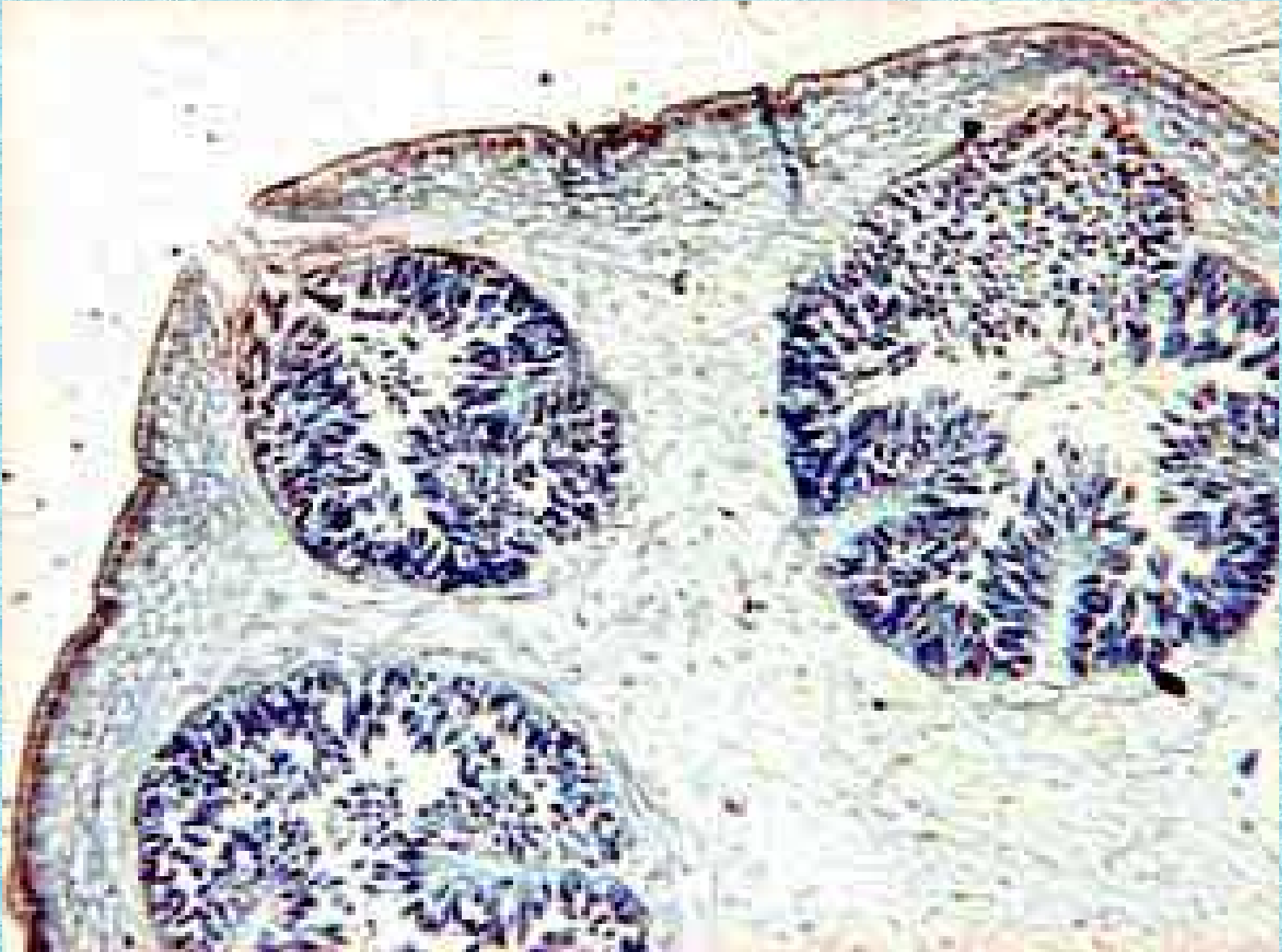


Odd.: Heterokontophyta Třída: Phaeophyceae
Řád: Fucales



Fucus sp.

Konceptakulum - samčí - anteridia



Konceptakulum - samičí - oogonia



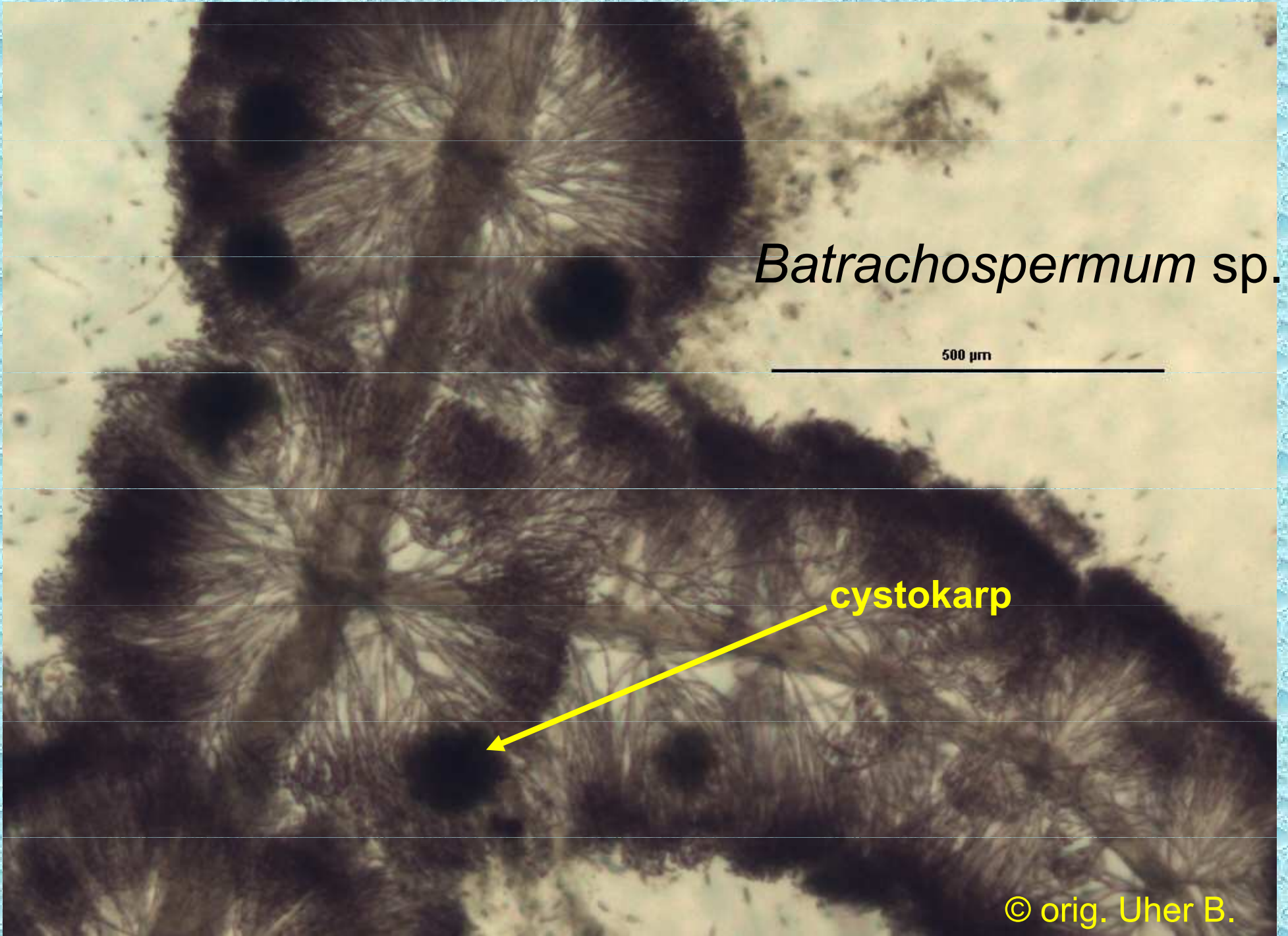
Odd.: Rhodophyta Třída: Florideophycidae Řád: Batrachospermales

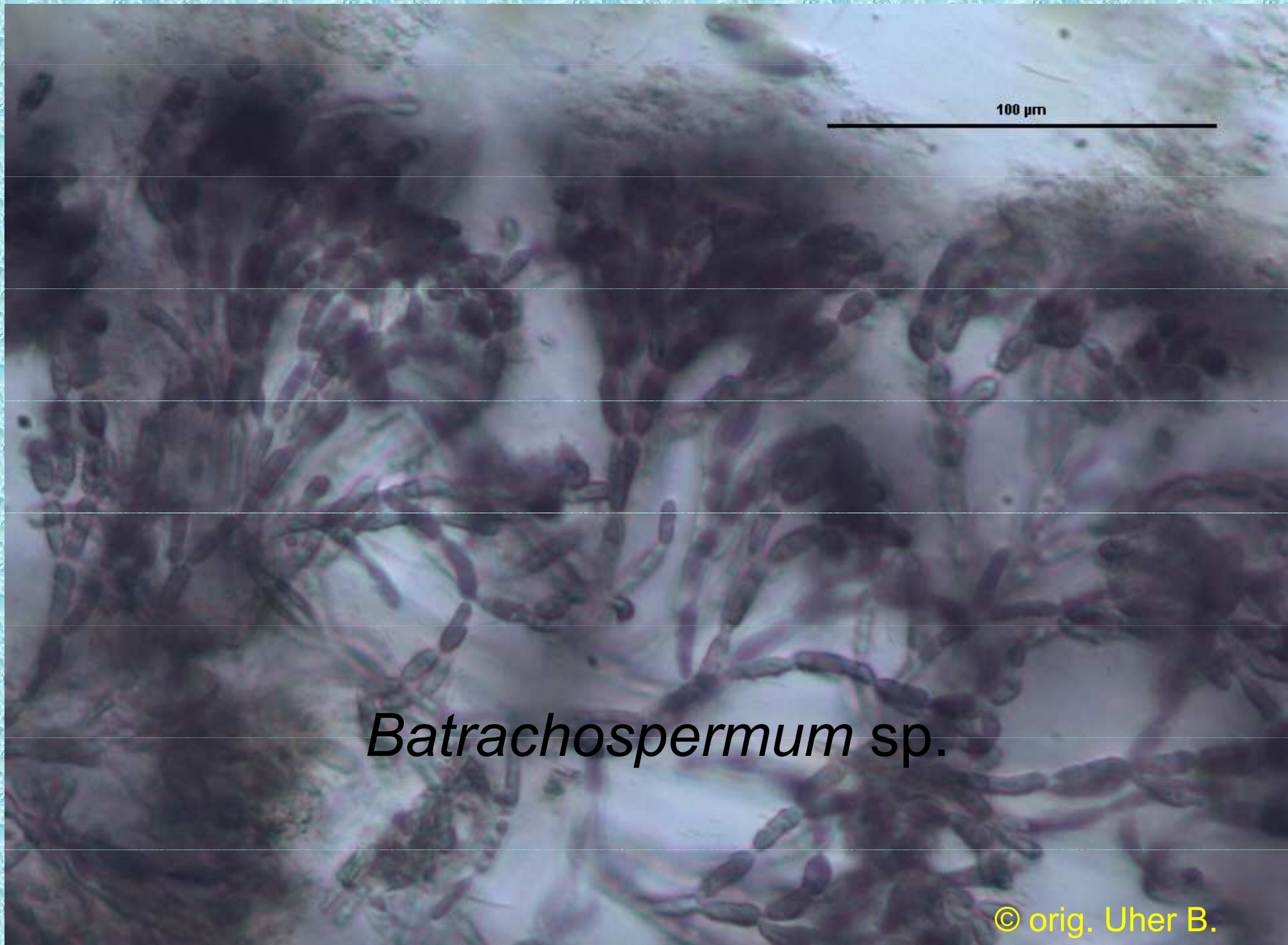
Batrachospermum sp.

500 μm

cystokarp

© orig. Uher B.





Batrachospermum sp.