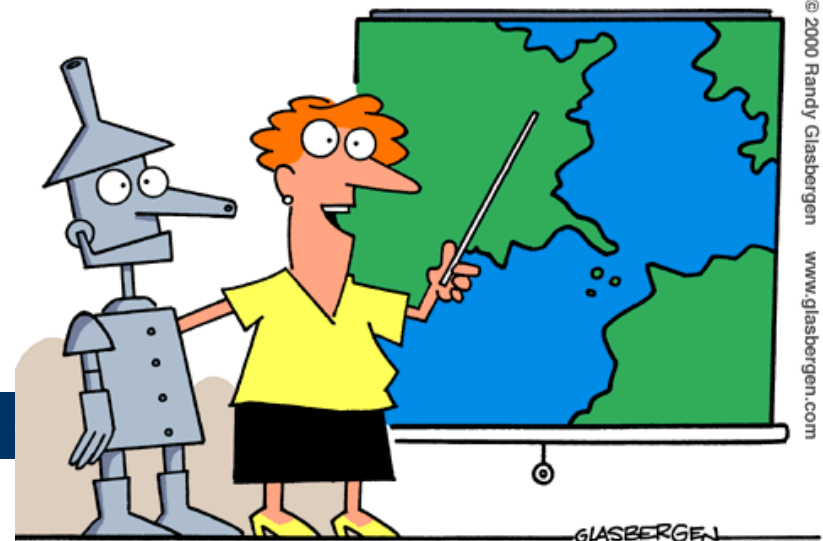


# Geography competition 2004 Multimedia test



© 2000 Randy Glasbergen www.glasbergen.com

Questions from the participating countries

Coordination:

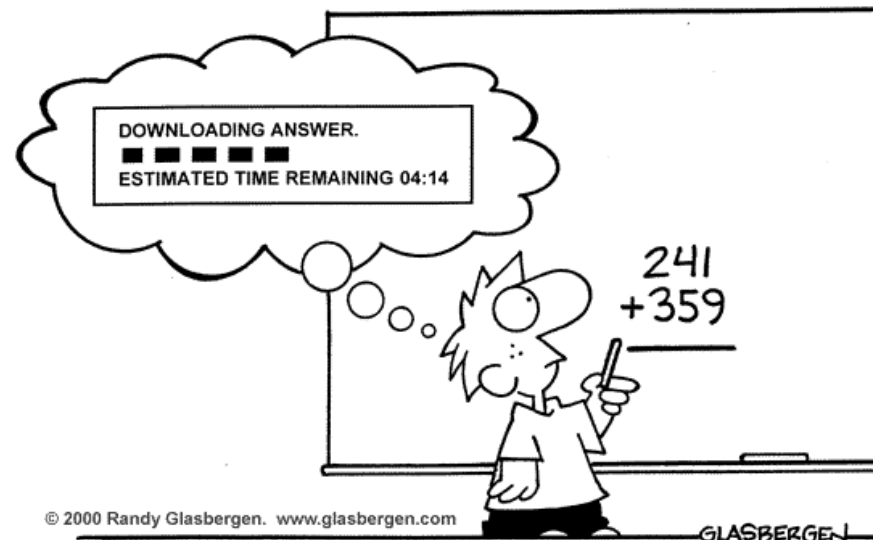
Luc Zwartjes & Joop van der Schee

"CLASS, I'D LIKE YOU TO WELCOME OUR NEW FOREIGN EXCHANGE STUDENT! WHO'D LIKE TO COME UP HERE AND HELP US FIND "OZ" ON THE MAP?"

# Method

- For every question you get an amount of time. That time depends of the question.
- Answer on answer sheet
- Correct answer = + 3,  
No answer = 0
- Good luck!

**STARTING ...**



# Count down ...

---



# Question 1

This is a picture of :

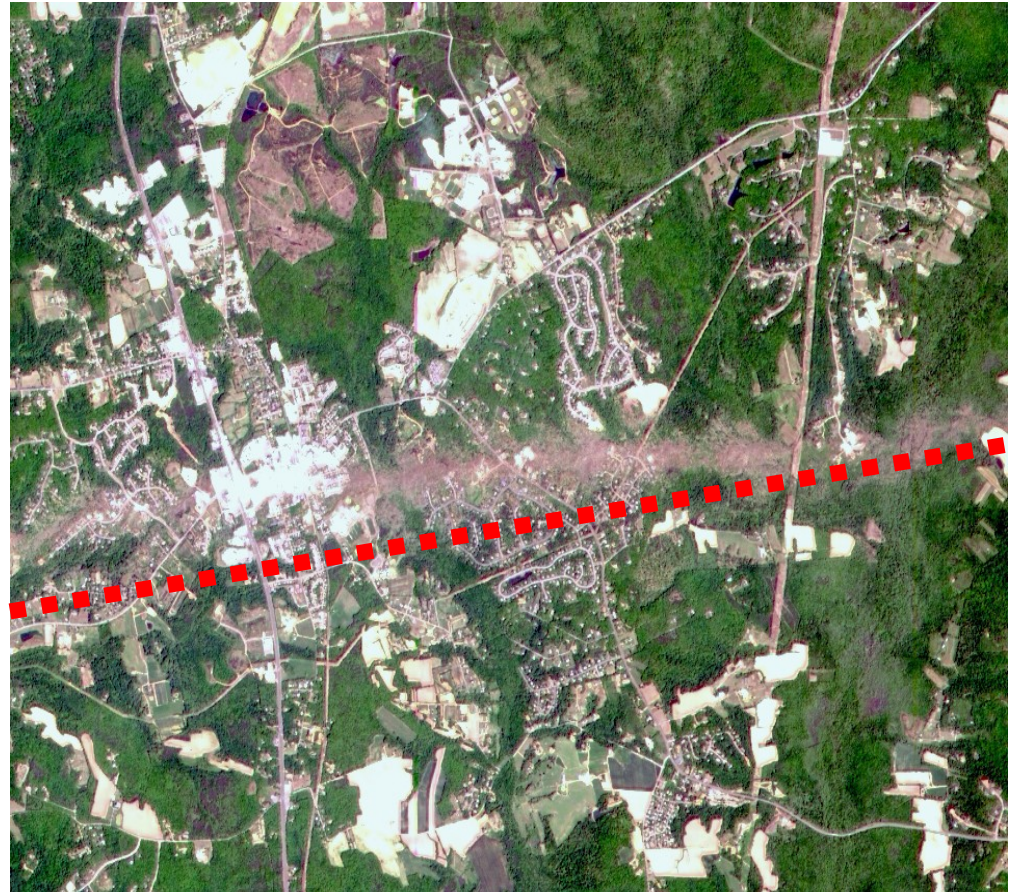
- A. *an anticline*
- B. *a fault*
- C. *a syncline*



## Question 2

The bright stripe (above the dash line) passing through the town results from:

- A. *Flood*
- B. *Tornado*
- C. *Fire*
- D. *Deforestation*



Which is the correct sequence of the pictures that show the landscapes at  $40^{\circ}\text{N } 124^{\circ}\text{W}$ ,  $40^{\circ}\text{N } 123^{\circ}\text{W}$ , and  $40^{\circ}\text{N } 122^{\circ}\text{W}$ ?

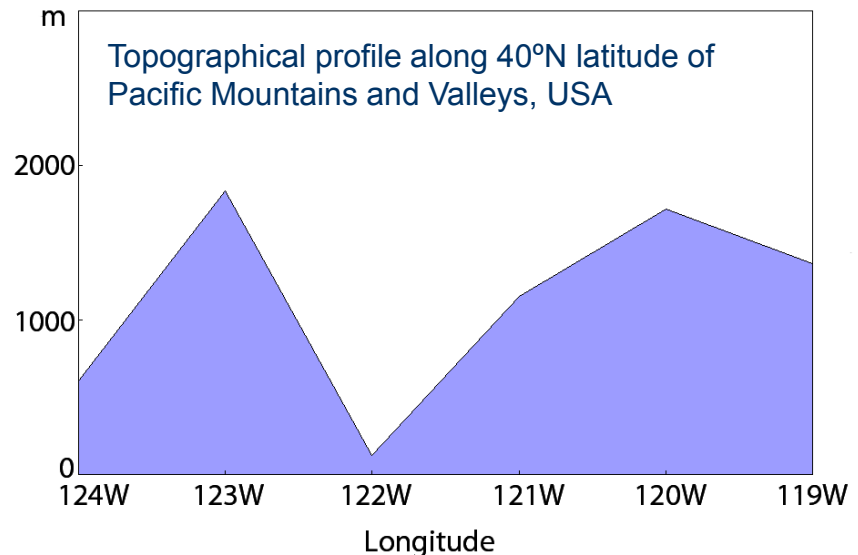
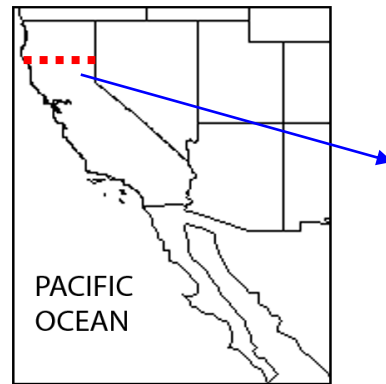
## Question 3

A: 1,3,2

B: 3,2,1

C: 2,3,1

D: 1,2,3



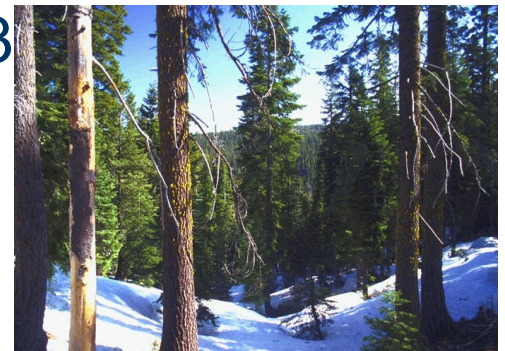
1



2



3



## Question 4

Which hazard inspires the particular design of this apartment?

- A. *Volcano eruption*
- B. *Debris flow*
- C. *Flood*
- D. *Earthquake*



# Question 5

What do you see on the photo:

- A. *tidal bore*
- B. *saltpan*
- C. *low tide*
- D. *hydration*





## Question 6

Badlands in the US are caused by :

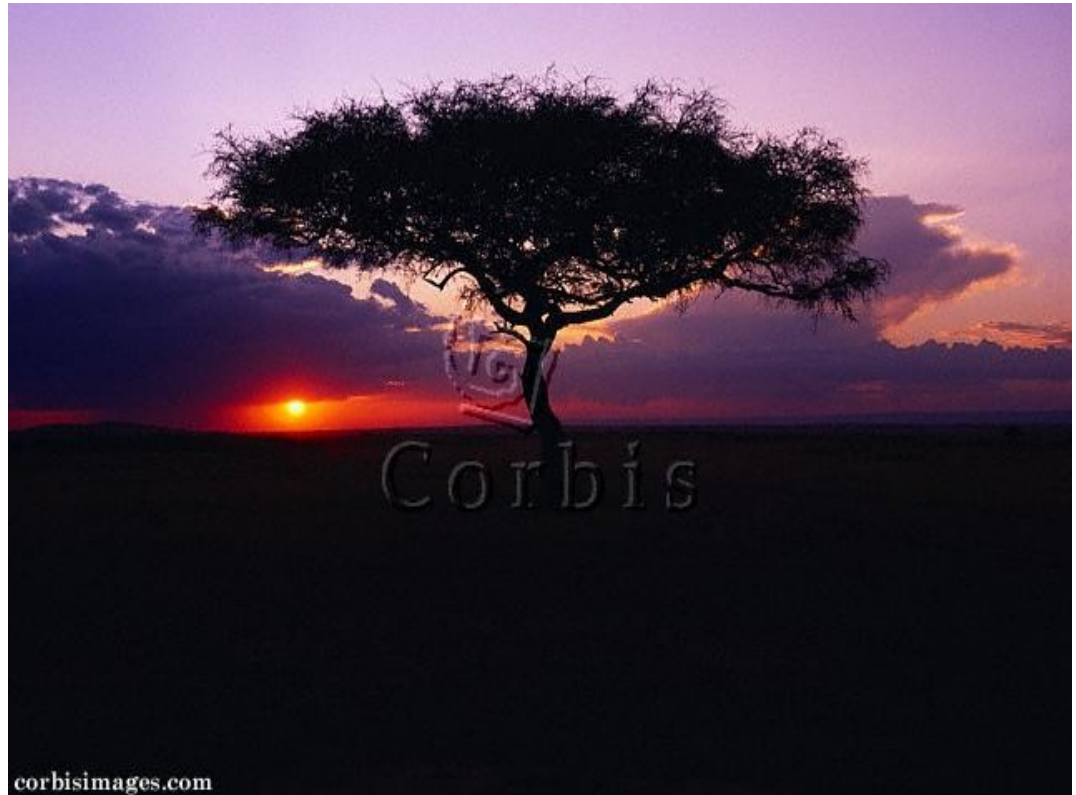
- A. *Overgrazing*
- B. *Climatic changes*
- C. *Gold diggers*



# Question 7

This tree is typical for what kind of vegetation:

- A. *Rain forest*
- B. *Savannah*
- C. *Steppe*
- D. *Maquis*



## Question 8

On the picture an Asian coast of the Bosphorous is shown. The photo is taken on the left board of the ship. In which direction is the ship sailing?

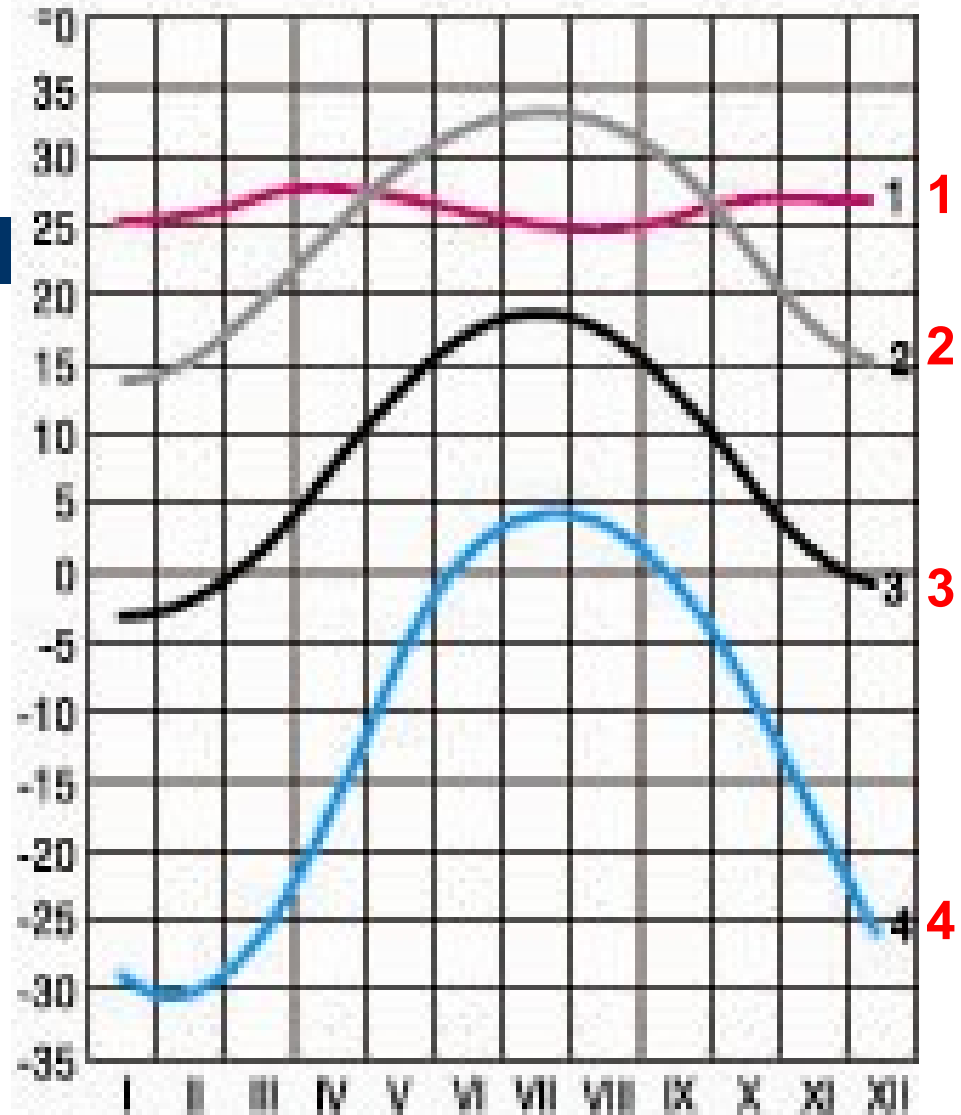
- A. *from west to east*
- B. *from east to west*
- C. *from north to south*
- D. *from south to north*



## Question 9

Match the following towns to the temperature lines.

- A. *El Riad* Latitude  $24^{\circ}\text{N}$ , Longitude  $46^{\circ}\text{E}$ , 111m
- B. *Clyde* Latitude  $70^{\circ}\text{N}$ , Longitude  $68^{\circ}\text{W}$ , 3 m
- C. *Mogadishu* Latitude  $2^{\circ}\text{N}$ , Longitude  $45^{\circ}\text{E}$ , 12 m
- D. *Warsaw* Latitude  $52^{\circ}\text{N}$ , Longitude  $21^{\circ}\text{E}$ , 111m



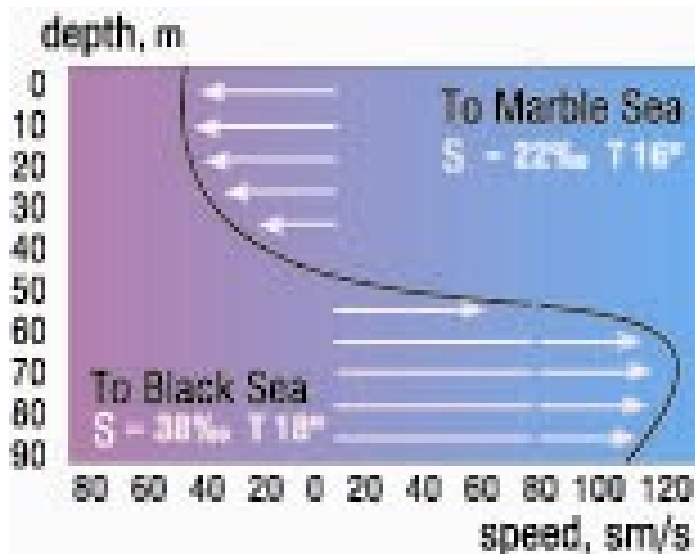
# Question 10

Which of the following graphs fits the description in the text and shows the currents from The Black Sea to The Marble Sea through Bosphorous:

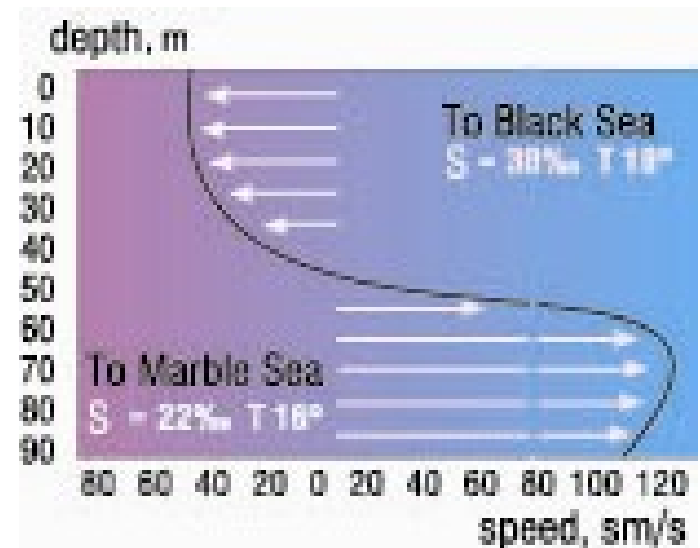
A or B?

*“Some currents are due to difference in the temperature and the salinity of water in different parts of oceans and seas. In less salty waters there are surface currents, while in more salty ones the currents move in the opposite direction to compensate for the water carried off by surface currents”*

**A**



**B**



## Question 11

Give the number of location of each ethnic group on the map

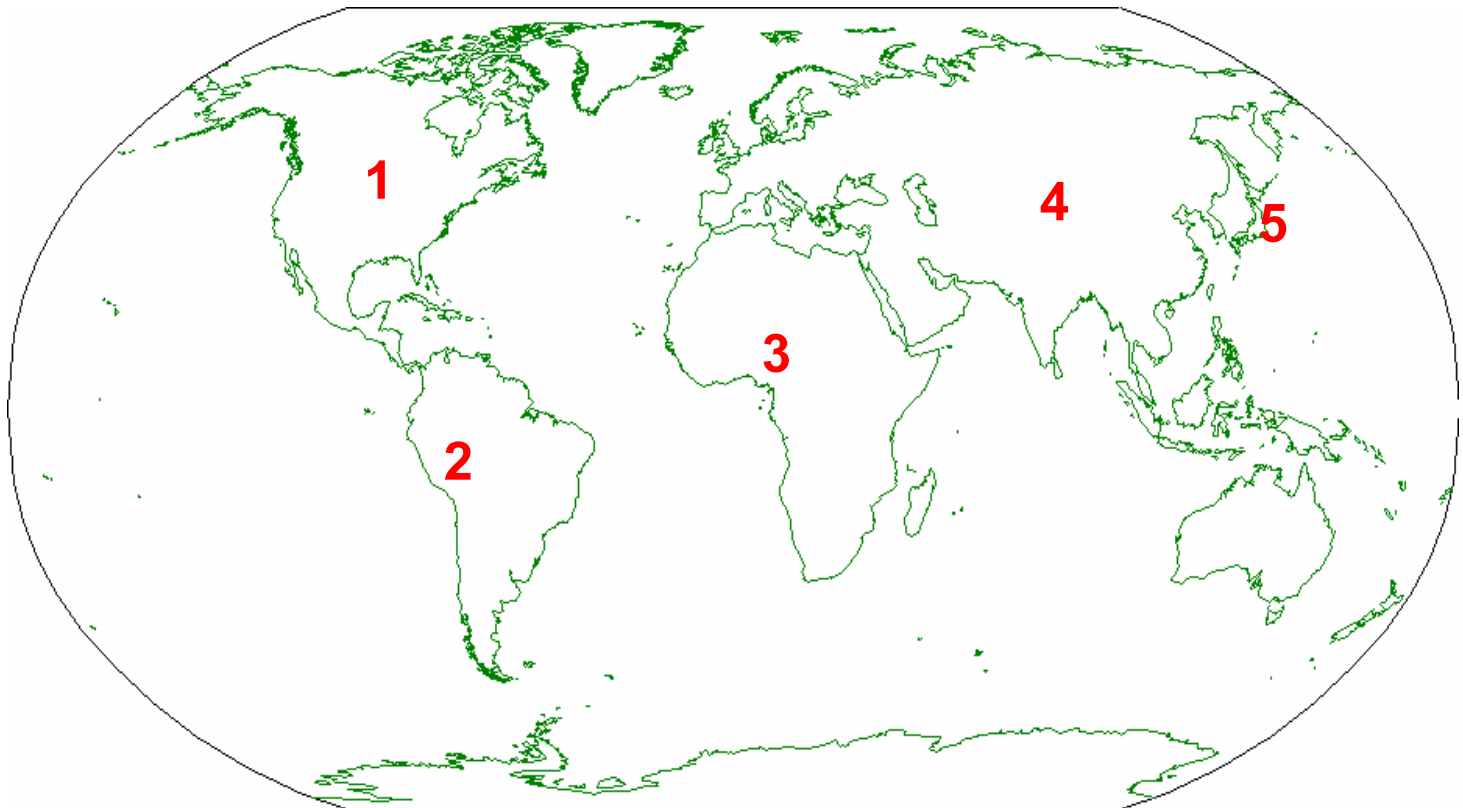
... – *Ainu*

... – *Cherokee*

... – *Quechua*

... – *Tuvans*

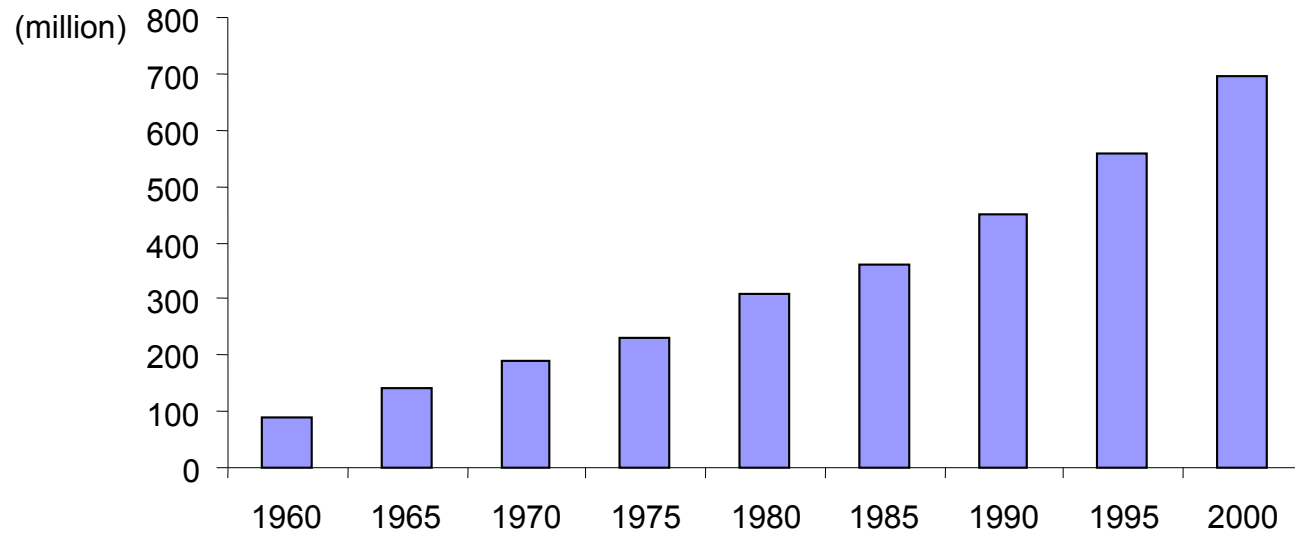
... – *Yoruba*



## Question 12

What kind of increased activity is depicted on graph?

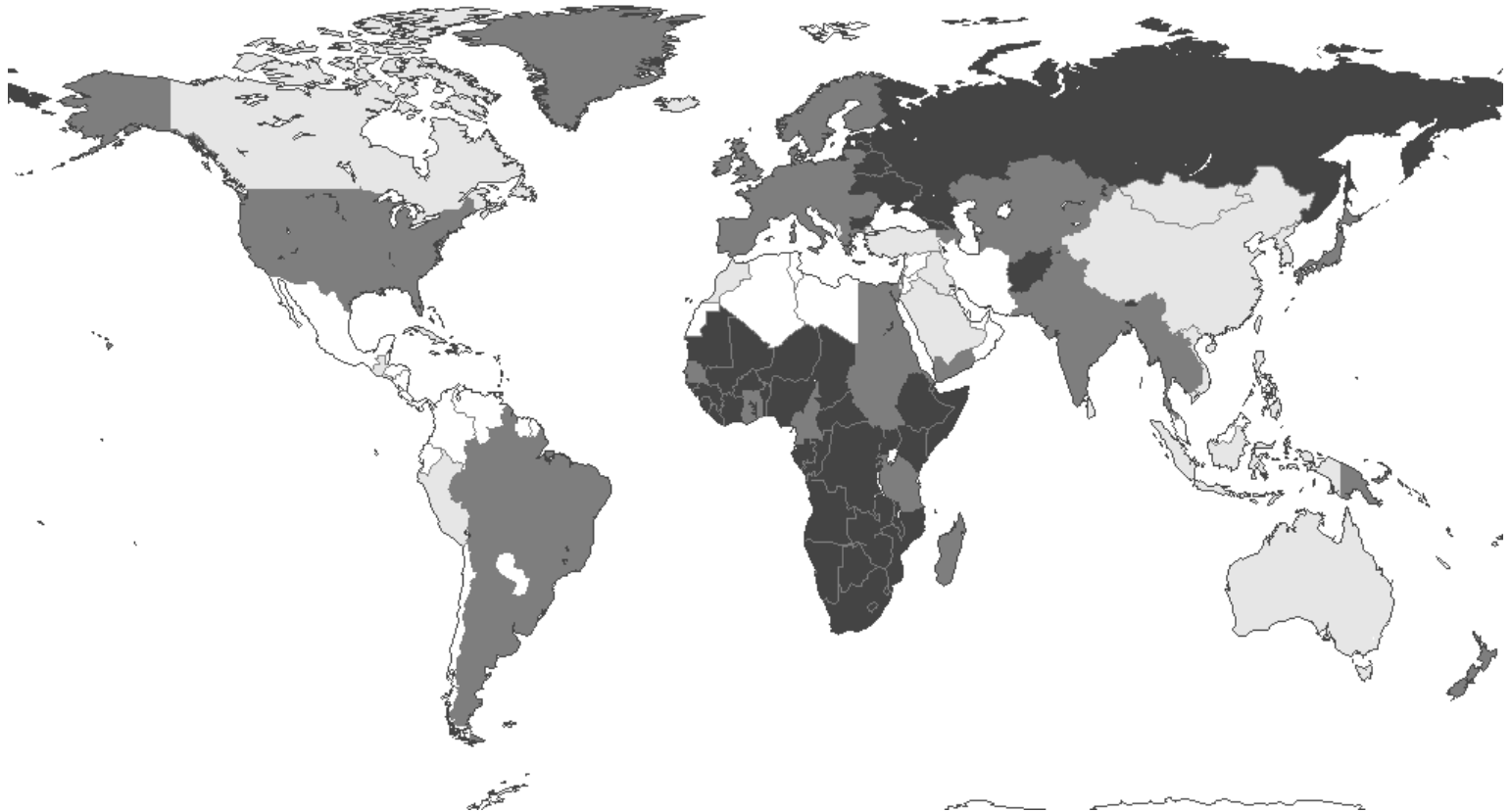
- A. *Fish production from ocean*
- B. *Number of international tourists*
- C. *Number of Internet users in the world*
- D. *Area for rice production*



## Question 13

This map represents one of the variables of demographic characteristics, which?

- A. *Birth rate*
- B. *Death rate*
- C. *Natural increase rate*
- D. *Share of rural population*

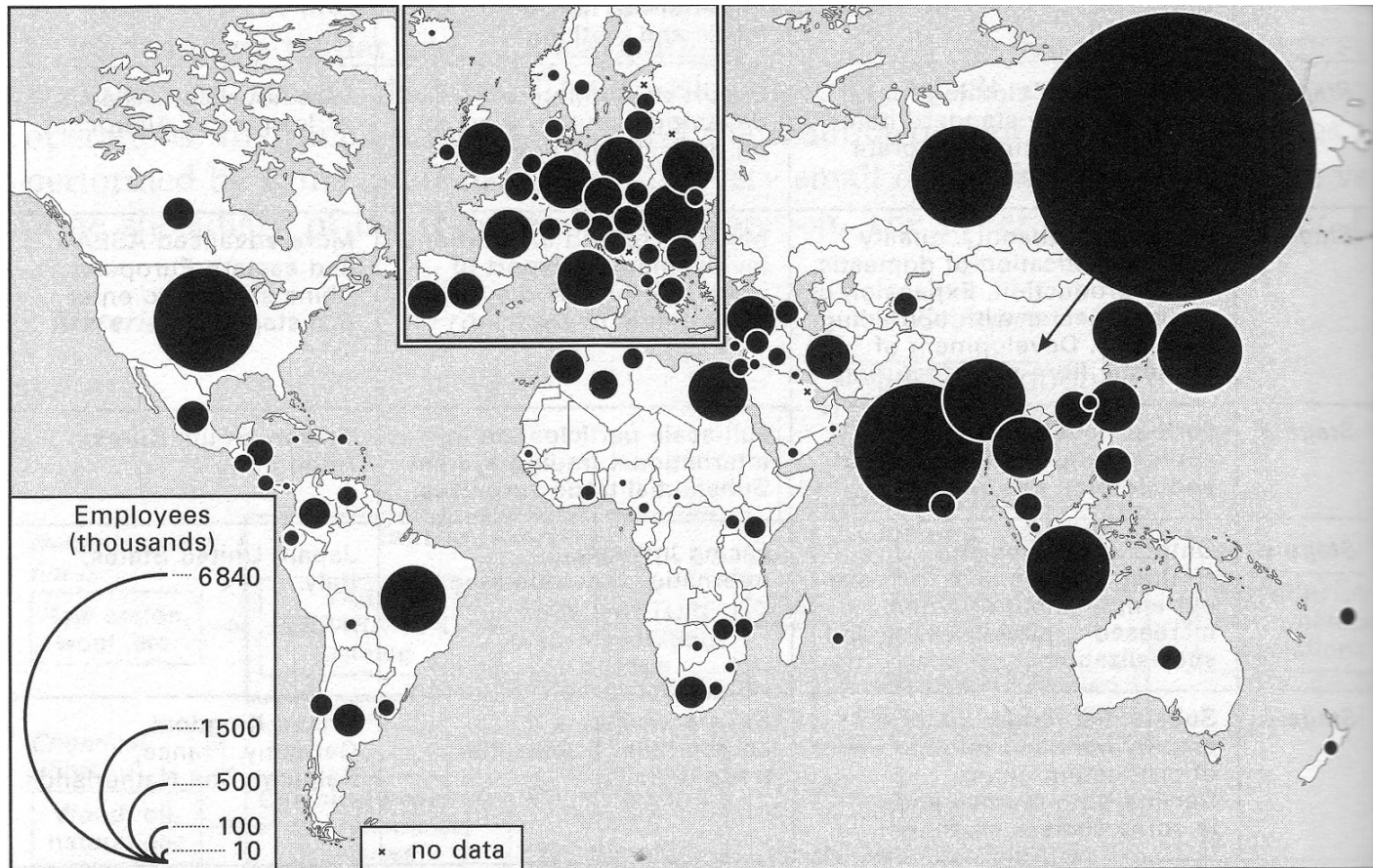




# Question 14

The following map (1995) represents employment in...

- A. Metallurgy
- B. Car industry
- C. Electronics
- D. Textile industry



# Question 15

What city is shown here:

- A. *Rio de Janeiro*
- B. *Dar Es Salaam*
- C. *Hong Kong*
- D. *Hobart*



# Question 16

What city is shown here:

- A. *Budapest*
- B. *Prague*
- C. *Helsinki*
- D. *Saint-Petersbourg*
- E. *Warsaw*



## Question 17



This big city is located more than 30 degrees north latitude and more than 120 degrees eastern longitude.

The photo shows:

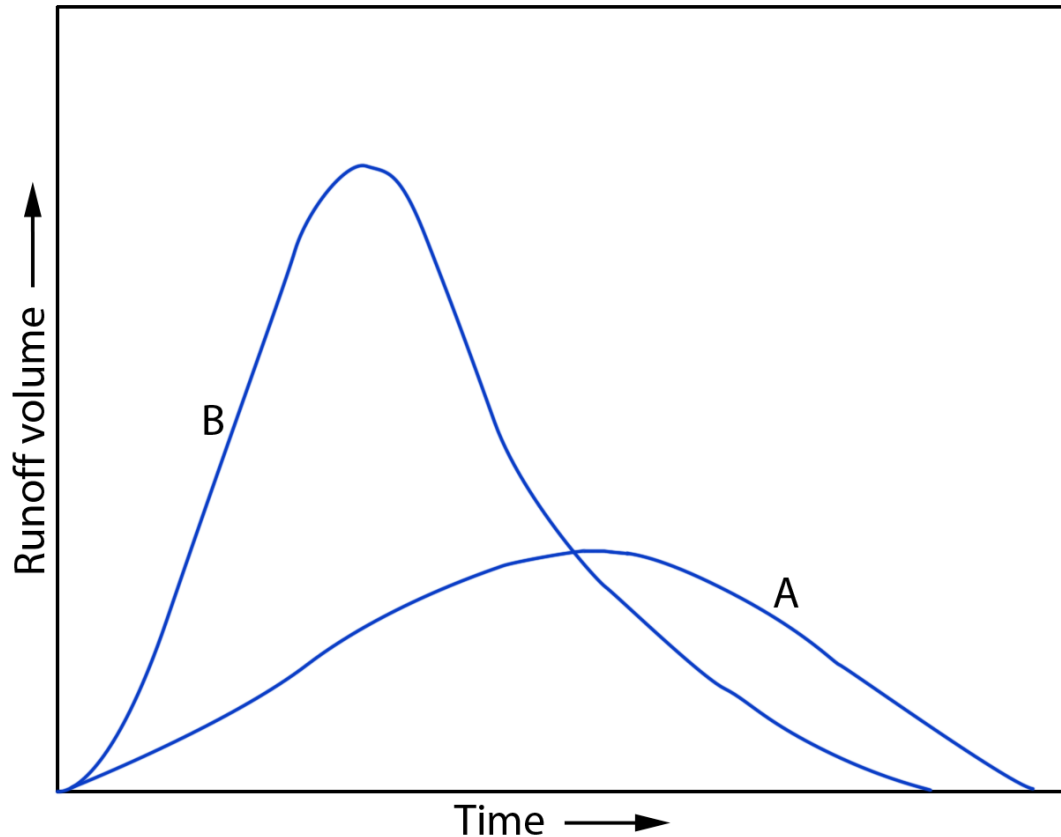
- A. *Sydney*
- B. *Kobe*
- C. *Montevideo*
- D. *Taipei*
- E. *Singapore*



## Question 18

What kind of land use change will make the curve A become the curve B?

- A. *commercial* → *residential*
- B. *desert* → *grazing*
- C. *grassland* → *forest*
- D. *agricultural* → *industrial*

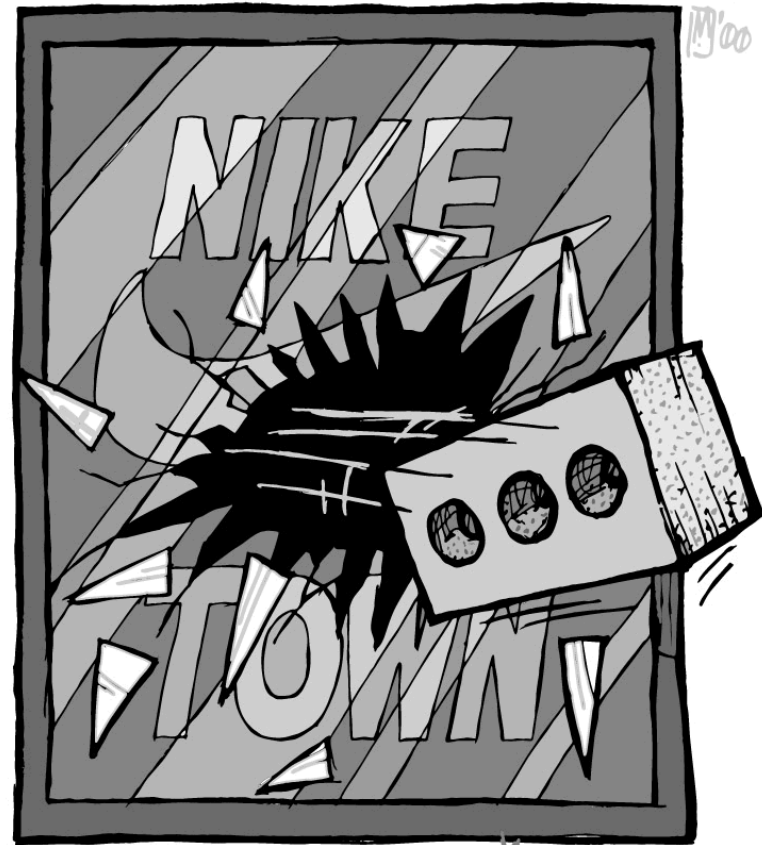


## Question 19

What point does this poster try to make?

- A. *anti-terrorism*
- B. *anti-racism*
- C. *anti-globalization*
- D. *anti-imperialism*

**LIFE IS SHORT.  
THROW HARD.**



**support your local ~~BL~~ACK BLOC!**

## Question 20

Which region is shown in the pictures?

- A. *Central Asia*
- B. *Middle Africa*
- C. *Patagonia*
- D. *Northern Canada*



## Question 21

Which country is shown in the pictures?

- A. *Argentina*
- B. *Australia*
- C. *Pakistan*
- D. *Turkey*



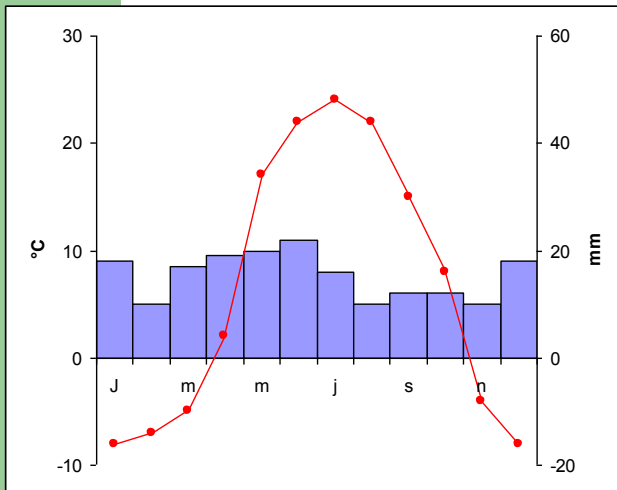


# Question 22

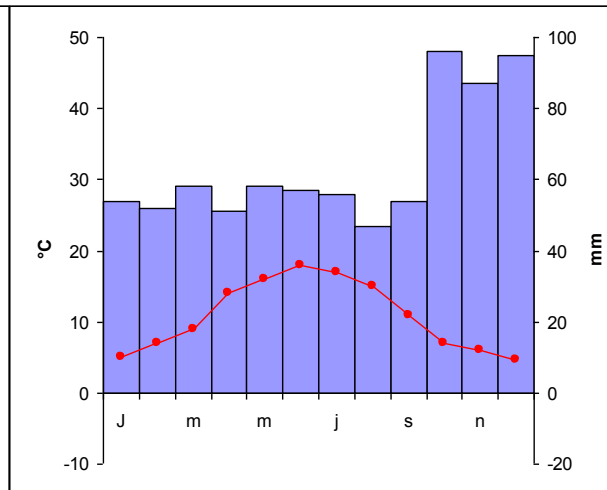
What climatogram matches the picture:  
*A, B or C?*



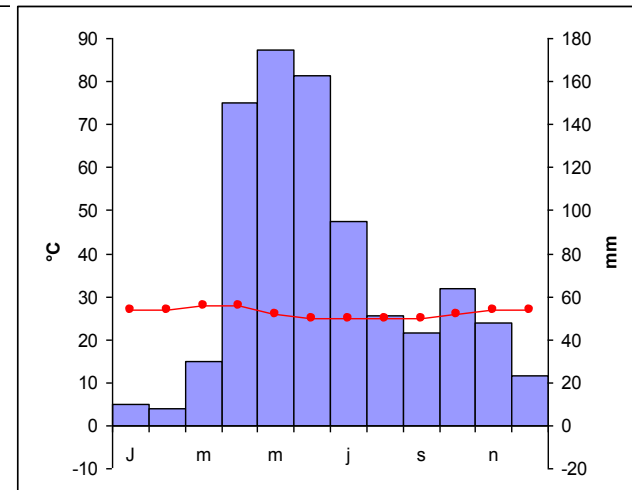
**A**



**B**



**C**



## Question 23

What cloud is typically an indication of thunderstorms:  
*A, B or C?*



**a**

**b**



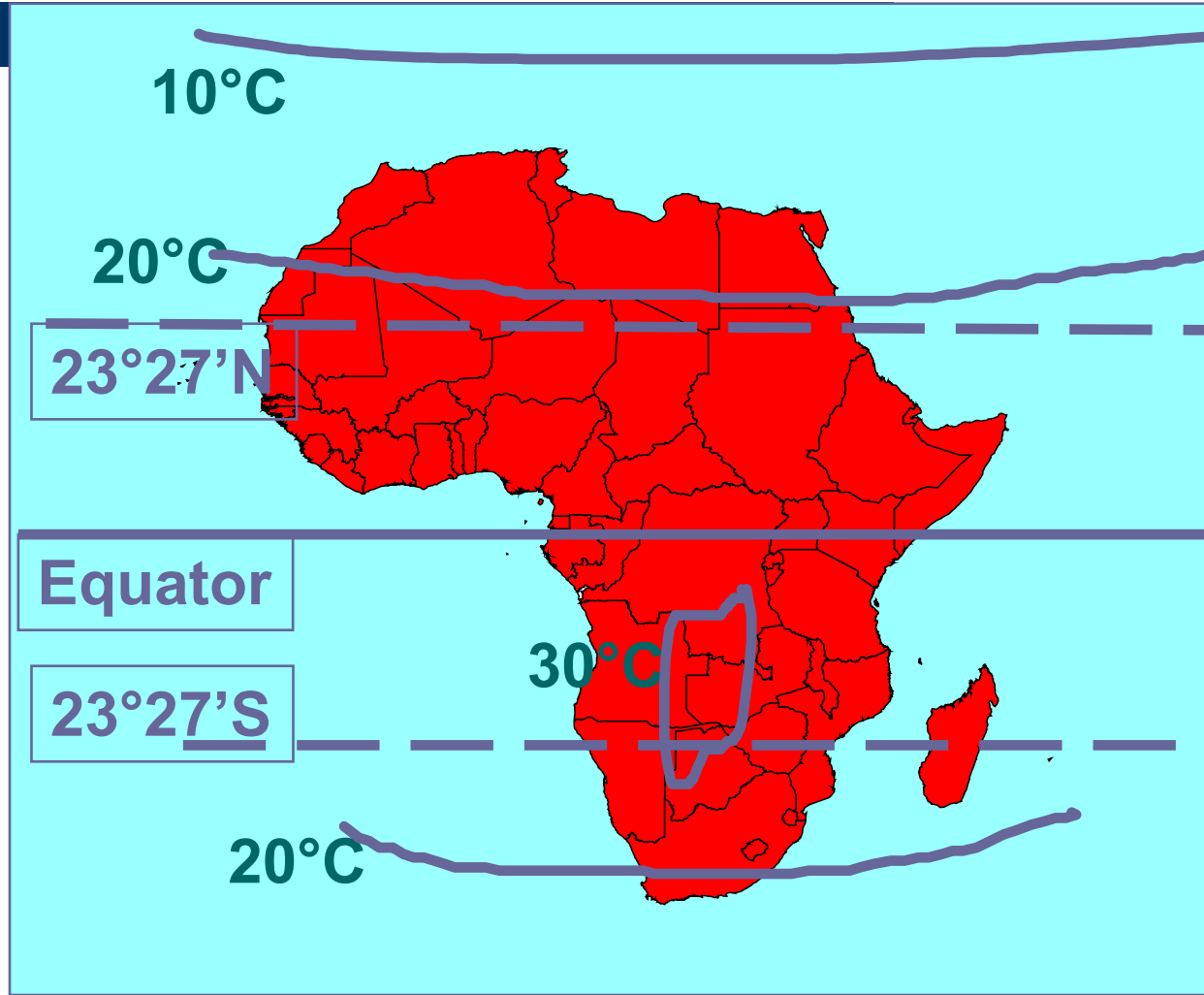
**c**



# Question 24

This isothermes pattern is typical for :

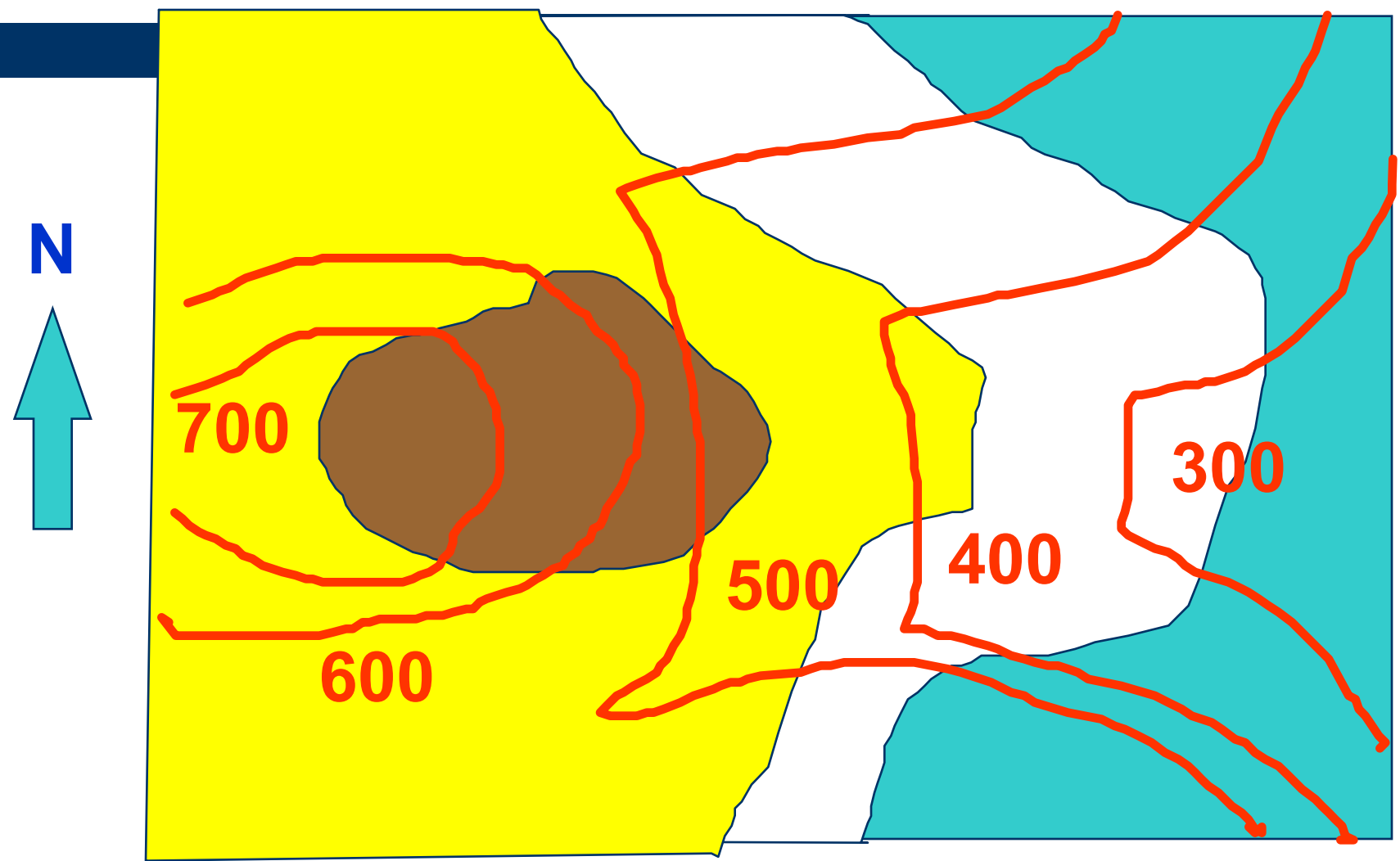
- A. April
- B. January
- C. July
- D. October



The brown layer slopes down direction:

- A. North
- B. South
- C. West
- D. East

# Question 25



## Question 26

This map of North-America is:

- A. *a conic projection*
- B. *an azimuthal projection*
- C. *a cylinder projection*



# Question 27



This landscape is:

- A. *created as a result of the ice ages*
- B. *created as a result of wave erosion*
- C. *created by lava flow.*



# Question 28

What combination is correct:  
*A, B or C?*

Thailand, tourism and infrastructure: supply of fresh water and drainage of waste water



**A** = Supply of fresh water for the tourism center

**B** = Drainage of waste water from the tourism center

 Prevailing water current direction

 Beach

correct = Y Not correct = N	<b>A</b>	<b>B</b>	<b>C</b>
This water infrastructure causes a decline of natural sand supply tot the beach:	<b>N</b>	<b>Y</b>	<b>N</b>
This drainage system has a negative influence on the water quality along the beach:	<b>N</b>	<b>N</b>	<b>Y</b>
It would be more sensible to use B for the supply of fresh water, and A for the drainage of the waste water:	<b>Y</b>	<b>N</b>	<b>N</b>

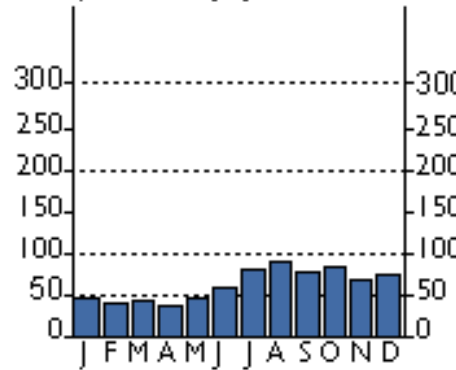
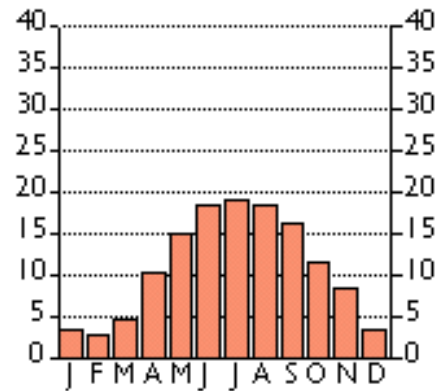
# Question 29

You want to do **2** citytrips of a week: Amsterdam and Athens. You have three weeks of holiday: a week in May, a week in July and a week in September. You want to have a minimal chance of rain and to avoid temperatures exceeding 20 C.

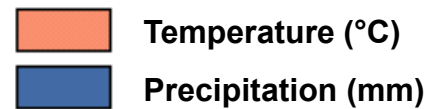
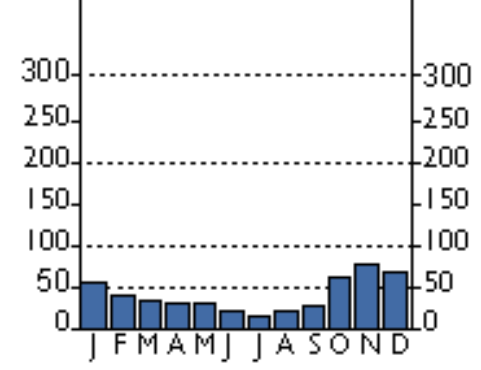
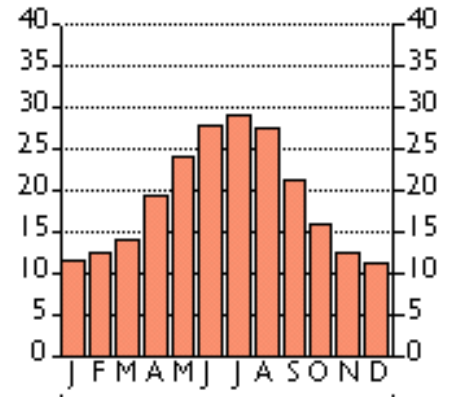
What is your choice?

- A. *Athens: May, Amsterdam: July*
- B. *Amsterdam: May, Athens: September*
- C. *Amsterdam: May, Athens: July*

### Amsterdam



### Athens





## Question 30

A British student bio-engineering wants to prepare herself to work (and live) in the indicated region (see map) of Africa

What courses should she follow to be prepared for living and working in that region?



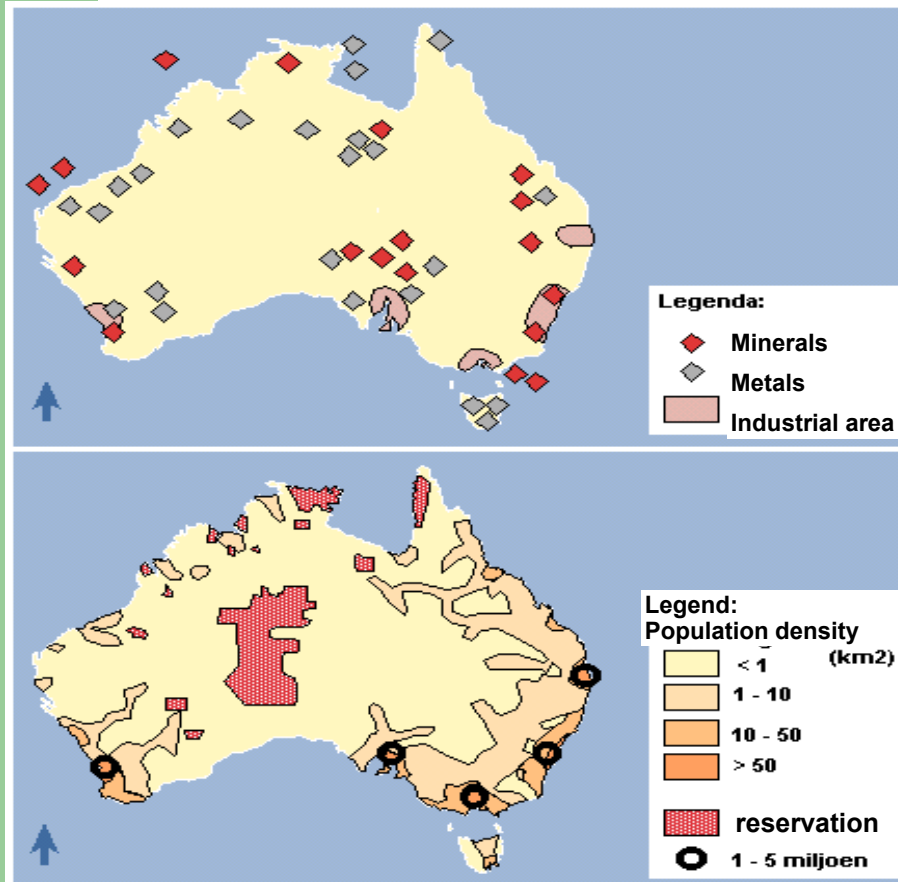
- A. *Techniques cultivating bananas, Tropical forestry, French language, introduction Islam*
- B. *Technique cultivating bananas, French language, irrigation techniques, Tropical forestry*
- C. *Irrigation techniques, Introduction Islam, German language, Technique cultivating olives*
- D. *Nomadic cattle breeding, French language, Irrigation techniques, Introduction Islam*

# Question 31

What combination is correct:

*A, B or C?*

With these two maps you can conclude:



Correct = Y Not correct = N	<b>A</b>	<b>B</b>	<b>C</b>
The Aboriginal reservations are situated outside the mineral and metal regions:	<b>Y</b>	<b>Y</b>	<b>N</b>
The mining regions in Middle-Australia have a bit higher population density:	<b>N</b>	<b>Y</b>	<b>Y</b>
The majority of the Aboriginals lives in Middle-Australia:	<b>Y</b>	<b>N</b>	<b>Y</b>

## Question 32

This is a satellite image of:

- A. *Venice*
- B. *Hong Kong*
- C. *Singapore*
- D. *Tokyo*
- E. *Oslo*



## Question 33

It is winter, the sun is setting at:

- A. *Tokyo*
- B. *Riad*
- C. *Dar Es Salaam*
- D. *Colombo*



## Question 34



This image is taken in the northern hemisphere, at a distance of 800 km northwest of an ocean. This desert extends over more than one country. At the western border lays Dzoengaria. What is the name of this desert?

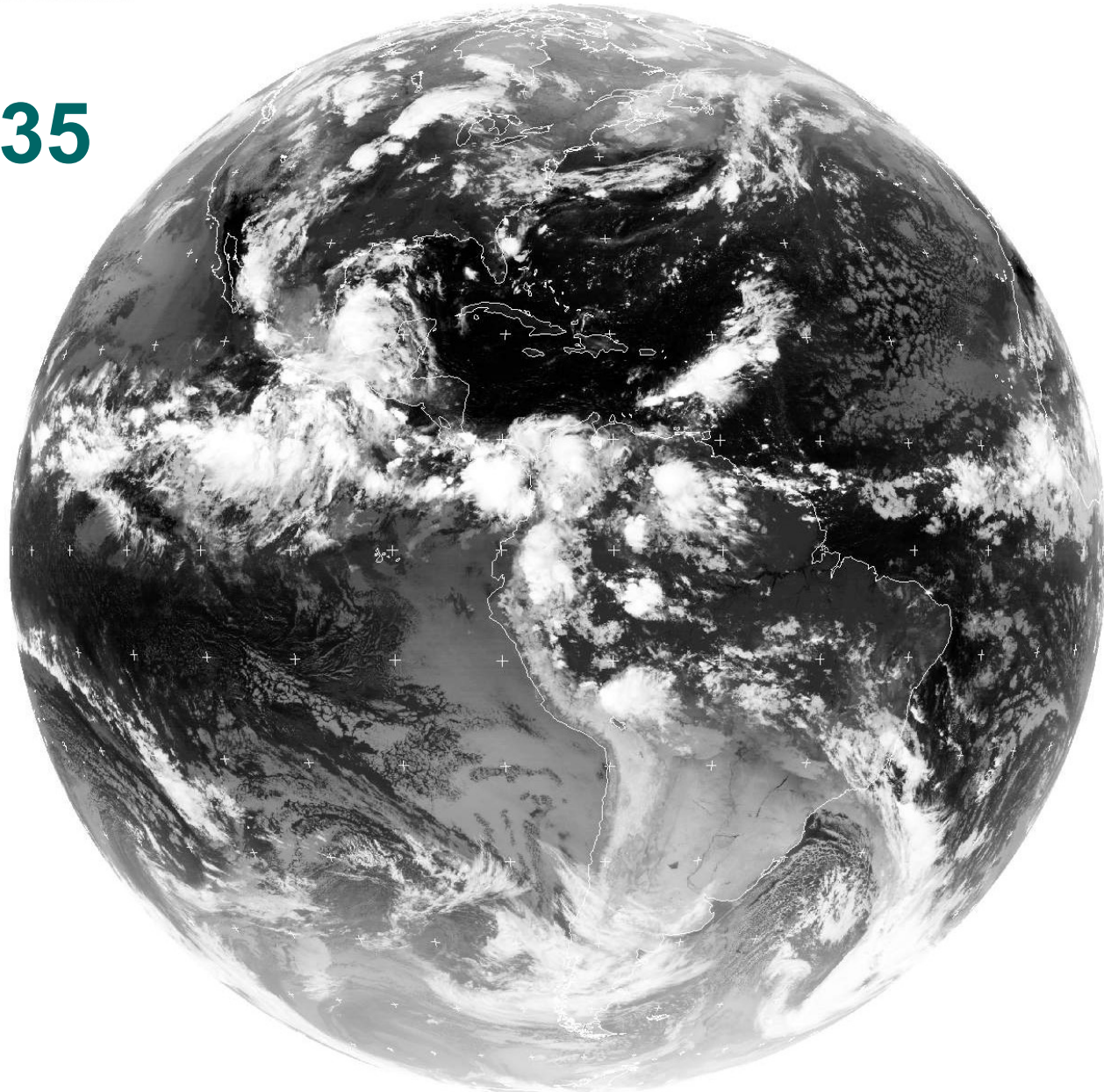
- A. *Kalahari desert*
- B. *Sahara desert*
- C. *Atacama desert*
- D. *Gobi desert*

# Question 35

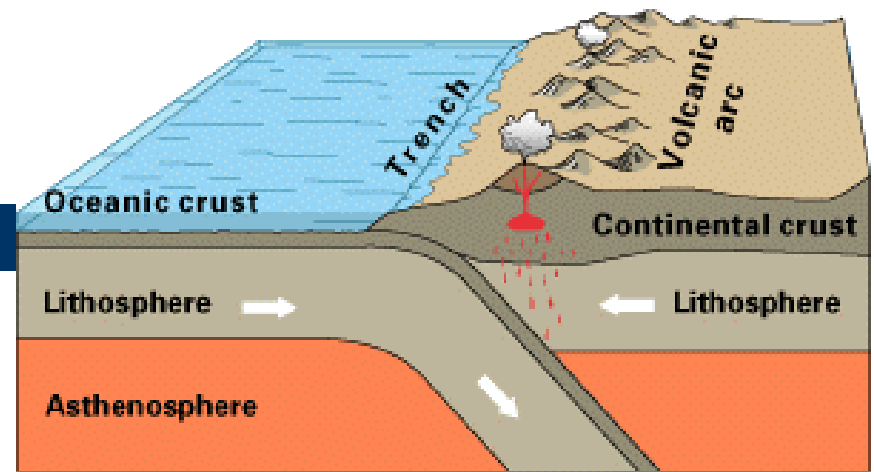
This satellite picture is taken in:

- A. *January*
- B. *March*
- C. *June*
- D. *September*

Tip: watch the  
Intertropical  
convergence zone



## Question 36



Oceanic-continental convergence

The mountains in the ..... are formed in this way.

- A. *African continent (Atlas)*
- B. *European continent (Alps)*
- C. *South American continent (Andes)*
- D. *Asian continent (Himalaya)*

## Question 37

This photo shows the development of a harbour:

- A. *On the northwest coast of Portugal*
- B. *On the northwest coast of Cyprus*
- C. *On the southwest coast of Tasmania*
- D. *On the southwest coast of Gabon*





# Question 38



Near Lake Mývatn on Iceland these strange wholes occur.

They are caused by:

- A. *Glacial erosion*
- B. *River erosion*
- C. *Wind erosion*
- D. *Lava flow*



## Question 39

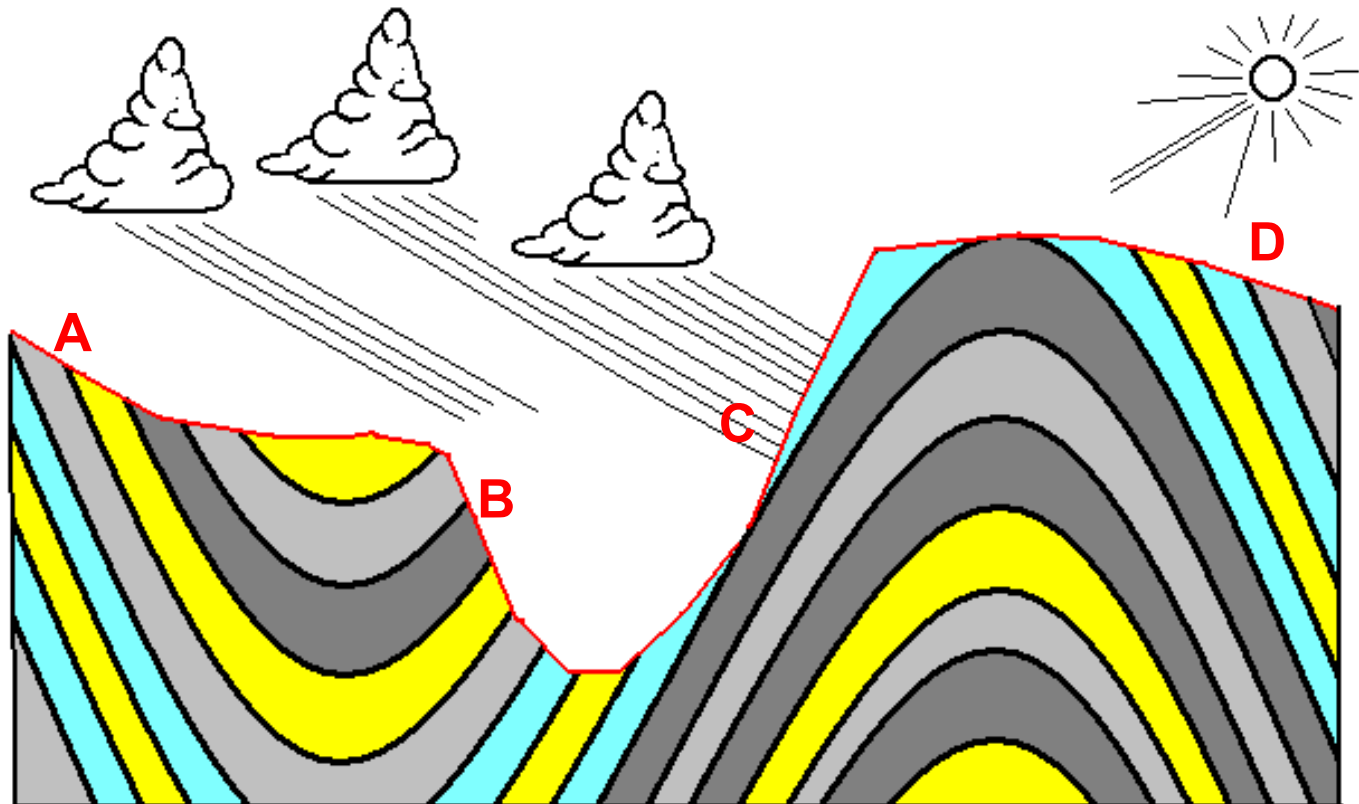
What is hidden behind the abbreviation NAFTA?

- A. *Association of countries exporting crude oil*
- B. *Zone of free trade in North America*
- C. *Cooperation agreement between following cities: Naples, Amsterdam, Frankfurt, Turin, Aberdeen*
- D. *UNO organisation dealing with oil prospection*



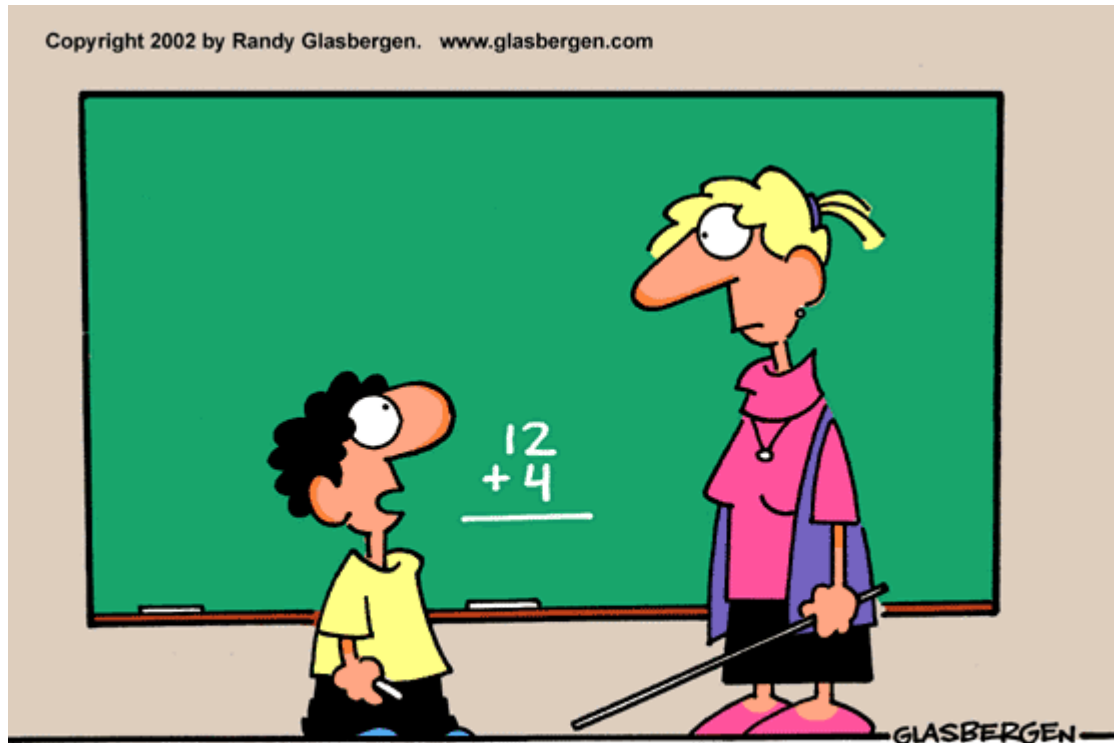
# Question 40

Locate the site most dangerous from the landslide viewpoint



# Yes, you survived it ...

Copyright 2002 by Randy Glasbergen. [www.glasbergen.com](http://www.glasbergen.com)



**“Do I get partial credit for simply having the courage to get out of bed and face the world again today?”**