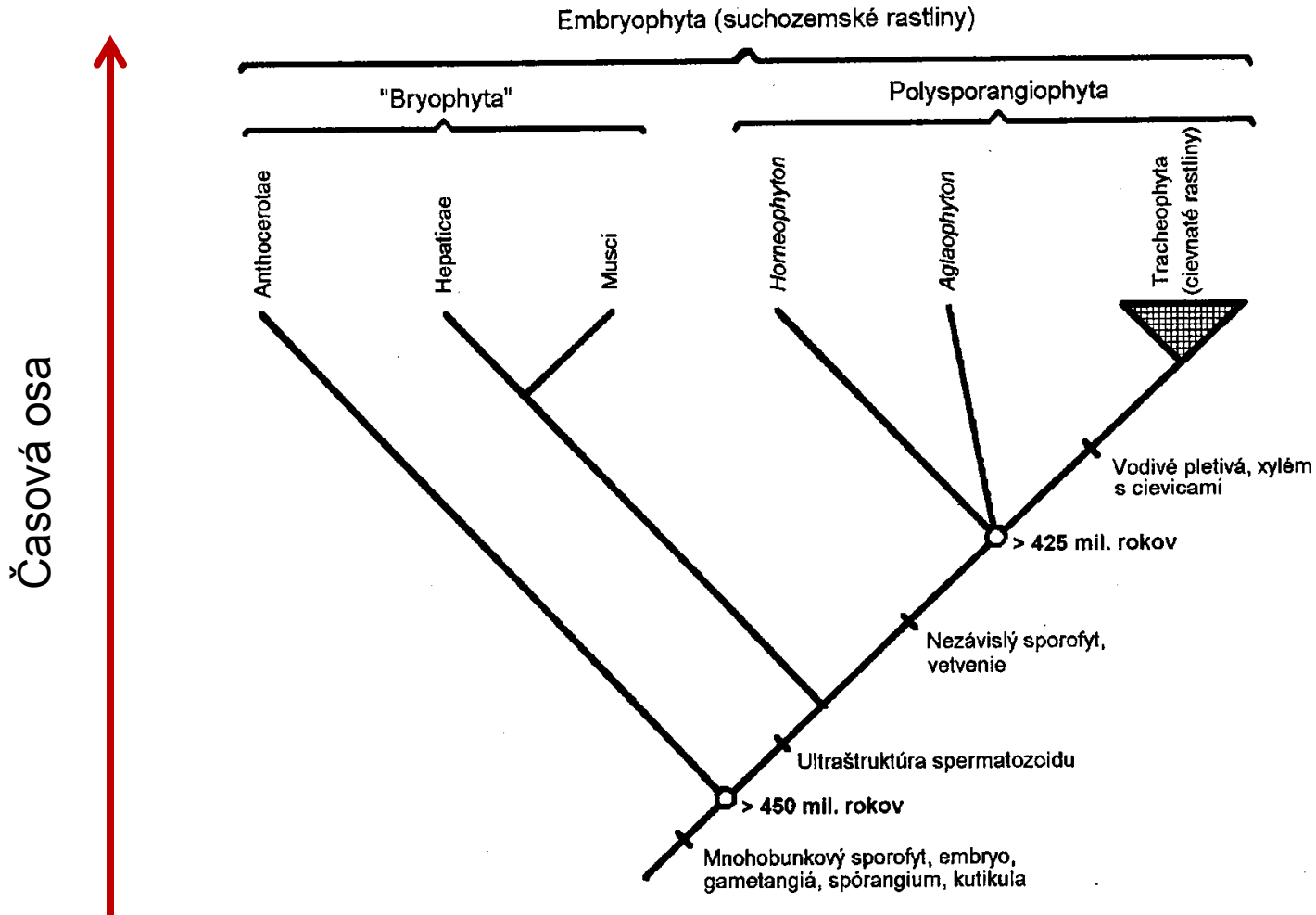
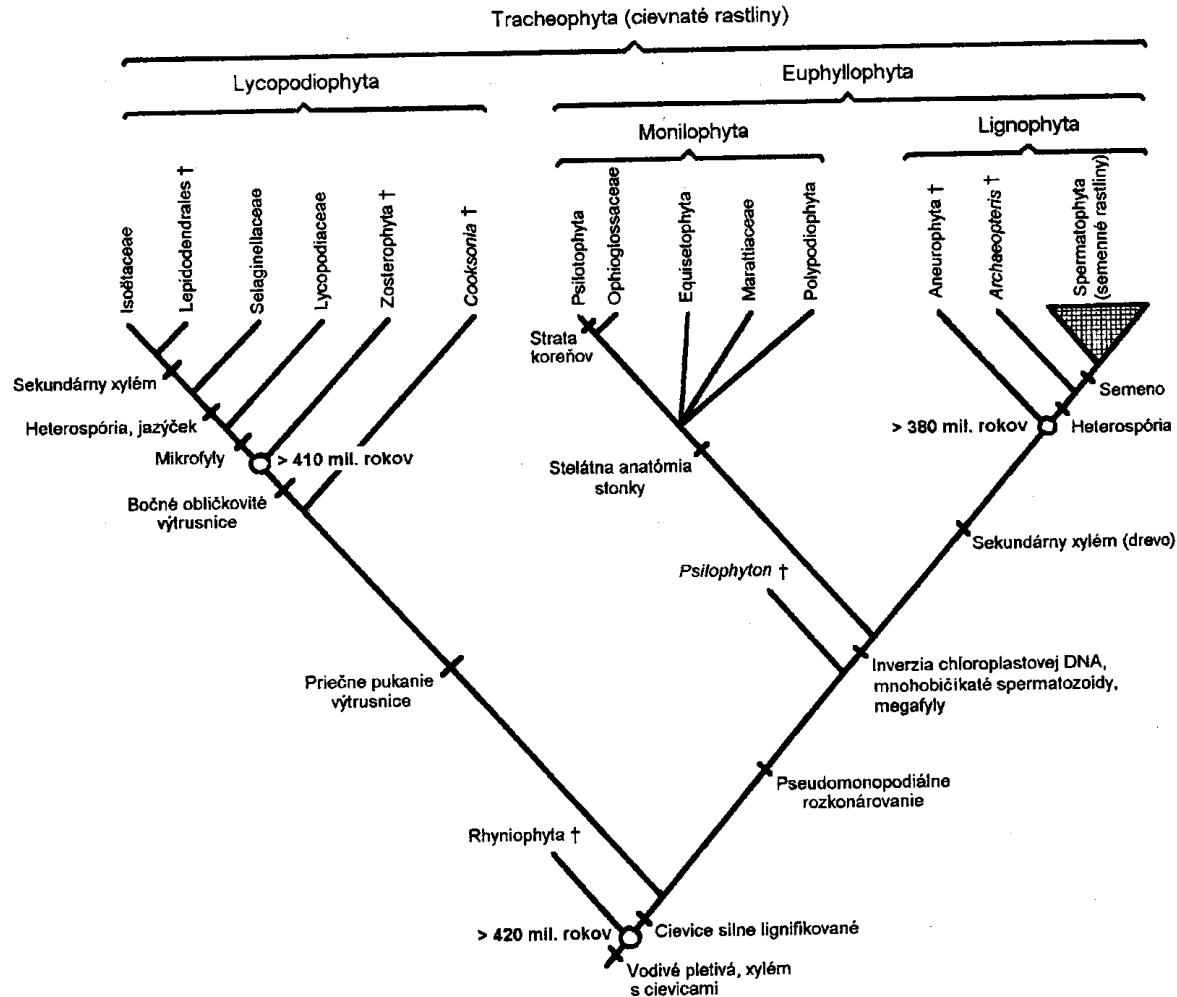


Vývoj vyšších rostlin

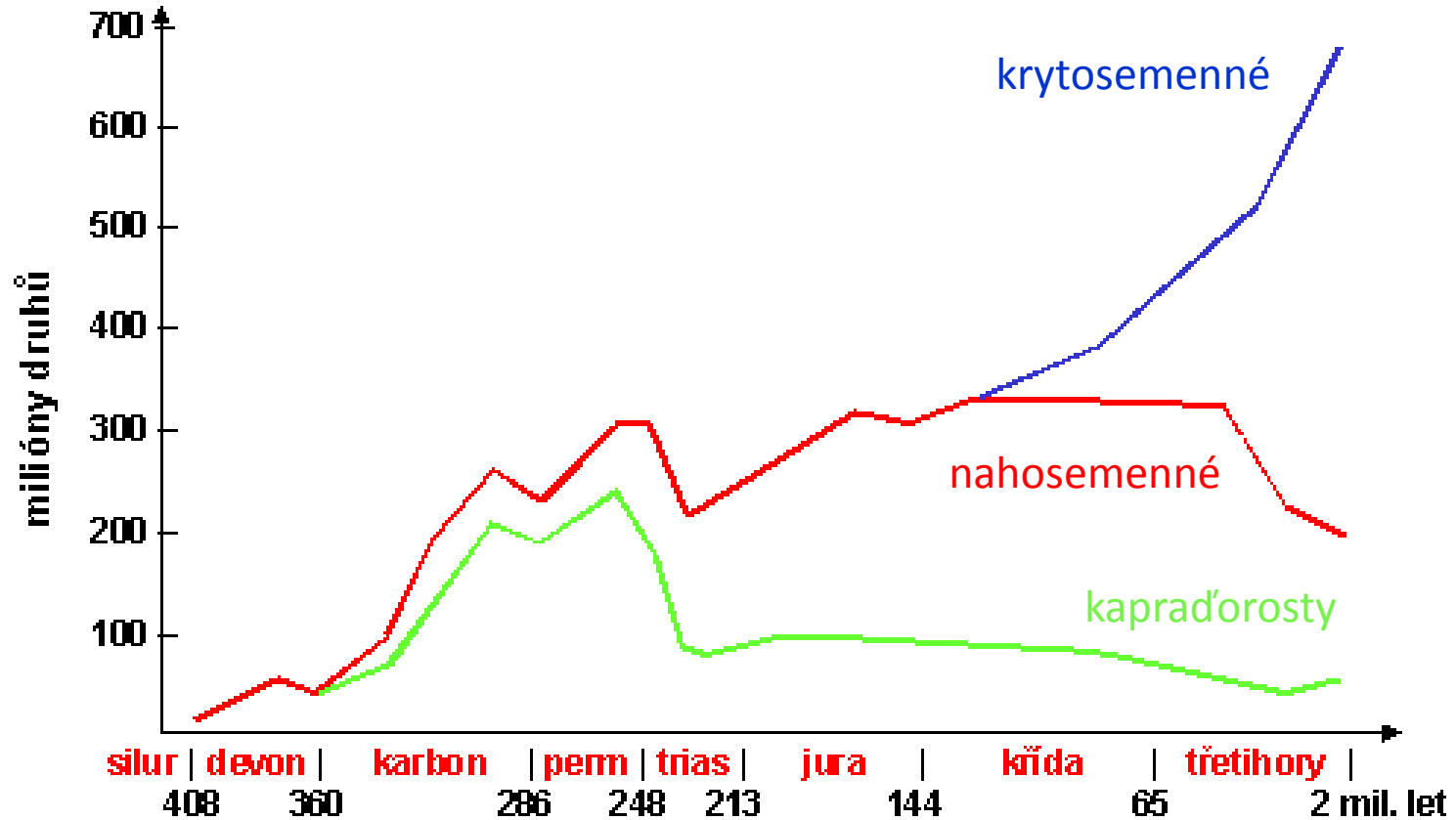


Vývoj vyšších rastlín

Časová osa



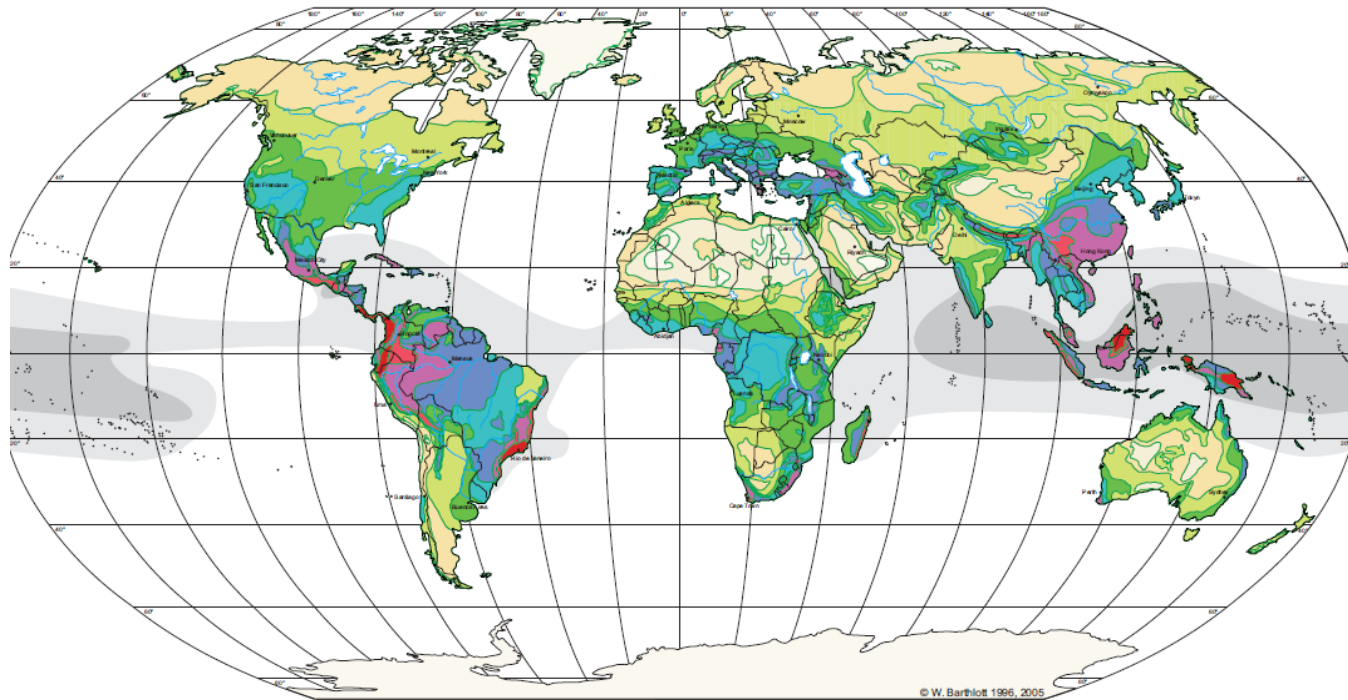
Vývoj vyšších rostlin



Signor 1990 in Crawley 1997: 599

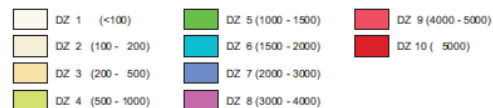
Odhady počtu vyšších rostlin

GLOBAL BIODIVERSITY: SPECIES NUMBERS OF VASCULAR PLANTS



Robinson Projection
Standard Parallels 38°N und 38°S

Diversity Zones (DZ): Number of species per 10 000km²

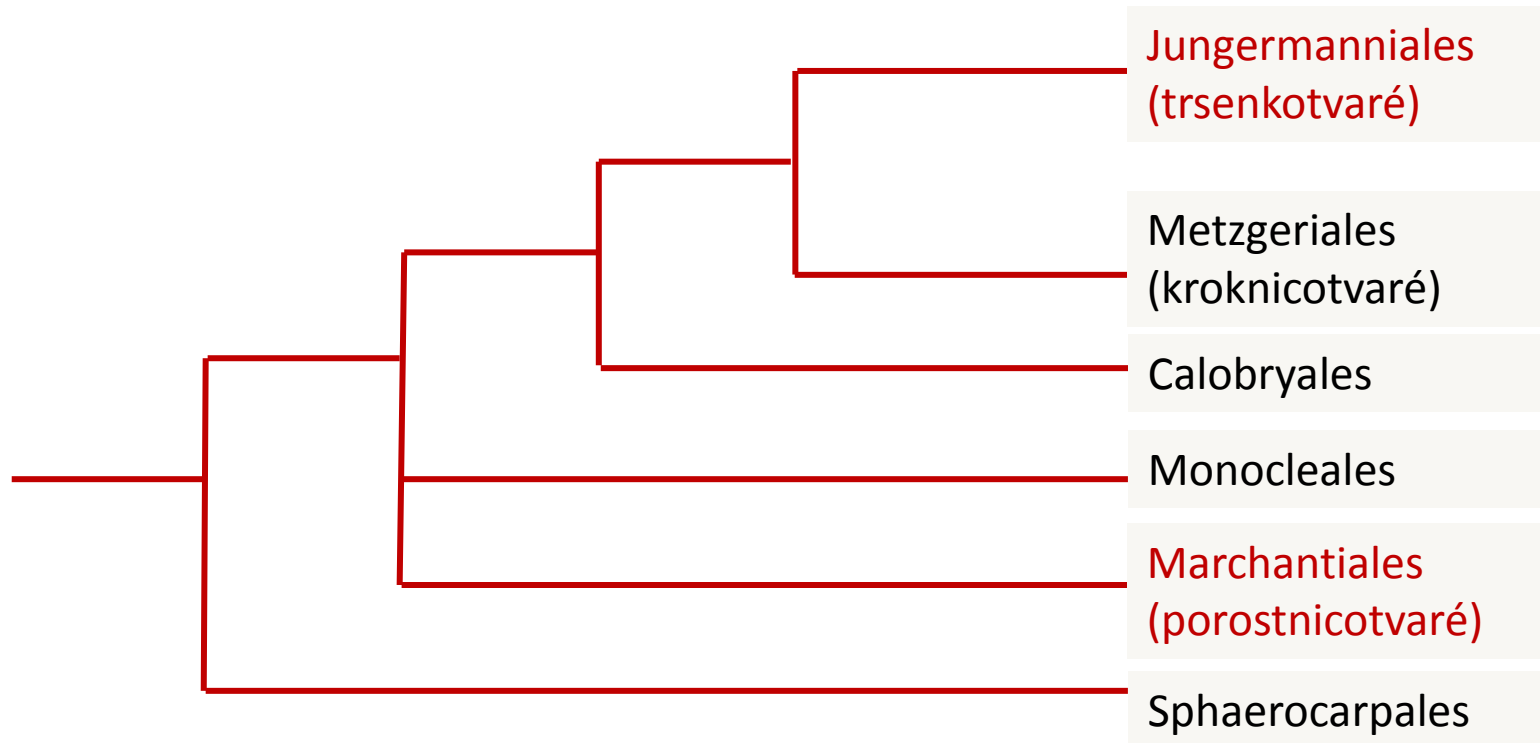


sea surface temperature

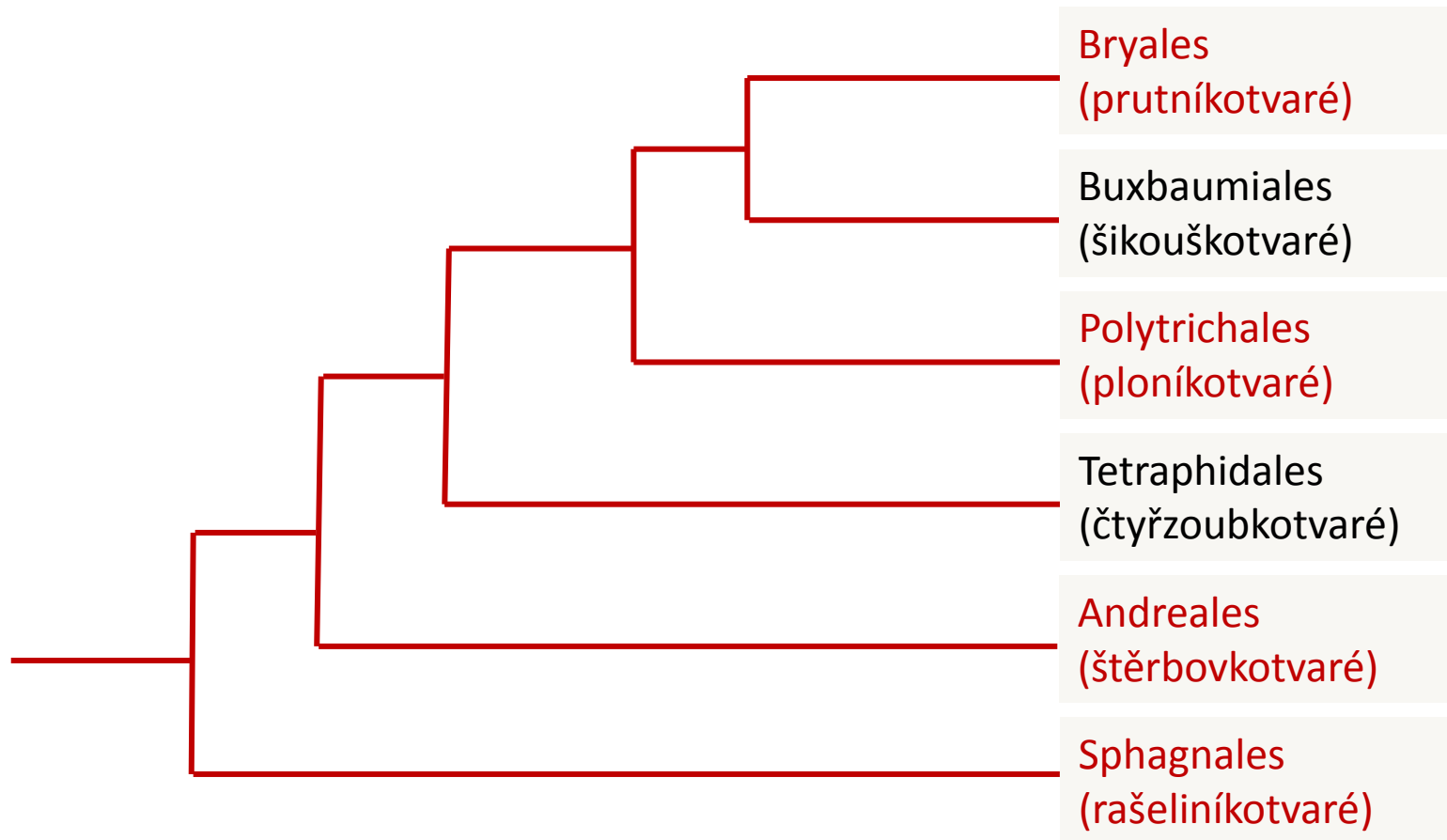


W. Barthlott, G. Ker, H. Kreft, W. Küper, D. Rafiqpoor,
& J. Muske 2005
modified after
W. Barthlott, W. Lauer & A. Pläcke 1996
Nees Institute for Biodiversity of Plants
University of Bonn

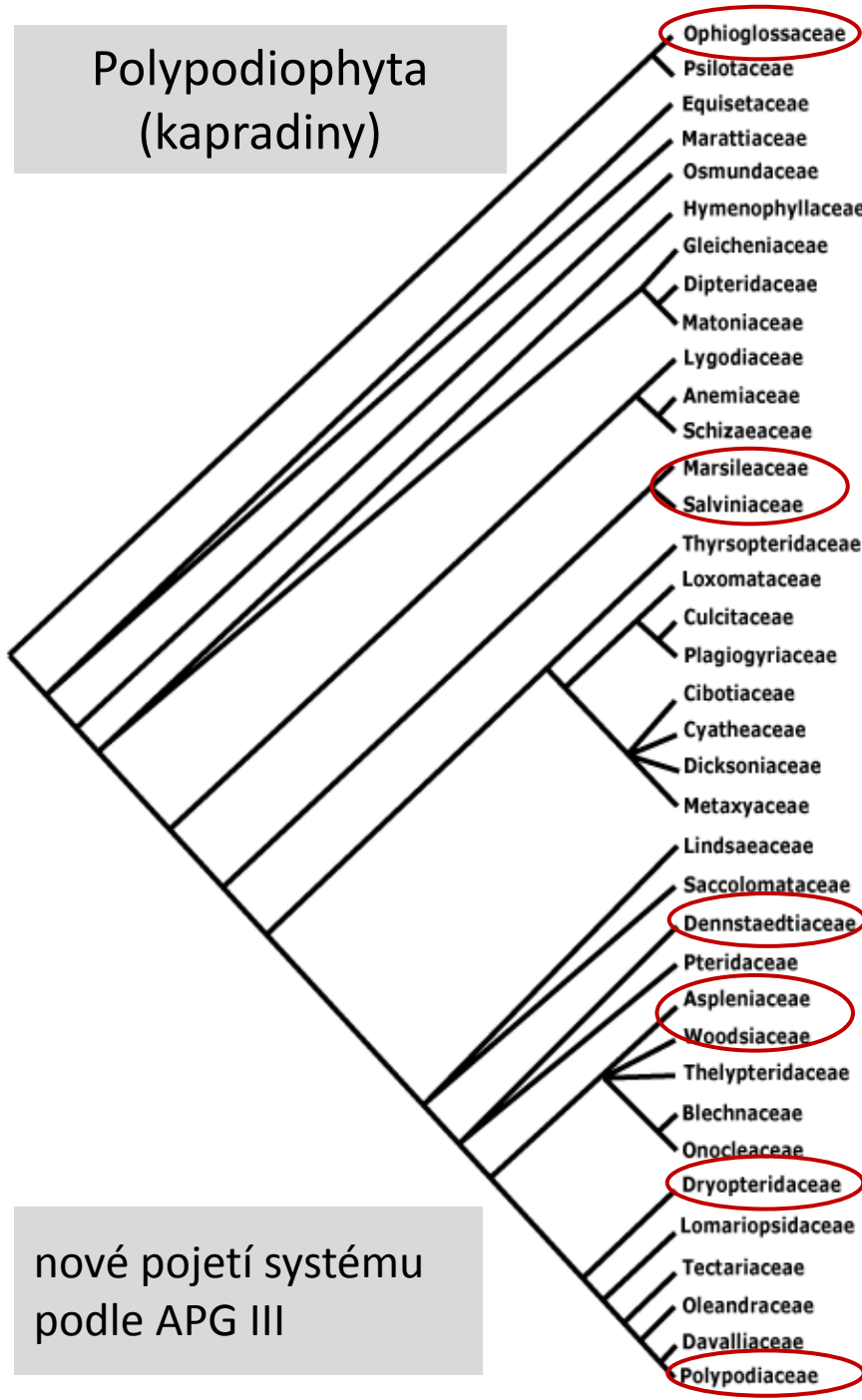
Marchantiopsida (jätrovky)



třída Bryopsida (mechy)



Polypodiophyta
(kapradiny)



Ophioglossales

Equisetales

Schizaeales

Salviniales

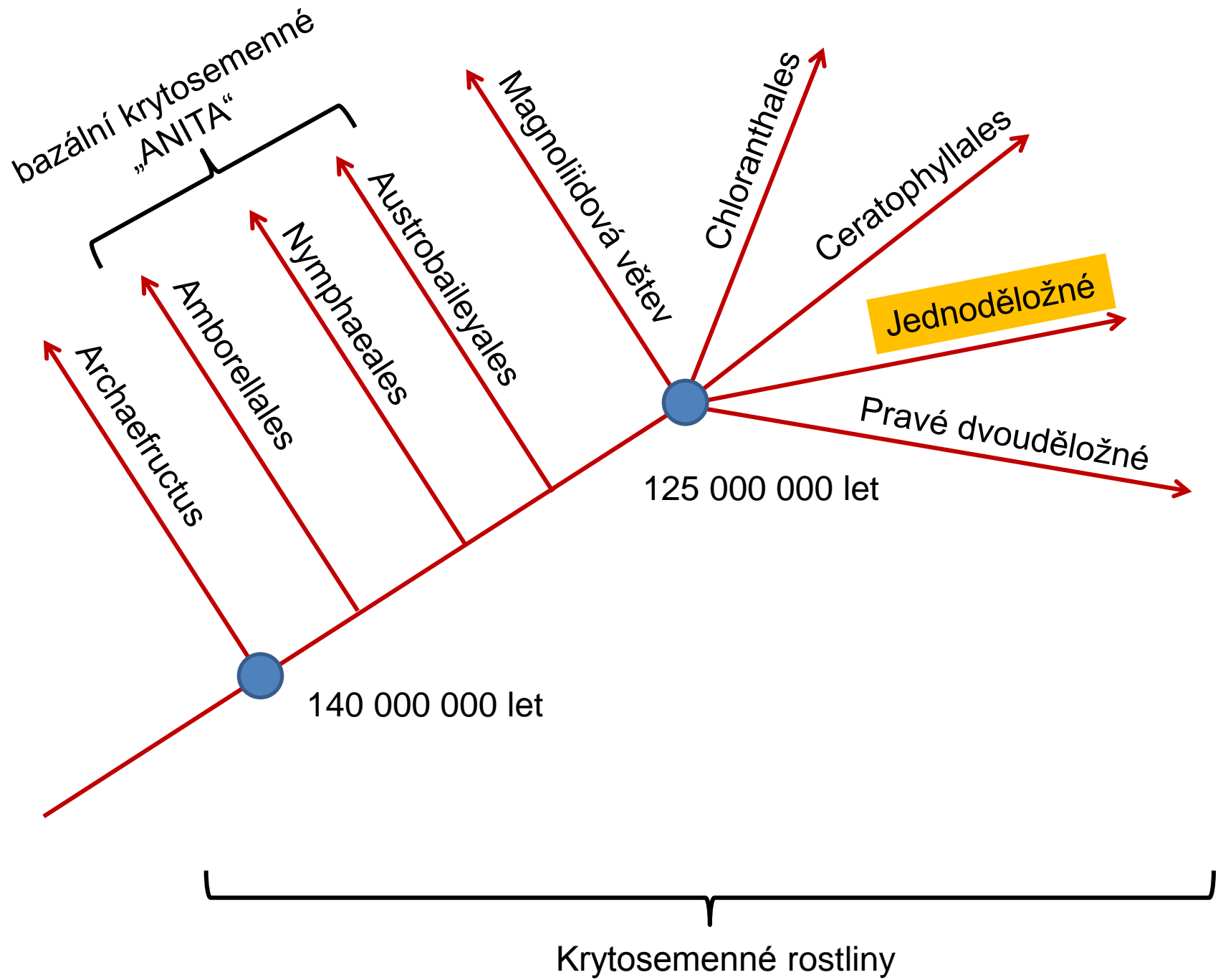
Cyatheaales

Polypodiales

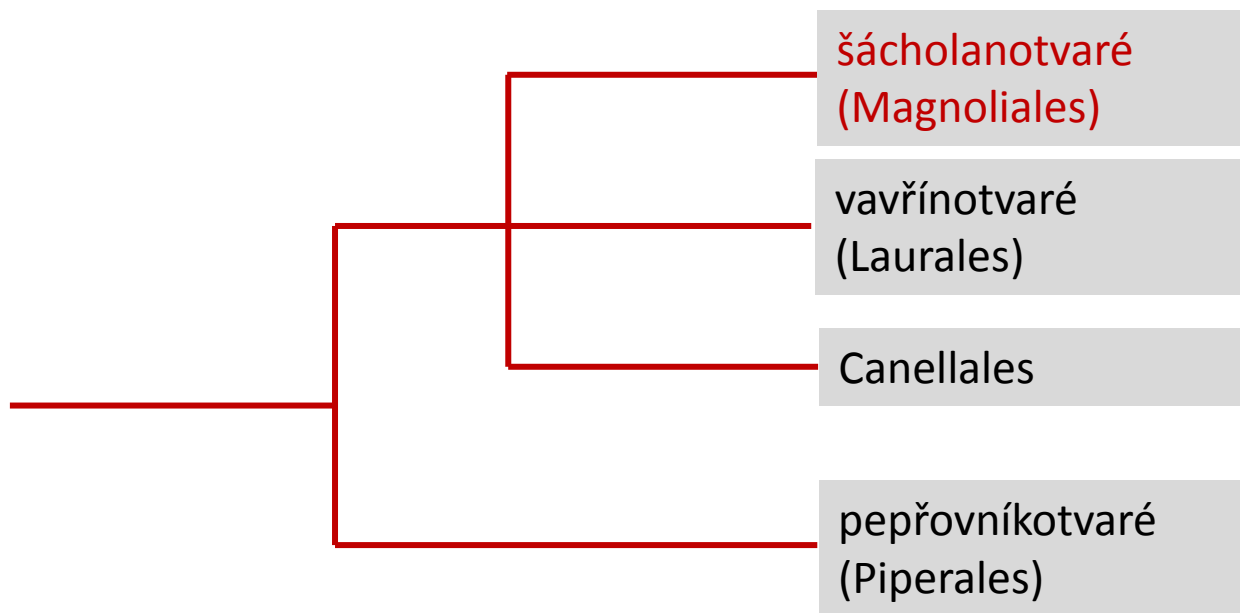
eusporangiátní

leptosporangiátní

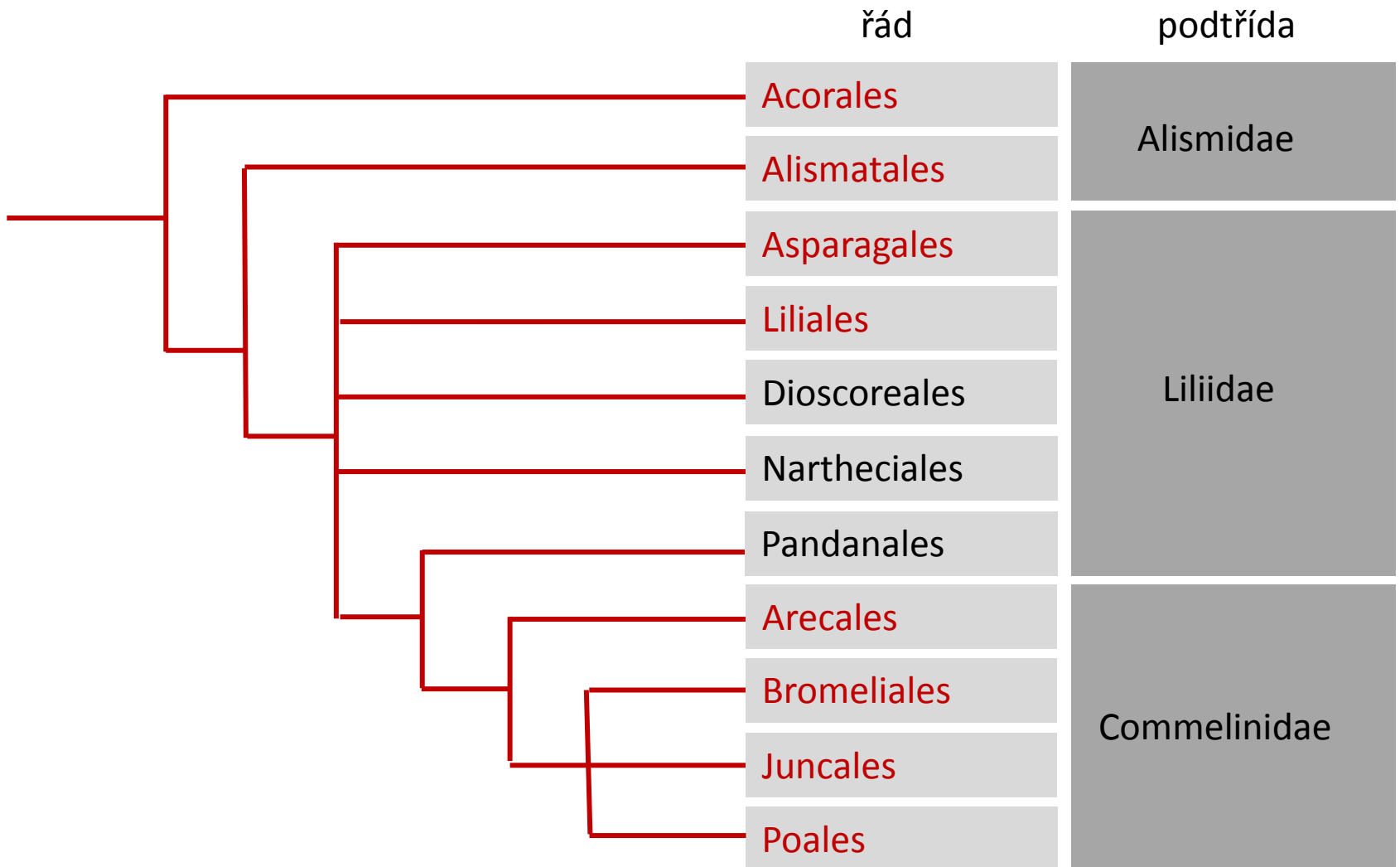
nové pojetí systému
podle APG III



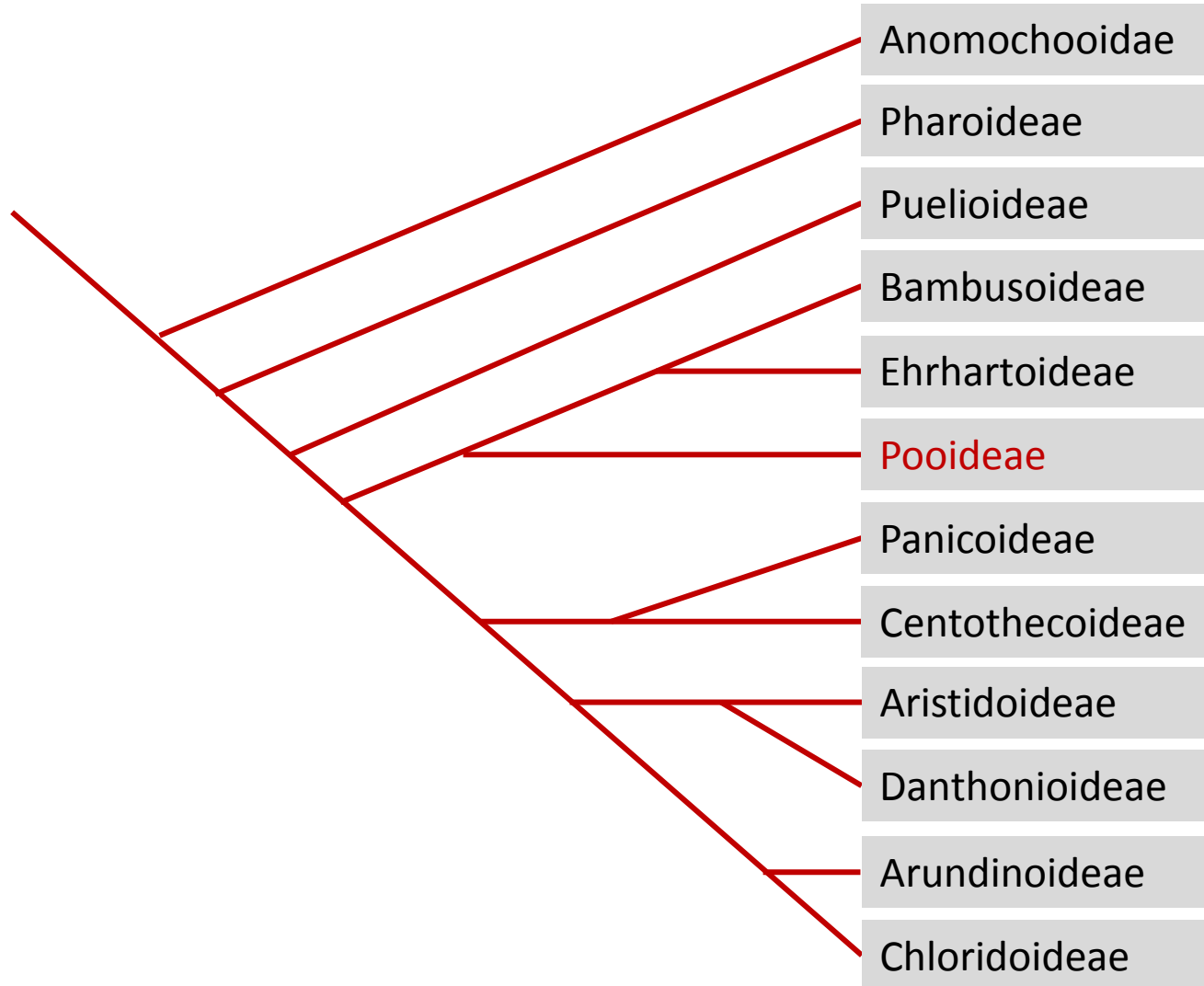
„Magnoliidová větev“



Liliopsida (jednoděložné rostliny)



Poaceae (lipnicovité)



Eudicota (dvouděložné rostliny)

jádrové trikolpátní rostliny

Caryophyllidová
větev

Vitales

Saxifragales

Santalales

Rosidová
větev

Asteridová
větev

bazální trikolpátní rostliny

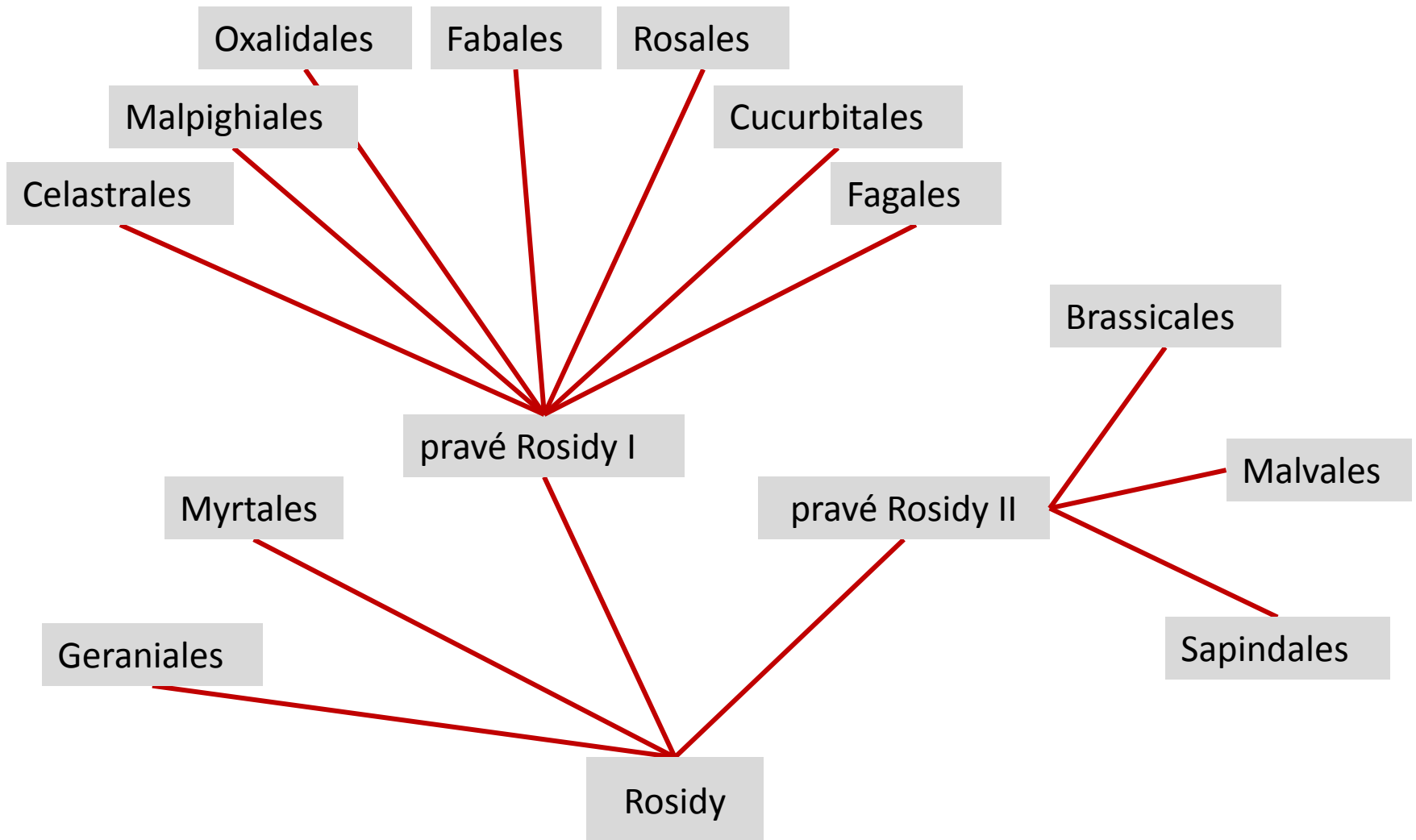
Ranunculales

Proteales

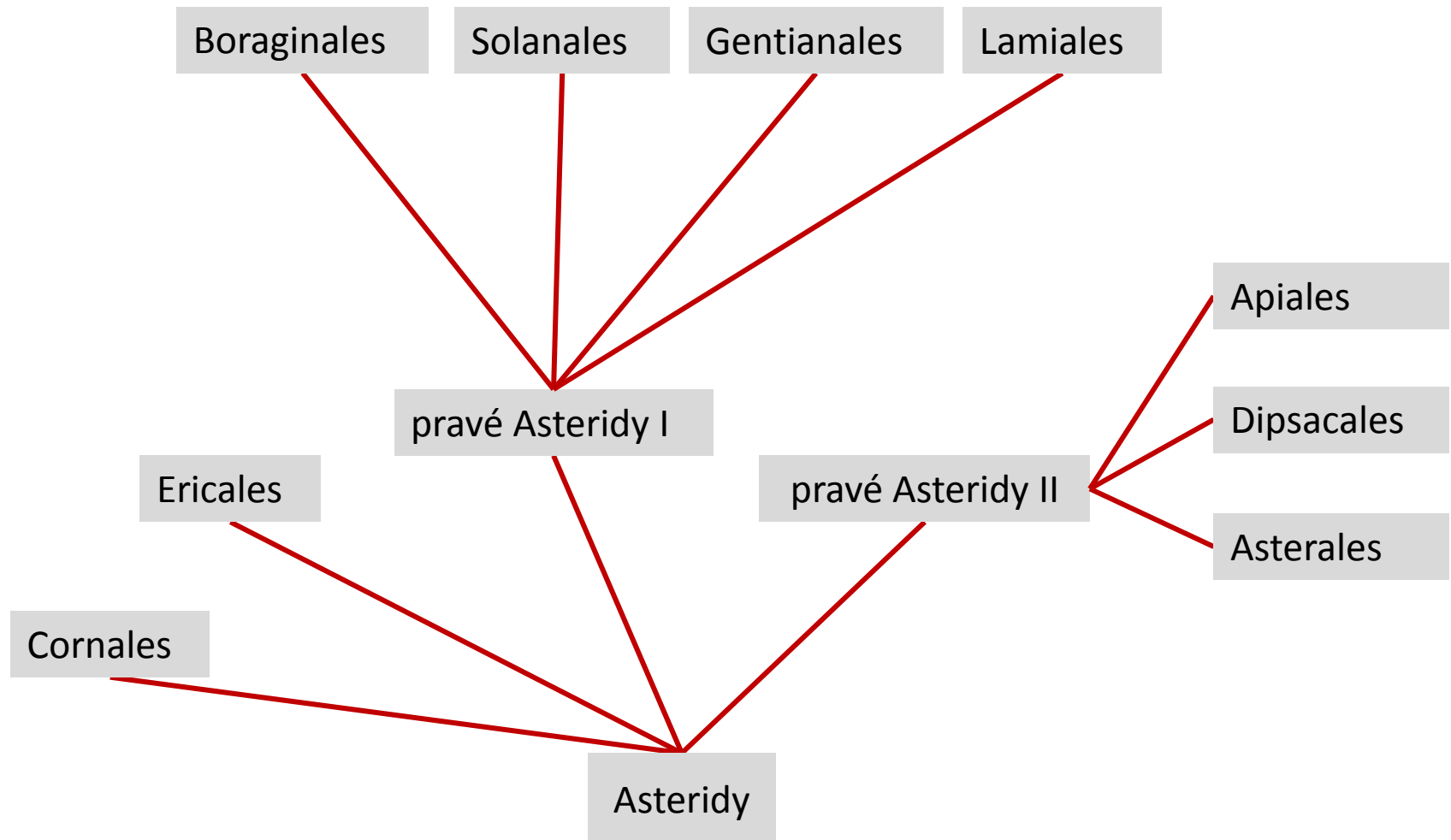
125 000 000 let

The diagram illustrates the phylogenetic relationships within Eudicota. A central red line represents the lineage, which branches into two main groups: 'jádrové trikolpátní rostliny' (core tricolpate plants) and 'bazální trikolpátní rostliny' (basal tricolpate plants). The core group includes the Caryophyllid branch, Vitales, Saxifragales, Santalales, Rosid branch, and Asterid branch. The basal group includes Ranunculales and Proteales. A divergence time of 125,000,000 years is indicated at the base of the tree.

Rosidová větev



Asteridová větev



Přehled oddělení vyšších rostlin

Vyšší rostliny (*Cormobionta*, syn. *Telomophyta*, *Embryobionta*)

Bryophyta (mechorosty) – bezcévné rostliny

cévnaté rostliny (*Tracheophyta*)

tzv. výtrusné rostliny

Rhyniophyta (ryniofyty)

Lycopodiophyta (plavuně)

Psilotophyta (psilofyty)

Equisetophyta (přesličky)

Polypodiophyta (kapradiny)

semenné rostliny

Lyginodendrophyta (kaprad'osemenné)

Cordaitophyta (kordaity)

Cycadophyta (cykasy)

Ginkgophyta (jinany)

Pinophyta (jehličnany, dřívě nahosemenné)

Gnetophyta (lianovce)

Magnoliophyta (krytosemenné)