

INCLUSIVE EDUCATION

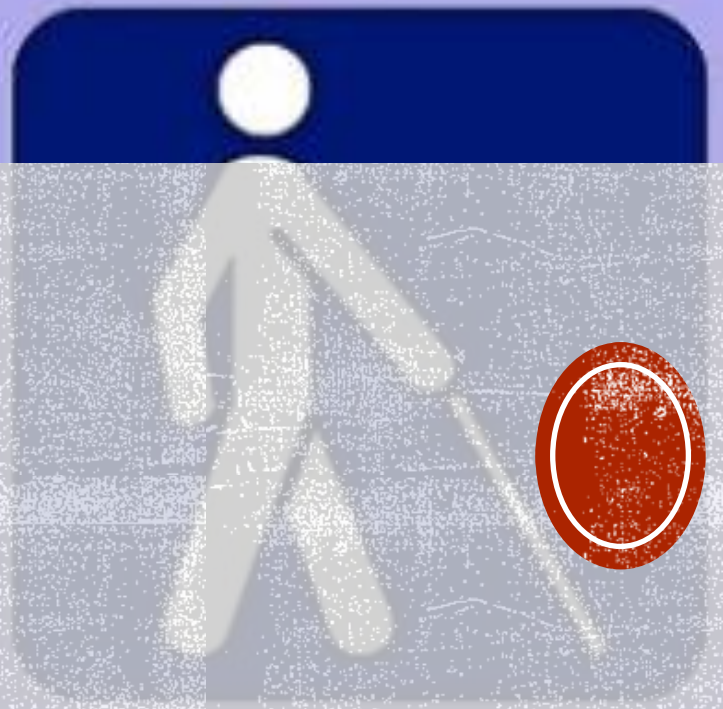
SPp003



Ivana Marova, Ph.D.

STEREOTYPE





DISABILITY?





**WHO DEFINES WORLD
HEALTH THERMINOLOGY?...**



World Health Organization

**INTERNATIONAL ORGANIZATION RESPONSIBLE FOR
HEALTH PREVENTION AND INTERVENTION**

WHAT DOES IT MEAN ?

.....

Disability

Impairment

Handicap

Special Educational
Needs



World Health
Organization

FORMER WHO TERMINOLOGY



World Health
Organization

Impairment refers to a problem with a structure or organ of the body.

Disability is a functional limitation with regard to a particular activity.

Handicap refers to an environmental factor preventing the filling of a normal life role.

WHO (1980) International Classification of Impairment,
Disabilities and Handicaps



MODELS OF DISABILITY

(RETIEF, M. & LETŠOSA, R.; 2018)

The moral/religious model of Disability:
Disability as an act of God

The Medical Model:
Disability as a Disease

The Social Model:
Disability as a socially constructed phenomenon

The Identity Model:
Disability as an identity

The Human Rights Model:
Disability as a human rights issue

The Cultural Model:
Disability as culture

The Economic Model:
Disability as a challenge to productivity

The Charity Model:
Disability as Victimhood

The Limits Model:
Disability as embodied experience



MEDICAL MODEL OF DISABILITY

Inclusion
London, 2019

The Medical Model of Disability



This is a diagram of the traditional Medical Model of Disability, which the Social Model was developed to challenge.

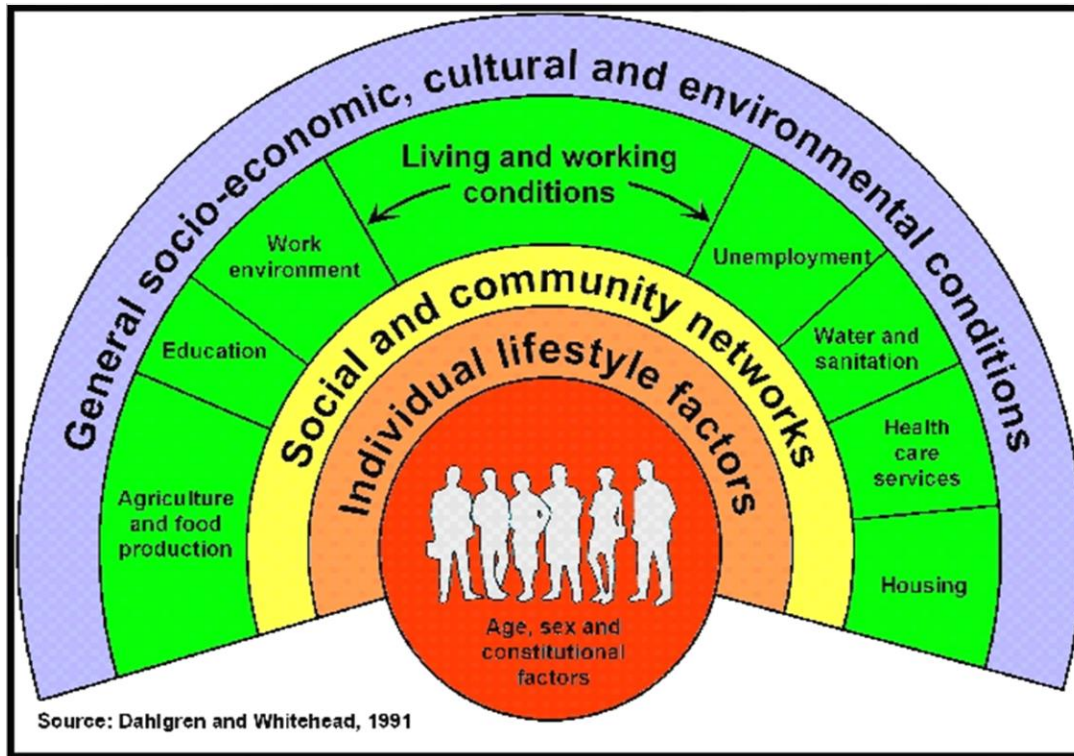




DISABILITY (WHO, 2020)

- Disabilities is an **umbrella term, covering impairments, activity limitations, and participation restrictions.**
 - An **impairment** is a problem in body function or structure;
 - An **activity limitation** is a difficulty encountered by an individual in executing a task or action;
 - while a **participation** restriction is a problem experienced by an individual in involvement in life situations.

DISABILITY (WHO, 2019)



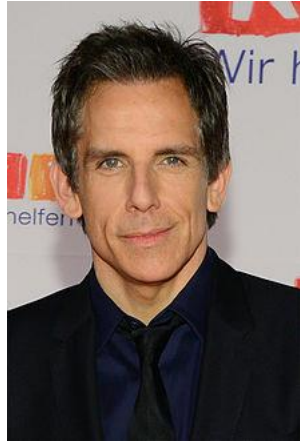
- Disability is thus **not just a health problem**. It is a complex phenomenon, reflecting the interaction between features of a person's body and features of the society in which he or she lives. Overcoming the difficulties faced by people with disabilities requires interventions to remove environmental and social barriers.



SO CALLED VISIBLE



SO CALLED INVISIBLE



Better health for people with disabilities



World Health Organization

1 Over **BILLION** people globally experience disability



1 in **7** people

People with disabilities have the same general health care needs as others

But they are:

2x more likely to find health care providers' skills and facilities **inadequate**

3x more likely to be **denied** health care

4x more likely to be treated **badly** in the health care system



1/2 of people with disabilities cannot afford health care

They are: **50%** more likely to suffer catastrophic health expenditure



These out-of-pocket health care payments can push a family into poverty

Rehabilitation and assistive devices can enable people with disabilities to be independent



970 MIL

people need glasses and low vision aids



75 MIL

people need a wheelchair; Only **5-15%** have access to one

466 MIL

people have disabling hearing loss



Production of hearing aids only meets:

10% of global need **3%** of developing countries' needs

Making all health care services **accessible** to people with disabilities is **achievable** and will reduce unacceptable **health disparities**