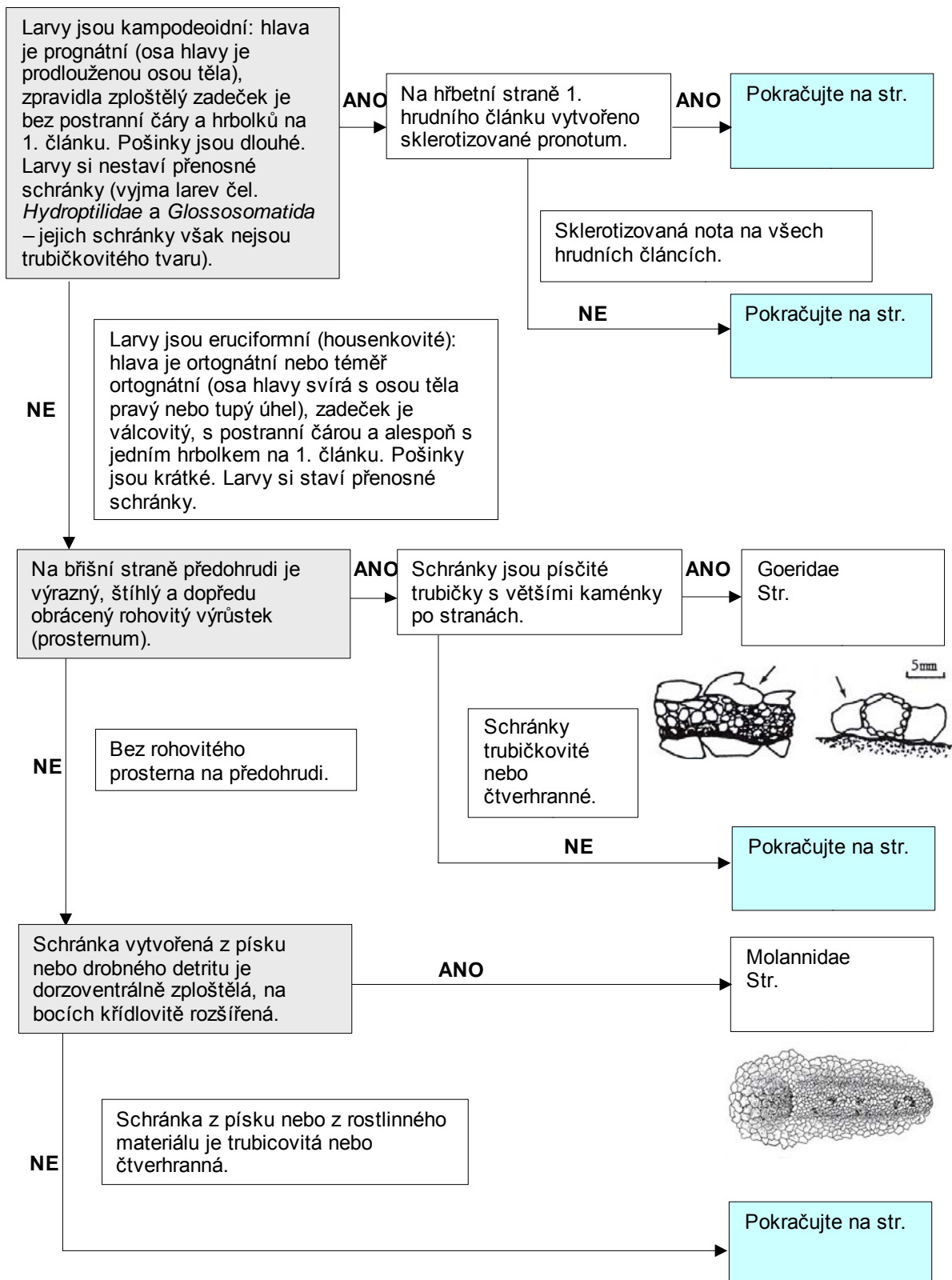
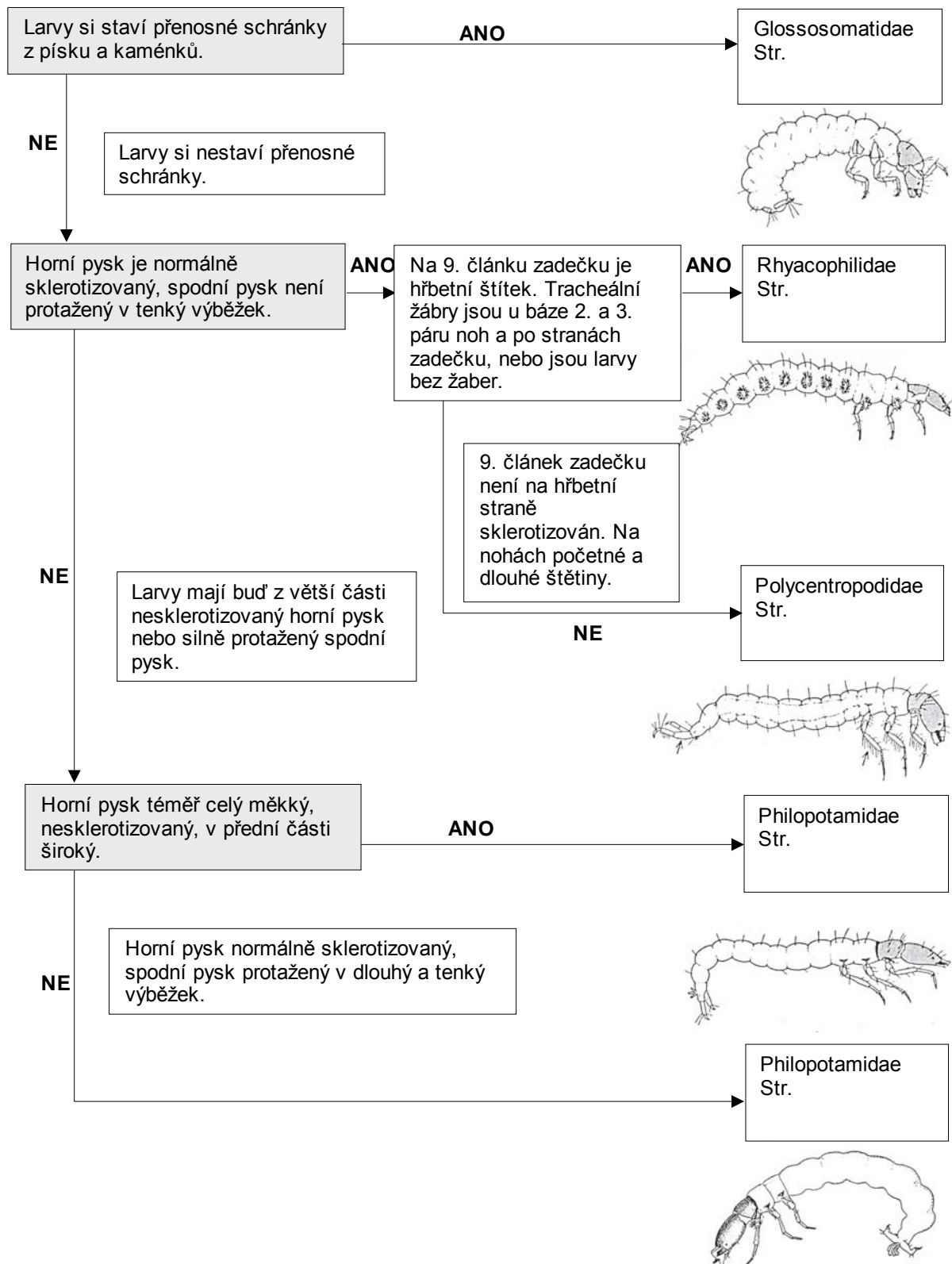


Chrostíci (Trichoptera)



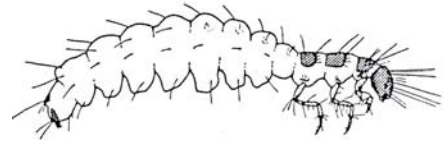


7

Přenosné schránky larev jsou z různého materiálu (sekret, rostlinné zbytky, minerálie), zploštělé laterálně nebo dorzoventrálně. Pošinky jsou krátké. Tracheální žábry nepřítomny, nebo jsou pouze na 9. článku zadečku a u báze pošinkových drápů.

ANO

Hydroptilidae
Str.



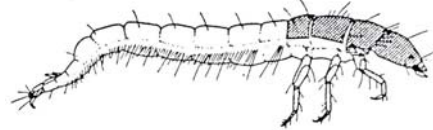
Larvy bez přenosných schránek, pošinky dlouhé, výrazné.

NE

Larvy jsou bez tracheálních žaber. Pošinky jsou bez svazečků štětín.

ANO

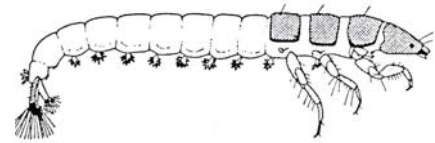
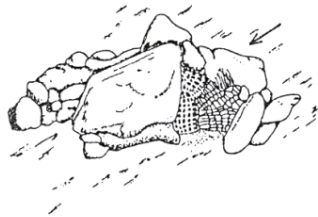
Ecnomidae
Str.



NE

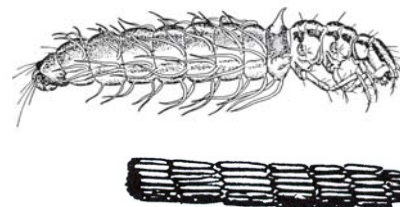
Tracheální keříčkovité žábry jsou u báze středních a zadních končetin a na člancích zadečku. Pošinky s výrazným svazečkem štětín.

Hydropsychidae
Str.



Hlava svírá s osou těla tupý úhel. Tělo je poněkud dorzoventrálně zploštělé. Pouze předohruď je celá sklerotizovaná. Na středohrudi u některých druhů dvě malá sklerotizovaná políčka. Trubicovité schránky jsou vytvořeny z rostlinných částic, uspořádaných spirálovitě nebo prstěnitě.

ANO

Phryganeidae
Str.

NE

Hlava svírá s tělem pravý úhel, tělo je válcovité. Na předohrudi i středohrudi vytvořena dobře sklerotizovaná nota. Schránky různého typu a z různého materiálu.

Na 1. článku zadečku jsou pouze boční kožovité hrbolky. Schránky obvykle čtverhranné.

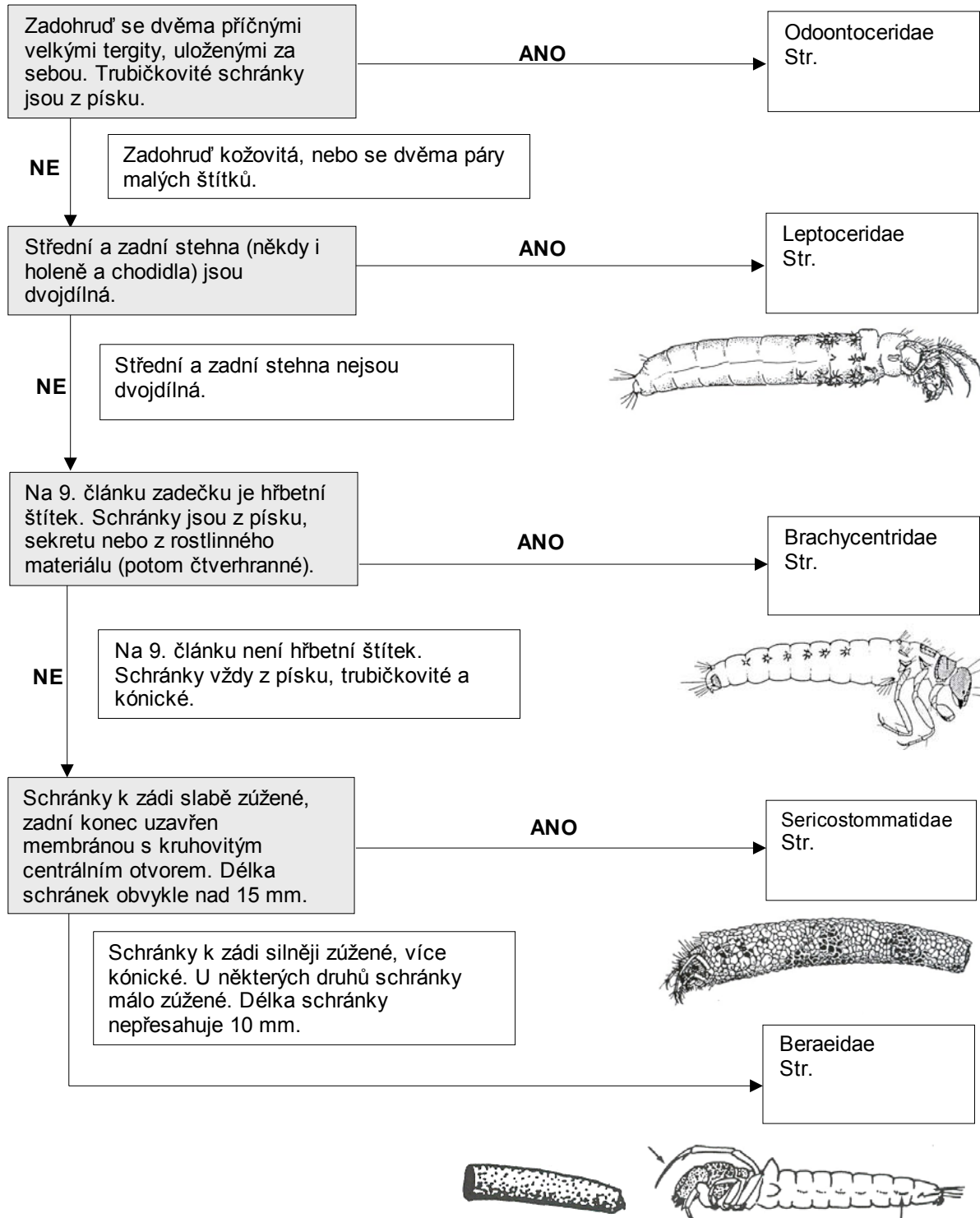
ANO

Lepidostomatidae
Str.

NE

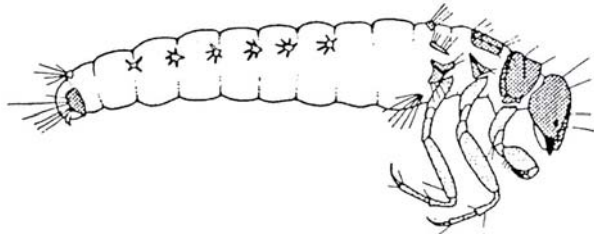
Na 1. článku zadečku jsou pouze dva boční a jeden hřbetní hrbolky. V zadní části frontoklypea je kresba ve tvaru trojúhelníka, složená z teček. Schránky jsou různého tvaru, většinou a mírně kónické, někdy trojhranné nebo dorzoventrálně zploštělé, nikdy však čtverhranné.

Limnephilidae
Str.

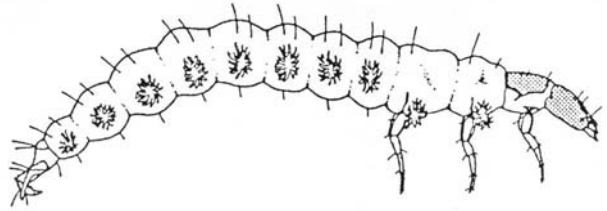


Základní typy larev chrostíků

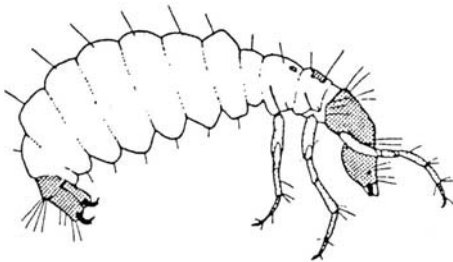
Brachycentridae



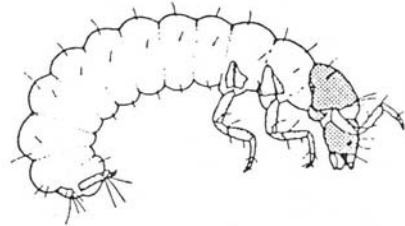
Rhyacophilidae



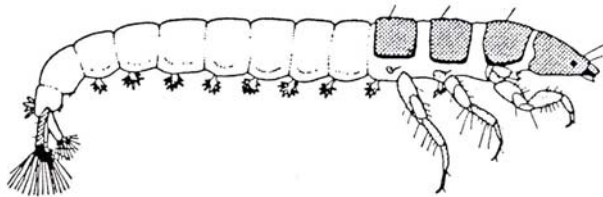
Agapetus (Glossomatidae)



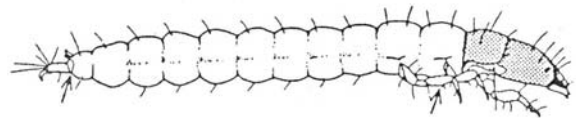
Glossosoma (Glossosomatidae)



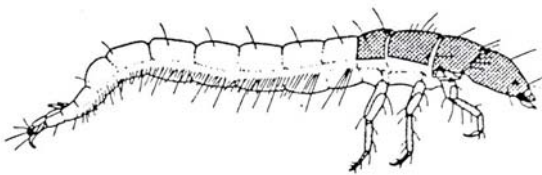
Hydropsychidae



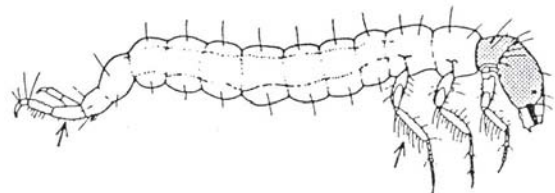
Psychomyiidae



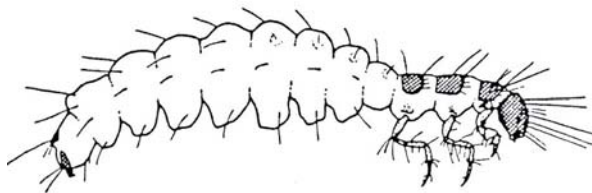
Ecnomidae



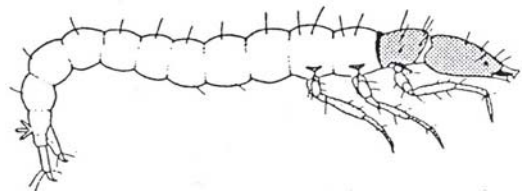
Polycentropodidae



Hydroptilidae

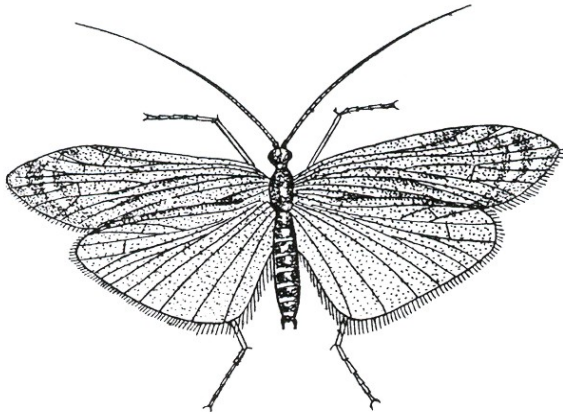


Philopotamidae

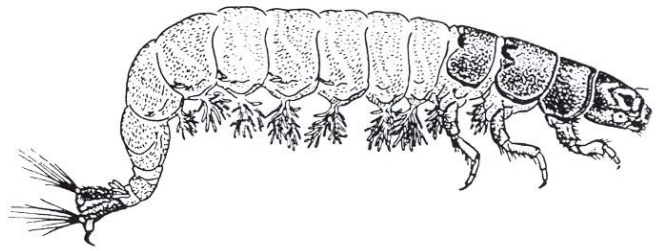


čeleď: *Hydropsychidae*

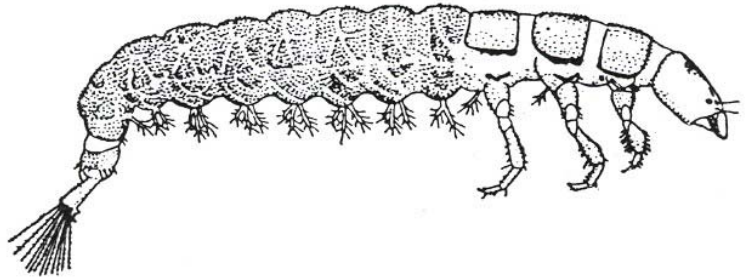
Hydropsyche ornatula (imago)



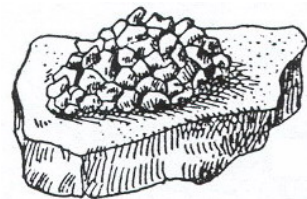
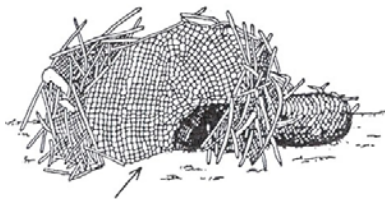
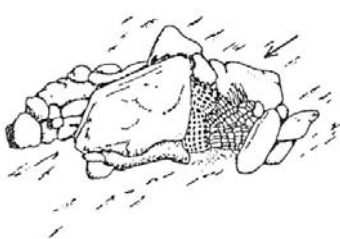
Hydropsyche sp.



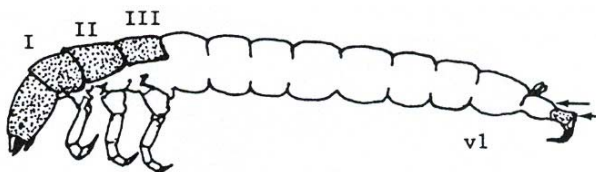
Hydropsyche pellucidula



Ukázka schránek:

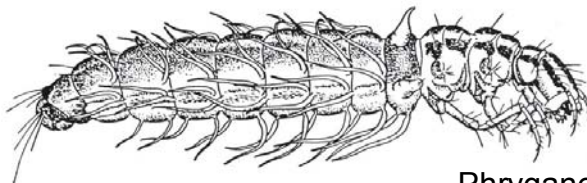


čeleď: *Ecnomidae*



čeleď: *Phryganeidae*

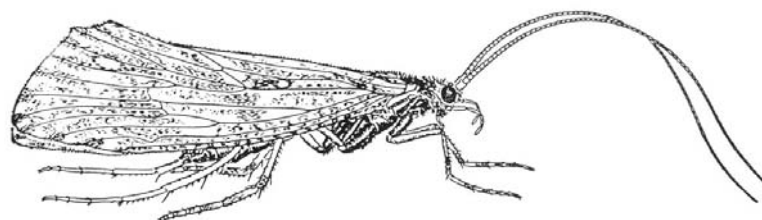
Oligotricha sp.



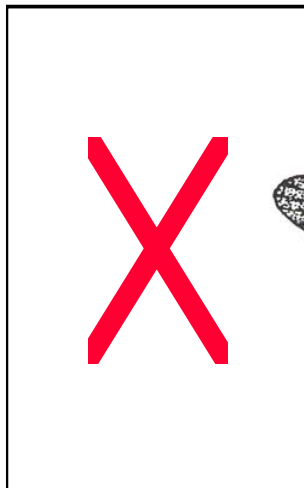
Phryganea sp.



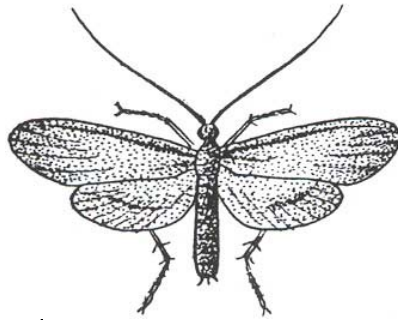
Phryganea sp. (imago)



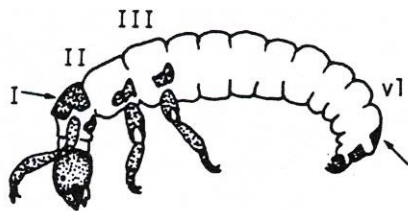
čeled': *Goeridae*



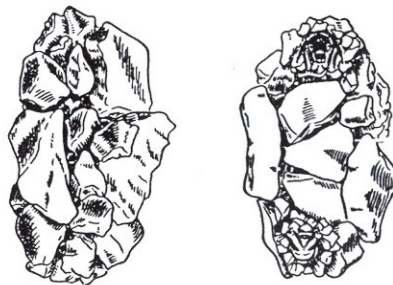
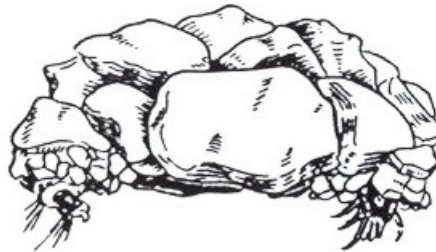
Silo pallipes (imago)



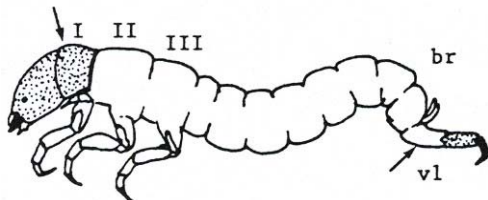
čeled': *Glossosomatidae*



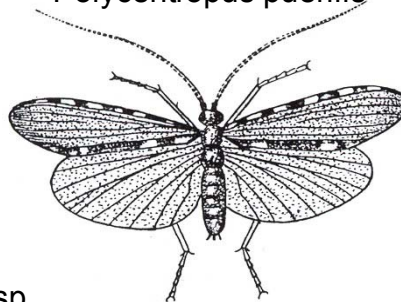
Agapetus sp.



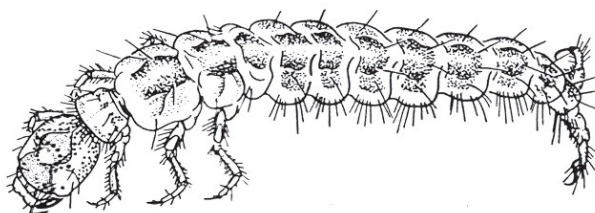
čeled': *Polycentropodidae*



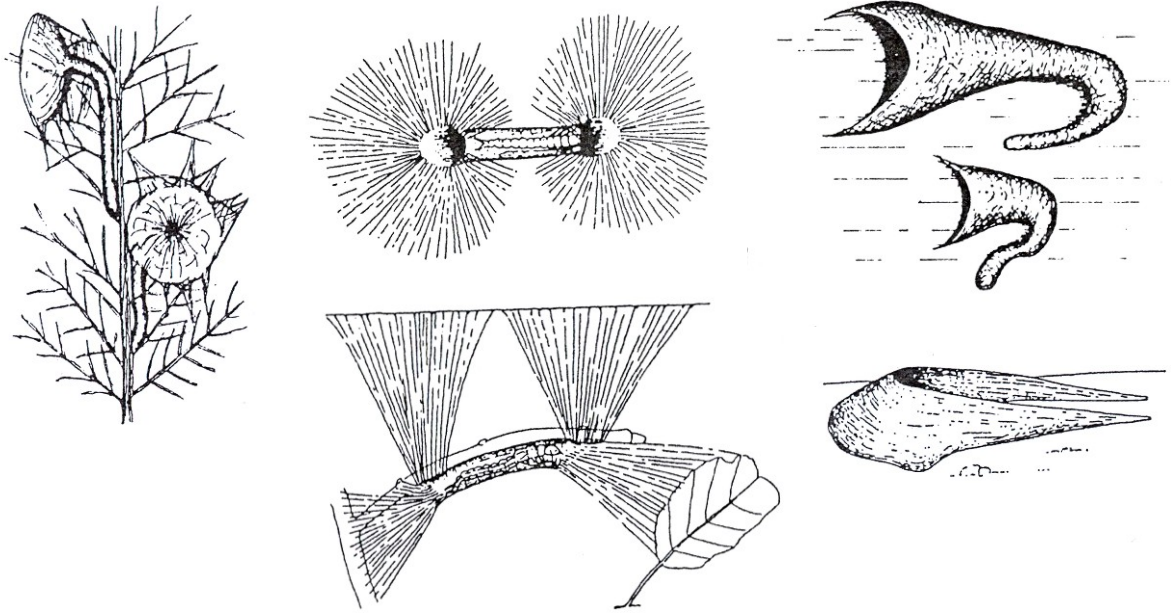
Polycentropus puerilis



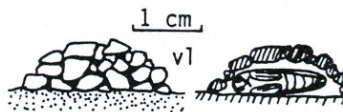
Plectrocnemia sp.



Ukázky schránek:

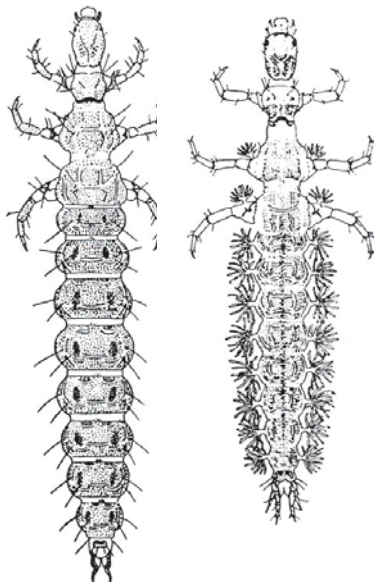
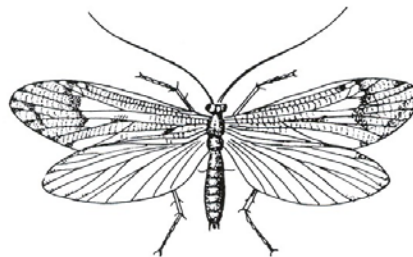


čeleď: *Rhyacophilidae*

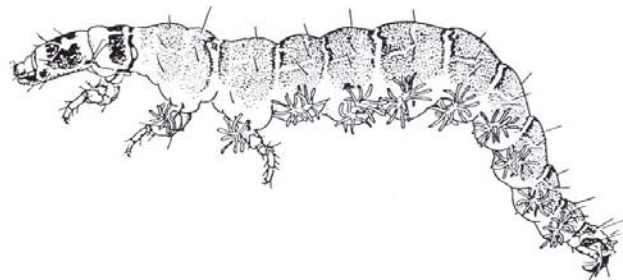


Rhyacophila

Rhyacophila sepestrionis (imago)

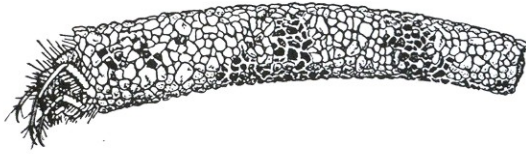


Rhyacophila sp.

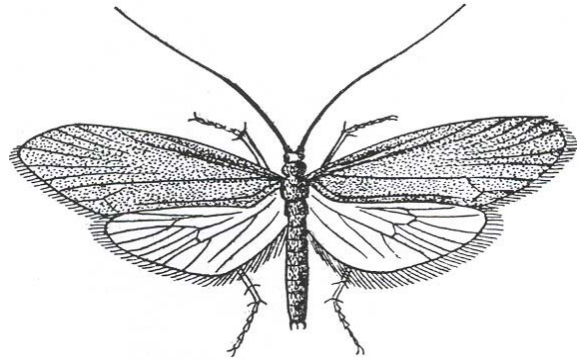


čeled': *Sericostomatidae*

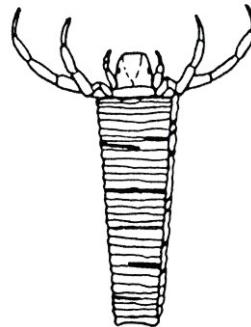
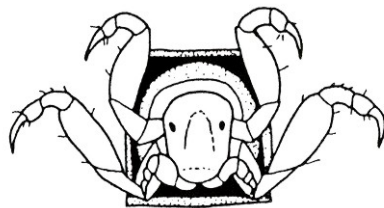
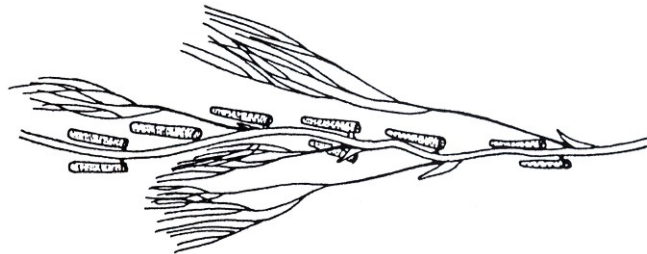
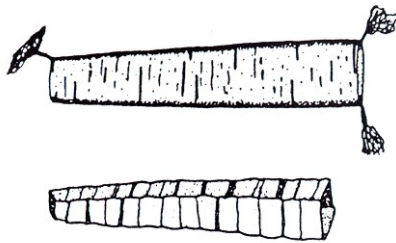
Sericostoma sp.



Sericostoma pedemontanum (imago)

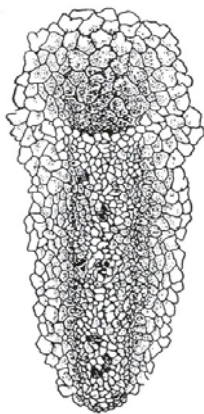


čeled': *Brachycentridae*

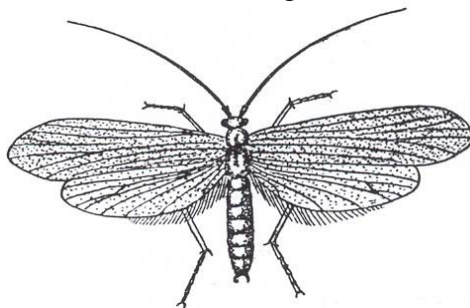


čeled': *Molannidae*

Molanna sp.

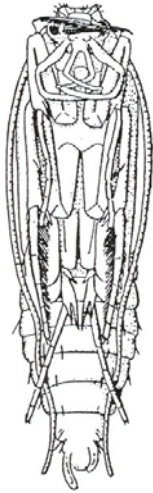


Molanna angustata



čeleď: Philopotamidae

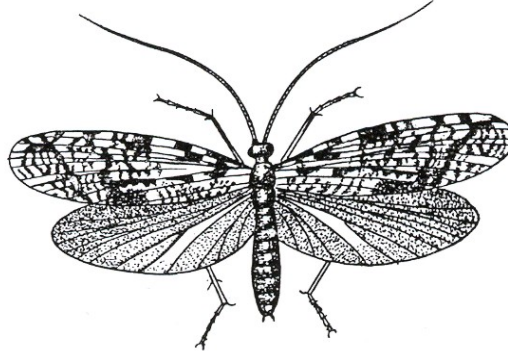
Philopotamus montanus (nymfa)



Philopotamus montanus



Philopotamus ludificatus



čeleď: Lepidostomatidae

Lepidostoma hirtum



1 mm



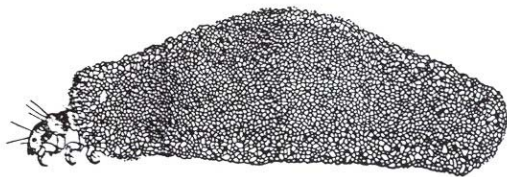
v1



CT

čeleď: Hydroptilidae

Hydroptila sp.



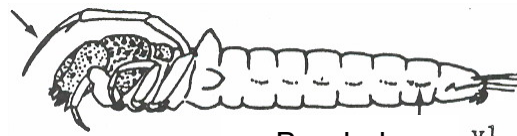
Ptilocolepus granulatus



čeleď: *Beraeidae*



g. *Beraea*



g. *Beralodes* v1

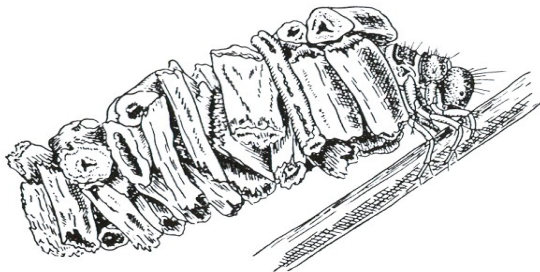


g. *Ernodes*

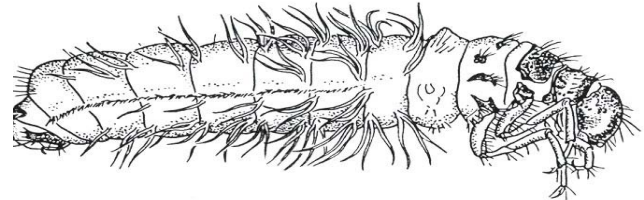


čeleď: *Limnephilidae*

Limnephilus flavicornis



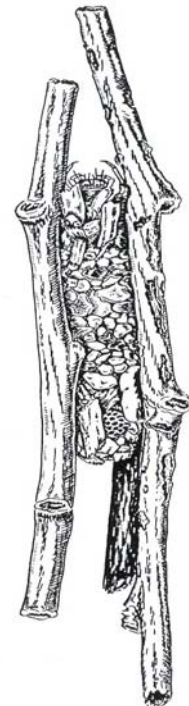
Limnephilus sp.



Stenophylax sp.



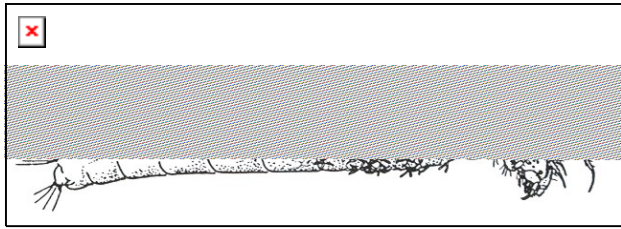
Anabolia sp.



Ukázka schránek:



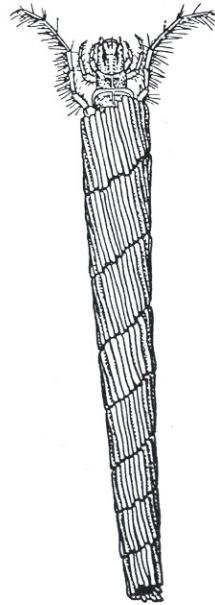
čeleď: *Leptoceridae*



Athripsodes sp.



Triaenodes sp.



čeleď: *Psychomyiidae*

