

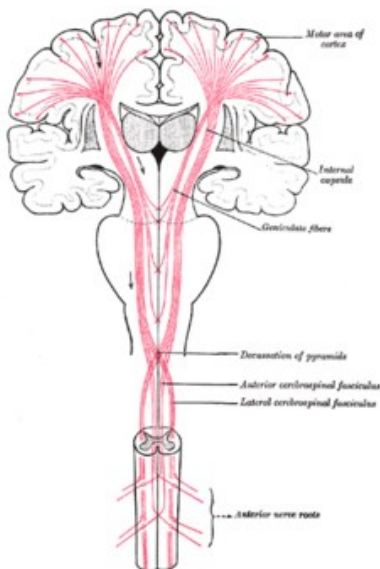
Physical Impairment

1. Read the article about cerebral palsy and fill in the missing words.

Abnormality	affect	affected	Awkward	brain	Decreased
diplegia	Hemiplegia	increased	legs	quadriplegia	slow
spasticity	tone	tongue	types	writing	10-20 %

Cerebral Palsy (CP)

Cerebral palsy is a group of disorders that (1) _____ a person's ability to move and maintain balance. It is due to a non-progressive brain (2) _____. People with cerebral palsy have damage to the part of the (3) _____ that controls muscle tone. It is what lets you keep your body in a certain posture or position. For example, it lets you sit straight and keep your head up. Changes in muscle tone let you move. The (4) _____ in different muscle groups must be balanced for you to move smoothly.



There are four main (5) _____ of cerebral palsy - spastic, dyskinetic, ataxic, and mixed.

- **Spastic:** People with spastic cerebral palsy have (6) _____ muscle tone. Their muscles are stiff. Their movements can be (7) _____. About 70-80 percent of people with cerebral palsy have spasticity. Spastic cerebral palsy is usually described further by what parts of the body are (8) _____. In spastic (9) _____, the main effect is found in both legs. In spastic (10) _____, one side of the person's body is affected. Spastic (11) _____ affects a person's whole body (face, trunk, legs, and arms).

- **Dyskinetic (also called athetoid):** People with dyskinetic cerebral palsy have (12) _____ movements that they cannot control. The movements usually affect a person's hands, arms, feet, and (13) _____. Sometimes the face and (14) _____ are affected, and the person has a hard time talking. Muscle tone can change from day to day and can vary even during a single day. About (15) _____ of people with cerebral palsy have the dyskinetic form.

- **Ataxic:** People with ataxic cerebral palsy have problems mainly with balance. They might be unsteady when they walk. They might have a hard time with quick movements or movements that need a lot of control, like (16) _____. They might have difficulty controlling their hands or arms when they reach for something. People with ataxic cerebral palsy can have increased or (17) _____ muscle tone. Only about 5 -10 percent of people with cerebral palsy have ataxia.
- **Mixed:** Some people have more than one type of cerebral palsy. The most common pattern is (18) _____ plus dyskinetic movements.