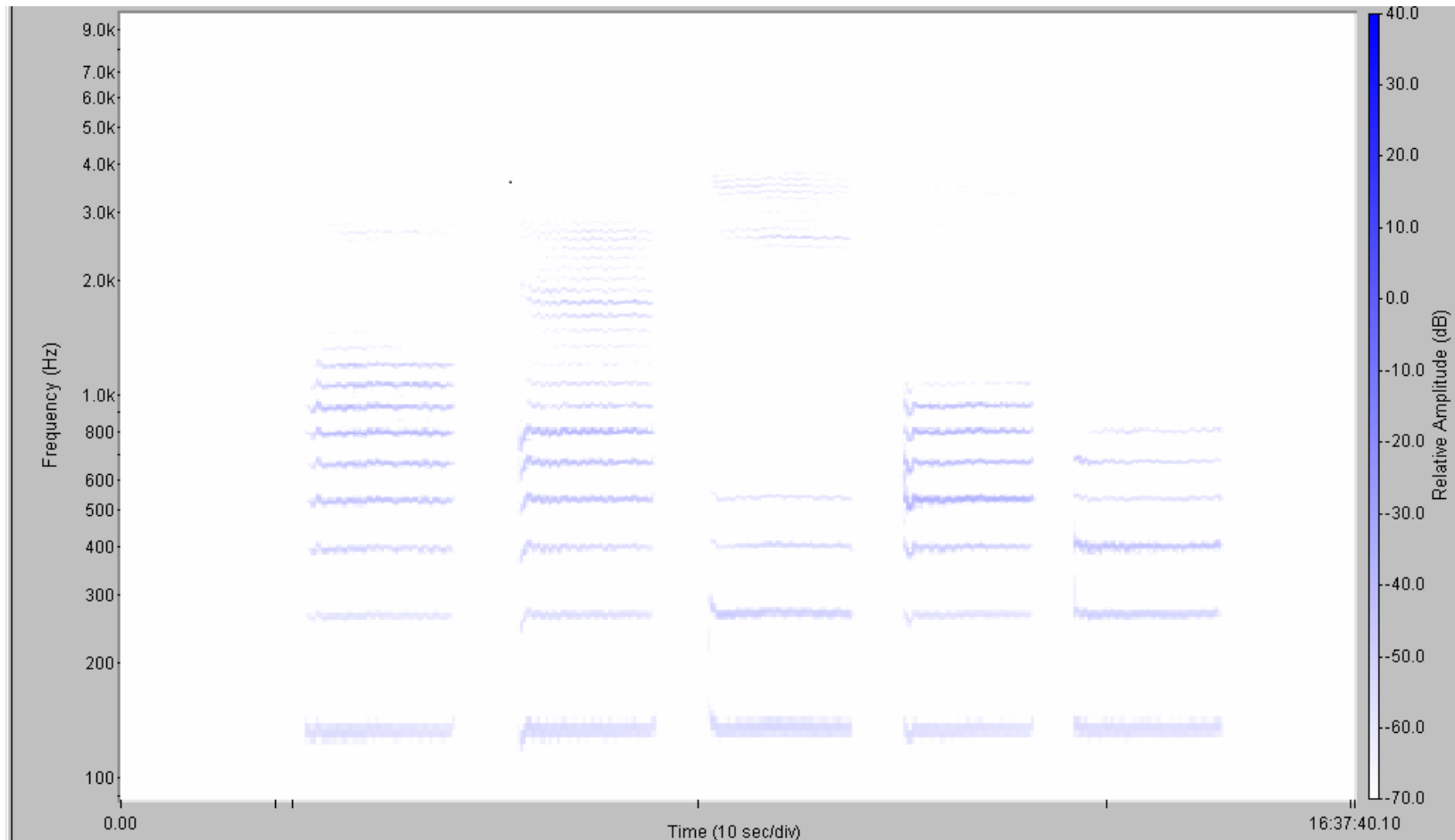


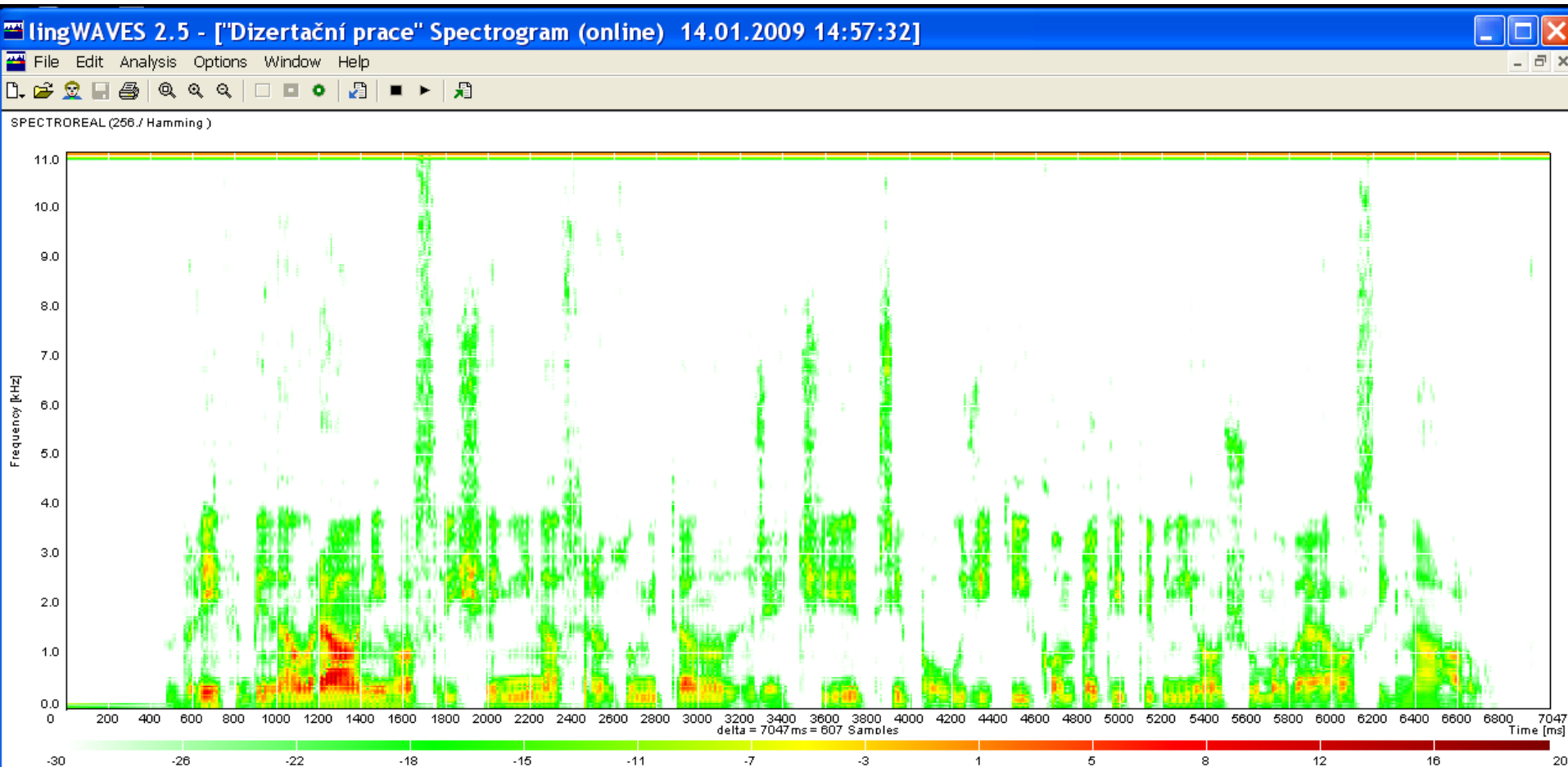
Sluch v řečové komunikaci

Sonagram vokálů



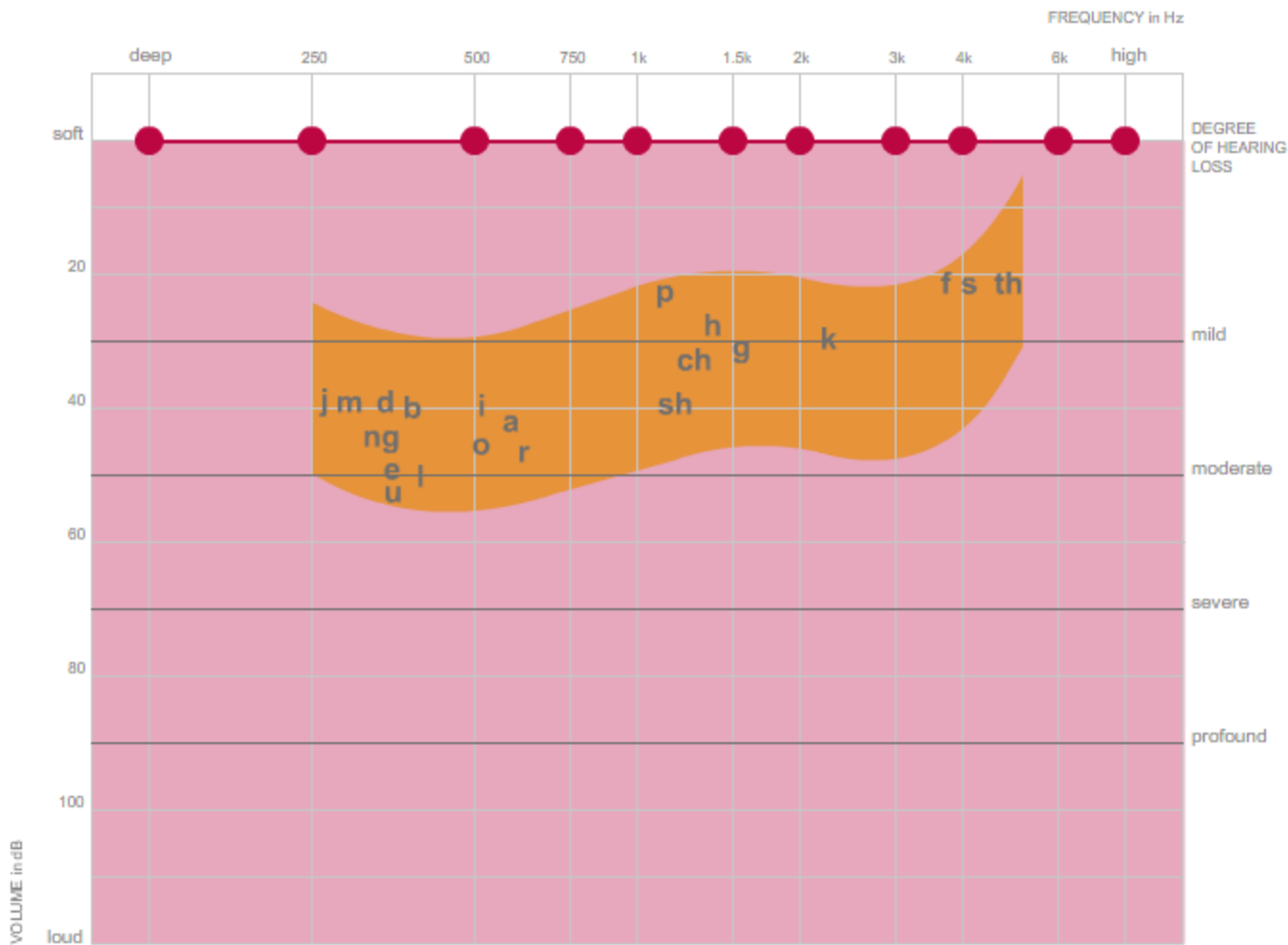
Spektrogram řeči

VLIV BINAURÁLNÍHO SLYŠENÍ NA SROZUMITELNOST ŘEČI PŘI POUŽITÍ KOMPETITIVNÍHO ŠUMOVÉHO SIGNÁLU



VLIV BINAURÁLNÍHO SLYŠENÍ NA SROZUMITELNOST ŘEČI PŘI POUŽITÍ KOMPETITIVNÍHO ŠUMOVÉHO SIGNÁLU

Hearing loss simulator



- Environmental sounds
- Speech area
- Right ear

Patient

Personal Audio

Typical audiogram

Normal

Sound examples

Please select

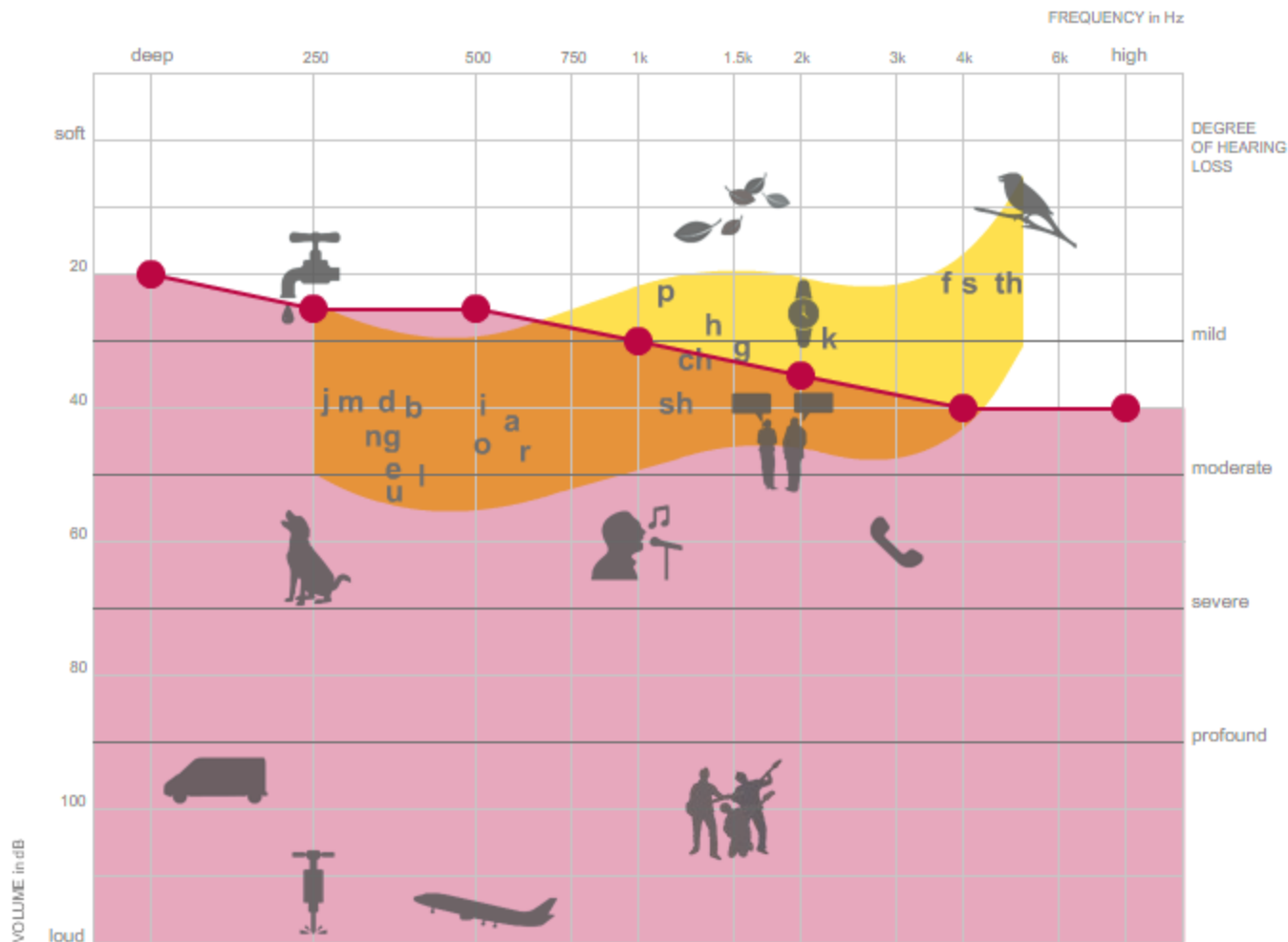
▶

◀

Print

Hearing loss simulator

- Environmental sounds
- Speech area
- Right ear



Patient

Personal Audio

Typical audiogram

Mild

Sound examples

Please select

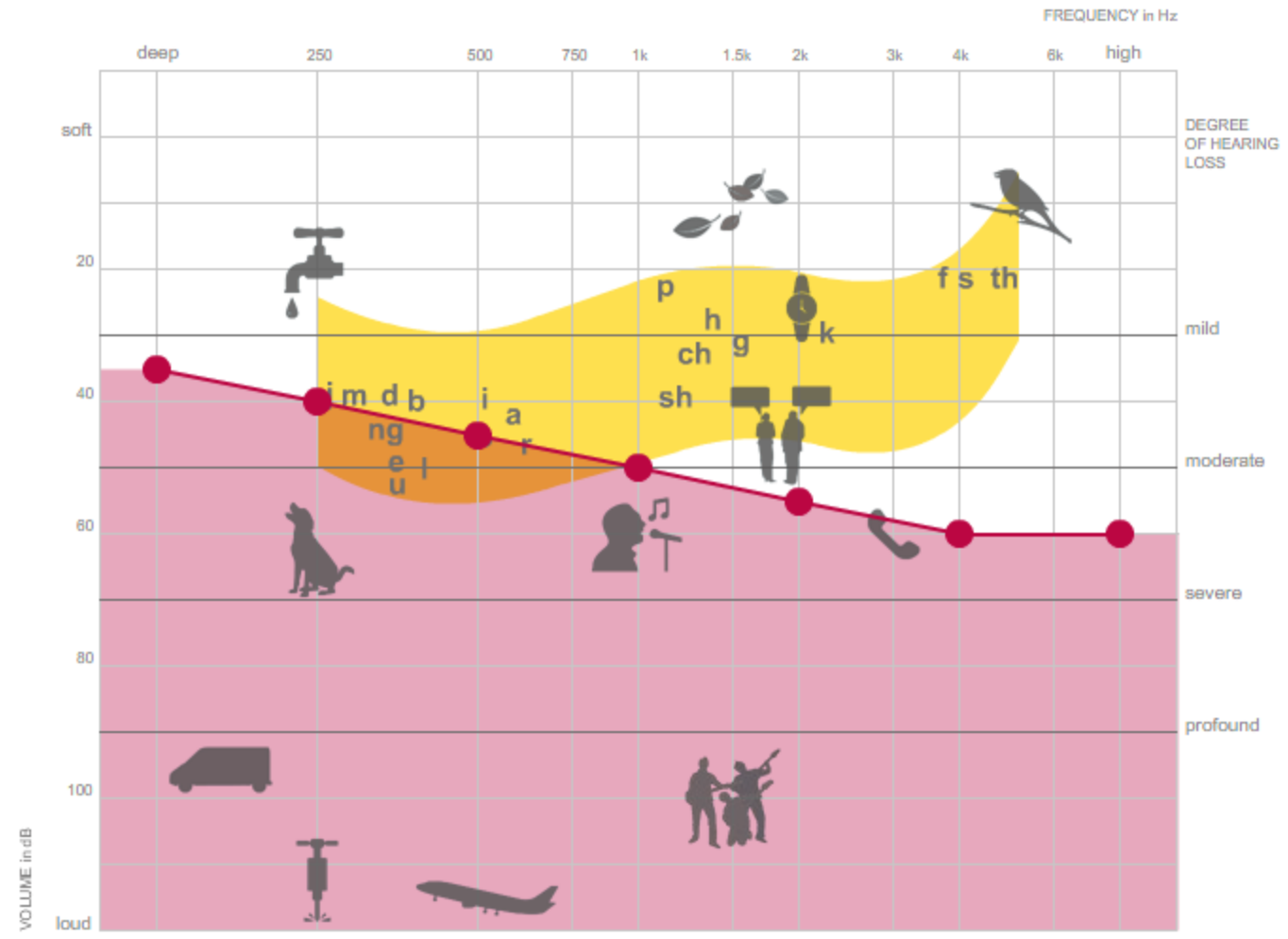
▶

◀

Print

Hearing loss simulator

- Environmental sounds
- Speech area
- Right ear



Patient

Personal Audio

Typical audiogram

Moderate

Sound examples

Please select

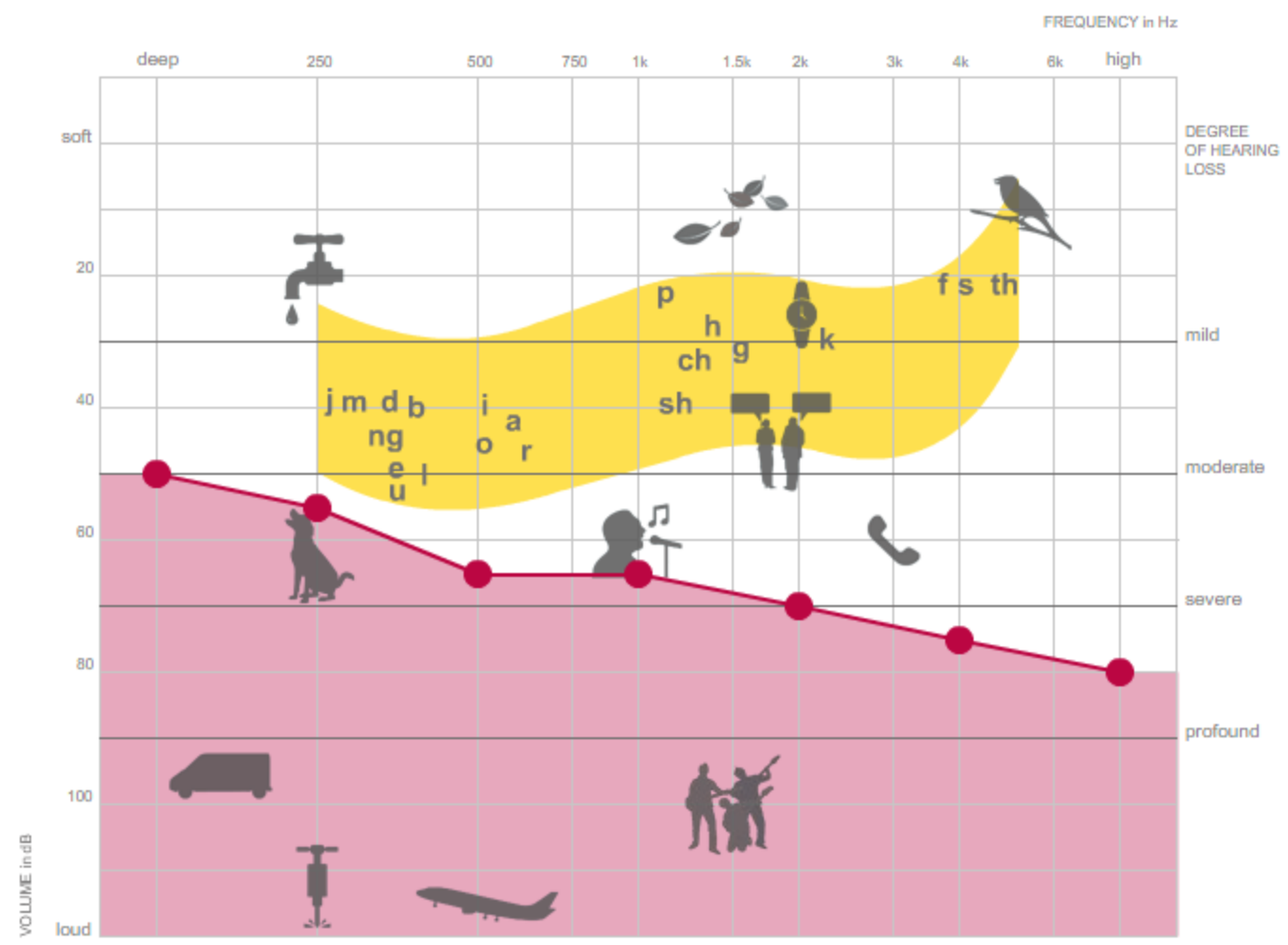
▶

◀

Print

Hearing loss simulator

- Environmental sounds
- Speech area
- Right ear



Patient

Personal Audio

Typical audiogram

Severe

Sound examples

Please select

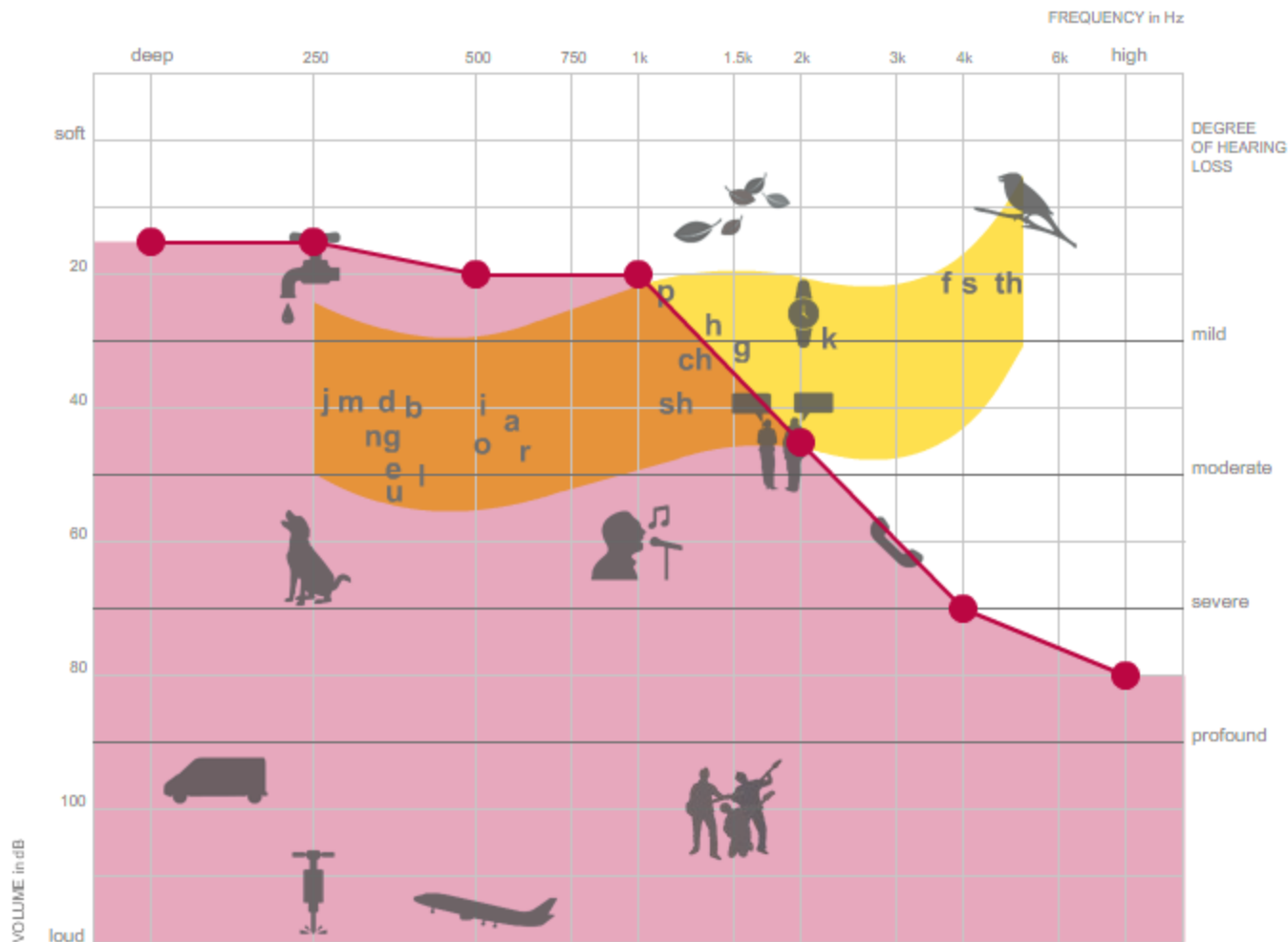
Play button

Volume slider

Print

Hearing loss simulator

- Environmental sounds
- Speech area
- Right ear



Patient

Personal Audio

Typical audiogram

Ski-slope

Sound examples

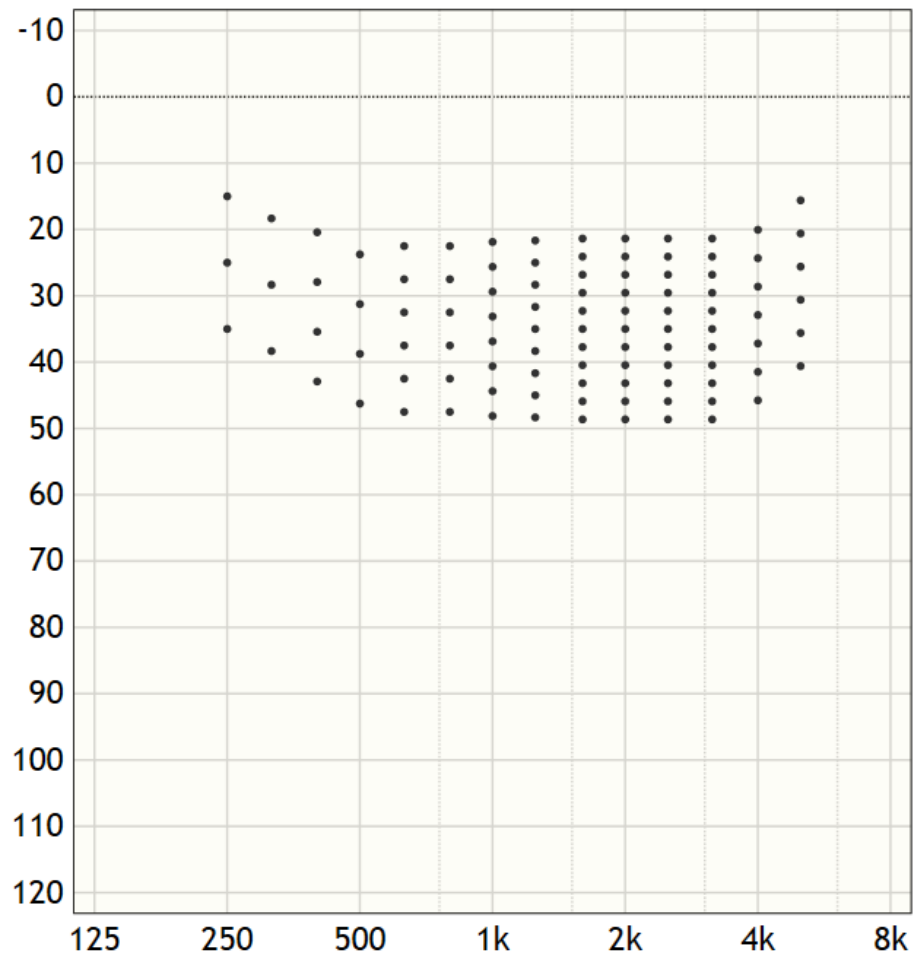
Please select

Play button

Volume slider

Print

Artikulační index



Artikulační index

