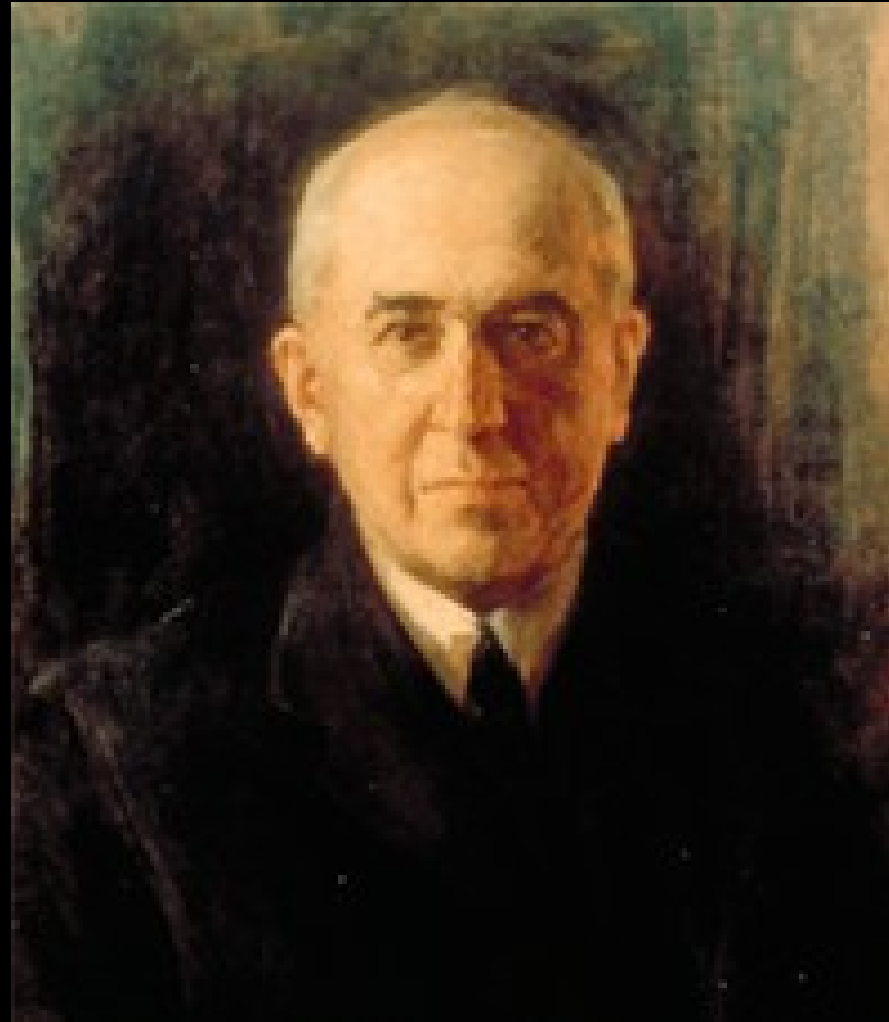
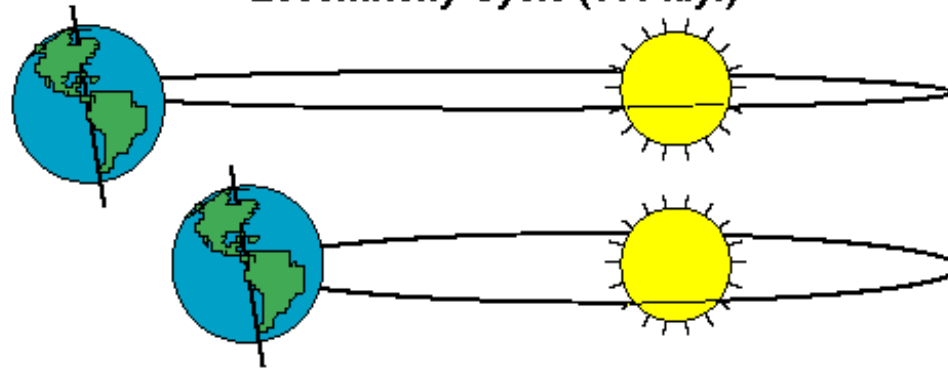


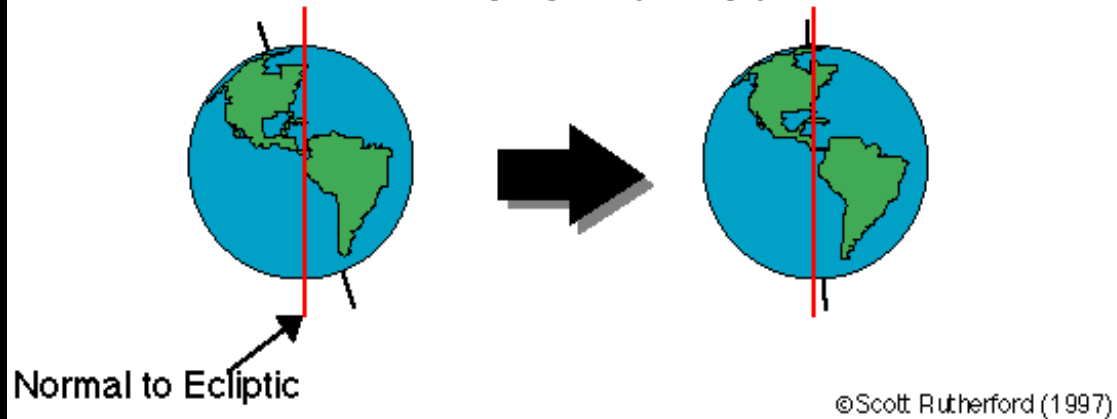
Milankovitchovi cykly a změny zemského klimatu



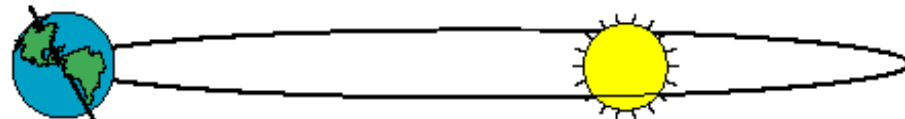
Eccentricity Cycle (100 k.y.)



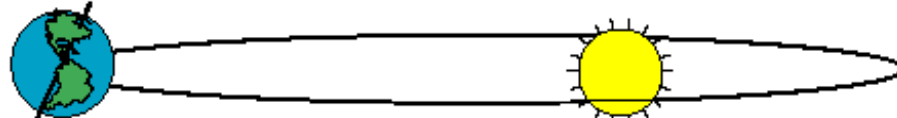
Obliquity Cycle (41 k.y.)



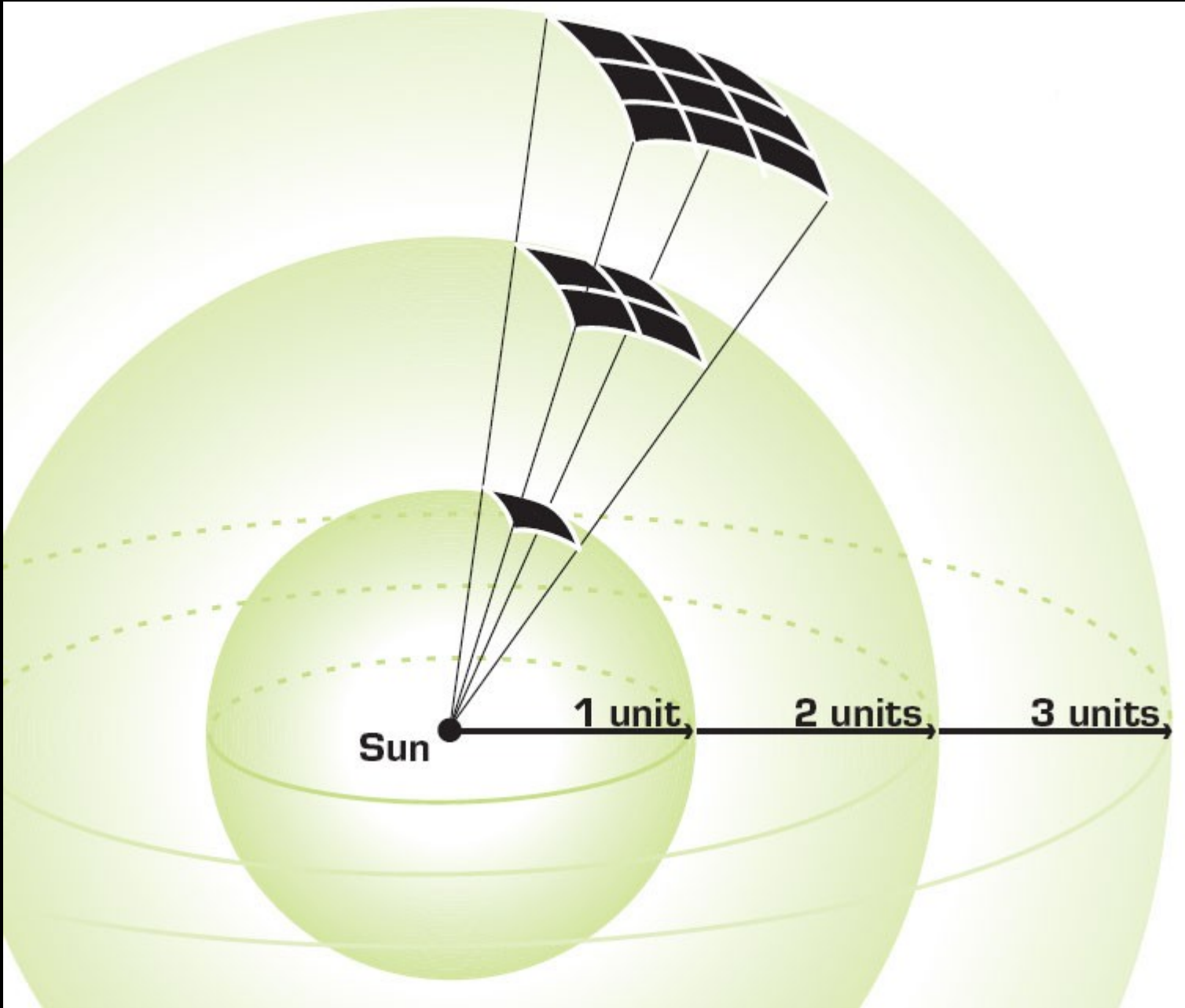
Precession of the Equinoxes (19 and 23 k.y.)

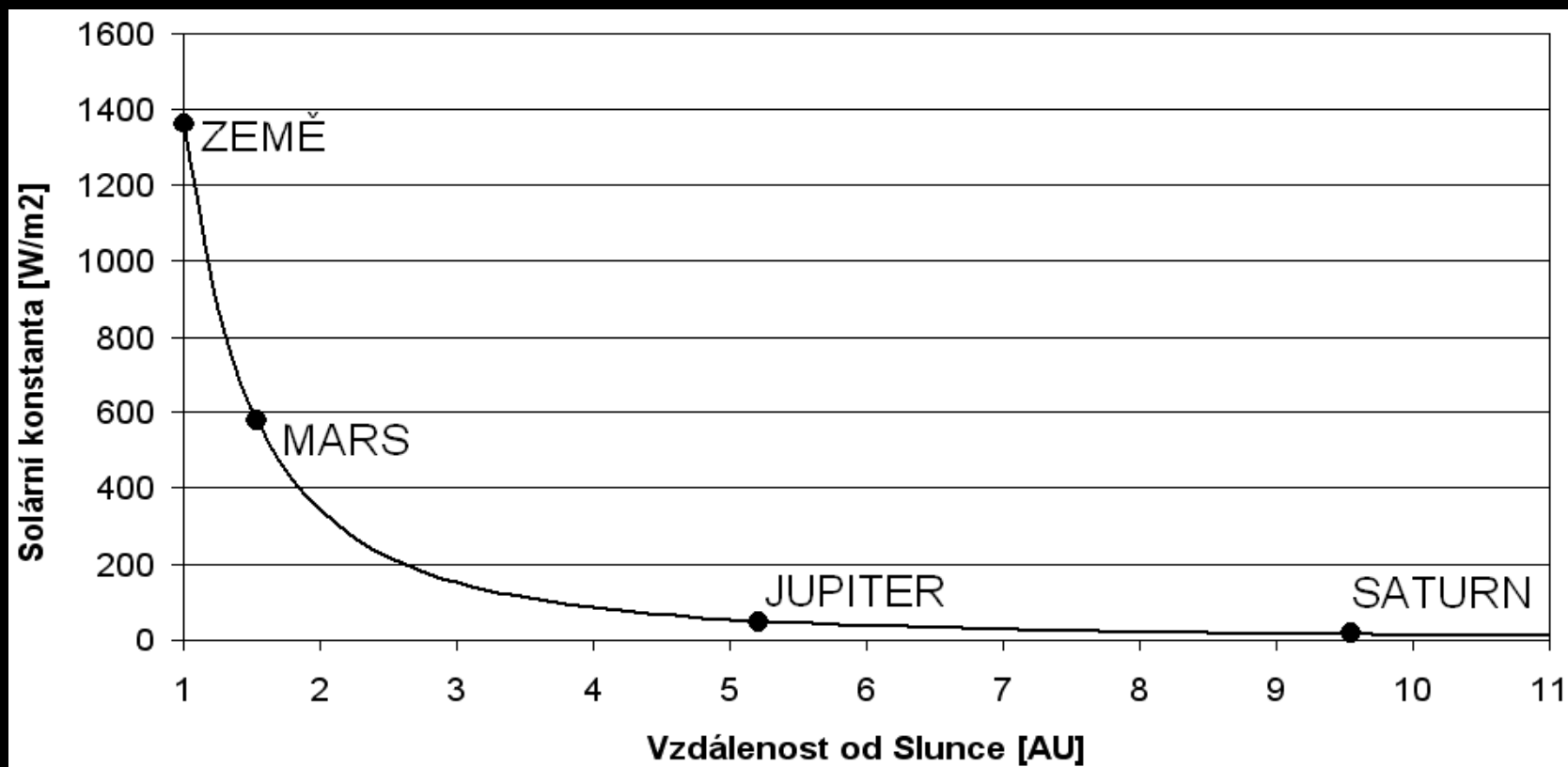
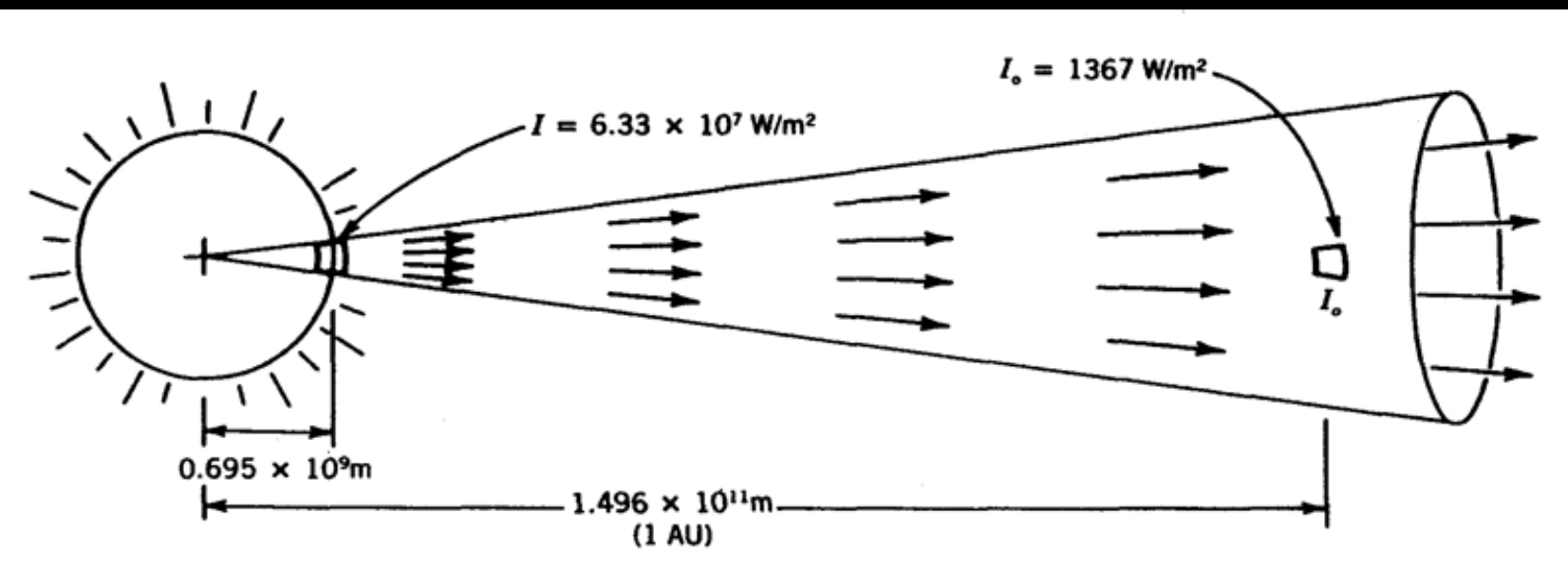


Northern Hemisphere tilted away from the sun at aphelion.



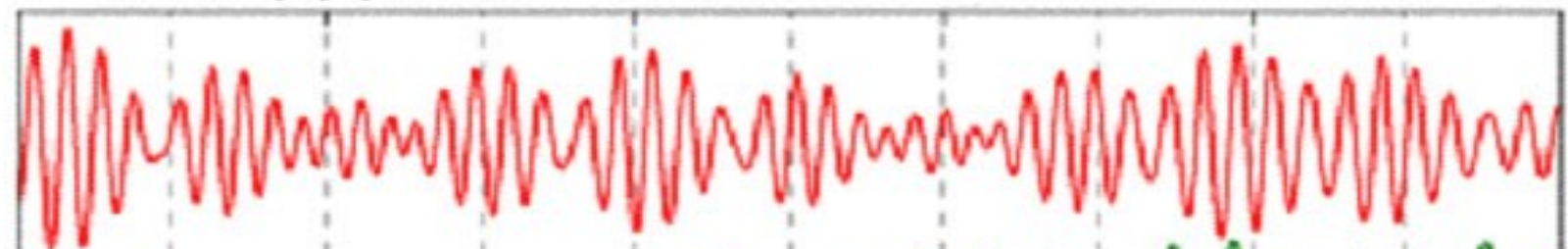
Northern hemisphere tilted toward the sun at aphelion.



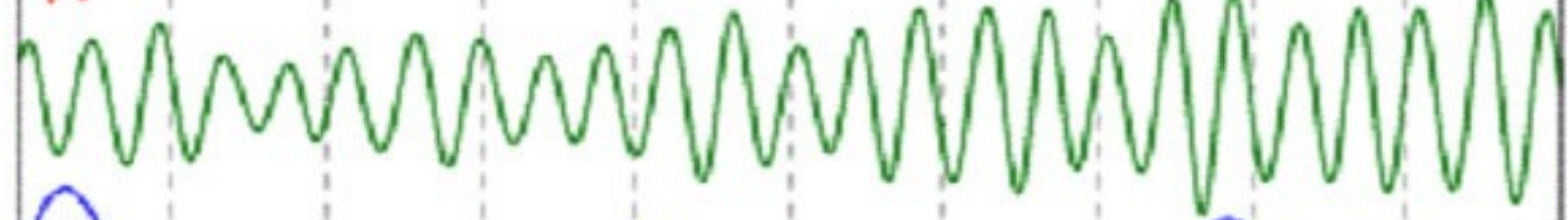


tisíce let ← 1000 800 600 400 200 0

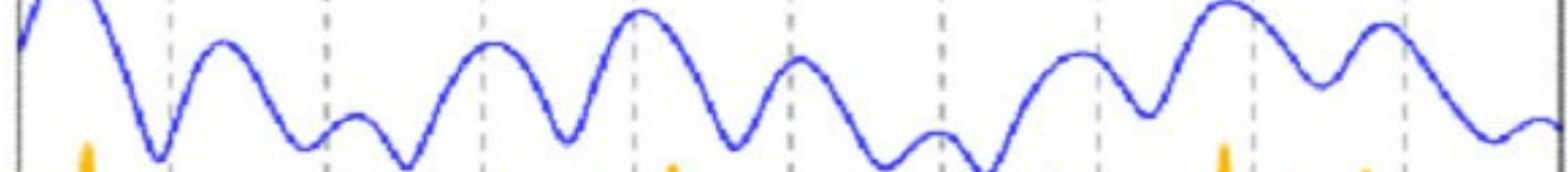
precese



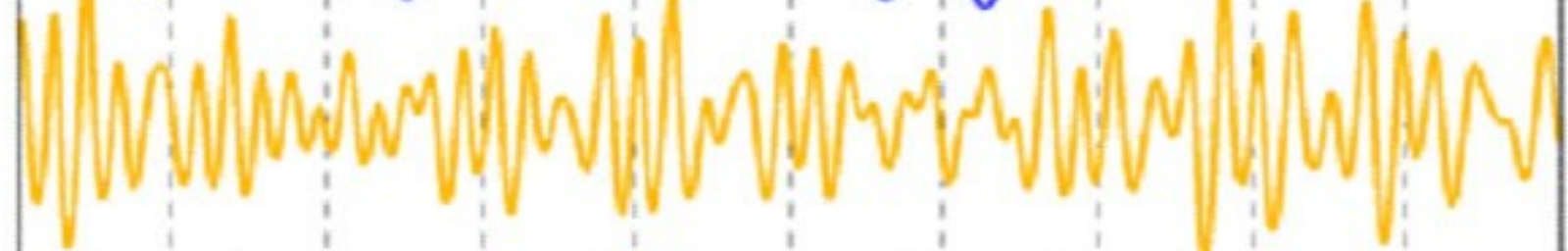
sklon zemské osy



excentricita



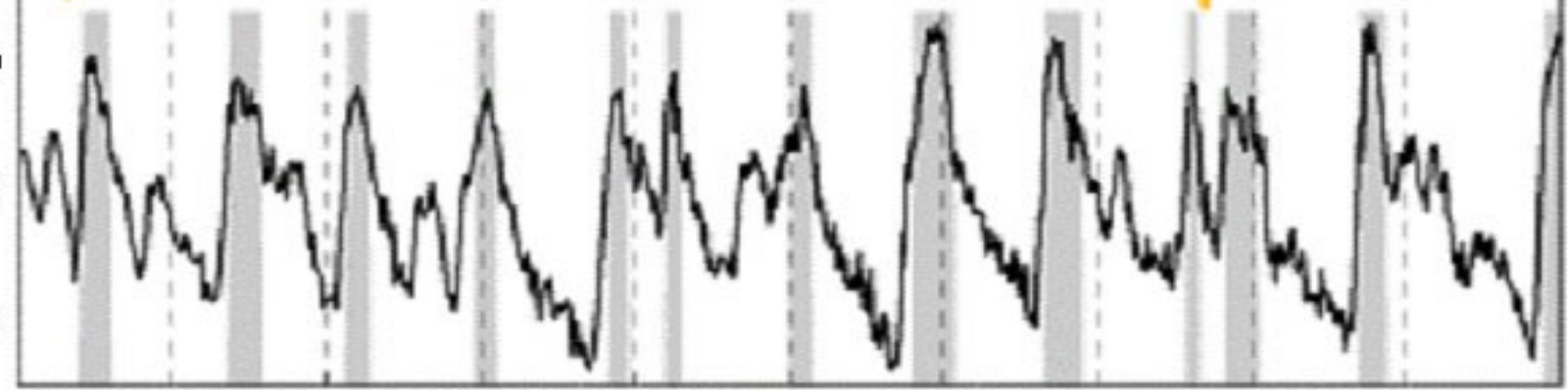
sluneční záření
(65° severní šířky)

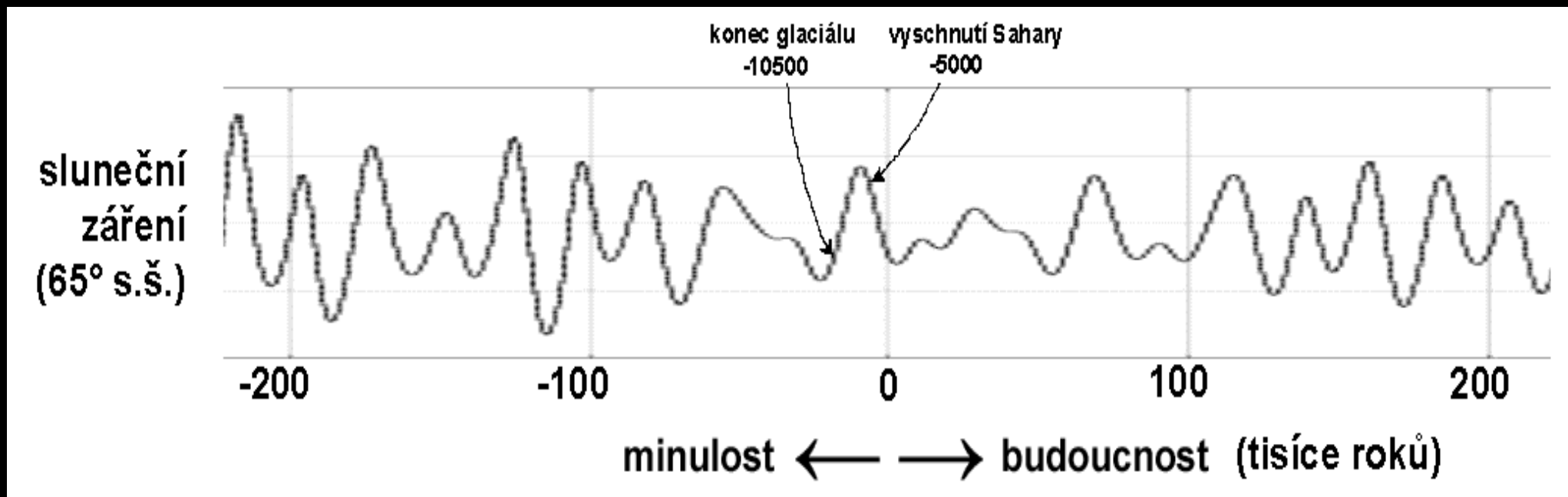
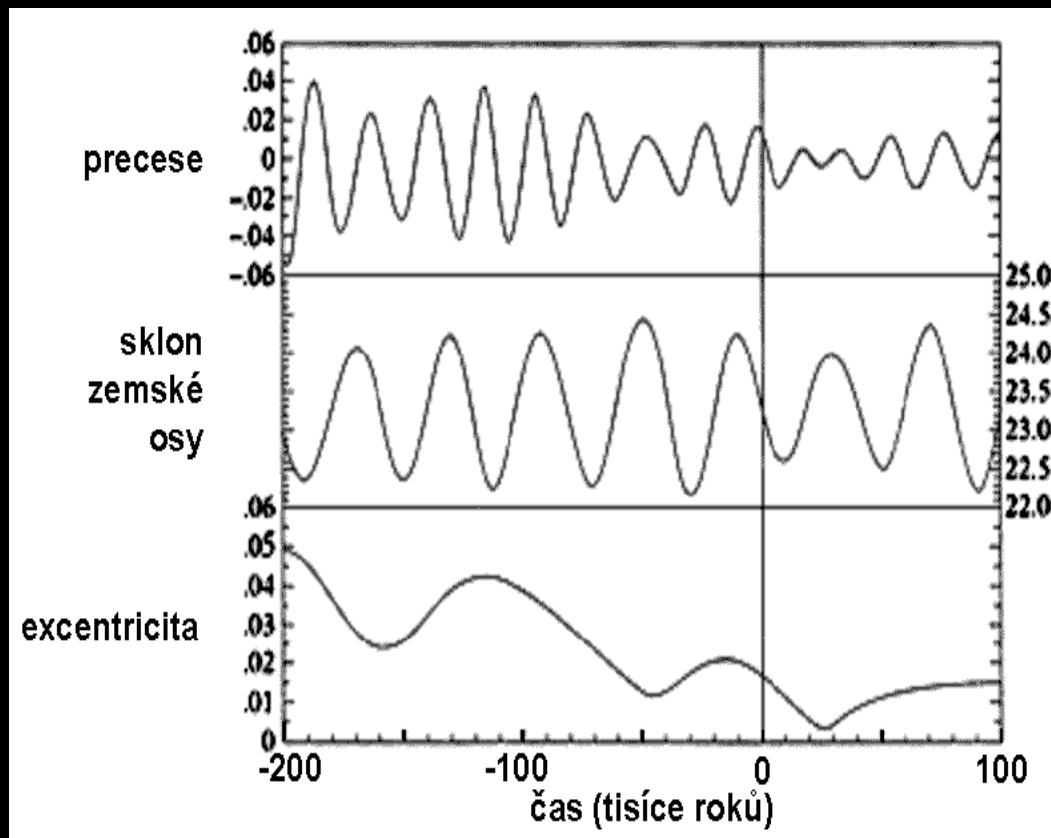


horko

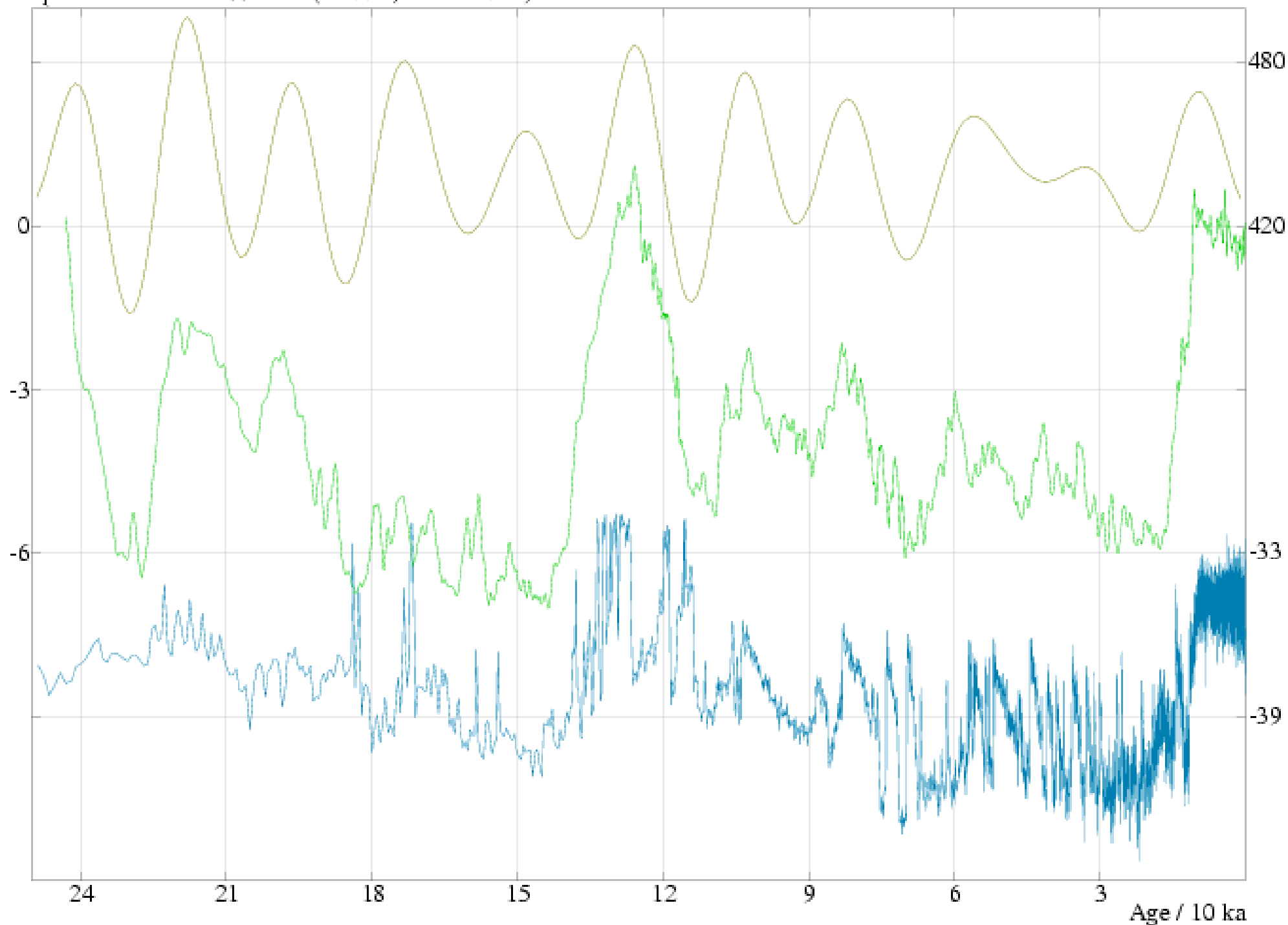
teplota Země

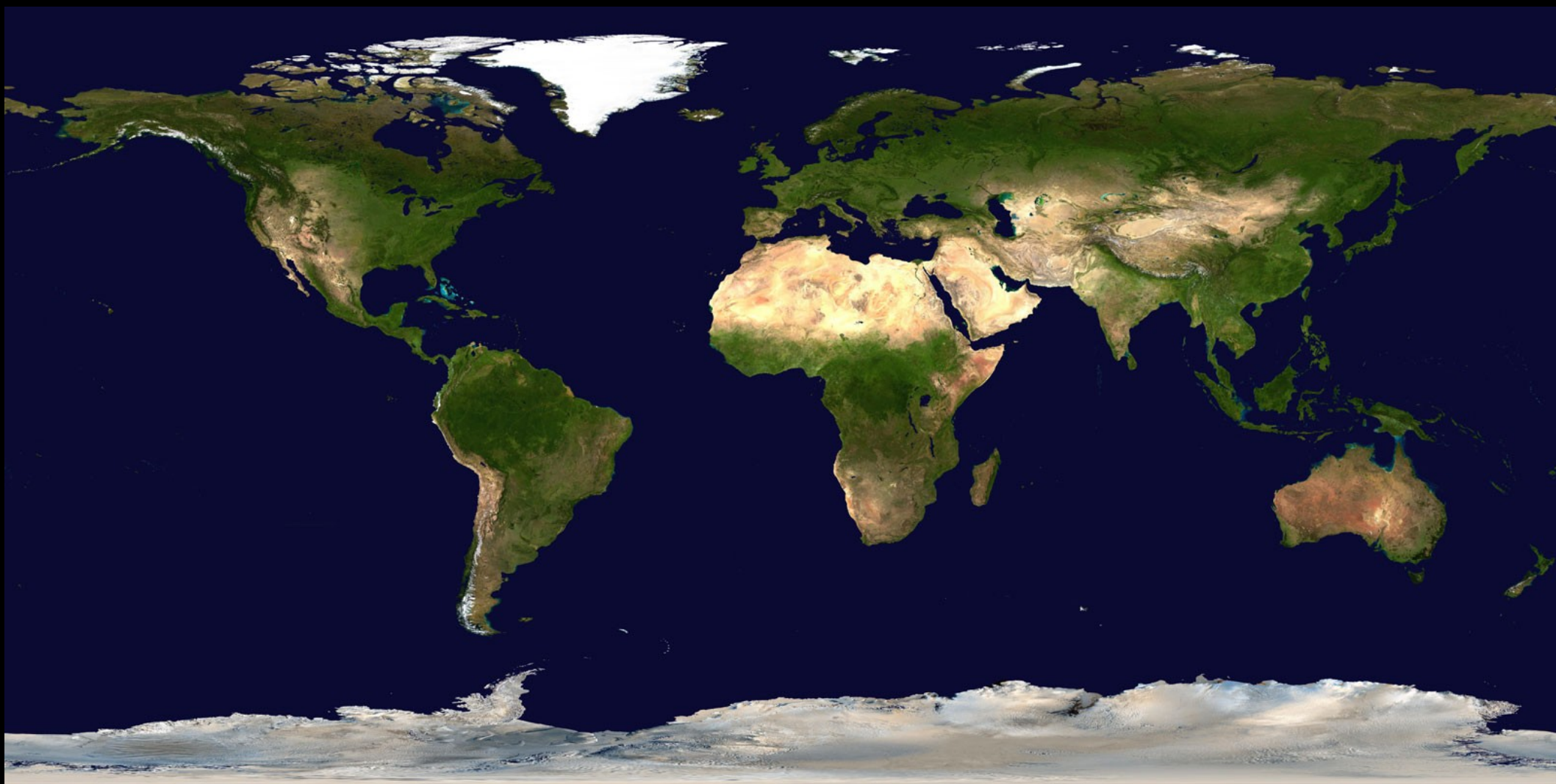
chladno



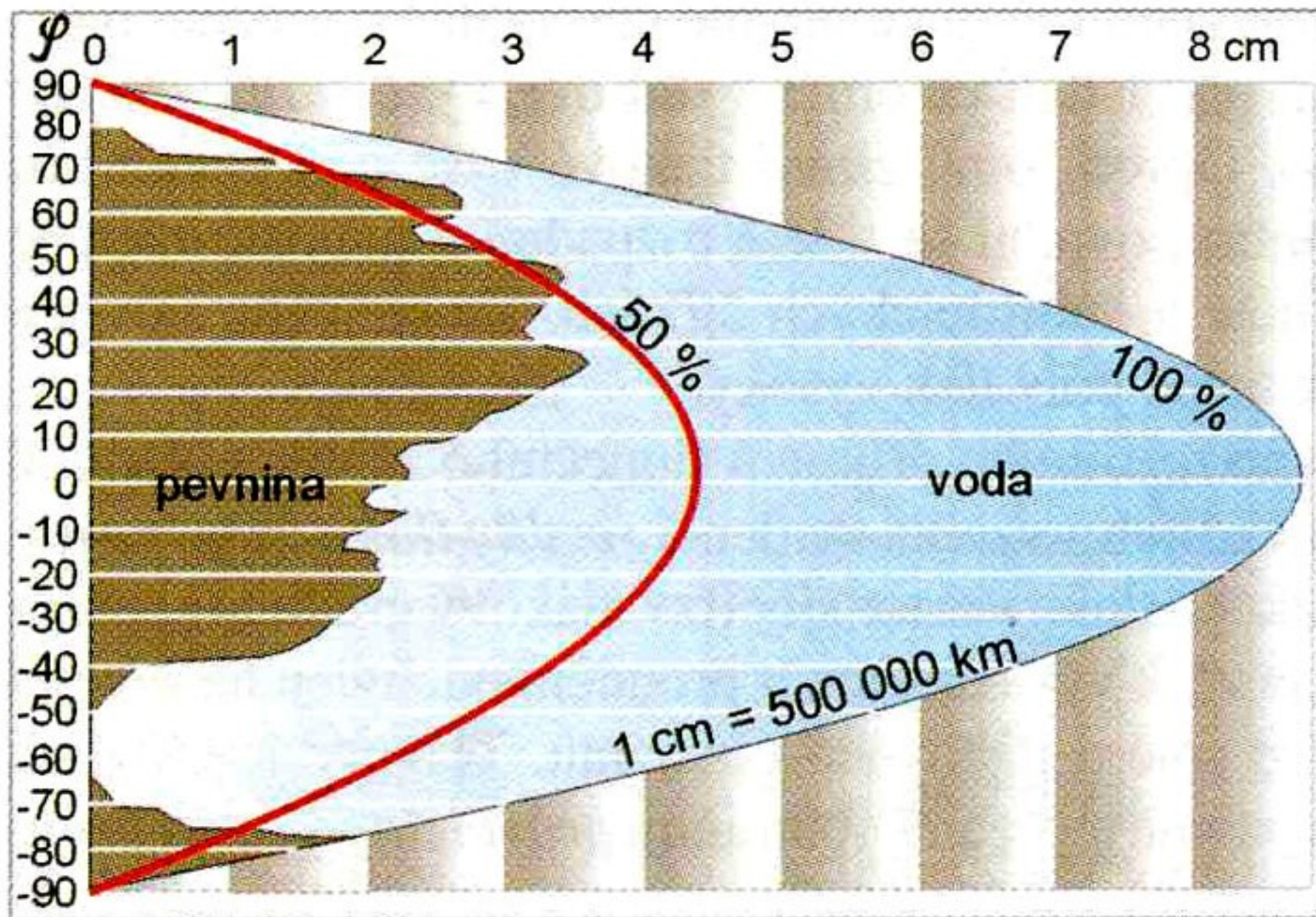


TOP: mid-July mean insolation of 65N latitude / W.m-2, BOTTOM: GRIP O18 data temperature - that in 1990 / K (middle, Vostok data)





Zastoupení vodstva a pevnin v různých zeměpisných šířkách





William
Ruddiman

