

## Introduction to Special Needs Terminology

### 1. What senses does a healthy person use?

\_\_\_\_\_

\_\_\_\_\_

\_\_\_\_\_

### 2. Find Czech equivalents to the following expressions:

special needs education	
students with special educational needs	
special teacher/educator	
special schools	
hearing impairment/disability	
visual impairment/disability	
intellectual/mental impairment/disability	
physical impairment/disability/(handicap)	
speech (-language) impairment/disability	
multiple handicap	
specific learning difficulties/disabilities	
behavioural and emotional difficulties	
sensory disabilities (involving sight/hearing)	
mild	
moderate	
profound/severe	

### **A person with ...**

a hearing impairment

a visual impairment

a intellectual impairment

a physical impairment

a speech impairment

**is called**

\_\_\_\_\_

\_\_\_\_\_

\_\_\_\_\_

\_\_\_\_\_

**3. Put each of the illnesses under the appropriate category:**

hearing impairment

\_\_\_\_\_

\_\_\_\_\_

visual impairment

\_\_\_\_\_

\_\_\_\_\_

intellectual/mental impairment

\_\_\_\_\_

\_\_\_\_\_

physical impairment

\_\_\_\_\_

\_\_\_\_\_

speech impairment

\_\_\_\_\_

\_\_\_\_\_

multiple handicap

\_\_\_\_\_

\_\_\_\_\_

Down syndrom

stammering / stuttaring

glaucoma

multiple sclerosis

deafblindness

damage of hearing cells

dysarthria

cerebral palsy

damage of the auditory nerve

near-sightedness/ far-sightedness

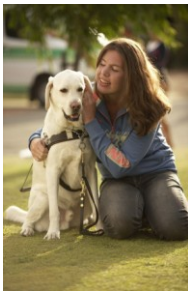
**4. Have a look at the pictures. What aids help the people to overcome their handicap?**

white cane  
the Braille (system)

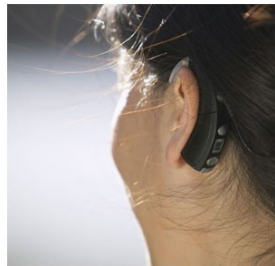
crutches  
tactile maps

wheel chair  
wheel chair lift

sign language  
cochlear implant



A



B



C



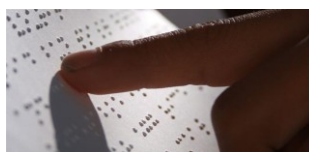
D



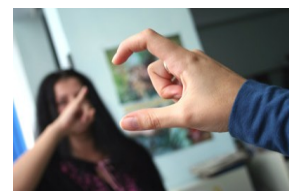
E



F



G



H

### **Class discussion:**

- 1) Do you have any personal experience of meeting and helping a person with some kind of impairment?
- 2) What do you think are the most difficult things to do/ situations to deal with when you are  
a) a visually impaired person b) a hearing impaired person c) a physically impaired person?
- 3) What is your opinion on the relationship of the impaired people and the mainstream intact population in the Czech Republic?

Do you agree that the position of people with different handicaps in the Czech Republic is equal in the area of working opportunities, education, free-time activities and the overall quality of their life?