

1. Global map of natural hazards.

Earthquakes

- Zone 0: MM V and lower
- Zone 1: MM VI
- Zone 2: MM VII
- Zone 3: MM VIII
- Zone 4: MM IX and higher

Maximum intensity of earthquakes (MM: Modified Mercalli scale) with an excess probability of 10% within 50 years (corresponds to a repetition period of 475 years at average substrate conditions).

Tropical cyclones

- Zone 0: SS 1 (118-153 km/h)
- Zone 1: SS 2 (154-177 km/h)
- Zone 2: SS 3 (178-209 km/h)
- Zone 3: SS 4 (210-249 km/h)
- Zone 4: SS 5 (> 250 km/h)

Trajectories of tropical cyclones

Maximum intensity of tropical cyclones (SS: Saffir Simpson hurricane scale) with a mean excess probability of 10% within 10 years (corresponds to a repetition period of 100 years).

Non-tropical storms

Trajectories of non-tropical storms

Volcanoes

- ▲ Last eruption after 1800 A.D.
- ▲ Extraordinarily dangerous volcanoes

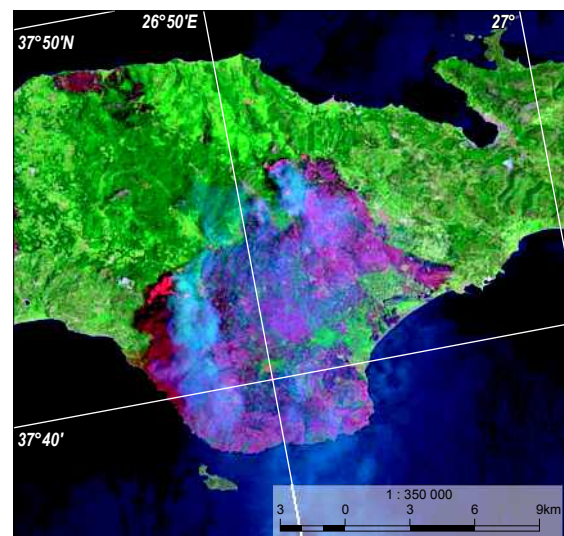
Streams

Main rivers

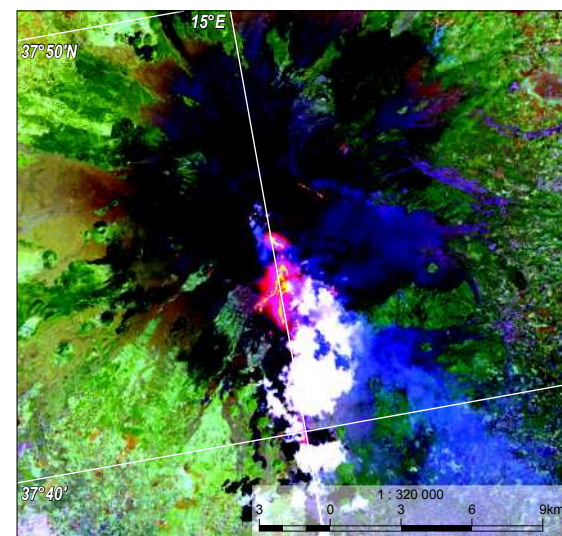
Cities and conurbations (2000)

- 1 - 3 mio. inhabitants
- 3 - 7 mio. inhabitants
- 7 - 10 mio. inhabitants
- 10 - 15 mio. inhabitants
- > 15 mio. inhabitants

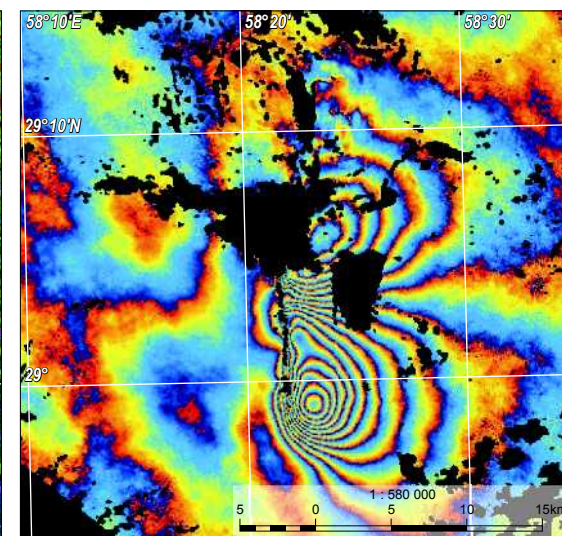
Source: Münchener Rückversicherungs-Gesellschaft 1998 / Geospace 2005



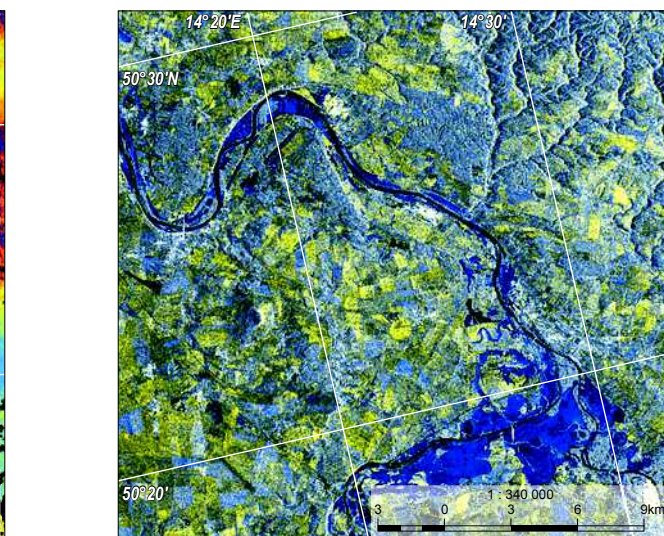
2. Forest fires. Samos, Greece, 09 July 2000.



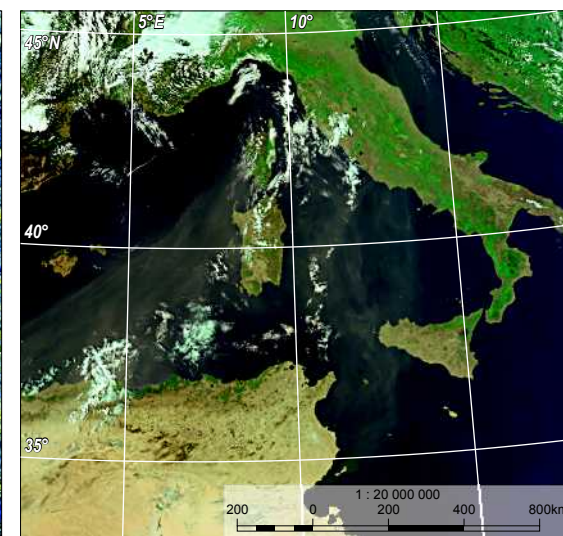
3. Volcanic eruptions. Etna, Italy, 29 July 2001.



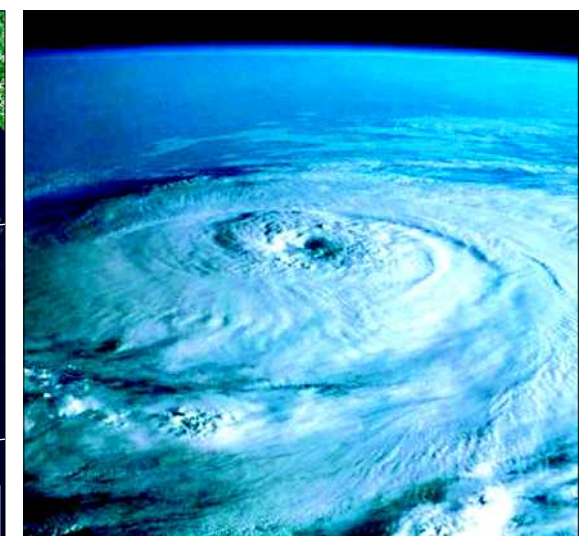
4. Earthquakes. Bam, Iran, 30 December 2003.



5. Floods. Elbe and Vltava, Czech Republic, 16 August 2002.



6. Sandstorms. Scirocco, N. Africa - Italy, 29 August 2003.



7. Hurricanes. Hurricane Elena, 03 September 1985.