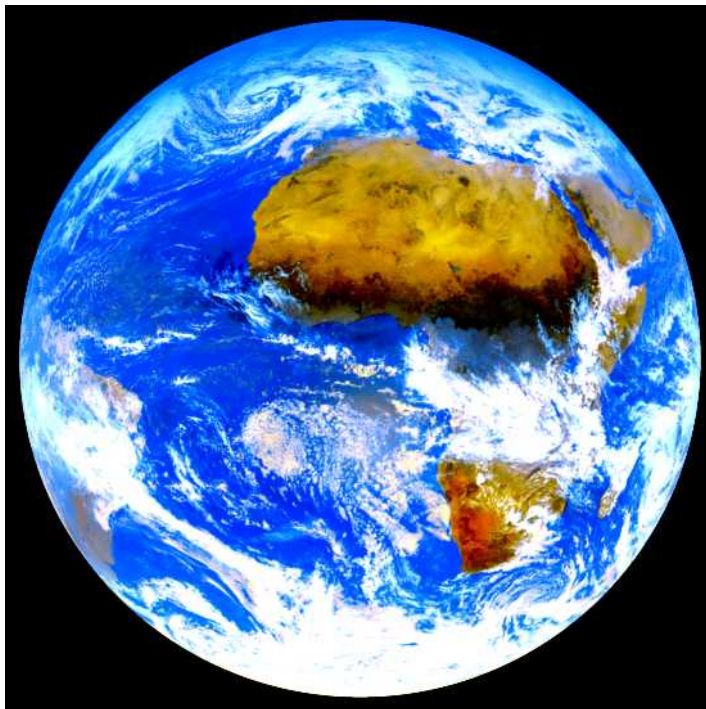


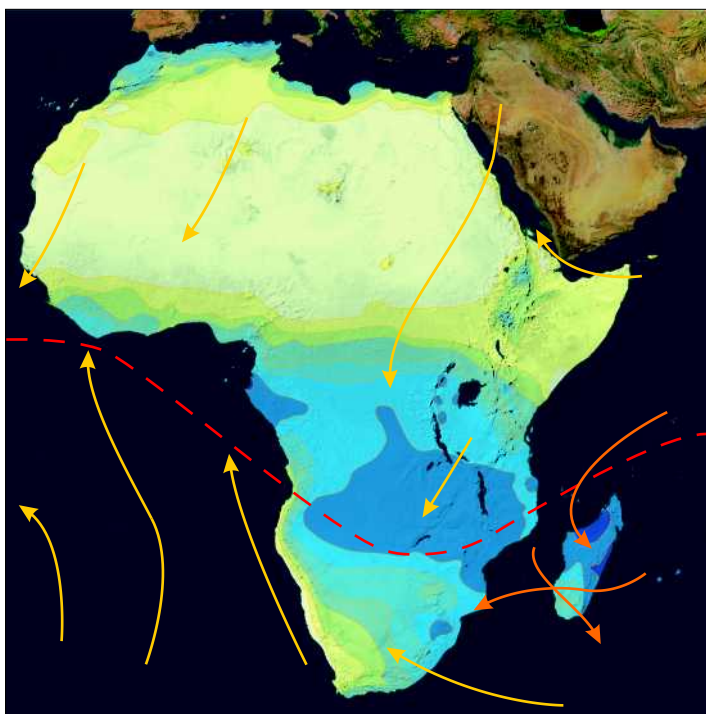
1a. Africa
Meteosat image
12 December 2002,
12:00 UTC.



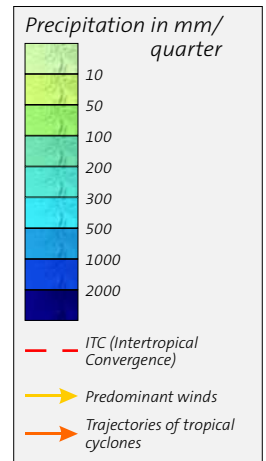
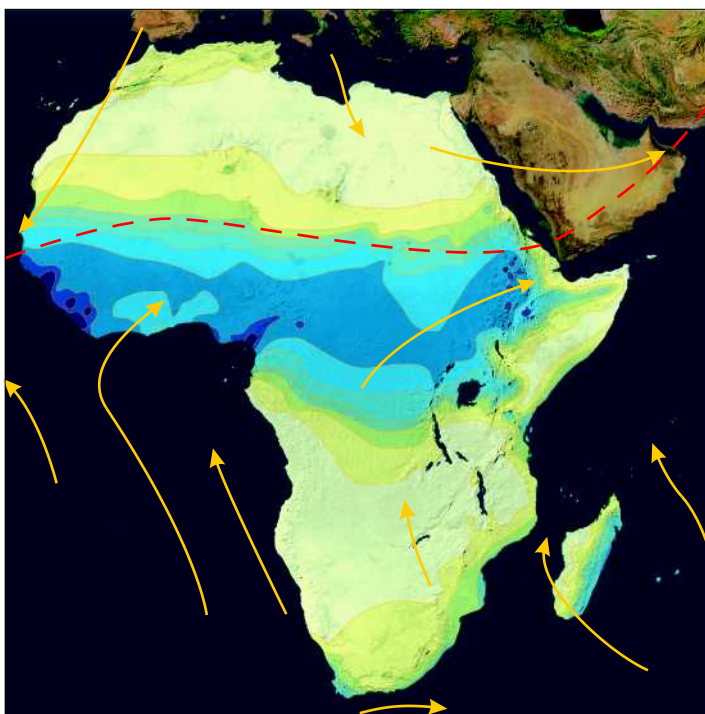
1b. Africa
Meteosat image
18 July 2003,
12:00 UTC.



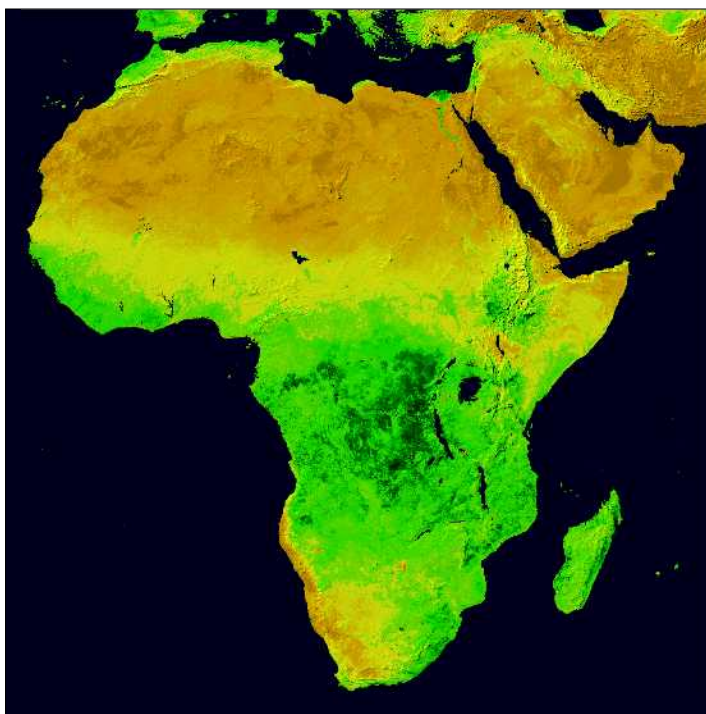
2a. Average precipitation
December to February.



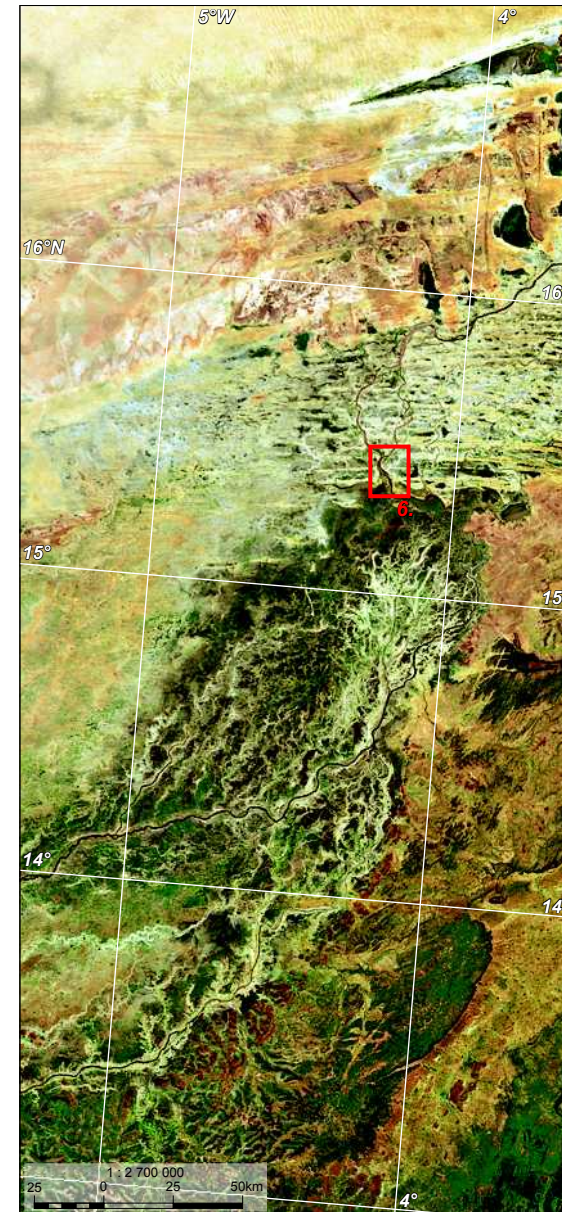
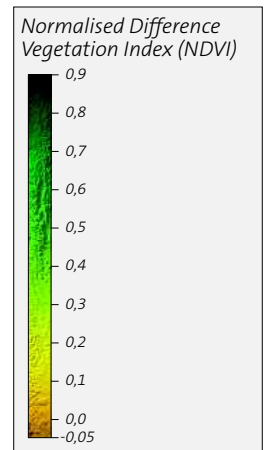
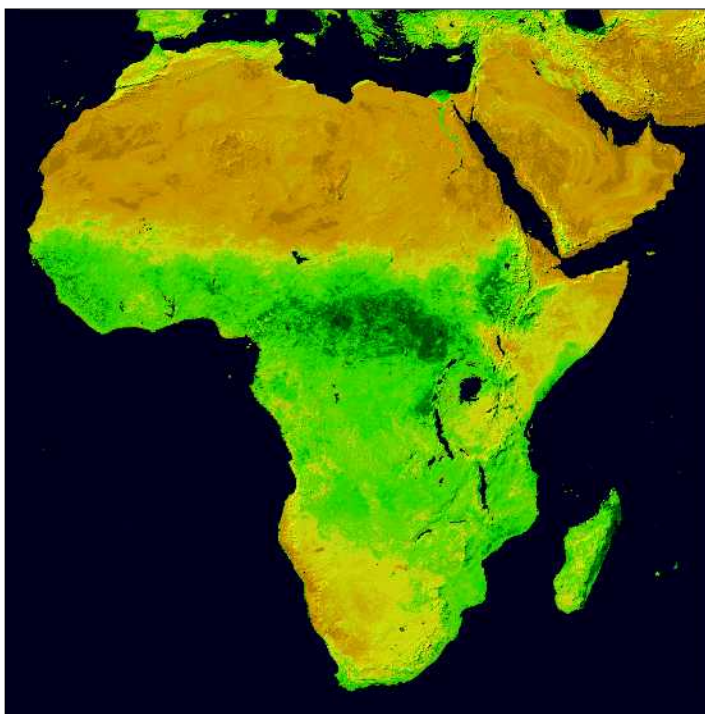
2b. Average precipitation
June to August.



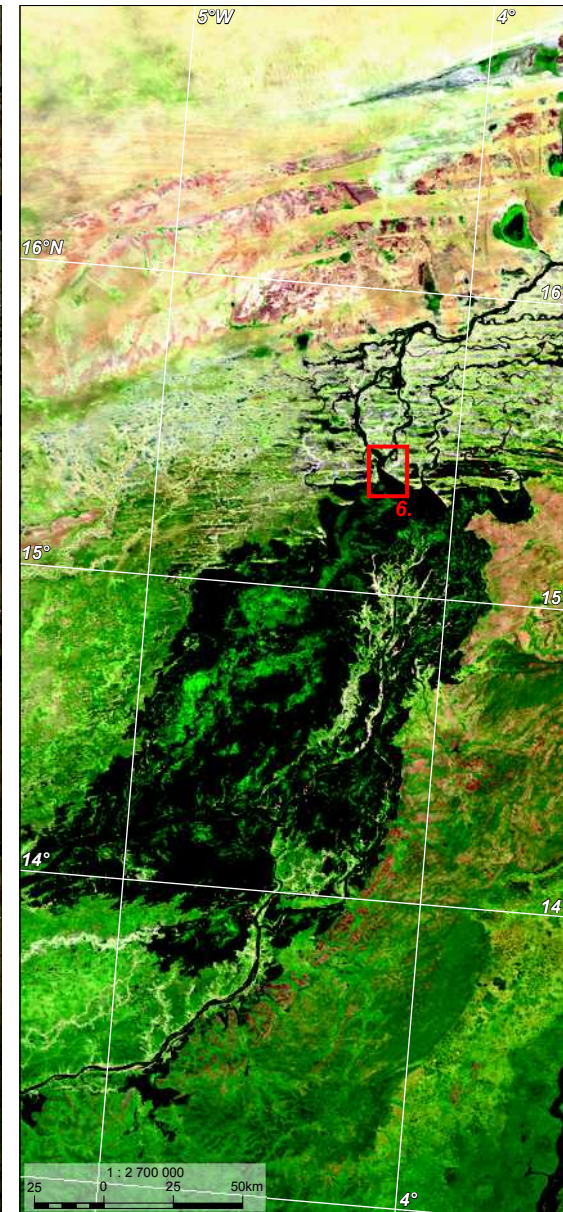
3a. Vegetation -
January 2004.



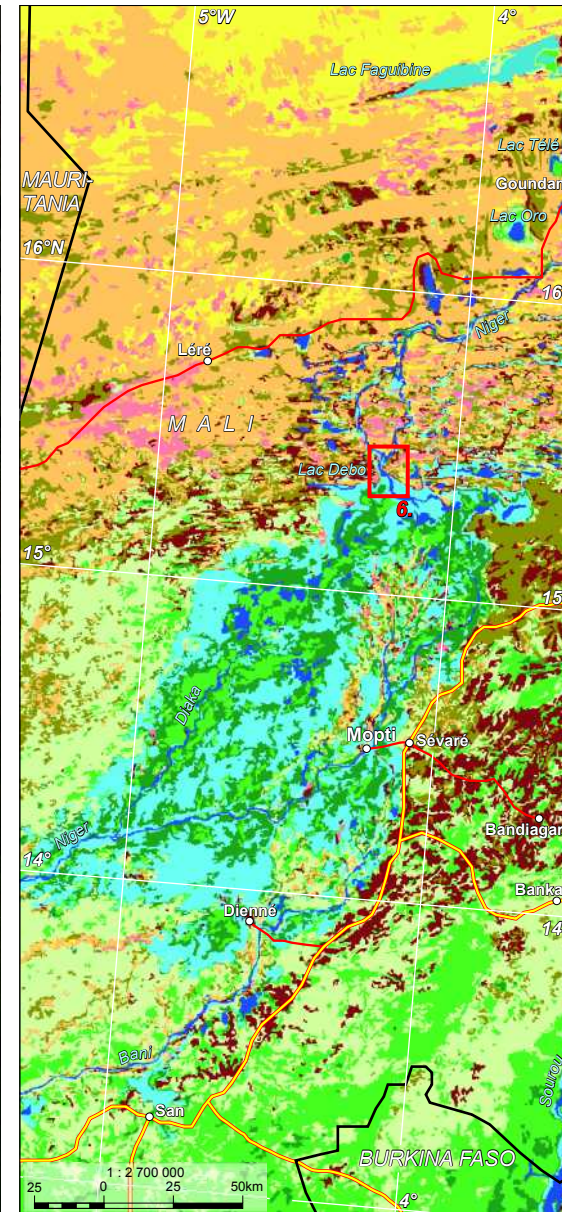
3b. Vegetation -
July 2004.



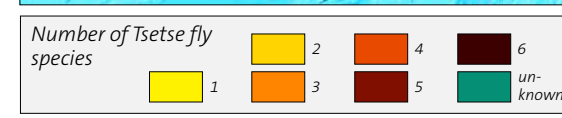
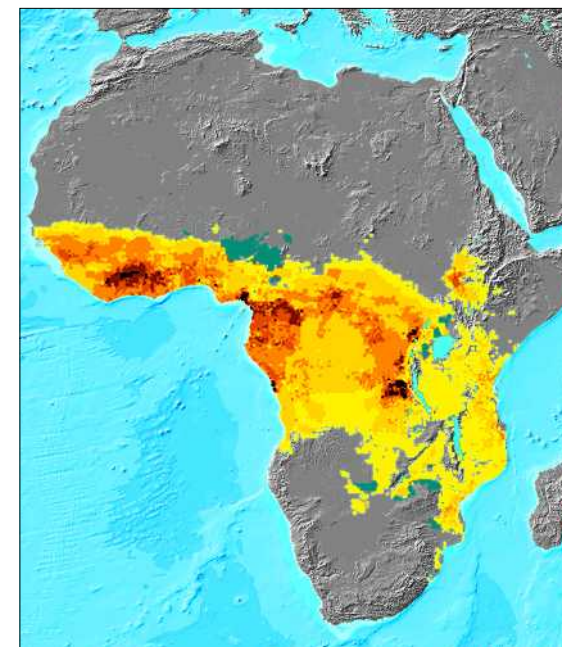
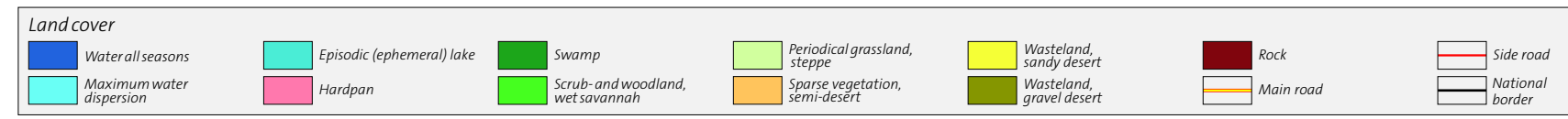
4a. Niger Inland Delta in June (2003).



4b. Niger Inland Delta in October (2003).



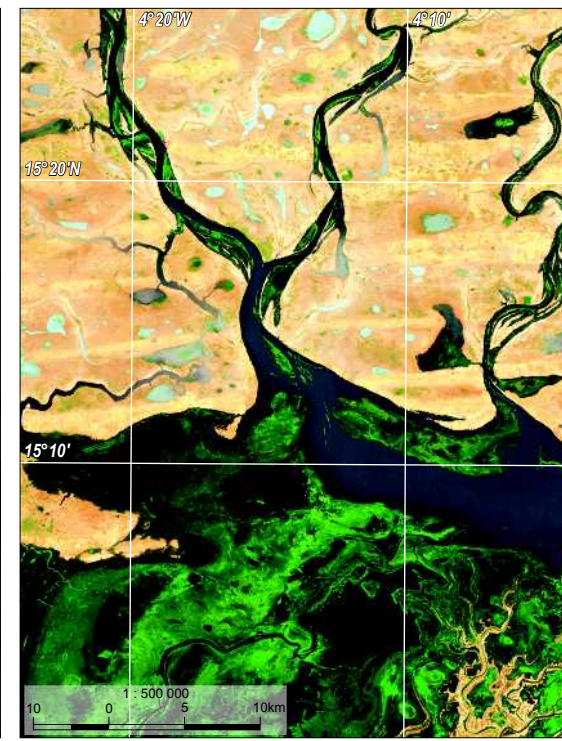
4c. Land cover of the Niger Inland Delta.



5. Tsetse fly species spread over humid regions.



6a. Niger Inland Delta, outflow of the Niger from Lake Debo in June (2001).



6b. Niger Inland Delta, outflow of the Niger from Lake Debo in October (2001).