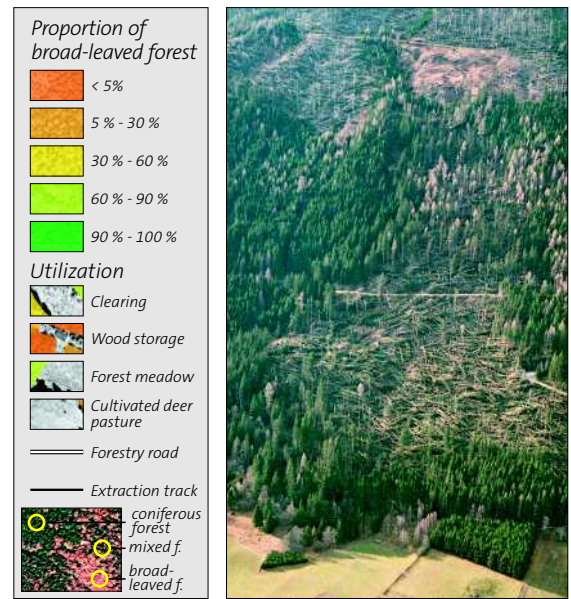
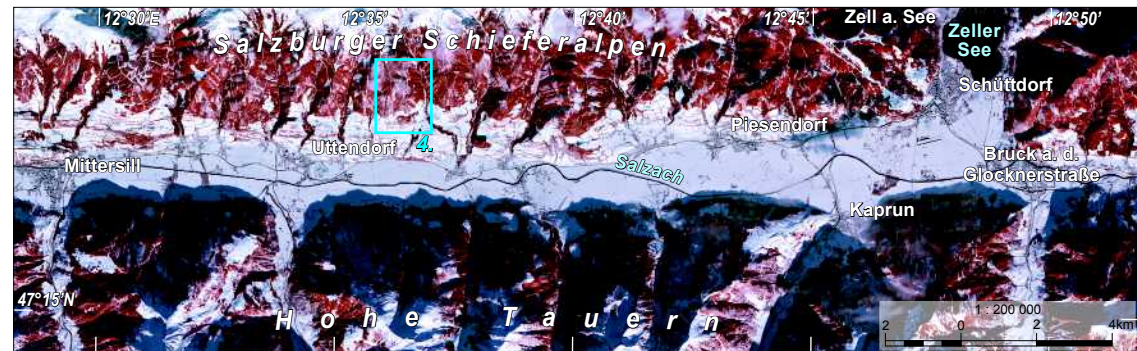


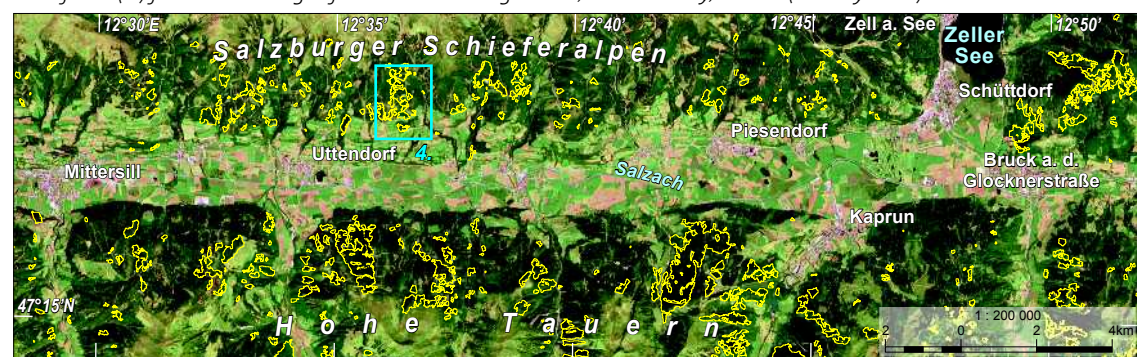
1a. Forest near Salzburg, Austria, infrared satellite image. 1b. Forest management units, Fuschl am See, Austria.



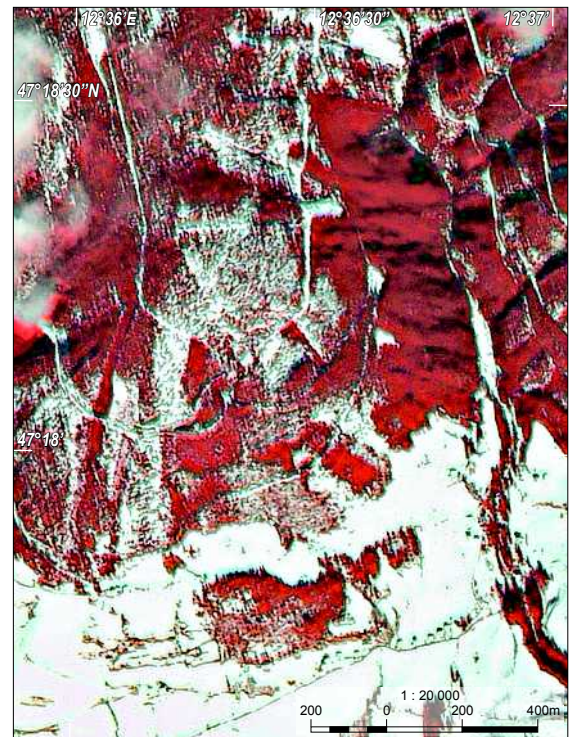
2. Windthrow, Niedere Tauern, Austria.



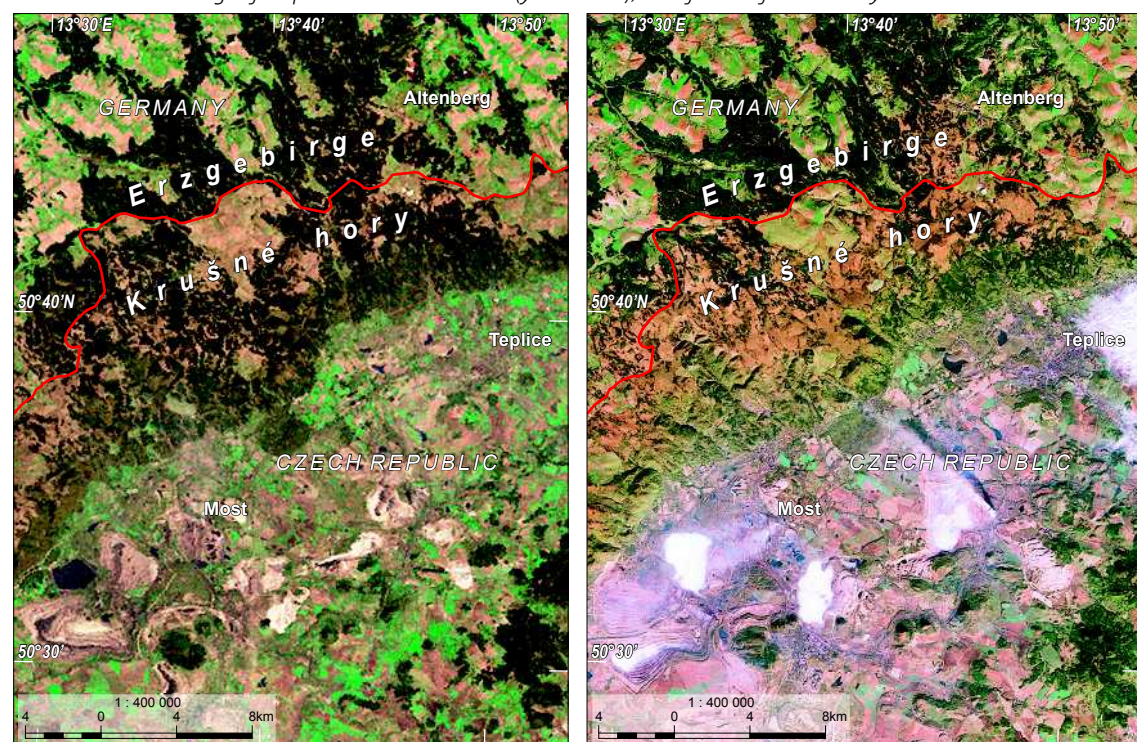
3a. Infrared false color image of windthrow damaged area, Salzach valley, Austria (January 2003).



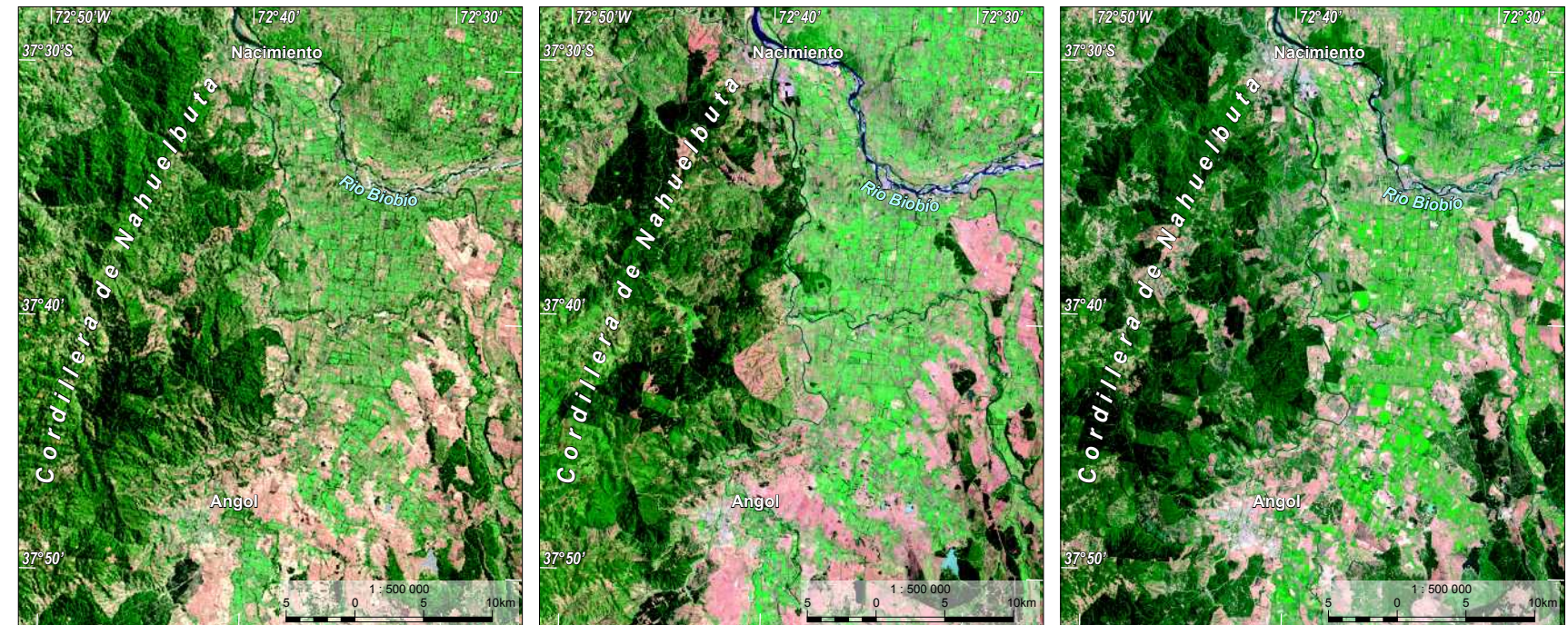
3b. Natural color image of suspected windthrow areas (yellow lines), classification from January 2003.



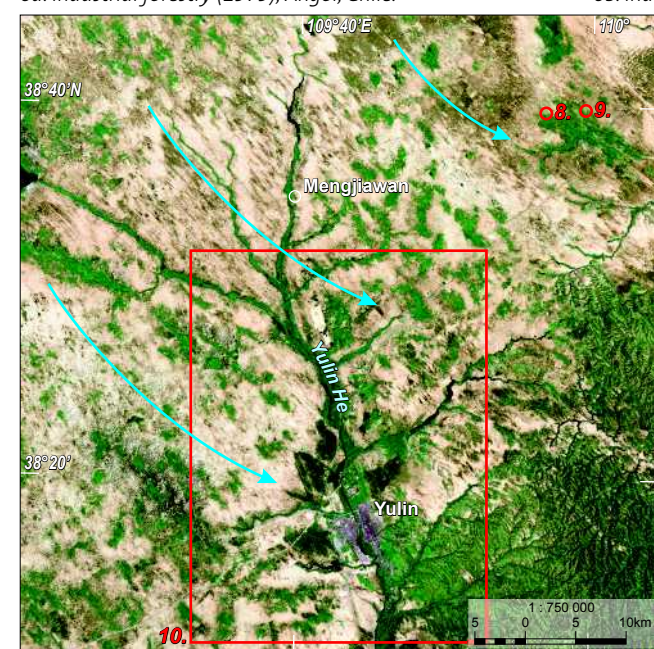
4. Windthrow areas, detail, near Uttendorf, Austria.



5a. Forest status (April 1975), Czech Rep./Germany. 5b. Forest status (October 1984), Ore Mountains. 5c. Forest status (August 2005), Ore Mountains.



6a. Industrial forestry (1979), Angol, Chile. 6b. Industrial forestry (1986), Angol, Chile. 6c. Industrial forestry (2000), Angol, Chile.



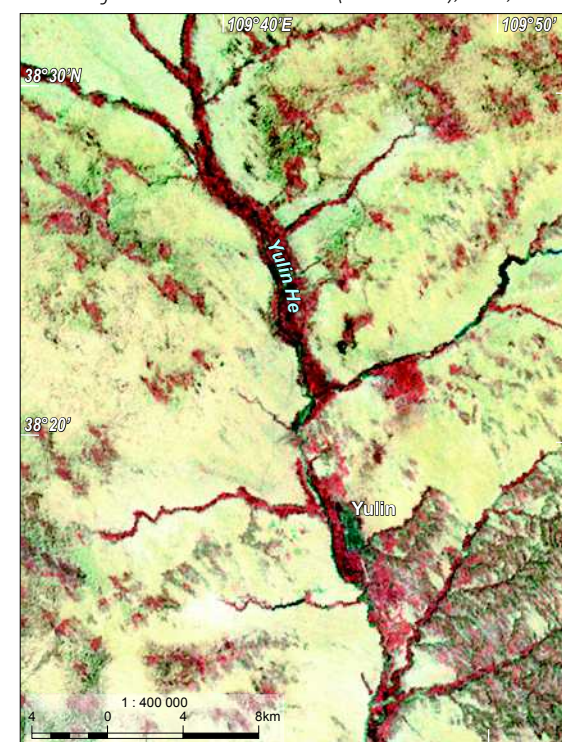
7. Desertification and wind erosion (blue arrows), Yulin, China.



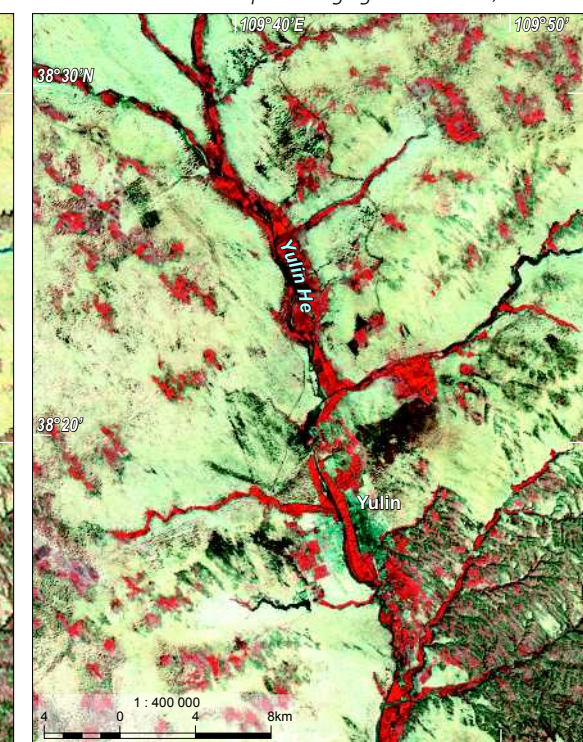
8. Shelter belts protecting agriculture land, near Yulin.



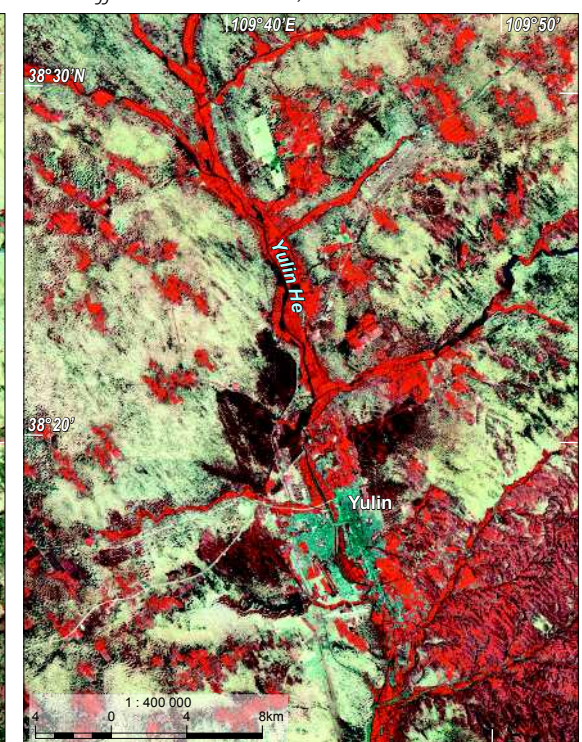
9. Afforestation near Yulin, detail.



10a. Afforestation for erosion control (IR 1978), Yulin, China.



10b. Afforestation for erosion control (IR 1989), Yulin, China.



10c. Afforestation for erosion control (IR 2002), Yulin, China.