

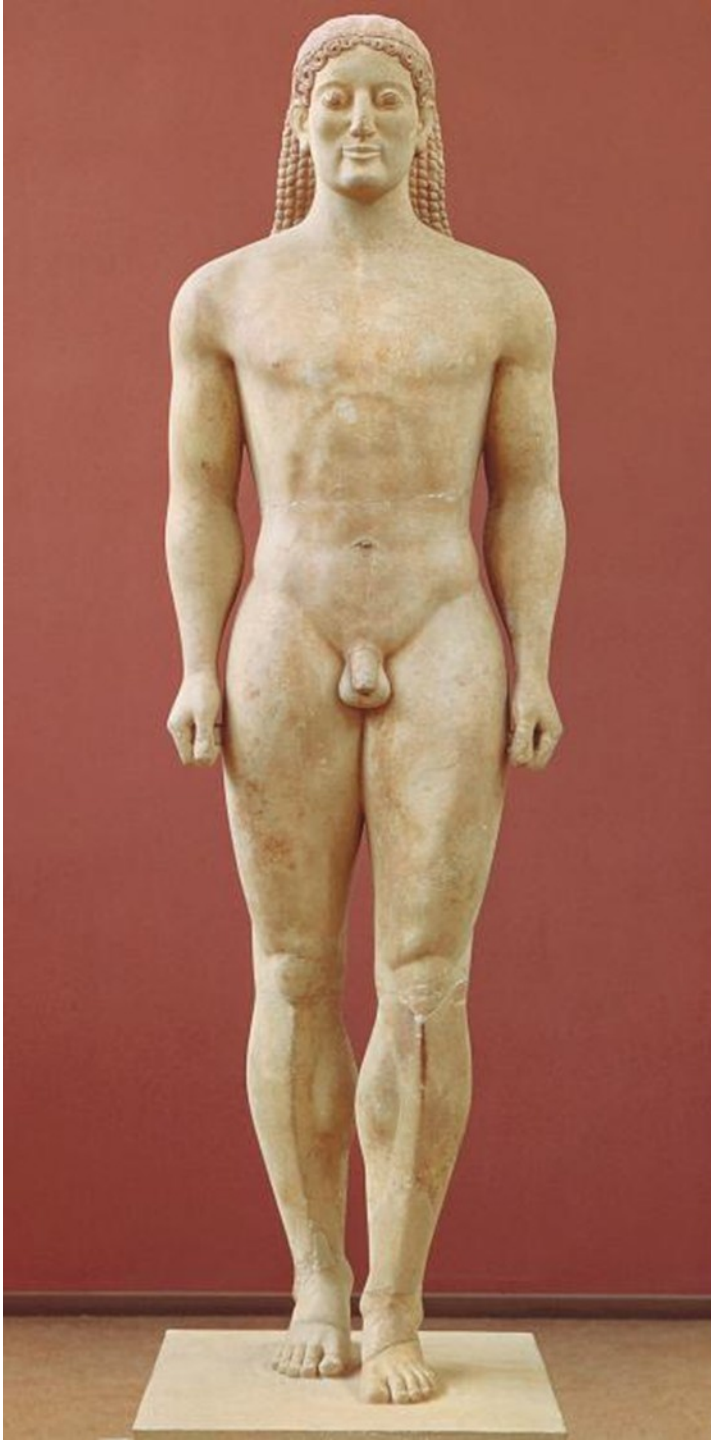
O ČEM NÁŠ SEMINÁŘ BUDE?









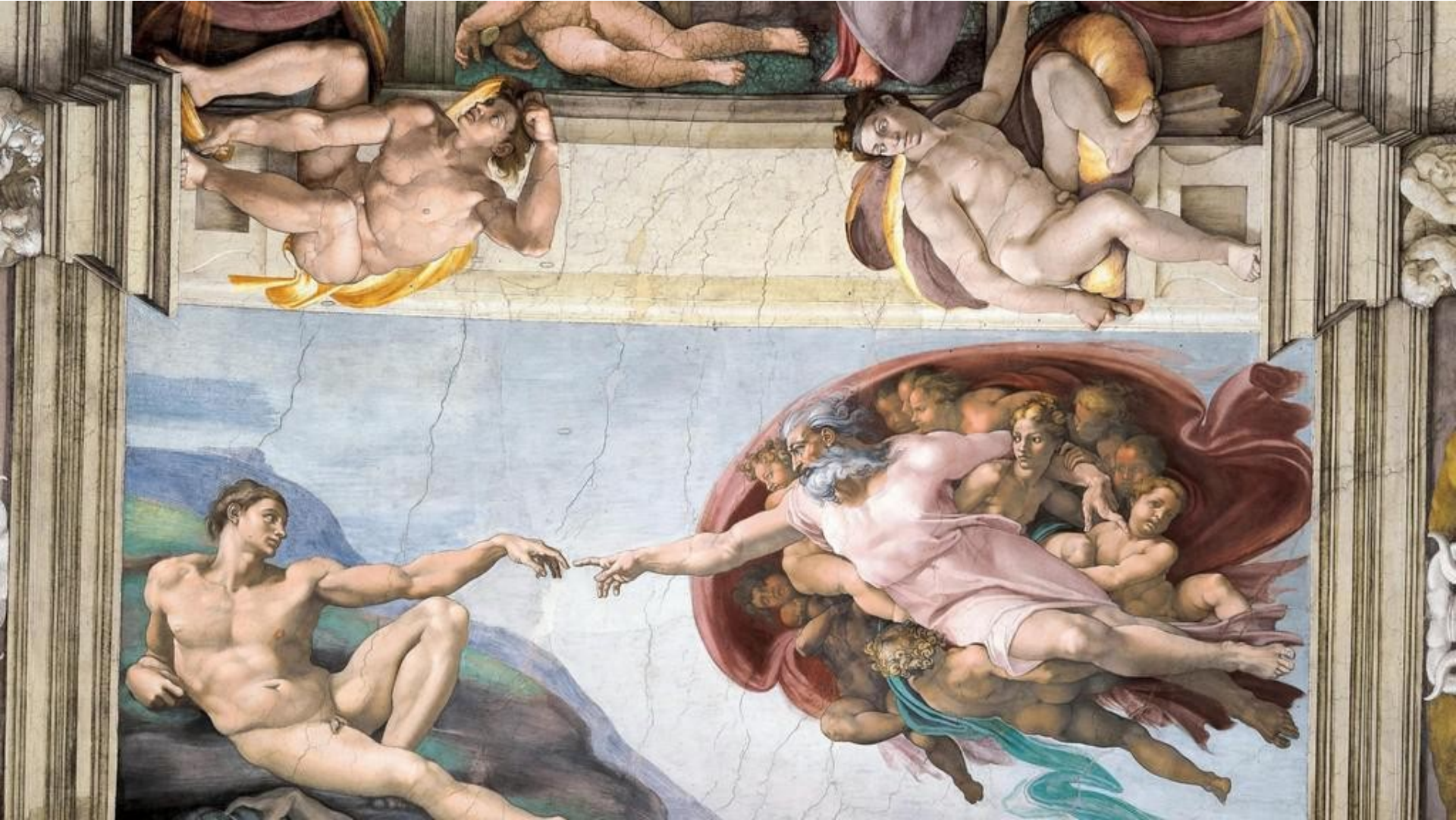




















No se puede mirar



30

El Libro. Como All Posters













1898

F. CHAMPENOIS

IMPRIMEUR-ÉDITEUR

66, Boul. St. Michel,

PARIS

1898











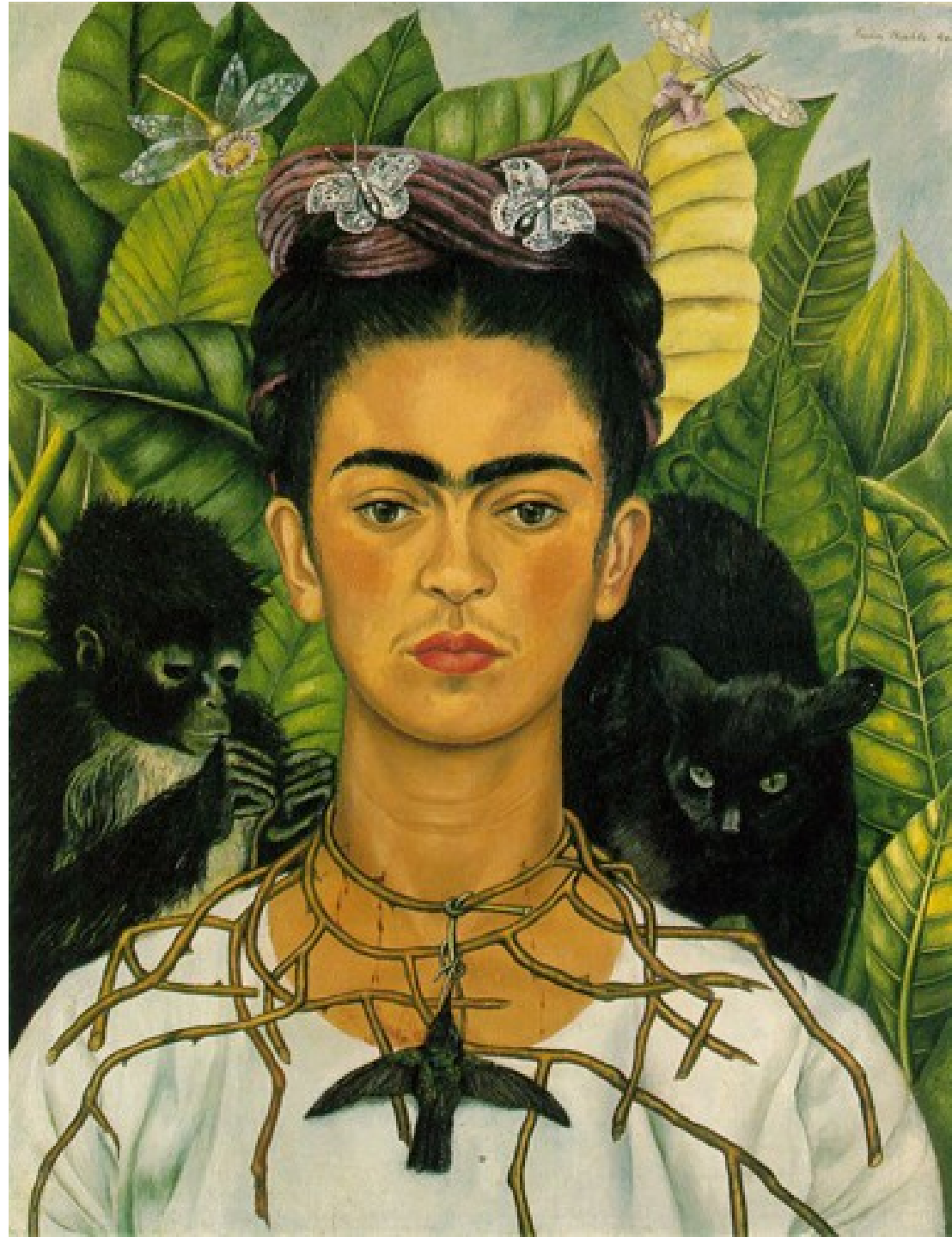




show her
it's a man's world



Van Heusen®







SO THE
HARDER
A WIFE
WORKS,
THE CUTER
SHE LOOKS!

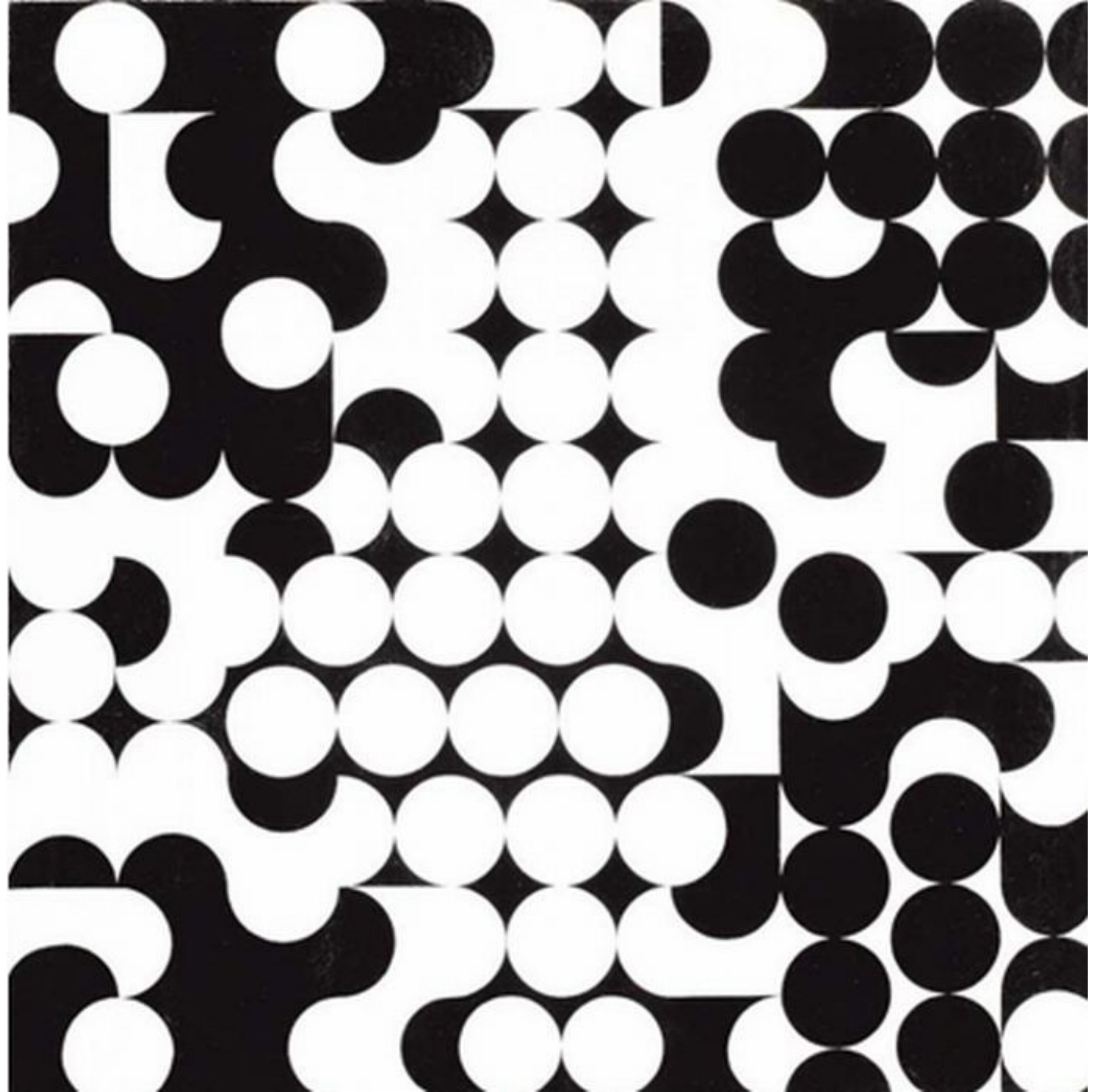
L GOSH, HONEY, YOU SEEM TO THRIVE ON COOKING, CLEANING AND DUSTING- AND I'M ALL TUCKERED OUT BY CLOSING TIME. WHAT'S THE ANSWER?

VITAMINS, DARLING! I ALWAYS GET MY VITAMINS

Kellogg's
DEB













chair, a *tronic* v; *chaire* (lamp) and *chey*;
(ix) *cathedra*, *cathedral* (adj) and (n), *cathodode*;
elephant *chadral*, *chadon*, q.v. sup.

1. *Ch* *Archa*, a seat (cf *Ch* *Archa*, to sit, and
sit, *B* *Ar*), combines with *Archa*, down (cf the prefix
Archa), to form *Archa*, a backed, four-legged,
often two-armed seat, whence *L*, *Archa*, B,
bishop's chair, *ML*, professor's chair, hence dignity,
as in 'he speaks *ex cathedra*', as *Archa*—*Ar* as if
down—a professor's chair, hence with authority,
L, *Archa* has *L*, *Archa*, *Ar* *Archa*—*Ar* sup
Archa; and the secondary *ML*, *Ar* *Archa*
Archa, whence *L* legal *Archa*.

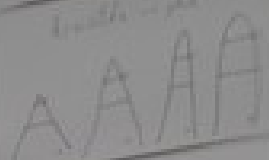




ooooo



kkkkk



kkkkk

