

Souhrn ze semestrálních cvičení CV0 a CV1

27. 9. 2018

Ze0102 Kartografie

Filip Dohnal

Úvodem

Podepsat mapu

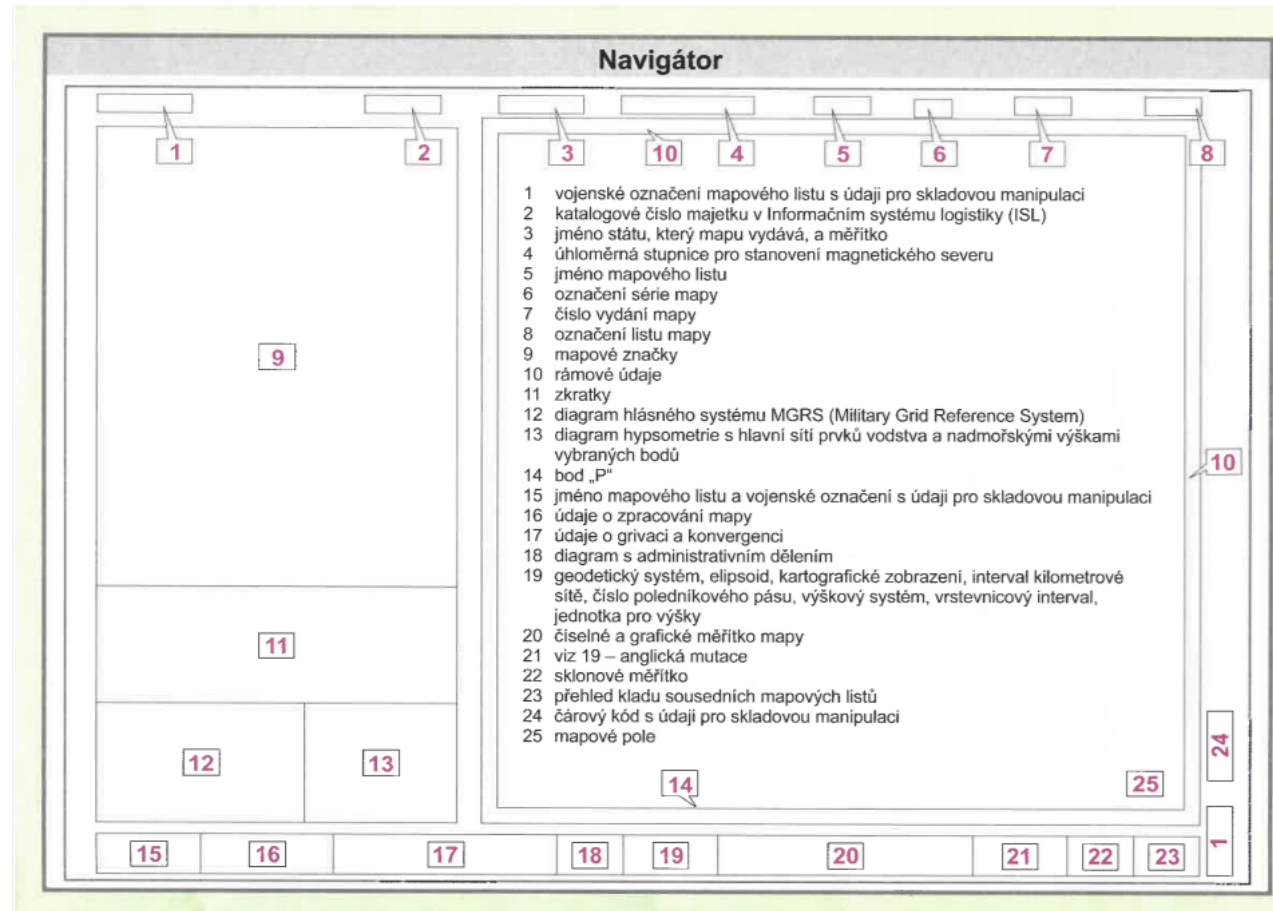
Dle návodu níže mapu složit

https://www.youtube.com/watch?v=i7vIcgfBa_0

Terénní reliéf

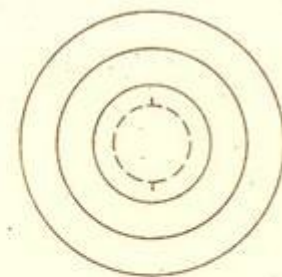
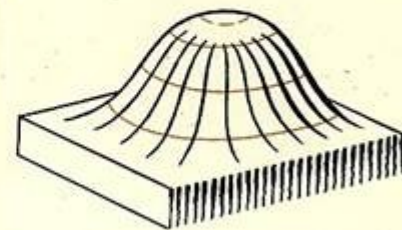
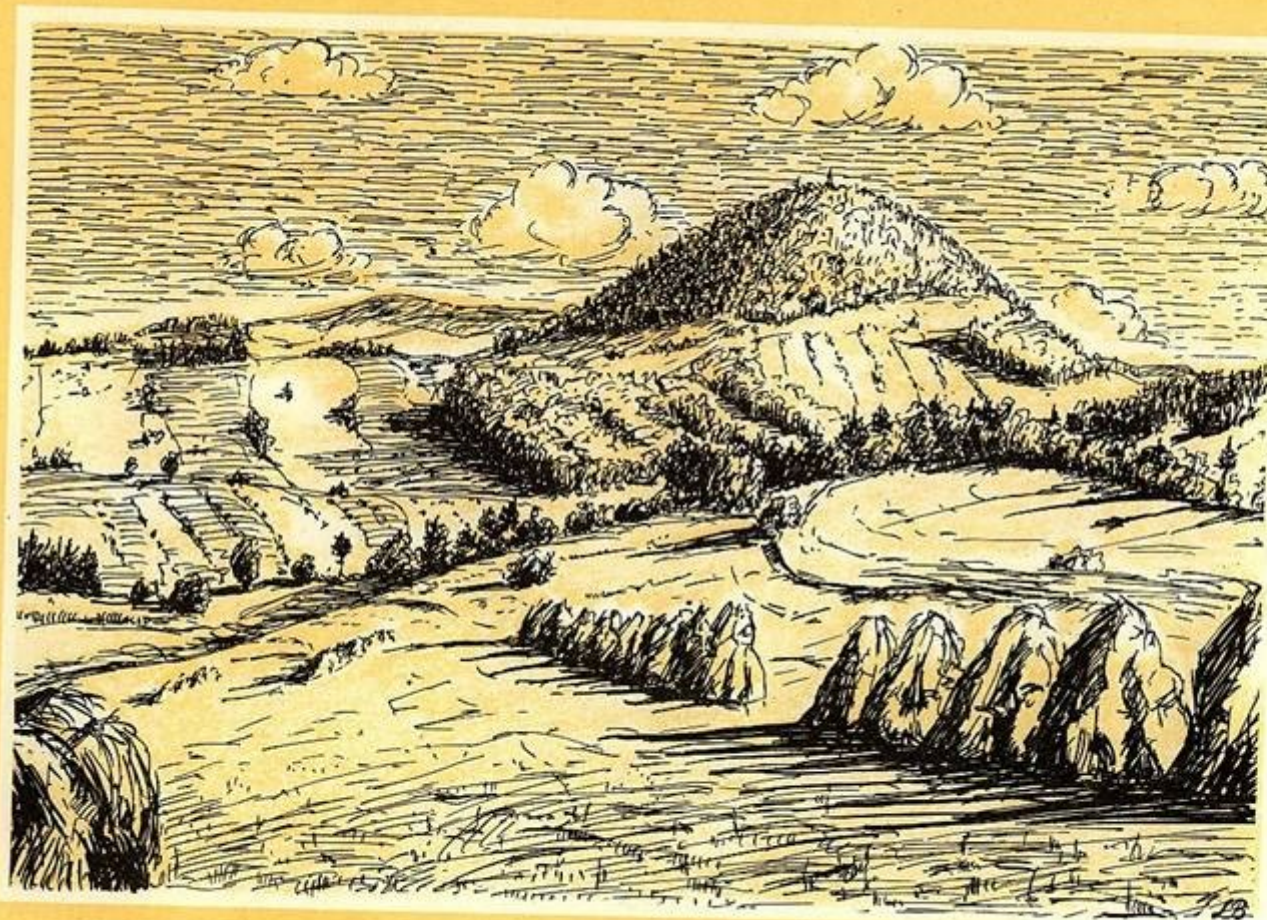
- Charakterizuje horizontální a vertikální členitost zemského povrchu
- Nejstálejší složka zemského povrchu
- Skládá se z dílčích terénních tvarů:
 - Vyvýšené terénní tvary
 - Vhloubené terénní tvary

Kompozice topografické mapy 1:25000

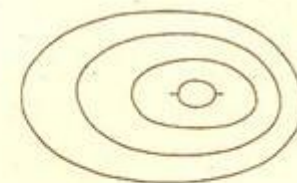
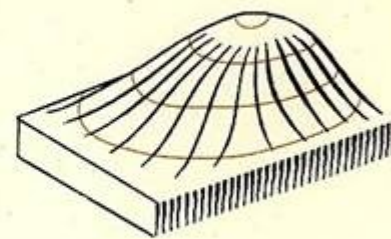
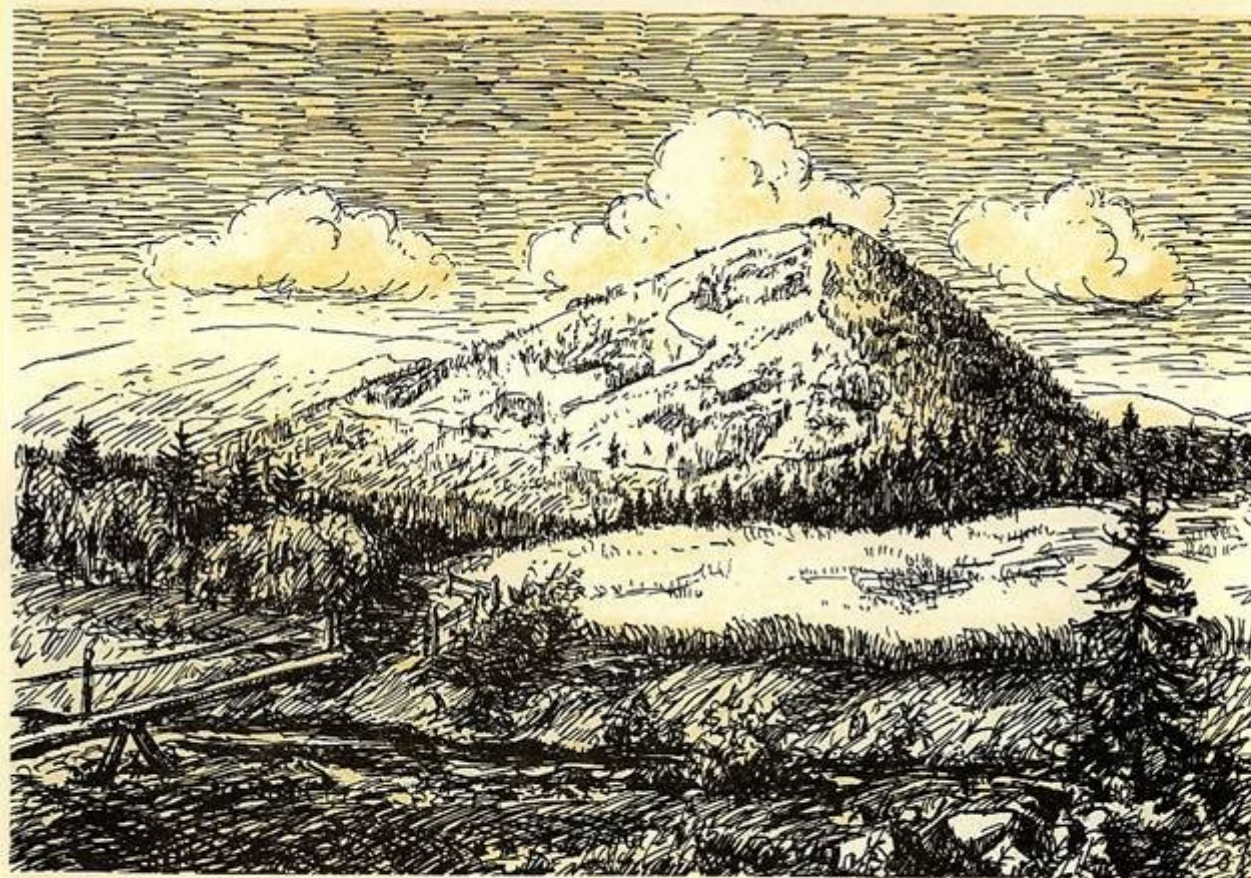


Terénní tvary

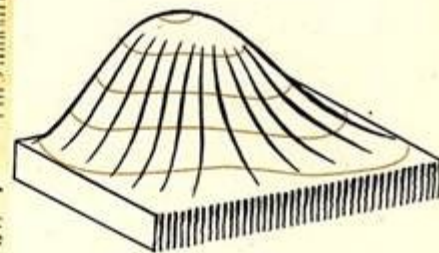
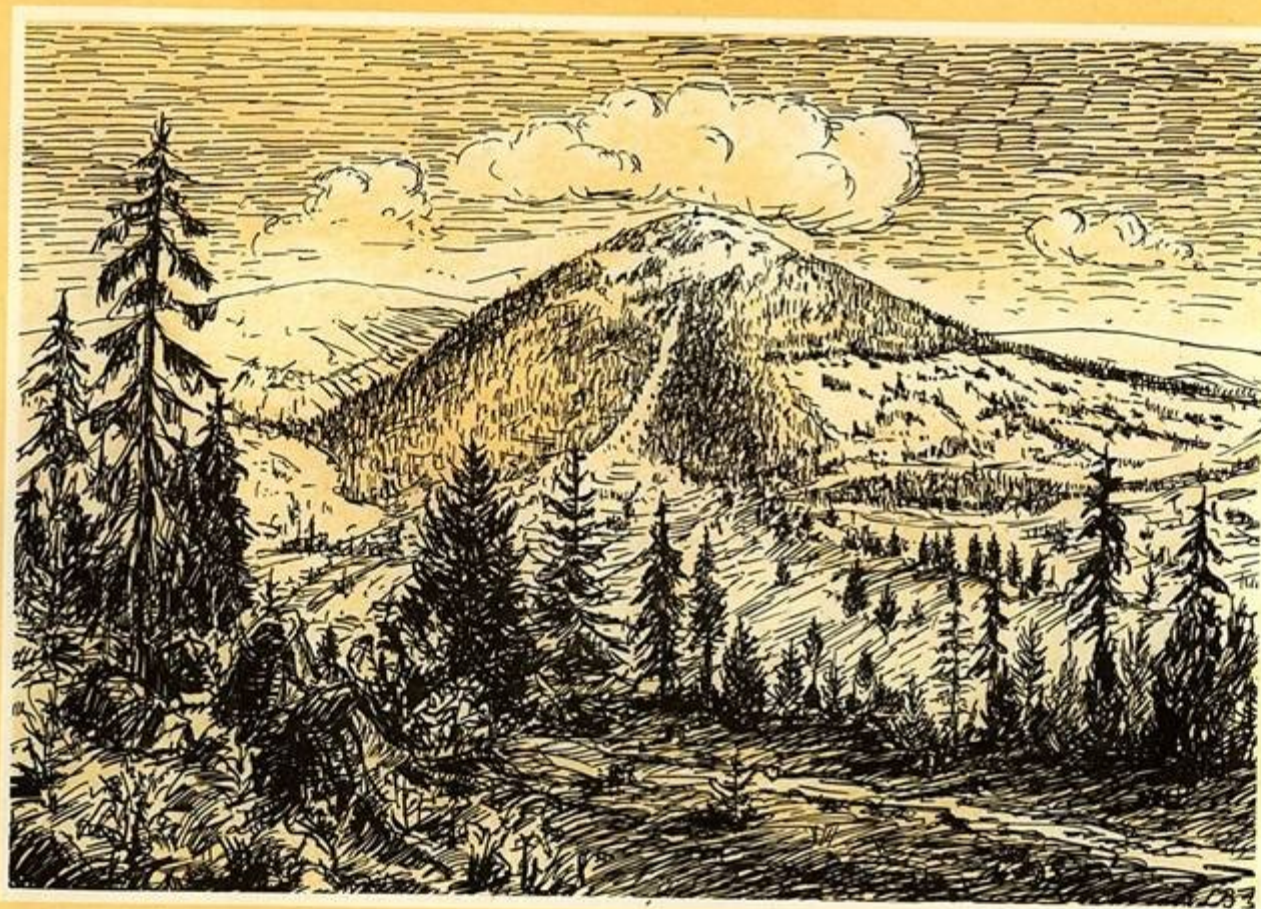
- terénní tvary dělíme:
 - vyvýšení
 - vhloubené
- další dělení:
 - přirozené
 - umělé
- podle polohy dělíme na:
 - na vrcholu vyvýšeniny
 - na úbočí
 - v údolí



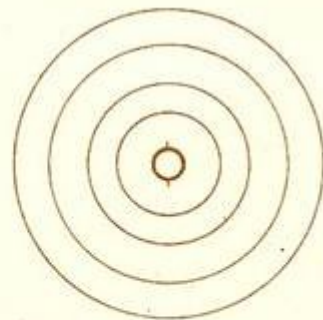
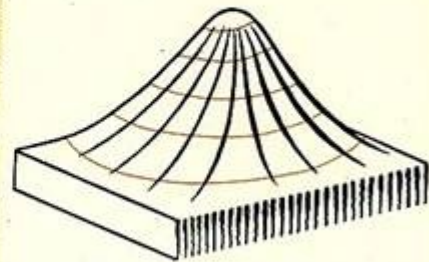
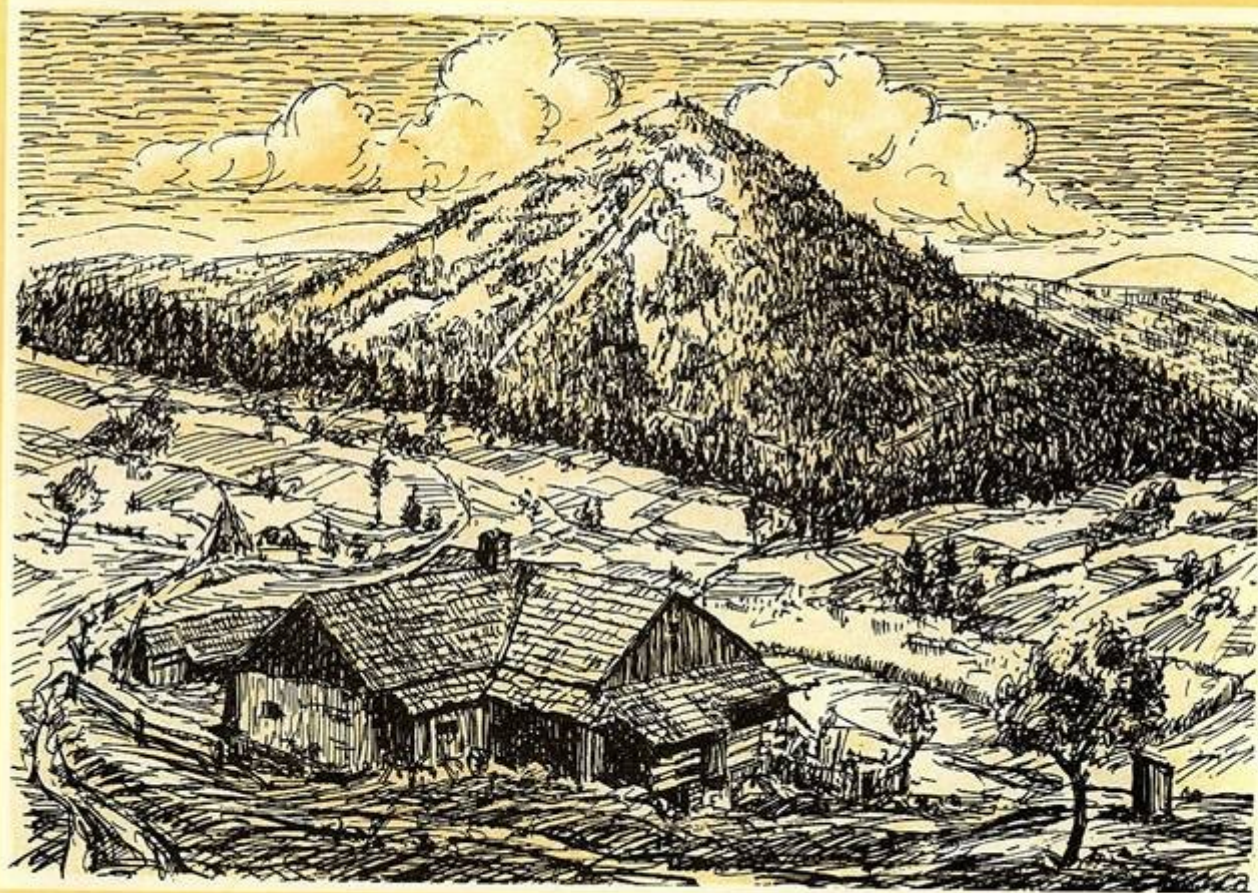
① Kupa s tvarovou čarou kruhovitou



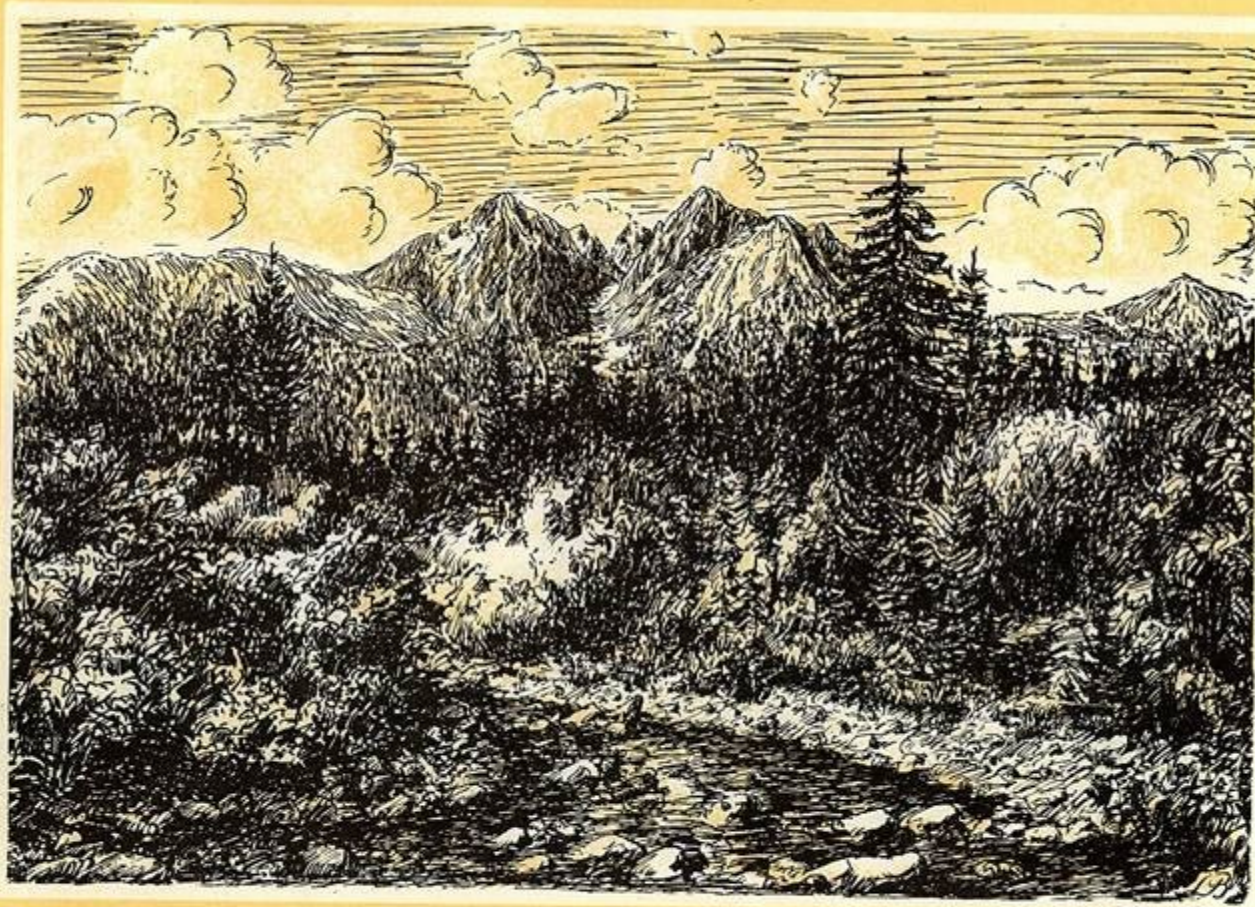
② Kupa s tvarovou čarou eliptickou



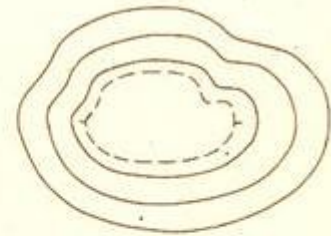
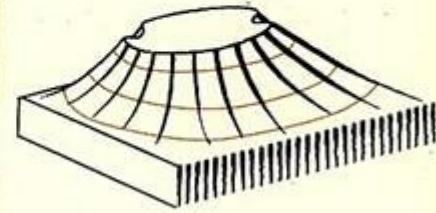
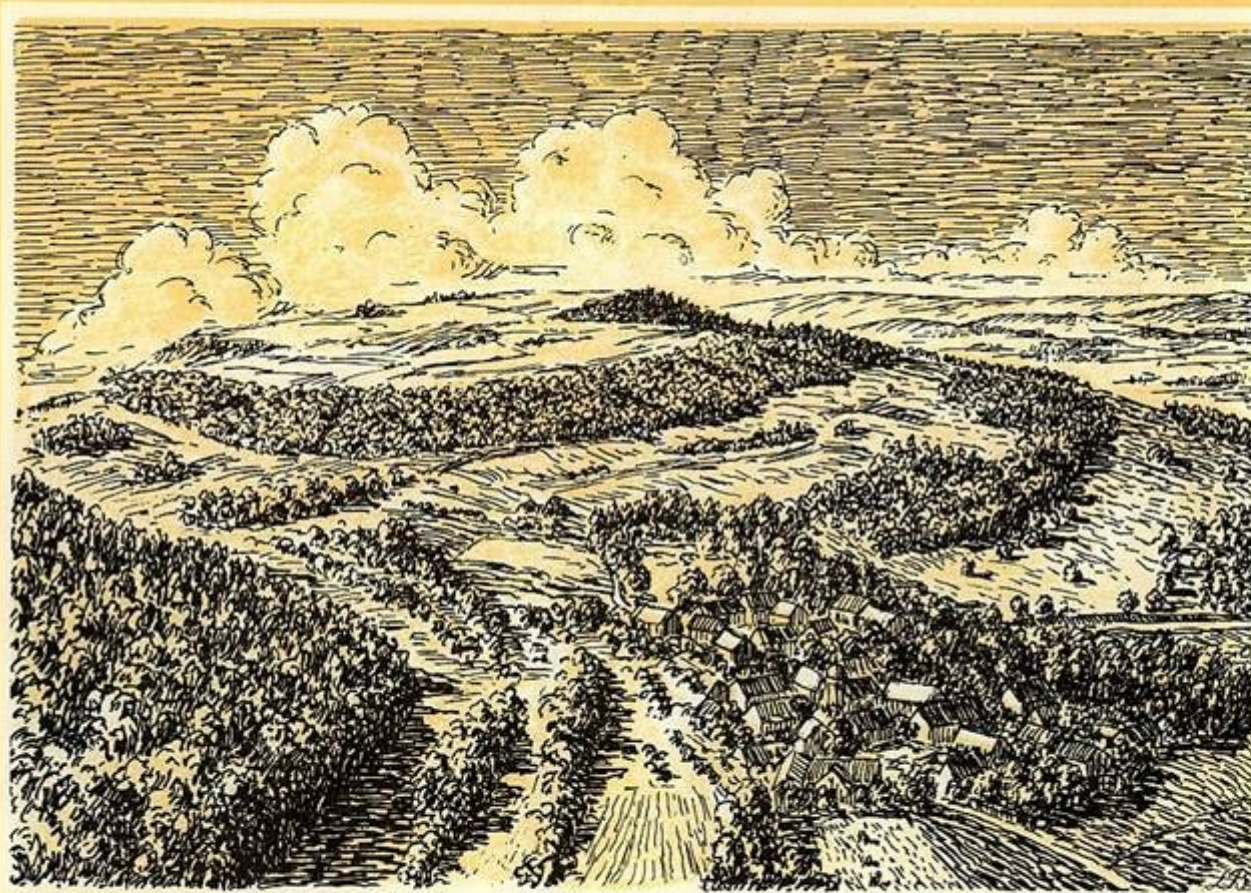
③ Kupa s tvarovou čarou nepravidelnou



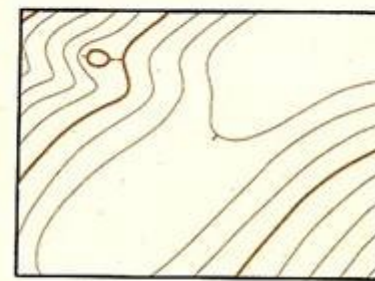
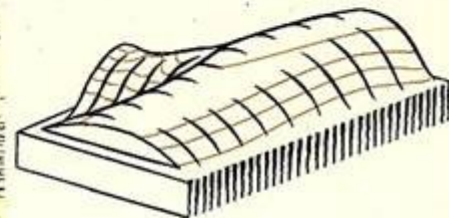
④ Kužel



⑤ Štít

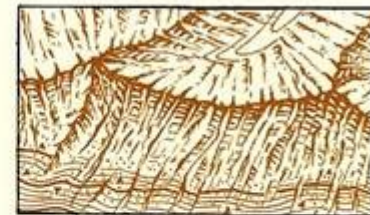
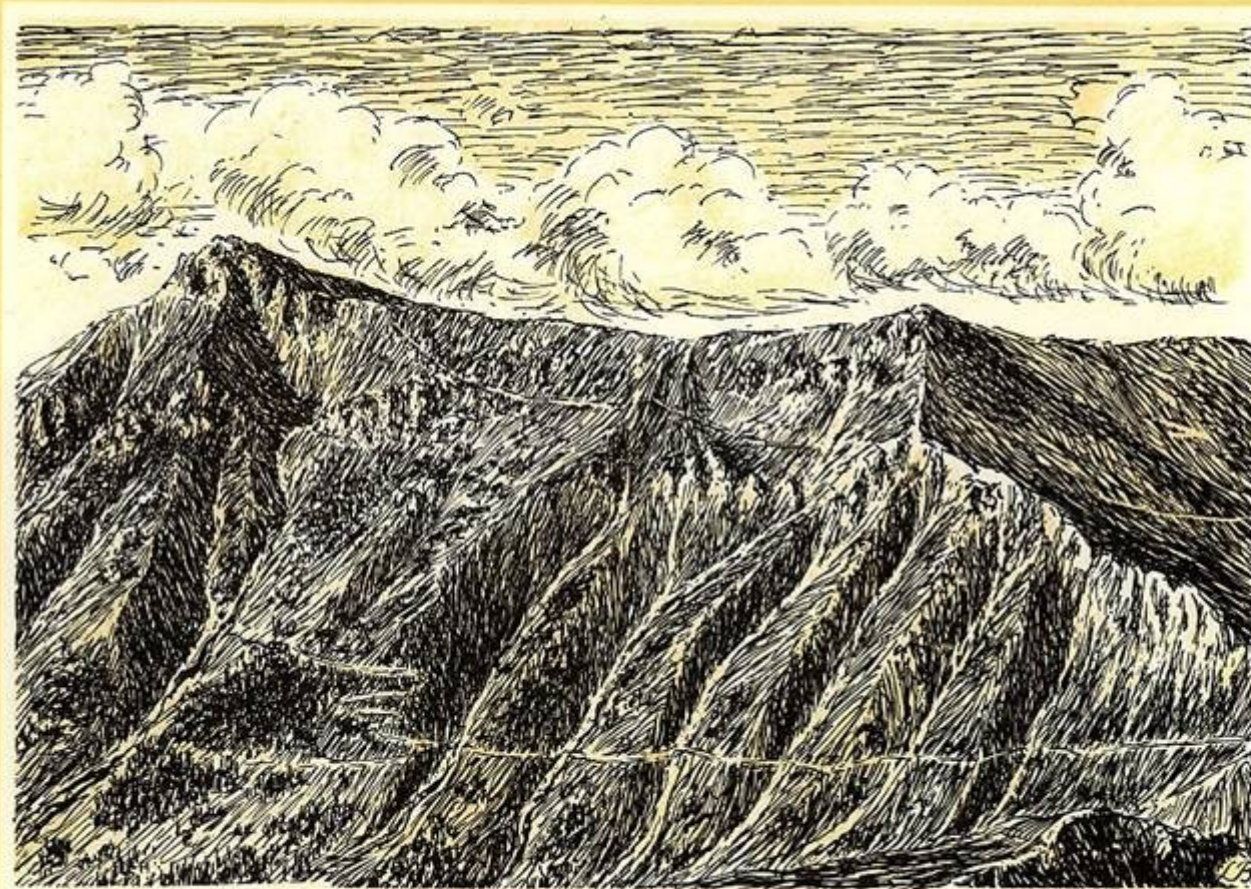


⑥ Vrcholová plošina

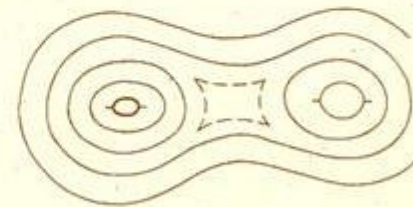
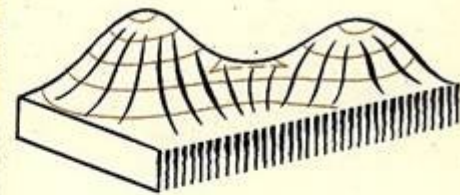
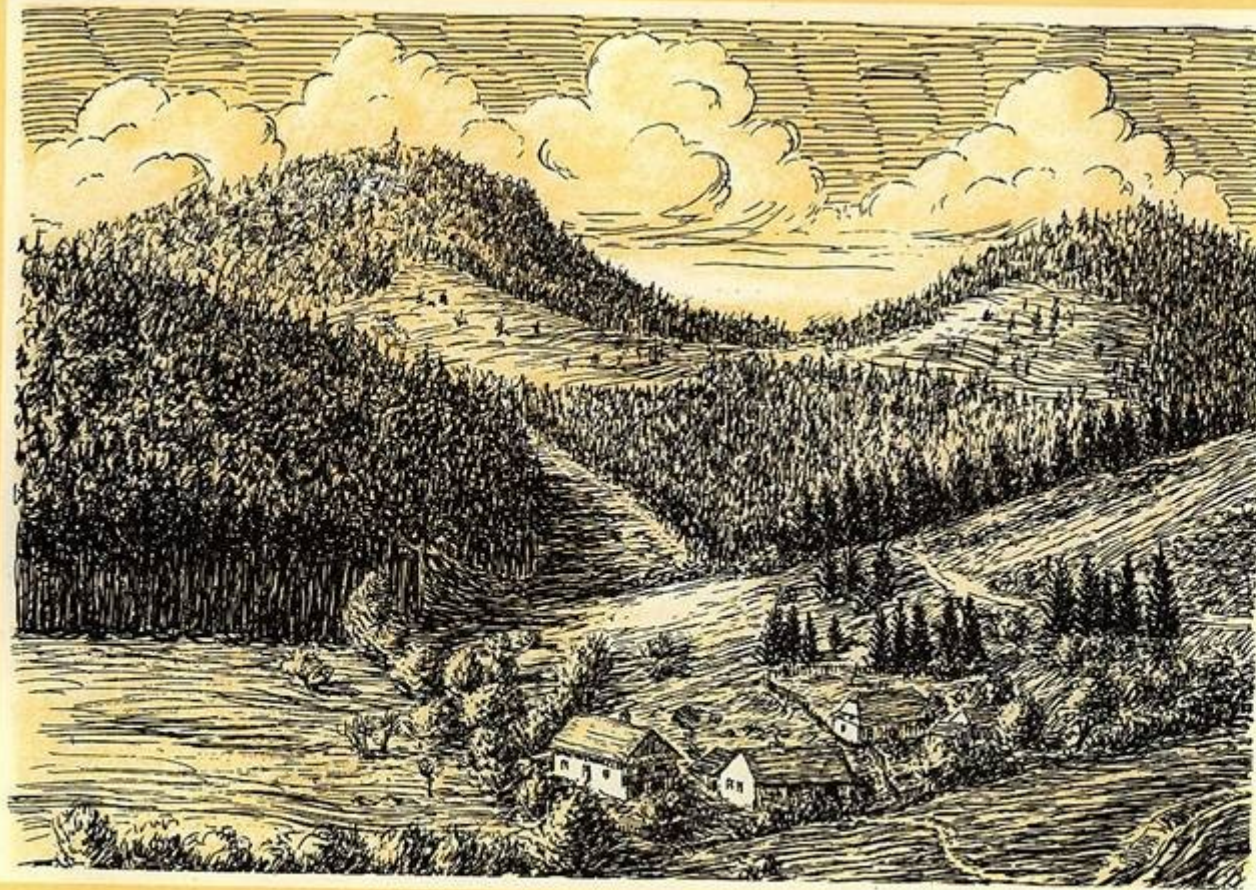


⑦ Vodorovný hřbet klenutý

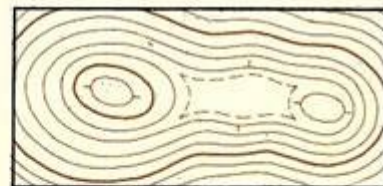
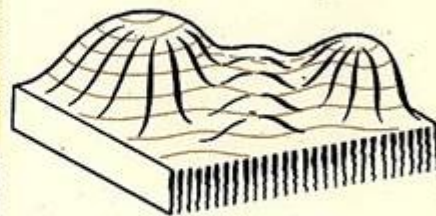
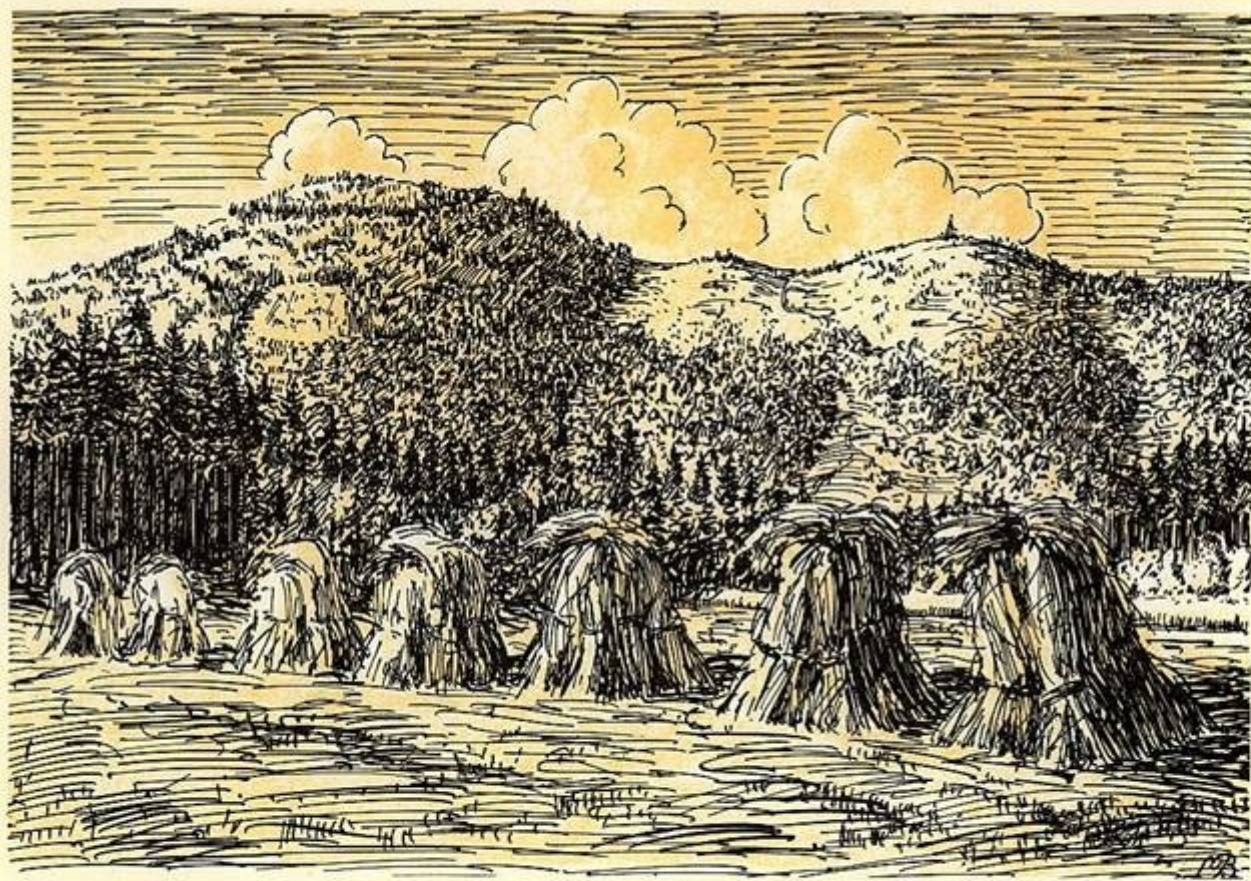
95-6,55



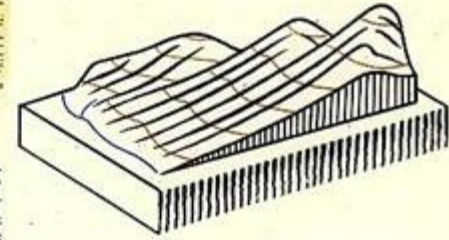
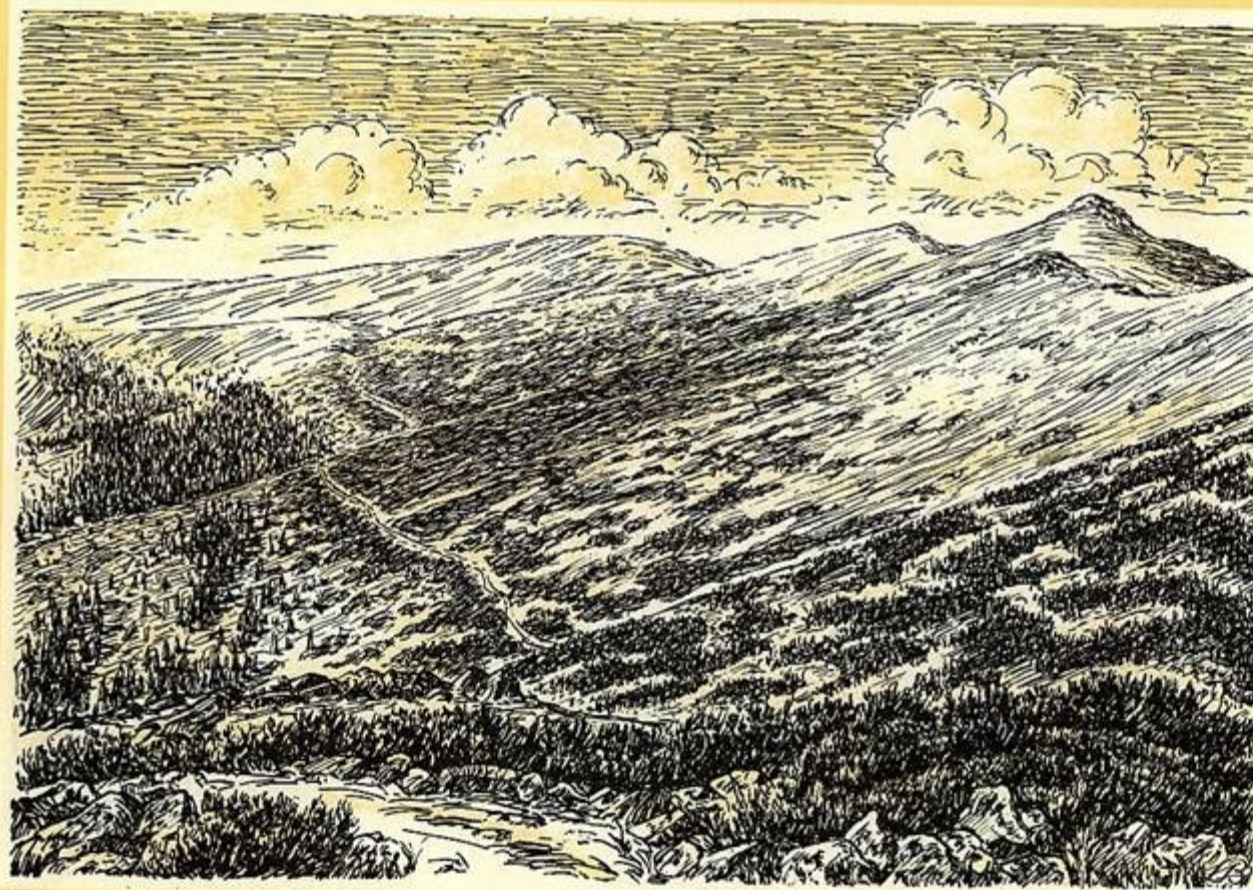
⑧ Vodorovný hřbet ostrý



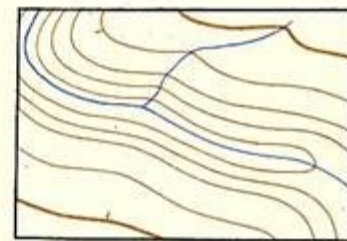
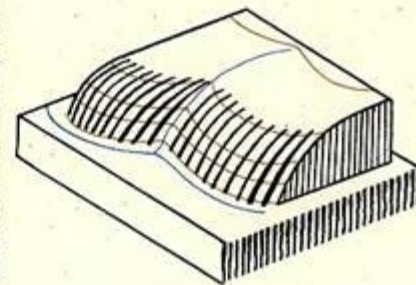
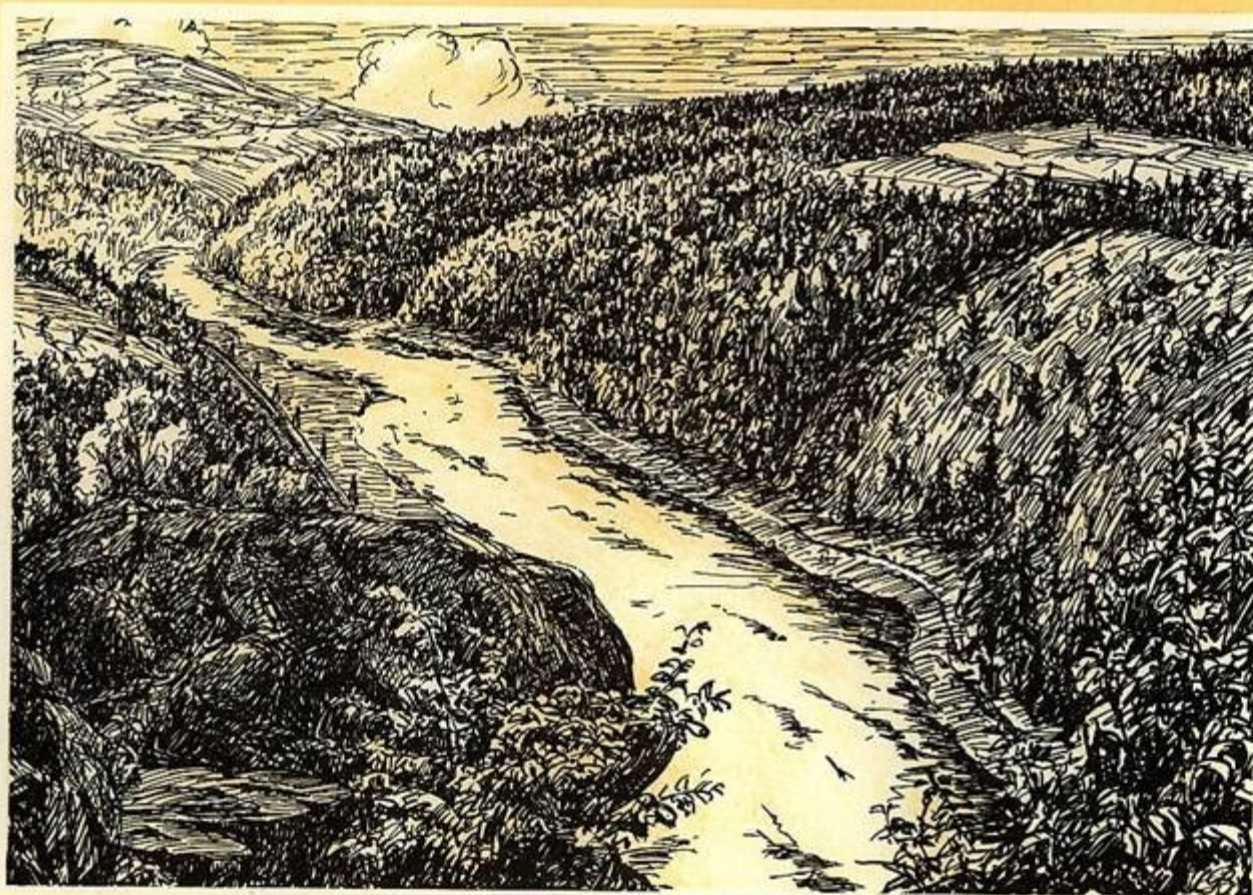
⑨ Pravidelné sedlo podélné



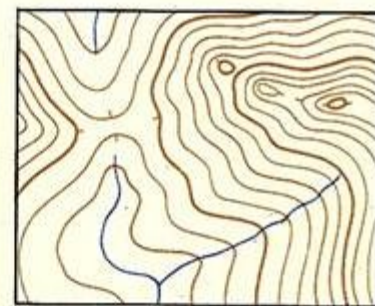
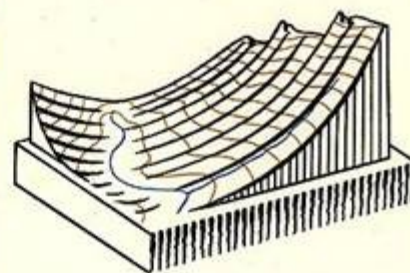
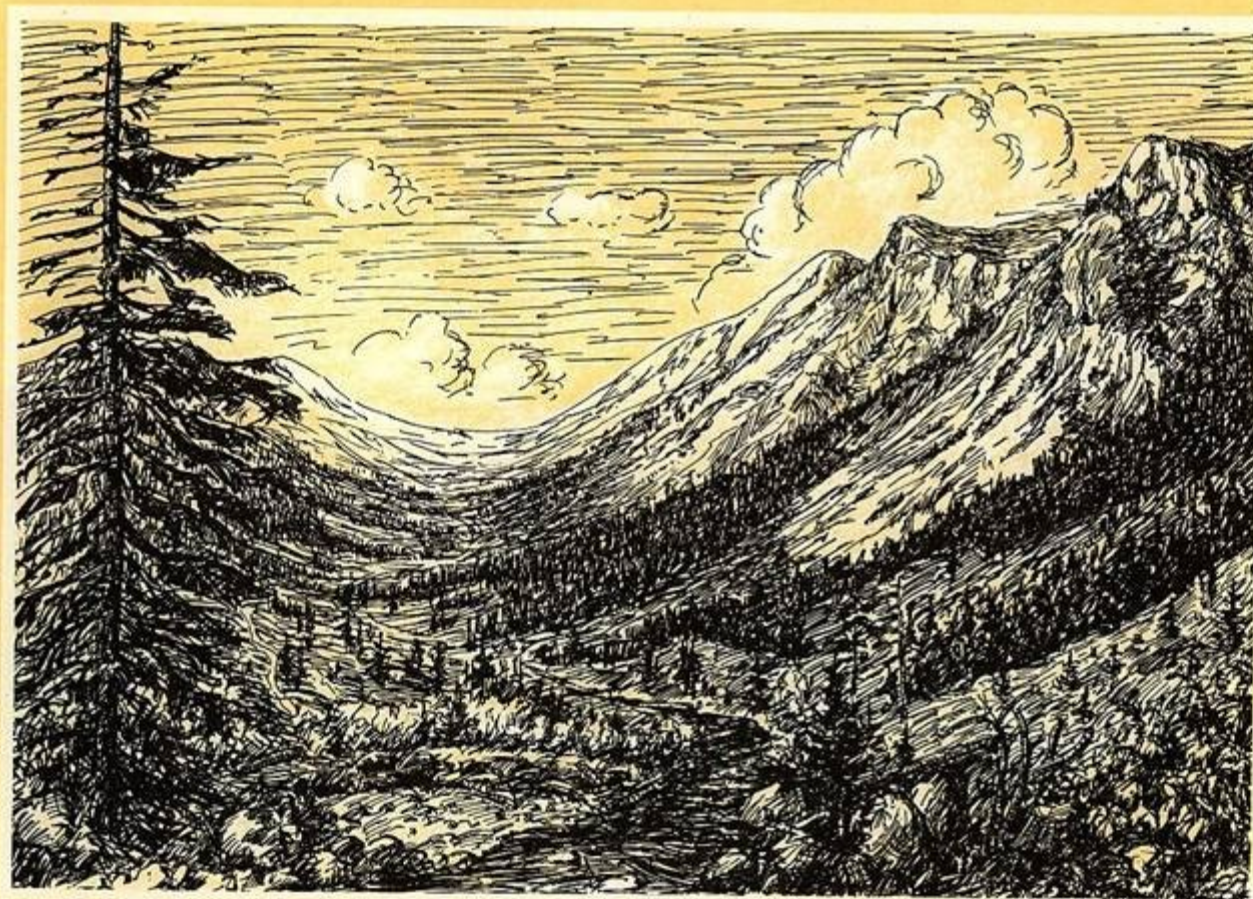
⑩ Nepravidelné sedlo



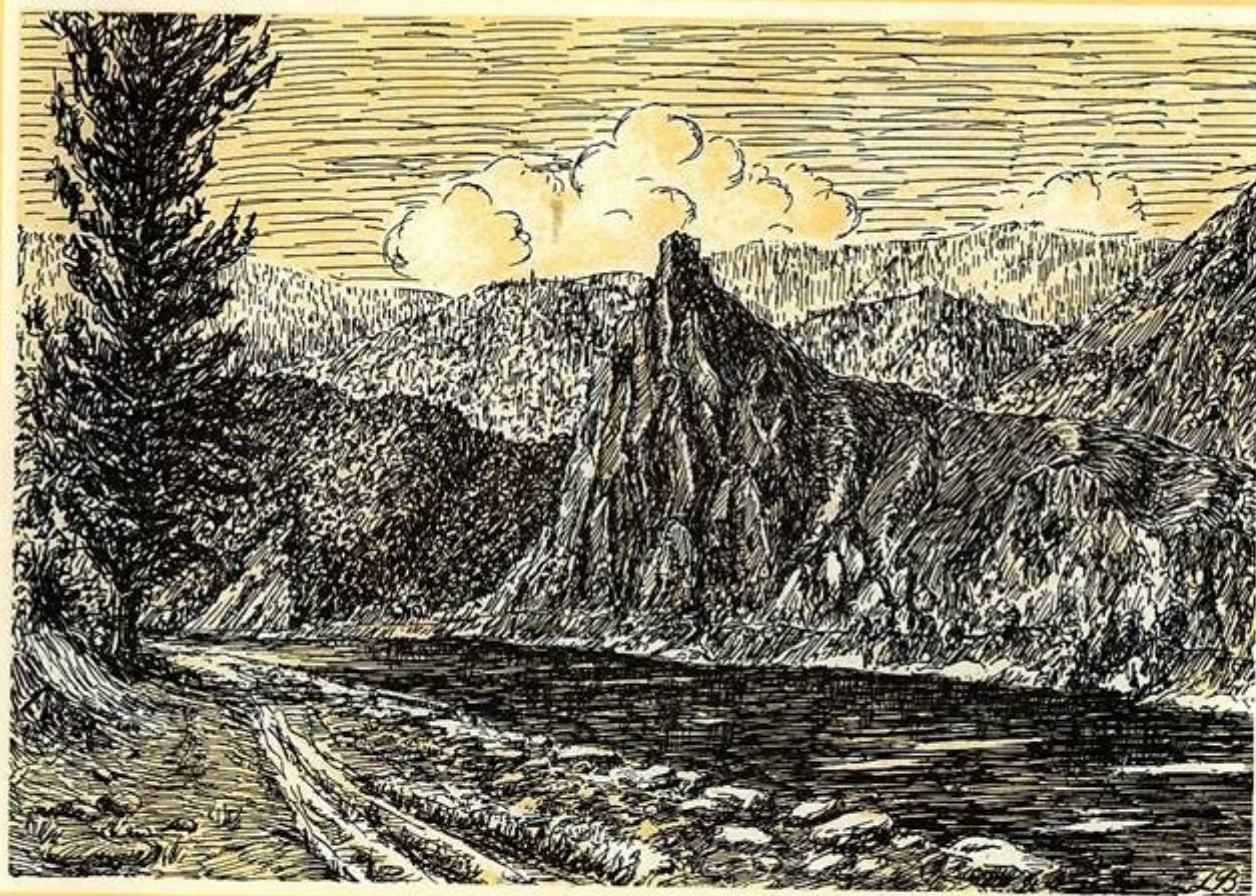
⑪ Svah rovný (stejněměrný sklon)



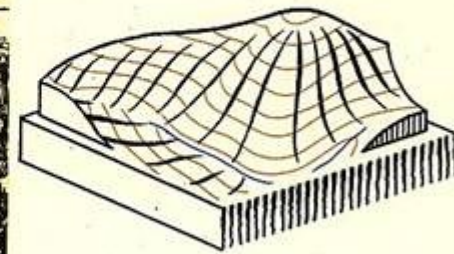
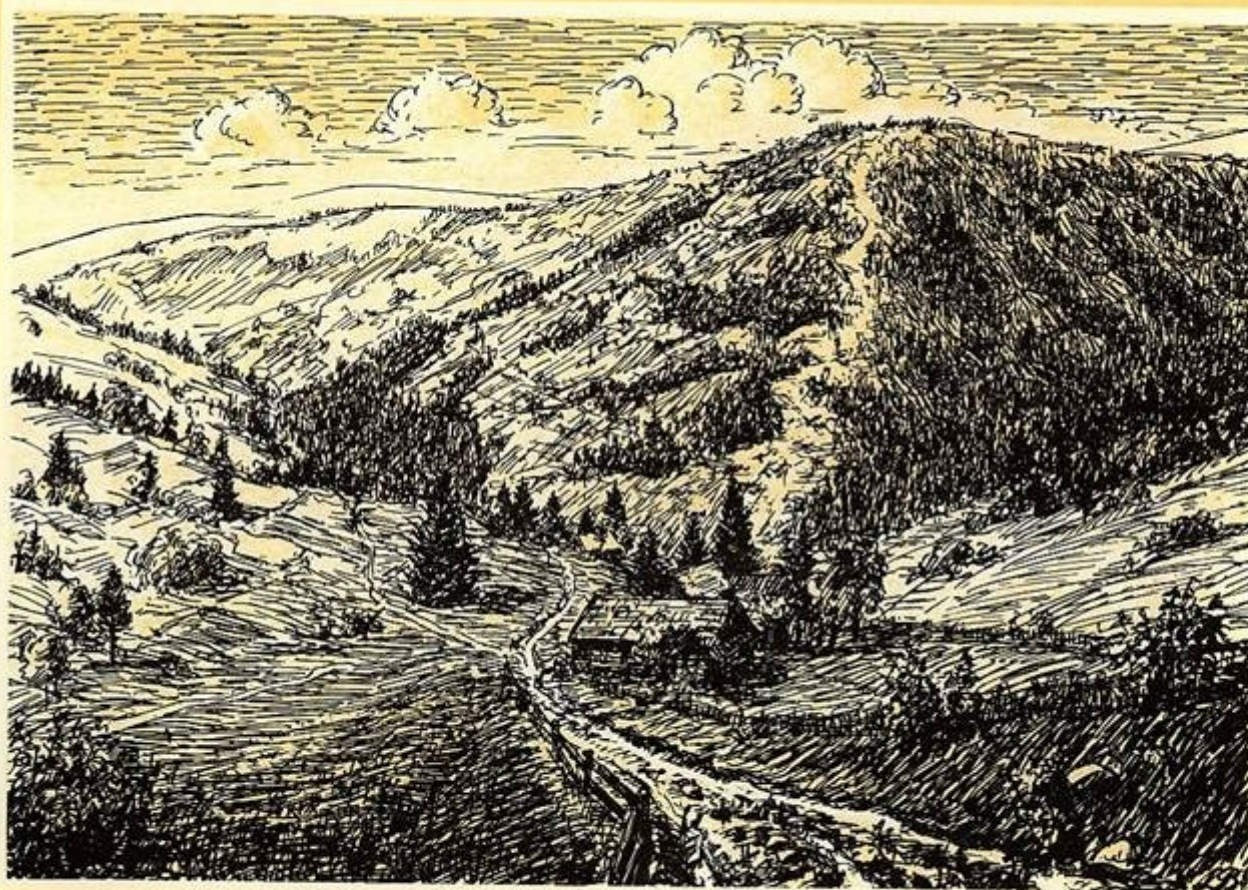
⑫ Svah vypuklý (se sklonem od shora přibývajícím)



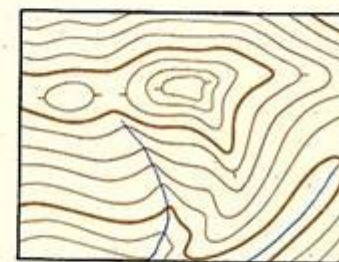
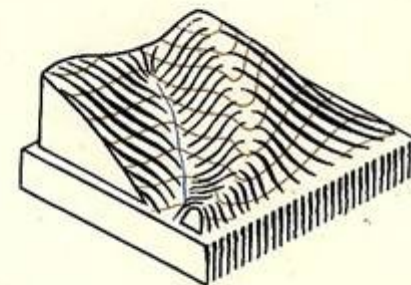
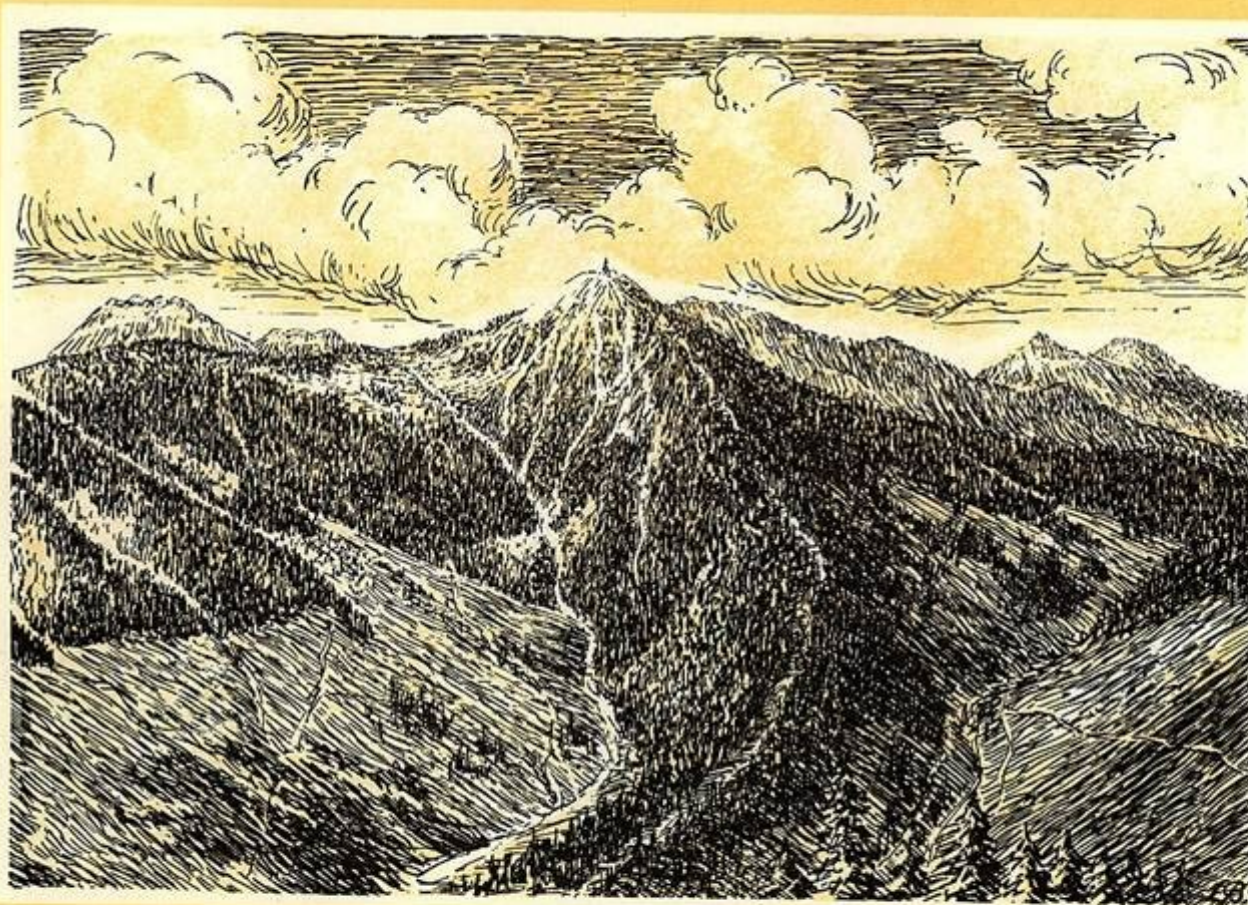
⑬ Svah dutý (se sklonem od shora ubývajícím)



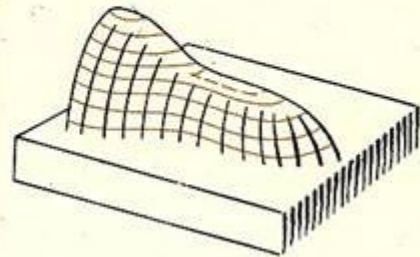
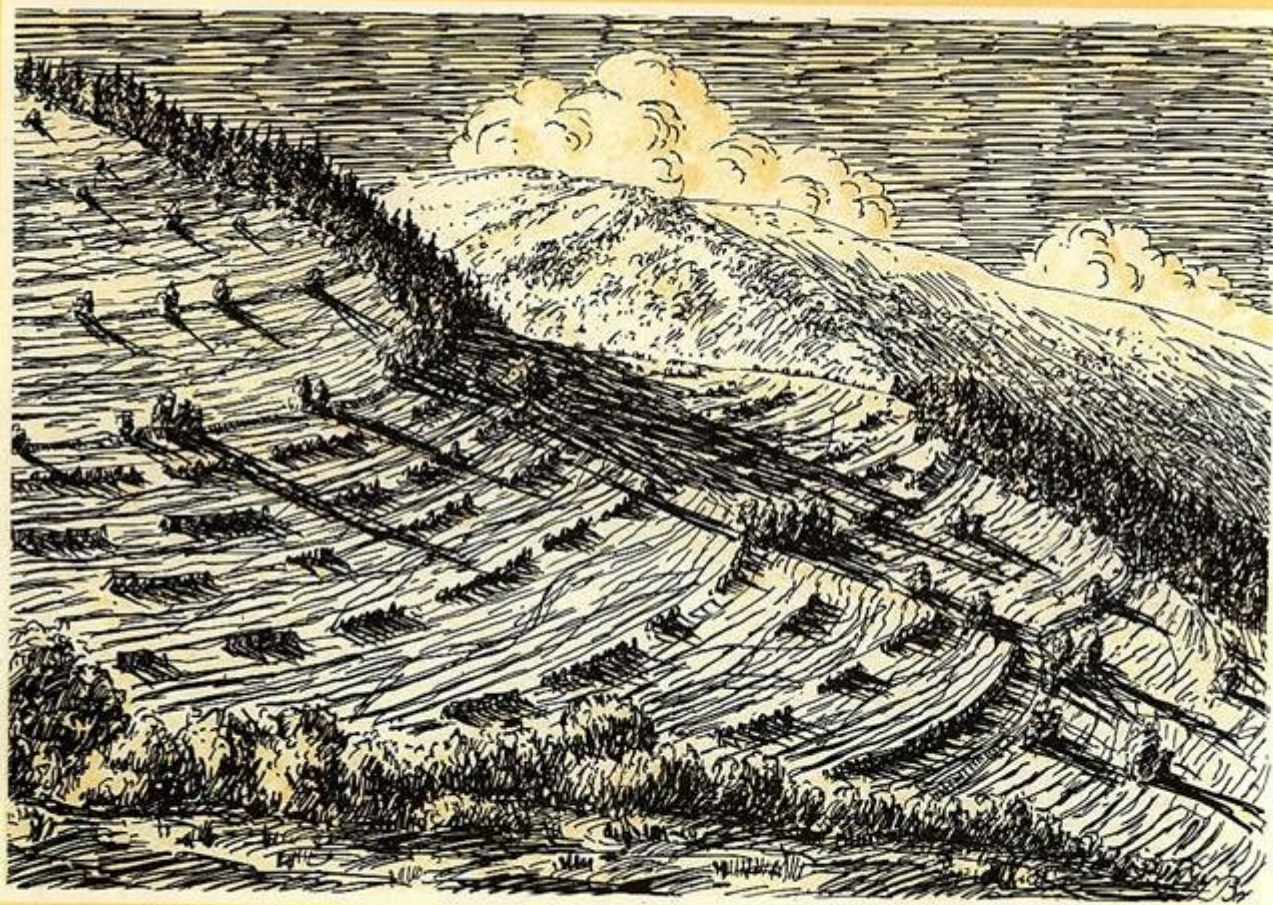
14 Sráz a skalní stěna



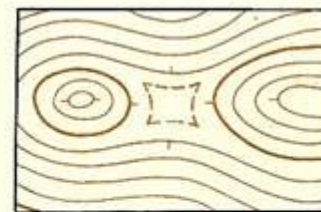
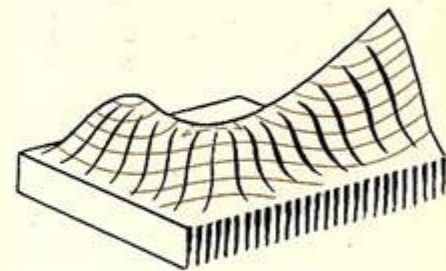
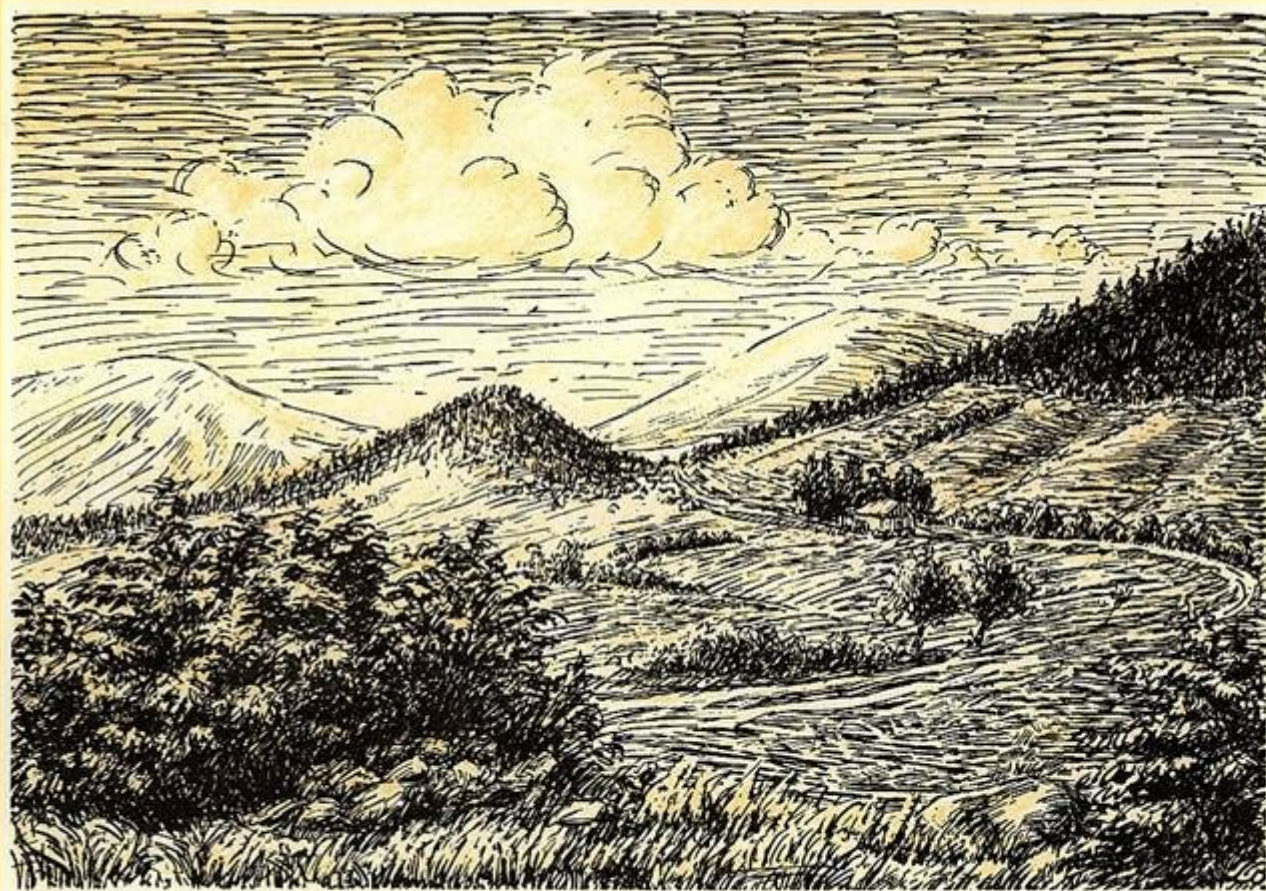
⑮ Svahový hřbet široký



①⑥ Svahový hřbet úzký

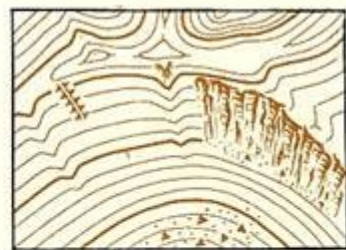
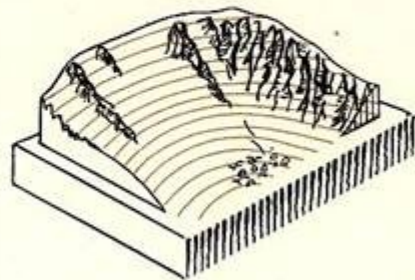
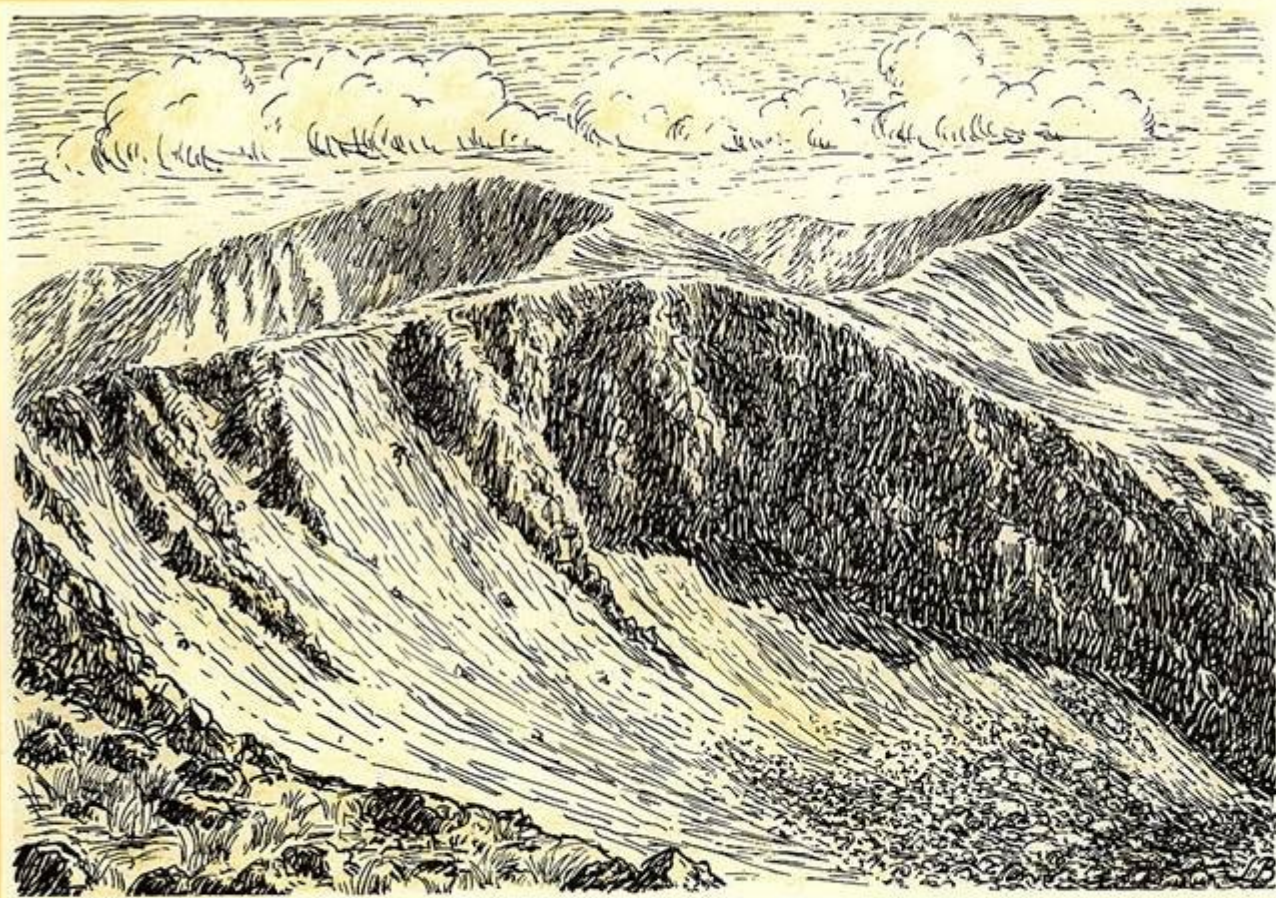


17 Spočinek

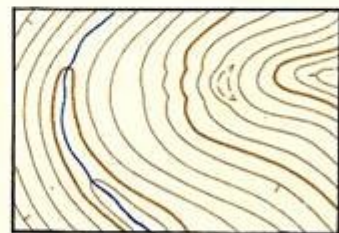
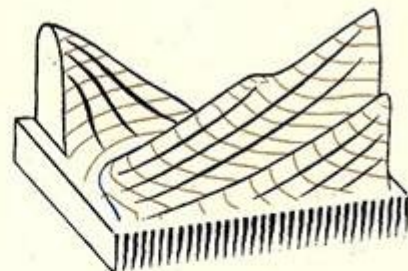


18 Svahová kupa

0,5

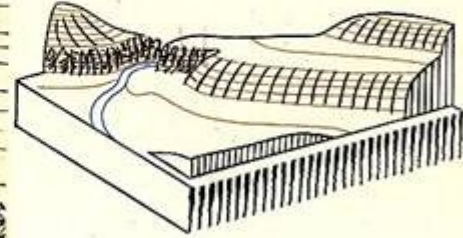
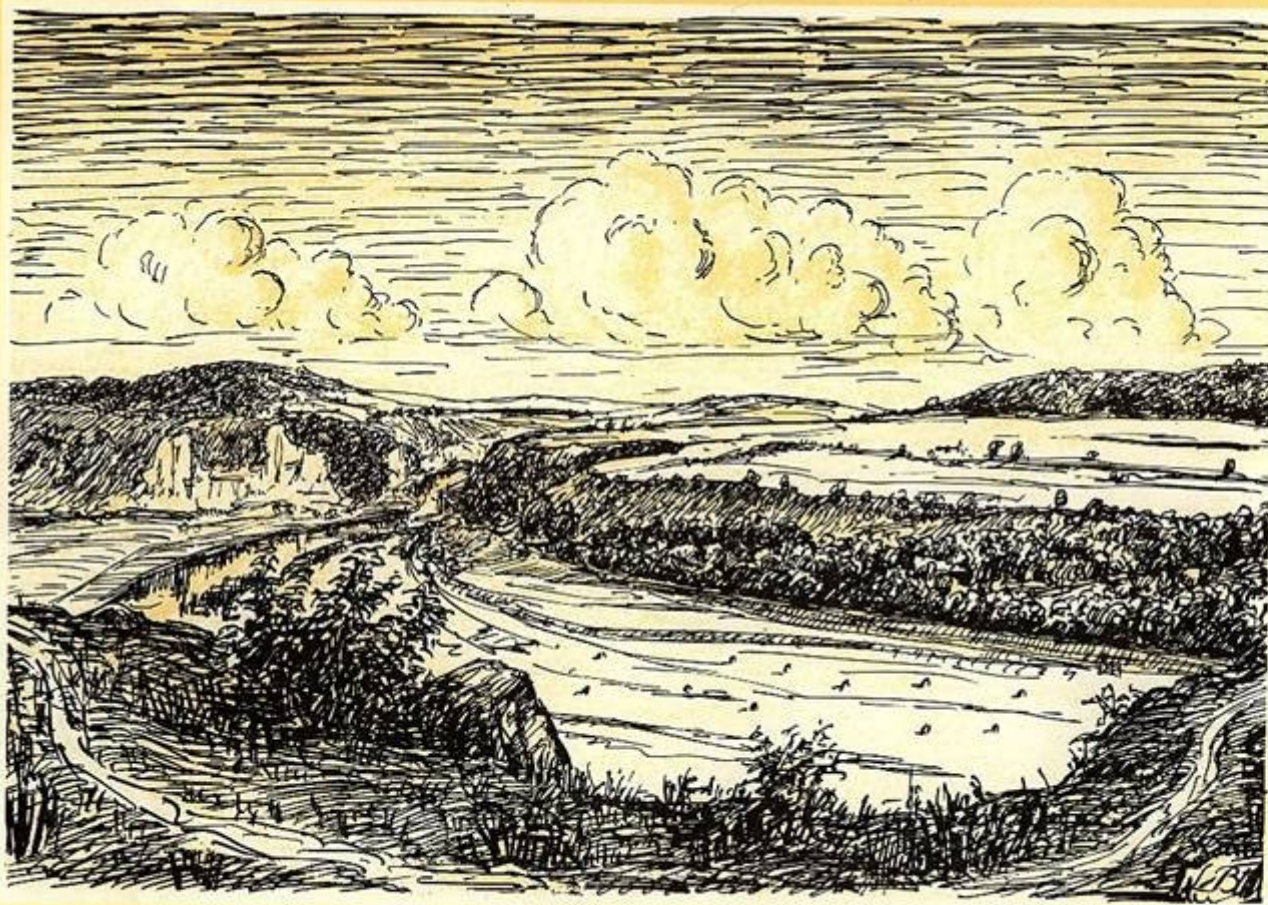


19 Žebro

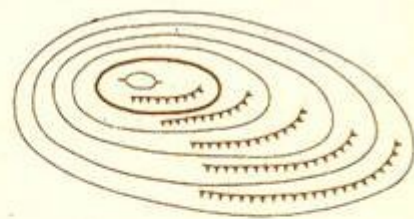
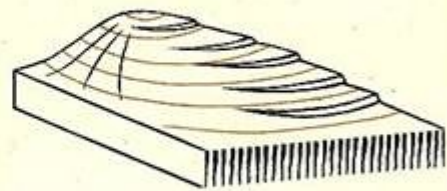
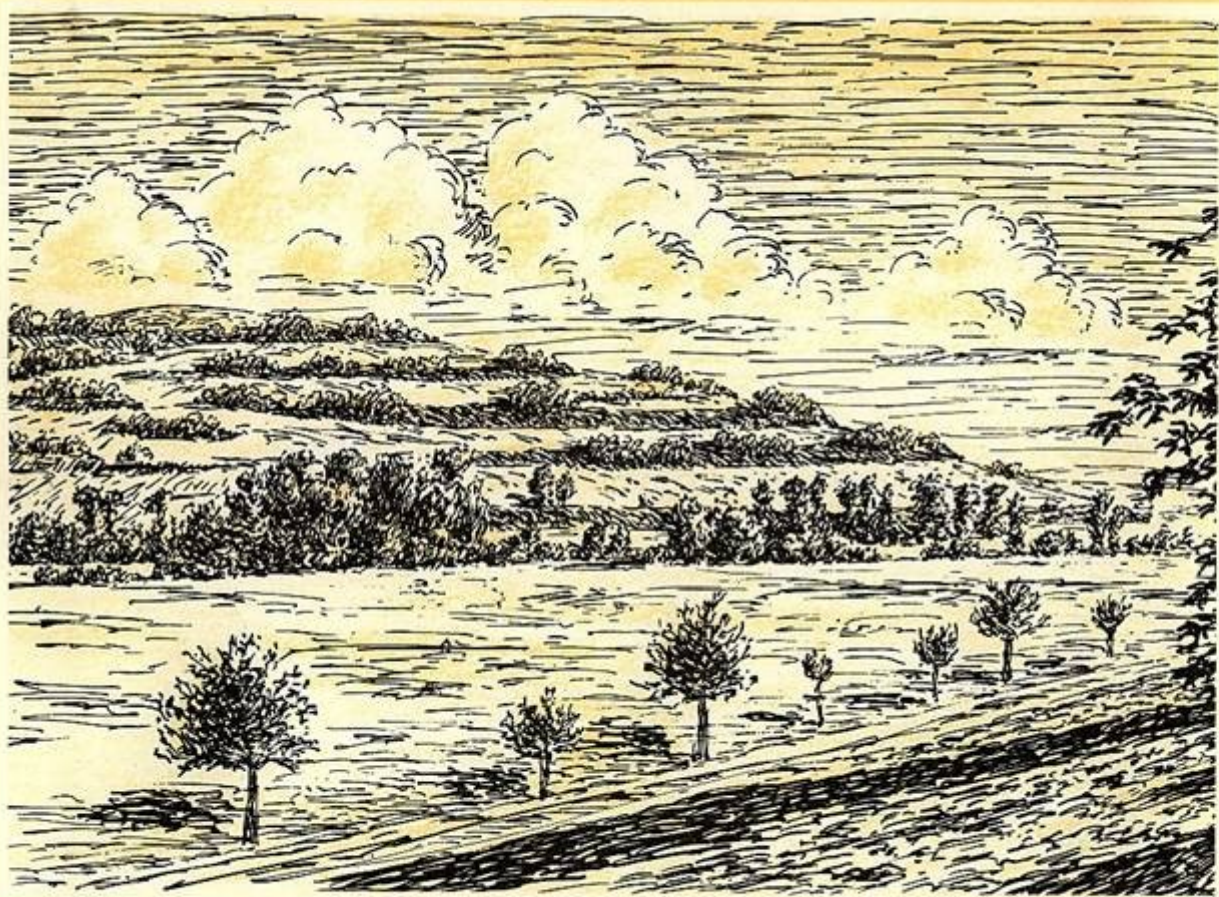


20 Výčnělek

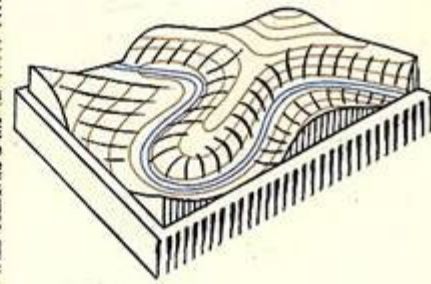
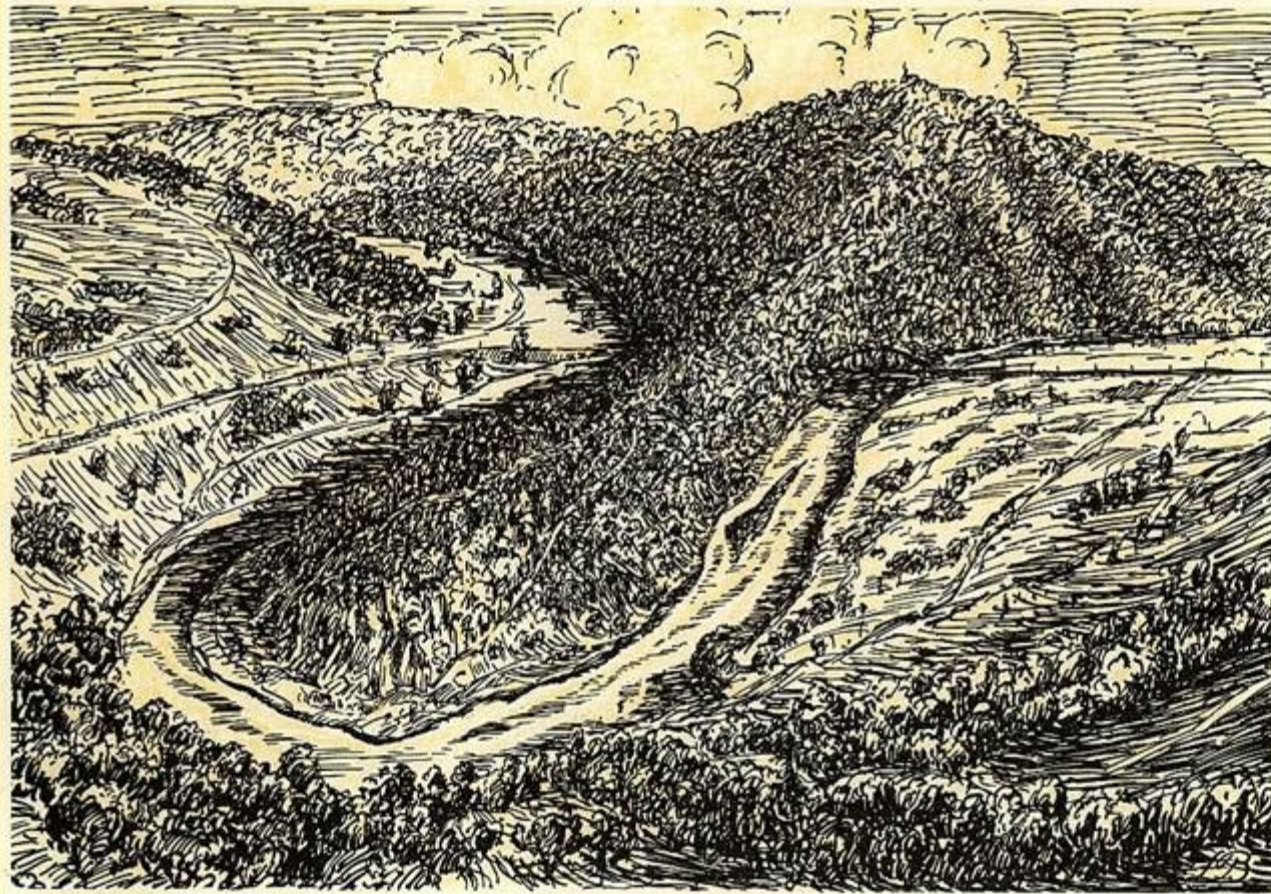
6,5



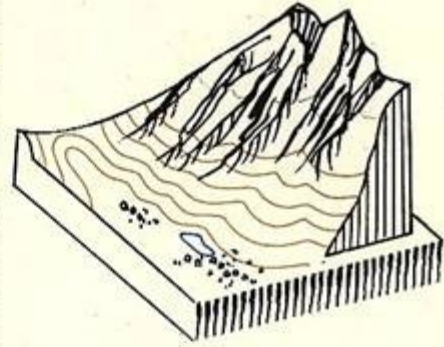
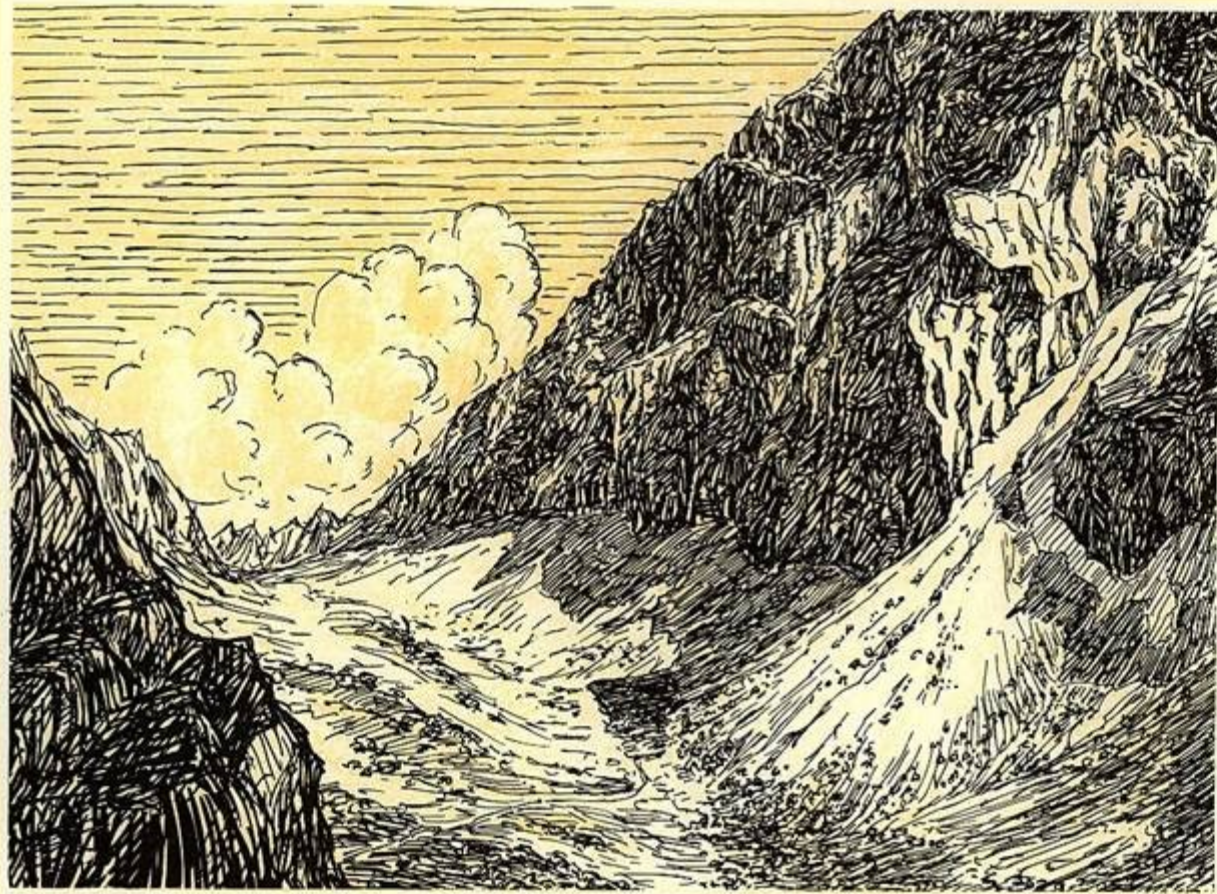
21 Terasa



22 Terenní stupeň

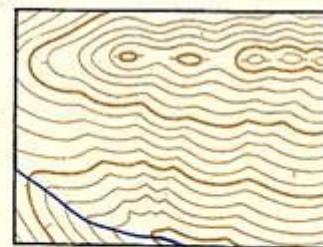
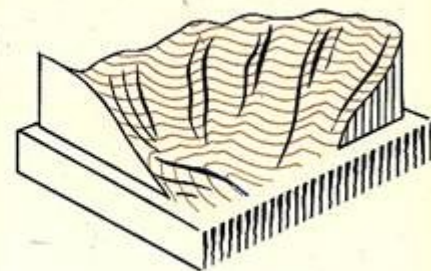
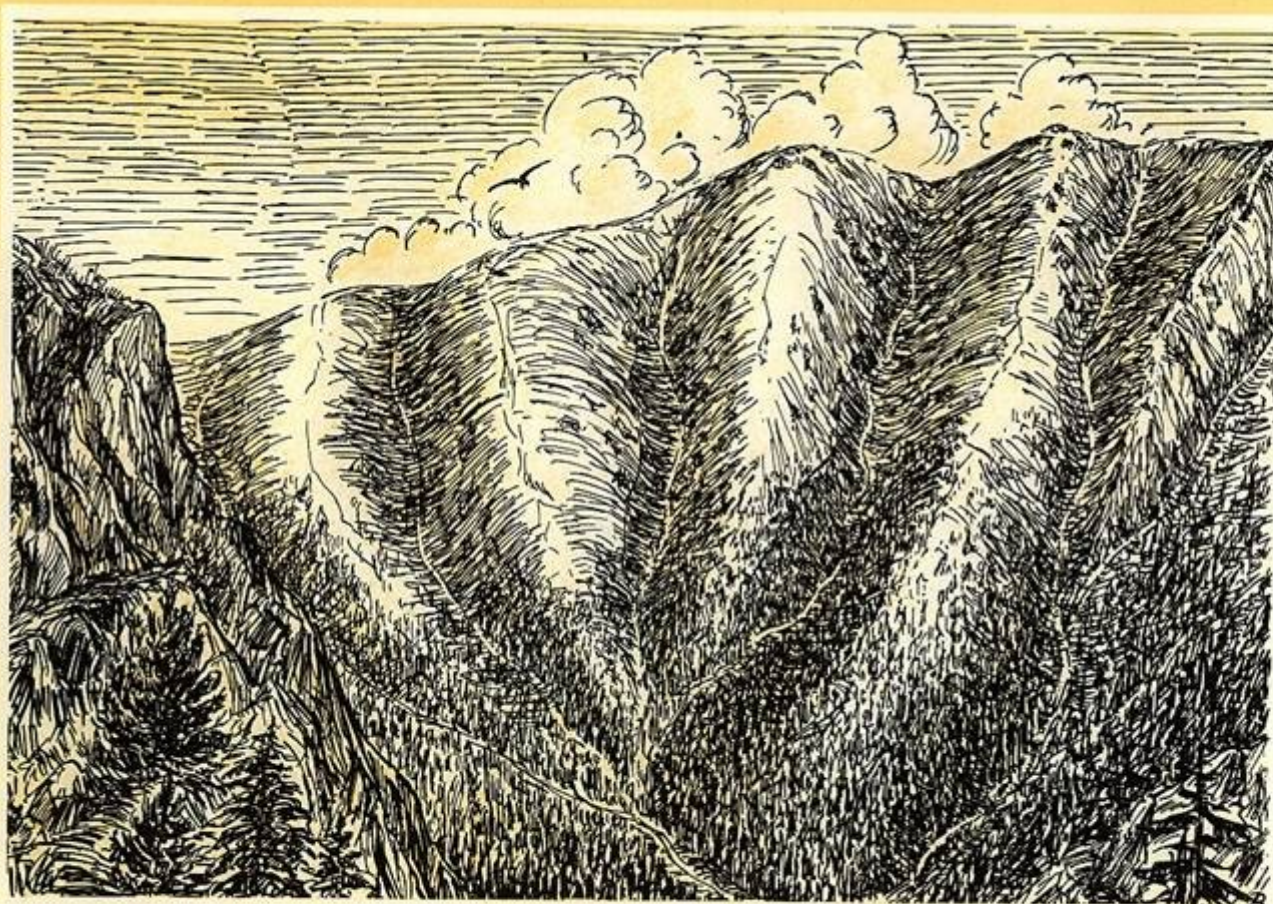


23 Ostroh

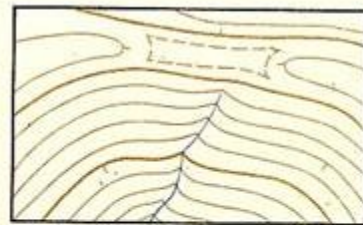
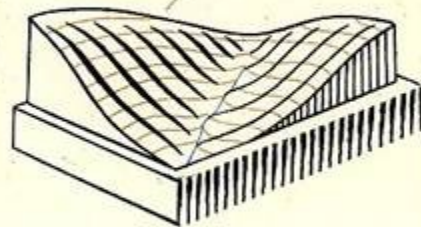
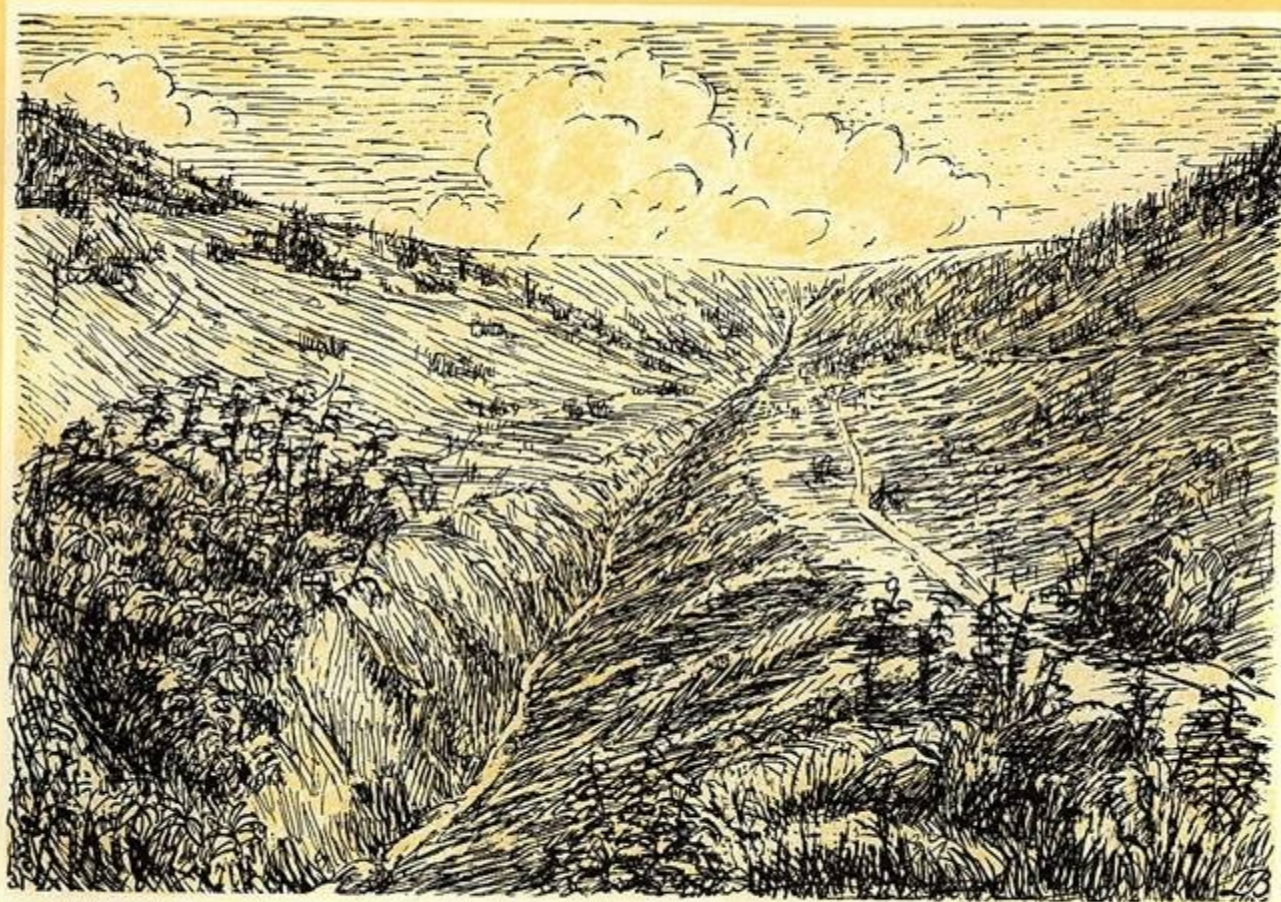


24 Sufový kužel

6.25

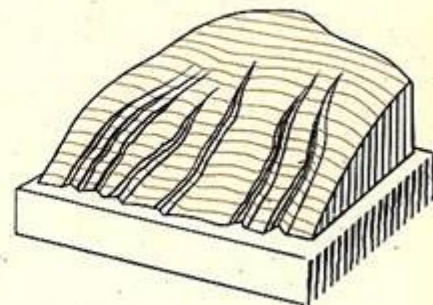
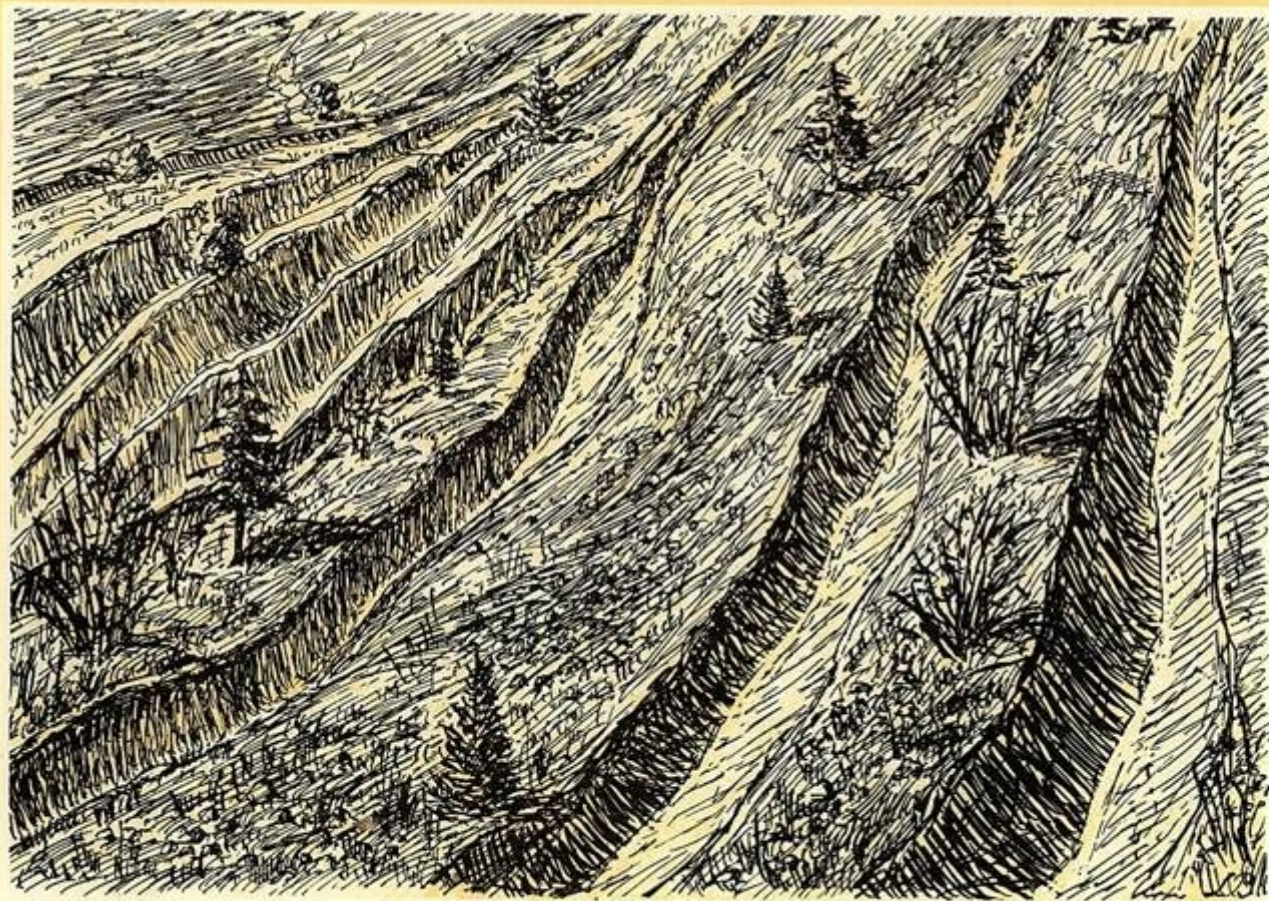


25 Úžlabí

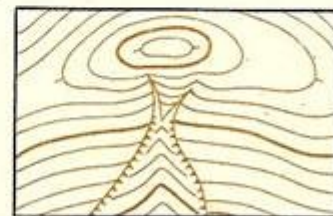
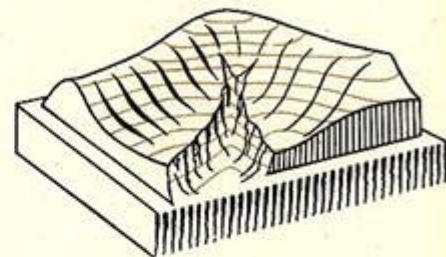
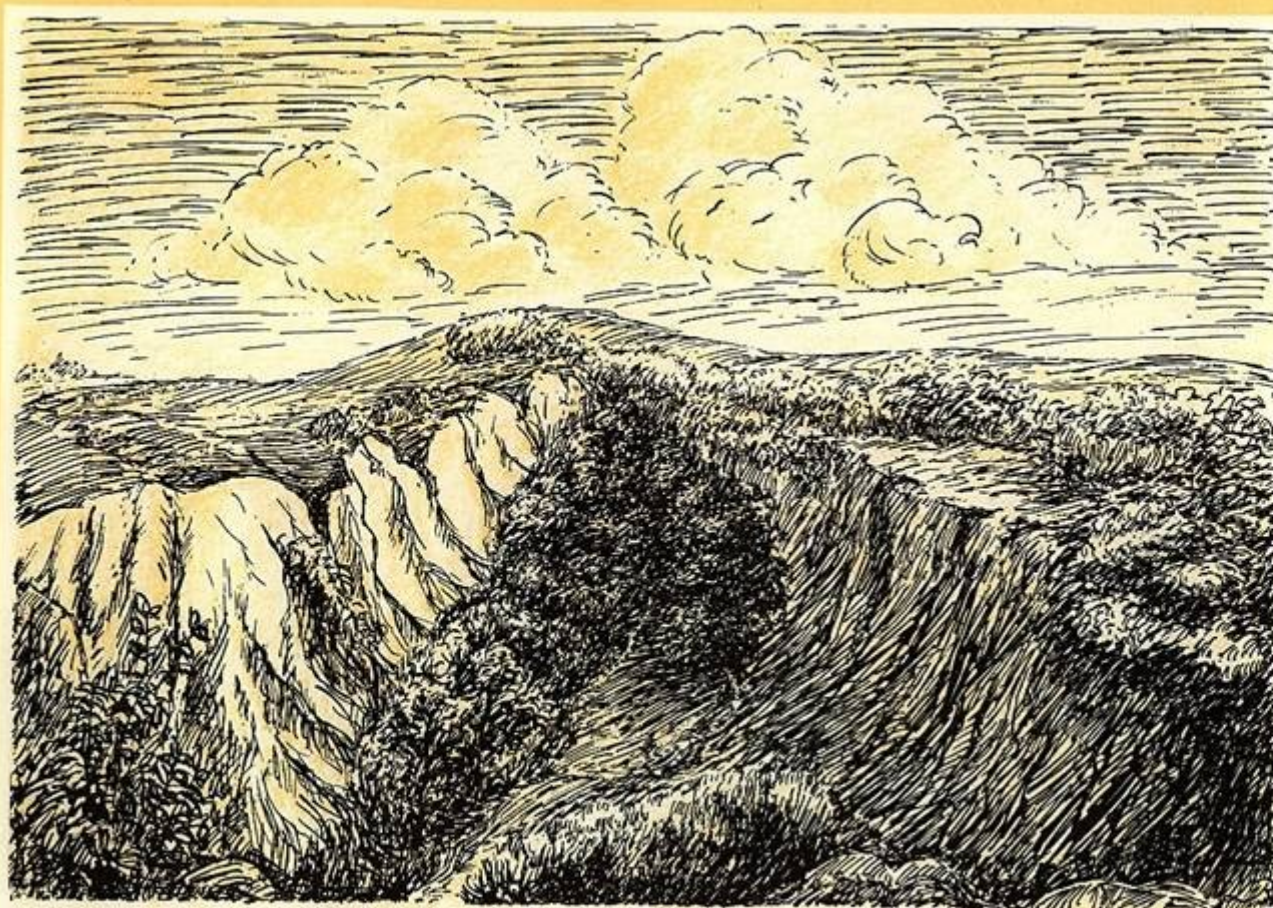


26 Zářez

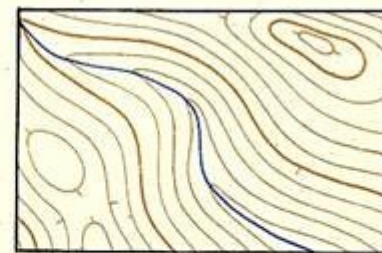
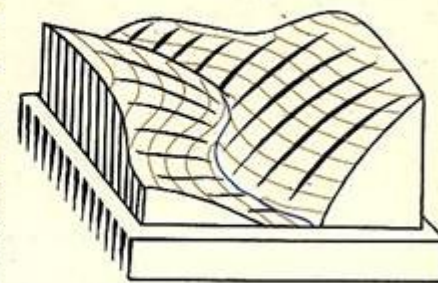
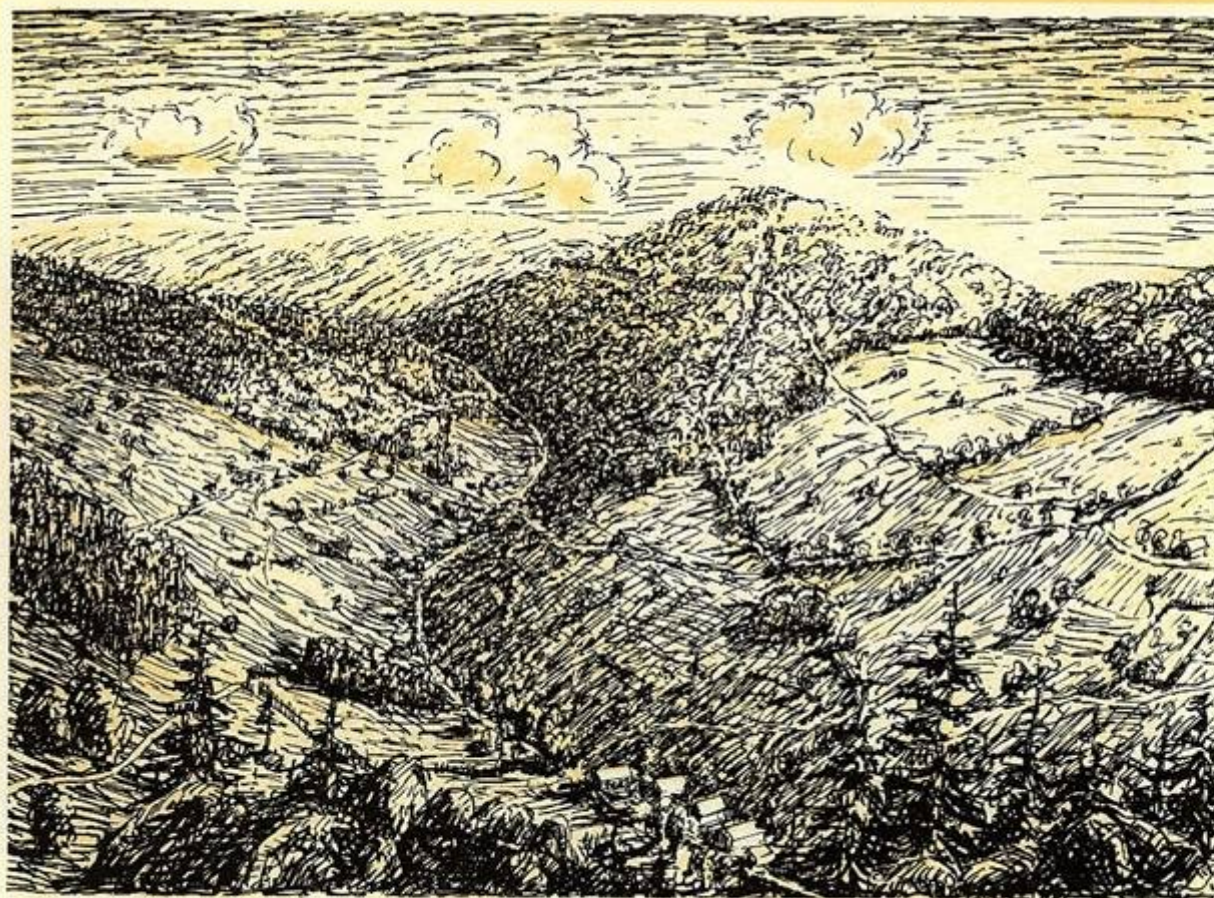
0,05



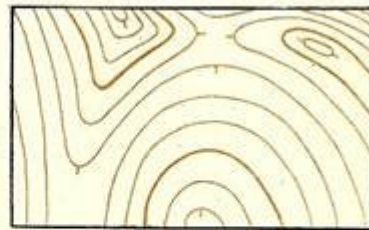
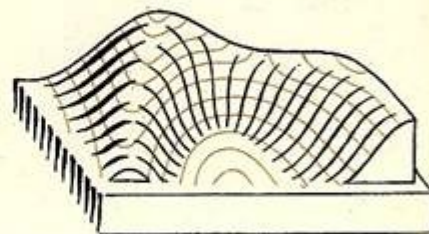
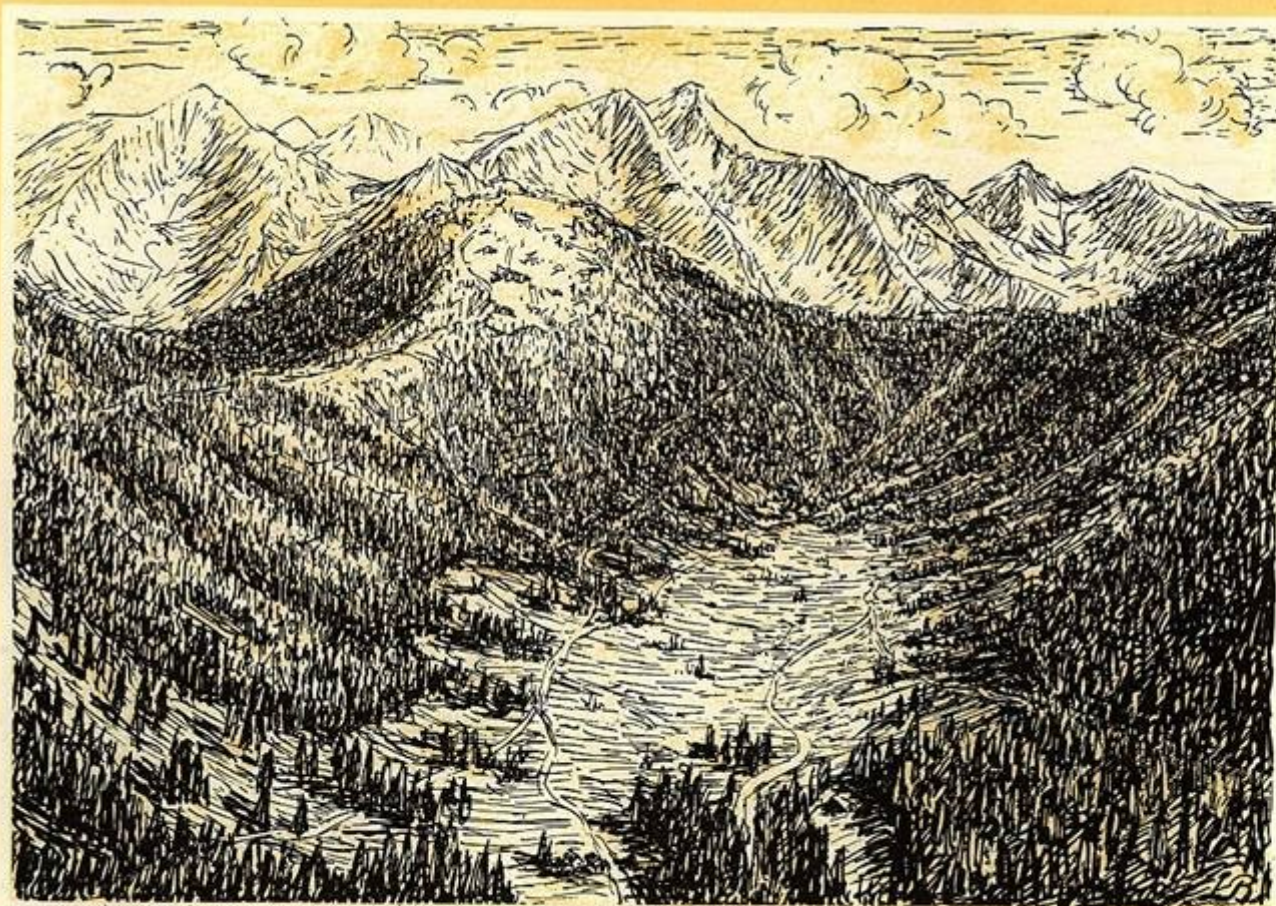
27 Rýha



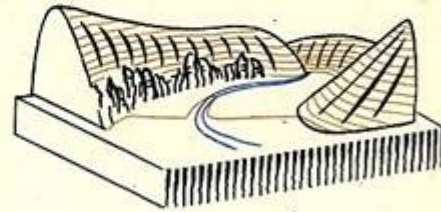
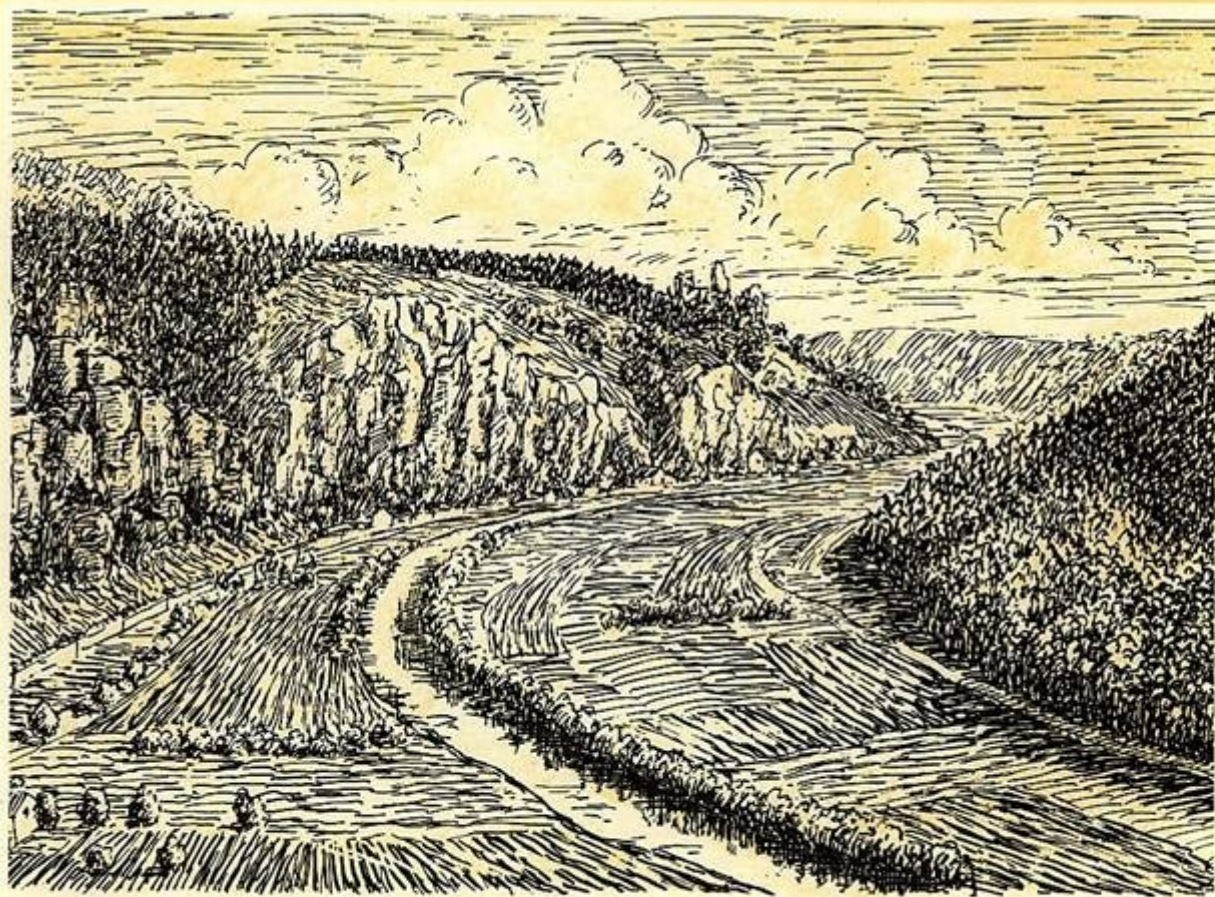
28 Rokle



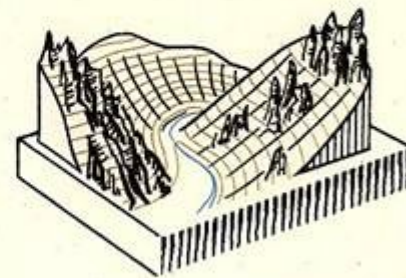
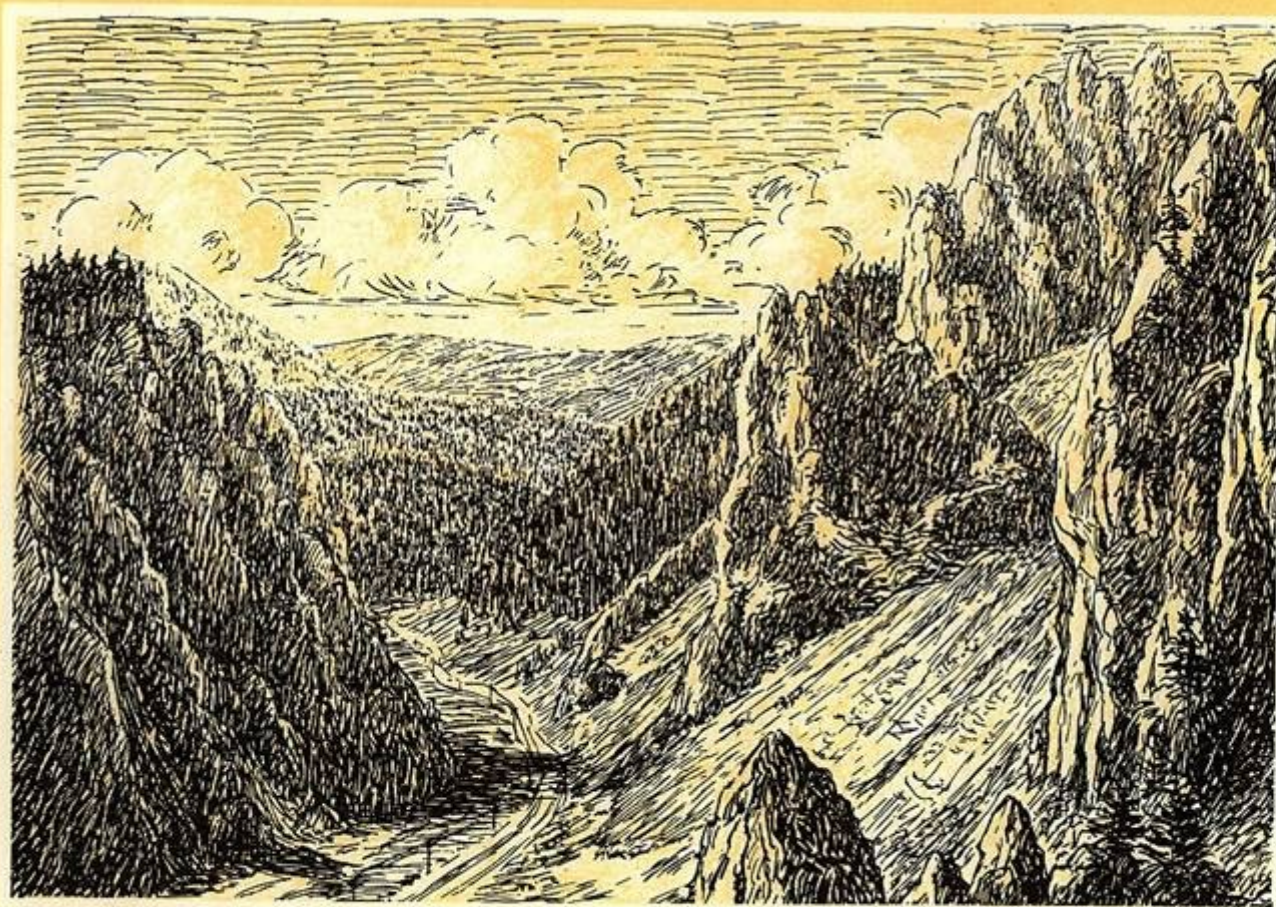
29 Údolní zářez



30 Úžlabina



31 Údolí s rovným dnem



32 Soutěska

9-0,35

Doporučený link

<https://geography.upol.cz/soubory/studium/e-ucebnice/Smolova-2010/projekt.html>