



*Every man is in certain respects (a) like all other men,
(b) like some other men, (c) like no other man.*

(Kluckhohn & Murray, 1961, p. 53)



- ▶ *Co to je osobnostní rys? (definice)*
- ▶ *Jak identifikovat důležité rysy?*
- ▶ *Které to jsou? (ideálně kompletní seznam)*
- ▶ *(Jak zjistit kdo má jakou úroveň rysu)*

Rys

Důraz

- ▷ Interní charakteristika, ovlivňuje chování
- ▷ Deskripce převládajícího chování

Identifikace rysů

- ▷ Lexikální přístup
- ▷ Statistický přístup
- ▷ Teoretický přístup

H. J. Eysenck



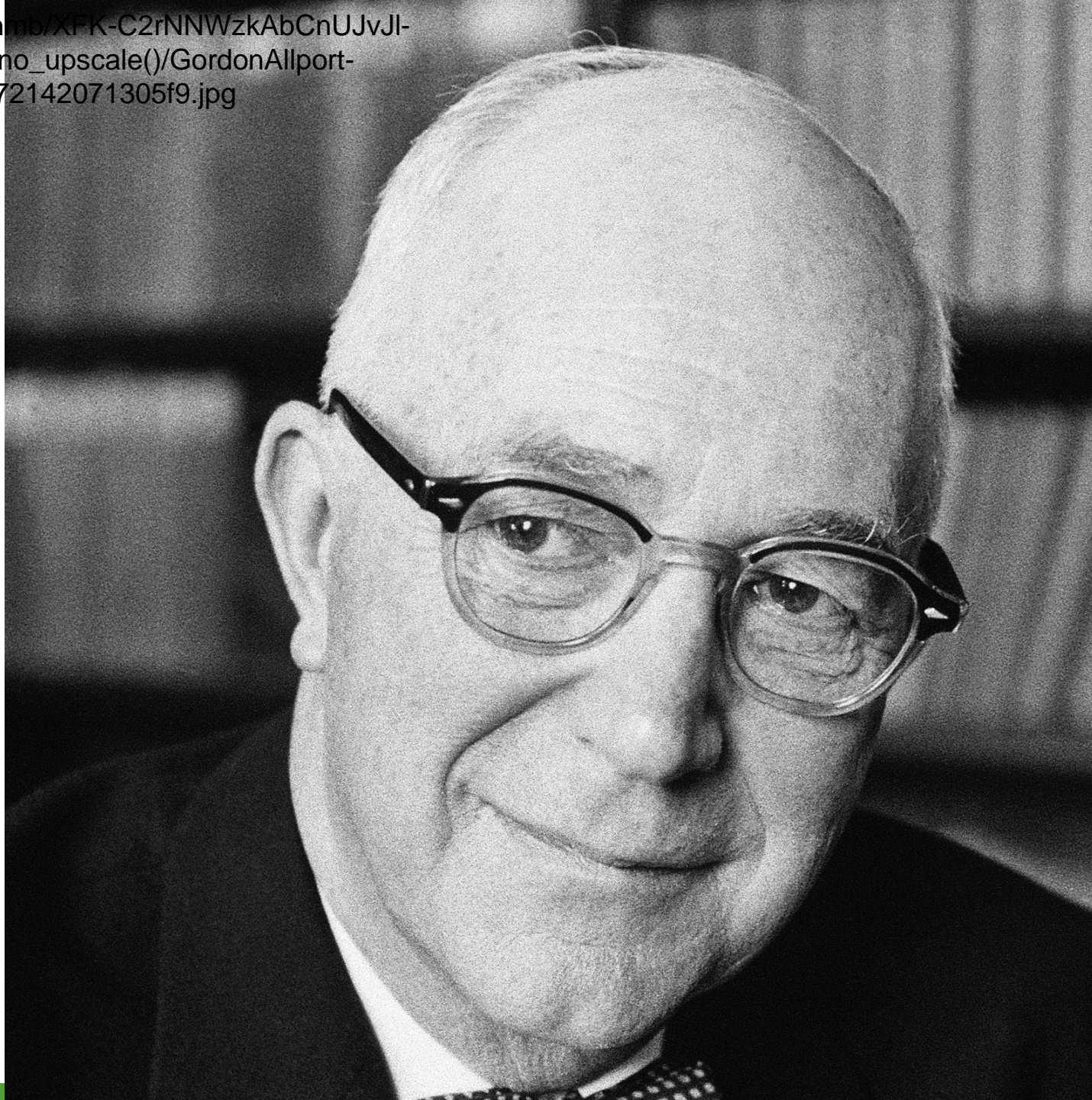
[https://www.thoughtco.com/thmb/IUhiqy24NIUncETwJsIRI8bjCZQ=/900x675/smart/filters:no_upscale\(\)/HansEysenck-5a3b45538dff42d5ae2e7363a9598aba.jpg](https://www.thoughtco.com/thmb/IUhiqy24NIUncETwJsIRI8bjCZQ=/900x675/smart/filters:no_upscale()/HansEysenck-5a3b45538dff42d5ae2e7363a9598aba.jpg)

Eysenck

- ▶ Super-rysy (typy osobnosti)
- ▶ Risy osobnosti
- ▶ Návykové reakce
- ▶ Specifické reakce
- ▶ Extraverze – introverze
- ▶ Neuroticismus
- ▶ Psychoticismus

Biologicky základ

[https://www.verywellmind.com/thumb/XFK-C2rNNWzkAbCnUJvJl-ICwvg=/1602x1602/smart/filters:no_upscale\(\)/GordonAllport-cropped-f25cb0e839c24e44ad272142071305f9.jpg](https://www.verywellmind.com/thumb/XFK-C2rNNWzkAbCnUJvJl-ICwvg=/1602x1602/smart/filters:no_upscale()/GordonAllport-cropped-f25cb0e839c24e44ad272142071305f9.jpg)



Robert McCrae



https://lh3.googleusercontent.com/proxy/BGIQjLosgCyD4GEFmtMfVai7-Wjul1tmRyBS9x_cuqT_sEbF2Mn2c9HN26JA403HzKN7Ufu6t23K28d8c_fPBxWL4nhe-O1UHkGPmClrTH8sfTqShDdBqSRXZtqnUom4OaBEAS3Zc2Zw35-qd2Y

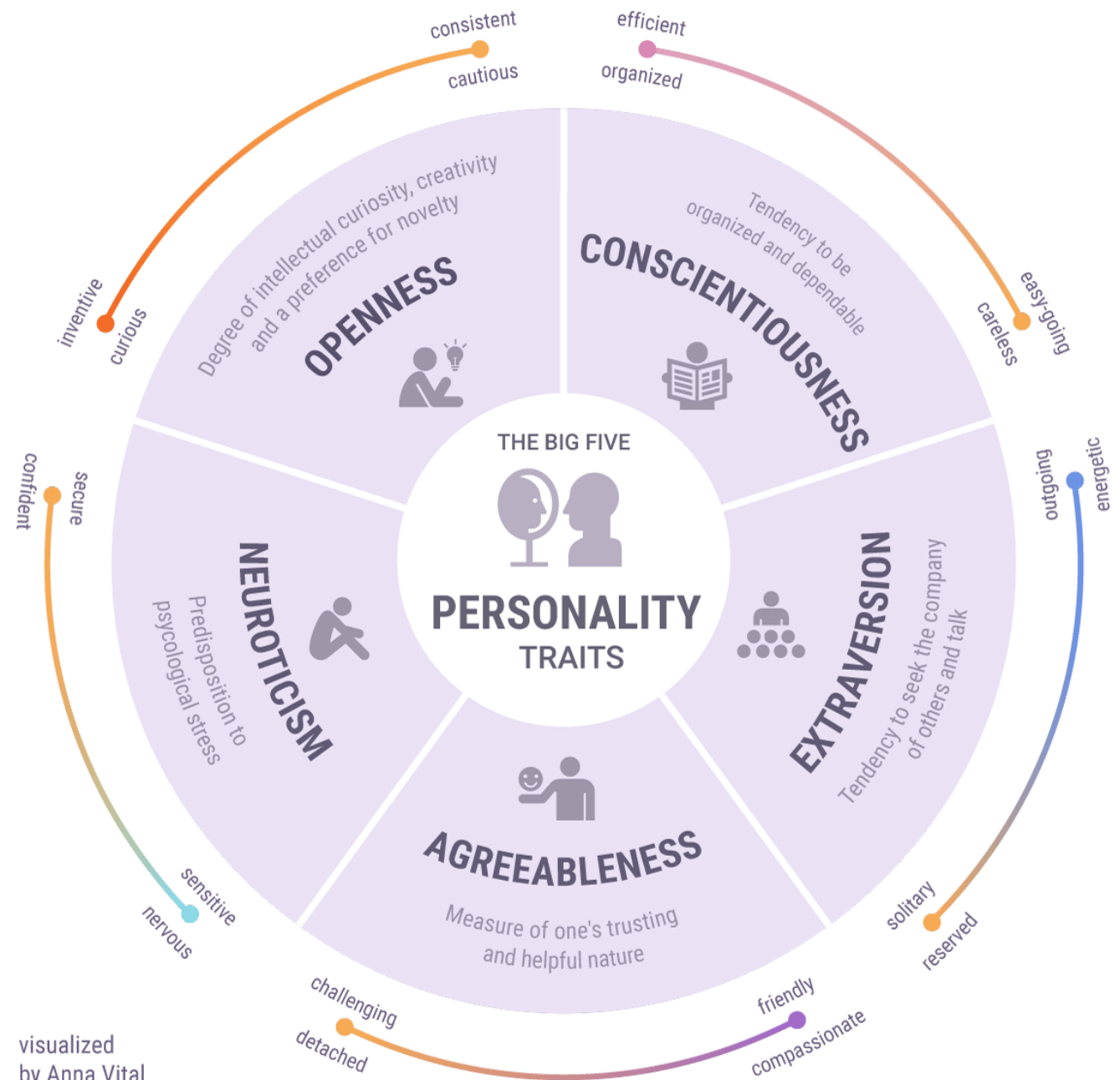
Paul T. Costa



<https://assets.jhsph.edu/faculty/profile/230/1125.jpg>

Big 5

- ▷ Otevřenost vůči zkušenosti
- ▷ Svědomitost
- ▷ Extraverze
- ▷ Přívětivost
- ▷ Neuroticismus



visualized by Anna Vital

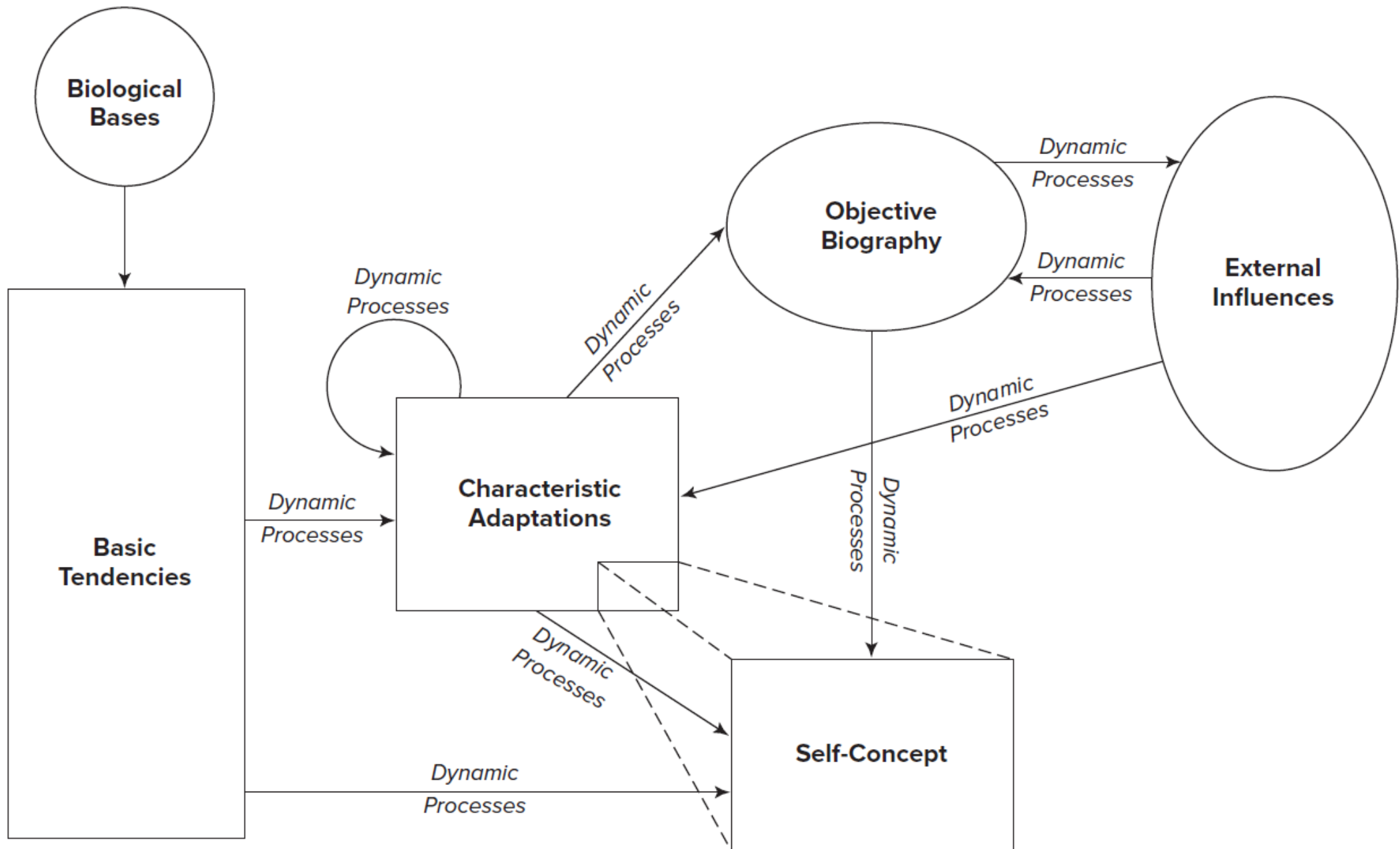
Source: J. M. Digman
Personality Structure: Emergence of the Five-Factor Model

Big 5

- ▶ Otevřenost vůči zkušenosti
- ▶ Svědomitost
- ▶ Extraverze
- ▶ Přívětivost
- ▶ Neuroticismus

Costa and McCrae's Five-Factor Model of Personality

	High Scores	Low Scores
Extraversion	affectionate joiner talkative fun loving active passionate	reserved loner quiet sober passive unfeeling
Neuroticism	anxious temperamental self-pitying self-conscious emotional vulnerable	calm even-tempered self-satisfied comfortable unemotional hardy
Openness	imaginative creative original prefers variety curious liberal	down-to-earth uncreative conventional prefers routine uncurious conservative
Agreeableness	softhearted trusting generous acquiescent lenient good-natured	ruthless suspicious stingy antagonistic critical irritable
Conscientiousness	conscientious hardworking well-organized punctual ambitious persevering	negligent lazy disorganized late aimless quitting



HEXACO

- ▷ Humility-Honesty (H)
- ▷ Emotionality (E)
- ▷ Extraversion (X)
- ▷ Agreeableness (A)
- ▷ Conscientiousness (C)
- ▷ Openness to Experience (O)