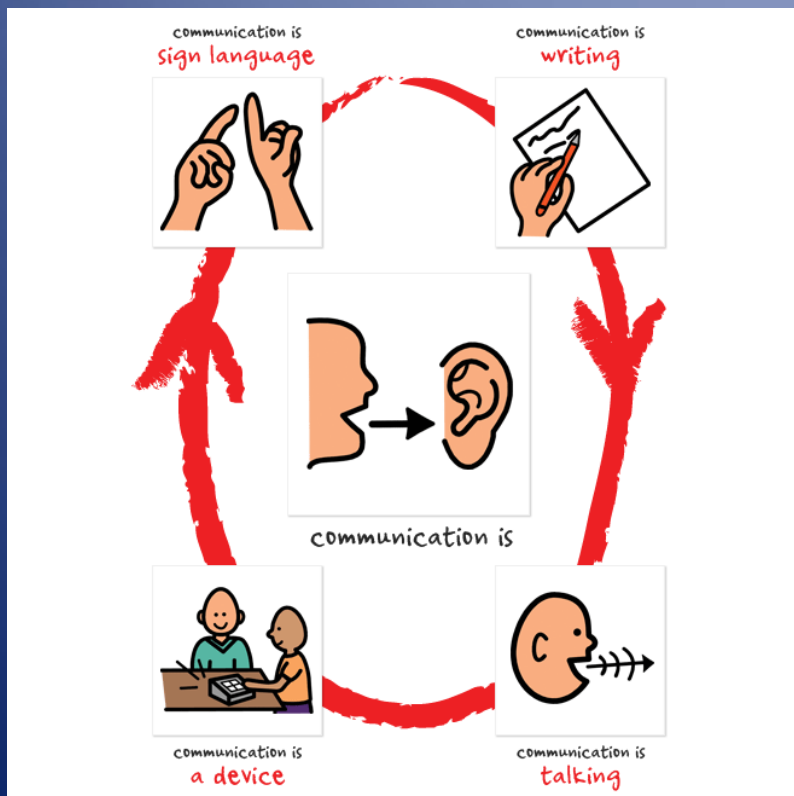


# Deaf Education, Cultural Aspects of Hearing and Communication: Czech Republic



Radka Horáková

Masaryk University , Brno

Faculty of Education

Department of Special Education

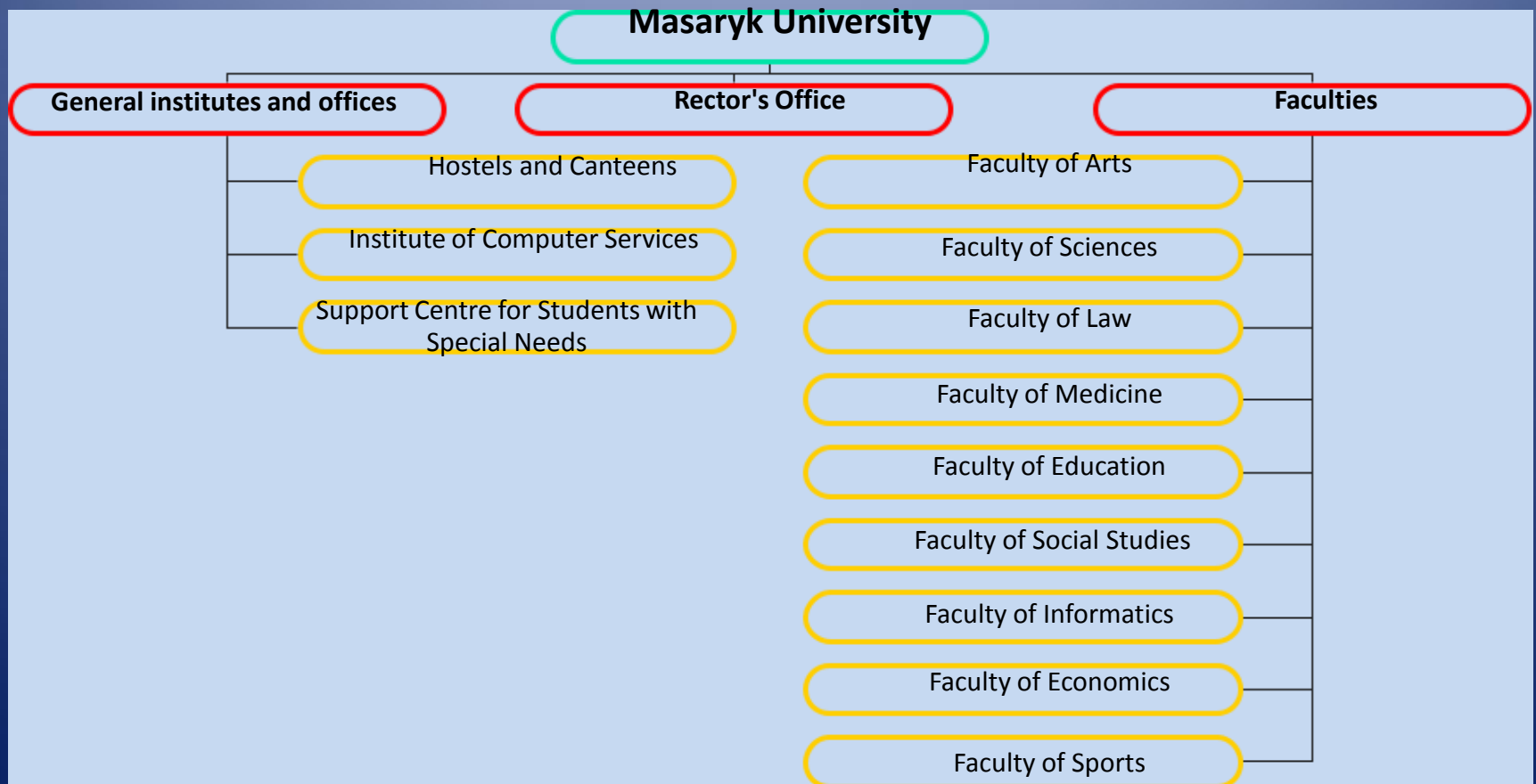
Email: [horakova.radka@gmail.com](mailto:horakova.radka@gmail.com)

# Masaryk University in Brno

- Founded: 1919
- Staff: 4700
- Faculties: 9
- Students: 42000



# Organization chart of Masaryk University and its disability services



## Faculty of Education – Department of Special Education

- The Department of Special Education was founded on 1st Sept. **1994**.
- The main aim of the department is to prepare future teachers with regard to current trends. It reflex the current focus on integration of **children with special needs and learning difficulties** in to mainstream schools and institutions.





# Faculty of Education – Department of Special Education

Students can graduate with  
Bachelor or Master Degrees in  
Special Education:

- Education of individuals with visual impairment
- Education of individuals with physical disabilities
- Education of individuals with mental retardation
- **Deaf Education**
- Learning disabilities and behavioral disorders
- **Speech Pathology**



# Support Centre for Students with Special Needs

The mission of the Centre is to grant accessibility to students with sensory and other disabilities to all study programs and subjects accredited at the Masaryk University in Brno.

A yellow rectangular button with a black border. Inside the button, there is a black rectangular area containing Braille characters and the word "Teiresiás" in a white, monospaced font.

⠠⠠⠠ Teiresiás

## Support Centre for Students with Special Needs

Central Office

Study Section

Lifelong Learning  
Section

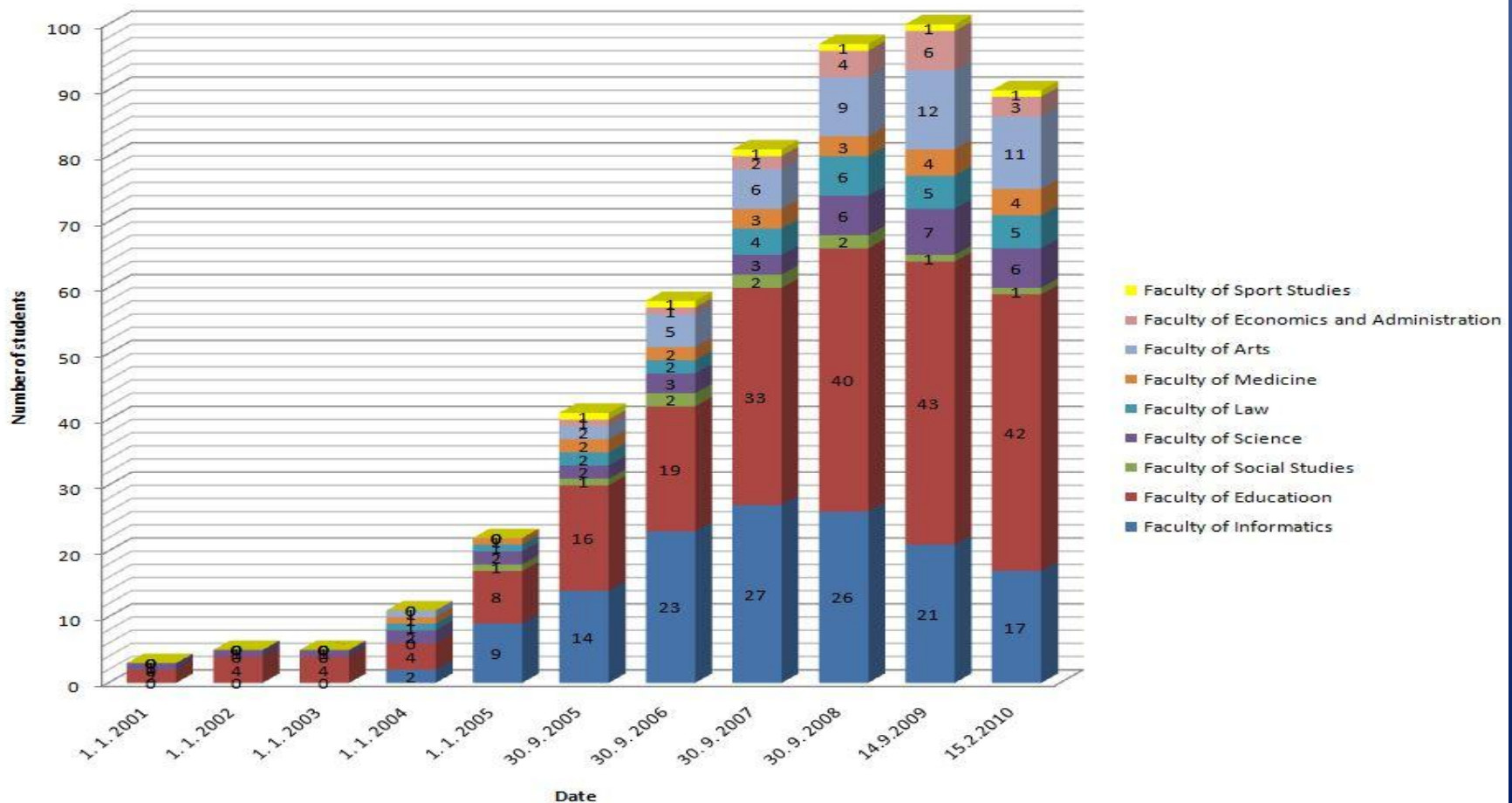
Special IT Section

Library and Publishing  
Section

Sign Language Section

Mobility Impaired  
Section

# Deaf students at the Masaryk University

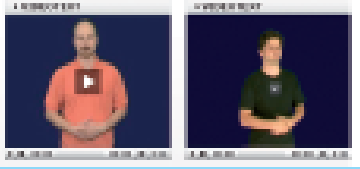




# Services for deaf students

- Methodical guidance for interpreters using special terminology in Czech sign language – math., IT, biology, special education, etc.




ID: CSL2004



Front view    Side view

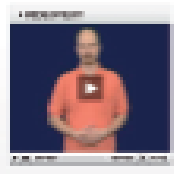
Formal description: substantive  
Transcription:

HamNoSys    SignWriting    Avatar



Semantic description:

**inf.** terminological proposal **MU1** [PP]



Czech translation: účinnost, efektivita, efektivnost [PP]

# Special terminology in Czech sign language

- Special terminology in Czech sign language – special education

Znaková zásoba Českého znakového jazyka  
Zkoušení Nápověda O programu Konec

**Obecné pojmy**

E	F	G	H	Ch
N	O	P	R	Ř
W	Z	ž	Číslo	

..  
abstrakce  
adaptace  
akcelerace  
aktivita  
alternativní vzdělávací program  
ambidextrie  
analýza  
anamnéza  
asimilace  
asistence  
autorita  
denní stacionář  
diagnostika  
diagnóza

diagnóza [Téma: Obecné pojmy]

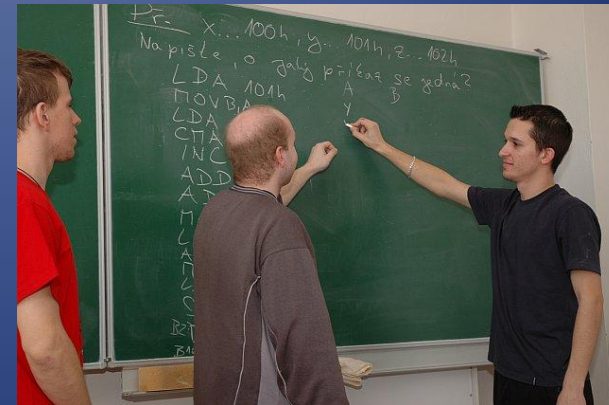
Čelní pohled Boční pohled Oba pohledy

Zpět Nejvyšší úroveň Rejstřík

Najít  
diagn\* Hledej

## Services for deaf students

- Czech sign language interpreting, signing exact Czech interpreting and note-taking services in seminars and lectures as well as in official communication within the University.
- Special tuition of various courses according to individual needs in Czech sign language and/or in Czech language via chat.



## Persons with hearing loss in CR

- There are around **10 million** citizens in Czech Republic.
- There are around **300,000** individuals with hearing loss in CR.
- A majority of these people are persons in whom the hearing impairment occurred in advanced age.
- There are around **7,000** deaf people (deaf/Deaf).



## The situation of children with HL in CR



We still face difficulties with late detection of children's hearing loss. We don't have **Universal Newborn Hearing Screening** in all hospitals.

# Hearing tests



- TEOAE or DPOAE
- Tympanometry
- ABR, NNABR
- ERA, CERA
- SSEP
- VRA
- Audiometry

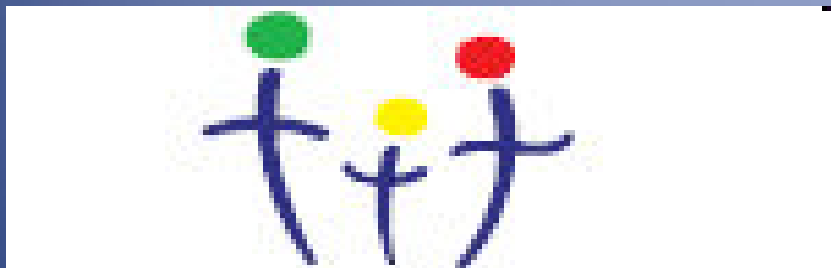


- The **audiologist/phoniater** receives training as the otolaryngologist in the first place...

# Early intervention



Despite the fact that - there is no comprehensive hearing testing of newborn babies in the CZ, there exists a **system of early intervention.**



## Centers of Early Intervention for Infants and Toddlers with HL:



- 1. Centers are generally established in schools for children with HL - **13**
- 2. Non-profit organization - **2**



# The schools for deaf

- There are **13** schools for students with HL in CR.



# Cochlear implants



- There are **2** centers for cochlear implantation for children and adults – Prague, Brno
- The number of deaf children with CI is growing, about **500**. There are around **180** deaf adults with CI.

# System of education

## Educational System in the USA

- Day Care Center ... from **6 weeks....**
- Preschool **4–6**
- Elementary school **6–11**
- Middle school **11–14**
- High school **14–18**
- College or University **18–23.....**

## Educational System in the CZ

- Maternity leave...
- Preschool **3–6**
- Elementary/Middle School **6–14**
- High School **14–18**
- University **18 –.....**

# The schools for deaf

- Students with HL can be mainstreamed or attend the special schools for deaf.
- Day-school or residential schools for deaf consist of preschool, elementary school, and 6 of them consist of high school as well.
- Methods in deaf education:
  - 2 schools – bilingual access
  - 1 school – oral method
  - rest – total communication



# The elementary schools for deaf

- For 10 years.
- Deaf and hearing teachers, or deaf assistants working together with hearing teachers.
- Once a year there is a big sports competition for all schools.



# The high schools

- Historically there were very few possibilities for deaf students – usually only the crafts.
- Presently the deaf student can also graduate with these certifications or degrees:
  - Grammar school (general studies), 4 years
    - Pre-school education,
    - Graphic designer,
    - Assistant of dental laboratory,
    - Information technology in economy,
  - Computer systems and Applied electrotechnics,
    - Hotel management and Travel industry

# The university education for deaf students

- Deaf people can study anything, but there is no guarantee that interpreters will be available.
- In Czech Republic there are two University programs special for Deaf students but also for hearing students too:
  1. Established in 1992 – Dramatic Art (in Brno)
  2. Established in 1998 – Deaf Studies (in Prague, with a major in the linguistics of sign language)



## Law for systems of communication for deaf and deafblind people

- Linguistic research of Czech sign language began in 1993.
- People with HL in CR have free-of-charge services of an interpreter for the purposes of a medical appointment, administration negotiations and for securing other needs based on the law No. 155/1998 and No. 384/2008 of systems of communication of deaf and deafblind people.



# Organizations of Sign Language Interpreters

There are 4 organizations of sign language interpreters in the Czech Republic:

1. The Organization of Sign Language Interpreters
2. The Czech Association of Sign Language Interpreters
3. The National Council of interpreters and sign language teachers
4. The Czech Chamber of Sign Language Interpreters

## Organizations of sign language interpreters

What are the main aims of organizations of sign language interpreters ?

- Enhancing the quality of professional interpreting for the deaf - historically there were very few possibilities for deaf to use a professional interpreting services (usually "**CODA**" - Children Of Deaf Adults).
- Education in the field of interpreting for the deaf.
- Supporting the interests of interpreters for the deaf.
- Creating learning programs for deaf children, for professionals and interpreters for the deaf.

## Organizations of sign language interpreters

- Interpreting at social and cultural events organised for the deaf

<http://www.youtube.com/watch?v=jFDCgnRJ9u0>





*deaf x Deaf*

## Deaf Culture

*„Speaking as a deaf person I believe that the most effective "cure" for deafness is not medicine, not mechanical or electronic devices nor the surgical blade, but understanding. And, ironically, understanding is free. Before we can develop understanding, however, we must create awareness.“*  
(awareness of Deaf culture)

Jack R. Gannon, 1979

(Shattering silence throughout the world. Presented at the Sixtieth Annual Convention of Quota International, July 16th, 1979, Philadelphia, Pennsylvania)

- **Spreadthesign.com** is an international dictionary of sign languages. This self-learning tool is free to use for all in the world.

<http://www.spreadthesign.com/gb/>

- **Quiet sign of love**

<http://www.youtube.com/watch?v=cT9CSuelX-E>



# Reference:

- <http://www.agbell.org/>
- <http://www.asha.org/>
- <http://www.batod.org.uk/>
- <http://www.raisingdeafkids.org/>

*Cole, E., Flexer, C. Children with Hearing Loss: Developing Listening and Talking, Birth to Six, Plural Publishing, 2010*

*Marschark, M., Spencer, P. E. The Oxford Handbook of Deaf Studies, Language, and Education, Volume 1 (Oxford Library of Psychology), Oxford University Press , 2011*

*Spencer, P. E. , Marschark, M.,Evidence-Based Practice in Educating Deaf and Hard-of-Hearing Students (Professional Perspectives on Deafness: Evidence and Applications), Oxford University Press, 2010*



for your attention.