

7.31
7.4
7.41
7.45
7.45
7.47
7.53
7.54
7.57
7.58
7.65
7.88

This chart isn't available in your version of Excel.

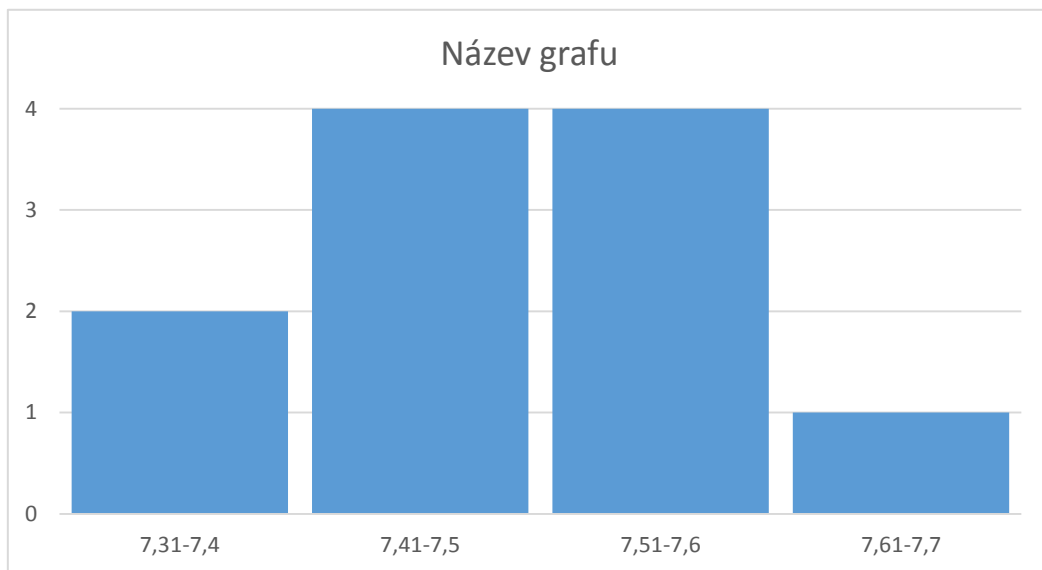
Editing this shape or saving this workbook into a different permanently break the chart.

so outlier is 7.88 and is henced removed.

t file format will

7.31		
7.4		
7.41		
7.45	7,31-7,4	2
7.45	7,41-7,5	4
7.47	7,51-7,6	4
7.53	7,61-7,7	1
7.54		
7.57		
7.58		
7.65		

N=	11	
mean	7.487273	
sd	0.097272	s.e.m
		L1
alpha	0.05	L2
T	2.228139	



0.029329

7.42

7.55