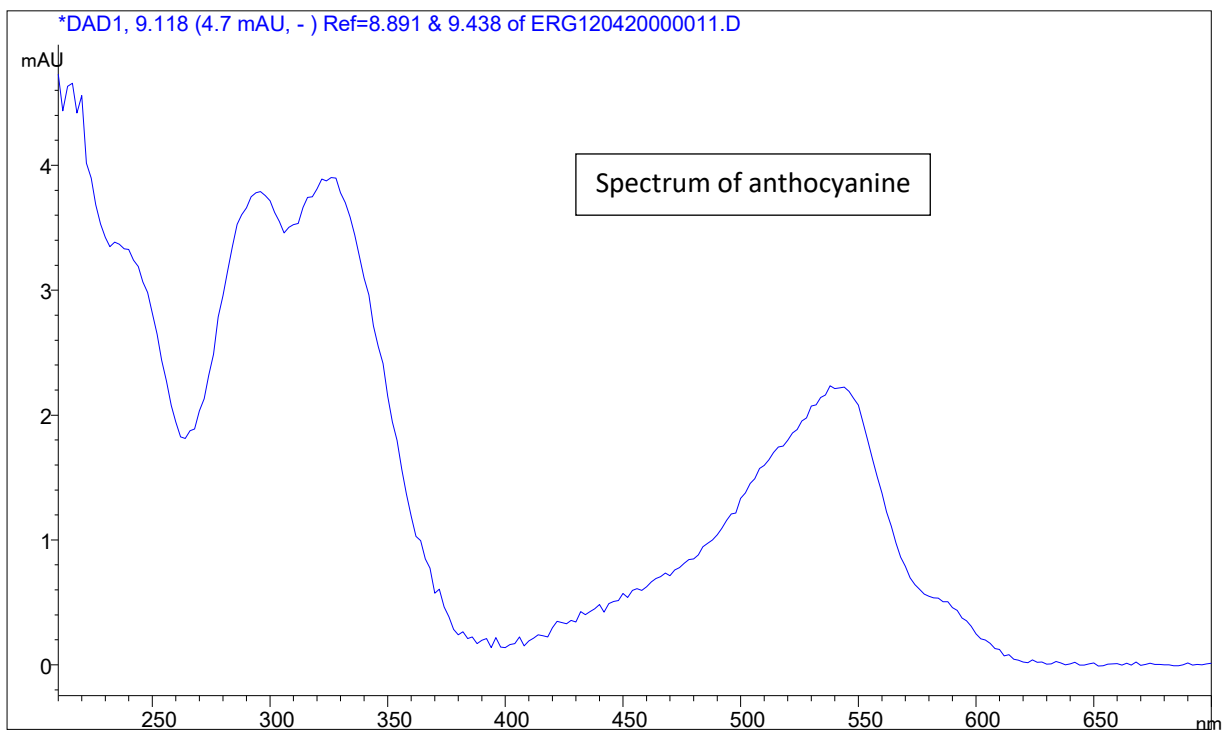
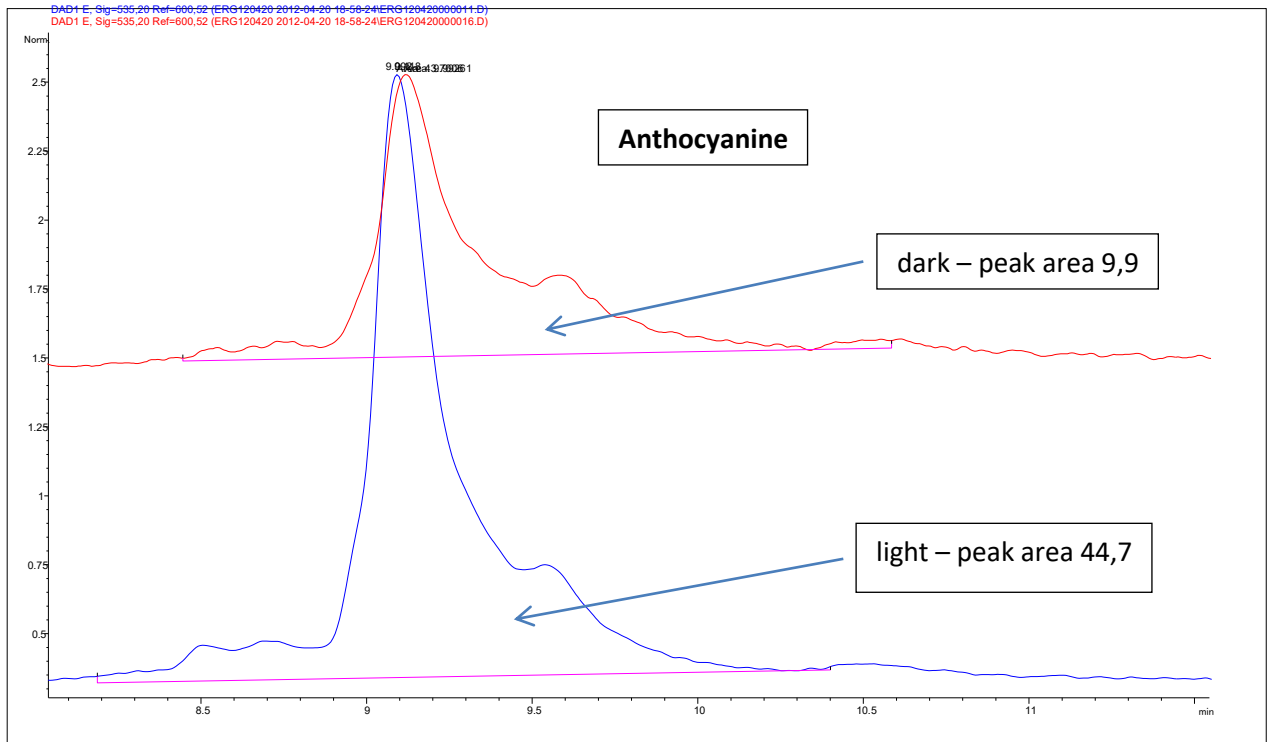
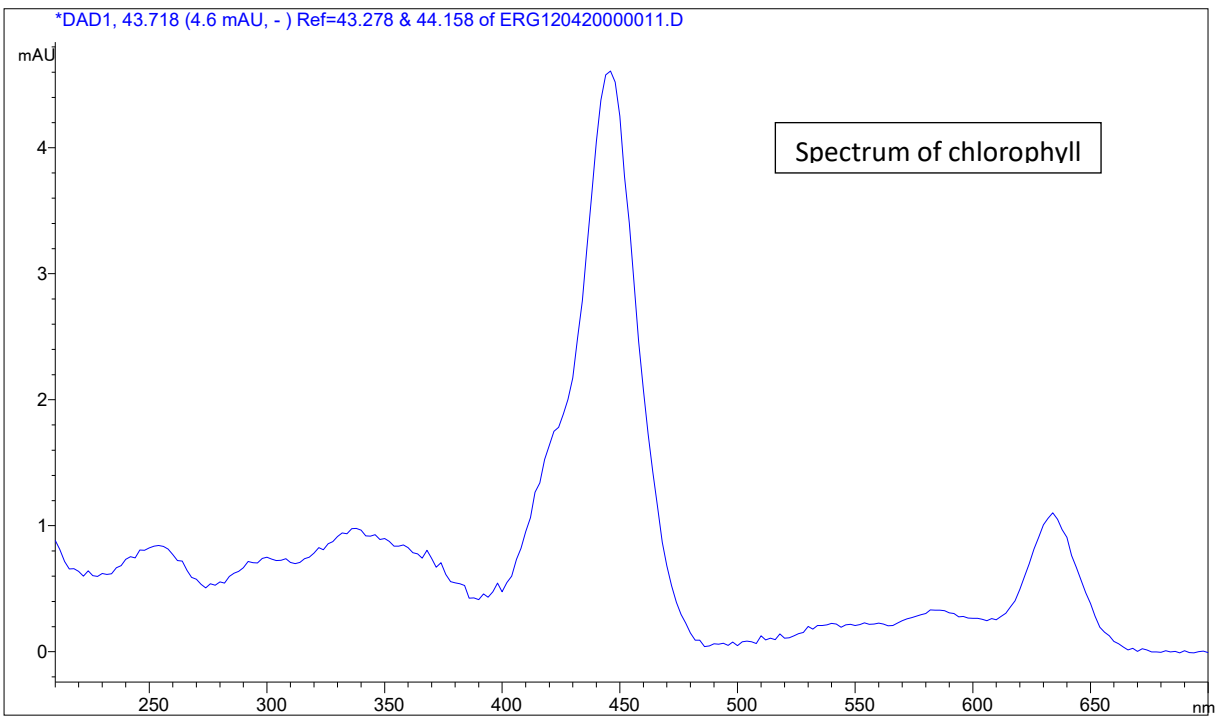
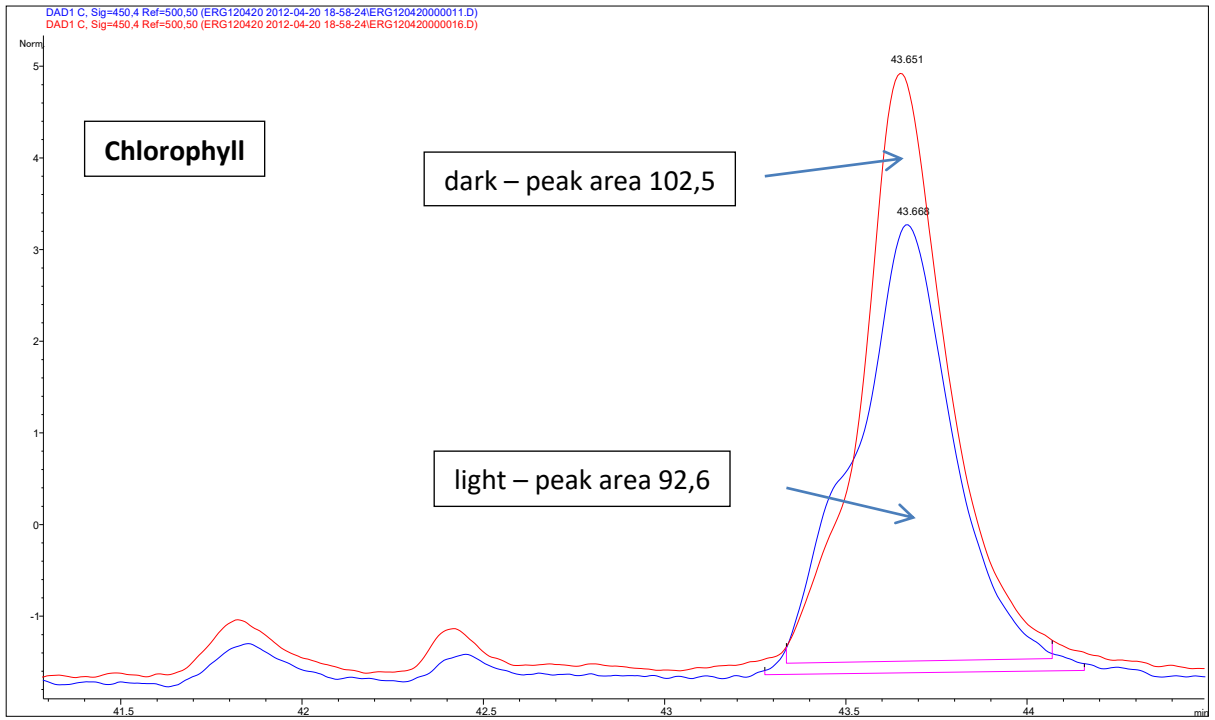


Tradescantia pallida – influence of light

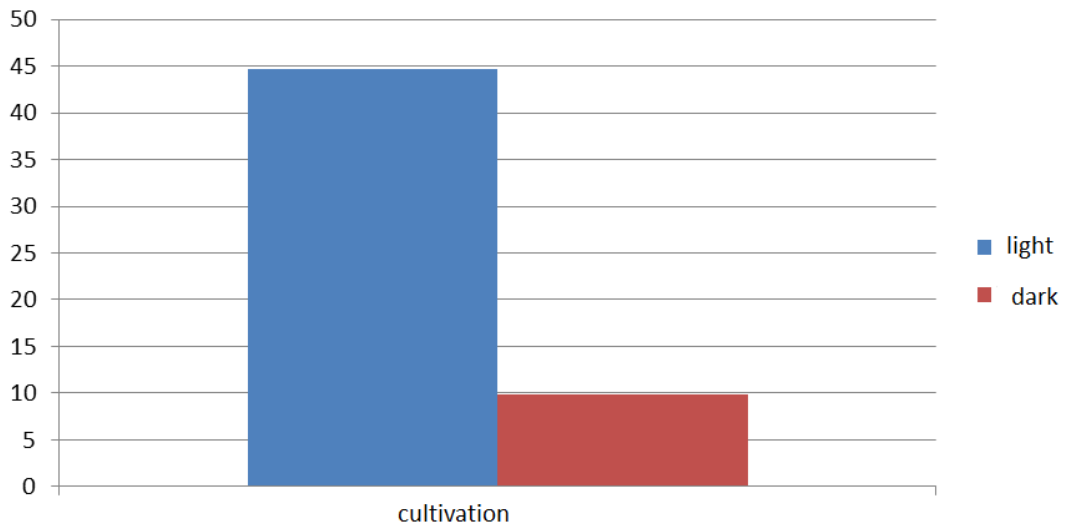
Anthocyanines – detector 535nm



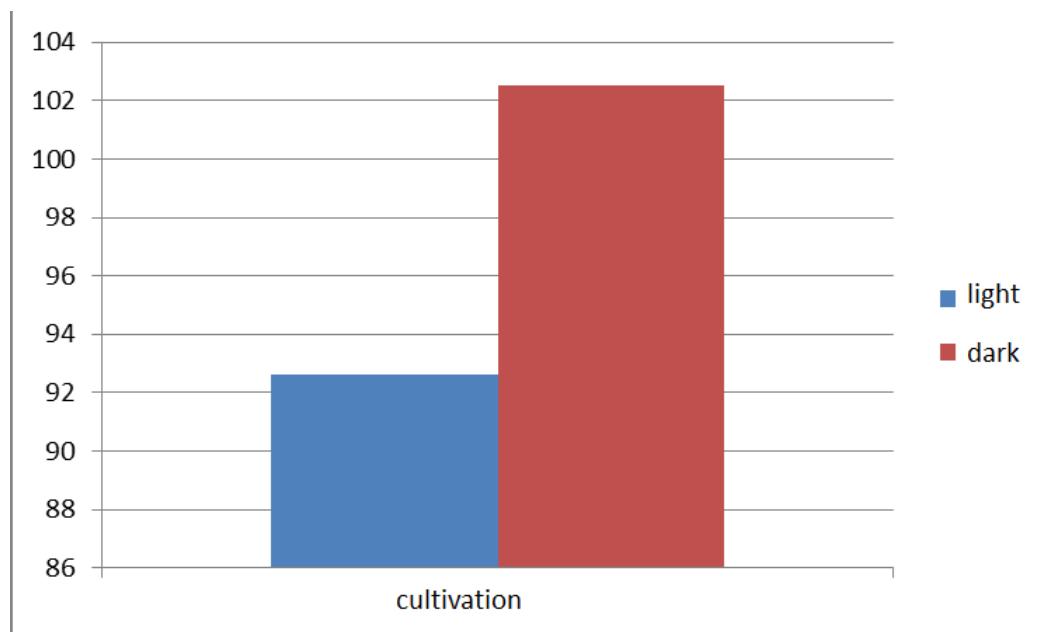
Chlorophyll – detector 450 nm



cultivation	anthocyanine- peak areas – fresh material
light	44.7
dark	9.9



cultivation	chlorophyll- peak areas – fresh material
light	92.6
dark	102.5



SUMMARY: The content of anthocyanins increases together with increasing intensity of light.

TASK: Calculate the relative concentration of anthocyanins and chlorophyll in dry mass and expressed it graphically.