

Antihypertensives

Tomáš Goněc

21.11.2011

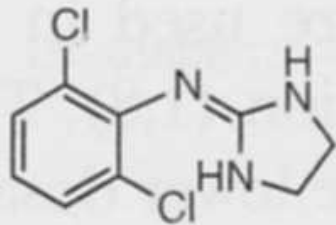
Hypertension

- blood pressure $>135/85$ mmHg
- most common cardiovascular disease
- untreated = major risk of coronary artery disease, heart failure, stroke, renal failure
- long-time untreated hypertension: left ventricle hypertrophy, retinopathy, angina pectoris, lung, liver, renal failure

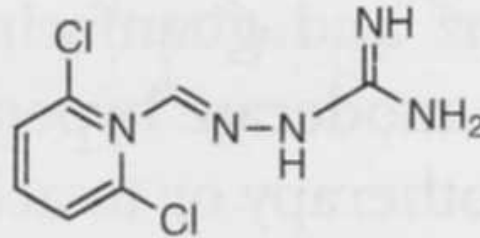
Hypertension – drug therapy

- central and peripheral autonomic innervation
- blood vessel wall relaxation
- renin-angiotensin-aldosterone system
- diuretics
- other mechanism

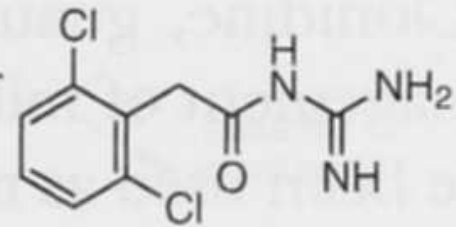
α_2 -adrenergic and imidazoline receptor agonists



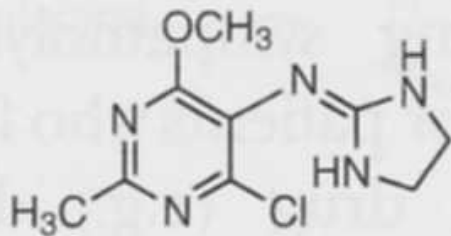
Clonidine



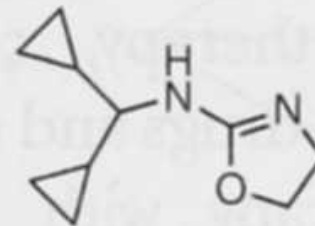
Guanabenz



Guanfacine



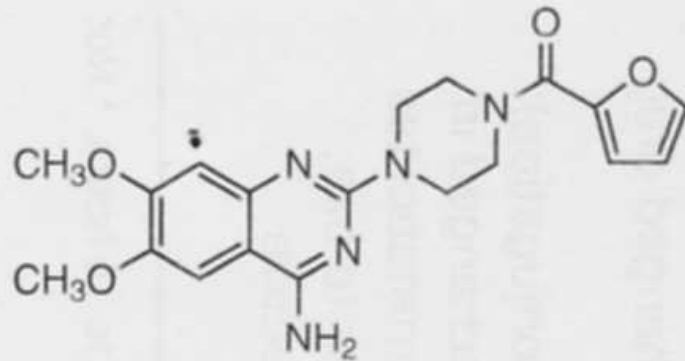
Moxonidine



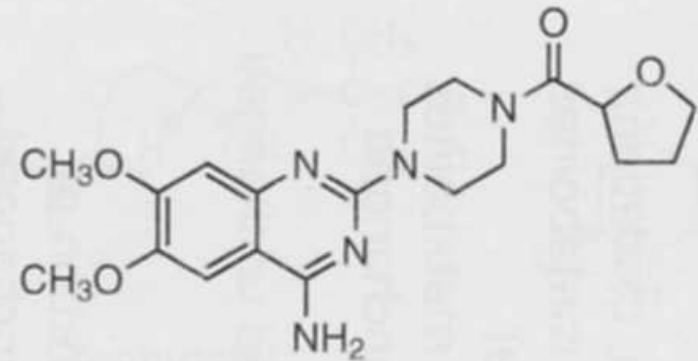
Rilmenidine

Fig. 24.5. Centrally acting sympatholytics.

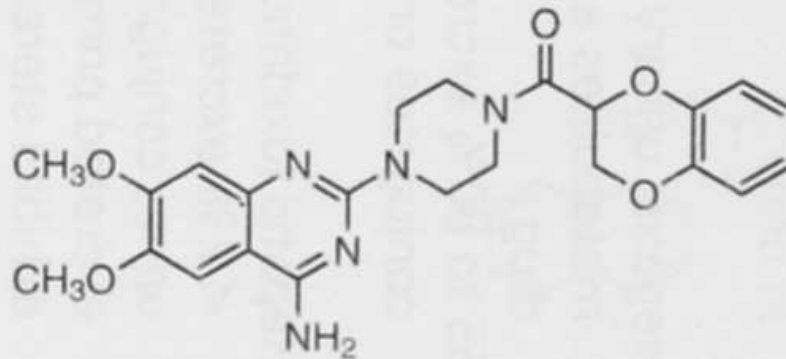
α_1 -adrenergic receptor antagonists



Prazosin



Terazosin

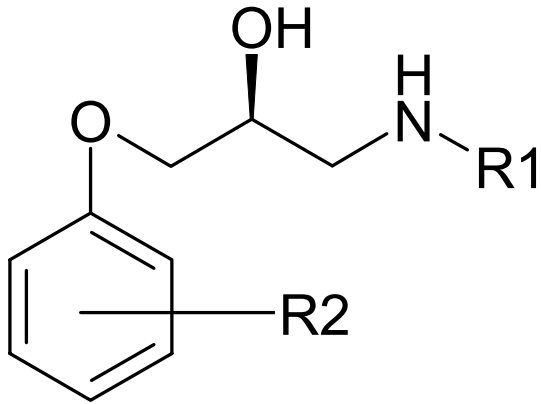


Doxazosin

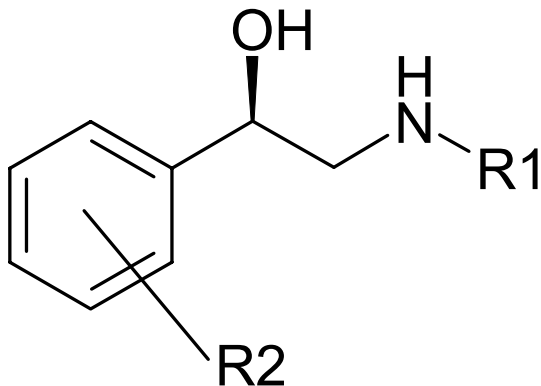
Fig. 24.3. α_1 selective adrenergic blockers.

β -blockers

□ general structure:



Aryloxypropanolamines



Arylethanolamines

β -blockers

- absolute configuration important

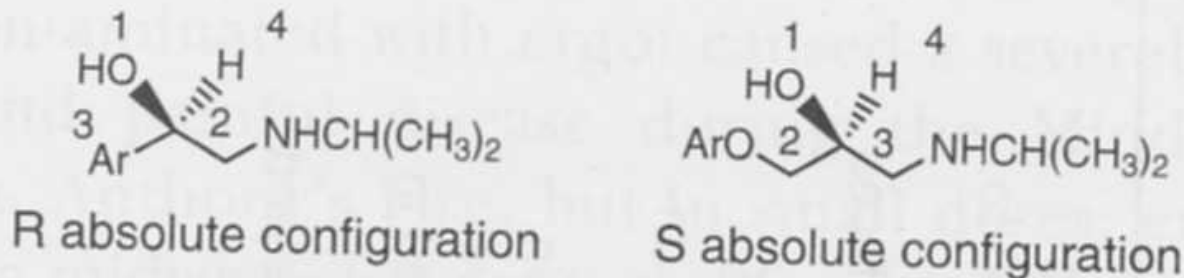


Fig. 11.18. Stereochemical nomenclature for arylethanolamines versus aryloxypropanolamines. The relative positions in space of the four functional groups are the same in the two structures; however, one is designated (R) and the other (S). This is because the introduction of an oxygen atom into the side chain of the aryloxypropanolamine changes the priority of two of the groups used in the nomenclature assignment.

β -blockers – non selective

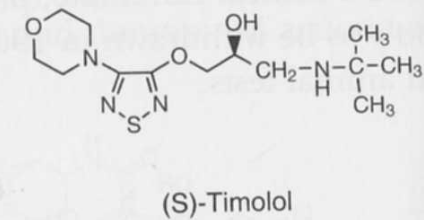
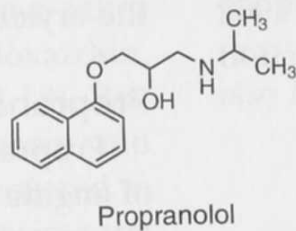
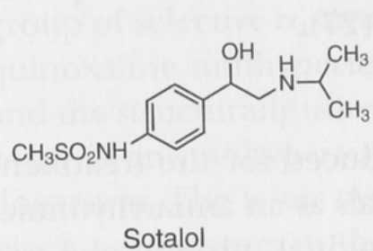
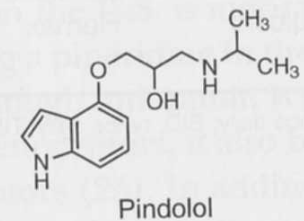
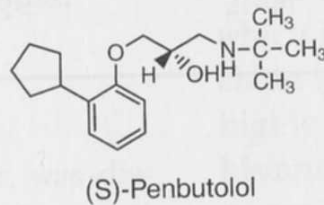
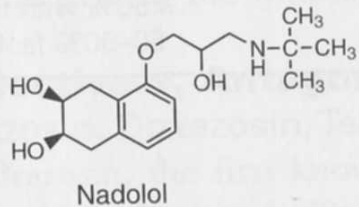
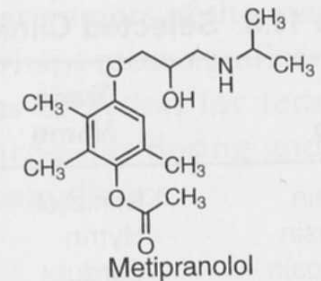
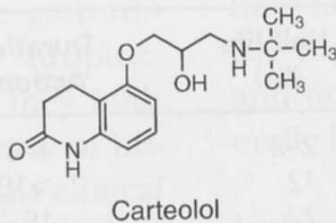
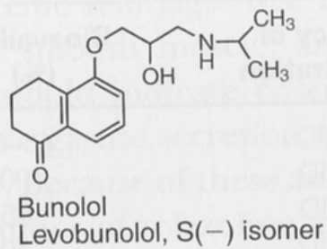
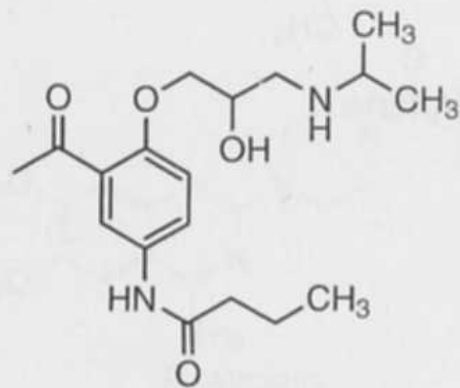
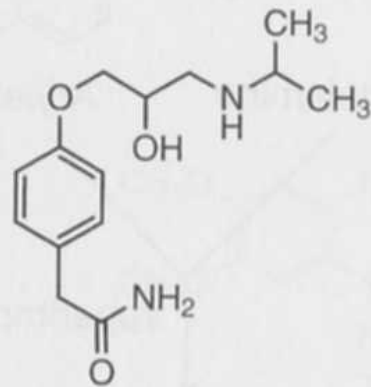


Fig. 11.15. Non-selective β -adrenergic antagonists.

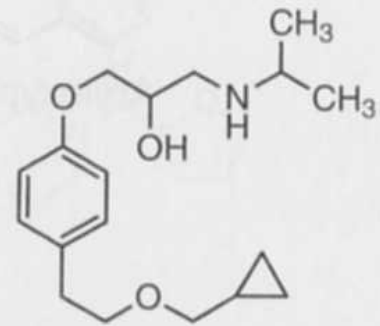
β -blockers - cardioselective



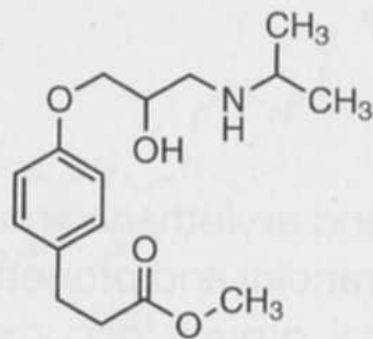
Acebutolol



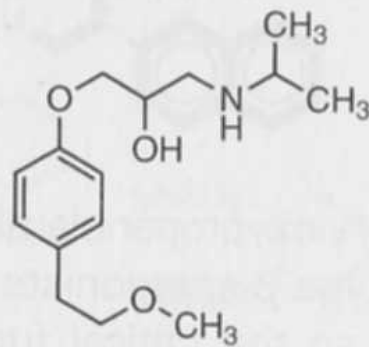
Atenolol



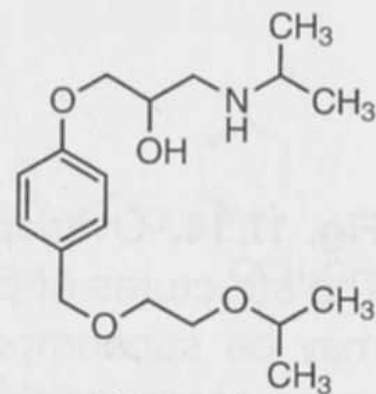
Betaxolol



Esmolol



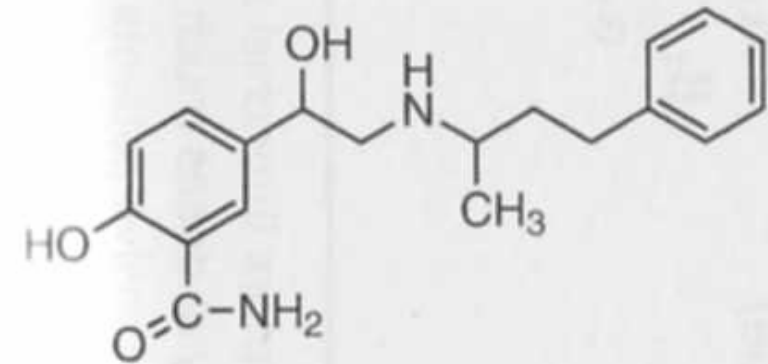
Metoprolol



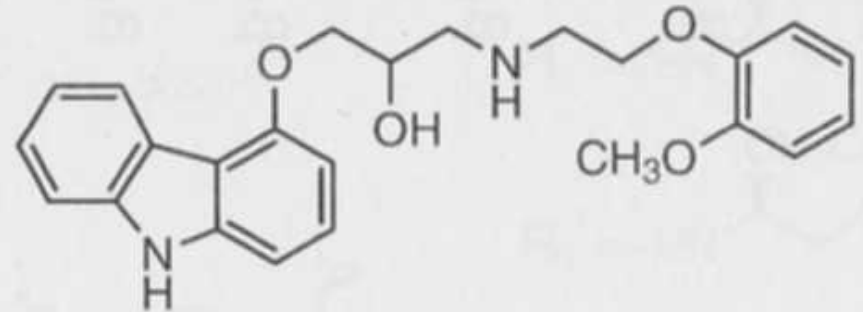
Bisoprolol

Fig. 11.16. Selective β_1 -adrenergic antagonists.

Mixed $\beta + \alpha$ antagonists



Labetalol



Carvedilol

Fig. 11.17. Mixed α/β -adrenergic antagonists.

Ca²⁺ blockers

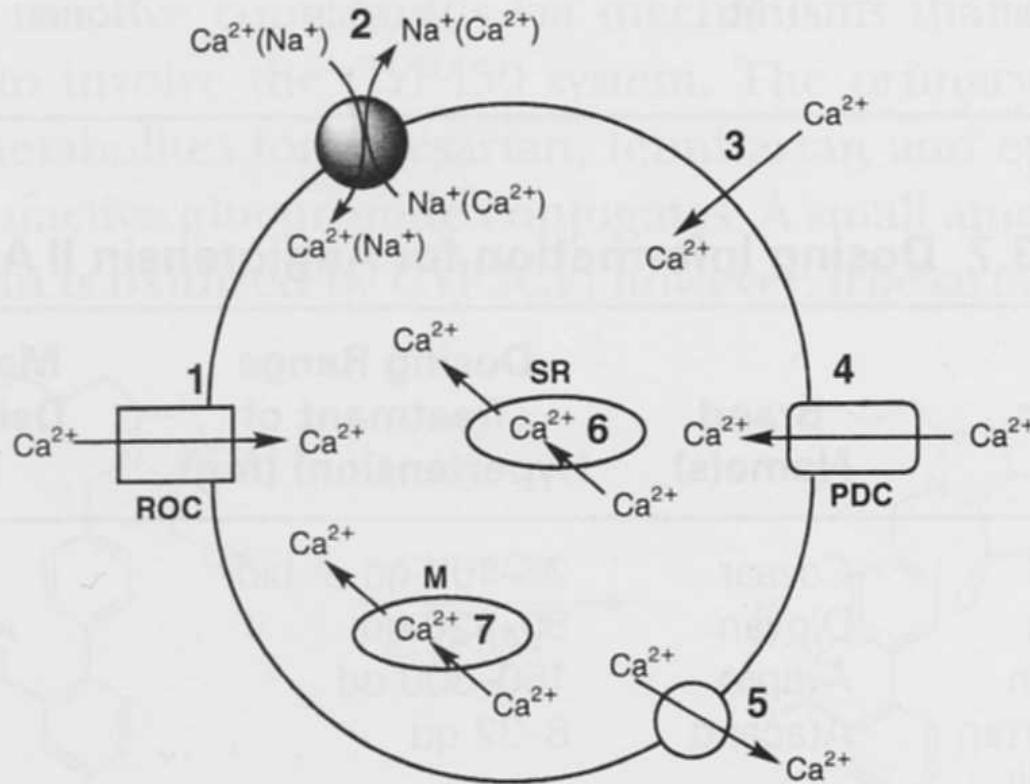
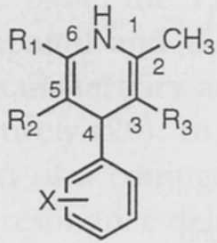


Fig. 23.20. Cellular mechanisms for the influx, efflux, and sequestering of Ca²⁺. Key: ROC = receptor-operated Ca²⁺ channels; PDC = potential-dependent Ca²⁺ channels; SR = sarcoplasmic reticulum; M = mitochondria.

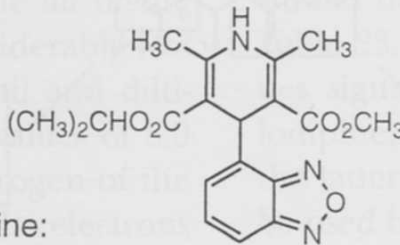
Ca²⁺blockers

- Verapamil, diltiazem
- dihydropyridines

General structure:

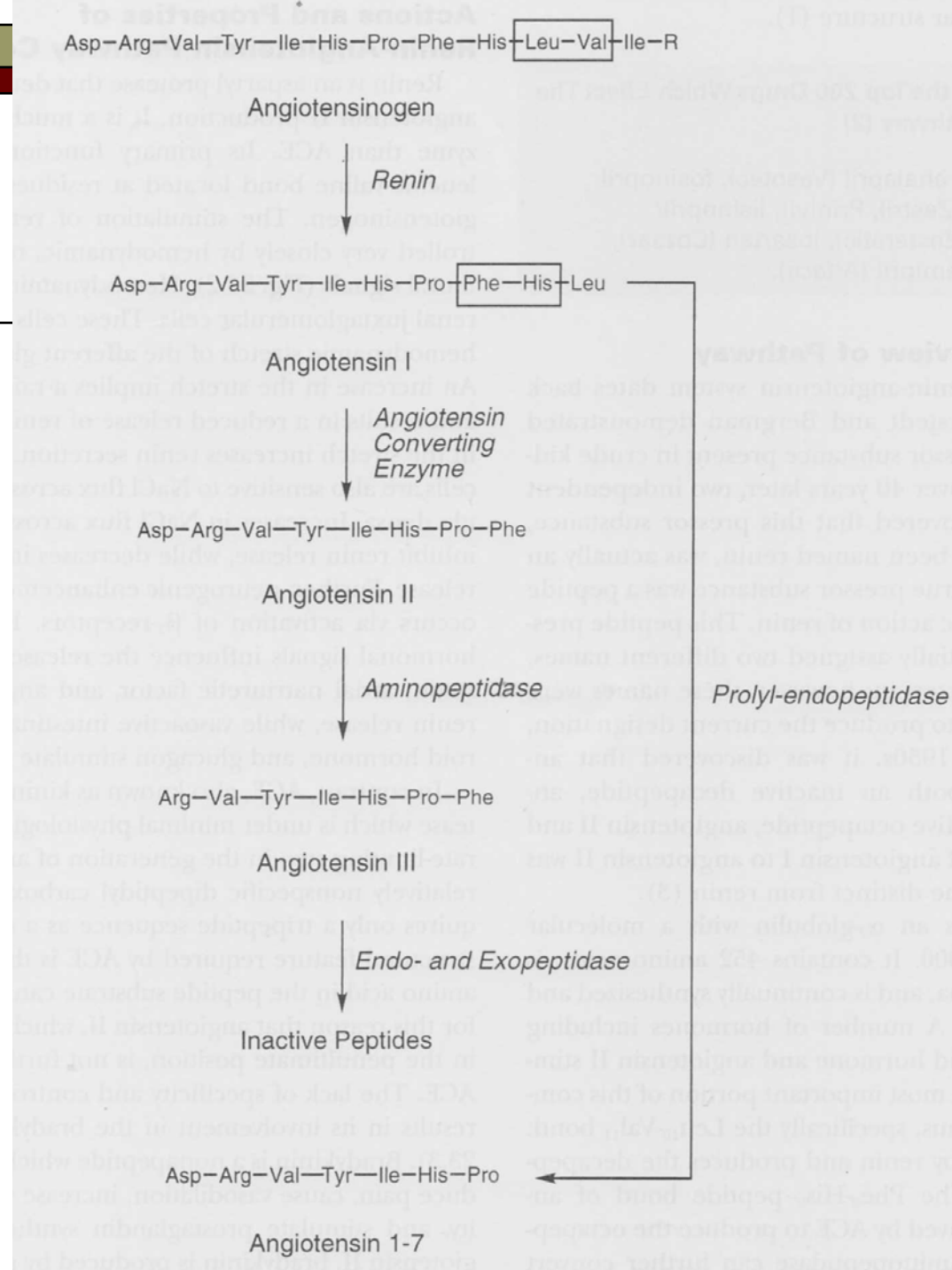


Isradipine:



Compounds	R ₁	R ₂	R ₃	X
Amlodipine	CH ₂ OCH ₂ CH ₂ NH ₂	CO ₂ CH ₂ CH ₃	CO ₂ CH ₃	2-Cl
Felodipine	CH ₃	CO ₂ CH ₂ CH ₃	CO ₂ CH ₃	2,3-Cl ₂
Nicardipine	CH ₃	CO ₂ CH ₂ CH ₂ -NH-CH ₂ ·C ₆ H ₅	CO ₂ CH ₃	3-NO ₂
Nifedipine	CH ₃	CO ₂ CH ₃	CO ₂ CH ₃	2-NO ₂
Nimodipine	CH ₃	CO ₂ CH ₂ CH ₂ OCH ₃	CO ₂ CH(CH ₃) ₂	3-NO ₂
Nisoldipine	CH ₃	CO ₂ CH ₂ CH(CH ₃) ₂	CO ₂ CH ₃	2-NO ₂

RAA system



ACE inhibitors – mechanism of action

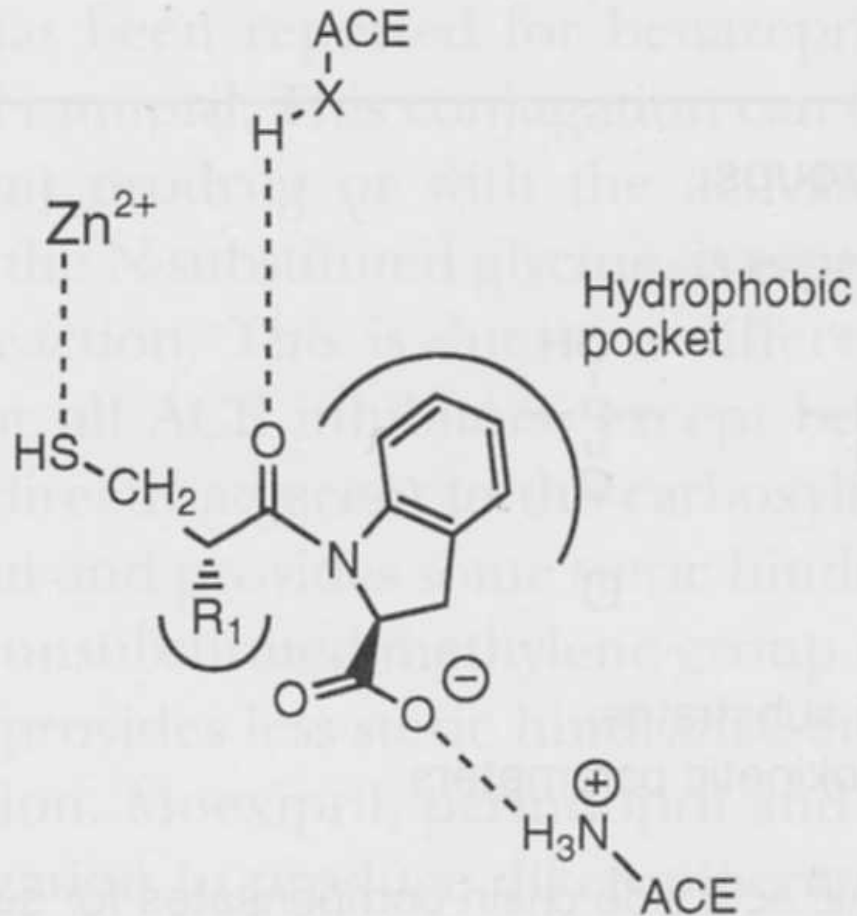
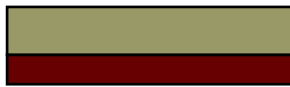


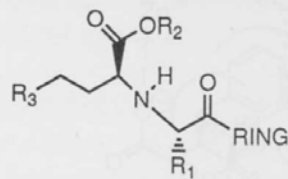
Fig. 23.10. A modified model of ACE inhibitor binding.



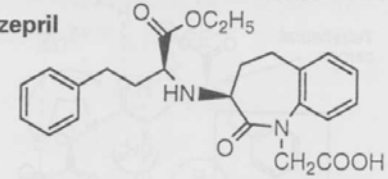
ACE



General Structure:



Benazepril



Compounds

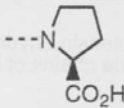
Ring

R₁

R₂

R₃

Lisinopril

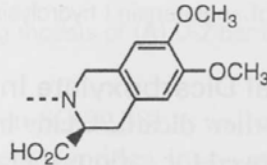


(CH₂)₄NH₂

H



Moexipril

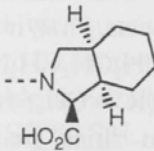


CH₃

CH₂CH₃



Perindopril

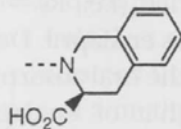


CH₃

CH₂CH₃

CH₃

Quinapril

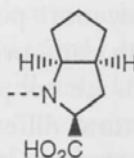


CH₃

CH₂CH₃



Ramipril

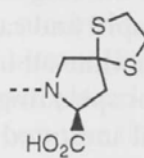


CH₃

CH₂CH₃



Spirapril

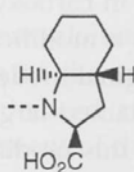


CH₃

CH₂CH₃



Trandolapril

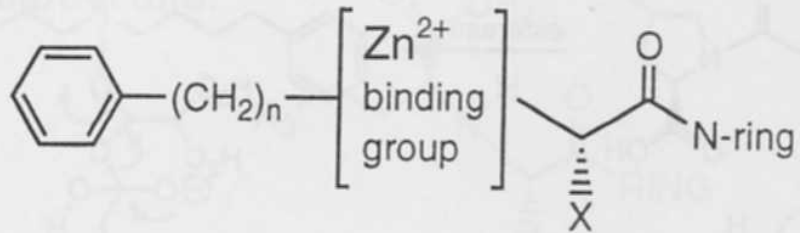


CH₃

CH₂CH₃



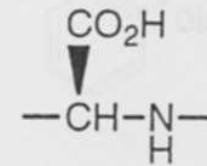
ACE inhibitors



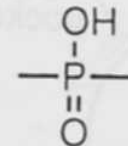
Zn²⁺ binding groups



A

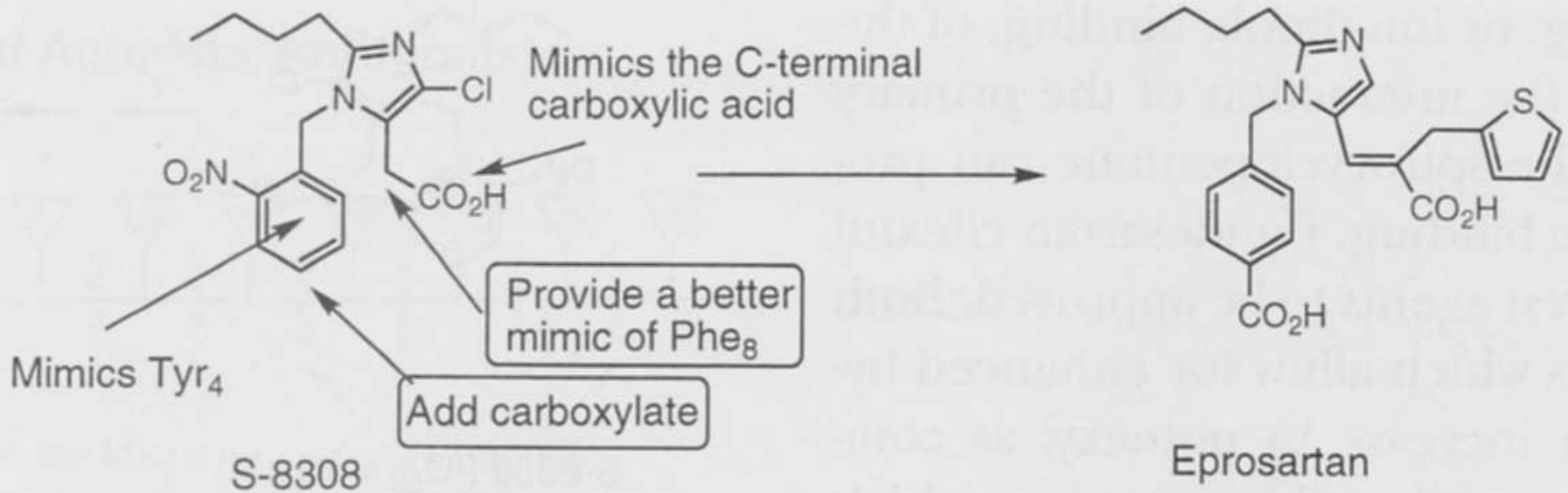


B

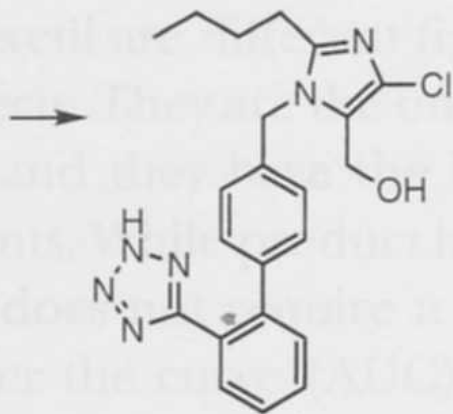


C

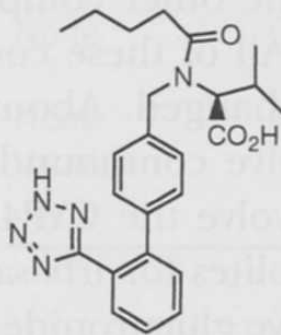
Angiotensin II inhibitors



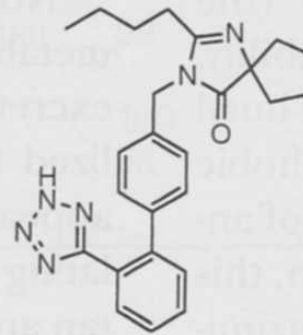
Angiotensin II inhibitors



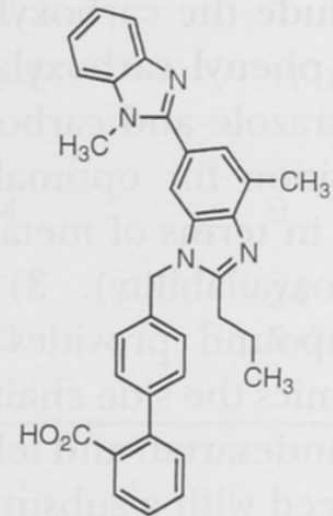
Losartan ($IC_{50} = 0.019\mu M$)



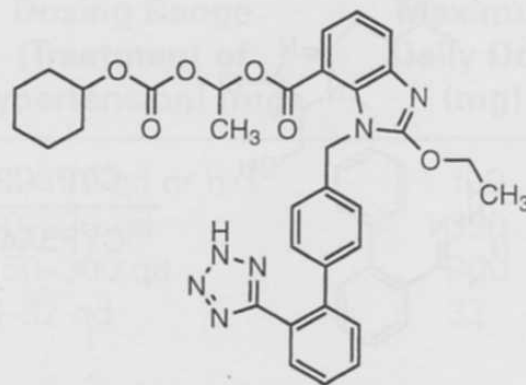
Valsartan



Irbesartan

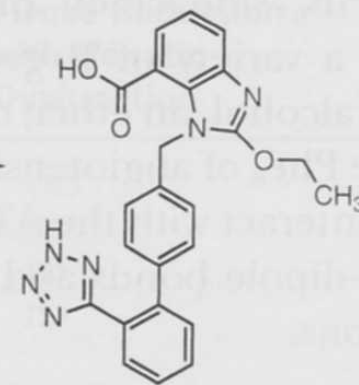


Telmisartan



Candesartan cilexetil

in vivo



Candesartan