

KARIM SHAHIR

- Near Jarmo and Sulamaniyah, Iraq
- Excavated by Bruce Howe

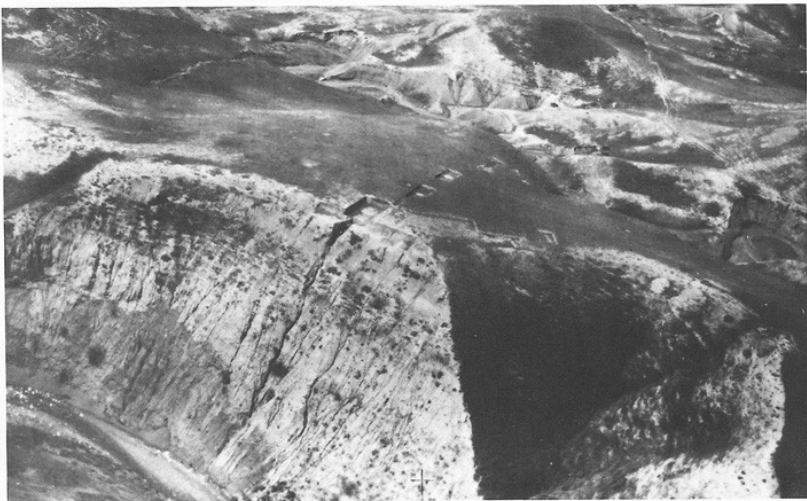


Fig. 3. Air view of Karim Shahir, looking west. Site covers much of grassy hilltop immediately above erosion scarp. Excavations visible along top edge of scarp and on hilltop. (Flight courtesy of the Iraq Petroleum Company, Ltd.)



Fig. 4. Scarp and stream bed at Karim Shahir, looking north-northwest. Step cut along eroding scarp edge on skyline marked by figures of workmen. At lower right, stream bed of the Cham-Gawra, some 40 m below scarp edge.



Fig. 7. Plot plan of Karim Shahir, showing location of excavation operations and principal features exposed: major operation I, including the 20-m north-south step and pits, the adjacent 5-m² grids A, B, C, F, G and the extension (ext.) with rocky "pavement" and stone scatter, and the trench (tr.); minor operations II-VIII; and three unlabeled geological exposures (2 trenches and 1 pit) cut in eroded face of scarp into underlying sterile silts.

Karim Shahir setting



Fig. 7. Plot plan of Karim Shahr, showing location of excavation operations and principal features exposed: major operation I, including the 20-m north-south step and pits, the adjacent 5-m² grids A, B, C, F, G and the extension (ext.) with rocky "pavement" and stone scatter, and the trench (tr.); minor operations II-VIII; and three unlabeled geological exposures (2 trenches and 1 pit) cut in eroded face of scarp into underlying sterile silts.

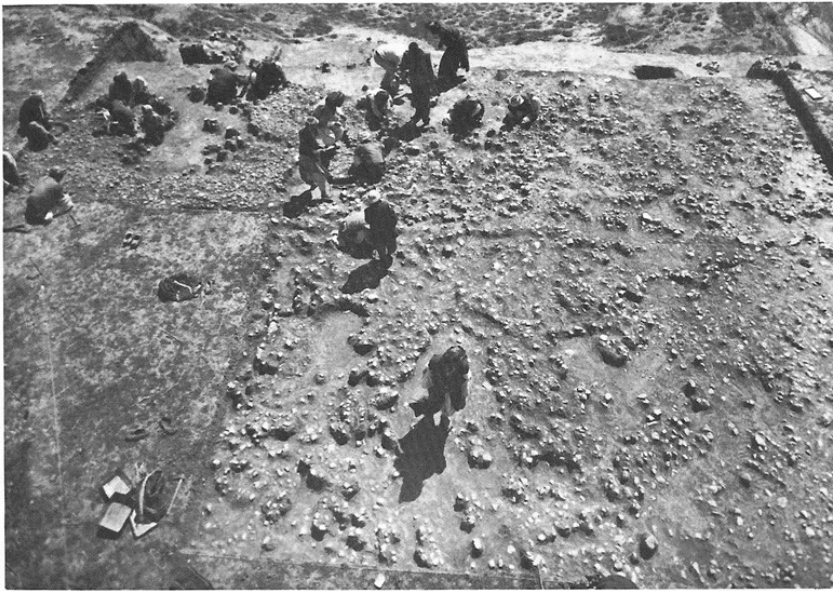


Fig. 8. View east over operation I at Karim Shahr, showing central portion of exposed shallow occupation floor of scattered stones and close-set rocky "pavement." Grid A and the extension constitute most of view, with small parts of grids B and F appearing along right edge of picture. Upper half of photograph shows eastern edge of excavations, delimited to left by curving natural edge of scarp and to right by straight line of northern end of step.

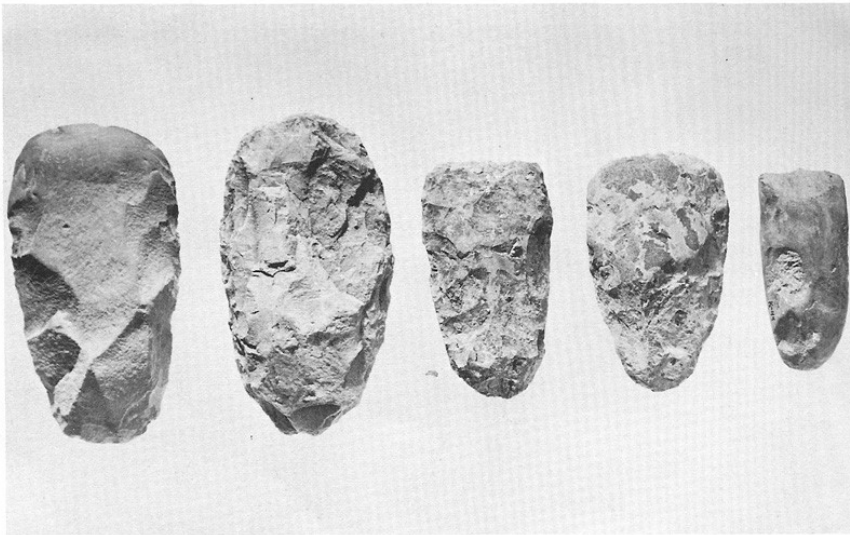


Fig. 9. View east over operation I at Karim Shahr, showing southernmost part of exposed occupation floor with scattered stones. Grids F and G are in foreground, grids B and C in background, with straight edge of north-south step at top of picture. The turf later removed in the excavation of the extension appears along left side of view.

Rock layer at Karim Shahr



A



B

A. Scatter of cracked limestone pebbles at Karim Shahir. B. Chipped flint celts with polished bits, from Karim Shahir. Scale, 2:3



Coarse ground stone pestles (1-2), muller or grindstone (3), subcuboid hammer (4), grooved rubbing stones (5-6), and fragment of decorated palette or grindstone (7), clay figurine (8), finely ground stone beads and pendants (9-14), marble rings or bracelets (15-16), all from Karim Shahir. Scales, 2:3 (1-7) and 1:1 (8-16)

Stone tools from Karim Shahir

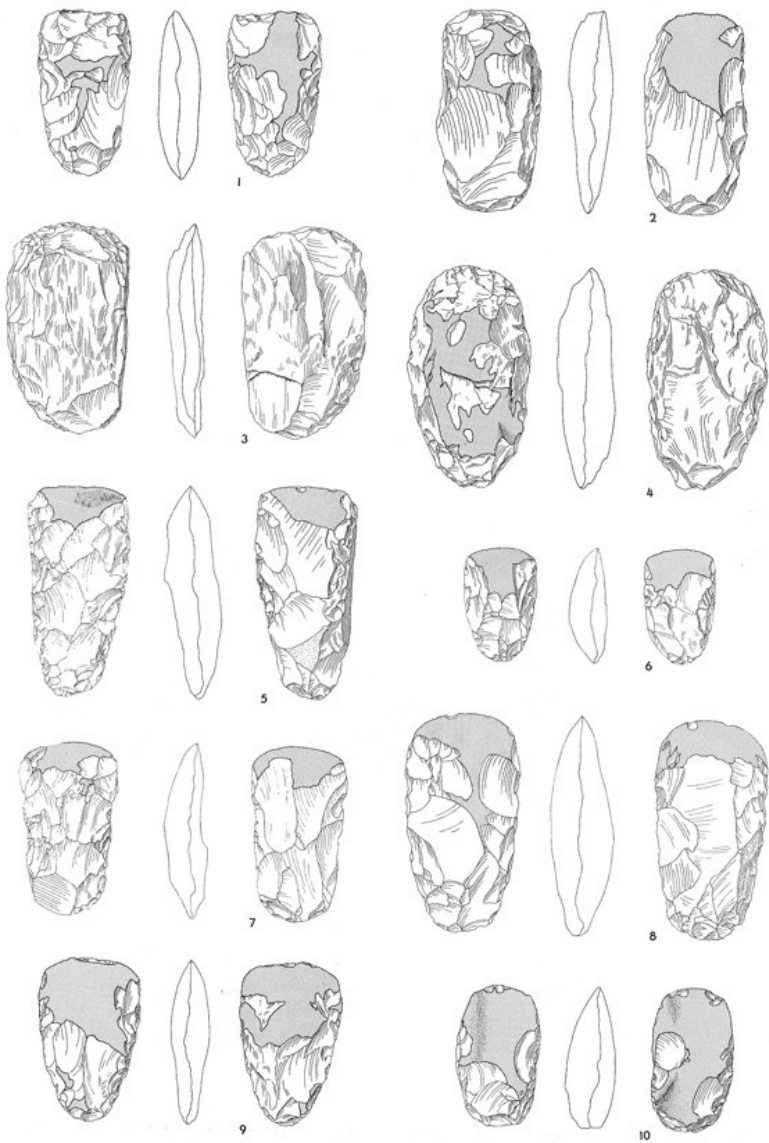


Fig. 13. Karim Shahir chipped and polished celts: adze/hoes, 1-4,6-7; adze/hoe or axe, 5; axes, 8-10. Scale 1:2.

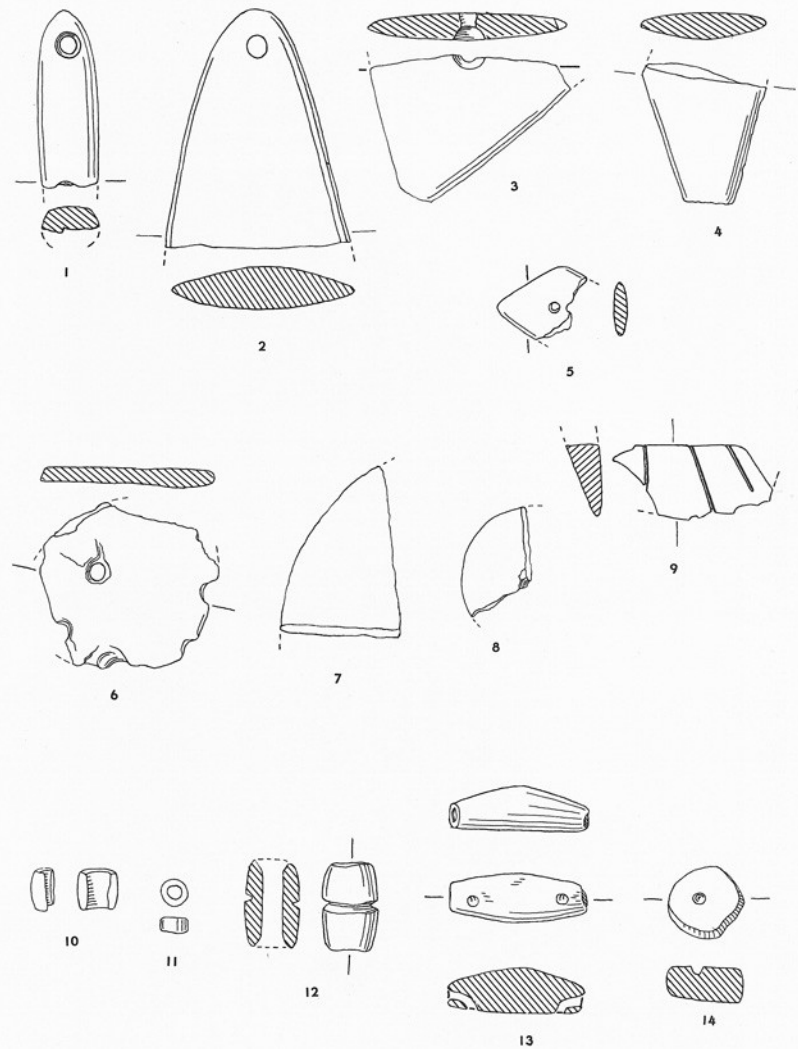


Fig. 11. Karim Shahir ground stone: fragmentary pendants, 1-2; fragmentary plaques, 3-9; beads, 10-13; bead rough-out, 14. Scale 1:1.

Celts and stone objects from Karim Shahir

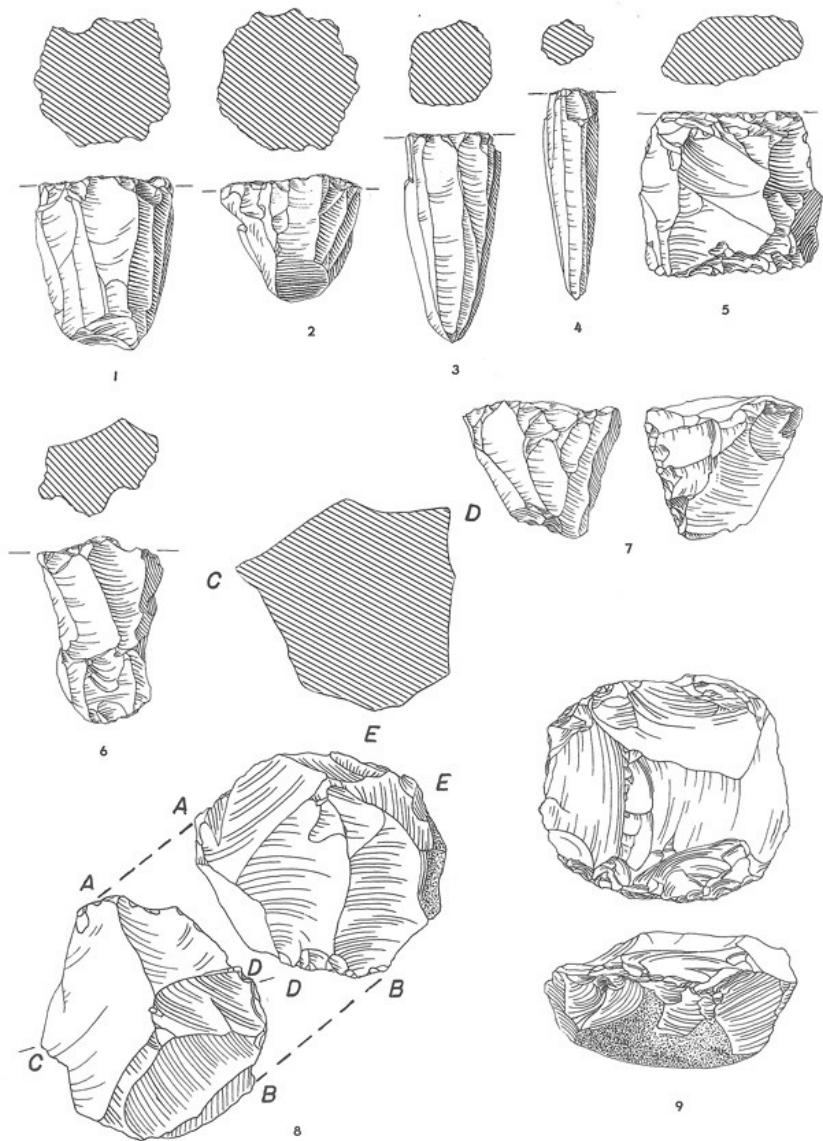


Fig. 21. Karim Shahir chipped stone: fully pyramidal blade cores, 1-4; bipolar cores, 5-7; polyhedral/amorphous core, 8; discoid core, 9. Scale 1:1

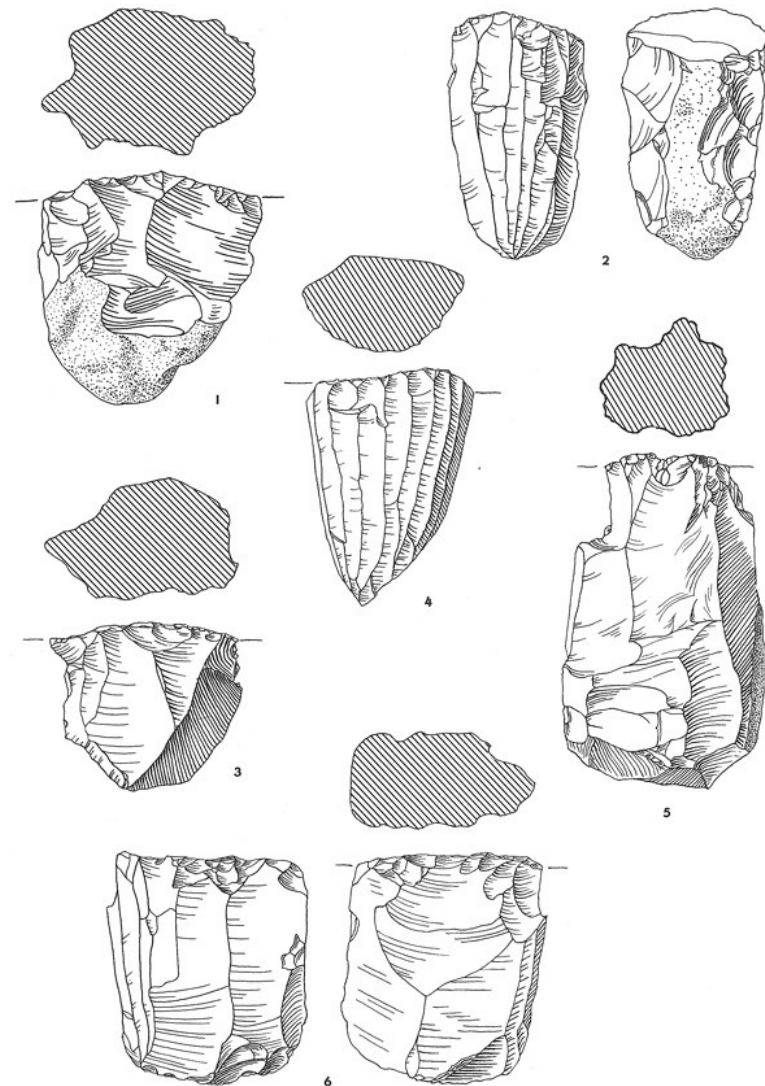


Fig. 20. Karim Shahir chipped stone: partial pyramidal flake cores, 1,3; partial pyramidal blade cores, 2,4; fully pyramidal flake cores, 5-6. Scale 1:1.

Various cores from Karim Shahir

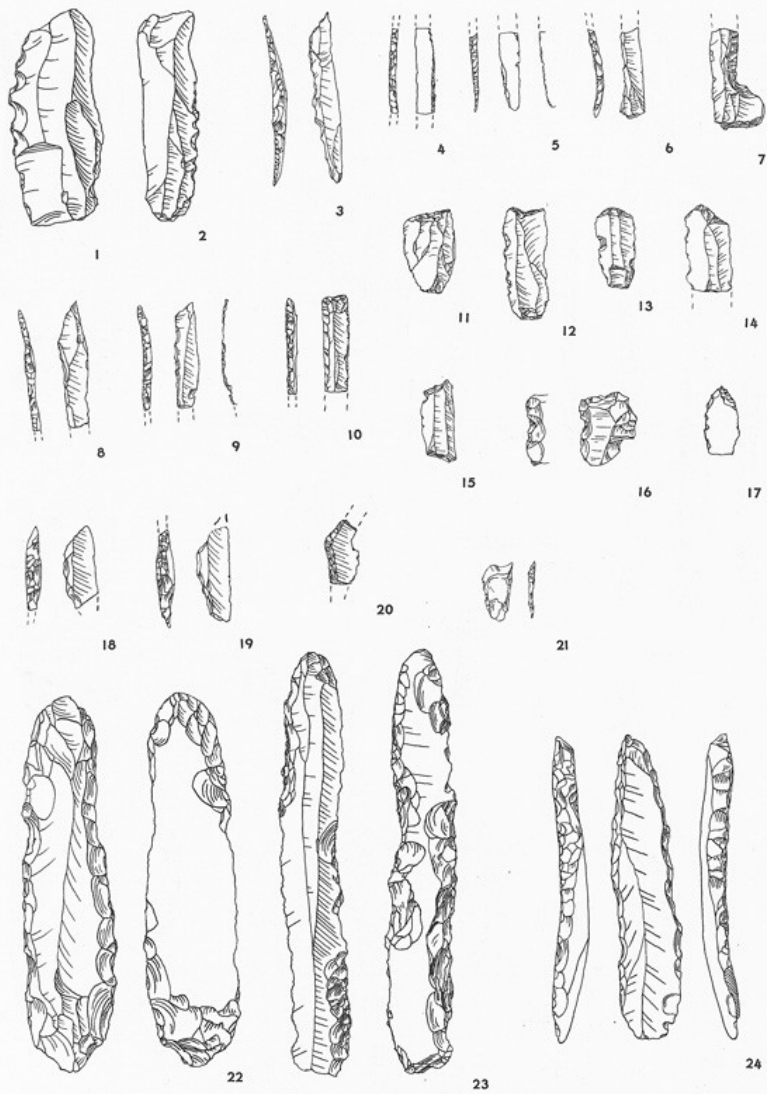


Fig. 14. Karim Shahir chipped stone: denticulated blades, 1-2; microlithic backed bladelets, 3-10; microlithic end scrapers, 11-16; microlithic pointed bladelet, 17; chance geometric microliths, 18-21; fabricators, 22-24. Scale 1:1.

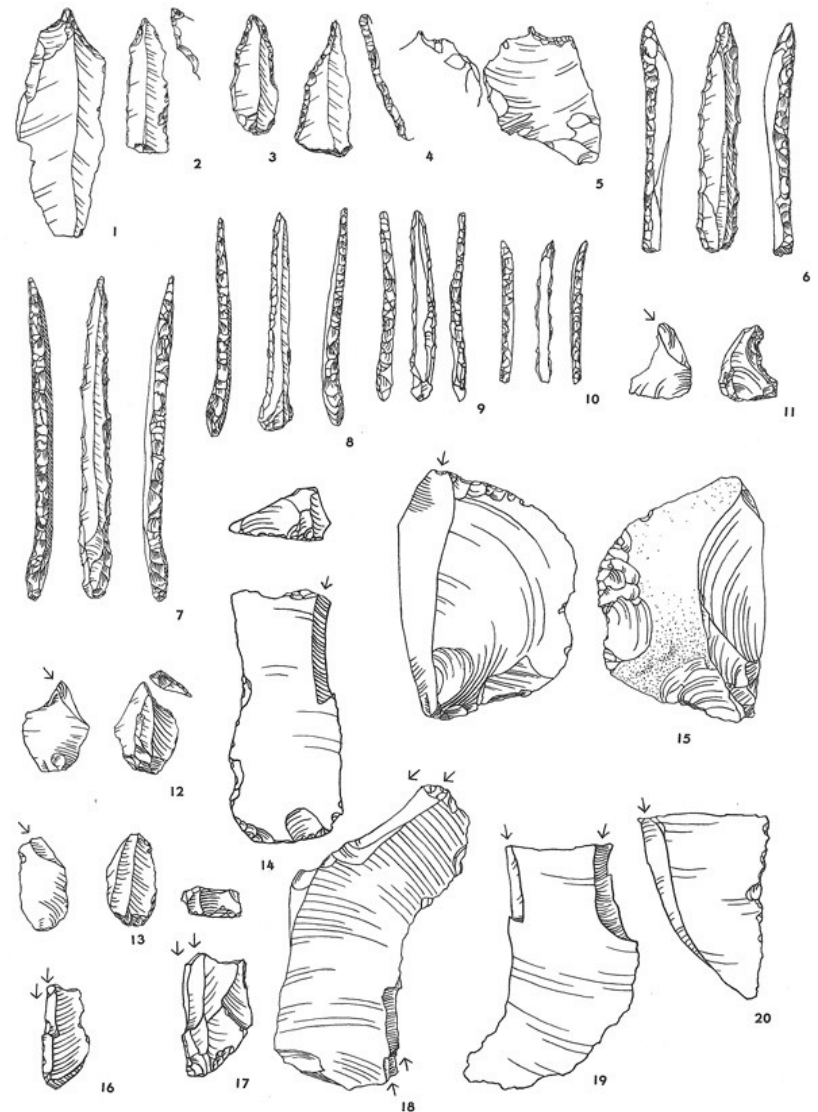


Fig. 15. Karim Shahir chipped stone: drills, normal-sized, 1-5; drills, microlithic, 6-7; drills, super-microlithic, 8-10; microburins, 11-13; burins, various, 14-20. Scale 1:1.

Lithic types from Karim Shahir



The mound called M'Lefaat, seen looking westwards across the Khazir River. M'Lefaat proved on sounding to be of an even earlier phase than Jarmo

M'lefaat a PPN site with "M'lefaatian" industry