

Fig. 5. Nevalı Çori I. Reconstruction of settlement II

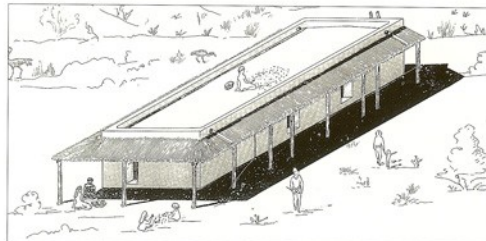


Fig. 6a. Nevalı Çori,
Tentative
reconstruction 1 of house
21A/B, Level I/II

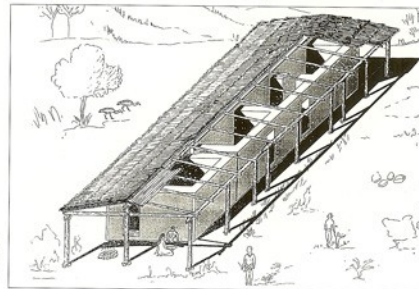


Fig. 6b. Nevalı Çori, Tentative
reconstruction 2 of house
21A/B, Level I/II

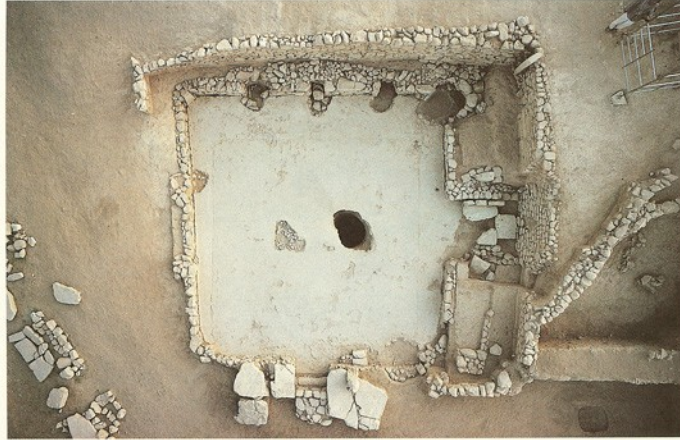


Fig. 7. Nevalı Çori, Cult building II



Fig. 8. Nevalı Çori, Cult building III

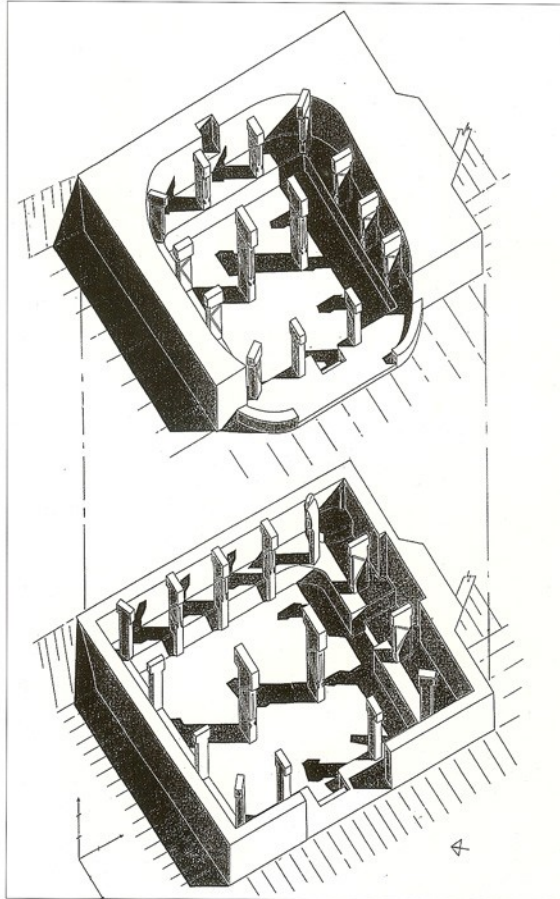


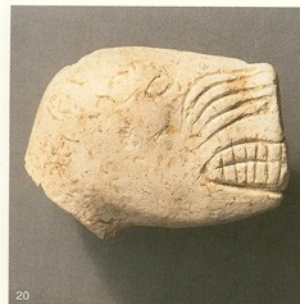
Fig. 9. Nevalı Çori, Axonometric reconstruction of cult building II and III



Fig. 11 A-B. Nevalı Çori, Torso. Limestone. H. 0,37 m.



Fig. 12 A-B. Nevalı Çori, Hybrid creature. Limestone. H. 0,23 m.



20



Fig. 20. Nevalı Çori, Miniature lion head. H. 4,4 cm.

Fig. 21. Nevalı Çori, Male clay figurine. H. 5,8 cm.

Fig. 22. Göbekli Tepe, 'Schlangenföllergeräude', Pillar 2. H. 3,15 m.

Fig. 23. Göbekli Tepe, 'Löwenföllergeräude'

Fig. 24. Göbekli Tepe, Pillar 1 with lion relief



21



Fig. 25. Göbekli Tepe, Pillar with sculpture of a bear or lion

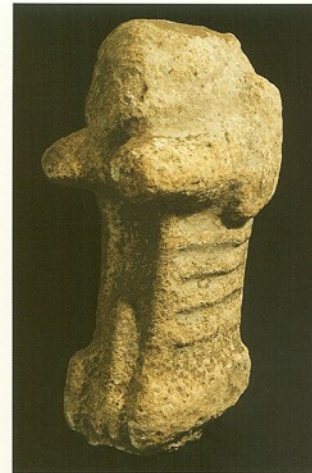


Fig. 26. Göbekli Tepe, Ithyphallic statue. H. 0.68 m.



Fig. 27. Göbekli Tepe, T-Pillar with animal-relief

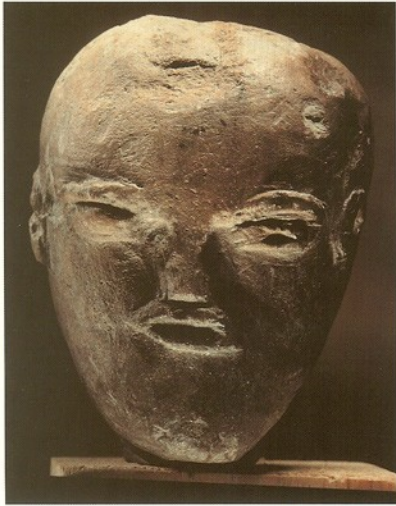


Fig. 18. Nevalı Çori, Miniature head of limestone.
H. 5,9 cm.

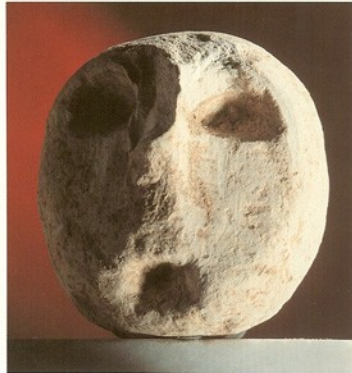


Fig. 19. Nevalı Çori, Miniature masque of limestone.
H. 4,4 cm.





Fig. 15. Nevalı Çori,
Brd. Limestone.
L. 0,50 m.



Fig. 16. Nevalı Çori,
Limestone bowl with
relief.
H. 13,5 cm.

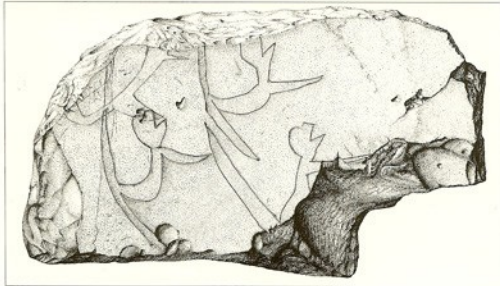


Fig. 17. Nevalı Çori,
Limestone plate with
engravings.
L. 0,40 m.





Fig. 28. Göbekli Tepe, Head. H. 23 cm



Fig. 30. Göbekli Tepe, Schlangenteilergebäude, T-Pillar 9 with relief of a fox

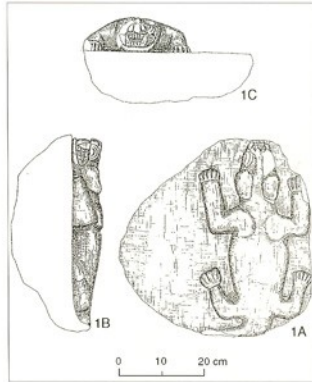


Fig. 29. Göbekli Tepe, Animal-relief (feline ?)

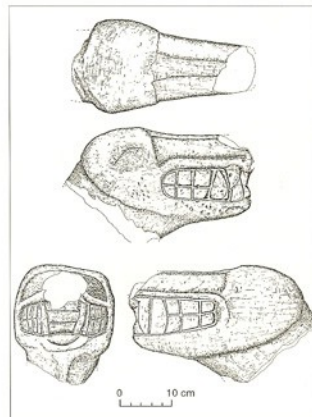


Fig. 31. Göbekli Tepe, Sculpture of a feline



Fig. 13. A-B. Nevalı Çori, Pillar with female head and bird. Limestone. H. of the head 0,29 m.



Fig. 14. A-B. Nevalı Çori, Composite figure. Limestone. H. appr. 1 m.

