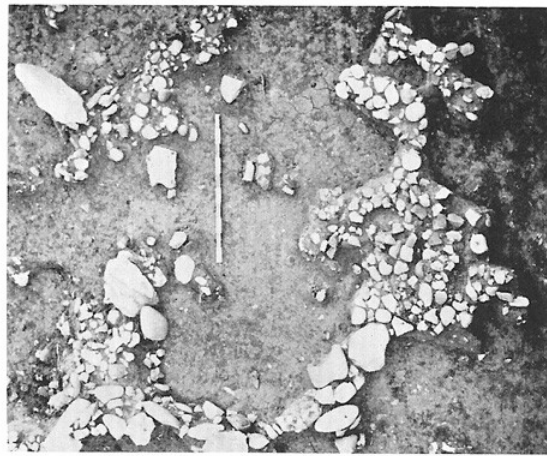


Zawi Chemi Shanidar

- Excavated by Rose Solecki
- Site is near Shanidar Cave
- On river bank



a



b

Zawi Chemi huts And modern hut



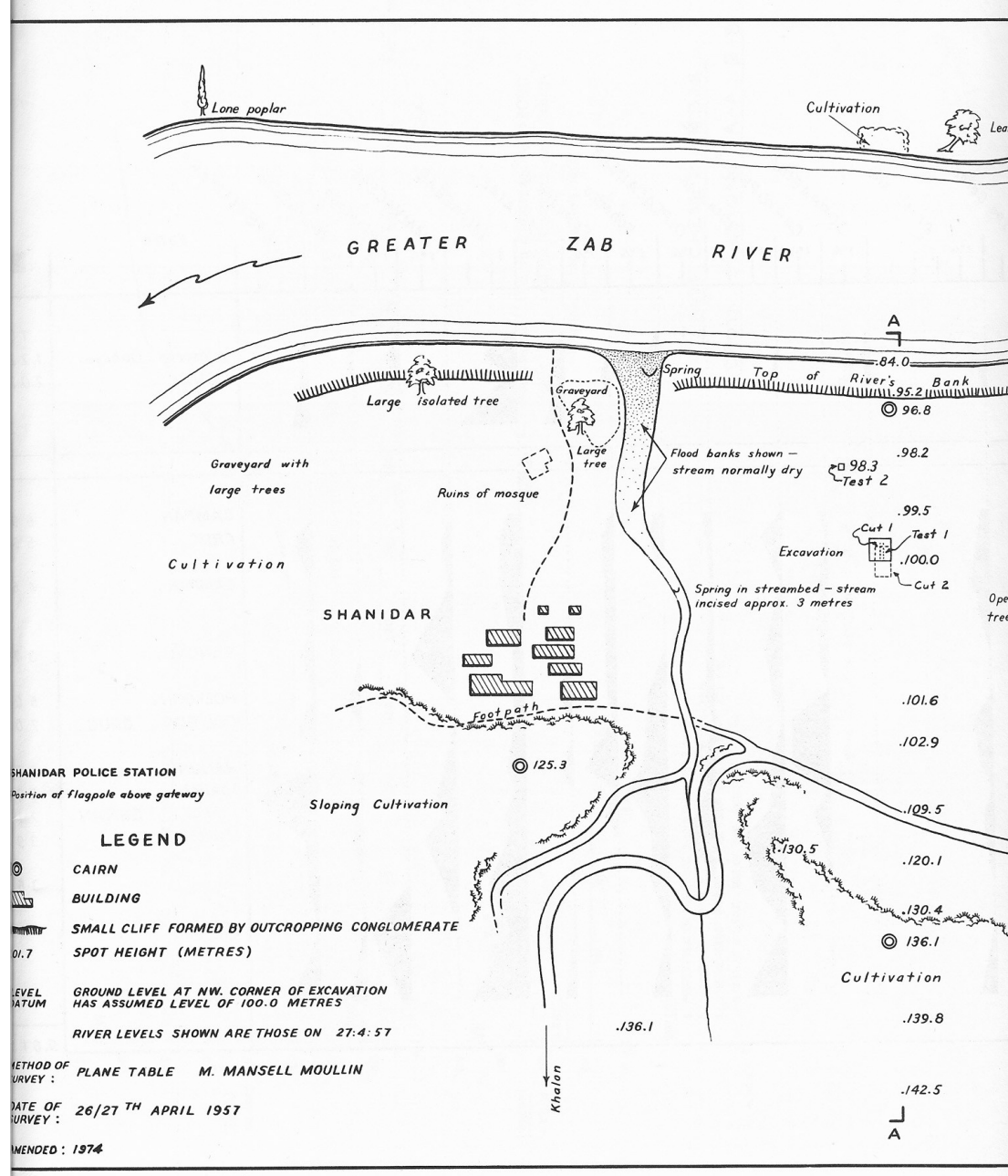
c



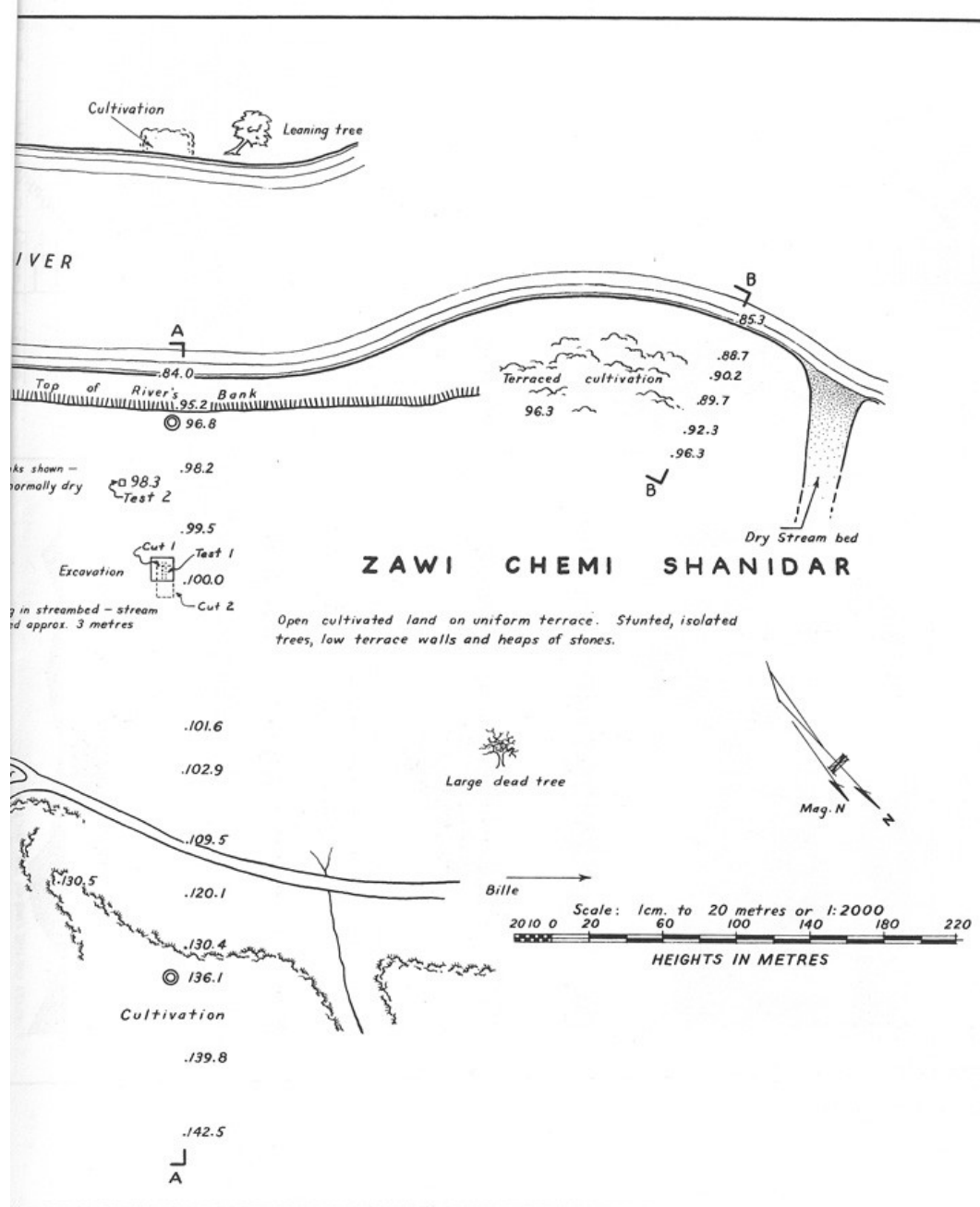
d

Plate 3. Structure I, Modern Animal Shelter, Modern Flood Plain
Agriculture at Shanidar Village

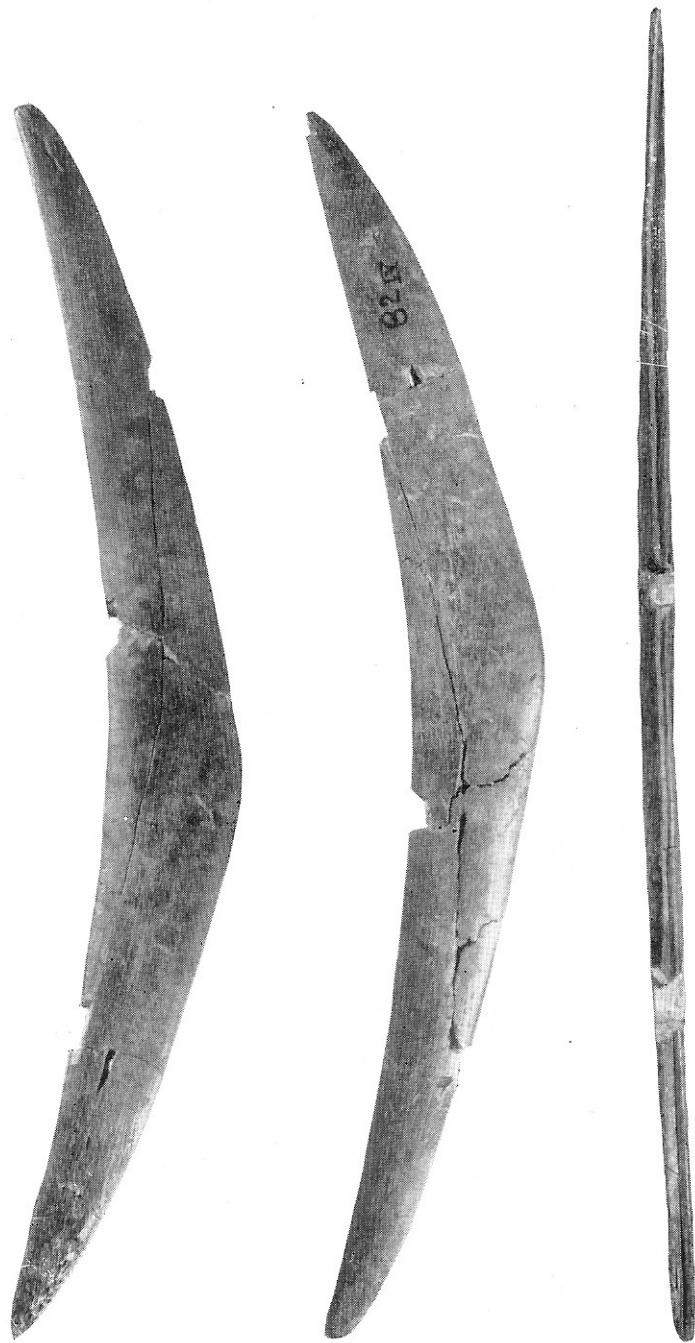
a,b, Structure I, Cut 1. c, Modern animal shelter at Shanidar village. d, Modern flood plain agriculture at Shanidar village, along the Greater Zab river.



Zawi Chemi on river bank



Detail of excavation



Pl. 1. Grooved Bone Object from Zawi Chemii Shanidar, Possible Sickle Haft

(7) *Threaded Grooved* (Fig. 1M). This is a unique object. It is a roughly elongate-rectangular, box-shaped stone, with four right-angle sides but with irregular ends. One

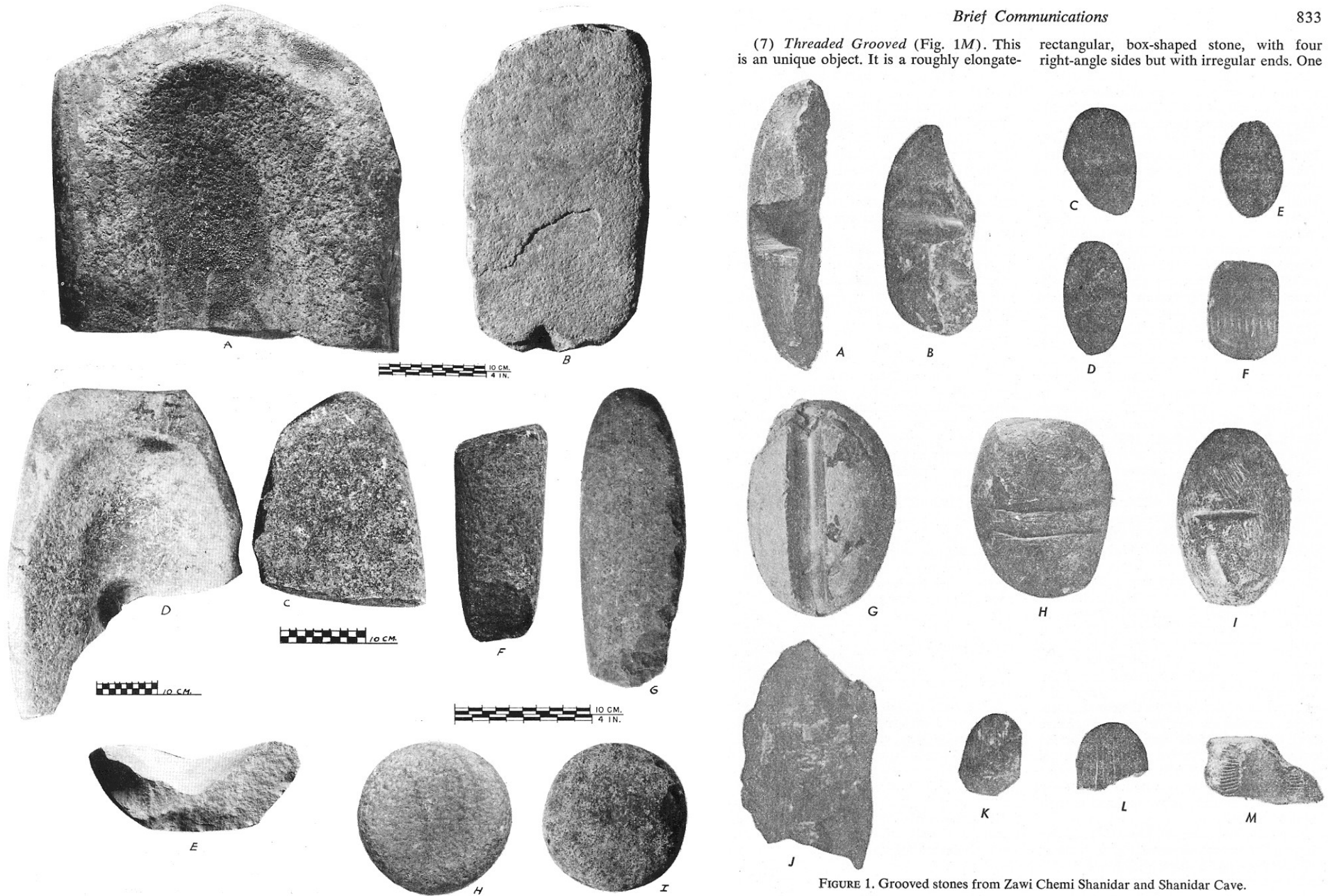


FIGURE 1. Grooved stones from Zawi Chemi Shanidar and Shanidar Cave.

PLANCHE I. — Zawi Chemi Milling Tools : A, Trough Querns; B, C, Flat Querns; D, E, Combination Quern-Mortars; F, G, Ponders; H, I, Mullers.

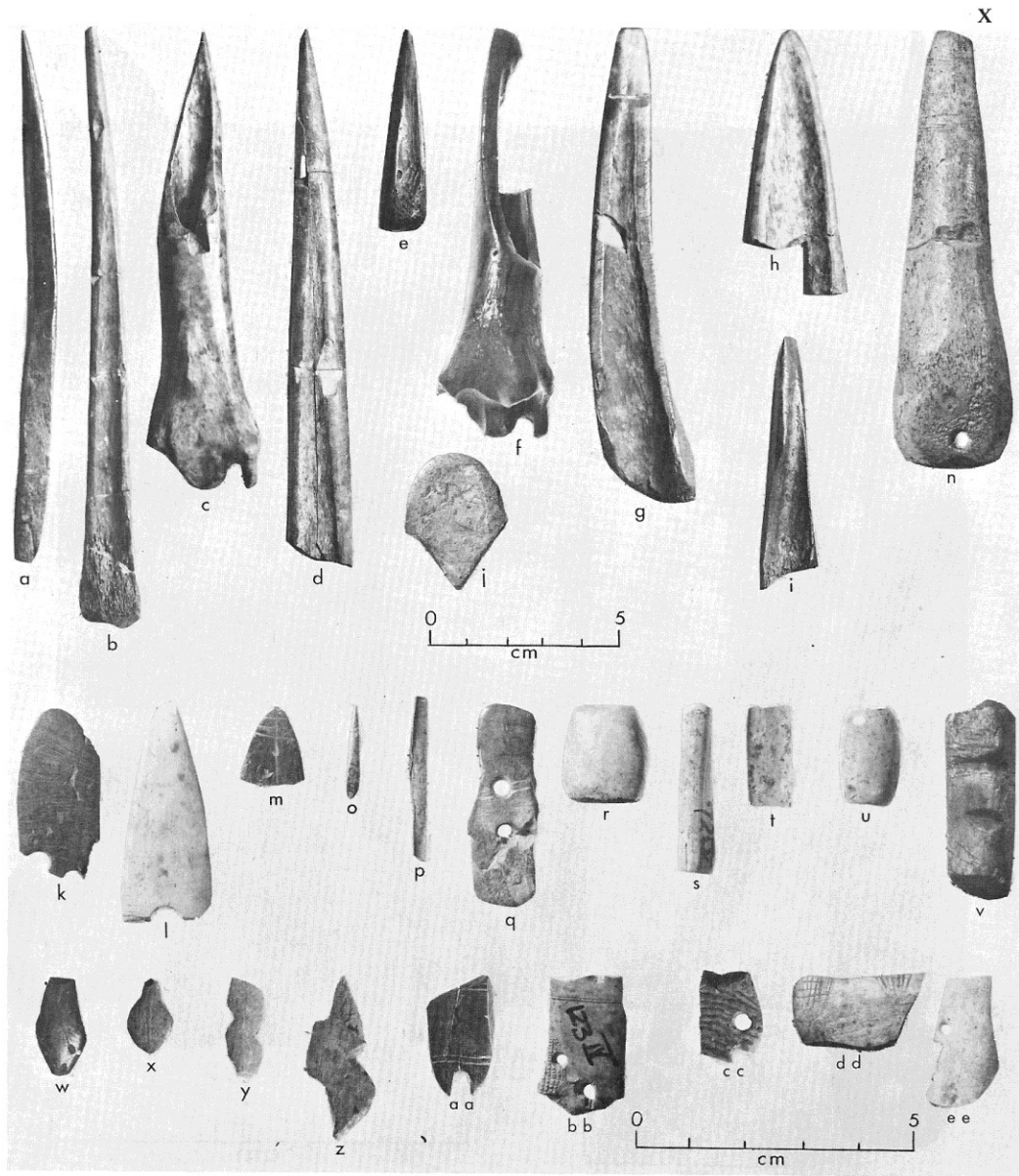
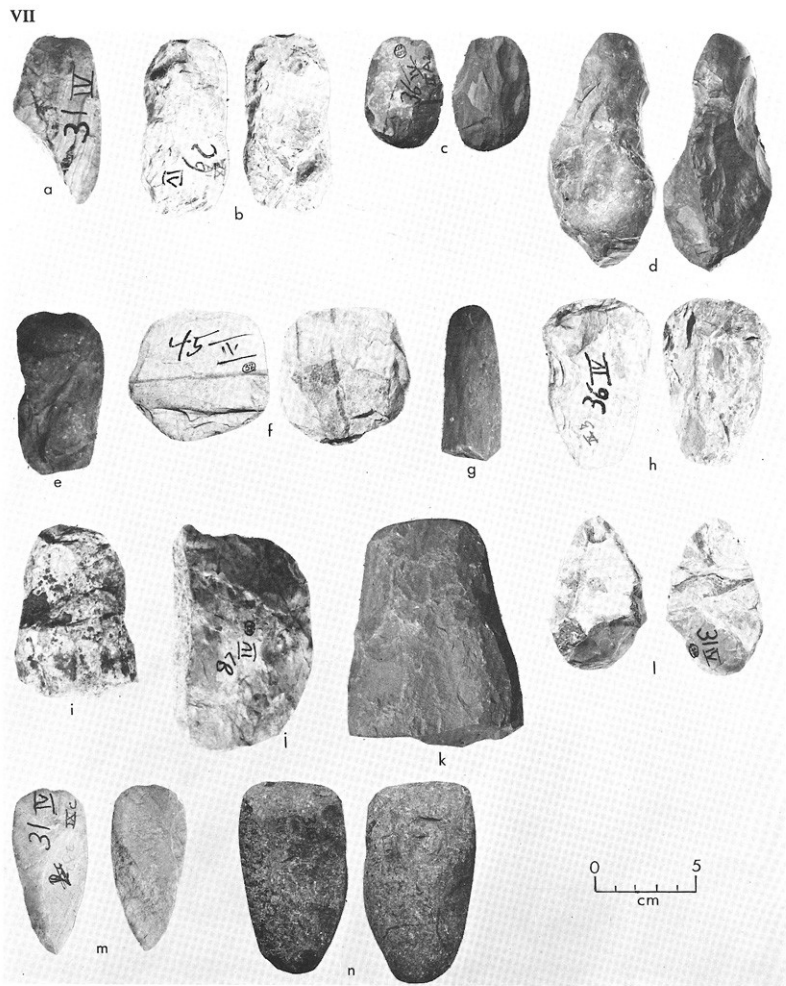
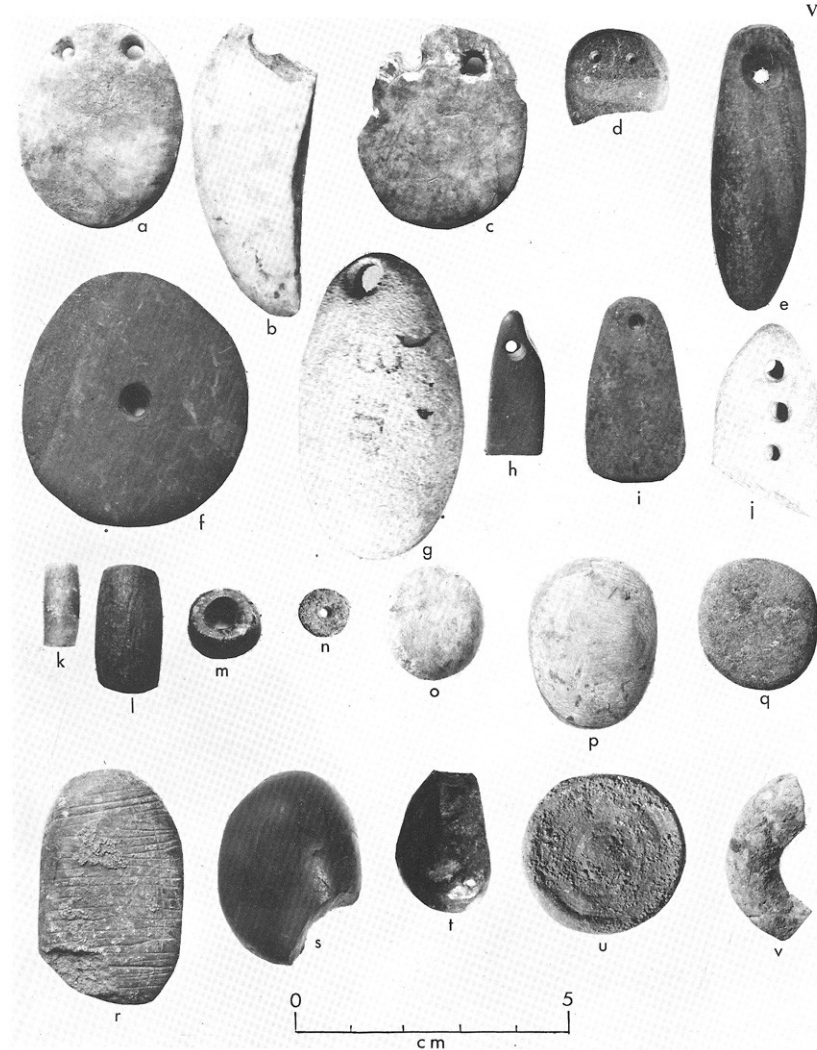


Plate 10. Bone Objects

a-e, Awls. f-i, Tools with polished, non-piercing ends. j, Spearhead. k-m, Flat pointed tools.
n, o, V-shaped tools. p, Thin pointed bone piece. q, Bone piece, possibly for a winged object.
r-v, Beads. w-ee, Decorated bone pieces.



a-g, Chipped celts with polished bits. h-l, Chipped celts with chipped bits. m,n, Allover smoothed/polished celts.



a-j, Pendants. k-n, Beads. o-q, Discs. r, Engraved stone. s,t, Taconite pebbles. u,v, Invertebrate fossils.

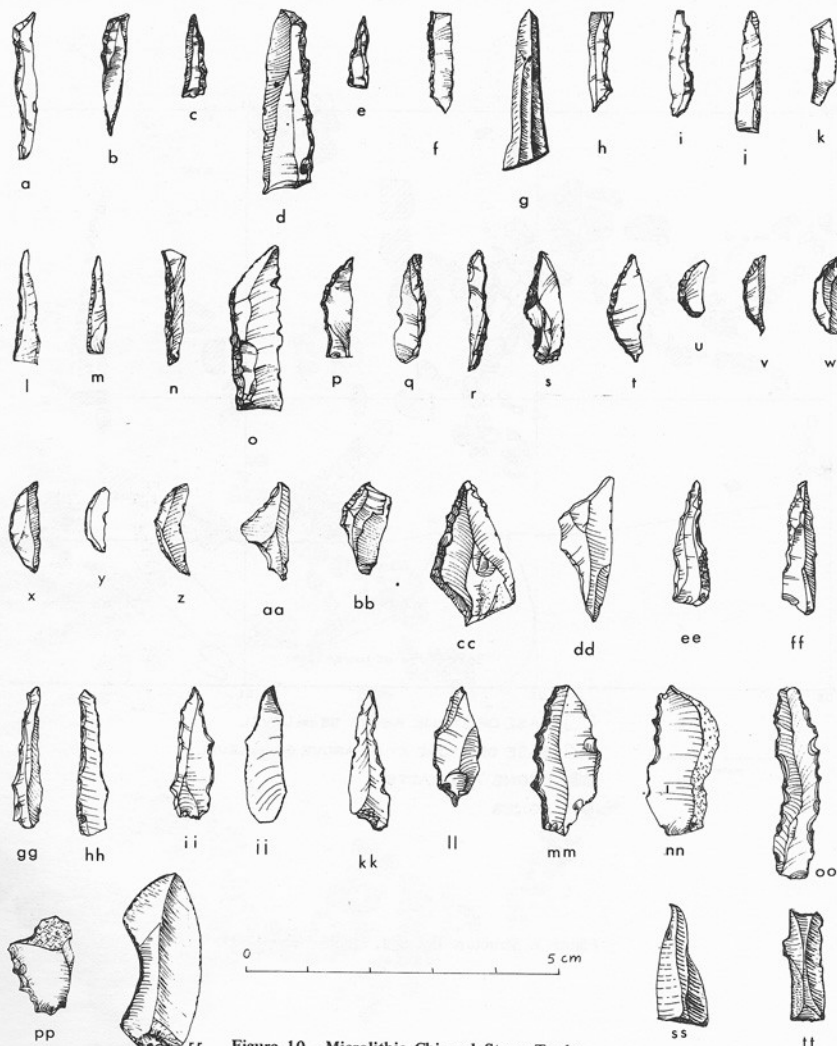


Figure 10. Microlithic Chipped Stone Tools

a-s, Backed blades. t-z, Lunates. aa,bb, Triangles. cc, Incomplete triangle. dd, Trapezoid. ee-kk, Borers. ll, Burin. mm-pp, Denticulates. qq, Notched piece. rr,ss, Truncated pieces.

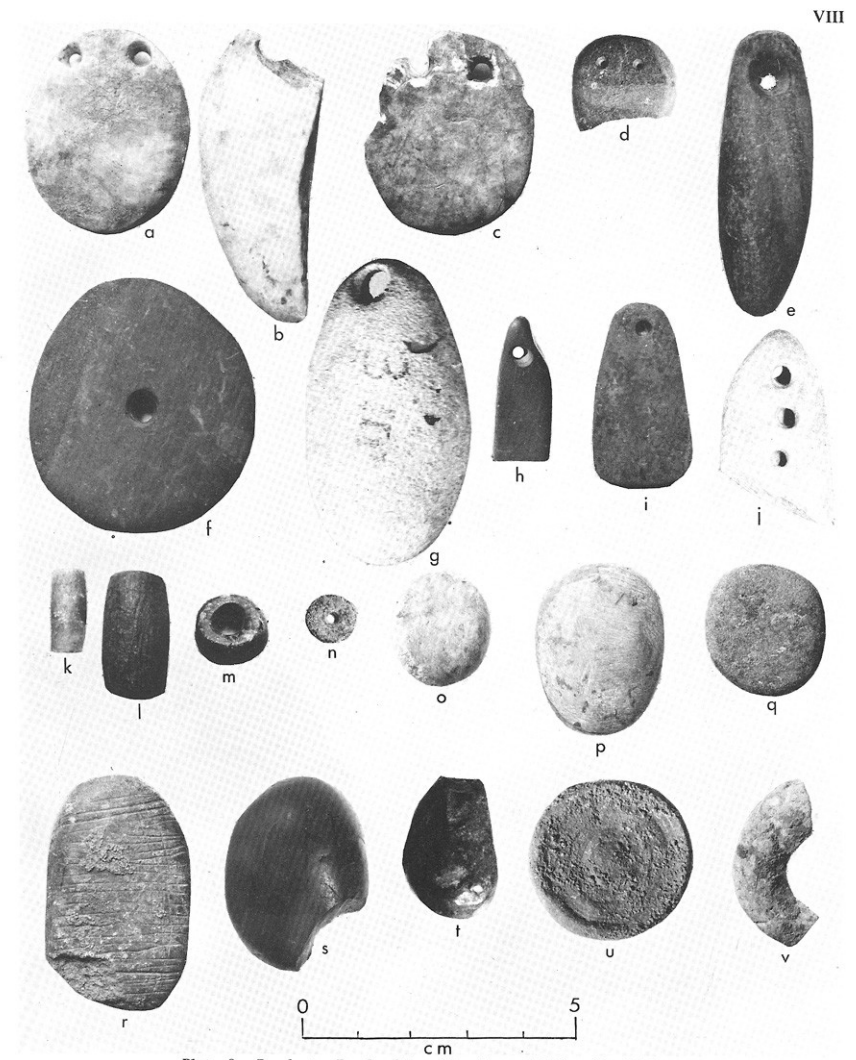


Plate 8. Pendants, Beads, Discs, Fossils, and Other Small Miscellany

a-j, Pendants. k-n, Beads. o-q, Discs. r, Engraved stone. s,t, Taconite pebbles. u,v, Invertebrate fossils.

Zawi Chemi lithics and stone objects

Karim Shahir

- Excavated in ca. late 1950s by Bruce Howe
- Dug as example of “Era of incipient agriculture”

PREHISTORIC
INVESTIGATIONS IN
IRAQI KURDISTAN



*BY ROBERT J. BRAIDWOOD
AND
BRUCE HOWE*

WITH CONTRIBUTIONS BY HANS HELBAEK · FREDERICK R.
MATSON · CHARLES A. REED · HERBERT E. WRIGHT, JR.

THE ORIENTAL INSTITUTE OF THE UNIVERSITY OF CHICAGO
STUDIES IN ANCIENT ORIENTAL CIVILIZATION · NO. 31
THE UNIVERSITY OF CHICAGO PRESS · CHICAGO · ILLINOIS

1960



Fig. 8. View east over operation I at Karim Shahir, showing central portion of exposed shallow occupation floor of scattered stones and close-set rocky "pavement." Grid A and the extension constitute most of view, with small parts of grids B and F appearing along right edge of picture. Upper half of photograph shows eastern edge of excavations, delimited to left by curving natural edge of scarp and to right by straight line of northern end of step.



Fig. 9. View east over operation I at Karim Shahir, showing southernmost part of exposed occupation floor with scattered stones. Grids F and G are in foreground, grids B and C in background, with straight edge of north-south step at top of picture. The turf later removed in the excavation of the extension appears along left side of view.

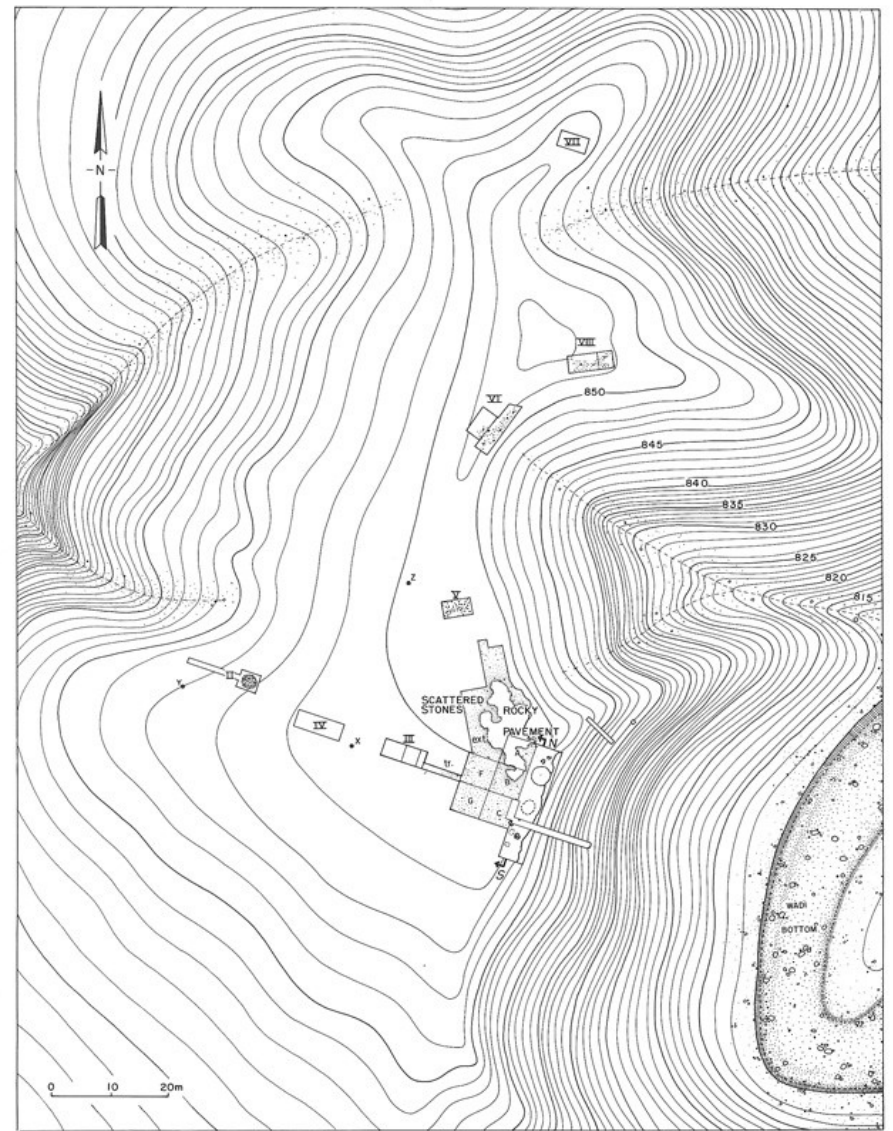


Fig. 7. Plot plan of Karim Shahir, showing location of excavation operations and principal features exposed: major operation I, including the 20-m north-south step and pits, the adjacent 5-m² grids A, B, C, F, G and the extension (ext.) with rocky "pavement" and stone scatter, and the trench (tr.); minor operations II-VIII; and three unlabeled geological exposures (2 trenches and 1 pit) cut in eroded face of scarp into underlying sterile silts.

Karim Shahir

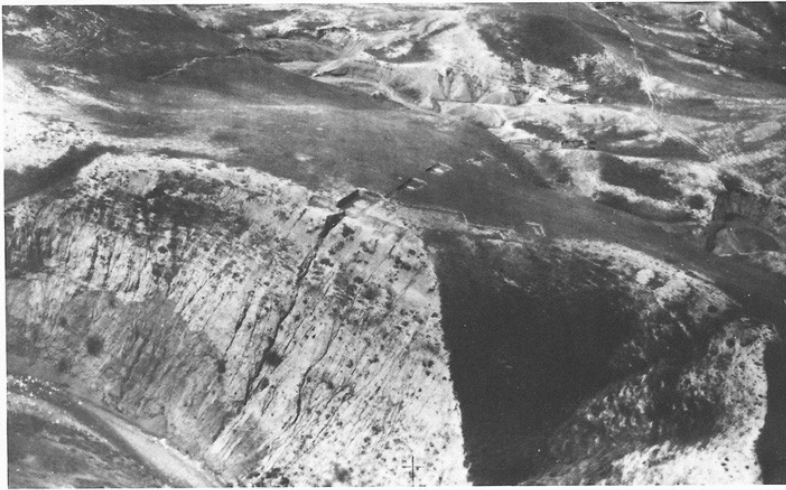
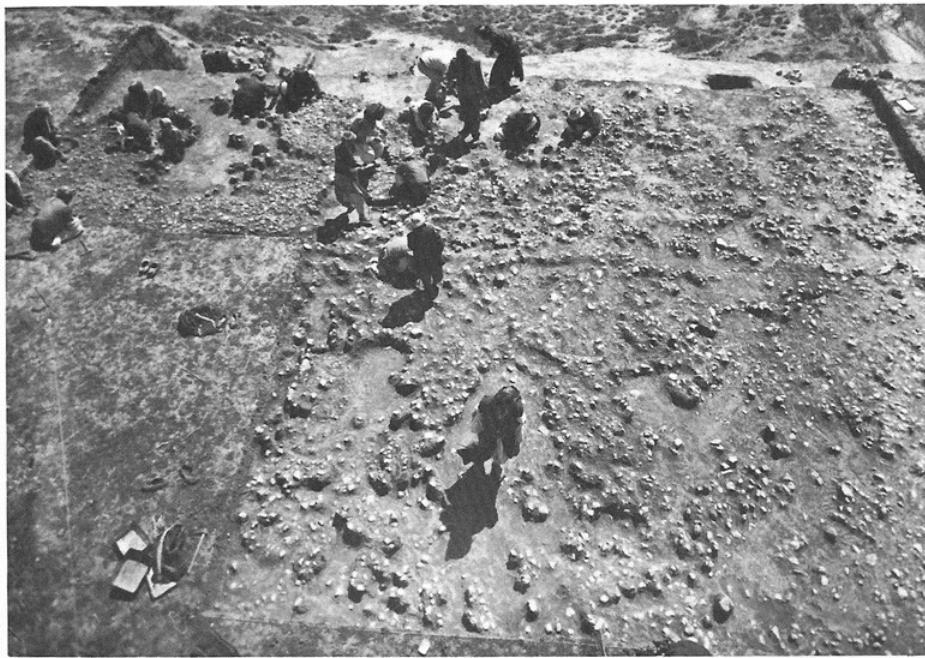


Fig. 3. Air view of Karim Shahr, looking west. Site covers much of grassy hilltop immediately above erosion scarp. Excavations visible along top edge of scarp and on hilltop. (Flight courtesy of the Iraq Petroleum Company, Ltd.)

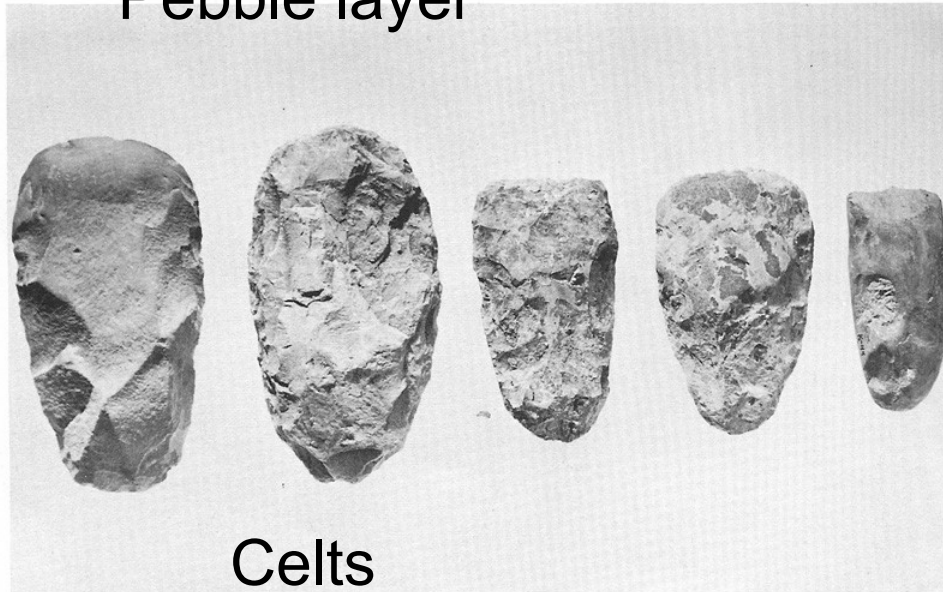


Fig. 4. Scarp and stream bed at Karim Shahr, looking north-northwest. Step cut along eroding scarp edge on skyline marked by figures of workmen. At lower right, stream bed of the Cham-Gawra, some 40 m below scarp edge.

Topographic setting of Karim Shahr



A
Pebble layer



B
Celts

A. Scatter of cracked limestone pebbles at Karim Shahir. B. Chipped flint celts with polished bits, from Karim Shahir. Scale, 2:3



Coarse ground stone pestles (1-2), muller or grindstone (3), subcuboid hammer (4), grooved rubbing stones (5-6), and fragment of decorated palette or grindstone (7), clay figurine (8), finely ground stone beads and pendants (9-14), marble rings or bracelets (15-16), all from Karim Shahr. Scales, 2:3 (1-7) and 1:1 (8-16)

Ground and polished stone objects

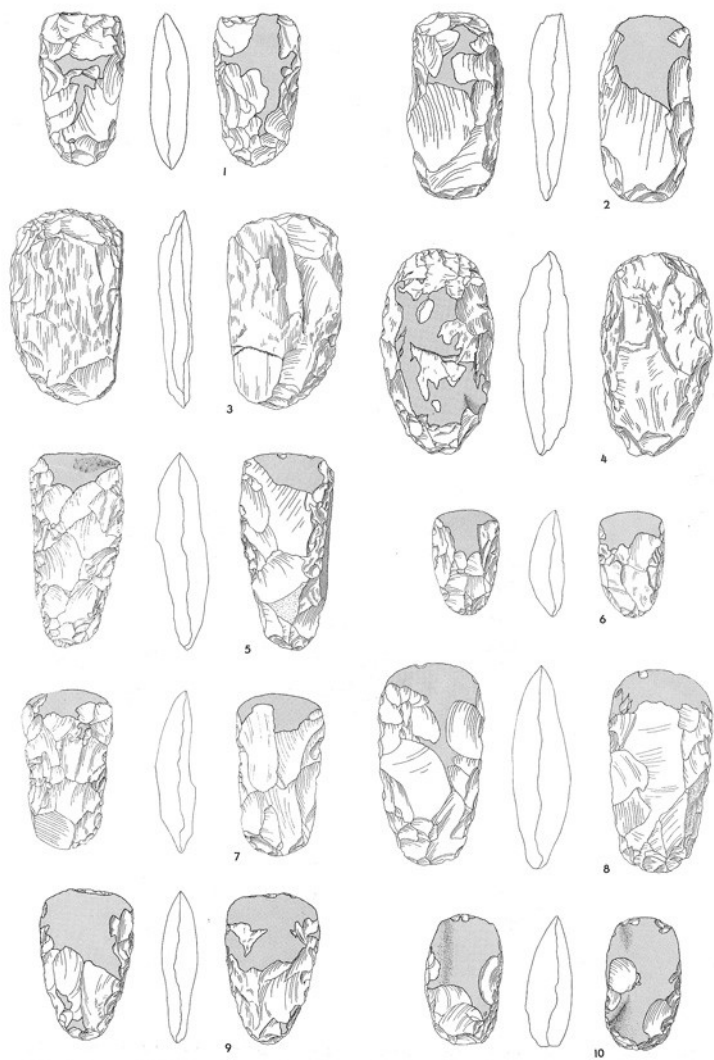


Fig. 13. Karim Shahir chipped and polished celts: adze/hoes, 1-4, 6-7; adze/hoes or axes, 5; axes, 8-10. Scale 1:2.

Celt varieties

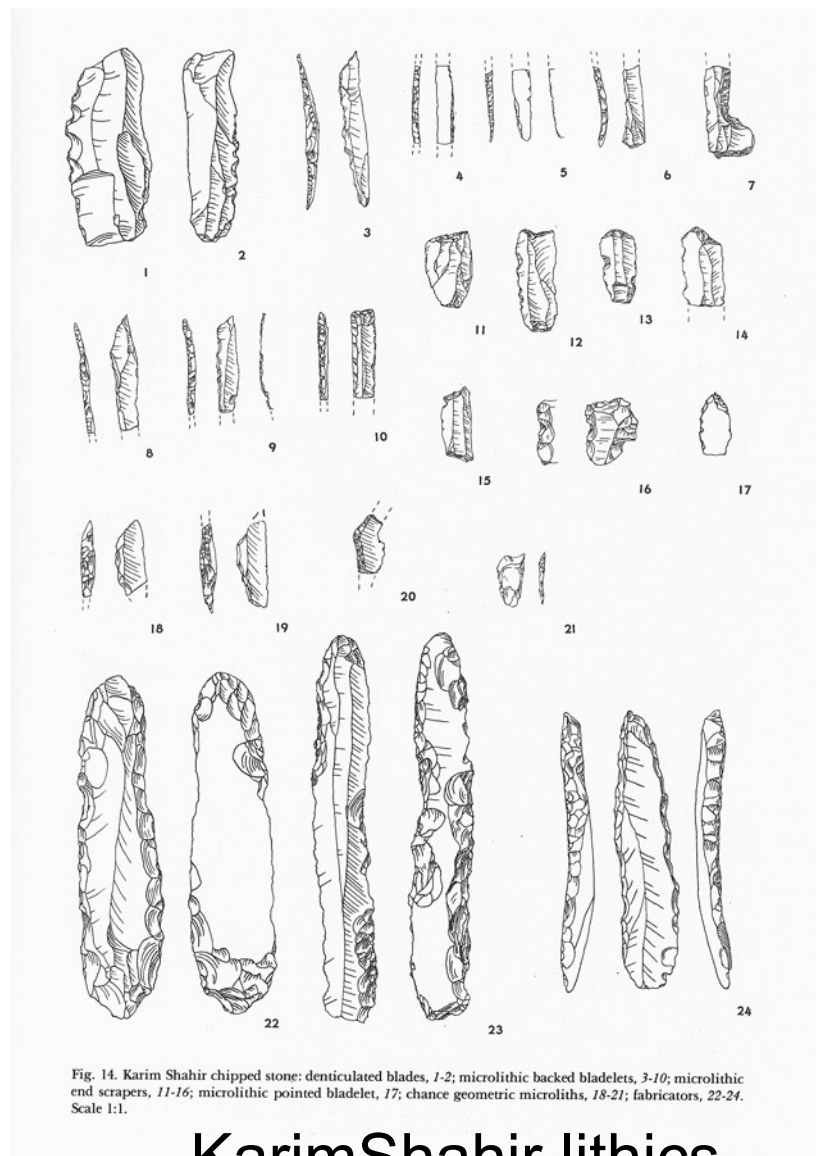


Fig. 14. Karim Shahir chipped stone: denticulated blades, 1-2; microlithic backed bladelets, 3-10; microlithic end scrapers, 11-16; microlithic pointed bladelet, 17; chance geometric microliths, 18-21; fabricators, 22-24. Scale 1:1.

KarimShahir lithics

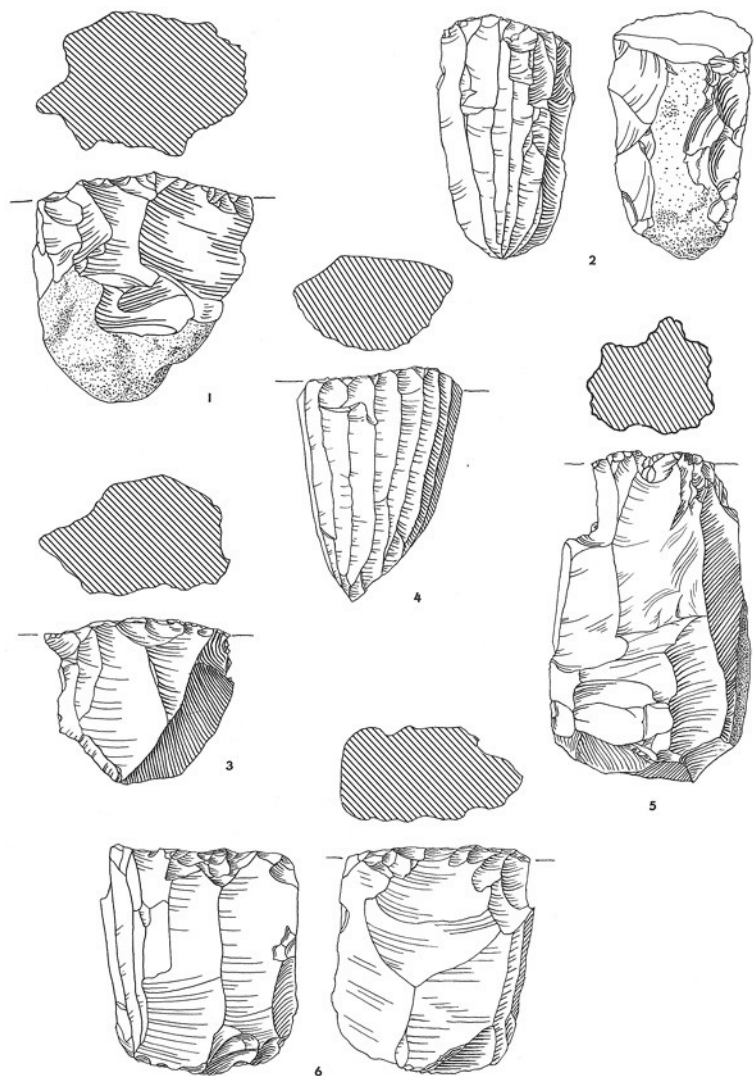


Fig. 20. Karim Shahir chipped stone: partial pyramidal flake cores, 1,3; partial pyramidal blade cores, 2,4; fully pyramidal flake cores, 5-6. Scale 1:1.

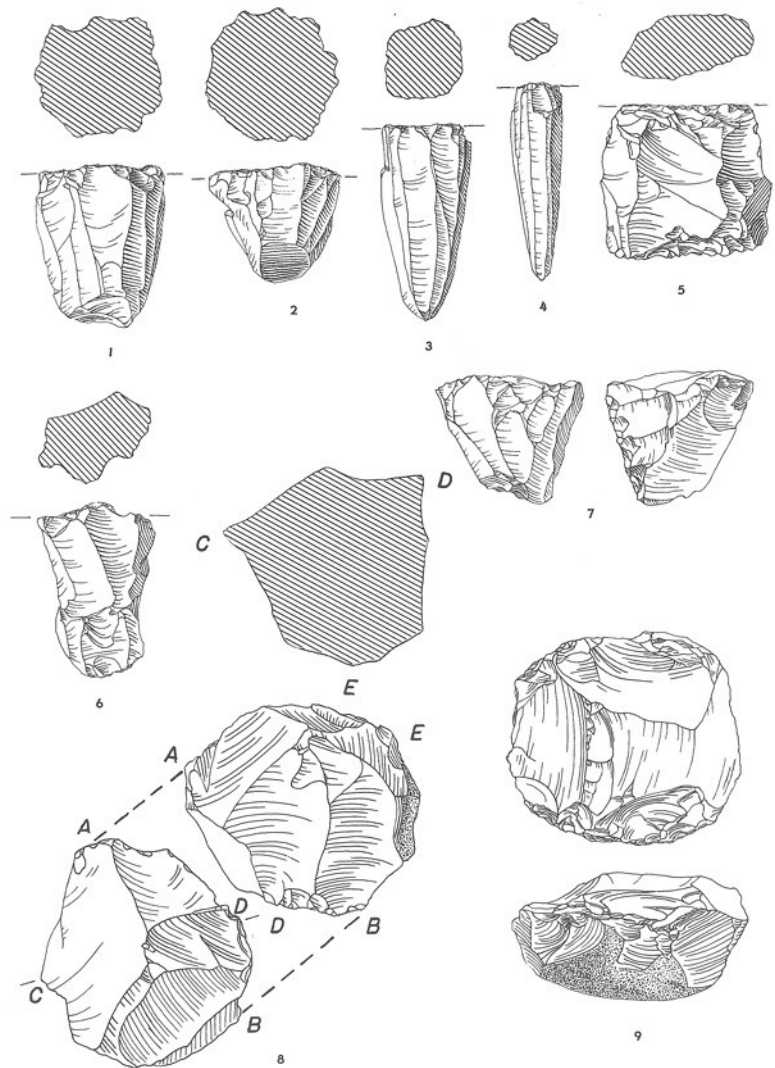


Fig. 21. Karim Shahir chipped stone: fully pyramidal blade cores, 1-4; bipolar cores, 5-7; polyhedral/amorphous core, 8; discoid core, 9. Scale 1:1

Karim Shahir unidirectional cores

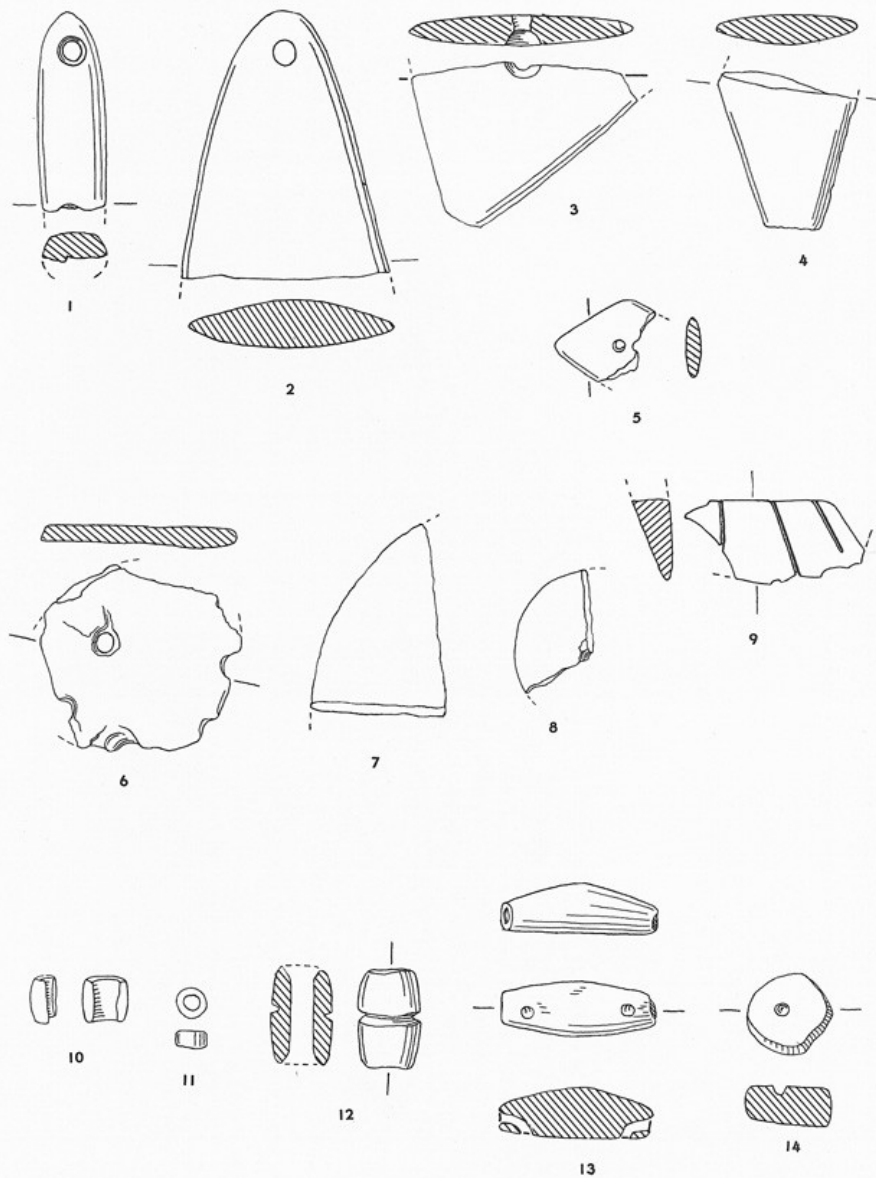


Fig. 11. Karim Shahr ground stone: fragmentary pendants, 1-2; fragmentary plaques, 3-9; beads, 10-13; bead rough-out, 14. Scale 1:1.

Decorative objects

Asiab

- Excavated in 1960 by Bruce Howe
- On river bank near Kermanshah, Iran
- Pit structure, ~5 m in diameter
- Contained bones of large wild goats
- Lithics similar to Karim Shahir
- No celts
- No grinding stones
- Probable hunters' camp

