

**A**

1 2 1 2 3 4 1 2 3 4 5 6 7 8 1 2 3 4 *etc.*

**B**

1 2 3 4 5 6 1 2 3 4 5 *etc.* 1 2 3 4 5 6 1 2 3 4 5 6 7 *etc.*

**C**

1 2 3 4 5 6 7 8 9 *etc.* 1 2 3 4 5 6 *etc.*

**C**

1 2 1 2 1 2 3 4 1 2 1 2 3 4 5 1 2 3 4 5 *etc.*

**D Grave. E Allegro. F G**

1 2 3, 1 2 3, 1 2 3, 1 2 3

**H I L**

1 2 3, 1 2 3, 1 2 3, 1 2 3, 1 2 3, 1 2 3, 1 2 3, 1 2 3, 1 2

**M N O**

1 2 1 2 1 2 3 4 1 2 3 1 2 3

**P Q R**

1 2, 1 2 3 4, 1 2 *etc.*

**S T X**

1 2 3 1 2 3 4 *etc.* 1 2 1 2 3 4 *etc.* 1 2 1 2 3 4 1 1 1 2 3 *etc.*

**V X**

1 2 3, 1 2 3, 1 2 3, 1 2 3, 1 2 3, 1 2 3

Y Z AA BB

A musical staff containing four sections of music labeled Y, Z, AA, and BB. Each section is marked with a vertical bar line. Fingerings are indicated by numbers 1-4 above notes. There are asterisks below the staff: one under Y, one under Z, one under AA, and two under BB.

CC *Curante.*

A musical staff for section CC, titled "Curante." It features a treble clef and a 3/4 time signature. The music consists of a series of eighth and sixteenth notes. Fingerings are indicated above the notes. There are asterisks below the staff: one under the first measure, one under the second measure, one under the fifth measure, and one under the eighth measure.

DD *Gigue.*

A musical staff for section DD, titled "Gigue." It features a treble clef and a 6/8 time signature. The music is characterized by a rhythmic pattern of eighth and sixteenth notes. Fingerings are indicated above the notes. There are asterisks below the staff: one under the first measure, one under the second measure, one under the fifth measure, two under the eighth measure, and three under the ninth measure.

A musical staff with notes and fingerings. There are asterisks below the staff: two under the first measure, three under the second measure, three under the third measure, three under the fourth measure, two under the fifth measure, and three under the sixth measure.

EE *Bourée.* FF GG

A musical staff containing three sections: EE (titled "Bourée."), FF, and GG. EE has a treble clef and a 3/4 time signature. FF and GG have a treble clef and a 3/4 time signature. Fingerings are indicated above notes. There are asterisks below the staff: three under EE, three under FF, and three under GG. There are also 't' marks below the staff under the first measure of FF and the first measure of GG.

HH *Menuet.*

A musical staff for section HH, titled "Menuet." It features a treble clef and a 3/4 time signature. The music is a simple melody with fingerings indicated above notes.

II

A musical staff for section II. It features a treble clef and a 3/4 time signature. The music consists of a series of eighth and sixteenth notes with fingerings indicated above notes.

LL MM NN

A musical staff containing three sections: LL, MM, and NN. LL has a treble clef and a 3/4 time signature. MM and NN have a treble clef and a 3/4 time signature. Fingerings are indicated above notes. There are asterisks below the staff: four under LL, one under MM, and one under NN.

OO PP *Gavotte.*

A musical staff containing two sections: OO and PP (titled "Gavotte."). OO has a treble clef and a 3/4 time signature. PP has a treble clef and a 3/4 time signature. Fingerings are indicated above notes. There are asterisks below the staff: one under OO and one under PP.

QQ

A musical staff for section QQ. It features a treble clef and a 3/4 time signature. The music consists of a series of eighth and sixteenth notes with fingerings indicated above notes. There are asterisks below the staff: one under the first measure, one under the second measure, one under the third measure, and one under the fourth measure.

*Allegro.*



*Adagio.*

RR



*Allegro.*



*Adagio.*

SS



TT

VV



XX

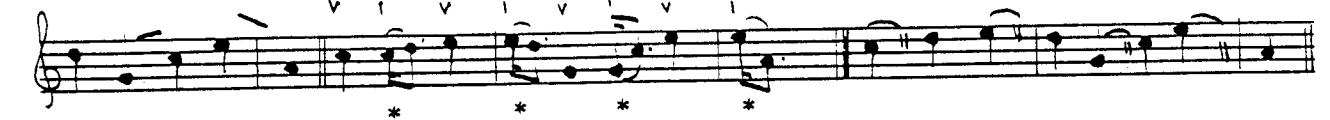
YY



ZZ



Aa



Bb

Cc



Dd

Ee



**Ff** 4  
Gg

**Hh** **li** **Li** **Mm**

**Nn**

**Oo**

**Pp** **Qq**

**Rr**

7 8 9

10 11 12 13 14

15 16 17 18

**Ss**

19 20

**Tt**

21 22 23 24

25 26

27 28 29

30 31 32 33 34

35 36

Cadentiae. č.I

č.II

č.III

~ tw tw tw

tw t tw

č.IV tw tw tw tw tw

č.V t t t č.VI t

t Yy t t

t t t tw t

Zz tw t t tw t tw

37 \* \* 38 \*

AAA

39 \* 40 \* 41 \*