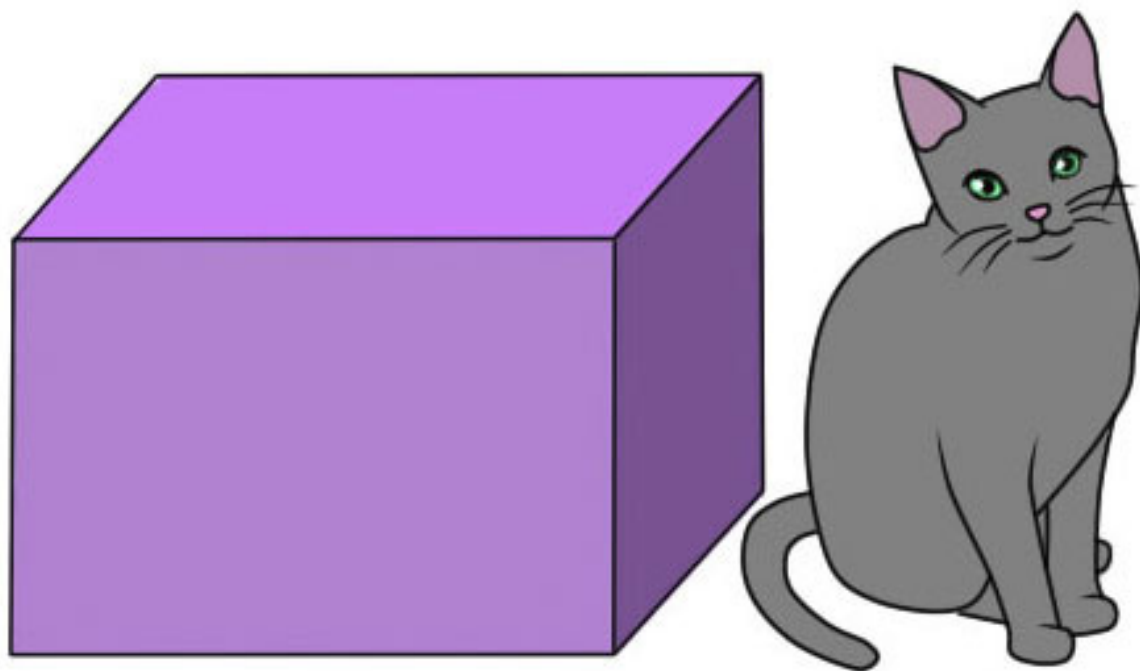


住





旁边

1 2 3 4 5  
6 7 8 9 10

号



楼



房间

1

么

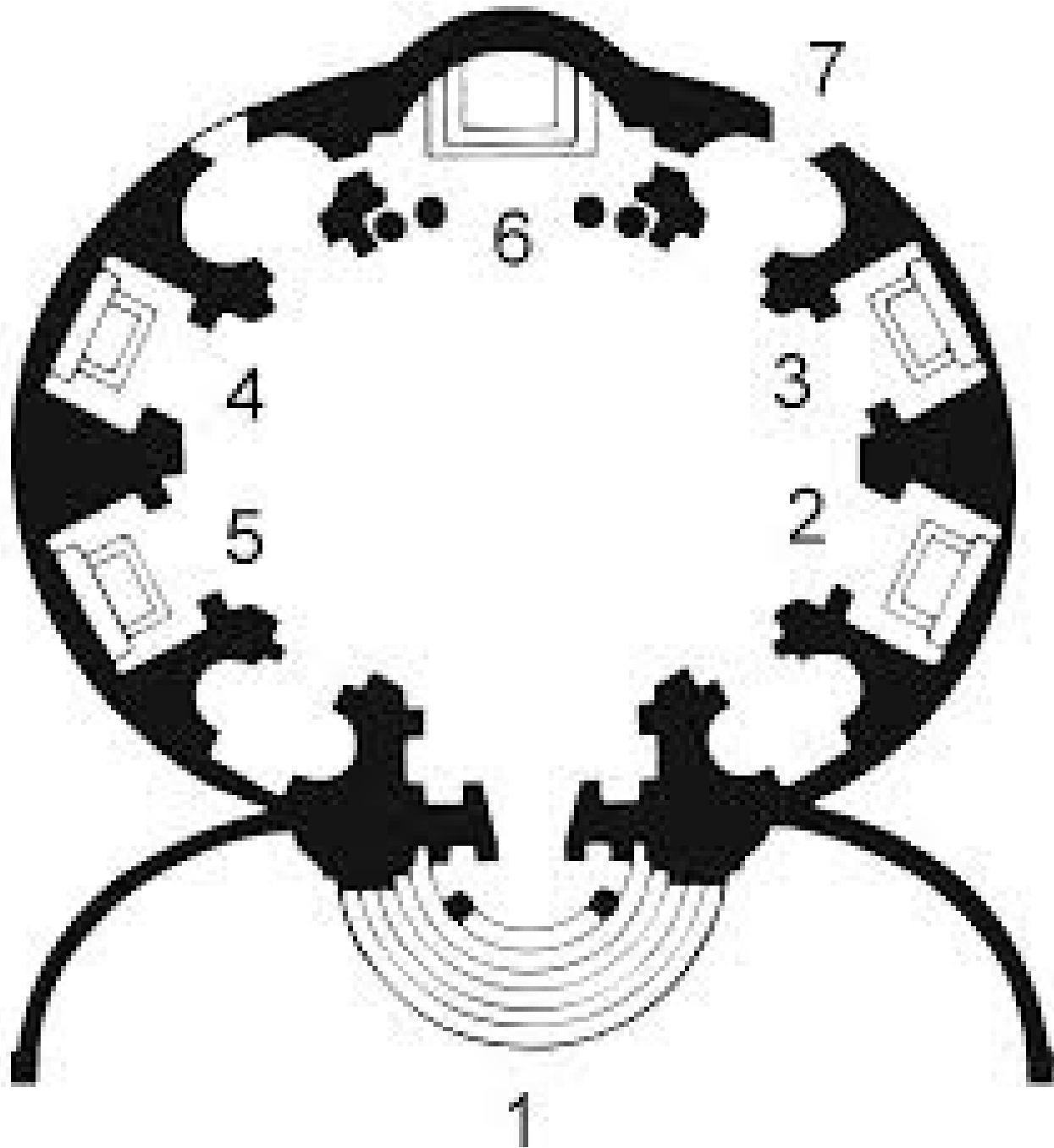


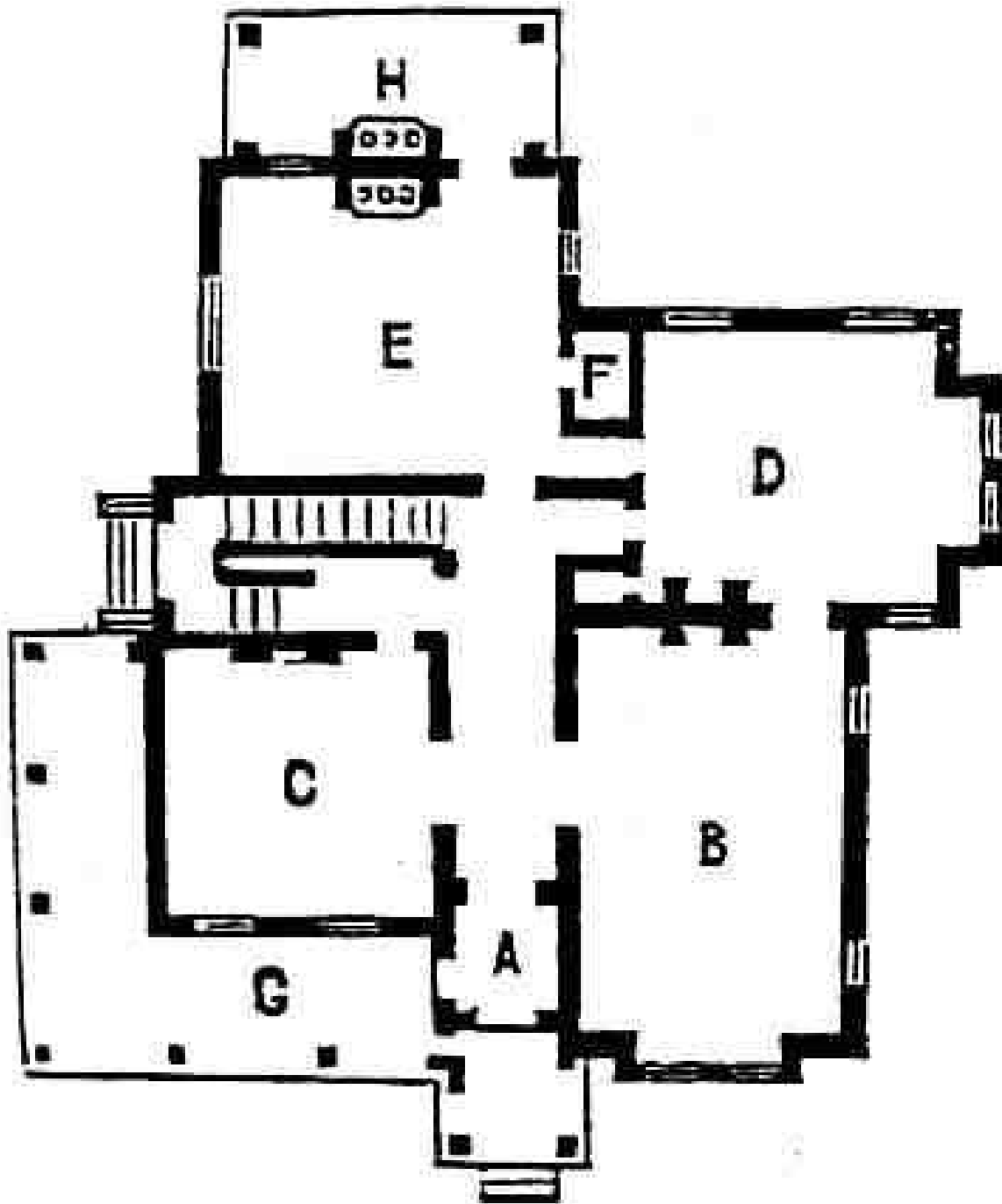
附近

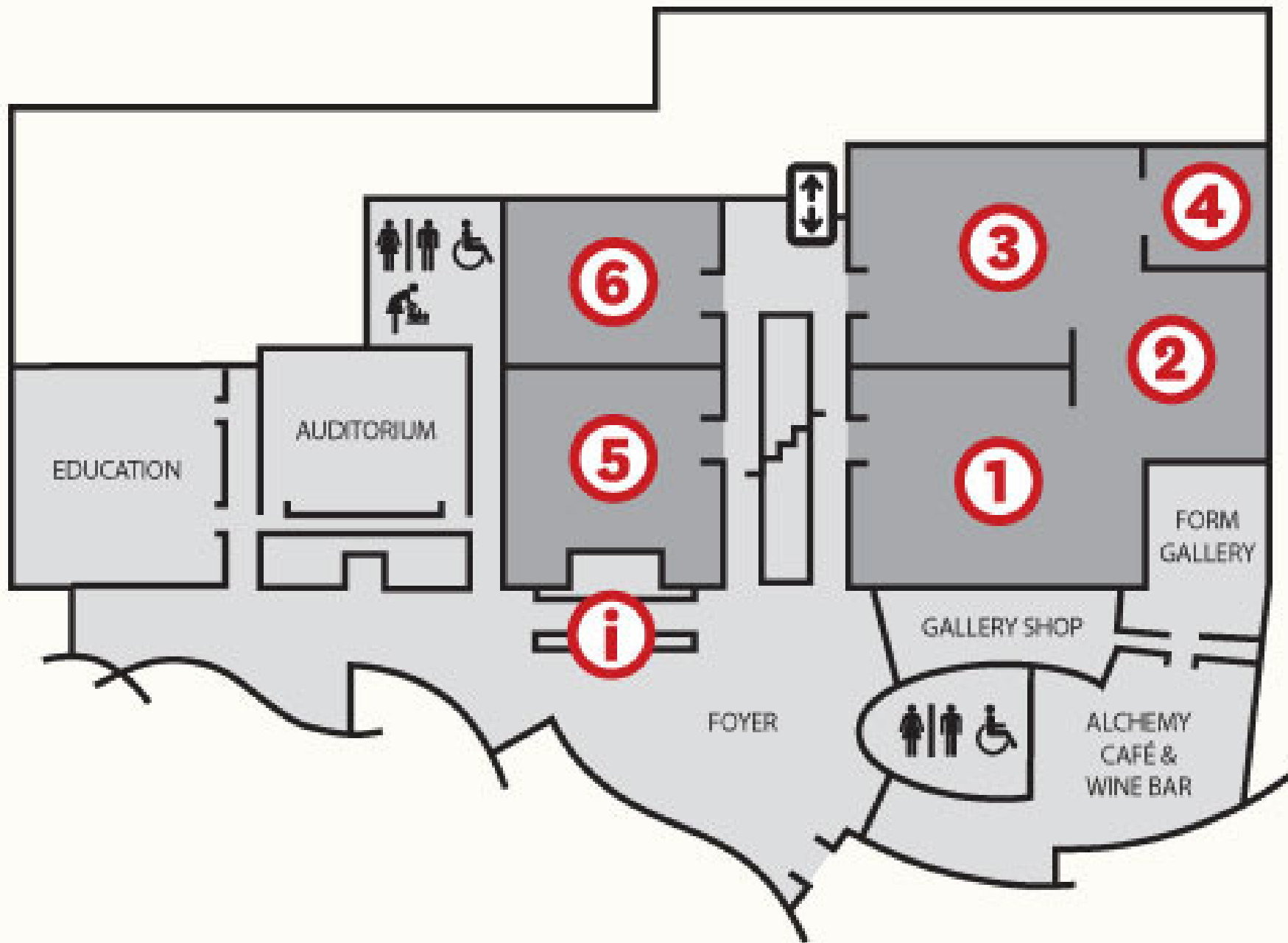


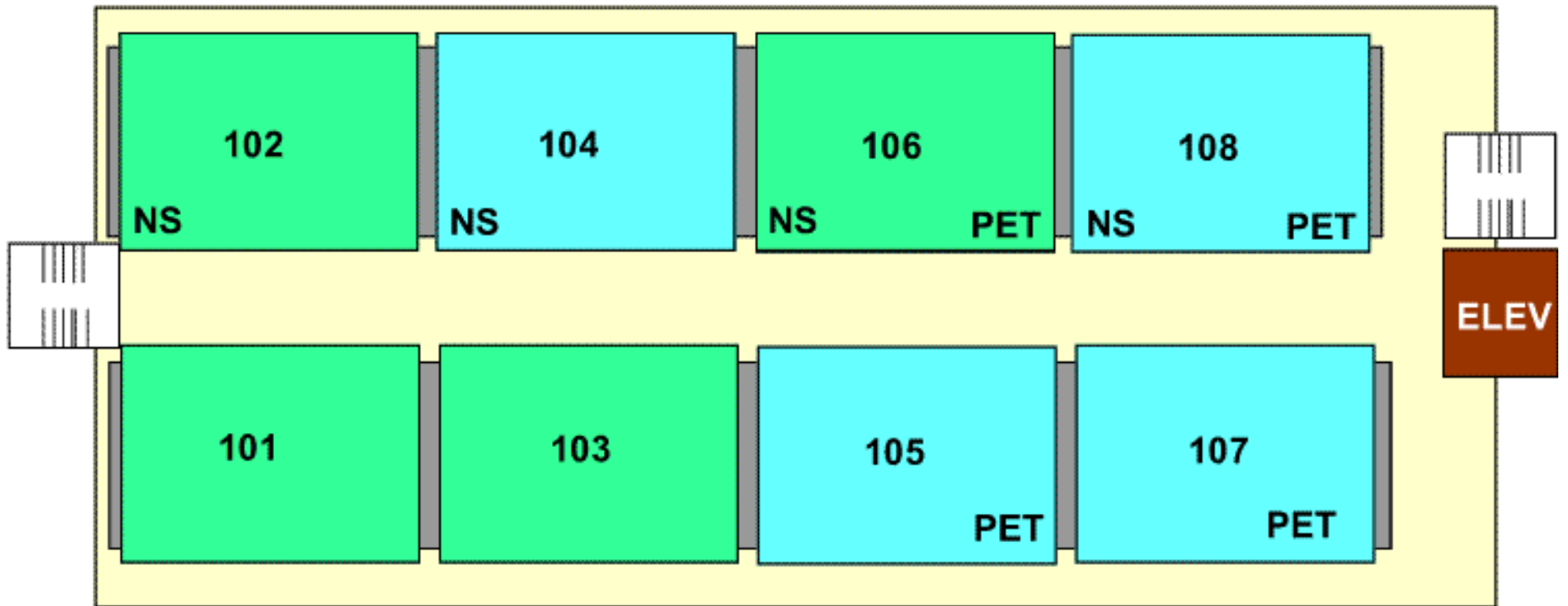
车站









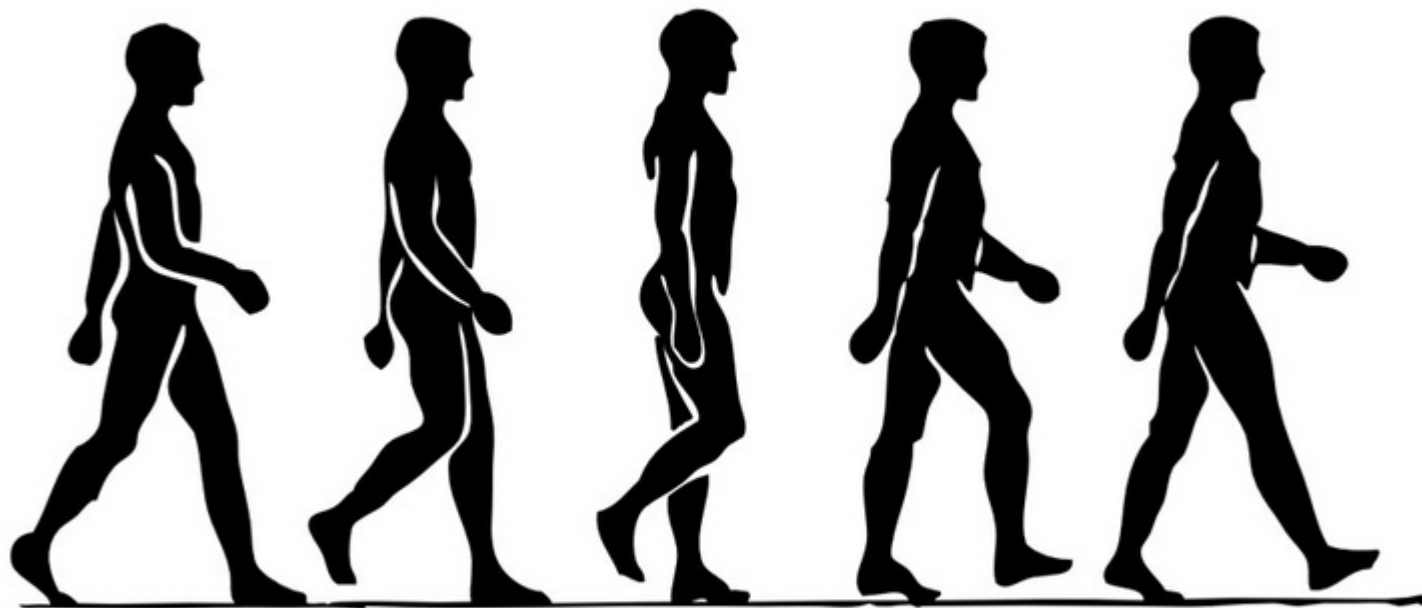




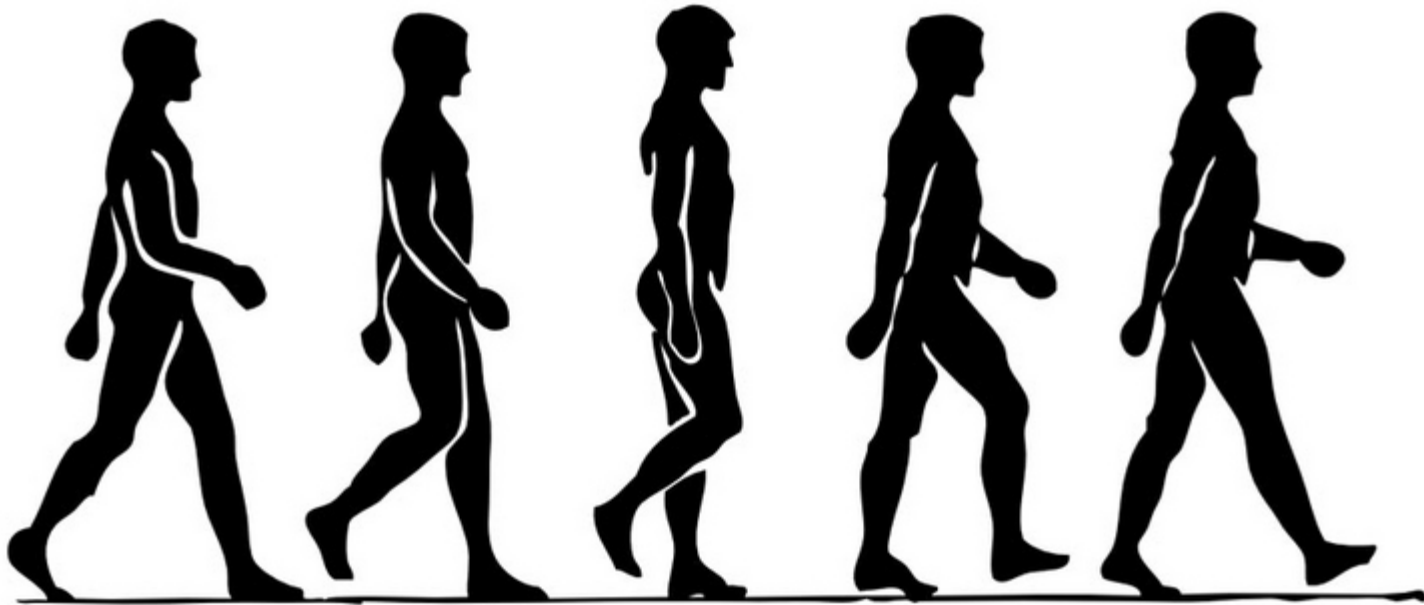
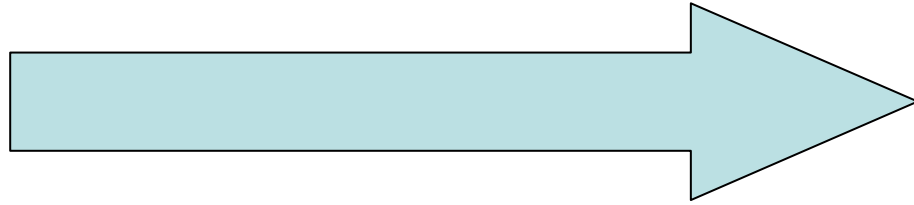
Česká pošta

邮局

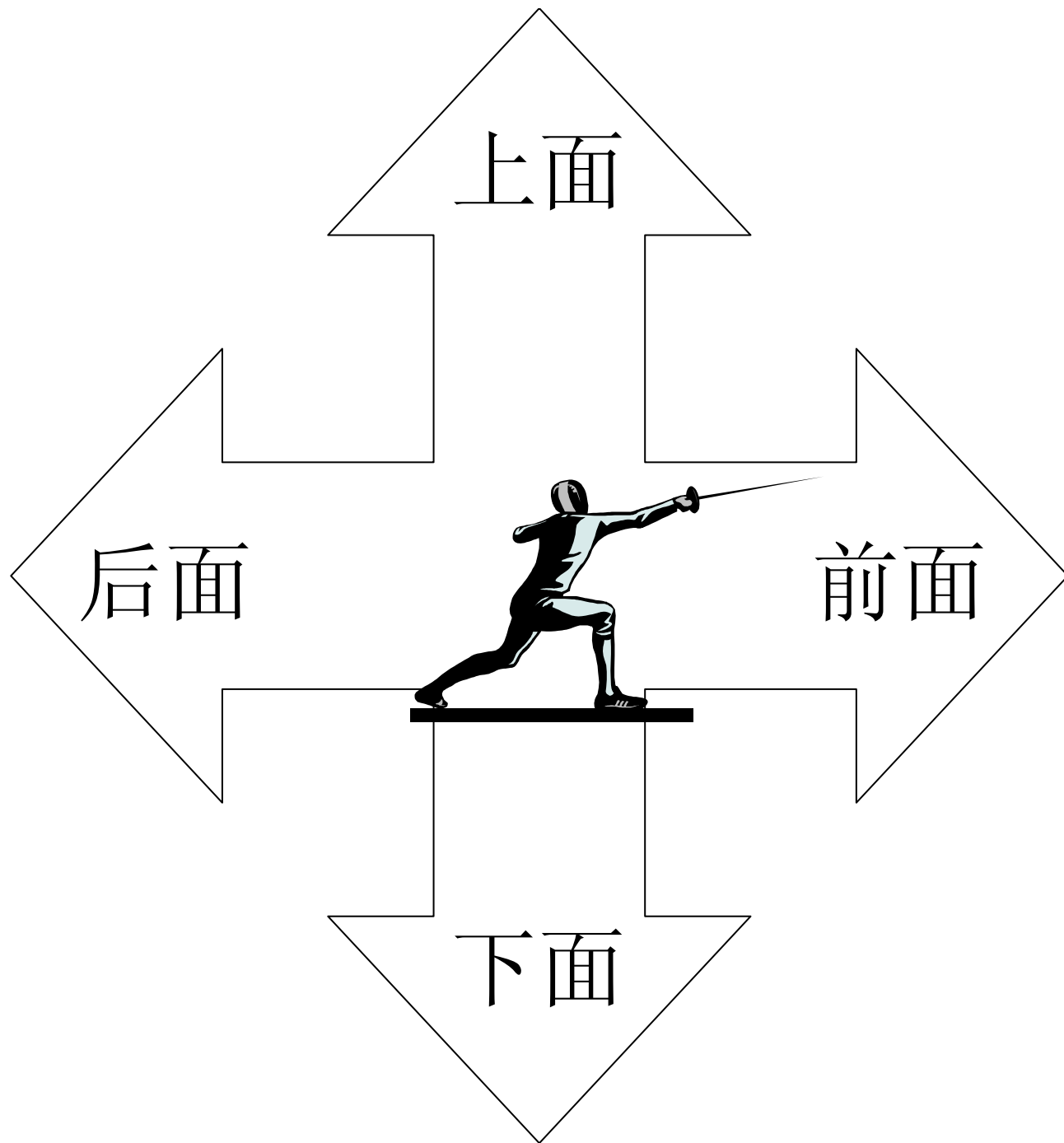




走



往前走



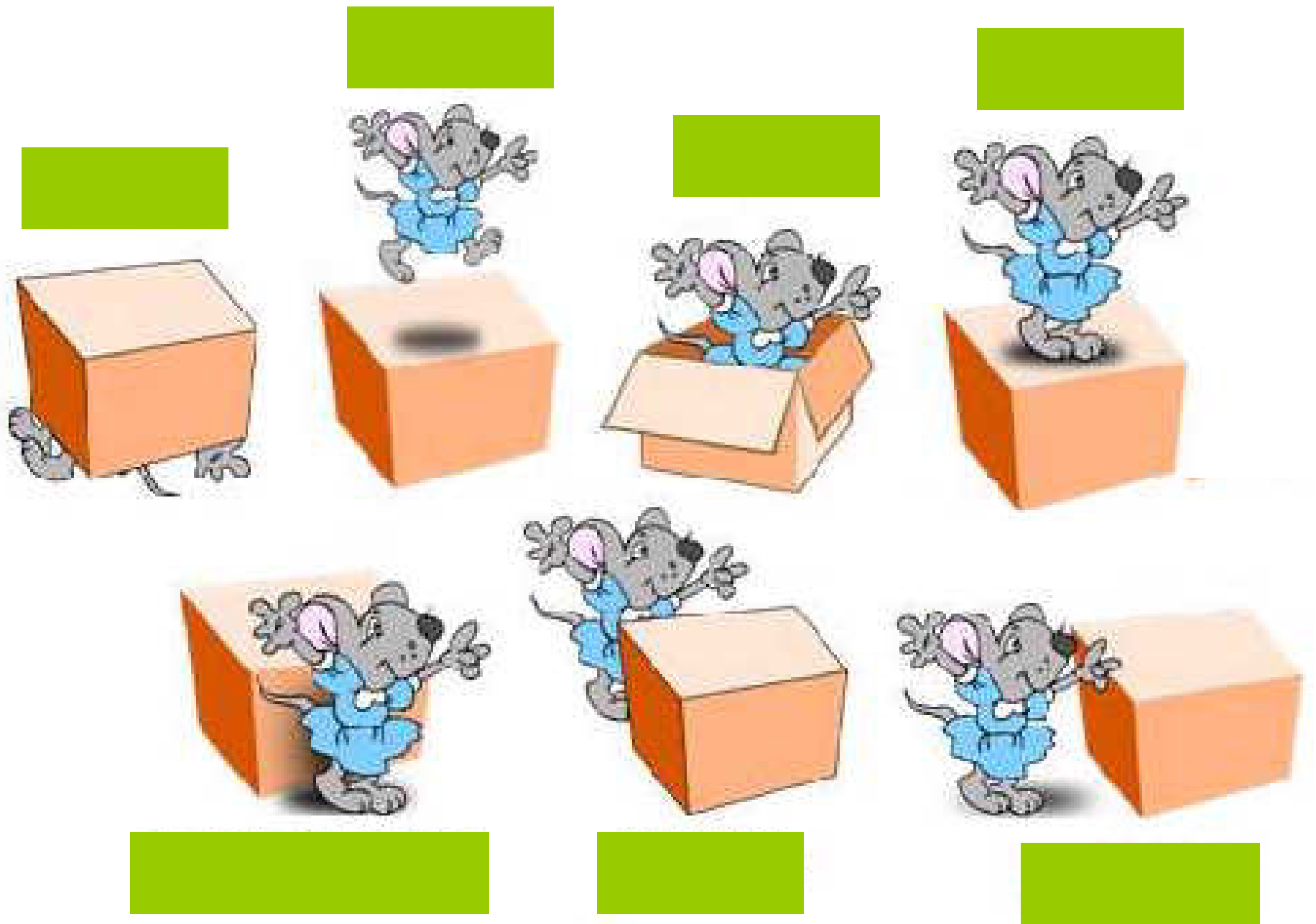
上面

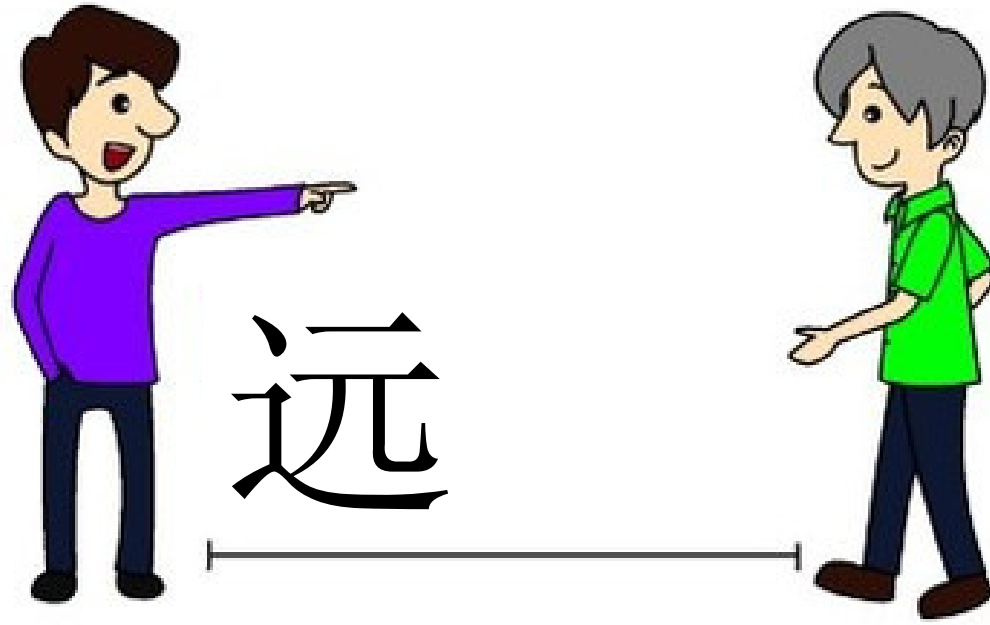
后面

前面

下面







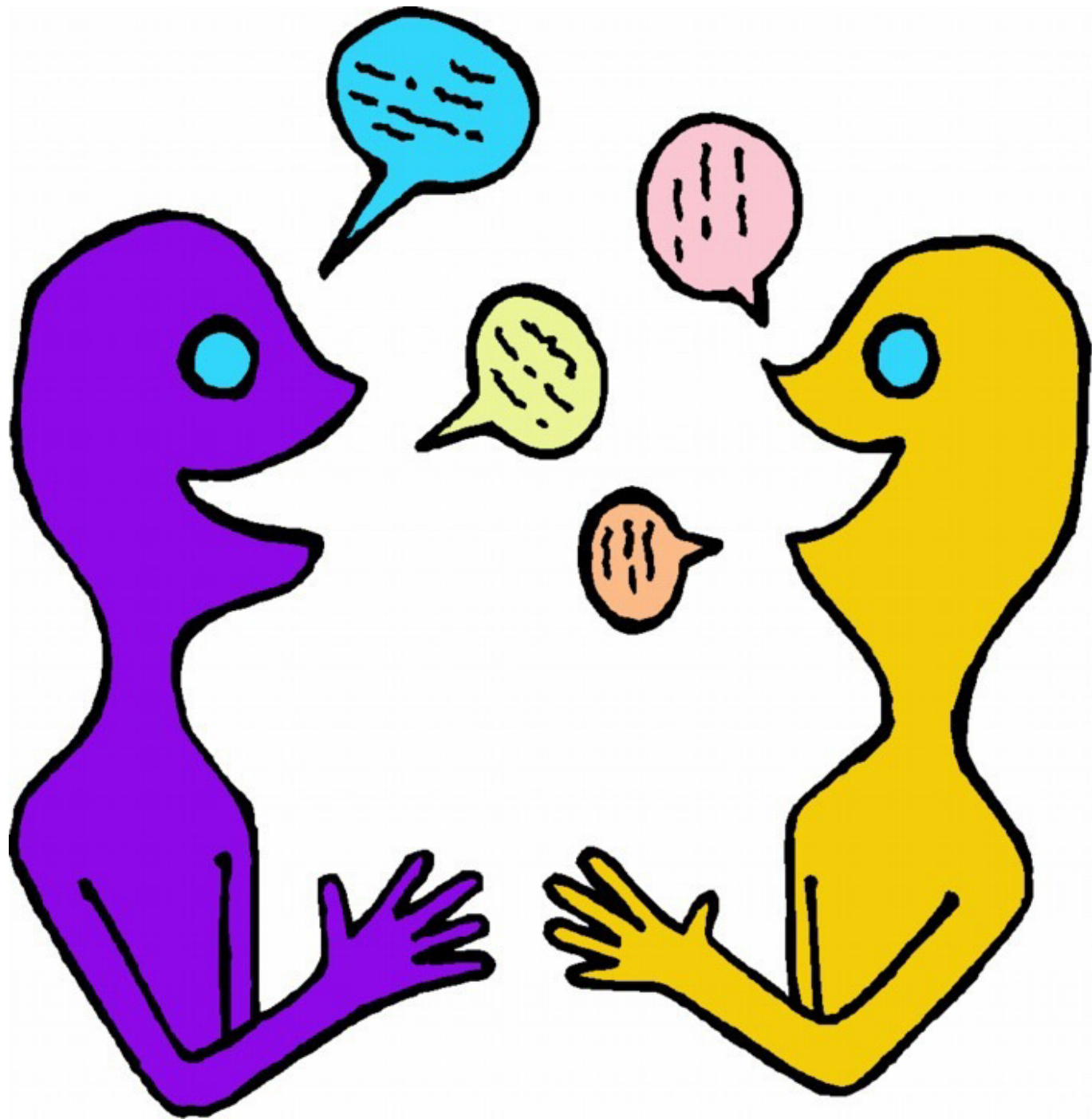


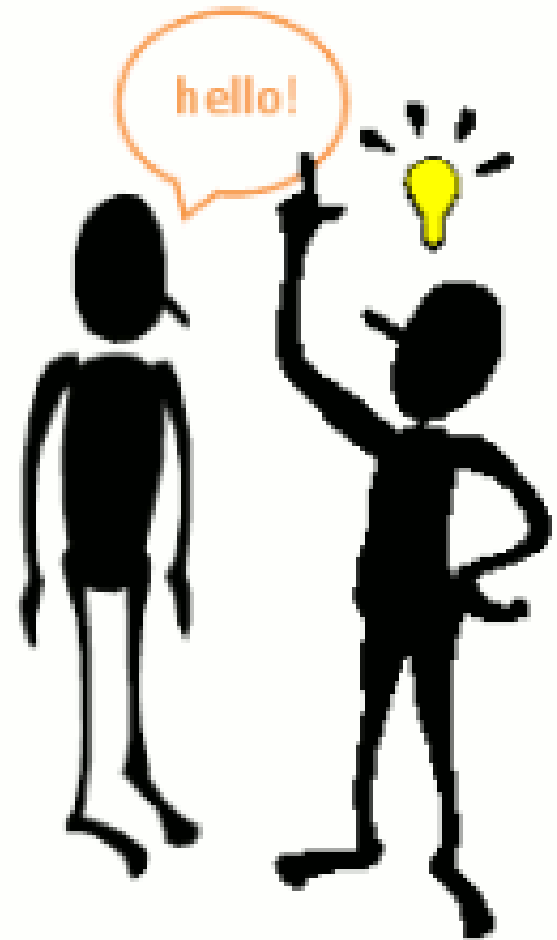
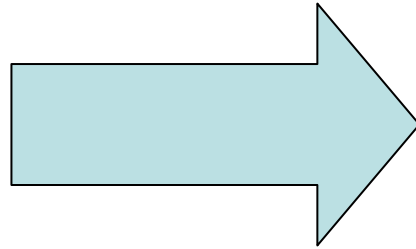
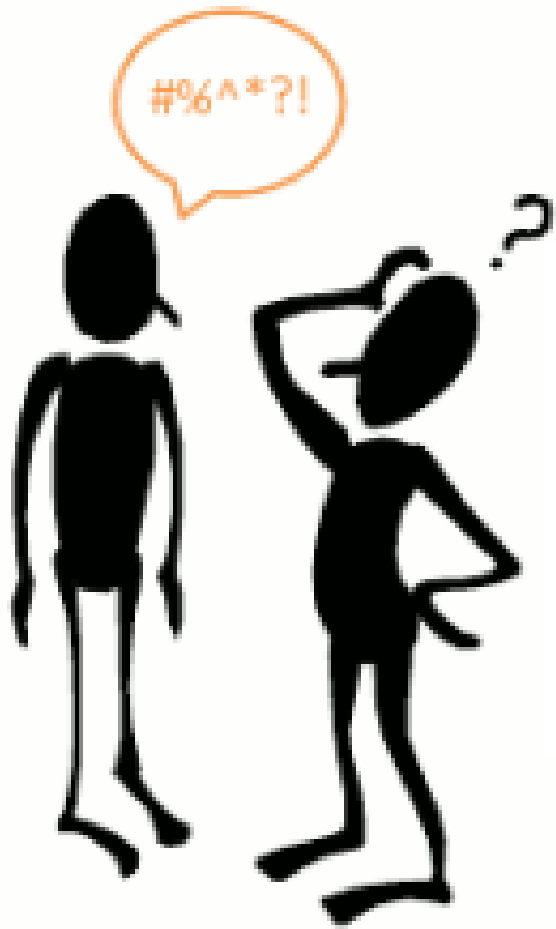
离我很近/远



就

话



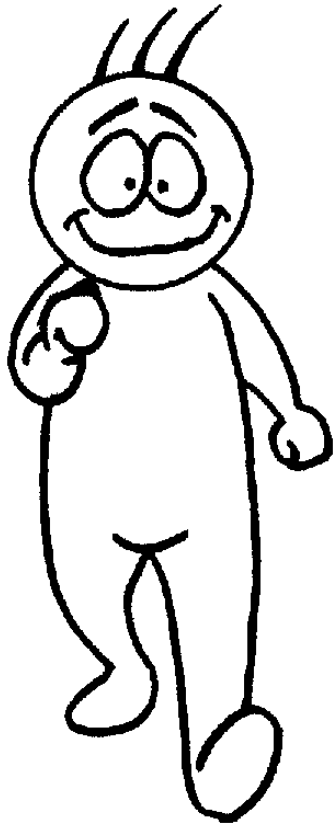


明白

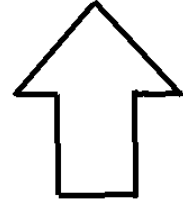
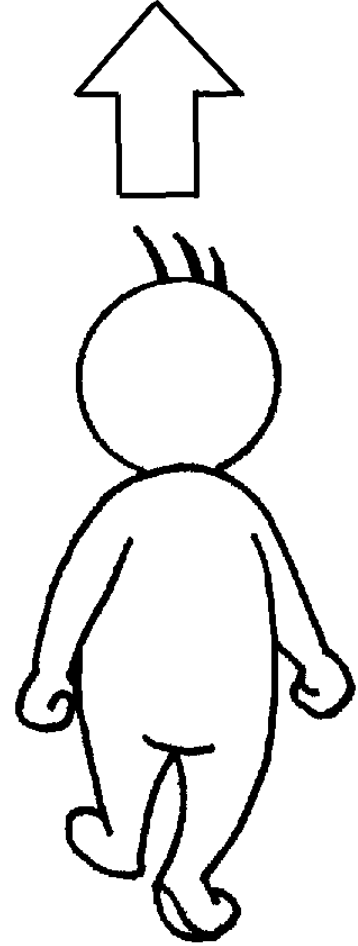
$$90 + 10$$

$$100$$

一共

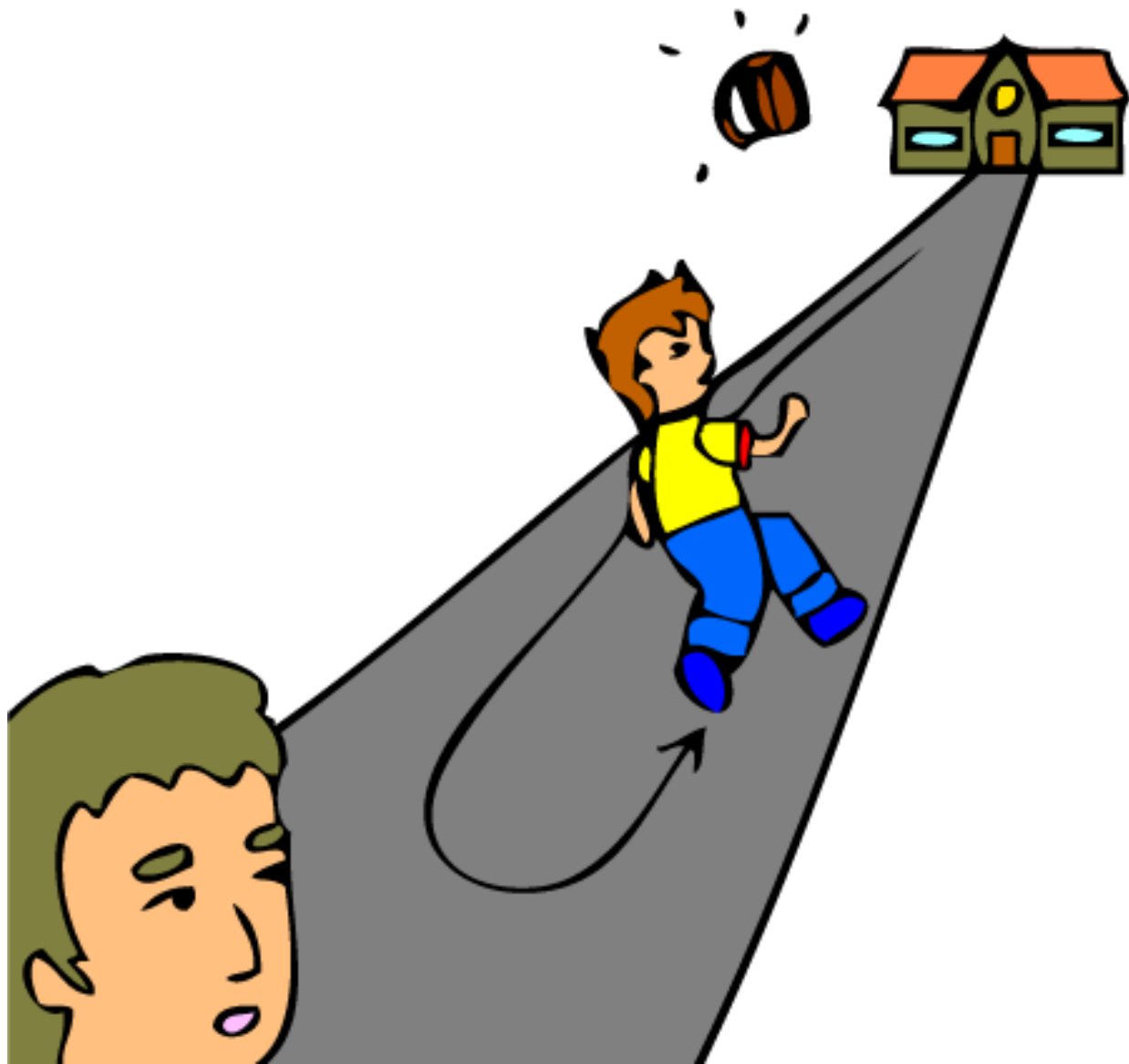


来



去





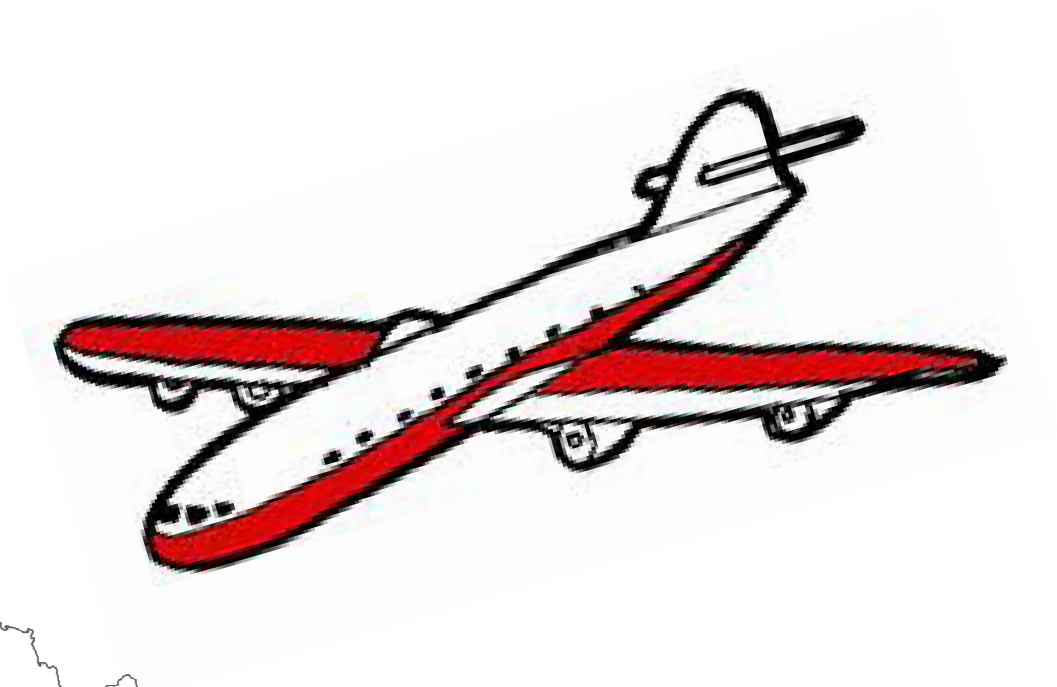
回去



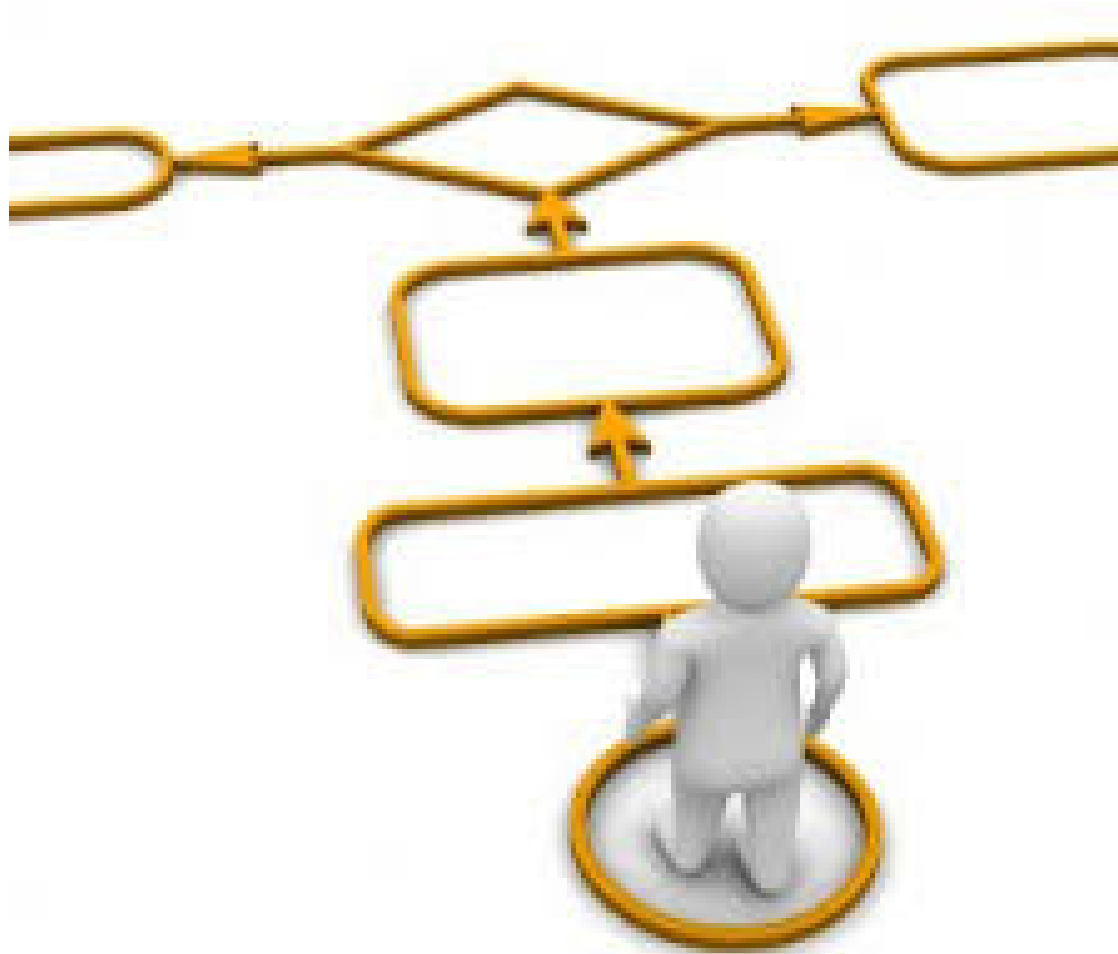
回来



回家



回国



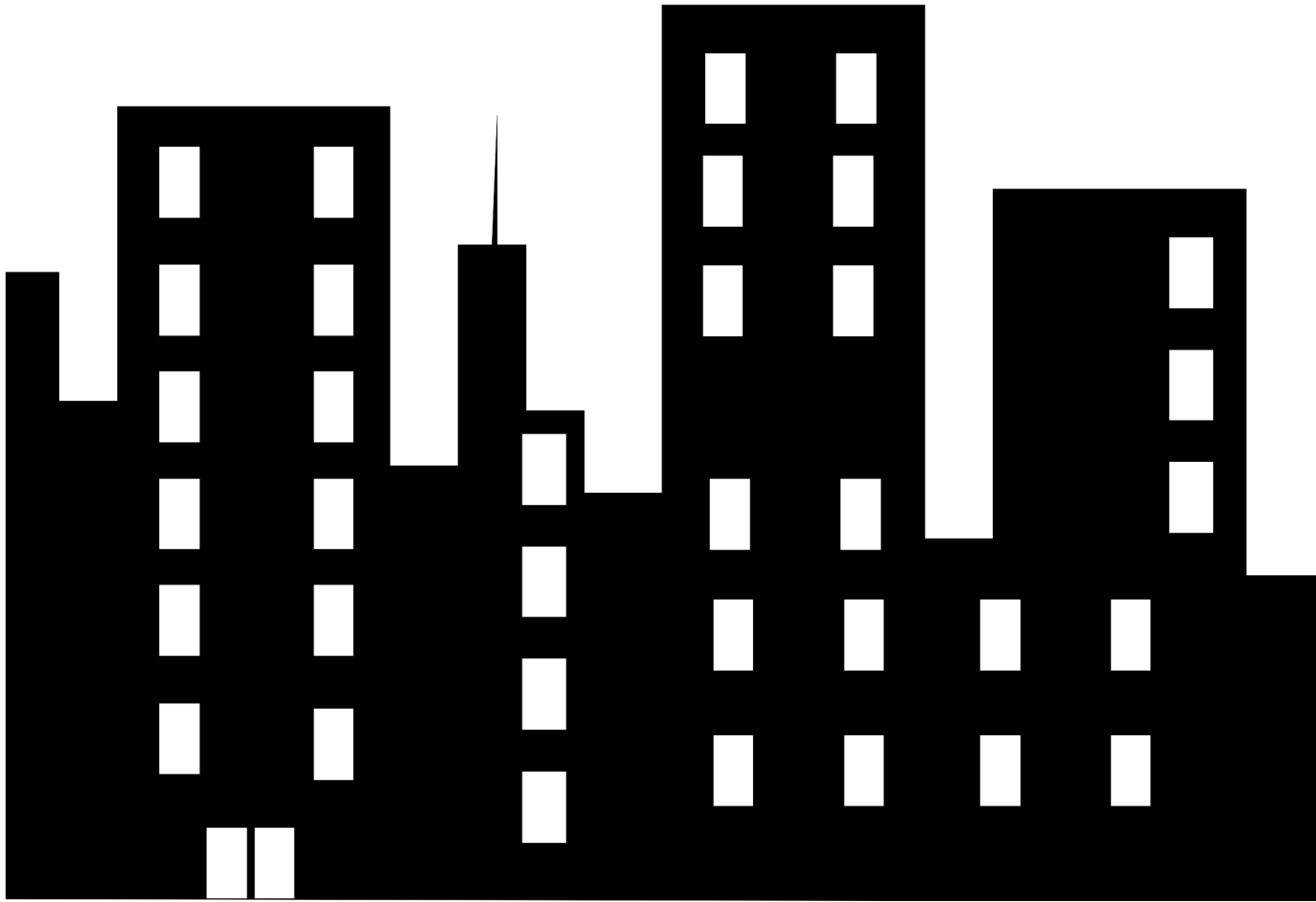
从



书架

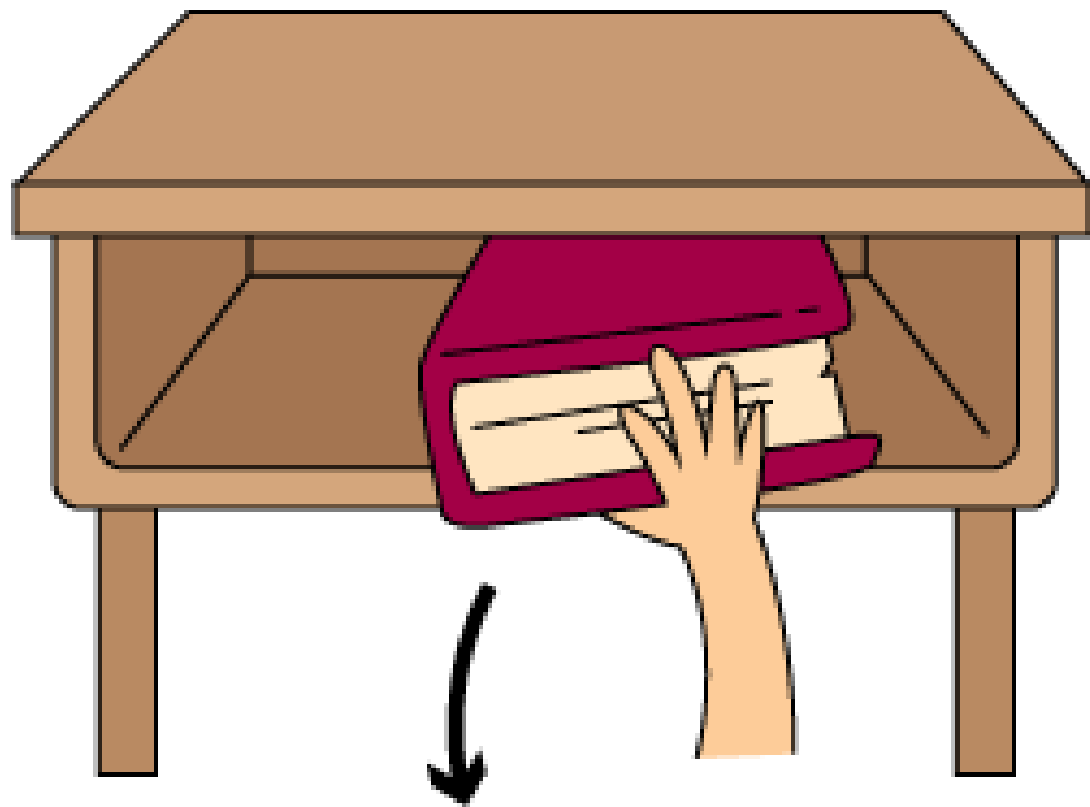


从书架取下一本书来



城里



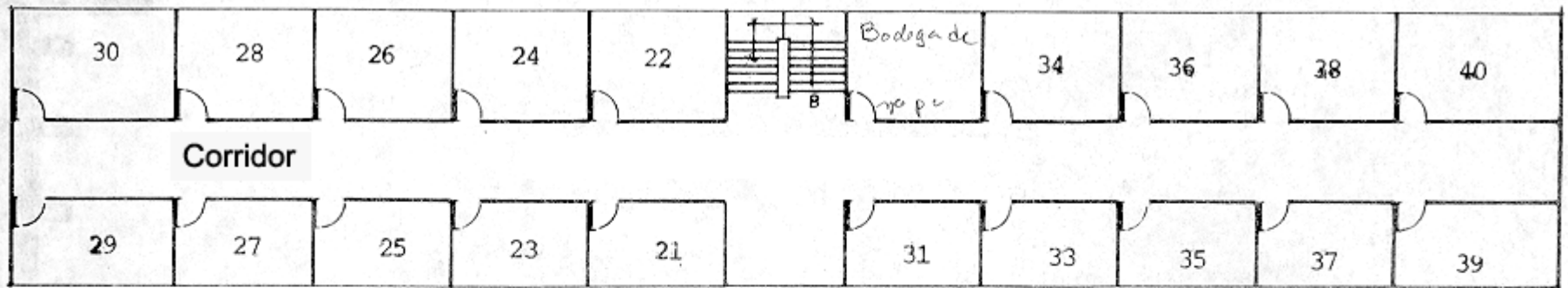


拿出书来

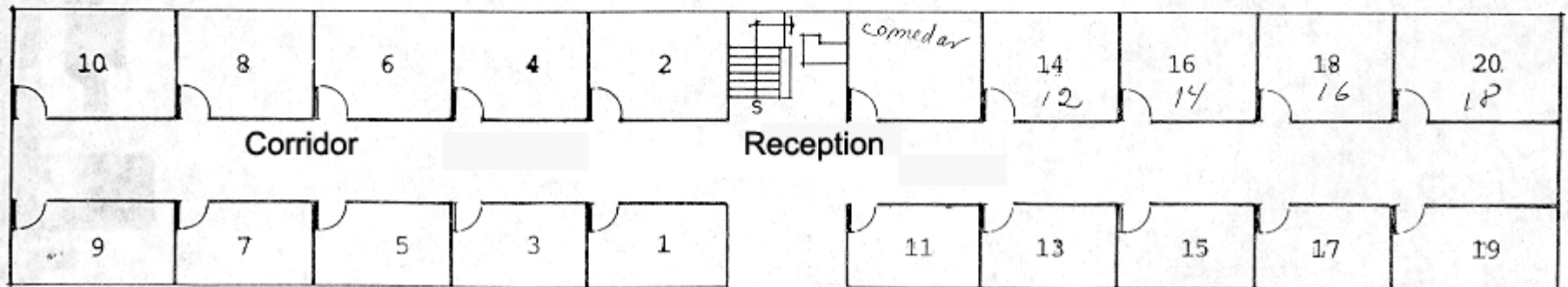


左边

右边



Upper Plant



ENTRADA

Lower Plant

