

# Počátky klasicismu a manýrismu

Michele Sanmicheli (1484–1559)

Jacopo Sansovino (1486–1570)

Gilvio Romano (1499?–1546)

# Verona

Michele Sanmicheli (1484–1559)

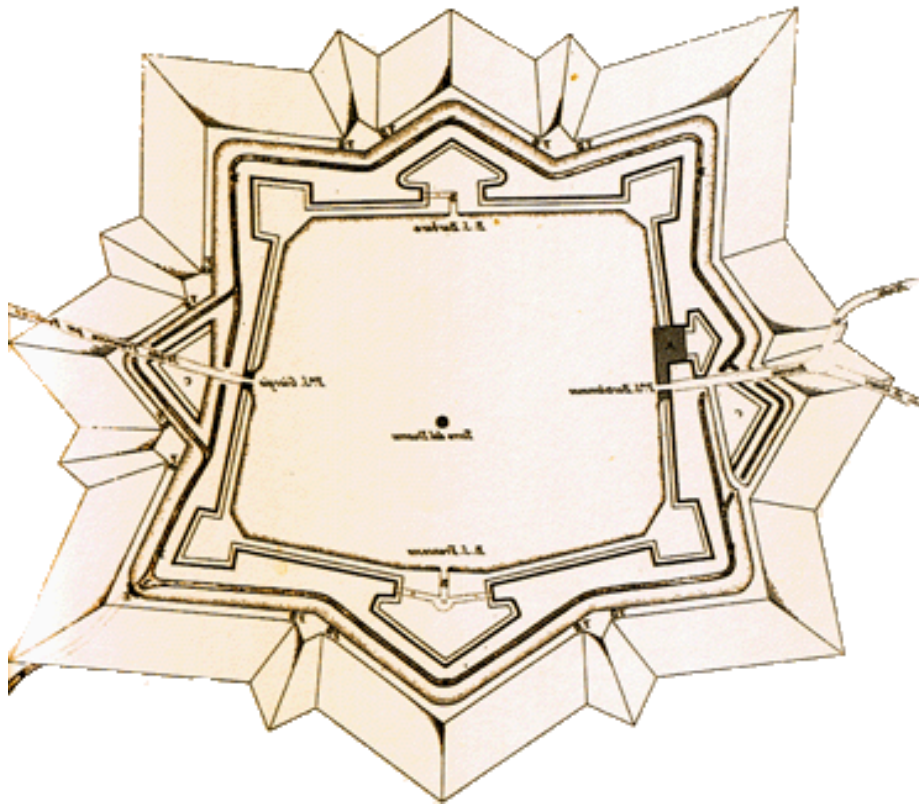


# Orvieto, fasáda katedrály, 1510-1524



# Verona





Verona, S. Maria in Organo, 1547–1559



# Verona, Porta Nuova, 1533-1540









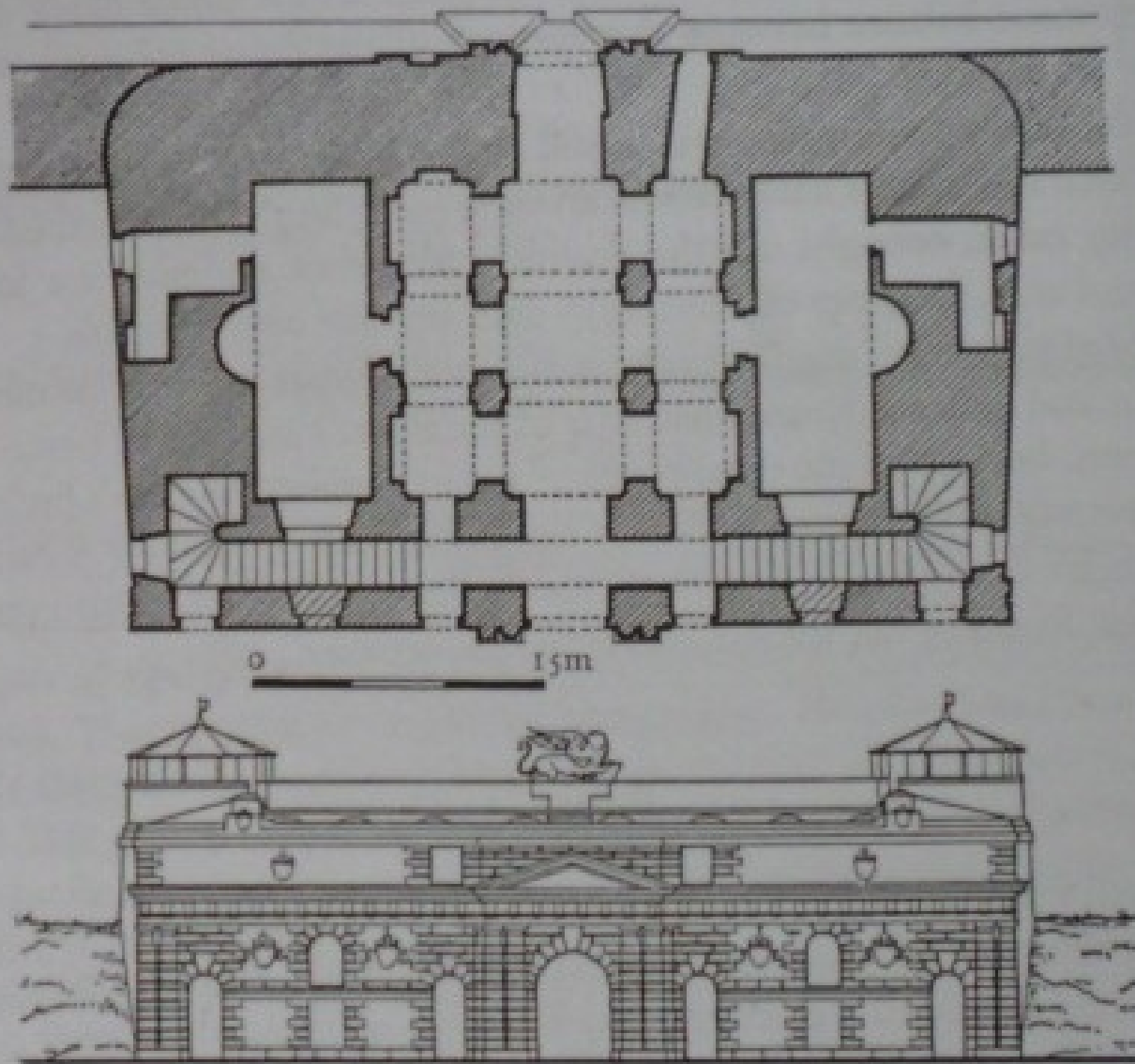
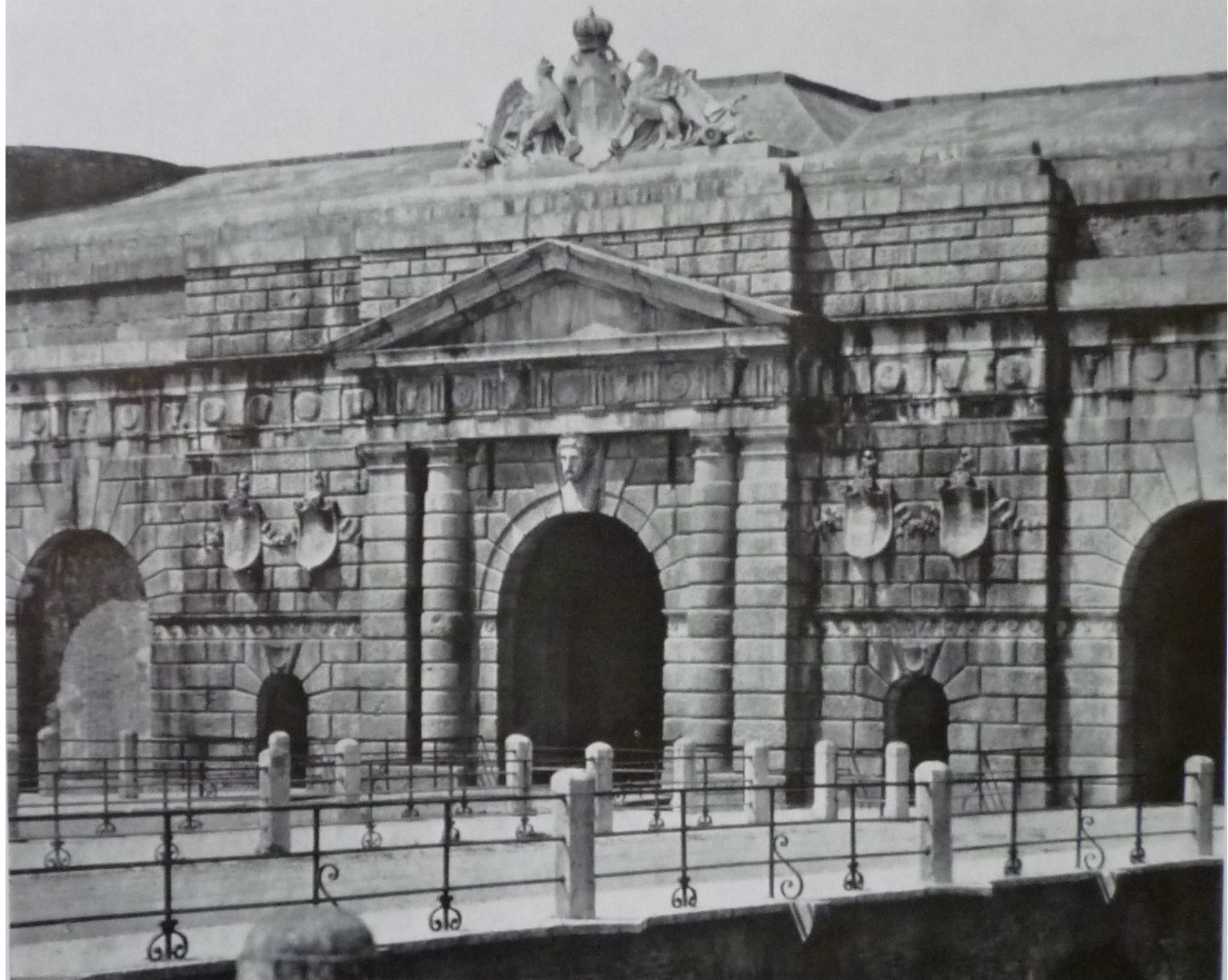


Figure 67. Michele Sanmicheli: Verona, Porta Nuova, 1533-40, plan and elevation

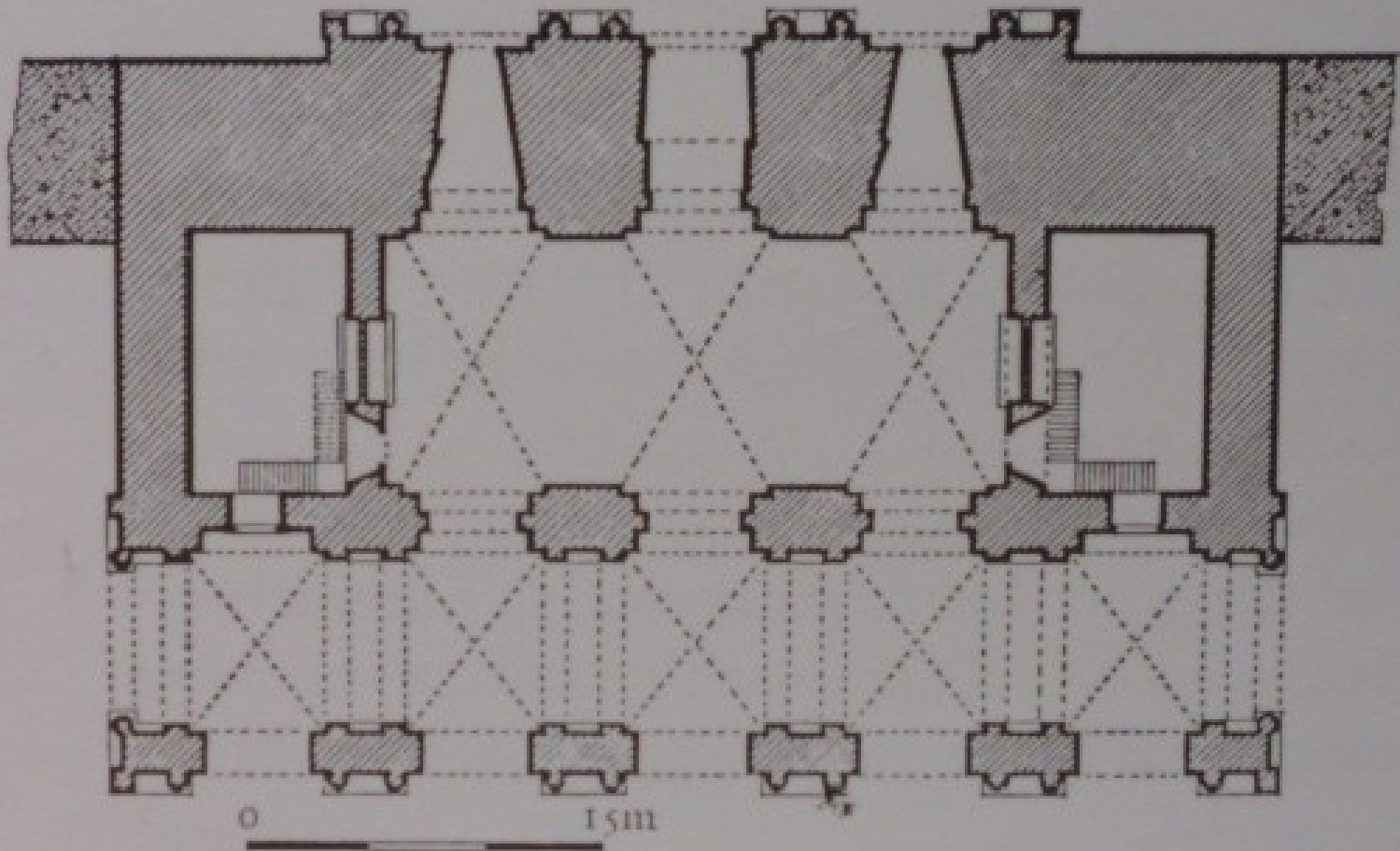


Antonio da Sangallo ml., Řím, Porta S. Spirito, kolem 1540



# Verona, Porta Palio, kol. 1555-1560





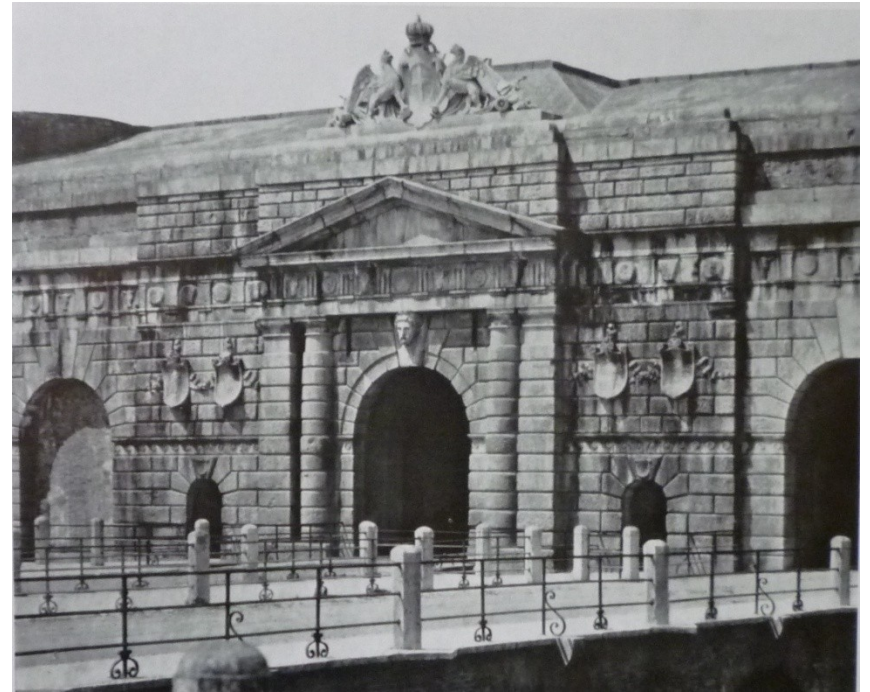




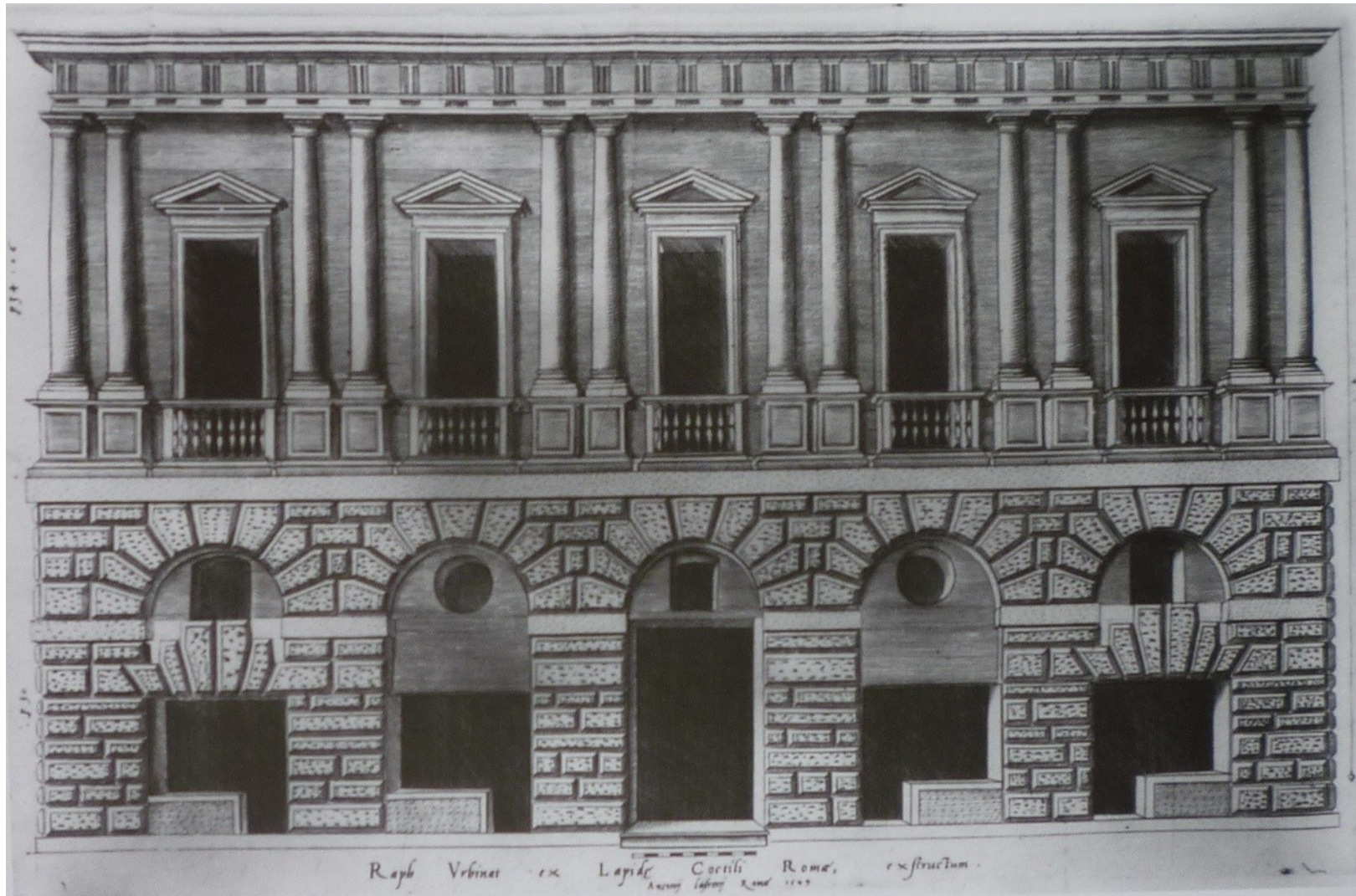




# Giovanni Falconetto, Padova



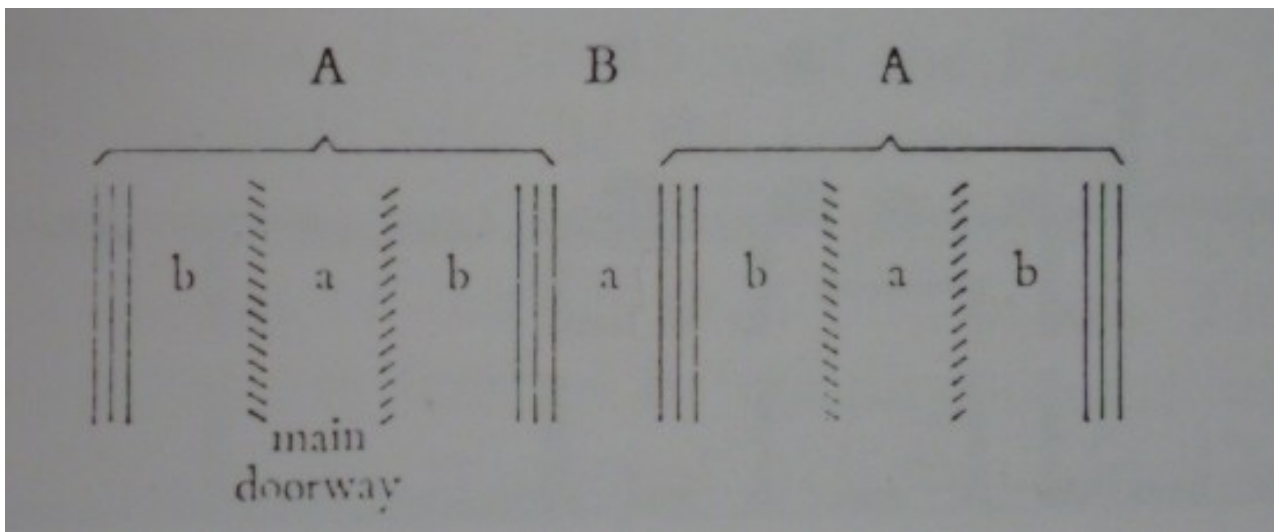
Řím, Palazzo Caprini, kolem 1510



# Verona, Palazzo Bevilacqua









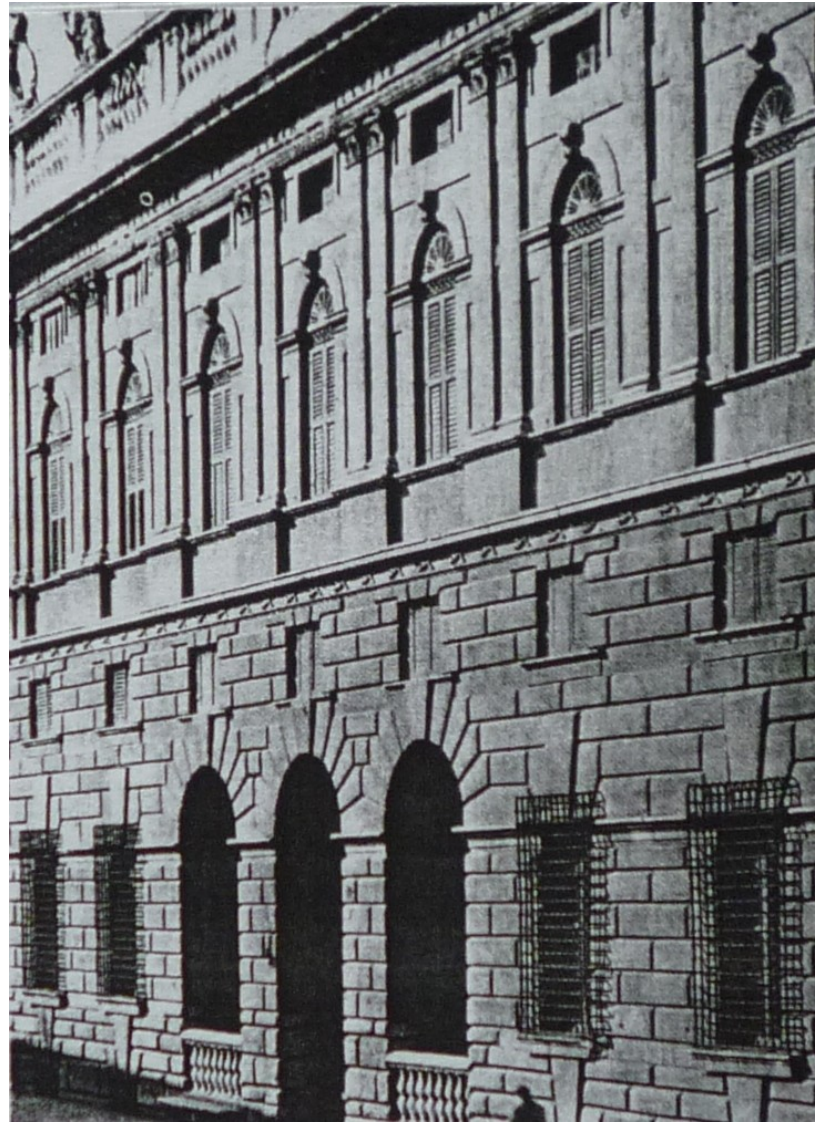
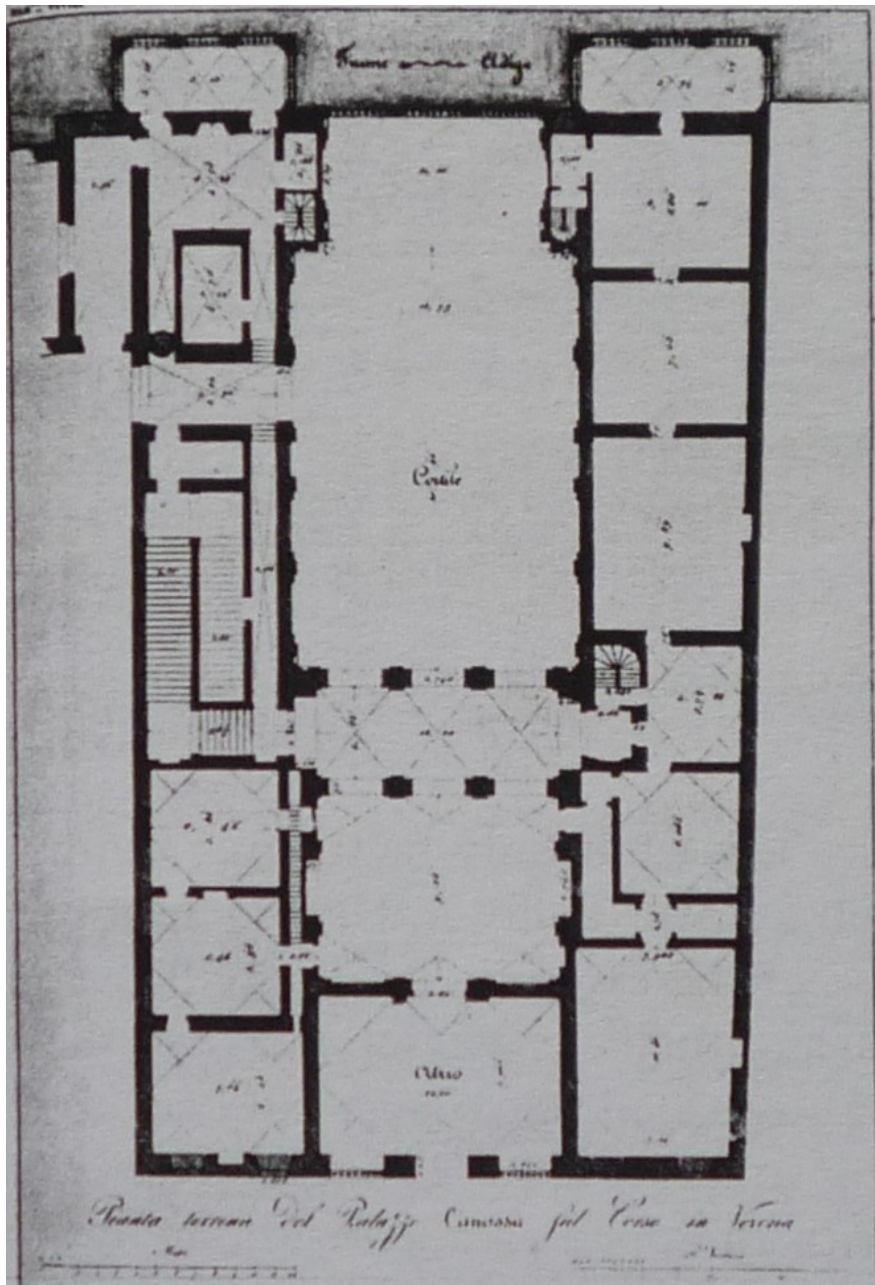


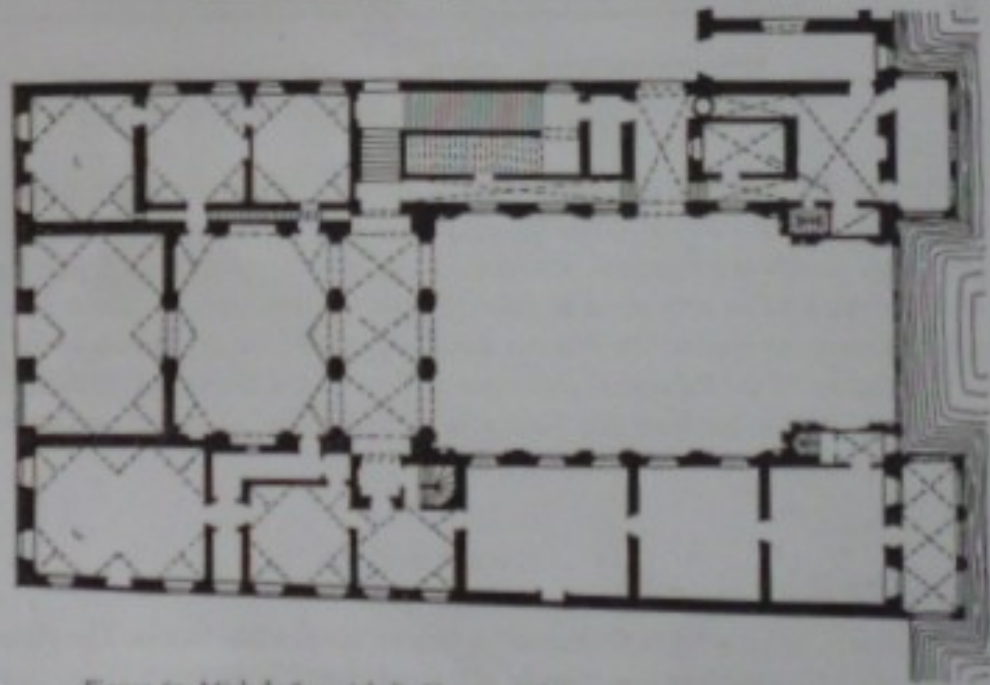
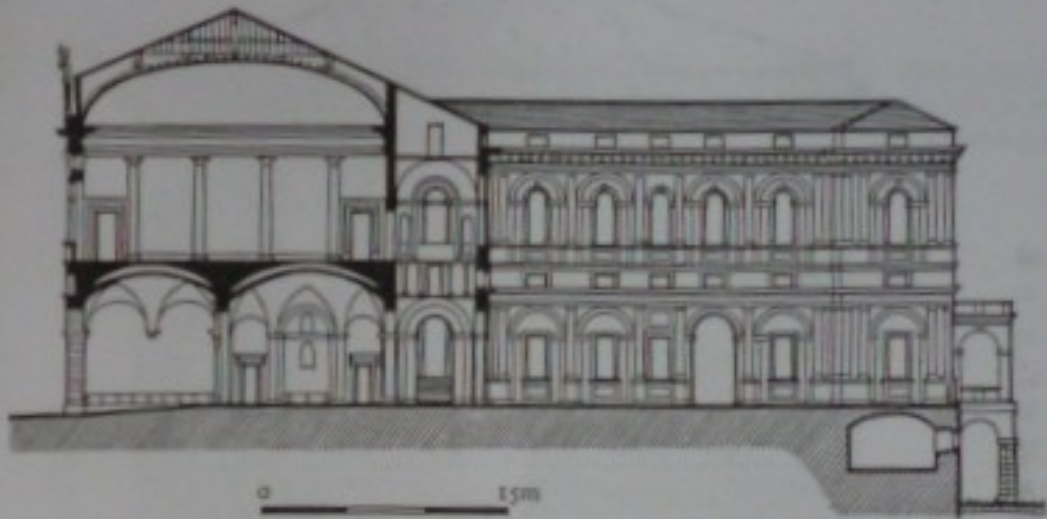


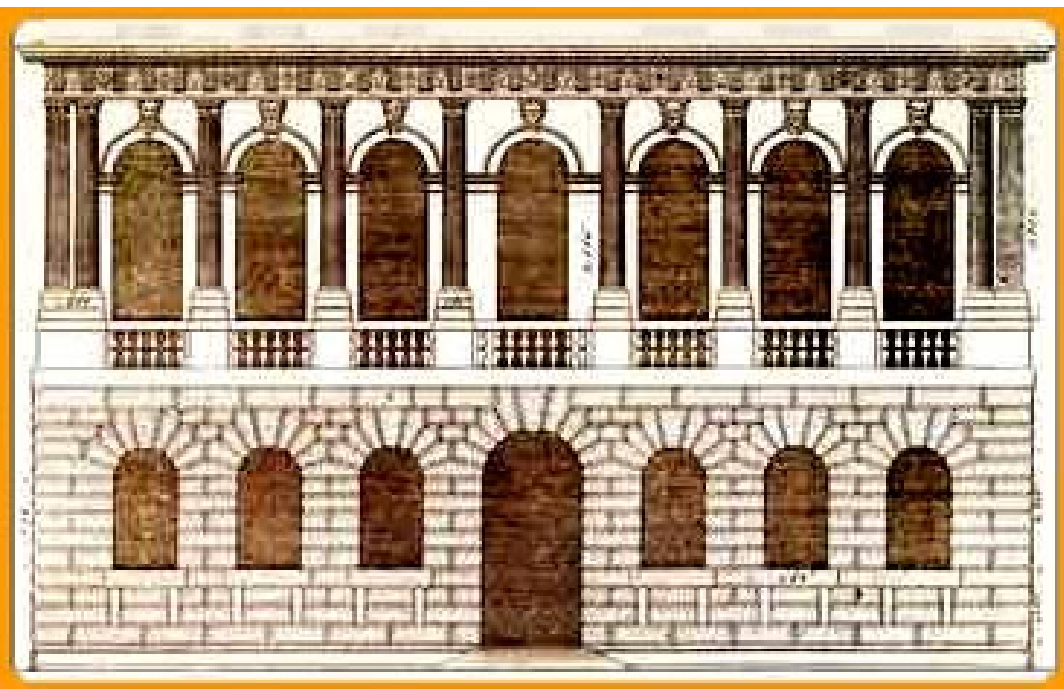


Verona,  
Palazzo Canossa,  
od 1530

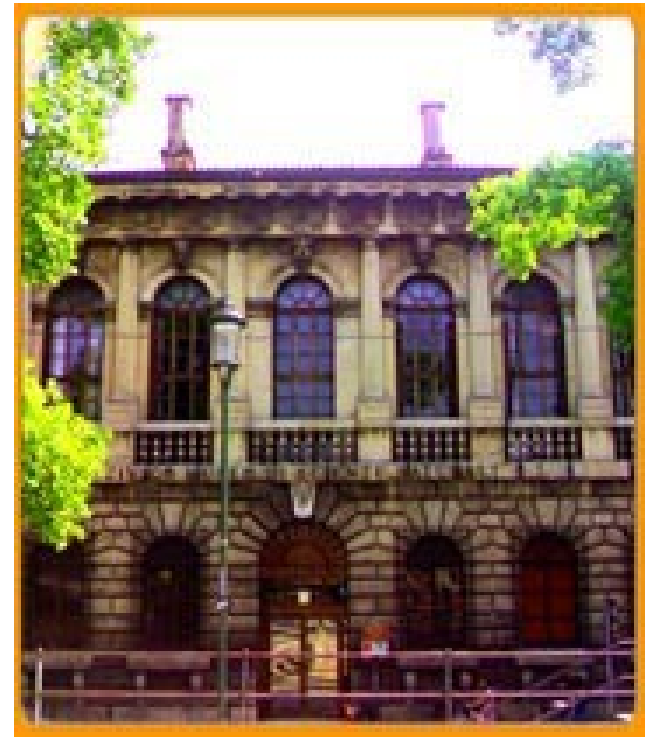


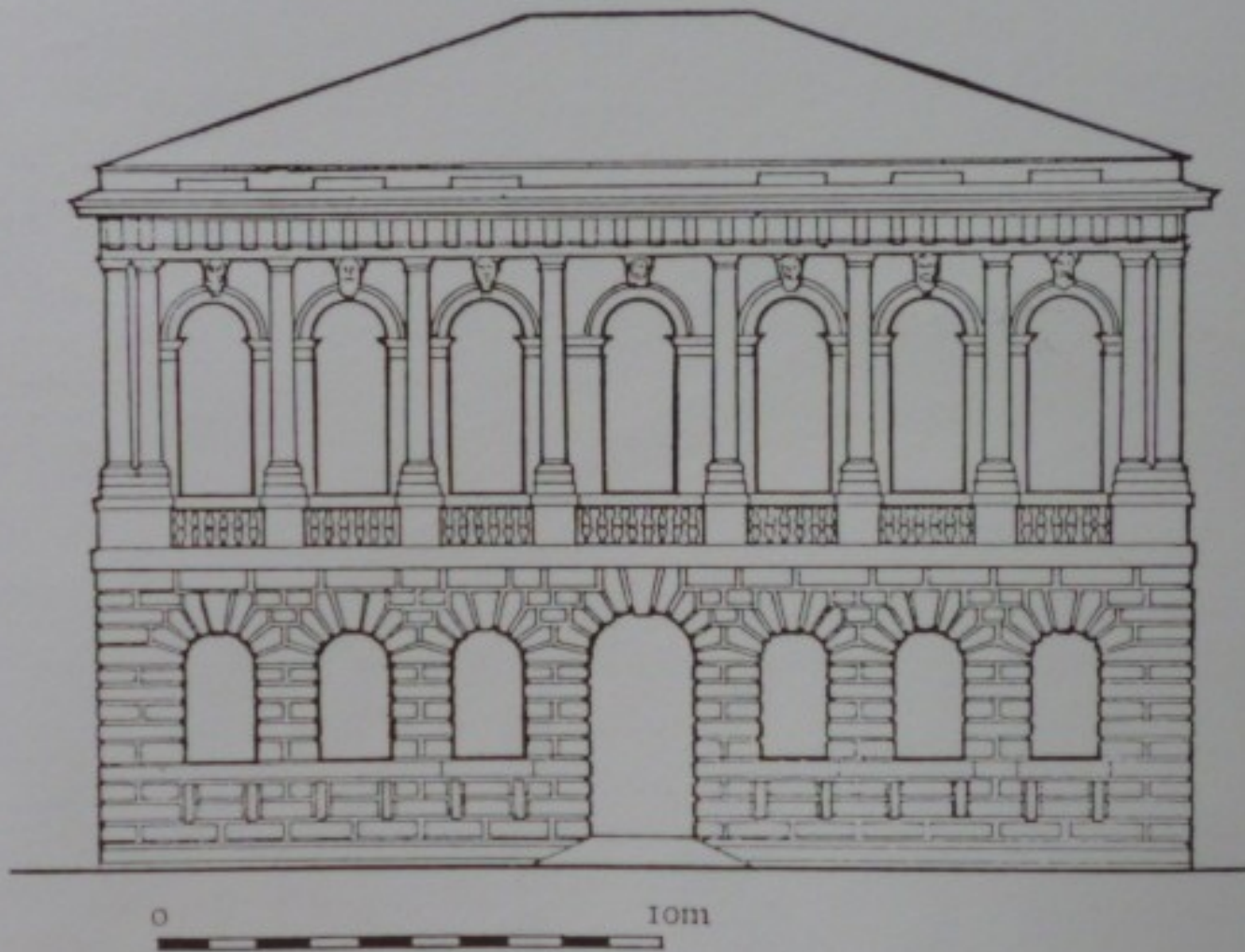






Verona, Palazzo Pompei





102. Michele Sanmicheli: Venice, Palazzo Pompei, c. 1555, façade

# Verona, Palazzo Guastaverza

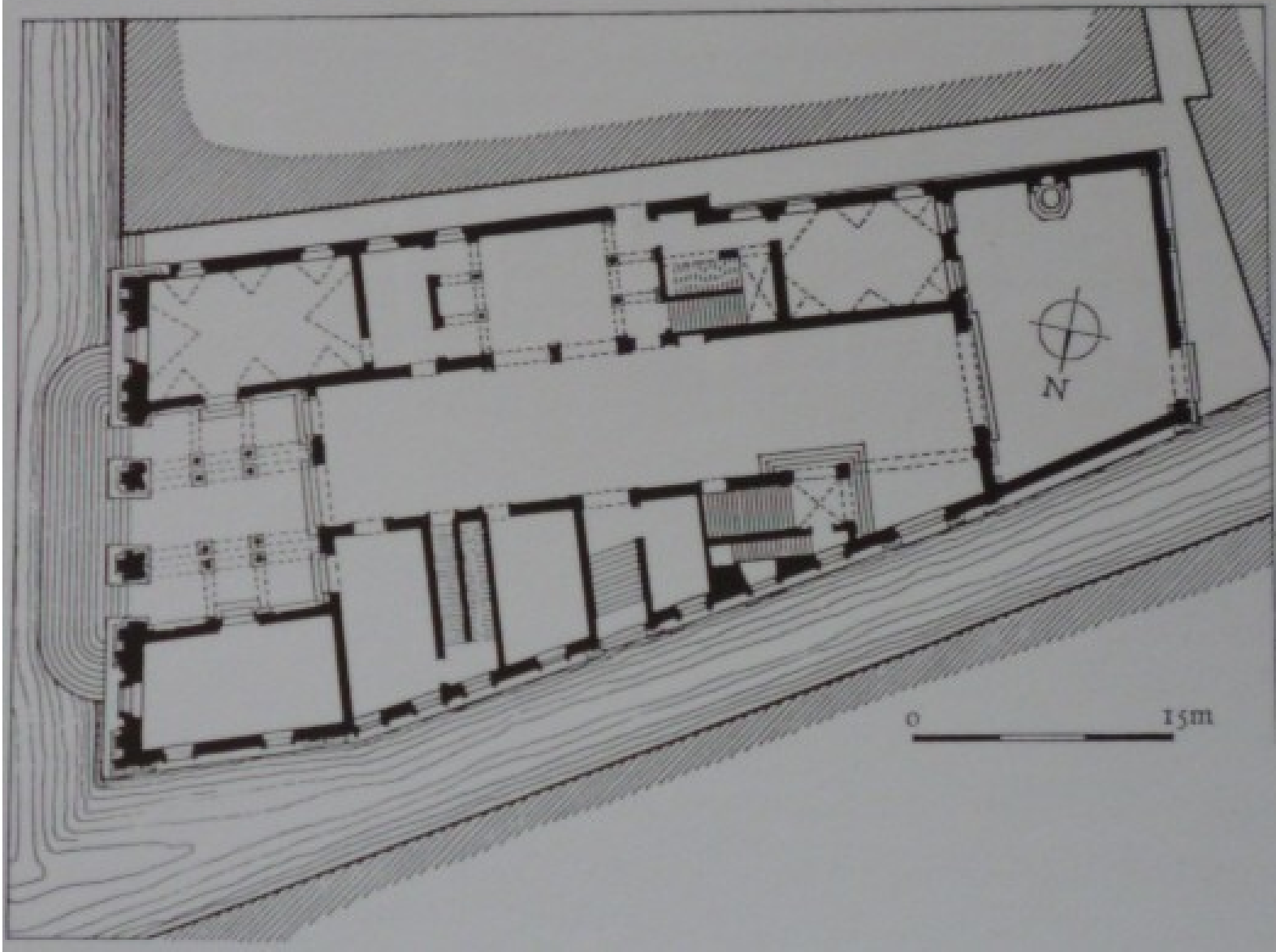


Benátky, Palazzo Grimani, od 1556





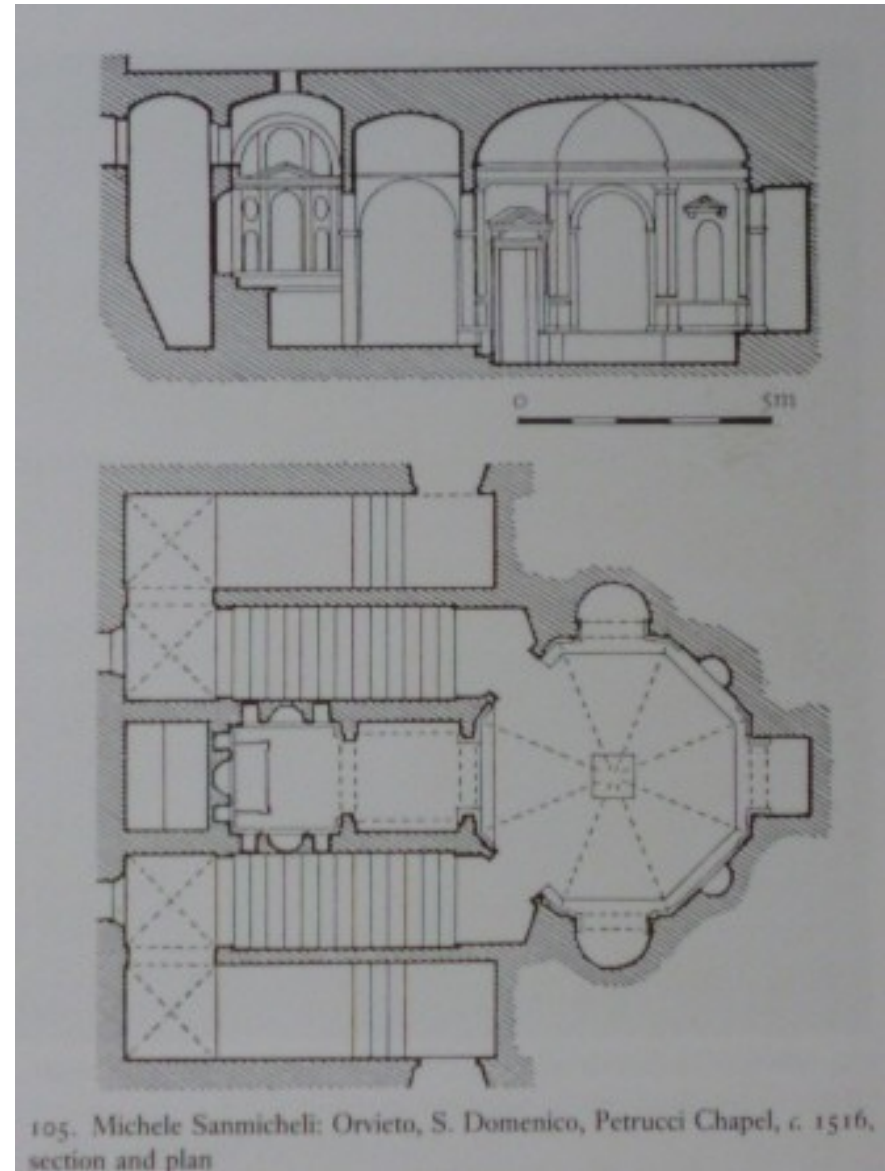
103. Michele Sanmicheli: Venice, Palazzo Grimani, begun c. 1556, plan of ground floor





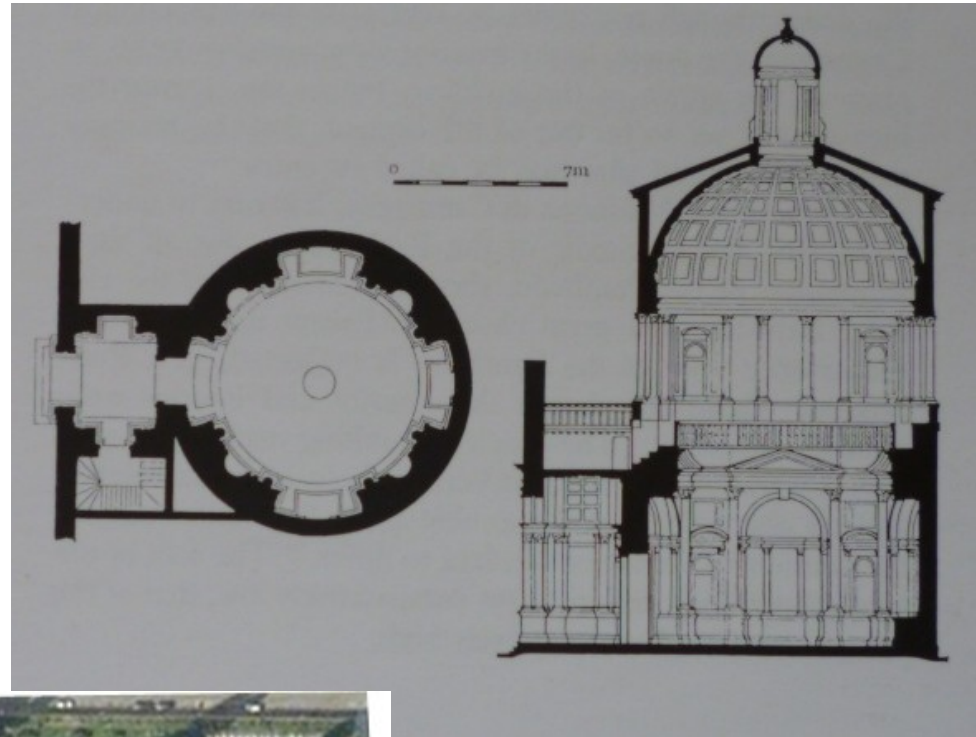
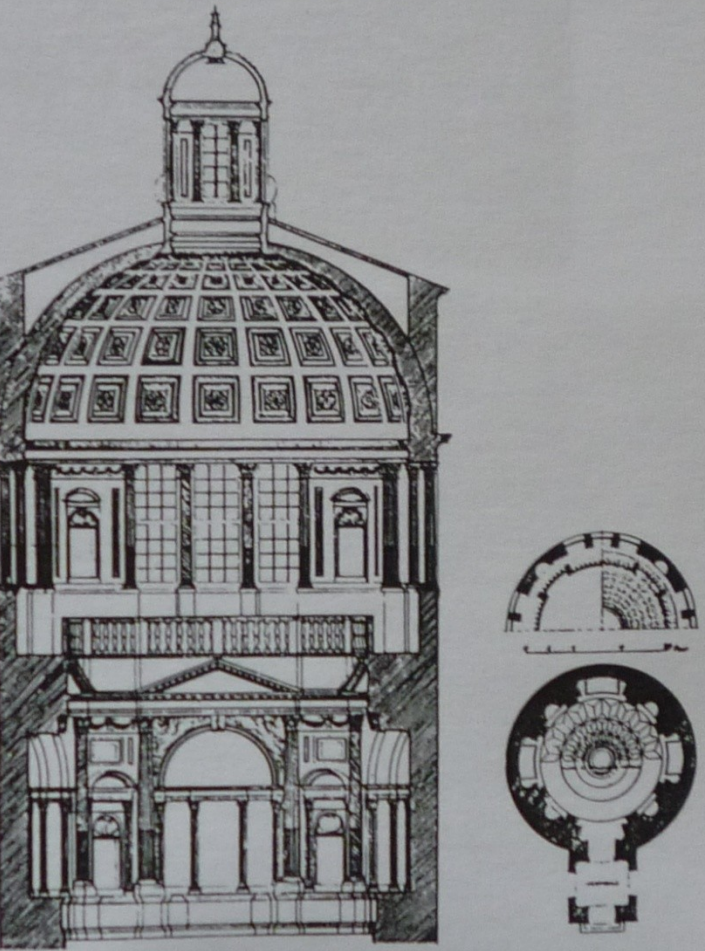


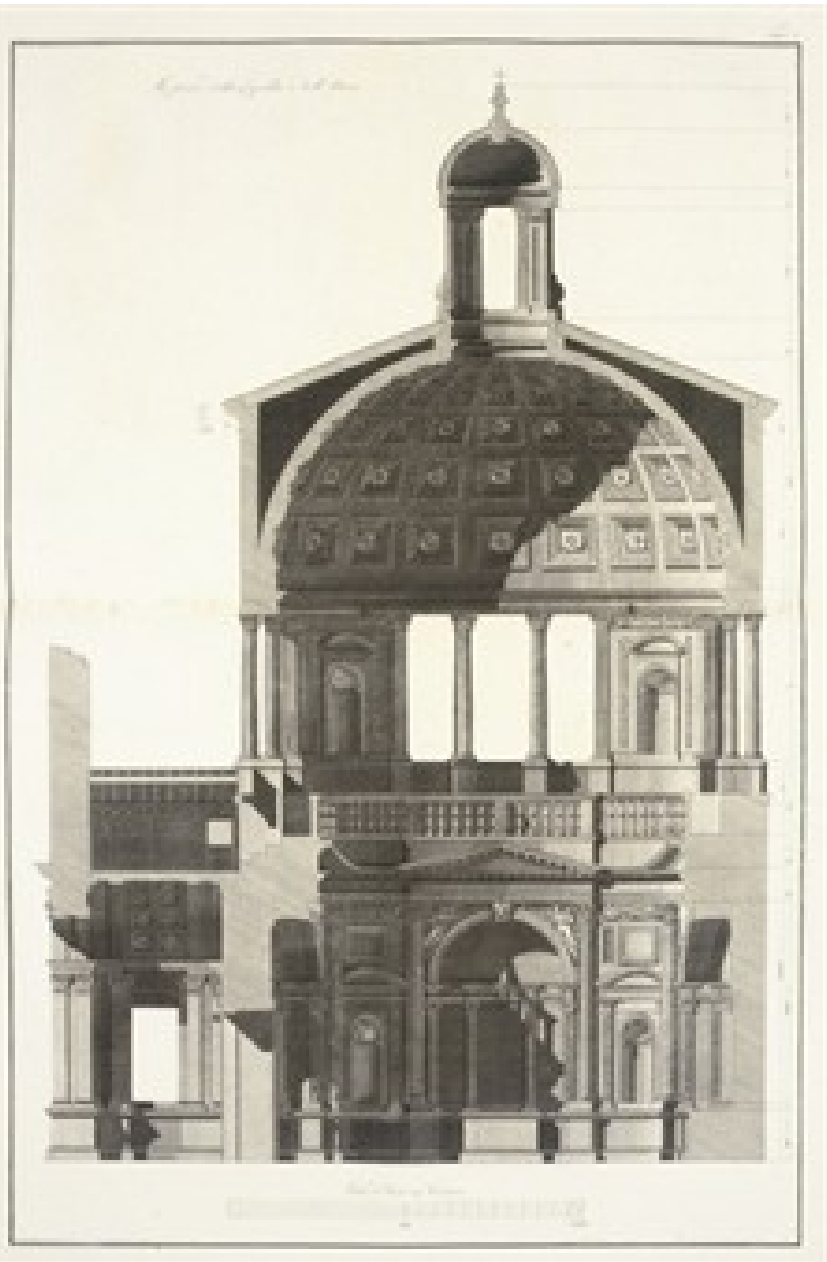
# Capella Petrucci při S. Domenico v Orvietu, kol. 1516



105. Michele Sanmicheli: Orvieto, S. Domenico, Petrucci Chapel, c. 1516, section and plan

Capella Pellegrini u S. Bernardino ve Veroně,  
od 1527



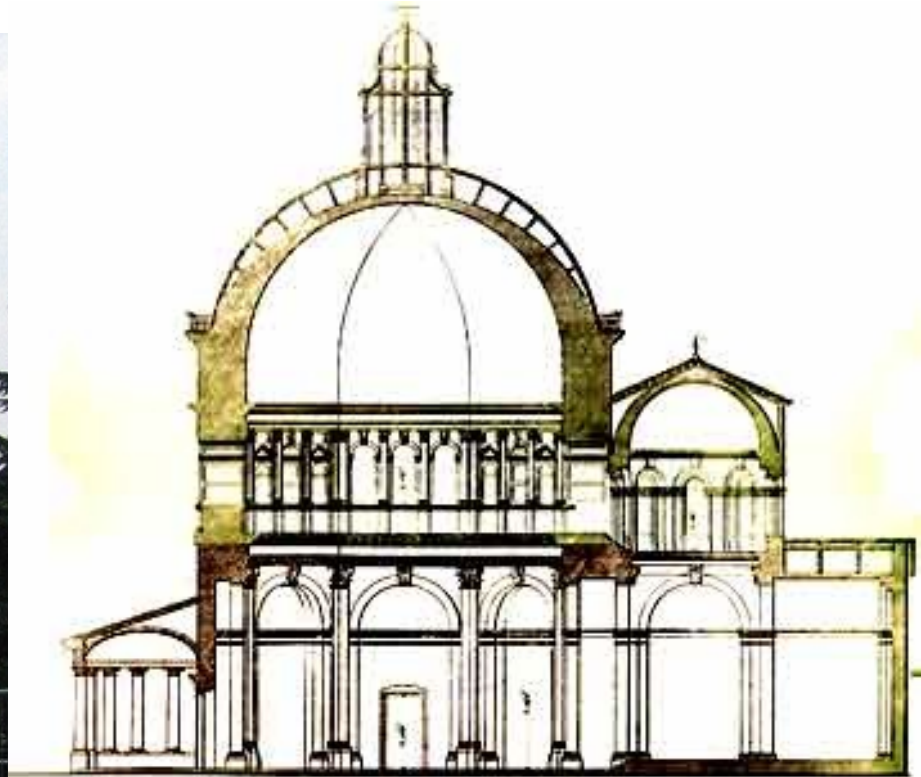




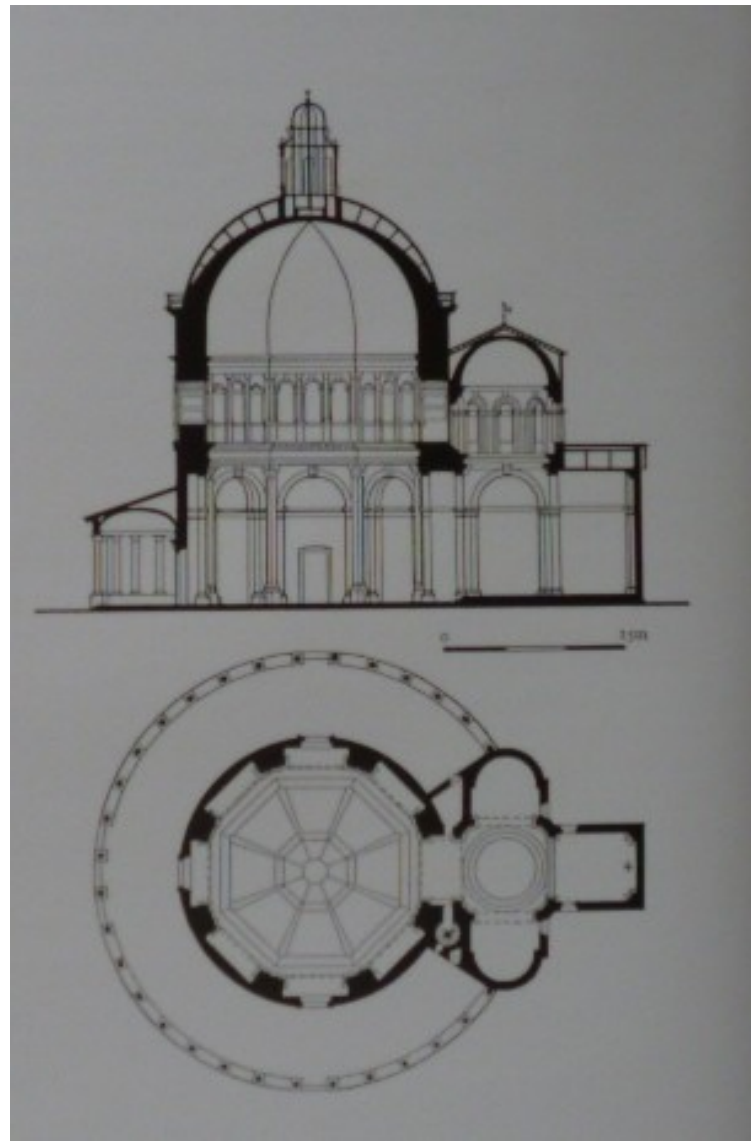
leg



# Madonna di Campagna ve Veroně, 1559







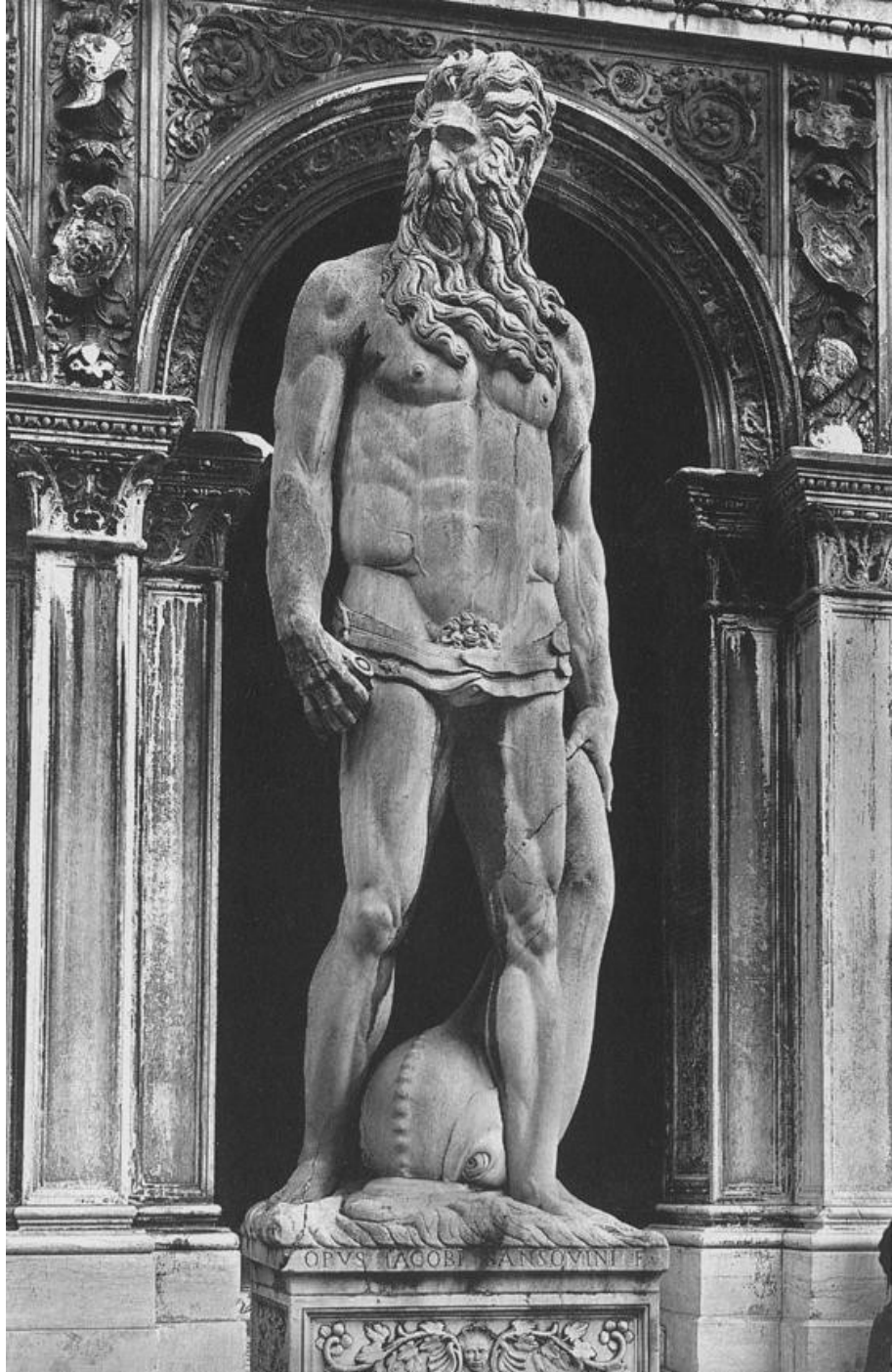


# Jacopo Tatti zvaný Il Sansovino (1486–1570)



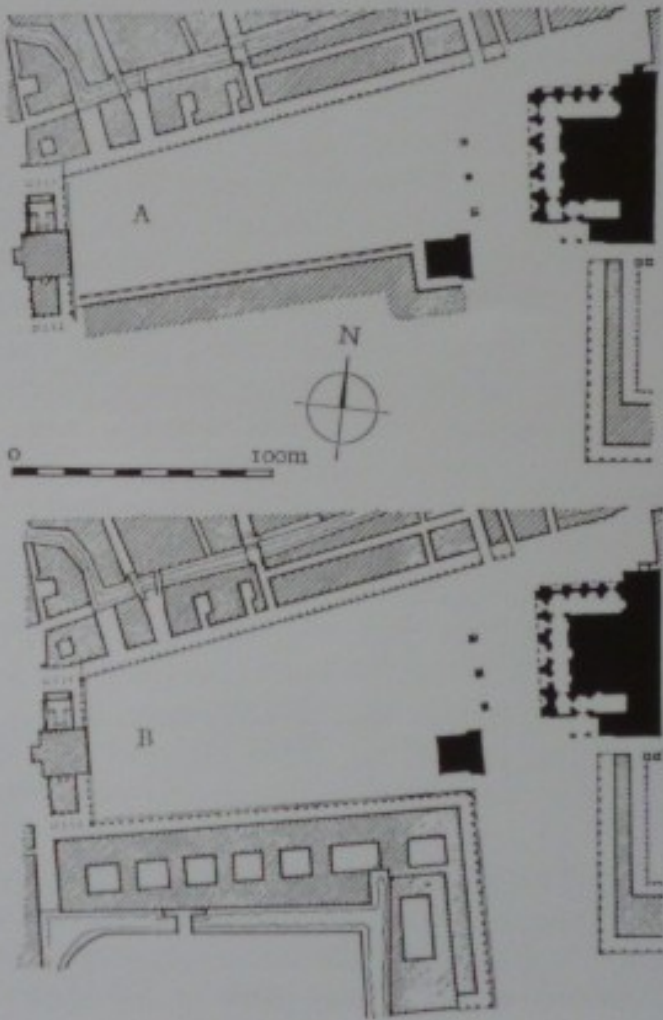


1529 – protomagistrem u San Marco  
(*Proto dei Procuratori di Supra*)



Neptun, Benátky, Palazzo Ducale,  
1554-1567

122. Venice, Piazza S. Marco, plans (A) before c. 1530, (B) c. 1600



# Benátky, Bibliotheca Marciana; Loggetta

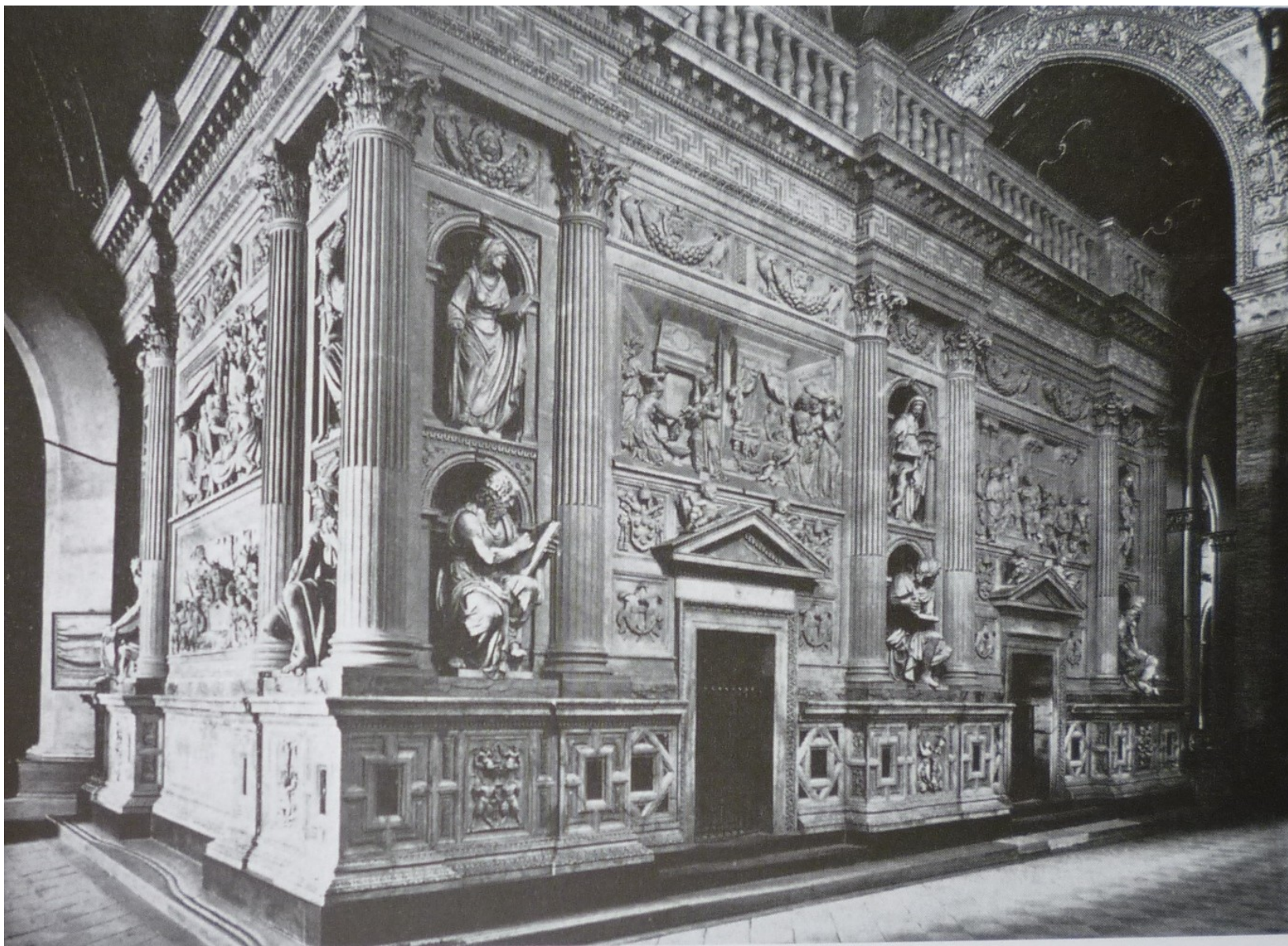




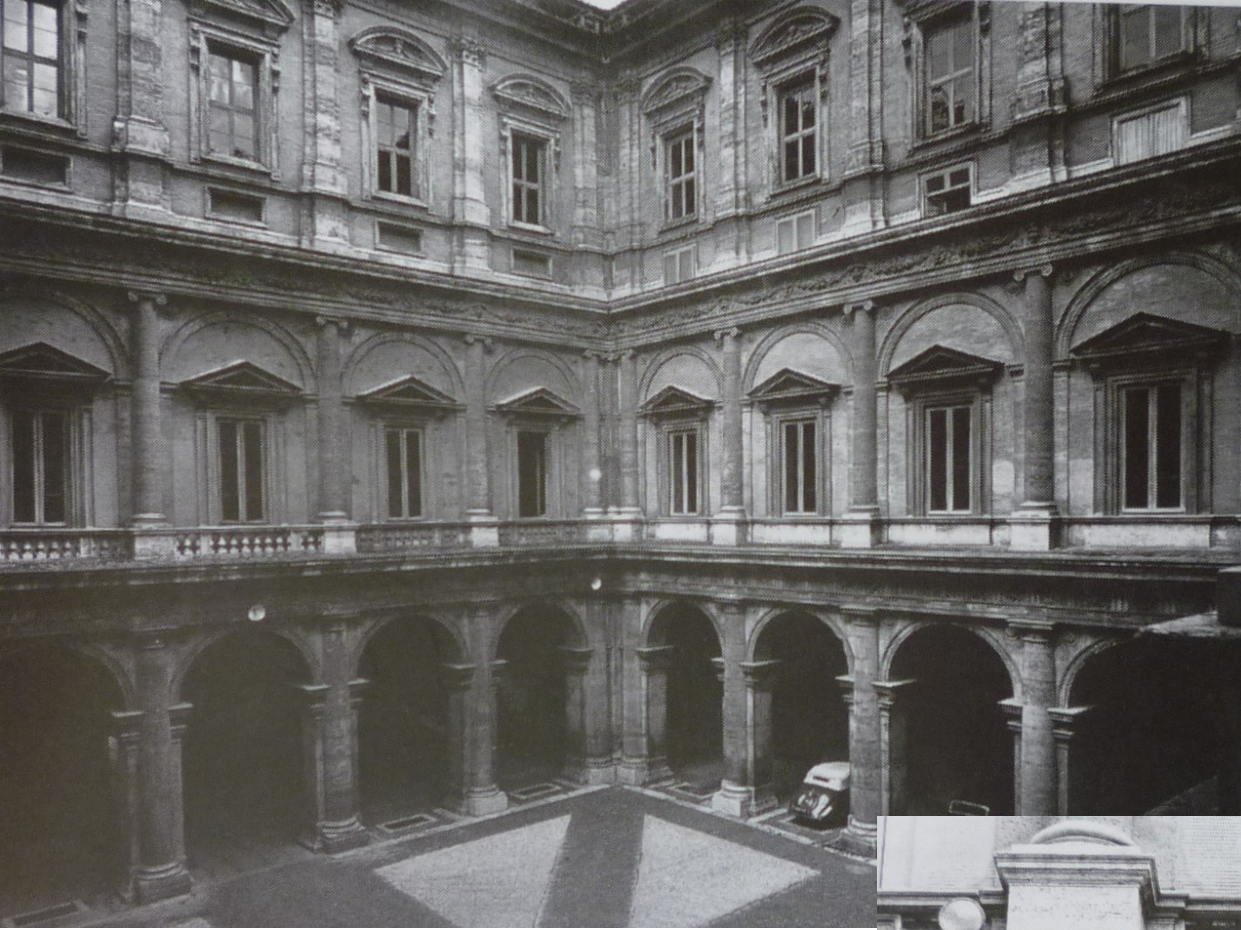
# Benátky, Knihovna S. Marco, po 1537–1540



# Santa Casa v Loretu, 1509





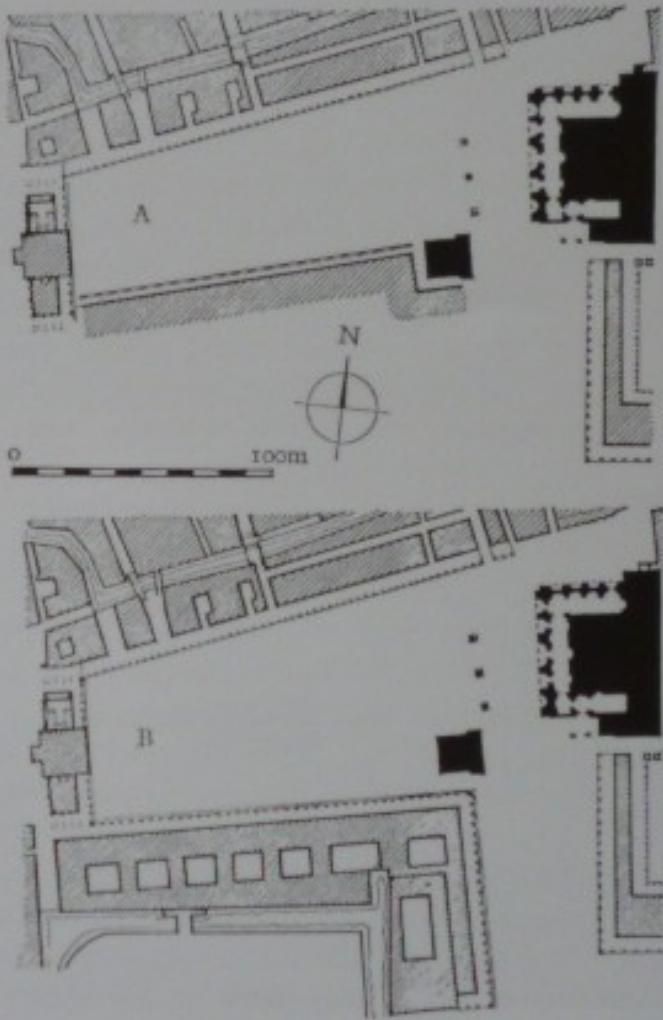








122. Venice, Piazza S. Marco, plans (A) before c. 1530, (B) c. 1600

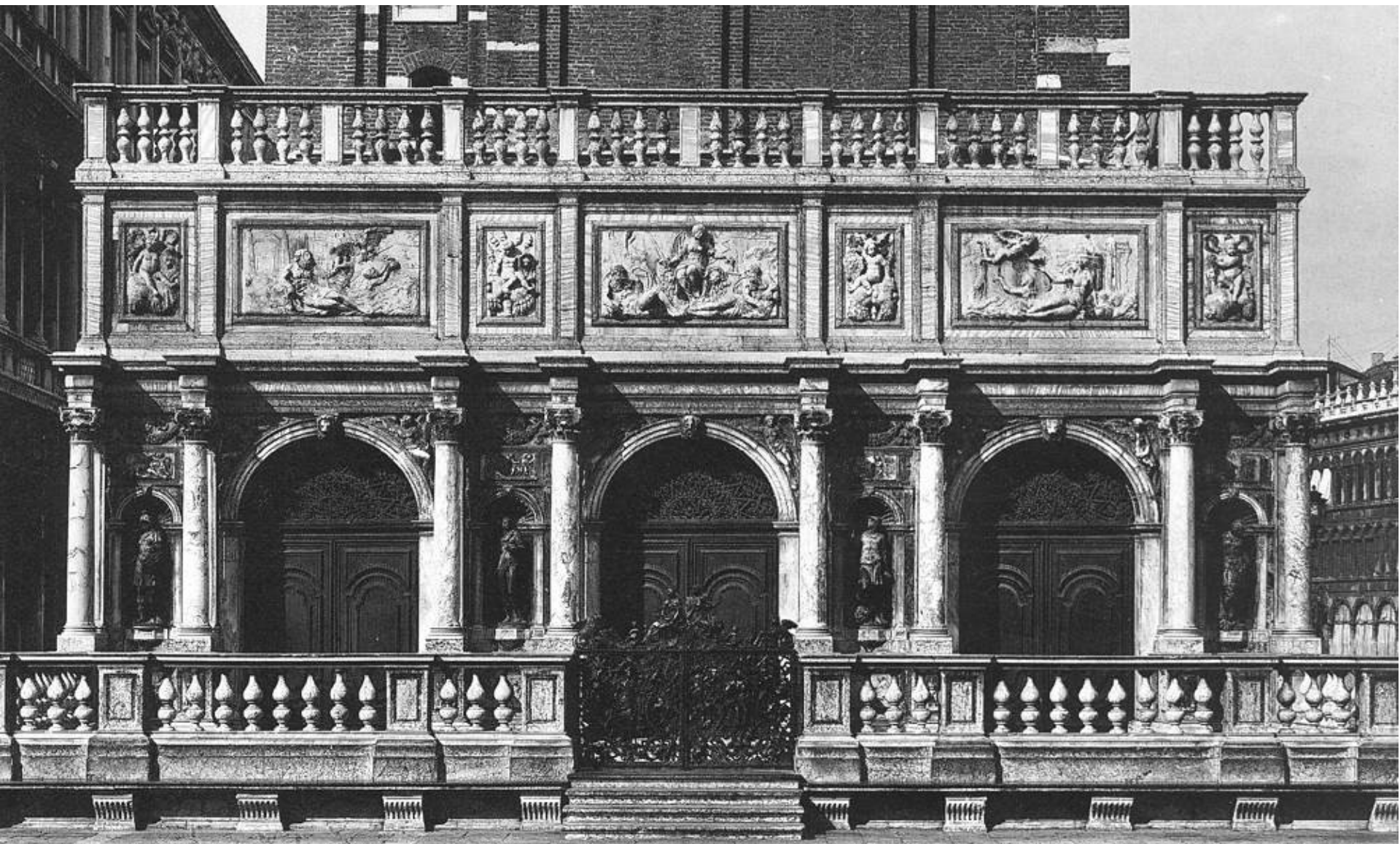






# Loggetta – od 1537 (Ridotto dei Nobili )





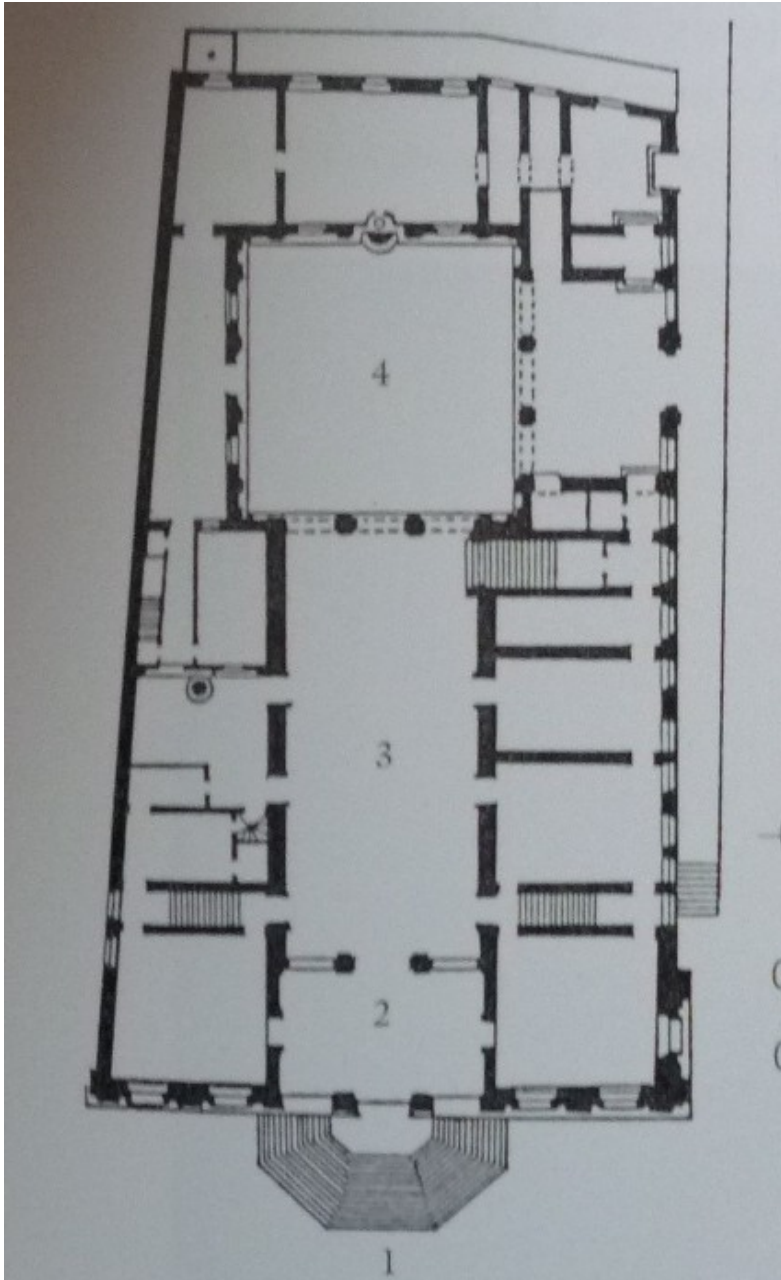
# Benátky, Zecca (mincovna a pokladnice Republiky), po 1537

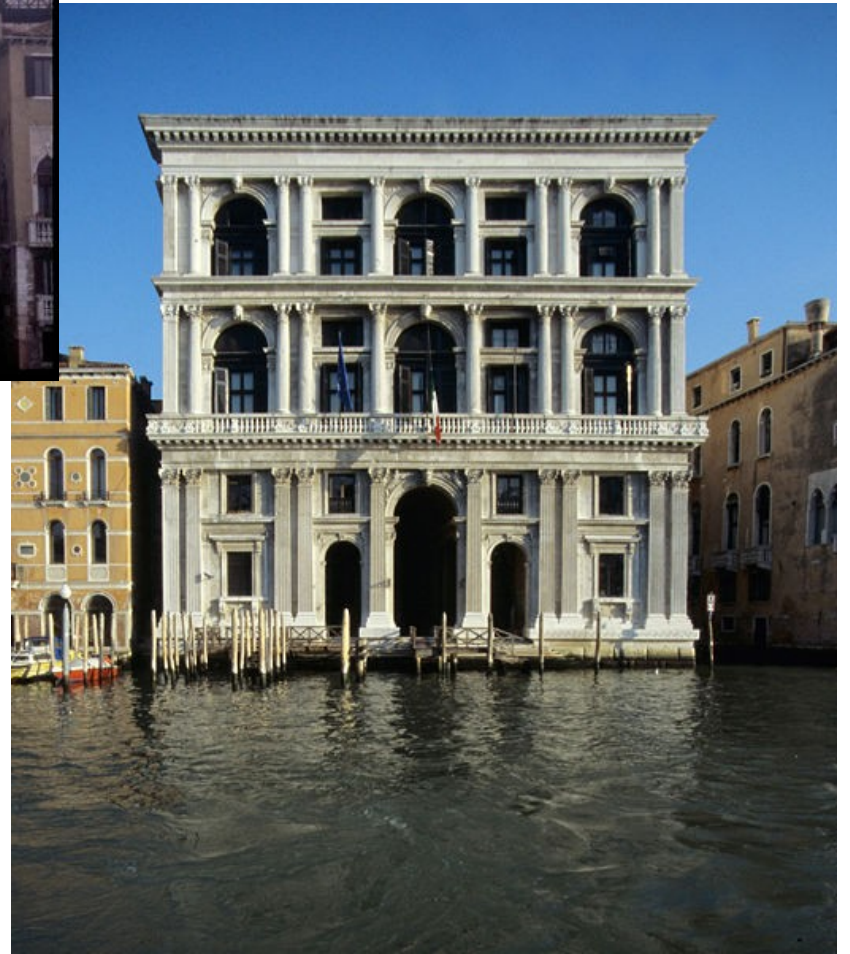




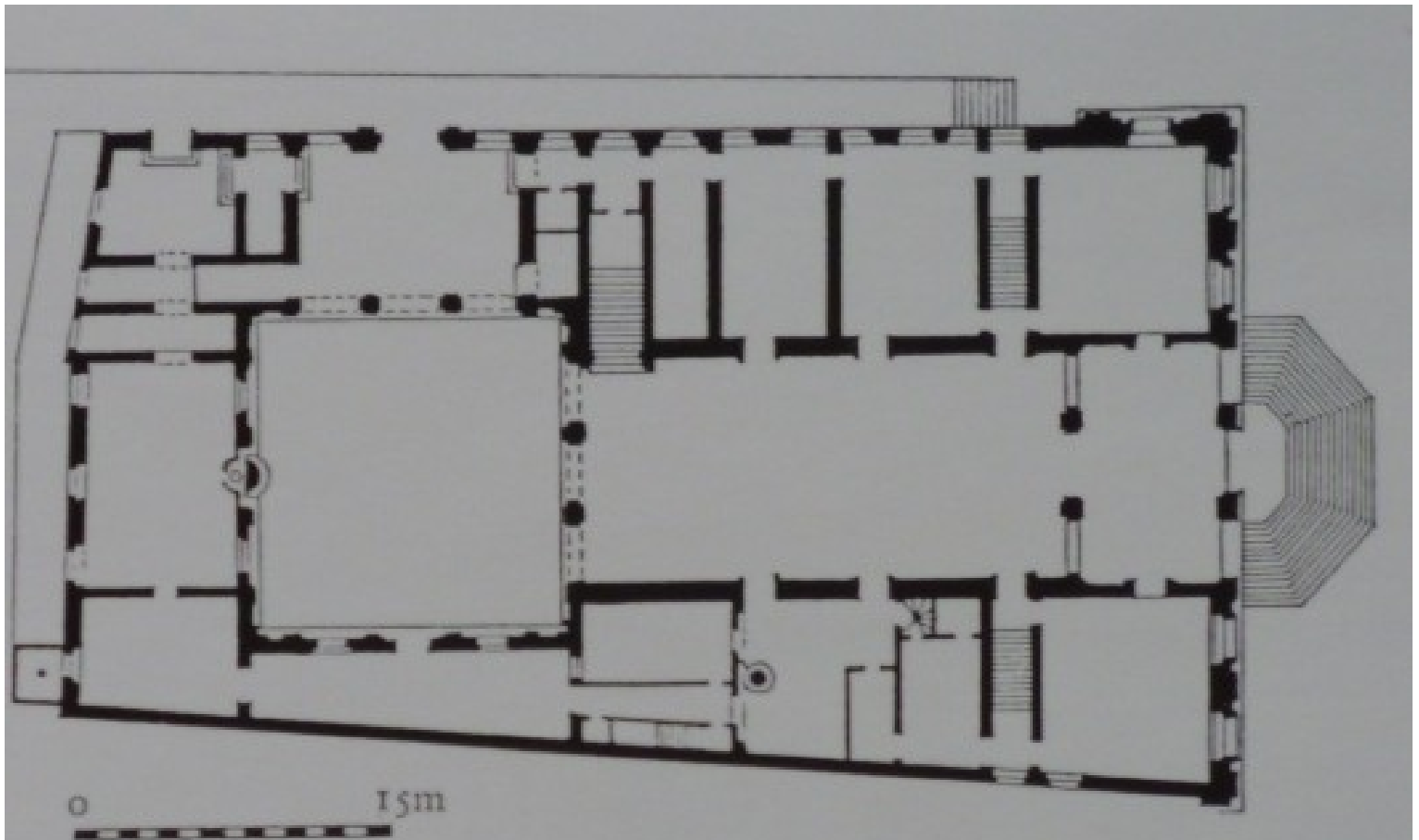


Benátky, Palazzo Corner della Cá Grande, 1530-1545









127. Jacopo Sansovino: Venice, Palazzo Corner della Cà Grande, begun  
c. 1545, plan





## Villa Garzoni v Pontecasale – 1535-1545



-

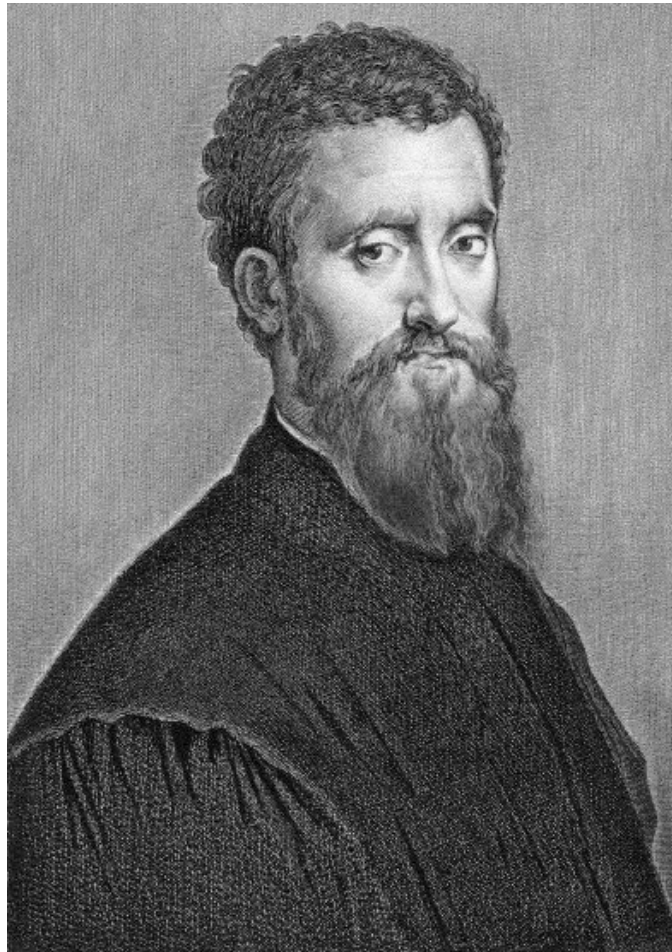
S. Geminiano na Piazza di S. Marco – zničeno za  
Napoleona

S. Francesca della Vigna - 1534 – dokončil  
Palladio

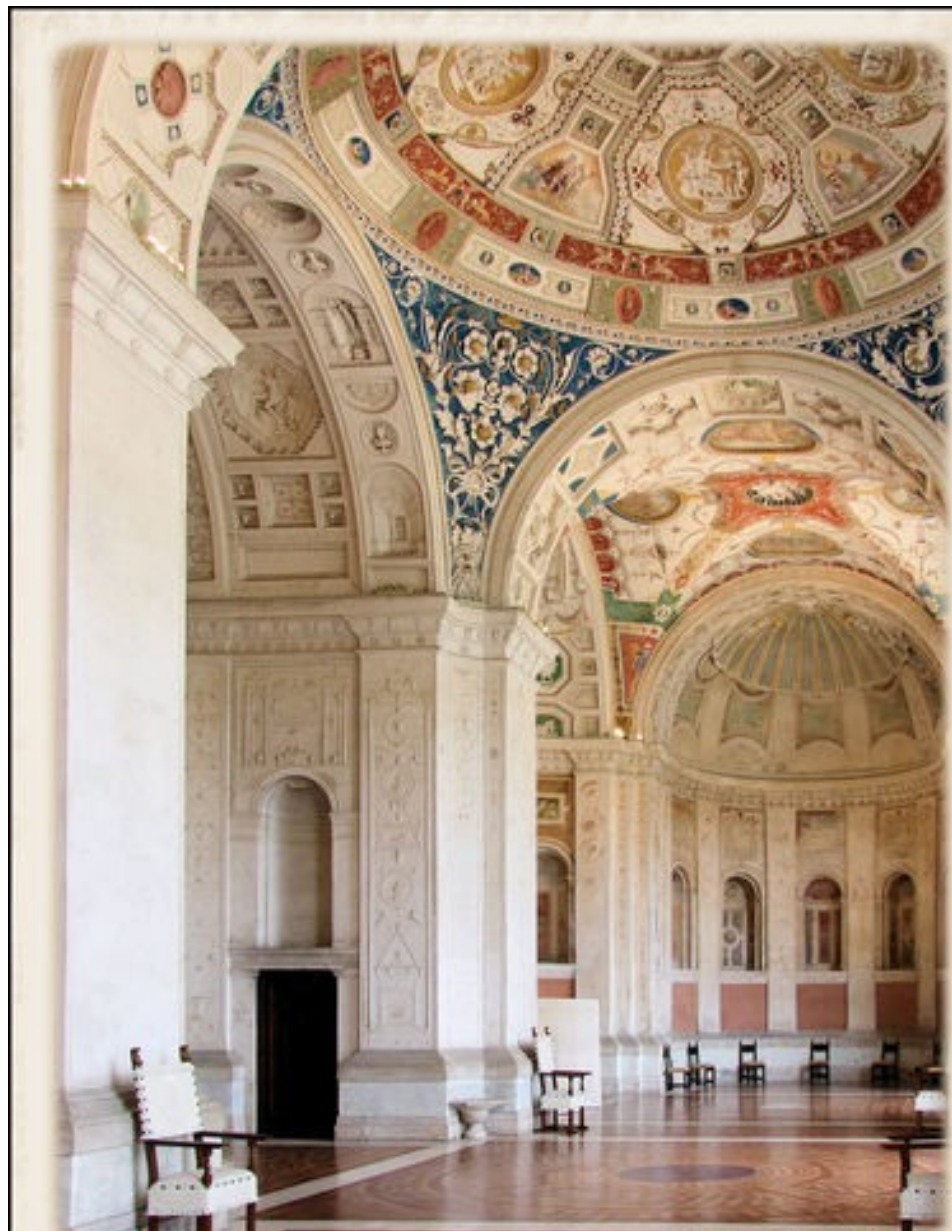
Fasáda S. Giuliano, 1553-1555

– Scuola Grande della Misericordia – od 1532,  
nikdy nedokončeno

# Giulio Pippi či Giuliano Giannuzzi zvaný Romano (1499–1546)



# Villa Madama - Loggie: výzdoba: Giulio Romano a Giovanni da Udine

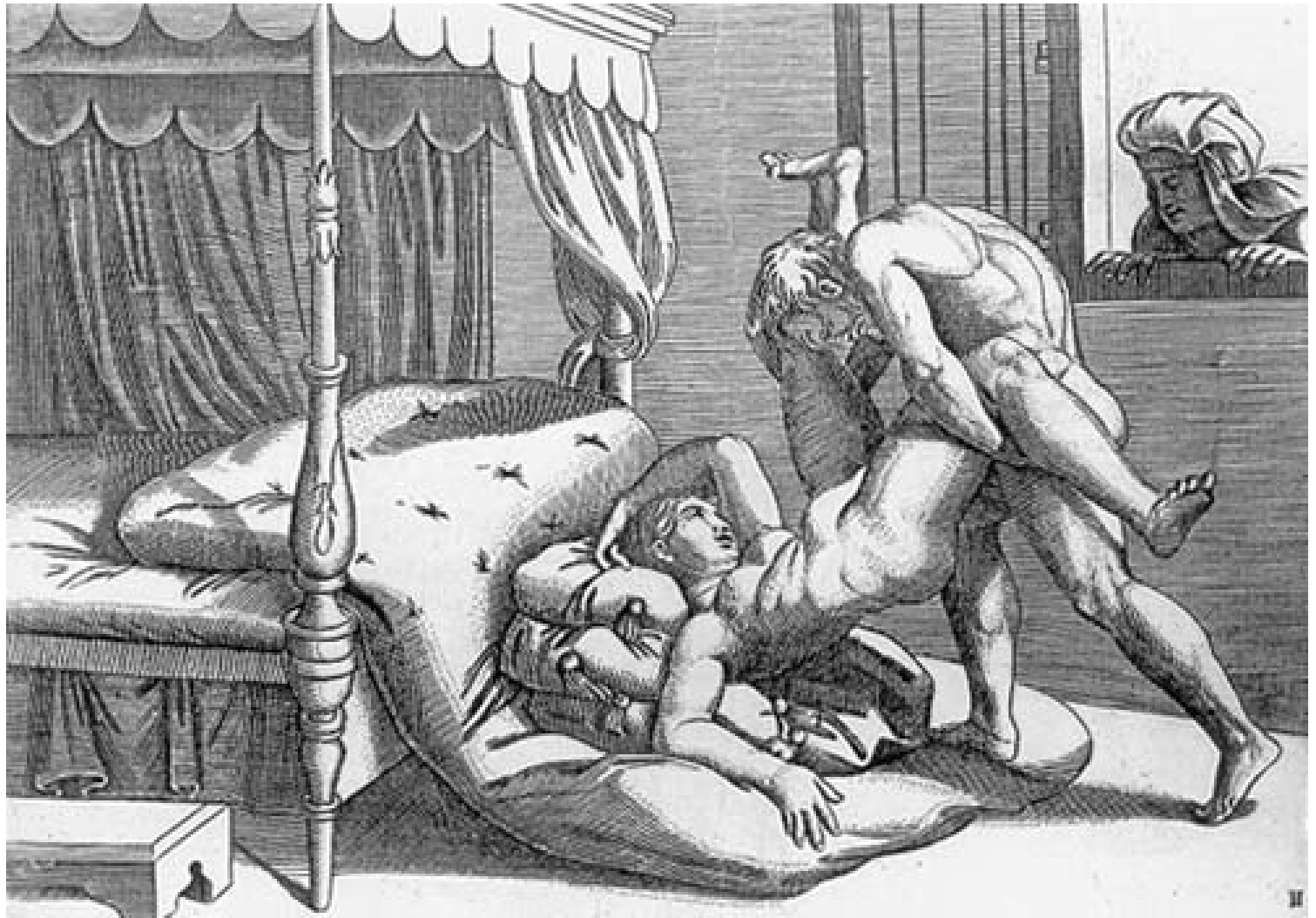






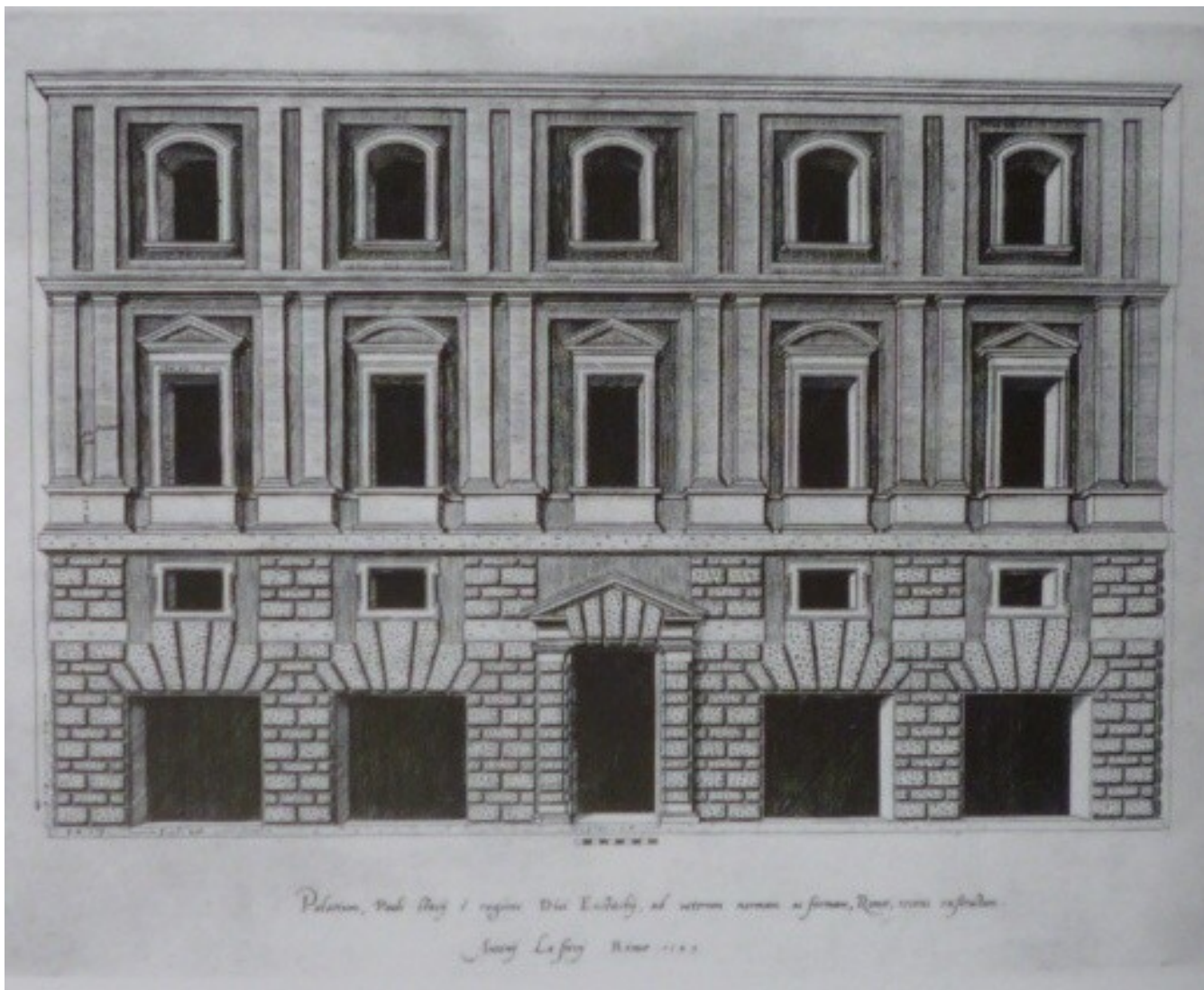




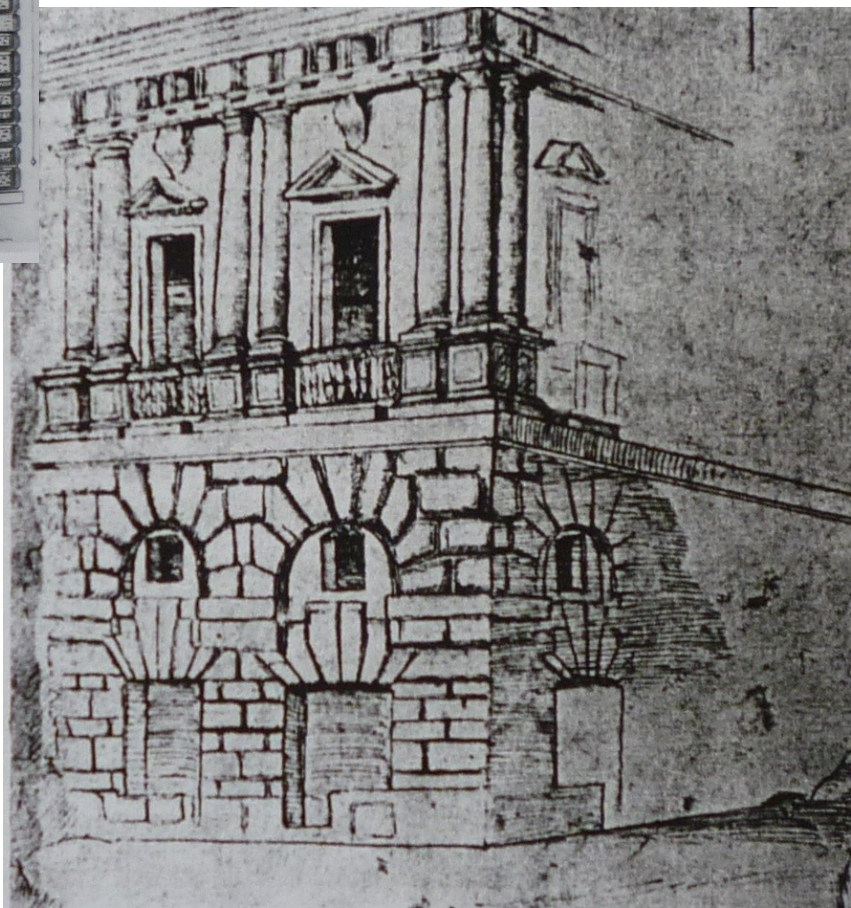
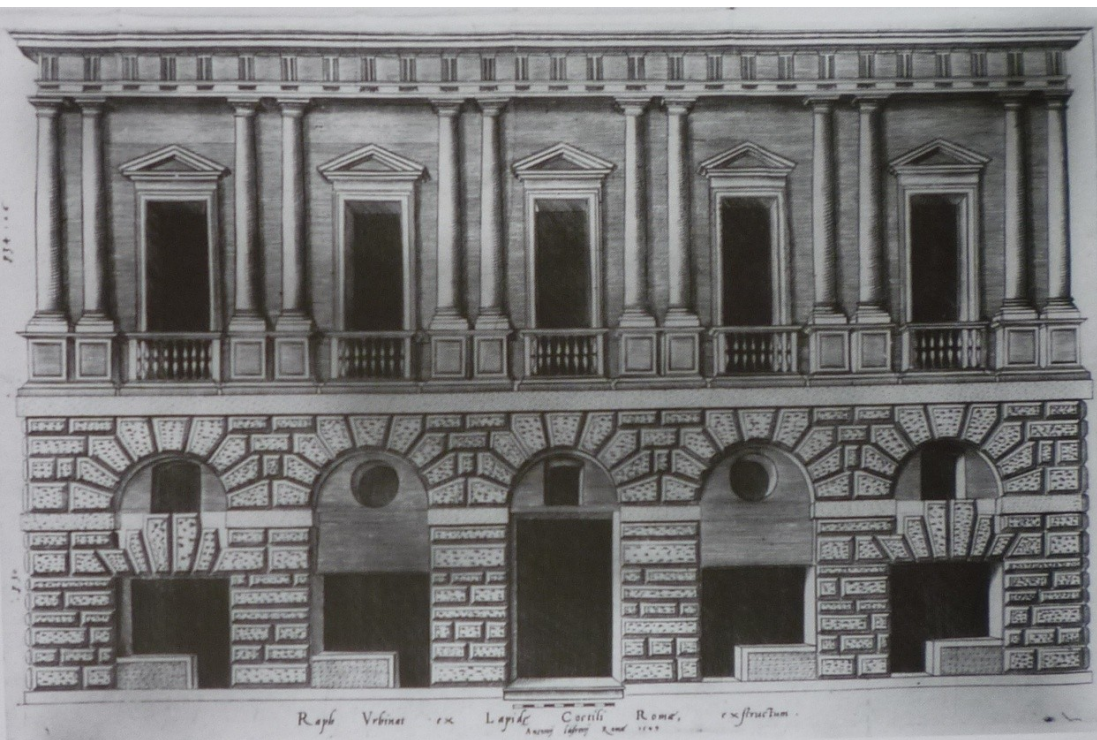


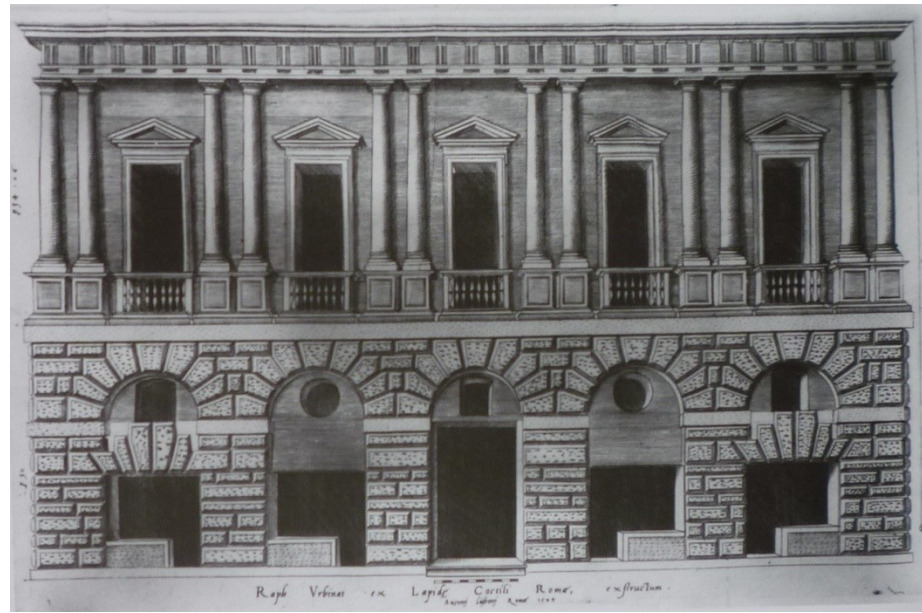
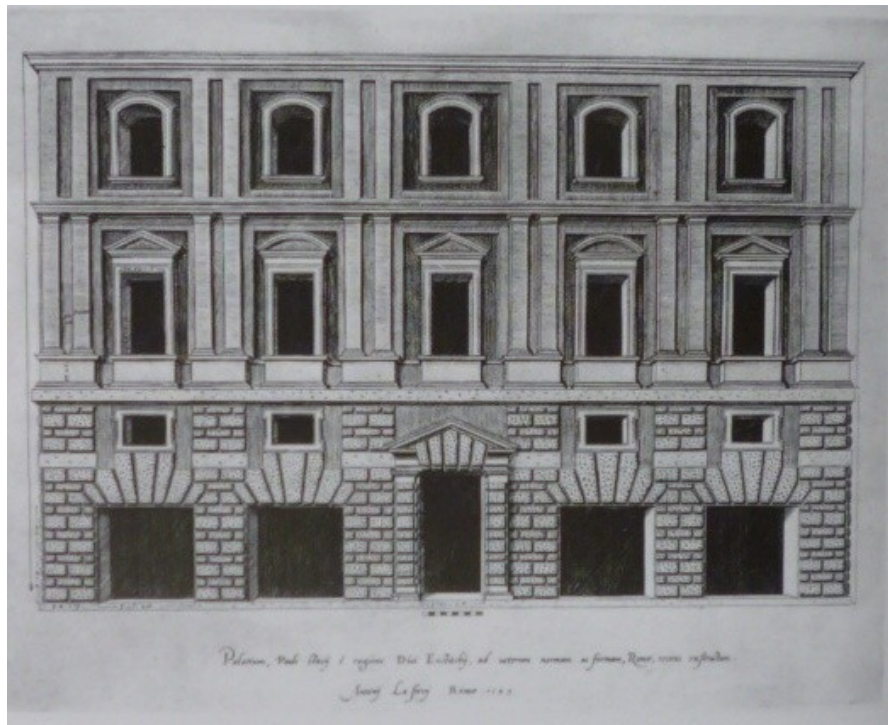
- Palazzo Adimari Salviati, Řím, kol. 1520 – později přestavěno
- Villa Lante na Janikulu, od 1520/1521 – nyní Finská akademie
- Palazzo Maccarani na Piazza S. Eustachio v Římě, od 1522/1523 (nyní Palazzo di Brazza)

Palazzo Maccarani na Piazza  
S. Eustachio v Římě, od 1522/1523

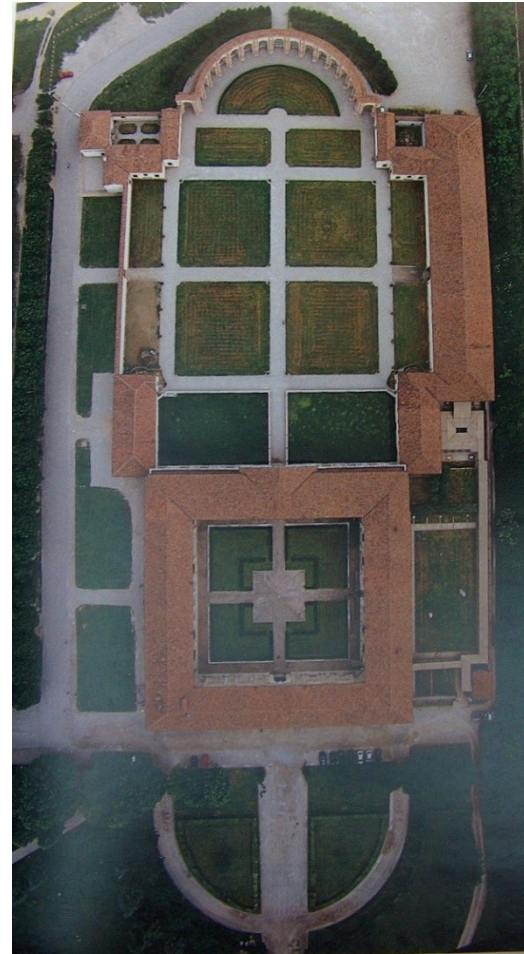


Řím, Palazzo  
Caprini, kolem  
1510

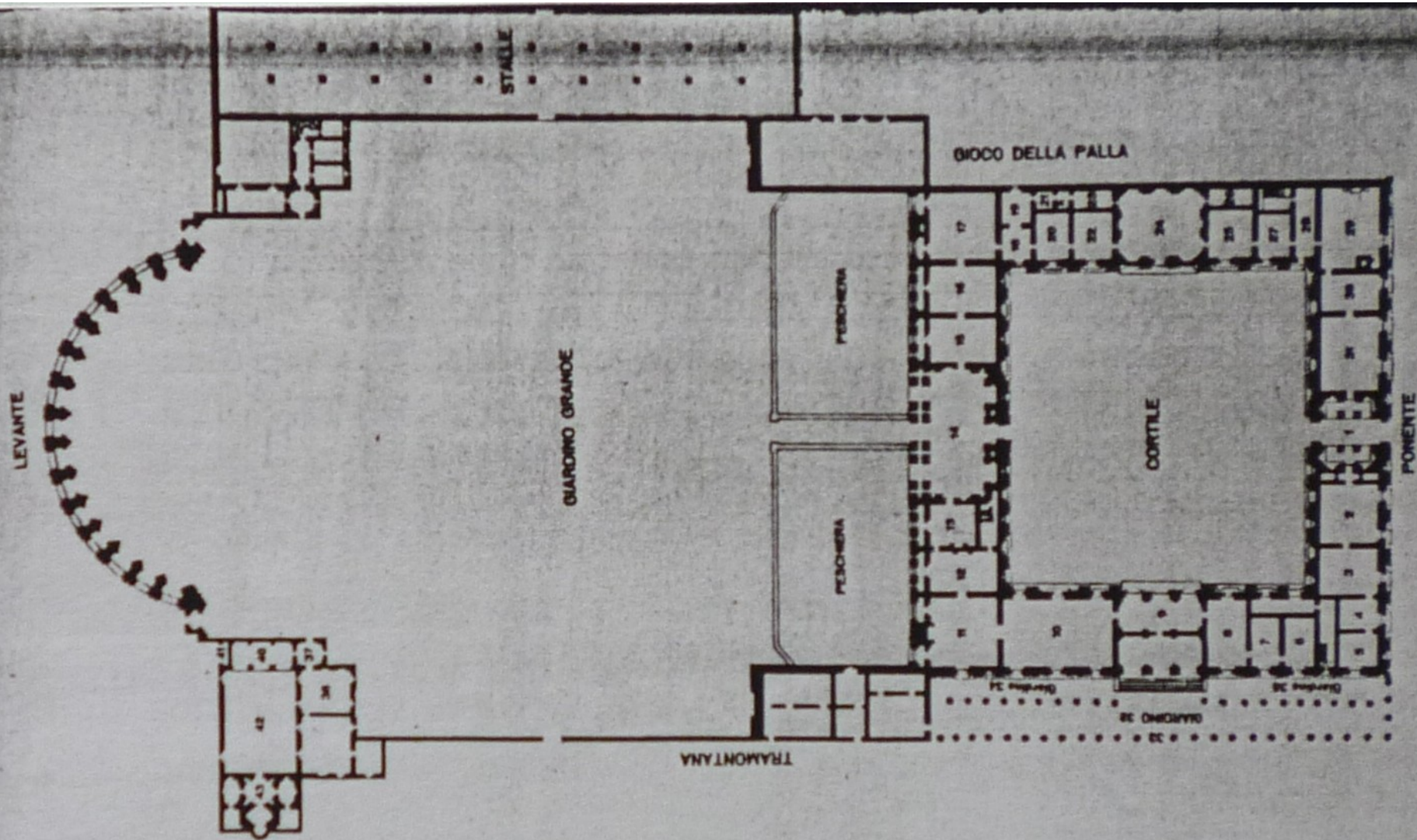




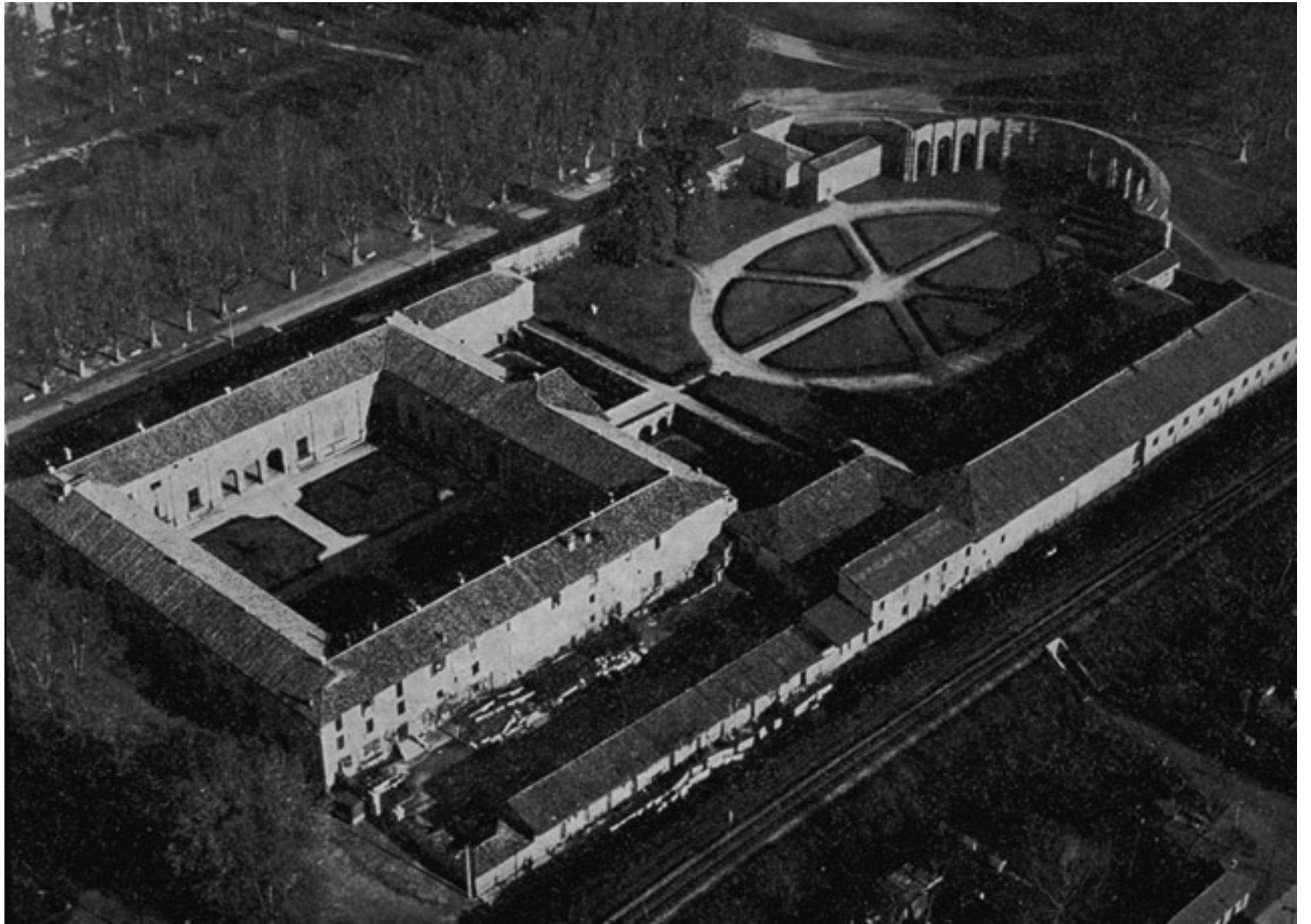
Mantova, Palazzo del Té: kol. 1526-1534 (pro Federiga II. Gonzagu)

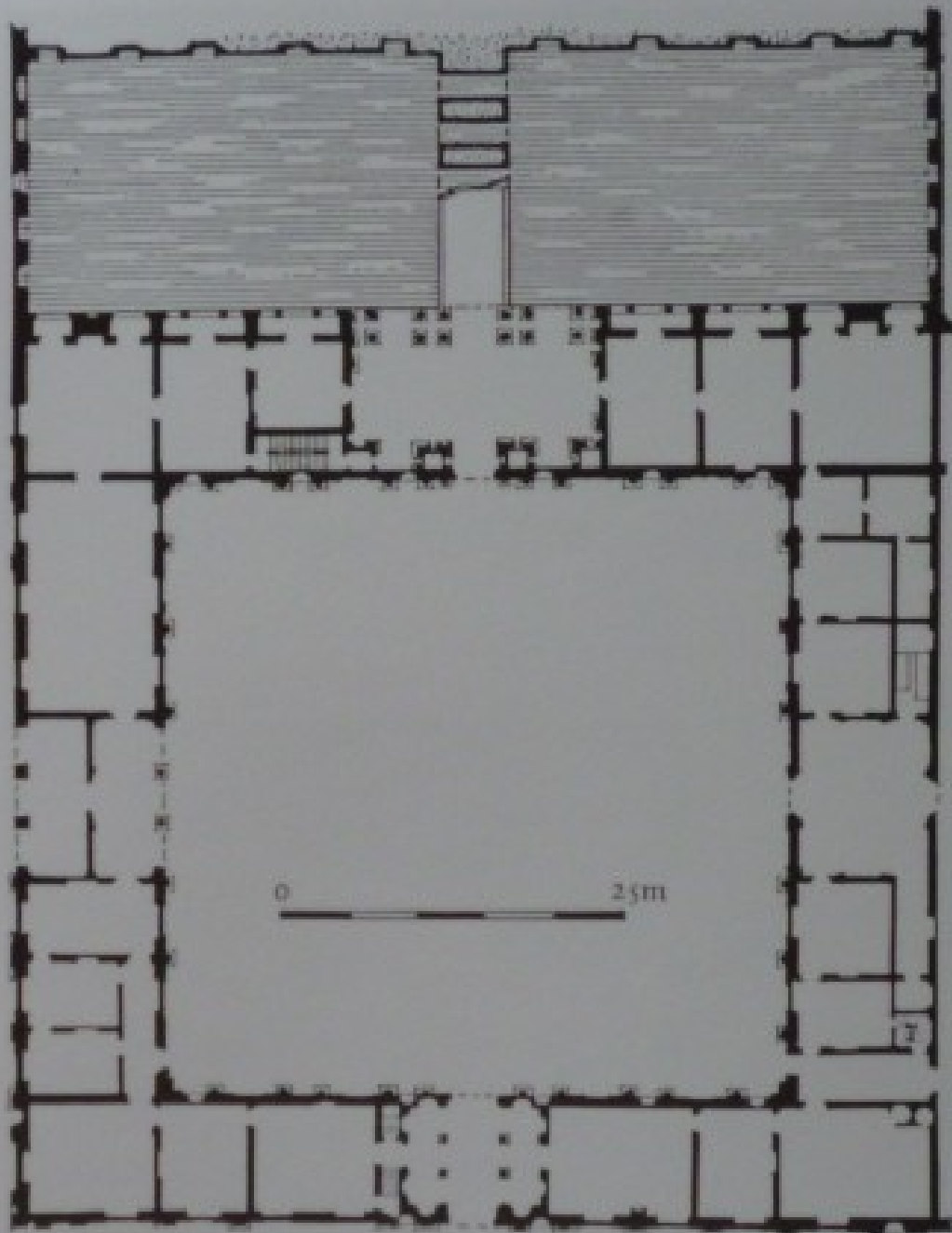




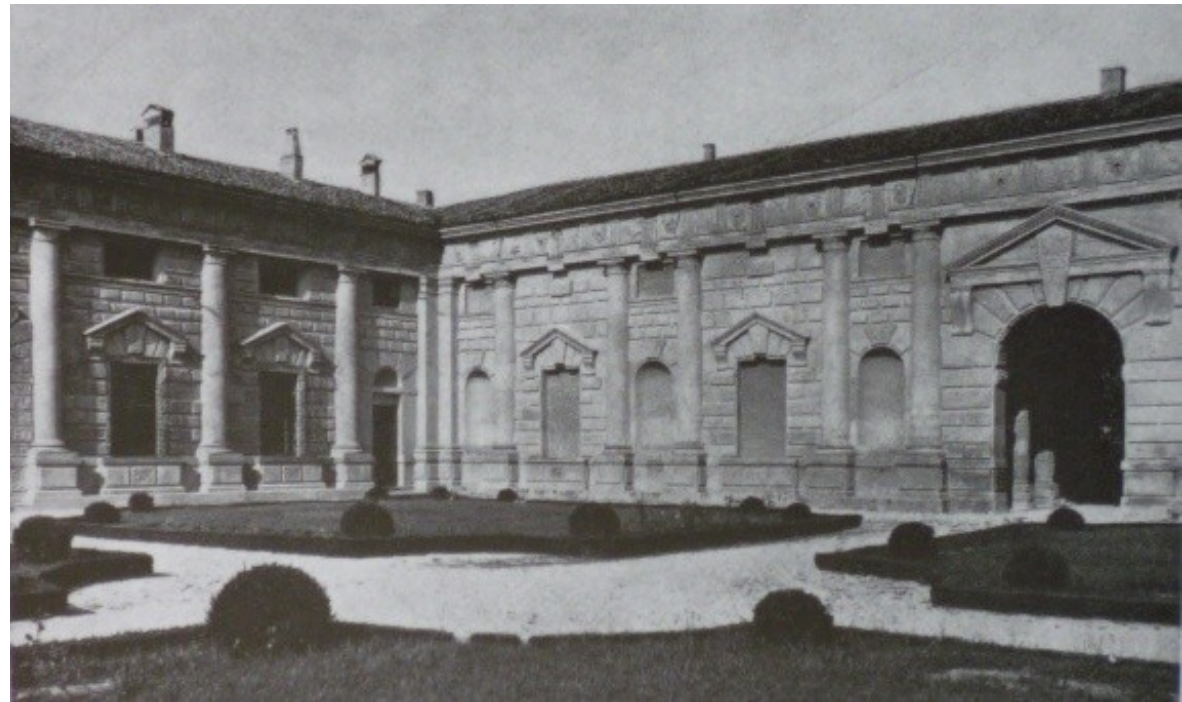


102 Mantua, Palazzo del Tè. Giulio Romano, c. 1526–34. Plan





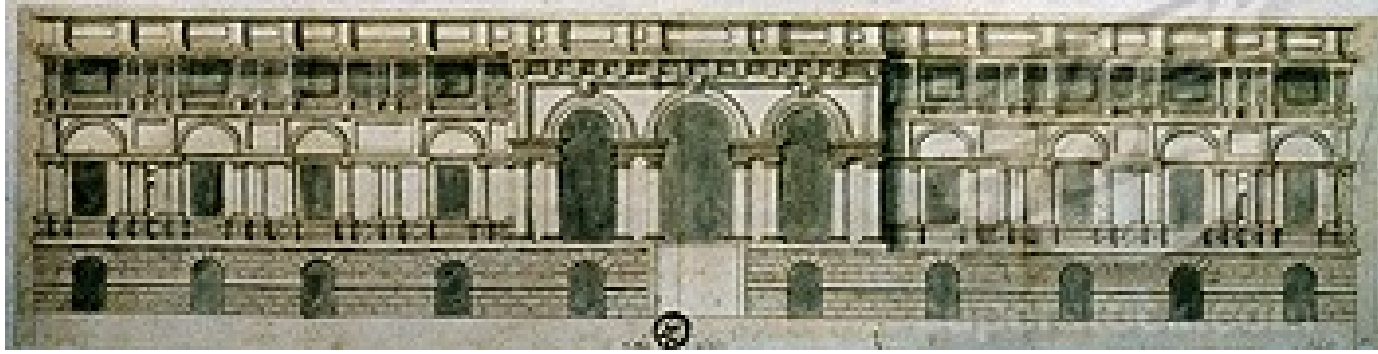
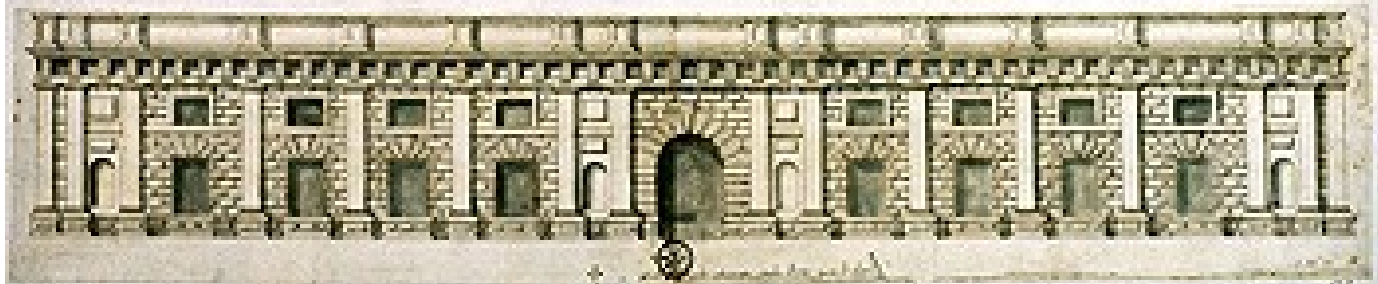
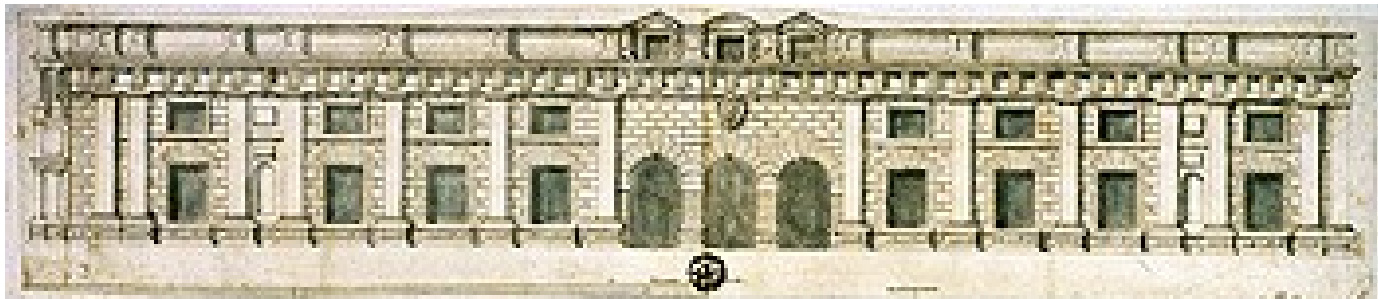
114. Giulio Romano: Mantua, Palazzo del Te, piano superiore.









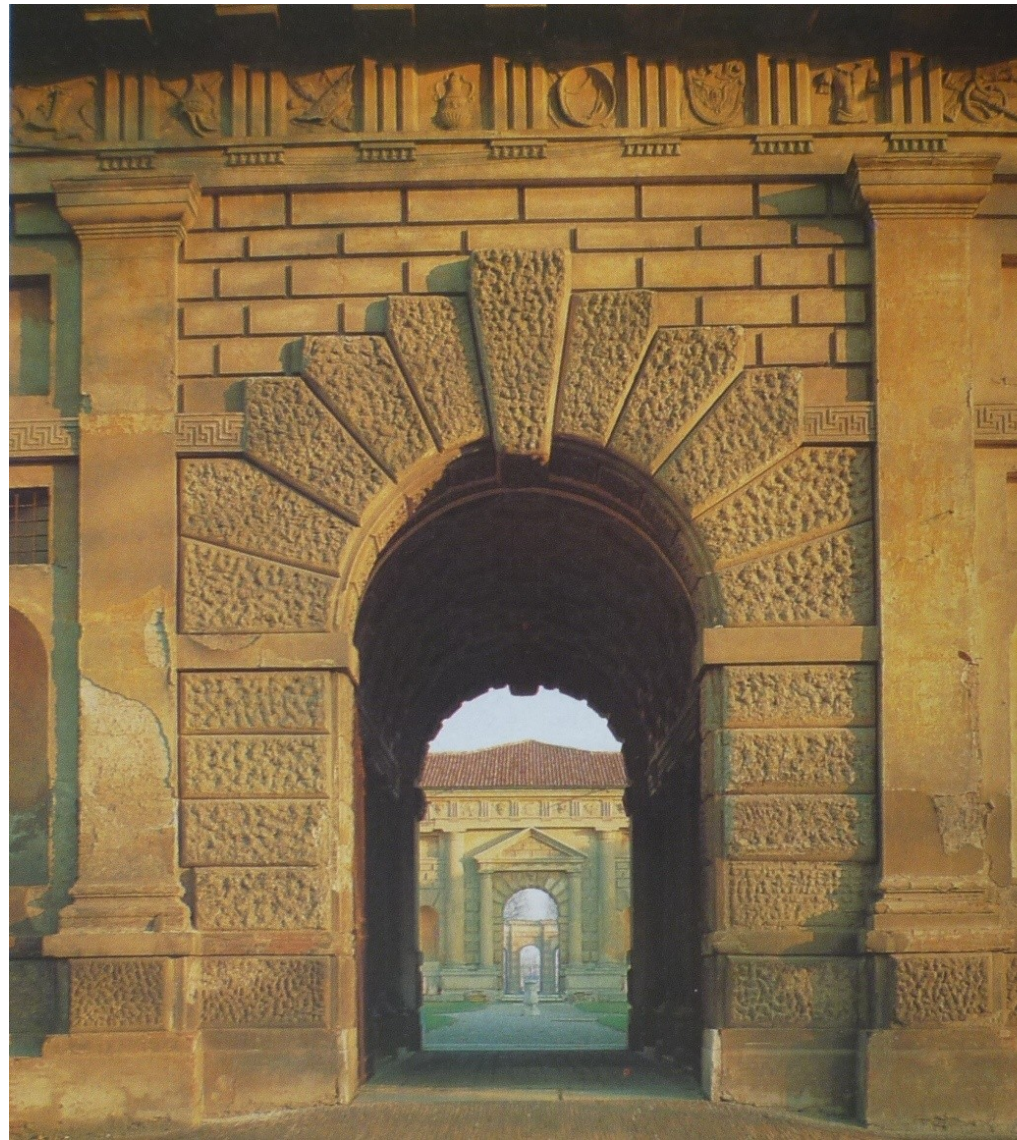






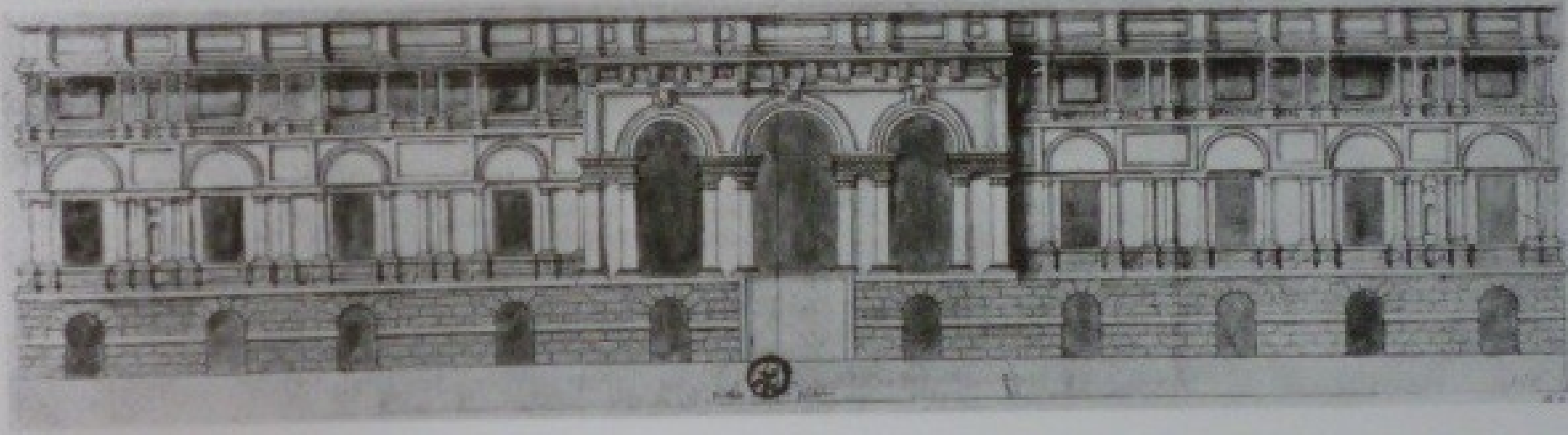








116. Giulio Romano: Mantua, Palazzo del Te, begun 1525, garden façade, drawing, c. 1570. Düsseldorf, Kunstmuseum (FP 10922)













# Loggia del Muse



# Stanza del Sole





# Sala di Psyche





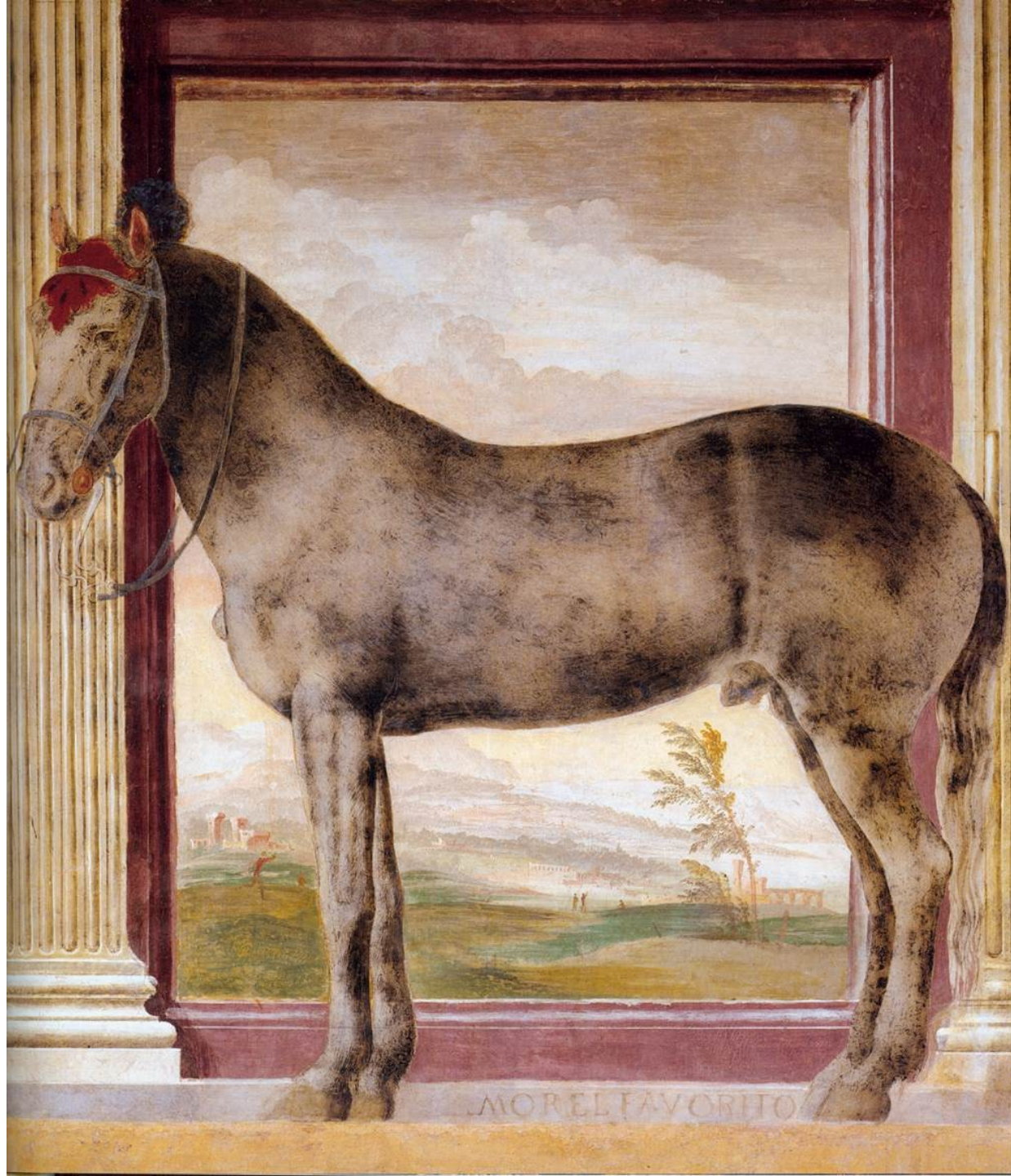




# Sala dei Cavalli







MOREL FAVORITO

## Sala dei Giganti



















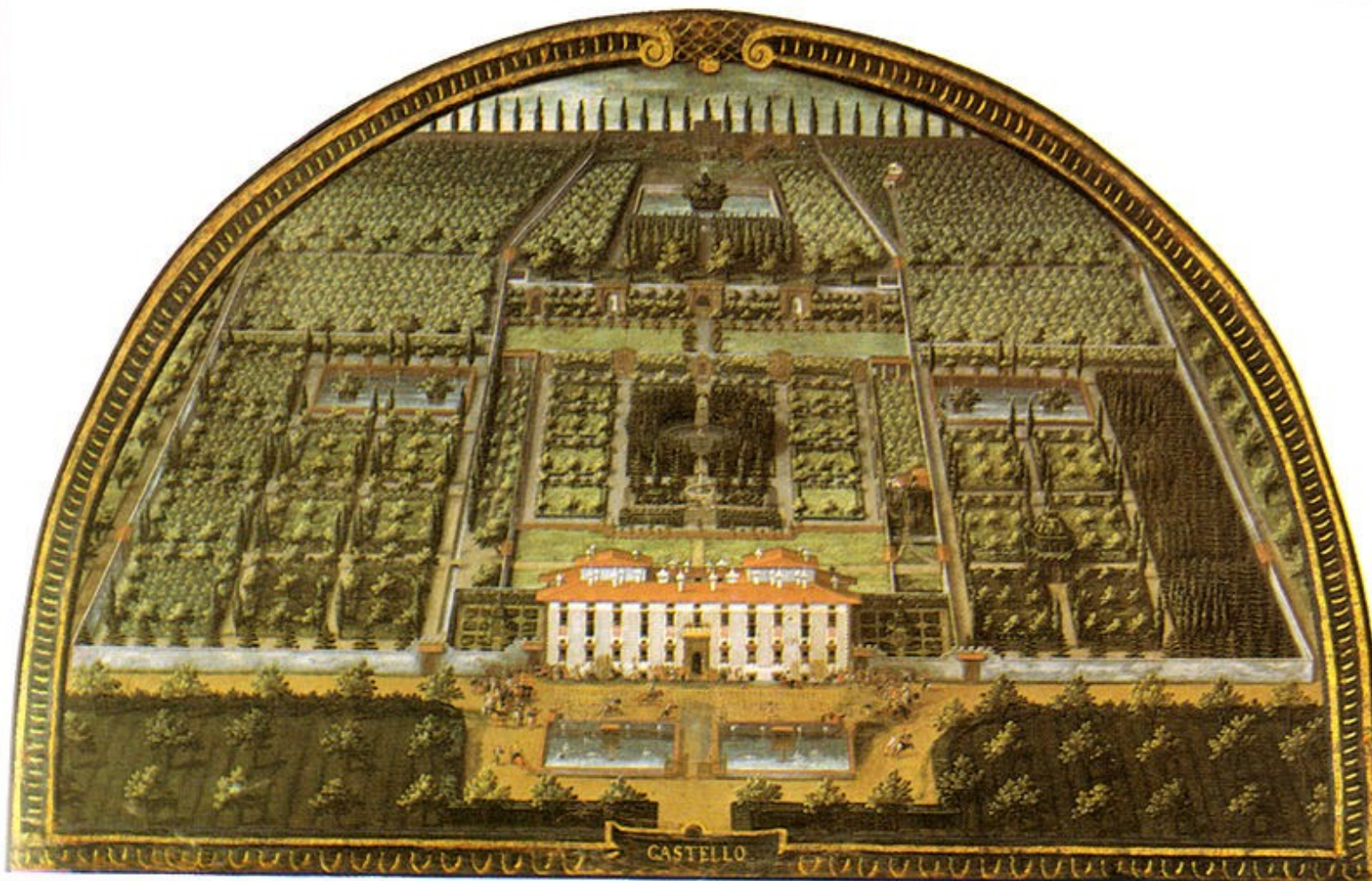






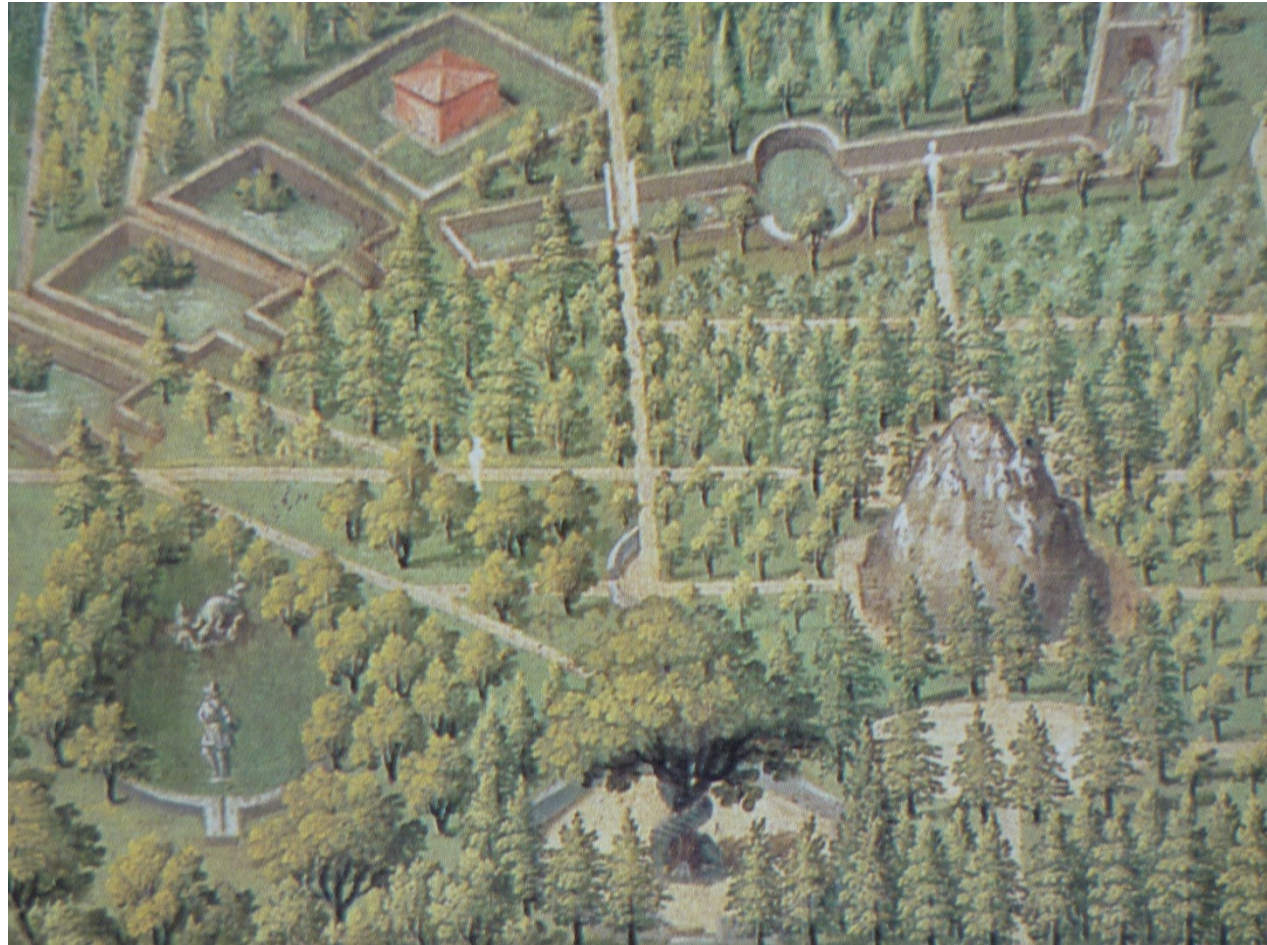


**Villa di Castello u Florencie** – Cosimo I. Medicejský, po 1540  
1560–1570: Niccolò di Raffaello di Niccolò dei Pericoli, zv. Il Tribolo (1500–1550)  
realizované jeho žákem Antoniem Lorenzim









## Giardino Boboli u Palazzo Pitti, Florencie

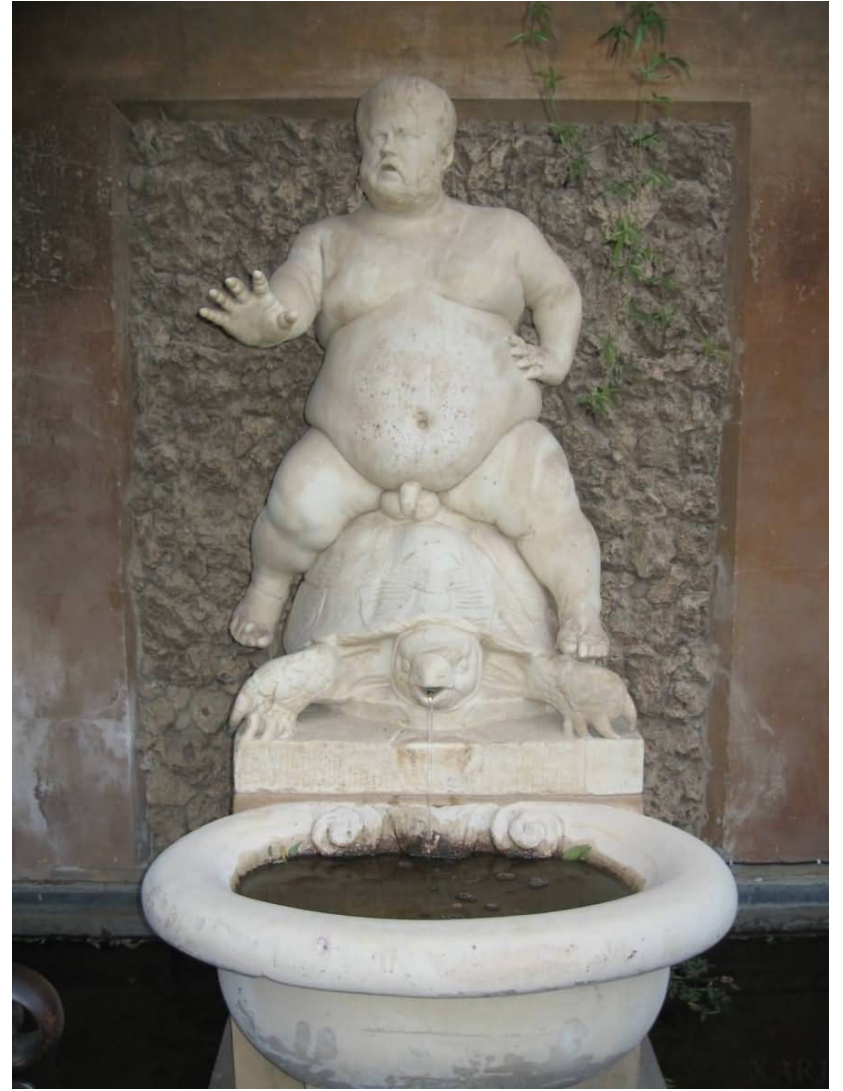
1550 palác koupila Eleonora di Toledo, žena Cosima I. Medicejského: návrh N. Tribola

1550-1558 Bartolomeo Ammanati (spojeno s Palazzo della Signoria)

1579–1587 podle návrhu Bernarda Buontalentiho

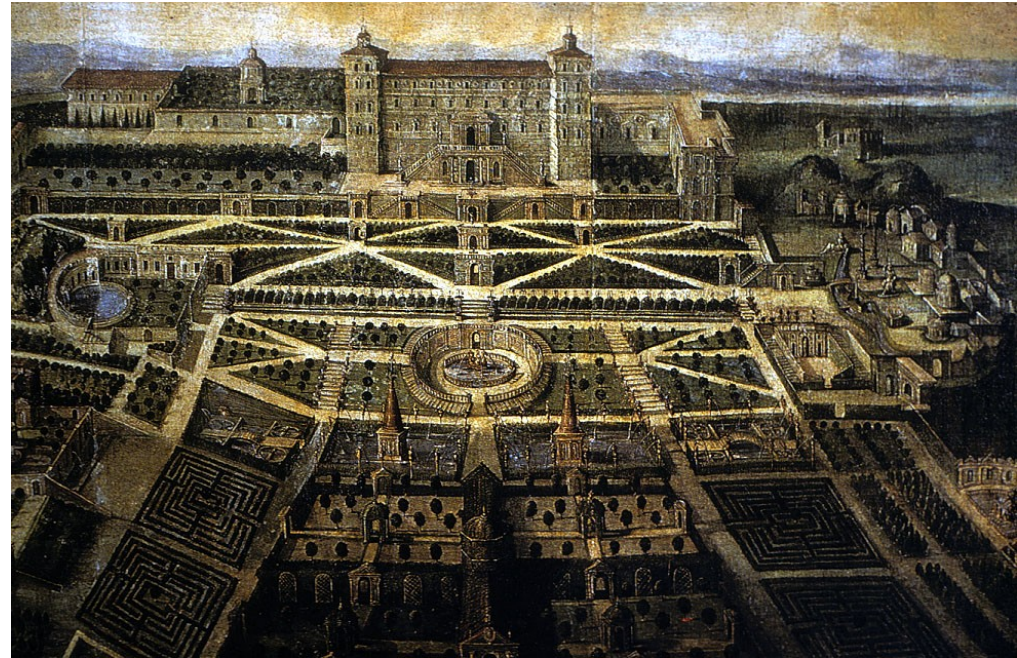
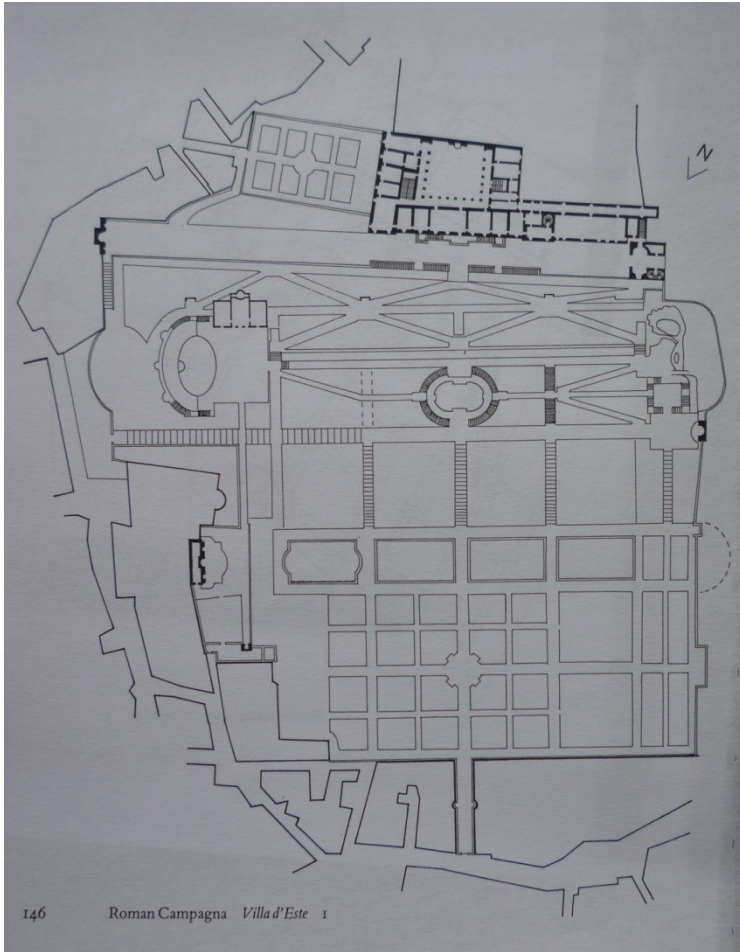






## Villa d'Este

Ippolito II d'Este (1509-1572) ferrarský kardinál (od 1550 guvernérem v Tivoli)  
od 1565 Pirro Ligorio (*Libro delle antichità di Roma*, 1553)













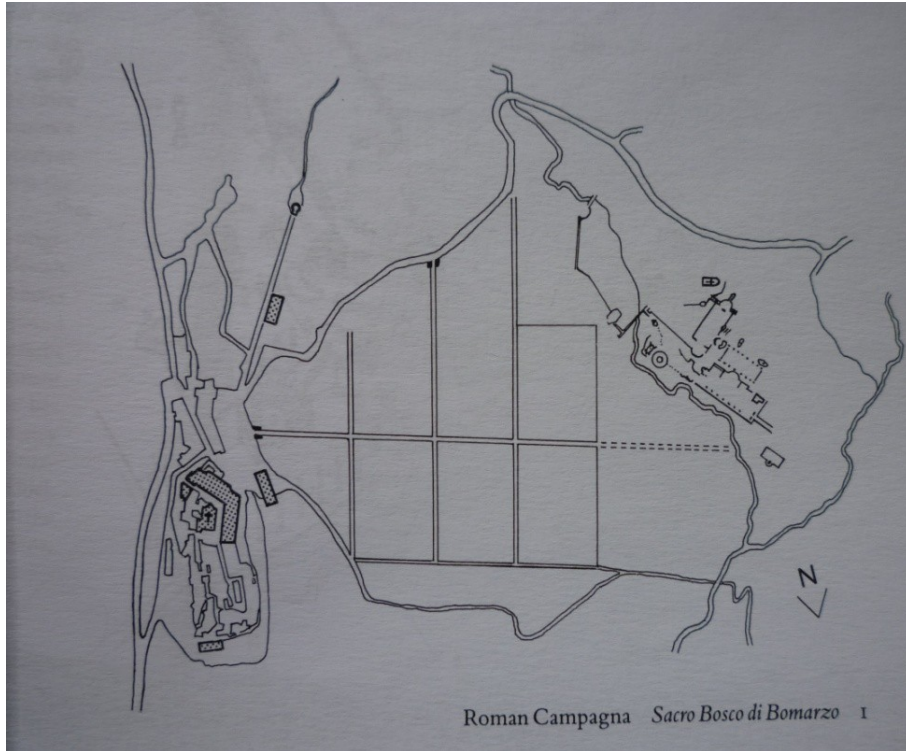




# Sacro Bosco, Bomarzo, Lazio, 1552-1584

Vicino Orsini (Pier Francesco), 1523–1584

sochaři – Raffaello da Montelupo, Fabiano Toti a architekt Simone Moschino









NOBIS ANTI  
ET PROVI  
SACVADAR OVI  
PUBVIA OVI









For  
WEDNESDAY  
APRIL 30, 2014

the sixth largest economy in the world. We have more millionaires than ever before...  
DLT SHOCK  
He's charged with 'sex attack on Mrs Merton Show'

DAILY  
**Mirror**  
SHAME OF CONDEM CUTS  
Britain, 2014. We're the sixth largest economy in the world. We have more millionaires than ever before...

So why have we handed out  
**ONE MILLION** food parcels?  
AND NEW FIGURES REVEAL 330,000 WENT TO HUNGRY CHILDREN... SHOCK REPORT PAGES 4&5

CONDEM CUTS  
He's charged with 'sex attack on Mrs Merton Show'

the sixth largest economy in the world. We have more millionaires than ever before...

So why have we handed out  
**ONE MILLION** food parcels?

Mantova, Palazzo Ducale, Cortile del Cavalerizza – jižní křídlo,  
1538–1539



## Appartamento di Troia, 1536-1539







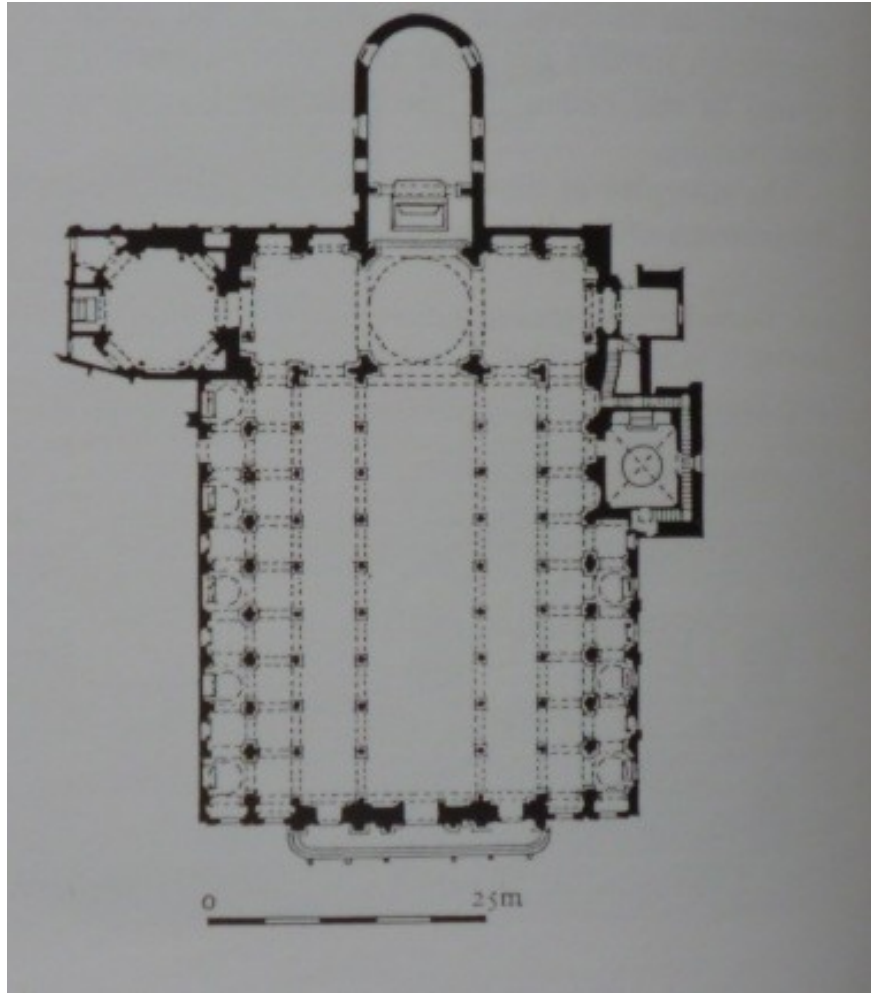


Romanův dům  
v Mantově, kol. 1544





# Katedrála v Mantově – přestavba od 1545





Opatský kostel S. Benedetto v Po (Polinore), od 1540





Benátky, Fabbriche Nuove, 1556



