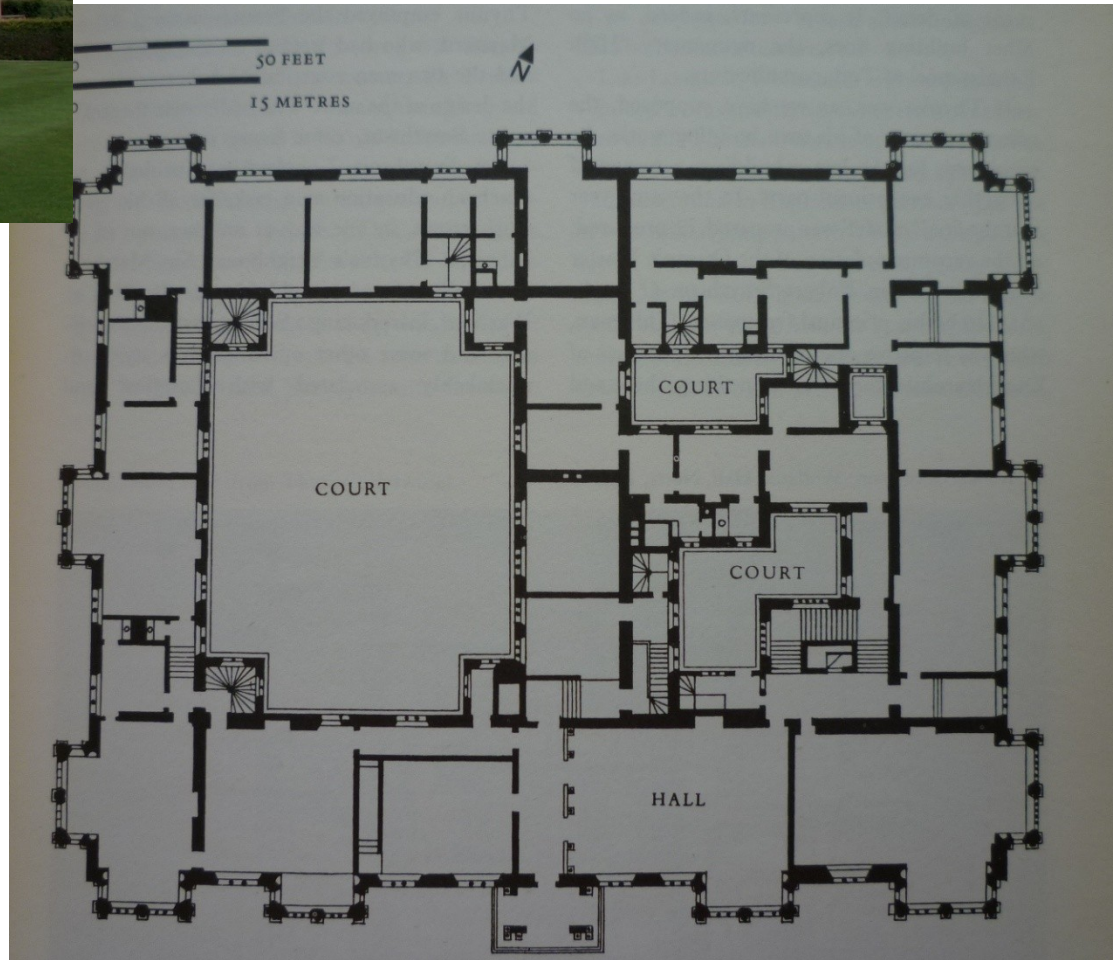


Inigo Jones a počátky palladianismu v Anglii

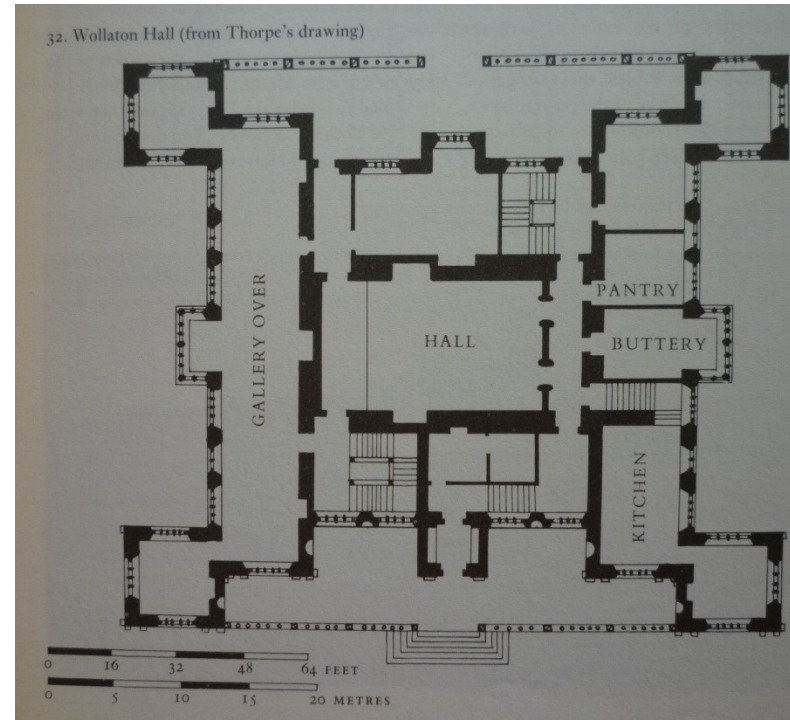
Longleat House, Wilts, 1568-1580 – John Thynne

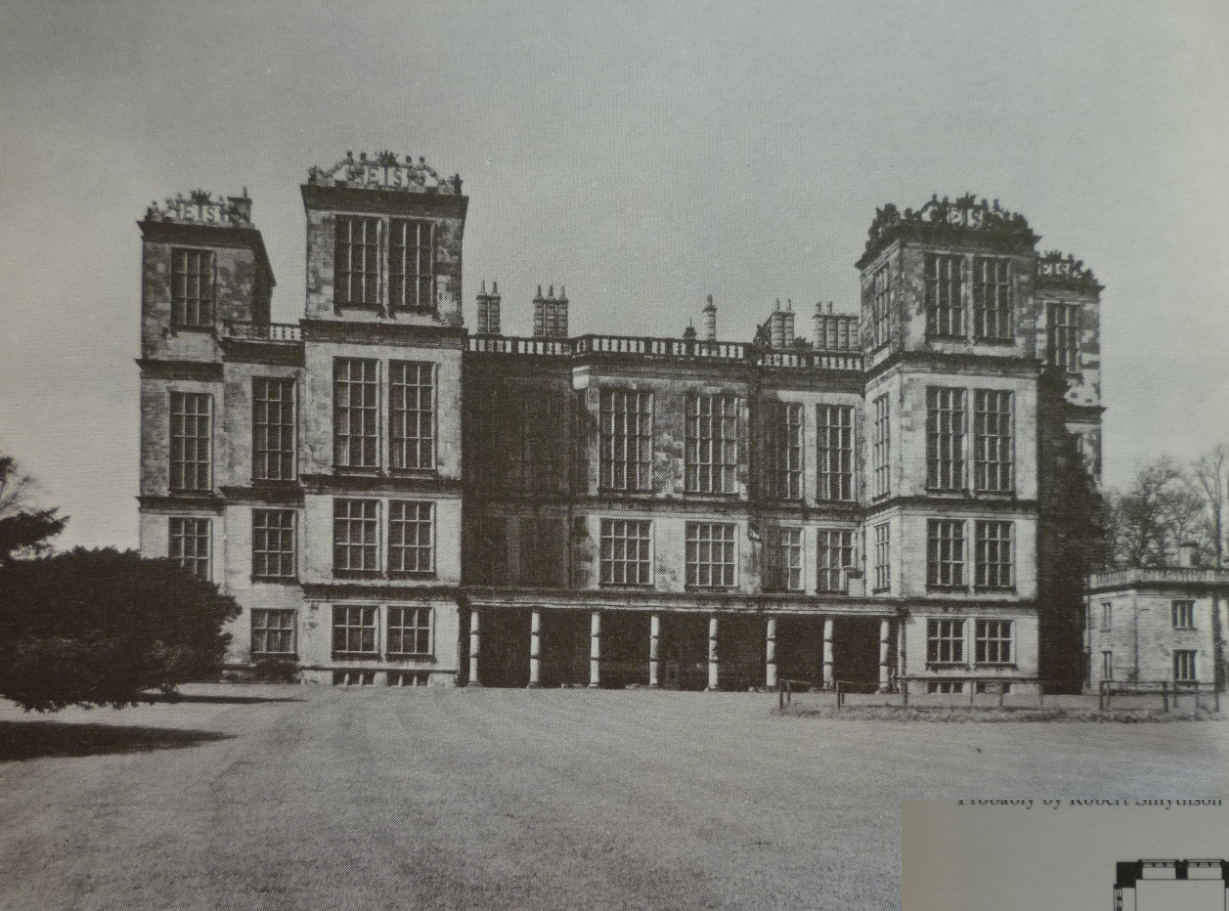






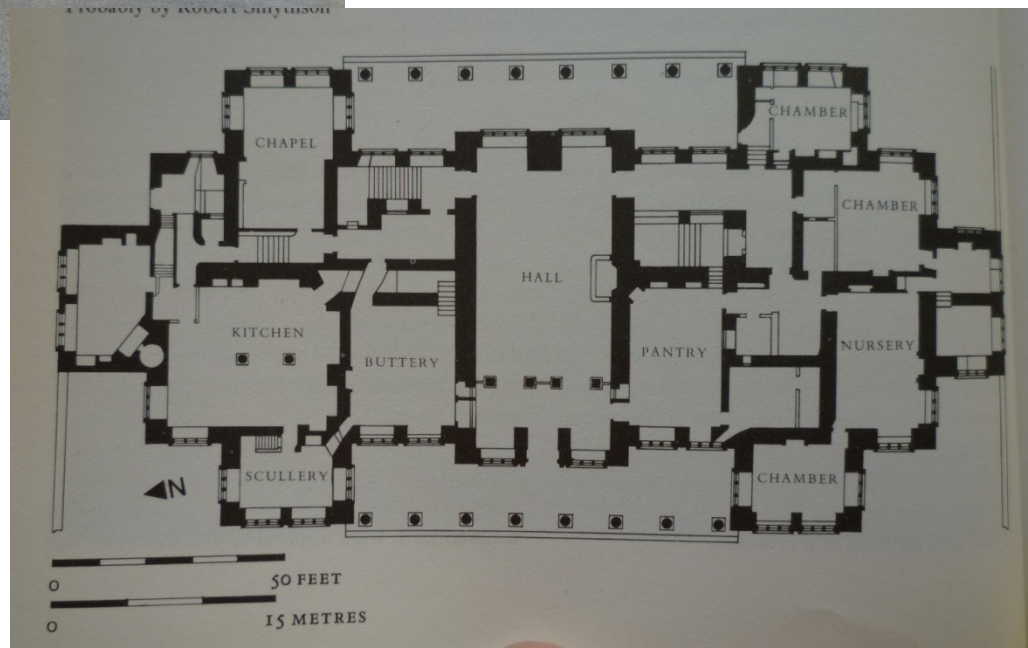
Robert Smythson (Smithson) – kol. 1536 – 1614
Wollaton Hall, 1580-88 – pro Sira Francise Willoughbyho – šerifa kraje
Nottinghamshire

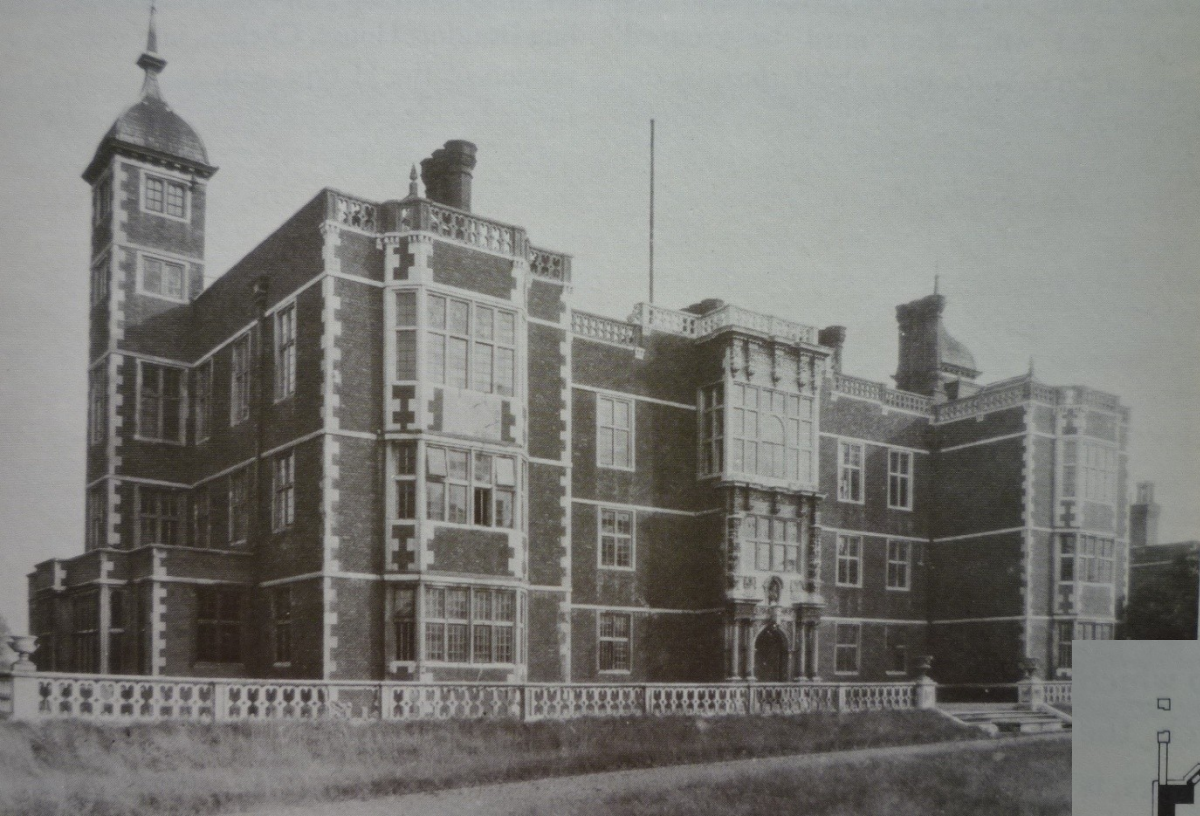




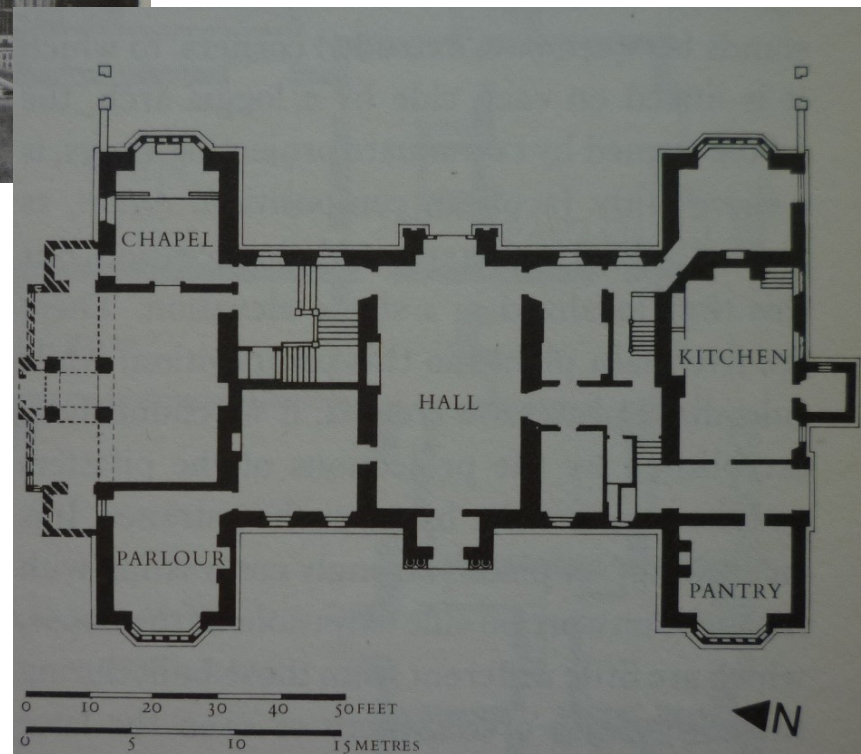
a photograph by ROBERT SMYTHSON

Hardwick Hall, Derbyshire, po 1590





Greenwich, Charlton House, 1607



Audlye End, Essex, 1603-16, projekt Bernard Janssen
Bolsover Castle, Derbyshire, od 1612 John Smythson
vs. Queen's House, Greenwich, Inigo Jones, projekt 1616



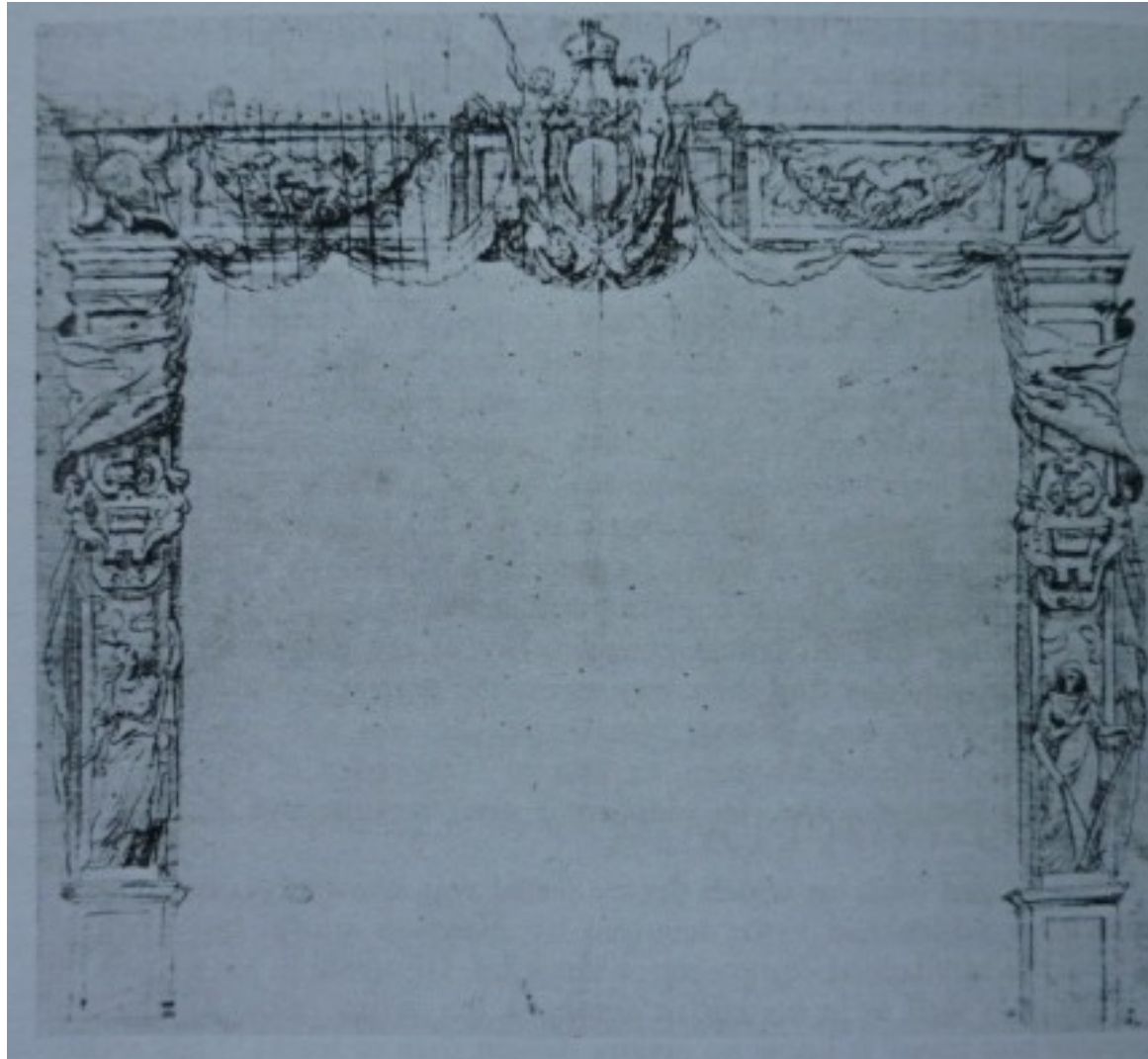
Inigo Jones (1573 – 1652)



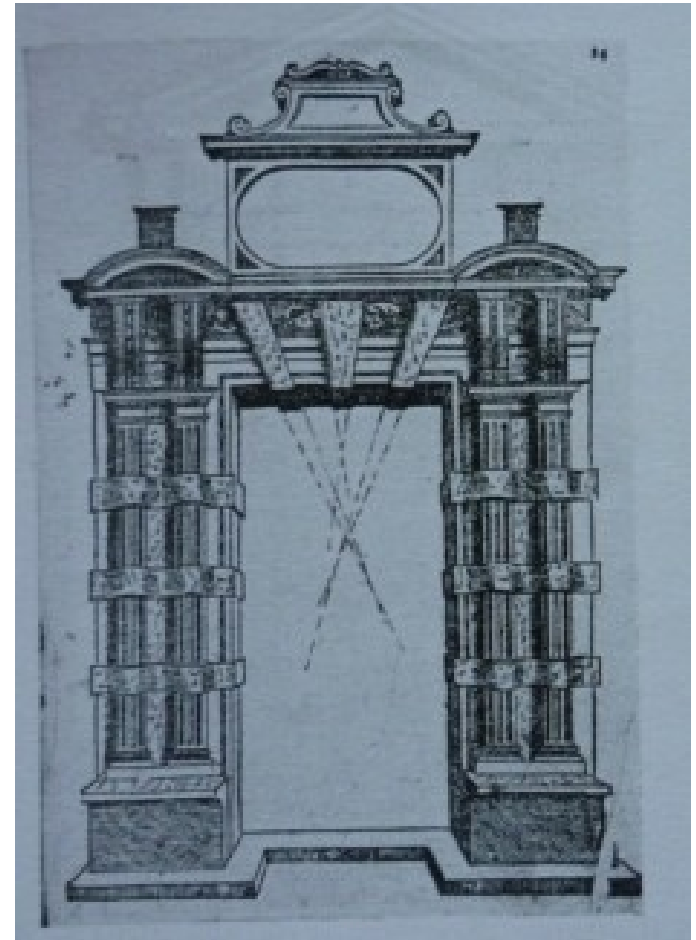
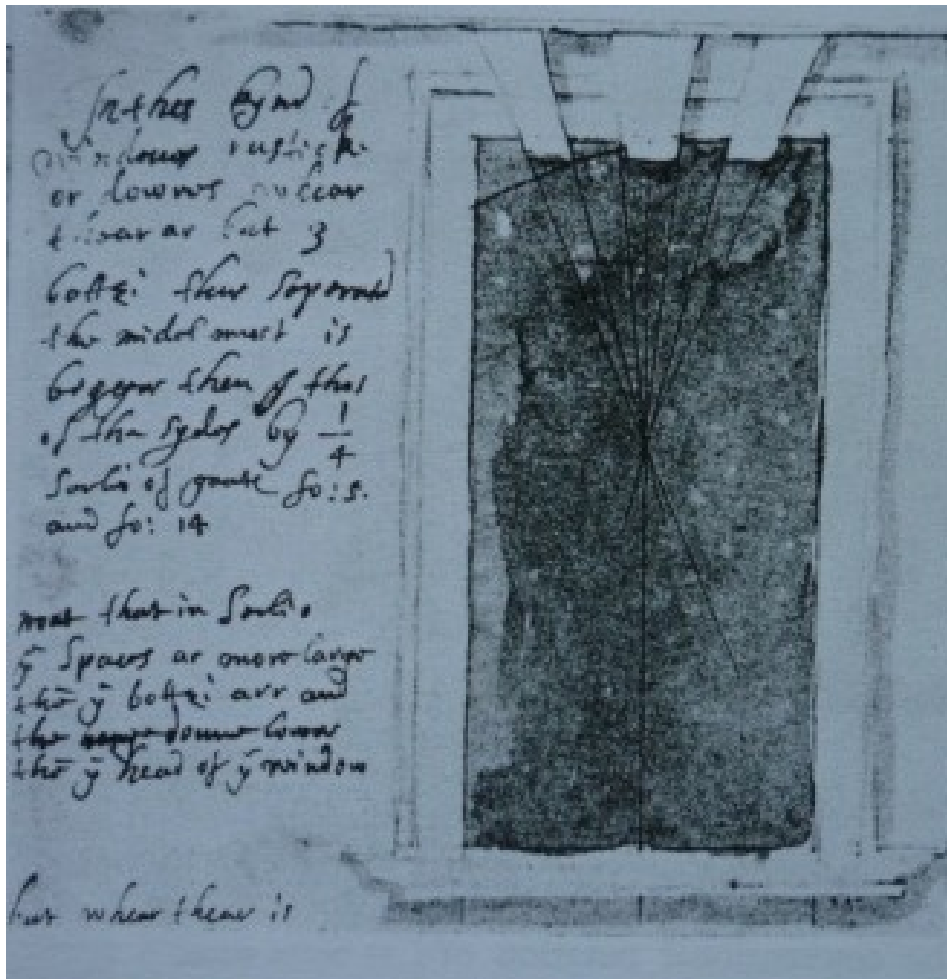
Návrhy pro *masques*, 1610, 1631



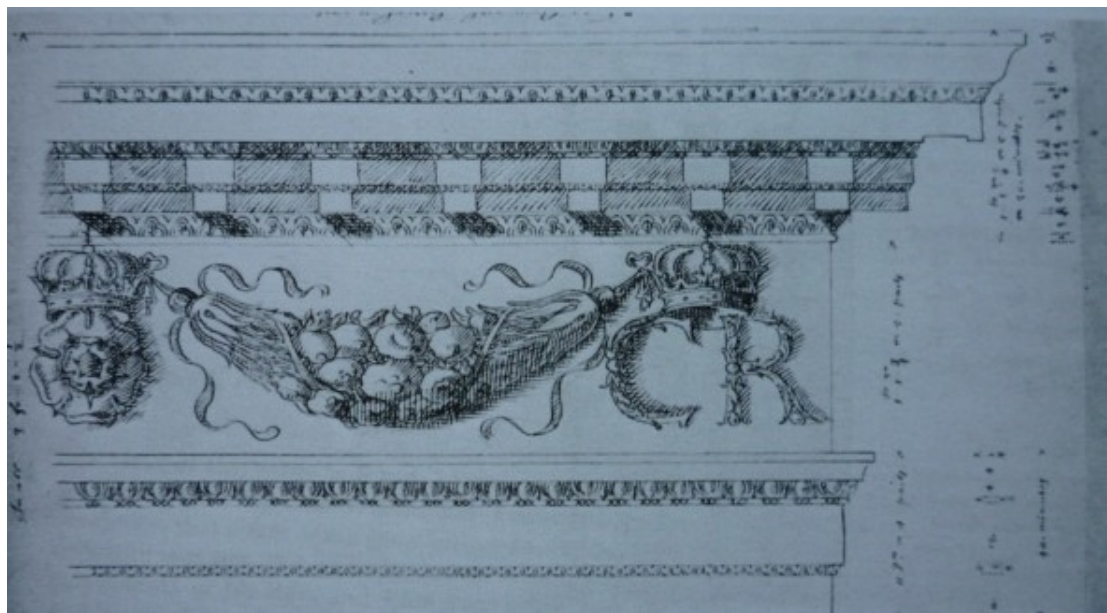
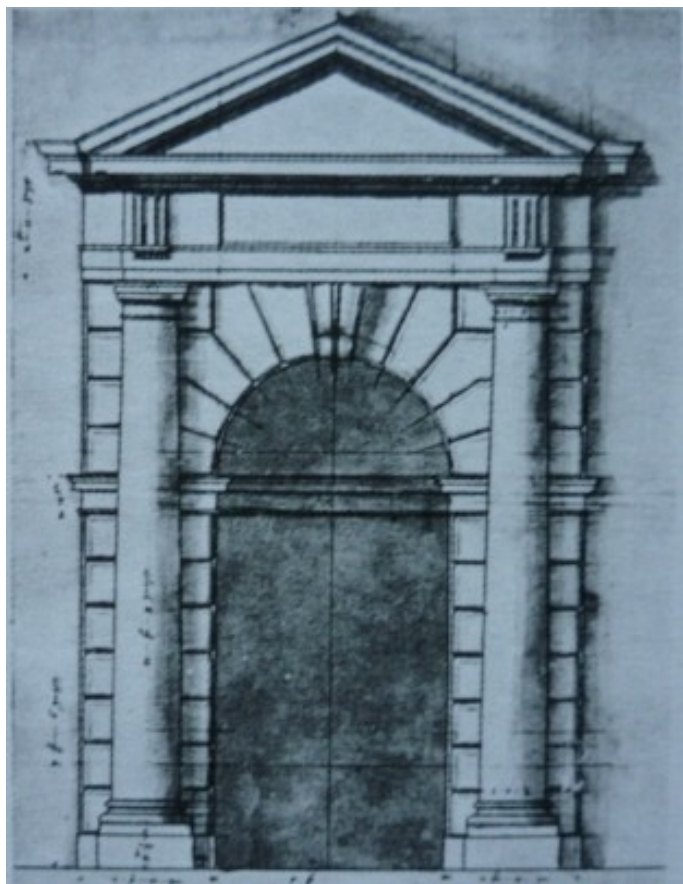
Návrh na proscénium dvorské masque – *Albion's Triumph* – kol. 1630



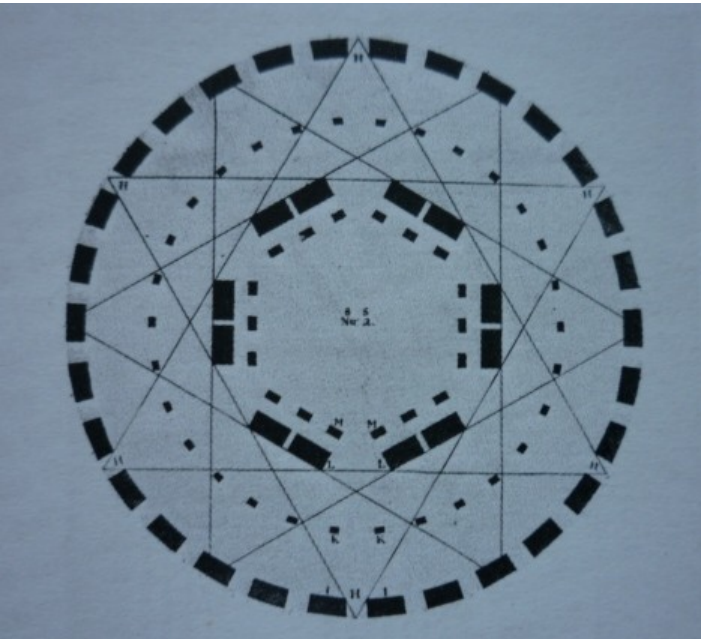
...Jones koriguje Serlia (1618)

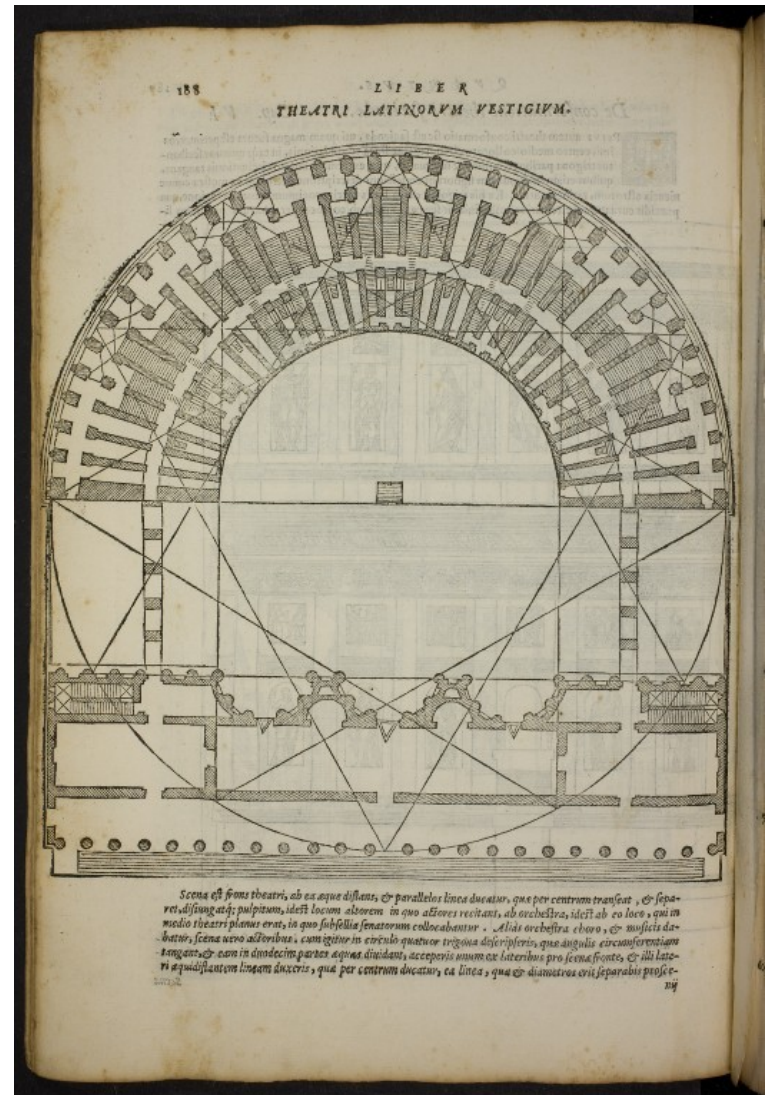
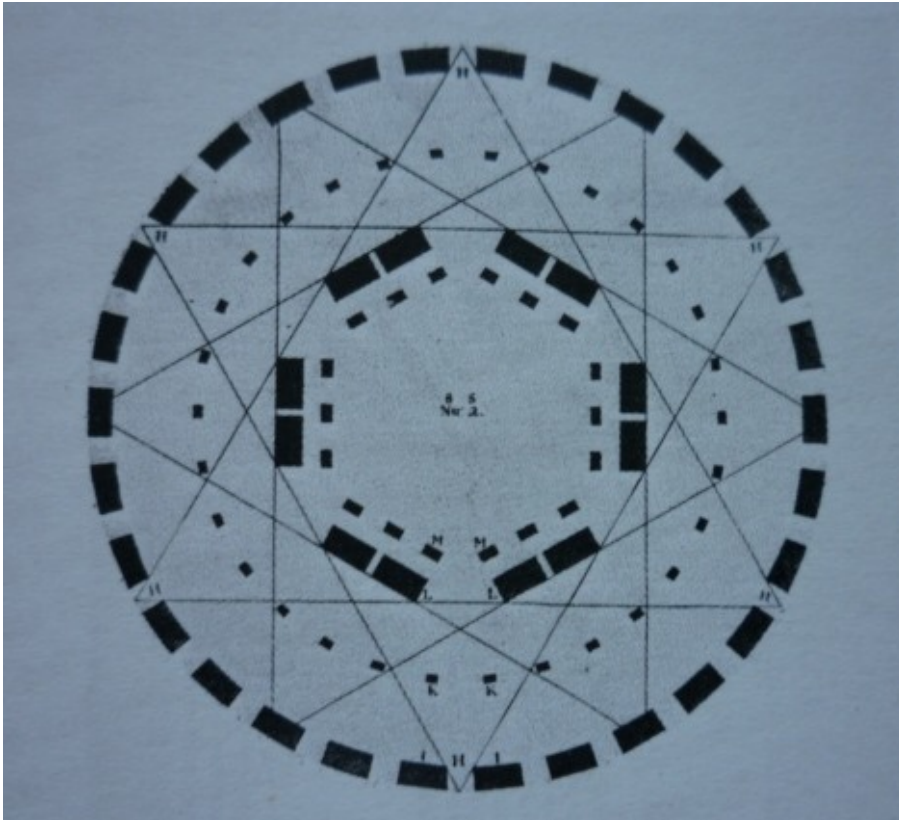


Návrh portálu pro Beaufort House (1620)
John Webb – návrh římsy pro Karlovo křídlo v Greenwichi
(po 1660)









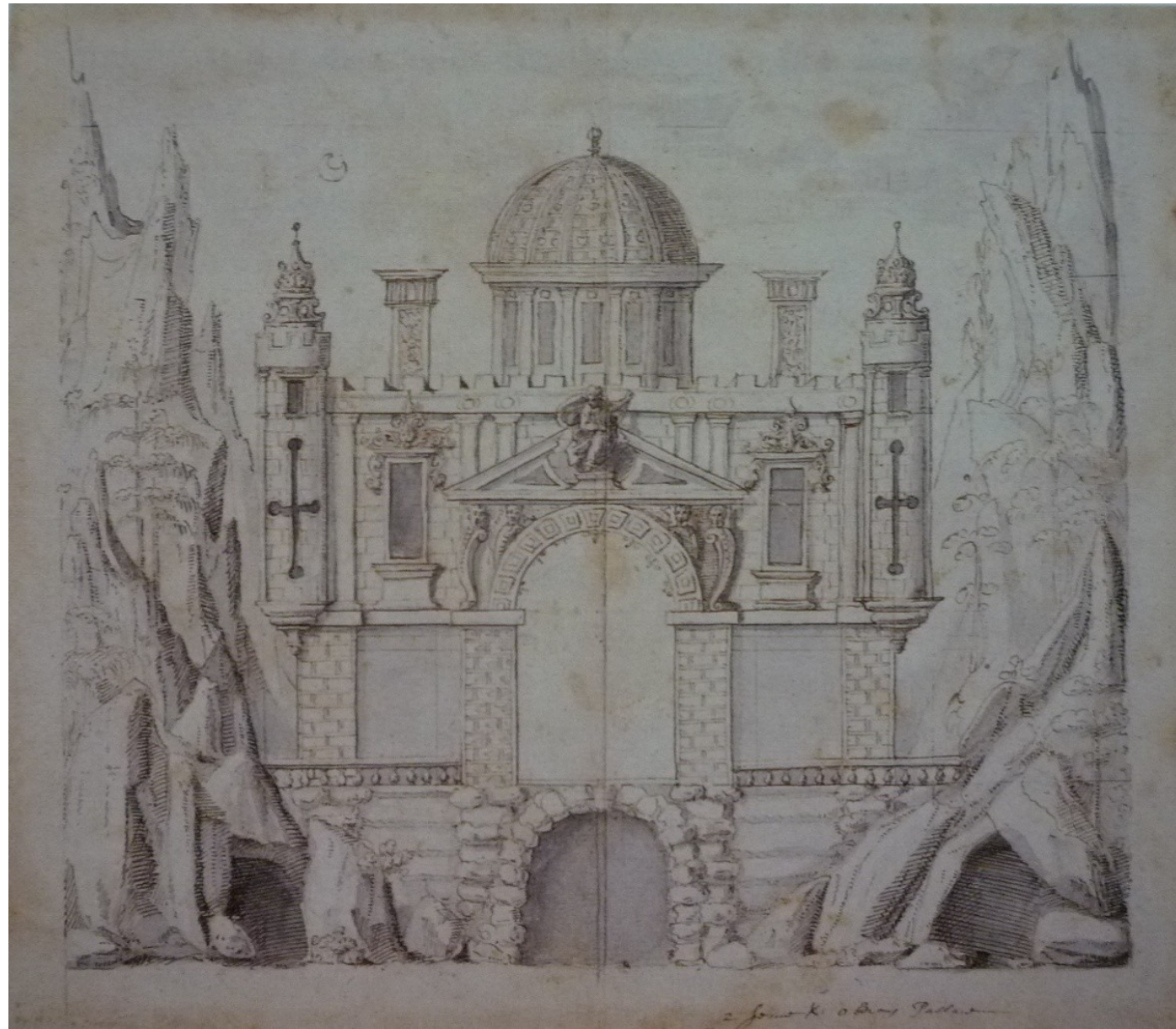
New Exchange, 1608, Strand, Londýn (Lord Salisbury)



Návrh přestavby věže katedrály
sv. Pavla, Londýn, kol. 1608



Oberonův palác, 1610



Návrh portálu Arundelova paláce v Londýně , 1619



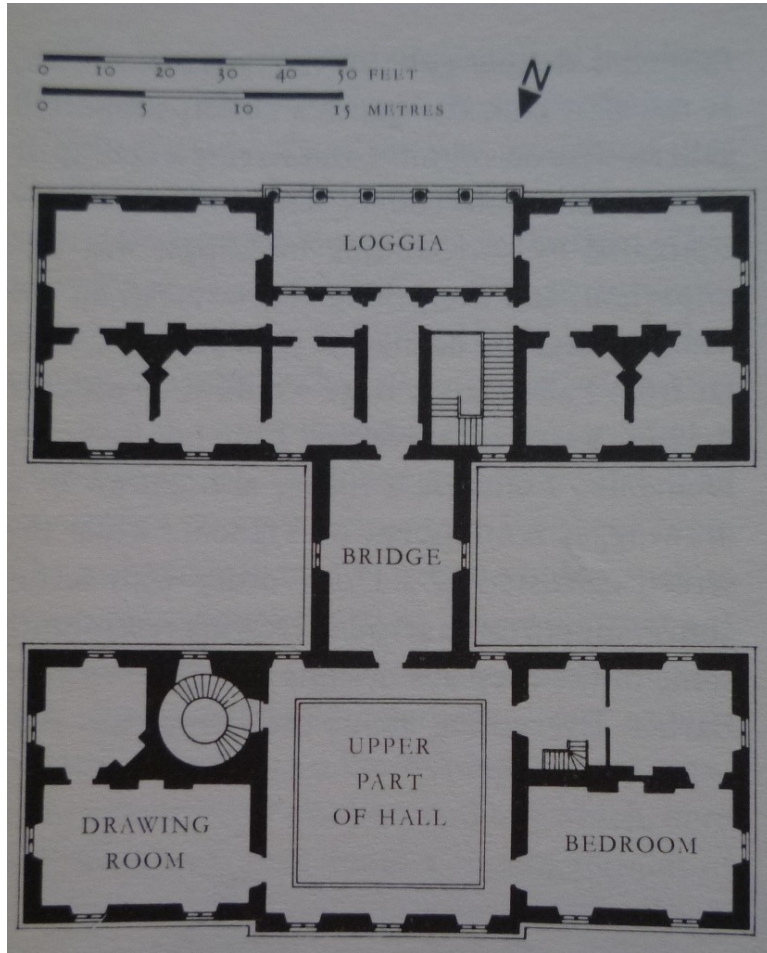


Queen's House v Greenwich, 1616-1636

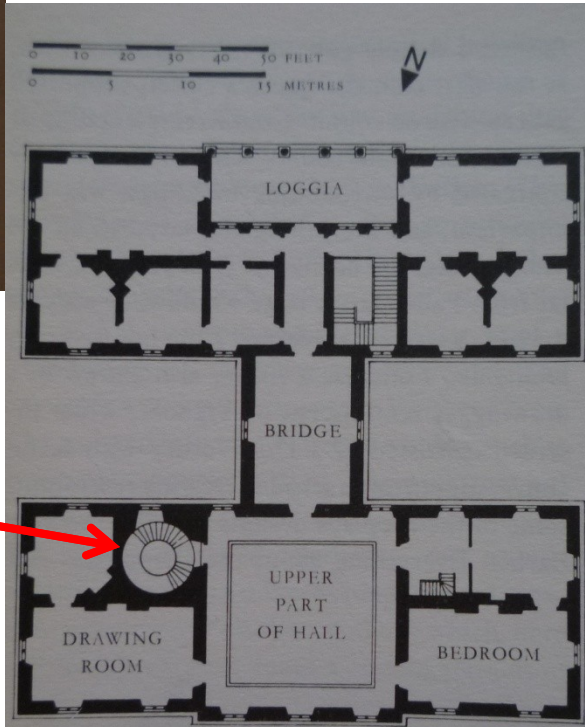




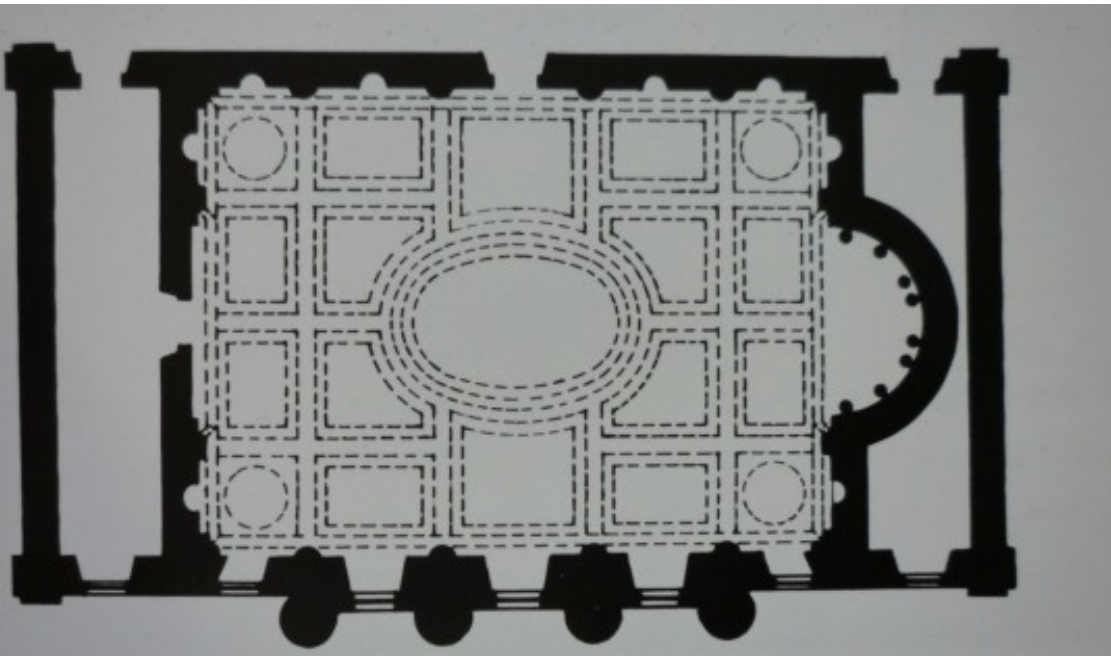
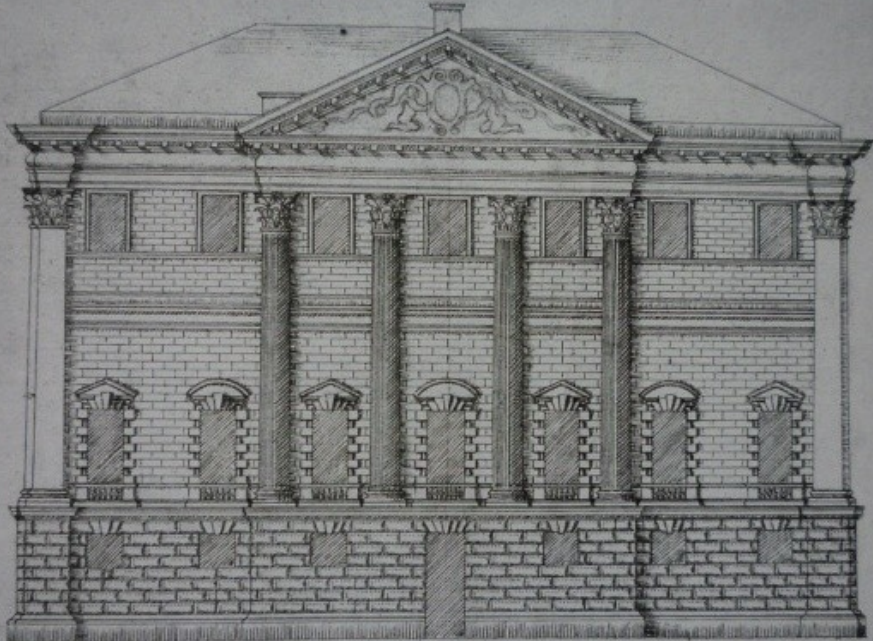
Queen's House v Greenwich, 1616-1636





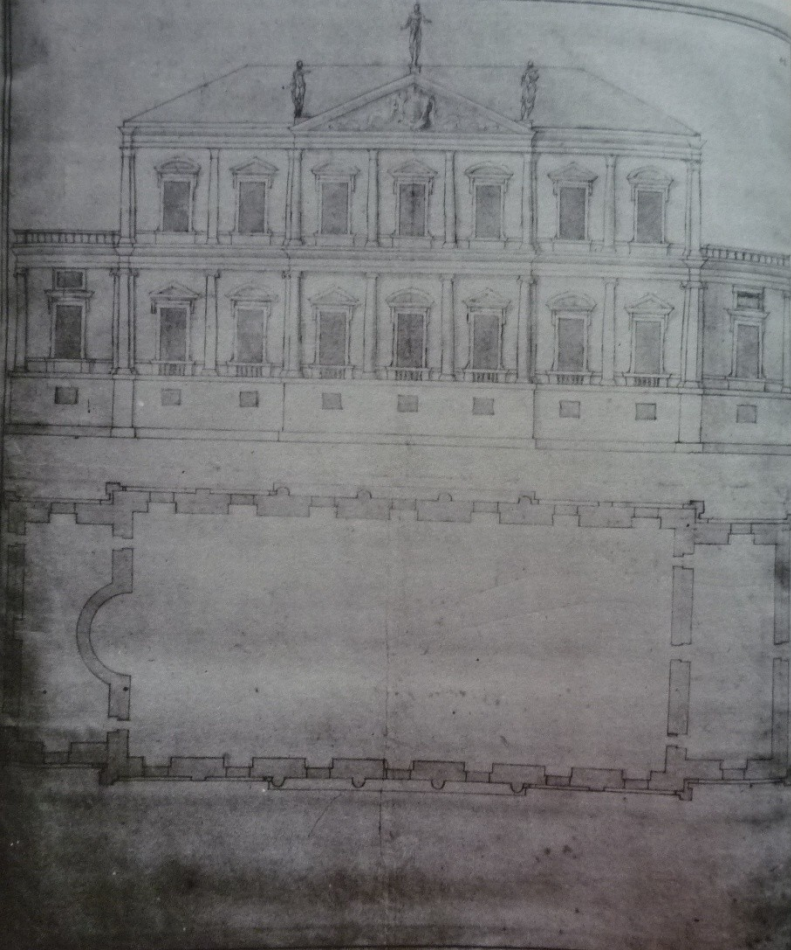


1617 – projekt Star Chamber
(Camera Stellata)

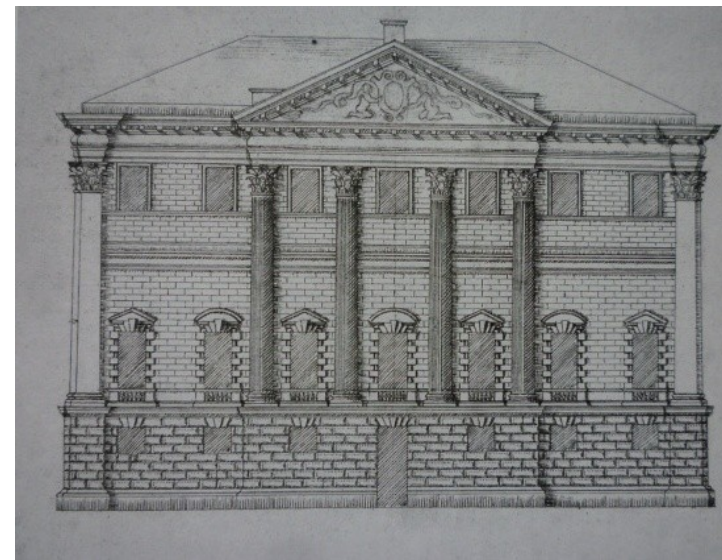


Londýn, Whitehall, Banqueting House, 1619-1622

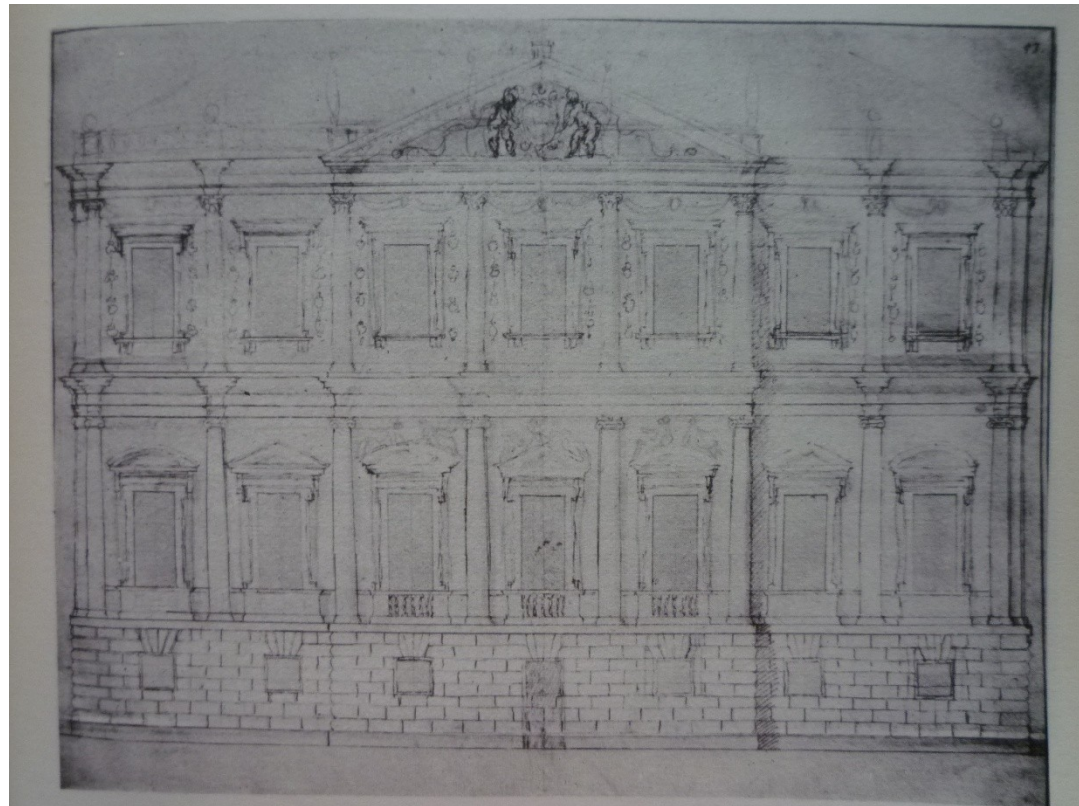


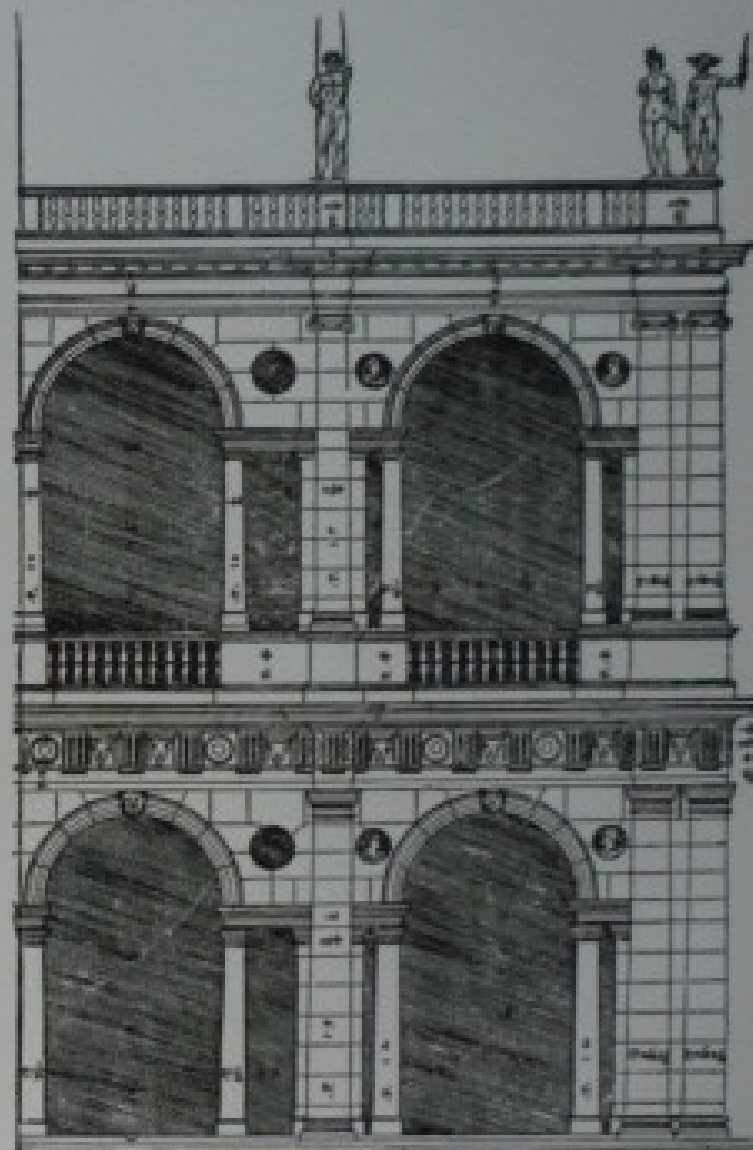
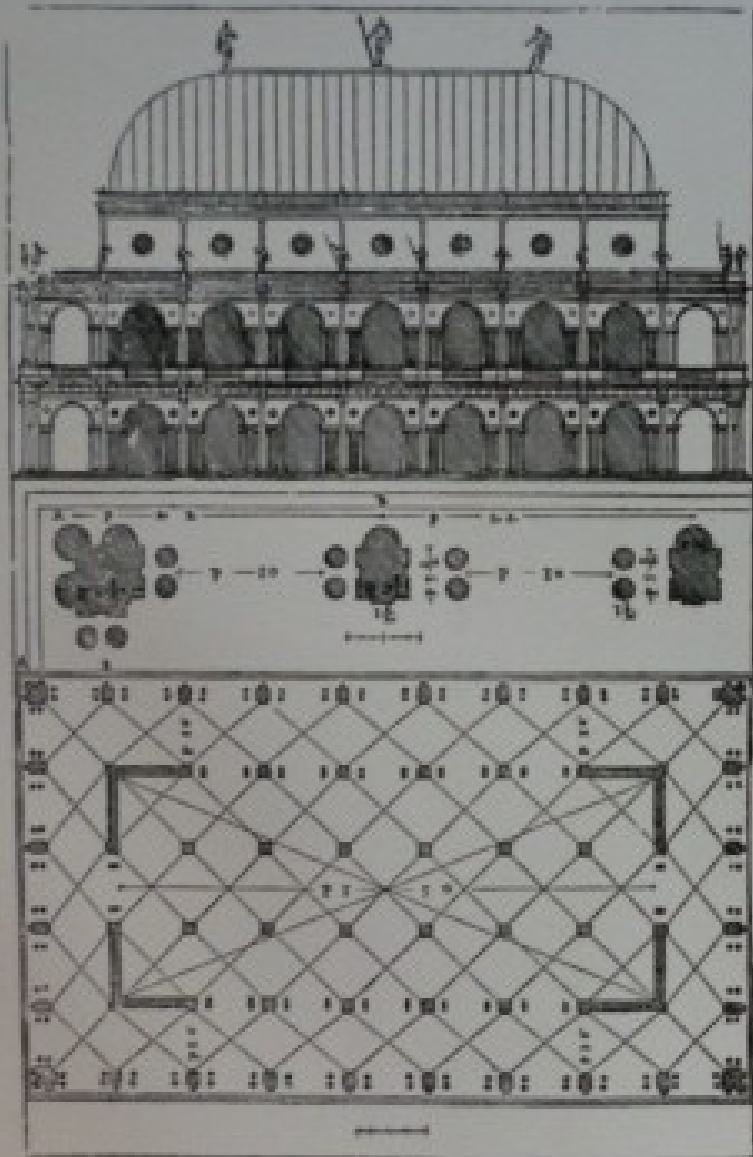


Star Chamber

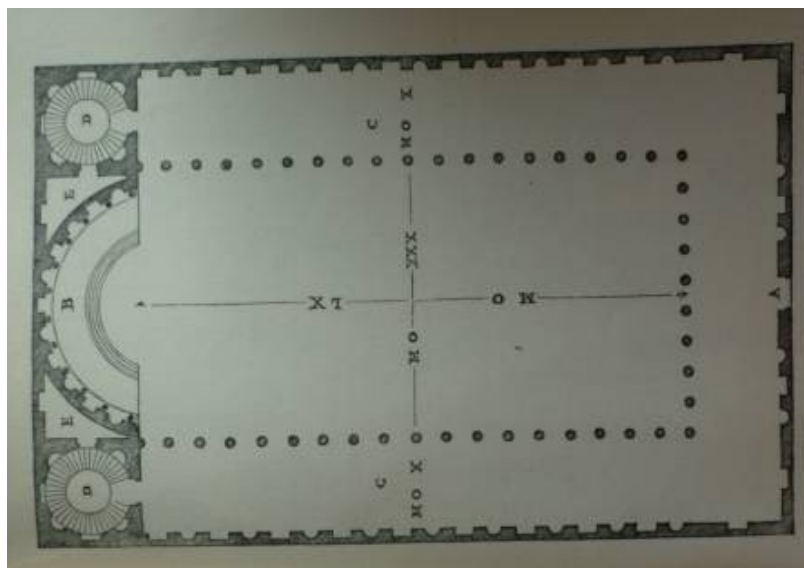
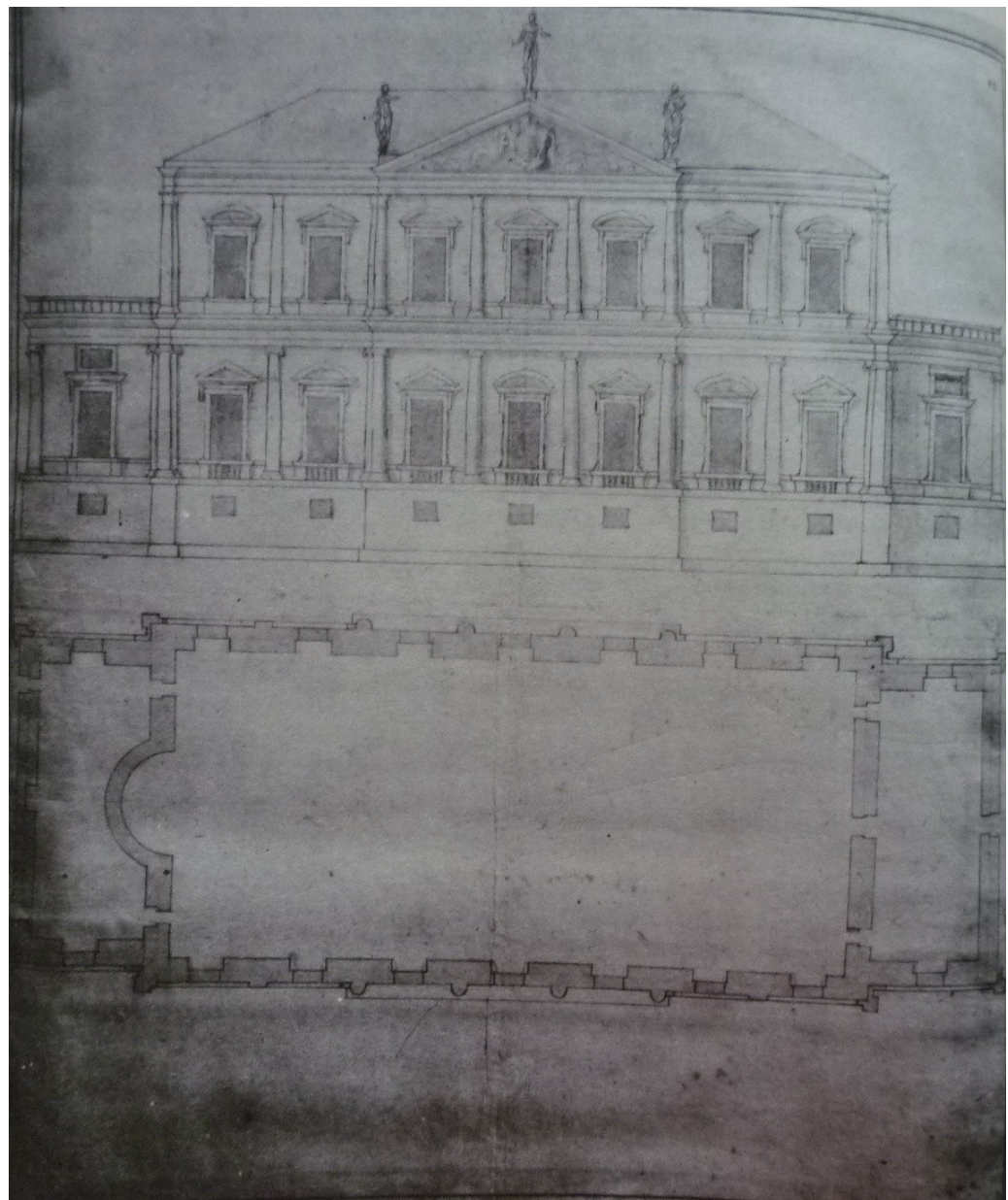
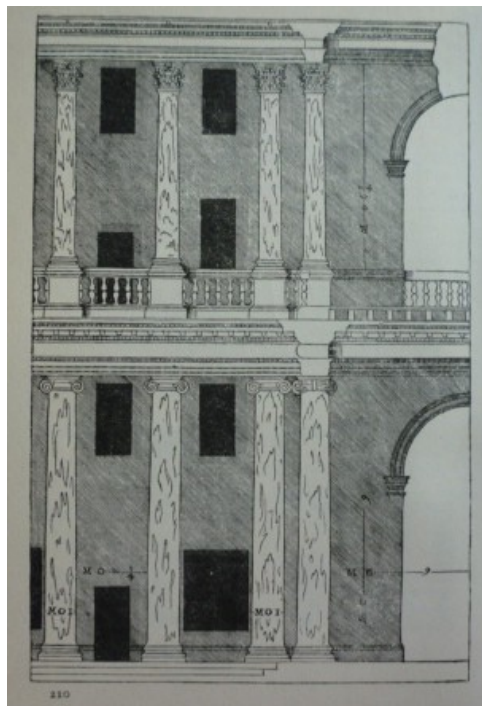


Banqueting House

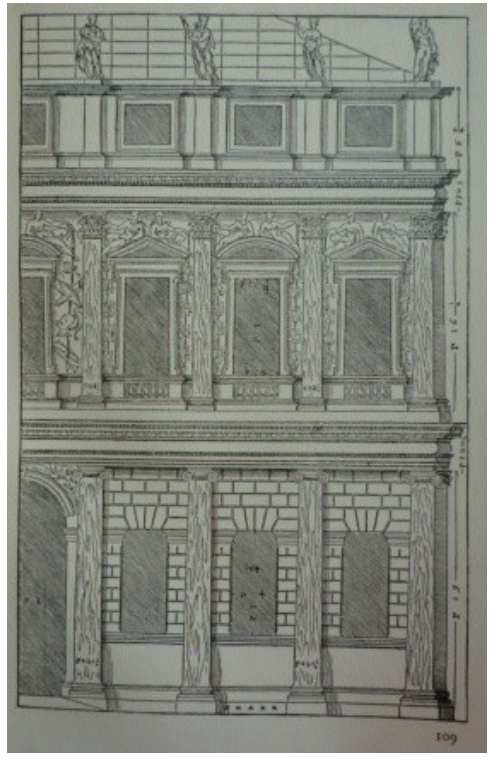
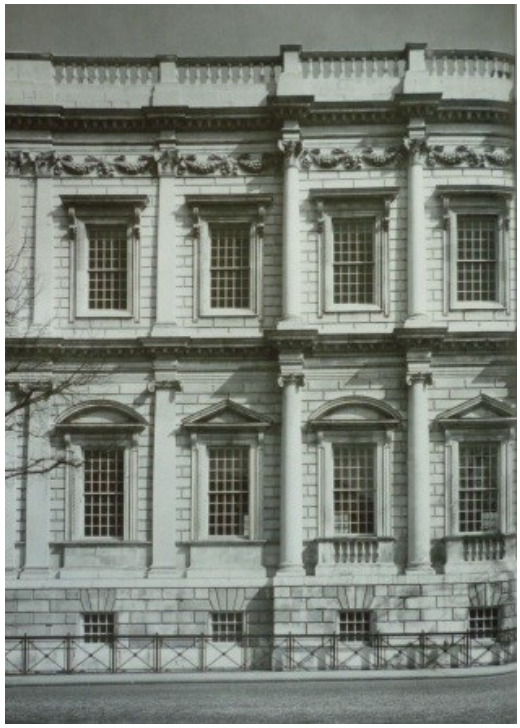




Římská
bazilika
dle Palladia

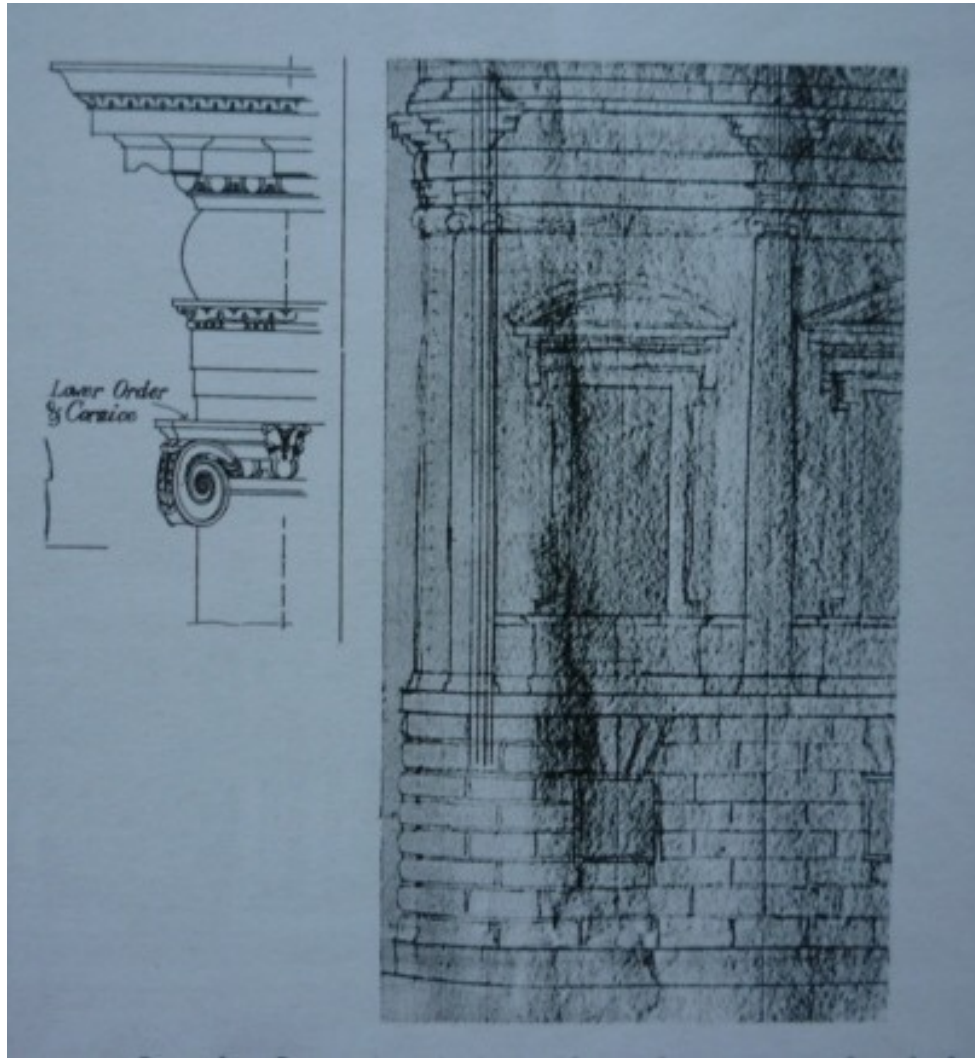


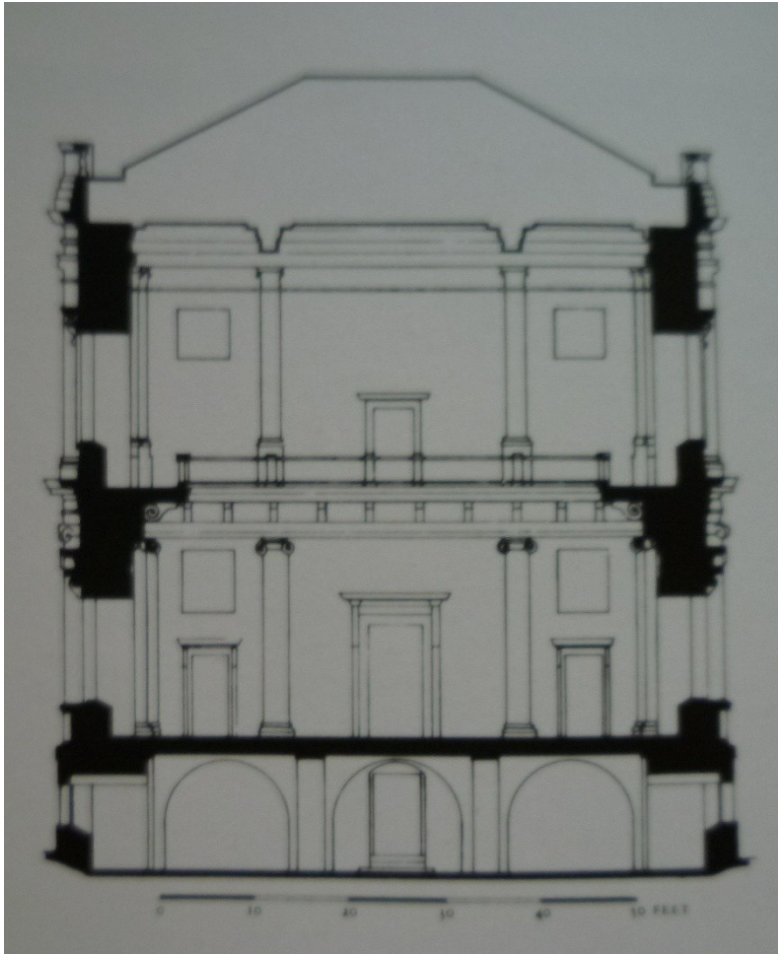
Palazzo Chiericati Palazzo Porto-Barbarano



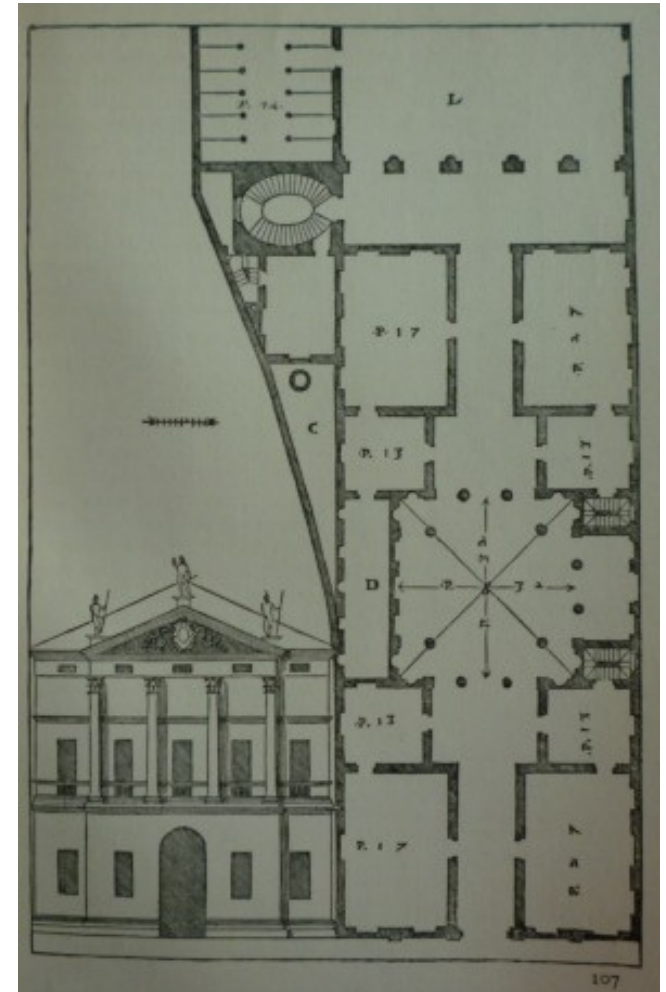
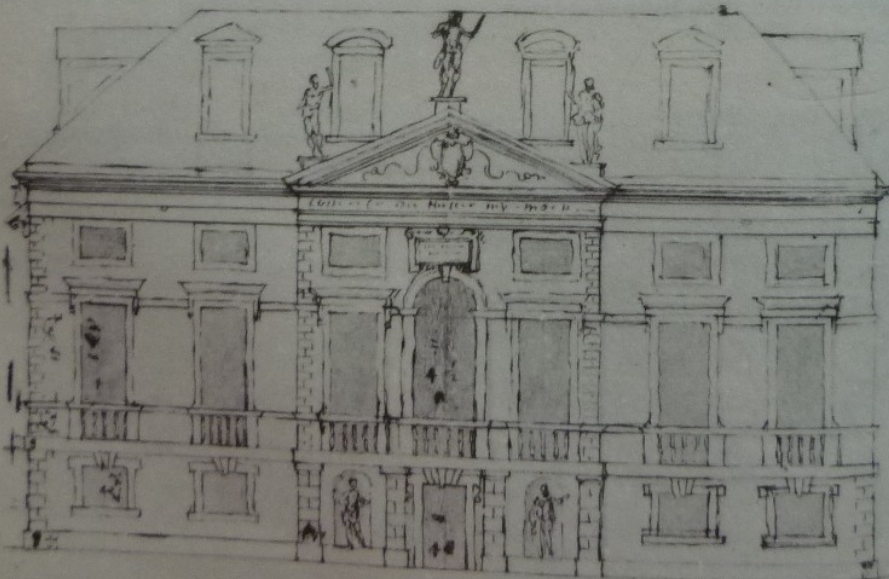
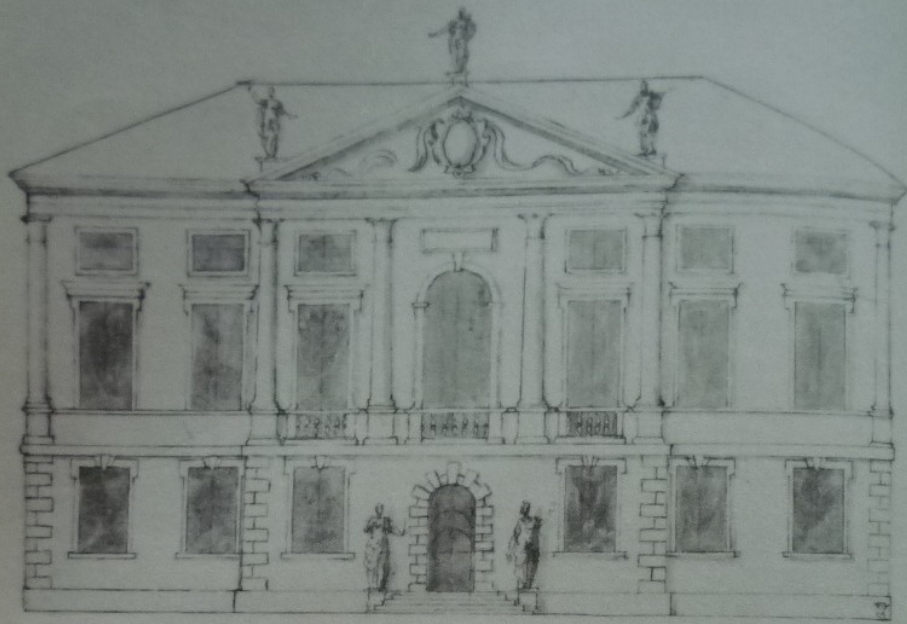


Scamozzi a Jones





Residence Prince Charlese,
Londýn, Newmarket, 1619



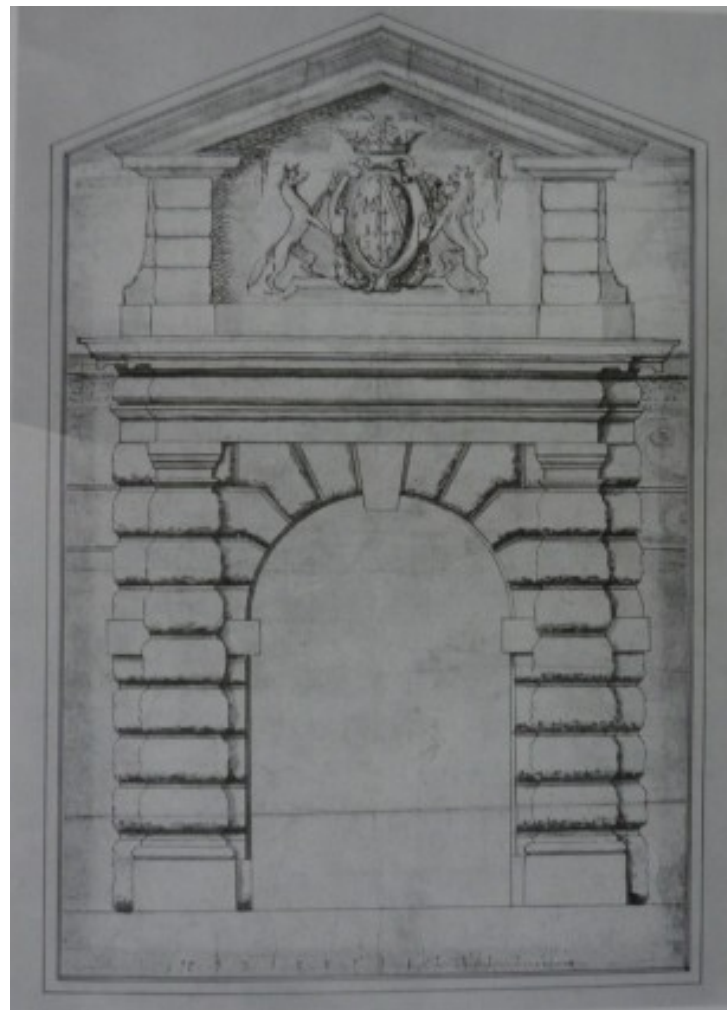
Queen's Chapel,
St. James Palace, 1623-27







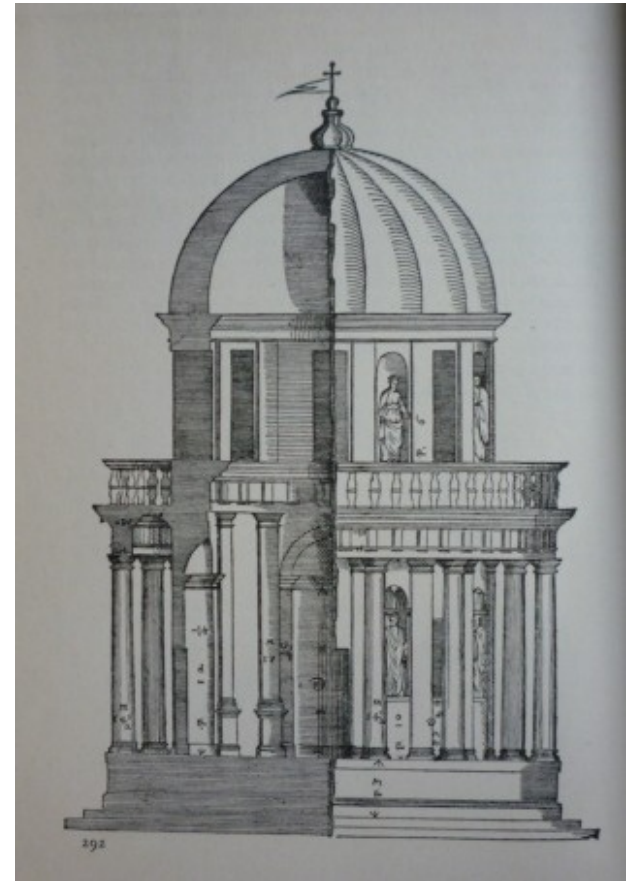
Arundel House, 1619
Hatton House, Ely Place, Holborn, před 1624



Portál pro pro Great House Lionela Cranfielda, Chelsea, 1626
dnes v Chiswick Hose

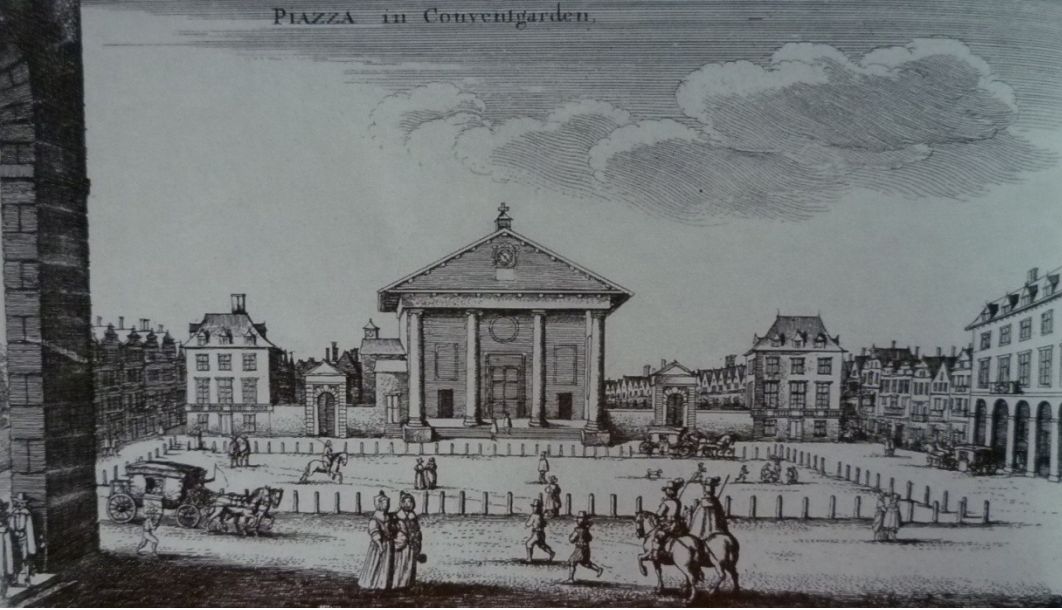


Castrum doloris Jakuba I.,
1625

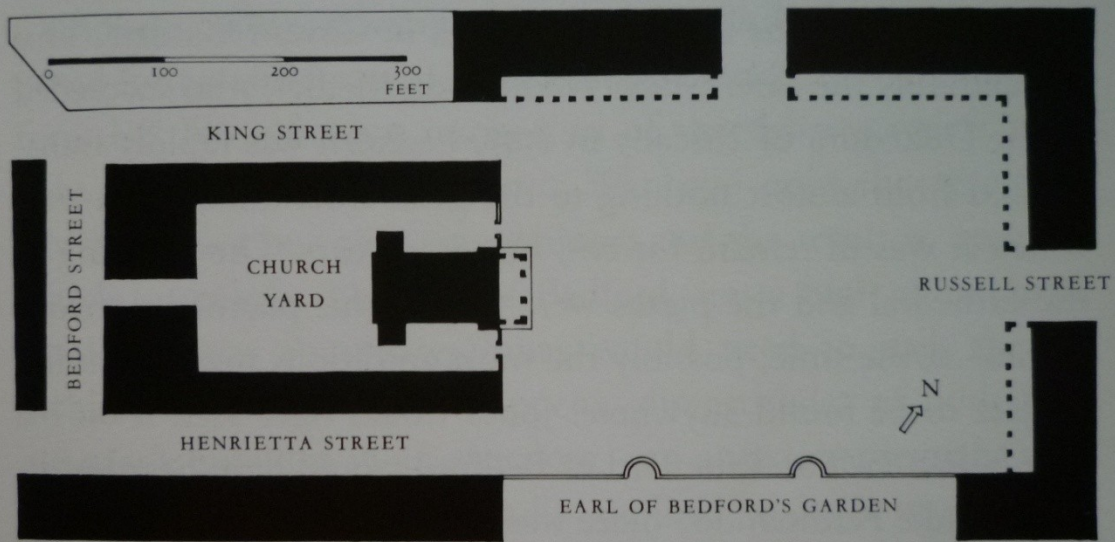
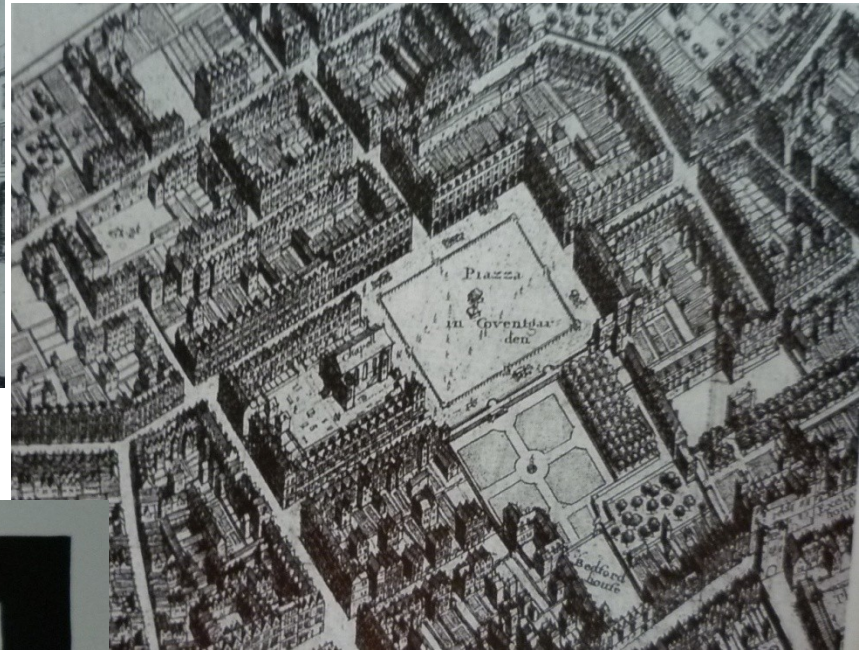




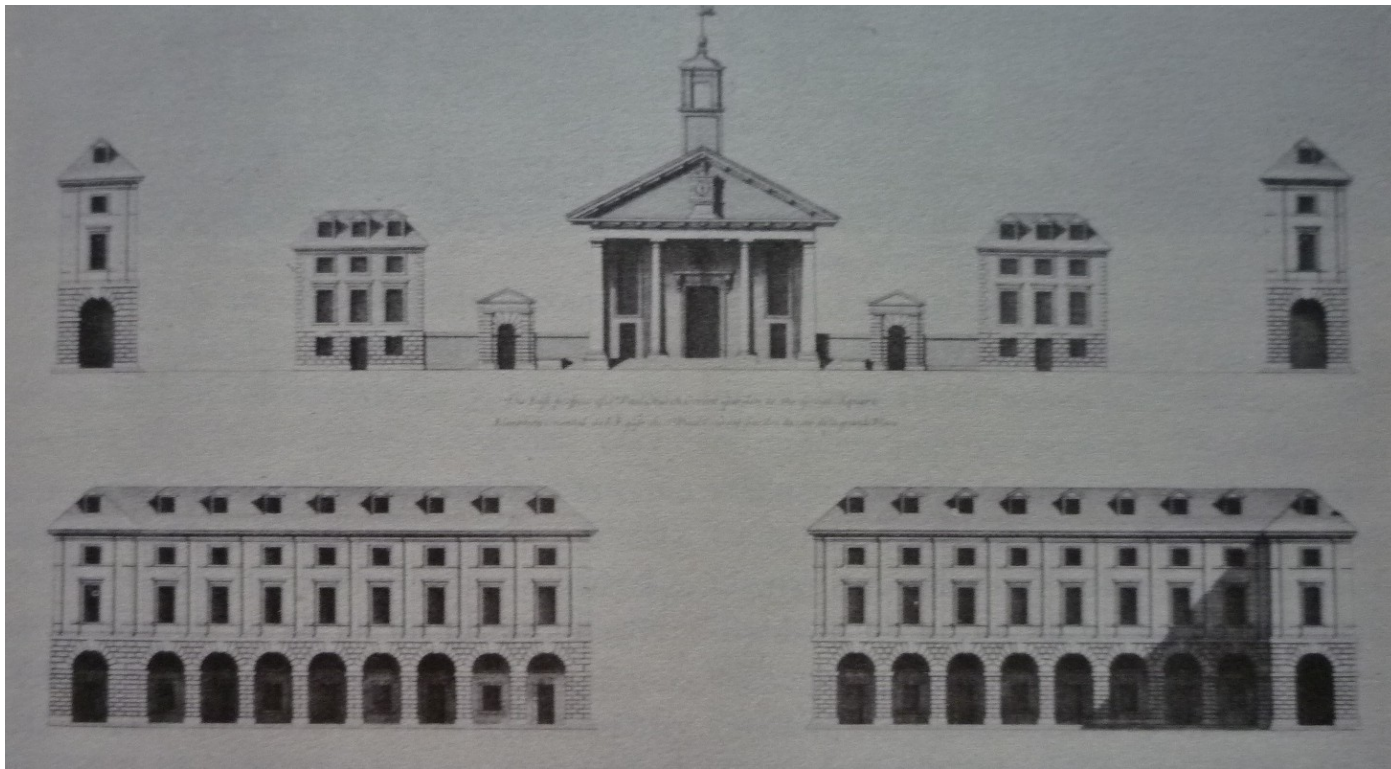
PIAZZA in Coventgarden.



1630 – Covent Garden



38. Covent Garden. Block plan of original lay-out



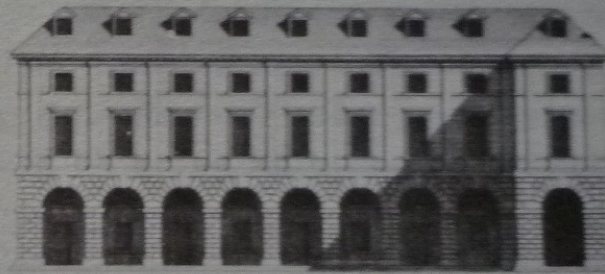
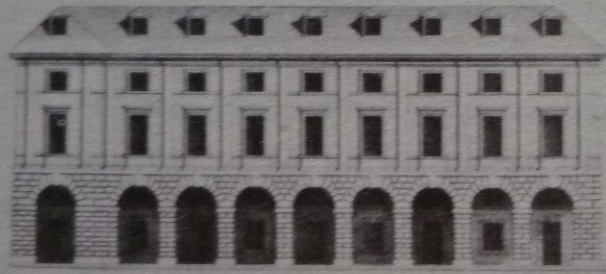


Place Royale
(des Vosges), po 1605



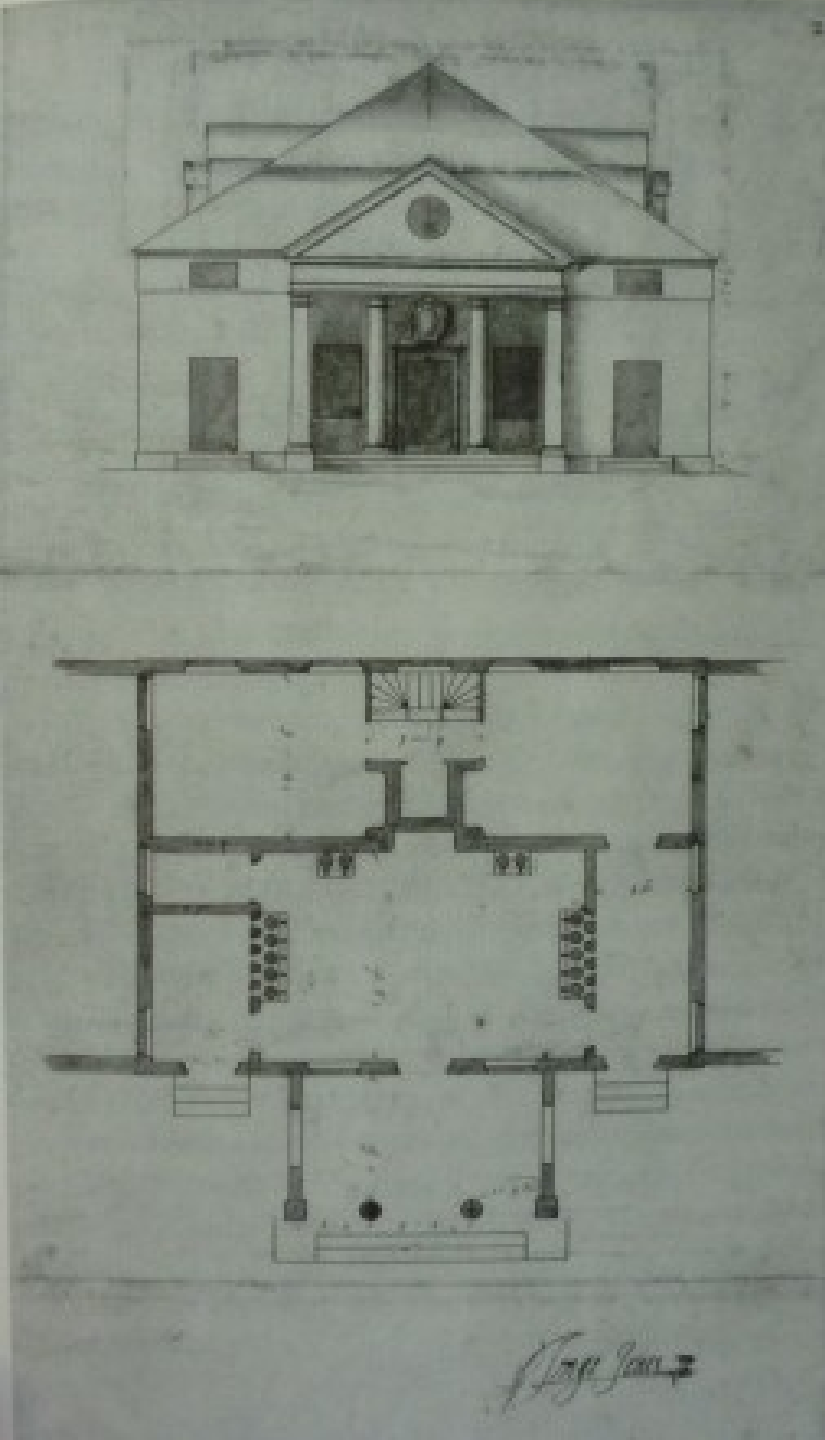


*The half of the front of the building which is the great square
London, 1711, and the "Pavilion" in the garden of the same house*

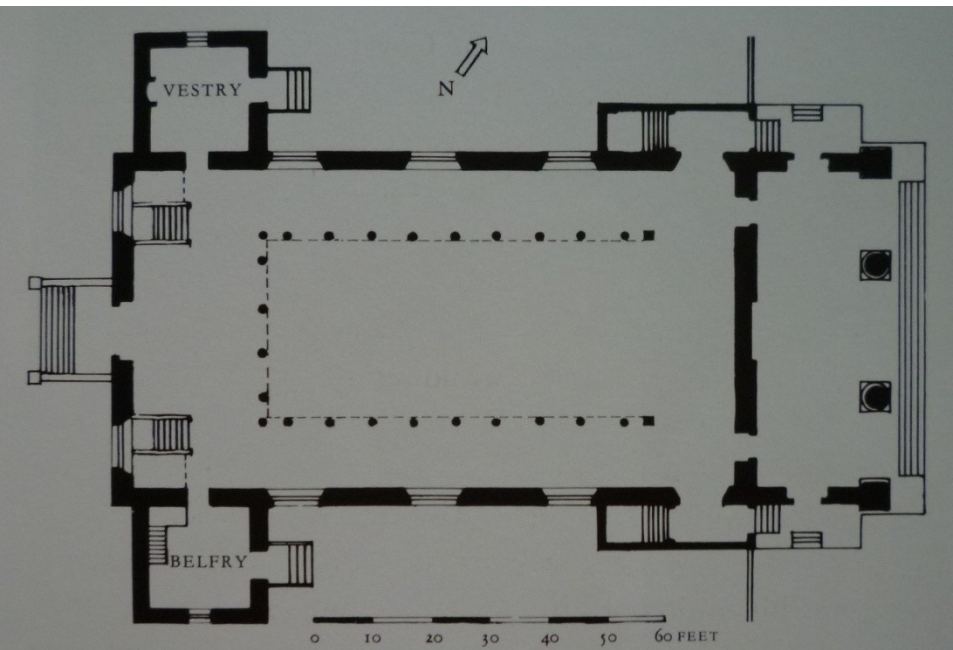




Projekt pivovaru pro rezidenci
Jakuba I. v Newmarketu.
Sv. Pavel, Covent Garden



Sv. Pavel

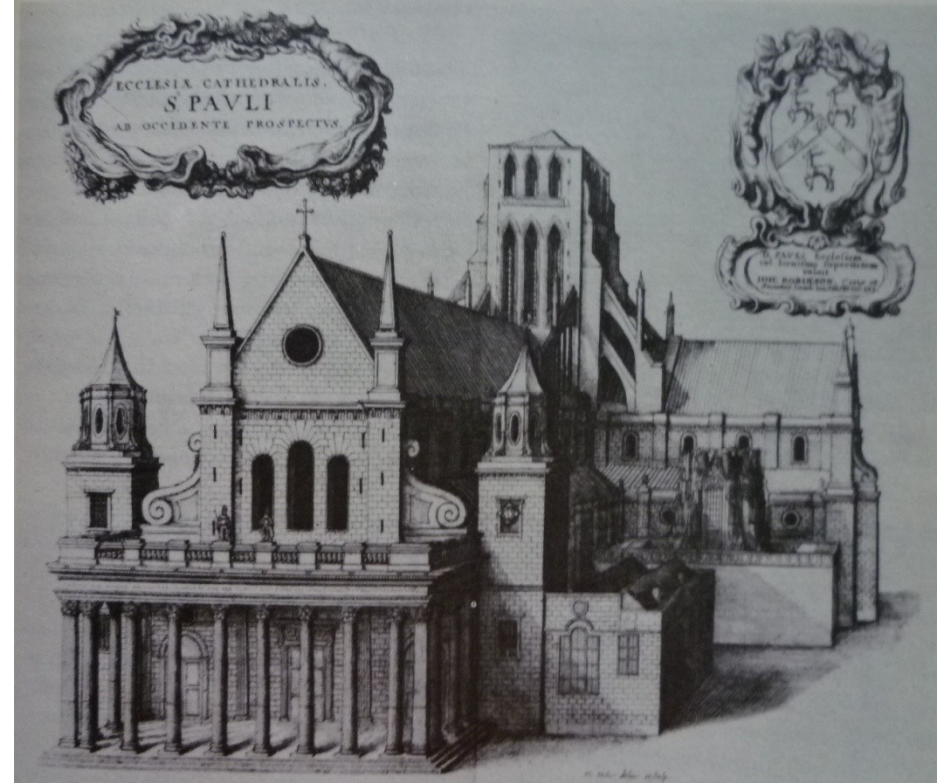
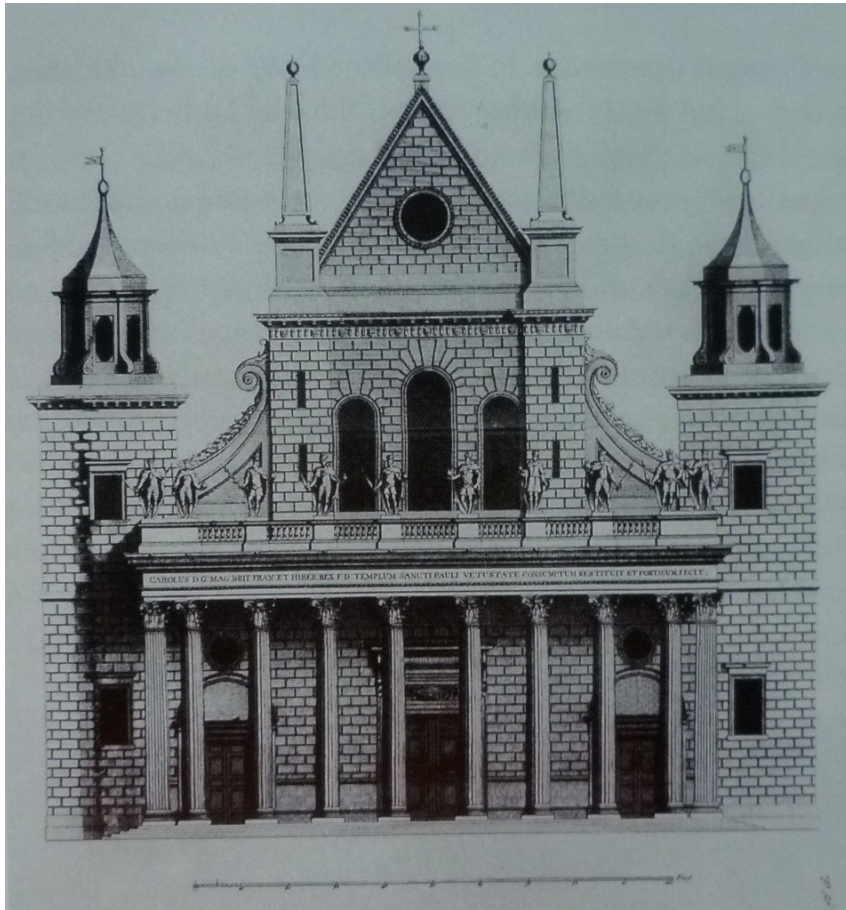


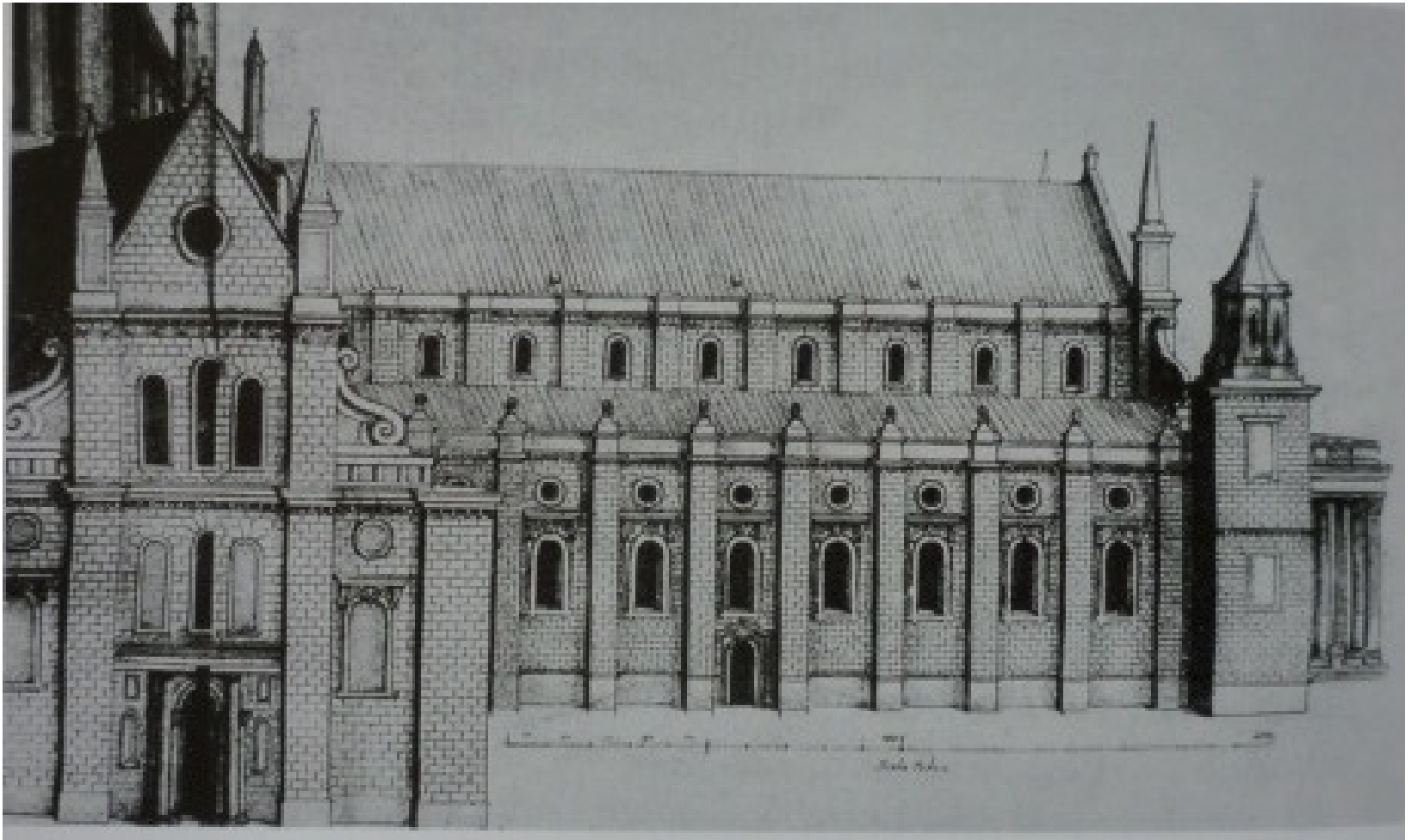






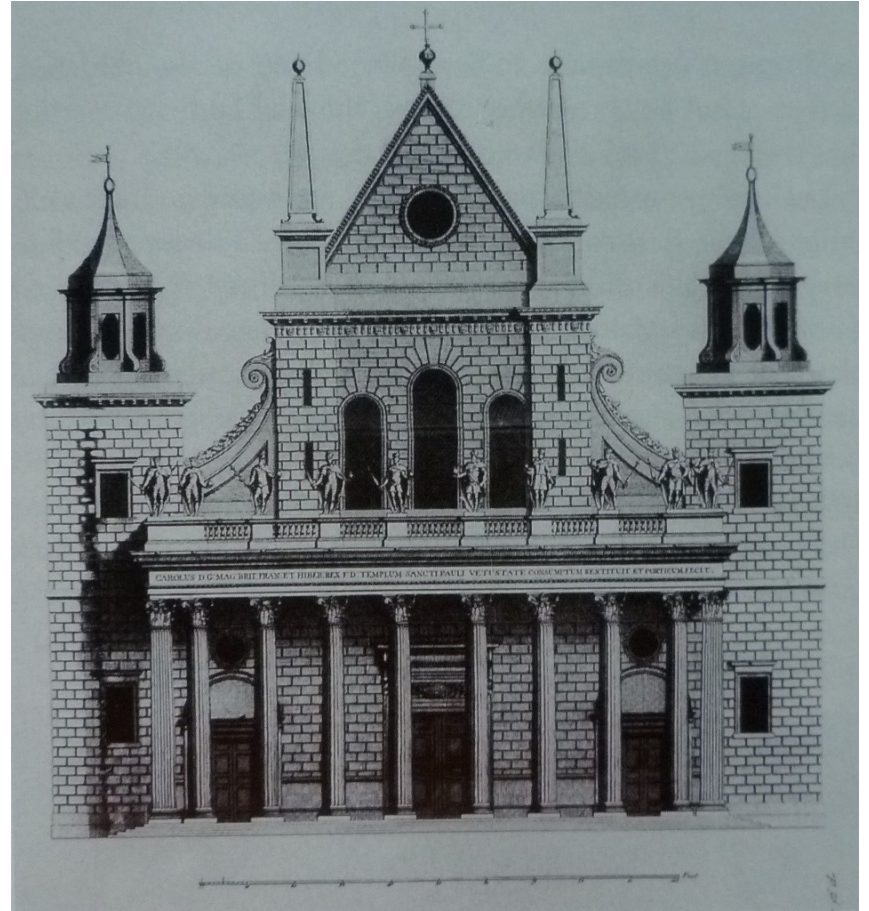
Katedrála sv. Pavla

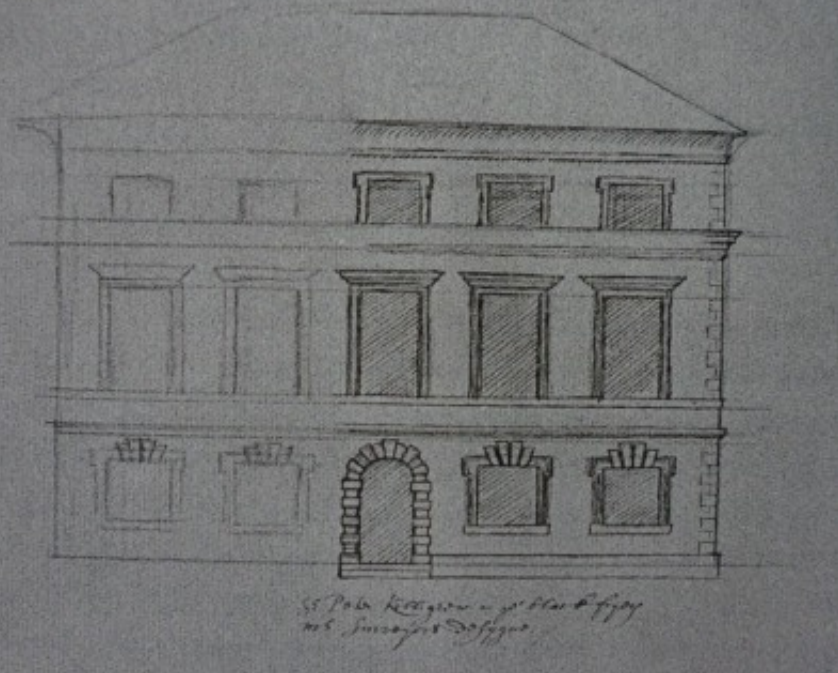




Návrh 1608





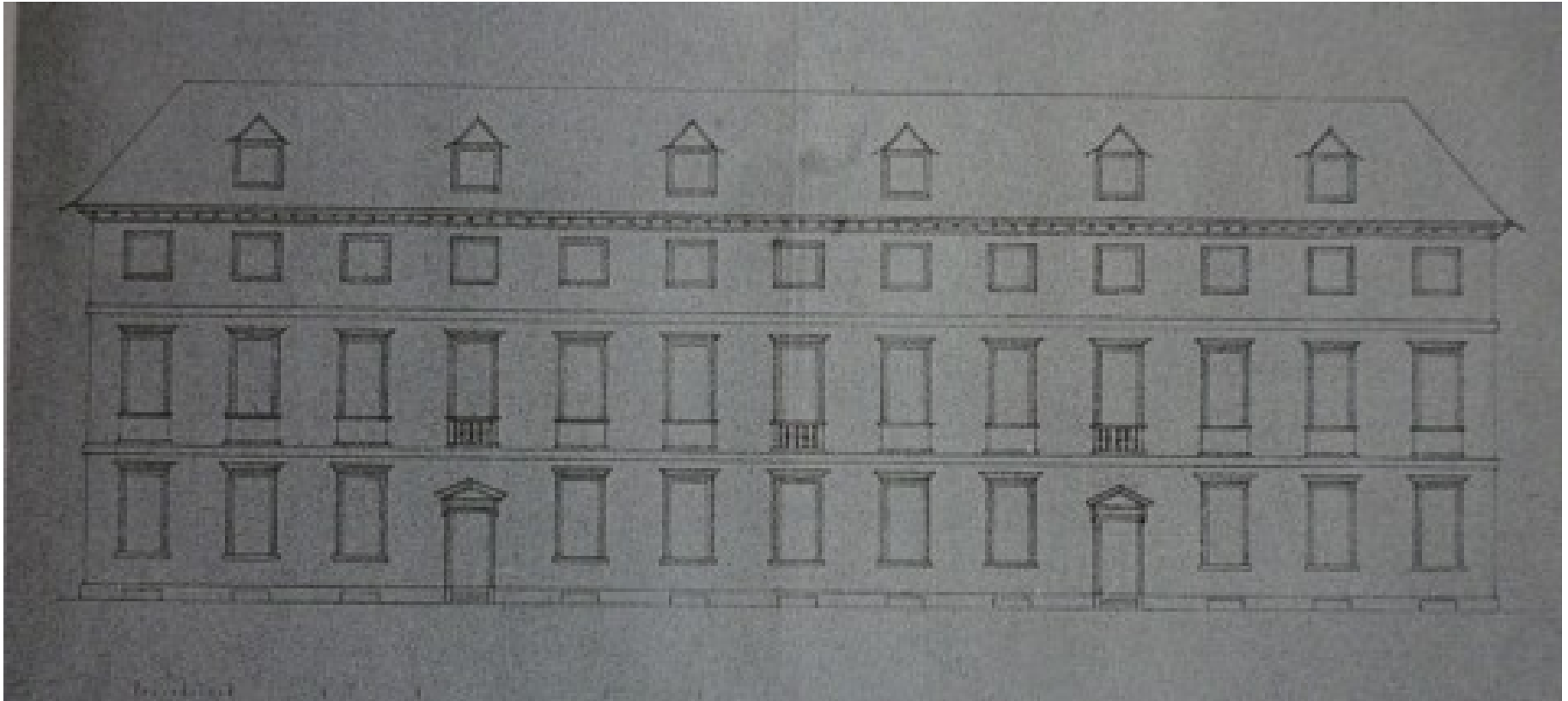


Lord Maltravers House, Lothbury,
1638

Návrh domu Sir Petera Killigrewa



Projekt pro Lothbury, 1638



Lindsey House, Lincoln's Inn Fields, Londýn, 1638-40



Wilton House, Wiltshire



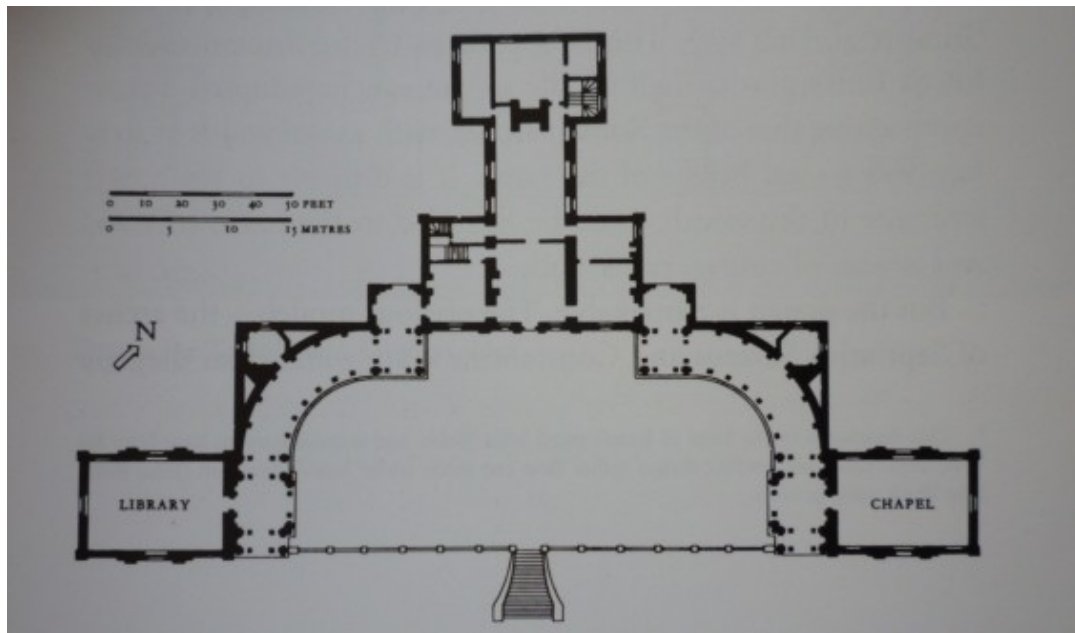
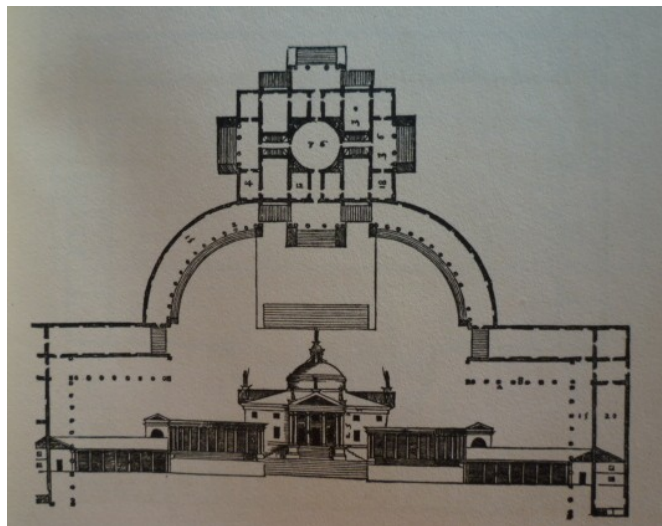
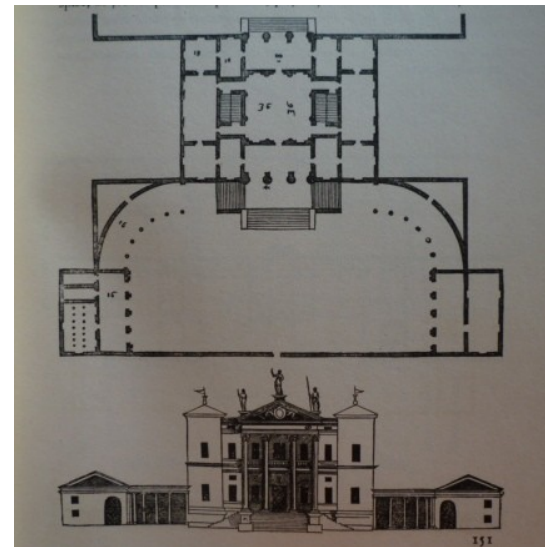
Wilton House, Wiltshire, 1636-40, jižní fasáda





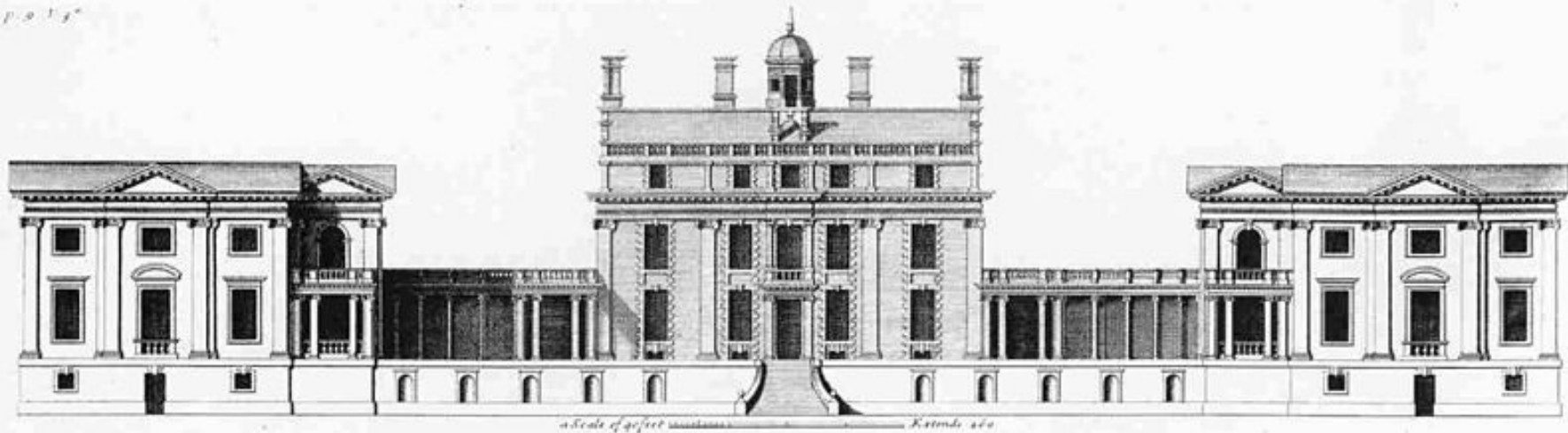


Stoke Bruerne, Sulgrave Manor, Northamptonshire, kol. 1629-1635





1.9.12



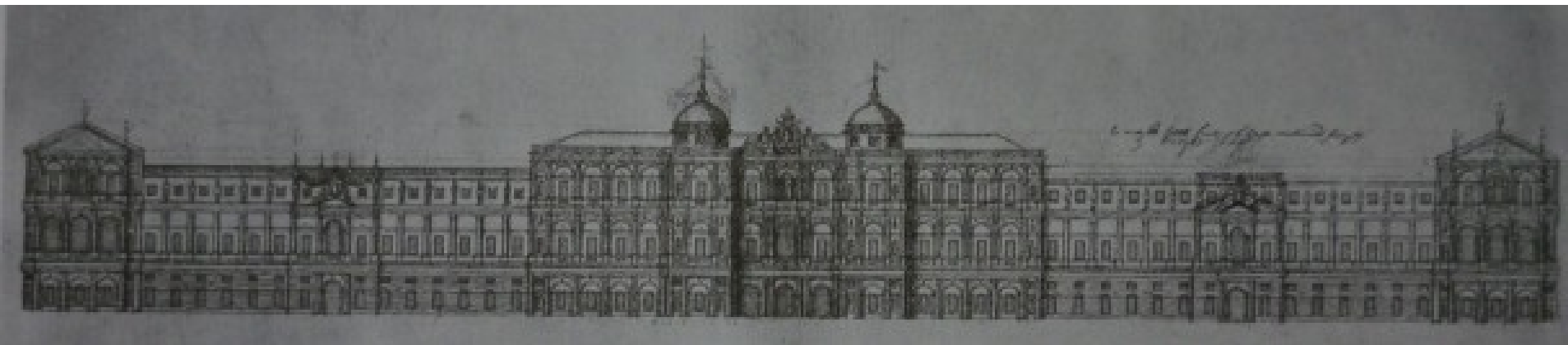
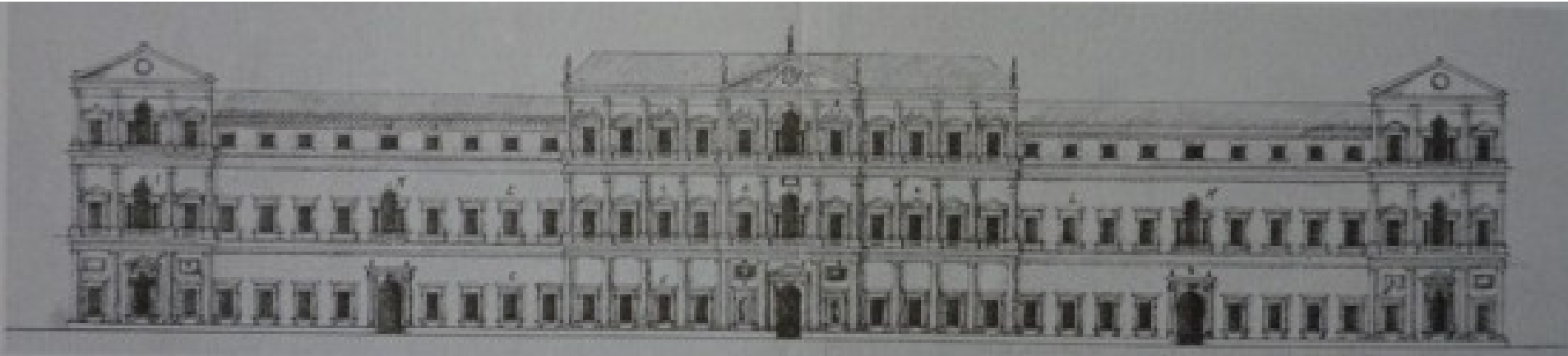
Vitruvius Britannicus



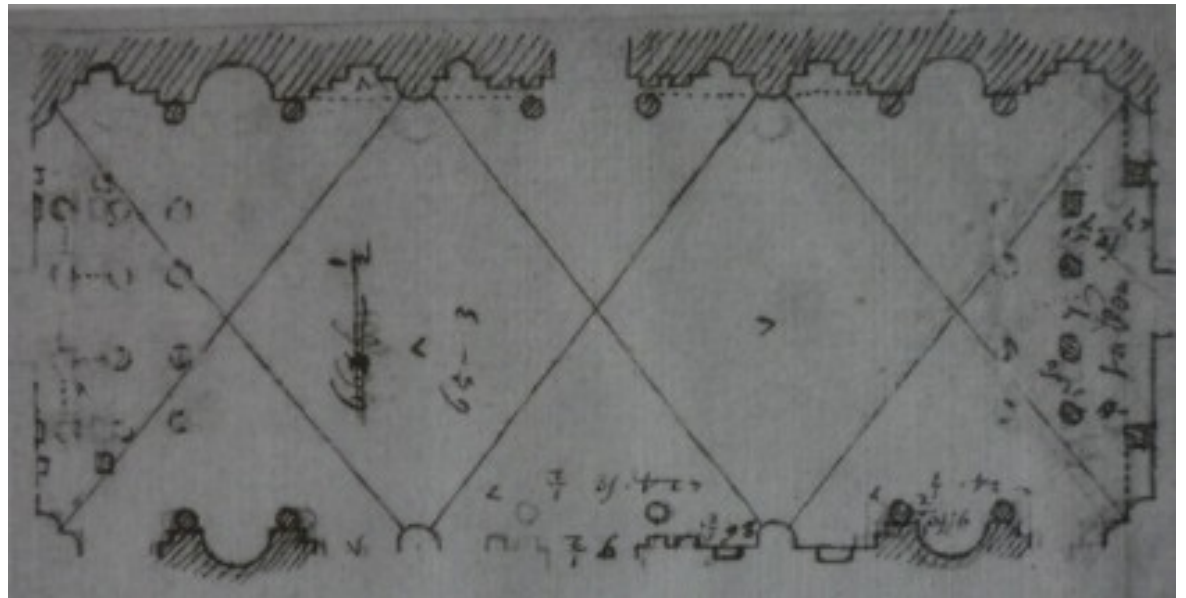
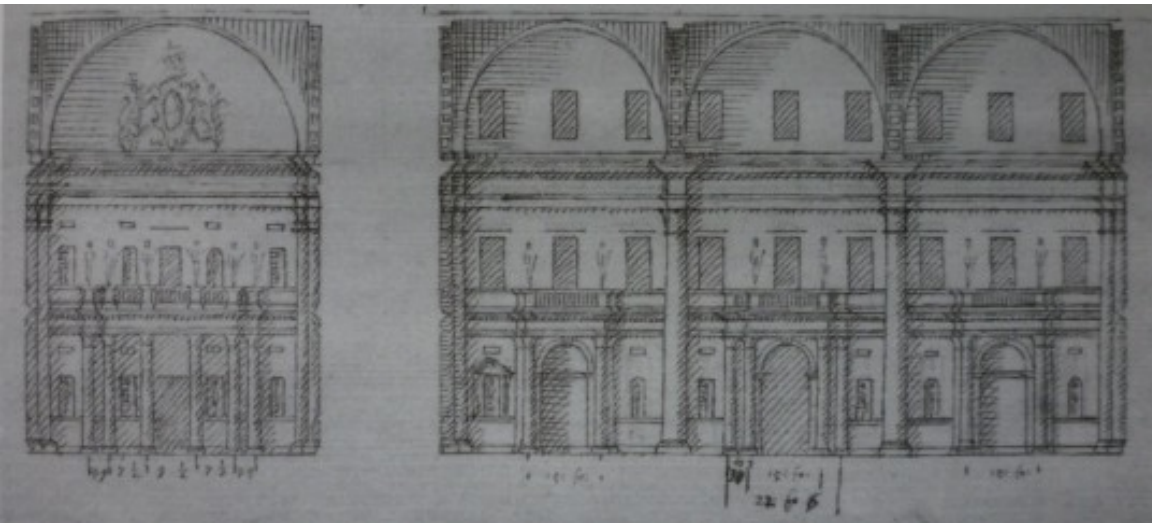




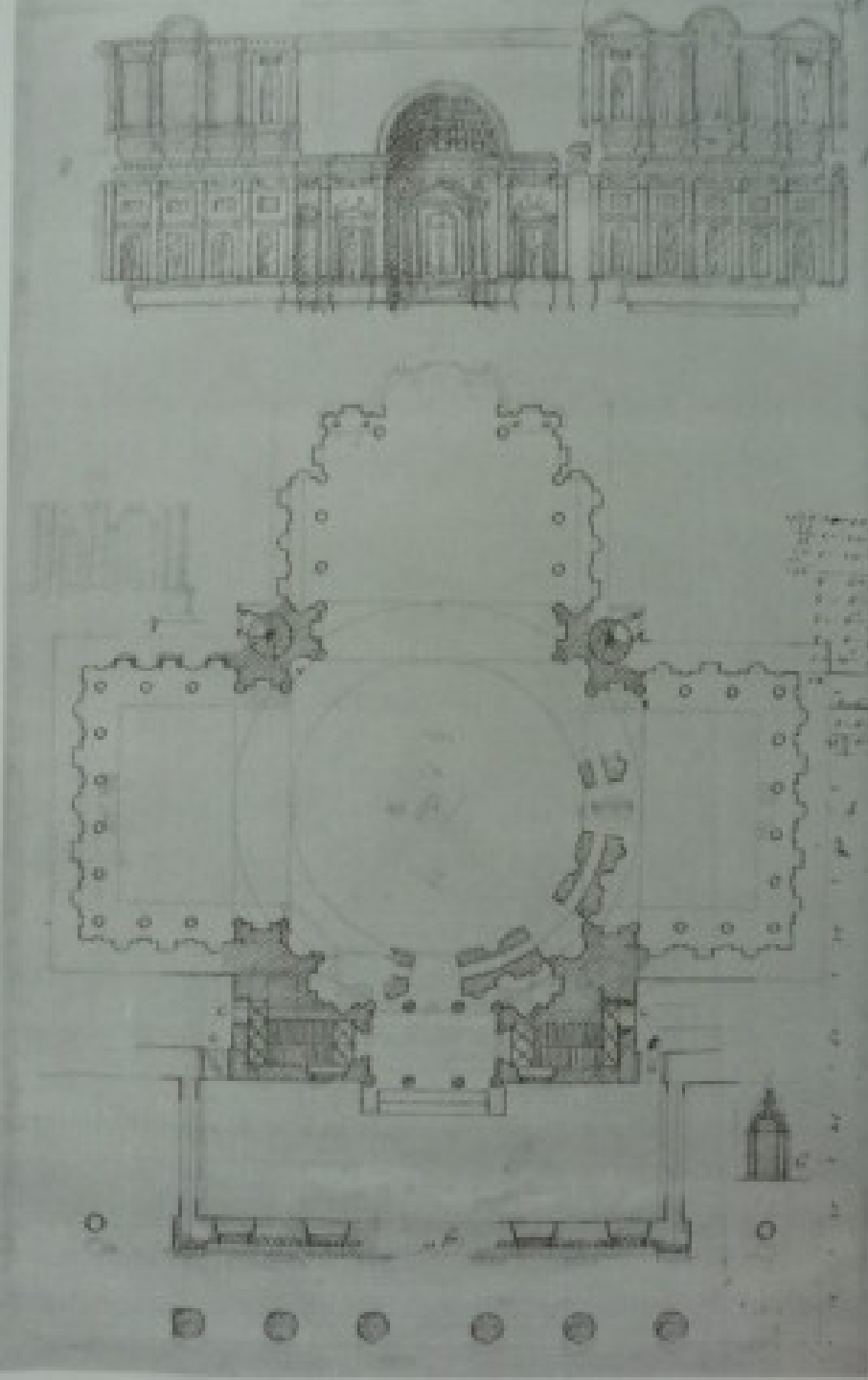
Návrhy pro Whitehall Palace, kol. 1638



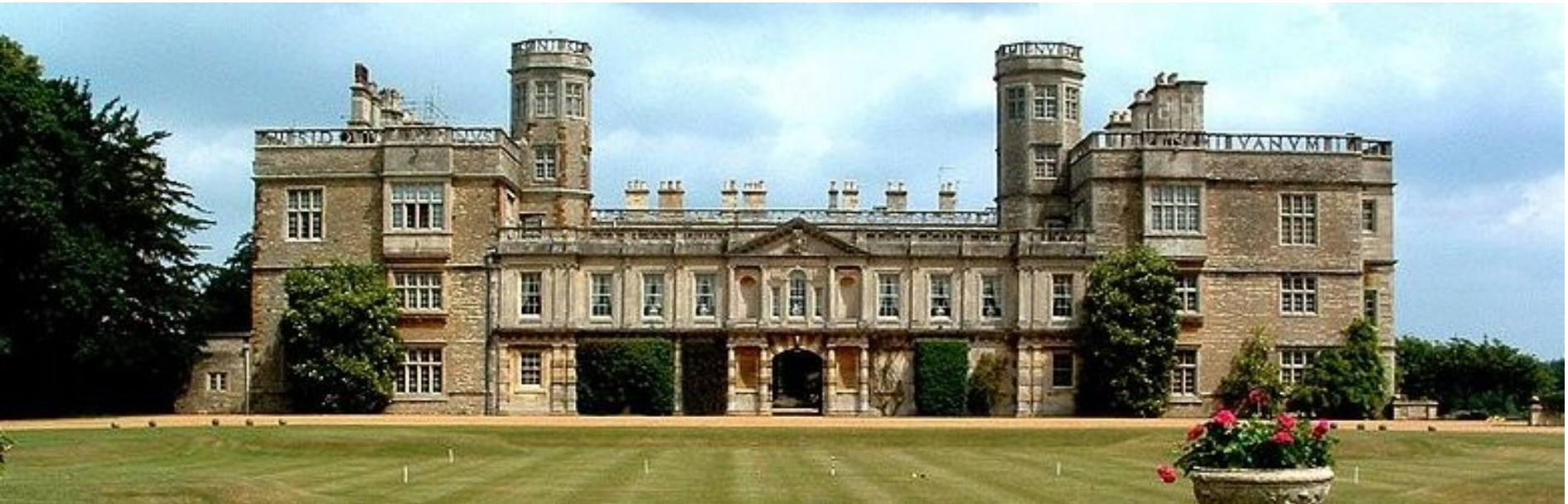
Návrh pro Whitehall Palace, Velký sál, kol. 1638

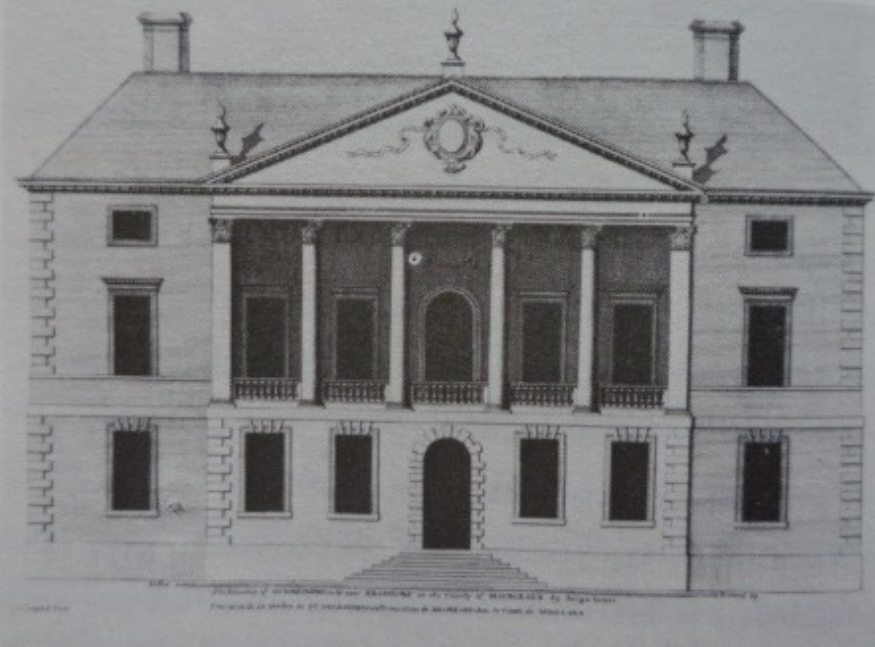


Projekt kaple pro Whitehall Palace,
kol. 1638



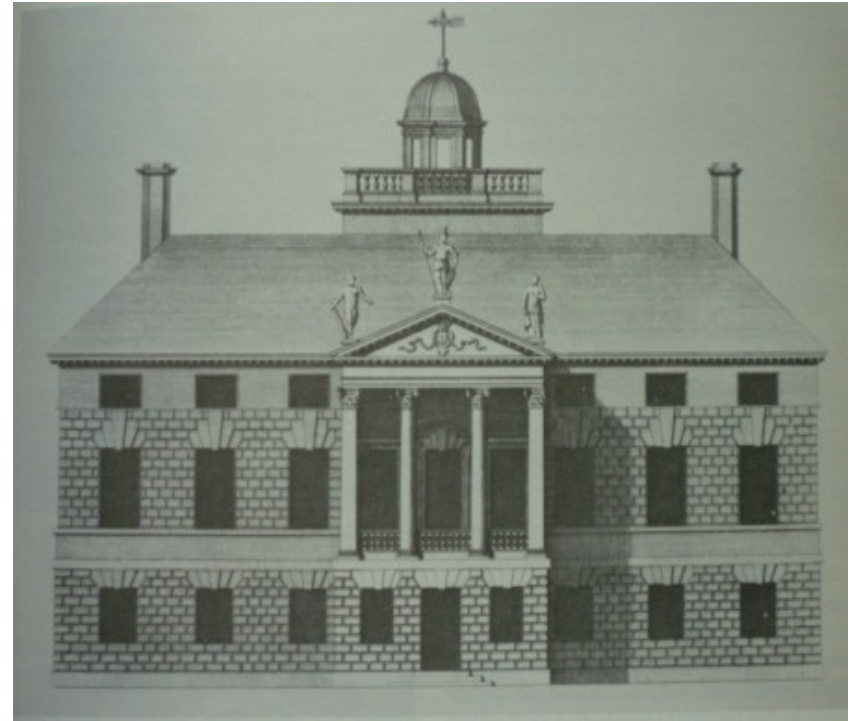
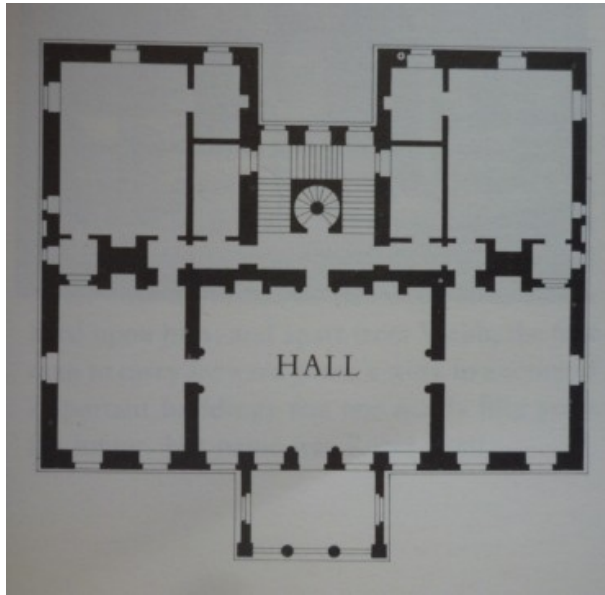
Castle Ashby, Northants





John Webb
Amesbury, Wilts, kol. 1661

Gunnersbury, Middlesex, 1658

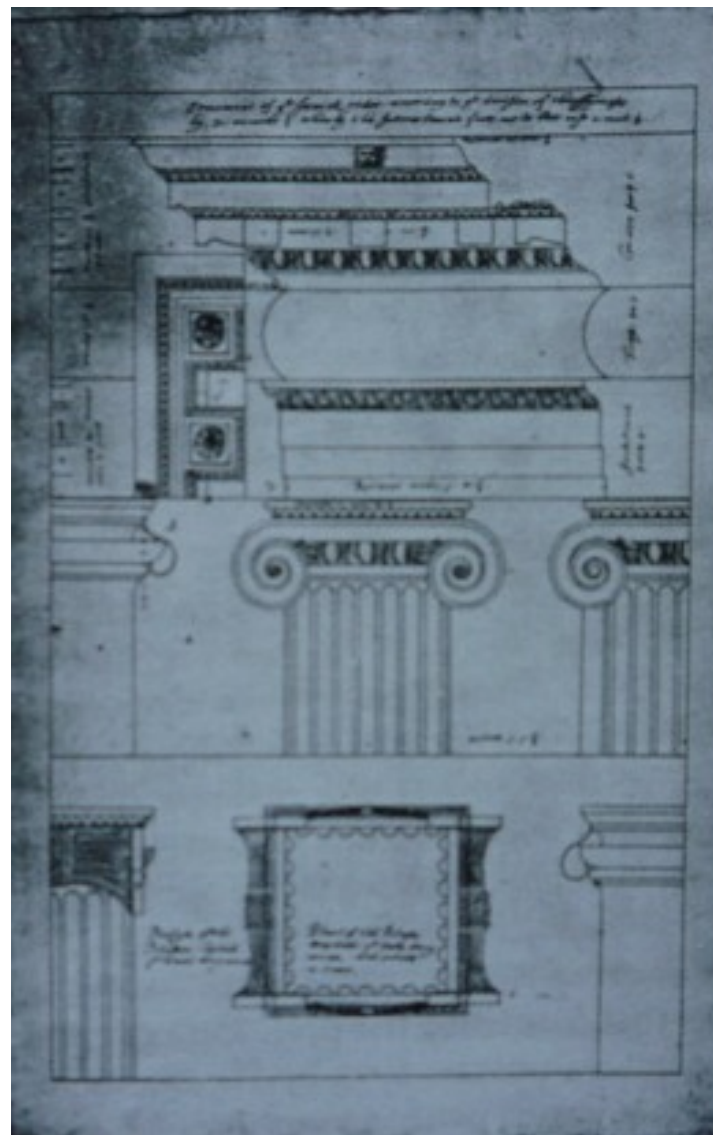
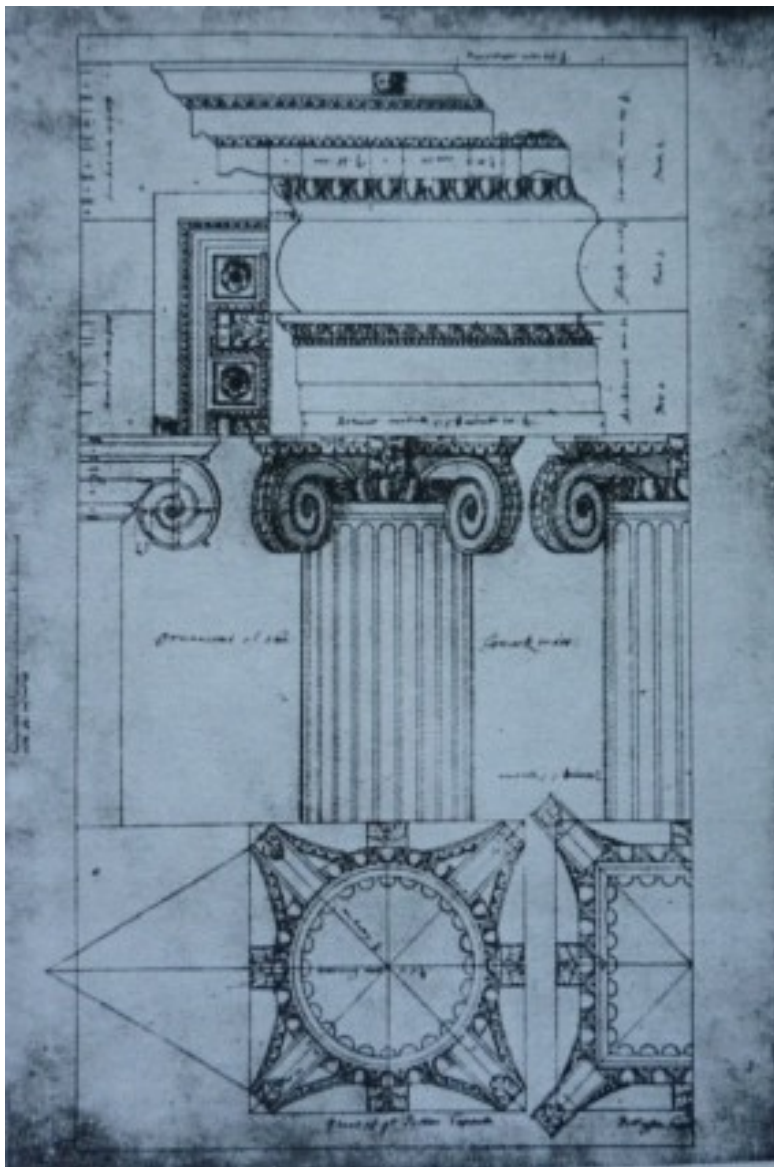


John Webb, Greenwich, Naval Academy, Charles Wing



'King Charles Court'

John Webb, Návrh iónského řádu



William Kent, *The Designs of Inigo Jones*, 1727



THE
DESIGNS
OF
INIGO JONES,

Consisting of
PLANS and ELEVATIONS
FOR
Publick and Private Buildings.

Publiſh'd by WILLIAM KENT,
With ſome Additional Deſigns.



The FIRST VOLUME.
M. DCC. XXVII.