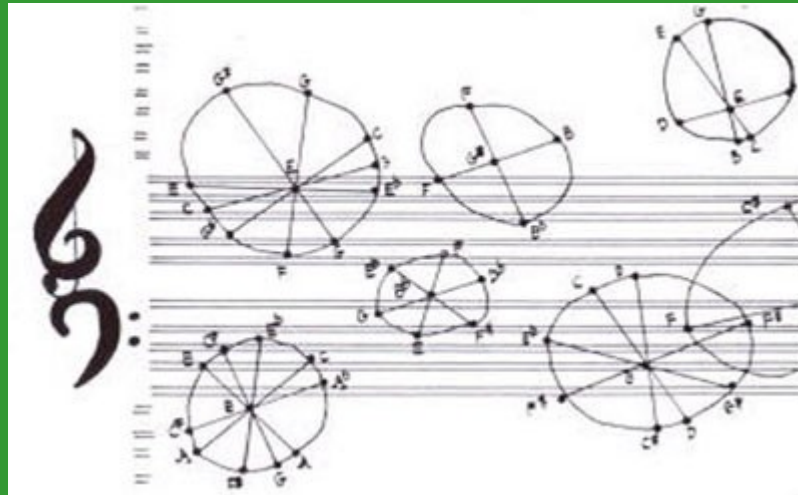


joHn caGe



# John Cage – 1912 - 1992



# Early Piano Works

- Metamorphosis (1938)



# Bicí nástroje

- Third Construction (1941)

Mikromakrokosmická rytmická struktura

24 bloků po 24 taktech – možnost výběru

# Preparovaný klavír

- Sonáty a interludia (1946 – 1948)
- First Interludium
- <http://www.youtube.com/watch?v=0UhkRAH5RFU&feature=related>
- Sonata No. 2
- <http://www.youtube.com/watch?v=pUTXNxFvIDw&feature=related>

16va	8va	TONE	MATERIAL	STRINGS LEFT TO RIGHT	DISTANCE FROM BRIDGE PER (1/2) INCH	MATERIAL	STRINGS LEFT TO RIGHT	DISTANCE FROM BRIDGE PER (1/2) INCH	MATERIAL	STRINGS LEFT TO RIGHT	DISTANCE FROM BRIDGE PER (1/2) INCH	TONE
						SCREW	2-3	1 3/4"				A
						MED. BOLT	2-3	1 3/8"				G
						SCREW	2-3	1 3/8"				F
						SCREW	2-3	1 3/8"				E
						SCREW	2-3	1 3/8"				D
						SM. BOLT	2-3	1 3/8"				C
						SCREW	2-3	1 3/8"				C
						FURNITURE BOLT	2-3	2 1/8"				B
						SCREW	2-3	2 1/8"				B
						SCREW	2-3	1 7/8"				A
						MED. BOLT	2-3	2 3/8"				A
						SCREW	2-3	2 3/8"				G
						SCREW	2-3	2 3/8"				F
			SCREW	1-2	3/4"	FURN. BOLT + 2 NUTS	2-3	2 3/8"	SCREW + 2 NUTS	2-3	3 1/4"	F
						SCREW	2-3	1 3/8"				E
						FURNITURE BOLT	2-3	1 7/8"				E
						SCREW	2-3	1 9/16"				C
						SCREW	2-3	1 1/8"				C
						MED. BOLT	2-3	3 3/4"				B
			RUBBER	1-2-3	4 1/2"	SCREW	2-3	4 3/8"				A
						FURNITURE BOLT	2-3	1 3/8"				G
						SCREW	2-3	1 3/4"				F
						SCREW	2-3	2 5/8"				F
			RUBBER	1-2-3	5 3/4"							E
			RUBBER	1-2-3	6 1/2"	FURN. BOLT + NUT	2-3	6 7/8"				E
						FURNITURE BOLT	2-3	2 7/8"				D
			RUBBER	1-2-3	3 5/8"							D
						BOLT	2-3	7 3/8"				C
						BOLT	2-3	2				B
						SCREW	2-3	1				B
			SCREW	1-2	10				RUBBER	1-2-3	8 1/4"	B
			(PLASTIC (over G))	1-2-3	2 9/8"				RUBBER	1-2-3	4 1/2"	G
			PLASTIC (over L (over G))	1-2-3	2 7/8"				RUBBER	1-2-3	10 3/8"	G
			PLASTIC (over D)	1-2-3	4 1/4"				RUBBER	1-2-3	5 1/8"	D
			PLASTIC (over L - UNDER 2-3)	1-2-3	4 1/8"				RUBBER	1-2-3	9 3/4"	D
			BOLT	1-2	15 1/2"	BOLT	23	1 1/8"	RUBBER	1-2-3	14 1/8"	D
			BOLT	1-2	14 1/2"	BOLT	2-3	7/8"	RUBBER	1-2-3	6 1/2"	C
			BOLT	1-2	14 3/4"	BOLT	2-3	9/16"	RUBBER	1-2-3	14	B
			RUBBER	1-2-3	9 1/2"	MED. BOLT	2-3	10 3/8"				B
			SCREW	1-2	5 3/8"	LG. BOLT	2-3	5 3/8"	SCREW + NUTS	1-2	1	A
			BOLT	1-2	7 1/8"	MED. BOLT	2-3	2 1/4"	RUBBER	1-2-3	4 1/8"	A
			LONG BOLT	1-2	8 3/4"	LG. BOLT	2-3	3 1/4"				G
						BOLT	2-3	1 1/8"				D
8va. to			SCREW + RUBBER	1-2	4 7/8"							D
16va. to			ERASER (over 2)	1	6 3/4"							D

\* MEASURE FROM BRIDGE.

# Nové systémy generování náhody

- Kniha proměn
- Hvězdné atlasy
- Šachová partie
- ....
- ....
- ....

# Princip náhodného generování předem zadaných parametrů

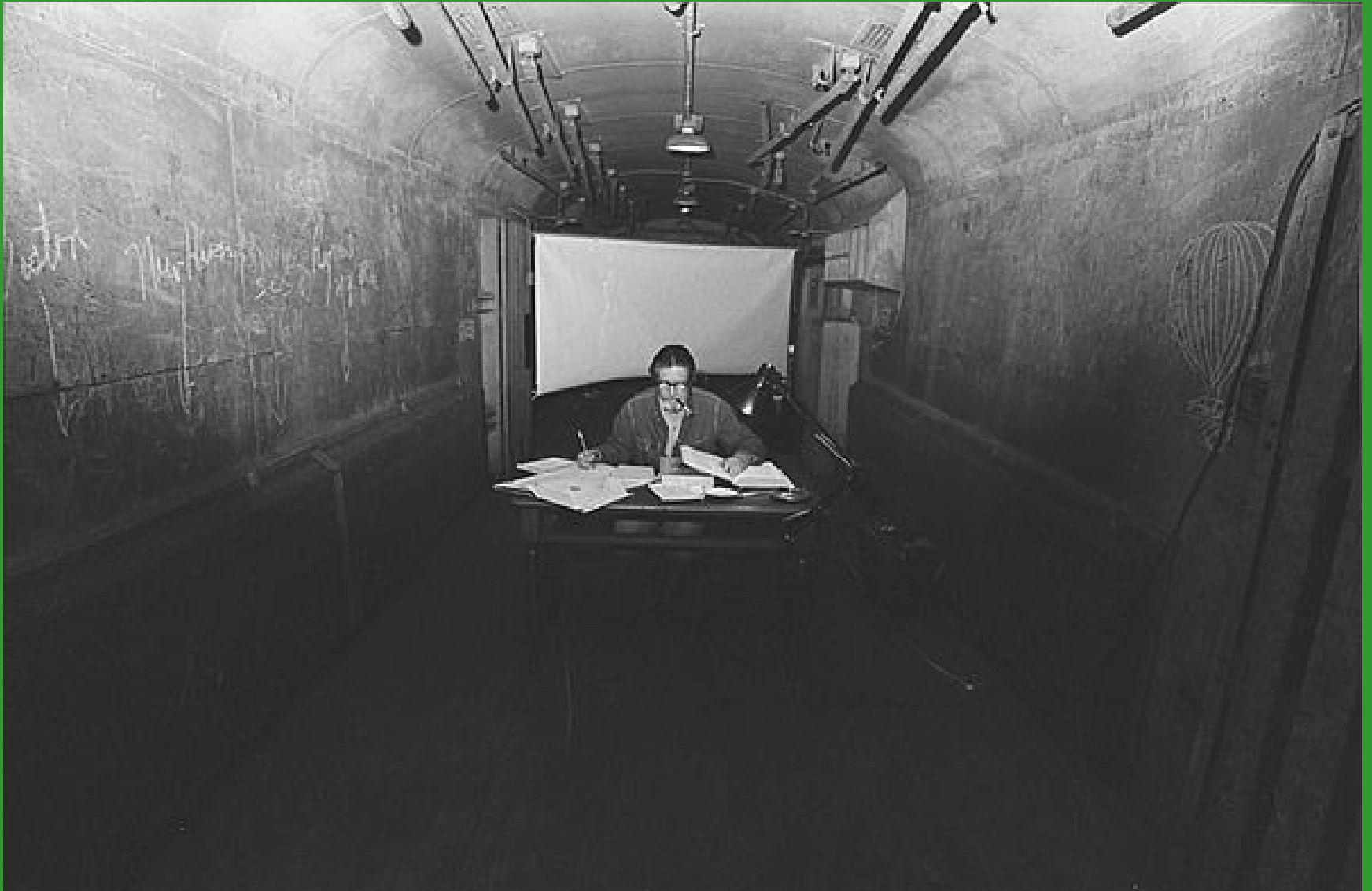
- Zadány vstupní parametry
  - Mobily (modely) –
  - Kodifikované znaky –
  - – Iannis Xenakis
- Ponecháno osudu
  - Technika, systém, řád – seriální, multiseriální, stochastická hudba
  - Čas, vnější jevy – netradiční nástroje
  - Akustický prostor –
  - Divák – interaktivita –
  - Interpret –



# Music of Changes (1951)



# Imaginary Landscapes



# Cartridge Music 1960

<http://www.youtube.com/watch?v=DDK8F18FnRY>

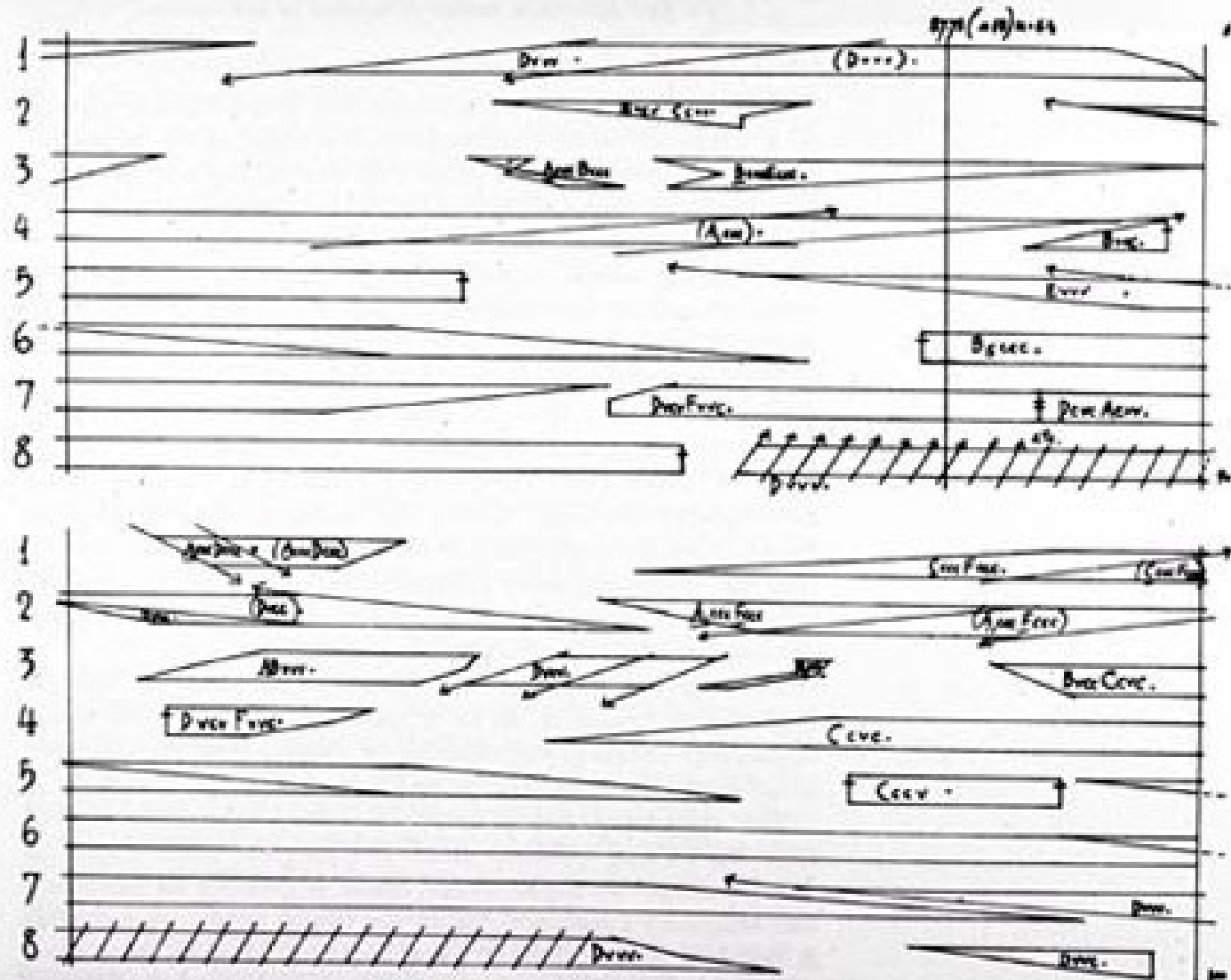
- Gramofonové jehly



# silent

- <http://www.youtube.com/watch?v=hUJagb7hL0E>

# Rozart mix



# Litany for the Whale

<http://www.youtube.com/watch?v=uc5LKuSGBag>



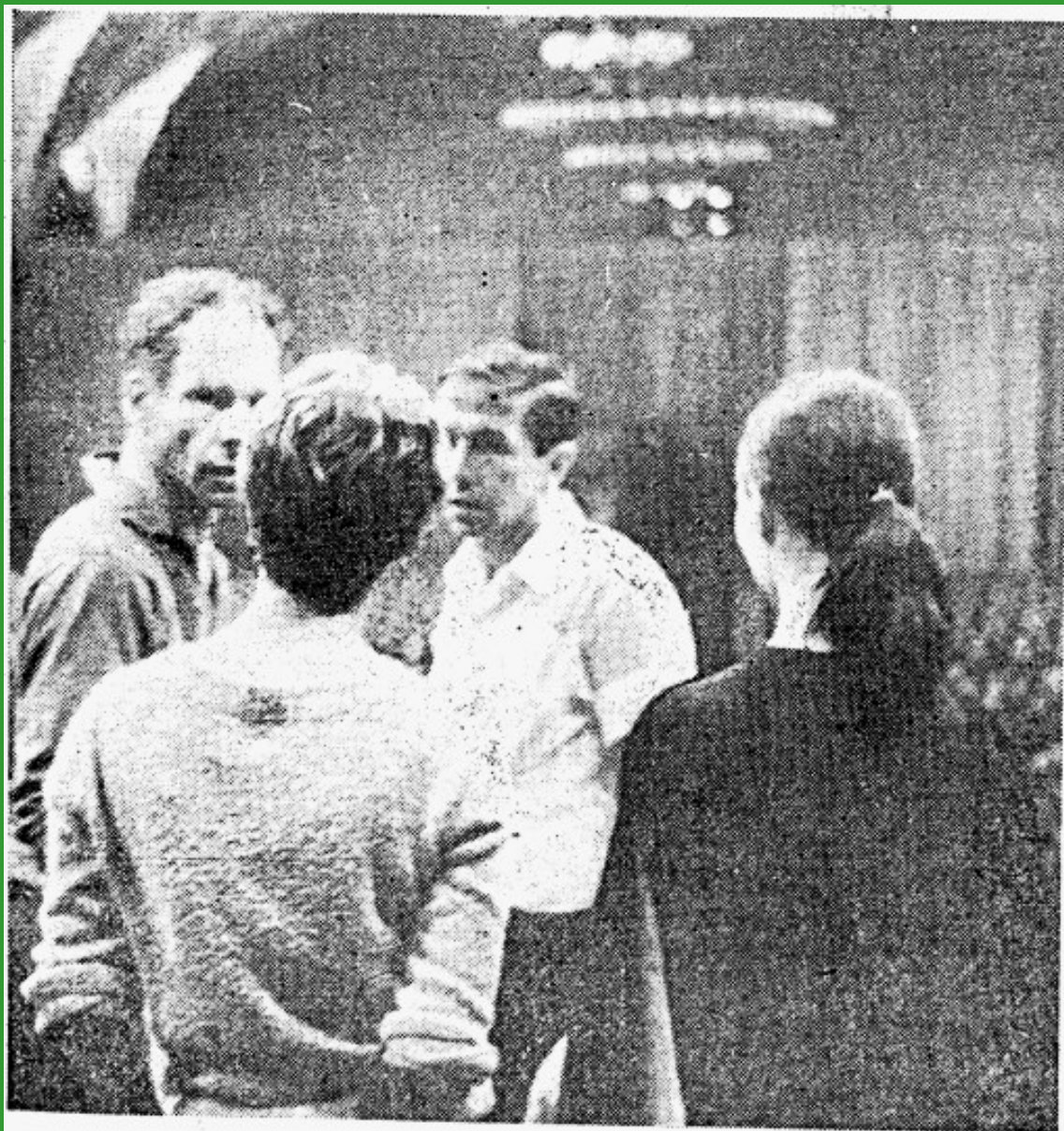
This image shows a page of handwritten musical notation on aged, yellowed paper. The notation is organized into several systems, each consisting of a staff with notes and a line of text below it. The notes are written in a historical style, likely from the 16th or 17th century, and are accompanied by lyrics in a script that appears to be a form of Arabic or Persian. The paper shows signs of age, including some staining and discoloration. The overall appearance is that of an old manuscript or score.

# Merce Cunningham and John Cage





Při zkoušce v Praze. Vzadu Merce Cuningham a Robert Rauschenberg



ONE

