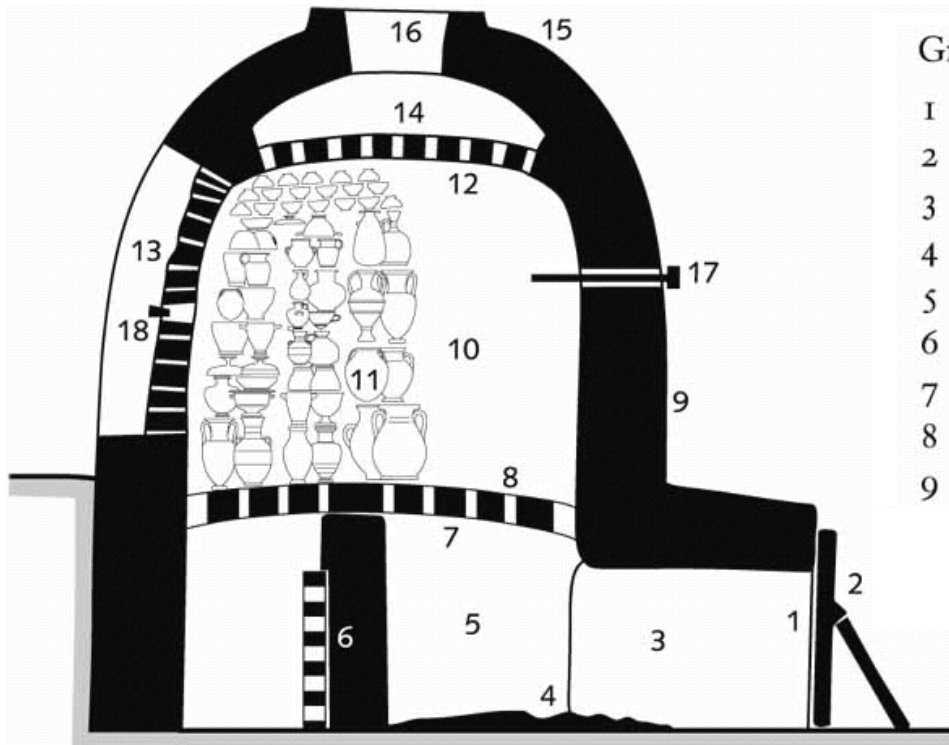


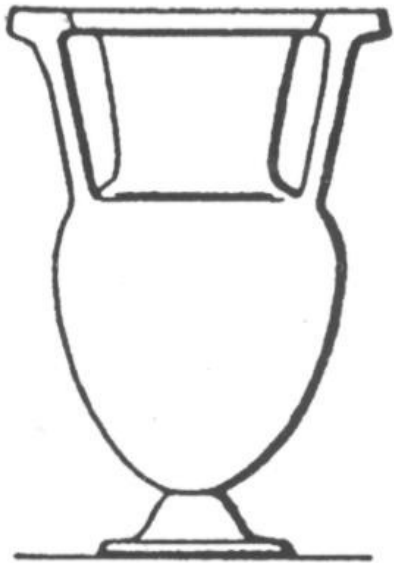
Dějiny Řecka I. seminář

3. TÉMA ŘECKÁ KERAMIKA TEMNÉHO A ARCHAICKÉHO OBDOBÍ

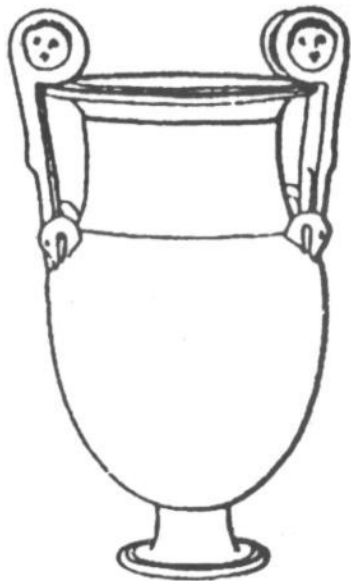


Greek pottery kiln (reconstruction by A. Winter)

- | | | | |
|---|----------------|----|----------------------------|
| 1 | Stoke-hole | 10 | Firing chamber |
| 2 | Fender | 11 | Vessels to be fired |
| 3 | Flue | 12 | Intermediate ceiling |
| 4 | Firing | 13 | Plastered-up stacking port |
| 5 | Furnace | 14 | Smoke dome |
| 6 | Kolonna | 15 | Dome |
| 7 | Diaphragm | 16 | Vent hole |
| 8 | Flame channels | 17 | Spy-hole |
| 9 | Kiln casing | 18 | Spy-hole |



SLOUPKOVÝ KRÁTÉR



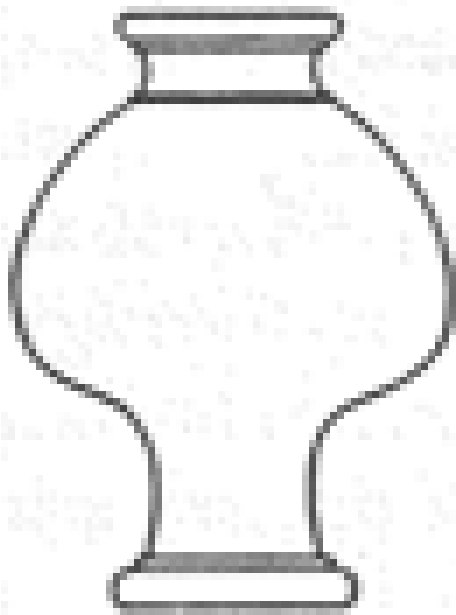
VOLUTOVÝ KRÁTÉR



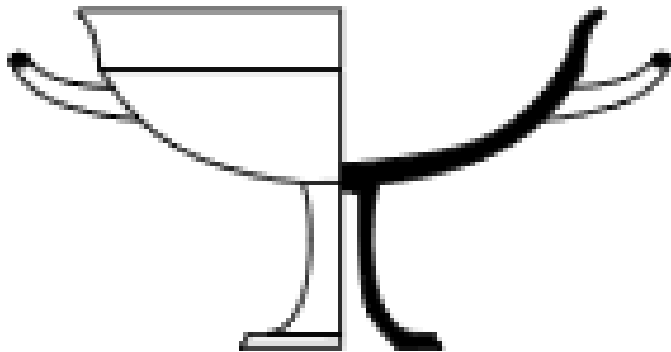
ZVONCOVÝ KRÁTÉR



KRÁTÉR KALICH



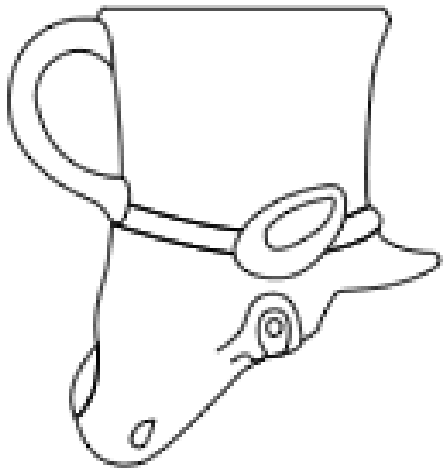
PSYKTÉR



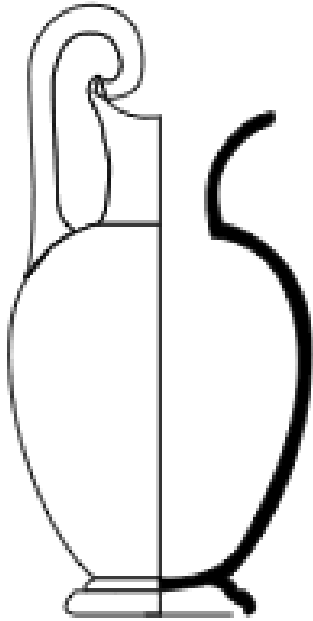
KYLIX



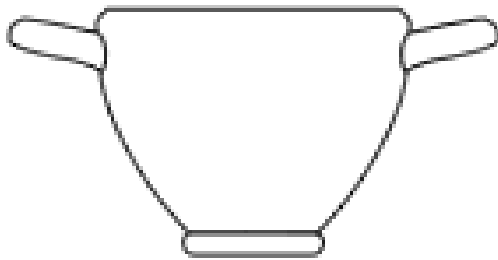
KANTHAROS



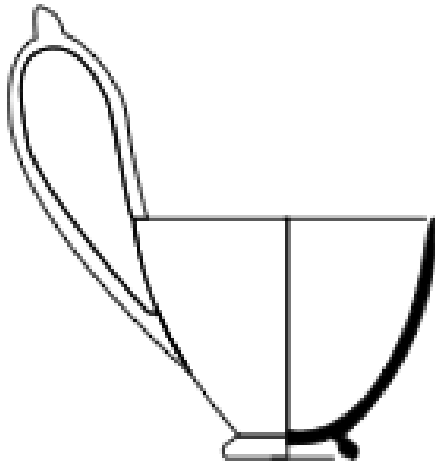
RHYTON



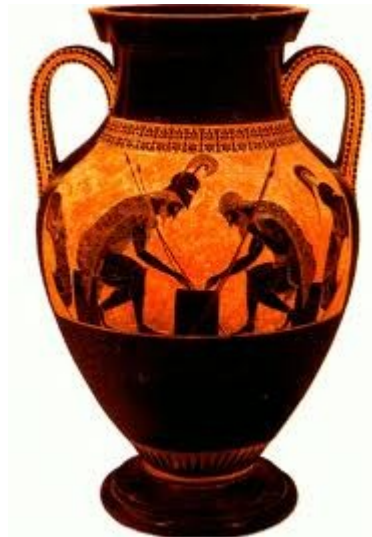
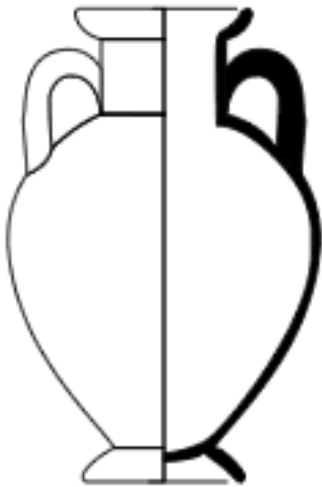
OINOCHOE



SKYPHOS



KYATHOS



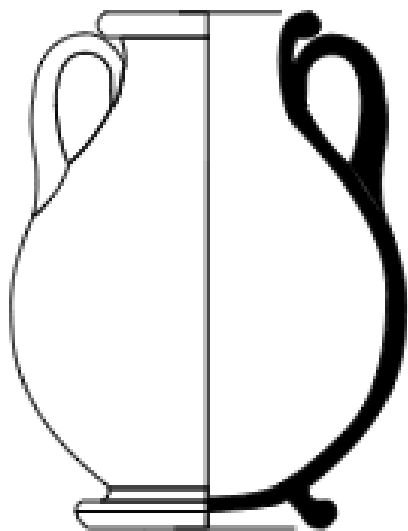
AMFORA



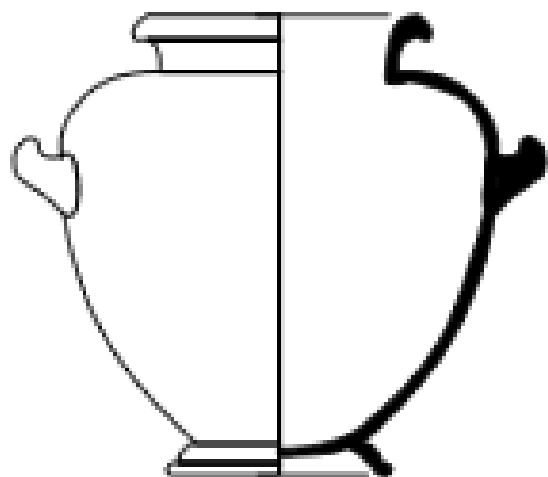
PANATHENAJSKÁ AMFORA



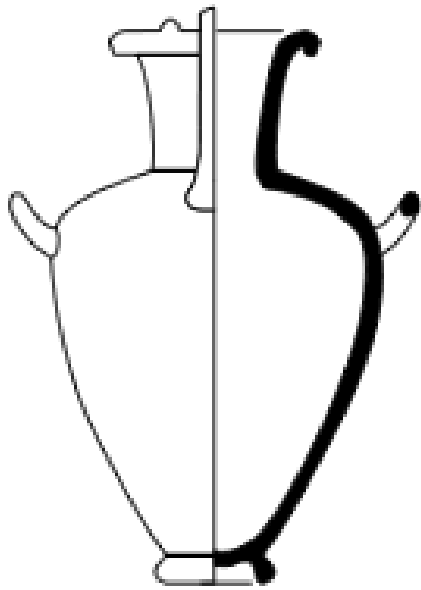
TRANSPORTNÍ AMFORA



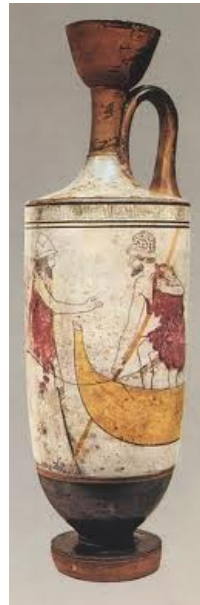
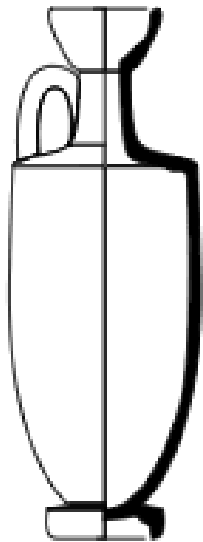
PELIKÉ



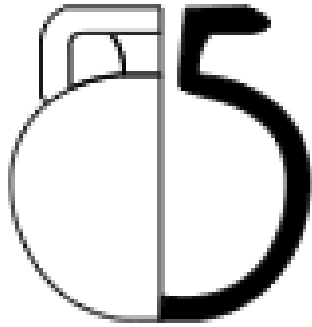
STAMNOS



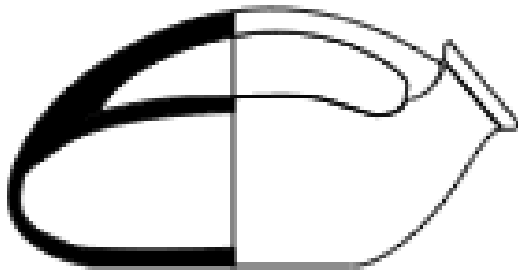
HYDRIA



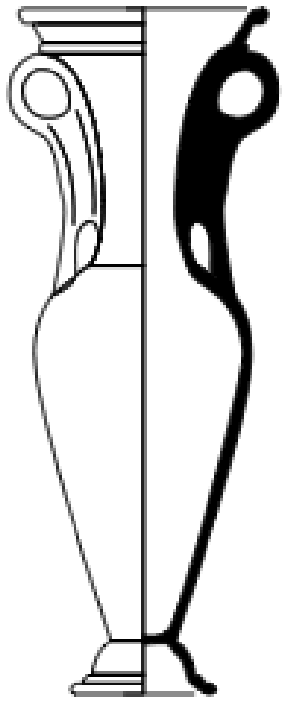
LEKYTHOS



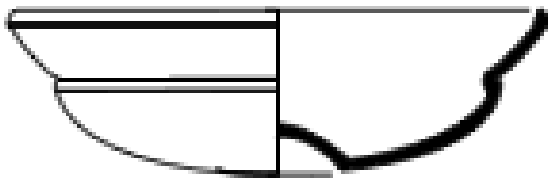
ARYBALLOS



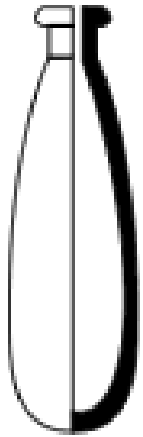
ASKOS



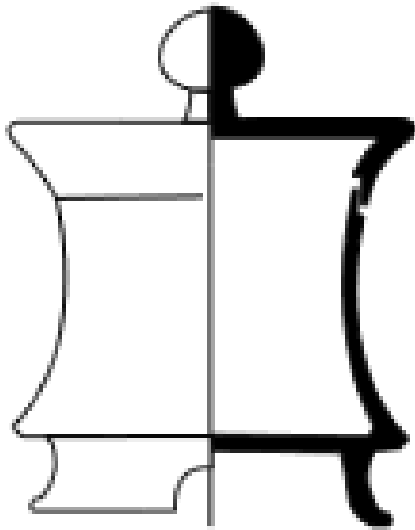
LUTROFOROS



PHIÁLÉ



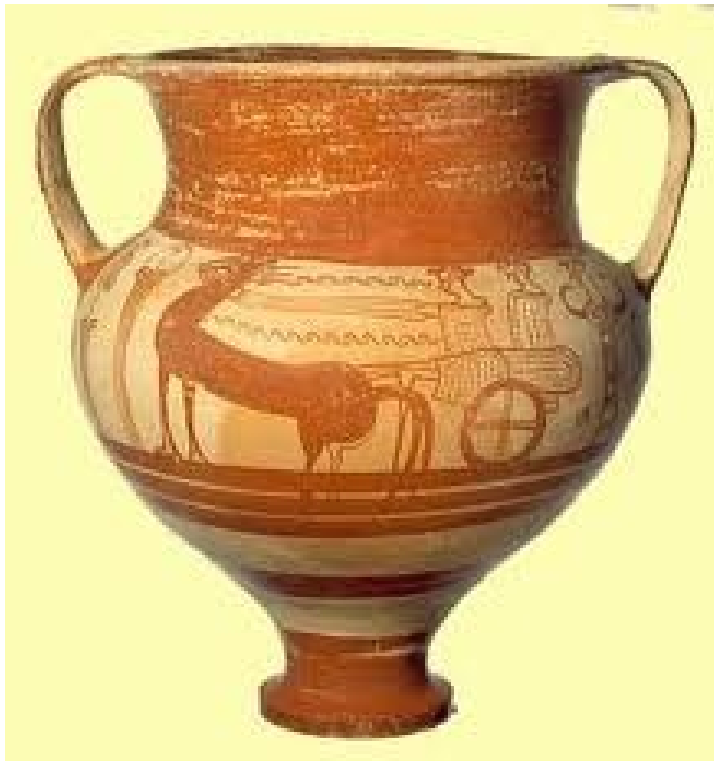
ALABASTRON



PYXIS

GEOMETRICKÝ STYL

Submykénský sloh



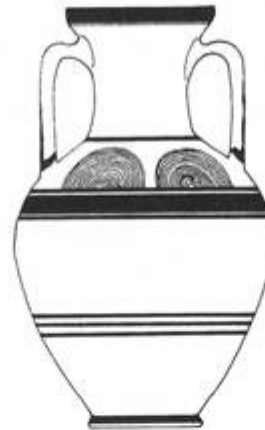


Protogeometrický sloh





BELLY-HANDLED AMPHORA



NECK-HANDLED AMPHORA



SHOULDER-HANDLED AMPHORA



LIP-HANDLED AMPHORA



TREFOIL-MOUTHED OINOCHOE

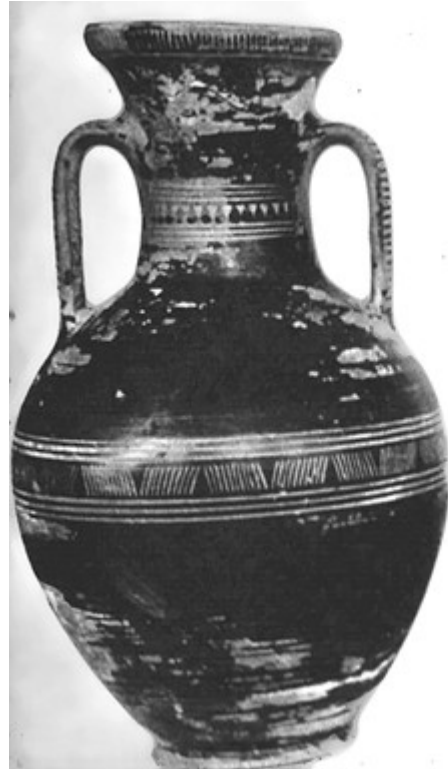
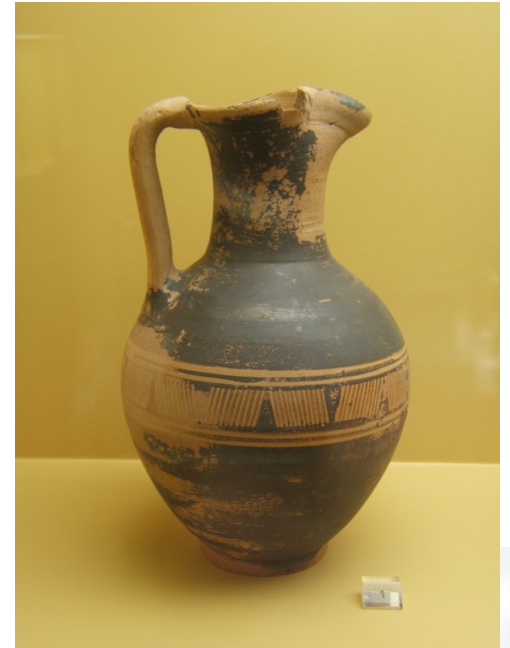


LEKYTHOS



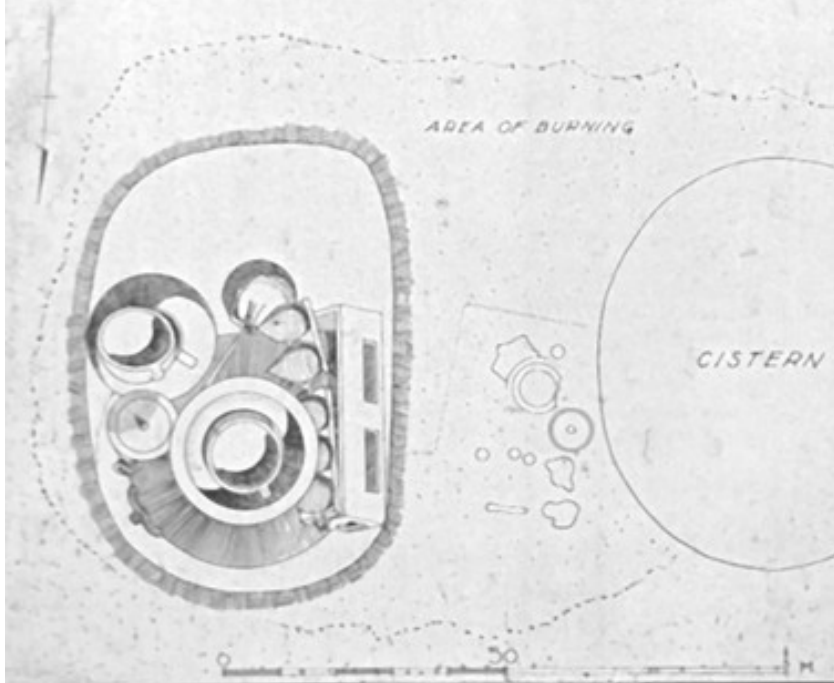
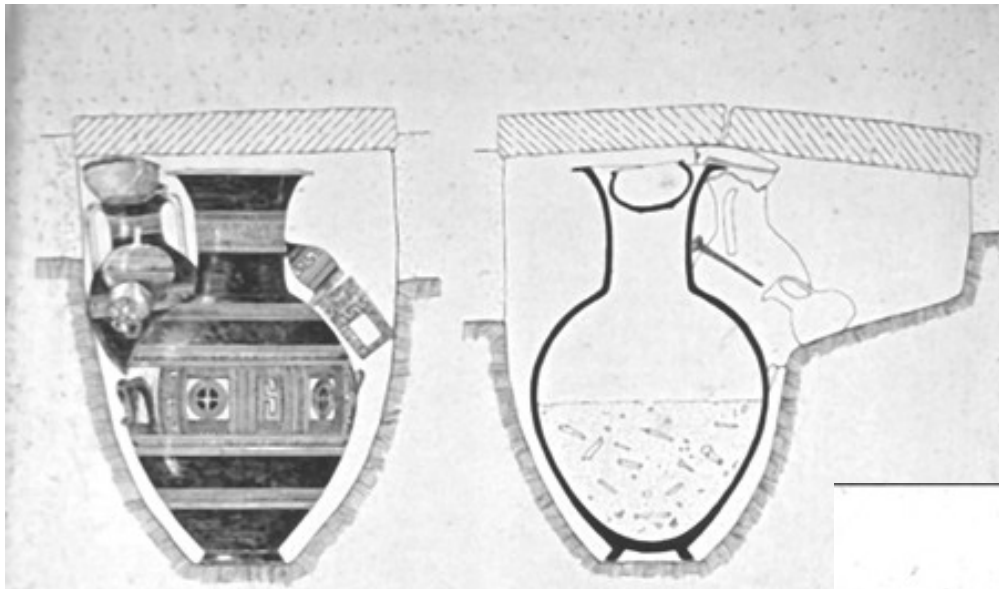
FOOTED CUP

Raný geometrický sloh



Střední geometrický sloh







Pozdní geometrický sloh





Dipylská amfora



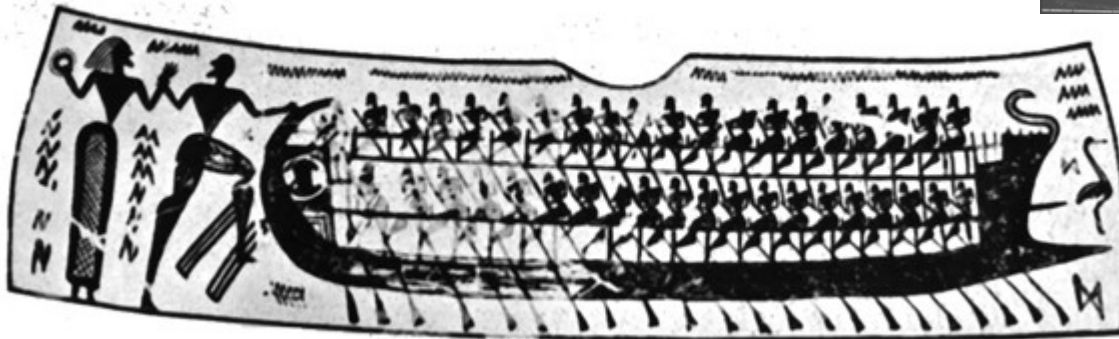


Dipylský krátér





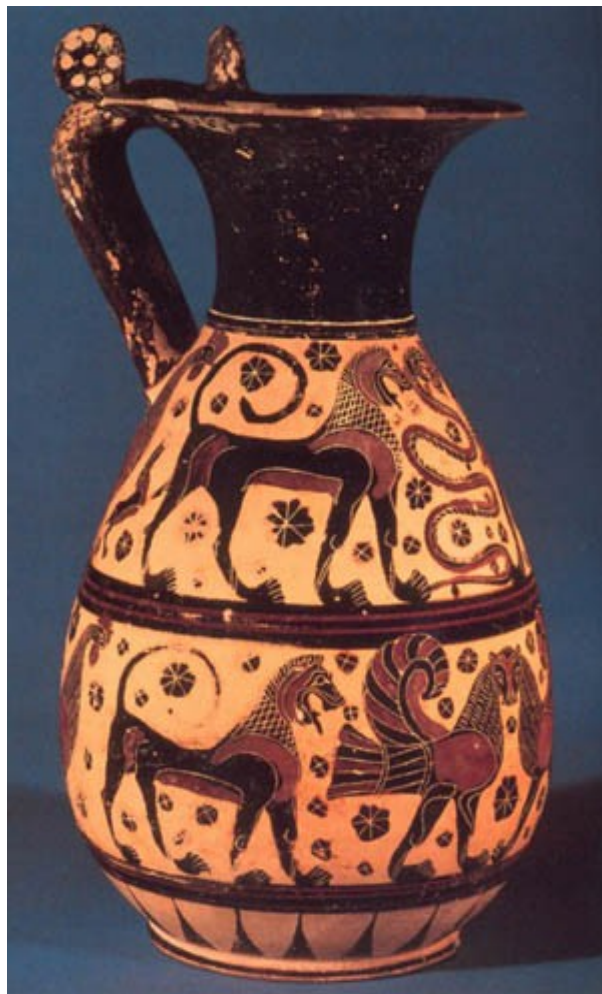
Ztroskotání Odyssea (?)



Paris a Helena (?)



Orientalizující sloh









Attická černofigurová keramika



Malíř Nessa



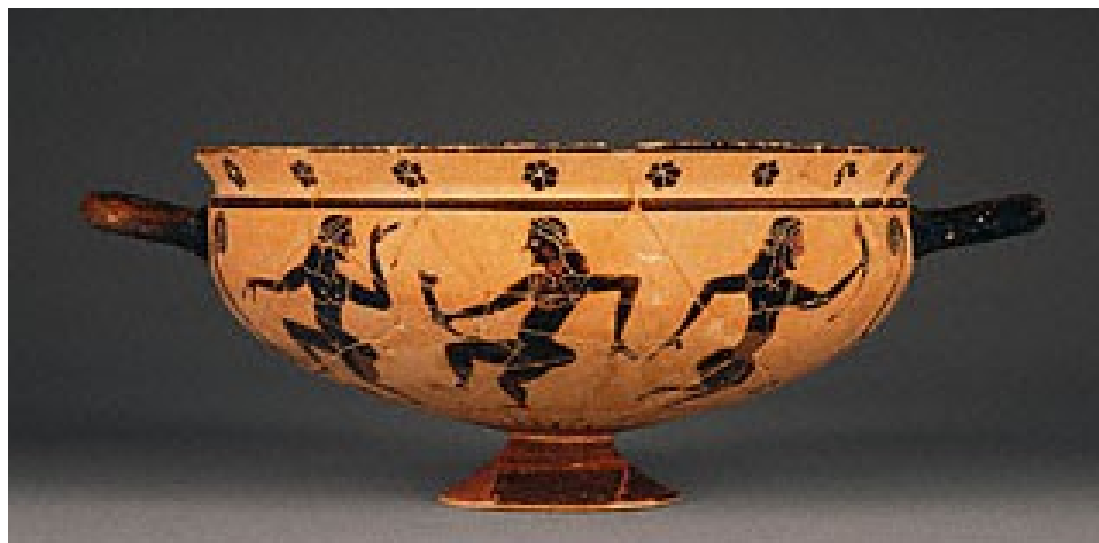
Malíř Gorgony



Sofilos



Číše s komasty





Krater Françoise

Nearchos



Amasis

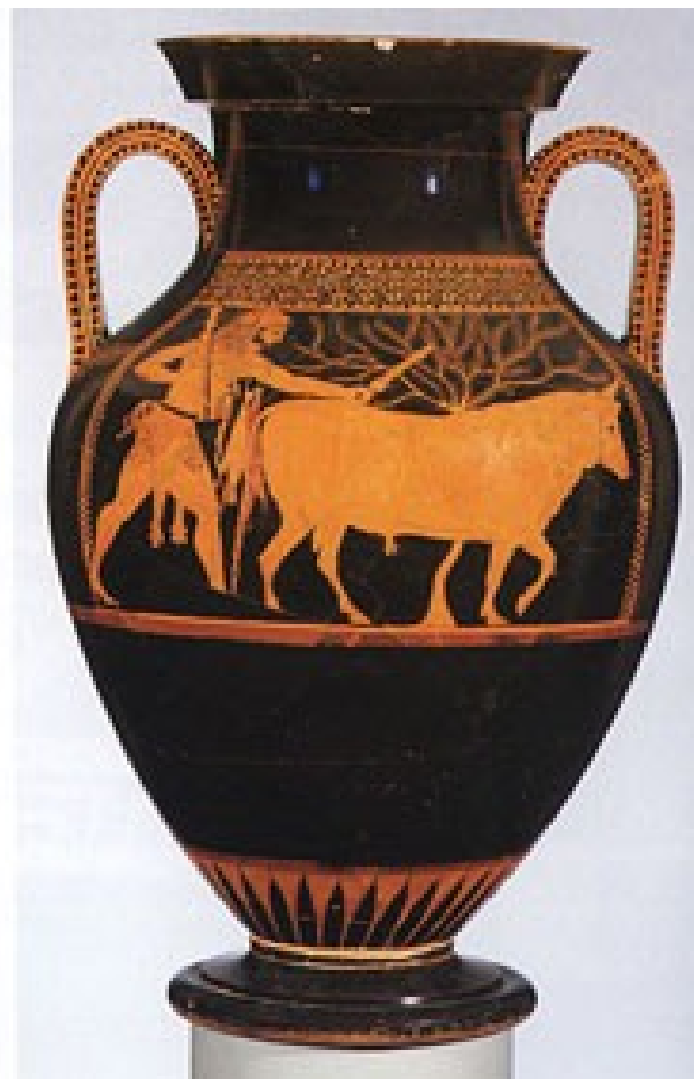
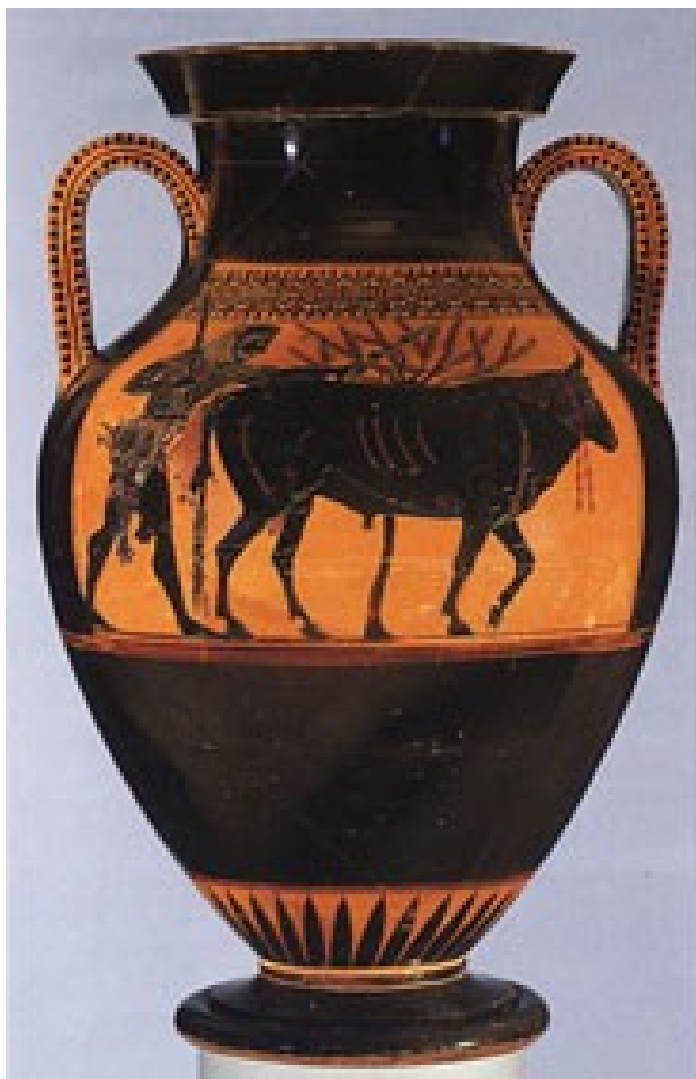




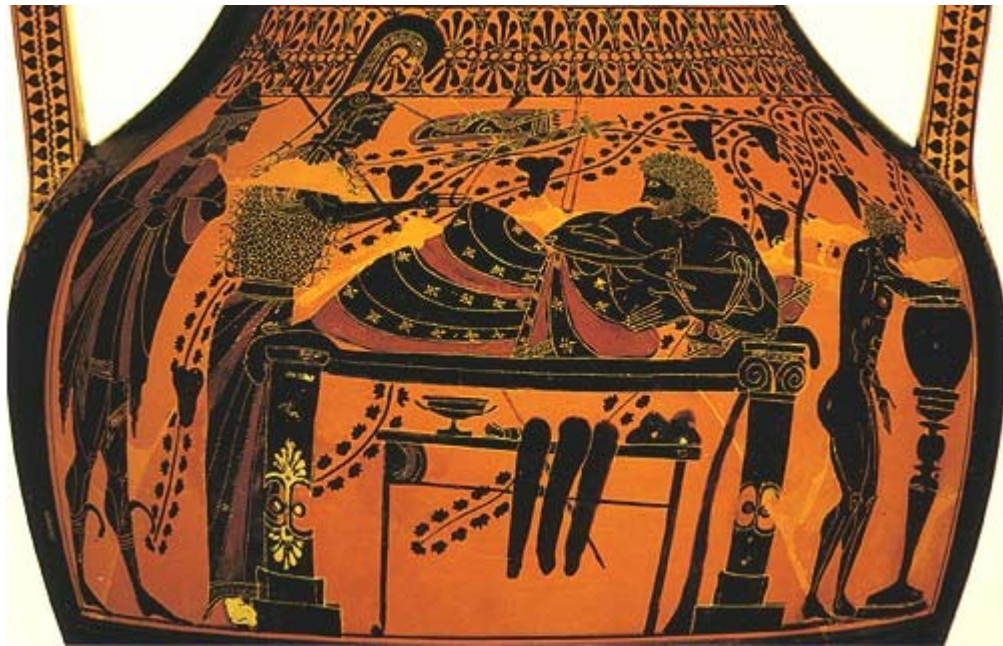


Exekias





Andokidův malíř



LITERATURA

- BOARDMAN, John. *Řecké umění*. Praha, 1975.
- BOUZEK, Jan – ONDŘEJOVÁ, Iva. *Řecké umění*. Praha, 2004.
- FREL, Jiří. *Řecké vázy*, Praha, 1956.
- cokoliv od J.D.BEAZLEYHO
- cokoliv od A.D.TRENDALLA