

KSCA007 Chinese Language

||

Instructor: LI XIN YU





Introduction

Office hours: Wednesday 10:00-11:00

email: momoll0124@gmail.com

5007 mail.muni.cz



Syllabus

Distribution ratio:

Attendance : 30%

Classroom performance : 10%

Class quizzes : 30%

Homework: 30%

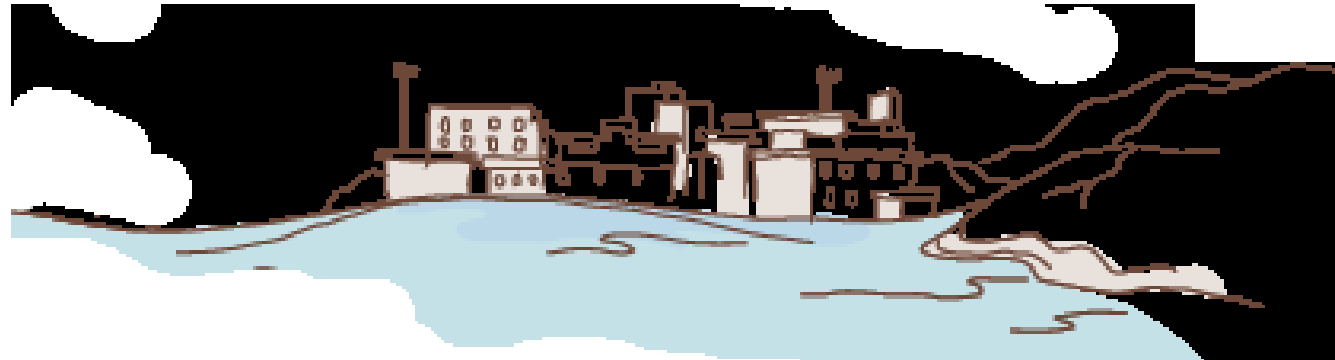


Attendance: You can ask for leave fouth (without deduction of points), ask for leave more than 4 times or unexcused absence deduct 3 points once. If you are late for 1 hour is equal to absence once. **Student can not exceed 4 times unexcused absences, otherwise can not participate in the final exam.**

If you want to ask for leave, please provide the relevant proof, for example, If you want to take sick leave, please provide a doctor's diagnosis certificate.**then hang in the proof to student's office.**



Classroom quiz: There will be a class quiz **every Wednesday**. The content of the quiz is the vocabulary (**character+pin yin**) and text learned in the last class. The form of the quiz is dictation. if you can't take the exam because you're asking for leave, you may take a make-up exam(office hour). **If you are unexcused absent, you will not be able to take the make-up exam.** If you miss an exam once, you will **3 points were deducted.**



Homework: Hand in the homework **every Wednesday**, and did not hand in homework once will deduct 3 points. Those who ask for leave and those who are absent **can make up for the homework at the next class (no deduction)**. Next time you have to hand in your **last unpaid homework + this homework** (ask your classmates or write a letter to the teacher asking about the assignment.)

Example: StudentA asked for leave on October 1, and A had to hand in two homework on October 2. one for September 30 and the other for October 2 .



Homework: Copy a new character (10 times) + pinyin(1time)
Copy text 1 time (+ pinyin)

To take the final exam, you need to score more than 70 points.

