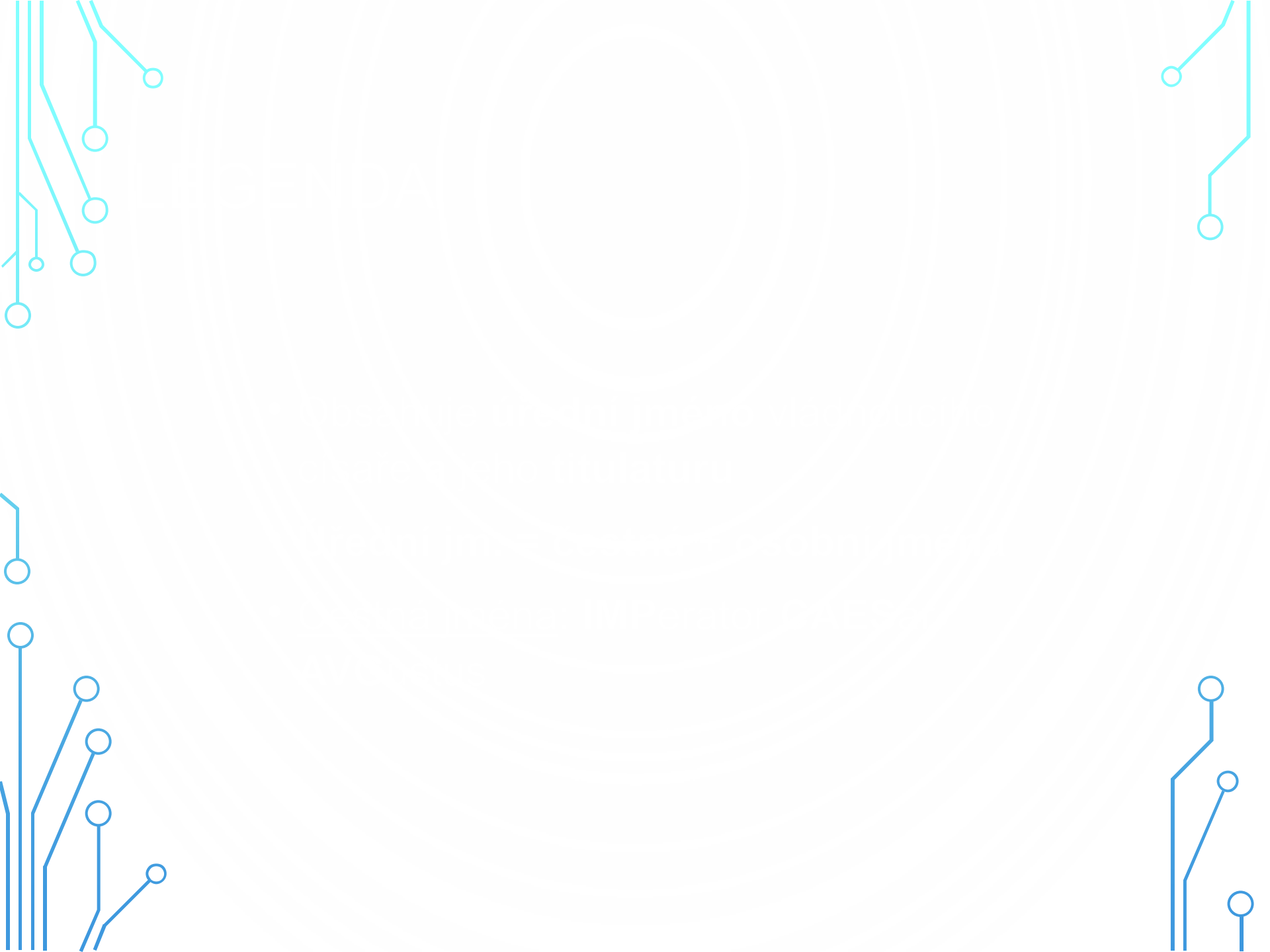
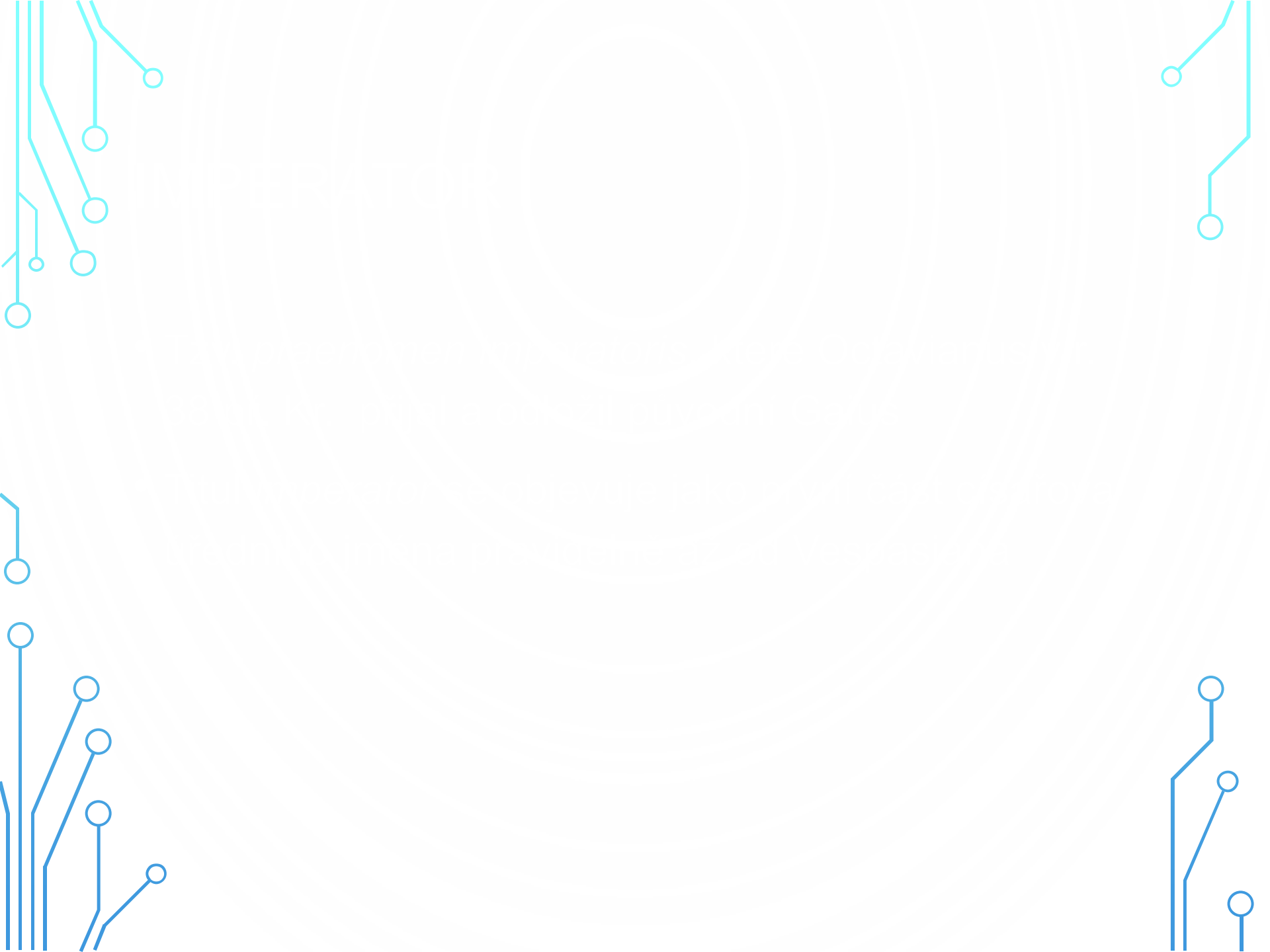


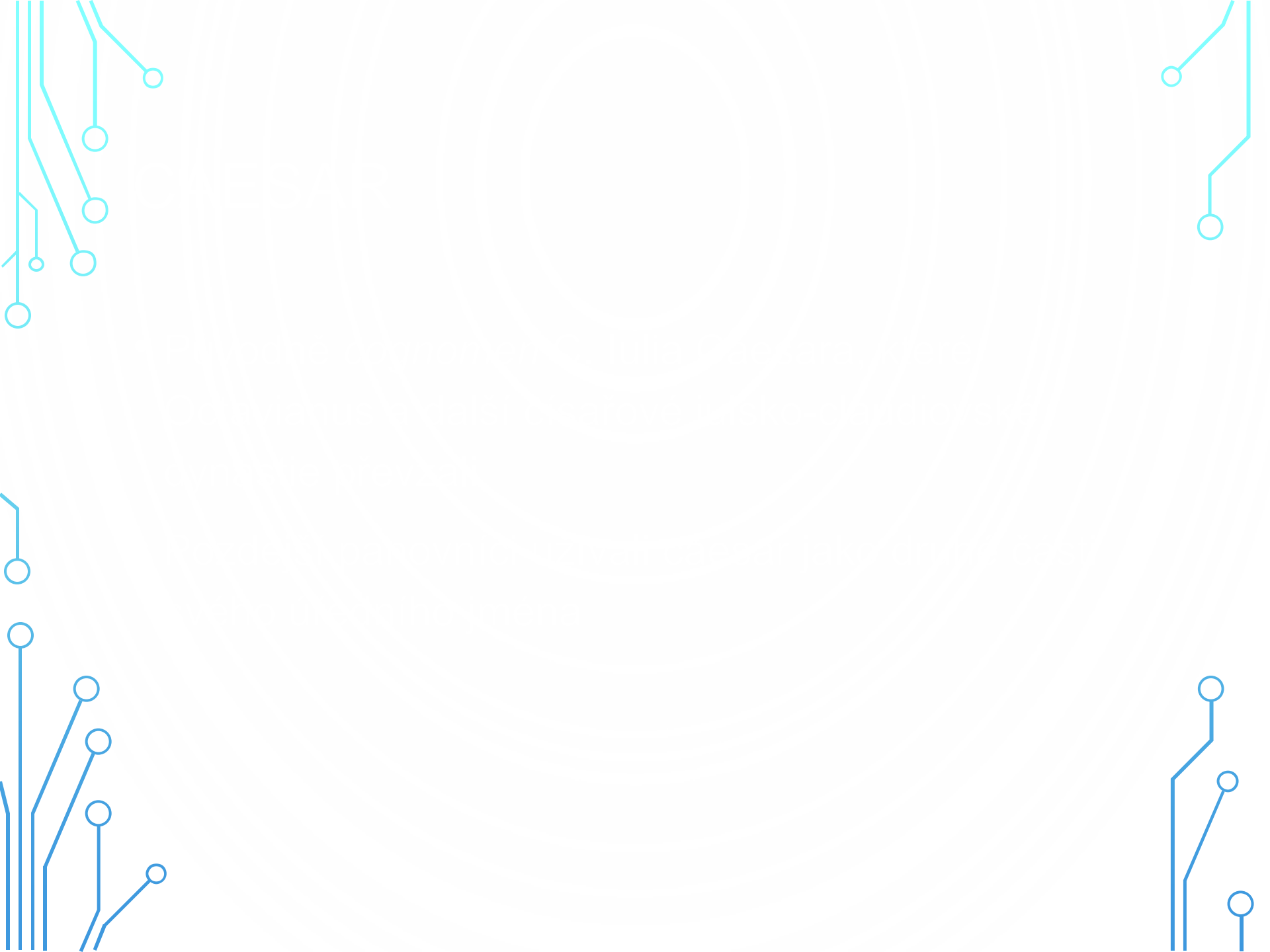
# PRINCIPÁT

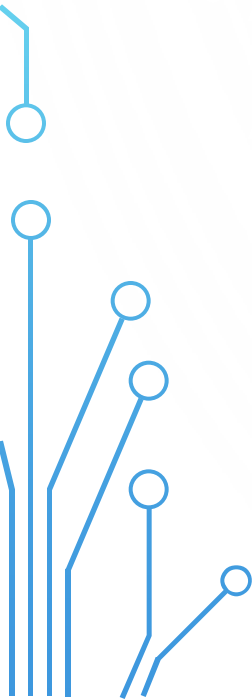
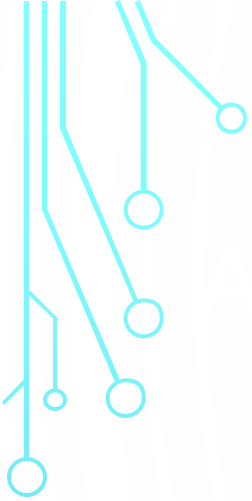


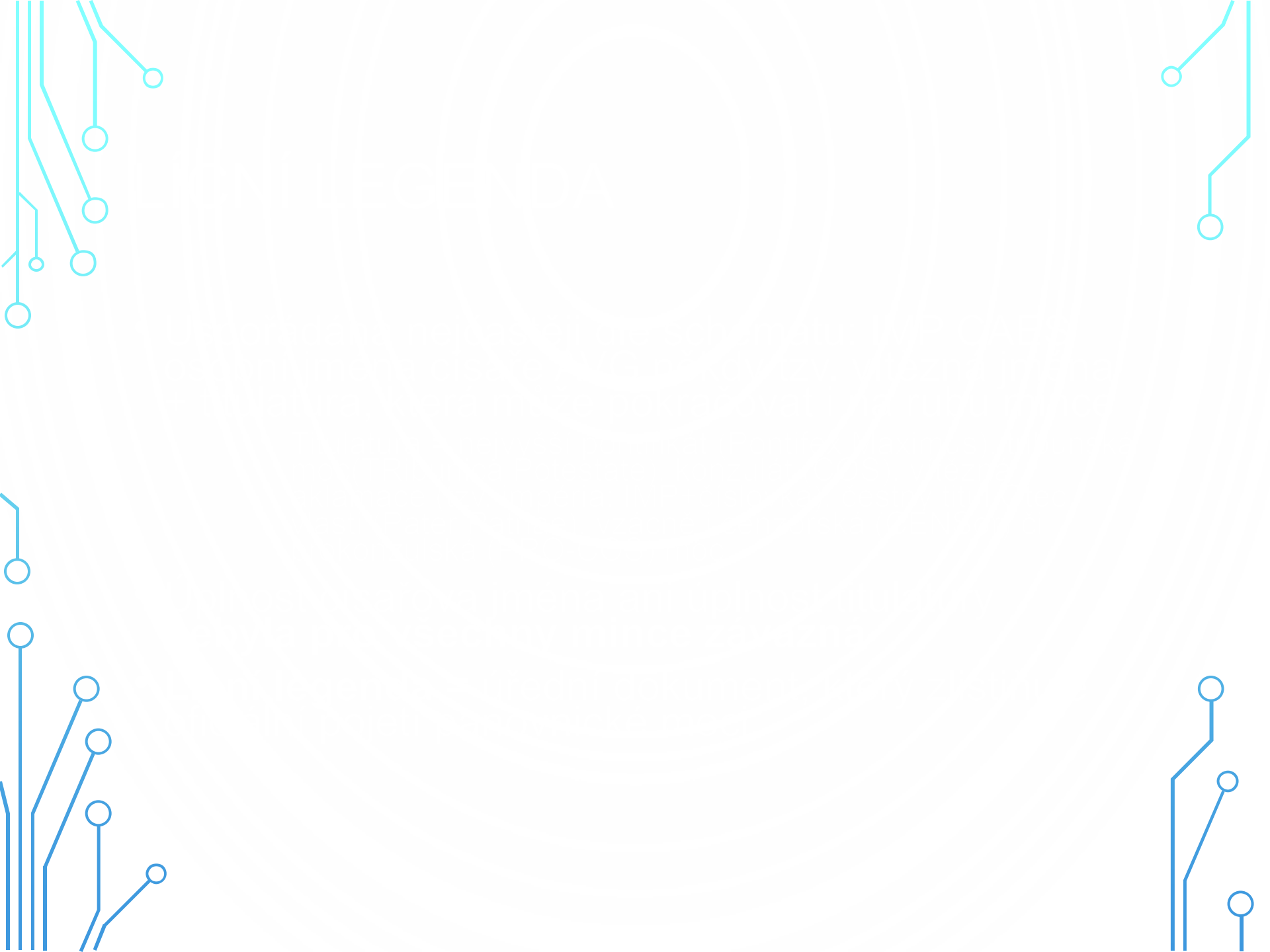
# ŘANÉ CÍSAŘSTVÍ

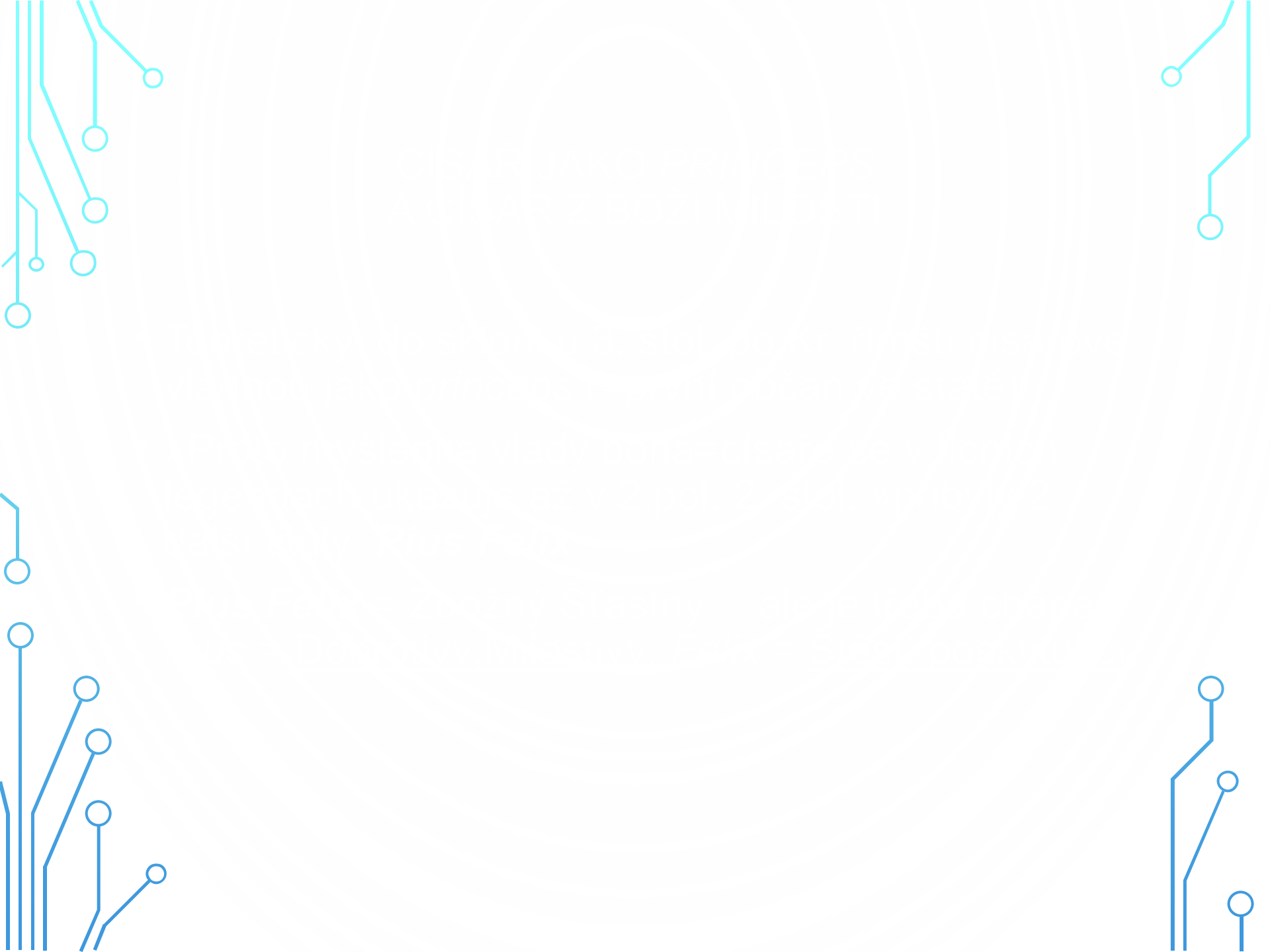










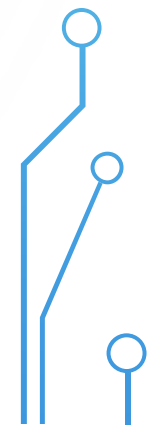
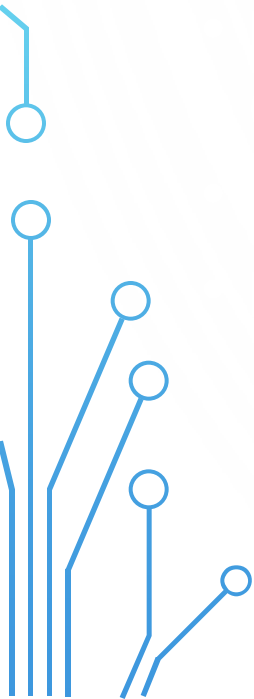
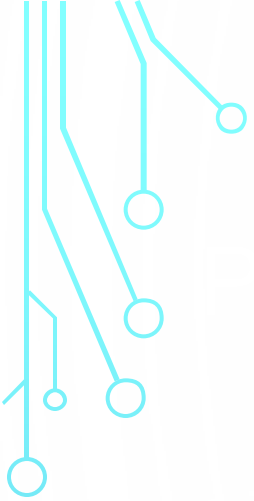


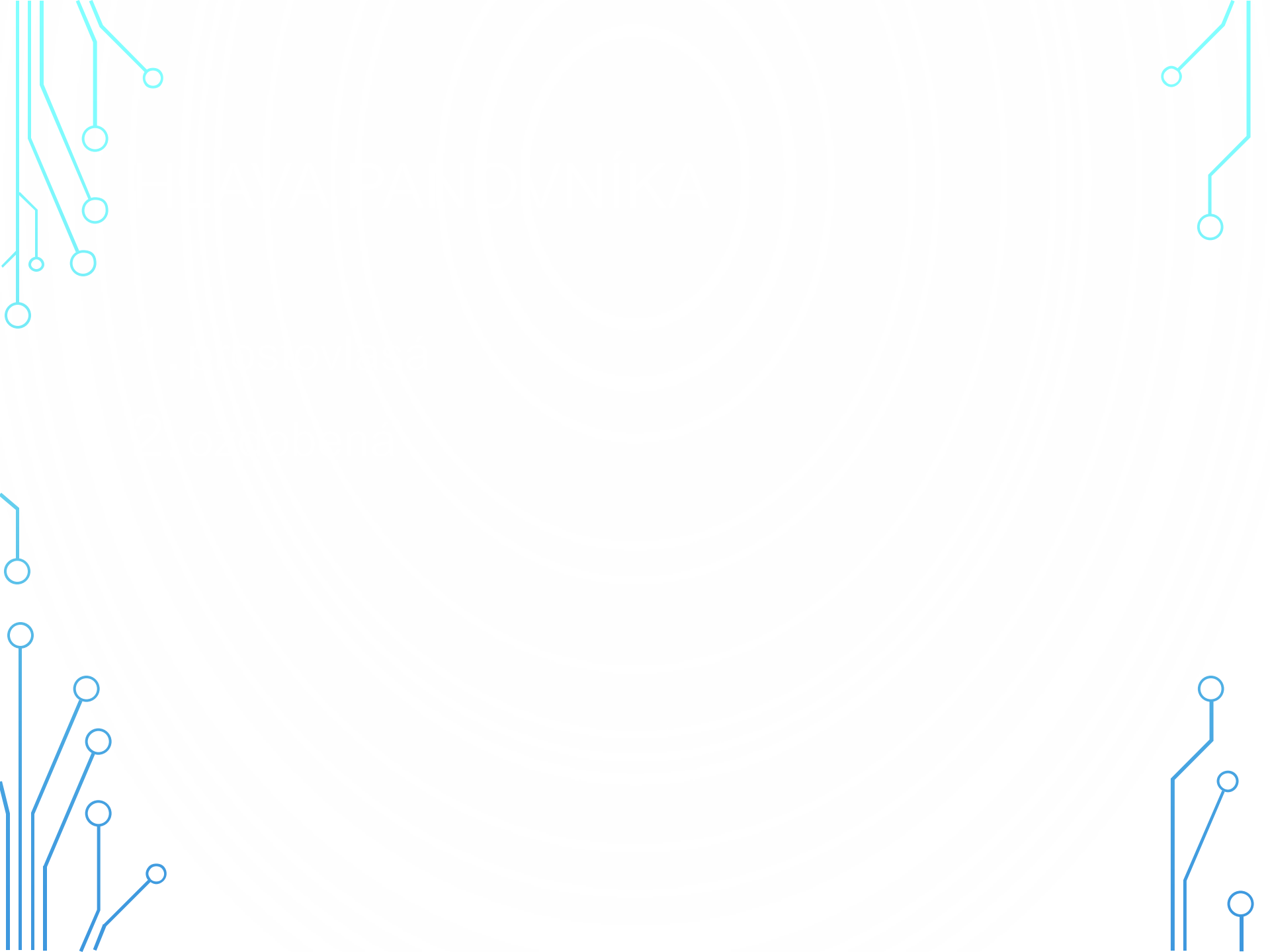


The image features a light blue background with a subtle, repeating pattern of a stylized circuit board. The pattern consists of interconnected lines and circular nodes, resembling a network or data flow. The pattern is most prominent in the corners, where it forms a decorative border. The lines are a light blue color, and the nodes are small circles of the same color. The overall effect is a clean, modern, and technical aesthetic.

# Antonius Pius

3. stol. po Kr.





DINUKA

z 1. pol. 1. stol. po Kr.

2. století

- **vavřínový věnec**
- **paprskovitá koruna**
- **dubový věnec**
- **věnec z klasů**



**Vespasianus, Titus, Nerva**









