

## **SOUTH:**

**MB I = ISIN – LARSA PERIOD – ca. 2000-1800**

**MB II = OLD BABYLONIAN PERIOD – ca. 1800-1595**

Alternative short chronology: 1659

The First Dynasty of Babylon

## **NORTH:**

**MB I = „TRANSITIONAL PERIOD” – ca. 2000-1800**

**MB II = OLD ASSYRIAN PERIOD – ca. 1800-1600**

Shamshi-Adad I

„Lim”-dynasty in Mari

## 1st dynasty of Babylon (short chronology)

Sumu-abum or Su-abu ca. 1830—1817 BC = Ilushuma of Assyria

Sumu-la-EI ca. 1817—1781 BC = Erishum I of Assyria

Sabium ca. 1781—1767 BC Son of Sumu-la-EI

Apil-Sin ca. 1767—1749 BC Son of Sabium

Sin-muballit ca. 1748—1729 BC Son of Apil-Sin

**Hammurabi ca. 1728—1686 BC = Zimri-Lim of Mari,  
Siwe-palar-huppak of Elam and Shamshi-Adad I**

Samsu-iluna ca. 1686—1648 BC Son of Hammurabi

Abi-eshuh ca. 1648—1620 BC Son of Samsu-iluna

Ammi-ditana ca. 1620—1583 BC Son of Abi-eshuh

**Ammi-saduqa ca. 1582—1562 BC Venus tablet of Ammisaduqa**

Samsu-Ditana ca. 1562—1531 BC Sack of Babylon

# ASHUR – OLD PALACE (up) URUK PALACE (down)

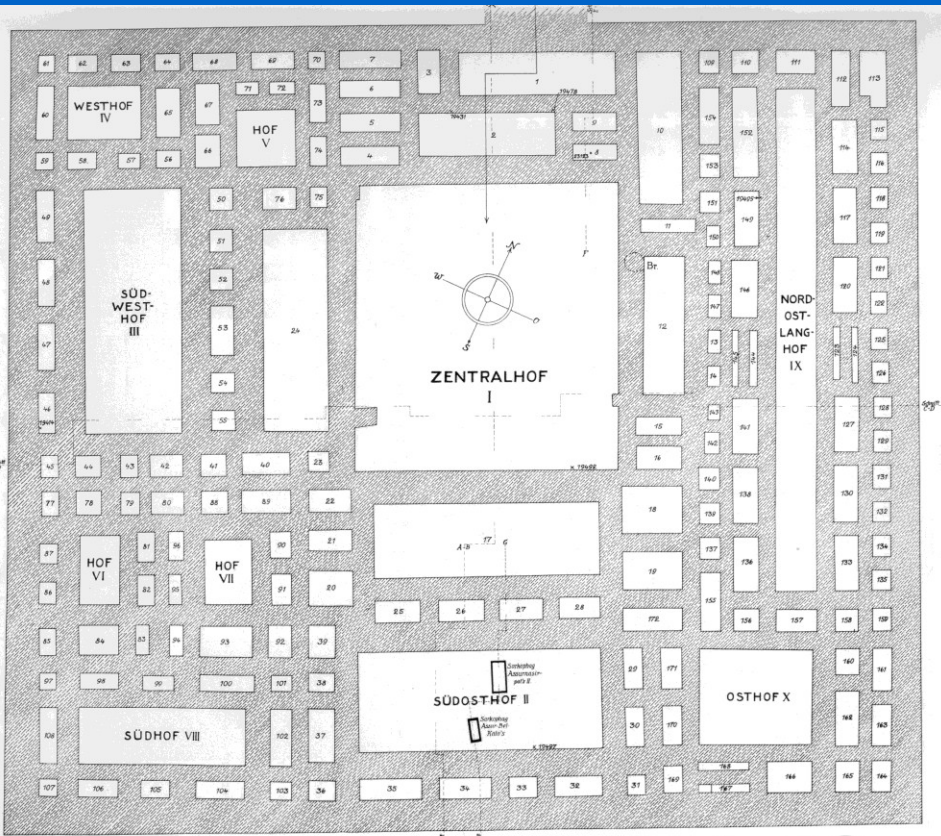
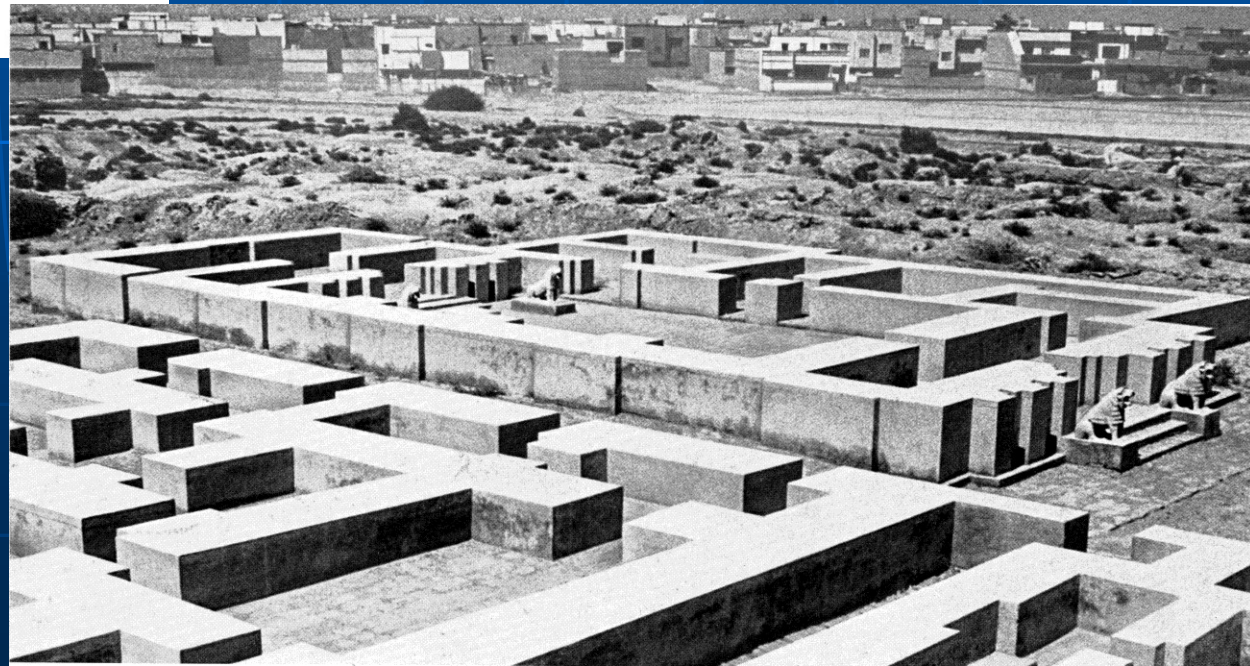
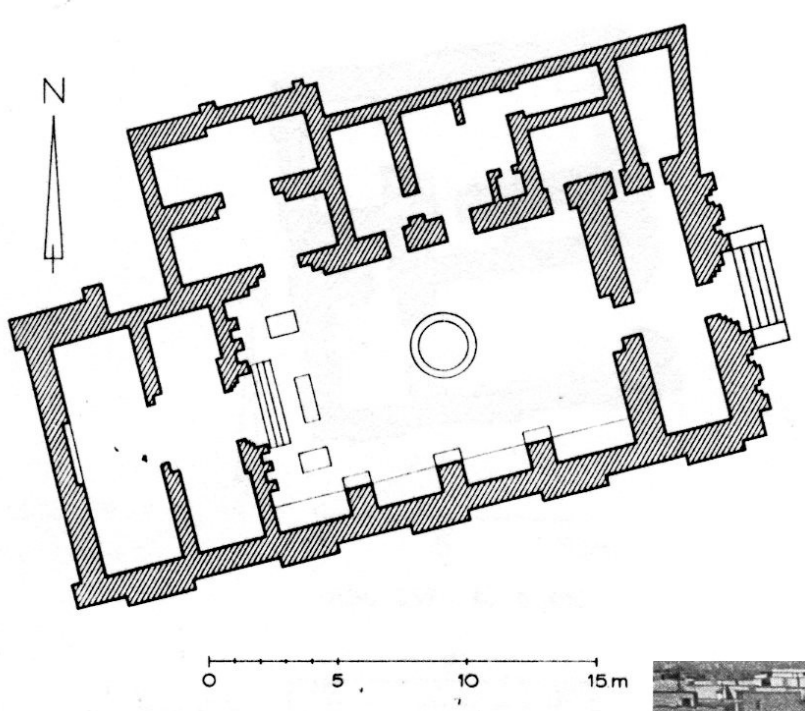


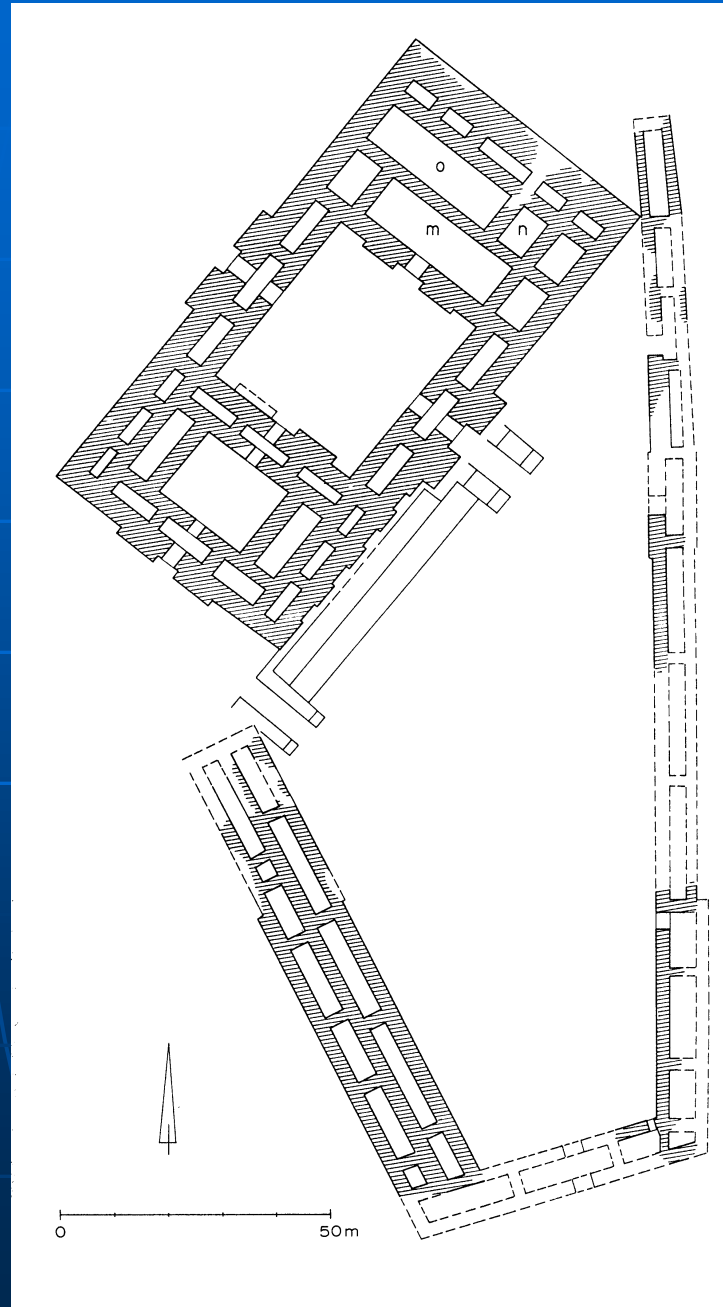
Abb. 23 Assur. Der 'Urplan des Alten Palastes'. M. 1:500



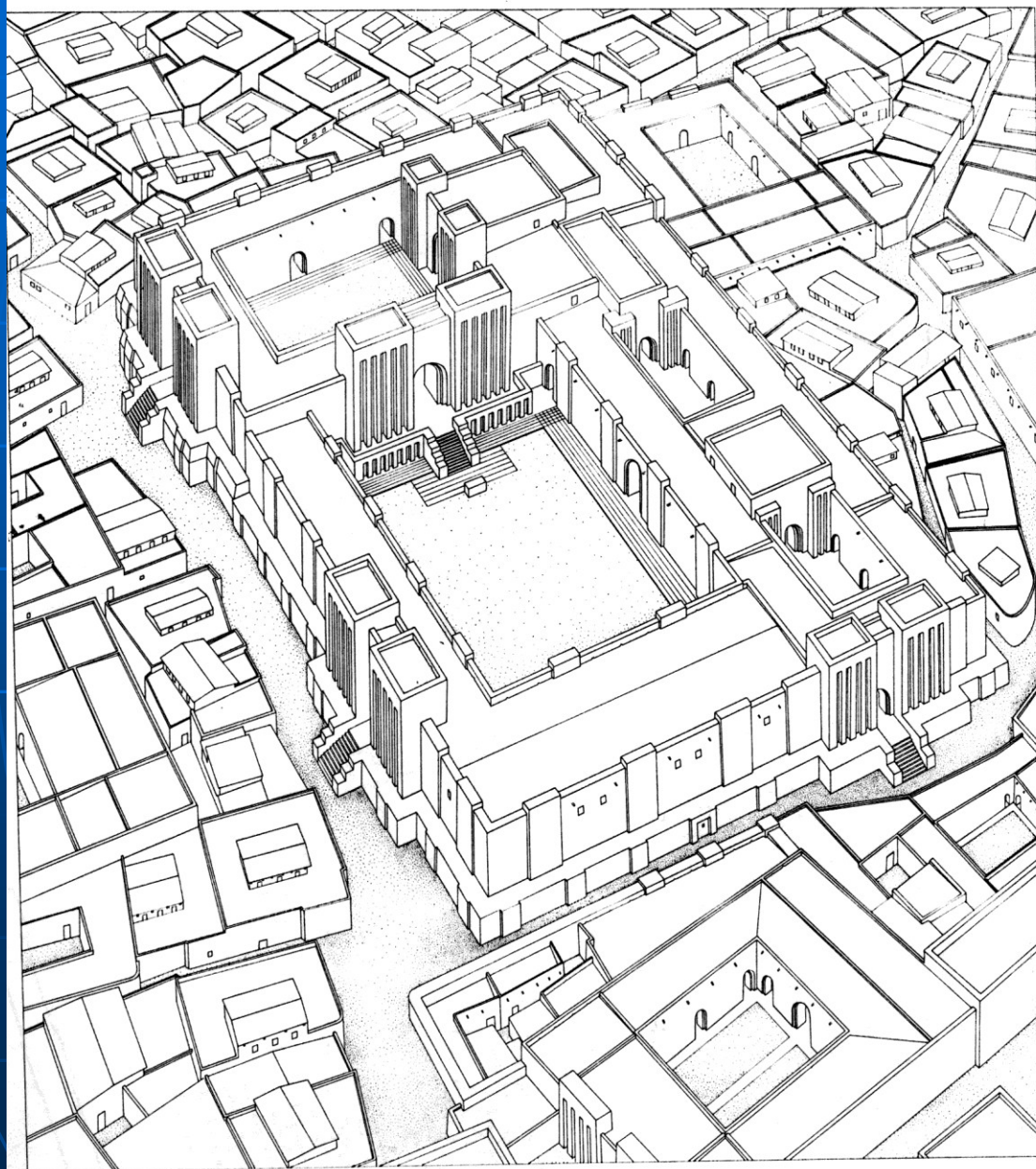
# TEMPEL OF HANI AND NISABA FROM SHADUPPUM (Tell Harmal)



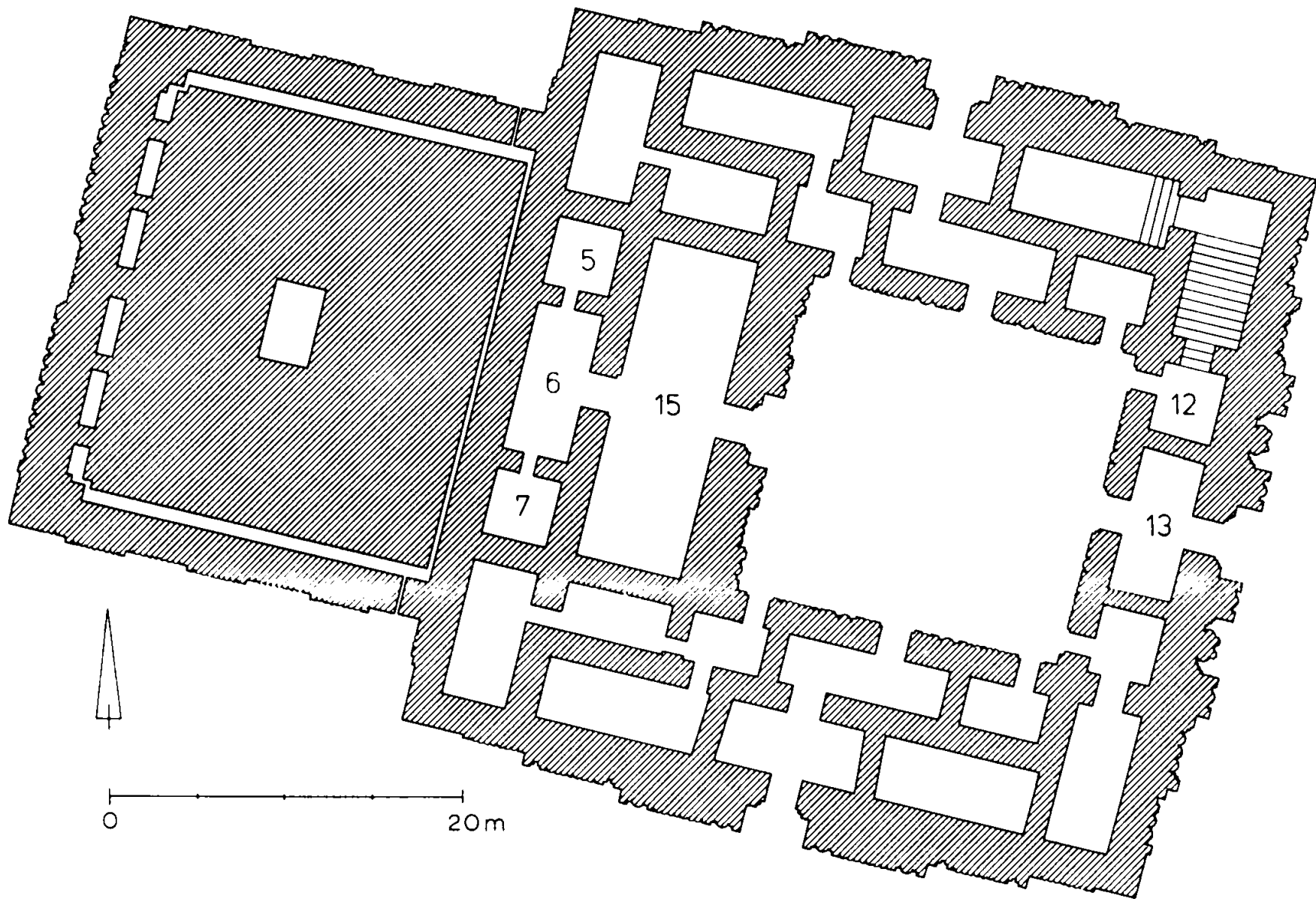
# ASHUR TEMPLE FROM ASHUR

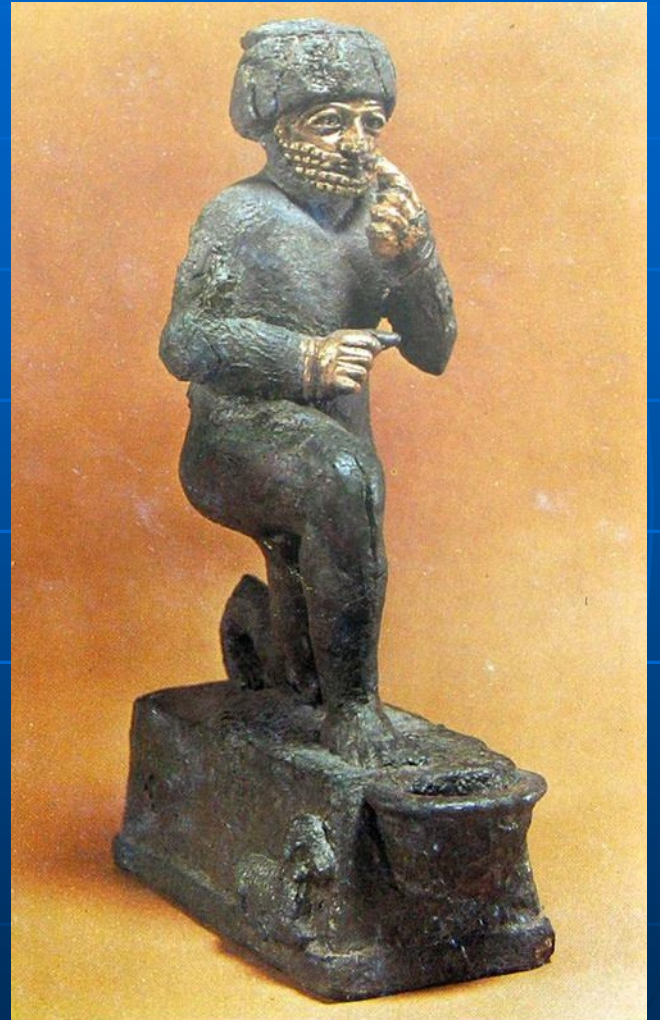


# ISHTAR-KITITUM TEMPLE FROM NEREBTUM (Ishjali)



# THE TEMPEL AND ZIGGURAT FROM TELL AR-RIMAH











# HAMMURABI'S LAW CODE STELE



**KARUM KANESH  
- MERCHANT COLONY**

LEVEL II ca. 1974-1836  
Burnt to the ground

Abandonment

LEVEL IB ca. 1798 -1740  
Colony destroyed by fire

LEVEL Ia  
Without Assyrian colony

# KAPADOKIAN WARE

