

# Chronological Table

All dates in this table are approximate. In the earlier periods, shifts of up to *c.* 100 years are possible, in the later periods (starting with the Late Bronze Age), up to *c.* 50 years.

Pre-Pottery Neolithic Period	8000–6000 BC
Pottery Neolithic Period	6000–4500 BC
Chalcolithic Period	4500–3300 BC
Early Bronze Age I (a–b)	3300–2900 BC
Early Bronze Age II	2900–2700 BC
Early Bronze Age IIIa*	2700–2400 BC
Early Bronze Age IIIb (IV)	2400–2200 BC
Intermediate Early Bronze-Middle Bronze Age (Middle Bronze Age I)	2200–2000 BC
Middle Bronze Age IIa	2000–1750 BC
Middle Bronze Age IIb	1750–1600 BC
Late Bronze Age I	1600–1450 BC
Late Bronze Age IIa	1450–1300 BC
Late Bronze Age IIb	1300–1200 BC
Iron Age I	1200–1000 BC
Iron Age II	1000– 586 BC
Babylonian and Persian Periods	586– 332 BC

CORRELATION WITH EGYPT

PALESTINE MB II A

=

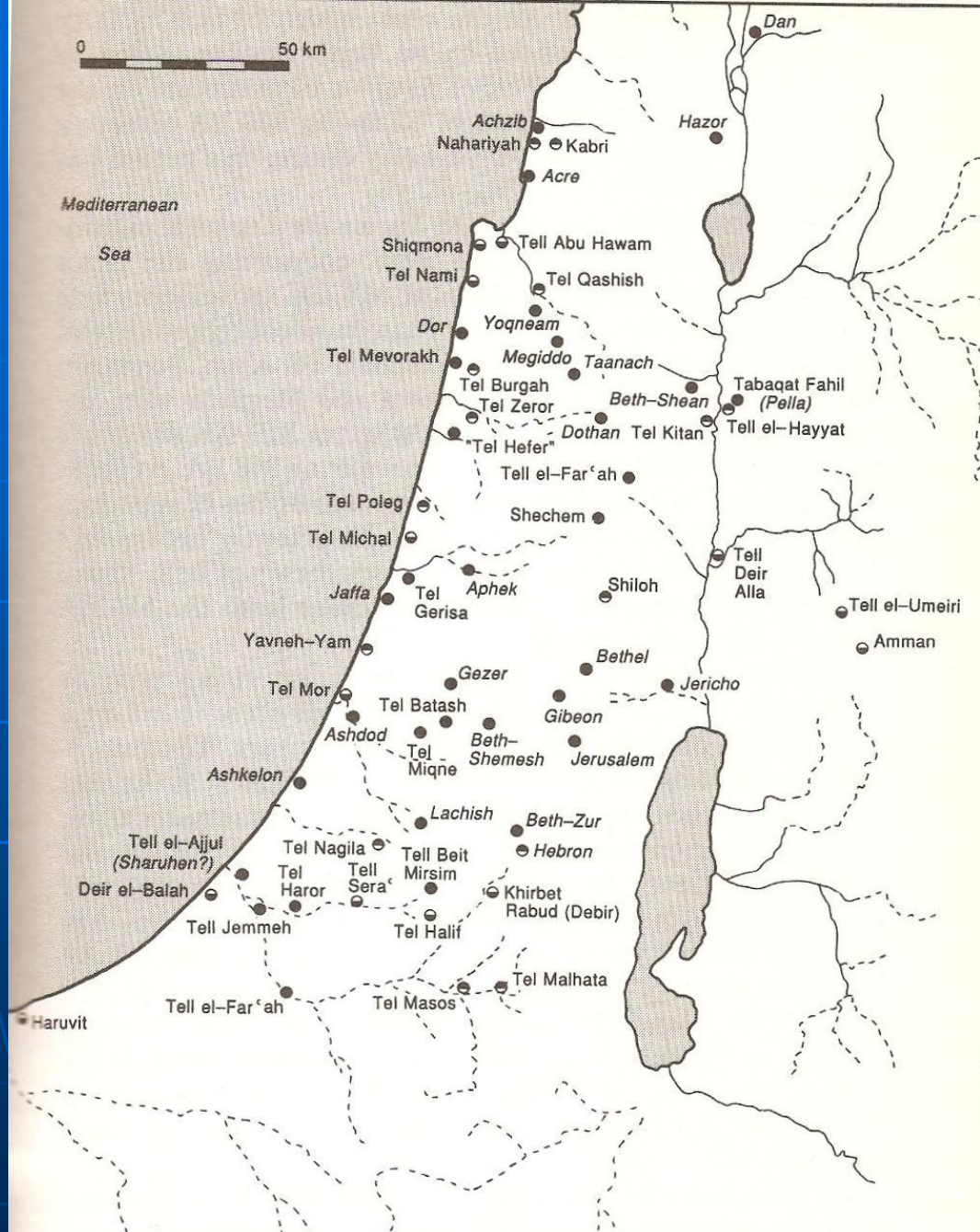
THE MIDDLE KINGDOM (XII DYN.) ca. 1991-1786

PALESTINE MB II B-C

=

THE SECOND INTERMEDIATE PERIOD  
(XIII-XV DYN.)

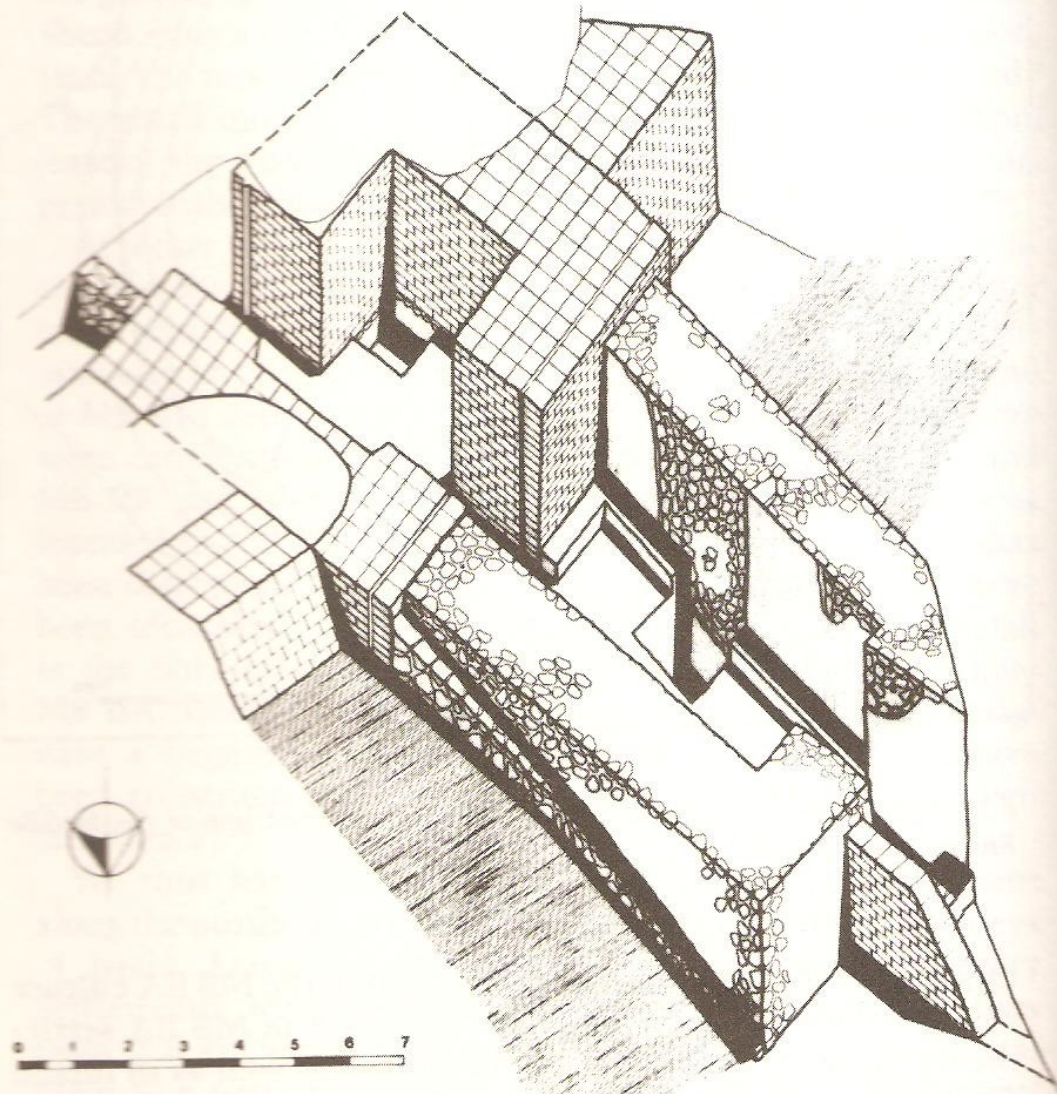
AND HYKSOS DOMINATION IN EGYPT (XV-XVII DYN.)

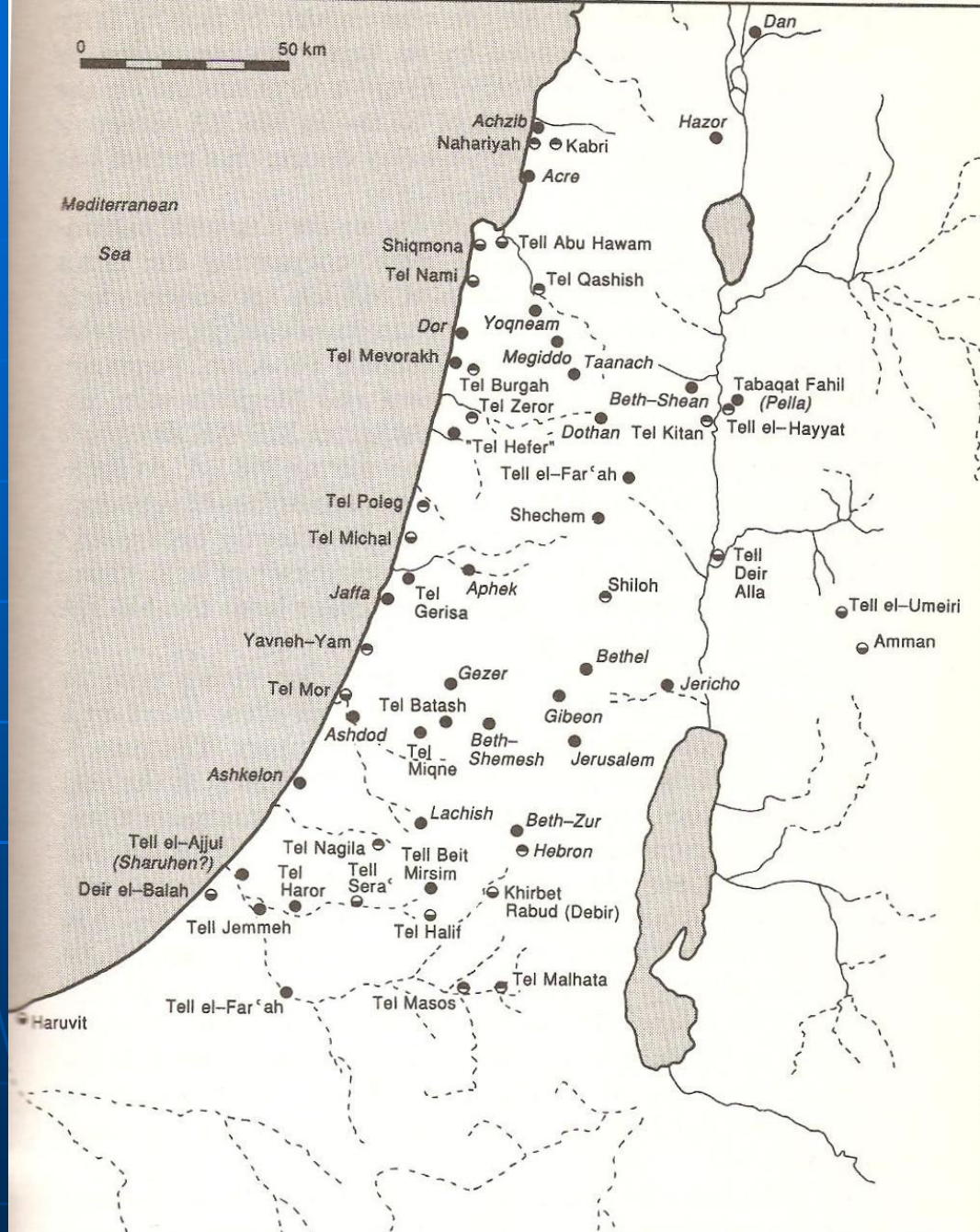


- sites occupied in both the Middle and Late Bronze ages
- sites occupied during the Middle Bronze Age only
- ◐ sites occupied during the Late Bronze Age only.



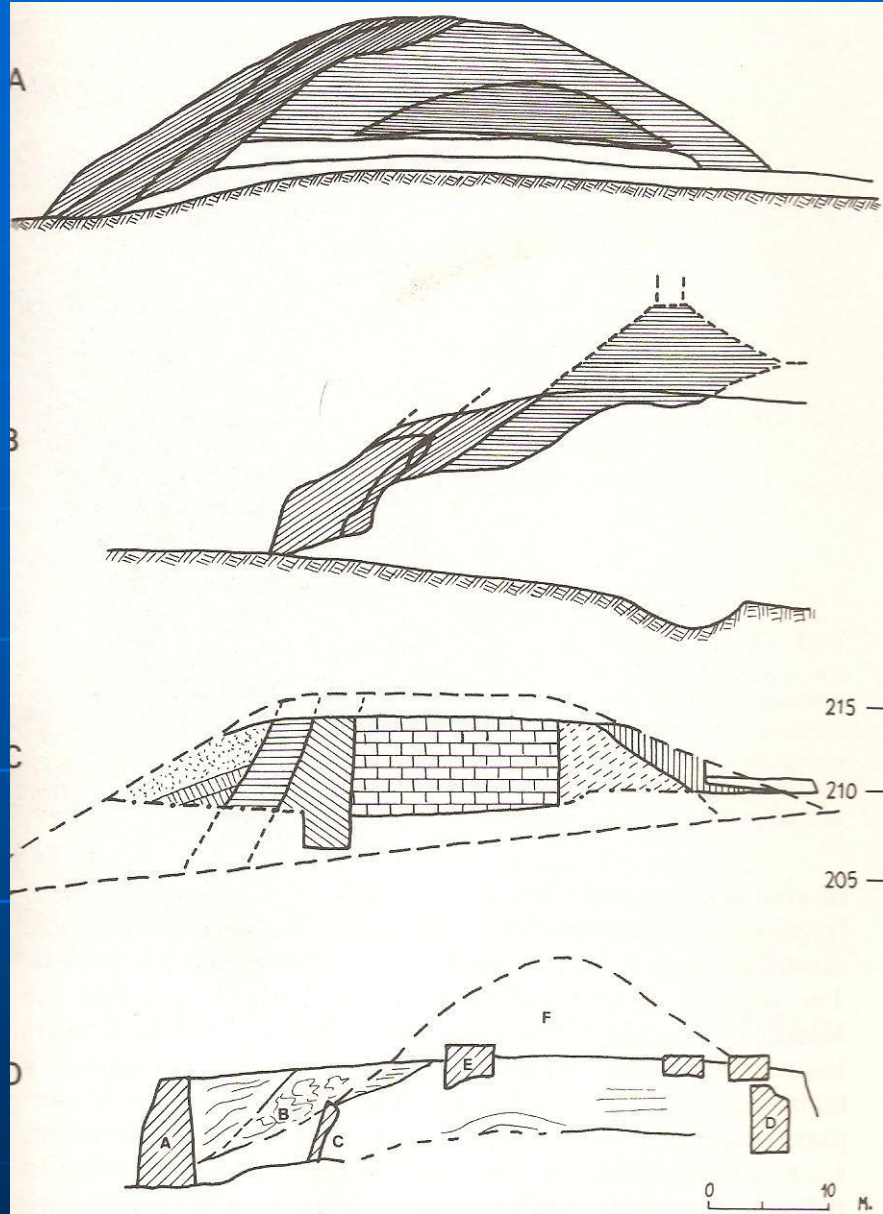
6.3 Acre: Middle Bronze IIA city gate and rampart.





- sites occupied in both the Middle and Late Bronze ages
- ◉ sites occupied during the Middle Bronze Age only
- sites occupied during the Late Bronze Age only.





6.9 Sections through Middle Bronze ramparts: (A) Yavneh-Yam; (B) Jericho; (C) Hazor; (D) Shechem

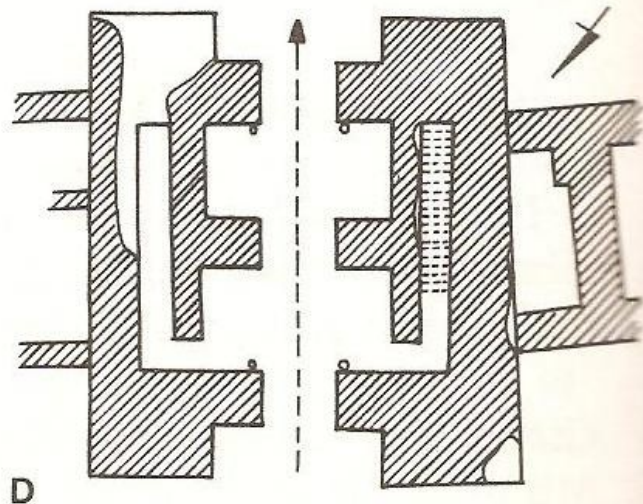
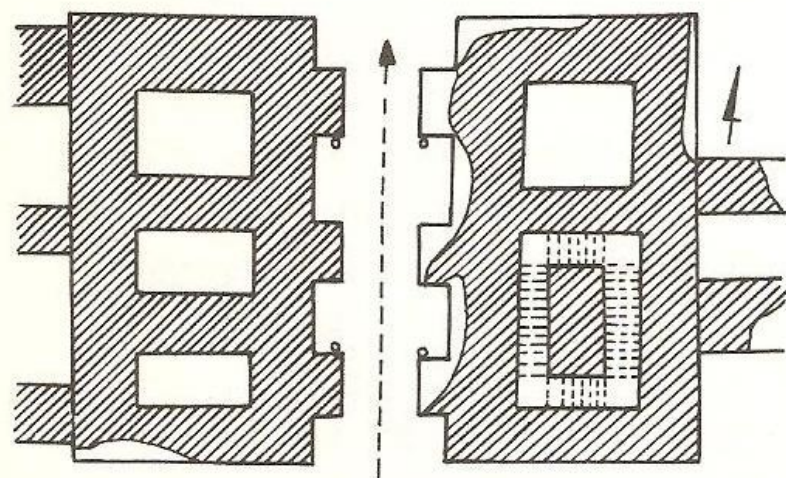
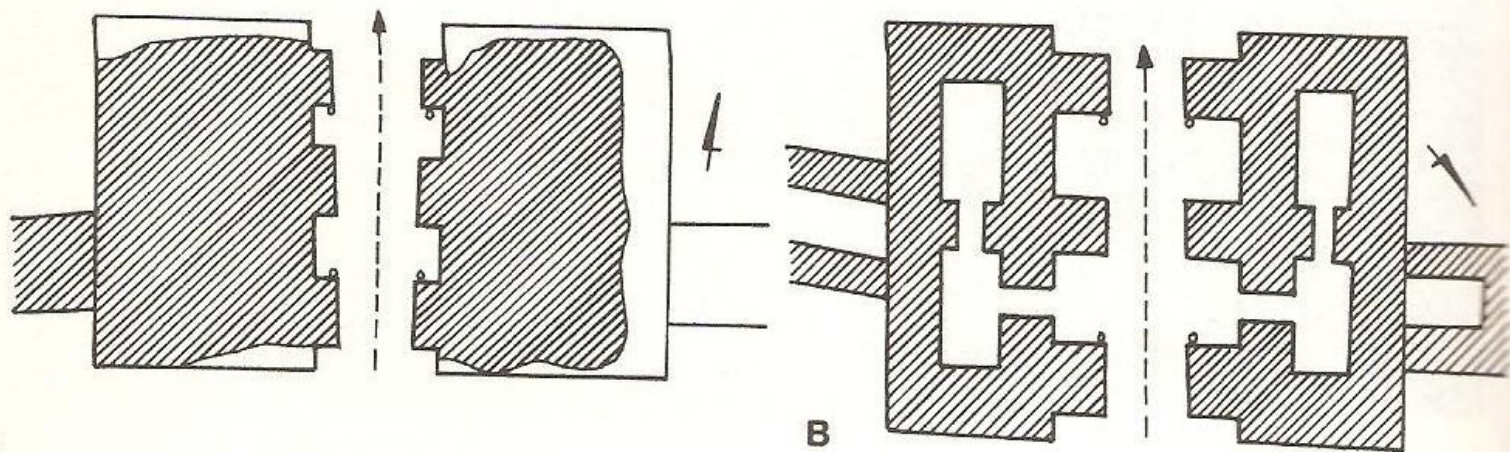
(A: retaining wall of second Middle Bronze II rampart; B: fill of second Middle Bronze II rampart; C: retaining wall of first Middle Bronze II rampart; D: inner wall; E: wall of temple; F: reconstructed contour of first rampart).



6.6 Hazor: vertical air view of the site, note the earth rampart along the edges.

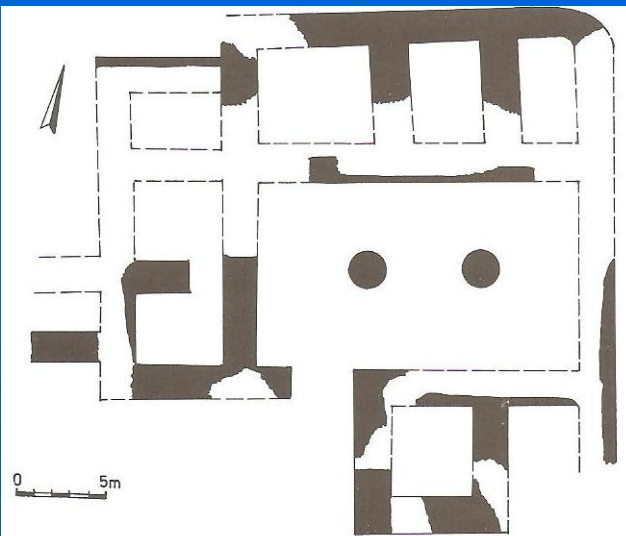


6.12 Selected plans of Middle Bronze IIB–C gates: (A) Gezer; (B) Hazor; (C) Yavneh-Yam; (D) Shechem.

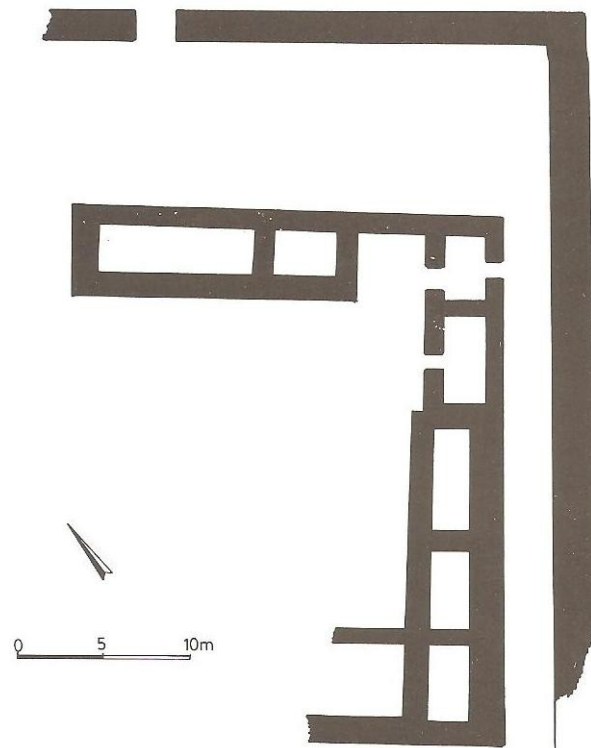


0 10 M.

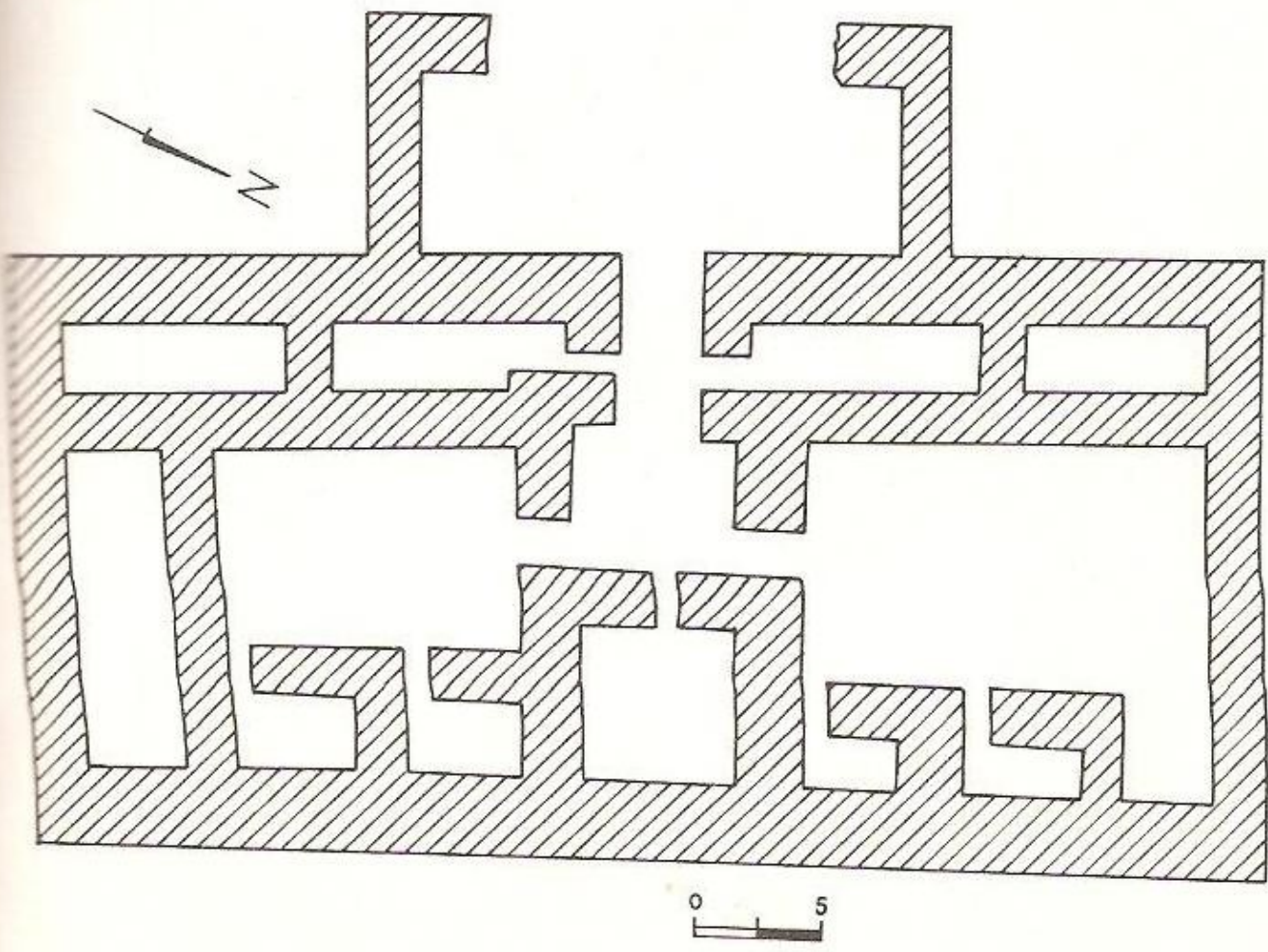




8. Palace, Tel Aphek. plan by M. Kochavi, Aphek excavations.



9. Palace, Tell el-Balata (Shechem). *Shechem*, Fig. 64.



6.14 Middle Bronze IIB-C palace at Hazor (Stratum XVI); reconstructed plan.



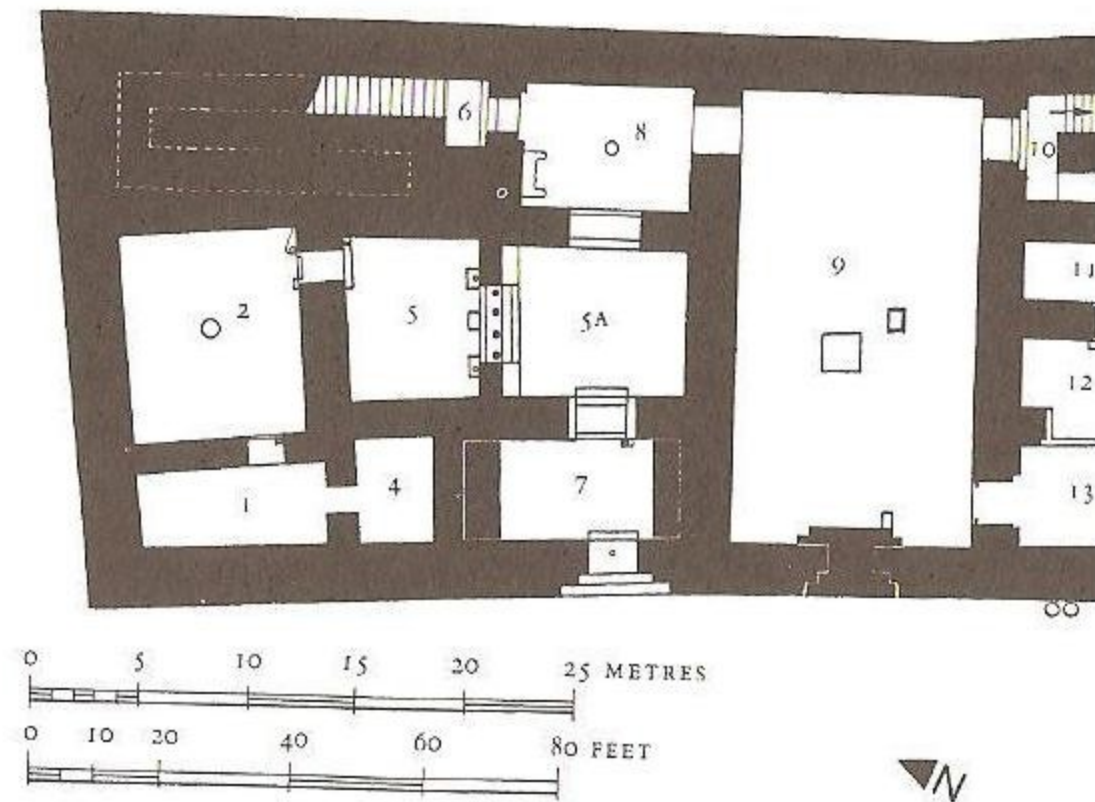
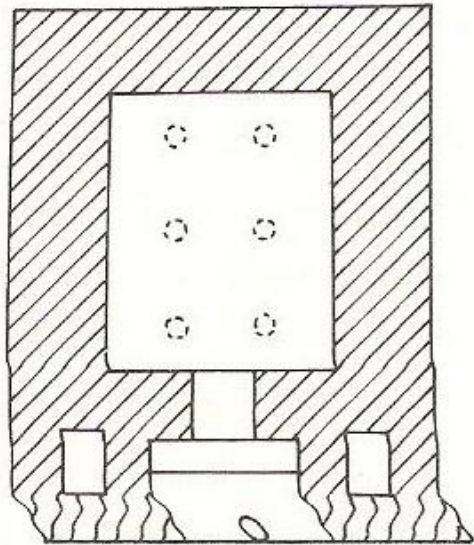
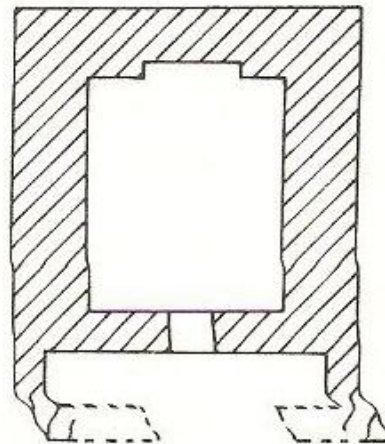


Fig. 9.11 Alalakh level VII palace.

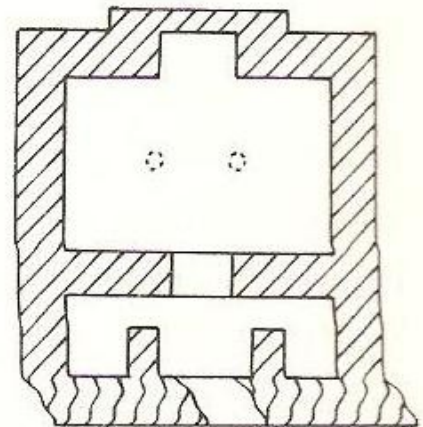
6.16 Plans of Middle Bronze Age temples: (A) Shechem; (B) Megiddo; (C) Hazor, Area H.



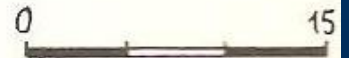
A



B

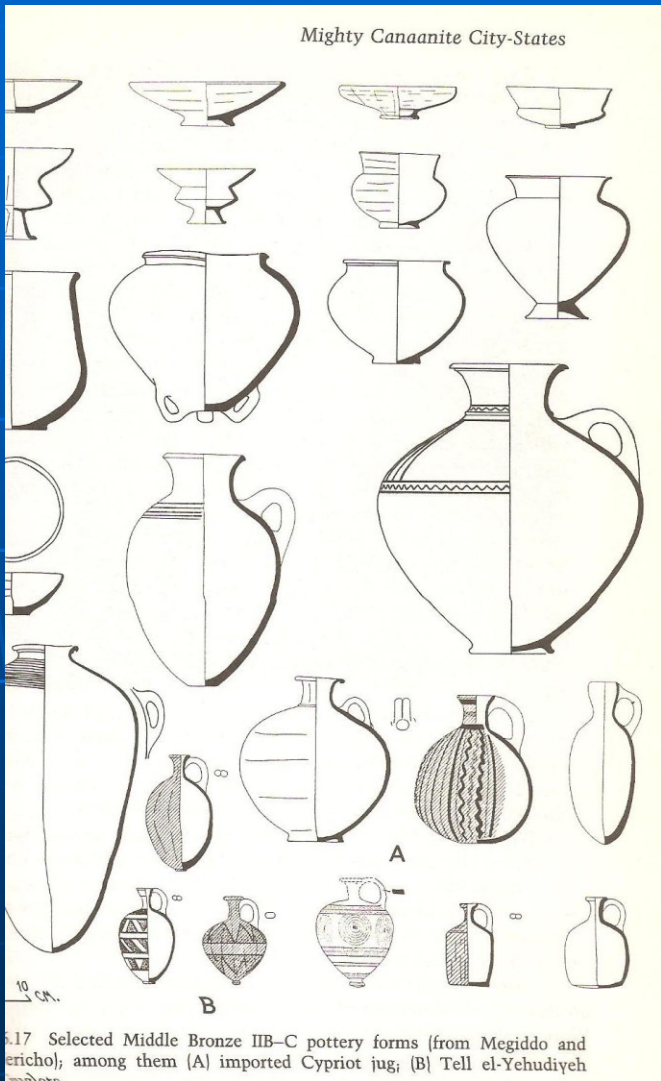
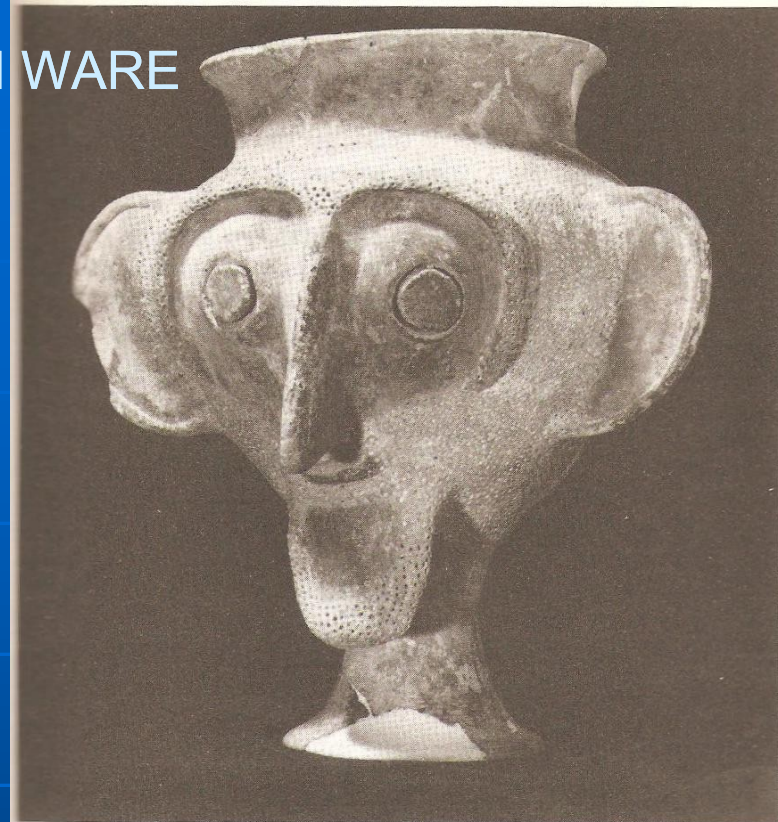


C



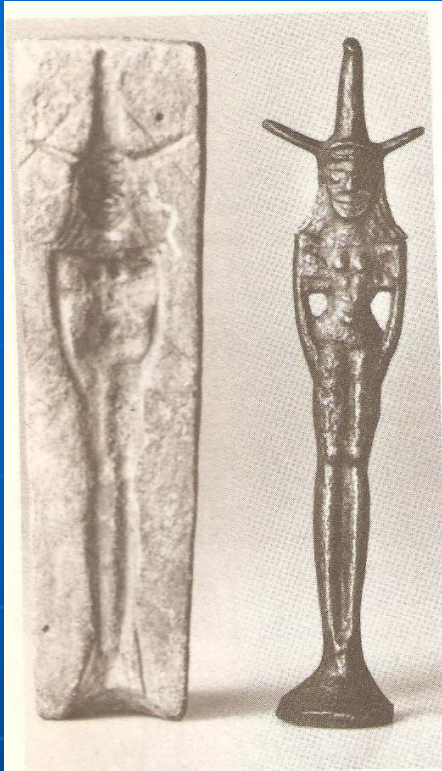


# TELL EL-YHUDIYEH WARE (right)



5.17 Selected Middle Bronze IIB-C pottery forms (from Megiddo and Jericho); among them (A) imported Cypriot jug; (B) Tell el-Yehudiye





6.20 Left: a stone mold for casting bronze figurines, found at the temple at Nahariyah. Right: a modern cast made into this mold, showing a naked horned goddess.



6.21 Sheet-gold female figurines from Gezer, sixteenth century B.C.E. (the right figurine is 16 cm high).