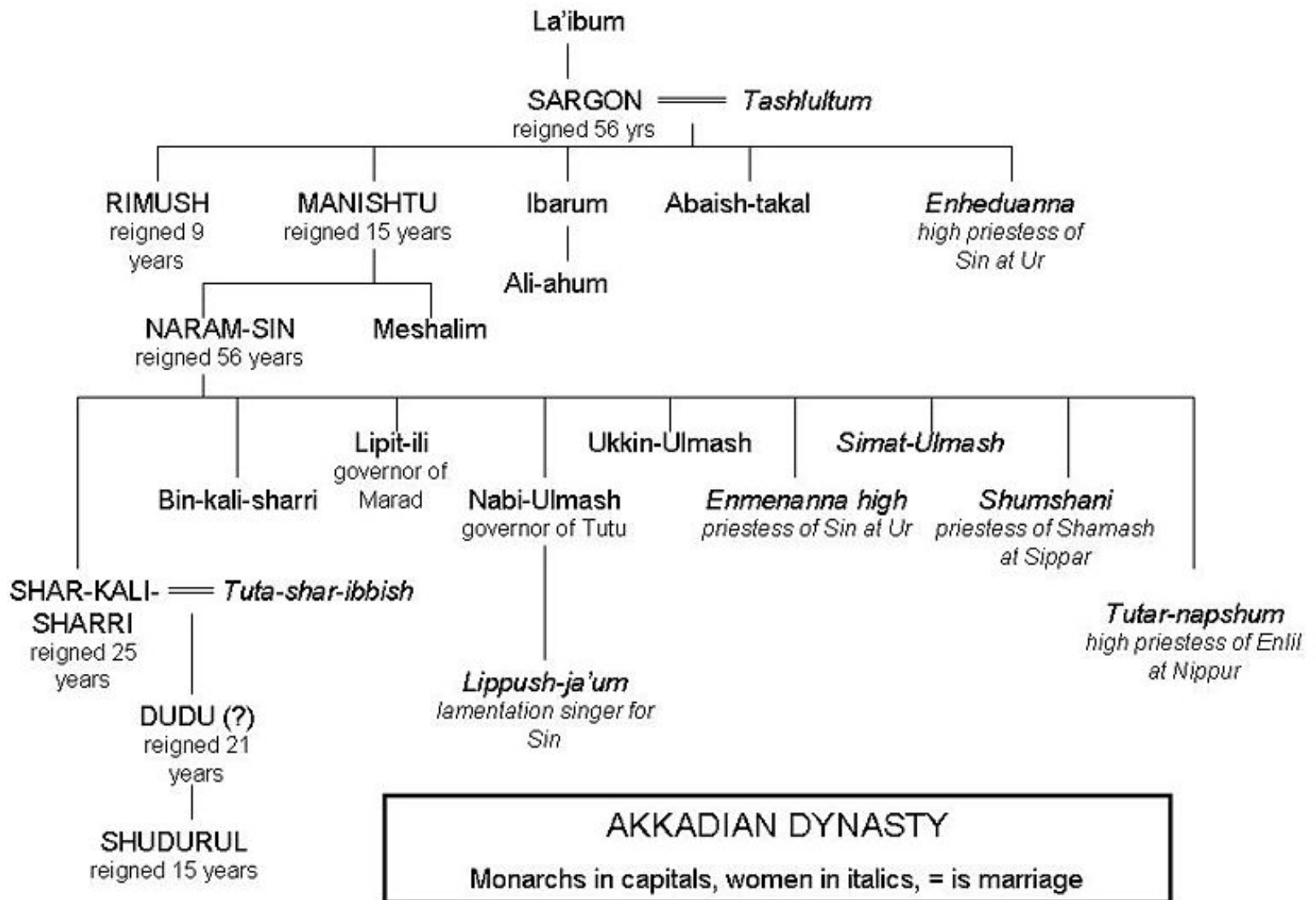
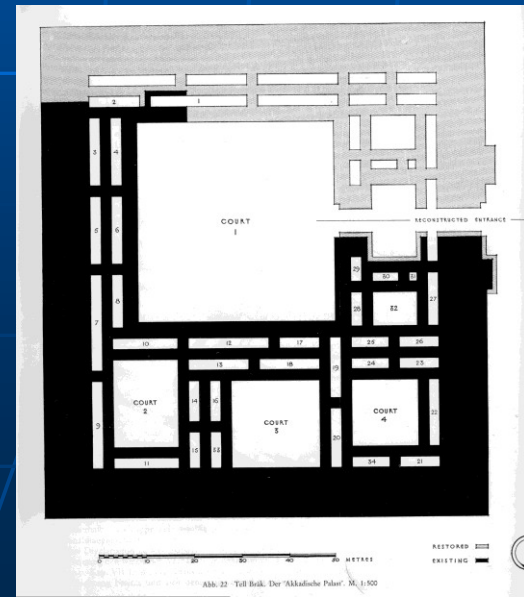
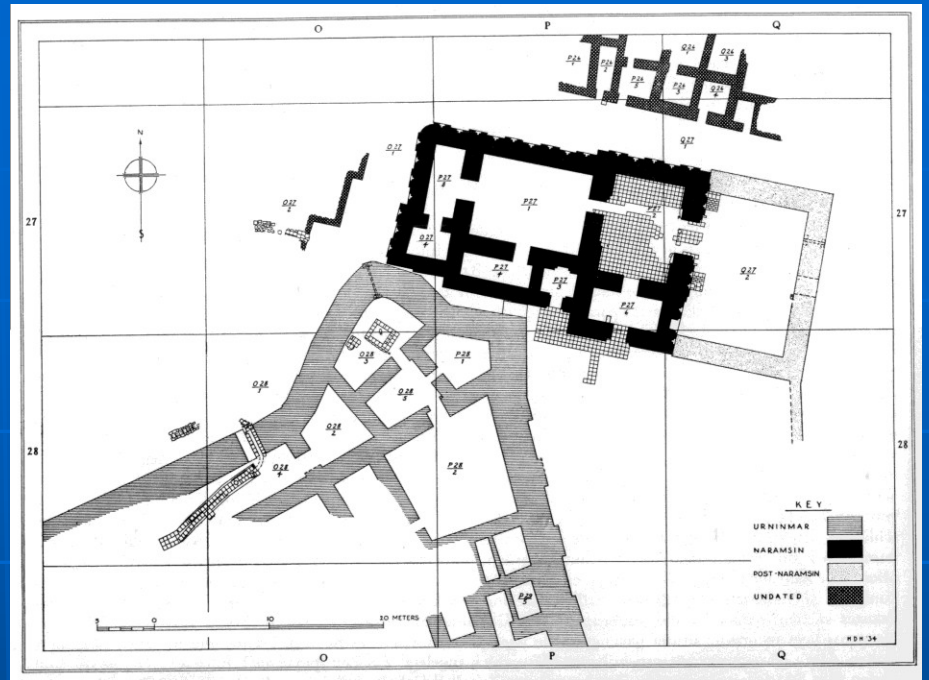
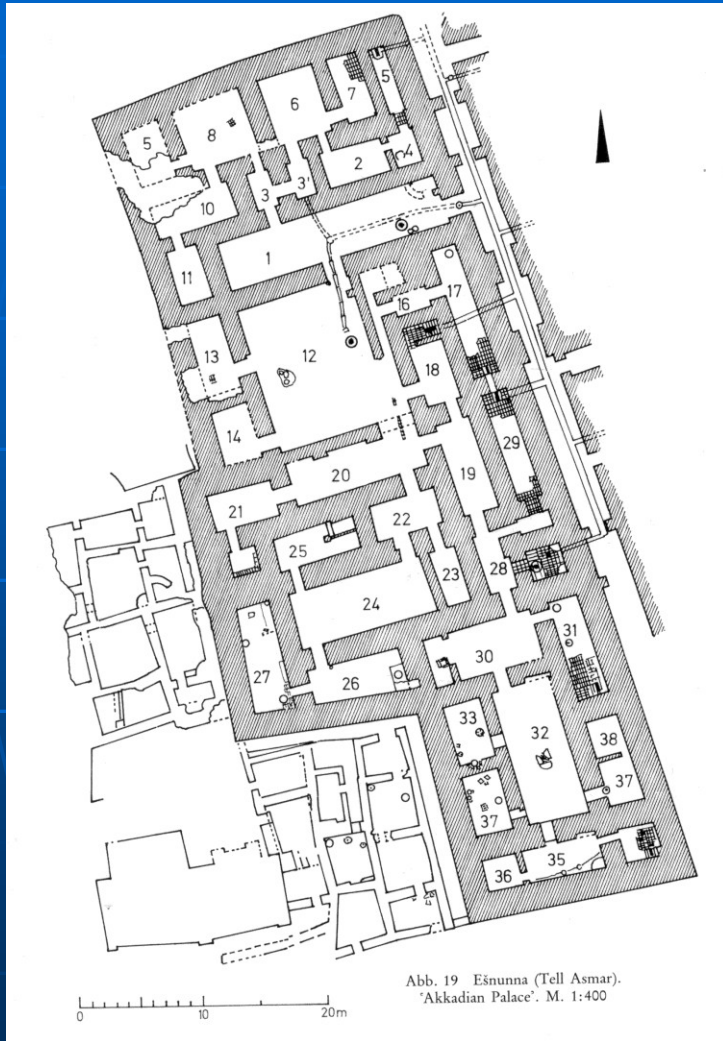


THE AKKADIAN EMPIRE ca. 2340 – 2159 BC







43. Man-istūša, aus Susa (Šuš), Iran, altakkadisch, um 2300/2250 v. Chr.; Paris



SARGON'S STELE



fot. Szary Wilk

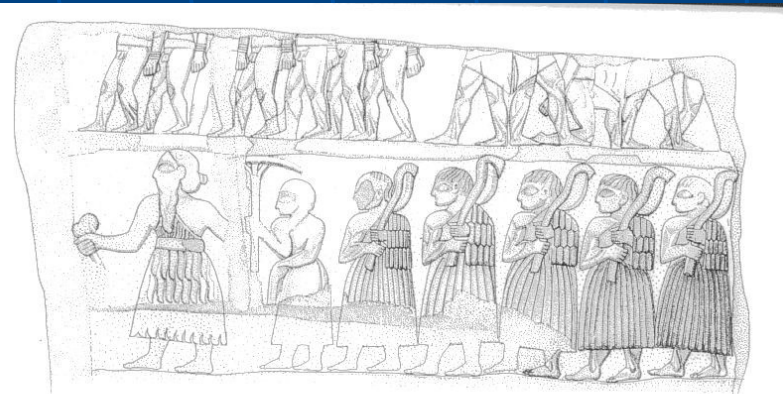


Fig. 528 Susa: stele di Sargon, Parigi Museo del Louvre Sb.1 (b. 91), diorite (Börker-Klähn, 18d).

NARAMSIN'S STELE



ROCK RELIEFS

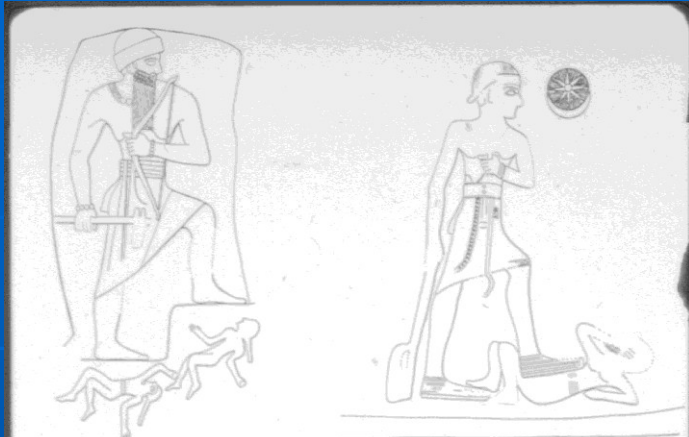


Fig. 5 Sketch of the Darband-i Gawr Relief.

Fig. 6 Sketch of Sar-i Pul-i Zohab Relief I.

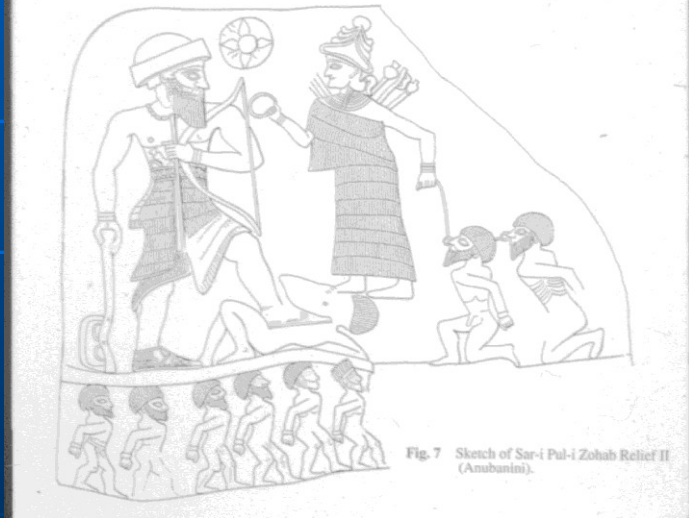
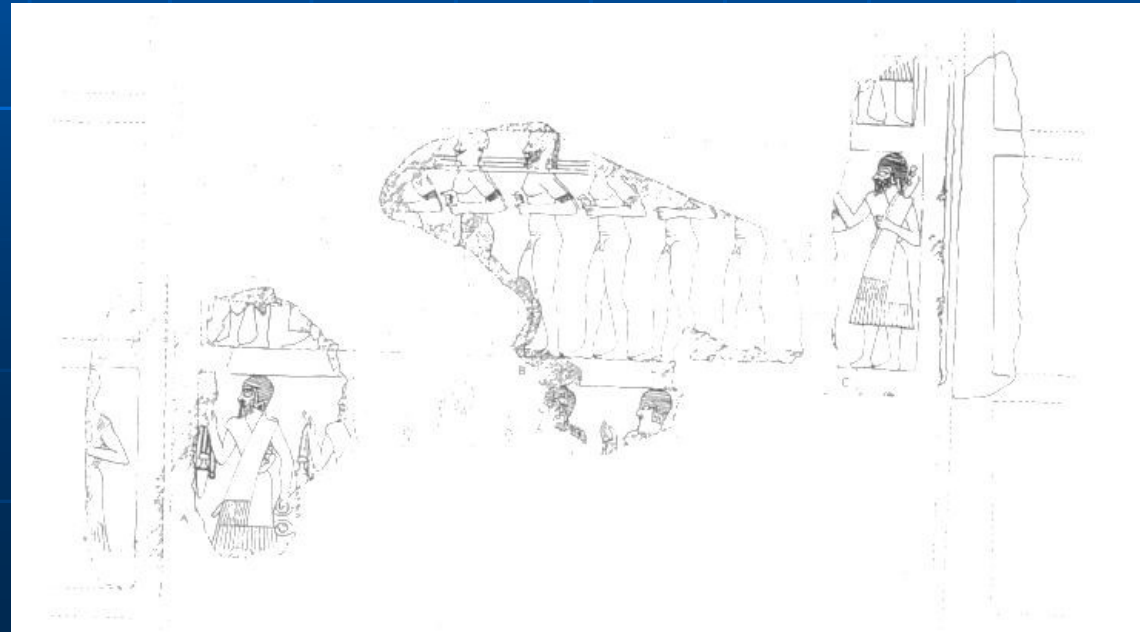
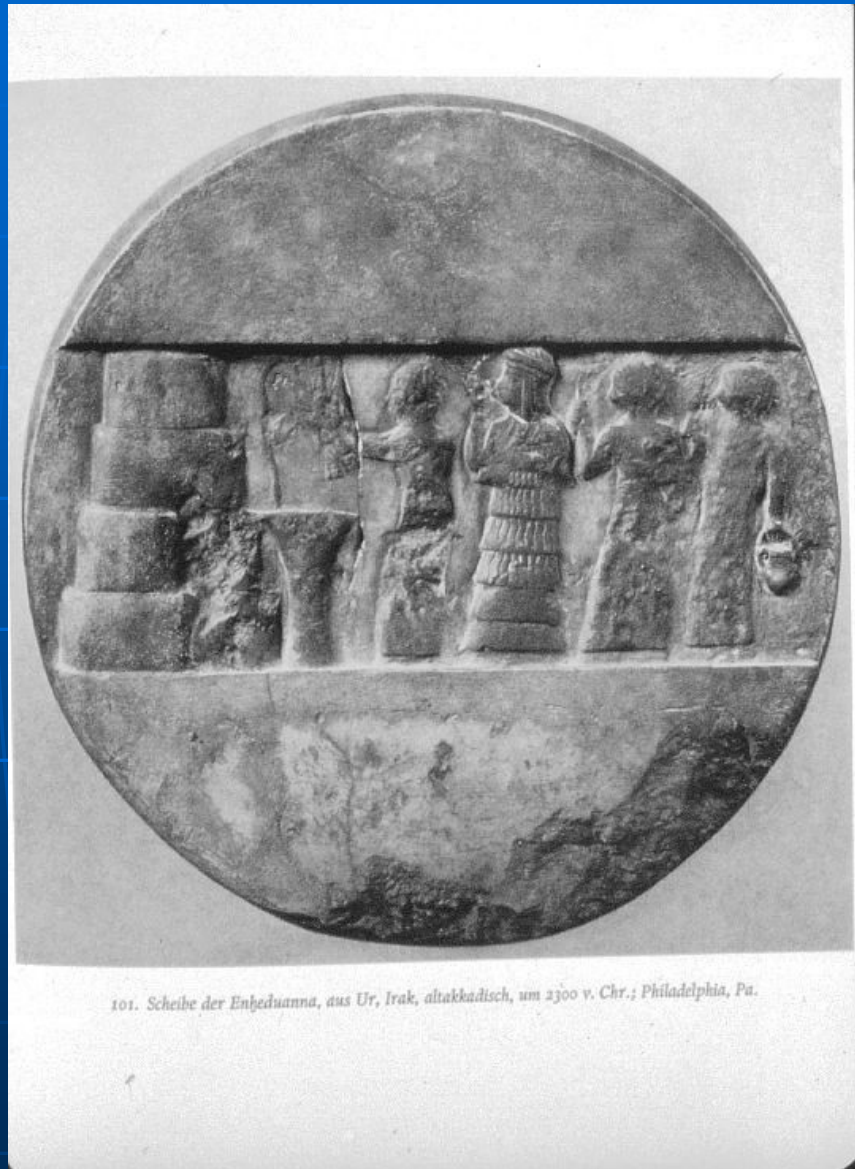


Fig. 7 Sketch of Sar-i Pul-i Zohab Relief II (Anabantini).



ENHEDUANNA'S DISC



101. Scheibe der Enheduanna, aus Ur, Irak, altakkadisch, um 2300 v. Chr.; Philadelphia, Pa.

SARGON'S HEAD



METAL STATUE FROM BASSETKI





AKKADIAN SEAL IMPRESSIONS



135a-k. Rollsiegel, Akkadisch I-III, etwa 2340-2160 v. Chr.