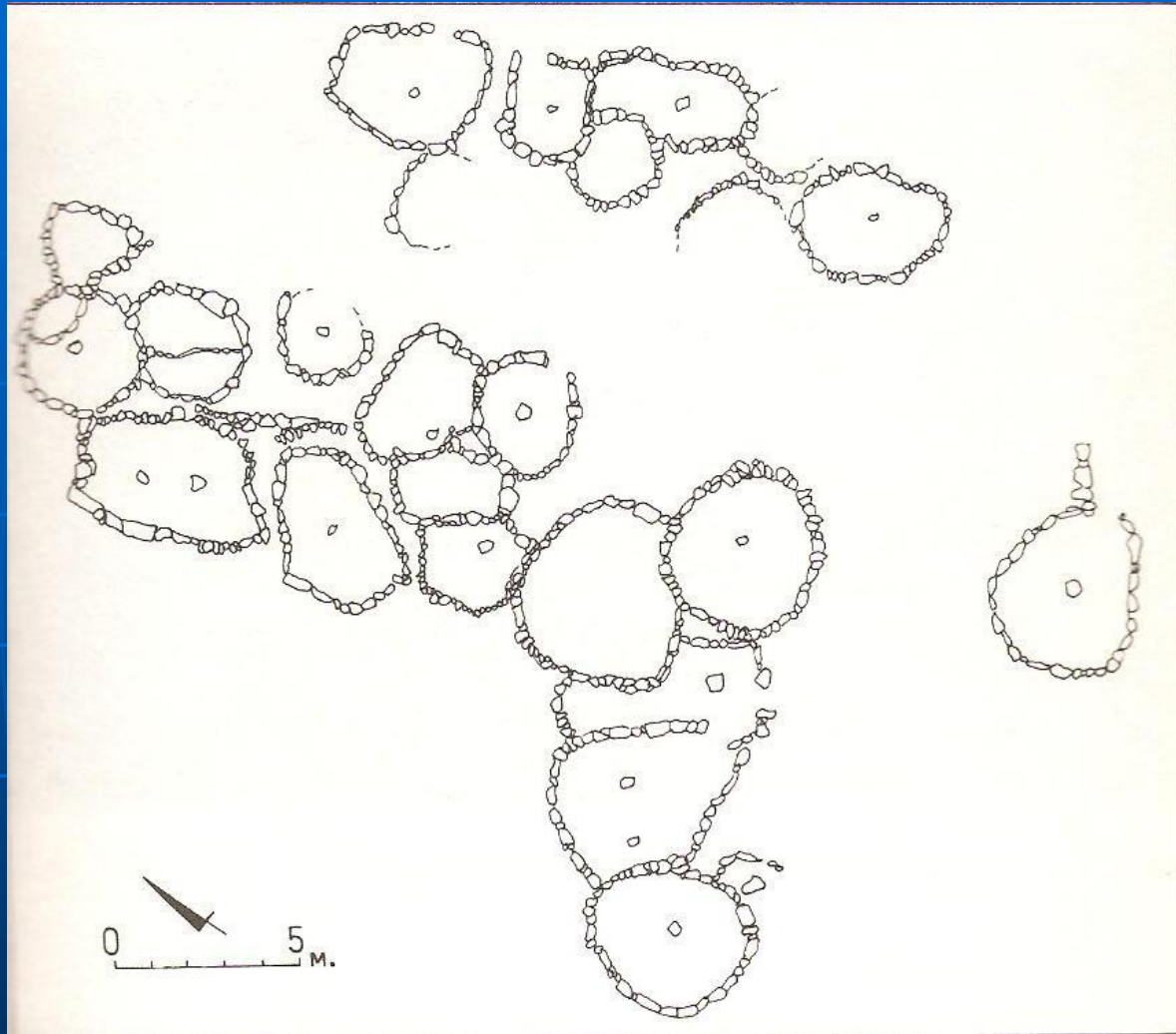


Chronological Table

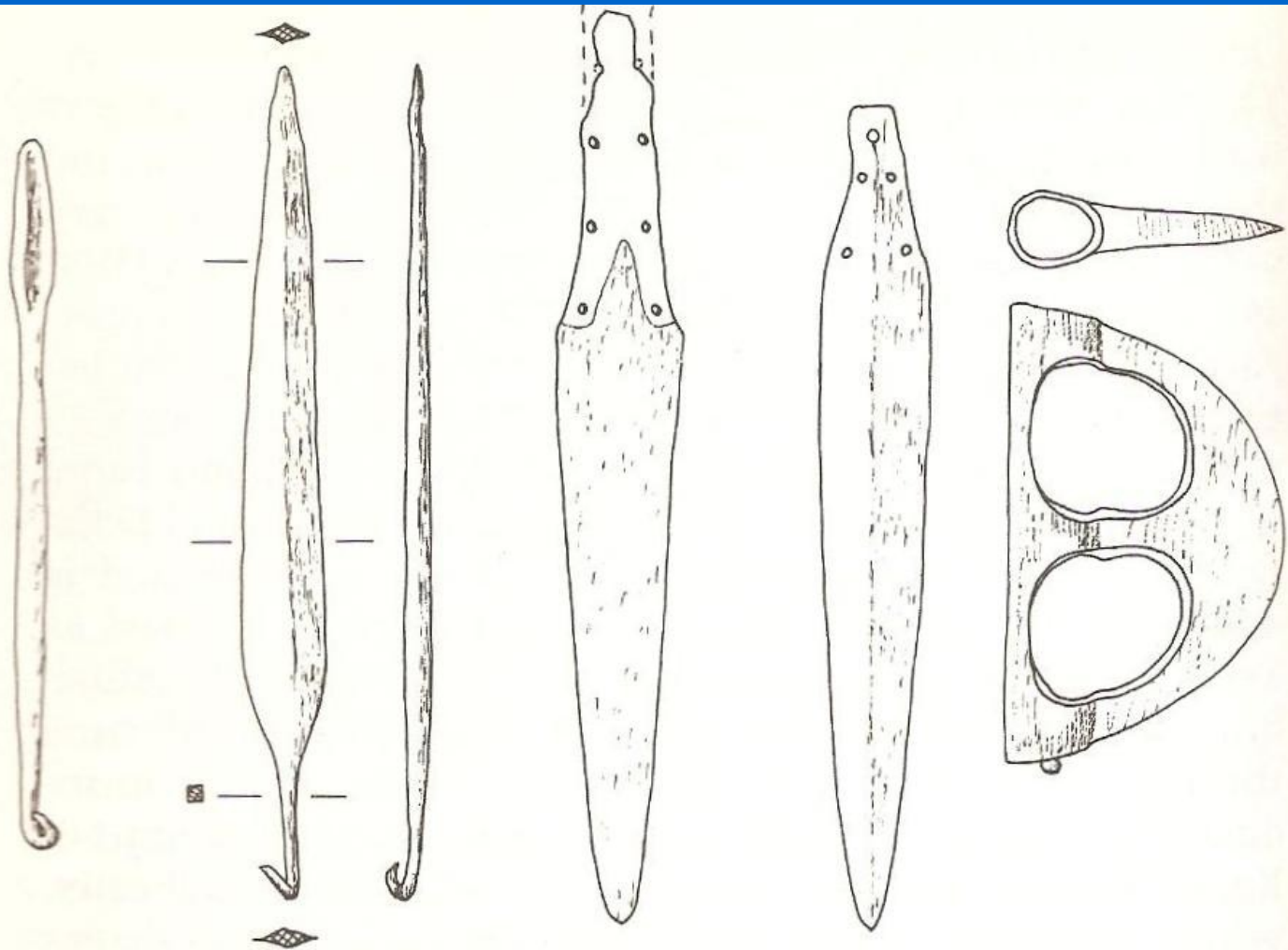
All dates in this table are approximate. In the earlier periods, shifts of up to *c.* 100 years are possible, in the later periods (starting with the Late Bronze Age), up to *c.* 50 years.

Pre-Pottery Neolithic Period	8000–6000 BC
Pottery Neolithic Period	6000–4500 BC
Chalcolithic Period	4500–3300 BC
Early Bronze Age I (a–b)	3300–2900 BC
Early Bronze Age II	2900–2700 BC
Early Bronze Age IIIa*	2700–2400 BC
Early Bronze Age IIIb (IV)	2400–2200 BC
Intermediate Early Bronze–Middle Bronze Age (Middle Bronze Age I)	2200–2000 BC
Middle Bronze Age IIa	2000–1750 BC
Middle Bronze Age IIb	1750–1600 BC
Late Bronze Age I	1600–1450 BC
Late Bronze Age IIa	1450–1300 BC
Late Bronze Age IIb	1300–1200 BC
Iron Age I	1200–1000 BC
Iron Age II	1000– 586 BC
Babylonian and Persian Periods	586– 332 BC

NEGEV SETTLEMENT



5.2 Beer Resisim: plan of a dwelling complex.



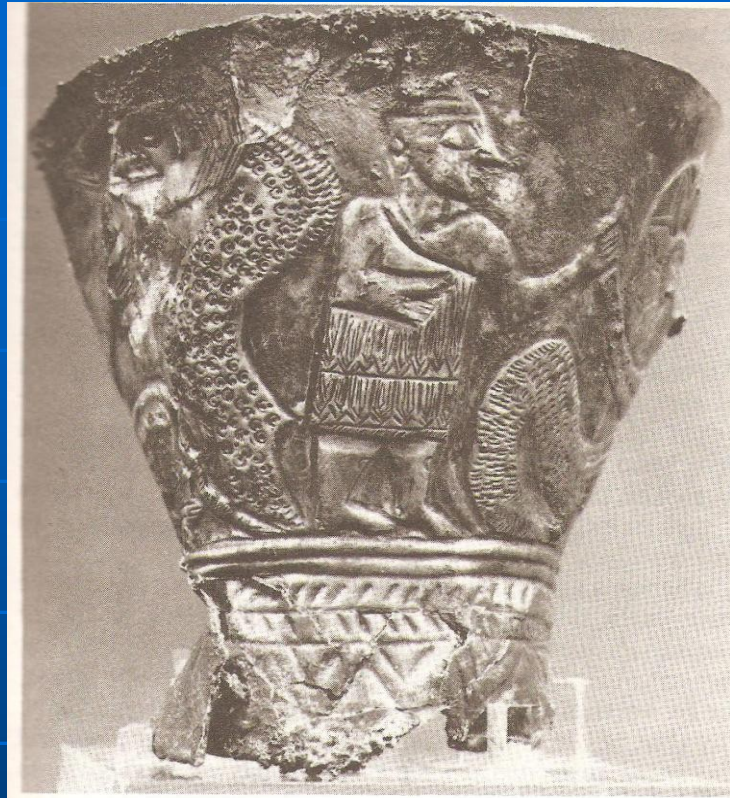
0 5 CM.

5.10 Selected weapons and a pin from EB IV/MB I tombs.

A FRESCO FROM THE EGYPTIAN TOMB IN BENI HASSAN –
TRAVELLING ASIATIC METALSMITHS (1890 BC)



'AIN SAMIYA GOBLET



5.11 The silver goblet from 'Ain Samiya.

5.12 Drawing of the scene on the 'Ain Samiya goblet.

