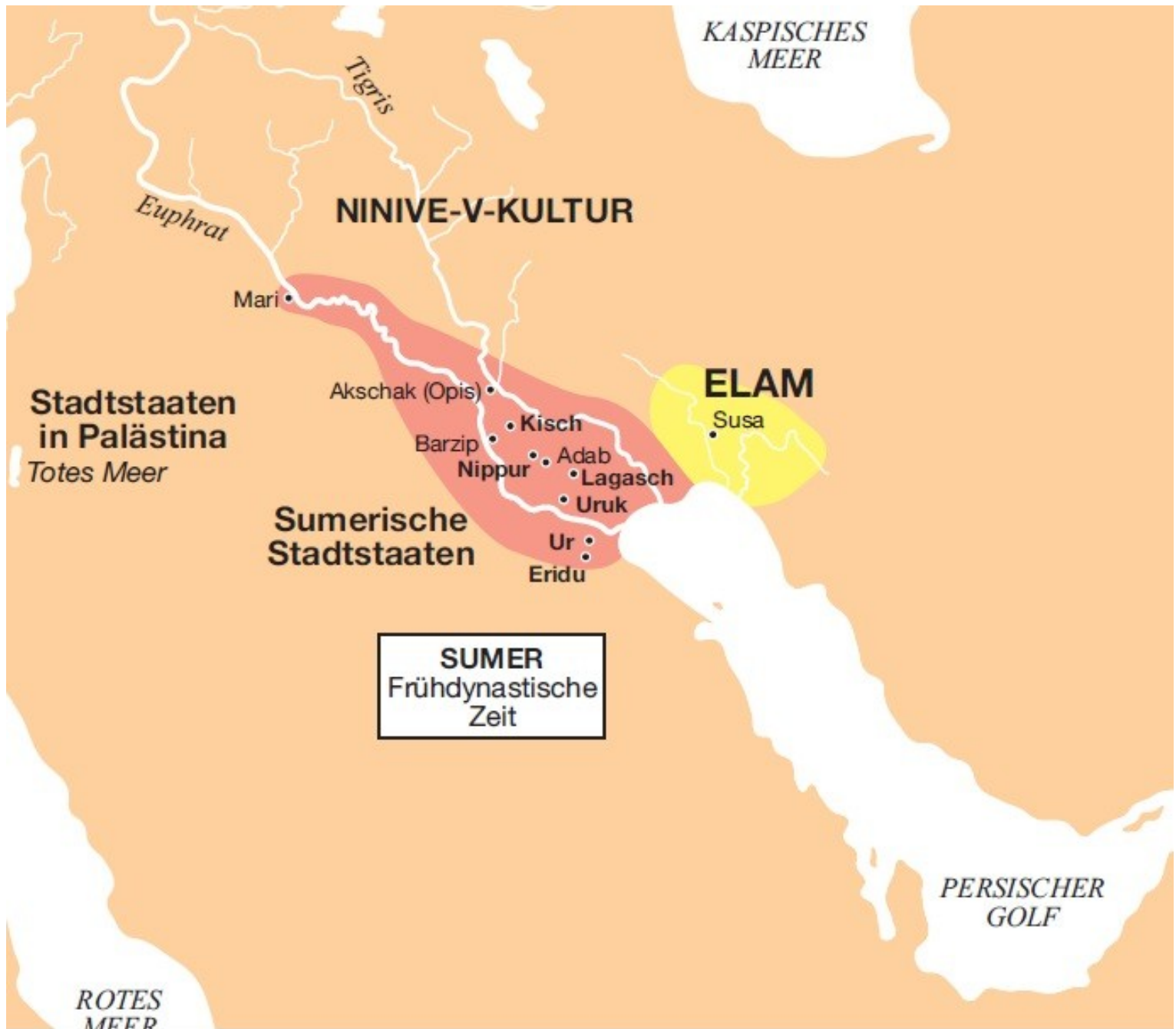


Dějiny Předního Východu - seminář

2. HODINA
RANĚ DYNASTICKÉ OBDOBÍ

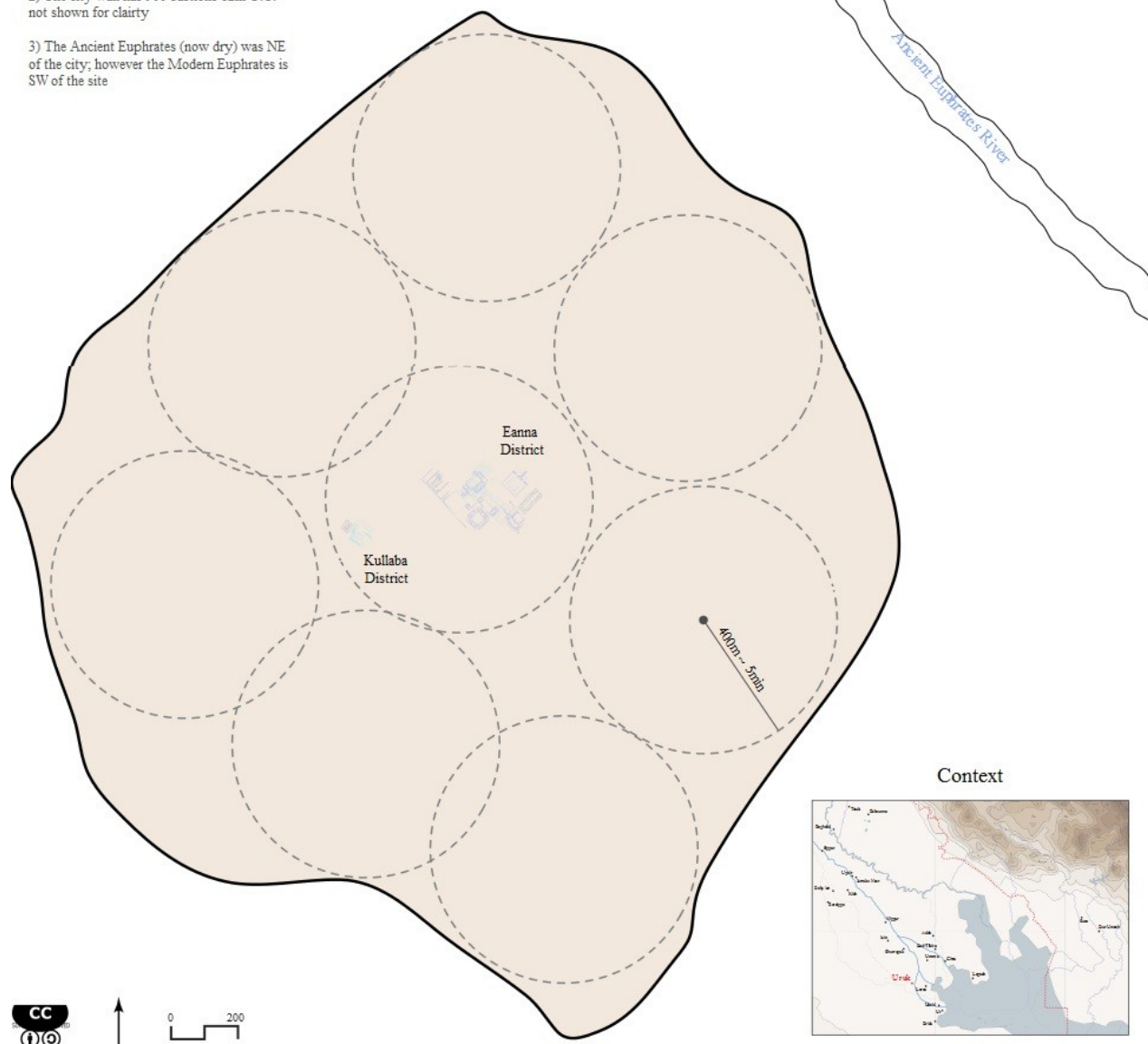


City of Uruk

Note:

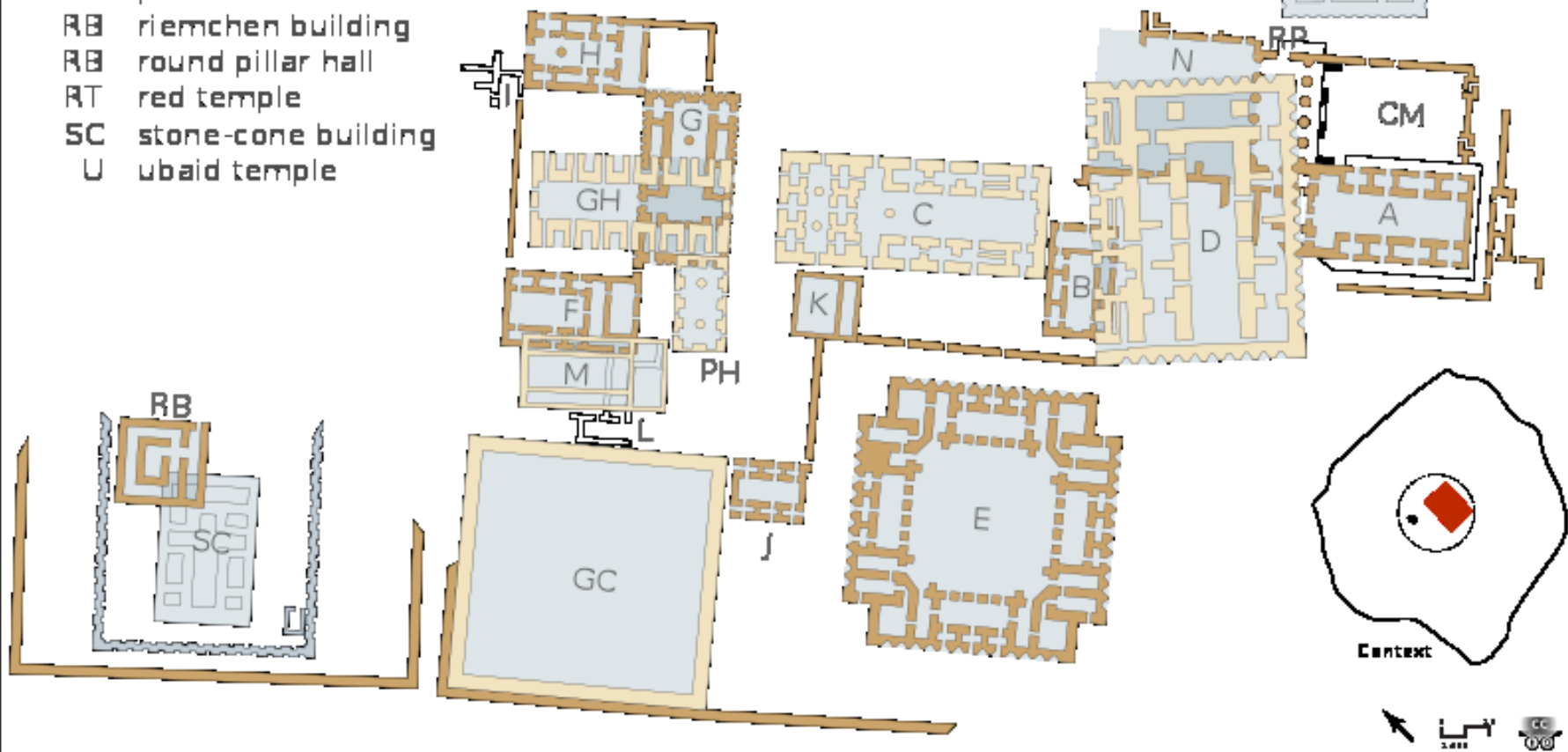
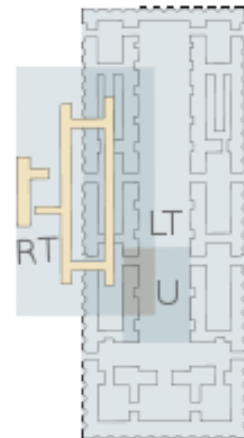
- 1) the 400m or 5 minute walk radius typically defines an urban district
- 2) The city wall has 900 bastions 12m O.C. not shown for clarity
- 3) The Ancient Euphrates (now dry) was NE of the city; however the Modern Euphrates is SW of the site

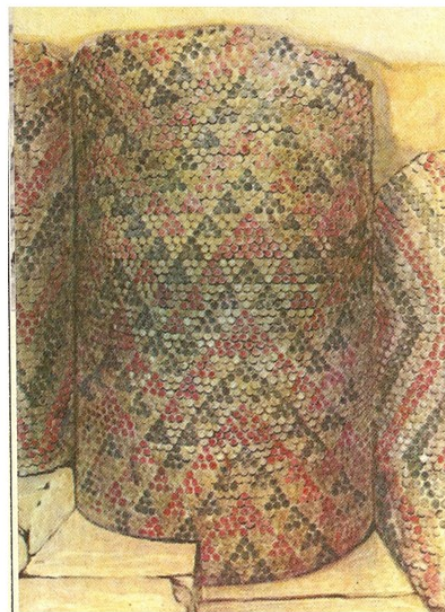
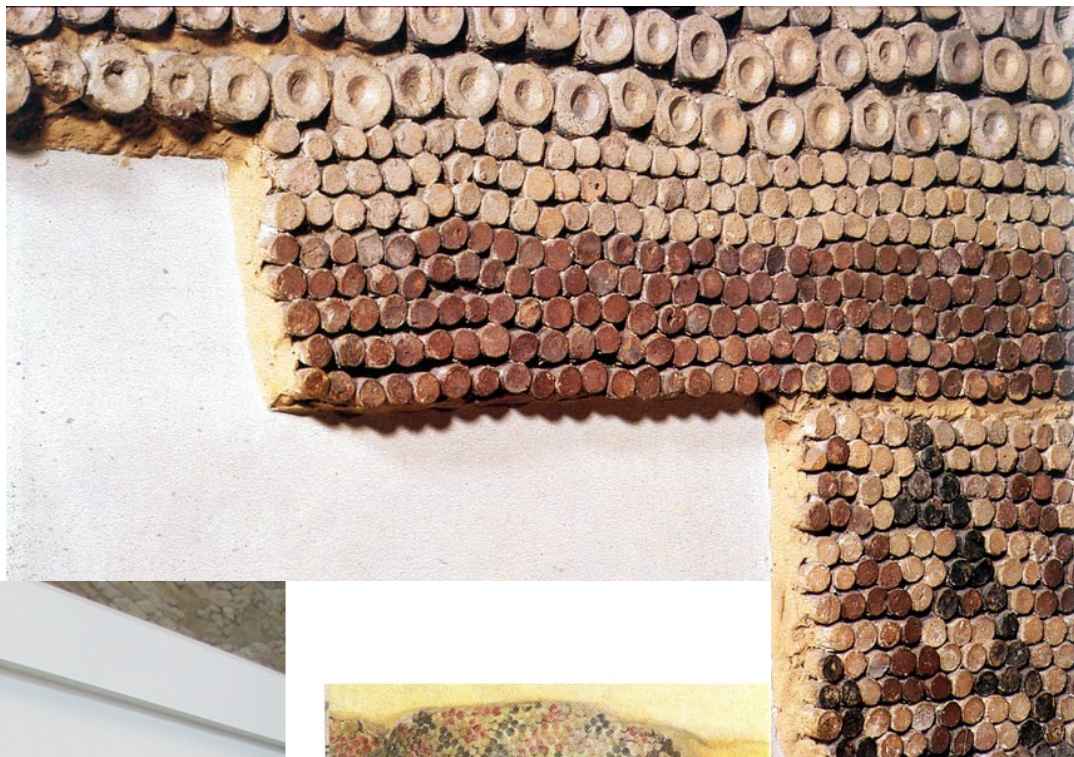
URUK



Eanna District of Uruk IV

- A-N building A - building N
- CM cone mosaic courtyard
- GC great court
- GH great hall building
- LT limestone temple
- PH pillar hall
- RB riemchen building
- RP round pillar hall
- RT red temple
- SC stone-cone building
- U ubaid temple

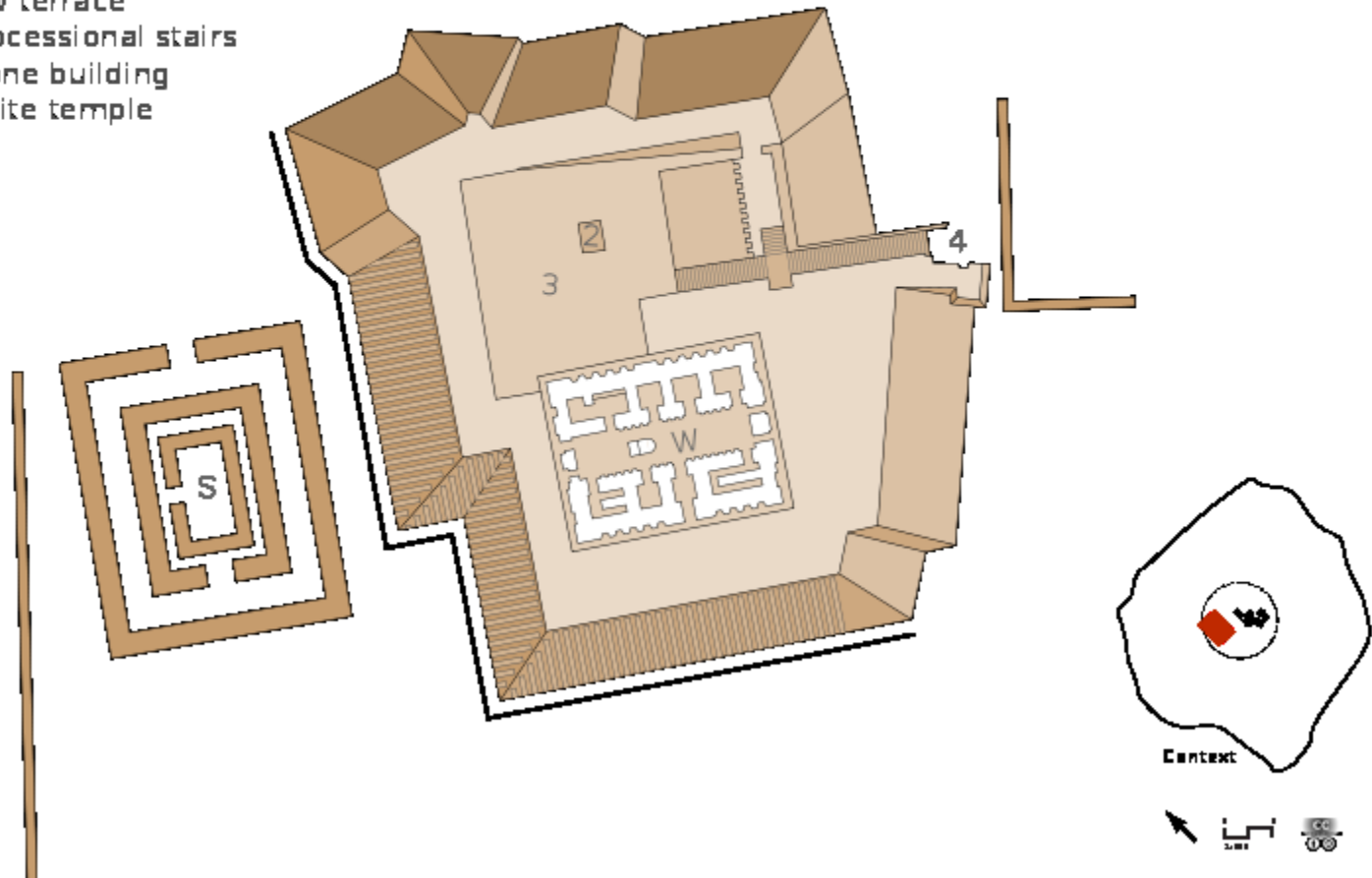


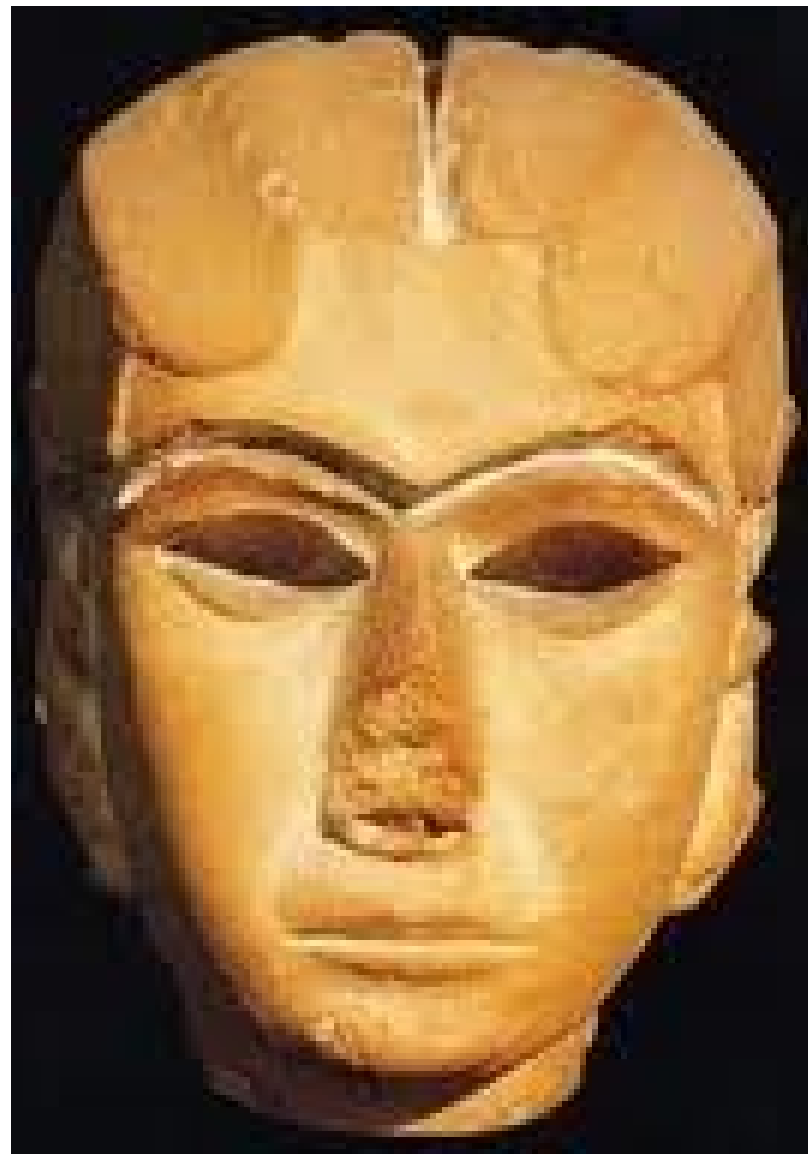
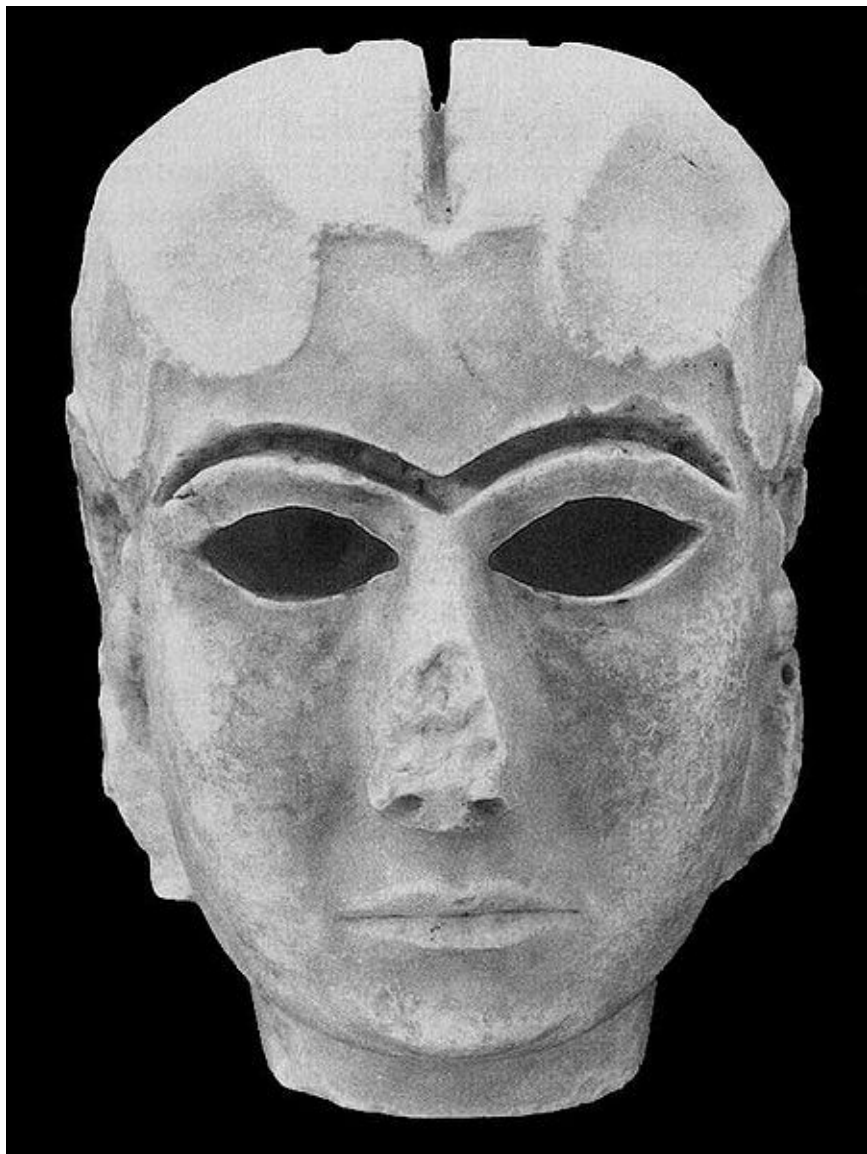


**„kuželová“
mozaika**

Anu District of Uruk III

- 1 anu ziggurat
- 2 altar
- 3 NW terrace
- 4 processional stairs
- 5 stone building
- W white temple



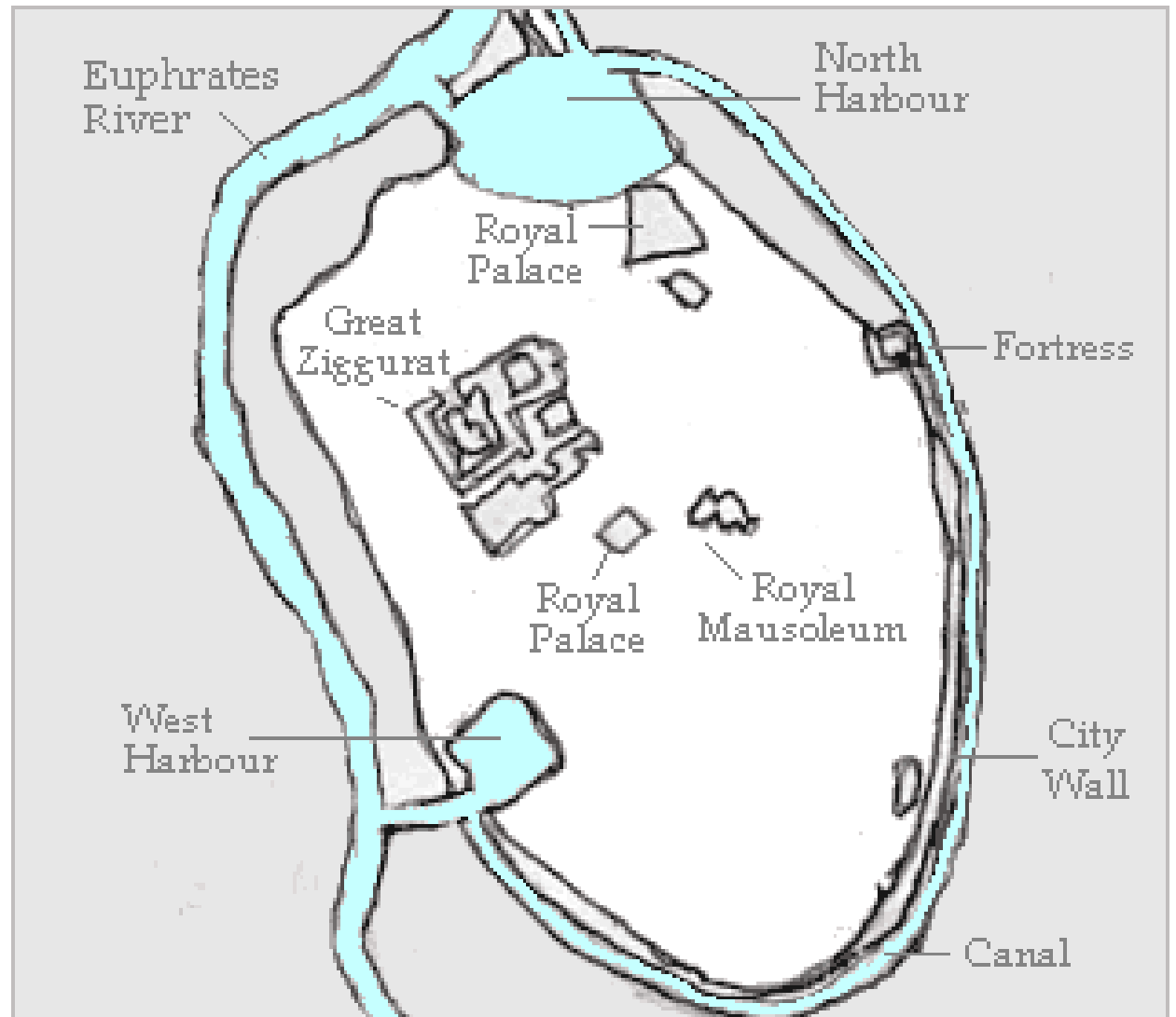


Dáma z Uruku



Gilgameš (reliéf z doby akkadské)

UR



Leonard WOOLLEY

Vykopávky v Uru

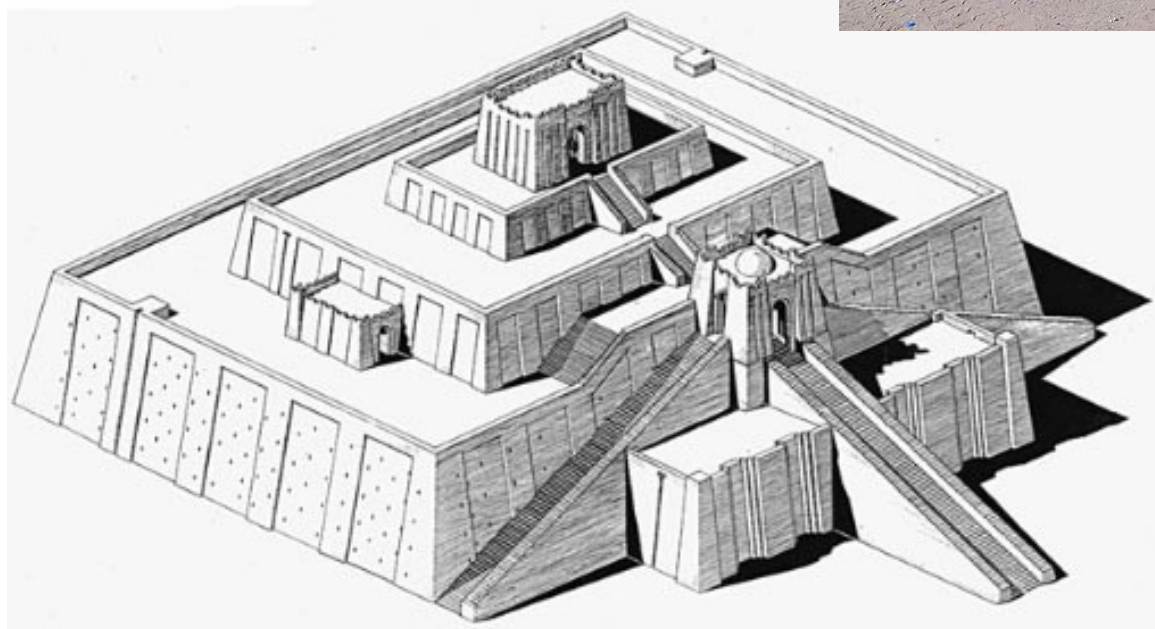


Velký zikkurat v Uru

částečně rekonstruovaná fasáda



rekonstrukce podle Woolleyho

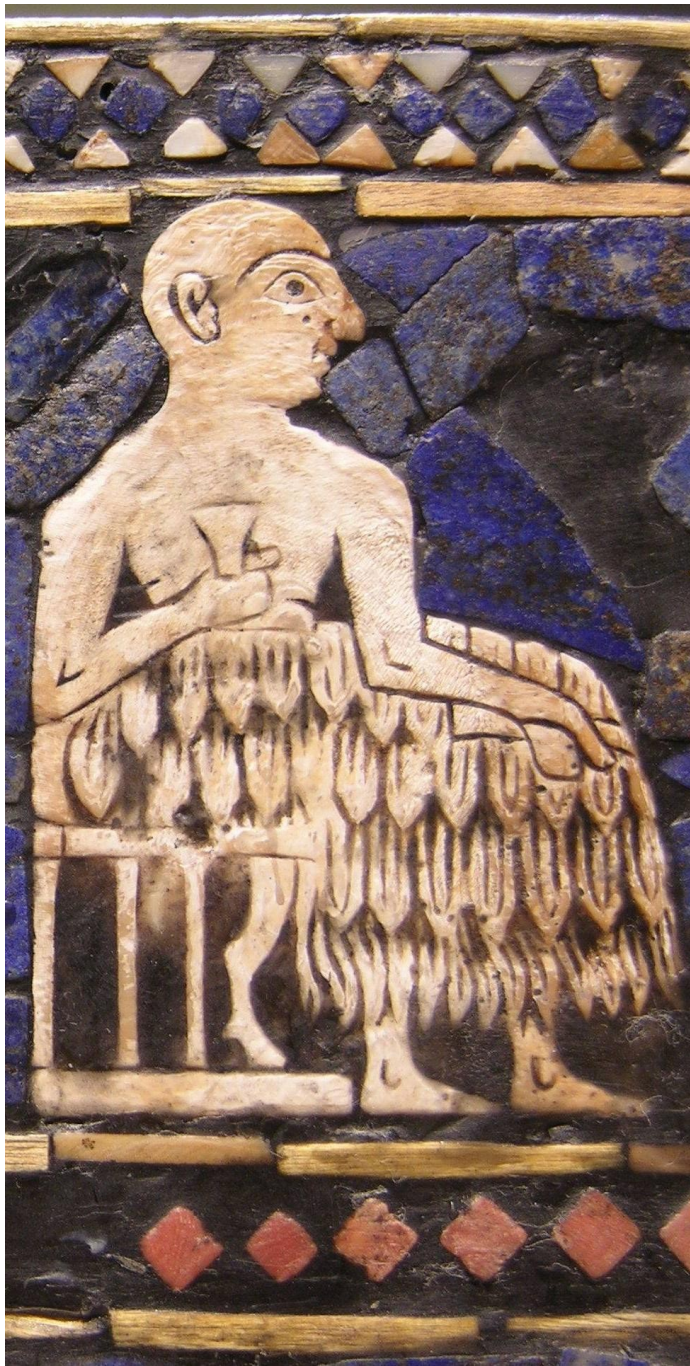


Standarta z Uru

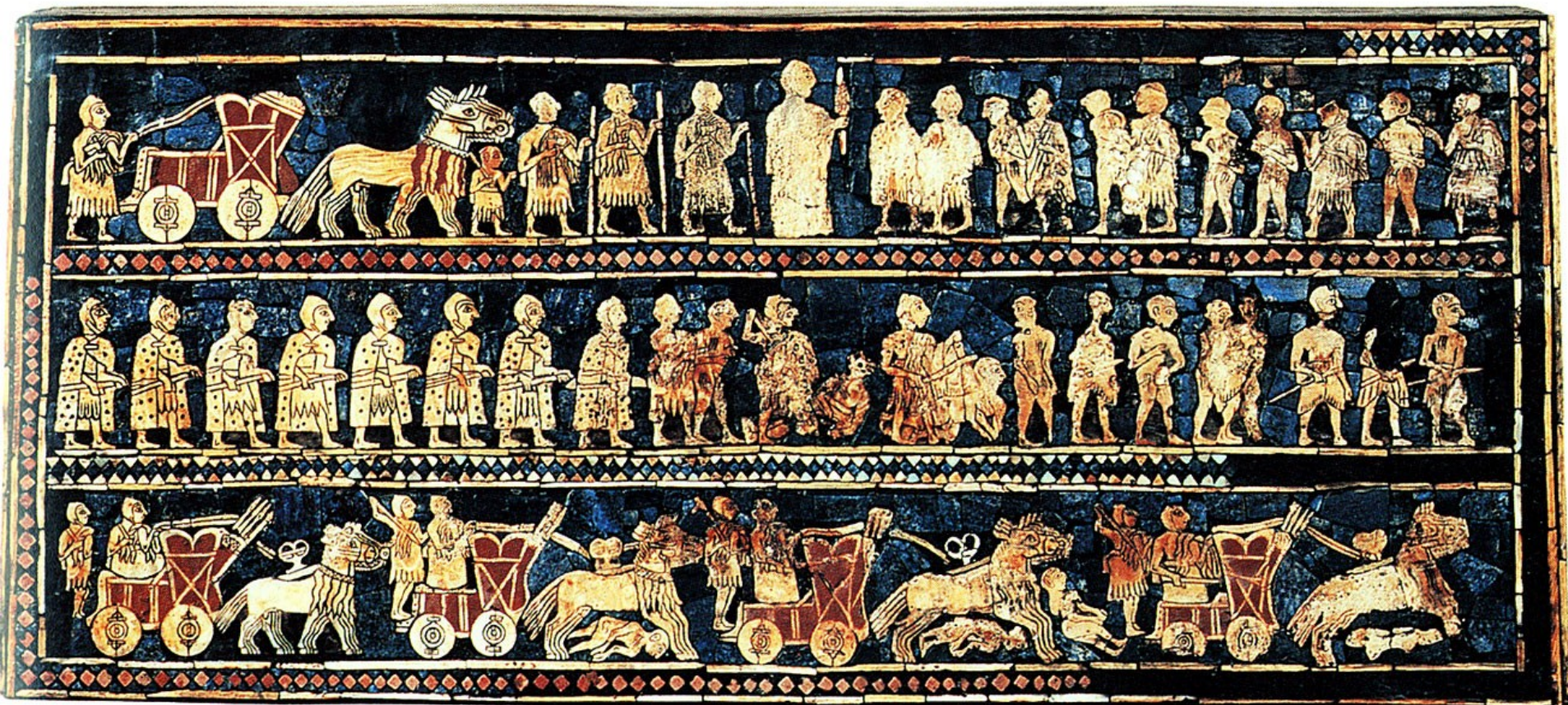


„mírový“ panel





„válečný“ panel







**výbava z hrobu
královny Puabi**

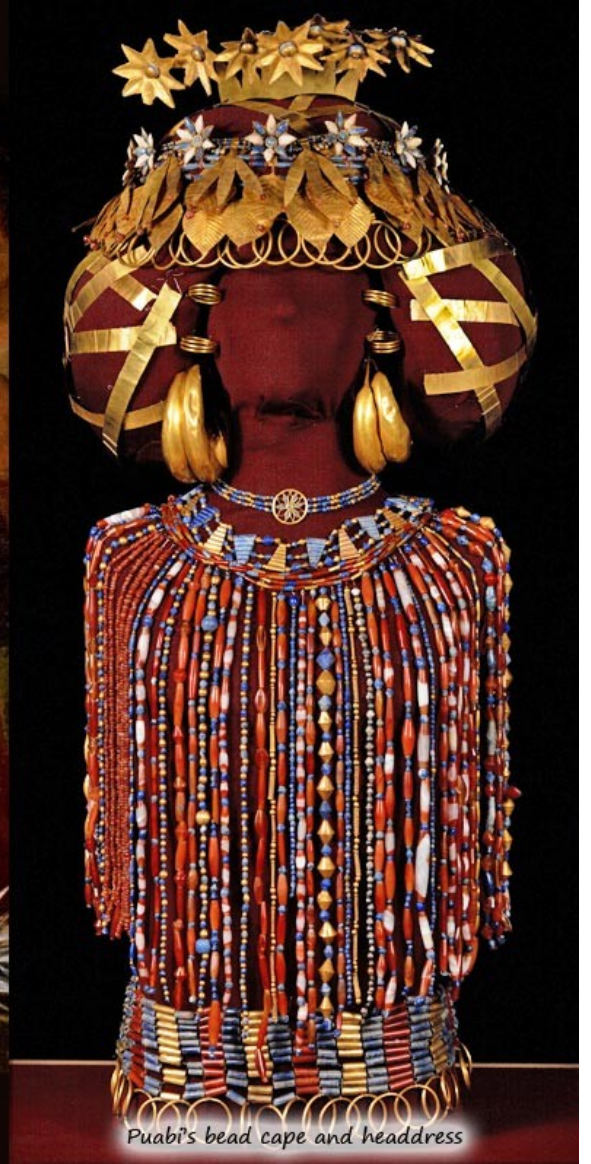




Puabi's headdress on mannequin



attendant's jewelry on mannequin



Puabi's bead cape and headdress



<http://www.youtube.com/watch?gl=CZ&hl=cs&v=7kKeiRdXDfw>

