

Jean-Pierre Digard



Ses principales recherches portent sur **l'ethnologie de l'Iran, notamment de la tribu nomade des Bakhtyâri où il a effectué entre 1965 et 2005 de nombreux séjours prolongés**, et sur l'anthropologie de la domestication animale et des relations hommes-animaux domestiques, cheval, chien et chat plus particulièrement.

His Focus

- As ethnographer his interest was on material culture – technology – and animal husbandry
- He recognized that he was doing “archaeology of the present”
- He focused on Bakhtiari camps and their seasonal and physical structure
- He studied the Babadi, the tribe in the film

The Bakhtiari

- The largest tribe in Iran of which 100-200 thousand migrated
- Seasonal migration from lowland to highland is 300 km
- Travel between Khuzistan and Isfahan
- Have facilities at each place where they stay for long periods
- These facilities are used annually by the same people

Evidence

- One does not find any objects domestic or manufactured on abandoned sites. Why?
- Abandonment is normal and people take their belongings with them
- Their equipment is nearly all made of plant or animal materials
- Even bones are chewed by dogs
- Trampled tent sites and animal pens
- Stone walls

Tent Sites

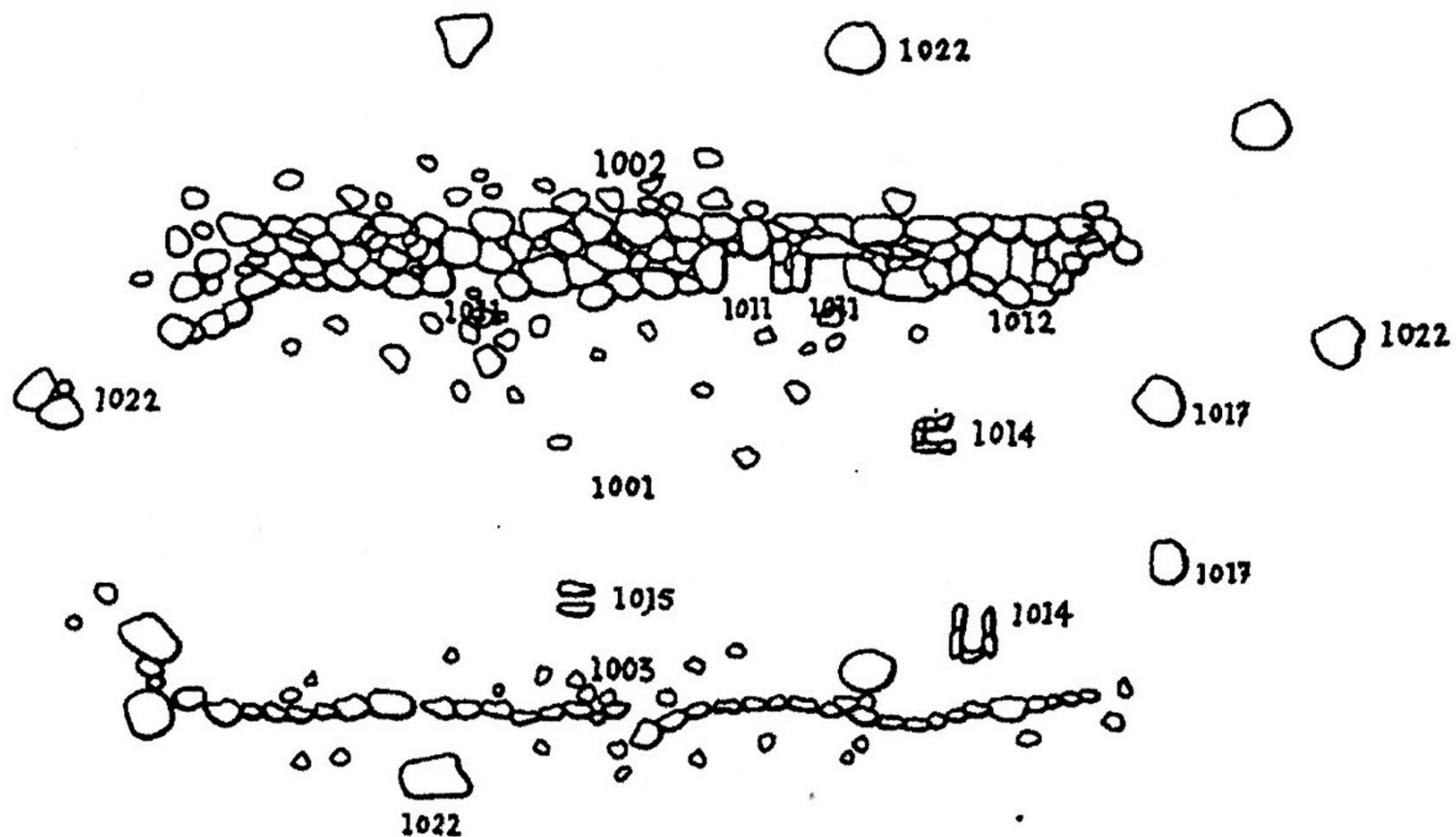
- Generally a terrace about 10m long and 3-4m wide.
- Ground is flattened and packed down
- Row of stones, 60-80 cm, along one side
- Little evidence of fireplaces
- No post holes
- In winter, stone walls enclose tent site

Tent Camps

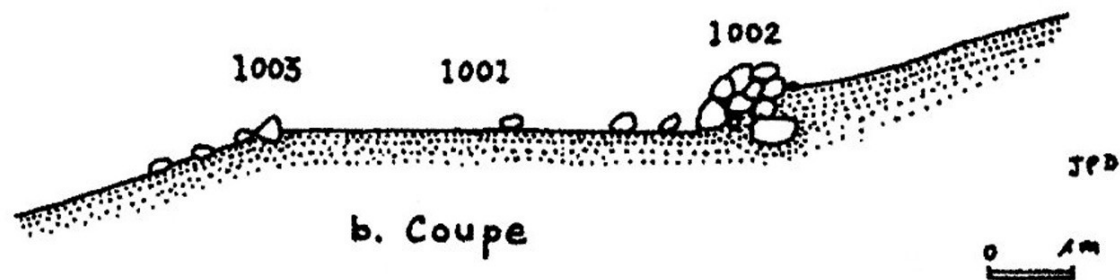
- Camps of variable size, 9-11 tents
- In winter in sheltered spot; in summer on hills
- Tents oriented so can see one another and with view to landscape
- In camp I, a chute to present sheep for milking
- A small corral to hold lambs and kids

Seasonal Facilities

- The camp is the unit of production; the tent is the unit of consumption
- Camp I – Milking chute
- Camp II -a large bin for straw storage
- Camp III – Two straw storage bins, large corral
- Camps II, IV - Pens for young animals and grain are individually owned, but storage bins and corrals are communal

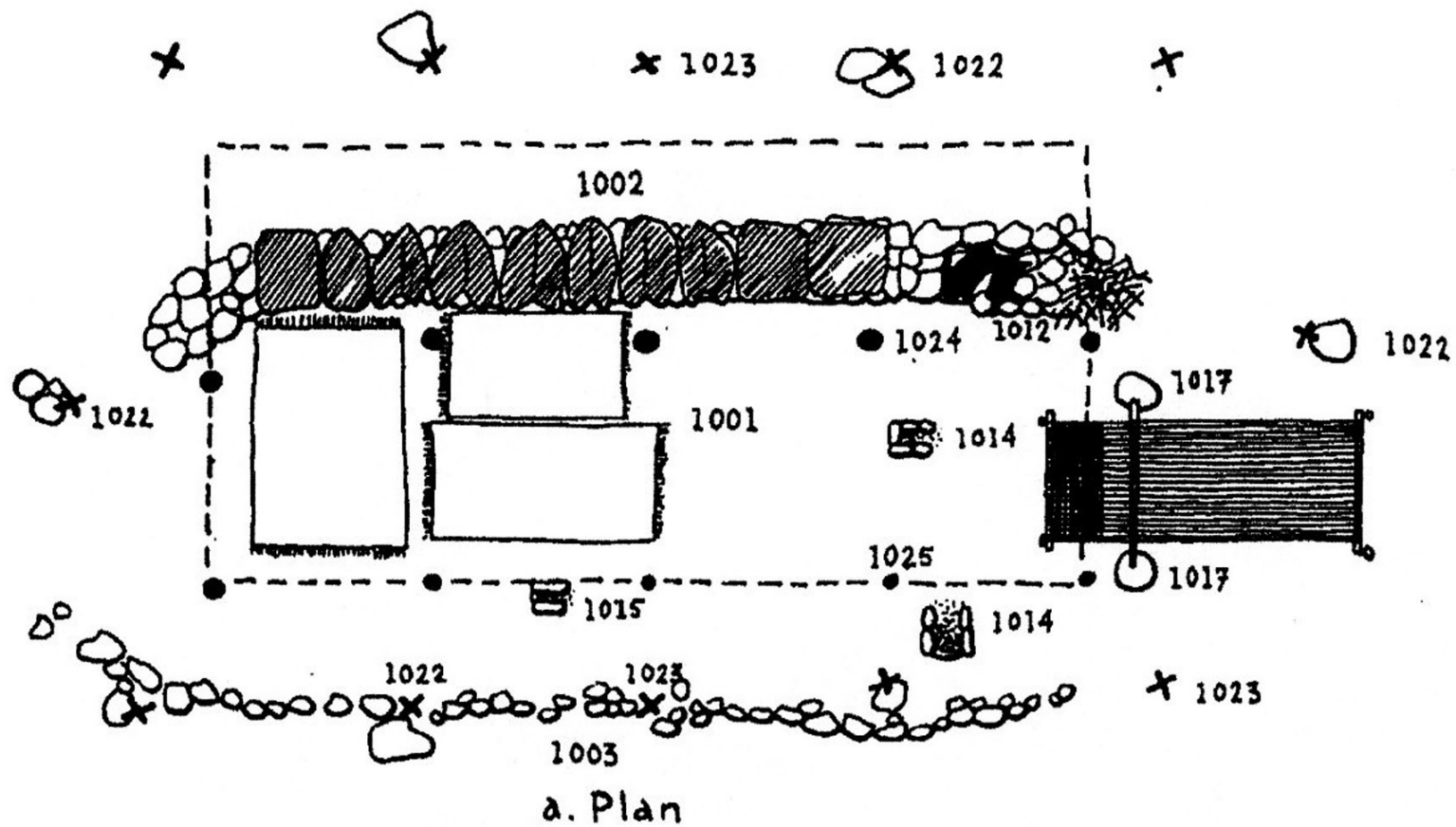


a. Plan

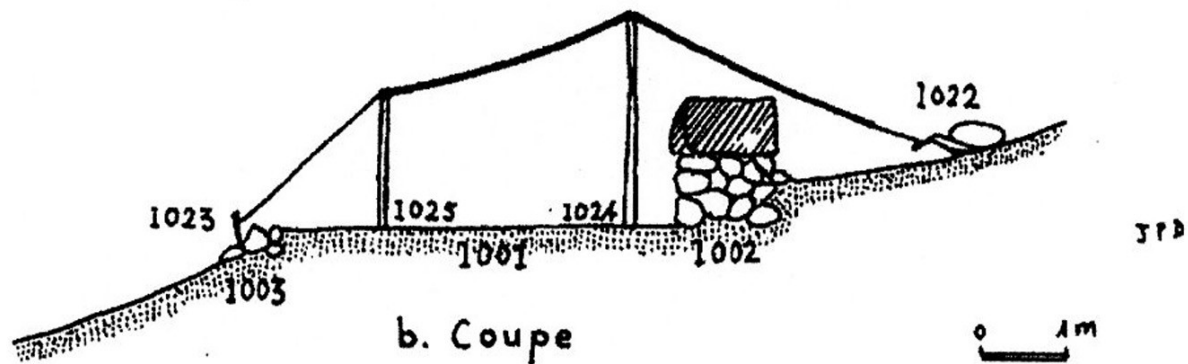


b. Coupe

Figure 6 : EMBLACEMENT DE TENTE INOCCUPÉ (I, 12 bis)



a. Plan



b. Coupe

Figure 7 : EMBLACEMENT DE TENTE OCCUPÉ (I, 12 bis)

Successive Campsites

- He recorded two sites (I and II) in the spring-summer pastures and two (III and IV) in the winter pastures.
- I- mid-May to mid July
- II – mid-July to mid September
- III – beginning of October to end of December
- IV – end of December to end of March

Facilities

- In camp II (fall), harvest; large corrals and mangers for animal, straw storage, threshing floor
- In camp III (Oct-Dec), threshing floors, plant crops, large circular bins for spring harvest
- In camp IV little pens for newborn animals, stone walls around tents

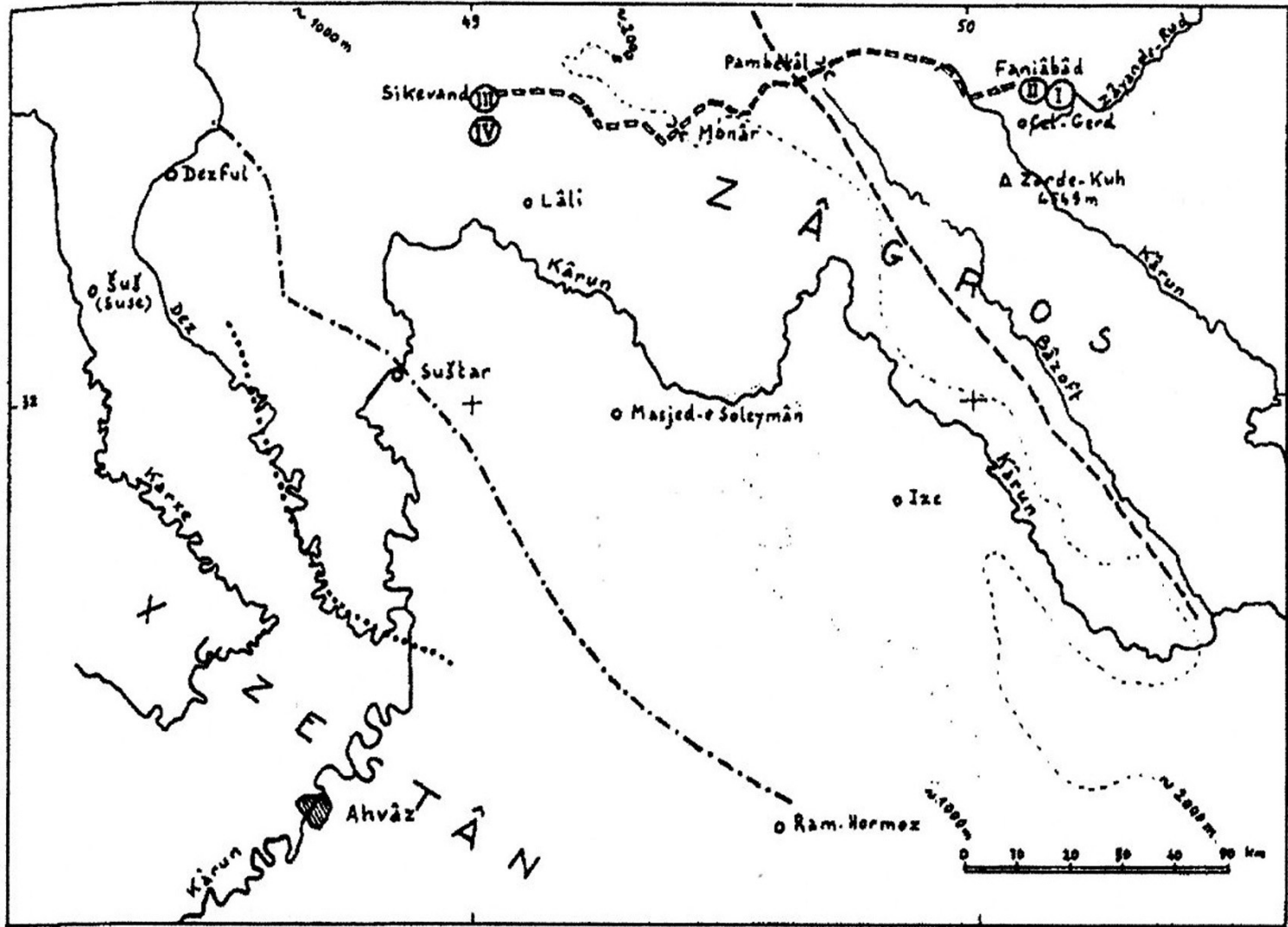


Figure 1: CARTE PARTIELLE DU TERRITOIRE DE LA TRIBU BAKHTYÂRI

Légende

- ① Campement étudié
- Itinéraire de nomadisation
- - - - - Limite occidentale des terres d'estivage
- · - · - · - Limite occidentale des terres d'hivernage (campements)
- · · · · Limite occidentale des terres d'hivernage (troupeaux)

Bakhtiari territory and campsites

Spring-Summer

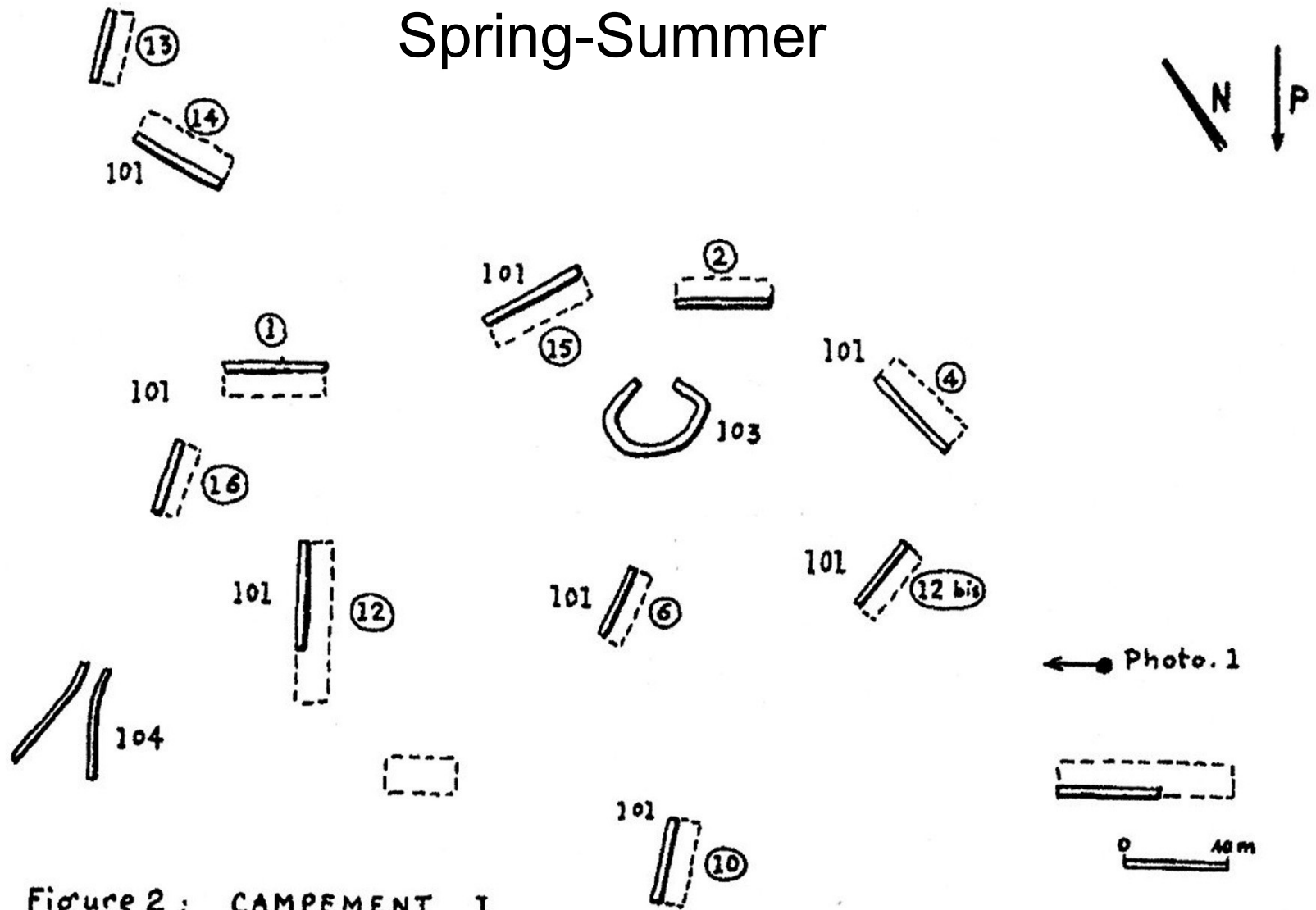


Figure 2 : CAMPEMENT I

④ Numéros d'inventaire des familles et des tentes correspondantes

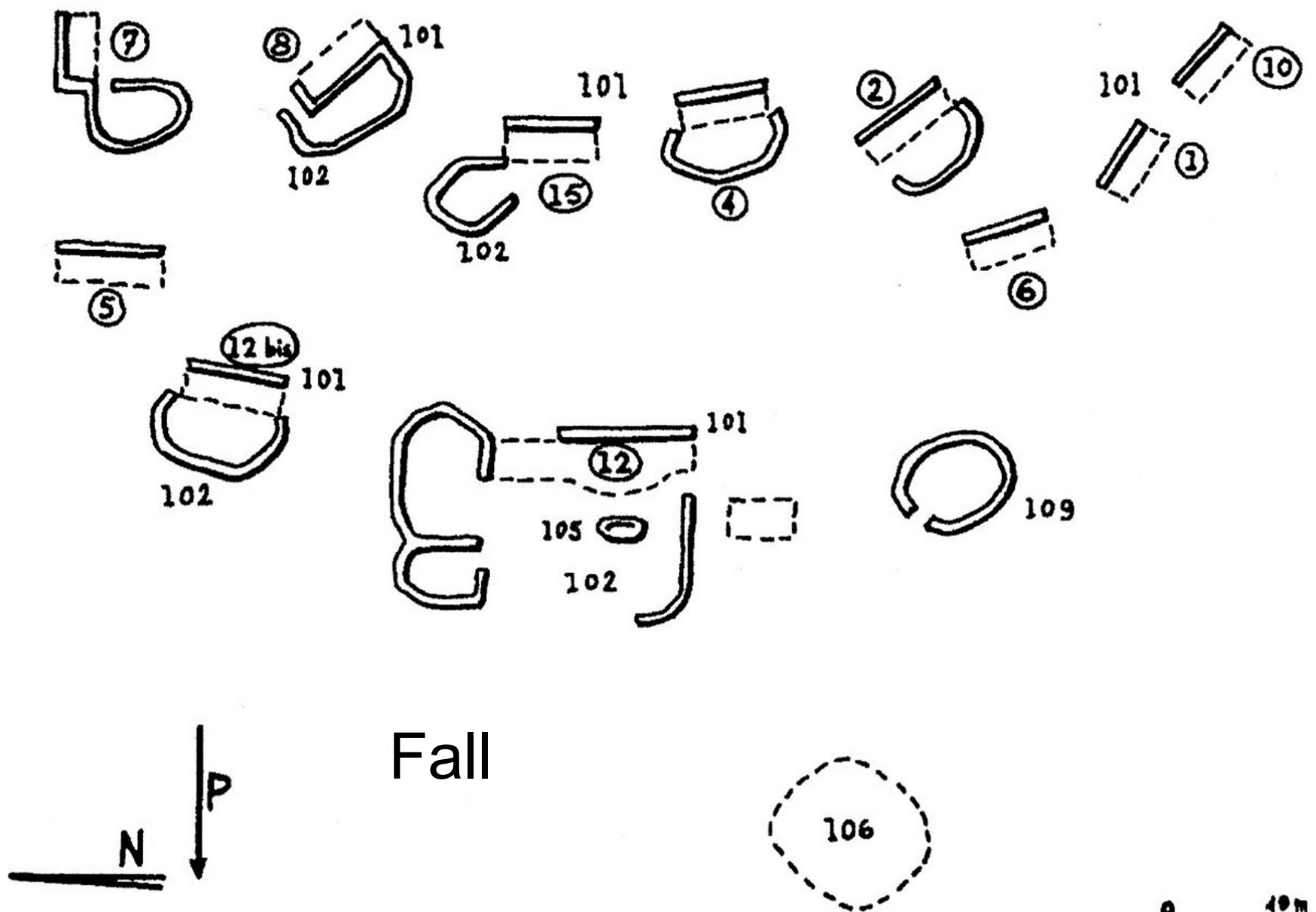
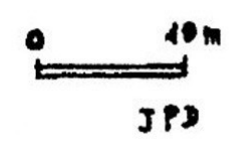


Figure 3: CAMPMENT II



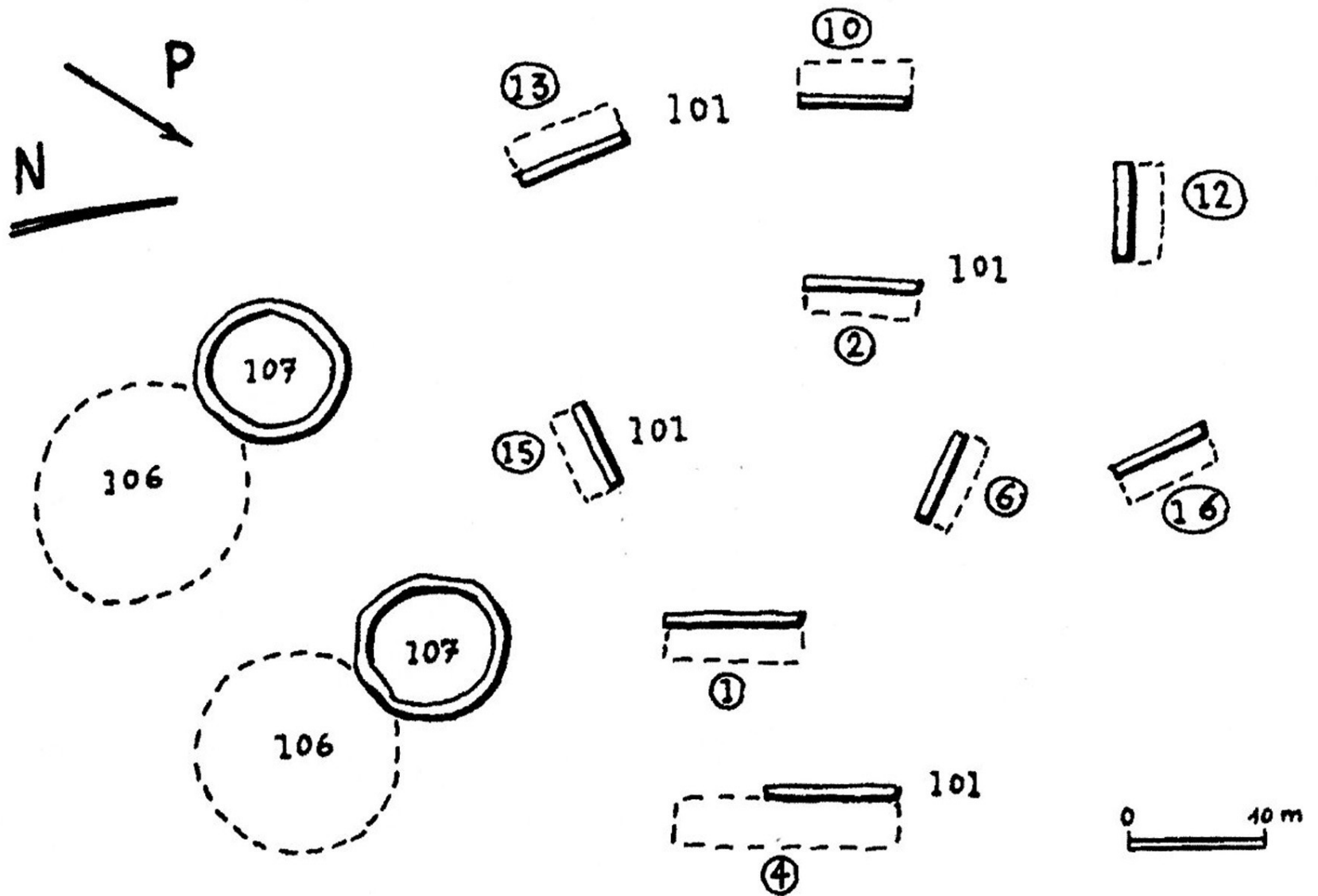


Figure 4: CAMPEMENT III

JPD

October-December

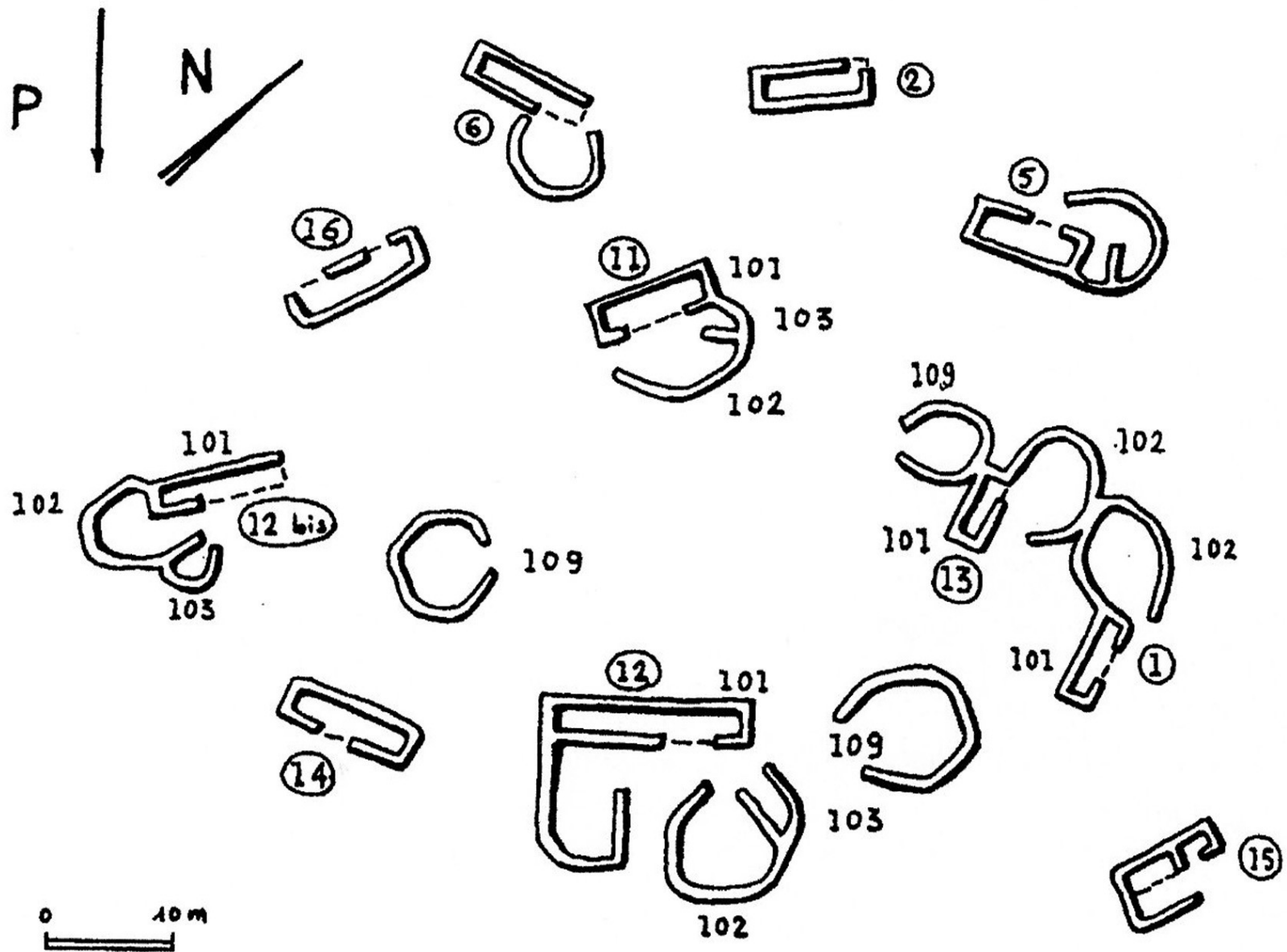


Figure 5: CAMPEMENT IV

Winter