

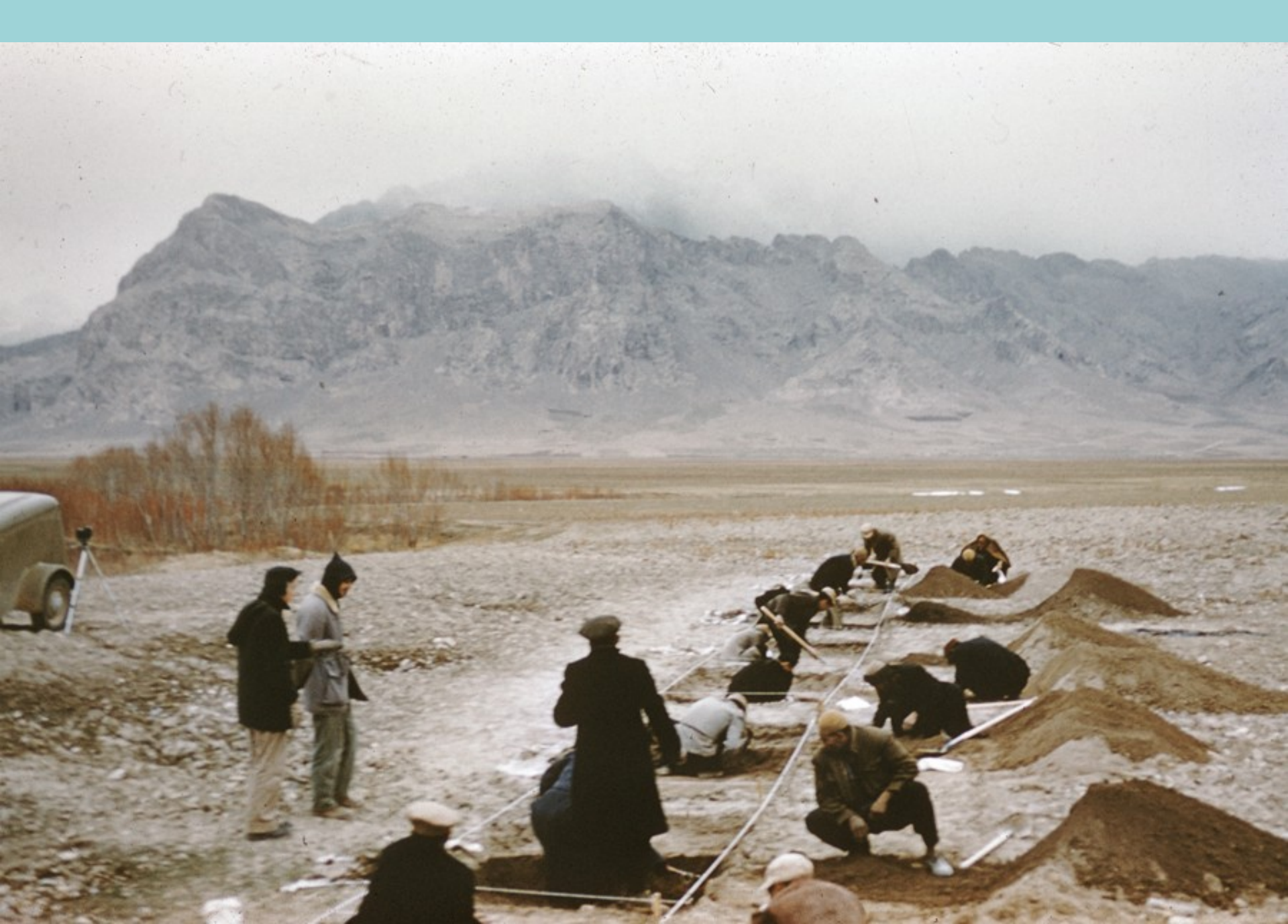
TEPE SARAB – A CAMP OF TRANSHUMANT PASTORALISTS?

Frank Hole
Yale University

Mazaryk University, October 2013

Tepe Sarab

- Discovered in 1959 by Braidwood's Iranian Prehistoric Project
- Excavated in spring 1960
- Excavated part has early ceramic Neolithic, similar to Jarmo
- No structures detected
- Subsequent small excavation by University of Toronto found later ceramic phase and structures
- Site never published

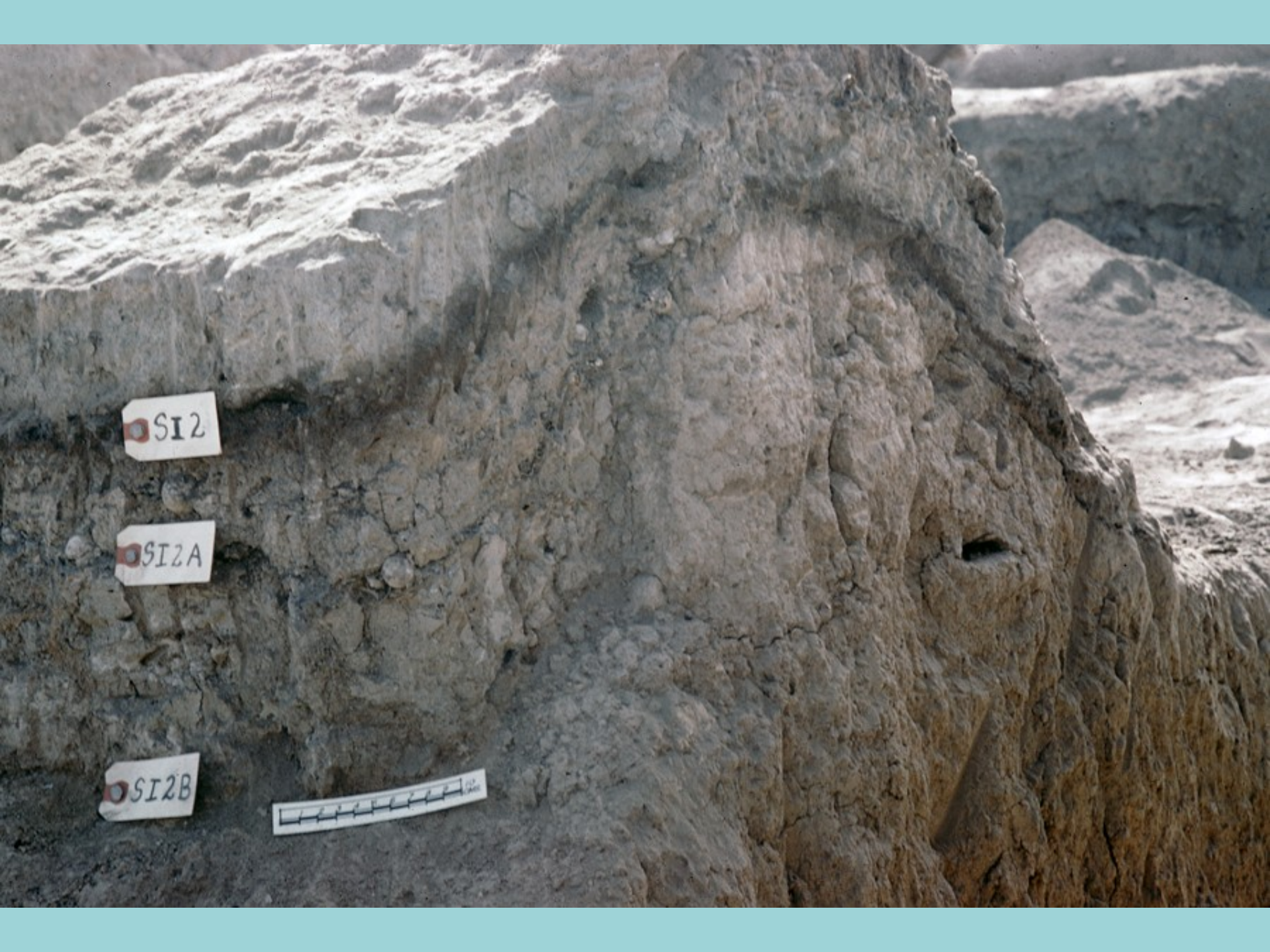












SI2

SI2A

SI2B









Braidwood and Marj Garthwaite

OCTOBER 22, 1930

TEPE SARAB—A NEW SITE FOR THE ORIGINS OF THE WORLD'S FARMERS.



THIS IS THE IRANIAN EQUIVALENT OF IRAQI ADMO. THE TEPE SARAB SITE, LOOKING NORTH. THIS CAN BE CLAIMED AS ONE OF THE EARLIEST PRIMITIVE FARMING LOCATIONS.

"THE VENUS OF TEPE SARAB"; AND ARTIFACTS OF THE "FIRST FARMERS."

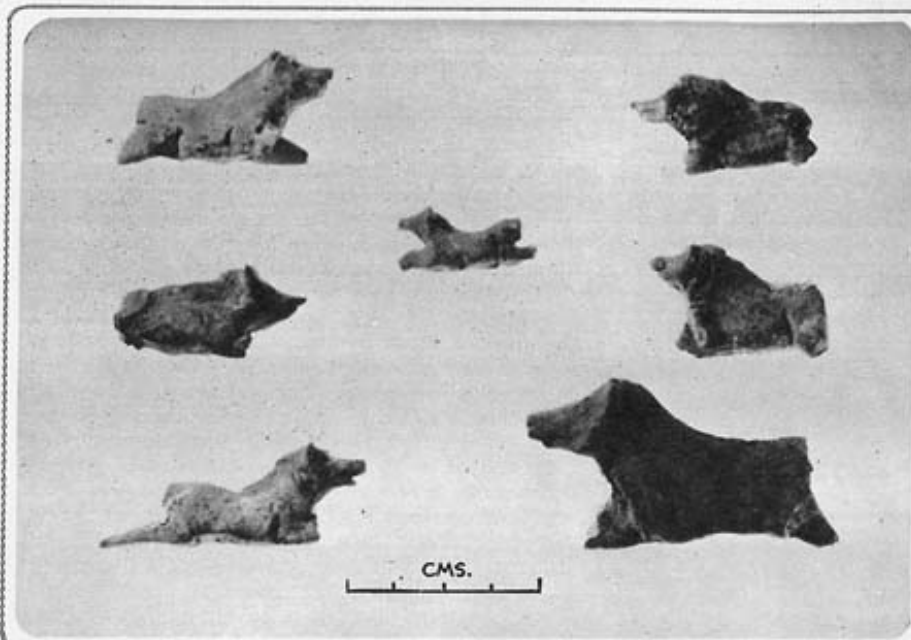


FIG. 5. CLAY FIGURINES OF ANIMALS FROM THE TEPE SARAB SITE (ABOUT 9000 TO 8000 YEARS AGO). THE RELAXED BACKWARD POSE OF THE LEGS OF SOME OF THESE FIGURES IS INTERESTING.

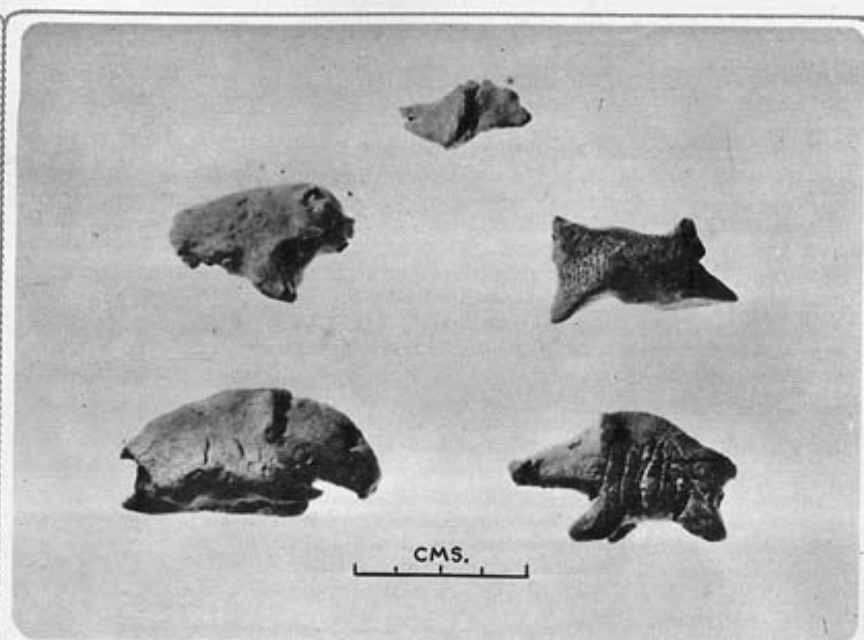


FIG. 6. MORE CLAY FIGURINES FROM TEPE SARAB, OF WHICH THE BOAR (BOTTOM RIGHT) IS OUTSTANDING. THESE FIGURES VIVIDLY RECALL THOSE FOUND AT JARMO, IN IRAQ.

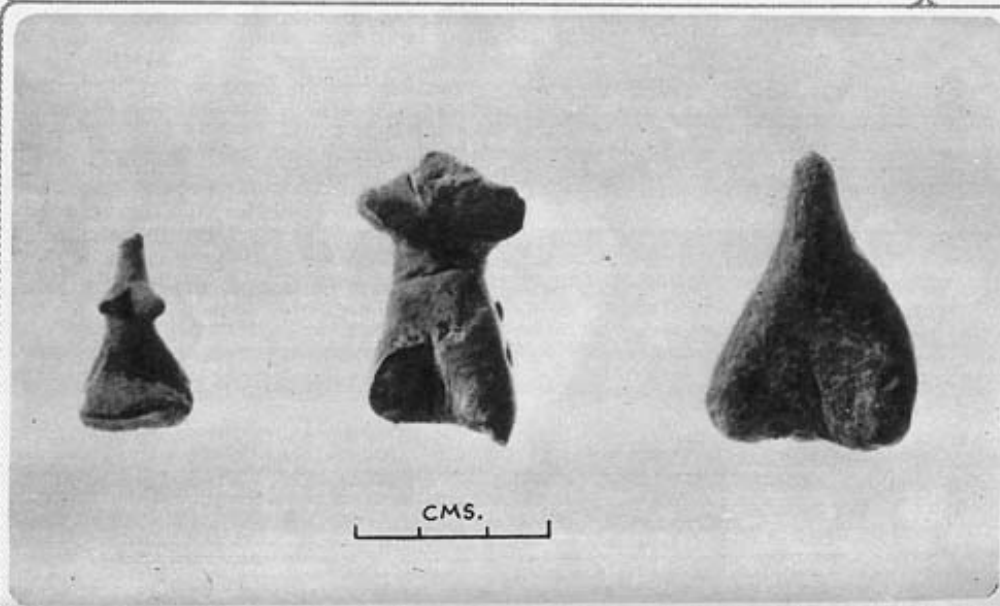


FIG. 7. CLAY FIGURINES OF THE "MOTHER GODDESS" TYPE—FROM TEPE SARAB—MORE OR LESS SCHEMATISED BUT IN ALL CASES MUCH SIMPLER THAN THE ELABORATE AND SEATED SARAB "VENUS" (FIG. 8).

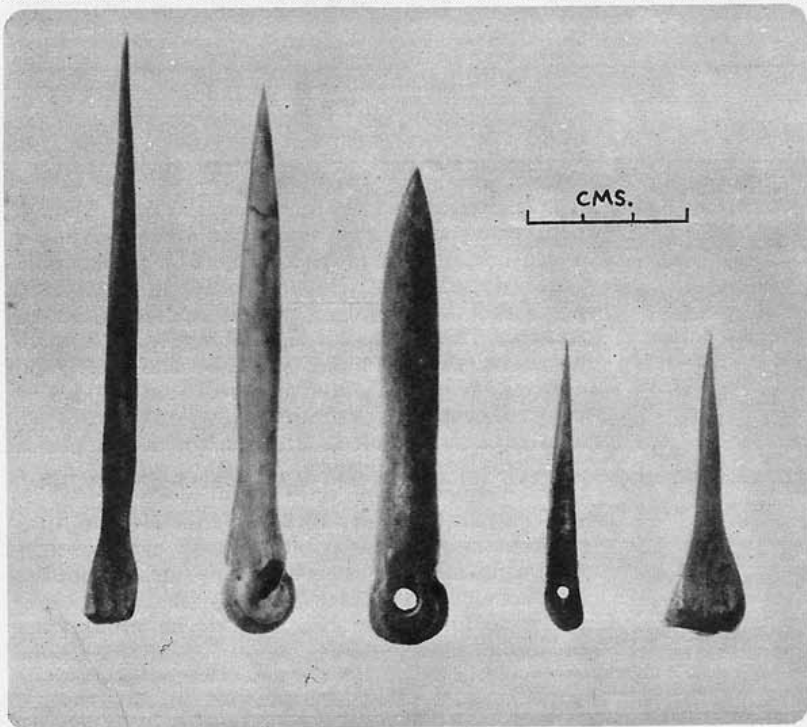


FIG. 9. BONE TOOLS FROM TEPE SARAB: A GROUP OF AWLS AND A NEEDLE. OTHER TOOLS INCLUDED A SMOOTHING TOOL MADE OF ANTLER.

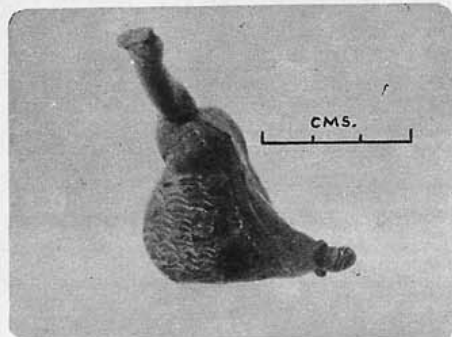
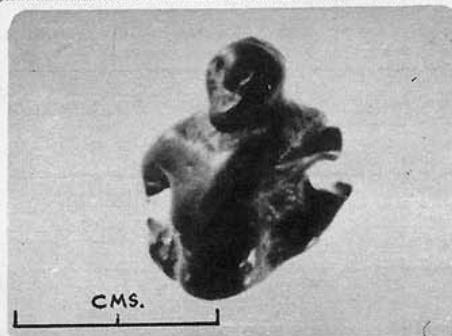


FIG. 10 (Above). A SMALL BLACK PEBBLE WORKED TO REPRESENT AN OBESE, OR PERHAPS PREGNANT, FIGURE. THE ELBOWS ARE NOW BROKEN AWAY. FIG. 11 (Below). A STRANGE SINGLE-LEGGED "MOTHER GODDESS" CLAY FIGURINE. PERHAPS THE FINGER NAIL IMPRESSIONS ARE INTENDED TO INDICATE SOME FORM OF DRESS.

FIG. 8. "THE VENUS OF TEPE SARAB"—AN EXTRA-ORDINARY CLAY "MOTHER GODDESS" FIGURINE, WITH A SEATED HEIGHT OF ABOUT 2½ INS.

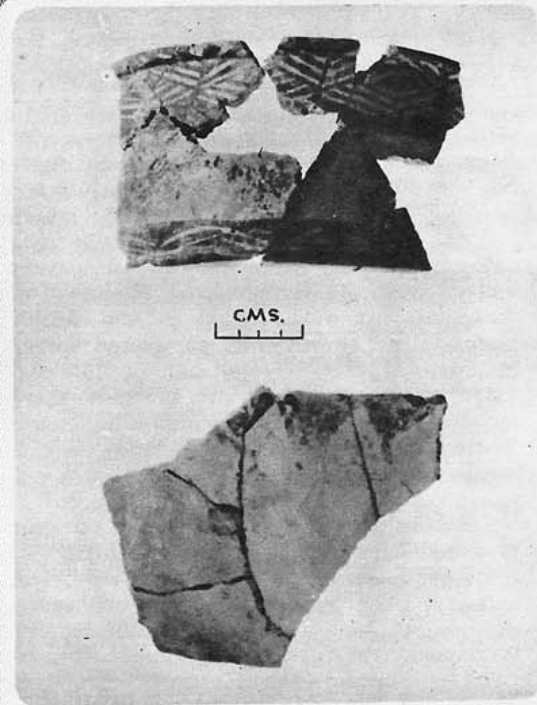


FIG. 12. BUFF POTTERY FROM TEPE SARAB. ABOVE, A STRAIGHT-SIDED SHALLOW BOWL WITH RED-PAINTED DESIGN; BELOW, A FLARED RIM BOWL.































